

This discussion paper is/has been under review for the journal Biogeosciences (BG).
Please refer to the corresponding final paper in BG if available.

The net exchange of methane with high Arctic landscapes during the summer growing season

C. A. Emmerton¹, V. L. St. Louis¹, I. Lehnher², E. R. Humphreys³, E. Rydz¹, and H. R. Kosolofski¹

¹Dept. of Biological Sciences, University of Alberta, Edmonton, Alberta, Canada

²Dept. of Earth and Atmospheric Sciences, University of Waterloo, Waterloo, Ontario, Canada

³Dept. of Geography and Environmental Studies, Carleton University, Ottawa, Ontario, Canada

Received: 24 December 2013 – Accepted: 17 January 2014 – Published: 28 January 2014

Correspondence to: C. A. Emmerton (emmerton@ualberta.ca)

Published by Copernicus Publications on behalf of the European Geosciences Union.

BGD

11, 1673–1706, 2014

Growing season high
Arctic methane
exchange

C. A. Emmerton et al.

Title Page

Abstract

Introduction

Conclusions

References

Tables

Figures

◀

▶

◀

▶

Back

Close

Full Screen / Esc

Printer-friendly Version

Interactive Discussion



Abstract

High Arctic landscapes are essentially vast cold deserts interspersed with streams, ponds and wetlands. These landscapes may be important consumers and sources of the greenhouse gas methane (CH_4), though few measurements exist from this region. To quantify the flux of CH_4 (F_{CH_4}) between the atmosphere and desert and wetland landscapes on northern Ellesmere Island, Canada, we made static chamber measurements at both locations over five growing seasons and eddy covariance (EC) measurements at the wetland in 2012. Chamber measurements revealed that desert soils consumed CH_4 ($-1.37 \pm 0.10 \text{ mg-CH}_4 \text{ m}^{-2} \text{ d}^{-1}$) whereas the wetland emitted CH_4 ($+0.22 \pm 0.19 \text{ mg-CH}_4 \text{ m}^{-2} \text{ d}^{-1}$). Desert CH_4 consumption rates were positively correlated with soil temperature among years, and were similar to temperate locations, likely because of suitable landscape conditions for soil gas diffusion. Wetland F_{CH_4} varied closely with stream discharge entering the wetland and hence extent of soil saturation. Landscape-scale F_{CH_4} measured by EC was $+1.27 \pm 0.18 \text{ mg-CH}_4 \text{ m}^{-2} \text{ d}^{-1}$ and varied with soil temperature and carbon dioxide flux. F_{CH_4} measured using EC was higher than using chambers because EC incorporated a larger, more saturated footprint of the wetland. Using EC F_{CH_4} and quantifying the mass of CH_4 entering and exiting the wetland in stream water, we determined that methanogenesis within wetland soils was the dominant source of F_{CH_4} . Low F_{CH_4} at the wetland was likely due to a shallow organic soil layer, and thus limited carbon resources for methanogens. Considering the prevalence of dry soils in the high Arctic, our results suggest that these landscapes cannot be overlooked as important consumers of atmospheric CH_4 .

1 Introduction

Rapid warming is altering polar regions at unprecedented rates (AMAP, 2012). Recent climate models suggest that Arctic mean annual temperatures will rise $2.5\text{--}7^\circ\text{C}$ by the end of the 21st century (Overland et al., 2011) but up to 9°C in local regions such as the

BGD

11, 1673–1706, 2014

Growing season high Arctic methane exchange

C. A. Emmerton et al.

Title Page

Abstract

Introduction

Conclusions

References

Tables

Figures

◀

▶

◀

▶

Back

Close

Full Screen / Esc

Printer-friendly Version

Interactive Discussion



Canadian Arctic Archipelago (ACIA, 2005). Mean annual precipitation is also projected to increase throughout the Arctic resulting from the capability of a warmer Arctic atmosphere to transport more water from low to high latitudes (Manabe and Stouffer, 1994). Warming and wetting of the Arctic has resulted in several environmental responses including permafrost thaw (Froese et al., 2008), glacial and sea ice melt (Pfeffer et al., 2008), increased surface runoff (Peterson et al., 2002), increased primary productivity and vegetation cover (Walker et al., 2006), and enhanced cycling of greenhouse gases (GHGs), including the powerful GHG methane (CH₄; O'Connor et al., 2010), between the atmosphere and changing landscapes.

Both CH₄ production (methanogenesis) and consumption (CH₄ oxidation, or methanotrophy) occur in Arctic terrestrial, freshwater and marine ecosystems. Methanogenesis is carried out by obligate anaerobic microorganisms (except in ocean surface waters), whereas methanotrophy occurs primarily in oxic environments. In the low and high Arctic (as defined by AMAP, 1998), there are numerous sources of CH₄ to the atmosphere, most of which are predicted to strengthen in a warming and increasingly ice-free environment. These sources include thermokarst lakes, peatlands, lake sediments, thawing permafrost, subglacial environments, CH₄ hydrates in marine sediments and CH₄ production in ocean surface waters (Roulet et al., 1994, O'Connor et al., 2010, Kort et al., 2012, Wadham et al., 2012). For obvious reasons, far more attention has been bestowed on these sources of CH₄ to the atmosphere, with proportionally less attention given to numerous sinks of CH₄ in polar regions. Sinks of CH₄ include the oxic layer above the saturated zone in peatlands where CH₄ is produced, in oxygenated water columns of lakes and oceans, and in dry desert tundra soils that make up a large portion of the high Arctic landscape (Whalen and Reeburgh, 1990). These sinks are equally important to understand and quantify because they can both prevent CH₄ from entering the atmosphere and directly consume atmospheric CH₄.

Currently, the average atmospheric concentration of CH₄ is just over 1800 parts per billion (ppb) in the Northern Hemisphere, compared to a background concentration of ~ 600 ppb for the majority of past 600 000 yr (Kirschke et al., 2013). Although monitor-

BGD

11, 1673–1706, 2014

Growing season high Arctic methane exchange

C. A. Emmerton et al.

Title Page

Abstract

Introduction

Conclusions

References

Tables

Figures

◀

▶

◀

▶

Back

Close

Full Screen / Esc

Printer-friendly Version

Interactive Discussion



ing the rise of atmospheric CH₄ concentrations is extremely important for understanding net emissions of this powerful GHG, it is equally important to quantify how CH₄ is interacting with landscapes to understand processes driving concentration changes. For example, the flux of CH₄ (F_{CH_4}) between landscapes and the atmosphere is the balance between methanogenesis and CH₄ oxidation (consumption). When F_{CH_4} is negative, the system is in a phase of net CH₄ consumption (or methanotrophy), and CH₄ is being removed from the atmosphere. When positive, the system is in a phase of net methanogenesis, and CH₄ is being added to the atmosphere. Thus, as climate changes, the state of F_{CH_4} in any ecosystem can have a positive or negative feedback on the atmospheric pool of CH₄. Currently, there is a glaring paucity of F_{CH_4} measurements in high Arctic ecosystems (Olefeldt et al., 2013) and little is known about how its direction and magnitude will respond as climate and landscapes change in the future.

The goal of this research was to quantify F_{CH_4} for remote high Arctic landscapes where very little is known regarding carbon cycling in general and CH₄ fluxes in particular. Between 2008 and 2012, we measured F_{CH_4} near Lake Hazen in Quttinirpaaq National Park, Ellesmere Island, Canada (81.8° N, 71.4° W). Using static chamber measurements, eddy covariance (EC) measurements and a mass budget analysis, we examined spatial and temporal variations in F_{CH_4} over this high Arctic landscape. We hypothesized that dry unproductive polar desert landscapes would act as a CH₄ sink while wet productive meadow wetlands would be a CH₄ source to the atmosphere. As elsewhere, soil moisture, and air and soil temperature were expected to be important drivers of F_{CH_4} . However the high Arctic land area is substantial and represents the extremes of environmental conditions which are changing rapidly, making it a key ecosystem to examine in the context of global CH₄ cycling. To our knowledge, this study represents one of the longest records of F_{CH_4} in the high Arctic, and the highest northern latitude EC measurements collected to date.

BGD

11, 1673–1706, 2014

Growing season high Arctic methane exchange

C. A. Emmerton et al.

Title Page

Abstract

Introduction

Conclusions

References

Tables

Figures

⏪

⏩

◀

▶

Back

Close

Full Screen / Esc

Printer-friendly Version

Interactive Discussion



2 Materials and methods

2.1 Research site

We conducted our research out of the Lake Hazen base camp in Quttinirpaaq National Park, Canada's most northerly and remote national park, on northern Ellesmere Island, Nunavut (Fig. 1). Fewer than 15 people typically visit the site each year. The lower reach of the lake's watershed is considered a high Arctic thermal oasis (France, 1993) because it is protected from coastal weather by the Grant Land Mountains and the Hazen Plateau adjacent to the lake. Much of the watershed is typical of the high Canadian Arctic, consisting of a dry, mineral soil landscape with intermittent meadow wetlands and ponds where water flows and collects. Following nine months of sub-0 °C temperatures, snowmelt commences in the watershed in early June and vegetation growth proceeds quickly to peak biomass in mid-July before senescence toward freezing conditions in September. Despite continuous daylight during the growing season, diurnal patterns in solar radiation exist.

We focussed our study on two common, contrasting landscape types in the high Arctic: a dry unproductive polar desert (herein "desert") and a moist productive meadow wetland (herein "wetland") (Fig. 1). Ground cover at the desert (~ 188 m.a.m.s.l.) is classified as graminoid, prostrate dwarf-shrub forb tundra (Walker et al., 2005) consisting of cryptogamic crust (56.1%), lichen (11.8%), *D. integrifolia* (4.8%), moss (1.9%), *Carex nardine/Kubresia myosuroides* (1.3%), *Salix archea* (0.6), litter (3.5%) and bare ground (20.5%, Tarnocai et al., 2001). Ground cover at the wetland (~ 231 m.a.m.s.l.; 2.9 ha) is classified as sedge/grass, moss meadow wetland (Walker et al., 2005) consisting of *Carex*, *Eriophorum* and graminoids (Edlund, 1994). The wetland is part of the larger Skeleton Creek meadow wetland complex, consisting of permafrost seeps (PF sites), Skeleton Lake, shallow ponds (e.g., Pond 11) and a creek flowing through a wetland valley (Fig. 1). During a typical growing season, the creek flows into the wetland, saturates soils and exits downstream towards Lake Hazen.

BGD

11, 1673–1706, 2014

Growing season high Arctic methane exchange

C. A. Emmerton et al.

Title Page

Abstract

Introduction

Conclusions

References

Tables

Figures

◀

▶

◀

▶

Back

Close

Full Screen / Esc

Printer-friendly Version

Interactive Discussion



2.2 Quantifying F_{CH_4}

2.2.1 Measurement overview

F_{CH_4} has overwhelmingly been measured throughout the Arctic using static chambers because of their simplicity and convenience (Parmentier et al., 2011). The eddy covariance (EC) technique (Baldocchi, 2003) for measuring F_{CH_4} has only been used sporadically in the high Arctic (e.g., Friberg et al., 2000) because tunable diode laser detectors or closed path detectors require large quantities of power not readily available in remote high Arctic locations. Recently, a low power consuming open path CH_4 analyser (LI-7700; LI-COR, Lincoln, NE) has appeared on the market (McDermitt et al., 2011). EC provides F_{CH_4} near continuously over short temporal scales (30 min) and large spatial scales (hectares) providing great potential to focus on ecosystem-scale exchanges with the atmosphere and the biotic and abiotic factors driving temporal variations across northern ecosystems. This study was part of a larger one in which we are quantifying the flux of the GHG carbon dioxide (F_{CO_2} ; the balance between CO_2 uptake via photosynthesis and the release of CO_2 via ecosystem respiration) between the atmosphere and desert (2008–2012) and wetland (2010–2012) landscapes using EC flux towers. Towers were equipped with Campbell Scientific Inc. (CSI; Logan, UT) CSAT3 sonic anemometers and LI-COR LI-7500 (open-path) and LI-7200 (enclosed-path) CO_2 water vapour (H_2O) infrared gas analyzers (Fig. S1). In addition to F_{CH_4} and F_{CO_2} , these tower-based EC systems quantified H_2O and energy fluxes and were equipped with sensors to measure soil temperature and moisture at 5 cm depth (CS107B, CS616, CSI; 30 min. mean each tower, each growing season), and other meteorological parameters (Table S1). Signals from all sensors were recorded as half-hour means on CSI CR3000-XT dataloggers. Thaw depth was monitored weekly at ten points along a transect at each site using a steel probe.

BGD

11, 1673–1706, 2014

Growing season high Arctic methane exchange

C. A. Emmerton et al.

Title Page

Abstract

Introduction

Conclusions

References

Tables

Figures

◀

▶

◀

▶

Back

Close

Full Screen / Esc

Printer-friendly Version

Interactive Discussion



2.2.2 Chamber measurements

Static, non-steady state chambers were used to quantify F_{CH_4} at the desert and wetland sites (Fig. 1). At the start of each season, we set four 25 cm diameter white PVC collars 10–15 cm into the soil within 20 m of each tower (the same locations each year), where they remained for the rest of the field season. Two desert collars enclosed bare soil and two other collars enclosed > 50 % vegetation cover consisting mostly of *Dryas* (Figs. 1 and S1). At the wetland, four collars were placed along its margin because a boardwalk was not permitted in the National Park to access the centre of the wetland (Figs. 1 and S1). Each collar enclosed vegetation of similar type and cover as the rest of the wetland. Chambers were deployed at each site every five to seven days between June and August. On sampling days, between 10:00–16:00 LT, foil-covered 18 L plastic chambers with sampling lines were placed into a water-filled groove on the collars. At 0, 20, 40 and 60 min after deployment, air inside each chamber was mixed by syringe before chamber air was collected into an evacuated 35 mL Wheaton glass bottle. Ambient air pressure and temperature were recorded. All samples were stored in the dark at 4 °C until analyses at the University of Alberta. We used a Varian 3800 gas chromatograph (GC) with a flame-ionizing detector to measure the CH_4 concentration (in parts-per-million; ppm) of each gas sample from each chamber. Three standard-grade gases (0, 1, 54 ppm- CH_4) were used to calibrate the GC, and all samples were analysed in duplicate. We then used the CH_4 concentration, the ideal gas law, chamber metrics, ambient pressure and temperature, and the gas constant to quantify the mass of CH_4 enclosed by each chamber at each sampling time. Linear regressions were used to fit relationships between sample times and total masses of CH_4 for each chamber. The coefficients of determination were typically strong for both desert and wetland measurements ($r^2 = 0.9 \pm 0.2$). The slope of the regression line determined F_{CH_4} ($\text{mg CH}_4 \text{ m}^{-2} \text{ hr}^{-1}$) for each chamber. Fluxes from the four chambers were averaged to determine site daily means ($\text{mg CH}_4 \text{ m}^{-2} \text{ d}^{-1}$) with the assumption that there would be little diurnal variation in F_{CH_4} (see Results section).

BGD

11, 1673–1706, 2014

Growing season high Arctic methane exchange

C. A. Emmerton et al.

Title Page

Abstract

Introduction

Conclusions

References

Tables

Figures

◀

▶

◀

▶

Back

Close

Full Screen / Esc

Printer-friendly Version

Interactive Discussion



2.2.3 Eddy covariance measurements

As described above, although EC technology is not new, only recently has a low-power, robust CH₄ analyzer become available. We had the opportunity during the 2012 growing season to deploy an LI-7700 open-path CH₄ gas analyzer on one of our two EC towers. Because we could not obtain chamber measurements in the centre of the wetland, we deployed the LI-7700 on the wetland EC tower to attain more representative CH₄ fluxes from that ecosystem than provided by the chambers on the wetland's periphery. The LI-7700 was laterally positioned 25 cm from the sonic anemometer and 1.9 m above the vegetation canopy height. Measurements of CH₄ molar density, wind velocity in three coordinates, sonic temperature, ambient pressure, and CO₂ and H₂O mixing ratios (LI-7200) were collected at 10 Hz and logged on a LI-COR LI-7550 interface unit.

We used EddyPro (LI-COR, v. 4.1) to calculate CH₄, CO₂ and H₂O fluxes and to QA/QC data and remove outliers. Gas fluxes were calculated at half-hour intervals using a block averaging approach. To correct for anemometer tilt, a double rotation was performed to force mean vertical and lateral wind components to zero. F_{CH_4} data were de-spiked and corrected for time lag between the anemometer and the gas analyzer measurements using a covariance maximization approach. Because the LI-7700 is an open-path analyzer, density fluctuations were corrected for using the Webb et al. (1980) approach. We used spectral corrections to adjust for flux loss at high and low frequencies (after Ibrom et al., 2007) and to correct for the spectroscopic effects of H₂O (LI-COR, 2011). We removed half-hour fluxes when EC sensors malfunctioned, returned poor diagnostic values (e.g., during rare rain events), when wind did not pass over the wetland, and when the friction velocity fell below 0.1 m s⁻¹, similar to other studies (Wille et al., 2008). We also applied turbulence tests after Mauder and Foken (2006) to remove the poorest-quality fluxes (level 2) when they did occur. Half-hour fluxes that were beyond ±3 SD of the growing season mean were also removed. These corrections resulted in removal of 43.8% of total collected flux data. Measurement gaps occurred

BGD

11, 1673–1706, 2014

Growing season high Arctic methane exchange

C. A. Emmerton et al.

Title Page

Abstract

Introduction

Conclusions

References

Tables

Figures

◀

▶

◀

▶

Back

Close

Full Screen / Esc

Printer-friendly Version

Interactive Discussion



between 22 June and 1 July and between 31 July and 1 August when solar charging could not match power requirements. For both chamber and EC F_{CH_4} measurements, positive values represented CH_4 emission to the atmosphere, whereas negative values represented CH_4 consumption in soils.

2.3 Wetland aquatic chemistry

We determined if there were significant dissolved CH_4 inputs by Skeleton Creek into the wetland so we could discuss the potential for methanogenesis within the wetland soils. These measurements, in combination with EC flux tower measurements, would also allow us to construct a general CH_4 mass budget for the wetland. We collected surface water upstream and downstream of the wetland every two to five days during the 2011 and 2012 growing seasons (Fig. 1). We measured the partial pressure of dissolved CH_4 by collecting surface water at each site into evacuated 160 mL Wheaton glass serum bottles with butyl rubber stoppers (after Kling et al., 1991). Each bottle contained 8.9 g of potassium chloride preservative, and 10 mL of ultra high-purity N_2 headspace. Samples were analysed on the same GC used to analyze the chamber samples, but using 0, 50, 350, and 900 ppm CH_4 standard gases. All samples were placed in a wrist-action shaker for 20 min to equilibrate headspace gas with the sample. 500 μL of headspace gas was extracted from each sample for analyses using a gas-tight syringe. Duplicate analyses were performed on all samples. We used the headspace CH_4 gas concentrations from each sample, ambient and laboratory temperature and pressure, and Henry's Law to determine the dissolved CH_4 concentration in the collected water sample. Water was also collected at each site for analyses of general water chemistry parameters including concentrations of particulate and dissolved nutrients, ions, chlorophyll-*a* and dissolved organic carbon. All samples were initially processed and preserved on-site in the Lake Hazen/Quttinirpaaq Polar Laboratory and subsequently analysed using standard methods at the University of Alberta's Biological Analytical Services Laboratory. In-situ measurements including pH, dissolved oxygen, water temperature, oxidation-reduction potential and specific conductivity were also

BGD

11, 1673–1706, 2014

Growing season high Arctic methane exchange

C. A. Emmerton et al.

Title Page

Abstract

Introduction

Conclusions

References

Tables

Figures

◀

▶

◀

▶

Back

Close

Full Screen / Esc

Printer-friendly Version

Interactive Discussion



taken at each site at time of sampling using a YSI 556 MPS multi probe system. Water flow at each site was measured every two to three days using a Pygmy current meter. At each site, we chose a channelized section of stream and measured the water velocity at half-depth across 5 cm segments of stream. We then took the product of stream cross sectional area and mean velocity in each segment and summed all segments to quantify total stream flow.

3 Results

3.1 Chamber measurements

Over several growing seasons, soils at the desert site consumed atmospheric CH_4 at a mean rate ($\pm 1\text{SE}$) of $1.37 \pm 0.10 \text{ mg CH}_4 \text{ m}^{-2} \text{ d}^{-1}$ ($n = 27$), whereas the wetland site emitted $0.22 \pm 0.19 \text{ mg CH}_4 \text{ m}^{-2} \text{ d}^{-1}$ ($n = 18$) to the atmosphere (Fig. 2). Desert soils consistently consumed atmospheric CH_4 throughout the growing season, whereas wetland soils typically consumed atmospheric CH_4 during the first two weeks of July ($0.40 \pm 0.12 \text{ mg CH}_4 \text{ m}^{-2} \text{ d}^{-1}$) before transitioning to a source of CH_4 to the atmosphere ($0.72 \pm 0.22 \text{ mg CH}_4 \text{ m}^{-2} \text{ d}^{-1}$) (Fig. 3). These differences in F_{CH_4} between the desert and wetland were related to the large differences in soil moisture and soil temperature (Fig. 2). Daily mean soil moisture at 5 cm depth of the desert soils was consistently near $15.1 \pm 1.0\%$ v/v during the measurement period, except during short rain events. Wetland soil moisture at the same depth was significantly higher ($75.2 \pm 3.2\%$; two-sample t test, $t(43) = 20.9$, $p < 0.001$) than at the desert. Because the wetland was bowl-shaped, snow melt and creek water saturated the centre of the wetland first before wetting the margins where the chamber collars were located. In 2012, the wetland gradually dried after snowmelt because creek flow ceased due to low water levels in ponds upstream. Once ponds returned to maximum storage, creek flow resumed on 16 July 2012 and eventually re-saturated the wetland margin soils to levels similar to other years. Near-surface soils at the desert site were warmer

Title Page

Abstract

Introduction

Conclusions

References

Tables

Figures

⏪

⏩

◀

▶

Back

Close

Full Screen / Esc

Printer-friendly Version

Interactive Discussion



through the growing season as described by the significant differences in 5 cm depth soil temperature ($14.4 \pm 0.5^\circ\text{C}$ -desert vs. $10.4 \pm 0.5^\circ\text{C}$ -wetland; $t(43) = 5.5$, $p < 0.001$), soil heat flux at 5 cm depth ($52.3 \pm 4.2 \text{ W m}^{-2}$ -desert vs. $15.8 \pm 1.5 \text{ W m}^{-2}$ -wetland; $t(42) = 7.0$, $p < 0.001$) and thaw depths ($0.88 \pm 0.03 \text{ m}$ -desert vs. $0.29 \pm 0.01 \text{ m}$ -wetland; $t(39) = 18.2$, $p < 0.001$; Fig. 2).

Between 2008 and 2012 at the desert site, mean growing season F_{CH_4} ranged between -0.91 and $-1.78 \text{ mg CH}_4 \text{ m}^{-2} \text{ d}^{-1}$ (Table 1, Fig. 3). CH_4 consumption rates were positively correlated with soil temperatures between years ($r^2 = 0.99$; multiple correlation) but not influenced by changes in soil moisture ($r^2 = 0.03$). Consumption rates of CH_4 were not significantly different in chambers with or without vegetation (paired t test; $t(26) = 0.2$, $p = 0.83$). Associations between within-season F_{CH_4} and environmental factors were generally weak ($-0.28 < \rho < 0.07$; Spearman Rank Correlation; Table S2-A.). From 2010 to 2012 at the wetland site, mean growing season F_{CH_4} ranged between -0.05 and $+0.43 \text{ mg CH}_4 \text{ m}^{-2} \text{ d}^{-1}$ (Table 1, Fig. 3). With only 3 yr of data, trends between mean growing season F_{CH_4} at the wetland site and explanatory variables were not meaningful. However, we do note that years with fairer weather (air pressure $r^2 = 0.95$) and warmer conditions (thaw depth $r^2 = 0.81$; soil heat flux at 5 cm depth $r^2 = 0.67$) seemed to be associated with greatest emissions at the wetland. Within-season wetland F_{CH_4} was positively correlated with mean daily stream flow in Skeleton Creek ($\rho = 0.72$; Table S2-B.).

3.2 Eddy covariance measurements

F_{CH_4} , measured using the EC flux tower in 2012, was between -0.84 and $+2.73 \text{ mg CH}_4 \text{ m}^{-2} \text{ d}^{-1}$ with a mean daily F_{CH_4} ($\pm 1\text{SE}$) of $1.27 \pm 0.18 \text{ mg CH}_4 \text{ m}^{-2} \text{ d}^{-1}$ at the wetland (Fig. 4a) with no discernible diurnal patterns (Fig. S2). On days when net CH_4 consumption occurred, mean F_{CH_4} was $-0.33 \pm 0.07 \text{ mg CH}_4 \text{ m}^{-2} \text{ d}^{-1}$ ($n = 9$) compared to $+1.76 \pm 0.14 \text{ mg CH}_4 \text{ m}^{-2} \text{ d}^{-1}$ ($n = 29$) when net CH_4 emission was occurring. Net uptake of CH_4 quickly changed to net emission just after wetland soils rapidly thawed.

Growing season high Arctic methane exchange

C. A. Emmerton et al.

Title Page

Abstract

Introduction

Conclusions

References

Tables

Figures

◀

▶

◀

▶

Back

Close

Full Screen / Esc

Printer-friendly Version

Interactive Discussion



Growing season high Arctic methane exchange

C. A. Emmerton et al.

Title Page

Abstract

Introduction

Conclusions

References

Tables

Figures

◀

▶

◀

▶

Back

Close

Full Screen / Esc

Printer-friendly Version

Interactive Discussion



Soil temperature warmed from freezing conditions (-1.3°C) to above 7°C during the first seven days of measurements (Fig. 4b). During that time, frozen moisture within soils and in snow covering the wetland, thawed and saturated the wetland landscape (Fig. 4c). The increase in evaporative fluxes preceded the saturation of the 5 cm depth of the wetland margin while F_{CO_2} remained positive (net CO_2 emission) for another week after this initial thaw period (Fig. 4d). CH_4 emissions peaked during the first 2 weeks of July, similar to when net CO_2 uptake peaked. We did not observe significant changes in whole-wetland CH_4 emission rates when Skeleton Creek flow resumed during the third week of July and soil moisture in the wetland margin returned to values similar to the post-thaw period (Fig. 4a and c). In contrast, F_{CH_4} measured by static chambers increased through the summer with peak CH_4 emissions at the end of the season when Skeleton Creek flow was greatest. However, chamber-based F_{CH_4} on the wetland margin was always lower than the fluxes measured by the EC technique including a period in early July where average F_{CH_4} indicated net CH_4 uptake (Fig. 4a).

Seasonal variations in F_{CH_4} correlated with F_{CO_2} ($\rho = -0.71$) and soil temperature (T_{SOIL} ; $\rho = 0.65$) (Table S3). These associations were used to develop the following parabolic model:

$$F_{\text{CH}_4} = 23.4 + -0.5 \cdot F_{\text{CO}_2} + -5.4 \cdot T_{\text{SOIL}} + -0.1 \cdot F_{\text{CO}_2}^2 + 0.3 \cdot T_{\text{SOIL}}^2 \quad (1)$$

The proportion of variation in daily F_{CH_4} described by the model was 67% (Fig. 5; Table S4). The model did not improve when a soil moisture term was included. Using Eq. (1) and F_{CO_2} and T_{SOIL} data from previous years, F_{CH_4} was predicted to have been much greater in 2010 and 2011 than in 2012 (Fig. 5). Chamber data also showed higher F_{CH_4} in 2011 compared to 2012 (Table 1), however too few chamber measurements were taken in 2010 to confidently evaluate its difference from other years.

3.3 Wetland aquatic chemistry

Flow-weighted mean dissolved CH_4 concentrations ($\pm 1\text{wSD}$) in Skeleton Creek water (Table 2) decreased from $0.029 \pm 0.018 \mu\text{molL}^{-1}$ upstream of the wetland to

Growing season high Arctic methane exchange

C. A. Emmerton et al.

Title Page

Abstract

Introduction

Conclusions

References

Tables

Figures

◀

▶

◀

▶

Back

Close

Full Screen / Esc

Printer-friendly Version

Interactive Discussion



0.002 ± 0.002 μmol L⁻¹ downstream of the wetland between 28 June and 02 August in 2011, a decrease of 94 %. In 2012 between 03 July and 05 August, dissolved CH₄ concentrations decreased 70 % through the wetland from 0.005 ± 0.004 μmol L⁻¹ to 0.01 ± 0.005 μmol L⁻¹, though concentrations were low. Ammonium concentrations increased downstream each year while nitrate concentrations decreased or were below the analytical detection limit. Concentrations of dissolved organic nitrogen and carbon, and particulate matter were higher in the wetland outflow than inflow (Table 2).

If we assume no net storage of CH₄ in the wetland over a growing season when stream flow was occurring (~ late June to early August), we can calculate the net production of CH₄ (production-oxidation losses) in wetland soils using the following equation:

$$\Sigma(I_{\text{CH}_4} + NP_{\text{CH}_4})_{\text{daily}} = \Sigma(F_{\text{CH}_4} + O_{\text{CH}_4})_{\text{daily}} \quad (2)$$

where I_{CH_4} and O_{CH_4} are the daily masses of dissolved CH₄ entering and exiting the wetland, NP_{CH_4} is the daily net production of CH₄ in soils scaled to 2.9 ha of the wetland, and F_{CH_4} is the daily flux of CH₄ from the wetland surface (2.9 ha) as measured by the EC tower. I_{CH_4} and O_{CH_4} were calculated using:

$$I_{\text{CH}_4} \text{ or } O_{\text{CH}_4}(\text{g}) = (([\text{CH}_{4\text{t}1}] + [\text{CH}_{4\text{t}2}])/2) \cdot V \quad (3)$$

where $[\text{CH}_{4\text{t}1}]$ and $[\text{CH}_{4\text{t}2}]$ were mean concentrations of dissolved CH₄ at two consecutive sampling times and V was the total volume of water that flowed through each station between those times. Solving for NP_{CH_4} in Eq. (2), we found that the net production of CH₄ in wetland soils was over twice as much in 2011 (4 612 g CH₄; 4.4 mg CH₄ m⁻² d⁻¹) compared to 2012 (2 002 g CH₄; 2.0 mg CH₄ m⁻² d⁻¹; Table 3). During 2011, soils were warmer and wetter with stronger F_{CO_2} compared to 2012 (Table 1). We also found that even if dissolved CH₄ in Skeleton Creek was entirely evaded to the atmosphere in the wetland (i.e., not oxidized within soils), it was still a very small component (< 1 %) of F_{CH_4} compared to net production in soils (Table 3).

where desiccation restricted microbial activity. This conclusion was further supported by the chamber results where F_{CH_4} was similar in chambers with and without vascular vegetation suggesting that the moister vegetated soils were still within a moisture range that sustained methanotrophs without restricting gas transport. These results also suggested that there was no enhancement of methanogen activity in association with vegetation cover.

The significant CH_4 consumption rates at the desert through the measurement period in each year (Fig. 3) were also a function of relatively warm soil temperatures (Table 1) since methanotrophy is a microbial metabolic process. Despite the high latitude of our site, near surface soils were warm with little variation through the measurement period (Fig. S3). This region experiences low cloud cover relative to much of the high Arctic (Thompson, 1994) resulting in high daily isolation (Fig. 4). The deep, narrow valley structure of the watershed also retains heat more efficiently than other Arctic locales (Thompson, 1994).

4.2 Factors driving CH_4 emission from meadow wetland soils

F_{CH_4} measured in our wetland margin chambers (-0.12 to $+0.43 \text{ mg CH}_4 \text{ m}^{-2} \text{ d}^{-1}$) and using the EC technique (-0.84 to $+2.73 \text{ mg CH}_4 \text{ m}^{-2} \text{ d}^{-1}$) were considerably lower than other low Arctic and sub Arctic wetlands (Olefeldt et al., 2013; Table S5). CH_4 is produced by methanogenic bacteria as a by-product of carbon metabolism in anaerobic soil environments and several factors control its production and release to the atmosphere including: (1) soil moisture/water table position (Moosavi and Crill, 1997; Christensen et al., 2000); (2) soil temperature (Christensen et al., 1995; Nakano et al., 2000; Ström et al., 2012); (3) vegetation species composition and primary productivity rates (Christensen et al., 1999; Ström et al., 2012); and (4) substrate availability (Ström et al., 2012).

Saturated, poorly-draining soils may sustain anaerobic conditions crucial for methanogens and also reduce habitat for CH_4 consuming methanotrophs above water

BGD

11, 1673–1706, 2014

Growing season high Arctic methane exchange

C. A. Emmerton et al.

Title Page

Abstract

Introduction

Conclusions

References

Tables

Figures

◀

▶

◀

▶

Back

Close

Full Screen / Esc

Printer-friendly Version

Interactive Discussion



Growing season high Arctic methane exchange

C. A. Emmerton et al.

Title Page

Abstract

Introduction

Conclusions

References

Tables

Figures

◀

▶

◀

▶

Back

Close

Full Screen / Esc

Printer-friendly Version

Interactive Discussion



tables. Soils in our wetland margin collars switched abruptly from net CH_4 consumption to net CH_4 emission when Skeleton Creek water saturated the previously dry organic soils. However, the EC flux tower measurement (near constant CH_4 emission) integrated the full wetland area suggesting that a significant portion of the wetland within the flux footprint was constantly near saturation following the rapid thaw period. This also may explain the lack of correlation between the soil moisture measured at the wetland margin and tower F_{CH_4} . Other studies have shown that F_{CH_4} may cease to relate to soil moisture once saturation occurs (Heikkinen et al., 2002a), and we suspect that was the case at our site.

Temperature influences CH_4 production and emission from wetlands, even in cold environments (van Huissteden et al., 2005). Soil temperature was strongly associated with F_{CH_4} measured by the EC tower primarily as a consequence of the switch from CH_4 uptake to loss during soil thaw. After this period, soil temperatures were relatively stable as discussed above. Without more variation in soil temperature during the growing season, it is difficult to assess the sensitivity of F_{CH_4} at these higher soil temperatures ($> 8\text{--}12^\circ\text{C}$). Although soil temperatures at our wetland were generally lower than wetlands which emit large amounts of CH_4 in low Arctic regions (e.g., Parmentier et al., 2011), we found that other high Arctic wetlands with similar soil temperatures still emitted significantly more CH_4 to the atmosphere (Christensen et al., 1995; Friborg et al., 2000; Tagesson et al., 2012) than at our site. Soil temperatures, therefore, did not appear to fully explain the low CH_4 fluxes at our wetland.

Several Arctic studies have demonstrated the importance of plant structures and root exudates to the emission of CH_4 from wetlands (e.g., Ström et al., 2012). Certain aerenchymous plants are known to be important conduits of CH_4 to the atmosphere (e.g., *Eriophorum*, *Carex*; Ström et al., 2003). Plants also release carbon and nutrient-rich exudates from roots during growth, supplying methanogenic communities with key substrate. At our wetland site, vegetation cover included a substantial portion of *Eriophorum* and *Carex* species (Edlund, 1994) similar to other high Arctic wetlands (e.g., Ström et al., 2003). Since F_{CH_4} measured by the EC tower correlated best with F_{CO_2}

during thaw and through the growing season (Fig. 4, Table S3), this suggests either plant productivity and/or plant mediated transport of CH₄ may have been important in driving the seasonal variations in F_{CH₄} at the wetland. However, F_{CO₂} rates at our wetland were comparable to other high Arctic wetlands (Friborg et al., 1997; Tagesson et al., 2012) and others much further south (e.g., Lafleur et al., 2012, Humphreys and Lafleur, 2011), suggesting that plant productivity also cannot explain low rates of CH₄ emission from our wetland.

Substrate quantity and quality are key factors supporting microbial viability in soils. Peat accumulates in cold wetland environments because cold temperatures restrict microbial decomposition of fresh litter while saturation limits more efficient aerobic degradation pathways. Peat can be a high-quality carbon source for microbes in Arctic wetlands because of its high labile carbon content (Updegraff et al., 1995). At Zackenberg, GR (74° N, 20° W), where soil temperatures and CO₂ fluxes were similar to our site, peat depths extended to over 30 cm encompassing most of the active layer during the growing season (Christensen et al., 2000). At the centre of our wetland, the organic layer was only 7 cm thick with a sharp transition to mineral soil (Fig. S4). Therefore, approximately one-quarter to two-thirds of the wetland active layer was comprised of organic-poor mineral soils likely not ideal for substantial microbial activity. Therefore, this wetland site, and presumably its low CH₄ emissions, was distinguished from other high Arctic wetlands. The reason for a roughly 7–10 cm deep accumulation of organic materials at the centre of this wetland, despite CO₂ uptake rates comparable to other high Arctic wetlands, may be due to its young age or could be due to other factors, such as redox conditions, that limit carbon accumulation and do not support methanogenesis.

4.3 CH₄ transport and transformations through a high Arctic wetland

The Skeleton Creek wetland complex is a typical meadow wetland within the Lake Hazen watershed and includes soils and productive lakes which are potentially important CH₄ emission sources to the atmosphere. Chemistry sampling of six aquatic

BGD

11, 1673–1706, 2014

Growing season high Arctic methane exchange

C. A. Emmerton et al.

Title Page

Abstract

Introduction

Conclusions

References

Tables

Figures

⏪

⏩

◀

▶

Back

Close

Full Screen / Esc

Printer-friendly Version

Interactive Discussion



5 sites upstream of the wetland (Fig. 1) showed significant changes in dissolved CH₄ concentrations (Table S6). Low CH₄ concentrations occurred in permafrost melt water (PF sites), high concentrations and emission rates were observed in productive lakes (Skeleton Creek, Pond 11; St. Louis, unpublished data), and concentrations declined
10 downstream in the creek (stream sites) and wetland areas (wetland inflow, outflow) due to a combination of evasion and/or oxidation. These results suggest that wetland complexes in the watershed are comprised of potential “hot-spots” of CH₄ production and emission with very little lateral transfer of CH₄ between these systems and to Lake Hazen. This model of CH₄ flow differs from similar studies in the south which showed
15 greater importance of lateral CH₄ transport in streams (e.g., Dinsmore et al., 2010).

One of these “hot-spots” of CH₄ production and emission was at our wetland site. Because Skeleton Creek delivered only small amounts of CH₄ to the wetland (despite high CH₄ concentrations draining from Skeleton Lake), we found that the majority of CH₄ emitted by the wetland was from CH₄ produced within its soils (Table 2). Although
20 we did not measure pore water CH₄ within the wetland, these results suggest that CH₄ emissions in the wetland were due to in-situ production exceeding oxidation even if we assume all creek CH₄ was evaded and included in F_{CH_4} measurements. Bacterial production of CH₄ in wetland soils was further supported by chemistry results downstream of the wetland which showed signatures of anaerobic microbial activity
25 in the form of: (1) increased NH₄⁺ : NO₃⁻ ratios; (2) increases in dissolved and particulate organic matter; and (3) decreases in oxidation-reduction potential. However, it is unclear if fast stream flow velocity and short water residence times in the wetland affected ultimate concentrations and redox potentials measured in stream water exiting the wetland. For example, redox potential measurements in stream water exiting the wetland (~ +20 mV) were generally higher than expected for methane-producing environments, possibly indicating that stream flow rates were too high to accumulate significant dissolved CH₄ and lower redox potentials.

**Growing season high
Arctic methane
exchange**C. A. Emmerton et al.

[Title Page](#)[Abstract](#)[Introduction](#)[Conclusions](#)[References](#)[Tables](#)[Figures](#)[Back](#)[Close](#)[Full Screen / Esc](#)[Printer-friendly Version](#)[Interactive Discussion](#)

4.4 CH₄ fluxes in the high Arctic and future climate

Most CH₄ studies on Arctic landscapes focus on emission sources to the atmosphere, such as peatlands and wetlands, because of their considerable coverage in the low- and sub-Arctic, and their important role in global CH₄ budgets (O'Connor et al., 2010, Kirschke et al., 2013). Results from the Lake Hazen watershed suggest that CH₄ consumption, not emission, is the larger, more consistent pattern of F_{CH_4} in the high Arctic because of limited wetland and pond coverage (Lehner and Döll, 2004). The consumption rates at Lake Hazen and other regions (Lamb et al., 2011; Flessa et al., 2008) across the high Arctic, suggest that this region cannot be overlooked as an important consumer of atmospheric CH₄. For example, within Quttinirpaaq National Park, approximately 99 % of the plant-habitable zone in the Park (22 672 km²) is considered to have moderate- to well-drained soils (Edlund, 1994) compared to only 1 % classified as saturated or poorly-drained soils. Considering the extensive area of dry, upland landscapes in the broader high Arctic, substantially more CH₄ measurements on dry soils are required to better delineate areas of CH₄ consumption and ultimately support more robust Arctic CH₄ models.

Future changes in soil temperature and moisture (ACIA, 2005) are expected to have landscape-level effects in the Arctic, with some models predicting 18 % of polar desert regions being replaced with southern tundra species by 2080, relative to 1960 (Sitch et al., 2003). Results from our contrasting high Arctic landscapes suggest that soil moisture, soil temperature, and substrate quantity are key factors determining the magnitude and direction of F_{CH_4} for these landscapes. However future changes within each ecosystem will likely result in different F_{CH_4} responses. Polar desert soils are mostly well-drained mineral soils with pockets of cryoturbated organic matter (Tarnocai et al., 2001). We found that CH₄ consumption rates were affected by soil temperature, but not vegetation cover. Therefore, we may expect that warming temperatures and longer growing seasons may increase CH₄ consumption rates. Predicted increases in precipitation and permafrost melt water on the landscapes, at least in the short-term, will

BDG

11, 1673–1706, 2014

Growing season high Arctic methane exchange

C. A. Emmerton et al.

Title Page

Abstract

Introduction

Conclusions

References

Tables

Figures

⏪

⏩

◀

▶

Back

Close

Full Screen / Esc

Printer-friendly Version

Interactive Discussion



**Growing season high
Arctic methane
exchange**C. A. Emmerton et al.

[Title Page](#)[Abstract](#)[Introduction](#)[Conclusions](#)[References](#)[Tables](#)[Figures](#)[Back](#)[Close](#)[Full Screen / Esc](#)[Printer-friendly Version](#)[Interactive Discussion](#)

likely not affect CH₄ consumption rates substantially because of this coarse-textured soil's poor ability to retain water. Until the soils develop greater organic matter content capable of retaining more water (to the point of limiting diffusivity), these soils should continue to consume CH₄ in a warmer and wetter climate. In the wetland, our mass budget analysis indicated some differences in CH₄ emission rates between the contrasting hydrological and meteorological conditions of 2011 and 2012, but overall emission rates were still very low. Although warming air temperatures and permafrost thaw should support methanogenic activity in the future, until substantial organic carbon accumulation occurs in this system, methanogenesis and thus CH₄ emission to the atmosphere will likely continue to be limited in poorly-draining soils in the Lake Hazen watershed. The rate at which landscapes can change is an important unknown for the future cycling of GHG's at this high latitude.

Supplementary material related to this article is available online at
[http://www.biogeosciences-discuss.net/11/1673/2014/](http://www.biogeosciences-discuss.net/11/1673/2014/bgd-11-1673-2014-supplement.pdf)
[bgd-11-1673-2014-supplement.pdf](http://www.biogeosciences-discuss.net/11/1673/2014/bgd-11-1673-2014-supplement.pdf).

Acknowledgements. This work was supported by the Natural Sciences and Engineering Research Council (Discovery Grants Program, Northern Research Supplement, Canada Graduate Scholarships), Natural Resources Canada (Polar Continental Shelf Project), the Canadian Circumpolar Institute (Circumpolar Boreal Alberta Research grant), and Aboriginal Affairs and Northern Development Canada (Northern Scientific Training Program). We thank the gracious support of the staff of Parks Canada at Quttinirpaaq National Park, the staff of Polar Continental Shelf Project-Resolute Bay, the staff of the University of Alberta Biogeochemical Analytical Service Laboratory, George Burba and the staff at LI-COR Biogeosciences, Claude Labine and the staff of Campbell Scientific Canada Corp., Duane Froese, Lauren Davie, Sarah Berkel, Kimberly Rondeau, Peter Carlson, and Jennifer Graydon.

The corresponding author, nor any co-authors, has any conflicts of interest with respect to this manuscript.

References

- ACIA: Arctic Climate Impact Assessment – Scientific Report, 1st edn., Cambridge University Press, New York, 2005.
- AMAP: AMAP Assessment Report: Arctic Pollution Issues, Arctic Monitoring and Assessment Programme (AMAP), Oslo, Norway, xii + 859 pp., 1998.
- AMAP: Arctic Climate Issues 2011: Changes in Arctic Snow, Water, Ice and Permafrost, SWIPA 2011 Overview Report, Arctic Monitoring and Assessment Programme (AMAP), Oslo, xi + 97 pp., 2012.
- Baldocchi, D. D.: Assessing the eddy covariance technique for evaluating carbon dioxide exchange rates of ecosystems: past, present and future, *Glob. Change Biol.*, 9, 479–492, 2003.
- Benstead, J. and King, G. M.: Response of methanotrophic activity in forest soil to methane availability, *FEMS Microbiol. Ecol.*, 23, 333–340, 1997.
- Christensen, T. R., Jonasson, S., Callaghan, T. V., and Havstrom, M.: Spatial variation in high-latitude methane flux along a transect across Siberian and European Tundra environments, *J. Geophys. Res.-Atmos.*, 100, 21035–21045, 1995.
- Christensen, T. R., Jonasson, S., Callaghan, T. V., Havstrom, M., and Livens, F. R.: Carbon cycling and methane exchange in Eurasian tundra ecosystems, *Ambio*, 28, 239–244, 1999.
- Christensen, T. R., Friborg, T., Sommerkorn, M., Kaplan, J., Illeris, L., Soegaard, H., Nordstroem, C., and Jonasson, S.: Trace gas exchange in a high-arctic valley, 1. Variations in CO₂ and CH₄ flux between tundra vegetation types, *Global Biogeochem. Cy.*, 14, 701–713, 2000.
- Dinsmore, K. J., Billett, M. F., Skiba, U. M., Rees, R. M., Drewer, J., and Helfter, C.: Role of the aquatic pathway in the carbon and greenhouse gas budgets of a peatland catchment, *Glob. Change Biol.*, 16, 2750–2762, 2010.
- Edlund, S. A.: Vegetation, in: Resource Description and Analysis – Ellesmere Island National Park Reserve, Natural Resource Conservation Section, Prairie and Northern Region, Parks Canada, Department of Canadian Heritage, Winnipeg, Canada, 55 pp., 1994.
- Flessa, H., Rodionov, A., Guggenberger, G., Fuchs, H., Magdon, P., Shibistova, O., Zrazhevskaya, G., Mikheyeva, N., Kasansky, O. A., and Blodau, C: Landscape controls of CH₄ fluxes in a catchment of the forest tundra ecotone in northern Siberia, *Glob. Change Biol.*, 14, 2040–2056, 2008.

BGD

11, 1673–1706, 2014

Growing season high Arctic methane exchange

C. A. Emmerton et al.

Title Page

Abstract

Introduction

Conclusions

References

Tables

Figures

◀

▶

◀

▶

Back

Close

Full Screen / Esc

Printer-friendly Version

Interactive Discussion



Growing season high Arctic methane exchange

C. A. Emmerton et al.

Title Page

Abstract

Introduction

Conclusions

References

Tables

Figures

◀

▶

◀

▶

Back

Close

Full Screen / Esc

Printer-friendly Version

Interactive Discussion



- France, R. L.: The Lake Hazen trough – a late winter oasis in a Polar Desert, *Biol. Conserv.*, 63, 149–151, 1993.
- Friborg, T., Christensen, T. R., and Sogaard, H.: Rapid response of greenhouse gas emission to early spring thaw in a subarctic mire as shown by micrometeorological techniques, *Geophys. Res. Lett.*, 24, 3061–3064, 1997.
- Friborg, T., Christensen, T. R., Hansen, B. U., Nordstroem, C., and Soegaard, H.: Trace gas exchange in a high-arctic valley, 2. Landscape CH₄ fluxes measured and modeled using Eddy correlation data, *Global Biogeochem. Cy.*, 14, 715–723, 2000.
- Froese, D. G., Westgate, J. A., Reyes, A. V., Enkin, R. J., and Preece, S. J.: Ancient permafrost and a future, warmer arctic, *Science*, 321, 1648–1648, 2008.
- Heikkinen, J. E. P., Elsakov, V., and Martikainen, P. J.: Carbon dioxide and methane dynamics and annual carbon balance in tundra wetland in NE Europe, Russia, *Global Biogeochem. Cy.*, 16, 1115, doi:10.1029/2002GB001930, 2002.
- Humphreys, E. R. and Lafleur, P. M.: Does earlier snowmelt lead to greater CO₂ sequestration in two low Arctic tundra ecosystems?, *Geophys. Res. Lett.*, 38, L09703, doi:10.1029/2011GL047339, 2011.
- Ibrom, A., Dellwik, E., Flyvbjerg, H., Jensen, N. O., and Pilegaard, K.: Strong low-pass filtering effects on water vapour flux measurements with closed-path eddy correlation systems, *Agr. Forest Meteorol.*, 147, 140–156, 2007.
- King, G. M.: Responses of atmospheric methane consumption by soils to global climate change, *Glob. Change Biol.*, 3, 351–362, 1997.
- Kirschke, S., Bousquet, P., Ciais, P., Saunois, M., Canadell, J. G., Dlugokencky, E. J., Bergamaschi, P., Bergmann, D., Blake, D. R., Bruhwiler, L., Cameron-Smith, P., Castaldi, S., Chevallier, F., Feng, L., Fraser, A., Heimann, M., Hodson, E. L., Houweling, S., Josse, B., Fraser, P. J., Krummel, P. B., Lamarque, J.-F., Langenfeld, R. L., Le Quéré, C., Naik, V., O'Doherty, S., Palmer, P. I., Pison, I., Plummer, D., Poulter, B., Prinn, R. G., Rigby, M., Ringeval, B., Santini, M., Schmidt, M., Shindell, D. T., Simpson, I. J., Spahni, R., Steele, L. P., Strode, S. A., Sudo, K., Szopa, S., van der Werf, J. R., Voulgarakis, A., van Weele, M., Weiss, R. F., Williams, J. E., and Zeng, G.: Three decades of global methane sources and sinks, *Nat. Geosci.*, 6, 813–823, 2013.
- Kling, G. W., Kipphut, G. W., and Miller, M. C.: Arctic lakes and streams as gas conduits to the atmosphere – implications for Tundra carbon budgets, *Science*, 251, 298–301, 1991.

Growing season high Arctic methane exchange

C. A. Emmerton et al.

Title Page

Abstract

Introduction

Conclusions

References

Tables

Figures

◀

▶

◀

▶

Back

Close

Full Screen / Esc

Printer-friendly Version

Interactive Discussion

- Kort, E. A., Wofsy, S. C., Daube, B. C., Diao, M., Elkins, J. W., Gao, R. S., Hints, E. J., Hurst, D. F., Jimenez, R., Moore, F. L., Spackman, J. R., and Zondlo, M. A.: Atmospheric observations of Arctic Ocean methane emissions up to 82° North, *Nat. Geosci.*, 5, 318–321, 2012.
- Lafleur, P. M., Humphreys, E. R., St Louis, V. L., Myklebust, M. C., Papakyriakou, T., Poissant, L., Barker, J. D., Pilote, M., and Swystun, K. A.: Variation in peak growing season net ecosystem production across the Canadian Arctic, *Environ. Sci. Technol.*, 46, 7971–7977, 2012.
- Lamb, E. G., Han, S., Lanoil, B. D., Henry, G. H. R., Brummell, M. E., Banerjee, S., and Siciliano, S. D.: A high Arctic soil ecosystem resists long-term environmental manipulations, *Glob. Change Biol.*, 17, 3187–3194, 2011.
- Lehner, B. and Doll, P.: Development and validation of a global database of lakes, reservoirs and wetlands, *J. Hydrol.*, 296, 1–22, 2004.
- LI-COR Biosciences: LI-7700 Open Path CH₄ Analyzer Instruction Manual (v.2; 984-10751), Lincoln, USA, 2011.
- Manabe, S. and Stouffer, R. J.: Multiple-century response of a coupled ocean-atmosphere model to an increase of atmospheric carbon-dioxide, *J. Climate*, 7, 5–23, 1994.
- Mauder, M. and Foken, T.: Impact of post-field data processing on eddy covariance flux estimates and energy balance closure, *Meteorol. Z.*, 15, 597–609, 2006.
- McDermitt, D., Burba, G., Xu, L., Anderson, T., Komissarov, A., Riensche, B., Schedlbauer, J., Starr, G., Zona, D., Oechel, W., Oberbauer, S., and Hastings, S.: A new low-power, open-path instrument for measuring methane flux by eddy covariance, *Appl. Phys. B-Lasers O.*, 102, 391–405, 2011.
- Moosavi, S. C. and Crill, P. M.: Controls on CH₄ and CO₂ emissions along two moisture gradients in the Canadian boreal zone, *J. Geophys. Res.-Atmos.*, 102, 29261–29277, 1997.
- Moosavi, S. C. and Crill, P. M.: CH₄ oxidation by tundra wetlands as measured by a selective inhibitor technique, *J. Geophys. Res.-Atmos.*, 103, 29093–29106, 1998.
- Nakano, T., Kuniyoshi, S., and Fukuda, M.: Temporal variation in methane emission from tundra wetlands in a permafrost area, northeastern Siberia, *Atmos. Environ.*, 34, 1205–1213, 2000.
- O'Connor, F. M., Boucher, O., Gedney, N., Jones, C. D., Folberth, G. A., Coppel, R., Friedlingstein, P., Collins, W. J., Chappellaz, J., Ridley, J., and Johnson, C. E.: Possible role of wetlands, permafrost, and methane hydrates in the methane cycle under future climate change: a review, *Rev. Geophys.*, 48, 2010RG000326, doi:10.1029/2010RG000326, 2010.

Growing season high Arctic methane exchange

C. A. Emmerton et al.

Title Page

Abstract

Introduction

Conclusions

References

Tables

Figures



Back

Close

Full Screen / Esc

Printer-friendly Version

Interactive Discussion



Olefeldt, D., Turetsky, M. R., Crill, P. M., and McGuire, A. D.: Environmental and physical controls on northern terrestrial methane emissions across permafrost zones, *Glob. Change Biol.*, 19, 589–603, 2013.

Overland, J. E., Wang, M., Walsh, J. E., Christensen, J. H., Kattsov, V. M., and Chapman, W. L.: Climate model projections for the Arctic. In: *Snow, water, ice and permafrost in the Arctic (SWIPA): climate change and the cryosphere*, Arctic Monitoring and Assessment Programme (AMAP), Oslo, 18 pp., 2011.

Parmentier, F. J. W., van Huissteden, J., van der Molen, M. K., Schaepman-Strub, G., Karsanaev, S. A., Maximov, T. C., and Dolman, A. J.: Spatial and temporal dynamics in eddy covariance observations of methane fluxes at a tundra site in northeastern Siberia, *J. Geophys. Res.-Bioge.*, 116, G03016, doi:10.1029/2010JG001637, 2011.

Peterson, B. J., Holmes, R. M., McClelland, J. W., Vorosmarty, C. J., Lammers, R. B., Shiklomanov, A. I., Shiklomanov, I. A., and Rahmstorf, S.: Increasing river discharge to the Arctic Ocean, *Science*, 298, 2171–2173, 2002.

Pfeffer, W. T., Harper, J. T., and O'Neel, S.: Kinematic constraints on glacier contributions to 21st-century sea-level rise, *Science*, 321, 1340–1343, 2008.

Roulet, N. T., Jano, A., Kelly, C. A., Klinger, L. F., Moore, T. R., Protz, R., Ritter, J. A., and Rouse, W. R.: Role of the Hudson-Bay lowland as a source of atmospheric methane, *J. Geophys. Res.-Atmos.*, 99, 1439–1454, 1994.

Sitch, S., Smith, B., Prentice, I. C., Arneth, A., Bondeau, A., Cramer, W., Kaplan, J. O., Levis, S., Lucht, W., Sykes, M. T., Thonicke, K., and Venevsky, S.: Evaluation of ecosystem dynamics, plant geography and terrestrial carbon cycling in the LPJ dynamic global vegetation model, *Glob. Change Biol.*, 9, 161–185, 2003.

Smith, K. A., Dobbie, K. E., Ball, B. C., Bakken, L. R., Sitaula, B. K., Hansen, S., Brumme, R., W. Borken et al.: Oxidation of atmospheric methane in northern European soils, comparison with other ecosystems, and uncertainties in the global terrestrial sink, *Glob. Change Biol.*, 6, 791–803, 2000.

Ström, L., Ekberg, A., Mastepanov, M., and Christensen, T. R.: The effect of vascular plants on carbon turnover and methane emissions from a tundra wetland, *Glob. Change Biol.*, 9, 1185–1192, 2003.

Ström, L., Tagesson, T., Mastepanov, M., and Christensen, T. R.: Presence of *Eriophorum scheuchzeri* enhances substrate availability and methane emission in an Arctic wetland, *Soil Biol. Biochem.*, 45, 61–70, 2012.

Growing season high Arctic methane exchange

C. A. Emmerton et al.

Title Page

Abstract

Introduction

Conclusions

References

Tables

Figures

◀

▶

◀

▶

Back

Close

Full Screen / Esc

Printer-friendly Version

Interactive Discussion



Tagesson, T., Molder, M., Mastepanov, M., Sigsgaard, C., Tamstorf, M. P., Lund, M., Falk, J. M., Lindroth, A., Christensen, T. R., and Strom, L.: Land-atmosphere exchange of methane from soil thawing to soil freezing in a high-Arctic wet tundra ecosystem, *Glob. Change Biol.*, 18, 1928–1940, 2012.

5 Tarnocai, C., Gould, J., Broll, G., and Achuff, P.: Ecosystem and trafficability monitoring for Quttinirpaaq National Park (11-year evaluation), Research branch, Agriculture and Agri-Food Canada, Ottawa, Canada, 169 pp., 2001.

Thompson, B.: Climate, in: Resource Description and Analysis – Ellesmere Island National Park Reserve, Natural Resource Conservation Section, Prairie and Northern Region, Parks
10 Canada, Department of Canadian Heritage, Winnipeg, Canada, 78 pp., 1994.

Updegraff, K., Pastor, J., Bridgham, S. D., and Johnston, C. A.: Environmental and substrate controls over carbon and nitrogen mineralization in northern wetlands, *Ecol. Appl.*, 5, 151–163, 1995.

15 van Huissteden, J., Maximov, T. C., and Dolman, A. J.: High methane flux from an arctic floodplain (Indigirka lowlands, eastern Siberia), *J. Geophys. Res.-Biogeo.*, 110, G02002, doi:10.1029/2005JG000010, 2005.

Wadham, J. L., Arndt, S., Tulaczyk, S., Stibal, M., Tranter, M., Telling, J., Lis, G. P., Lawson, E., Ridgwell, A., Dubnick, A., Sharp, M. J., Anesio, A. M., and Butler, C. E. H.: Potential methane reservoirs beneath Antarctica, *Nature*, 488, 633–637, 2012.

20 Walker, D. A., Reynolds, M. K., Daniels, F. J. A., Einarsson, E., Elvebakk, A., Gould, W. A., Katenin, A. E., Kholod, S. S., Markon, C. J., Melnikov, E. S., Moskalenko, N. G., Talbot, S. S., and Yurtsev, B. A.: The Circumpolar Arctic vegetation map, *J. Veg. Sci.*, 16, 267–282, 2005.

Walker, M. D., Wahren, C. H., Hollister, R. D., Henry, G. H. R., Ahlquist, L. E., Alatalo, J. M., Bret-Harte, M. S., Calef, M. P., Callaghan, T. V., Carrol, A. B., Epstein, H. E., Jonsdottir, I. S., Klein, J. A., Magnusson, B., Molau, U., Oberbauer, S. F., Rewa, S. P., Robinson, C. H., Shaver, G. R., Suding, K. N., Thompson, C. C., Tolvanen, A., Totland, O., Turner, P. L.,
25 Tweedie, C. E., Webber, P. J., and Wookey, P. A.: Plant community responses to experimental warming across the tundra biome, *P. Natl. Acad. Sci. USA*, 103, 1342–1346, 2006.

Webb, E. K., Pearman, G. I., and Leuning, R.: Correction of flux measurements for density effects due to heat and water-vapor transfer, *Q. J. Roy. Meteor. Soc.*, 106, 85–100, 1980.

30 Whalen, S. C. and Reeburgh, W. S.: Consumption of atmospheric methane by Tundra soils, *Nature*, 346, 160–162, 1990.

Whalen, S. C. and Reeburgh, W. S.: Moisture and temperature sensitivity of CH₄ oxidation in boreal soils, *Soil Biol. Biochem.*, 28, 1271–1281, 1996.

Wille, C., Kutzbach, L., Sachs, T., Wagner, D., and Pfeiffer, E. M.: Methane emission from Siberian arctic polygonal tundra: Eddy covariance measurements and modeling, *Glob. Change Biol.*, 14, 1395–1408, 2008.

5

BGD

11, 1673–1706, 2014

Growing season high Arctic methane exchange

C. A. Emmerton et al.

Title Page

Abstract

Introduction

Conclusions

References

Tables

Figures



Back

Close

Full Screen / Esc

Printer-friendly Version

Interactive Discussion



Growing season high Arctic methane exchange

C. A. Emmerton et al.

Table 1. Mean (± 1 SE) daily methane flux (F_{CH_4}) and environmental variables during the chamber measurement period of several growing seasons at the desert and wetland sites.

	F_{CH_4} (mg CH ₄ m ⁻² d ⁻¹)	n (#)	Air _T (°C)	PAR ($\mu\text{mol m}^{-2} \text{s}^{-1}$)	SHF (W m ⁻²)	Soil _M (% v/v)	Soil _T (°C)	n (daily)
<i>Desert</i>								
2008	-1.13 \pm 0.05	4	7.3 \pm 0.6	520 \pm 22	14.6 \pm 2.7	17.0 \pm 2.2	11.4 \pm 0.4	24
2009	-1.49 \pm 0.12	5	10.0 \pm 0.7	678 \pm 20	26.9 \pm 1.1	9.4 \pm 0.1	12.9 \pm 0.5	20
2010	-1.54 \pm 0.07	4	9.8 \pm 0.6	685 \pm 26	28.8 \pm 1.9	17.5 \pm 0.2	12.7 \pm 0.5	25
2011	-1.78 \pm 0.20	7	9.5 \pm 0.3	678 \pm 22	32.1 \pm 1.4	16.9 \pm 0.1	13.7 \pm 0.3	34
2012	-0.91 \pm 0.23	7	8.1 \pm 0.4	520 \pm 32	26.5 \pm 2.0	15.4 \pm 0.1	11.1 \pm 0.4	33
<i>Wetland</i>								
2010	-0.05 \pm 0.29	4	11.0 \pm 0.8	652 \pm 24	7.8 \pm 0.8	79.0 \pm 1.3	10.6 \pm 0.4	22
2011	0.43 \pm 0.44	7	10.7 \pm 0.4	657 \pm 21	6.4 \pm 0.6	80.6 \pm 0.6	10.8 \pm 0.2	34
2012	0.16 \pm 0.14	7	9.1 \pm 0.5	507 \pm 31	8.1 \pm 0.4	58.2 \pm 1.3	8.2 \pm 0.1	33

Air_T: air temperature; PAR: photosynthetically active radiation; SHF: soil heat flux at 5 cm depth; Soil_M: volumetric soil moisture; Soil_T: soil temperature

[Title Page](#)
[Abstract](#)
[Introduction](#)
[Conclusions](#)
[References](#)
[Tables](#)
[Figures](#)
[Back](#)
[Close](#)
[Full Screen / Esc](#)
[Printer-friendly Version](#)
[Interactive Discussion](#)


Growing season high Arctic methane exchange

C. A. Emmerton et al.

[Title Page](#)

[Abstract](#)

[Introduction](#)

[Conclusions](#)

[References](#)

[Tables](#)

[Figures](#)

[◀](#)

[▶](#)

[◀](#)

[▶](#)

[Back](#)

[Close](#)

[Full Screen / Esc](#)

[Printer-friendly Version](#)

[Interactive Discussion](#)



Table 2. Flow-weighted mean concentrations (± 1 WSD) of several chemicals in Skeleton Creek water upstream and downstream of the wetland during the 2011 and 2012 growing seasons. All chemicals are reported in $\mu\text{mol L}^{-1}$ except for water temperature ($^{\circ}\text{C}$) and oxidation-reduction potential (mV).

Parameter	2011			2012		
	Wetland Inflow	Wetland Outflow	% change	Wetland Inflow	Wetland Outflow	% change
Dissolved CH_4	0.029 ± 0.018	0.002 ± 0.002	−94 %	0.005 ± 0.004	0.001 ± 0.005	−70 %
Dissolved CO_2	52 ± 17	61 ± 16	17 %	72 ± 29	65 ± 10	−9 %
NO_3^-	0.10 ± 0.07	0.06 ± 0.03	−42 %	0.04 ± 0.00	0.04 ± 0.00	0 %
NH_4^+	0.99 ± 0.25	1.01 ± 0.26	1 %	0.53 ± 0.13	0.76 ± 0.07	42 %
DON	17.5 ± 0.5	20.6 ± 1.3	17 %	19.4 ± 1.0	22.0 ± 0.5	13 %
TDN	18.5 ± 0.7	21.7 ± 1.3	17 %	20.0 ± 0.9	22.8 ± 0.5	14 %
DOC	421 ± 21	479 ± 27	14 %	497 ± 28	549 ± 19	10 %
Particles (PN)	0.41 ± 0.09	1.07 ± 0.68	160 %	n/a	n/a	n/a
Water T	10.8 ± 0.9	11.2 ± 0.9	3 %	8.1 ± 1.6	7.8 ± 1.4	−4 %
ORP	n/a	n/a	n/a	53 ± 57	21 ± 17	−60 %

NO_3^- : dissolved nitrate; NH_4^+ : dissolved ammonium; DON: dissolved organic nitrogen; TDN: total dissolved nitrogen; DOC: dissolved organic carbon; PN: particle-bound nitrogen; Water $_T$: water temperature; ORP: oxidation-reduction potential.

Growing season high Arctic methane exchange

C. A. Emmerton et al.

[Title Page](#)
[Abstract](#)
[Introduction](#)
[Conclusions](#)
[References](#)
[Tables](#)
[Figures](#)
[Back](#)
[Close](#)
[Full Screen / Esc](#)
[Printer-friendly Version](#)
[Interactive Discussion](#)


Table 3. Wetland mass balance (Eq. 2) of CH_4 for the 2011 and 2012 growing seasons including stream input (I_{CH_4}) and output (O_{CH_4}), flux of methane (F_{CH_4}) and estimates of net methane production within wetland soils (NP_{CH_4}). Asterisk indicates F_{CH_4} to the atmosphere was modelled.

	Stream flow (m^3)	n (#)	CH_4 transfer (g)
2011 (36 days from 28 Jun to 2 Aug)			
I_{CH_4}	29 216	17	13.8
O_{CH_4}	25 580	17	0.0
$F_{\text{CH}_4}^*$	–	n/a	4625
NP_{CH_4} ($4.4 \text{ mg CH}_4 \text{ m}^{-2} \text{ d}^{-1}$)	–	–	4612
2012 (34 days from 3 Jul to 5 Aug)			
I_{CH_4}	6578	8	0.5
O_{CH_4}	5451	6	0.1
F_{CH_4}	–	34	2002
NP_{CH_4} ($2.0 \text{ mg CH}_4 \text{ m}^{-2} \text{ d}^{-1}$)	–	–	2002

Growing season high Arctic methane exchange

C. A. Emmerton et al.

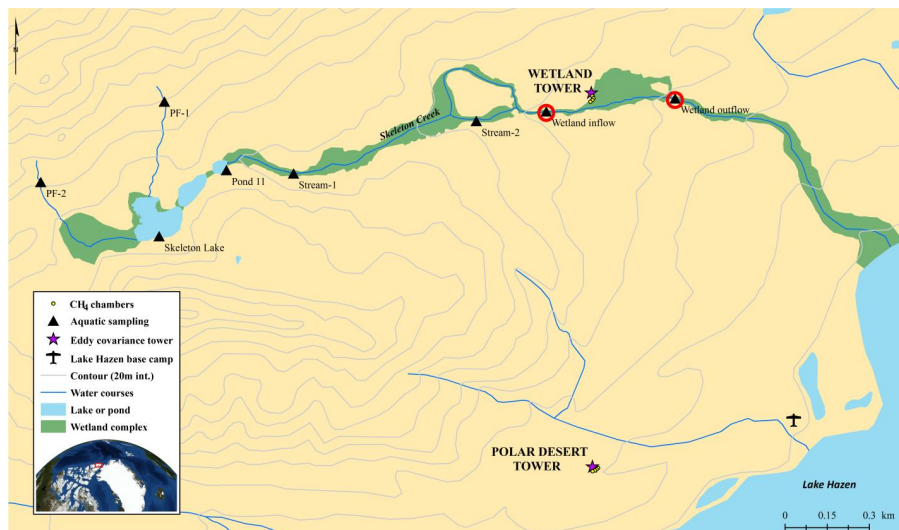


Fig. 1. Lake Hazen base camp in Quttinirpaaq National Park, Nunavut, Canada (81.8° N, 71.4° W). Both the polar desert and meadow wetland study sites are shown with static chamber, eddy covariance and aquatic CH₄ sampling locations indicated. Emphasis added to aquatic sites upstream and downstream of the wetland. PF sites indicate permafrost seep streams and Stream sites indicate Skeleton Creek sites.

Title Page

Abstract

Introduction

Conclusions

References

Tables

Figures

◀

▶

◀

▶

Back

Close

Full Screen / Esc

Printer-friendly Version

Interactive Discussion



Growing season high Arctic methane exchange

C. A. Emmerton et al.

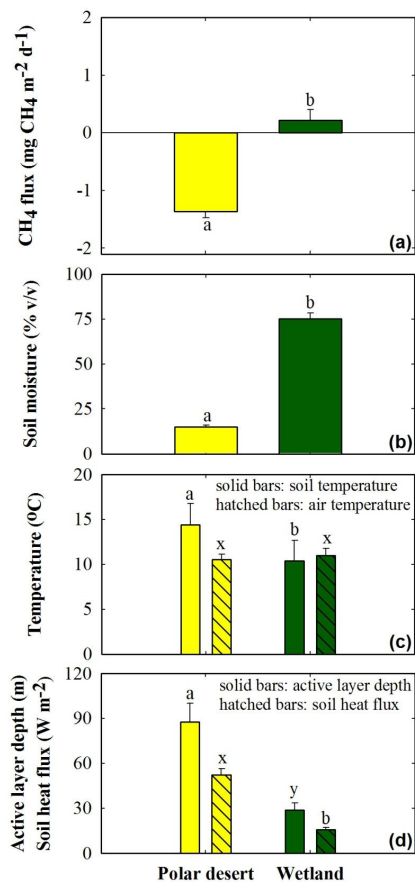


Fig. 2. Comparison of 2008–2012 mean methane flux (F_{CH_4} ; $\pm 1\text{SE}$) measured in chambers **(a)** and other environmental variables **(b–d)** between the desert ($n = 27$) and wetland ($n = 18$) sites. Letters indicate if there were statistically significant differences between sites.

[Title Page](#)
[Abstract](#)
[Introduction](#)
[Conclusions](#)
[References](#)
[Tables](#)
[Figures](#)

[Back](#)
[Close](#)
[Full Screen / Esc](#)
[Printer-friendly Version](#)
[Interactive Discussion](#)


Growing season high Arctic methane exchange

C. A. Emmerton et al.

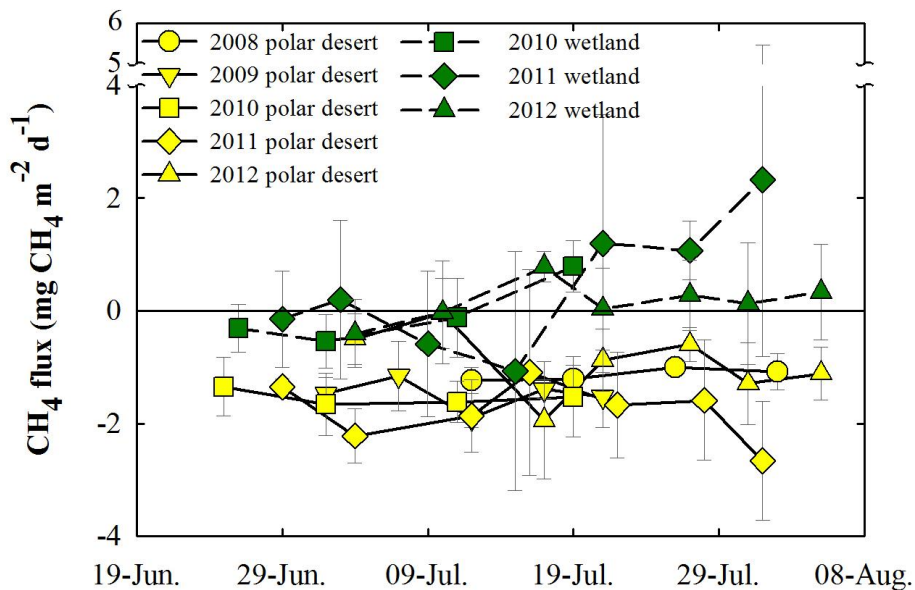


Fig. 3. Mean methane fluxes (F_{CH_4} ; $\pm 1\text{SD}$) from four polar desert and four wetland static chambers during the 2008 to 2012 growing seasons.

Title Page

Abstract

Introduction

Conclusions

References

Tables

Figures

◀

▶

◀

▶

Back

Close

Full Screen / Esc

Printer-friendly Version

Interactive Discussion



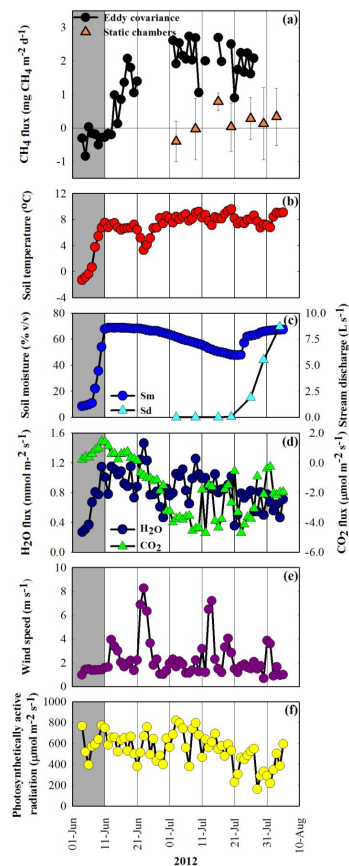


Fig. 4. Comparison of mean daily eddy covariance methane flux (F_{CH_4}); **(a)** at the wetland and several mean daily environmental variables **(b–f)** during the 2012 growing season. Shaded bars highlight the period of rapid soil thaw.

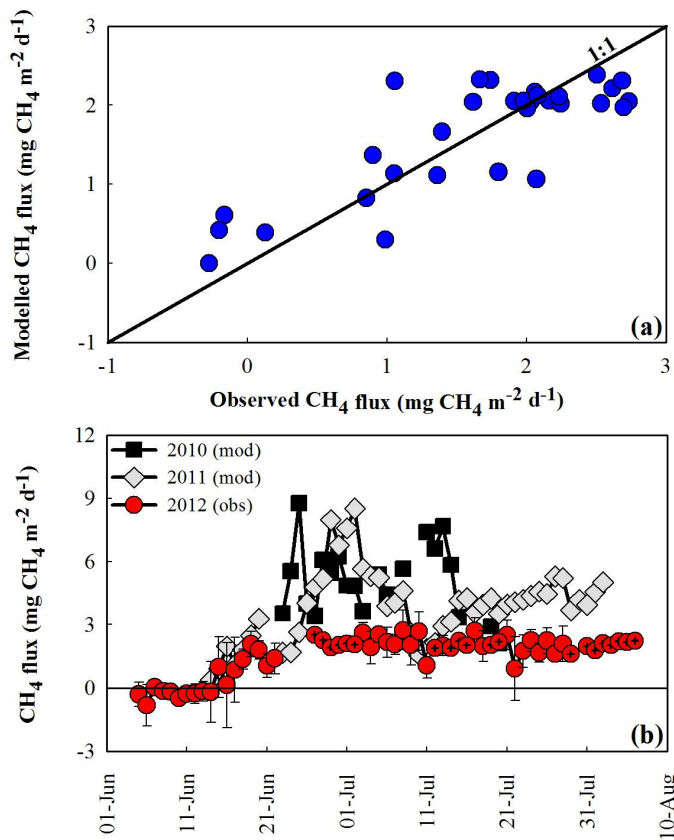


Fig. 5. Observed mean daily methane fluxes (F_{CH_4}) measured by eddy covariance at the wetland during the 2012 growing season vs. modelled 2012 F_{CH_4} as described in Eq. (1) **(a)**. Modelled data were not statistically different from observed data (paired t test; $p = 0.98$). Observed, gap-filled (cross-hairs) F_{CH_4} ($\pm 95\%$ CI) during 2012 and modelled fluxes during 2010 and 2011 are shown in **(b)**. Modelled F_{CH_4} using LI-7500 CO₂ fluxes are shown.