

Associate Editor Initial Decision: Publish subject to technical corrections (25 Mar 2015) by Dr.

Jack Middelburg

Comments to the Author:

Dear Dr. Kedzierski

5

Thank you for submitting this paper to Biogeosciences. I have read the reviews, the rebuttals and your revised manuscript. Science does not always progress by consensus and I therefore decided to accept your paper despite the reservations expressed by the constructive, yet critical referee. I do however believe that you might consider balancing the conclusion section a little more to the link with

10 Thioploca alike organisms rather than the long-distance electron transfer.

While reading I identified a few technical corrections:

p.1., l. 11 at the oxic-anoxic interface

p.1, l. 26 oxic-anoxic transition zone of recent marine sediments...

p.7, l. 29 species....are....

15 p.9, l. 2: proven

With best regards,

Jack Middelburg, Associate editor

20 **Authors response**

Dear Dr. Middelburg,

Thank you very much for your kind consideration and your comments. We are more than happy to have a chance to publish our manuscript in your prestigious journal.

We made all corrections are needed. However, we left our conclusion section as it was. We
25 realize that long-distance electron transfer in living *Thioploca*-like bacteria can be too far going idea, however, let it remains our scientific provocation.

Sincerely yours

Mariusz Kędzierski and Co-Authors

Fossilized bioelectric wire – the trace fossil *Trichichnus*

M. Kędzierski¹, A. Uchman¹, Z. Sawlowicz¹ & A. Briguglio^{2,3}

¹Institute of Geological Sciences, Jagiellonian University, Oleandry 2a, 30-063 Kraków, Poland, mariusz.kedzierski@uj.edu.pl

²Institut für Paläontologie, Universität Wien, Geozentrum, Althanstrasse 14, 1090 Vienna, Austria

³Faculty of Science, Department of Petroleum Geoscience, Universiti Brunei Darussalam,

Jalan Tungku Link, Gadong BE1410, Brunei Darussalam

Abstract

The trace fossil *Trichichnus* is proposed as an indicator of fossil bioelectric bacterial activity at the ~~interface~~-oxic–anoxic interface zone of marine sediments. This fulfils the idea that such processes, commonly found in the modern realm, should be also present in the geological past. *Trichichnus* is an exceptional trace fossil due to its very thin diameter (mostly less than 1 mm) and common pyritic filling. It is ubiquitous in some fine-grained sediments, where it has been interpreted as a burrow formed deeper than any other trace fossils, below the redox boundary. *Trichichnus* formerly referred to as deeply burrowed invertebrates, has been found as remnant of a fossilized intrasediment bacterial mat that is pyritized. As visualized in 3-D by means of X-ray computed microtomography scanner, *Trichichnus* forms dense filamentous fabric, which reflects that produced by modern large, mat-forming, sulphide-oxidizing bacteria, belonging mostly to *Thioploca*-related taxa, which are able to house a complex bacterial consortium. Several stages of *Trichichnus* formation, including filamentous, bacterial mat and its pyritization, are proposed to explain an electron exchange between oxic and suboxic/anoxic layers in the sediment. Therefore, *Trichichnus* can be considered a fossilized “electric wire”.

1 Introduction

Bioelectric bacterial processes are omnipresent phenomena in the ~~recent~~-oxic–anoxic transition zones of recent marine sediments (see Nielsen and Risgaard-Petersen, 2015 for

review). It is intriguing that they have not so far been recognized from the geological past as it was suggested by Risgaard-Petersen et al. (2012). One reason could be that effects of such bacterial processes, leading to oxygenation of the anoxic sediments on the sea floor, are eventually destroyed by subsequent bioturbation (Malkin et al., 2014). We propose here that the usually pyritized marine trace fossil *Trichichnus* Frey, 1970 can be interpreted as a fossil record of complex bioelectrical operations resulting from bacterial activities in the oxygen depleted part of marine sediments. *Trichichnus* is a branched or unbranched, straight to winding, hair-like, cylindrical structure, mostly 0.1–0.7 mm in diameter, commonly pyritized, oriented at various angles (mostly vertical) with respect to the bedding. The common pyritization is a particular feature of *Trichichnus*, which is generally absent in other trace fossils. *Trichichnus* is reported from both shallow- and deep-sea, mostly fine-grained sediments (Frey, 1970; Wetzel, 1983). It ranges from the Cambrian (Stachacz, 2012) to the Holocene (Wetzel, 1983). There are distinguished *Trichichnus appendicus* displaying thin appendages; and *T. linearis* or *T. simplex* probably differ only in the presence of a lining, which likely is diagenetic in origin (see Uchman, 1999, for review). *Trichichnus* is common in sediments in which pore waters were poorly oxygenated (McBride and Picard, 1991; Uchman, 1995) and is considered to be one of the first trace fossils recording colonization of the sea floor after improvement of oxygenation, penetrating sediments below the redox boundary, and having a connection to oxygenated waters on the sea floor (Uchman, 1995). It belongs to the ethological category chemichnia distinguished for trace fossils produced by organisms feeding by means of chemosymbiosis (Uchman, 1999).

Trichichnus was previously interpreted as a deep-tier burrow produced by unknown opportunistic invertebrates in poorly oxygenated sediments (McBride and Picard, 1991; Uchman, 1995). It has also been compared to an open burrow in modern deep-sea sediments more than 2 m long and no more than 0.5 mm thick (Thomson and Wilson, 1980; Weaver and Schultheiss, 1983). The sipunculid worm *Golfingia* has been considered as a possible modern example of tracemakers of very narrow and long tubes similar to *Trichichnus* (Romero-Wetzel, 1987). However, 3-D microCT scanner images of *Trichichnus* presented in this paper reflect fabric produced by modern, large, sulphur bacteria. Therefore, a new interpretation of *Trichichnus* is possible by its comparison to modern sulphur bacteria such as *Thioploca* spp. and their post-mortem history. Moreover, we propose a biogeochemical model of *Trichichnus* assisted electron transfer between different redox zones of the sediment.

2 Material and methods summary

The morphology and chemistry of *Trichichnus* from several samples, represented by Albian turbiditic marly mudstones (Silesian Nappe, Polish Carpathians); Valanginian–Hauterivian pelagic marlstones (Kościełiska Marl Formation, the Tatra Mts.) and Eocene silty shales

(Magura Nappe, Polish Carpathians), were studied using a scanning electron microscope with field emission (FE-SEM, Hitachi S4700), equipped with EDS (Noran Vantage) which allows to determine of chemical compounds of the examined objects. The studies on morphology and infilling of *Trichichnus* were also supported using the polarising light microscope Nikon Eclipse Pol E-600. All of the above were carried out at the Institute of Geological Sciences of the Jagiellonian University in Kraków. Moreover, the X-ray computed microtomography (microCT) scanner (SkyScan 1173) available at the Institute of Palaeontology, University of Vienna, was used to carry out the main research on the spatial organization of the *Trichichnus* (Tab. 1).

All samples of trace fossil *Trichichnus* presented in the paper are housed at the Institute of Geological Sciences, Jagiellonian University, Kraków, Poland, collection of Alfred Uchman and Zbigniew Sawłowicz. No permits were required for the described study, which complied with all relevant regulations.

3 Results

With the naked eye or under light microscope *Trichichnus* is easily distinguished in all rocks samples mainly by its different colour (Fig. 1a–d). Macroscopically *Trichichnus* is similar in all samples, and shows a light halo around the trace, except in burrows without iron mineral infillings (Fig. 1c and d). Neither the length nor width of the trace depends on the type of the host rock. The boundary between the trace fossil and the rock is usually sharp (Fig. 1e).

The SEM studies revealed that majority of the studied *Trichichnus* is filled with framboids and framboidal aggregates (Fig. 1e and f). Framboidal forms are composed of iron sulphides (most probably pyrite), Fe oxy/hydroxides or a mixture of both. The microcrystals building framboids are generally well-developed and their sizes are usually about 1–2 µm, generally dependent on the size of the framboid. Most of the microcrystals in framboids are closely packed. SEM-EDS study shows that the colourful halo around traces does not reveal any chemical differences from the composition of the surrounding rock. It is likely that the

amount of iron minerals in the halo is below the detection limit of the EDS method. Apart from the iron minerals, subordinate amounts of several other minerals, generally corresponding to the host rock, such as calcite, quartz and gypsum, are observed.

MicroCT scans allowed three dimensional visualization of several *Trichichnus* embedded in a dark mudstone from the Oligocene Menilite Formation in the Western Carpathians, Poland. The density difference between the sediment matrix and the pyritic trace fossil fillings allowed extremely accurate three dimensional visualization (Fig. 2). The results show a very dense fabric composed of *Trichichnus* fillings of variable size and orientation, which are only partly visible on a sample surface. Since the resolution of the 3-D model here presented is 9.97 μm , all the structures larger than 10 μm are visible and renderable. The distribution of diameters of the traces displays two major peaks: 600 μm for the thickest traces and 90 μm for the very thin ones (Fig. 2a; Supplement).

The *Trichichnus* morphology seen in 3-D microCT scanner image (Fig. 2a—c) is similar to structures produced by filamentous bacteria (e.g., Pfeffer et al., 2012) or to large, mat-forming, filamentous sulphur bacteria, e.g., *Thioploca* spp. (Fossing et al., 1995 – Fig. 3a; Schulz et al., 1996 – Fig. 8; Jørgensen and Gallardo, 1999 – Fig. 5) (see also Heutell et al., 1996). The microCT scanner images also reveal different spatial organizations, density, diameters and shapes of the *Trichichnus*. These correspond to different parts of vertical system of the *Thioploca* mat in sediment. Also the density of *Trichichnus* (Fig. 2a), which constitutes 3.1% of the whole scanned sediment volume, is comparable to the *Thioploca* mat in their upper shallow subsurface part. Other 3-D scanner images (Fig. 2b and c) show lowered density of *Trichichnus*, comparable to middle and bottom parts of the *Thioploca* filamentous mat spatial system.

4 Discussion

Three-dimensional reconstructions of *Thioploca* spp. (Fossing et al., 1995; Schulz et al., 1996; Jørgensen and Gallardo, 1999) resemble *Trichichnus* in the 3-D scanner images. Moreover, the common pyritization of *Trichichnus* is related to sulphate-reducing bacteria, like δ -proteobacteria *Desulfovibrio* sp., which can co-occur with sulphur-oxidizing bacteria, such as *Beggiatoa* or *Thioploca* (e.g., Jiang et al., 2012). Therefore, we consider *Thioploca*-like, mat-forming, large, sulphur bacteria and related filamentous sulphide-oxidizing bacteria (see

Teske et al., 1995) as a tracemaker of *Trichichnus* tunnels and their spatial organization. The *Thioploca*-like mat, usually hosting other bacteria or small protists (e.g., Buck et al., 2014), combined with the post-mortem history of sulphur bacterial mat systems, are referred to the idea of bioelectrochemical systems (BESs), including the microbial fuel cells (MFCs) and biogeobatteries (e.g., Naudet et al., 2003, 2004; Naudet and Revil, 2005; Linde and Revil, 2007; Ntarlagiannis et al., 2007; Logan, 2009; Teske et al., 2009; Nielsen and Girguis, 2010; Revil et al., 2010; Borole et al., 2011; Hubbard et al., 2011; Risgaard-Petersen et al., 2014; Nielsen and Risgaard-Petersen, 2015 for review).

In biogeobattery systems, bacteria are interconnected cells to cells or cells to mineral surfaces via electrically conductive appendages – bacterial pili (nanowires) – making a complex electroactive network (biofilm) (Ntarlagiannis et al., 2007; Revil et al., 2010; Borole et al., 2011; Reguera et al., 2005; Gorby et al., 2006; El-Naggar et al., 2010; Nielsen et al., 2010; Risgaard-Petersen et al., 2014; Nielsen and Risgaard-Petersen, 2015). The electron transport in BESs may be realized in various ways, including transfer through long bacterial nanowires or along biofilm matrix (Lovley, 2008). Its magnitude and duration mostly depend on atmospheric oxygen (electron acceptor) availability that generates electrical self-potentials in the sediments between oxidized and anoxic zones (see Ntarlagiannis, 2007; Risgaard-Petersen et al., 2014). Studies reporting extracellular bioelectric current concerned dissimilatory metal-reducing bacteria, such as *Geobacter sulfurreducens*, *Shewanella oneidensis* MR-1 and the thermophilic, fermentative bacterium *Pelotomaculum thermopropionicum* or the oxygenic phototrophic cyanobacterium *Synechocystis* (Borole et al., 2011). Natural conductive minerals (e.g., magnetite, greigite – an intermediate stage for pyrite formation) can facilitate electron transfer between different species of microbes. Presumably microbes should preferentially use mineral particles, discharging electrons to and accepting them from mineral surfaces, in particular for long-distance electron transfer (Kato et al., 2012). The interaction between minerals and bacteria can be quite complex as Kato et al. (2013) showed that e.g., *G. sulfurreducens* constructed two distinct types of extracellular electron transfer (EET) paths, in the presence and absence of iron-oxide minerals. It is worth noting that large scale sulphide ores, where pyrite is commonly a main component, have been regarded as geobatteries for many years and used by geophysicists for an exploration. In natural electrochemical processes ore serves as a conductor to transfer the electrons from anoxic to oxic environments (Sato and Mooney, 1960; Naudet et al., 2003). Newer reports show that coupling of geochemical

reactions between shallower and deeper layers of the sediment can be also realized by vertical centimetre-long filaments of multicellular bacteria of the family Desulfobulbaceae, the so-called cable bacteria (Pfeffer et al., 2012; Risgaard-Petersen et al., 2014; Schauer et al., 2014). Nevertheless, only the giant sulphur bacteria, so-called a “macro-bacteria” are able to produce

5 mat spatial system in the scale of *Trichichnus*. Macro-bacteria of Beggiatoacea family are considered to be the most direct competitors to cable bacteria at the interface of oxic–anoxic zone of marine sediments (see Nielsen and Risgaard-Petersen, 2015). We propose *Thioploca* spp., one of the genus of Beggiatoacea family (see Salman et al., 2011), as a tracemaker of *Trichichnus*.

10 Large communities of the sulphur bacteria *Thioploca* spp. produce the filaments consisting of thousands of cells that can penetrate 5–15 cm down into the sediment. These filaments (trichomes), bundled in common slime sheaths, make a dense bacterial mat, where the density decreases with depth leaving single sheaths in the deepest part of the spatial system of the mat. The *Thioploca* sheaths, rarely branched, extend in different directions, mostly vertically.

15 One sheath can accommodate up to 100 filaments of 15–40 µm in diameter each, giving about 4 mm for the maximum diameter of the sheath (Fossing et al., 1995; Schulz et al., 1996).

Thioploca trichomes gliding within sheaths can migrate through several redox horizons, coupling the reduction of nitrate in the overlying waters and the oxidation of dissolved sulphide in the sulphate reduction zone (Fossing et al., 1995; Heutell et al., 1996). Therefore,

20 the sheaths are used as communication tubes and enable the sulphur bacteria to switch vertically between nitrate and sulphide (electron acceptor and donor, respectively). This sulphide oxidization mechanism leads to accumulation of elemental sulphur globules in the bacterial cells. Moreover, *Thioploca* trichomes may leave their sheaths and move into other sheaths, thus, one sheath can be occupied by different species (Jørgensen and Gallardo, 1999).

25 Empty sheaths were found even at >20 cm depth into the sediment. In contrast, the sheaths were not found shallower than a depth of a few centimetres in the sediments. Therefore, the surface and topmost part of the *Thioploca* mat system is formed by single bacterial filaments only (Schulz et al., 1996). However, brackish/freshwater *T. ingraca* may not form any mats at the sediment surface, showing biomasses peak 4–7 cm below the sediment surface (Høgslund

30 et al., 2010).

The *Thioploca* sheaths – either filled with trichomes or abandoned – may be closely associated with other filamentous sulphate-reducing bacteria like *Desulfonema* sp. (Jørgensen and Gallardo, 1999; Teske et al., 2009). *Thioploca* spp. are known from both marine and lake environments. Nevertheless, their mass occurrences are related to high organic production and oxygen depletion, e.g., the Chile and Peru offshore upwelling system (Jørgensen and Gallardo, 1999).

Pyritized organic remains are common in the sedimentary record and various mechanisms of fossil pyritization have been described (e.g., Canfield and Raiswell, 1991; Briggs et al., 1996). Apart from the similarity between the *Trichichnus* fabric and spatial organization of the *Thioploca* mat system, the common pyritization of *Trichichnus* also indicates its close relation to the sulphate-reducing bacteria. Schulz et al. (2000) observed that empty sheaths of *Thioploca* from the Bay of Concepcion during autumn/winter time were stained with iron sulphides. As the most abundant metal sulphide in nature, pyrite FeS₂ has a major influence on the biogeochemical cycles of sulphur and iron, and through its oxidation also of oxygen.

There have been several important reviews on sedimentary pyrite formation (e.g., Berner, 1970; Schoonen, 2004; Rickard and Luther, 2007, and references therein), and specifically on iron sulphide framboids (e.g., Love and Amstutz, 1966; Raiswell, 1982; Wilkin and Barnes, 1997; Sawłowicz, 2000; Ohfuji and Rickard, 2005, and references therein). It is important to stress that at low temperature pyrite growth is usually preceded by the formation of unstable iron monosulphides, such as mackinawite and greigite. The latter is the ferrimagnetic inverse thiospinel of iron. Pyrite, like other sulphide minerals, is a semiconductor determined to be “semi-metallic” but its conductivity in different admixtures varies widely between 0.02 and 562 (Ωcm)⁻¹ (Rimstidt and Vaughan, 2003, and references therein).

Pyrite has a great potential in both interaction with microorganisms and electron transfer as its range of morphological, chemical and electric characteristics is quite large. Both iron and sulphur, necessary for pyrite formation, are pivotal for microbes. For instance, more than 50% of reduced sulphate in sediments inhabited by *Thioploca* off the Chilean coast is accumulated in the pyrite pool (Ferdelman et al., 1997). Iron is an important carrier of electrons in microbial ecosystems (Wielenga et al., 2001) and bacteria play important role in different processes of iron oxidation and reduction (Weber et al., 2006). Interestingly, some Firmicutes bacteria species *Desulfitobacterium frappieri* [arcis](#) capable of both reducing Fe³⁺ with H₂ as an electron donor and oxidizing Fe²⁺ with nitrate as an electron acceptor (Shelobolina, 2003).

In sedimentary environments the major source of sulphur incorporated into iron sulphides is H_2S or HS^- resulting from bacterial sulphate reduction. Sulphate-reducing bacteria (SRB) use sulphate as the terminal electron acceptor of their electron transport chain (e.g., Widdel and Hansen, 1992). SRB are usually regarded as strictly anaerobic, but recent investigations

showed that SRB are both abundant and active in the oxic zones of mats (see Baumgartner et al., 2006 for review). Iron monosulphides and pyrite, including framboids, are quite common in some microbial mats (e.g., Popa et al., 2004; Huerta-Diaz et al., 2012) but their formation is complicated and difficult to study. Nevertheless, sulphur content and sulphur speciation may not correlate to microbial metabolic processes (Engel et al., 2007).

Oxidation of iron sulphides is one of the most common processes in marine sediments. For example, Passier et al. (1999) reported that in the Mediterranean sapropels the percentage of initially formed iron sulphides that were re-oxidized varied from 34 to 80%. Oxidation of iron sulphide framboids to iron (hydro)oxides is often observed in fossils (e.g., Luther et al., 1982; Sawłowicz, 2000). There is a significant difference between oxidation of pyrite and its precursors. For example, FeS , but not pyrite, can be oxidized microbially with NO_3^- as an electron acceptor (Schippers and Jørgensen, 2002).

6 Conclusions and model of *Trichichnus*

Trichichnus is a good example of microbiological and mineralogical collaboration, propounded earlier by Naudet et al. (2003, 2004). Its role in electron transfer is still enigmatic, but several stages can be proposed (Fig. 3). It should also be noted that the relatively large length of *Trichichnus* and its continuation through different redox zones may result in its vertical internal zonation. As suggested earlier, *Trichichnus* may reflect former slime sheaths, where large sulphur bacterial trichomes, like *Thioploca* community, move up and down.

There is growing evidence (e.g., Teske et al., 2009; Prokopenko et al., 2013; Buck et al., 2014 and references therein), that *Thioploca* sheaths house a complex bacterial consortium. In our opinion it is a matter of time before additional microbes will be found associated with *Thioploca* or their post-mortem sheaths.

(1) The earliest stage of the *Trichichnus* formation is related to a sulphuric microbial mat in the dysoxic zone, connecting the anoxic-sulphidic substrate. Long, filamentous bacteria structured like electric cables facilitate electron transport over centimetre distances in marine sediment (Pfeffer et al., 2012; Risgaard-Petersen et al., 2014). The filamentous multicellular,

aerobic bacteria of the family Desulfobulbaceae (cable bacteria), living together with *Thioploca* in the sheath, conduct electrons through internal insulated wires from cells in the sulphide oxidation zone to cells in the oxygen reduction zone Pfeffer et al. (2012). For *Thioploca* itself such behaviour has not been proven yet (see Nielsen and Risgaard-Petersen, 2015 for review). The electric circuit is balanced by charge transport by ions in the surrounding environment (Risgaard-Petersen et al., 2014; Nielsen and Risgaard-Petersen, 2015).

(2) The next stage is related to the iron sulphidization process. Microorganisms can influence both the precipitation of sulphides and their morphology. Bacterial components, e.g., cell walls, facilitate mineralization by sequestration of metallic ions from solution and provide local sites for nucleation and growth (Beveridge and Fyfe, 1985). Iron sulphides (framboids) can form within a matrix of bacteria and biopolymers both during the life of bacterial consortium (see MacLean et al., 2008) and after their death. It should be noted that the process of sheath infilling varies within the system. For example, larger sheaths may be abandoned by trichomes of *Thioploca* faster, compared to smaller ones (Schulz et al., 1996).

The biofilm in a proto-*Trichichnus* capsule seems to be an ideal place for the formation of iron sulphides. Formation of pyrite, probably formerly ferromagnetic greigite, depends on availability of soluble Fe(II) from a surrounding sediment and sulphides (H₂S or polysulphides). Crystals in framboids are generally closely packed, and framboids themselves often too, but when it is not the case, the bacterial pili are believed to connect dispersed conductive minerals (Revil et al., 2010). Cell-to-mineral wires support the thesis that the metallic conductor-like pyrite occurring in sediment might be responsible for the electron flow (see also Nielsen et al., 2010). Growth of a biofilm – developed in the mucus of the large sulphur bacteria sheath – on pyrite can enhance conductivity supporting the biogeobattery idea. The oldest microbial communities colonising sedimentary pyrite grains were found in a ~3.4 billion-year-old sandstone from Australia (Wacey et al., 2011).

(3) The process of electron transfer can continue also after termination of microbial consortia. Decomposition of organic matter inside the channel creates the local reducing microenvironment, which promotes pyrite formation (e.g., Berner, 1980; Raiswell, 1982), even when the surrounding sediment is not fully anoxic. It is tempting to propose that perhaps some iron sulphide forms resulted from a replacement of sulphur globules (stored intra- and extracellularly by chemolithoautotrophic bacteria, e.g., *Thioploca* or by purple and green

sulphur bacteria, Oschmann, 2000), either inside sulphur bacteria cells or after their lysing. Spheroidal crystalline aggregates representing early pyrite and subsequently replaced by iron hydroxides were found in Silurian cyanobacterial filaments (Tomescu et al., 2006). Formation of pyrite framboids via replacement of sulphur grains was also shown experimentally by

5 Křibek (1975).

A halo observed around *Trichichnus* (Fig. 1c and d) results from oxidation of pyrite or former iron monosulphide infilling the trace fossil. The oxidation stage can take place both during the earliest and later stages of diagenesis (the latter is out of the scope of this paper). Re-oxidation processes of pyrite framboids are common in tropical upwelling area, caused by bioturbation and possible contributions from sulphide-oxidizing bacteria (Diaz et al., 2012 and references therein). It would additionally expand, but also complicate, the process of electron transfer in sediments.

Summarizing, we believe that *Trichichnus* is a good example of a potential ancient place where several bioprocesses related to electron transfer in sediment could proceed. A number of evidences for such processes, both in the field and laboratory investigations, has been growing significantly for last few years. Development of new technologies, e.g., multipurpose electrodes which combine reactive measurements with electrical geophysical measurements (Zhang et al., 2010), opens new frontiers in monitoring microbial processes in sediments. We believe that our idea enhances special attention to *Thioploca* endobionts in respect of their electron exchange along the cell-to-mineral wires. Our interpretation shows how this phenomenon could have been widespread in sedimentary environments and through the geological time.

Supplementary information Video captured from an X-ray CT microscanner provides dimensional visualization of the dense *Trichichnus* fabric comparable with the upper part of the bacterial filamentous *Thioploca*-like mat system.

Acknowledgments We are grateful to Sally Sutton (Colorado State University) for her comments and suggestions which improved the manuscript. We are indebted to the Editor Jack Middelburg and two anonymous reviewers for their constructive comments and suggestions, which helped us to improve the manuscript. The use of the MicroCT has been possible due to the project P 23459-B17 granted by the Austrian Science Fund. The work was supported by the Jagiellonian University in Kraków – DS funds project No. K/ZDS/004873

Author Contributions MK conceived the study and contributed to the bacterial part of paper. AU delivered the samples of *Trichichnus* and contributed to the trace fossil part of paper. ZS contributed to the geochemical part of paper. AB delivered the X-ray computed microtomography scanner data. MK, AU and ZS contributed to the model of *Trichichnus*.

References

- Baumgartner, L. K., Reid, R. P., Dupraz, C., Decho, A. W., Buckley, D. H., Spear, J. R., Przekop, K. M. and Visscher, P. T.: Sulphate reducing bacteria in microbial mats: changing paradigms, new discoveries, *Sediment. Geol.*, 185, 131–145, 2006.
- 5 Berner, R. A.: Sedimentary pyrite formation, *Am. J. Sci.*, 268, 1–23, 1970.
- Berner, R. A.: Early diagenesis: a theoretical approach, in: *Princeton Series in Geochemistry*, Princeton University Press, Princeton, 256 pp., 1980.
- Beveridge, T. J. and Fyfe, W. S.: Metal fixation by bacterial cell walls, *Can. J. Earth Sci.*, 22, 1893–1898, 1985.
- 10 Borole, A. P., Reguera, G., Ringeisen, B., Wang, Z. W., Feng, Y. and Kim, B. H.: Electroactive biofilms: Current status and future research needs, *Energ. Environ. Sci.*, 4, 4813–4834, 2011.
- Briggs, D. E. G., Raiswell, R., Bottrell, S. H., Hatfield, D. and Bartels, C.: Controls on the pyritization of exceptionally preserved fossils: an analysis of the Lower Devonian Hunsrück Slate of Germany, *Am. J. Sci.*, 296, 633–663, 1996.
- 15 Buck, K. R., Barry, J. P. and Hallam, S. J.: *Thioploca* spp. sheaths as niches for bacterial and protistan assemblages, *Mar. Ecol.*, 35, 395–400, doi:10.1111/maec.12076, 2014.
- Canfield, D. E. and Raiswell, R.: Pyrite formation and fossil preservation, in: *Taphonomy: Releasing the Data Locked in the Fossil Record*, edited by: Allison, P. A. and Briggs, D. E. G., *Topics in Geobiology*, 9, Plenum, New York, 411–453, 1991.
- 20 Diaz, R., Moreira, M., Mendoza, U., Machado, W., Böttcher, M. E., Santos, H., Belém, A., Capilla, R., Escher, P. and Albuquerque, A. L.: Early diagenesis of sulfur in a tropical upwelling system, Cabo Frio, southeastern Brazil, *Geology*, 40, 879–882, 2012.
- El-Naggar, M. Y., Wanger, G., Leung, K. M., Yuzvinsky, T. D., Southam, G., Yang, J., Lau, W. M., Nealson, K. H. and Gorby, Y. A.: Electrical transport along bacterial nanowires from *Shewanella oneidensis* MR-1, *P. Natl. Acad. Sci. USA*, 107, 18127–18131, 2010.
- 25 Engel, A. S., Lichtenberg, H., Prange, A. and Hormes, J.: Speciation of sulfur from filamentous microbial mats from sulfidic cave springs using X-ray absorption near-edge spectroscopy, *FEMS Microbiol. Lett.*, 269, 54–62, 2007.

- Ferdelman, T. G., Lee, C., Pantoja, S., Harder, J., Bebout, B. M. and Fossing, H.: Sulfate reduction and methanogenesis in a *Thioploca*-dominated sediment off the coast of Chile, *Geochim. Cosmoch. Ac.*, 61, 3065–3079, 1997.
- 5 Fossing, H., Gallardo, V.A., Jørgensen, B.B., Huttel, M., Nielsen, L.P., Schulz, H., Canfield, D.E., Forster, S., Glud, R.N., Gundersen, J.K., Kuver, J., Ramsing, N.B., Teske, A., Thamdrup, B. and Ulloa, O.: Concentration and transport of nitrate by the mat-forming sulphur bacterium *Thioploca*, *Nature*, 374, 713–715, 1995.
- Frey, R. W.: Trace fossils of Fort Hays Limestone Member of Niobrara Chalk (Upper Cretaceous), West-Central Kansas, The University of Kansas, Paleontological Contributions,
10 53, 1–41, 1970.
- Gorby, Y. A., Yanina, S., McLean, J. S., Rosso, K. M., Moyles, D., Dohnalkova, A., Beveridge, T. J., Chang, I. S., Kim, B. H., Kim, K. S., Culley, D. E, Reed, S. B., Romine, M. F., Saffarini, D. A., Hill, E. A., Shi, L., Elias, D. A., Kennedy, D. W., Pinchuk, G., Watanabe, K., Ishii, S., Logan, B., Nealson, K. H. and Fredrickson, J. K.: Electrically conductive
15 bacterial nanowires produced by *Shewanella oneidensis* strain MR-1 and other microorganisms, *P. Natl. Acad. Sci. USA*, 103, 11358–11363, 2006.
- Heutell, M., Forster, S., Klöser, S. and Fossing, H.: Vertical migration in the sediment-dwelling sulphur bacteria *Thioploca* spp. in overcoming diffusion limitations, *Appl. Environ. Microb.*, 62, 1863–1872, 1996.
- 20 Høgslund, S., Nielsen, J. L. and Nielsen, L. P.: Distribution, ecology and molecular identification of *Thioploca* from Danish brackish water sediments, *FEMS Microbiol. Ecol.*, 73, 110–120, 2010.
- Hubbard, C. G., West, L. J., Morris, K., Kulesa, B., Brookshaw, D., Lloyd, J. R. and Shaw, S.: In search of experimental evidence for the biogeobattery, *J. Geophys. Res.*, 116, G04018,
25 doi:10.1029/2011JG001713, 2011.
- Huerta-Diaz, M. A., Delgadillo-Hinojosa, F., Siqueiros-Valencia, A., Valdivieso-Ojeda, J., Reimer, J. J. and Segovia-Zavala, J. A.: Millimeter-scale resolution of trace metal distributions in microbial mats from a hypersaline environment in Baja California, Mexico, *Geobiology*, 10, 531–47, 2012.

- Jiang, L., Cai, C. F., Zhang, Y. D., Mao, S. Y., Sun, Y. G. Li, K. K., Xiang, L., Zhang, C. M.: Lipids of sulfate-reducing bacteria and sulfur-oxidizing bacteria found in the Dongsheng uranium deposit, Chinese Sci. Bull., 57, 1311–1319, 2012.
- Jørgensen, B. B. and Gallardo, V. A.: *Thioploca* spp.: filamentous sulphur bacteria with nitrate vacuoles, FEMS Microbiol. Ecol., 28, 301–313, 1999.
- Jørgensen, B. B. and Nelson, D. C.: Sulphur biogeochemistry – past and present, Geol. S. Am. S., 379, 63–81, 2004.
- Kato, S., Hashimoto, K. and Watanabe, K.: Iron-oxide minerals affect extracellular electron-transfer paths of *Geobacter* spp., Microbes Environment., 28, 141–148, 2013.
- 10 Kato, S., Hashimoto, K. and Watanabe, K.: Microbial interspecies electron transfer via electric currents through conductive minerals, P. Natl. Acad. Sci. USA, 109, 10042–10046, 2012.
- Křibek, B.: The origin of framboidal pyrite as a surface effect of sulphur grains, Miner. Deposita, 10, 389–396, 1975.
- 15 Linde, N. and Revil, A.: Inverting self-potential data for redox potentials of contaminant plumes, Geophys. Res. Lett., 34, L14302, doi:10.1029/2007GL030084, 2007.
- Logan, B. E.: Exoelectrogenic bacteria that power microbial fuel cells, Nat. Rev. Microbiol., 7, 375–381, 2009.
- Love, L. G. and Amstutz, G. C.: Review of microscopic pyrite from the Devonian Chattanooga shale and Rammelsberg Banderz, Fortschr. Mineral., 43, 273–309, 1966.
- 20 Lovley, D. R.: The microbe electric: conversion of organic matter to electricity, Curr. Opin. Biotech., 19, 1–8, 2008.
- Luther III, G. W., Giblin, A., Howarth, R. W., Ryans, R. A.: Pyrite and oxidized iron mineral phases formed from pyrite oxidation in salt marsh and estuarine sediments, Geochim. Cosmochim. Ac., 46, 2665–2669, 1982.
- 25 MacLean, L. C. W., Tyliczszak, T., Gilbert, P. U. P. A., Zhou, D., Pray, T. J., Onstott, T. C. and Southam, G.: A high-resolution chemical and structural study of framboidal pyrite formed within a low-temperature bacterial biofilm, Geobiology, 6, 471–480, 2008.

- Malkin, S. Y., Rao, A. M. F., Seitaj, D., Vasquez-Cardenas, D., Zetsche, E.-M., Hidalgo-Martinez, S., Boschker, H. T. S. and Meysman, F. J. R.: Natural occurrence of microbial sulphur oxidation by long-range electron transport in the seafloor, *The ISME J.*, 1 – 12, 2014.
- McBride, E. F. and Picard, M. D.: Facies implications of *Trichichnus* and *Chondrites* in
5 turbidites and hemipelagites, Marnoso-arenacea Formation (Miocene), Northern Apennines, Italy, *Palaio*, 6, 281–290, 1991.
- Naudet, V. and Revil, A.: A sandbox experiment to investigate bacteria-mediated redox processes on self-potential signals, *Geophys. Res. Lett.*, 32, L11405, doi: 10.1029/2005GL022735, 2005.
- 10 Naudet, V., Revil, A., and Bottero, J. -Y.: Relationship between self-potential (SP) signals and redox conditions in contaminated groundwater, *Geophys. Res. Lett.*, 30, 2091, doi:10.1029/2003GL018096, 2003.
- Naudet, V., Revil, A., Rizzo, E., Bottero, J.-Y. and Bégassat, P.: Groundwater redox conditions and conductivity in a contaminant plume from geoelectrical investigations, *Hydrol. Earth
15 Syst. Sc.*, 8, 8–22, 2004.
- Nielsen, L. P. and Risgaard-Petersen, N.: Rethinking sediment biogeochemistry after the discovery of electric currents, *Annu. Rev. Mar. Sci.*, 7, doi:10.1146/annurev-marine-010814-015708, 21.1–21.18, 2015.
- Nielsen, M. E. and Girguis, P. R.: Evidence for hydrothermal vents as “Biogeobatteries”,
20 American Geophysical Union, Fall Meeting 2010, Abstract #NS33A-02, 2010.
- Nielsen, L. P., Risgaard-Petersen, N., Fossing, H., Christensen, P. B. and Sayama, M.: Electric currents couple spatially separated biogeochemical processes in marine sediment, *Nature*, 463, 1071–1074, 2010.
- Ntarlagiannis, D., Atekwana, E. A., Hill, E. A. and Gorby, Y.: Microbial nanowires: Is the
25 subsurface “hardwired”?, *Geophys. Res. Lett.*, 34, L17305, doi:10.1029/2007GL030426, 2007
- Ohfuji, H. and Rickard, D. T.: Experimental syntheses of framboids — a review, *Earth-Sci. Rev.*, 71, 147–170, 2005.

- Oschmann, W.: Microbes and black shales, in: Microbial Sediments, edited by: Riding, R., and Awramik, S. M., Springer, Heidelberg, 137–148, 2000.
- Passier, H. F., Middelburg, J. J., De Lange, G. J. and Noettcher, M. E.: Modes of sapropel formation in the eastern Mediterranean: some constraints based on pyrite properties, *Mar. Geol.*, 153, 199–219, 1999.
- Pfeffer, C., Larsen, S., Song, J., Dong, M., Besenbacher, F., Meyer, R. L., Kjeldsen, K. U., Schreiber, L., Gorby, Y. A., El-Naggar, M. Y., Leung, K. M., Schramm, A., Risgaard-Petersen, N. and Nielsen, P.: Filamentous bacteria transport electrons over centimetre distances, *Nature*, 491, 218–221, 2012.
- 10 Popa, R., Kinkle, B. K. and Badescu, A.: Pyrite framboids as biomarkers for iron-sulfur systems, *Geomicrobiol. J.*, 21, 193–206, 2004.
- Prokopenko, M. G., Hirst, M. B., De Brabandere, L., Lawrence, D. J., Berelson, W. L., Granger, J., Chang, B. X., Dawson, S., Crane, III E. J., Chong, L., Thamdrup, B., Townsend-Small and A., Sigman, D. L.: Nitrogen losses in anoxic marine sediments driven by
- 15 *Thioploca*–anammox bacterial consortia, *Nature*, 500, 194–198, 2013.
- Raiswell, R.: Pyrite texture, isotopic composition, and the availability of iron, *Am. J. Sci.*, 282, 1244–1263, 1982.
- Reguera, G., McCarthy, K. D., Mehta, T., Nicoll, J. S., Tuominen, M. T. and Lovley, D. R.: Extracellular electron transfer via microbial nanowires, *Nature*, 435, 1098–1101, 2005.
- 20 Revil, C. A., Mendonça, E. A., Atekwana, B., Kulesa, S. S., Hubbard, K. J. and Bohlen, K. J.: Understanding biogeobatteries: where geophysics meets microbiology, *J. Geophys. Res.-Biogeo.*, 115, G00G02, doi:10.1029/2009JG001065, 2010.
- Rickard, D. and Luther III, G. W.: Chemistry of iron sulphides, *Chem. Rev.*, 107, 514–562, 2007.
- 25 Rimstidt, J. D. and Vaughan, D. J.: Pyrite oxidation: a state-of-the-art assessment of the reaction mechanism, *Geochim. Cosmoch. Ac.*, 67, 873–880, 2003.
- Risgaard-Petersen, N., Revil, A., Meister, P. and Nielsen, L. P.: Sulphur, iron-, and calcium cycling associated with natural electric currents running through marine sediment, *Geochim. Cosmochim. Ac.*, 92, 1–13, 2012.

Risgaard-Petersen, N., Damgaard, L. R., Revil, A. and Nielsen, L. P.: Mapping electron sources and sinks in a marine biogeobattery, *J. Geophys. Res.-Biogeo.*, 119, 1475–1486, doi:10.1002/2014JG002673, 2014.

Romero-Wetzel, M. B.: Sipunculans as inhabitants of very deep, narrow burrows in deep-sea
5 sediments, *Mar. Biol.*, 96, 87–91, 1987.

Salman, V., Amann, R., Girth, A.-C., Polerecky, L., Bailey, J. V., Høglund, S., Jessen, G., Pantoja, S. and Schulz-Vogt, H. N.: A single-cell sequencing approach to the classification of large, vacuolated sulfur bacteria, *Syst. Appl. Microbiol.*, 34, 243–259, doi:10.1016/j.syapm.2011.02.001, 2011.

10 Sato, M. and Mooney, H. M.: The electromechanical mechanism of sulphide self-potentials, *Geophysics*, 25, 226–249, 1960.

Sawłowicz, Z.: Framboids: from their origin to application, *Prace Mineralogiczne*, Polish Academy of Science, Div. Kraków, 88, 1–80, 2000.

Schauer, R., Risgaard-Petersen, N., Kjeldsen, K. U., Tataru Bjerg, J. J., Jørgensen, B. B.,

15 Schramm, A. and Nielsen, L. P.: Succession of cable bacteria and electric currents in marine sediment, *The ISME J.*, 8, 1314–1322, doi:10.1038/ismej.2013.239, 2014.

Schippers, A. and Jørgensen, B. B.: Biogeochemistry of pyrite and iron sulfide oxidation in marine sediments, *Geochim. Cosmochim. Ac.*, 66, 85–92, 2002.

Schoonen, M. A. A.: Mechanisms of sedimentary pyrite formation, *Geol. S. Am. S.*, 379, 117–
20 134, 2004.

Schulz, H. N., Jørgensen, B. B., Fossing, H. A. and Ramsing, N. B.: Community structure of filamentous, sheath-building sulphur bacteria, *Thioploca* spp., off the coast of Chile, *Appl. Environ. Microb.*, 62, 1855–1862, 1996.

Schulz, H. N., Strotmann B., Gallardo, V. A. and Jørgensen, B. B.: Population study of the
25 filamentous sulfur bacteria *Thioploca* spp. off the Bay of Concepcion, Chile, *Marine Ecol. Prog. Ser.*, 200, 117–126, 2000.

Shelobolina, E. S., Gaw Van Praagh, C. and Lovley, D.R.: Use of ferric and ferrous iron containing minerals for respiration by *Desulfitobacterium frappieri*, *Geomicrobiol. J.*, 20, 143–156, 2003.

Stachacz, M.: Ichnology of Czarna Shale Formation (Cambrian, Holy Cross Mountain, Poland), *Ann. Soc. Geol. Pol.*, 82, 105–120, 2012.

Teske, A. and Nelson, D. C.: The genera *Beggiatoa* and *Thioploca*, *Prokaryotes*, 6, 784–810, 2006.

- 5 Teske, A., Jørgensen, B. B. and Gallardo, V. A.: Filamentous bacteria inhabiting the sheaths of marine *Thioploca* spp. on the Chilean continental shelf, *FEMS Microbiol. Ecol.*, 68, 164–172, 2009.

Teske, A., Ramsing, N. B., Küver, J., Fossing, H.: Phylogeny of *Thioploca* and related filamentous sulfide-oxidizing bacteria, *Syst. Appl. Microbiol.* 18, 517–526, 1995.

- 10 Thomson, J. and Wilson, T. R. S.: Burrow-like structures at depth in a Cape Basin red clay core, *Deep-Sea Res.*, 27A, 197–202, 1980.

Tomescu, A. M. F., Rothwell, G. W. and Honegger, R.: Cyanobacterial macrophytes in an Early Silurian (Llandovery) continental biota: Passage Creek, lower Massanutten Sandstone, Virginia, USA, *Lethaia*, 39, 329–338, 2006.

- 15 Uchman, A.: Taxonomy and palaeoecology of flysch trace fossils: the Marnoso-arenacea Formation and associated facies (Miocene, Northern Apennines, Italy), *Beringeria*, 15, 3–115, 1995.

Uchman, A.: Ichnology of the Rhenodanubian Flysch (Lower Cretaceous-Eocene) in Austria and Germany, *Beringeria*, 25, 65–171, 1999.

- 20 Wacey, D., Saunders, M., Brasier, M. D. and Kilburn, M. R.: Earliest microbially mediated pyrite oxidation in ~3.4 billion-year-old sediments, *Earth Planet. Sc. Lett.*, 301, 393–402, 2011.

Weaver, P. P. E. and Schultheiss, P. J.: Vertical open burrows in deep-sea sediments 2 m in length, *Nature*, 301, 329–331, 1983.

- 25 Weber, K. A., Achenbach, L. A. and Coates, J. D.: Microorganisms pumping iron: Anaerobic microbial iron oxidation and reduction, *Nat. Rev. Microbiol.*, 4, 752–764, 2006.

Wetzel, A.: Biogenic structures in modern slope to deep-sea sediments in the Sulu Sea Basin (Philippines), *Palaeogeogr. Palaeoclimatol.*, 42, 285–304, 1983.

Widdel, F. and Hansen, T. A.: The prokaryotes, in: Handbook on the Biology of Bacteria: Ecophysiology, Isolation, Identification, Applications, vol. 1, edited by: Balows, A., Truper, H. G., Dworkin, M., Harder, W. and Schleifer, K. H., New York, Springer, 582–624, 1992.

Wielinga, B., Mizuba, M. M., Hansel, C. M. and Fendorf, S.: Iron promoted reduction of
5 chromate by dissimilatory iron-reducing bacteria, Environ. Sci. Technol.. 35. 522–527, 2001.

Wilkin, R. T. and Barnes, H. L.: Formation processes of framboidal pyrite, Geochim. Cosmoch. Ac., 61, 323–339, 1997.

Zhang, C., Ntarlagiannis, D., Slater, L., and Doherty, R.: Monitoring microbial sulfate
reduction in porous media using multi-purpose electrodes. Jour. Geophys. Res.,
10 Biogeosciences, 115, G00G09, doi:10.1029/2009JG001157, 2010.

Scanner	SkyScan 1173
Camera Pixel Size	50.0 μm
Source Voltage	130 kV
Source Current	61 μA
Camera binning	1 x 1
Filter	Al 1mm
Exposure	650 ms
Rotation step	0.15°
Frame averaging	30
360° Rotation	On
Scan Duration	14h 22m
Pixel Size	9.97646 μm

Tab. 1. Scanner setting data used for X-ray computed microtomography (microCT).

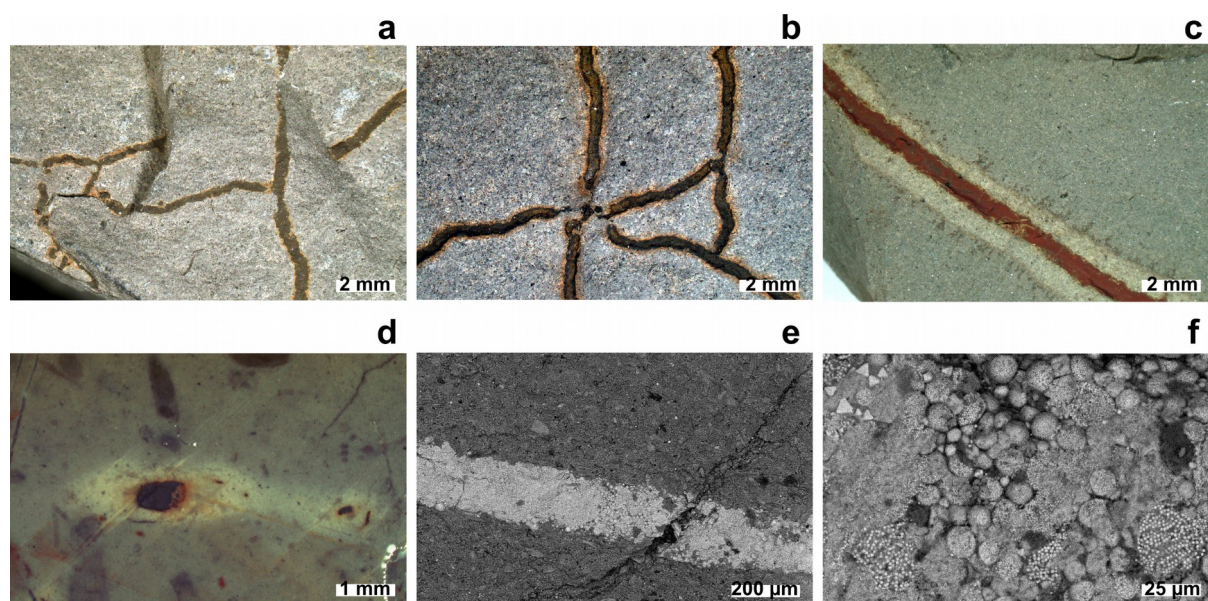


Fig. 1. **Macro- and microimages of *Trichichnus* in the rock fractures and slabs** (a–c - Albian turbiditic marly mudstones, Kozy, Polish Carpathians; d – Valanginian–Hauterivian pelagic marlstones. Dolina Kościeliska valley, Tatra Mountains, Poland, e, f – Eocene silty shales, Zbludza, Polish Carpathians). a, b, subhorizontal network of *Trichichnus*. c, d, halo (diffusion zone of Fe (oxy)hydroxides) around horizontal (c) and vertical (d) *Trichichnus*. e, infilling of a fragment of *Trichichnus* with abundant pyrite framboids and Fe (oxy)hydroxides (SEM BSE). f, magnification of image e. Specimen numbers: a – INGUI147P70, b – INGUI147P71, c – INGUI147P72, d – INGUI155P20, e, f – INGUI144P159.

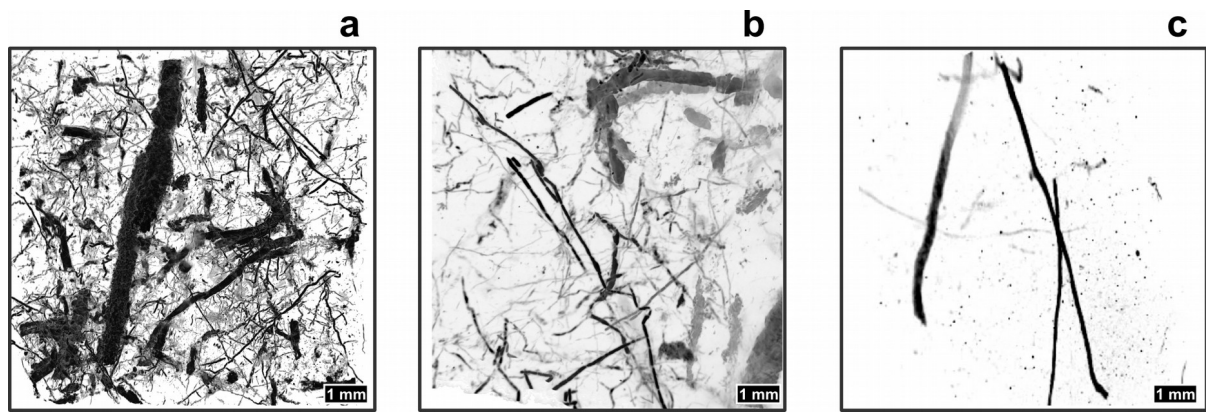


Fig. 2. X-ray computed microtomography scanner images of different parts of *Trichichnus* spatial complex, Oligocene, Skole Nappe Polish Flysch Carpathians. **a**, dense *Trichichnus* fabric, similar to the upper part of the *Thioploca* mat system. **b**, *Trichichnus* fabric comparable with the middle part of the *Thioploca* mat system. **c**, *Trichichnus* fabric depicting the lower part of the *Thioploca* mat system.

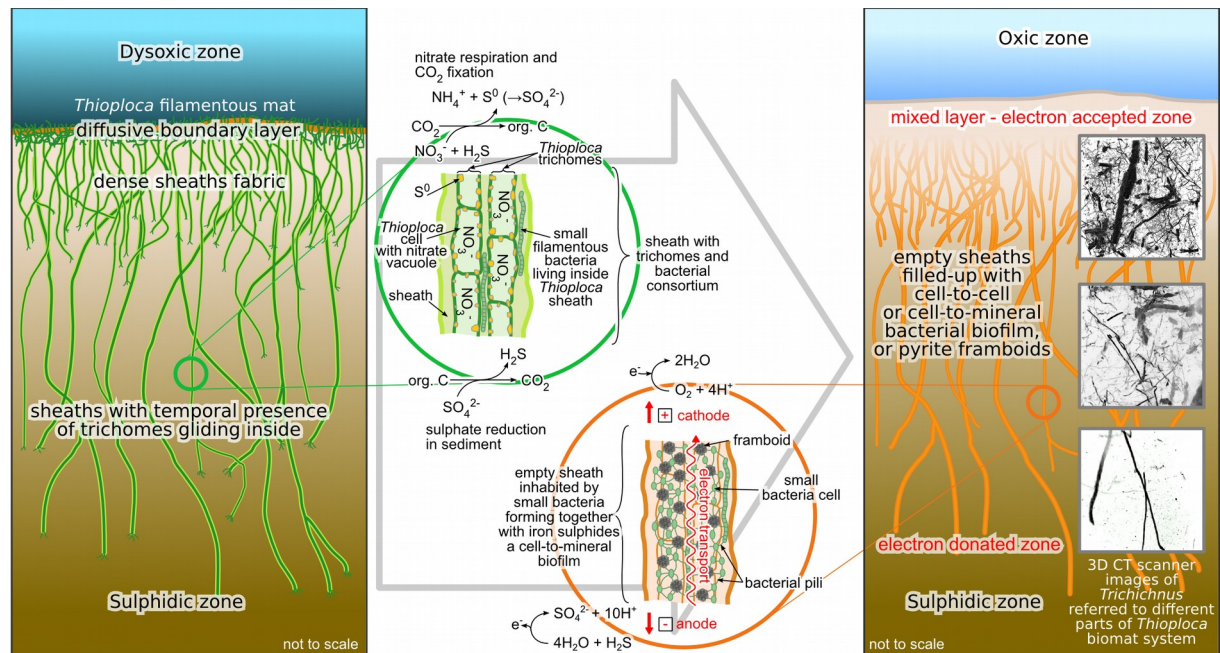


Fig. 3. **Model of the origin of *Trichichnus*.** The ecology of *Thioploca* mat system and their sulphide oxidation chemistry (**left**). The *Thioploca* sheaths system below the diffusive boundary layer forms a construction which may be inhabited by small bacteria making the conductive nanowire-pyrite framboids biofilm. This triggers the electric self-potential between the sulphidic zone and mixed layer, thus, the electron flow (**right**). The different part of the *Trichichnus* compared with the different part of the former *Thioploca* mat system are shown for the comparison (**right**). *Thioploca* spp. nitrogen, carbon and sulphur metabolism reactions taken from Teske and Nelson (2006); half-reactions on *Trichichnus* adapted from Nielsen and Risgaard-Petersen, 2015.