

This discussion paper is/has been under review for the journal Biogeosciences (BG).
Please refer to the corresponding final paper in BG if available.

Variation in photosynthetic and nonphotosynthetic vegetation along edaphic and compositional gradients in northwestern Amazonia

M. A. Higgins¹, G. P. Asner¹, E. Perez², N. Elespuru², and A. Alonso³

¹Department of Global Ecology, Carnegie Institution for Science, Stanford, CA, 94305, USA

²Facultad de Ciencias Biológicas, Universidad Nacional de la Amazonía Peruana, Iquitos, Peru

³Center for Conservation Education and Sustainability, Smithsonian Conservation Biology Institute, National Zoological Park, Washington, DC 20012-7012, USA

Received: 30 January 2014 – Accepted: 13 February 2014 – Published: 3 March 2014

Correspondence to: G. P. Asner (gpa@stanford.edu)

Published by Copernicus Publications on behalf of the European Geosciences Union.

Title Page

Abstract

Introduction

Conclusions

References

Tables

Figures

⏪

⏩

◀

▶

Back

Close

Full Screen / Esc

Printer-friendly Version

Interactive Discussion

Abstract

Tropical forests vary substantially in aboveground properties such as canopy height, canopy structure, and plant species composition, corresponding to underlying variations in soils and geology. Forest properties are often difficult to detect and map in the field, however, due to the remoteness and inaccessibility of these forests. Spectral mixture analysis of Landsat imagery allows mapping of photosynthetic and nonphotosynthetic vegetation quantities (PV and NPV), corresponding to biophysical properties such as canopy openness, forest productivity, and disturbance. Spectral unmixing has been used for applications ranging from deforestation monitoring to identifying burn scars from past fires, but little is known about variations in PV and NPV in intact rainforest. Here we use spectral unmixing of Landsat imagery to map PV and NPV in northern Amazonia, and to test their relationship to soils and plant species composition. To do this we sampled 117 sites crossing a geological boundary in northwestern Amazonia for soil cation concentrations and plant species composition. We then used the Carnegie Landsat Analysis System to map PV and NPV for these sites from multiple dates of Landsat imagery. We found that soil cation concentrations and plant species composition consistently explain a majority of the variation in remotely sensed PV and NPV values. After combining PV and NPV into a single variable (PV-NPV), we determined that the influence of soil properties on canopy properties was inseparable from the influence of plant species composition. In all cases, patterns in PV and NPV corresponded to underlying geological patterns. Our findings suggest that geology and soils regulate canopy PV and NPV values in intact tropical forest, possibly through changes in plant species composition.

1 Introduction

Tropical forests vary greatly in aboveground properties such as canopy height, canopy structure, and plant species composition, due to underlying variations in soils and geo-

BGD

11, 3535–3557, 2014

Fractional Canopy Cover in Northwestern Amazonia

M. A. Higgins et al.

Title Page

Abstract

Introduction

Conclusions

References

Tables

Figures

⏪

⏩

◀

▶

Back

Close

Full Screen / Esc

Printer-friendly Version

Interactive Discussion



logical formations. Changes in these aboveground properties have been observed over thousands of kilometers (Malhi et al., 2004; ter Steege et al., 2006) and distances as short as 2–3 km (Higgins et al., 2011; Salovaara et al., 2005; Tuomisto et al., 2003b). Due to the inaccessibility of these forests and challenges of sampling in these environments, however, field data on forest properties is often difficult to obtain. Satellite imagery offers a unique opportunity to explore tropical forests for broad-scale variations in aboveground properties that might otherwise be impossible to detect, and to compare these to underlying geological or edaphic properties.

Landsat is the most widely available and commonly used source of satellite imagery for tropical forests, and reflectance in individual Landsat bands is known to correspond to variations in soils and plant species composition (Higgins et al., 2012; Salovaara et al., 2005; Tuomisto et al., 2003a). Analysis of Landsat data can also be used to give insight into the biophysical properties of tropical forests. Individual pixels in Landsat imagery typically consist of a mix of substances including live or dead vegetation, bare ground, or human development. Using spectral mixture analysis (SMA), mixed spectra for individual pixels can be unmixed into their component spectra, also known as endmembers (Somers et al., 2011). Typical endmembers for forested ecosystems are photosynthetic vegetation (PV), nonphotosynthetic vegetation (NPV), and bare substrate (Asner et al., 2005b). The products of this process are maps of percentages of PV, NPV, or bare substrate across full Landsat images.

Photosynthetic vegetation endmembers are typically defined from above-ground measurements of intact canopy, collected aurally or from high spatial and spectral resolution orbital sensors such as Earth Observing-1 Hyperion (Asner et al., 2005a). High PV values thus translate into continuous green, leafy canopy with little exposed woody material, litter, or bare ground. Nonphotosynthetic vegetation and bare substrate endmembers are usually calculated using ground-based spectroscopic measurement. Nonphotosynthetic endmembers are defined from ground litter, exposed tree trunk and branches, and deforestation residue; and bare substrate endmembers are constructed from a range of soil types with varying water content and organic matter. High NPV

BGD

11, 3535–3557, 2014

Fractional Canopy Cover in Northwestern Amazonia

M. A. Higgins et al.

[Title Page](#)

[Abstract](#)

[Introduction](#)

[Conclusions](#)

[References](#)

[Tables](#)

[Figures](#)



[Back](#)

[Close](#)

[Full Screen / Esc](#)

[Printer-friendly Version](#)

[Interactive Discussion](#)



thus translates into forests with open canopies and greater amounts of exposed woody or senescent material; and high bare substrate values translate into forest removal, exposed soils and rock, or human habitation.

Spectral unmixing has provided valuable insight into the condition of tropical forest vegetation and changes in tropical forests through time. Fractional cover maps of PV, NPV, and bare substrate have been used to identify patterns of selective logging across tropical forests (Asner et al., 2005a; Oliveira et al., 2007; Souza et al., 2005; Allnutt et al., 2013), and to detect subcanopy burn scars (Alencar et al., 2011). In temperate ecosystems, PV values have been found to be superior to the normalized differential vegetation index (NDVI) in remotely-sensed calculations of vegetation productivity (Huang et al., 2012). Beyond the tropics, SMA has been used extensively on both global and regional scales for decomposing images into a variety of constituent surface covers (Somers et al., 2011).

Despite the use of fractional cover to detect human disturbance and fire in tropical forests, little is known about natural variations of PV and NPV in intact forests. Recent studies have found broad-scale patterns in plant species composition, soil properties, and underlying geology in western Amazonian forests (Higgins et al., 2011; Tuomisto et al., 1995, 2003b; Salovaara et al., 2005). This raises the possibility that these geological, edaphic, and compositional drivers may translate into changes in the abundance of photosynthetic and nonphotosynthetic vegetation displayed by the canopy, and that this might be detected by spectral unmixing. If true, this would suggest that there are structural and functional differences between these forest types.

Here we tested whether variations in PV and NPV in intact forests in northwestern Amazonia are sensitive to changes in soils and plant species composition. We concentrated our study on two regions of northwestern Amazonia that are known to contain boundaries between two widespread geological formations, the Pebas and Nauta Formations. These formations differ substantially in plant species composition and soil properties (Higgins et al., 2011, 2012), making them ideally suited for this purpose.

BGD

11, 3535–3557, 2014

Fractional Canopy Cover in Northwestern Amazonia

M. A. Higgins et al.

[Title Page](#)

[Abstract](#)

[Introduction](#)

[Conclusions](#)

[References](#)

[Tables](#)

[Figures](#)

[⏪](#)

[⏩](#)

[◀](#)

[▶](#)

[Back](#)

[Close](#)

[Full Screen / Esc](#)

[Printer-friendly Version](#)

[Interactive Discussion](#)

Moreover, we have previously established over 100 plant inventories and soil samples for these study areas, distributed among the two formations.

We used the Carnegie Landsat Analysis System (CLAS) to quantify the fractional cover of PV and NPV throughout both study regions (Asner et al., 2005b), and calculated mean PV and NPV values for all inventories. We then determined the relationship between PV and NPV values for these transects, and either soil fertility or plant species composition. We also partitioned the variation in PV and NPV between soils and species composition, in order to assess which was more important in regulating changes in fractional PV and NPV cover.

By comparing these field data with PV and NPV values calculated from Landsat imagery, we determined the degree to which quantities of photosynthetic and nonphotosynthetic vegetation are controlled by variations in plant species composition, soils properties, or both in combination. To our knowledge, this is the one of the first times that PV and NPV data have been related to patterns in plant species composition or soil properties in intact tropical forests (see also Carvalho et al., 2013).

2 Materials and methods

2.1 Study regions

We conducted our fieldwork in two study regions, Pastaza-Tigre and Curaray, each of which were centered on boundaries between the Pebas and Nauta formations (Fig. 1a–c). The Pebas Formation consists of relatively cation-rich sediments deposited during low-energy semi-marine conditions of the mid to late Miocene and recently exposed by recent river incision (Hoorn et al., 2010; Räsänen et al., 1995). The Nauta Formation consists of relatively cation-poor sediments deposited by high-energy fluvial conditions during the Plio-Pliocene (Rebata et al., 2006). These two geological formations are widespread across northwestern Amazonia and account for the majority of land surface in northeastern Amazonian Perú (INGEMMET, 2000).

BGD

11, 3535–3557, 2014

Fractional Canopy Cover in Northwestern Amazonia

M. A. Higgins et al.

Title Page

Abstract

Introduction

Conclusions

References

Tables

Figures

⏪

⏩

◀

▶

Back

Close

Full Screen / Esc

Printer-friendly Version

Interactive Discussion

The Pastaza-Tigre study region was located between the Pastaza and Tigre rivers (Fig. 1a and b), and was accessed by a service road for the Lot 1AB oil pipeline. The Curaray study area was located to the southwest of the Curaray river (Fig. 1a and c), and was accessed by helicopter during seismic oil exploration. We established a total of 117 linear transects at these study areas, consisting of 65 transects at Pastaza-Tigre and 52 at Curaray, along which we sampled plants and soils. We restricted our sampling to non-inundated (i.e. terra firme) primary rainforest.

2.2 PV and NPV data

We used the USGS GLOVIS service (<http://glovis.usgs.gov/>) to identify and download available cloud and haze-free Landsat images for our study areas, totaling five images for Pastaza-Tigre and three for Curaray (Table 1). We then used the Carnegie Landsat Analysis System (CLAS) to calculate the proportion of each Landsat pixel occupied by PV or NPV for each of the eight Landsat images (Table 1; Asner et al., 2005b). The products of this process were PV and NPV images of the same size and spatial resolution as the original Landsat images, in which pixel values gave the estimated percentage cover of photosynthetic or nonphotosynthetic vegetation. In total, we generated PV and NPV images for five dates for the Pastaza-Tigre study area, and three dates for Curaray (Table 1).

We used 250 m buffer areas for each transect (Tuomisto et al., 2003a) to compute PV and NPV statistics for each transect, and repeated this for all image dates throughout both study regions. Before calculating values for Pastaza-Tigre transects, we edited the buffer areas to remove areas that overlapped with road features. We also omitted, for single image dates, PV and NPV values for any transects that contained clouds or cloud shadows (Table 1). On average, buffer areas for both Pastaza-Tigre and Curaray contained 550 pixels of PV and NPV data, and all analyses were conducted with ArcGIS v. 10 (ESRI Inc., Redlands, CA, USA).

BGD

11, 3535–3557, 2014

Fractional Canopy Cover in Northwestern Amazonia

M. A. Higgins et al.

Title Page

Abstract

Introduction

Conclusions

References

Tables

Figures

⏪

⏩

◀

▶

Back

Close

Full Screen / Esc

Printer-friendly Version

Interactive Discussion

2.3 Plant and soil data

Tree species inventory in Amazonian forests is notoriously difficult due to large numbers of species, tall and difficult-to-identify individuals, and poorly-known taxonomy (Higgins and Ruokolainen, 2004). Establishing a tree inventory network that could sample the full geological and edaphic ranges of our study areas was thus not feasible, and we focused our plant inventories on a single plant group, the pteridophytes (ferns and lycophytes). Pteridophytes are known to capture a majority of the patterns observed in tree inventories at sites across the Neotropics (Ruokolainen et al., 1997, 2007; Tuomisto et al., 1995; Jones et al., 2013), and due to their ease of sampling and identification, this method allows an average of one inventory a day. As a result, this group is a common tool for the study of biodiversity patterns in western Amazonia (Higgins et al., 2011; Tuomisto et al., 1995, 2003c), and has been used in multiple studies to relate remotely-sensed imagery to patterns in plant composition in Amazonian forests (Higgins et al., 2012; Salovaara et al., 2005; Tuomisto et al., 2003a, b).

Our field data consisted of 117 linear transects of 5 m × 500 m, along which we had previously collected presence-absence data for pteridophytes (Higgins et al., 2011). Only individuals with at least one leaf (for ferns) or stem (for lycophytes) longer than 10 cm were recorded, and epiphytic and climbing individuals were recorded only if they had green leaves ≤ 2 m above ground. Permits for collection and export of plant specimens for identification were obtained from the Peruvian National Institute of Natural Resources (INRENA), and we deposited vouchers for all species at herbaria in Peru (AMAZ and USM) and Finland (TUR; Thiers, continuously updated, 2014).

In addition, we collected soil samples at 50 m, 250 m, and 450 m along each transect. Each of these three soil samples consisted of five subsamples of the top 10 cm of mineral soil, collected in an area of 4 m × 4 m (Higgins et al., 2011). These five subsamples were combined in the field into a single sample, and equal dry weights of the three samples were combined into one sample per transect for analysis. Soil samples were analyzed at MMT Agrifood (Jokioinen, Finland) for pH; loss on ignition (a measure of

BGD

11, 3535–3557, 2014

Fractional Canopy Cover in Northwestern Amazonia

M. A. Higgins et al.

Title Page

Abstract

Introduction

Conclusions

References

Tables

Figures

⏪

⏩

◀

▶

Back

Close

Full Screen / Esc

Printer-friendly Version

Interactive Discussion



organic matter content); P concentration (Bray method); and extractable Al, Ca, K, Mg and Na (in 1 M ammonium acetate). In addition, percentages of sand, silt and clay were determined at MTT Agrifood (Curaray samples; sieving and pipette methods) and the University of Turku Department of Geology (Turku, Finland; laser diffraction).

5 We used non-metric multidimensional scaling (NMDS) to reduce our floristic data to a single variable for comparison to soil properties, PV, and NPV values (Higgins et al., 2012). We calculated one-dimensional NMDS solutions for our plant inventories using the one-complement of the Jaccard index as a distance measure. For this analysis we ran a maximum of 400 iterations from 40 random starting configurations, and applied
10 an instability criterion of 10^5 . All NMDS calculations were performed with PC-ORD v. 4.41.

2.4 Regression analyses using CLAS data

We used simple linear regressions to calculate the percent of variation in PV and NPV explained by soils and floristic composition for all images in both study regions (Table 1). For these analyses, floristic composition was represented by a single NMDS
15 axis, and cation concentration was represented by the log-transformed sum of four cations (Ca, Mg, Na, and K; abbreviated as LSC).

In addition, due to differences in illumination between image dates, we observed consistently higher PV and NPV values for some dates vs. others. To normalize for these between-date variations, and to calculate a single value for comparisons to soil and plant inventory data, we used the difference between PV and NPV (PV – NPV; Asner and Warner, 2003). For each Landsat image date, we subtracted the mean NPV of each transect from its mean PV. We then averaged the PV-NPV values for each transect across all image dates, resulting in a single PV-NPV value for each transect.

25 We then used linear or multiple regressions to calculate the percent of the variation in these PV-NPV values that was explained by NMDS values, LSC values, or the two together (Table 2). These calculations were performed separately for both study areas

BGD

11, 3535–3557, 2014

Fractional Canopy Cover in Northwestern Amazonia

M. A. Higgins et al.

Title Page

Abstract

Introduction

Conclusions

References

Tables

Figures

⏪

⏩

◀

▶

Back

Close

Full Screen / Esc

Printer-friendly Version

Interactive Discussion

and we excluded transects which contained clouds or cloud shadows (as described above).

We then used these results to partition the variation in PV-NPV at both study areas into three components: variation explained uniquely by variation in LSC values; variation explained uniquely by variation in NMDS values; or variation explained equally by both. We calculated the percentage of variation in PV-NPV explained uniquely by LSC or NMDS values as “C – A” or “C – B”, respectively, where “A” represented the percent variation in PV-NPV explained by NMDS values alone (simple linear regression); “B” represented the variation explained by LSC values alone; and “C” represented the variation explained by the combination of LSC and NMDS values (multiple regression). We calculated the percent of variation that was explained equally by LSC and NMDS values as the percentage of variation explained by the combination of LSC and NMDS minus the percentage explained uniquely by both (i.e. “C – (C – A) – (C – B)” simplifying to “A + B – C”).

3 Results

3.1 Soil properties and plant species composition

As previously reported (Higgins et al., 2011), the geological patterns in our study area corresponded to abrupt changes in soil cation concentrations. Cation concentrations on the Pebas Formation were 10 times greater than on the Nauta Formation at the Pastaza-Tigre and Curaray region, and 7 times greater at the Curaray region (Fig. 1b and c; sum of concentrations of Ca, Mg, Na, and K). These changes in soils also corresponded to clear changes in plant species composition (Fig. 1b and c). Single-axis NMDS ordinations of our pteridophyte data explained 80% and 90% of the floristic pattern in the original datasets at the Curaray and Pastaza-Tigre, respectively, indicating strong compositional patterns in these data. In total, our inventories included 147 and 127 species at Pastaza-Tigre and Curaray, with a mean of 34 and 30 species per

Title Page

Abstract

Introduction

Conclusions

References

Tables

Figures



Back

Close

Full Screen / Esc

Printer-friendly Version

Interactive Discussion



transect. Linear models using the log-transformed sum of four cations (Ca, Mg, Na, and K) explained 90 % and 71 % of the variation in NMDS ordination scores for sites at Pastaza-Tigre and Curaray, respectively ($P < 0.001$).

3.2 Photosynthetic and nonphotosynthetic vegetation

5 These patterns in geology, soils, and floristic composition were translated into clear patterns of PV and NPV. Forests growing on the Pebas Formation had higher PV and lower NPV values than forests growing on the Nauta Formation (Fig. 1d–g). These differences in fractional cover were strongly explained by differences in cation concentrations between the two geological formations (Fig. 2c, d, g and h), such that increased cation concentrations resulted in increased PV and decreased NPV. On average, the log-transformed sum of four cations (Ca, Mg, Na, and K) explained 67 % and 60 % variation in PV and NPV values at Pastaza-Tigre, and 42 % and 65 % at Curaray ($P < 0.001$ for all regressions; Table 1).

15 These differences in PV and NPV were equally well-explained by variations in plant species composition (Fig. 2a, b, e and f), such that increased NMDS values – corresponding to the transition from the cation-poor Nauta Formation to the richer Pebas Formation – resulted in increased PV and decreased NPV ($P < 0.001$ for all regressions; Table 1). On average, NMDS scores explained 68 % and 59 % variation in PV and NPV values at Pastaza-Tigre, and 41 % and 61 % at Curaray. Furthermore, the effects of soil fertility and floristic composition on PV or NPV, as indicated by the slope of the regressions, were identical despite date-to-date variations due to illumination or seasonal effects (Fig. 2a–h). This indicated a strong and consistent relationship between soil fertility, floristic composition, and endmember abundances.

25 To disentangle the contributions of soil fertility and species composition to PV and NPV results, we combined PV and NPV into a single metric (PV-NPV), and partitioned the variation in this metric between floristic composition and soil cation concentrations. In combination, soil cation concentrations and NMDS values explained a total of 72 % and 67 % of the variation in PV-NPV values at Pastaza-Tigre and Curaray, respectively

BGD

11, 3535–3557, 2014

Fractional Canopy Cover in Northwestern Amazonia

M. A. Higgins et al.

[Title Page](#)

[Abstract](#)

[Introduction](#)

[Conclusions](#)

[References](#)

[Tables](#)

[Figures](#)

[⏪](#)

[⏩](#)

[◀](#)

[▶](#)

[Back](#)

[Close](#)

[Full Screen / Esc](#)

[Printer-friendly Version](#)

[Interactive Discussion](#)



Fractional Canopy Cover in Northwestern Amazonia

M. A. Higgins et al.

[Title Page](#)

[Abstract](#)

[Introduction](#)

[Conclusions](#)

[References](#)

[Tables](#)

[Figures](#)

[⏪](#)

[⏩](#)

[◀](#)

[▶](#)

[Back](#)

[Close](#)

[Full Screen / Esc](#)

[Printer-friendly Version](#)

[Interactive Discussion](#)

(Fig. 3, Table 2). Of this, only 3 % and 7 % was explained uniquely by soils, and only 1 % and 4 % by floristic composition. The large majority (68 % and 56 %) of variation in PV-NPV values was explained equally by variation in either soils or floristic composition. This finding suggests that changes in endmember abundance due to cation concentrations were inseparable from changes due to floristic composition (Fig. 3, Table 2). This in turn suggests that variations in PV and NPV due to soil fertility may be mediated by changes in plant species composition.

4 Discussion

Our analysis of Landsat data for northwestern Amazonia revealed widespread and consistent patterns in photosynthetic and nonphotosynthetic vegetation, corresponding closely to patterns in geology, soils, and plant species composition. Using data from 117 field sites, we found that soil properties and plant species composition explained up to 68 % of variation in PV and NPV in Amazonian forests, and that this increased to 72 % if PV and NPV were combined into a single metric. In addition, the contributions of soil and plant species composition to variations in PV and NPV were inseparable, suggesting that the effect of soils on PV and NPV values may be mediated by variations in species composition. These findings suggest that geology, soils, and plant species composition may produce structural and functional patterns in Amazonian forests. They also suggest that PV and NPV, in addition to their previously-demonstrated uses in identifying forest disturbance, might also be used to identify biophysical patterns in Amazonian forests (Alencar et al., 2011; Asner et al., 2005a).

Our findings raise the question of the cause of these patterns and their biological significance. At both study areas, and using eight Landsat image dates, we observed increased NPV and reduced PV when moving from the richer soils of the Pebas Formation to the poorer soils of the Nauta Formation. We believe this may be explained by two factors: natural thinning of the forest canopy when moving from rich to poor soils, and increased allocation to leaf thickness and defensive compounds. Reduced allocation

to leaf area would result in lower PV, and in increased NPV due to increased exposure of woody material such as tree branches or boles. In addition, increased allocation to leaf defensive compounds or thickness might also increase non-photosynthetic chemical expression in foliage, including structural compounds such as lignin and defensive compounds such as tannins, resulting in increased NPV. These compounds could in turn obscure photosynthetic compounds, resulting in reduced PV.

This scenario is consistent with plot-level studies in Amazonia, which show a tradeoff between allocation to plant defensive compounds at low soil cation concentrations; and allocation to light acquisition (e.g. stem and leaf growth) at high soil cation concentrations (Fine et al., 2004, 2006; Asner and Martin 2011). At low cation concentrations plants invest more heavily in defending scarce nutrients, while at high concentrations plants invest more heavily in light acquisition and photosynthesis. Our findings suggest that these tradeoffs occur at broad scales: from assemblages of species with higher allocations to photosynthetic material on rich-soil formations; to assemblages of species with higher allocations to nonphotosynthetic material (e.g. defensive compounds and thicker leaves) on poor-soil geological formations.

There are two alternative explanations, however, for the observed regional-scale variations in canopy PV and NPV. First, it is possible that gap formation rates on these two geological formations differ such that a higher frequency of gaps on the Nauta Formation is translated into higher NPV and lower PV values on this formation. Recent high-resolution LiDAR-studies of canopy structure at these sites, however, indicate that gaps are more frequent on the richer soils of the Pebas Formation (Higgins et al., 2014), suggesting that gap dynamics do not affect PV and NPV values in these forests.

Second, it is possible that terrain differences between the two geological formations are responsible for the observed differences in fractional cover, such that increased slope on one formation causes greater inter-crown shadowing and thus higher NPV and lower PV. Slopes are indeed greater on the Nauta Formation in the Pastaza-Tigre study area, as visible in both SRTM and LiDAR data (Higgins et al., 2011, 2014). However, this relationship is reversed at the Curaray study area, where slopes are greater

BGD

11, 3535–3557, 2014

Fractional Canopy Cover in Northwestern Amazonia

M. A. Higgins et al.

[Title Page](#)

[Abstract](#)

[Introduction](#)

[Conclusions](#)

[References](#)

[Tables](#)

[Figures](#)



[Back](#)

[Close](#)

[Full Screen / Esc](#)

[Printer-friendly Version](#)

[Interactive Discussion](#)



on the Pebas Formation and instead correspond to lower NPV and higher PV. These findings suggest that terrain is not a dominant determinant of PV or NPV values in our study areas.

The patterns we observe might also indicate changes in forest productivity between the two formations. Productivity is estimated from remotely-sensed data as the quantity of photosynthetically active radiation absorbed by vegetation (APAR) multiplied by the light-use efficiency of that vegetation (ϵ ; Field et al., 1993; Running, 1990). APAR has traditionally been estimated using the normalized differential vegetation index (NDVI), but PV has recently replaced NDVI in these models (Huang et al., 2008, 2012; Xiao et al., 2004a, b; Yang et al., 2012). PV is thus directly proportional to productivity with the caveat that PV cannot account for variations in productivity due to changes in light-use efficiency. This suggests that the PV patterns observed here may translate directly into patterns in forest productivity, such that productivity is higher on the richer soils of the Pebas Formation and lower on the poorer soils of the Nauta Formation.

Last, our findings suggest that spectral mixture analysis of multispectral imagery for Amazonian forests may facilitate the detection of more than just changes in canopy cover caused by disturbance and fire. Here we observe clear PV and NPV patterns in intact forest, corresponding to soils and species composition, suggesting that spectral mixture analysis might assist in mapping biodiversity in remote forests.

Acknowledgements. For field assistance we thank Fernando Ruiz, Sulema Castro, Glenda Cardenas, and Wilber Bosmediano. For soil analyses, we thank Tapio Salo (MTT Agrifood Research Center, Finland) and Irma Puttonen. For logistic support we thank colleagues at the Instituto de Investigaciones de la Amazonia Peruana and the Universidad Nacional de la Amazonia Peruana; and the PlusPetrol corporation (Argentina), Repsol Exploracion Peru (Peru), the Smithsonian Conservation Biology Institute, and Global Geophysical Services (USA). Funding for this work was provided by the John D. and Catherine T. MacArthur Foundation (USA), the Grantham Foundation for the Protection of the Environment (USA), the Carnegie Institution for Science (USA), the National Science Foundation (USA), the American–Scandinavian Foundation (USA), Duke University (USA), Repsol Exploracion Peru (Peru), and William Hearst III. This is contribution 17 of the Peru Biodiversity Program at the Smithsonian Center for Conservation

BGD

11, 3535–3557, 2014

Fractional Canopy Cover in Northwestern Amazonia

M. A. Higgins et al.

Title Page

Abstract

Introduction

Conclusions

References

Tables

Figures



Back

Close

Full Screen / Esc

Printer-friendly Version

Interactive Discussion



Education and Sustainability. For comments on the manuscript and indicator species analysis we thank Kalle Ruokolainen and Hanna Tuomisto at the University of Turku, Finland. We thank the Instituto Nacional de Recursos Naturales (Peru) for permission to collect plant specimens, and the communities of the Rio Tigre for permission to work in their forests.

5 References

- Alencar, A., Asner, G. P., Knapp, D., and Zarin, D.: Temporal variability of forest fires in eastern Amazonia, *Ecol. Appl.*, 21, 2397–2412, 2011.
- Allnutt, T. F., Asner, G. P., Golden, C. D., and Powell, G. V.: Mapping recent deforestation and forest disturbance in northeastern Madagascar, *Tropical Conservation Science*, 6, 1–15, 2013.
- 10 Asner, G. P. and Warner, A. S.: Canopy shadow in IKONOS satellite observations of tropical forests and savannas, *Remote Sens. Environ.*, 87, 521–533, 2003.
- Asner, G. P., Knapp, D. E., Broadbent, E. N., Oliveira, P. J. C., Keller, M., and Silva, J. N.: Selective logging in the Brazilian Amazon, *Science*, 310, 480–482, 2005a.
- Asner, G. P., Knapp, D. E., Cooper, A. N., Bustamante, M. M. C., and Olander, L. P.: Ecosystem structure throughout the Brazilian Amazon from Landsat observations and automated spectral unmixing, *Earth Interact.*, 9, 1–31, doi:10.1175/EI134.1, 2005b.
- 15 Asner, G. P. and Martin, R. E.: Canopy phylogenetic, chemical and spectral assembly in a lowland Amazon forest, *New Phytol.*, 189, 999–1012, 2011.
- Carvalho, A. L., Nelson, B., Bianchini, M. C., Plagnol, D., Kuplich, T. M., and Daly, D. C.: Bamboo-dominated forests of the Southwest Amazon: detection, spatial extent, life cycle length and flowering waves, *PLOS One*, 8, e54852 doi:10.1371/journal.pone.0054852, 2013
- 20 Field, C. B., Gamon, J. A., and Penuelas, J.: Remote sensing of terrestrial biosynthesis, in: *Eco-physiology of Photosynthesis*, edited by: Schulze, D. and Caldwell, M. M., Springer-Verlag, Berlin, 1993.
- 25 Fine, P. V. A., Mesones, I., and Coley, P. D.: Herbivores promote habitat specialization by trees in Amazonian forests, *Science*, 305, 663–665, 2004.
- Fine, P. V. A., Miller, Z. J., Mesones, I., Irazuzta, S., Appel, H. M., Stevens, M. H. H., Saaksjarvi, I., Schultz, L. C., and Coley, P. D.: The growth-defense trade-off and habitat specialization by plants in Amazonian forests, *Ecology*, 87, S150–S162, 2006.

Fractional Canopy Cover in Northwestern Amazonia

M. A. Higgins et al.

Title Page

Abstract

Introduction

Conclusions

References

Tables

Figures



Back

Close

Full Screen / Esc

Printer-friendly Version

Interactive Discussion



Fractional Canopy Cover in Northwestern Amazonia

M. A. Higgins et al.

[Title Page](#)

[Abstract](#)

[Introduction](#)

[Conclusions](#)

[References](#)

[Tables](#)

[Figures](#)

[⏪](#)

[⏩](#)

[◀](#)

[▶](#)

[Back](#)

[Close](#)

[Full Screen / Esc](#)

[Printer-friendly Version](#)

[Interactive Discussion](#)

- Higgins, M. A. and Ruokolainen, K.: Rapid tropical forest inventory: a comparison of techniques based on inventory data from western Amazonia, *Conserv. Biol.*, 18, 799–811, 2004.
- Higgins, M. A., Ruokolainen, K., Tuomisto, H., Llerena, N., Cardenas, G., Phillips, O. L., Vasquez, R., and Rasanen, M.: Geological control of floristic composition in Amazonian forests, *J. Biogeogr.*, 38, 2136–2149, 2011.
- Higgins, M. A., Asner, G. P., Perez, E., Elespuru, N., Tuomisto, H., Ruokolainen, K., and Alonso, A.: Use of Landsat and SRTM data to detect broad-scale biodiversity patterns in northwestern Amazonia, *Remote Sens.*, 4, 2401–2418, 2012.
- Hoorn, C., Wesselingh, F. P., ter Steege, H., Bermudez, M. A., Mora, A., Sevink, J., Sanmartin, I., Sanchez-Meseguer, A., Anderson, C. L., Figueiredo, J. P., Jaramillo, C., Riff, D., Negri, F. R., Hooghiemstra, H., Lundberg, J., Stadler, T., Sarkinen, T., and Antonelli, A.: Amazonia through time: andean uplift, climate change, landscape evolution, and biodiversity, *Science*, 330, 927–931, 2010.
- Huang, C. Y., Asner, G. P., and Barger, N. N.: Modeling regional variation in net primary production of pinyon-juniper ecosystems, *Ecol. Model.*, 227, 82–92, 2012.
- Huang, M., Asner, G. P., Keller, M., and Berry, J. A.: An ecosystem model for tropical forest disturbance and selective logging, *J. Geophys. Res.-Biogeo.*, 113, G01002 doi:10.1029/2007JG000438, 2008.
- INGEMMET: Mapa Geológico del Perú, Instituto Geologico Minero Y Metalurgico, Lima, 2000.
- Jones, M. M., Ferrier, S., Condit, R., Manion, G., Aguilar, S., and Pérez, R.: Strong congruence in tree and fern community turnover in response to soils and climate in central Panama, *J. Ecol.*, 101, 506–516, doi:10.1111/1365-2745.12053, 2013.
- Malhi, Y., Baker, T. R., Phillips, O. L., Almeida, S., Alvarez, E., Arroyo, L., Chave, J., Czimczik, C. I., Di Fiore, A., Higuchi, N., Killeen, T. J., Laurance, S. G., Laurance, W. F., Lewis, S. L., Montoya, L. M. M., Monteagudo, A., Neill, D. A., Vargas, P. N., Patino, S., Pitman, N. C. A., Quesada, C. A., Salomao, R., Silva, J. N. M., Lezama, A. T., Martinez, R. V., Terborgh, J., Vinceti, B., and Lloyd, J.: The above-ground coarse wood productivity of 104 Neotropical forest plots, *Glob. Change Biol.*, 10, 563–591, 2004.
- Oliveira, P. J. C., Asner, G. P., Knapp, D. E., Almeyda, A., Galvan-Gildemeister, R., Keene, S., Raybin, R. F., and Smith, R. C.: Land-use allocation protects the Peruvian Amazon, *Science*, 317, 1233–1236, 2007.
- Räsänen, M. E., Linna, A. M., Santos, J. C. R., and Negri, F. R.: Late Miocene tidal deposits in the Amazonian foreland basin, *Science*, 269, 386–390, 1995.

Fractional Canopy Cover in Northwestern Amazonia

M. A. Higgins et al.

Title Page

Abstract

Introduction

Conclusions

References

Tables

Figures

◀

▶

◀

▶

Back

Close

Full Screen / Esc

Printer-friendly Version

Interactive Discussion

- Rebata, L. A., Gingras, M. K., Räsänen, M. E., and Barberi, M.: Tidal-channel deposits on a delta plain from the upper Miocene Nauta Formation, Marañon foreland sub-basin, Peru, *Sedimentology*, 53, 971–1013, 2006.
- Running, S. W.: Estimating terrestrial primary productivity by combining remote sensing and ecosystem simulation, in: *Remote Sensing of Biosphere Functioning*, edited by: Hobbs, R. J. and Mooney, H. A., Springer-Verlag, New York, 65–86, 1990.
- Ruokolainen, K., Linna, A., and Tuomisto, H.: Use of Melastomataceae and pteridophytes for revealing phytogeographical patterns in Amazonian rain forests, *J. Trop. Ecol.*, 13, 243–256, 1997.
- Ruokolainen, K., Tuomisto, H., Macia, M. J., Higgins, M. A., and Yli-Halla, M.: Are floristic and edaphic patterns in Amazonian rain forests congruent for trees, pteridophytes and Melastomataceae?, *J. Trop. Ecol.*, 23, 13–25, 2007.
- Salovaara, K. J., Thessler, S., Malik, R. N., and Tuomisto, H.: Classification of Amazonian primary rain forest vegetation using Landsat ETM+ satellite imagery, *Remote Sens. Environ.*, 97, 39–51, 2005.
- Somers, B., Asner, G. P., Tits, L., and Coppin, P.: Endmember variability in spectral mixture analysis: a review, *Remote Sens. Environ.*, 115, 1603–1616, 2011.
- Souza, C. M., Roberts, D. A., and Cochrane, M. A.: Combining spectral and spatial information to map canopy damage from selective logging and forest fires, *Remote Sens. Environ.*, 98, 329–343, 2005.
- ter Steege, H., Pitman, N. C. A., Phillips, O. L., Chave, J., Sabatier, D., Duque, A., Molino, J. F., Prevoist, M. F., Spichiger, R., Castellanos, H., von Hildebrand, P., and Vasquez, R.: Continental-scale patterns of canopy tree composition and function across Amazonia, *Nature*, 443, 444–447, 2006.
- Thiers, B.: Index herbariorum: a global directory of public herbaria and associated staff, in: *New York Botanical Garden's Virtual Herbarium*, available at: <http://sweetgum.nybg.org/ih/>, continuously updated, 2014.
- Tuomisto, H., Ruokolainen, K., Kalliola, R., Linna, A., Danjoy, W., and Rodriguez, Z.: Dissecting Amazonian biodiversity, *Science*, 269, 63–66, 1995.
- Tuomisto, H., Poulsen, A. D., Ruokolainen, K., Moran, R. C., Quintana, C., Celi, J., and Canas, G.: Linking floristic patterns with soil heterogeneity and satellite imagery in Ecuadorian Amazonia, *Ecol. Appl.*, 13, 352–371, 2003a.

Fractional Canopy Cover in Northwestern Amazonia

M. A. Higgins et al.

[Title Page](#)

[Abstract](#)

[Introduction](#)

[Conclusions](#)

[References](#)

[Tables](#)

[Figures](#)

[⏪](#)

[⏩](#)

[◀](#)

[▶](#)

[Back](#)

[Close](#)

[Full Screen / Esc](#)

[Printer-friendly Version](#)

[Interactive Discussion](#)



Tuomisto, H., Ruokolainen, K., Aguilar, M., and Sarmiento, A.: Floristic patterns along a 43-km long transect in an Amazonian rain forest, *J. Ecol.*, 91, 743–756, 2003b.

Tuomisto, H., Ruokolainen, K., and Yli-Halla, M.: Dispersal, environment, and floristic variation of western Amazonian forests, *Science*, 299, 241–244, 2003c.

5 Xiao, X. M., Hollinger, D., Aber, J., Goltz, M., Davidson, E. A., Zhang, Q. Y., and Moore, B.: Satellite-based modeling of gross primary production in an evergreen needleleaf forest, *Remote Sens. Environ.*, 89, 519–534, 2004a.

10 Xiao, X. M., Zhang, Q. Y., Braswell, B., Urbanski, S., Boles, S., Wofsy, S., Berrien, M., and Ojima, D.: Modeling gross primary production of temperate deciduous broadleaf forest using satellite images and climate data, *Remote Sens. Environ.*, 91, 256–270, 2004b.

Yang, J., Weisberg, P. J., and Bristow, N. A.: Landsat remote sensing approaches for monitoring long-term tree cover dynamics in semi-arid woodlands: comparison of vegetation indices and spectral mixture analysis, *Remote Sens. Environ.*, 119, 62–71, 2012.

Fractional Canopy Cover in Northwestern Amazonia

M. A. Higgins et al.

[Title Page](#)

[Abstract](#)

[Introduction](#)

[Conclusions](#)

[References](#)

[Tables](#)

[Figures](#)

[⏪](#)

[⏩](#)

[◀](#)

[▶](#)

[Back](#)









[Close](#)

[Full Screen / Esc](#)

[Printer-friendly Version](#)

[Interactive Discussion](#)

Table 1. Correlation coefficients (r^2) for linear regressions of PV or NPV values against NMDS or LSC, by study area and Landsat image date (all values significant at $P < 0.001$).

Study area	Date ¹	# Transects ²	r^2 , PV vs.:		r^2 , NPV vs.:		Symbol
			NMDS	LSC	NMDS	LSC	
Pastaza-Tigre	01-01-05	65	0.55	0.56	0.25	0.30	
	97-08-30	63	0.73	0.68	0.66	0.66	
	02-10-07	64	0.81	0.74	0.70	0.67	
	96-08-11	65	0.71	0.74	0.68	0.71	
	06-09-08	65	0.61	0.64	0.64	0.66	
Curaray	96-07-10	52	0.26	0.35	0.56	0.66	
	00-08-30	48	0.44	0.39	0.63	0.63	
	96-08-11	50	0.52	0.52	0.65	0.66	

¹ Format is YY-MM-DD where YY indicates year, MM indicates month, and DD indicates day.

² Indicates number of cloud or shadow-free transects available for analysis, out of a total of 65 for Pastaza-Tigre and 52 for Curaray.

BGD

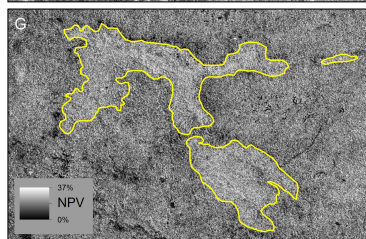
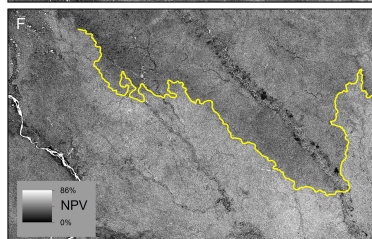
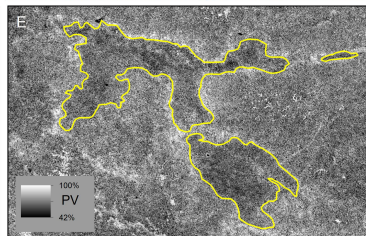
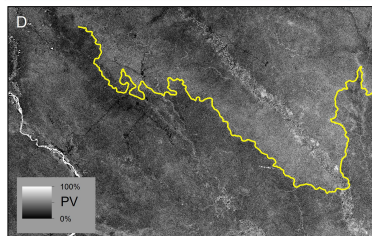
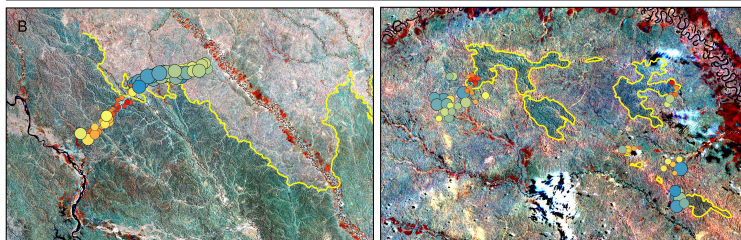
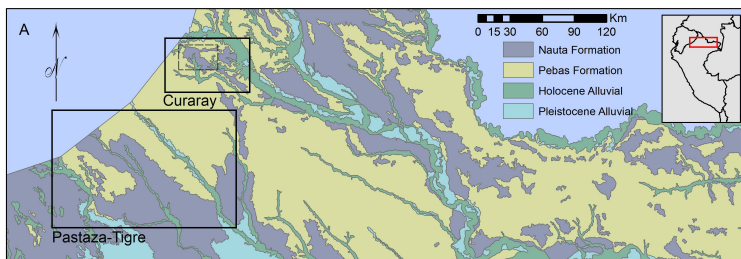
11, 3535–3557, 2014

**Fractional Canopy
Cover in
Northwestern
Amazonia**

M. A. Higgins et al.

[Title Page](#)[Abstract](#)[Introduction](#)[Conclusions](#)[References](#)[Tables](#)[Figures](#)[◀](#)[▶](#)[◀](#)[▶](#)[Back](#)[Close](#)[Full Screen / Esc](#)[Printer-friendly Version](#)[Interactive Discussion](#)**Table 2.** Correlation coefficients (r^2) for regressions of mean PV-NPV values against LSC, NMDS, and LSC & NMDS (all values significant at $P < 0.001$).

Study Area	LSC	NMDS	LSC & NMDS
Pastaza-Tigre	0.71	0.69	0.72
Curaray	0.63	0.60	0.67



Fractional Canopy Cover in Northwestern Amazonia

M. A. Higgins et al.

Title Page

Abstract

Introduction

Conclusions

References

Tables

Figures



Back

Close

Full Screen / Esc

Printer-friendly Version

Interactive Discussion



Fractional Canopy Cover in Northwestern Amazonia

M. A. Higgins et al.

Fig. 1. Patterns in geology, soils, plant species composition, and PV and NPV at sites in northern Peru. **(A)** Geological map for northern Peru (INGEMMET, 2000) with extents of maps in **(B)** to **(G)** indicated by solid and dashed lines. Gray inset indicates position of **(A)** relative to boundary of Peru. **(B)** and **(C)** Nonmetric multidimensional scaling (NMDS) scores and the log-transformed sum of Ca, Mg, Na, and K concentrations (LSC) overlaid upon Landsat data for Pastaza-Tigre and Curaray study areas, respectively. Points indicate inventory sites and are sized by LSC values and colored by NMDS values, such that larger sizes indicate higher LSC values and blue tones indicate higher NMDS values. Landsat bands four, five and seven correspond to red, green, and blue. Yellow line indicates the boundary between the Pebas and Nauta Formations; the Nauta Formation is to the west of the boundary in **(B)** and inside the boundary in **(C)**. The Pastaza River is located in the far west in **(B)**; the Tigre River runs north-west to southeast through the center of **(B)**; and the Curaray River runs from west to east in the north and east of **(C)**. **(D)** and **(E)** PV images for the Pastaza-Tigre and Curaray study areas generated from Landsat imagery for 8 September 2006 and 30 August 2000, respectively. Light tones indicate higher values and dark tones indicate lower values. Extent of **(E)** is indicated by dashed lines in **(A)**. **(F)** and **(G)** NPV images for Pastaza-Tigre and Curaray, as per **(D)** and **(E)**.

Title Page

Abstract

Introduction

Conclusions

References

Tables

Figures

⏪

⏩

◀

▶

Back

Close

Full Screen / Esc

Printer-friendly Version

Interactive Discussion

Fractional Canopy Cover in Northwestern Amazonia

M. A. Higgins et al.

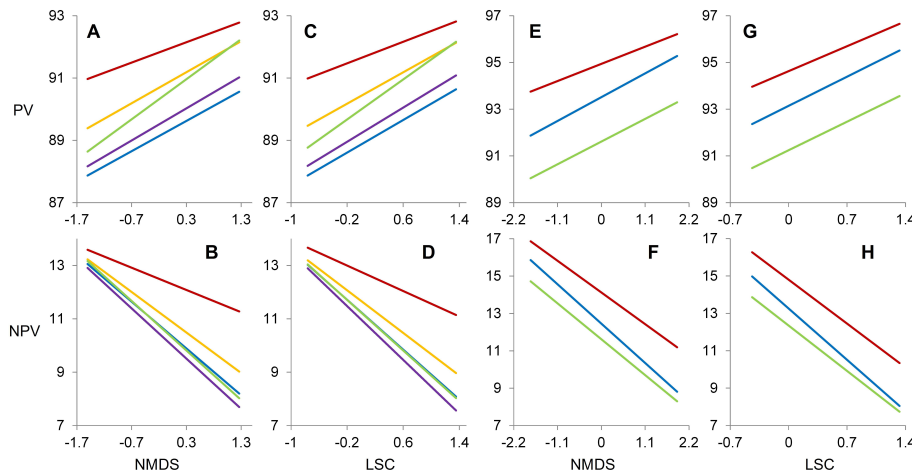


Fig. 2. Relationship between plant species composition, soil cation concentrations, and productivity at sites in northern Peru. **(A) to (H)** Linear regressions of the log-transformed sum of Ca, Mg, Na, and K concentrations (LSC) or nonmetric multidimensional scaling (NMDS) values against PV or NPV for Pastaza-Tigre sites **(A–D)** or Curaray sites **(E–H)**. Each regression line represents a single Landsat image date, and lines are color-coded by date. Image dates and correlation coefficients are provided in Table 1. $P < 0.001$ for all regressions.

Title Page

Abstract

Introduction

Conclusions

References

Tables

Figures

⏪

⏩

◀

▶

Back

Close

Full Screen / Esc

Printer-friendly Version

Interactive Discussion

Fractional Canopy Cover in Northwestern Amazonia

M. A. Higgins et al.

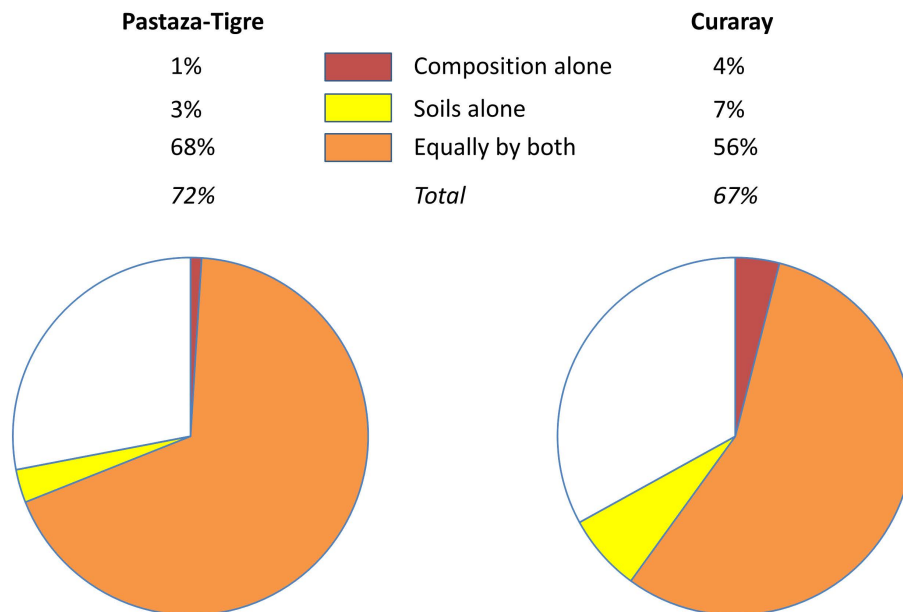


Fig. 3. Contributions of soil fertility and plant species composition to PV-NPV values. Pie charts representing the percentage of variation in PV-NPV values explained by NMDS values alone (red), LSC values (yellow), or equally by both (orange), for the Pastaza-Tigre and Curaray study areas; correlation coefficients are provided in Table 2.

[Title Page](#)
[Abstract](#)
[Introduction](#)
[Conclusions](#)
[References](#)
[Tables](#)
[Figures](#)
[⏪](#)
[⏩](#)
[◀](#)
[▶](#)
[Back](#)
[Close](#)
[Full Screen / Esc](#)
[Printer-friendly Version](#)
[Interactive Discussion](#)