

Free Ocean CO₂ Enrichment (FOCE) systems: present status and future developments

J.-P. Gattuso^{1, 2}, W. Kirkwood³, J.P. Barry³, E. Cox^{1, 2}, F. Gazeau^{1, 2}, L. Hansson⁴,
I. Hendriks⁵, D.I. Kline⁶, P. Mahacek^{1, 2}, S. Martin^{7, 8}, P. McElhany⁹, E.T. Peltzer³,
J. Reeve¹⁰, D. Roberts¹¹, V. Saderne¹², K. Tait¹³, S. Widdicombe¹³, and
P.G. Brewer³

¹Sorbonne Universités, UPMC Univ Paris 06, Observatoire Océanologique, F-06230
Villefranche-sur-mer, France

²CNRS-INSU, Laboratoire d'Océanographie de Villefranche, F-06230 Villefranche-sur-mer,
France

³Monterey Bay Aquarium Research Institute, 7700 Sandholdt Road, Moss Landing, CA 95039,
USA

⁴Ocean Acidification International Coordination Centre, IAEA-Environment Laboratories, 4a Quai
Antoine 1er, MC-98000 Monaco, Principality of Monaco

⁵Global Change department, IMEDEA (CSIC-UIB), Instituto Mediterráneo de Estudios
Avanzados, C/ Miquel Marqués 21, 07190 Esporles (Mallorca), Spain

⁶Scripps Institution of Oceanography, Integrative Oceanography Division, University of California,
San Diego, 9500 Gilman Drive, MC 0218, La Jolla, CA 92093–0218, USA

⁷Sorbonne Universités, UPMC Univ Paris 06, Station Biologique, Place Georges Teissier, 29688
Roscoff Cedex, France

⁸CNRS, Station Biologique, Place Georges Teissier, 29688 Roscoff Cedex, France

⁹Conservation Biology Division, Northwest Fisheries Science Center, National Marine Fisheries
Service, National Oceanic and Atmospheric Administration, 2725 Montlake Blvd. E, Seattle, WA
98112, USA

¹⁰Department of the Environment, Channel Highway, Kingston, Tasmania, Australia

¹¹Antarctic Climate and Ecosystems Cooperative Research Centre, University of Tasmania, Private
Bag 80, Hobart, T 7001, Australia

¹²Benthic Ecology group, GEOMAR: Helmholtz Center for Ocean Research in Kiel, Kiel,
Schleswig-Holstein, Germany

¹³Plymouth Marine Laboratory, Prospect Place, West Hoe, Plymouth PL1 3DH, United Kingdom

Correspondence to: J.-P. Gattuso
(gattuso@obs-vlfr.fr)

Abstract. Free Ocean CO₂ Enrichment (FOCE) systems are designed to assess the impact of ocean acidification on biological communities *in situ* for extended periods of time (weeks to months). They overcome some of the drawbacks of laboratory experiments and of field observations by enabling (1) precise control of CO₂ enrichment by monitoring pH as an offset of ambient pH, (2) consideration of indirect effects such as those mediated through inter-specific relationships and food-webs, and (3) relatively long experiments with intact communities. Bringing perturbation experiments from the laboratory to the field is however extremely challenging. The main goal of this paper is to provide guidelines on the general design, engineering, and sensor options required to conduct FOCE experiments. Another goal is to introduce xFOCE, a community-led initiative to promote awareness, provide resources for *in situ* perturbation experiments, and to build a user community. Present and existing FOCE systems are briefly described and examples of data collected presented. Future developments are also addressed as it is anticipated that the next generation of FOCE systems will include, in addition to pH, options for oxygen and/or temperature control. FOCE systems should become an important experimental approach for projecting the future response of marine ecosystems to environmental change.

1 Introduction

The oceans absorb about 25 % of anthropogenic carbon dioxide (CO_2) emissions, moderating the rate and severity of climate change (Le Quéré et al., 2013). While this is a valuable service to human societies, it has important implications for the oceans. The massive input of CO_2 generates critical changes in the chemistry of seawater, especially in the carbonate system. These changes are collectively referred to as “ocean acidification” because increasing CO_2 lowers seawater pH (i.e. increases its acidity). The pH of ocean surface water has decreased by about 0.1 unit since the beginning of the industrial era, corresponding to a 26 % increase in hydrogen ion concentration (Orr, 2011). Earth System Models project a global additional decrease in pH by 2100 ranging from 0.06 to 0.32 units depending on our future emissions, with the latter value, associated with a 163 % increase in hydrogen ion concentration from pre-industrial times, being the best estimate based on our emissions trajectory (Ciais et al., 2013).

Ocean acidification may have profound impacts on marine biota, for example through the direct effects of pH on inter-cellular transport mechanisms that control the physiology and metabolism of marine organisms and the decreased availability of carbonate ions, used by many species to build calcareous shells and skeletons (Kroeker et al., 2013). Other functional groups, such as primary producers that use CO_2 to produce organic matter, may take advantage of its increased availability in the coming decades (Riebesell and Tortell, 2011).

As studies of the consequences of ocean acidification for marine organisms and ecosystems expanded rapidly over the past decade, the methods employed to evaluate the effects of future changes in ocean chemistry have become more sophisticated. Initial studies frequently involved measurements of the survival or physiological response of individuals of marine species to large changes in the partial pressure of CO_2 (pCO_2) or pH, while held in small containers under laboratory conditions with modified seawater, microbes and food conditions (Gattuso and Hansson, 2011). This approach increased the level of understanding of the effects of these environmental changes on individual species but provided little information concerning the response of natural assemblages where indirect effects can be important. Indirect effects occur where species that are not directly affected by changing ocean chemistry nonetheless experience changes in abundance or distribution because their prey, predators or competitors are reduced or increased by ocean acidification.

In order to improve our understanding of the future impacts of ocean acidification on marine life, three major types of *in situ* data can be used: (1) time series of changes in community structure correlated with changes in carbon chemistry (2) observational studies that compare patterns or processes between areas that differ naturally in seawater acidity and (3) perturbation experiments, where environmental conditions are manipulated to compare patterns or processes between artificially acidified and control conditions (Barry et al., 2010). Although time series directly documenting changes in organismal abundance or distribution in response to ocean acidification are extremely valuable, long-term data sets coupling biological observations and carbon chemistry measurements are generally

not available (but see, for example, Wootton et al., 2008). In addition, using time series analysis, it is difficult to disentangle any ocean acidification effects from the effects of other environmental changes, such as climate, pollution or fishing. Comparing contemporary areas with different carbonate chemistry conditions, such as near natural CO₂ vents (Fabricius et al., 2011; Hall-Spencer et al., 2008; Martin et al., 2008) or along other gradients (e.g. Thresher et al., 2011), can provide critical data and insight on the long-term impacts of ocean acidification on benthic organisms, communities and ecosystems (Hall-Spencer et al., 2008; Martin et al., 2008; Wootton et al., 2008; Fabricius et al., 2011). However, spatial comparisons have several limitations: there is no control over treatment conditions and (in the case of vent studies) organisms are locally exposed to short-term extreme pH levels, and there are confounding factors, such as the release of potentially harmful gases (Boatta et al., 2013) and immigration into the study site of juveniles from outside the study areas, which often make the results difficult to interpret.

The Free Ocean CO₂ Enrichment (FOCE) experimental approach attempts to address some of the limitations of other methods by conducting ocean acidification experiments *in situ*. FOCE experiments are analogous to pelagic mesocosm (Riebesell et al., 2013a) experiments that examined the response of natural plankton communities to controlled pH perturbations, advancing methods of ocean acidification research toward more comprehensive studies of whole communities and embedded processes under mostly natural conditions (e.g. Riebesell et al., 2013b). Free Air CO₂ Enrichment (FACE) experiments in terrestrial systems, which have been providing critical and unexpected data on the impacts of elevated CO₂ on terrestrial ecosystems for more than two decades and has led to over 120 peer-reviewed publications (Ainsworth and Long, 2005). The first FOCE systems were developed at the Monterey Bay Aquarium Research Institute (MBARI; Walz et al., 2008; Kirkwood et al., 2011), but other FOCE systems have since been deployed or are being planned around the globe (see section 4).

We define FOCE as a technology facilitating studies of the consequences of ocean acidification for marine organisms and communities by enabling the precise control of CO₂ enrichment within *in situ*, partially-open, experimental enclosures. By focusing, for reasons described below, on systems that use partially-open enclosures, this definition does not include all marine *in situ* carbonate parameter manipulation experiments. In pelagic mesocosm experiments (Riebesell et al., 2013a), a bag completely encloses a volume of seawater. The carbonate system is generally altered at the beginning of the experiment through additions of CO₂-enriched seawater, and subsequently drifts in response to biological processes and air-sea gas transfer. A fully enclosed benthic *in situ* CO₂ enrichment system has also been developed. The Submersible Habitat for Analyzing Reef Quality (SHARQ) system has been modified from strictly measuring carbonate parameters (Yates and Halley, 2006) to manipulating carbonate parameters by the addition of CO₂ enriched seawater (Yates, pers. comm.).

CO₂ bubbling in open water without any enclosure has also been used (Arnold et al., 2012). This

90 experiment is more “free ocean” than is encompassed in our FOCE definition, which is restricted to partially enclosed systems. Because the chemical reactions that occur when CO₂ is added to seawater are relatively slow (on the order of 10s of seconds to minutes depending on temperature and pH), the open water approach does not enable precise control of carbonate system parameters by pH monitoring because it does not allow sufficient time to ensure full equilibration of added CO₂ 95 in seawater. Since there are no experimental enclosures to regulate water flow the method generates highly variable pH under variable current speed or direction. This approach is therefore more similar to natural CO₂ vents than to FOCE systems and has the associated advantages and disadvantages.

Although straightforward in concept, engineering and logistic aspects of FOCE technology are very challenging to implement. The goal of this paper is to provide information on the general design 100 of FOCE experiments (section 2) as well as recommended sensors, suggested designs depending on scientific needs and details about the pH control system (section 3). It also provides an overview of past and present FOCE systems (section 4), outlines future engineering and research directions (section 5) and describes community building and overarching activities (sections 6 and 7).

2 General design

105 The key elements of any FOCE experimental units are partially open enclosures that allow control of seawater conditions, but retain through-flow of ambient seawater, a CO₂ mixing system, sensors to monitor ambient and enclosure pH as well as other critical environmental parameters, and a control loop to regulate the addition of gases or liquids to each experimental enclosure (Fig. 1). Ideally, FOCE systems could control the carbonate chemistry and other parameters (e.g. oxygen, temperature) 110 in several relatively large experimental plots (ca. > 10 m²) and would be fully open (i.e. not requiring enclosures). In practice, FOCE systems require far more constrained conditions.

Another key element of FOCE systems is the flexibility in the design to enable investigation of different communities and environments (see section 4). The environmental and logistical features of potential experiment sites introduce challenges to configuring a FOCE experiment. The availability of electrical power, sources and delivery of CO₂, experiment enclosure size, and regional 115 seafloor topography and flow patterns are the primary factors that determine the final implementation. Furthermore, the expected duration of the FOCE system and planned experiments as well as the size and the availability of the team available for maintenance and data collection are important considerations for logistics and associated costs.

120 It is necessary to measure various parameters in the area inside and of outside the controlled volume. In existing FOCE systems, pH data are needed as the perturbed pH is usually determined by an offset to the ambient pH. Also, one of the most important concerns for FOCE experiments is being able to ensure that natural conditions, except for pH, prevail in the experimental enclosures despite the partial confinement. For that purpose, measurements of salinity, temperature, oxygen,

and a second parameter of the carbonate system outside the controlled volume are desirable. The deployment of FOCE systems in areas where local physicochemical and biological conditions have been monitored for several years is recommended in order to place the experimental conditions in a broader timescale.

2.1 Enclosures

The land-based Free-Air CO₂ Enrichment (FACE) experiments involved horizontal or vertical pipes placed in a circle around areas of forest, grassland or commercial crops using natural and fully open conditions (Ainsworth and Long, 2005). Although it is desirable for FOCE experiments to mimic FACE and be as open as possible to maintain a natural environment, there are a number of practical issues that prevent the use of a fully open experiment, the most important being the slow reaction kinetics of CO₂ chemistry in seawater (see section 2.4). The design of the enclosure can vary considerably depending on the focus of experiments, but must allow some ventilation of the enclosed plot with ambient water. Some designs may allow the flow of detritus through the enclosure, while others may be fully closable and function temporarily as respirometric chambers. Enclosures may be fabricated from various materials. Acrylic may be most appropriate for shallow water experimental studies that require natural light. Although acrylic is difficult to work with, and has less intrinsic strength, it has superior optical properties than polycarbonate, and transmits the full spectrum of natural light. In addition, acrylic does not lose these properties with age, while polycarbonate exposed to sunlight slowly becomes opaque.

The behavior of animals may also influence the design and openness of FOCE experiments. Experimental enclosures may contain mobile animals which can either swim or burrow out of the enclosure if or when conditions become adverse. The structure of the FOCE enclosure itself can attract animals searching for shelter, which may in turn affect the hydrodynamic regime and result in an increase in deposition of nutrient-rich fecal material. The enclosure may also contain prey for predators able to burrow under the walls into the enclosure. It may, therefore, be desirable to limit both access and egress to the enclosure (e.g Deep FOCE, thereafter dpFOCE, section 4.1). Alternatively, if the FOCE enclosure is large enough, additional cages or baskets may be placed inside it to safely contain experimental plants or animals. Care must be taken not too anchor the enclosure too deeply into non-cohesive sediment as this may disrupt the pore water flow and the advective exchange of material across the sediment-water interface.

2.2 Size and volume

The area and volume of existing and planned FOCE units range from 0.25-2 m² and 0.06-2 m³ (Table 1). Units should be as large as possible as large units enable smoothing out of small-scale changes in the composition of the community and better represent the response of the community. However, there are critical engineering and financial constraints on the size of FOCE units related

to the amount of CO₂ required, the number of replicate enclosures required, the performance of the CO₂ control system, and the signal to noise ratio. Small FOCE units can be used to investigate the response of specific representatives of the ecosystem, for example sedimentary areas within a coral reef or seagrass bed.

Although it would reduce some of the size constraints, manipulating the carbonate system in lagoons or embayment has never been attempted and the large amount of CO₂ which would need to be added seems to preclude such experiments. It may be possible, however, to perform FACE-like experiments in sectors of very shallow areas subject to a unidirectional water flow, such as coral reef flats. Controlling pH upstream would subject the downstream community to future conditions, although with less ability to control the future pH conditions.

The present and planned FOCE systems have very different designs (see section 4) because they focus on different biological communities, explore different engineering options, and were subject to different logistical constraints. There would be considerable benefits to use more standardized systems. It would ensure comparability of results, the development of joint experiments with an increased number of environmental conditions or increased replication. The size of complete FOCE systems would benefit from modularity that eases the complexity of shipment and assembly. FOCE installations in extreme environments may be logistically challenging and will benefit from careful planning, and preassembly of surface and underwater modules.

2.3 Number of subunits and experimental design

The design of each FOCE experiment uniquely reflects the goals and the approach taken by the investigators for the environment and biological community studied. Possible experimental designs fall into three broad categories (Table 2). The very first FOCE system constructed (dpFOCE) had only one unit with a manipulated carbonate chemistry. This was primarily an engineering test unit to learn about controlling CO₂ enrichment by monitoring the internal pH offset versus ambient seawater. Later designs used at least two units, one serving as a control and one or two having their carbonate system manipulated.

Design should also include randomization, replication, and controls (Hurlbert, 1984; Tilman, 1989). Economic constraints are likely to limit the number of enclosures, but there should be several, if possible, in order to analyze the data through regression (requiring multiple enclosures with increasing levels of treatment) rather than through analyses of variance (see Havenhand et al., 2010).

Because of cost and feasibility, replication is challenging for FOCE experiments, particularly for studies that require (1) large units, (2) deployment in a challenging environment, or (3) lengthy testing durations. A struggle between the need to replicate and the need to study processes at appropriately large natural scales has existed for decades (Carpenter, 1990). Adding to design difficulty, replicates collected from within the same mesocosm are considered as pseudo-replicates (Hurlbert, 1984; Gamble, 1990; Heffner et al., 1996). Environmental impact studies have dealt with

the “pseudo-replication problem” by sampling through time (Stewart-Oaten et al., 1986; Underwood, 1994; Stewart-Oaten and Bence, 2001). When necessary, FOCE experiments could benefit from a similar, replication in time, approach. Repeating long term experiments can be difficult or impossible, depending on funding. In addition, it is very likely that the FOCE enclosures must be relocated
200 between repeated experiments to increase independence between experimental replicates (in time). Hence, if at all possible, multiple enclosures should be preferred.

To date, nested or fully crossed designs to test the impacts of multiple stressors with FOCE have not been performed. However, FOCE systems could be deployed along natural or man-made environmental gradients and used with regression analyses to examine multi-stressor impacts (see section
205 5 for further discussion). Alternately, researchers could use scenario or orthogonal approaches.

Because of the variability in organismal and community processes, differences among treatments need to be large to be detected. Despite replication limitations, Kline et al. (2012) were able to detect consistent differences in the dissolution of calcified structures. The authors also argued that FOCE experiments have inherent value that laboratory experiments do not. Oksanen (2001) made
210 an eloquent argument that an experiment conducted at the ecosystem level with limited replication, if scientifically-grounded, arguably provides a more useful understanding than many well-replicated laboratory investigations. Similarly, Heffner et al. (1996) pointed out that even Hurlbert (1984) in his article on ecological field experiments recognized that the quality of an experiment depends upon more than design. Furthermore, a meta-analysis, which resembles a nested design with replicates,
215 could be conducted with FOCE experiments to identify any unusual experimental outcomes. A “control” enclosure allowed to fluctuate at natural pH levels is necessary in FOCE designs to account for the artificial boundary created by the structure which is absent in nature. Inside the structures, every effort should be taken to mimic natural conditions. Furthermore, the “perturbed” and “treated” environment and organisms should be manipulated in a similar manner. For example, the pumping
220 system used to deliver CO₂ into treated structures should ideally be used in the control enclosure (without CO₂ addition). Also FOCE experiments conducted over several months will need to account for seasonality. In these instances a natural/ambient or reference area, outside the enclosure and open to environment, should be considered in the experimental design.

Once the experimental design has been defined according to the budget available as well as to
225 technical and logistical constraints, the pH or pCO₂ levels need to be determined. Barry et al. (2010) have provided comprehensive guidance for selecting these levels. Unless the goal of the experiment is to identify physiological and molecular pathways, in which case extreme pH values can be useful, FOCE experiments generally use environmentally relevant carbonate chemistries. The approach usually consists of lowering pH in the perturbed units by a fixed offset value corresponding to a
230 pH value projected according to a CO₂ emission scenario (for example, one of the Representative Concentration Pathways; van Vuuren et al., 2011). In contrast to many laboratory experiments which used a constant carbonate chemistry, the FOCE technology is one of the approaches that maintains

the natural daily and seasonal pH changes. It is worth noting that, to date, no FOCE experiment has attempted a treatment to increase pH to mimic preindustrial (+0.1 unit) or glacial (+0.2 unit) pH, partially due to the chemical difficulty of removing CO₂ from seawater.

2.4 pH manipulation

Initial trial experiments using a fully open system have highlighted the difficulties of creating accurate low pH conditions in a freely moving body of seawater (Walz et al., 2008). Subsequently, all chemical equilibrium FOCE experiments have been semi-enclosed and made use of the Zeebe and Wolf-Gladrow (2001) CO₂ kinetic model of e-folding time (τ) to calculate the time delay between CO₂ addition and equilibration for a given pH, CO₂ concentration and temperature. Because the chemical reactions between the various carbonate species are slow, one needs to allow sufficient time for equilibrium to be reached before the introduction of the CO₂ enriched seawater into the experimental chamber. For FOCE experiments, equilibrium is assumed to have been reached at any time past $3 \times \tau$. By using these calculations and continued monitoring of pH, temperature and current velocity, a set pH can be successfully maintained even in areas of low temperature, such as dpFOCE and Antarctic FOCE (antFOCE), and high flow rates and high wave energy, such as Coral Proto FOCE (cpFOCE) and European FOCE (eFOCE).

Early FOCE prototypes developed at MBARI used hydrochloric acid or liquid CO₂ for the early proof of concept experiments. It would also possible to inject CO₂ or CO₂-rich air as this requires special handling and delivering gases is more difficult than delivering water. It also introduces the added difficulty of equilibrating seawater with a gas which is considerably slower than mixing two water bodies. Consequently, all recent FOCE systems have used metered addition of CO₂-enriched, low pH seawater in the enclosures, which is one of the recommended approaches of pH manipulation because it closely mimics the natural process of ocean acidification (Gattuso et al., 2010). The delivery of CO₂-rich seawater, obtained by bubbling pure CO₂ through seawater, is continually adjusted to maintain a constant pH offset relative to ambient pH, or to maintain a constant pH level in experimental enclosures. An example of a pH regulation test in the frame of the dpFOCE project (Fig. 2) demonstrates that precise pH control can be achieved. The negative spikes in ambient seawater trace are due to "blow-back" of CO₂-treated seawater onto the external sensors. This illustrates the need for bi-directional flume operation (so that the outlet is always downstream of the external sensor) or locating the external sensors further away from the test chamber.

The key elements of any pH manipulation system include the CO₂ mixing system, sensors to continuously monitor ambient and enclosure pH, and a control loop to regulate the flow of CO₂-enriched seawater (ESW) to each enclosure. The best option is to set up a supply reservoir that allows for variable delivery on demand. The manufacture of ESW and pH control can be performed either from a shore station, buoy or a nearby apparatus with a hose delivering the ESW to the enclosures.

In general, the rate and range of pH change in experimental enclosures should be aligned with

the pattern of natural pH variation at the study site, which likely reflects the physiological tolerances, resilience, and potential for adaptation to pH changes by the local biological assemblage. The natural range and variability of pH conditions experienced by the organisms may effectively have profound consequences on their physiology (e.g. Price et al., 2012). Many near shore environments are exposed to large diurnal fluctuations in pH associated with daytime and nighttime changes in the intensity of photosynthesis/respiration and/or calcification/dissolution, as well as water advection owing to tidal cycles and changes in winds (Andersson and Mackenzie, 2012). Note, however, that alternative treatments such as constant pH or abrupt changes may be required for particular experimental questions.

Hofmann et al. (2011) reported rates of change in pH for various ecosystems. Among them, upwelling regions, estuaries, coral reefs and kelp forests exhibit large daily fluctuations of about 0.25 units, corresponding to mean rates of pH changes of 0.01-0.04 unit h⁻¹. Diel range similar to or larger than the changes projected over the next century are often measured in coral reefs (e.g. Price et al., 2012) and tropical estuaries (Yates et al., 2007). In contrast, changes in pH in the open ocean do not exceed 0.001 unit h⁻¹ (Hofmann et al., 2011). In temperate systems, shallow-water habitats dominated with macrophytes are also likely to present strong diurnal pH variations with the highest variability in the shallowest waters and decreasing with increasing water depth (Middelboe and Hansen, 2007). Diel pH fluctuation in macroalgal-dominated communities may reach 1 unit h⁻¹ (varying from pH 7.8 to 8.6, presumably on the NBS scale; Middelboe and Hansen, 2007). Even larger changes may occur in the tidal zone. For example tidal pools experienced pH oscillations related to the tide with rapid changes of pH as high as 1 to 3 unit in low level rock pools in Brittany (pH_T from 7.7 to 8.6; Egilisdottir et al., 2013) and high level rock pools in Scotland (pH from 6.4 to 9.4, presumably on the NBS scale; Morris and Taylor, 1983). Organisms exposed to such conditions may experience rapid pH changes as high as 0.1 to 0.3 pH unit h⁻¹ in the surrounding seawater. However, only the pH of seawater surrounding the organism affects its physiology. The pH at the surface of the organism (diffusion boundary layer) may differ from the mainstream seawater due to exchanges related to metabolic activities which may locally modify the pH microenvironment (Hurd et al., 2011). The seawater flow at the surface of the organism is also important as it sets the thickness of the layer. For example over a diel cycle coralline algae encounter pH changes of +0.5 unit in the light and -0.35 unit in the dark relative to the pH of ambient seawater (Hurd et al., 2011). Sea urchins may also be subjected to very low pH values (down to 7.5 on the NBS pH scale) at their surface in slow flows. Conversely, under high flows, pH at the surface of the organisms is close to ambient pH. The surrounding hydrodynamic environment as well as the organisms' physiology and morphology should thus be considered to evaluate the differential susceptibility of organisms to pH changes.

The rate of pH decrease to reach the experimental offset used in existing FOCE systems has been highly variable (from hours to month in steps of 0.05 to 0.1 pH unit) and is mainly constrained by

the duration of the experiment (Table 3). The ideal situation for the initial rate of perturbation is to avoid exceeding the natural rate of change. An initial rate of pH change of up to 0.05-0.1 unit h⁻¹ should thus be acceptable for most habitats.

2.5 Sampling

310 Given that FOCE systems represent a large investment in terms of both time and effort, it is not surprising that researchers are keen to maximize the amount of information these experiments generate. Consequently, there is a desire to take a large number and variety of samples from any single FOCE enclosure. On one hand this should be encouraged, particularly when complementary samples are taken which support the observation and interpretation of whole system effects or which
315 identify key trade-offs between biological responses. However, heavy sampling from such spatially restricted systems (current FOCE systems containing typically less than 2 m² of sea floor) can have a number of negative impacts on the representativity and effectiveness of these experiments. This is most obvious for samples that are destructive in nature, such as the direct removal of material. In such cases it can be argued that, once destructive sampling has been conducted within the enclosure, all subsequent responses to the CO₂ perturbation could be compromised. Therefore, it is
320 recommended that destructive sampling should only be conducted at the end of the experimental exposure period or be of sufficiently small scale so as to not significantly impact upon the structure and the function of the community within the enclosure. Biological samples required to describe the initial or starting conditions, prior to the CO₂ exposure, could be collected from areas close to the
325 enclosures, rather than inside them, if impact is a concern.

For non-destructive samples of sufficiently small scale, such as direct visual observations, settlement panels or chemical and physical sensors, it is possible to make more frequent observations throughout the exposure period. However, even if no material is actually removed from the enclosure, it is still possible that non-destructive sampling can have a negative impact upon the health of
330 organisms contained within the enclosure. For example, the continued physical disturbance caused by divers entering the enclosure during preliminary testing of the eFOCE system (see section 4.3), resulted in a noticeable degradation in the seagrass habitat in the enclosure relative to habitat outside the enclosure. A possible solution to this problem is to automate sampling as much as possible through the deployment of cameras and auto-sampling devices, thereby reducing the frequency at
335 which observers need to directly interact with the enclosure. Disturbance is also an issue to be considered when planning regular cleaning and maintenance, where greater automation would also be a benefit. Additionally, the design of the enclosure should allow easy access for sampling and maintenance in order to minimize disturbance.

Finally, consideration should be given to the timing of sampling or observation activities. A
340 strength of FOCE systems is their exposure to environmental conditions which are generally more realistic than laboratory-based studies. They, thus, are subjected to natural short-term (e.g. tidal,

diurnal) and long-term (e.g. seasonal) cycles experienced in the field. Whilst this adds to the realism of FOCE experiments it also presents a few challenges with respect to sampling. Care should be taken to ensure that data are collected and interpreted in the context of these cycles.

345 2.6 Data access and density

FOCE sensors collect a large amount of data that need to be monitored, processed, stored, and accessible from the storage system. The data serve two purposes: (1) monitor the electronics and system functionality and (2) collect meaningful data to understand the effects of ocean acidification. The frequency for sensing should be based upon the ability and accuracy of the sensors and upon
350 knowledge of past environmental fluctuations at the study site. If the sensors, such as pH electrodes, are used for feedback control, higher sampling rates are required to provide rapid enough data for feedback decisions. Researchers need to have rapid access to the sensor data, ideally in real-time, to ensure that the system is functioning properly and to identify extreme values.

3 Key sensors and scientific needs

355 FOCE experiments depend on careful monitoring and control of the carbonate system. In addition, other parameters are typically monitored to examine various processes (e.g. metabolic rates). Because the sensor system is so critical, we discuss in this section issues related to measuring “essential parameters” considered necessary for FOCE systems and “optional parameters” that may be required for specific applications.

360 3.1 Essential parameters

3.1.1 pH

Considering that a primary goal of FOCE systems is to control of seawater pH within experimental enclosures, pH sensors and their calibration protocols must be selected carefully. Ocean acidification experiments involve pH perturbations of up to 0.4 pH unit below ambient. Sensors with a
365 precision better than 0.003 pH unit are required in order to have a good pH control. To date, FOCE systems have used potentiometric pH electrodes, which often exhibit significant drift with time due to diffusion of seawater into the KCl reference solution. Therefore, such electrodes require frequent calibration and comparison with pH measurements from discrete water samples. The pH of discrete water samples can be accurately measured spectrophotometrically (accuracy ± 0.005 pH units; Table
370 4) or computed based on total alkalinity (A_T) and total inorganic carbon (C_T) measurements (accuracy ± 0.007 pH units; Table 5). The electrode used for controlling pH must be calibrated when the measured pH differs from the pH value estimated from discrete sample by more than a threshold value (e.g. 0.05 pH unit). Calibration is performed in the laboratory using buffers at a temperature close to *in situ* temperature as described by Dickson et al. (2007).

375 There are few commercially-available potentiometric pH electrodes designed for underwater de-
ployment with the required precision and accuracy. One example is the Seabird SBE 18 pH sensor
which uses a pressure-compensated glass electrode Ag/AgCl-reference probe to provide *in situ* mea-
surements at depths up to 1200 m. The earlier version of this electrode was modified by MBARI
to reach a precision of 0.0003 pH units. The most recent commercial version reaches a similar
380 precision. Both versions drift due to seawater contamination of KCl reference buffer; therefore
the accuracy varies depending upon the frequency of calibration and duration of deployment (drift
decreases with time). As alternative to the potentiometric electrode, an ion sensitive field effect tran-
sistor (ISFET) sensor can be used, such as the Honeywell Durafet™. The advantages of the ISFET
include robustness, stability and precision that make it suitable for ocean pH measurements. An
385 ISFET sensor has been incorporated into the deployable SeaFET™ package developed at MBARI
and the Scripps Institution of Oceanography (Martz et al., 2010) and commercialized by Satlantic.
SeaFET™ sensors have been successfully deployed in shallow water applications monitoring (Hof-
mann et al., 2011) and will be used in antFOCE (see section 4.5). Current ISFET sensors are only
deployable to a depth of ca. 70 m, but versions that can operate at greater depth are in development.
390 A recent XPRIZE contest (<http://oceanhealth.xprize.org>) is helping spur the development of new
ocean pH sensors and it is anticipated that more options may become available soon.

3.1.2 Salinity, temperature and dissolved oxygen

Salinity and temperature are required to assess the carbonate system parameters and control pH
(see section 2.4). Dissolved oxygen is a key parameter characterizing the environmental setting and
395 can be used to assess net community production and respiration based on closed chamber incuba-
tions. For example, community metabolism can be measured by observing changes in oxygen levels
in a temporarily closed FOCE enclosure. Photosynthesis-irradiance curves of *Posidonia* seagrass
communities in the bay of Villefranche have been derived from changes in oxygen concentration
measured during 24 h incubation with the eFOCE system (Fig. 3).

400 FOCE units should therefore be equipped with "conductivity temperature depth" (CTD) instru-
ments. Most commercial CTDs have specifications suitable for FOCE systems, with accuracies for
temperature and salinity better than 0.002 °C and 0.001, while typical drifts are about 0.0002 °C and
0.0001 month⁻¹, respectively. Various optical oxygen sensors have successfully been tested in the
field (see <http://www.act-us.info>) and are commercially available. They typically exhibit a precision
405 and accuracy of about 2 and 3 μmol kg⁻¹ respectively.

3.1.3 Additional parameter of the carbonate system

The carbonate system can be characterized when at least two of its parameters are known (Zeebe
and Wolf-Gladrow, 2001)). Table 4 presents the precision and accuracy of the different methods
used to measure these parameters and Table 5 shows the errors associated with the computation

of each parameter as a function of the pair of parameters measured. Measuring $p\text{CO}_2$ and pH continuously using *in situ* sensors is attractive as it could provide a continuous characterization of the carbonate chemistry (with real-time temperature and salinity data, see section 3.1.2). However, this pair of parameters leads to large uncertainties in the computation of the other parameters of the carbonate system (Table 5). It is therefore recommended to sample water in the experimental enclosures as well as in the external environment on a regular basis (e.g. once a week or more if an automated sampling technique is available). Sampled seawater can be used to independently measure parameters of the carbonate system such as A_T , C_T and/or pH. It should also be noted that A_T can be overestimated due to alkalinity associated with dissolved organic matter, leading to significant errors in the derived parameters (Hoppe et al., 2012). Koeve et al. (2012) recommended to over-determinate the CO_2 -system in experimental ocean acidification studies to safeguard against possibly large errors in estimated $p\text{CO}_2$. It is out of the scope of this paper to detail all analytical procedures and we refer to Dickson et al. (2007) for a comprehensive description of the protocols. Instruments for continuous measurement of C_T *in situ* have recently been developed (Liu et al., 2013). A_T can be measured continuously in the laboratory (Li et al., 2013), but it is not clear when a system that can be deployed on the sea floor will be available.

3.2 Optional sensors and parameters

3.2.1 Net calcification

Ocean acidification is detrimental to the net precipitation of calcium carbonate (CaCO_3) shells and skeletons by many marine organisms (Gazeau et al., 2013; Kroeker et al., 2013). Net calcification is therefore an important process in FOCE experiments involving calcifying organisms. It can be assessed by collecting organisms, measuring their buoyant weight in the laboratory and bringing them back in the enclosures. This approach is very time-consuming and involves a lot of manipulation of the organisms. Calcification of the entire community can be measured using the alkalinity anomaly technique (Smith and Key, 1975) when the units are closed. This technique makes the assumption that the production of 1 mole of CaCO_3 decreases total alkalinity (A_T) by 2 moles.

Since there is currently no total alkalinity sensor that can be deployed *in situ*, measuring the change in A_T must rely on discrete water samples collected during incubations. Calculating total alkalinity from pH and $p\text{CO}_2$ (the only two parameters that can be conveniently and continuously monitored) leads to unacceptably large errors ($\pm 88 \mu\text{mol kg}^{-1}$; Table 5). In most cases, the increase or decrease of A_T generated by the precipitation and dissolution of CaCO_3 is much lower than the accuracy that can be achieved using measurements of only pH and $p\text{CO}_2$.

Another non-destructive technique is to estimate net calcification rates from changes in C_T during incubations, assuming that C_T is only controlled by net community production (NCP) and net calcification. NCP can be estimated using changes in the concentration of dissolved oxygen (see

445 section 3.1.2) converted to carbon units (e.g. Gattuso et al., 1999). Since this method is based on the measurements of two parameters and on the use of a theoretical $C_T:O_2$ ratio, it provides estimates with a relatively high uncertainty compared to the alkalinity anomaly technique.

3.2.2 Nutrients

Modifications in the functioning of benthic communities as a response to ocean acidification has
450 the potential to significantly alter nutrient cycling and the role of these communities as source or sinks of various elements such as nitrogen and phosphate (Barry et al., 2011). In addition to the direct effects on rates of primary production and associated nutrient requirements, several laboratory experiments have demonstrated modifications of shallow sediment-water nutrient fluxes due to the impacts of ocean acidification on the macro-organisms responsible for bioturbation and bioirrigation
455 activities in the sediment (Barry et al., 2011). Therefore, the measurement of macronutrients (nitrate, ammonium and phosphate) changes during closed incubations appear of great interest. Sensors allowing the continuous measurement of nitrate *in situ* have been developed since the 1980's (Johnson et al., 1989). Available commercial sensors currently reach a precision and accuracy of respectively 0.5 and 3 $\mu\text{mol L}^{-1}$ (see <http://www.act-us.info/evaluations.php>). Although, this could be sufficient
460 for highly active communities, in most cases, laboratory measurements of discrete samples must be performed.

3.2.3 Light

FOCE systems deployed in the euphotic zone benefit from having photosynthetically active radiation (PAR) sensors inside the enclosures in order to relate the community metabolism to irradiance. A
465 surface PAR sensor is also useful to model the optical characteristics of the water column. Ultraviolet sensors are also optional sensors if UV is a parameter of interest at the study site and if partial confinement is achieved by UV-transparent material.

3.2.4 Camera

Imagery is not necessary for operating a FOCE system but it is can be useful for monitoring the
470 status of the system and make scientific observations. Cameras allow the non-destructive collection of data, such as changes in the density and composition of epifaunal and epifloral communities, as well as behavioral responses of conspicuous species. Ideally camera observations should be via continuous video but time-lapse photography can also be appropriate.

Very simple techniques can be employed to make inexpensive cameras. For example, the Linkspit™
475 is a single board camera with a very small foot print and several lens options. It comes with open source software and can easily be interfaced with Arduino™ computer boards. Another approach for additional performance is to use off-the-shelf security cameras which have additional features, such as pan and tilt, but are more costly. Both types of cameras require a simple housing for sub-

merged operations. Underwater cameras are available but the cost of a full-featured system can be prohibitive for FOCE experiments.

3.2.5 Flow measurements

Water flow influences virtually all aspects of the biology of marine benthic organisms. Hydrodynamics has wide-ranging roles. For example, it controls the availability of nutrients and food particles and also affects the dispersion of gametes (Vogel, 1994). Flow measurements can therefore be extremely useful in a FOCE system and it is crucial to maintain a flow regime in the enclosures similar to ambient. Even if the system is only partly open, the structure will limit natural flow patterns, affecting processes from molecular exchange rates to the transport of waste (i.e. mussel beds) or export of dead leaves (seagrass and macroalgae). This could influence the results obtained in the enclosures and limit upscaling of the results to natural ecosystems.

Flow can be monitored using instruments such as acoustic doppler current profiler (ADCP), acoustic doppler velocimeter (ADV) or cheaper instruments. Fans or water pumps integrated into the FOCE design can achieve the simulation of environmental flow rates. Replication of average flow rates is reasonably easy in areas with moderate flow environments. However maintaining very large flow rates is challenging. It is also an issue to maintain very slow flow rates due to the equilibration of the carbonate system in the enclosure (low pH spikes).

3.2.6 Sensor biofouling protection

For longer term experiments, biofouling protection is necessary to limit the growth of organisms that can alter sensor function. If possible, mechanical biofouling protection such as rotating brush or plate is preferable but often more expensive. Chemical biofouling protection such as copper or tributyl tin is commonly used in instruments such as CTDs, O₂ sensors and pH sensors but care must be taken not to place them within the enclosures where the chemicals could affect the organisms inside. When instruments with chemical biofouling protection are used, it is recommended to include them in a pumping system that pulls the water from the enclosures through the instruments and then disposes the water well away from the experimental area.

4 Past, current and planned FOCE implementations

The main characteristics of the past, current and planned FOCE systems are summarized in Table 1.

4.1 Deep FOCE (dpFOCE)

A FOCE system for studies of deep-sea benthic communities (designated dpFOCE; Fig. 4A) was developed by MBARI. The dpFOCE project, deployed at a depth of 880 m, was attached to the Monterey Accelerated Research System (MARS) cabled seafloor observatory in Monterey Bay, central

California, approximately 52 km from Moss Landing where the cable makes landfall. The system used a flume concept where the pH offset vs ambient seawater was monitored to maintain control of CO₂ enrichment within the experimental enclosure, while allowing access to natural seafloor sediments and suspended particulate material. Time-delay wings attached to either end of the dpFOCE enclosure allowed for injection of CO₂-rich seawater into either end depending on the direction of near-bottom currents, and provide sufficient time for full hydration of the injected CO₂-enriched seawater before entering into the experiment enclosure. Fans were integrated into the dpFOCE design to control water flow through the experimental enclosure and to simulate typical local-scale flow conditions. Multiple sensors (pH, CTD, ADV, and ADCP) used in conjunction with the fans and the enriched seawater injection system allowed the control loop software to achieve the desired pH offset. dpFOCE was connected to shore via the MARS cabled observatory, which provided power and data bandwidth. Enriched CO₂ seawater was produced from ambient seawater flowing under a pool of liquid CO₂ held in a small container near the dpFOCE enclosure; dissolution of liquid CO₂ into the seawater stream produced a CO₂-rich mixture used for injection into the dpFOCE enclosure. The dpFOCE system operated over 17 months and verified the effectiveness of the design hardware and software (Kirkwood et al., 2011). dpFOCE has performed a number of long term (4 weeks) pH control tests and has also proven to be an ideal platform to explore sub-lethal effects on animals that may be observed as changes in typical movement, posture and feeding rates (Barry et al., 2013).

4.2 Coral Proto FOCE (cpFOCE)

A shallow water FOCE system that could be deployed in coral reef habitats was developed at the University of Queensland. The cpFOCE system used replicate experimental flumes to enclose sections of a coral reef and dose them with CO₂-enriched seawater using peristaltic pumps with computer controlled feedback loops to maintain a specified pH offset from ambient conditions (Fig. 4B). The system was powered by solar and wind energy and the data was transmitted to a nearby laboratory for real time monitoring and data management (Marker et al., 2010). A cpFOCE enclosure had forward and rear flow conditioners on either end to accommodate bidirectional ocean currents. The openings were placed parallel to the dominant axis of tidal currents over the reef flat, and each enclosure was anchored with sand stakes. The flow conditioners were attached to maximize turbulence and to provide passive mixing of the CO₂ enriched seawater. Four of the tubes in the flow conditioners furthest from the enclosure had small holes along their length through which low pH water was pumped to dispense it evenly along the entire width and height of the conditioner. The cpFOCE system was deployed at Heron Island (Great Barrier Reef) to investigate the response of coral communities to ocean acidification (Kline et al., 2012) and an 8 month duration experiment was performed.

4.3 European FOCE (eFOCE)

545 The European FOCE (eFOCE; <http://efoce.eu>) is currently in the initial deployment stage and comprises two enclosures (control and experimental) as well as a surface buoy housing the electronics and pumps to produce CO₂-enriched water (Fig. 4C). The system is powered by solar and wind energy. Data are sent to the nearby laboratory and can be monitored on the internet. The eFOCE system is currently deployed in the bay of Villefranche-sur-mer (France) at about 12 m depth and
550 300 m offshore. The eFOCE project has been developed to investigate the long-term effects of acidification on benthic marine communities of the North West Mediterranean Sea, especially *Posidonia* seagrass beds. Over a 3-year period, the aim of the project is to perform a relatively long (> 6 months) experiment.

4.4 Shallow water FOCE (swFOCE)

555 In collaboration with Hopkins Marine Station and the Center for Ocean Solutions, MBARI is developing a swFOCE system to examine the effects of ocean acidification on shallow subtidal communities in central California. swFOCE will use a shore station for the seawater control system and production of CO₂-enriched seawater, and will also use an existing cabled observational and research platform to connect the swFOCE node. Initially, two swFOCE enclosures will be installed
560 at a depth of 15 m, approximately 250 m offshore from Hopkins Marine Station. The nearby node of the cabled observatory (Kelp Forest Array) has instruments to monitor local currents, temperature, pH, and O₂ in real-time, as a cabled observatory platform for scientific research.

4.5 Antarctic FOCE (antFOCE)

The first polar FOCE, antFOCE, experiment was proposed and awarded funding in November of
565 2012, followed by design and concept work in 2013 (Fig. 5) and engineering tests before deployment in 2014. The antFOCE units will be placed on the seabed near Casey Station, Eastern Antarctica (2 control experimental enclosures and 2 high CO₂/low pH experimental enclosures). One of the difficulties with deploying FOCE infrastructure in a polar region will be both sea- and fast-ice. To circumvent issues with ice, scientific divers will deploy each unit through the sea-ice early in the
570 Antarctic summer field season and the units will be retrieved in open water conditions late in the summer. Connecting the sea-floor units to topside power (through sea-ice or open water) will be achieved with a purpose designed heated sea-ice buoy to avoid land, fast-ice and freezing of the seawater in the in/out flow.

5 Future developments

575 As FOCE technology matures, one will be increasingly faced with the decision of which communities to target and where to locate new FOCE experiments, both in terms of complementing existing

FOCE research and expanding into areas of particular concern including regions of high biodiversity, providing key economic, cultural and/or ecosystem services, or particularly sensitive. Key locations could also be identified in order to benefit from established infrastructure and ocean acidification monitoring programs. While ocean acidification is of global concern, upwelling regions, coral reefs and polar areas are especially sensitive to ocean acidification (Gattuso et al., 2011) and are therefore good candidates for FOCE experiments.

Areas of particular difficulty for FOCE experiments include regions of heavy wave action, large tidal currents, rapid flow and heavily polluted, disturbed or unstable sediments. To increase the likelihood of success for future FOCE experiments we recommend partnering with marine science institutes having the multi-disciplinary expertise and infrastructure necessary to undertake such activities.

The ocean acidification community recently emphasized the need to investigate the combined effects of ocean acidification and other environmental drivers (Hoegh-Guldberg and Bruno, 2010; Boyd, 2011). Two other major global drivers are ocean warming and the spreading of hypoxic zones where the concentration of dissolved oxygen is lower than $60 \mu\text{mol kg}^{-1}$ (Hofmann et al., 2011). The combination of global warming, ocean acidification and hypoxia can have additive, synergistic or antagonistic effects on organisms performances (Boyd and Hutchins, 2012), advantaging or disadvantaging some species or group of species (e.g. calcifiers, fleshy autotrophs) to the detriment of others, affecting the distribution of species and ultimately leading to ecosystems shifts. For example, in tropical regions, the coincidence of warming and acidification is expected to cause shifts from coral reefs to seagrass- and seaweed-dominated ecosystems (e.g. Diaz-Pulido et al., 2011; Fabricius et al., 2011). In temperate areas, the same drivers are expected to cause shifts from forests and meadows of perennial algae to mats of ephemeral and opportunistic algae such as turfs (Connell and Russell, 2010).

Very few experiments have considered warming, acidification and hypoxia together and all were performed in the laboratory. To date, no FOCE experiment has controlled a parameter other than the carbonate system. While FOCE systems are being developed, deployed and data analyzed, it is important to develop the next generation of FOCE systems that should be able to manipulate multiple variables. For example, to simulate warming and hypoxia as offsets from ambient values.

Manipulating the temperature of underwater open-top enclosures seems unrealistic because it would require large amounts of energy due to the high thermal conductivity of seawater, the “infinite” thermal capacity of the ocean (at the scale of a FOCE system) and the enhanced outflow of seawater at the top of the enclosure due to the increased buoyancy of warmer water. Temperature control would therefore require enclosing seawater much more than the current FOCE systems do. Early calculations suggest that simultaneous control of pH and temperature can be accomplished, with closed enclosures of 0.25 m^3 flushed once every hour, and higher operational electrical costs (Mahacek, unpublished data). Cross flow heat exchange techniques can be used to significantly

reduce the heating energy requirement.

615 Hypoxia can be simulated with the injection of O₂ deprived seawater (e.g. 60 $\mu\text{mol kg}^{-1}$). O₂ can
be decreased in an intermediary reactor by physical outgassing, through the injection of N₂ (g), or by
chemical scavenging through the injection of sulfite ions. Although toxic, sulfites rapidly react with
O₂ to produce sulfate ions (Wong and Zhang, 1992). Surface seawater O₂ concentration is about
230 $\mu\text{mol kg}^{-1}$ (at salinity = 35 and temperature = 20 °C) and the depletion to 60 $\mu\text{mol kg}^{-1}$ will
620 generates approximately 170 $\mu\text{mol kg}^{-1}$ sulfate ions, which is negligible compared to the natural
seawater concentration (ca. 28 mmol kg^{-1} at salinity 35). Unlike for pCO₂ and temperature, the
concentration of dissolved oxygen can be easily increased to simulate preindustrial concentrations by
direct injection of O₂ (g) in the reactor. Designs for manipulating oxygen are underway at MBARI
and a future upgrade of the swFOCE system is planned in order to control the concentration of
625 dissolved oxygen, in line with the expected expansion of a dead zone in Monterey Bay.

6 Building a community of FOCE users: the xFOCE approach

xFOCE is an open source package of plans and software developed at MBARI to make the design
and fabrication of FOCE systems more accessible to a wide range of ocean acidification researchers
(<http://www.xfoce.org>; Kacey et al., 2013).

630 Developing new systems for *in situ* experiments can be expensive, and requires time and expertise
to develop. xFOCE provides reference designs at no cost to enable users to develop a simple appli-
cation relatively quickly, and to refine those designs as research questions evolve. The key elements
of xFOCE reference designs include modularity, robustness, ease of use, and adaptability. While it
is not possible to build a single solution suited to every possible FOCE experiment, the developers
635 goal has been to provide fundamental building blocks that are easily used and modified to suit many
configurations. Designs will include a system for delivering CO₂ enriched seawater, a modular ex-
perimental enclosure and anchoring system, a power distribution system for a cabled observatory, as
well as electronics and software for collecting data and controlling the FOCE instrument.

7 Overarching activities

640 A globally coordinated network of FOCE experiments in regions known to be particularly at risk
of increasing CO₂ absorption, from the tropics to the poles, in partnership with leading FOCE
technology specialists, will contribute the kind of community-scale information required to influence
ocean-research, -policy and -technology agenda's to better manage at-risk marine communities and
regions in the high-CO₂ future. In order to successfully build an efficient and sustainable long-term
645 FOCE network it will be useful to put into place a number of joint overarching activities alongside the
purely scientific work associated with each individual FOCE system. Examples of such activities are
capacity building, communication and effective management of the data that will emerge from the

network. These activities will need a strong collaborative effort among the various xFOCE partners and should be organized taking into account existing efforts and opportunities for coordination with other projects and initiatives. Experience from past multi-national projects such as the European Project on Ocean Acidification (EPOCA) has shown the added value of such activities, e.g. in terms of creating a collaborative work atmosphere and adding to the integrity and legacy of the project.

7.1 Capacity building and collaboration

Training and capacity building are of particular importance for the xFOCE network, especially during its initial build-up phase, due to the complex technology involved. Proper training and knowledge transfer is important for data quality assurance and comparability. It would be beneficial to plan for scientists and engineers within the network to visit one or several of the other FOCE set-ups in order to increase knowledge transfer, promote problem-solving and encourage opportunities of collaboration. This has been done on an ad-hoc basis so far, especially for engineers, but no specific funding source has been identified so far. If possible and practicable, it would also be valuable for scientists and students outside the network to visit FOCE facilities to get trained and initiate collaborations so as to increase the potential of widening the network and maximizing the use of the technique. Two workshops bringing together FOCE network partners have been organized in 2012 and 2013. The meetings brought together about 20 scientists and engineers and provided an opportunity to present recent progress and the next generation of systems, discuss difficulties encountered, common pitfalls and best practices, as well as overarching network activities such as data management and outreach. It is hoped that these annual meetings can continue to facilitate the development of the network.

7.2 Inter-comparison exercises

Inter-comparison exercises are an important means to achieve quality assurance and control at a network level. It would be advantageous for the FOCE community to organize inter-comparison exercises between the different FOCE units. Such exercises would allow comparisons of results emerging from the different systems and ensure data quality. No financial support has been identified for this activity so far.

7.3 Data management

The real-time data collection in FOCE experiments generates a relatively large amount of information. Large data sets are not unique to FOCE experiments and are effectively dealt with, for example by the ocean observing community. It is important to ensure robust data quality assurance through a common data policy and data reporting guidelines for all FOCE systems participating in the network. Care will be taken to ensure appropriate FOCE representation and integration with existing and emerging efforts on the compilation and archiving of ocean acidification data, for example the data compilation of the Ocean Acidification International Coordination Centre (OA-ICC;

Nisumaa et al., 2010, <http://www.iaea.org/ocean-acidification/page.php?page=2195>;), and through participation in expert workshops. For example, FOCE users were represented at the first international workshop on the management of ocean acidification biological response data organized by the
685 OA-ICC in 2014 (<http://tinyurl.com/oaicc-data-mtg>).

7.4 Dissemination and outreach

Communicating the goals and results of FOCE studies to interested stakeholders (e.g. scientists, policy makers, schools, news media, and the public) is an important activity for those involved in FOCE activities. FOCE experiments are charismatic and visually attractive. They can be used
690 to increase public attention and contribute to ocean and climate literacy. Several FOCE products are already available, including videos and animations (<http://efoce.eu/media-efoce/videos>; http://www.dailymotion.com/video/xvfv42_ocean-acidification_news?search_algo=2), fact sheets and a leaflet (<http://www.efoce.eu/media-efoce/documents>). Web sites for eFOCE and xFOCE are already available (<http://efoce.eu>; <http://www.xfoce.org>). A 52' documentary on FOCE systems in general
695 and eFOCE in particular (Mediterranean 2100 – towards a record acidity) was produced in 2013 by Com On Planet (<http://vimeo.com/56970910>).

Organizations and projects such as the Center for Ocean Solutions (<http://www.centerforoceansolutions.org>), the OA-ICC (<http://www.iaea.org/ocean-acidification>) and the Ocean Acidification International Reference User Group (<http://www.iaea.org/ocean-acidification/page.php?page=2198>) could
700 assist and facilitate several of the activities mentioned above.

8 Conclusions

All approaches available to investigate the effects of ocean acidification have benefits and limitations (Table 6) and there is not a single ideal approach. It is the combination of information collected in laboratory experiments, field observations (monitoring), CO₂ vents, laboratory mesocosms, FOCE,
705 and modeling that will allow to provide the needed mechanistic understanding and predictive power that is needed (Dupont and Pörtner, 2013).

FOCE systems are designed to assess the impact of ocean acidification, in isolation or in combination with other drivers, on biological communities. They overcome some of the drawbacks of laboratory experiments and of observations in locations naturally enriched in CO₂. It is expected
710 that the next generation of FOCE systems will include, in addition to pH, options for oxygen or temperature control. Bringing perturbation experiments from the laboratory to the field is extremely challenging. All current FOCE users have experienced setbacks due to engineering issues or failures¹. It is hoped that the present paper and the products of the xFOCE initiative will assist in the use

¹For example, IEB6 and IEB8 Impulse underwater connectors, first units of Seabird SBE 37 SMP-ODO, KC Denmark Multiple Water Sampler. More information is available from the authors.

and development of FOCE systems for studies of the response of marine communities to changing
715 ocean conditions.

Acknowledgements. The BNP Paribas Foundation is gratefully acknowledged for its support of the 2012 and 2013 xFOCE meetings and for supporting a 52' eFOCE documentary. Additional support for the 2013 meeting was provided by the French Embassy in Washington D.C. dpFOCE was supported by MBARI, cpFOCE by the Australian Research Council, the Pacific Blue Foundation, and the University of Queensland, eFOCE by the
720 BNP Paribas Foundation, CNRS and Université Pierre et Marie Curie-Paris 6, swFOCE by MBARI, the Center for Solutions, and Hopkins Marine Station, antFOCE by the Australian Research Council, the Antarctic Climate and Ecosystem CRC, MBARI, Australian Antarctic Division and University of Tasmania. The International Atomic Energy Agency is grateful for the support provided to its Environment Laboratories by the Government of the Principality of Monaco. E. Acain and M. Khamla kindly helped producing figure 1. The contribution
725 of the following individuals is gratefully acknowledged: E. Acain, J. Acain, S. Alliouane, R. Patrix and E. Tanguy. The comments and suggestions of S. Dupont and K. Yates significantly improved an earlier version of this paper.

References

- Ainsworth, E. and Long, S.: What have we learned from 15 years of free-air CO₂ enrichment (FACE)? A meta-analytic review of the responses of photosynthesis, canopy properties and plant production to rising CO₂, *New Phytol.*, 165, 351–371, 2005.
- Andersson, A. and Mackenzie, F.: Revisiting four scientific debates in ocean acidification research, *Biogeosciences*, 9, 893–905, 2012.
- Arnold, T., Mealey, C., Leahey, H., Miller, A., Hall-Spencer, J., Milazzo, M., and Maers, K.: Ocean acidification and the loss of phenolic substances in marine plants, *PLoS ONE*, 7, e35 107, 2012.
- Barry, J., Hall-Spencer, J., and Tyrrell, T.: In situ perturbation experiments: natural venting sites, spatial/temporal gradients in ocean pH, manipulative in situ p(CO₂) perturbations, in: *Guide to best practices for ocean acidification research and data reporting*, edited by Riebesell, U., Fabry, V., Hansson, L., and Gattuso, J.-P., pp. 123–136, Publications Office of the European Union, Luxembourg, 2010.
- Barry, J., Widdicombe, S., and Hall-Spencer, J.: Effects of ocean acidification on marine biodiversity and ecosystem function, in: *Ocean acidification*, edited by Gattuso, J.-P. and Hansson, L., pp. 192–209, Oxford University Press, Oxford, 2011.
- Barry, J., Buck, K., Lovera, C., Brewer, P., Seibel, B., Drazen, J., Tamburri, M., Whaling, P., Kuhnz, L., and Pane, E.: The response of abyssal organisms to low pH conditions during a series of CO₂-release experiments simulating deep-sea carbon sequestration, *Deep-Sea Res. Pt II*, 92, 249–260, 2013.
- Boatta, F., D'Alessandro, W., Gagliano, A., Liotta, M., Milazzo, M., Rodolfo-Metalpa, R., Hall-Spencer, J., and Parello, F.: Geochemical survey of Levante Bay, Vulcano Island (Italy), a natural laboratory for the study of ocean acidification, *Mar. Poll. Bull.*, 73, 485–494, 2013.
- Boyd, P.: Beyond ocean acidification, *Nat. Geosci.*, 4, 273–274, 2011.
- Boyd, P. and Hutchins, D.: Understanding the responses of ocean biota to a complex matrix of cumulative anthropogenic change, *Mar. Ecol.-Prog. Ser.*, 470, 125–135, 2012.
- Carpenter, S.: Large-scale perturbations: opportunities for innovation, *Ecology*, 71, 2038–2043, 1990.
- Ciais, P., Sabine, C., Bala, G., Bopp, L., Brovkin, V., Canadell, J., Chhabra, A., DeFries, R., Galloway, J., Heimann, M., Jones, C., Le Quéré, C., Myneni, R., Piao, S., and Thornton, P.: Carbon and other biogeochemical cycles, in: *Climate Change 2013: The Physical Science Basis. Contribution of Working Group I to the Fifth Assessment Report of the Intergovernmental Panel on Climate Change*, edited by Stocker, T., Qin, D., Plattner, G.-K., Tignor, M., Allen, S., Boschung, J., Nauels, A., Xia, Y., Bex, V., and Midgley, P., pp. 465–570, Cambridge University Press, Cambridge, 2013.
- Connell, S. and Russell, B.: The direct effects of increasing CO₂ and temperature on non-calcifying organisms: increasing the potential for phase shifts in kelp forests, *P. Roy. Soc. B-Biol. Sci.*, 277, 1409–1415, 2010.
- Diaz-Pulido, G., Gouezo, M., Tilbrook, B., Dove, S., and Anthony, K.: High CO₂ enhances the competitive strength of seaweeds over corals, *Ecol. Lett.*, 14(2), 156–162, 2011.
- Dickson, A.: The carbon dioxide system in seawater: equilibrium chemistry and measurements, in: *Guide to best practices for ocean acidification research and data reporting*, edited by Riebesell, U., Fabry, V., Hansson, L., and Gattuso, J.-P., pp. 17–40, Publications Office of the European Union, Luxembourg, 2010.
- Dickson, A. G., Sabine, C. L., and Christian, J. R.: *Guide to best practices for ocean CO₂ measurements*, PICES Special Publication, 3, 1–191, 2007.

- Dupont, S. and Pörtner, H.-O.: A snapshot of ocean acidification research, *Mar. Biol.*, 160(8), 1765–1771, 2013.
- 770 Egilisdottir, H., Noisette, F., Noël, L.-L., Olafsson, J., and Martin, S.: Effects of pCO₂ on physiology and skeletal mineralogy in a tidal pool coralline alga *Corallina elongata*, *Mar. Biol.*, 160, 2103–2112, 2013.
- Fabricsius, K. E., Langdon, C., Uthicke, S., Humphrey, C., Noonan, S., De'ath, G., Okazaki, R., Muehllehner, N., Glas, M. S., and Lough, J. M.: Losers and winners in coral reefs acclimatized to elevated carbon dioxide concentrations, *Nat. Clim. Change*, 1, 165–169, 2011.
- 775 Gamble, J.: Mesocosms: statistical and experimental design considerations, *Coast. and Estuar. Stud.*, 37, 188–196, 1990.
- Gattuso, J.-P. and Hansson, L.: Ocean acidification: background and history, in: *Ocean acidification*, edited by Gattuso, J.-P. and Hansson, L., pp. 1–20, Oxford University Press, Oxford, 2011.
- Gattuso, J.-P., Frankignoulle, M., and Smith, S. V.: Measurement of community metabolism and significance
780 of coral reefs in the CO₂ source-sink debate, *P. Natl Acad. Sci. USA*, 96, 13 017–13 022, 1999.
- Gattuso, J.-P., Lee, K., Rost, B., Schulz, K., and Gao, K.: Approaches and tools to manipulate the carbonate chemistry, in: *Guide to best practices for ocean acidification research and data reporting*, edited by Riebesell, U., Fabry, V., Hansson, L., and Gattuso, J.-P., pp. 41–52, Publications Office of the European Union, Luxembourg, 2010.
- 785 Gattuso, J.-P., Bijma, J., Gehlen, M., Riebesell, U., and Turley, C.: Ocean acidification: knowns, unknowns and perspectives, in: *Ocean acidification*, edited by Gattuso, J.-P. and Hansson, L., pp. 291–311, Oxford University Press, Oxford, 2011.
- Gazeau, F., Parker, L., Comeau, S., Gattuso, J.-P., O'Connor, W., Martin, S., Pörtner, H.-O., and Ross, P.: Impacts of ocean acidification on marine shelled molluscs, *Mar. Biol.*, 160, 2207–2245, 2013.
- 790 Hall-Spencer, J. M., Rodolfo-Metalpa, R., Martin, S., Ransome, E., Fine, M., Turner, S. M., Rowley, S. J., Tedesco, D., and Buia, M.-C.: Volcanic carbon dioxide vents show ecosystem effects of ocean acidification, *Nature*, 454, 96–99, 2008.
- Havenhand, J., Dupont, S., and Quinn, G.: Designing ocean acidification experiments to maximise inference, in: *Guide to best practices for ocean acidification research and data reporting*, edited by Riebesell, U., Fabry,
795 V., Hansson, L., and Gattuso, J.-P., pp. 67–80, Publications Office of the European Union, Luxembourg, 2010.
- Heffner, R. A., Butler IV, M. J., and Reilly, C. K.: Pseudoreplication revisited, *Ecology*, 77(8), 2558–2562, 1996.
- Hoegh-Guldberg, O. and Bruno, J.: The impact of climate change on the world's marine ecosystems, *Science*,
800 328, 1523–1528, 2010.
- Hofmann, G., Smith, J., Johnson, K., Send, U., Levin, L., Micheli, F., Paytan, A., Price, N., Peterson, B., Takeshita, Y., Matson, P., Derse Crook, E., Kroeker, K., Gambi, M., Rivest, E., Frieder, C., Yu, P., and Martz, T.: High-frequency dynamics of ocean pH: a multi-ecosystem comparison, *PLoS ONE*, 6, e28 983, 2011.
- 805 Hoppe, C. J. M., Langer, G., Rokitta, S. D., Wolf-Gladrow, D. A., and Rost, B.: Implications of observed inconsistencies in carbonate chemistry measurements for ocean acidification studies, *Biogeosciences*, 9, 2401–2405, 2012.

- Hurd, C., Cornwall, C., Currie, K., Hepburn, C., McGraw, C., Hunter, K., and Boyd, P.: Metabolically-induced pH fluctuations by some coastal calcifiers exceed projected 22nd century ocean acidification: a mechanism for differential susceptibility?, *Glob. Change Biol.*, 17, 3254–3262, 2011.
- Hurlbert, S. H.: Pseudoreplication and the design of ecological field experiments, *Ecol. Monogr.*, 54(2), 187–211, 1984.
- Johnson, K., Sakamoto-Arnold, C., and Beehler, C.: Continuous determination of nitrate concentrations in situ, *Deep-Sea Res. Pt A*, 36, 1407–1413, 1989.
- Kecy, C., Peltzer, E., Walz, P., Headley, K., Herlien, R., Maughan, T., Matsumoto, G., O'Reilly, T., Salamy, K., Shane, F., Lovera, C., Schofield, J., Kirkwood, W., Barry, J., and Brewer, P.: Open source instrumentation nodes for the greater oceanographic community, *OCEANS 2013 IEEE*, San Diego, pp. 1–7, 2013.
- Kirkwood, W., Peltzer, E., Walz, P., Headley, K., Herlien, B., Kecy, C., Maughan, T., O'Reilly, T., Salamy, K., Shane, F., Scholfield, J., and Brewer, P.: Cabled instrument technologies for ocean acidification research - FOCE (Free Ocean CO₂ Enrichment), in: *Underwater Technology (UT), 2011 IEEE Symposium on and 2011 Workshop on Scientific Use of Submarine Cables and Related Technologies*, 2011.
- Kline, D. I., Teneva, L., Schneider, K., Miard, T., Chai, A., Marker, M., Headley, K., Opdyke, B., Nash, M., Valetich, M., Caves, J. K., Russell, B. D., Connell, S. D., Kirkwood, B. J., Brewer, P., Peltzer, E., Silverman, J., Caldeira, K., Dunbar, R. B., Koseff, J. R., Monismith, S. G., Mitchell, B. G., Dove, S., and Hoegh-Guldberg, O.: A short-term in situ CO₂ enrichment experiment on Heron Island (GBR), *Sci. Rep.*, 2, 413, 2012.
- Koeve, W., Kim, H.-C., Lee, K., and Oeschlies, A.: Potential impact of DOC accumulation on fCO₂ and carbonate ion computations in ocean acidification experiments, *Biogeosciences*, 9, 3787–3798, 2012.
- Kroeker, K., Kordas, Rebecca Crim, R., Hendriks, I., Ramajo, L., Singh, G., Duarte, C., and Gattuso, J.-P.: Impacts of ocean acidification on marine organisms: quantifying sensitivities and interaction with warming, *Glob. Change Biol.*, 19, 1884–1896, 2013.
- Le Quéré, C., Andres, R. J., Boden, T., Conway, T., Houghton, R. A., House, J. I., Marland, G., Peters, G. P., van der Werf, G. R., Ahlström, A., Andrew, R. M., Bopp, L., Canadell, J. G., Ciais, P., Doney, S. C., Enright, C., Friedlingstein, P., Huntingford, C., Jain, A. K., Jourdain, C., Kato, E., Keeling, R. F., Klein Goldewijk, K., Levis, S., Levy, P., Lomas, M., Poulter, B., Raupach, M. R., Schwinger, J., Sitch, S., Stocker, B. D., Viovy, N., Zaehle, S., and Zeng, N.: The global carbon budget 1959–2011, *Earth Syst. Sci. Data*, 5, 165–185, 2013.
- Li, Q., Wang, F., Wang, Z., Yuan, D., Dai, M., Chen, J., Dai, J., and Hoering, K.: An automated spectrophotometric analyzer for rapid single-point titration of seawater total alkalinity, *Environ. Sci. Technol.*, 47, 11 139–11 146, 2013.
- Liu, X., Byrne, R., Adornato, L., Yates, K., Kaltenbacher, E., Ding, X., and Yang, B.: In situ spectrophotometric measurement of dissolved inorganic carbon in seawater, *Environ. Sci. Technol.*, 47, 11 106–11 114, 2013.
- Marker, M., Kline, D., Kirkwood, W., Headley, K., Brewer, P., Peltzer, E., Miard, T., Chai, A., James, M., and Schneider, K.: The coral proto-free ocean carbon enrichment system (CP-FOCE): Engineering and development, *OCEANS 2010 IEEE*, Sydney, pp. 1–10, 2010.
- Martin, S., Rodolfo-Metalpa, R., Ransome, E., Rowley, S., Gattuso, J.-P., and Hall-Spencer, J.: Effects of naturally acidified seawater on seagrass calcareous epibionts, *Biol. Lett.*, 4, 689–692, 2008.
- Middelboe, A. and Hansen, P.: High pH in shallow-water macroalgal habitats, *Mar. Ecol.-Prog. Ser.*, 338,

107–117, 2007.

- Morris, S. and Taylor, A.: Diurnal and seasonal variation in physico-chemical conditions within intertidal rock
850 pools, *Estuar. Coast. Shelf S.*, 17, 339–355, 1983.
- Nisumaa, A.-M., Pesant, S., Bellerby, R., Middelburg, J., Orr, J., Riebesell, U., Tyrrell, T., Wolf-Gladrow, D., and Gattuso, J.-P.: EPOCA/EUR-OCEANS data compilation on the biological and biogeochemical responses to ocean acidification, *Earth Syst. Sci. Data*, 2, 167–175, 2010.
- Oksanen, L.: Logic of experiments in ecology: is pseudoreplication a pseudoissue?, *Oikos*, 94, 27–38, 2001.
- 855 Orr, J.: Recent and future changes in ocean carbonate chemistry, in: *Ocean acidification*, edited by Gattuso, J.-P. and Hansson, L., pp. 41–66, Oxford University Press, Oxford, 2011.
- Price, N., Martz, T., Brainard, R., and Smith, J.: Diel variability in seawater pH relates to calcification and benthic community structure on coral reefs, *PLoS ONE*, 7, e43 843, 2012.
- Riebesell, U. and Tortell, P.: Effects of ocean acidification on pelagic organisms and ecosystems, in: *Ocean acidification*, edited by Gattuso, J.-P. and Hansson, L., pp. 99–121, Oxford University Press, Oxford, 2011.
- 860 Riebesell, U., Czerny, J., von Bröckel, K., Boxhammer, T., Büdenbender, J., Deckelnick, M., Fischer, M., Hoffmann, D., Krug, S., Lentz, U., Ludwig, A., Muche, R., and Schulz, K.: Technical Note: A mobile sea-going mesocosm system – new opportunities for ocean change research, *Biogeosciences*, 10, 1835–1847, 2013a.
- 865 Riebesell, U., Gattuso, J.-P., Thingstad, T., and Middelburg, J.: Arctic ocean acidification: pelagic ecosystem and biogeochemical responses during a mesocosm study, *Biogeosciences*, 10, 5619–5626, 2013b.
- Smith, S. V. and Key, G. S.: Carbon dioxide and metabolism in marine environments, *Limnol. Oceanogr.*, 20, 493–495, 1975.
- Stewart-Oaten, A. and Bence, J.: Temporal and spatial variation in environmental assessment, *Ecol. Monogr.*,
870 71, 305–339, 2001.
- Stewart-Oaten, A., Murdoch, W., and Parker, K.: Environmental impact assessment: "pseudoreplication" in time?, *Ecology*, 67, 929–940, 1986.
- Tamburri, M., Johengen, T., Atkinson, M., Schar, D., Robertson, C., Purcell, H., Smith, G., Pinchuk, A., and Buckley, E.: Alliance for coastal technologies: advancing moored pCO₂ instruments in coastal waters, *Mar. Technol. Soc. J.*, 45, 43–51, 2011.
- 875 Thresher, R., Tilbrook, B., Fallon, S., Wilson, N., and Adkins, J.: Effects of chronic low carbonate saturation levels on the distribution, growth and skeletal chemistry of deep-sea corals and other seamount megabenthos, *Mar. Ecol.-Prog. Ser.*, 442, 87–99, 2011.
- Tilman, D.: *Ecological experimentation: strengths and conceptual problems*, Springer-Verlag, New York, 1989.
- 880 Underwood, A.: On beyond BACI: sampling designs that might reliably detect environmental disturbance, *Ecol. Appl.*, 4, 3–15, 1994.
- van Vuuren, D. P., Edmonds, J., Kainuma, M., Riahi, K., Thomson, A., Hibbard, K., Hurtt, G. C., Kram, T., Krey, V., Lamarque, J.-F., Masui, T., Meinshausen, M., Nakicenovic, N., Smith, S. J., and Rose, S. K.: The representative concentration pathways: an overview, *Climatic Change*, 109, 5–31, 2011.
- 885 Vogel, S.: *Life in moving fluids: the physical biology of flow*, Princeton University Press, Princeton, 1994.
- Walz, P., Kirkwood, W., Peltzer, E., Hester, K., and Brewer, P.: Creating controlled CO₂ perturbation experiments on the seafloor- Development of FOCE techniques, *Oceans 2008 - MTS/IEEE Kobe Techno-Ocean*,

1-3, 750–753, 2008.

Wong, G. and Zhang, L.: Chemical removal of oxygen with sulfite for the polarographic or voltammetric
890 determination of iodate or iodide in seawater, *Mar. Chem.*, 38, 109–116, 1992.

Wootton, J., Pfister, C., and Forester, J.: Dynamic patterns and ecological impacts of declining ocean pH in a
high-resolution multi-year dataset, *P. Natl Acad. Sci. USA*, 105, 18 848–18 853, 2008.

Yates, K., Dufore, C., Smiley, N., Jackson, C., and Halley, R.: Diurnal variation of oxygen and carbonate system
parameters in Tampa Bay and Florida Bay, *Mar. Chem.*, 104, 110–124, 2007.

895 Yates, K. K. and Halley, R. B.: CO_3^{2-} concentration and pCO_2 thresholds for calcification and dissolution on
the Molokai reef flat, Hawaii, *Biogeosciences*, 3, 357–369, 2006.

Zeebe, R. E. and Wolf-Gladrow, D. A.: CO_2 in seawater: equilibrium, kinetics, isotopes, Elsevier, Amsterdam,
2001.

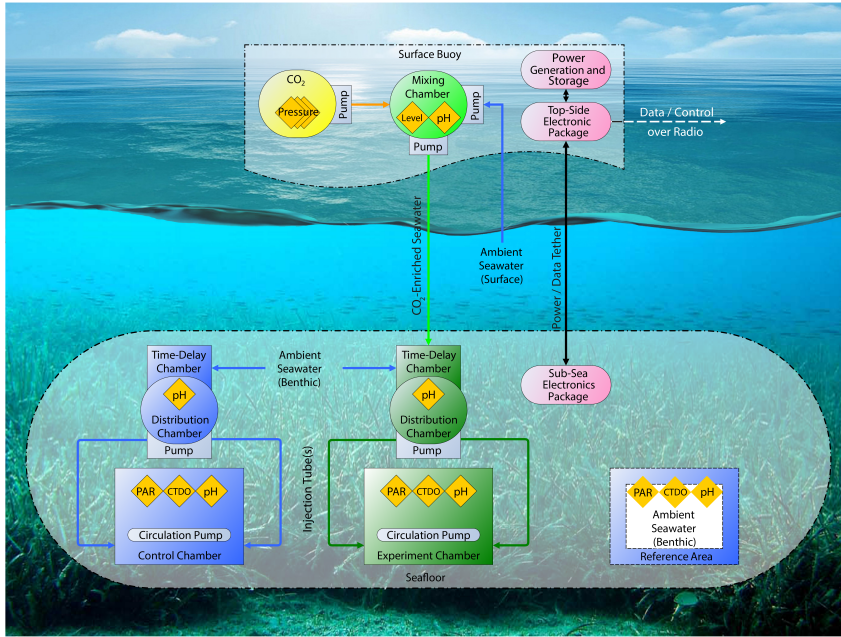


Fig. 1. Conceptual diagram of a FOCE system. The number of control, experiment and reference areas vary depending on the experimental design and budget. Additional sensors are also optional. PAR: photosynthetically active radiation; CTDO: conductivity, temperature, salinity, oxygen sensors. See the main text for definitions of the sub-components.

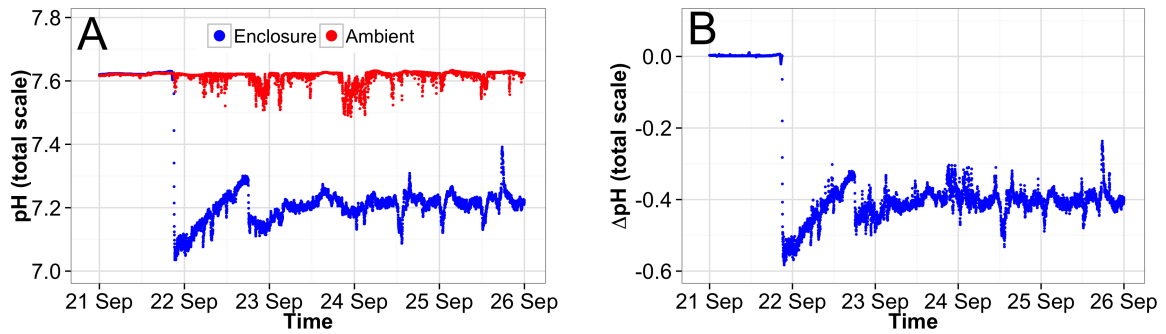


Fig. 2. pH regulation test performed in the frame of the dpFOCE project, targeting a pH offset of -0.4 unit.

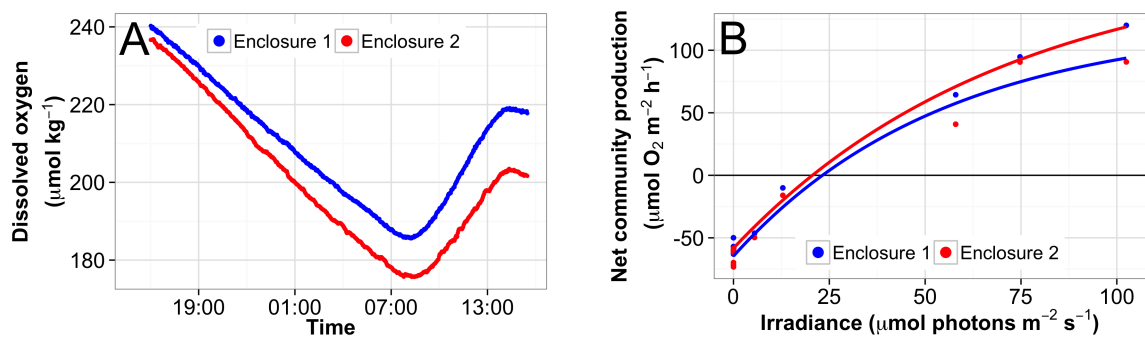


Fig. 3. Measurements of the community metabolism of a *Posidonia* seagrass bed in the northwest Mediterranean Sea performed in the frame of the eFOCE project. Oxygen variations (A) and photosynthesis-irradiance curves (B) during incubations performed in closed-chambers conditions.

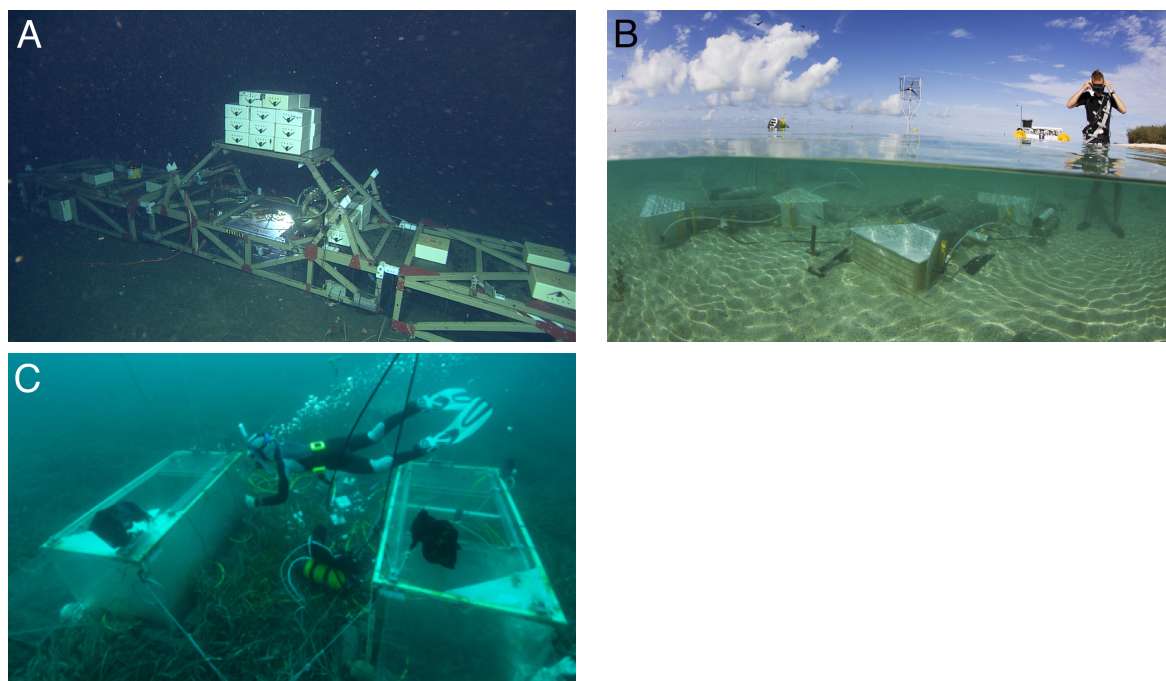


Fig. 4. A, deep-water FOCE (dpFOCE); B, Coral Proto FOCE (cpFOCE); C, European FOCE (eFOCE). Credits: A, MBARI; B, D. I. Kline (Scripps Institution of Oceanography); C, D. Luquet (CNRS-UPMC)

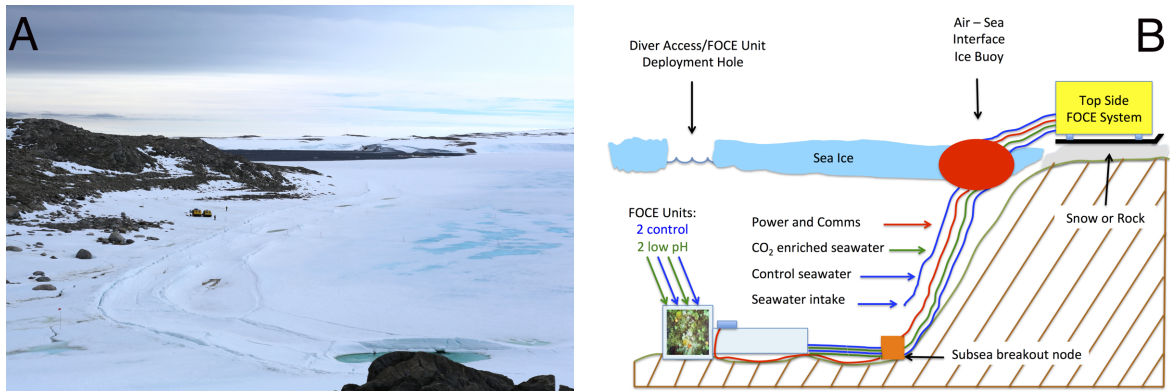


Fig. 5. A, antFOCE Site (O'Brien Bay, Antarctica); B, simplified sketch of the antFOCE system. Credits: A, G. Johnstone (AAD) and B, W. Kirkwood (MBARI) & J. Reeve (AAD).

Table 1. Design of past, current and planned FOCE systems.

	dpFOCE	cpFOCE	eFOCE	swFOCE	antFOCE
Location	North Eastern Pacific	Heron Island, Great Barrier Reef	NW Mediterranean Sea	North Eastern Pacific	Antarctica
Habitat	Deep-sea sediment	Coral reef flat	Seagrass meadow	Nearshore sand flat	Polar sediment
Time of operation	2009-2012	2009-2011	2013-present	2014	2014-2015
Depth (m)	890	3	12	15	20
Number of units	1	4	2	2	4
Duration	4 weeks	(1) 10 days; (2) 6 months	tbd	tbd	tbd
Dimension of experimental units (L × w × h in m)	1 x 1 x 0.5	1 x 0.25 x 0.25	2 x 1 x 1	2 x 0.5 x 0.5	2 x 0.5 x 0.5
Experimental design	Ambient and -0.45 pH offset	(1) ambient, -0.15 and -0.25 pH offsets, with a reference plot (2) 2 ambient and 2 with -0.25 pH offset, with a reference plot	Ambient, -0.3 pH offset, with a reference plot	Ambient and pH offset to be determined, with a reference plot	2 x ambient + 2 x -0.4 pH offset, with 2 reference plots
pH control	MBARI modified SBE18 pH sensor (6 each), metered addition of high-CO ₂ seawater	Seabird MBARI modified SBE18 pH sensors, metered addition of high-CO ₂ seawater	Seabird SBE18S pH sensors, metered addition of high-CO ₂ seawater	Seabird SBE18S sensors, metered addition of CO ₂ enriched seawater	Seabird SBE18S pH sensors and Durafet™ pH sensors, metered addition of high-CO ₂ seawater

Table 1. Continued.

	dpFOCE	cpFOCE	eFOCE	swFOCE	antFOCE
Other sensors and equipment	Seabird SBE 52 CTD with SBE 43 O ₂ sensor, Nortek Vector flow sensor (2 ea), RDI Workhorse ADCP, camera and lights	4 Seabird SBE 16+version 2 CTDs, RINKO Li-Cor LI-192 PAR sensors, Nortek Vector flow sensors	3 Seabird SBE 37 SMP-ODO CTDs with Seabird SBE 63 O ₂ optodes, 4 Li-COR LI-192 PAR sensors	Seabird SBE 52 CTD w/ SBE 43 O ₂ , flow sensor (FM6550), RDI Sentinel ADCP, Satlantic PAR-SER ICSW irradiance sensor, camera and lights	ADCP (NORTEK Aquadopp), TSG Seabird SBE 45), Anderaa 3835 O ₂ sensor, Li-Cor LI-190SA PAR sensor, Tidbit temperature sensors, GoPro camera
Temperature (°C)	3.7-5.1	20.3-27.5	13.5-24.4	9-14	-1.0 to +1.6
pH _T	7.609-7.634	7.9-8.3	8.024-8.140	7.6-8.2	tbd
pCO ₂ (µatm)	1014-1075	148-1800	339-462	250-1200	tbd
Total alkalinity (µmolkg ⁻¹)	2358-2374	2357-2560	2240-2420	2200	tbd

Table 2. Possible experimental designs of FOCE experiments.

	Single factor	Two factors
Orthogonal	-	Two levels of two factors require at least 4 units. Complete or partial replication possible.
Gradient	At least 2 levels (ambient and elevated CO ₂). Additional levels can be added. Complete or partial replication possible.	See orthogonal design above if each factor has two levels. The levels of parameters can be unequal in nested designs. For example 3 pH levels and 2 temperature levels (6 units required without replication). Complete replication possible but technically difficult to implement.
Scenarios	Same as above with CO ₂ levels corresponding to specific scenarios for the location.	The two factors are not manipulated in isolation. For example: present, year 2050 (medium change in pH and temperature), and year 2100 (large changes in pH and temperature).

Table 3. Initial change in pH performed (or planned) during the different FOCE experiments.

FOCE system	Timeframe	Rate of change	Time to reach targeted Δ pH
dpFOCE	18 month deployment with 1 month experiments	0.3 to 0.4 unit min ⁻¹	1 min
cpFOCE	8 month experiment	-0.1 unit every 20 days	2 months
eFOCE	Gradual + natural cycle	0.05 pH unit min ⁻¹	1 week
swFOCE	1 to 6 month	0.3-0.4 unit min ⁻¹	1 min
antFOCE	4 month experiment	0.3-0.4 unit min ⁻¹	1 min

Table 4. Precision and accuracy of the measurements of carbonate chemistry parameters based on various *in situ* or laboratory techniques. $p\text{CO}_2$ is in μatm , A_T and C_T are in $\mu\text{mol kg}^{-1}$. IRGA: infrared gas analyzer.

Parameter (method)	Precision	Accuracy	Reference
pH (<i>in situ</i> , potentiometric)	± 0.003	± 0.01	Peltzer (pers. obs.)
pH (laboratory, spectrophotometric)	± 0.001	± 0.005	Dickson et al. (2007)
$p\text{CO}_2$ (<i>in situ</i> , IRGA or colorimetry)	$\pm 5\text{-}10$	$\pm 7\text{-}8$	Tamburri et al. (2011)
$p\text{CO}_2$ (laboratory, IRGA)	± 1	± 2	Dickson et al. (2007)
A_T (laboratory, potentiometric titration)	± 1	± 2	Dickson et al. (2007)
C_T (laboratory, coulometer)	± 1.5	± 4	Dickson et al. (2007)

Table 5. Relative uncertainties in pH, total alkalinity (A_T in $\mu\text{mol kg}^{-1}$), dissolved inorganic carbon (C_T in $\mu\text{mol kg}^{-1}$) and partial pressure of CO_2 ($p\text{CO}_2$) resulting from the uncertainties (accuracies) shown in Table 4 (the *in situ* uncertainties are considered for pH and $p\text{CO}_2$). These relative uncertainties have been computed as described in Dickson (2010), assuming uncertainties in temperature and salinity *in situ* of 0.002°C and 0.001 , respectively.

Pair of parameters	$u\text{pH}$	uA_T	uC_T	$up\text{CO}_2$
pH - $p\text{CO}_2$	-	± 88	± 73	-
pH - A_T	-	-	± 7	± 11
pH - C_T	-	± 9	-	± 10
$p\text{CO}_2$ - A_T	± 0.007	-	± 5	-
$p\text{CO}_2$ - C_T	± 0.008	± 8	-	-
A_T - C_T	± 0.007	-	-	± 10

Table 6. Benefits and limitations of the five main approaches used to investigate the effects of ocean acidification. A 5 stage ranking is used: very high, high, medium, low and very low. Modeling approaches are not considered in this table.

Approach	Cost	Replicability	Ecological relevance
Laboratory experiments	Very low	Very high	Very low
Field observations (monitoring)	Medium	Very low	Very high
CO_2 vents	Low	Very low	Very high
Laboratory mesocosms	Medium	Medium	Medium
FOCE	High	Medium	High