

1 **Estimated stocks of circumpolar permafrost carbon with**
2 **quantified uncertainty ranges and identified data gaps**

3

4 **G. Hugelius¹, J. Strauss², S. Zubrzycki³, J.W. Harden⁴, E.A.G. Schuur^{5,6,7}, C.-L.**
5 **Ping⁸, L. Schirrmeister², G. Grosse², G.J. Michaelson⁸, C.D. Koven⁹, J.A.**
6 **O'Donnell¹⁰, B. Elberling¹¹, U. Mishra¹², P. Camill¹³, Z. Yu¹⁴, J. Palmtag¹ and P.**
7 **Kuhry¹**

8

9 ¹Department of Physical Geography and Quaternary Geology, Stockholm University, SE-106
10 91 Stockholm, Sweden

11 ²Alfred Wegener Institute Helmholtz Centre for Polar and Marine Research, Periglacial
12 Research Unit Potsdam, Telegrafenberg A43, 14473 Potsdam, Germany

13 ³Institute of Soil Science, Center for Earth System Research and Sustainability (CEN),
14 Universität Hamburg, Allende-Platz 2, 20146 Hamburg, Germany

15 ⁴U.S. Geological Survey, Menlo Park, CA 94025, USA

16 ⁵Department of Biology, University of Florida, Gainesville, FL 32611, USA

17 ⁶Center for Ecosystem Science & Society, Northern Arizona University, Flagstaff, AZ 86001,
18 USA

19 ⁷Biological Sciences, Northern Arizona University, Flagstaff, AZ 86001, USA

20 ⁸Palmer Research Center, University of Alaska Fairbanks, 1509 S. Georgeson Drive, Palmer,
21 AK 99645, USA

22 ⁹Lawrence Berkeley National Lab, Berkeley, CA, USA

23 ¹⁰Arctic Network, National Park Service, 4175 Geist Rd. Fairbanks, AK 99709, USA

24 ¹¹CENPERM (Center for Permafrost), Department of Geosciences and Natural Resource
25 Management, University of Copenhagen, Øster Voldgade 10, 1350 Copenhagen, Denmark

26 ¹²Environmental Science Division, Argonne National Laboratory, 9700 South Cass Avenue,
27 Argonne, IL 60439, USA

1 ¹³Earth and Oceanographic Science Department and Environmental Studies Program,
2 Bowdoin College, Brunswick, ME 04011, USA

3 ¹⁴Department of Earth and Environmental Sciences, Lehigh University, 1 West Packer
4 Avenue, Bethlehem, PA 18015, USA

5 **Abstract**

6 Soils and other unconsolidated deposits in the northern circumpolar permafrost region store
7 large amounts of soil organic carbon (SOC). This SOC is potentially vulnerable to
8 remobilization following soil warming and permafrost thaw, but SOC stock estimates were
9 poorly constrained and quantitative error estimates were lacking. This study presents revised
10 estimates of permafrost SOC stocks, including quantitative uncertainty estimates, in the 0 to 3
11 m depth range in soils as well as for sediments deeper than 3 m in deltaic deposits of major
12 rivers and in the Yedoma region of Siberia and Alaska. Revised estimates are based on
13 significantly larger databases compared to previous studies. Despite this there is evidence of
14 significant remaining regional data gaps. Estimates remain particularly poorly constrained for
15 soils in the High Arctic region and physiographic regions with thin sedimentary overburden
16 (mountains, highlands and plateaus) as well as for deposits below 3 m depth in deltas and the
17 Yedoma region. While some components of the revised SOC stocks are similar in magnitude
18 to those previously reported for this region, there are substantial differences in other
19 components, including the fraction of perennially frozen SOC. Upscaled based on regional
20 soil maps, estimated permafrost region SOC stocks are 217 ± 12 and 472 ± 27 Pg for the 0 to 0.3
21 m and 0 to 1 m soil depths, respectively ($\pm 95\%$ confidence intervals). Storage of SOC in 0 to
22 3 m of soils is estimated to 1034 ± 150 Pg. Of this, 34 ± 16 Pg C is stored in poorly developed
23 soils of the High Arctic. Based on generalised calculations, storage of SOC below 3 m of
24 surface soils in deltaic alluvium of major Arctic rivers is estimated to 91 ± 52 Pg. In the
25 Yedoma region, estimated SOC stocks below 3 m depth are 181 ± 54 Pg, of which 74 ± 20 Pg is
26 stored in intact Yedoma (late Pleistocene ice- and organic-rich silty sediments) with the
27 remainder in refrozen thermokarst deposits. Total estimated SOC storage for the permafrost
28 region is ~ 1300 Pg with an uncertainty range of ~ 1100 to 1500 Pg. Of this, ~ 500 Pg is in non-
29 permafrost soils, seasonally thawed in the active layer or in deeper taliks, while ~ 800 Pg is
30 perennially frozen. This represents a substantial ~ 300 Pg lowering of the estimated
31 perennially frozen SOC stock compared to previous estimates.

32

1 **1 Introduction**

2 As permafrost warming and thaw occurs, large pools of soil organic carbon (SOC) that were
3 previously protected by sub-zero temperatures may become available for mineralization,
4 leading to increased greenhouse gas fluxes to the atmosphere (Schuur et al., 2008).
5 Incorporating permafrost related soil processes into Earth System Models (ESMs) has
6 demonstrated that permafrost C and associated climate feedbacks have been underestimated in
7 previous modelling studies and that high-latitude soil processes may further accelerate global
8 warming (Koven et al., 2011; Schaefer et al., 2011; Burke et al., 2012; Schneider von
9 Deimling et al., 2012).

10 At high latitudes, low soil temperatures and poor soil drainage have reduced decomposition
11 rates of soil organic matter (SOM) (Davidson and Janssens, 2006). Over millennial
12 timescales, processes such as cryoturbation, accumulation of peat and repeated deposition and
13 stabilization of organic-rich material (alluvium, proluvium, colluvium or wind-blown
14 deposits) have led to accumulation of permafrost SOC in mineral soils, peat deposits (organic
15 soils), silty late-Pleistocene syngenetic organic- and ice-rich deposits (Yedoma), deltaic
16 deposits and other unconsolidated Quaternary deposits (e.g. Ping et al., 1998; Tarnocai and
17 Stolbovoy, 2006; Schirrmeister et al., 2011a; 2011b; Ping et al., 2011; Strauss et al., 2012).
18 Using the Northern Circumpolar Soil Carbon Database (NCSCD), a digital soil map database
19 linked to extensive field-based SOC storage data, Tarnocai et al. (2009) estimated the 0 to 0.3
20 m and 0 to 1 m SOC stocks in the northern circumpolar permafrost region to be 191 Pg and
21 496 Pg, respectively. Based on limited field data, but in recognition of the key pedogenic
22 processes that transport C to depth in permafrost soils, Tarnocai et al. (2009) provided a first-
23 order SOC mass estimate for 0 to 3 m soil depth of 1024 Pg. This 0 to 3 m estimate was based
24 on 46 pedons in Canada and was not included into the spatially distributed NCSCD. Hugelius
25 et al. (2013a) recently compiled an updated pedon data set for soils in the northern
26 circumpolar permafrost region extending down to 2 m and 3 m depths (n=524 and 356,
27 respectively), which were incorporated into an updated NCSCDv2 and is now available to
28 improve characterization of the 1 to 3 m SOC stocks.

29 A first-order estimate of SOC stocks in Yedoma terrain of 450 Pg (Zimov et al., 2006) was
30 calculated from a small-scale map of Yedoma extent (Romanovskii, 1993), using generalised
31 data of Yedoma deposit thickness, massive ice content, organic C% and bulk density. This
32 estimate was recalculated to 407 Pg to avoid double counting of SOC stocks in the top 3 m of

1 deposits when included into a summative circumpolar estimate of Tarnocai et al (2009).
2 Schirrmeister et al. (2011a) suggested that Yedoma SOC stocks may be 25% to 50% lower
3 than previously reported because of overestimated mean bulk density value in Yedoma
4 deposits. Using newly compiled data on deposit thickness, spatial extent of thermokarst, bulk
5 density, segregated ice content and massive wedge-ice content, Strauss et al. (2013) provide
6 an updated estimate of 211 Pg SOC (with an uncertainty range from 58 to 371 Pg) stored in
7 permafrost sediments of the Yedoma region (including intact Yedoma and refrozen
8 thermokarst sediment with Holocene cover deposits of Siberia and Alaska, not including
9 active layer, thawed sediments underlying lakes and rivers or areas covered by deltaic or
10 fluvial sediments).

11 Based on field data from the Mackenzie River Delta, Tarnocai et al. (2009) estimated SOC
12 storage in the deltaic deposits of seven selected Arctic river deltas to be 241 Pg. Since this
13 first-order estimate demonstrated the potential importance of deltaic permafrost deposits, new
14 knowledge has become available regarding deeper SOC stores in Arctic Deltas. Field-studies
15 from the Alaskan Beaufort Sea coast (Ping et al., 2011) and the Siberian Lena River Delta
16 (Schirrmeister et al., 2011b; Zubrzycki et al., 2013) provide new information on SOC stocks
17 in near-surface deltaic deposits. There is also additional information regarding the spatial
18 extent and depth of deltaic deposits (Walker, 1998; Aylsworth et al., 2000; Smith et al., 2005;
19 Johnston and Brown, 1965; Taylor et al., 1996; Schwamborn et al., 2002).

20 Tarnocai et al. (2009) provided a total estimate of circumpolar SOC storage in soils (0 to 3 m
21 depth), Yedoma and deltaic deposits of 1672 Pg, of which 1466 Pg is stored in permafrost
22 terrain. This is about twice as much C as what is currently stored in the atmosphere
23 (Houghton, 2007). While it is recognised that this pool of SOC stored in permafrost regions is
24 large and potentially vulnerable to remobilization following permafrost thaw, estimates are
25 poorly constrained and quantitative error estimates are lacking (Mishra et al., 2013). Tarnocai
26 et al. (2009) assigned qualitative levels of confidence for different components of the
27 permafrost region SOC stock estimate. In recognition of the limited field observations on
28 which estimates are based, estimates for SOC stocks stored in deep soil (1 to 3 m), Yedoma
29 and deltaic deposits were assigned the lowest degree of confidence.

30 The aim of this paper is to update and synthesise the current state of knowledge on permafrost
31 SOC stocks. We revise estimates of the permafrost SOC stocks for the 0 to 3 m depth range in
32 soils as well as for deeper sediments in deltaic and Yedoma region deposits. Compared to

1 previous studies (Tarnocai et al., 2009; Zimov et al., 2006), the number of individual field
2 sites or pedons available for calculations has increased by a factor of 11 for 1 to 2 m soils, a
3 factor of 8 for 2 to 3 m soils and deltaic alluvium and a factor of 5 for Yedoma region
4 deposits. The first ever spatially distributed, quantified estimates for the 0 to 3 m depth range
5 in soils are upscaled based on regional soil maps in the NCSCDv2. Estimates of 0 to 3 m SOC
6 stock are calculated by separating physiographic regions of thick and thin sedimentary
7 overburden, corresponding to lowland and highland areas, respectively (Heginbottom et al.,
8 1993; Brown et al., 2002). In recognition of limited soil development in some high latitude
9 regions (Horwath Burnham and Sletten, 2010), SOC stocks in thin soils of the High Arctic
10 bioclimatic zone are upscaled separately. A revised estimate of SOC stocks in deltaic deposits
11 is based on new field data and updated information to calculate the spatial extent and depth of
12 deltaic alluvium. For the Yedoma region, the estimate of Strauss et al. (2013) is recalculated
13 by implementing an updated methodology for estimating uncertainty ranges and removing
14 spatial overlap with SOC stored in surface soils. The different components of the permafrost
15 region SOC stocks are summarised and presented together with quantitative uncertainty
16 estimates. A primary goal of this study is to quantify uncertainties associated with permafrost
17 SOC stocks estimates, and to improve understanding of the permafrost SOC pool size and
18 distribution for model simulations of the permafrost-carbon feedback on the climate system.

19

20 **2 Methods**

21 Below we present a summary of methods used to obtain our estimates. More detailed
22 descriptions of methods, including the datasets used for different calculations, are available in
23 the online supplemental material.

24 **2.1 Calculating 0 to 3 m SOC stocks**

25 Calculation of SOC stocks (absolute amount of SOC reported as either kg or Pg SOC) based
26 on thematic soil maps is done in three steps (Hugelius, 2012). First, the SOC storage (SOC
27 amount per area unit, given in kg C m^{-2}) for individual pedons (a pedon is a three-
28 dimensional body of soil as sampled, described and classified in soil studies) is calculated to
29 the selected reference depths. Second, the pedon data are grouped into suitable thematic
30 upscaling classes, and mean SOC storage (with confidence intervals) for each class and
31 reference depth is calculated. Finally, the mean SOC storage of each class is multiplied with

1 estimates of the areal coverage of thematic upscaling classes to calculate total SOC stocks
2 (including uncertainty ranges) for different classes and reference depths.

3 For this study, SOC stocks were estimated separately for the 0 to 0.3 m, 0 to 1 m, 1 to 2 m and
4 2 to 3 m depth ranges using the NCSCDv2. The NCSCDv2 is a polygon-based digital
5 database adapted for use in Geographic Information Systems (GIS), which has been compiled
6 from harmonised national or regional soil classification maps. Map data on soil coverage have
7 been linked to pedon data with SOC storage from the northern permafrost regions to estimate
8 geographically upscaled total SOC stocks (Hugelius et al., 2013b).

9 The SOC stocks estimates for the 0 to 0.3 m and 0 to 1 m depth ranges were calculated
10 separately in each NCSCDv2-region (i.e., Alaska, Canada, Contiguous USA, Europe,
11 Greenland, Iceland, Kazakhstan, Mongolia, Russia and Svalbard) following the methodology
12 of Tarnocai et al. (2009) but using the revised and gap-filled datasets described by Hugelius et
13 al. (2013a; 2013b). Separate SOC stock estimates were calculated for the High Arctic region.
14 Outside the High Arctic, estimates of 1 to 3 m SOC stocks are based on a geographical
15 subdivision following physiography. This spatial subdivision was chosen because it is
16 expected to reflect different important pedogenic processes occurring across the studied
17 region. Pedons and mapped soil areas in the northern circumpolar permafrost region were
18 separated following physiographic regions of thick and thin sedimentary overburden (Fig. 1;
19 see Heginbottom et al., 1993). Areas of thick sedimentary overburden are described as “areas
20 of lowlands, highlands and intra- and inter-montane depressions characterised by thick
21 overburden, wherein ground ice is expected to be generally fairly extensive” (Heginbottom et
22 al., 1993). Areas of thin sedimentary overburden are described as “areas of mountains,
23 highlands, and plateaus characterised by thin overburden and exposed bedrock, where
24 generally lesser amounts of ground ice are expected to occur” (Heginbottom et al., 1993).

25 The upscaled SOC stock estimates for the 0 to 0.3 m and 0 to 1 m depth ranges were
26 calculated separately for each soil order, following USDA Soil Taxonomy (Soil Survey Staff,
27 1999), within the separate NCSCDv2-regions. Permafrost-affected soils (Gelisol soil order)
28 are further differentiated for upscaling into its three suborders: Turbels (cryoturbated
29 permafrost soils), Histels (organic permafrost soils) and Orthels (non-cryoturbated
30 permafrost-affected mineral soils).

31 For the 1 to 2 m and 2 to 3 m depth ranges, a reduced thematic resolution with aggregated
32 upscaling classes was used. Stocks were calculated separately for the Turbel, Histel and

1 Orthel suborders of the Gelisol soil order and for the Histosol soils order (organic soils
2 without permafrost). All remaining soil orders were grouped as non-permafrost mineral soils.
3 The SOC storage (kg C m^{-2}) values for the 0 to 0.3 m and 0 to 1 m depth ranges were based
4 on 1778 individual pedons from around the northern circumpolar permafrost region (mainly
5 from Gelisol and Histosol orders), which have been complemented with SOC data from
6 Batjes (1996) where data for non-permafrost soil orders was missing (this pedon dataset is
7 hereafter called pedon dataset 1). More detailed information regarding this pedon dataset,
8 including details regarding which soil orders were supplemented with information from
9 Batjes (1996), can be found in table S1 of the supplementary online materials. For further
10 details regarding the NCSCD GIS-database and the methods for pedon sampling and
11 calculation of 0 to 0.3 and 0 to 1 m SOC stocks, see Hugelius et al. (2013b). For the deeper
12 soil layers (1 to 2 m and 2 to 3 m depth ranges) a newly compiled pedon database which has
13 been integrated into the NCSCDv2 was used (Fig. 1; Table 1). From this pedon compilation
14 we included 518 pedons that extend down to 2 m and 351 pedons that extend down to 3 m
15 (this pedon dataset is hereafter called pedon dataset 2). Table 1 summarises the number of
16 individual deep pedons available from different geographical regions and areas of thick/thin
17 sedimentary overburden in pedon dataset 2. More detailed information regarding this pedon
18 dataset can be found in table S1 of the supplementary online materials.

19 **2.2 Calculating deltaic SOC stocks**

20 Deltaic SOC stocks in this study are estimated following the methodology that builds on that
21 of Tarnocai et al. (2009) who used data on the mean depth of alluvium, mean delta lake
22 coverage/depth and mean alluvium SOC density (kg C m^{-3}) from the Mackenzie River Delta
23 (Canada) combined with data on the spatial coverage of seven large Arctic river deltas. Here
24 we combined the data used by Tarnocai et al. (2009) with updated information (from
25 scientific literature and databases) on the areal extent of deltas, mean depth of alluvium, delta
26 lake coverage, permafrost extent and segregated ice content in deltaic deposits. The total
27 volume of alluvium for each delta was calculated from the mapped sub-aerial delta extents
28 and the mean depth of alluvial deposits, subtracting the volume that was estimated to be
29 occupied by massive ice and water bodies. To avoid double counting, the top 0 to 3 m of soil
30 were removed from the calculation. In addition, known Yedoma deposits located in the Lena
31 Delta were removed to avoid spatial overlap with estimates for this region. When the total
32 volume of alluvium was calculated, the total SOC stock of each delta was estimated using

1 field data of mean alluvium SOC density (kg C m^{-3}). In all cases, mean values from other
2 deltas were used when there was no direct data for any specific variable in a delta. Table 5
3 summarises all input data used to estimate deltaic alluvium volume and SOC stocks. More
4 detailed descriptions of calculations are available in the online supplemental material.

1 **2.3 Calculating permafrost SOC stocks in the Yedoma region**

2 For the purpose of these calculations, the Yedoma region was subdivided into areas of intact
3 Yedoma deposits (late Pleistocene ice- and organic-rich silty sediments) and permafrost
4 deposits formed in thaw-lake basins (generalised as thermokarst deposits) which may be
5 either mineral soils, lake sediment or peat deposits. Volumes of unfrozen sediment underlying
6 water bodies and areas covered by deltaic or fluvial sediments were excluded. Twenty-two
7 Yedoma and 10 thermokarst deposit profiles were studied and sampled from river or coastal
8 bluffs exposed by rapid thaw and erosion (Strauss et al., 2013). Total SOC stocks in intact
9 Yedoma and perennially frozen thermokarst deposits below 3 m are calculated based on
10 individual observations of: deposit thickness (n=20 and 8, respectively), organic C content
11 (weight %, n=682 and 219), bulk density (n=428 and 117), and wedge-ice content (volume %,
12 n=10 and 6). The upper 3 m of sediment were excluded to avoid spatial overlap with
13 estimates of storage in 0 to 3 m soils based on the NCSCDv2. For details regarding
14 calculations of the spatial extent of different sediments, data collection and spatial distribution
15 of field observations see Strauss et al. (2013). Because of high inherent (spatial) heterogeneity
16 and non-normal distributed input parameters, the SOC stock calculations are based on
17 bootstrapping techniques using resampled observed values (similar to Strauss et al., 2013).
18 The applied methodology differed from that of Strauss et al. (2013) in several ways. The
19 number of resampling steps for each parameter was connected to the original number of
20 observations of the different parameters deposit thickness, C%, bulk density, and wedge-ice.
21 We did 10,000 separate bootstrapping runs and the total mean SOC stock size estimate was
22 derived afterward for every bootstrapping run. This resulted in an overall mean value
23 calculated from 10,000 observation-based bootstrapping means. Because organic C% and
24 bulk density of individual sediment samples are correlated, paired values were used in the
25 resampling process. Computations were performed using R software (boot package) (R core
26 team, 2012).

27 **2.4 Estimating SOC stock uncertainties**

28 Spatial upscaling using mean values of classes from thematic maps, such as soil maps, builds
29 on the premise that an empirical connection between map classes and the investigated variable
30 can be established through point sampling (Hugelius, 2012). Sources of upscaling uncertainty
31 in such thematic mean upscaling can be divided into database uncertainty arising from

1 insufficient field-data representation to describe natural soil variability within an upscaling
2 class and spatial uncertainties caused by areal misrepresentation of classes in the upscaling
3 map (Hugelius, 2012). Database uncertainty can be estimated based on the standard error
4 (reflects variance and number of independent replicates) and the relative contribution towards
5 the total stock of each upscaling class. This procedure assumes that the available sample is
6 sufficiently replicated to accurately reflect the natural variability within a class. If this is not
7 the case, the uncertainty arising from this so-called representation error can be estimated.
8 Spatial errors in individual upscaling classes can be assessed if dedicated, comprehensive
9 ground truth datasets to assess map accuracy are available, which is not the case in this study.
10 All uncertainty estimates in this study assume that the spatial extent of different soil orders,
11 deltas and the Yedoma region within the northern circumpolar permafrost region are correctly
12 mapped.

13 Calculations of uncertainty ranges for the different depth ranges and regions of 0 to 3 m soil
14 SOC stocks and deltaic alluvium are based on the methodology described by Hugelius (2012),
15 modified to also include the estimated representation error in those cases where estimates for
16 one region were based on small statistical samples. The uncertainty ranges are 95%
17 confidence interval (CI) ranges calculated from the standard deviation (StD) and proportional
18 areal/volumetric contribution of each upscaling class. The relative contribution to total
19 uncertainty by individual soil classes is defined as the proportion of combined StD and
20 proportional areal/volumetric contribution of that class.

21 The uncertainty ranges for Yedoma region deposits are the 5th and 95th percentiles of
22 bootstrapped observations (based on the methodology of Strauss et al. (2013)). These ranges
23 are considered equivalent to 95% CI ranges. The uncertainty ranges of the different SOC
24 stock components are combined using a formula for additive error propagation of covarying
25 variables (Roddick, 1987). More detailed descriptions of all calculations, including formulas
26 and a schematic overview of uncertainty calculations (Fig. S1) are available in the online
27 supplemental material.

28 **2.5 Statistical tests of significance**

29 Because different pedon datasets were used to calculate 0 to 1 m SOC stocks (pedon dataset
30 1) and 1 to 3 m SOC stocks (pedon dataset 2), there was a concern that these two dataset may
31 not accurately reflect the same statistical populations (Hugelius, 2012). Therefore, the

1 circumpolar mean 0 to 1 m SOC storage (kg C m^{-2}) between the two databases was compared
2 using Student's t-test with $\alpha=0.05$ (test from parameters, software PAST v2.17b; Hammer et
3 al., 2001). These tests were performed at the reduced thematic resolution used to calculate
4 deeper SOC stocks. Because the individual pedon observations and coordinates are no longer
5 available for pedon dataset 1, the tests could not be done separately for the different
6 physiographic regions (mean, standard deviation and n values of pedon dataset 1 for the
7 separate regions are not known).

8 For each soil upscaling class (at reduced thematic resolution), SOC storage (kg C m^{-2}) in the
9 individual depth ranges (0 to 1 m, 1 to 2 m and 2 to 3 m) were also compared across
10 physiographic regions of thick and thin sedimentary overburden using a two tailed Student's
11 t-test with $\alpha=0.05$ (software PAST v2.17b).

12

13 **3 Results**

14 **3.1 Mean 0 to 3 m SOC storage and depth distribution in soil classes across** 15 **regions**

16 3.1.1 Mean pedon SOC storage used for upscaling

17 Table 2 summarises the SOC storage (kg C m^{-2}) and uncertainty ranges (95% CI) for the
18 different soil classes used in upscaling. More detailed information regarding the databases
19 used to calculate mean SOC storage of different soil upscaling classes in all depth ranges can
20 be found in table S1 of the online supplementary materials. In general, the highest mean SOC
21 storages are in the organic soils (Histosols and Histels), followed by Turbels, Orthels and non-
22 permafrost mineral soils. Organic soils and permafrost-affected soils also store more SOC
23 below 1 m depth (except Orthels in regions of thin sediment overburden). Storage of SOC in
24 poorly developed permafrost soils of the High Arctic is considerably lower than other
25 permafrost soils. Estimates for soils of the High Arctic and physiographic regions of thin
26 sedimentary overburden are associated with wide uncertainty ranges.

27 The mean SOC storage estimates used for upscaling (Tab. 2) are based on two different pedon
28 datasets (pedon dataset 1 above 1 m depth and dataset 2 for deeper soils). However, both
29 datasets have data for the top meter of soil. These two pedon datasets represent independent
30 samples for estimating SOC storage (kg C m^{-2}) in the top meter of soils in the northern

1 circumpolar permafrost region. If both datasets are assumed to be unbiased, representative
2 samples of SOC storage, they should provide similar estimates. Therefore, inter-comparisons
3 of these estimates are informative. Comparing the 0 to 1 m SOC storage (kg C m^{-2}) values
4 from the two pedon datasets region revealed that there are no significant differences between
5 the datasets for mean 0 to 1 m SOC storage (based on all circumpolar pedons) in the Orthel
6 and Histel classes (t-test, $p>0.05$). Turbels and non-permafrost mineral soils have significantly
7 higher SOC in pedon dataset 2 (t-test, $p<0.05$). Histosols have significantly lower SOC in
8 pedon dataset 2 (t-test, $p<0.05$).

9 3.1.2 Comparison of SOC storage across regions and depths

10 Pedon dataset 1 has no data below 1 m depth and for consistency in comparisons only pedon
11 dataset 2 is referred to regarding all descriptions or comparisons of SOC storage across
12 regions or depth distribution of SOC within soil classes. The vertical distribution of SOC
13 through the profile varies greatly between soil orders (Fig. 2). In most soil classes the upper 1
14 m of soil stores more SOC than the deeper depth ranges but for Histosols, the highest
15 estimated SOC storage is in the 1 to 2 m depth range (Figs. 2G and 2H). In Orthels in regions
16 of thin sediment overburden, non-permafrost mineral soils and soils of the High Arctic a large
17 fraction (30% to 50%) of total 0 to 3 m SOC is stored in the top-soil (upper 0.3 m; Figs. 2E,
18 2I, 2J and 2K). Outside of the High Arctic, organic soils, Turbels and Orthels in thick
19 sediment regions store ~50% or more of SOC below 1 m depth.

20 Statistical comparison of SOC storage between physiographic regions of thick and thin
21 sediment overburden shows significantly higher SOC in thick sediment regions across all
22 depth ranges for Orthels and for non-permafrost mineral soils in 2 to 3 m depth (Figs. 2E, 2F,
23 2I and 2J; t-test, $p<0.05$). At depths down to 2 m, Histosol SOC storage is significantly
24 higher in thin sediment regions (Figs. 2G and 2H; t-test, $p<0.05$). Other soil upscaling classes
25 show no significant differences between physiographic regions.

26 3.2 Upscaled soil area and SOC stocks across regions

27 The estimated soil area of the northern circumpolar permafrost region is $17.8 \times 10^6 \text{ km}^2$
28 (excluding exposed bedrock, glaciers and ice-sheets and water bodies). This also includes the
29 full areal extent of regions where permafrost coverage is non-continuous so that a significant
30 fraction of the area is not in permafrost terrain. Physiographic regions with thick sedimentary
31 overburden occupy 35% and regions with thin sedimentary overburden 65% of the soil area

1 (Table 3). The North American continent (including Greenland) accounts for 39% of the soil
2 area and Eurasia for 61% of the soil area.

3 Total estimated northern circumpolar permafrost region SOC stocks ($\pm 95\%$ CI) are 217 ± 12
4 Pg for the 0 to 0.3 m depth and 472 ± 27 Pg for the 0 to 1 m depth (Tables 3). Estimated deeper
5 SOC stocks are 355 ± 81 Pg for the 1 to 2 m depth and 207 ± 42 Pg for the 2 to 3 m depth (Table
6 2). The summarised SOC stocks for 0 to 2 m depth are 827 ± 108 Pg and for 0 to 3 m depth are
7 1034 ± 150 Pg.

8 Thick sediment areas have lower total SOC stocks than thin sediment areas in the 0 to 0.3 m,
9 0 to 1 m and 1 to 2 m depth ranges (corresponding to a significantly smaller areal coverage).
10 However, in the 2 to 3 m depth range the total SOC stocks are higher in areas of thick
11 sediments, reflecting the very low estimated SOC contents below 2 m depth for some soil
12 classes which have significant areal extent in thin sediment regions (i.e. Orthels and non-
13 permafrost mineral soils; Fig. 2 and Tab. S1). There is a clear trend of wider uncertainty
14 ranges in thin sediment regions, caused by variable mean SOC storage (Fig. 2) and a low
15 number of available pedons for this very large region (Tab. 1). Maps of estimated SOC
16 content (Fig. 3) show clear differences in estimated SOC stocks, with higher numbers in thick
17 sediment regions than in the thin sediment regions.

18 The High Arctic region occupies 6% of the northern circumpolar permafrost region and stores
19 an estimated 34 ± 16 Pg SOC in the 0 to 3 m depth range (3% of total permafrost region 0 to 3
20 m SOC stocks). Most of this is in the upper meter of the soil with 10 ± 3 and 24 ± 8 Pg SOC in
21 the 0 to 0.3 m and 0 to 1 m depth ranges, respectively. Estimates of SOC stocks in deeper soil
22 layers in the High Arctic are lower, 7 ± 5 and 3 ± 3 Pg SOC in the 1 to 2 m and 2 to 3 m depth
23 ranges, respectively.

24 Permafrost-affected soils dominate SOC storage in the permafrost region with 70% of total
25 stocks (Table 4). Turbels outside of the High Arctic region, which account for 31% of the soil
26 area, store 41% of total 0 to 3 m SOC stocks (Table 4), and is the single dominant upscaling
27 class across all depth ranges and regions (Table S1). In the 1 to 2 m depth range, the organic
28 soils (Histels and Histosols) contribute more to the total SOC stocks, due to higher mean SOC
29 storage in that depth interval (Fig. 2). Histosols are especially important in regions of thick
30 sedimentary overburden where the mean depth of peat deposits (data not shown) and mean
31 SOC stocks are greater. Outside of continuous permafrost covergae, non-permafrost mineral

1 soils cover 38% of the northern circumpolar permafrost region, but accounts for only 15% of
2 the SOC mass.

3 Estimates for permafrost soils are the most uncertain. For the 0 to 1 m SOC stock estimate,
4 Turbels, Orthels and Histels together account for 89% of the total estimated uncertainty (61%,
5 14% and 15% respectively). At greater depths, uncertainties increase further. Overall, the
6 Turbels introduces the most uncertainty to the SOC stock estimates across depth ranges,
7 especially at depths below 1 m. Turbels account for 54% to 89% and 72% to 90% of
8 upscaling uncertainty (1 to 2 m and 2 to 3 m depth ranges, respectively). The particularly
9 large uncertainties of Turbel SOC storage estimates in physiographic regions of thin
10 sedimentary overburden are caused by few available pedons that show large within-class
11 variability. The relative uncertainties of High Arctic soil SOC stocks are large. However,
12 these soils have low SOC stocks (0.2 to 4% of total permafrost region SOC stocks across
13 upscaling regions and depth ranges) and contribute little towards the uncertainty of the total
14 estimates. More detailed information regarding the total soil area, SOC stocks and relative
15 contribution towards the estimated uncertainty ranges of different soil upscaling classes in all
16 depth ranges can be found in table S1 of the online supplementary materials.

17 **3.3 SOC stocks below 3 m depth in deltaic deposits**

18 Table 5 summarises data sources, the different parameters used to estimate the volume and
19 SOC content of deltaic alluvium and calculated results for the individual deltas. The total
20 estimated area of major river deltas in the northern circumpolar permafrost region is 75,800
21 km². This estimate includes twelve deltas ranging in size from 500 to 32,000 km². The
22 combined estimated alluvium volume below 3 m depth in these deltas is ca. 3,500 km³ (stored
23 between 3 and 60 m depth, mean alluvium depth is 54 m). Field-based observations of
24 alluvium depth are very limited and estimates are based on only one observation for the Lena
25 River Delta and five different observations for the Mackenzie River Delta. Estimates for mean
26 alluvium SOC density are available from the literature for five different delta units and range
27 from 8.3 to 56.2 kg C m⁻³. For deltas where no direct observations are available, alluvium
28 depth and SOC content is estimated from the mean values of those deltas that have data.

29 Estimated SOC stocks in deltaic alluvium below 3 m depth are 91±52 Pg. Because of high
30 mean alluvium SOC density total stocks in the Mackenzie River Delta (34 Pg) are higher than
31 those of the Lena River Delta (23 Pg), which is considerably larger and accounts for 44% of

1 the total estimated volume of alluvium. The Yana River Delta stores an estimated 7 Pg and
2 alluvial deposits of the remaining nine deltas store the remaining 27 Pg (≤ 5 Pg each).
3 Between 51 and 92% (mean 84%) of deltaic alluvium is stored in permafrost. Estimated SOC
4 stocks in perennially frozen alluvium are 69 ± 38 Pg. For most of the deltas included in this
5 estimate, no field-observations of alluvium depth or SOC content are available. Calculated CI
6 intervals indicate that uncertainties arising from limited observations of alluvium depth (± 49
7 Pg) are greater than uncertainties from poorly estimated alluvium SOC density (± 18 Pg).

8 **3.4 Storage of permafrost SOC in the Yedoma region**

9 The combined area of the Yedoma core region in Siberia (Romanovskii, 1993) and Alaska
10 (Jorgenson et al., 2008) is 1,387,000 km². Of this 416,000 km² (30%) is considered intact
11 Yedoma and 775,000 km² (56%) is comprised of permafrost deposits that have previously
12 gone through thermokarst cycling (refrozen sediments accumulated in thaw-lake basins,
13 including mineral soil, lake sediment or peat deposits) (Grosse et al., 2013; Strauss et al.,
14 2013). Within this Yedoma core region, thawed sediments underlying lakes and rivers
15 (150,000 km²) and areas covered by deltaic or fluvial sediments (47,000 km²) are excluded
16 from calculations.

17 The estimated stocks of permafrost SOC below 3 m depth in the Yedoma region is 181 Pg
18 with an uncertainty range of 130 to 239 Pg (hereafter approximated to ± 54 Pg). Of this an
19 estimated 74 Pg with an uncertainty range of 55 to 94 Pg (hereafter approximated to ± 20 Pg)
20 is stored in intact Yedoma while 107 with an uncertainty range of 60 to 161 Pg (hereafter
21 approximated to ± 50 Pg) is stored in perennially frozen thermokarst basin deposits.

22 The estimated total stocks of permafrost SOC in the Yedoma region is 213 Pg with an
23 uncertainty range of 164 to 267 Pg (hereafter approximated to ± 52 Pg). Of this an estimated
24 83 Pg with an uncertainty range of 64 to 104 Pg (hereafter approximated to ± 20 Pg) is stored
25 in intact Yedoma while 130 Pg with an uncertainty range of 85 to 180 Pg (hereafter
26 approximated to ± 45 Pg) is stored in perennially frozen thermokarst basin deposits.

27

28 **4 Discussion**

29 This study presents updated estimates of SOC stocks in the northern circumpolar permafrost
30 region based on markedly improved databases. The study includes the first spatially

1 distributed quantification of 1 to 3 m SOC stocks as well as the first quantitative uncertainty
2 ranges for SOC stocks in this region. In recognition of the limited soil development in high
3 latitude areas with thin sediments, the High Arctic region was treated separately in upscaling.
4 Adding up SOC stocks in 0 to 3 m soils, deltaic deposits and Yedoma region permafrost
5 deposits for the northern circumpolar permafrost region results in an estimate of 1307 Pg with
6 an uncertainty range of 1140 to 1476 Pg (roughly ± 170 Pg). Of this, 999 Pg of SOC is stored
7 in permafrost terrain (defined as storage in Gelisols/High Arctic soils and in deposits below 3
8 m depth). The SOC stock in perennially frozen soil and sediment is estimated to be 822 Pg (or
9 63%) or less (assuming an active layer depth of 30 cm or more in all Gelisols and High Arctic
10 soils).

11 **4.1 Differences to previous estimates**

12 The methodological approach of this estimate is similar to that taken by Tarnocai et al. (2009)
13 who provided a previous depth-integrated estimate of permafrost region SOC stocks. Revised
14 databases and methodology lead to substantial reductions of estimated total SOC stocks (Tab.
15 6), especially below 3 m depth. There is a considerable reduction in estimates of SOC stored
16 in permafrost terrain and in permafrost.

17 The updated estimates of northern circumpolar permafrost region SOC stocks in 0 to 0.3 m
18 and 0 to 1 m depth are largely based on the same data as the equivalent estimates of Tarnocai
19 et al. (2009). Differences between estimates (+26 Pg and -24 Pg, respectively) are due to gap-
20 filling procedures and updating of the NCSCD spatial framework (see Hugelius et al., 2013a,
21 2013b) and to new SOC estimates for the High Arctic region. The updated pedon database
22 used to estimate SOC between 1 and 3 m depth includes spatial representation across the
23 northern circumpolar permafrost region and about a ten-fold increase in the number of pedons
24 compared to that of Tarnocai et al. (2009). While the relative changes in the total 0 to 3 m
25 SOC stocks are small, there are considerable differences between individual soil orders. The
26 revised estimates are considerably lower for Turbels and Histels but higher for Orthels,
27 Histosols and non-permafrost mineral soils (Tab. 6). This results in a 120 Pg reduction of
28 SOC stored in permafrost in the 0 to 3 m depth range compared to the previous estimate. Note
29 that the estimates of the fraction of SOC stored in permafrost are highly uncertain as they are
30 based on an assumption that the average active layer depth in all Gelisols is 0.3 m or more
31 (see Kuhry et al., 2013).

1 Using a subset of pedon dataset 2 and soil (sub)order coverage from the NCSCD, Harden et
2 al. (2012) estimated total northern Gelisol SOC stocks to be 1060 Pg, compared to 727 Pg in
3 this estimate. The major cause for this difference is that Harden et al. (2012) do not subdivide
4 the upscaling following physiographic regions, which leads to higher estimated mean SOC
5 storage in Gelisol soil orders for regions of thin sedimentary overburden.

6 In recognition of the limited soil development in high latitude areas with thin sediments, the
7 High Arctic region was treated separately in upscaling. A previous study estimated active
8 layer SOC stocks for this region to be 12 Pg (Horwath Burnham and Sletten, 2010), which
9 falls within current SOC estimates of 10 ± 3 Pg and 24 ± 8 Pg in the 0 to 0.3 m and 0 to 1 m
10 depth ranges, respectively.

11 The previous estimate of deltaic SOC stocks by Tarnocai et al. (2009) was extrapolated based
12 on field data from the Mackenzie River Delta only. The revised, substantially lower, estimate
13 presented here builds on this same basic methodology but with some additional sources of
14 data from the literature. The difference between estimates is mainly caused by lower estimates
15 of mean alluvium SOC density (kg C m^{-3}) when including new available data from the
16 Colville and Lena river deltas (Ping et al., 2011; Schirrmeister et al., 2011b; Zubrzycki et al.,
17 2013). There are smaller differences in the estimated total volume of deltaic alluvium. This is
18 calculated based on areal extent and depth of alluvium, accounting for the volume of water
19 bodies (assuming a mean water depth of 5 m) and volumetric massive ice content. While the
20 areal extent of deltas for the updated estimate is based on an entirely different source (Walker,
21 1998) and includes a larger subset of individual deltas, the difference in total estimated sub-
22 aerial delta surfaces is relatively small. The estimated depth of alluvium in deltas is also
23 similar to the original estimate. Tarnocai et al. (2009) consider all deltaic alluvium below 3 m
24 to be in permafrost and do not consider any reduced alluvium volume caused by occurrences
25 of massive ice. If no massive ice content is assumed in this study, the equivalent estimate
26 would increase from 91 ± 52 Pg to 98 ± 54 Pg.

27 The updated estimate of permafrost SOC storage below 3 m depth in the Yedoma region is
28 based on the same dataset as the estimate for the total permafrost SOC stocks in this region
29 developed by Strauss et al. (2013). Removing depth overlap with the 0 to 3 m soil estimate
30 resulted in a reduction from 213 Pg to 181 Pg. The substantial reduction compared to the
31 previous depth-integrated estimate by Tarnocai et al. (2009) is mainly caused by a twofold
32 reduction of estimated bulk density, a reduction of estimated deposit thickness, and different

1 assumptions regarding the characteristics of intact Yedoma compared to refrozen thermokarst
2 sediments (see Fig. 3 in Strauss et al. 2013).

3 **4.2 Distribution patterns of SOC stored in 0 to 3 m soil**

4 4.2.1 SOC distribution by regions

5 When compiling pedon dataset 2 for upscaling of SOC stocks in the 1 to 3 m depth range
6 Hugelius et al. (2013a) subdivided pedons and upscaled SOC stocks based on a continental
7 subdivision (North America vs. Eurasia) as opposed to the upscaling based on physiographic
8 regions used in this study. A first version of this study included both continental and
9 physiographic upscaling (Hugelius et al., 2014). This study is based only on physiographic
10 upscaling as we argue that this approach reflects a more accurate assessment of SOC
11 distribution than subdivision by continent. The physiographic regions reflect differences
12 between upland and lowland areas across the northern circumpolar permafrost region
13 (Heginbottom et al., 1993) and are better suited to reflect different soil types and important
14 pedogenic processes. This is also consistent with other studies that have utilised physiography
15 and its influence on soil drainage to upscale soil properties (Harden et al., 2003; Yi et al.,
16 2009). A map of mean SOC storage (Fig. 3) upscaled using physiography shows important
17 patterns that were lacking in continent based upscaling (Hugelius et al., 2014). For example,
18 in the 1 to 2 m depth range, mountainous regions in Siberia emerge as having low SOC stocks
19 below 1 m. This estimate upscaled based on physiographic regions reflects differences
20 between upland and lowland areas across the northern circumpolar permafrost region
21 (Heginbottom et al., 1993). In thin sediment areas (“areas of mountains, highlands, and
22 plateaus characterised by thin overburden and exposed bedrock”) we would generally expect
23 conditions to be less favourable for accumulation of large SOC stocks than in areas of thick
24 sediment overburden (“areas of lowlands, highlands and intra- and inter-montane depressions
25 characterised by thick overburden”). The overall upscaled SOC stock estimates follows this
26 pattern of higher stocks in thick sediment areas, but some individual soils classes do not. Our
27 estimates for thin sediment areas are characterised by large variability, poor pedon
28 representation, and wide uncertainty ranges (see 4.3.1 below). We emphasise that this
29 dichotomous subdivision into two distinct physiographic landscape types is not realistic at a
30 local scale where transitions are more discrete. For studies at finer scales we would not
31 recommend the use of this relatively coarse subdivision.

1 4.2.2 SOC distribution by soil types

2 In general, the permafrost soils and organic soils dominate 0 to 3 m SOC storage in the
3 northern circumpolar permafrost region, especially at depths >1 m. This is in accordance with
4 previous results from this region (e.g. Ping et al., 2008; Tarnocai et al., 2009) and reflects
5 current understanding of the processes that lead to accumulation of SOC in permafrost region
6 soils (cryoturbation, accumulation of peat and repeated deposition and stabilization of
7 organic-rich material).

8 Because of their substantial areal extent and high mean SOC storage (kg C m^{-2}), cryoturbated
9 mineral soils are important SOC reservoirs. Turbels south of the High Arctic region store 41%
10 of SOC stocks with 31% areal coverage (Tab. 4). There are no significant differences in mean
11 SOC storage between physiographic regions of thick and thin sedimentary overburden regions
12 but there is notable variability in the data at all depths. Especially in areas of thin sediment
13 overburden, low data availability (Tab. 1) combined with great natural variability leads to
14 wider relative uncertainty ranges of estimates.

15 The mean SOC storage (kg C m^{-2}) is highest in organic soils (Histosols and Histels; Tab. 2),
16 and these soils also contribute greatly to total SOC stocks (both classes store 14% each of 0 to
17 3 m SOC stocks with only 5% and 7% areal coverage, respectively). Regions dominated by
18 organic soils, such as the West Siberian Lowlands or the lower Mackenzie River basin, are
19 especially SOC-rich across depths (Fig. 3). There is relatively large variability in SOC storage
20 of organic soils across regions. Unexpectedly, the upper 2 m of Histosols in regions of thin
21 sediment overburden have significantly higher SOC storage than Histosols from thick
22 sediment areas (Fig. 2). Considering the low degree of replication for Histosols in areas of
23 thin sediment overburden ($n=8$), additional field observations are needed to further evaluate
24 this result. This high estimated mean SOC storage of Histosols in thin sediment regions is
25 heavily influenced by a few very SOC-rich pedons and should be interpreted with caution.

26 Mineral permafrost soils unaffected by cryoturbation (Orthels) differ greatly across regions.
27 In areas with recurring deposition and stabilization of organic-rich sediment (alluvium,
28 proluvium, colluvium or wind-blown deposits) very large SOC stocks have accumulated over
29 long timescales (Schirrmeister et al., 2011). In other cases, shallow, non-cryoturbated
30 permafrost soils in e.g. mountain regions store little SOC (Ping et al., 1998). In this study,
31 Orthels in regions with thin sediments (corresponding to upland or montane areas) store little

1 SOC while Orthels in regions with thick sediment have accumulated significant SOC stocks
2 down to 3 m depth (Fig. 2).

3 In regions of discontinuous permafrost cover (commonly in areas of boreal forest), a large
4 portion of the landscape is covered by non-permafrost mineral soils which also store
5 significant amounts of SOC. Non-permafrost mineral soils cover 38% of the total permafrost
6 region area and stores 15% of total 0 to 3 m SOC stocks. In the upper meter, upscaling is
7 based on the eleven different non-permafrost mineral soil orders mapped in the NCSCDv2.
8 Estimated mean SOC storage in this depth interval shows significant variability in estimates
9 with a range from 1.7 to 25.2 kg C m⁻² (Tab. 2). In the 1 to 2 m depth interval estimated SOC
10 storage is ~10 kg C m⁻² in both thick and thin sediment regions. This remains unchanged
11 below 2 m in thick sediment regions while there is significantly less SOC in thin sediment
12 regions. A large fraction of SOC in these latter soils is stored in the top-soil within O and A
13 horizons where high SOC storage may indicate accumulation of humified organic matter,
14 charcoal, or char-mediated sorption in fire-prone boreal forests. Beneath O and A soil
15 horizons, important mechanisms for stabilizing SOC in permafrost free mineral soils include
16 deep rooting, sorption of leached dissolved organic C to clay particles or formation of
17 complexes with iron and/or aluminium. Lower SOC storage in deeper horizons reflects that
18 these soils are less affected by C stabilization processes such as cryoturbation or repeated
19 deposition typically found in permafrost or organic soils. The very low storage in non-
20 permafrost mineral soils of region with thin sediments is due to influence from pedons in
21 alpine terrain with limited soil development where bedrock is typically encountered within the
22 upper 3 m.

23 **4.3 Estimated uncertainties and data gaps**

24 This study presents the first quantitative uncertainty ranges for estimates of SOC stocks in
25 northern circumpolar permafrost region. The widest uncertainty ranges are associated with
26 those same components that also Tarnocai et al (2009) identified as being most uncertain.
27 That study assigned low to very low confidence for estimates of SOC stocks stored in deep
28 soil (1 to 3 m), Yedoma region deposits and deltaic deposits.

29 For 0 to 3 m soils and deltaic deposits the uncertainty ranges were calculated based on within
30 class variability of pedons (or alluvial deposit thickness) and areal/volumetric coverage of
31 classes. For Yedoma region SOC stocks, the uncertainty ranges correspond to the 5th and 95th

1 percentiles of bootstrapped estimates. The former approach integrates all individual soil-
2 horizons to the pedon level and assumes a (log)normal data distribution while the latter allows
3 non-normality, but also differs in that it does not integrate individual sediment layers or
4 horizons at the site/pedon level. These updated estimates are based on collaborative databases
5 where efforts have been made to collect data from across regions and from different research
6 groups. Despite this, substantial regional data gaps remain such as in the High Arctic, central
7 Siberia and many river deltas.

8 4.3.1 Spatial distribution of pedons

9 The spatial distribution of pedons used to estimate SOC stocks in the 1 to 3 m depth range is
10 highly clustered (Fig. 1). For example, parts of Alaska and western Russia are well
11 represented, but there are significant data gaps in Central Asia, Scandinavia, Greenland,
12 Svalbard and Eastern Canada. There is a clear possibility that the available pedons are not
13 truly representative for those areas where field data are lacking. This source of uncertainty is
14 not addressed in this study but we acknowledge that adding more field-based data from under-
15 sampled regions could substantially improve estimates. A previous comparisons between
16 estimates of 0 to 1 m SOC stocks based on the NCSCD and local scale studies revealed
17 pronounced differences, especially for Turbels and organic soils (Kuhry et al., 2010). A way
18 to potentially address this source of uncertainty in future studies is to assess the upscaled
19 estimates against independent validation datasets. Such approaches could be applied across
20 scale to address uncertainties from site-scale to regional scales.

21 4.3.2 Regional uncertainties of estimates for 0 to 3 m soils

22 The estimates of SOC stocks in 1 to 3 m soils are based on a highly generalised upscaling
23 scheme. Pedons are grouped based on soil characteristics (defined by absence/presence of
24 permafrost, thick organic layers and cryoturbation) and mean SOC storage values are then
25 assigned to large geographical regions (physiographic regions of thick/thin sediments,
26 respectively). For the estimate of 0 to 1 m soils, a similar simplified scheme was applied to all
27 NCSCD regions except Alaska and Canada (Tarnocai et al., 2009). In Alaska and Canada,
28 SOC storage values were individually assigned to mapped soil series (Alaska) or soil names
29 (Canada) from national soil inventories. Because of these methodological differences, there
30 are some discrepancies across depths for estimates in Alaska and Canada, where 1 to 2 m or 2
31 to 3 m soil layers are sometimes estimated to hold more SOC than the upper meter of soils.

1 This applies to some areas in the western Hudson Bay Lowlands and parts of the Canadian
2 Arctic archipelago outside of the High Arctic zone. Clear trends of decreased SOC storage
3 with depth (Fig. 2) indicate that these vertical patterns in SOC storage are not realistic.

4 The upscaling approach applied here relies on the assumption that our pedon datasets are
5 accurate and unbiased samples of permafrost region soils (Hugelius, 2012). For some regions,
6 the degree of replication in individual soil classes is very low (Table 1). To correct for
7 potential errors arising from incomplete sample representation in regions of thin sedimentary
8 overburden and the High Arctic region the representation error was estimated and included in
9 the summative uncertainty ranges. The representation error of any class in an under-sampled
10 region is estimated by extracting the variability from repeated subsampling of larger samples
11 available from other regions. For example, we thus assume that Turbels in thick sediment
12 regions are roughly equally variable as Turbels in thin sediment regions.

13 In the High Arctic region, there is very limited pedon data available and the current estimate
14 is based on only eight pedons (six Orthels, one Histel and one Turbel), which were grouped
15 together as Gelisols for calculations. Because of low SOC stocks, this region does not
16 contribute much to the overall uncertainty of total estimates. However, due to the very limited
17 field data and the large degree of generalization in some High Arctic soil maps (e.g. Svalbard
18 and Greenland, see Hugelius et al., 2013b) these estimates must be regarded as preliminary
19 and highly uncertain. Storage of SOC in cryoturbated and organic soils is often highly
20 variable, and sample sizes of at least >30 is recommended (Hugelius, 2012). In the current
21 estimate of SOC below 1 m depth, there is very poor representation of Turbels for thin
22 sediment regions outside of the High Arctic (n=6 and 2 for the 1 to 2 m and 2 to 3 m depths,
23 respectively). Based on currently available data, we cannot provide robust estimates of SOC
24 storage in physiographic regions of thin sedimentary overburden or the High Arctic region.
25 This is also reflected in wide uncertainty ranges for SOC stocks in these regions. Considering
26 their large areal extent it is nevertheless important to provide assessments based on what little
27 data are available. Further field sampling and/or data compilation will hopefully provide
28 opportunities to refine these estimates.

29 4.3.3 Differences between soil pedon databases and sampling biases

30 For the 0 to 1 m depth interval, two independent sources of pedon data to estimate SOC
31 storage (kg C m^{-2}) are available (pedon dataset 1 used to calculate 0 to 1 m SOC stocks and

1 pedon dataset 2 used to calculate 1 to 3 m SOC stocks). While pedon dataset 2 was not
2 actually used in the quantification of 0 to 1 m SOC stocks, estimates are available for that
3 depth range. If we assume that the two independent datasets are accurate samples of 0 to 1 m
4 SOC stocks, there should be no significant differences between the datasets. We therefore
5 infer that the significant differences in 0 to 1 m SOC storage between pedon datasets 1 and 2
6 could be an indication of sampling biases. Near surface pedon SOC storage is correlated to
7 SOC storage below 1 m depth (Hugelius et al., 2014) and any biases in 0 to 1 m SOC could
8 therefore also affect our estimates for stocks below 1 m depth. Summarised for the whole
9 permafrost region, there are no significant differences between the datasets for the Orthel and
10 Histel classes, while Turbels and non-permafrost mineral soils may be biased high and
11 Histosols biased low in pedon dataset 2. Because data for pedon dataset 1 is only available
12 aggregated to the whole permafrost region, no statistical comparisons can be made at regional
13 levels. Detailed comparisons reveal that in North America, pedon dataset 2 is consistently
14 estimating higher values than pedon dataset 1 (data not shown). In other regions, there are no
15 clear patterns and results differ across soil classes.

16 There is an indicated bias towards high SOC in Turbels of pedon dataset 2. Closer
17 examination of regional patterns reveals that this is largely due to very high SOC storage for
18 Turbels in North America (at all depths). For Eurasian Turbels the pattern is opposite with
19 higher estimates in pedon dataset 1. When subdivided following physiographic regions
20 differences between the two datasets are small. The bulk of available North American Turbels
21 are from the North Slope of Alaska (Fig. 1), where previous studies have also shown high
22 mean SOC storage in cryoturbated soils (Michaelson et al., 1996; Ping et al., 1998; Johnson et
23 al., 2011). In general, the available data in pedon dataset 2 is geographically clustered (Fig. 1;
24 Hugelius et al., 2013a) and more dispersed samples of pedons from across regions could
25 reduce any biases introduced by clustered sampling.

26 Hugelius et al. (2013a) discuss a potential large bias for organic soils where targeted sampling
27 campaigns may cause sites with thick peat deposits to be overrepresented in datasets. To
28 avoid such a bias, pedon dataset 2 includes all sites with organic soils, even if data from the
29 mineral subsoil was missing (data from mineral C-horizons below organic deposits were
30 extrapolated to full depth or default values were applied). A closer examination of the
31 available data on peat deposit thickness reveals that the peat depths in those sites, where no
32 extrapolation was needed (i.e. where coring was pursued to great depths in the field), are not

1 representative of the true depth distribution of peat deposits based on all available
2 observations from organic soils. If only pedons without extrapolation are used, mean peat
3 depths are overestimated by a factor 2 (Fig. 4). If only sites without extrapolation were used
4 to calculate SOC stocks, the total SOC stock estimates for organic soils (Histosols and
5 Histels) would increase from the current 302 Pg to 338 Pg. The estimated error introduced by
6 applying default values is on the order of only ± 2 Pg (calculated from the standard error of
7 means of the applied default values and mean extrapolation depth of pedons). The use of sites
8 where data on mineral sub-soils was extrapolated may be one factor contributing to the
9 indicated low-bias of Histosols in pedon dataset 2 when compared to pedon dataset 1.

10 It is difficult to assess the potential bias between pedon datasets 1 and 2 for non-permafrost
11 mineral soils. There is a much larger replication for these soils in pedon dataset 1. However,
12 estimated SOC storage for many pedons in dataset 1 are from the global scale ISRIC database
13 (Batjes, 1996; Tab. S1) including all Eurasian permafrost-free soils and North American
14 Aridisols, Andisols and Ultisols. Because of this, the data used for much of the non-
15 permafrost mineral soils in dataset 1 are likely not truly representative of soils in the
16 permafrost region.

17 4.3.4 Data availability and uncertainty estimates for deltaic deposits

18 The updated estimate of deltaic SOC storage confirms that a substantial stock of permafrost
19 SOC is stored in these deposits, but it is also clear that more field observations are needed to
20 produce robust estimates. The calculated CI ranges indicate that uncertainties are larger
21 concerning alluvium depth than mean SOC storage value, but the observational base for both
22 estimates are very small and from most major deltas no field observations are available (Tab.
23 5). The estimated uncertainty ranges include an approximation of representation errors caused
24 by the limited sample sizes. However, these estimates cannot fully account for the fact that
25 most deltas lack field data altogether. Because of these very limited databases these estimates
26 must be considered as preliminary for those deltas where no data is available. Further, the
27 estimates rely on the assumption that alluvial SOC contents measured in the near surface can
28 be extrapolated to full depth and the reported uncertainty ranges assume a correct spatial
29 extent of deltas and correct volumetric extent of water bodies and massive ice.

1 4.3.5 Uncertainties and data gaps of estimates for Yedoma region deposits

2 SOC stocks in intact Yedoma and perennially frozen thermokarst deposits are calculated
3 based on bootstrapped analyses of data on deposit thickness, organic C %, bulk density
4 (including segregated ice %), and wedge-ice volume gathered from a total of twenty-two
5 study areas sampled/described in the field. This approach reflects the variability of individual
6 observations (i.e. analyses of discrete sediment samples or individual depth measurements),
7 which is an effective way of estimating stocks with large inherent (spatial) variability. By
8 estimating 1 mean based on 10,000 single observation-based bootstrapping means, our single
9 estimator's uncertainty is remarkably lower compared to Strauss et al. (2013). To further
10 improve SOC stock calculation, sensitivity analysis revealed that enhanced data on ice wedge
11 volume (Ulrich et al., 2014) and Yedoma deposit thickness will reduce uncertainties
12 significantly.

13 Another potential source of uncertainty is the geographical extent of the Yedoma region,
14 which is challenging to define discretely. As described in Strauss et al. (2013), the definition
15 of the Yedoma region used here is based on estimates from Romanovskii (1993) for Siberia
16 and Jorgenson et al. (2008) for Alaska. Moreover, we added ~65,000 km² for regions with
17 smaller known Yedoma occurrences (e.g. south of Taymyr Peninsula and Chukotka in Russia
18 and the Yukon Territory in Canada). To describe the spatial fragmentation of Yedoma deposit
19 remnants, we used a fragmented Yedoma coverage in the region of 30%, whereas thermokarst
20 basins with refrozen sediments cover 56%. Existing thermokarst lakes and rivers were
21 excluded, covering 14% of the region. To improve this simplified approach, an uncertainty
22 reduction could be reached by implementing spatially explicit data of intact Yedoma
23 distribution based on geological maps for Siberia (Grosse et al., 2013). Nevertheless, data for
24 thermokarst deposit coverage and intact Yedoma coverage in the Taymyr lowlands,
25 Chukotka, parts of Alaska and north-western Canada are currently not available.

26 4.3.6 Potential error sources not included in uncertainty estimates

27 The uncertainty ranges calculated for this study are based on the assumption that the various
28 areal extents of soil (sub)orders, deltas, intact Yedoma and thermokarst are correctly mapped.
29 In all cases we thus assume that the maps are right and that spatial errors do not contribute to
30 estimated uncertainties. A regional study of the Northern Usa River Basin (Russian Arctic)
31 showed that uncertainties from map errors were similar in magnitude as uncertainties from

1 insufficient pedon representation or natural variability (95% CI ranges both estimated at $\pm 8\%$
2 for 0 to 1 m SOC stocks; Hugelius, 2012). Because no dedicated ground-truthing dataset is
3 available to assess the NCSCD soil maps that form the spatial base of upscaling SOC in 0 to 3
4 m soils, we cannot directly quantify this error. Small scale maps (covering large geographic
5 regions) do not necessarily have lower mapping accuracy than large scale maps (covering
6 small geographic regions), but because of the necessary generalization inherent in map-
7 making, large scale maps from local studies (such as the land cover maps used by Hugelius,
8 2012) are expected to have higher mapping precision. We would thus expect that uncertainty
9 from spatial errors in the maps used in this study to be equal to or greater than those found for
10 the Northern Usa River Basin (i.e. a 95% CI of $\pm 8\%$ or more). If we assume an uncertainty of
11 $\pm 10\%$ from spatial error component in all estimates, the propagated uncertainty range of the
12 combined estimate of 1307 Pg SOC would increase by $\sim \pm 30$ Pg to $\sim \pm 200$ Pg. However, to
13 properly assess the spatial errors in permafrost region SOC stock estimates, comprehensive
14 ground-truthing datasets for circumpolar soil classification maps, deltaic extent and Yedoma
15 region extent are needed.

16 Imprecision in field or laboratory measurements (e.g., sample volume, bulk density or C
17 content) are not accounted for in this study. The relative importance of such errors is expected
18 to differ between different studies, scales and landscape types. Goidts et al. (2009) provide a
19 comprehensive analysis and discussion of different sources of uncertainty in SOC stock
20 estimates and their propagation in upscaling. They conclude that following upscaling to
21 landscape scale, imprecision in laboratory measurements of rock mass fragments (> 2 mm),
22 SOC concentration (%) and bulk density may propagate and cause substantial uncertainty in
23 estimates. However, as this circumpolar estimate study combines field and laboratory data
24 collected from a multitude of different sources over several decades, quantifying this
25 uncertainty is currently not possible.

26 **4.4 Deposits with significant SOC stocks below 3 m depth**

27 This estimate of SOC stocks in the northern circumpolar permafrost region includes 0 to 3 m
28 soils as well as deeper deltaic deposits and permafrost deposits in the Yedoma region. Other
29 deposits with significant SOC stocks below 3 m depth have not been included. In many
30 organic soils of the permafrost region, peat deposits extend below 3 m depth (e.g. Sheng et
31 al., 2004; Tarnocai et al., 2005; Hugelius and Kuhry, 2009; Yu, 2012). Of the organic soils
32 included in pedon dataset 2 in this study, 17% sites have peat deposits extending below 3 m

1 depth (Fig. 4) and these peat deposits are expected to store substantial SOC stocks in addition
2 to what is included here.

3 The current estimate for deltaic deposits includes the twelve major deltas in the permafrost
4 region (selection based on Walker, 1998), but all intermediate or small deltas are excluded.
5 Presently, there is no dataset summarizing the aerial extent of deltaic deposits in the northern
6 circumpolar permafrost region, but a geospatial characterization of Arctic permafrost
7 coastlines (Lantuit et al., 2012) shows significant occurrences of deltas along the Arctic
8 coastline besides those included here. New data also reveals that, besides deltas and the
9 Yedoma region, there are significant SOC stocks in other unconsolidated deeper Quaternary
10 deposits of the permafrost region (Hugelius et al., 2011; Schirmer et al., 2011a; Ping et
11 al., 2011; among others). Following the physiographic subdivision, 6.2×10^6 km² of the
12 permafrost region is characterised by thick sedimentary overburden (sediments deeper than 5
13 to 10 m; Brown et al., 2002). Deltaic deposits and the Yedoma region included in this study
14 together cover ca. 1.5×10^6 km². Any SOC stored in deposits below 3 m depth in the
15 remaining ca. 5×10^6 km² of thick sedimentary overburden remains unaccounted for.

16 **4.5 Potential vulnerability and remobilization of permafrost region SOC** 17 **stocks**

18 The substantial SOC stocks of the northern permafrost region are vulnerable to thaw
19 remobilization following permafrost degradation (Schuur et al., 2008, 2013). Key processes
20 of permafrost degradation include active layer deepening, talik or thermokarst formation and
21 thermal erosion (Schuur et al., 2008; Grosse et al., 2011). While active layer deepening
22 mainly affects near surface soils (Harden et al., 2012), taliks, thermokarst and thermal erosion
23 can cause remobilization and potential mineralization of SOC stored at greater depths. Local
24 scale studies indicate that both active layer deepening and thermokarst (or thermoerosion) can
25 affect substantial fractions of permafrost landscapes over decadal timescales (Jones et al.,
26 2011; Hugelius et al., 2011, 2012; Sannel and Kuhry, 2011; Jones et al., 2013).

27 Both active layer SOC and permafrost is highly susceptible to impacts from wildfire (Harden
28 et al., 2000), which has increased in severity and areal extent with recent warming (Turetsky
29 et al., 2011). SOC stocks in the permafrost region may be reduced directly via combustion, or
30 indirectly due to post-fire increases in soil temperature and decomposition (Harden et al.,
31 2006; Mack et al., 2011). Fire-driven reductions in organic-horizon thickness also decreases

1 sub-soil insulation and cause active layer deepening, which can increase the amount of SOM
2 susceptibly to decomposition in the unfrozen phase (O'Donnell et al., 2011).

3 Global scale projections of greenhouse-gas emissions from permafrost deposits using Earth
4 System Models (ESMs) demonstrate that inclusion of permafrost soil C stocks lead to the
5 potential for a large positive climate feedback from the permafrost region (Koven et al., 2011;
6 Schaefer et al., 2011; Burke et al., 2012; Schneider von Deimling et al., 2012; MacDougall et
7 al., 2012). These models are still simplified representations of permafrost carbon cycling and
8 do not resolve high landscape spatial heterogeneity or account for many observed processes,
9 such as thermokarst or post-fire dynamics. The complexity of ESMs also makes it difficult to
10 assign mechanistic sources of model errors. In order to increase confidence in ESMs, it is
11 necessary to better understand the controls on soil C by process, location, and depth so that
12 observations can be used as a benchmark for these models. Extant ESM-based quantifications
13 of the permafrost-climate feedback have not included SOC stocks of deltaic alluvium or
14 Yedoma and the reduced estimates for these stocks would not affect published projected
15 feedback magnitudes. Using a simplified modelling framework, Burke et al. (2012)
16 demonstrated that uncertainties in quantification of permafrost SOC stocks accounted for ca.
17 half of the variability in ESM projections of increased global mean temperature associated
18 with permafrost carbon thaw (excluding variability caused by different representative
19 concentration pathway scenarios). Using similar approaches together with the quantified
20 uncertainty ranges provided in this study could reveal the relative impact of large SOC
21 estimate uncertainties on ESMs projections of the permafrost-climate feedback.

22 **5 Conclusions**

23 This study summarises present knowledge regarding estimated size and variability of SOC
24 stocks in 0 to 3 m soils, deltas and the Yedoma region across the northern circumpolar
25 permafrost region. Combined estimated SOC stocks in this region are 1307 Pg with an
26 uncertainty range of 1140 to 1476 Pg. An estimated 999 Pg of SOC is stored in permafrost
27 terrain, of which 822 Pg is perennially frozen.

28 There are substantial regional gaps in pedon data to assess SOC storage below 1 m depth.
29 Especially cryoturbated and organic (peatland) soils are highly variable and difficult to assess.
30 The High Arctic bioclimatic zone and physiographic regions characterised by thin
31 sedimentary overburden (areas of mountains, highlands, and plateaus) are poorly represented
32 in the current pedon databases. Future field sampling to reduce these limitations should focus

1 on the following observing strategies: (1) sampling soils in the full 0 to 3m depth interval
2 throughout the permafrost region, (2) sampling soils in regions of thin sedimentary
3 overburden and the High Arctic, and (3) sampling soils away from current data clusters,
4 particularly in Eurasia. The estimates of SOC stocks in deltaic alluvium and Yedoma region
5 deposits are also based on very limited observational evidence. Improved estimates of deposit
6 thicknesses, mean SOC content and massive ice content could greatly reduce uncertainties in
7 these estimates.

8 It is important to note that the presented uncertainty ranges do not account for errors in
9 upscaling maps or analytical uncertainties in laboratory measurements. To quantify
10 uncertainties arising from errors in upscaling maps, ground-truthing datasets for soil
11 classification maps, deltaic alluvium extent and Yedoma region extent are needed. We also
12 stress that substantial pools of SOC not included in this present study are stored below 3 m
13 depth in soils and in unconsolidated sediments outside of the Yedoma region and deltaic
14 deposits. The size and potential thaw-vulnerability of these additional SOC pools remains to
15 be determined.

16 We conclude that soils and sediments of the northern circumpolar permafrost region store
17 large amounts of SOC (~1300 Pg) but that this revised estimates shows that the fraction of
18 SOC that is perennially frozen (~800 Pg) is substantially smaller than previously estimated.

19

20 **Acknowledgements**

21 We are grateful to C. Tarnocai for providing pedon data as well as insightful comments and
22 suggestions. We are grateful to two anonymous reviewers for providing detailed and
23 insightful comments, especially regarding calculations of estimate uncertainties. This work
24 was supported by grants from the International Permafrost Association, the EU 7th framework
25 PAGE21 project, the Nordic Centres of Excellence DEFROST project, a grant of the Swedish
26 Research Council as a part of the International Program CryoCARB and the Bert Bolin Centre
27 for Climate Research at Stockholm University. This effort is also a contribution to the Global
28 Carbon Project of the Earth System Science Partnership, the Carbon Stocks in Permafrost
29 regions Project of the International Permafrost Association and the Vulnerability of
30 Permafrost Carbon Research Coordination Network under sponsorship of the National
31 Science Foundation. The contributions of J. Strauss were funded by the Federal Ministry of
32 Education and Research (01DM12011) and the German National Academic Foundation. The

1 contributions of S. Zubrzycki were partly supported through the BMBF project “CarboPerm”
2 (03G0836A), and partly supported through the Cluster of Excellence 'CliSAP' (EXC177),
3 Universität Hamburg, funded through the German Research Foundation (DFG). The
4 contributions of G. Grosse were supported by a European Research Council Starting Grant
5 (#338335). The contributions of B. Elberling were supported by the Center for Permafrost,
6 funded by the Danish National Research Foundation (CENPERM DNRF100). The
7 contributions of G.J. Michaelson and C.L. Ping were supported by the USDA-Hatch project.
8 The contributions of Z.C. Yu were supported by the US NSF (ARC-1107981).

9

10 **References**

- 11 Aylsworth, J., Burgess, M., Desrochers, D., Duk-Rodkin, A., Robertson, T., and Traynor, J.:
12 Surficial geology, subsurface materials, and thaw sensitivity of sediments, in: The physical
13 environment of the Mackenzie valley, Northwest territories: A base line for the assessment of
14 environmental change, edited by: Dyke, L. D., and Brooks, G. R., Geological Survey of
15 Canada, Ottawa, 31-39, 2000.
- 16 Batjes, N. H.: Total carbon and nitrogen in the soils of the World, *European Journal of Soil*
17 *Science*, 47, pp. 151-164, 1996.
- 18 Brown, J., Ferrians, O. J., Heginbottom, J. A., and Melnikov, E. S.: Circum-Arctic map of
19 permafrost and ground-ice conditions, version 2, National Snow and Ice Data Center,
20 Boulder, 2002.
- 21 Burke, E. J., Hartley, I. P., and Jones, C. D.: Uncertainties in the global temperature change
22 caused by carbon release from permafrost thawing, *The Cryosphere*, 6, 1063-1076,
23 10.5194/tc-6-1063-2012, 2012a.
- 24 Burke, E. J., Jones, C. D., and Koven, C. D.: Estimating the permafrost-carbon climate
25 response in the CMIP5 climate models using a simplified approach, *Journal of Climate*, 26,
26 4897-4909, 10.1175/jcli-d-12-00550.1, 2012b.
- 27 Davidson, E. A., and Janssens, I. A.: Temperature sensitivity of soil carbon decomposition
28 and feedbacks to climate change, *Nature*, 440, 165-173, 2006.

1 Goidts, E., Van Wesemael, B., and Crucifix, M.: Magnitude and sources of uncertainties in
2 soil organic carbon (SOC) stock assessments at various scales, *European Journal of Soil*
3 *Science*, 60, 723-739, 10.1111/j.1365-2389.2009.01157.x, 2009.

4 Grosse, G., Harden, J., Turetsky, M. R., McGuire, A. D., Camill, P., Tarnocai, C., Frohling,
5 S., Schuur, E. A. G., Jorgenson, T., Marchenko, S., Romanovsky, V., Wickland, K. P.,
6 French, N., Waldrop, M. P., Bourgeau-Chavez, L., and Striegl, R. G.: Vulnerability of high-
7 latitude soil organic carbon in North America to disturbance, *Journal of Geophysical*
8 *Research*, 116, G00K06, 10.1029/2010JG001507, 2011.

9 Grosse, G., Robinson, J. E., Bryant, R., Taylor, M. D., Harper, W., DeMasi, A., Kyker-
10 Snowman, E., Veremeeva, A., Schirmer, L., and Harden, J.: Distribution of late
11 Pleistocene ice-rich syngenetic permafrost of the Yedoma suite in east and central Siberia,
12 Russia, U.S. Geological Survey Open File Report, 1078, 37, 2013.

13 Hammer, Ø., Harper, D. A. T., and Ryan, P. D.: Past: Paleontological statistics software
14 package for education and data analysis, *Palaeontologia Electronica*, 4, 1-10, 2012.

15 Harden, J. W., Trumbore, S. E., Stocks, B. J., Hirsch, A., Gower, S. T., O'Neill, K. P., and
16 Kasischke, E. S.: The role of fire in the boreal carbon budget, *Glob. Change Biol.*, 6, 174-184,
17 10.1046/j.1365-2486.2000.06019.x, 2000.

18 Harden, J. W., Meier, R., Silapaswan, C., Swanson, D. K., and McGuire, A. D.: Soil drainage
19 and its potential for influencing wildfires in Alaska, *US Geological Survey Professional Paper*
20 1678, 139-144, 2001.

21 Harden, J. W., Manies, K. L., Turetsky, M. R., and Neff, J. C.: Effects of wildfire and
22 permafrost on soil organic matter and soil climate in interior Alaska, *Glob. Change Biol.*, 12,
23 2391-2403, 10.1111/j.1365-2486.2006.01255.x, 2006.

24 Harden, J. W., Koven, C. D., Ping, C. L., Hugelius, G., McGuire, A. D., Camill, P.,
25 Jorgenson, T., Kuhry, P., Michaelson, G. J., O'Donnell, J. A., Schuur, E. A. G., Tarnocai, C.,
26 Johnson, K., and Grosse, G.: Field information links permafrost carbon to physical
27 vulnerabilities of thawing, *Geophys. Res. Lett.*, 39, L15704, 10.1029/2012gl051958, 2012.

28 Heginbottom, J. A., Brown, J., Ferrians, O. J., and Melnikov, E. S.: Circum-arctic map of
29 permafrost and ground ice conditions, *Sixth International Conference on Permafrost*, Beijing,
30 1993, 1132-1136, 1993

1 Heginbottom, J. A.: Permafrost distribution and ground ice in surficial materials, in: The
2 physical environment of the Mackenzie valley, Northwest Territories: A base line for the
3 assessment of environmental change, edited by: Dyke, L. D., and Brooks, G. R., Geological
4 Survey of Canada, Ottawa, 31-39, 2000.

5 Horwath Burnham, J., and Sletten, R. S.: Spatial distribution of soil organic carbon in
6 northwest Greenland and underestimates of high Arctic carbon stores, *Global Biogeochemical*
7 *Cycles*, 24, GB3012, 10.1029/2009gb003660, 2010.

8 Houghton, R. A.: Balancing the global carbon budget, *Annual Review of Earth and Planetary*
9 *Sciences*, 35, 313-347, 10.1146/annurev.earth.35.031306.140057, 2007.

10 Hugelius, G., and Kuhry, P.: Landscape partitioning and environmental gradient analyses of
11 soil organic carbon in a permafrost environment, *Global Biogeochem. Cycles*, 23, GB3006,
12 10.1029/2008gb003419, 2009.

13 Hugelius, G., Virtanen, T., Kaverin, D., Pastukhov, A., Rivkin, F., Marchenko, S.,
14 Romanovsky, V., and Kuhry, P.: High-resolution mapping of ecosystem carbon storage and
15 potential effects of permafrost thaw in periglacial terrain, European Russian Arctic, *Journal of*
16 *Geophysical Research: Biogeosciences*, 116, G03024, 10.1029/2010jg001606, 2011.

17 Hugelius, G.: Spatial upscaling using thematic maps: An analysis of uncertainties in
18 permafrost soil carbon estimates, *Global Biogeochemical Cycles*, 26, GB2026,
19 10.1029/2011gb004154, 2012.

20 Hugelius, G., Routh, J., Kuhry, P., and Crill, P.: Mapping the degree of decomposition and
21 thaw remobilization potential of soil organic matter in discontinuous permafrost terrain,
22 *Journal of Geophysical Research: Biogeosciences*, 117, G02030, 10.1029/2011jg001873,
23 2012.

24 Hugelius, G., Bockheim, J. G., Camill, P., Elberling, B., Grosse, G., Harden, J. W., Johnson,
25 K., Jorgenson, T., Koven, C. D., Kuhry, P., Michaelson, G., Mishra, U., Palmtag, J., Ping, C.-
26 L., O'Donnell, J., Schirrmeyer, L., Schuur, E. A. G., Sheng, Y., Smith, L. C., Strauss, J., and
27 Yu, Z.: A new data set for estimating organic carbon storage to 3 m depth in soils of the
28 northern circumpolar permafrost region, *Earth System Science Data*, 5, 393-402,
29 10.5194/essd-5-393-2013, 2013a.

30 Hugelius, G., Tarnocai, C., Broll, G., Canadell, J. G., Kuhry, P., and Swanson, D. K.: The
31 northern circumpolar soil carbon database: Spatially distributed datasets of soil coverage and

1 soil carbon storage in the northern permafrost regions, *Earth Syst. Sci. Data*, 5, 3-13,
2 10.5194/essd-5-3-2013, 2013b.

3 Hugelius, G., Strauss, J., Zubrzycki, S., Harden, J., Schuur, E. A. G., Ping, C.-L.,
4 Schirrmeister, L., Grosse, G., Michaelson, G., Koven, C., O'Donnell, J., Elberling, B., Mishra,
5 U., Camill, P., Yu, Z., Palmtag, J., and Kuhry, P.: Improved estimates show large circumpolar
6 stocks of permafrost carbon while quantifying substantial uncertainty ranges and identifying
7 remaining data gaps, *Biogeosciences Discussions*, 11, 4771-4822, 10.5194/bgd-11-4771-
8 2014, 2014.

9 Johnson, K. D., Harden, J., McGuire, A. D., Bliss, N. B., Bockheim, J. G., Clark, M.,
10 Nettleton-Hollingsworth, T., Jorgenson, M. T., Kane, E. S., Mack, M., O'Donnell, J., Ping, C.-
11 L., Schuur, E. A. G., Turetsky, M. R., and Valentine, D. W.: Soil carbon distribution in
12 Alaska in relation to soil-forming factors, *Geoderma*, 167-168, 71-84,
13 10.1016/j.geoderma.2011.10.006, 2011.

14 Johnston, G. H., and Brown, R. J. E.: Stratigraphy of the Mackenzie river delta, Northwest
15 Territories, Canada, *Geological Society of America Bulletin*, 76, 103-112, 10.1130/0016-
16 7606(1965)76[103:sotmrd]2.0.co;2, 1965.

17 Jones, B. M., Grosse, G., Arp, C. D., Jones, M. C., Walter Anthony, K. M., and Romanovsky,
18 V. E.: Modern thermokarst lake dynamics in the continuous permafrost zone, northern
19 Seward peninsula, Alaska, *Journal of Geophysical Research - Biogeosciences*, 116, G00M03,
20 10.1029/2011JG001666, 2011.

21 Jones, M. C., Booth, R. K., Yu, Z. C., and Ferry, P.: A 2200-year record of permafrost
22 dynamics and carbon cycling in a collapse-scar bog, interior Alaska, *Ecosystems*, 16, 1-19,
23 10.1007/s10021-012-9592-5, 2013.

24 Jorgenson, M. T., Yoshikawa, K., Kanveskiy, M., Shur, Y., Romanovsky, V., Marchenko, S.,
25 Grosse, G., Brown, J., and Jones, B.: Permafrost characteristics of Alaska, *Proceedings of the*
26 *Ninth International Conference on Permafrost*, 3, 121-122, 2008.

27 Koven, C. D., Ringeval, B., Friedlingstein, P., Ciais, P., Cadule, P., Khvorostyanov, D.,
28 Krinner, G., and Tarnocai, C.: Permafrost carbon-climate feedbacks accelerate global
29 warming, *Proceedings of the National Academy of Sciences*, 108, 14769-14774,
30 10.1073/pnas.1103910108, 2011.

1 Kuhry, P., Dorrepaal, E., Hugelius, G., Schuur, E. A. G., and Tarnocai, C.: Potential
2 remobilization of belowground permafrost carbon under future global warming, *Permafrost*
3 *Periglacial Process.*, 21, 208-214, 10.1002/ppp.684, 2010.

4 Kuhry, P., Grosse, G., Harden, J. W., Hugelius, G., Koven, C. D., Ping, C. L., Schirrmeister,
5 L., and Tarnocai, C.: Characterisation of the permafrost carbon pool, *Permafrost Periglacial*
6 *Process.*, 24, 146-155, 10.1002/ppp.1782, 2013.

7 Lantuit, H., Overduin, P. P., Couture, N., Wetterich, S., Aré, F., Atkinson, D., Brown, J.,
8 Cherkashov, G., Drozdov, D. S., Forbes, D. L., Graves-Gaylord, A., Grigoriev, M.,
9 Hubberten, H.-W., Jordan, J., Jorgenson, T., Ødegård, R. S., Ogorodov, S., Pollard, W. H.,
10 Rachold, V., Sedenko, S., Solomon, S., Steenhuisen, F., Streletskaaya, I., and Vasiliev, A. A.:
11 The arctic coastal dynamics database: A new classification scheme and statistics on Arctic
12 permafrost coastlines, *Estuaries and Coasts*, 35, 383-400, 10.1007/s12237-010-9362-6, 2012.

13 MacDougall, A. H., Avis, C. A., and Weaver, A. J.: Significant contribution to climate
14 warming from the permafrost carbon feedback, *Nature Geoscience*, 5, 719-721,
15 10.1038/ngeo1573, 2012.

16 Mack, M. C., Bret-Harte, M. S., Hollingsworth, T. N., Jandt, R. R., Schuur, E. A. G., Shaver,
17 G. R., and Verbyla, D. L.: Carbon loss from an unprecedented Arctic tundra wildfire, *Nature*,
18 475, 489-492, 10.1038/nature10283, 2011.

19 Michaelson, G. J., Ping, C., and Kimble, J.: Carbon storage and distribution in tundra soils of
20 Arctic Alaska, USA, *Arctic and Alpine Research*, 414-424, 10.2307/1551852, 1996.

21 Mishra, U., Jastrow, J., Matamala, R., Hugelius, G., Koven, C., Harden, J., Ping, C.,
22 Michaelson, G., Fan, Z., and Miller, R.: Empirical estimates to reduce modeling uncertainties
23 of soil organic carbon in permafrost regions: A review of recent progress and remaining
24 challenges, *Environmental Research Letters*, 8, 035020, 10.1088/1748-9326/8/3/035020,
25 2013.

26 O'Donnell, J. A., Harden, J. W., McGuire, A. D., Kanevskiy, M. Z., Jorgenson, M. T., and
27 Xu, X.: The effect of fire and permafrost interactions on soil carbon accumulation in an
28 upland black spruce ecosystem of interior Alaska: Implications for post-thaw carbon loss,
29 *Glob. Change Biol.*, 17, 1461-1474, 10.1111/j.1365-2486.2010.02358.x, 2011.

30 Ping, C.-L., Michaelson, G. J., Guo, L., Jorgenson, M. T., Kanevskiy, M., Shur, Y., Dou, F.,
31 and Liang, J.: Soil carbon and material fluxes across the eroding Alaska Beaufort Sea

1 coastline, *Journal of Geophysical Research: Biogeosciences*, 116, G02004,
2 10.1029/2010jg001588, 2011.

3 Ping, C. L., Bockheim, J. G., Kimble, J. M., Michaelson, G. J., and Walker, D. A.:
4 Characteristics of cryogenic soils along a latitudinal transect in Arctic Alaska, *Journal of*
5 *Geophysical Research*, 103, 28917-28928, 10.1029/98jd02024, 1998.

6 Ping, C. L., Michaelson, G. J., Jorgenson, M. T., Kimble, J. M., Epstein, H., Romanovsky, V.
7 E., and Walker, D. A.: High stocks of soil organic carbon in the North American Arctic
8 region, *Nature Geoscience*, 1, pp. 615-619, 2008.

9 Roddick, J. C.: Generalized numerical error analysis with applications to geochronology and
10 thermodynamics, *Geochimica et Cosmochimica Acta*, 51, 2129-2135, 10.1016/0016-
11 7037(87)90261-4, 1987.

12 Romanovskii, N. N.: *Fundamentals of cryogenesis of lithosphere*, Moscow University Press,
13 Moscow, 336 pp., 1993.

14 Sannel, A. B. K., and Kuhry, P.: Warming-induced destabilization of peat plateau/thermokarst
15 lake complexes, *Journal of Geophysical Research: Biogeosciences*, 116, G03035,
16 10.1029/2010jg001635, 2011.

17 Schaefer, K., Zhang, T., Bruhwiler, L., and Barrett, A. P.: Amount and timing of permafrost
18 carbon release in response to climate warming, *Tellus B*, 63, 165-180, 10.1111/j.1600-
19 0889.2011.00527.x, 2011.

20 Schirrmeister, L., Grosse, G., Schnelle, M., Fuchs, M., Krbetschek, M., Ulrich, M., Kunitsky,
21 V., Grigoriev, M., Andreev, A., Kienast, F., Meyer, H., Babiy, O., Klimova, I., Bobrov, A.,
22 Wetterich, S., and Schwamborn, G.: Late Quaternary paleoenvironmental records from the
23 western Lena delta, Arctic Siberia, *Palaeogeogr. Palaeoclimatol. Palaeoecol.*, 299, 175-196,
24 10.1016/j.palaeo.2010.10.045, 2011a.

25 Schirrmeister, L., Grosse, G., Wetterich, S., Overduin, P. P., Strauss, J., Schuur, E. A. G., and
26 Hubberten, H.-W.: Fossil organic matter characteristics in permafrost deposits of the northeast
27 Siberian Arctic, *Journal of Geophysical Research*, 116, G00M02, 10.1029/2011jg001647,
28 2011b.

29 Schirrmeister, L., Kunitsky, V., Grosse, G., Wetterich, S., Meyer, H., Schwamborn, G.,
30 Babiy, O., Derevyagin, A., and Siegert, C.: Sedimentary characteristics and origin of the late

1 Pleistocene ice complex on north-east Siberian Arctic coastal lowlands and islands - a review,
2 Quaternary International, 241, 3-25, 10.1016/j.quaint.2010.04.004, 2011c.

3 Schneider von Deimling, T., Meinshausen, M., Levermann, A., Huber, V., Frieler, K.,
4 Lawrence, D. M., and Brovkin, V.: Estimating the near-surface permafrost-carbon feedback
5 on global warming, Biogeosciences, 9, 649-665, 10.5194/bg-9-649-2012, 2012.

6 Schuur, E. A. G., Bockheim, J., Canadell, J. G., Euskirchen, E., Field, C. B., Goryachkin, S.
7 V., Hagemann, S., Kuhry, P., Lafleur, P. M., and Lee, H.: Vulnerability of permafrost carbon
8 to climate change: Implications for the global carbon cycle, BioScience, 58, 701-714,
9 10.1641/B580807, 2008.

10 Schuur, E. A. G., Abbott, B. W., Bowden, W. B., Brovkin, V., Camill, P., Canadell, J. G.,
11 Chanton, J. P., Chapin, F. S., III, Christensen, T. R., Ciais, P., Crosby, B. T., Czimeczik, C. I.,
12 Grosse, G., Harden, J., Hayes, D. J., Hugelius, G., Jastrow, J. D., Jones, J. B., Kleinen, T.,
13 Koven, C. D., Krinner, G., Kuhry, P., Lawrence, D. M., McGuire, A. D., Natali, S. M.,
14 O'Donnell, J. A., Ping, C. L., Riley, W. J., Rinke, A., Romanovsky, V. E., Sannel, A. B. K.,
15 Schädel, C., Schaefer, K., Sky, J., Subin, Z. M., Tarnocai, C., Turetsky, M. R., Waldrop, M.
16 P., Walter Anthony, K. M., Wickland, K. P., Wilson, C. J., and Zimov, S. A.: Expert
17 assessment of vulnerability of permafrost carbon to climate change, Climatic Change, 119,
18 359-374, 10.1007/s10584-013-0730-7, 2013.

19 Schwamborn, G., Rachold, V., Schneider, W., Grigoriev, M., and Nixdorf, U.: Ground
20 penetrating radar and shallow seismic-stratigraphic and permafrost investigations of Lake
21 Nikolay, Lena delta, Arctic Siberia, Eight International Conference on Ground Penetrating
22 Radar, Brisbane, 2000, 783-789,

23 Schwamborn, G., Rachold, V., and Grigoriev, M. N.: Late Quaternary sedimentation history
24 of the Lena delta, Quaternary International, 89, 119-134, 10.1016/S1040-6182(01)00084-2,
25 2002.

26 Sheng, Y., Smith, L. C., MacDonald, G. M., Kremenetski, K. V., Frey, K. E., Velichko, A.
27 A., Lee, M., Beilman, D. W., and Dubinin, P.: A high-resolution GIS-based inventory of the
28 west Siberian peat carbon pool, Global Biogeochemical Cycles, 18, GB3004,
29 10.1029/2003gb002190, 2004.

1 Smith, I. R.: The seismic shothole drillers' log database and GIS for Northwest Territories
2 and northern Yukon: An archive of near-surface lithostratigraphic surficial and bedrock
3 geology data, Geological Survey of Canada, Open File Report 6833, 10.4095/288754, 2011.

4 Smith, L. C., Sheng, Y., MacDonald, G. M., and Hinzman, L. D.: Disappearing Arctic lakes,
5 Science, 308, 1429, 10.1126/science.1108142, 2005a.

6 Smith, S. L., Burgess, M. M., Chartrand, J., and Lawrence, D. E.: Digital borehole
7 geotechnical database for the Mackenzie valley/delta region, Geological Survey of Canada,
8 Open File Report 4924, 30, 2005b.

9 Soil Survey Staff: Soil taxonomy: A basic system of soil classification for making and
10 interpreting soil surveys, 2 ed., United States Department of Agriculture, Washington, 869
11 pp., 1999.

12 Strauss, J., Schirrmeister, L., Wetterich, S., Borchers, A., and Davydov, S. P.: Grain-size
13 properties and organic-carbon stock of Yedoma ice complex permafrost from the Kolyma
14 lowland, northeastern Siberia, Global Biogeochemical Cycles, 26, GB3003,
15 10.1029/2011GB004104, 2012.

16 Strauss, J., Schirrmeister, L., Grosse, G., Wetterich, S., Ulrich, M., Herzsuh, U., and
17 Hubberten, H.-W.: The deep permafrost carbon pool of the Yedoma region in Siberia and
18 Alaska, Geophys. Res. Lett., 2013GL058088, 10.1002/2013GL058088, 2013.

19 Tarnocai, C., Kettles, I. M., and Lacelle, B.: Peatlands of Canada database, Agriculture and
20 Agri-Food Canada, Ottawa, 2005.

21 Tarnocai, C., and Stolbovoy, V.: Northern peatlands: Their characteristics, development and
22 sensitivity to climate change, in: Peatlands: Evolution and records of environmental and
23 climate changes edited by: Martini, I. P., Martinez Cortizas, A., and Chesworth, W., Elsevier,
24 Amsterdam, 17-51, 2006.

25 Tarnocai, C., Canadell, J. G., Schuur, E. A. G., Kuhry, P., Mazhitova, G., and Zimov, S.: Soil
26 organic carbon pools in the northern circumpolar permafrost region, Global Biogeochemical
27 Cycles, 23, GB2023, 10.1029/2008GB003327, 2009.

28 Taylor, A. E., Dallimore, S. R., and Judge, A. S.: Late Quaternary history of the Mackenzie–
29 Beaufort region, Arctic Canada, from modelling of permafrost temperatures. 2. The

- 1 Mackenzie Delta–Tuktoyaktuk Coastlands, *Canadian Journal of Earth Sciences*, 33, 62-71,
2 10.1139/e96-007, 1996.
- 3 Turetsky, M. R., Kane, E. S., Harden, J. W., Ottmar, R. D., Manies, K. L., Hoy, E., and
4 Kasischke, E. S.: Recent acceleration of biomass burning and carbon losses in Alaskan forests
5 and peatlands, *Nature Geoscience*, 4, 27-31, 10.1038/ngeo1027, 2011.
- 6 Ulrich, M., Grosse, G., Strauss, J., and Schirrmeister, L.: Quantifying wedge-ice volumes in
7 yedoma and thermokarst basin deposits, *Permafrost Periglacial Process.*, 10.1002/ppp.1810,
8 2014.
- 9 Walker, H. J.: Arctic deltas, *Journal of Coastal Research*, 14, 718-738, 1998.
- 10 Yi, S., Manies, K., Harden, J., and McGuire, A. D.: Characteristics of organic soil in black
11 spruce forests: Implications for the application of land surface and ecosystem models in cold
12 regions, *Geophys. Res. Lett.*, 36, L05501, 10.1029/2008gl037014, 2009.
- 13 Yu, Z. C.: Northern peatland carbon stocks and dynamics: A review, *Biogeosciences*, 9,
14 4071-4085, 10.5194/bg-9-4071-2012, 2012.
- 15 Zimov, S. A., Davydov, S. P., Zimova, G. M., Davydova, A. I., Schuur, E. A. G., Dutta, K.,
16 and Chapin, F. S.: Permafrost carbon: Stock and decomposability of a globally significant
17 carbon pool, *Geophys. Res. Lett.*, 33, L20502, 10.1029/2006GL027484, 2006.
- 18 Zubrzycki, S., Kutzbach, L., Grosse, G., Desyatkin, A., and Pfeiffer, E. M.: Organic carbon
19 and total nitrogen stocks in soils of the Lena river delta, *Biogeosciences*, 10, 3507-3524,
20 10.5194/bg-10-3507-2013, 2013.

21

22

23

24

25

26

27

28

29

1 Table 1. Summary of number of available pedons (with > 1 m data) in areas with thick and
 2 thin sedimentary overburden for soil taxa from different regions (regional subdivision
 3 following NCSCD database structure) in the northern circumpolar region.

<i>Soil order</i>	<i>Soil types (n of pedons at 1 to 2 m / 2 to 3 m depths)</i>							
	<i>Gelisols</i>			<i>Histosols</i>	<i>Alfisols</i>	<i>Entisols</i>	<i>Inceptisols</i>	<i>Spodosols</i>
	<i>Soil suborder</i>	<i>Histels</i>	<i>Turbels</i>	<i>Orthels</i>				
	<i>Thick sediment</i>							
<i>NCSCD region¹</i>								
Alaska	27/27	52/8	27/8	1/1	-	8/1	37/8	2/-
Canada	30/29	4/3	5/3	6/6	2/2	3/1	9/5	-
Greenland	-	-	-	-	-	-	-	-
Scandinavia/Svalbard	1/1	-	2/2	-	-	-	-	-
Russia	89/89	22/14	27/21	60/60	-	1/1	2/-	4/1
<i>Thick sed. sum:</i>	147/146	78/25	61/34	67/67	2/2	12/3	48/13	6/1
	<i>Thin sediment</i>							
<i>NCSCD region¹</i>								
Alaska	4/4	1/-	2/-	5/5	-	8/-	8/-	6/-
Canada	26/26	3/2	1/-	2/2	3/3	-	1/-	-
Greenland	-	-	3/-	-	-	-	-	-
Scandinavia/Svalbard	-	-	-	-	-	-	-	-
Russia	5/4	2/-	-	1/1	-	1/1	7/7	-
High Arctic ²	1/1	1/1	6/2					
<i>Thin sed. sum:</i>	36/35	7/3	12/3	8/8	3/3	9/1	16/7	6/-
<i>Total sum:</i>	183/181	85/28	73/37	75/75	5/5	21/4	64/20	12/1

4 ¹ There are no pedons in the NCSCD regions: Contiguous U.S.A., Mongolia, Iceland or
 5 Kazakhstan. ² A total of eight Gelisol pedons from thin sediment regions were used separately
 6 to upscale soils of High Arctic tundra soils (five from Greenland and three from Canada).

7
 8
 9
 10
 11
 12
 13
 14
 15
 16
 17

1 Table 2. Summary of mean SOC storage in different depth ranges of the soil upscaling classes
 2 for the upscaling regions applied in this study. Numbers for soils above 1 m depth are based
 3 on pedon dataset 1 while numbers for soils from 1 to 3 m depth are based on pedon dataset 2.
 4 Note that for soils below 1 m depth all non-permafrost mineral soils (Non-pf. min.) are
 5 combined in one upscaling class. Per our definition of High Arctic soils, these soils are not
 6 found in physiographic regions with thick sedimentary overburden.

Region:	Circumpolar		Thick sediment		Thin sediment	
Depth range:	0 to 0.3 m	0 to 1 m	1 to 2 m	2 to 3 m	1 to 2 m	2 to 3 m
<i>Soil class:</i>	<i>SOC storage ± 95% CI (kg C m⁻²)</i>					
Alfisols	4.7 ± 0.4	7.9 ± 0.7				
Entisols	1.1 ± 0.8	7.7 ± 1.7				
Inceptisols	4.9 ± 0.2	9.5 ± 0.4				
Spodosols	11.7 ± 2	21.3 ± 5				
Natric soils	2.9 ± 0.6	10.6 ± 2.2				
Aquic soils	9.2 ± 0.4	16.8 ± 0.7				
Vertisols	5.7 ± 2.1	13.5 ± 4.9				
Mollisols	6.4 ± 0.4	12.2 ± 0.7				
Aridisols	1.6 ± 1.8	1.7 ± 5.4				
Andisols	11.4 ± 0.4	25.4 ± 0.2				
Ultisols	5.1 ± 1.2	9.4 ± 3.2				
Non-pf. min.			9.5 ± 3.3	10.3 ± 3.3	9.1 ± 4.6	0.5 ± 0.6
Histosols	22.5 ± 0.5	69.1 ± 0.9	58 ± 9	29.8 ± 9	95.7 ± 43.4	46.1 ± 44.2
Turbels	14.7 ± 1.5	33 ± 3.5	23.2 ± 4.1	20.1 ± 4.1	31.6 ± 33.1	19.5 ± 17.5
Orthels	15.8 ± 2.6	25.3 ± 4.1	27 ± 9.5	21.6 ± 9.5	2.6 ± 2	1.3 ± 16.9
Histels	18.1 ± 3	49.3 ± 8.4	43.6 ± 5.1	24.8 ± 5.1	49 ± 9.2	30.5 ± 8.8
High Arctic	9.8 ± 7.4	17.8 ± 11			6.9 ± 6.7	2.8 ± 5.6

7
 8
 9
 10
 11
 12
 13
 14

1 Table 3. Summary of estimated soil area and SOC stocks (with $\pm 95\%$ CI where available)
 2 subdivided into physiographic regions of thick and thin sedimentary overburden (following
 3 Brown et al., 2002), the High Arctic region and summarized for the northern circumpolar
 4 permafrost.

	Thick sediments	Thin sediments	High Arctic region	Circumpolar
Soil area (km ²):	6.2×10 ⁶ (35%)	10.6×10 ⁶ (59%)	1.0×10 ⁶ (6%)	17.8×10 ⁶
SOC stocks (Pg):				
0 to 0.3 m	90	117	10 ± 3	217 ± 12
0 to 1 m	213	235	24 ± 8	472 ± 27
1 to 2 m	161 ± 14	187 ± 79	7 ± 5	355 ± 81
2 to 3 m	119 ± 16	86 ± 39	3 ± 3	207 ± 42
0 to 2 m	374	422	31 ± 13	827 ± 108
0 to 3 m	493	507	34 ± 16	1034 ± 150

5
 6
 7
 8
 9
 10
 11
 12
 13
 14
 15
 16
 17
 18
 19
 20
 21
 22

1 Table 4. Summary of areal coverage (% of total permafrost region coverage) and total
 2 estimated SOC stocks (with % of total) of soil upscaling classes with reduced thematic
 3 resolution.

Soil classes	Area km ²	SOC stocks in 0 to 3 m Pg
Turbels ¹	5.5 (31%)	454 (44%)
Orthels ¹	2.3 (13%)	92 (9%)
Histels ¹	1.2 (7%)	147 (14%)
High Arctic soils ²	1.1 (6%)	34 (3%)
High Arctic Turbels	0.7 (4%)	22 (2%)
High Arctic Orthels	0.2 (1%)	6 (0.6%)
High Arctic Histels	0.2 (1%)	6 (0.6%)
Gelisols sum: ³	10.1 (57%)	727 (70%)
Histosols	0.9 (5%)	149 (14%)
Non-Gelisols, mineral	6.8 (38%)	158 (15%)
Total	17.8 × 10 ⁶ km ²	1035 Pg

4 ¹ Applies to Gelisol suborders outside of the High Arctic region. ² A very small fraction
 5 (<1%) of the High Arctic is mapped as non-Gelisols but these soils are equally subdivided to
 6 Gelisol suborders here. ³ Note that this class is not used in upscaling and is included here for
 7 summative purposes only.

8

9

10

1 Table 5. Summary of input data and estimated total volume of alluvium and SOC stocks in major, permafrost-affected Arctic river deltas. In
 2 the cases where a parameter is taken from a map that reports ranges of data, the values used for calculations are given in brackets. For the
 3 estimated volume of alluvium, the fraction of alluvium that is perennally frozen is given in brackets.

River name	Delta area ^a (km ²)	Depth of alluvium (m)	Water bodies coverage (%)	Permafrost extent ^h (% value used for calculations)	Ground-ice content (%) ^h (% value used for calculations)	Alluvium SOC density mean± SD, kg C m ⁻³ (n, sampling depth range)	Volume of alluvium, km ³ (% in permafrost)	Alluvium SOC stock, Pg (±95% CI)
Lena	32,000							
Active floodplain	13,203 ^g	60	31 ^k	Continuous (90)	>20 (25)	11.6±7.6 (n=7, 50–100 cm) ^k	651 (92)	8
First terrace	7,117 ^g	60	31 ^k	Continuous (90)	>20 (25)	29.9±15.1 (n=22, 50–100 cm) ^k	351 (92)	10
Second terrace	9,120 ^g	60 ^b	31 ^k	Continuous (90)	>20 (25)	8.3±6.9 (n=3, 0–409 cm) ^j	450 (92)	4
Third terrace	2,560 ^g	40 ^f	NA ^o	Continuous (90)	>20 (25)	8.3±6.9 ⁿ	97 (90)	0.8
Mackenzie	13,000	48 ^d	41 ⁱ	35–65% ^c (50)	5–15 (10) ^c	56.2±8.4 ^e (n=5, 2–200 cm)	609 (51)	34
Yana	6,600	54 ^l	36 ^l	Continuous (90)	>20 (25)	25.8±18.8 ^l	285 (91)	7
Indigirka	5,000	54 ^l	36 ^l	Continuous (90)	>20 (25)	25.8±18.8 ^l	216 (91)	5
Yenisey	4,500	54 ^l	36 ^l	Continuous (90)	10–20 (15)	25.8±18.8 ^l	201 (91)	5
Kolyma	3,200	54 ^l	36 ^l	Continuous (90)	>20 (25)	25.8±18.8 ^l	138 (91)	4
Ob	3,200	54 ^l	36 ^l	Continuous (90)	10–20 (15)	25.8±18.8 ^l	143 (91)	4
Pechora	3,200	54 ^l	36 ^l	Continuous (90)	<10 (5)	25.8±18.8 ^l	148 (90)	4
Yukon	3,000	54 ^l	36 ^l	Continuous (90)	10–20 (15)	25.8±18.8 ^l	134 (91)	3
Pyasina	1,000	54 ^l	36 ^l	Continuous (90)	>20 (25)	25.8±18.8 ^l	43 (91)	1
Colville	600	54 ^{ll}	36 ^l	Continuous (90)	<10 (5)	21.2±3.8 (n=4, 55–270 cm) ^m	28 (90)	0.6
Olenek	500	54 ^l	36 ^l	Continuous (90)	>20 (25)	25.8±18.8 ^l	22 (91)	0.5
Sum / mean	75,800 km ²	54 m	34%	83%	19%	26.0 kg C m ⁻³	3,514 (84%)	91 ±52 Pg

1 ^a If nothing else is stated, delta areas are from Walker (1998). Refers to sub-aerial delta area. Note that subsea deltaic deposits or deltaic
2 deposits covered under other deposits are not included in the current estimate. ^b Schwamborn et al. (2000), *in* Schwamborn et al. (2002).
3 ^c Heginbottom (2000). ^d Mean calculated between the depth range 10-30 m (Aylsworth et al., 2000), ≥ 56 m (Smith et al., 2005), 50 m
4 (Tarnocai et al., 2009), 55 m (Johnston and Brown, 1965) and 58 m (Taylor et al., 1996). ^e Tarnocai et al., (2009). ^f Assumed to be 60 m
5 (Schwamborn et al., 2002) minus a 20 m Ice Complex coverage (Schirrmeister et al., 2011b). ^g Calculated based on proportional cover of
6 geomorphic units reported by Zubrzycki et al. (2013) and references therein, assuming uniform water surface area distribution across the delta.
7 ^h If nothing else is stated, permafrost extent and ground ice contents are from Brown et al., (2002). Ground ice content refers to segregation
8 ice, injection ice and reticulate ice. Values are assumed to be valid for the upper 15 m of alluvium below which there is assumed to be no
9 massive ice. ⁱ Smith (2011). ^j Schirrmeister et al., (2011b). ^k Zubrzycki et al. (2013). ^l Calculated mean from those delta regions where data is
10 available. ^m Calculated based on data from Ping et al. (2011). ⁿ The fluvial sands underlying the third terrace Ice Complex deposit is assumed
11 to have similar characteristics to the fluvial deposits in the second terrace (Schirrmeister et al., 2011b). ^o Not applicable, surface is covered by
12 Ice Complex and not included in calculations. ^p $\pm 95\%$ CI range are the combined uncertainties from estimates of mean alluvium SOC content
13 (± 18 Pg) and from estimates of mean alluvium depth (± 49 Pg). Both estimates include representation error (see method section for details).

1 Table 6. Summative comparison of permafrost SOC stocks between the previous estimates in
 2 Tarnocai et al. (2009) and this study.

Soil organic carbon stocks	Tarnocai et al. (2009) Pg (% of region total)	This study Pg (% of region total)	Difference Pg
<i>Soils in the 0 to 3 m depth range</i>			
Turbels	581 (35%)	476 (36%)	-105
Orthels	53 (3%)	98 (7%)	+45
Histels	184 (11%)	153 (12%)	-31
Sub-total Gelisols	818 (49%)	727 (56%)	-91
Gelisols in permafrost ¹	692 (41%)	572 (44%)	-120
Histosols	94 (6%)	149 (11%)	+55
Non-Gelisols, mineral	112 (7%)	158 (12%)	+46
Total for 0 to 3 m soils	1024 (61%)	1035 (79%)	+11
<i>Deposits below 3 m depth</i>			
Deltaic alluvium	241 (14%)	91 (7%)	-150
Yedoma region	407 (24%)	181 (14%)	-226
<i>Combined SOC in soils (0 to 3 m), deltaic alluvium and Yedoma region sediments</i>			
In permafrost terrain ²	1466 (88%)	977 (75%)	-489
In permafrost ¹	1134 (68%)	822 (63%)	-312
Total permafrost region	1672	1307	-365

3 ¹ Estimated assuming an active layer depth of 30 cm or more in all Gelisols/High Arctic soils,
 4 following the methodology of Kuhry et al. (2013). ² Defined as storage in Gelisols/High
 5 Arctic soils and in permafrost in Yedoma or permafrost deltaic deposits below 3 m depth.

6

7

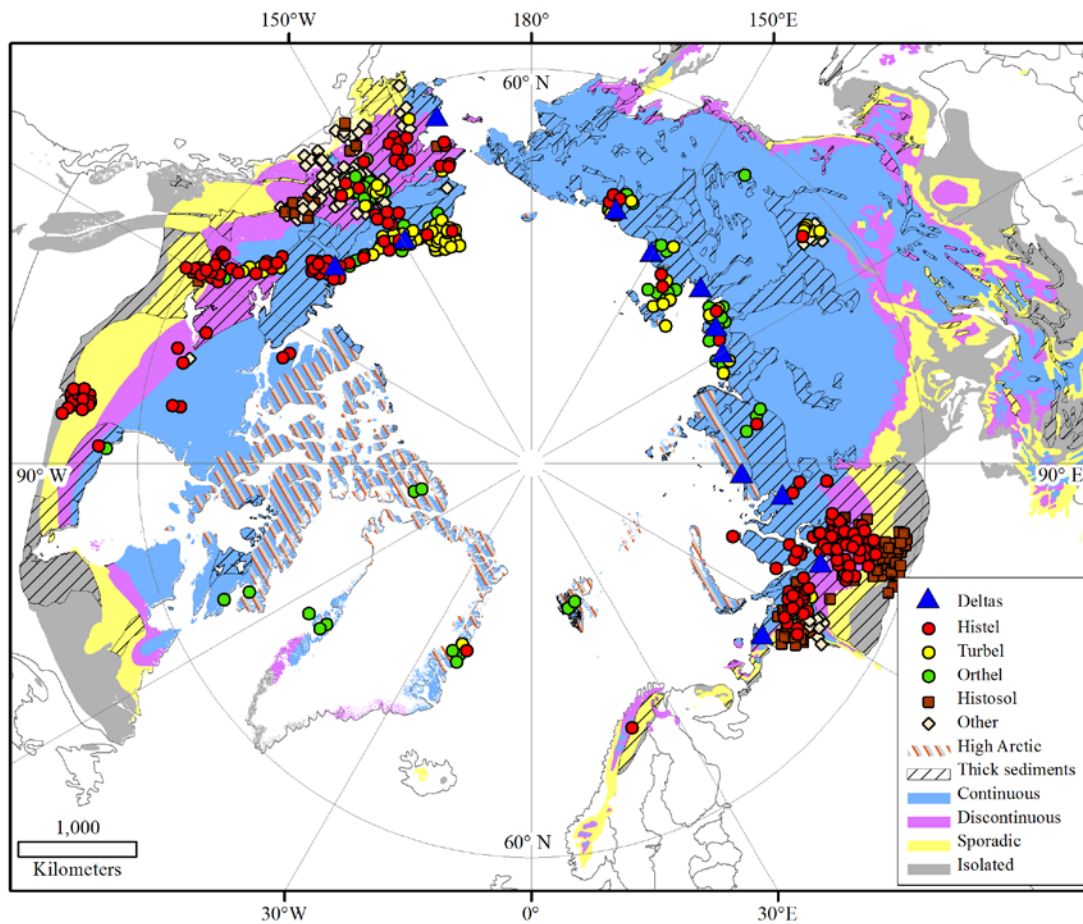
8

9

10

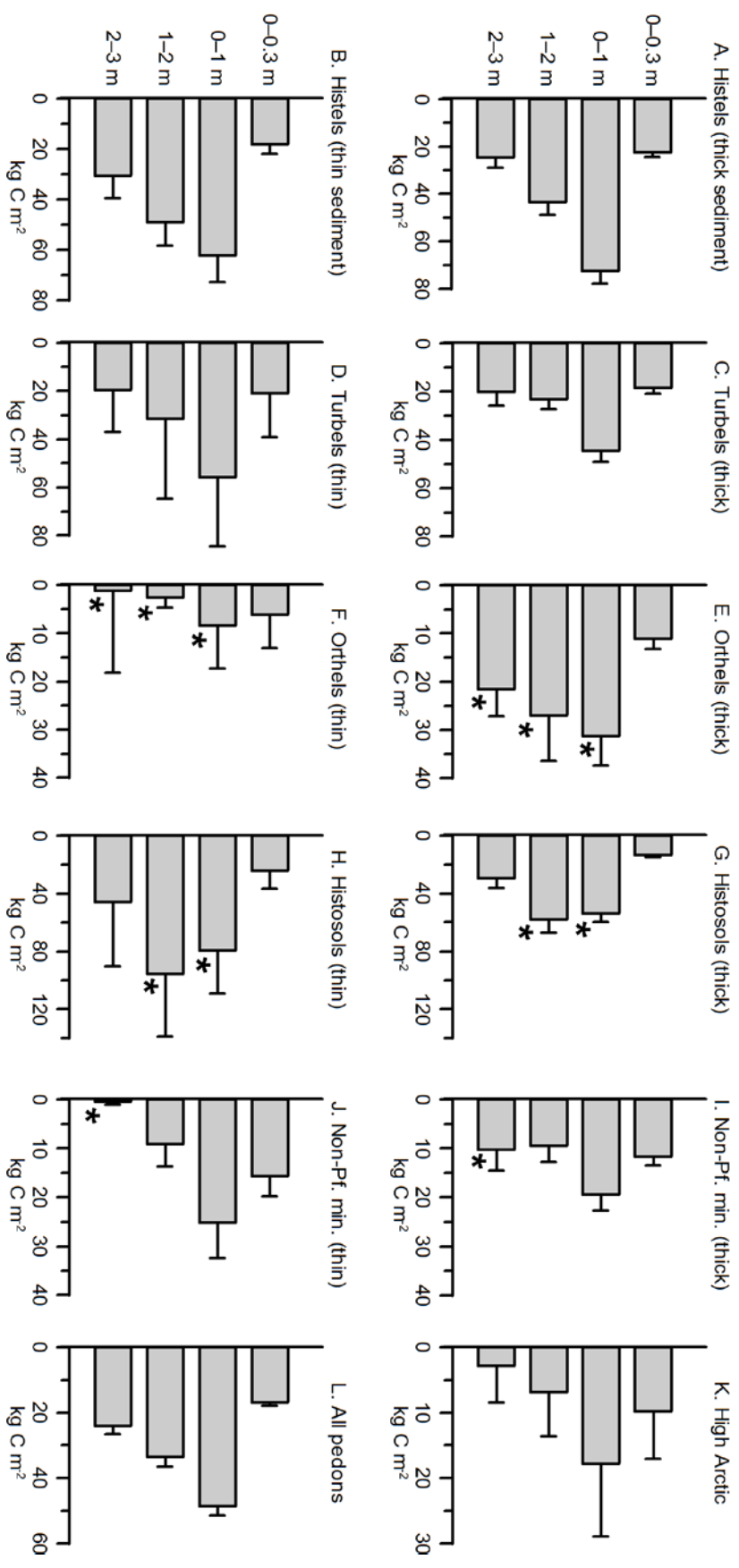
11

1 Figures



2

3 Figure 1. Geographical distribution of regions with thick sedimentary overburden and
4 permafrost zonation in the northern circumpolar permafrost region (Brown et al., 2002). Map
5 shows locations of the included Arctic river deltas as well as pedons with data in the 0 to 3 m
6 depth range (pedon dataset 2), grouped according to NCSCDv2 upscaling classes. Exact
7 pedon locations have been manipulated for cartographic representation; projection: Azimuthal
8 Equidistant, datum: WGS84. Adapted from Hugelius et al. (2013a).

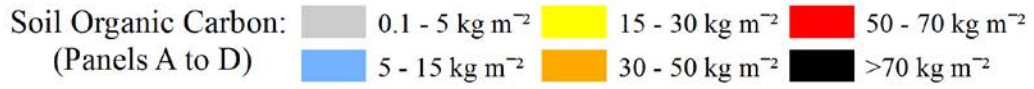
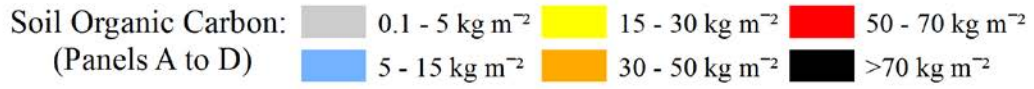


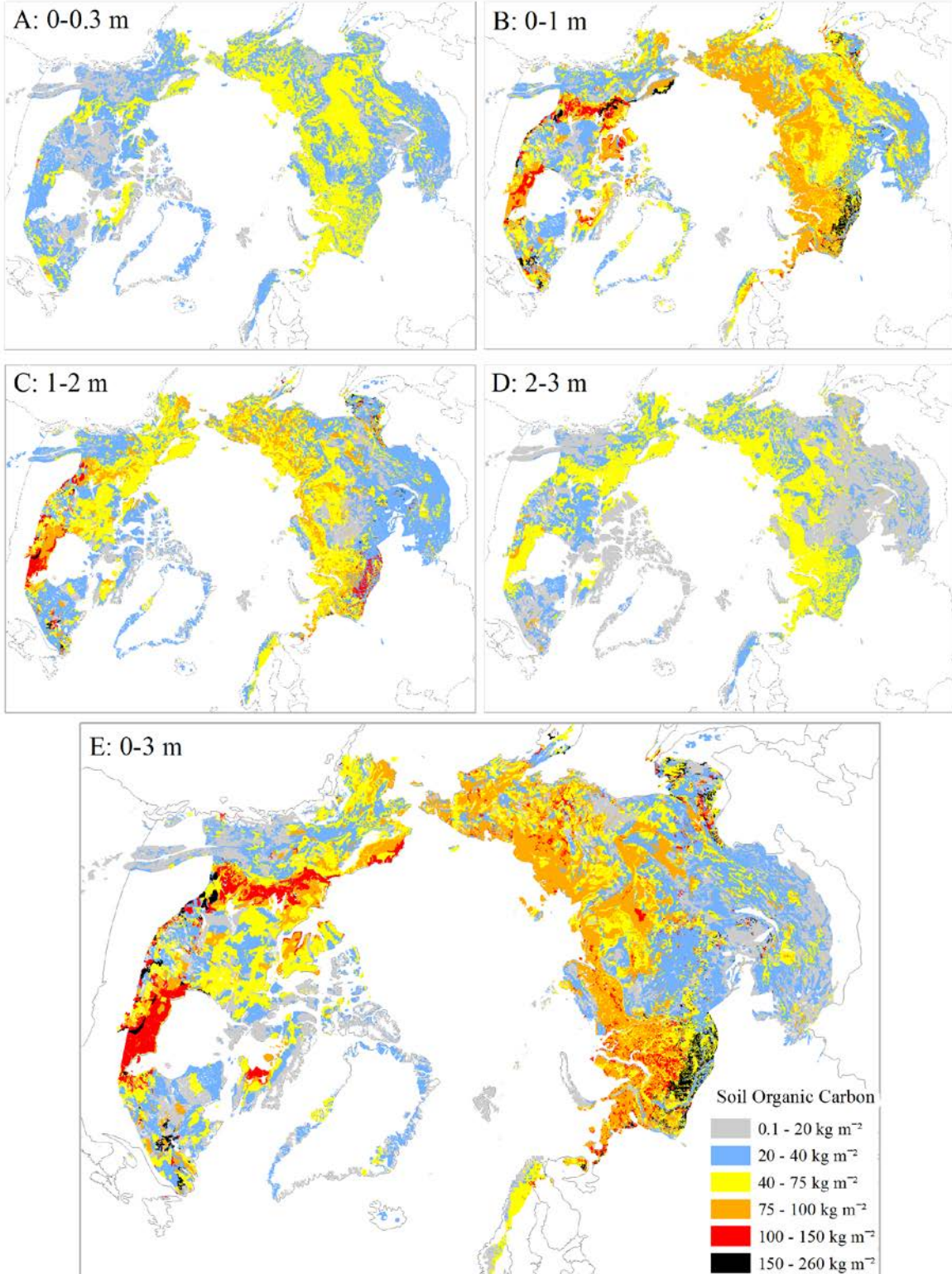
1
2
3
4
5
6
7
8
9
10
11
12
13
14
15
16
17
18
19
20
21
22
23
24
25
26
27

Figure 2. Mean SOC storage (kg C m^{-2}) with error bars showing 95% confidence intervals of the mean, for different soil upscaling classes calculated using pedon dataset 2. Different panels A to J show SOC storage estimates for the different depth ranges in areas of thick and thin sedimentary overburden, respectively. Panels K and J show mean SOC storage for the High Arctic region and for all pedons grouped together. Asterisks mark depth intervals in soil upscaling classes where SOC storage is significantly different from the equivalent interval in the other region (t-test, $p < 0.05$).

1

2

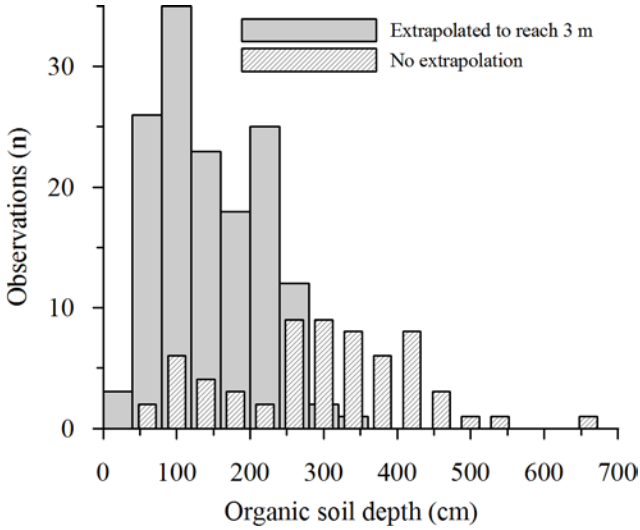
Soil Organic Carbon:  0.1 - 5 kg m⁻² 15 - 30 kg m⁻² 50 - 70 kg m⁻²
(Panels A to D)  5 - 15 kg m⁻² 30 - 50 kg m⁻² >70 kg m⁻²



3

1
2
3
4
5
6
7

Figure 3. Map of estimated 0 to 3 m SOC storage (kg C m^{-2}) in the northern circumpolar permafrost region. Panels show 0 to 0.3 m and 0 to 1 m SOC calculated subdivided following NCSCD regions while 1 to 2 m and 2 to 3 m SOC is calculated subdivided for areas of thick thin sedimentary overburden. Projection: Azimuthal Equidistant, datum: WGS84.



8
9
10
11
12

Figure 4. Histograms illustrating the depth-distribution of peat deposits (organic soil material) in Histosols and Histels of pedon dataset 2 (bins= 40 cm depth). The graph shows separate histograms for pedons that were extrapolated to reach the full 3 m depth required for upscaling and pedons where no extrapolation was needed.