

Third round of reviews for the manuscript (*bg-2014-123*): TWO PERSPECTIVES ON THE COUPLED CARBON, WATER, AND ENERGY EXCHANGE IN THE PLANETARY BOUNDARY LAYER.

We would like to thank Reviewer 3 for his very positive opinion of our manuscript. Below, we provide a point-by-point response to the Reviewer's comments in bold-face. We have introduced improvements to the manuscript, which are shown in the Latexdiff version attached at the end of this response.

Short general comment from Reviewer 3:

The paper addresses important questions that are relevant to the wide community of land-surface and carbon cycle modelling, addressing two important questions regarding the relative contribution of different processes in the energy, water and carbon budgets as well as the complexity required for simulating the coupling. I find the paper well written and the interpretation of the results is sound. However, I think the paper would benefit from emphasizing and/or clarifying some of the conclusions. Please see the comments in the report.

We agree with Reviewer 3 that the conclusions and the abstract can benefit from a few clarifications indicated by the Reviewer in his/her report. We respond to each suggestion below.

General comments from the report:

This paper investigates the coupling between water, energy and carbon cycles using two different types of land surface models based meteorological surface-exchange (A-gs) and Carbon-storage vegetation (GECROS crop model) perspectives, both coupled to the same atmospheric mixed layer model in order to assess the contribution from different processes/forcings on the budgets of water, energy and carbon over a maize field.

The paper addresses important questions that are relevant to the wide community of land- surface and carbon cycle modelling.

We thank the Reviewer for his acknowledgement of the relevance of our study.

The first question regarding the contribution of upper and surface processes on the different budgets is addressed with sensitivity experiments at the surface and upper atmospheric boundaries by reducing soil moisture and increasing large-scale subsidence. The experiments show that both forcings can play an equally important role. They both change the latent heat fluxes (increasing/decreasing for enhanced subsidence/soil moisture depletion forcings respectively) and reduce the water use efficiency with the same magnitude via different mechanisms. Despite atmospheric and surface forcings being equally important on the energy and water surface fluxes, for the carbon cycle the story is different. The reason for this being that NEE is only significantly affected by the change in soil moisture via changes in the stomatal conductance. This is because there is no stomatal response to the increasing vapour pressure deficit in the higher subsidence case. Is this a realistic assumption?

The suggestion that there is no response to VPD in the high subsidence case is based on a misunderstanding. The stomatal conductance formulation of A-gs is dependent on VPD, as shown in Fig 1 of this response, and as described in Jacobs et al. (1996). In the high subsidence case, VPD does slightly increase (by 9%, i.e. +0.2 kPa, at 14:00 UTC). It generates a small increase in the (ci-ca) gradient (+ 8 ppm at 14:00 UTC), which is compensated by a small decrease in the canopy conductance for CO₂ transfer (-0.3 mm s⁻¹ at 14:00 UTC). Thus, there is no visible response of NPP to the small increase in VPD.

For clarification, we added the reference of Jacobs et al. (1996), and the following sentence to the description of the model on page 12: "In A-gs, the upscaled canopy conductance (g_c) is hence calculated as a function of light, temperature, of the stomata to atmospheric CO₂ concentration ratio, of VPD, soil water stress, and of LAI." We also explain why the small increase in VPD does not have an impact on NPP under high subsidence on page 20 and 21 (see the enclosed revised manuscript).

The results from the two sensitivity experiments show that the variation of atmospheric CO₂ is much larger for the increased subsidence than for the reduced soil moisture, despite subsidence having no impact significant impact on NEE; whereas soil moisture decrease does have a larger impact on NEE. This is because the changes in the subsidence and soil moisture lead to changes of a few percent in the CO₂ fluxes at the surface and mixed layer top (via NEE and entrainment); while the change of the mixed layer height is around 40% for increased

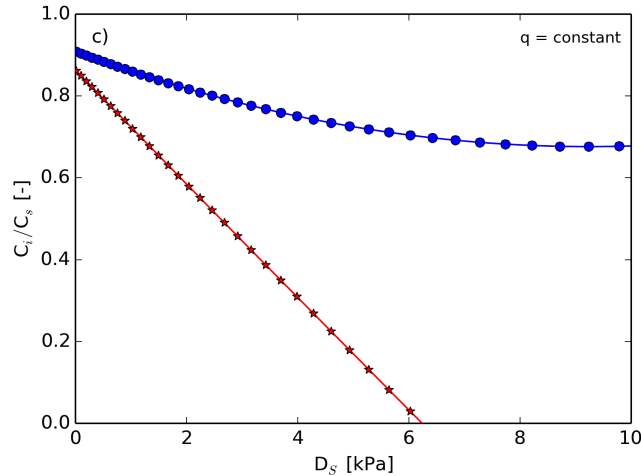


Figure 1: Response of the C_i/C_a ratio to VPD (i.e. D_s) in the A-gs model (Jacobs et al., 1996). The C3 plants are shown with blue dots and C4 with red stars.

subsidence and only a few percent for the decreased soil moisture. Is this large change in the mixed layer height realistic?

The high value of subsidence used in our sensitivity analysis ($w_s = 4 \times 10^{-5} \text{ s}^{-1}$, so about 4 cm s^{-1} if we consider an ABL of a 1000 m) is a value characteristic of large high pressure system situations. It is realistic because it can occur over land in the Netherlands. As a consequence, the related 40% reduction in the ABL height is also realistic. However, we agree with the reviewer that this is not a frequent situation.

If so, it emphasizes the importance of having an accurate upper atmospheric forcing when interpreting the variability of atmospheric CO_2 . I think the higher sensitivity of the upper forcing on the change in the mixed layer height compared to the change in the surface fluxes should be emphasized as it is of key importance in order to understand/explain the variability of CO_2 in the well-mixed daytime planetary boundary layer.

We added emphasis on the importance of using correct estimates of the large-scale forcings for the daytime CO_2 budget in the conclusion: *“Therefore, ABL dynamics need to be considered when interpreting observations of atmospheric CO_2 mole fractions over crops. Using correct estimates of the large-scale forcings are also of key importance.”*

Another interesting result from this study is that both NEE and entrainment fluxes play an equally important role in the evolution of the CO_2 in the mixed layer. These results confirm the challenging task that flux inversion systems face in order to be able to retrieve the surface fluxes of CO_2 from the observed atmospheric CO_2 in the planetary boundary layer.

The second question addressed is on the complexity of the models required to simulate interactions of a cropland with the atmosphere. Although the evaluation shows that the A-gs outperforms the crop model on a specific day, I think the comparison is not completely fair. The outperformance of A-gs depends on the tuning using atmospheric and land surface observations for a specific site and day. The comparison might lead to different results if the A-gs was adapted to run over longer time scales than one day without the observed forcings (e.g. within a climate model). This is already mentioned in the conclusions, but perhaps it should be more clearly stated in the abstract.

We agree with the Reviewer that a seasonal scheme like GECROS is of course more difficult to “tune right” for one specific day than a diurnal scheme like A-gs. This difference of scales between the two models we use is indeed one of the aspects determining the outcome of the models intercomparison. We do emphasize this in the conclusions. In addition, and as suggested by the reviewer, we added a sentence in the abstract mentioning this aspect: *“We show [MXL-A-gs] outperforms [MXL-GECROS]. We find this performance is partly due to the difference of scales at which the*

models were made to run for. But most important, this performance strongly depends on the sensitivity of the modelled (...) water stress."

Although the study concentrates on a single site and a single day, it uses an impressive comprehensive set of observations to assess all the relevant model parameters for the water, energy and carbon cycles. Moreover, such coupling and sensitivity studies require specific conditions, when boundary layer is well mixed and advection is not strong in order to minimize the interference of non-local effect. The experiments and interpretation are both sound and the mechanisms that play a role in the experiments are well explained.

We agree with the Reviewer that a strong component of our research is the comprehensive observational dataset we use. We thank him/her for this acknowledgement.

Specific comments:

C1: Figure 2: The importance of having a two way coupling compared to one way coupling is only shown with the GECROS model. It would have been interesting to also do the comparison with the A-gs on 4 August 2007.

We are not sure if we interpret the remark of the Reviewer correctly. For the sake of clarity, we would like to stress that Fig. 2 in the manuscript does not show the importance of the two-way coupling for GECROS. This figure is intended to validate the new version of GECROS (remember we made modifications to the model), before fully coupling it with the MXL model. If the Reviewer means to say that a validation of the uncoupled A-gs would add value to our manuscript, then we would like to point that such validation has been done for grapevine by Jacobs et al. (1996), and for C3 and C4 grass and soybean by Ronda et al. (2001). We added this information to the manuscript in the methods section.

C2: Section 2.3: How is CO₂ initialised in the boundary layer and free troposphere for the simulations on 4 August 2007?

The ABL CO₂ mole fraction is initialized at 422 ppm, with an initial jump of -50 ppm and a lapse rate of -10 ppb m⁻¹, based on the typical values published in Casso-Torralba et al. (2008), and in order to reproduce the observed daytime CO₂ decrease. These initial values are specified in the appendix Table A1, as indicated in the text.

C3: I find the term "diurnal" throughout the paper a bit confusing. This study is limited to the daytime well-mixed boundary layer. I think it would be clearer if "daytime" was used instead of or together with "diurnal".

We agree with the reviewer and replaced the term "diurnal" by the term "daytime" in our manuscript, except in combination of the words "scale", "cycle", or "scheme"/"model". For the exceptions, we add the word "daytime" in front of "diurnal" when relevant.

C4: Section 3.3 Are the changes in atmospheric CO₂ of 12 ppm in the high subsidence case forcing changes in NEE via the CO₂ gradient term in equation 3? If so, the impact from the increased subsidence seems to show that there is a very small sensitivity.

As specified in the manuscript on page 23, the 12 ppm decrease in CO₂ generated by subsidence is due to the reduction in ABL height, which increases the surface and entrainment CO₂ tendencies even though the surface CO₂ flux does not change and the entrainment flux is lower.

NPP does not vary under high subsidence, as we explained earlier in this response, because the (Ci-Ca) CO₂ gradient and g_s have small opposite responses, which compensate each other.

C5: Figure 9: What do you mean by instantaneous change in boundary-layer height in the computation of CO₂ tendencies? Should it not be instantaneous value instead?

We agree with the Reviewer that this part of the sentence is incorrect. We replaced the "instantaneous change in boundary-layer height" with just "boundary-layer height".

References

- Casso-Torralba, P., Vilà-Guerau de Arellano, J., Bosveld, F., Soler, M. R., Vermeulen, A., Werner, C., and Moors, E.: Diurnal and vertical variability of the sensible heat and carbon dioxide budgets in the atmospheric surface layer, *J. Geophys. Res.*, 113, D12119, 2008.
- Jacobs, C. M. J., van den Hurk, B. M. M., and de Bruin, H. A. R.: Stomatal behaviour and photosynthetic rate of unstressed grapevines in semi-arid conditions, *Agr. Forest Meteorol.*, 80, 111–134, 1996.
- Ronda, R. J., De Bruin, H., and Holtslag, A.: Representation of the canopy conductance in modeling the surface energy budget for low vegetation, *J. Appl. Meteorol.*, 40, 1431–1444, 2001.

Two perspectives on the coupled carbon, water, and energy exchange in the planetary boundary layer

M. Combe¹, J. Vilà-Guerau de Arellano¹, H. G. Ouwersloot², C. M. J. Jacobs³, and W. Peters^{1,4}

¹Department of Meteorology and Air Quality, Wageningen University, Wageningen, the Netherlands

²Max Planck Institute for Chemistry, Mainz, Germany

³Climate change and Adaptive land and water management, Alterra Wageningen UR, Wageningen, the Netherlands

⁴Centre for Isotope Research, Groningen University, Groningen, the Netherlands

Correspondence to: M. Combe (marie.combe@wur.nl)

Abstract

Understanding the interactions between the land surface and the atmosphere is key to model boundary-layer meteorology and cloud formation, as well as carbon cycling and crop yield. In this study we explore these interactions in the exchange of water, heat, and CO_2 in a cropland-atmosphere system at the diurnal and local scale. We thereto couple an atmospheric mixed-layer model (MXL) to two land-surface schemes, developed from two different perspectives: while one land-surface scheme (A- g_s) simulates vegetation from an atmospheric point of view, the other (GECROS) simulates vegetation from a carbon-storage point of view. We calculate surface fluxes of heat, moisture and carbon, as well as the resulting atmospheric state and boundary-layer dynamics, over a maize field in the Netherlands, for a day on which we have a rich set of observations available. Particular emphasis is placed on understanding the role of upper atmosphere conditions like subsidence, in comparison to the role of surface forcings like soil moisture. We show that the atmospheric-oriented model (MXL-A- g_s) outperforms the carbon storage-oriented model (MXL-GECROS) on this diurnal scale. **This performance** We find this performance is partly due to the difference of scales at which the models were made to run for. But most important, this performance strongly depends on the sensitivity of the modelled stomatal conductance to water stress, which is implemented differently in each model. This sensitivity also influences the magnitude of the surface fluxes of CO_2 , water and heat (surface control), and subsequently impacts the boundary-layer growth and entrainment fluxes (upper atmosphere control), which alter the atmospheric state. These findings suggest that observed CO_2 mole fractions in the boundary layer can reflect strong influences of both the surface and upper atmospheric conditions, and the interpretation of CO_2 mole fraction variations depends on the assumed land-surface coupling. We illustrate this with a sensitivity analysis where high subsidence and soil moisture depletion, typical for periods of drought, have competing and opposite effects on the boundary-layer height h . The resulting net decrease in h induces a change of 12 ppm in the late afternoon CO_2 mole fraction. Also, the effect of such high subsidence and soil moisture depletion on the surface Bowen ratio are of the same magnitude. Thus, correctly including such two-way land-surface interactions on the diurnal scale can potentially improve

our understanding and interpretation of observed variations in atmospheric CO₂, as well as improve crop yield forecasts by better describing the water loss and carbon gain.

1 Introduction

The land surface and atmosphere interact on many time scales and understanding their exchange of energy, water, carbon, as well as chemical tracers, is key to many research fields including climate modelling (Cox et al., 2013; Sitch et al., 2008), crop yield prediction (Lobell et al., 2011), hydrology (Teuling et al., 2010), atmospheric composition (Bonan, 2008) and meteorology (Vilà-Guerau de Arellano et al., 2012). When the interaction concerns a vegetated surface and the planetary boundary layer overhead, the cycles of carbon, water, and energy are strongly coupled, notably at the surface. Responding to their environment, plants regulate the exchange of CO₂ and water vapor through the opening and closing of their stomata (Jarvis, 1976; Cowan, 1978; Ball, 1988), which in turn impacts the energy partitioning at the surface. This plant control over the carbon, water, and energy exchange plays a key role, especially in climate change studies, which is why the current generation of climate models all include mechanisms to describe the stomatal response of vegetation to changing environmental conditions (Farquhar et al., 1982; Collatz et al., 1991; Leuning et al., 1995; Jacobs et al., 1996). The ongoing rise of temperature and CO₂ concentration are already shown to affect the coupled cycles of water and carbon, as plants have become more efficient in water-use over the past decades (Keenan et al., 2013; Brienen et al., 2011; Silva and Horwath, 2013). Quantitative understanding of these interactions between plants and the atmosphere is therefore needed.

The development of numerical models to describe land–atmosphere interactions is based on two perspectives. While vegetation models focus on carbon accumulation in land-surface types such as forests and crops and treat the atmosphere as a prescribed upper boundary condition, the atmospheric models focus on weather forecast and use the land surface as a prescribed lower boundary condition. The former group includes (dynamic) vegetation models and crop yield models such as LPJ (Sitch et al., 2003), ORCHIDEE-STICS (Smith et al., 2010), and CERES-maize (Bert et al., 2007). The latter includes submodels of numerical weather prediction systems

and atmospheric transport models such as in SiBcrop-RAMS (Corbin et al., 2010), RAMS-Leaf3-5PM (Tolk et al., 2009), and WRF-VPRM (Ahmadov et al., 2007). The next generation of vegetation and atmospheric models integrates both perspectives in two-way interacting land-atmosphere models, in which carbon from the atmosphere is accumulated into vegetation, which in turn feeds back energy, water, and CO₂ to the atmosphere overhead (e.g. the C⁴MIP models HadCM3LC, IPSL-CM4-LOOP, Bern-CC in Cox et al., 2013; Friedlingstein et al., 2006).

Recent studies have analyzed the underlying mechanisms of land-atmosphere interactions and feedbacks, using two-way couplings between the land surface and the planetary boundary layer (Santanello et al., 2013; Mcgrath-Spangler and Denning, 2010; van Heerwaarden et al., 2009). Among them, Vilà-Guerau de Arellano et al. (2012) have clearly demonstrated the importance of how these interactions are described. They showed that future conditions of CO₂ level rise and warming would influence the boundary-layer cloudiness by affecting the plant stomatal aperture and vapor pressure deficit (VPD), thus changing both evapotranspiration and atmospheric humidity. Upper atmosphere conditions, which are connected to large-scale synoptic weather patterns, were suggested to further affect the stomatal response through their control on ~~diurnal~~ the daytime boundary-layer growth and entrainment. Although the Vilà-Guerau de Arellano et al. study only focused on the diurnal and local scale with a relatively simple coupled model, the implications for two-way coupled models operating on much larger and longer scales was evident.

In this study, we continue this approach and analyse the coupling between the heat, moisture and carbon cycles for a maize field. We specifically focus on the diurnal scale, like Vilà-Guerau de Arellano et al. (2012), paying particular attention to the simulation of carbon fluxes, and especially photosynthesis, which have a cumulative impact on crop growth and crop yield at the seasonal scale. We also explore the relative importance of upper atmosphere conditions like subsidence, compared to the role of surface forcings like soil moisture, for the determination of CO₂ mole fractions. We choose to focus on crop-atmosphere interactions because croplands occupy a fifth of the European Union land surface (FAOSTAT 2011 land-use statistics) and are important for food production, but are often not well represented in land-surface models. In Dynamic Global Vegetation Models (DGVM), and in Soil-Vegetation-Atmosphere Transfer

models (SVAT models), they are conceptualized either as natural (e.g. Sitch et al., 2003) or managed grass (e.g. Krinner et al., 2005), and only distinguished by C₃ or C₄ plant photosynthesis. Differences between species of crops in development are often not simulated, but are prescribed using seasonal leaf area index (LAI). Also, nitrogen stress or the effect of management options (fertilization, irrigation, plowing) are often not implemented at all, while they have been shown to have large impact on crop carbon cycling (Ciais et al., 2010; Lehuger et al., 2010; Gervois et al., 2008). In contrast to DGVMs, process-based crop models potentially represent these crop characteristics better (Challinor et al., 2009; Betts, 2005).

In order to investigate the differences between the generic and specialized representation of crop biology, we use a process-based crop yield forecast model, GECROS (Yin and van Laar, 2005), and a more meteorological-oriented, surface–atmosphere exchange model, A-g_s (Ronda et al., 2001). We couple them to the same atmospheric model and compare their ability to reproduce crop-atmosphere interactions. Both models simulate the ~~diurnal~~ daytime carbon, water and heat surface fluxes, with A-g_s more focussed on representing the individual surface energy balance terms. The additional levels of complexity embedded in GECROS are the separation of the effects of diffuse and direct radiation on photosynthesis, the internal calculation of crop LAI, the allocation and storage of carbon into crop organs (leading to crop yield), and the interaction of the carbon and nitrogen cycles (nitrogen stress). We assess both models using a very comprehensive observational dataset from a maize field in the Netherlands (Jans et al., 2010), that includes atmospheric variables (temperature, humidity, radiation), the surface fluxes of CO₂, water and (sensible and ground) heat, the soil temperature and humidity, as well as the seasonal crop development (crop height, LAI, dry matter weight). We combine it with boundary-layer height data from a nearby meteorological station (Cabauw experimental site for atmospheric research, online database available at <http://www.cesar-database.nl>). It is important to stress that these observations were conducted at the same local scale as we simulate (field scale), which is smaller than typically simulated in climate models (i.e. 50 km resolution at minimum). In order to bridge these different scales (Eitzinger et al., 2008; Betts, 2005), we couple both our surface models, GECROS and A-g_s, to a model for the atmospheric boundary layer. This framework

enables us to draw conclusions about the key boundary layer-vegetation interactions, and we use it to answer two research questions:

1. What are the essential processes at the surface and upper atmosphere governing the coupled carbon, water and energy budgets in the ~~diurnal~~daytime crop-atmosphere system?
2. Which modeling perspective can best reproduce these essential processes, and what does it teach us about the level of complexity needed in a daytime diurnal land-surface scheme?

We hypothesize that:

1. In addition to surface processes, entrainment and subsidence are essential processes which determine the carbon, water and energy budgets of the ~~diurnal~~daytime crop-atmosphere system.
2. MXL-GECROS can best reproduce the ~~diurnal~~daytime crop-atmosphere interactions, because of the higher level of crop biology detail embedded in the model.

The next section presents a description of our surface and atmospheric models, as well as of their coupling strategy. We then present our findings, with the full ~~diurnal~~daytime intercomparison of our two coupled models against observations, and a sensitivity analysis of the two-way ~~diurnal~~daytime crop-atmosphere interactions.

2 Methods

2.1 Observations

In order to verify the behavior of the cropland-atmosphere system, we use a comprehensive set of surface exchange, atmosphere, soil and crop growth observations, which were performed in 2007 and 2008 at a maize field located in Wageningen, the Netherlands (see Jans et al., 2010). This dataset consists of half-hourly averages of the sensible and latent heat fluxes, and of CO₂ exchange, obtained with the eddy covariance (EC) technique, and quality-controlled, according

to the protocols described in Aubinet et al. (2012). These EC observations are supported by various continuous micrometeorological measurements in the air and in the soil. In addition to the continuous measurements, this dataset includes soil type, crop management data, as well as intermittent observations of crop height, plant area index – i.e. a proxy for LAI – and the dry weight of crop organs over the growing season. To complete the atmospheric observations from Jans et al., we use the boundary-layer height from the wind profiler measurements of the closest meteorological station, Cabauw, the Netherlands, located approximately 50 km West from the maize site (Cabauw experimental site for atmospheric research, online database available at <http://www.cesar-database.nl>). In the absence of boundary-layer height data for Wageningen, this is the best estimation possible.

Because we want to focus on the diurnal scale to study the interactions and feedbacks of our maize-atmosphere system, we specifically pick one day of observations, the 4 August 2007, which was a sunny, cloudless day, and with a convective atmospheric boundary layer above the maize field. We pick that specific date because our atmospheric boundary-layer model can only reproduce well-mixed boundary layers, but also because we want to avoid sensitive periods of emergence and senescence times for the crop. On the 4 August 2007, our maize crop is in the reproductive stage, at the peak of its growth (see PAI in Fig. 1).

On the 4 August 2007, the continuous measurements show a daytime energy gap of 19% between the net absorbed radiation and the sum of the surface (latent, sensible, and ground) heat fluxes. This energy gap is typical for a crop like maize, mainly due to heat storage (Meyers and Hollinger, 2004). The gap can also be partially generated by photosynthesis, which can proceed at unusually large rates for maize, large-scale heat transport processes, and measurement accuracy (Foken et al., 2010; Foken, 2008). Since the two surface schemes we use assume the closure of the surface energy budget, we allocate the missing energy (or residual) into extra sensible and latent heat in the observations, using the Bowen ratio to determine the partitioning

(see Eq. 1).

$$\text{Flux}_{\text{corrected}} = \text{Flux}_{\text{observed}} + \text{Residual} \times f \quad (1)$$

$$\text{with } f = \begin{cases} \frac{\beta}{1+\beta} & \text{for SH} \\ \frac{1}{1+\beta} & \text{for LE} \end{cases}$$

- 5 This method ensures the observed Bowen ratio is conserved after correction. It has been previously used by Barbaro et al. (2014); Foken (2008); Twine et al. (2000); Beljaars and Bosveld (1997). For reference, we show in Fig. 3 both the observed and corrected fluxes. Note that the corrected fluxes are used in the further model comparisons.

2.2 Models

- 10 In order to study the diurnal-daytime cropland-atmosphere system, we couple two surface schemes, GECROS and A-g_s, to a convective atmospheric boundary-layer scheme, MXL, and analyse their behavior compared to our observations for the 4 August 2007.

2.2.1 MXL, a convective atmospheric boundary-layer scheme

- Our atmospheric boundary-layer scheme is a box model, which describes accurately the development of the diurnal-daytime atmospheric boundary layer (ABL) when turbulence is strong (mixed-layer situation). First studies to develop the concept of a mixed-layer model were done by Lilly (1968); Betts (1973); Carson (1973) and Tennekes (1973). The version used in this paper has been described by Vilá-Guerau de Arellano et al. (2009). The ABL is well-mixed during this daytime and strongly convective regime, thus we consider the instantaneous atmospheric variables assume a single value throughout the whole ABL. The top of the boundary layer is characterized by potential temperature, moisture and CO₂ inversions, simplified as sudden “jumps” or gradients, which sharply separate the ABL state from the free tropospheric profiles. The evolution of the ABL state and height over time is determined by boundary fluxes (surface, entrainment and advection) of heat, moisture and CO₂. Entrainment fluxes are calcu-

lated. The MXL model has been widely tested and is a robust model for sunny days with few to no boundary-layer clouds, all conditions met by the 4 August 2007 over our maize field.

2.2.2 GECROS, a crop yield forecast model

The Genotype-by-Environment interactions on CROp growth Simulator (GECROS) is a land-surface model specialized in crop carbon-storage (i.e. a crop yield forecast model). We use version 1.0, which was released by Yin and van Laar (2005). GECROS is from the two-big leaf family of models initiated by De Pury and Farquhar (1997), which means the crop canopy is simplified as two leaves possessing each one sub-stomatal cavity. One leaf represents the entire sunlit leaf area of the canopy, the other represents the entire shaded leaf area, their proportions evolving with crop age and solar angle. The two big-leaves work in parallel for ~~diurnal~~daytime photosynthetic and transpiration processes. This enables different efficiencies of photosynthesis to happen under diffuse and direct radiation.

On the diurnal scale, GECROS is a crop growth model based on evaporative demand, which means that the potential photosynthesis is first calculated according to the amount of available photosynthetically active radiation, and then it determines the leaf conductance and the potential transpiration. The actual photosynthesis and transpiration are obtained by evaluating the soil water content: if the available soil moisture is higher than the amount of water needed for potential transpiration, GECROS works at full potential level. Otherwise, GECROS transpires solely the available water supply, and reduces its photosynthesis and stomatal conductance accordingly. In addition to water stress, GECROS has a ~~diurnal~~-nitrogen cycle implemented that interacts with the carbon cycle, accounting for nitrogen stress. This last feature did not play a role in our study of crop-atmosphere interactions on the 4 August 2007.

On the seasonal scale, GECROS simulates its own phenological development based on the accumulation of heat (i.e. growing degree-days). Also, it accumulates carbon into the different crop organs (leaves, stems, roots and storage organs), which determines crop yield. Both of these features, typical of a crop model but not of a DGVM or SVAT model, allow interactions and feedbacks between the crop and the atmosphere to change with crop ageing. This is a potential advantage for a seasonal study of the cropland-atmosphere system.

2.2.3 Modifications to GECROS used in this paper and validation

We analyzed the surface energy budget of GECROS and identified two core problems in its original version: (a) the budget of net longwave radiation was faulty, generating too much outgoing longwave radiation and consequently too little energy was retained at the surface, and (b) the calculated VPD was too high because it used the humidity at 2 m instead of inside-canopy humidity, stimulating latent heat too much at the expense of sensible heat. In order for GECROS to have realistic heat fluxes to feed to the MXL model, we implemented the following changes to improve its surface energy balance. First, we replaced the original net longwave radiation budget by a simplified multilayer budget:

$$LW_i = \left(\underbrace{\mathcal{E}_{ATMOS} \times \sigma \times T_{ATMOS}^4}_{\text{Incoming radiation}} - \underbrace{\mathcal{E}_i \times \sigma \times T_i^4}_{\text{Outgoing radiation}} \right) \times F_i \quad (2)$$

$$\text{with } F_i = \begin{cases} f_{veg} & \text{if sunlit leaf } (i = 1) \\ 0 & \text{if shaded leaf } (i = 2) \\ 1 - f_{veg} & \text{if bare soil } (i = 3) \end{cases}$$

\mathcal{E}_{ATMOS} and \mathcal{E}_i are emissivities, T_{ATMOS} and T_i are temperatures, σ is the Stefan–Boltzmann constant and f_{veg} is the vegetation cover fraction. We assume similar blackbody radiation ($\mathcal{E}_1 = \mathcal{E}_2 = \mathcal{E}_3 = 1$) originating from the sunlit-, shaded-leaf and the underlying soil. As a consequence, we approximate the net longwave radiation budget of the shaded leaf to be zero. Note that there is no interaction of LW radiation between the bare soil and vegetated fractions, and thus no re-absorption of emitted LW radiation. This approximation for shaded leaves in a multilayer model is supported by Zhao and Qualls (2006).

Then, in order to decrease the allocation of energy into the latent heat flux, we create a ground heat flux (it was assumed negligible in the original GECROS version). We take a first-order estimate and parameterize it to be 10 % of the net absorbed radiation at the surface (this assumption was validated for short grass by de Bruin and Holtslag, 1982). Finally, we implement a vapor

pressure profile in the canopy layer to enable a more realistic description of VPD. In our implementation, the vapor pressure (e) changes linearly from top to bottom of the canopy, from the actual vapor pressure at 2 m to the saturation vapor pressure at 2 m. The state of saturation at bottom of the canopy is adjusted for cases of lighter vegetation cover. This allows the vapor pressure at the bottom to be always larger or equal to $e(2\text{m})$.

$$e(z) = e(2\text{m}) + (e_0 - e(2\text{m})) \times d_{\text{rel}} \quad (3)$$

with $e_0 = e(2\text{m}) + (e_{\text{SAT}}(2\text{m}) - e(2\text{m})) \times f_{\text{veg}}$

We use the relative canopy depth $d_{\text{rel}} = 0.5$ for shaded leaves and $d_{\text{rel}} = 0.9$ for the soil. Note that, in contrast to the canopy profile for vapor pressure, we do not implement a canopy profile for air temperature. We keep air temperature vertically constant and equal to the 2 m air temperature. We refer to the modified version of the GECROS model from here on.

In order to validate our modified version of GECROS, we performed a standard simulation of the maize growth for our location and year of interest (2007), and compared our results to observations. The initial conditions for this experiment are presented in Table A3. We first show in Fig. 1 three cumulative variables evolving over the growing season: yield, plant area index and crop height. In Fig. 1a, we find that the GECROS model reproduces the observed maize yield at day 282 within 10 % (2 kg m^{-2} simulated vs. 1.8 kg m^{-2} observed), indicating a correct integration of NPP over the growing season. Moreover, Fig. 1b and c show that GECROS also approaches the observed maximum plant area index (PAI) – a proxy for LAI – and crop height, with a $3.5 \text{ m}^2 \text{ m}^{-2}$ PAI and a 2.5 m height vs. an observed $3.8 \text{ m}^2 \text{ m}^{-2}$ PAI and 2.8 m height. This suggests that the NPP was also assigned to the correct GECROS carbon pools (stems, leaves, roots) during crop development. This satisfactory agreement for carbon storage was expected and is reassuring, since the GECROS model was built as a crop yield model (Yin and van Laar, 2005).

In addition, we show in Fig. 2 the seasonal evolution of surface available energy (Qnet), latent heat flux (LE), sensible heat flux (SH) and net CO_2 exchange (i.e. NEE) in daily integrated amounts. Their seasonal means, presented in Table 1, are all in agreement with the observations, except for a small overestimation of the mean NEE. This overestimation could be due to a too

low soil respiration. Also, the R^2 between the modelled and observed daily integrated Qnet (0.95) is very high, and the R^2 for the daily integrated LE (0.75), SH (0.59) and NEE (0.74) are satisfactory. The high degree to which GECROS reproduces the variability from day-to-day results from the prescribed meteorological driver data in the seasonal simulation, which provides the model with observed radiation, atmospheric temperature, and precipitation data. Note that the mismatch between observations and GECROS on individual days can nevertheless be quite large (cf. the RMSE compared to the observed seasonal means and standard deviations in Table 1), despite the improvements we made to its energy balance. Such mismatch could be produced by the incorrect simulation of key driver variables (e.g. Qnet and soil moisture) in GECROS, or by the absence of a diurnal-scale weather forcing (only one data input is given per day), or even by the lack of atmospheric feedback. This partly reinforces the aim of our study, which is to focus on understanding the diurnal-daytime two-way crop-atmosphere interactions.

2.2.4 A- g_s , a land-surface exchange model

The A- g_s model is a generic meteorological-oriented land-surface model, which was originally published by Jacobs et al. (1996). Its use has been validated for grapevine (Jacobs et al., 1996), C₃ grass, C₄ grass, and soybean (Ronda et al., 2001). It is a single big-leaf model that relates plant CO₂ assimilation to the stomatal conductance ($g_s = 1/r_s$) via a CO₂ gradient (see Eq. 4). We use the version of Ronda et al. (2001), where the impact of soil water depletion on g_s is calculated with a linear function from wilting point to field capacity. In A- g_s , the upscaled canopy conductance (g_c) is hence calculated as a function of light, temperature, of the stomata to atmospheric CO₂ concentration ratio, of VPD, soil water stress, and of LAI. In Eq. (4), soil respiration is computed with an Arrhenius-type equation, using the concepts of reference respiration R_{10} and of the activation energy for chemical reactions E_a . In addition to the CO₂ fluxes, A- g_s calculates surface fluxes of latent and sensible heat with the same conductance approach (see Eqs. 5–6). Finally, the ground heat flux is calculated as the thermal diffusivity of

the skin layer times the temperature difference between the soil and skin layers.

$$\underbrace{(\overline{w'c'})_s}_{\text{Net ecosystem exchange}} = \underbrace{\left(\frac{1}{r_a + 1.6 r_s} \right)}_{\text{CO}_2 \text{ conductance}} \times \underbrace{(c_{\text{stomata}} - c_{\text{atmos}})}_{\text{CO}_2 \text{ gradient}} + \text{Soil Respiration} \quad (4)$$

Net primary production

$$\underbrace{(\overline{w'q'})_s}_{\text{Surface moisture flux}} = \underbrace{\left(f_{\text{veg}} \times \frac{1}{r_a + r_s} + (1 - f_{\text{veg}}) \times \frac{1}{r_a + r_{\text{soil}}} \right)}_{\text{water conductance}} \times \underbrace{(q_{\text{sat}}(T_{\text{skin}}) - q_{\text{atmos}})}_{\text{moisture gradient}} \quad (5)$$

$$\underbrace{(\overline{w'\theta'})_s}_{\text{Surface heat flux}} = \underbrace{\left(\frac{1}{r_a} \right)}_{\text{heat conductance}} \times \underbrace{(T_{\text{skin}} - \theta_{\text{atmos}})}_{\text{temperature gradient}} \quad (6)$$

A-g_s adapts its surface fluxes according to the vegetation cover and LAI, but simulates neither its own crop phenological development nor carbon accumulation into crop organs. This set-up makes the A-g_s model, in the present version, suited for the simulation of surface exchange at the diurnal scale only.

2.3 Simulation setup

With the three models presented before, we make two couplings to study the ~~diurnal~~daytime maize-atmosphere system: MXL-A-g_s and MXL-GECROS. We design them as two-way couplings: the surface fluxes given by A-g_s and GECROS are used as surface conditions for the MXL model, and in return, the incoming short wave radiation, atmospheric temperature, humidity, wind speed, and CO₂ mole fraction are fed to the surface schemes as environmental conditions. The internal calculations of MXL are done on a time step of 1 minute. In addition, A-g_s and GECROS feed the surface fluxes to MXL with a frequency of respectively 1 and 5 minutes. Note that we have checked and validated that the 4 minutes difference in communication frequency does not affect the coupling. Finally, all calculations start at 6 UTC, after

sunrise when turbulent convection is already active, and last until 18 UTC, thus ensuring the atmosphere is well-mixed during that time.

The main settings of our models are presented in Tables A1–A3. For MXL-GECROS, we first initialize the uncoupled GECROS model with the maize parameters of Yin and van Laar (2005) and Sinclair and de Wit (1975) (cf. Table A3). The uncoupled GECROS model is run from emergence date to the 4 August 2007, in order to obtain all initial conditions of its internal variables on the coupling date. On 4 August, we initialize all our coupled models following the available soil, crop and atmospheric observations from Jans et al. (2010). Note that we prescribe horizontal heat and moisture advection during the first hours of our numerical experiments, to improve the match to observations during the early morning transition to convective conditions. In addition, we use the C_4 photosynthesis parameters published by Ronda et al. (2001) for the A- g_s scheme.

The dataset from Jans et al. (2010) provides the soil volumetric water content on the 4 August 2007, but in absence of measurements of the soil wilting point and field capacity we assume typical values for these quantities for our soil type. In view of the uncertainty of the soil moisture measurements and of these soil moisture characteristic points, we decide to adjust the modelled soil volumetric water content to obtain a similar Bowen ratio as the observed one. We perform this adjustment with the two models. The soil moisture index (SMI, see Eq. 7) obtained with MXL-GECROS is very low, which suggests a heavy drought situation that was not observed.

$$\text{SMI} = \frac{W_{\text{actual}} - W_{\text{wilting point}}}{W_{\text{field capacity}} - W_{\text{wilting point}}} \text{ with } W \text{ the soil volumetric water content} \quad (7)$$

In consequence, we decide to apply the SMI obtained with MXL-A- g_s (55.5 %) in both cases. In the end, both models operate with the same soil type and SMI (see Appendix Tables A2 and A3), but yield different Bowen ratios and surface energy balances because of their difference in water-stress implementation.

In the absence of observations for soil respiration on the 4 August 2007, we adjust the MXL-A- g_s soil respiration to be identical to the internally calculated value from MXL-GECROS ($0.2 \text{ mg CO}_2 \text{ m}^{-2} \text{ s}^{-1}$ at 12:00 UTC). This means that for the net ecosystem exchange (NEE),

the only difference between the two models is in their representation of net primary production (NPP). We execute this by setting the reference respiration R_{10} of MXL-A-g_s at $0.03 \text{ mg CO}_2 \text{ m}^{-2} \text{ s}^{-1}$, a low but realistic number when considering the natural range of variation of R_{10} in the Netherlands (cf. Jacobs et al., 2007). Also, the estimate of soil respiration is in the range of observed values at that period of the year (Jans et al., 2010).

Finally, in order to obtain the same input of shortwave radiation as in our observations (25.0 MJ m^{-2}) on the 4 August 2007, we prescribe a cloud cover of 22.5 % in our models to match the observed total incoming short wave radiation (SWin) during daytime. This is because the observations show a significant reduction of SWin compared to the output of astronomic functions for a cloudless day, likely due to haze or fog in the morning. With our two coupled models, we make an intercomparison of their simulations against observations, to study the ability of these couplings to reproduce the cropland–atmosphere interactions.

2.4 Sensitivity analysis

Related to our first research question, we perform a sensitivity analysis of the diurnal-daytime cropland–atmosphere system to upper atmospheric conditions (subsidence) in comparison to surface conditions (soil moisture). We conduct this sensitivity analysis with the model that shows the best performance on the diurnal scale (i.e. MXL-A-g_s, see Results). We design two study cases, stemming from the control case of the 4 August 2007 of Sect. 2.3, by selecting two drivers to modify separately: (a) the “high subsidence” case, where we replace the very small horizontal wind divergence ($7 \times 10^{-6} \text{ s}^{-1}$) of the control case by a high one ($4 \times 10^{-5} \text{ s}^{-1}$), representing a realistic case of strong subsidence in the Netherlands, and (b) the “soil moisture depletion” case, where we apply a reduction of soil moisture (from 0.110 to $0.105 \text{ cm}^3 \text{ cm}^{-3}$), equivalent to a 5 % decrease of SMI for that soil type. A decrease of 5 % SMI could happen over several days in a drying phase (e.g. Daly et al., 2004; Betts, 2004). We analyse the impact of these two external forcings on the diurnal-daytime surface energy balance and NEE, as well as the net effect on the atmospheric CO_2 mole fraction.

3 Results

3.1 Intercomparison of coupled models against observations

3.1.1 Diurnal Daytime evolution of the surface fluxes

Figure 3 presents three of the four components of the surface energy balance, together with the net surface CO₂ exchange, for the 4 August 2007. We identify three phases in the observed surface fluxes daytime diurnal cycle. Phase A corresponds to the early morning transition from a stable to a convective boundary layer. During Phase A, the SH flux switches from negative to positive (see Fig. 3b), and this heat becomes the source of convection which works to break up the thermal stratification built during nighttime. Reproducing this observed transition with our models is difficult. First, because advection of heat and moisture plays an important role in this early morning phase (see next section), but also because dew on the vegetation possibly delayed the onset of a positive SH in observations. In addition, when SH is negative, the corrected observed LE flux assumes unrealistically high values (see Fig. 3c) due to our correction method. For all these reasons, we will exclude the early morning transition from our model evaluation.

Phase B is the most important part of the day, when fluxes are highest and convection is dominant. During Phase B, MXL-GECROS strongly underestimates the Bowen ratio, with an underestimated SH in accordance with its consistently higher LE flux. As a consequence and due to the coupling with evapotranspiration, photosynthesis is overestimated, as shown in NEE (considering that the soil respiration is low and identical between MXL-GECROS and MXL-A-g_s). These strong fluxes contribute most to the daily integrated amount, which impact the atmospheric state. Therefore it is very important to calculate correct surface fluxes during Phase B, which MXL-A-g_s does slightly better than MXL-GECROS.

Finally, Phase C is the the late afternoon transition from a convective to a stable boundary layer. During Phase C, the SH flux changes from positive to negative, causing the convection to cease. Also, evapotranspiration and photosynthesis decrease until fluxes become negligible. The late afternoon transition for SH occurs much earlier for MXL-GECROS (15:00 UTC) than for MXL-A-g_s (16:45 UTC) and the observations (17:15 UTC), which means the assumption

of a convective boundary layer, the basis of the MXL model, ends earlier for MXL-GECROS than for MXL-A-g_s.

Overall, Fig. 3 shows that both MXL-GECROS and MXL-A-g_s calculate reasonable magnitudes and temporal evolutions of the surface fluxes for the observed maize crop, but MXL-A-g_s performs slightly better than MXL-GECROS. We find in Fig. 3a that both models calculate different amounts of Qnet. They benefit from the same amount of incoming shortwave radiation (25.0 MJ m^{-2} integrated over the day), but yield different radiation balances, since they have differently parameterized functions for albedo and longwave radiation budgets of the leaves and soil. As a result, a different amount of available energy will be partitioned into sensible heat, latent heat and ground heat fluxes. Following Qnet, in Fig. 3b–d, we find that, integrated between 08:00 UTC and 18:00 UTC, MXL-GECROS underestimates SH by a total of 1.3 MJ m^{-2} (38 %), and overestimates LE by 2.1 MJ m^{-2} (22 %) and NEE by $13.0 \text{ g CO}_2 \text{ m}^{-2}$ (25 %, see Table 2). On the other hand, MXL-A-g_s overestimates SH by a total of 0.8 MJ m^{-2} (24 %), and underestimates LE by 1.5 MJ m^{-2} (15 %) and NEE by $10.6 \text{ g CO}_2 \text{ m}^{-2}$ (20 %). Considering the three fluxes of heat, water and CO₂, we find that MXL-A-g_s reproduces the observed diurnal-daytime evolution of the surface fluxes better than MXL-GECROS on the 4 August 2007. It is important to remember that we prescribe the initial soil moisture to match the observed Bowen ratio with MXL-A-g_s, which is why arrive at this better fit for the surface energy balance of this model. We prescribe the same SMI (55.5 %) to both models, which have different water-stress responses, hence the lesser fit for MXL-GECROS. To see how the differences in magnitudes and timing of heat, water, and carbon surface fluxes impact the atmospheric state, we assess the atmospheric mixed-layer next.

3.1.2 Diurnal-Daytime evolution of the atmospheric boundary layer

Figure 4 shows MXL-A-g_s outperforms MXL-GECROS, when simulating a fully coupled atmosphere. When comparing observations with the model results, note that we present the modelled mixed-layer (or bulk) values against the 2 m observations for temperature and specific humidity. Considering the general properties of the surface layer (a gradual decrease of temperature and humidity from the surface level to the mixed-layer level), the observed 2 m at

5 atmosphere is thus expected to be slightly warmer and moister than the modelled mixed-layer atmosphere. Also, because the negative SH depletes the layer of air close to the surface from heat at the very end of the day, the observed 2 m temperature is expected to decrease at that time. Keeping these expected differences in mind, we find that the MXL-A-g_s model reproduces the observed temperature and moisture values well, while MXL-GECROS calculates a clearly too high 18:00 UTC humidity (11.2 g kg⁻¹) compared to the observations (9.8 g kg⁻¹). Similarly, MXL-GECROS simulates a too CO₂-depleted atmosphere (-20 ppm) and a too shallow boundary layer (-250 m) compared to observations, where MXL-A-g_s performs relatively well.

10 When we relate the integrated heat, water and CO₂ surface fluxes of Table 2 to the atmosphere of Fig. 4, we observe, as expected, that a lower integrated amount of SH in MXL-GECROS compared to MXL-A-g_s leads to a 2 °C lower maximum temperature (24 instead of 26 °C). Also, a higher integrated LE in MXL-GECROS compared to MXL-A-g_s results in a 1.4 g kg⁻¹ higher specific humidity at end of the day (11.1 instead of 9.7 g kg⁻¹). Finally a lower integrated NEE in MXL-GECROS compared to MXL-A-g_s leads to a 22 ppm lower CO₂ mole fraction (333 instead of 355 ppm). But when we compare the modelled and observed atmosphere, we find discrepancies. This is because surface fluxes do not directly translate into a [diurnal daytime](#) evolution of the atmospheric temperature, humidity and CO₂ mole fraction. For instance, in Fig. 4c, we find that the daytime overestimation of NEE by MXL-GECROS leads to a too strongly CO₂-depleted atmosphere compared to observations only in the afternoon. Also for MXL-A-g_s, despite a daytime underestimated NEE, it reproduces satisfactorily the observed CO₂ daily minimum on 4 August 2007. This shows that errors in the surface fluxes can be canceled by other non-local effects like the advection, entrainment or boundary-layer dilution (e.g. see the role of dry-air entrainment in van Heerwaarden et al., 2009, or CO₂ advection in Casso-Torralba et al., 2008). A full analysis of the [daytime](#) diurnal cycle of the atmosphere must thus include the contribution of these processes.

25 Advection fluxes can change the expected evolution of the atmosphere. The occurrence of heat and moisture advection on the 4 August 2007 is noticeable because the observed [diurnal daytime](#) range in temperature and the early morning increase in humidity are too large to be solely due to realistic crop sensible heat and evapotranspiration fluxes. We thus prescribed hor-

horizontal heat and moisture advection during the first hours of our numerical experiments (see Table A1). We estimate, for the MXL-A-g_s model, that the contribution of advection to the [diurnal daytime](#) temperature range (DTR, 13 °C) to be of 3 °C, and the contribution to the early morning specific humidity increase (1.8 g kg⁻¹) to be of 1.2 g kg⁻¹. The observed CO₂ mole fraction stabilization and increase after 13:00 UTC is also most probably generated by advection as well because an increase in CO₂ mole fraction could only be due to: (a) a positive NEE (which we do not have), (b) strong entrainment of CO₂-rich air (which is unlikely at the end of the day), or (c) CO₂ advection. Despite this observation, we prescribed no advection of CO₂ in our model runs to more clearly demonstrate the role of surface fluxes in the CO₂ budget.

Finally, entrainment fluxes also alter the state of the boundary layer. The boundary-layer height (h) of Fig. 4d can serve as a proxy for measuring the amount of warmer, drier, CO₂-depleted air that is entrained from the free-troposphere into the boundary layer, in cases where there is no or very little subsidence (our case). In the end, we find in Fig. 4d that both models calculate maximum h that are lower (−150 m for MXL-A-g_s and −250 m for MXL-GECROS) than observed (1400 m). Differences between the models are due to differences in heat input from SH and the subsequent entrainment, as the heat advection, free tropospheric vertical profiles and subsidence are identical between the models. But in reality, there are discrepancies in all of these variables, to create the existing differences between models and observations. Clearly, both boundary-layer dynamics and surface fluxes must be included in atmospheric simulations to properly capture the contribution of the large-scale air masses to the local atmospheric state. We will investigate the relevance of upper atmosphere conditions in more detail in the next section.

3.2 Sensitivity analysis of an upper atmosphere forcing

We showed in the previous sections that MXL-A-g_s performs best to reproduce the [daytime](#) diurnal crop-atmosphere coupling on the 4 August 2007. As a consequence, we use it to conduct a sensitivity experiment. Our goal here is to quantify the strength of the couplings between the upper atmosphere, the boundary layer and the crop surface. From now on, we refer to the MXL-A-g_s run of the previous sections as the control run, from which we derive our sensitivity

analysis runs. We design two case studies: one where we apply a stronger upper atmosphere forcing (high subsidence) and another where we alter a land-surface forcing (depletion of soil moisture, see Sect. 2.4 for a detailed specification of the settings). Both high subsidence and soil moisture depletion are characteristic of a drought period. Figure 5 presents the main interactions between carbon, water, and energy that result in the state of the land–atmosphere. We use it to summarise the changes linked to increased subsidence, discussed in the next paragraphs.

While the high subsidence case stimulates the latent heat flux LE through the warming of the boundary layer (red arrows in Fig. 5), the soil moisture depletion case decreases LE through the closure of plant stomata. Subsidence is a large-scale forcing that counteracts the growth of the boundary layer and even reduces h once its growth has stopped (see the high subsidence case in Fig. 6a). It enhances the entrainment of warm free tropospheric air and causes a smaller volume of air to be warmed up by the same surface sensible heat flux, thus increasing the atmospheric temperature (+1.5 °C at 18:00 UTC, see Fig. 6b). This warming of the atmosphere increases the VPD at the surface (+0.2 kPa at 14:00 UTC, not shown here) and shifts the evaporative fraction ($EF = LE/(SH + LE)$) towards evapotranspiration by 5% on average during the day (see Fig. 7a). Finally, this increase in LE results in a moistening of the atmosphere that counteracts the initial atmospheric drying caused by a short-term enhancement of dry-air entrainment (not shown here). In Fig. 6c we find that the specific humidity, which is first lower than in the control run, becomes higher than in the control run after 14:00 UTC due to the stimulation of LE.

On the other hand, for the lower soil moisture case, the decreased availability of soil moisture generates a decrease in surface conductance g_s on average by 1 mm s^{-1} during the day (see Fig. 6d). This decrease in surface conductance leads to a reduction of EF of 5% throughout the day (see Fig. 7a), and finally to a reduction of h of 40 m (see Fig. 6a). As a result, we find that both cases affect the energy partitioning at the surface with equivalent magnitude. It is thus important to consider both the effect of high subsidence and soil moisture depletion on evapotranspiration in the context of drought response. Moreover, it is interesting to analyse how the net surface carbon uptake is affected by them.

High subsidence and soil moisture depletion have different impacts on the net CO_2 flux at the surface. While the high subsidence case shows no difference in photosynthesis and respiration compared to the control case, the reduced soil moisture case presents a reduction in photosynthesis ($-0.2 \text{ mg CO}_2 \text{ m}^{-2} \text{ s}^{-1}$ at midday in Fig. 9a). ~~We relate this decrease of photosynthesis to the decrease in g_s .~~ This is because while the reduced soil moisture case generates a clear stomata closure in response to water stress (-1 mm s^{-1}) of at 14:00 UTC in Fig. 6d, ~~which indicates a plant stomata closure~~, the high subsidence case generates only a slight change of stomata opening in response to ~~water stress: the increased VPD~~ (-0.3 mm s^{-1} at 14:00 UTC in Fig. 6d), which is entirely compensated by a slight increase in the surface CO_2 gradient ($+8 \text{ ppm}$ at 14:00 UTC, not shown here). Thus, as a result of two very different feedback mechanisms on net photosynthesis, but also on evapotranspiration (see previous paragraph), we obtain an increase in intrinsic water use efficiency ($i\text{WUE} = \text{NPP}/g_s$) of respectively 11 and $18 \mu\text{mol CO}_2 \text{ mol H}_2\text{O}^{-1}$ for the high subsidence and soil moisture depletion cases, compared to the control case (i.e. $+3 \%$ and $+6 \%$ on average, see Fig. 7b). This means both forcings make plant carbon exchange, and by extension plant carbon storage, slightly more water-efficient. While a reduction in soil moisture has an immediate impact on the daily crop yield (integrated decrease of NPP of 1.2 g C m^{-2}), high subsidence does not. However, high subsidence worsens soil moisture depletion (-1% SMI) because it increases EF by 5% , as we described earlier. This suggests that subsidence could ultimately contribute to a yield decrease if the drought situation is prolonged. It is therefore interesting to extend our sensitivity analysis to a larger range of SMI and subsidence in order to verify the response of the system.

We perform a more detailed sensitivity analysis of $i\text{WUE}$ and EF to soil moisture and subsidence, which is presented in Fig. 8. We start our 10 201 experiments with identical initial conditions to the control case (point C in Fig. 8), except that we vary both the initial SMI by 20% (on x-axis) and the large-scale divergence by $4 \times 10^{-5} \text{ s}^{-1}$ (D , on y-axis). Note that the variable D is related to the subsidence velocity (w_s) through the ABL height ($w_s = -D \times h$). Thus, the full range of D explored in Fig. 8 represents a subsidence velocity of 0 to 0.04 m s^{-1} , the maximum being typical of stationary high pressure systems. By studying these ranges, we cover small fluctuations of drivers around the control case, but also conditions associated to

drought (i.e. much dryer soil with high subsidence). Figure 8 shows EF and iWUE are more dependent on changes in SMI than variations of D . However, note that day-to-day changes in SMI do not exceed 2-3 %, thus the full range presented here corresponds to a long-term drying of the soil, whereas the full range of D can be explored on short-term. Thus, on a diurnal scale, subsidence is as important as soil moisture.

As discussed earlier, increasing subsidence (e.g. moving from point C to point H) directly reduces the maximum ABL height (from 1250 to 825 m) and thus causes the atmosphere to become warmer and moister at the end of the day. Increasing soil moisture (e.g. moving from point D to point C) stimulates evapotranspiration and carbon exchange, and generates a cooler, wetter atmosphere at the end of the day. As the figure shows, a simultaneous change of SMI and D (e.g. when we move from the lower right corner to the upper left corner of Fig. 8) leads to a 3.5 K increase in the ~~diurnal~~ daytime maximum atmospheric temperature and a 0.5 g kg⁻¹ decrease in the ~~diurnal~~ daytime average atmospheric humidity. These atmospheric condition, together with the lower availability of soil moisture (-20% SMI), enhance the 14:00 UTC iWUE by 130 $\mu\text{mol}_{\text{CO}_2} \text{mol}_{\text{H}_2\text{O}}^{-1}$ and reduce the 14:00 UTC EF by 14.4%. These results are in accordance with studies that state droughts enhance the plants intrinsic water-use efficiency for carbon exchange (e.g. Maseyk et al., 2011), and switch the partitioning of the surface energy balance towards SH at the expense of LE (e.g. Jongen et al., 2011).

We find in Fig. 8 that the positive feedback of subsidence on soil moisture depletion, discussed earlier, is slightly lessened under a prolonged drought. Figure 8 shows that, when we increase subsidence (i.e. when we move along the full range of the y-axis), the resulting change in EF is smaller at SMI 0.40 (3.0%) than at SMI 0.60 (4.5%). This is a direct consequence of having less soil moisture available for evapotranspiration. The positive feedback of subsidence on soil moisture is an extension of the feedback loops on evapotranspiration discussed by (van Heerwaarden et al., 2010). Our findings indicate that although the stimulation of EF by subsidence is less important under drought, it still contributes to a faster soil moisture depletion and decrease in crop yield over the days. From a carbon cycle perspective, it is moreover interesting to analyse in more detail how the atmospheric CO₂ budget can be affected by surface and upper atmosphere modifications.

Figure 9 presents the ~~diurnal~~daytime atmospheric CO₂ budget. In Fig. 9c, we see that the boundary-layer CO₂ tendency receives equivalent contributions from the surface, and from entrainment, but their distribution in time differs. The contribution of entrainment to the overall CO₂ drawdown (−32 ppm in the control case) happens in the morning, before 09:00 UTC (i.e. 11:00 LT). On the other hand, the contribution of the surface uptake to the overall CO₂ drawdown (−34 ppm in the control case) is more constant throughout the day. In the high subsidence case, even though the entrainment of CO₂-depleted air is lower (cf. Fig. 9b) and the NEE is unchanged (cf. Fig. 9a), both the surface and entrainment CO₂ tendencies are higher due to the lower boundary-layer volume (see Fig. 6a). This is because the tendencies are inversely proportional to the boundary-layer height in the mixed-layer framework, as shown by Pino et al. (2012). Consequently, the atmospheric CO₂ mole fraction is even more reduced in the high subsidence case (−12 ppm at 18:00 UTC relative to the control and soil moisture depletion cases, in Fig. 9d). Because the larger CO₂ drawdown is caused solely by the reduction in boundary-layer height in the high subsidence case, it is thus very important to consider the effect of increased subsidence in high pressure systems when interpreting measurements of the boundary-layer CO₂ mole fraction.

4 Discussion

4.1 On the importance of upper-atmosphere processes

In our study, we compare two coupled models, MXL-A-g_s and MXL-GECROS, against a complete set of surface and boundary-layer observations. Related to our first research question, we have hypothesized that entrainment and subsidence are essential processes which contribute to determine the carbon, water and energy budgets of the ~~diurnal~~daytime crop-atmosphere system. Our findings indeed confirm our hypothesis, as we show that entrainment and subsidence have a non-negligible impact on the ~~diurnal~~daytime surface fluxes (iWUE and EF), as well as the atmospheric quantities (temperature, humidity and CO₂ mole fraction).

Previous studies have often put emphasis on surface processes. They have shown the importance of calculating correct surface fluxes of heat, water and CO₂, to improve numerical weather predictions (e.g. Boussetta et al., 2013; Moreira et al., 2013; Smallman et al., 2013; Hong et al., 2009), atmospheric CO₂ modelling (e.g. Corbin et al., 2010; Schuh et al., 2010; Tolk et al., 2009) and crop yield forecast (e.g. de Wit and Van Diepen, 2007). Studies involving two-way coupled models like ours (e.g. Santanello et al., 2013; Tao et al., 2013; Chen and Xie, 2011 and Kohler et al., 2010) have stressed the importance of slowly evolving surface forcings such as soil moisture, vegetation cover and LAI, which drive the surface exchange and strongly impact atmospheric properties like boundary-layer height. Also, interpretations of observed CO₂ mole fractions in the ABL often focus on the role of NEE, typically a large contributor to the atmospheric CO₂ budget (Tolk et al., 2009). While we agree that these surface processes and drivers are all key to the carbon, water and energy budgets, we have shown that atmospheric processes occurring at top of the ABL also need to be taken into account.

A few studies have explored the importance of the upper-atmosphere processes in the vegetation-atmosphere system. For instance, van Heerwaarden et al. (2009) and Ek and Holtslag (2004) have shown the impact of the ABL-top moisture inversion and the tropospheric temperature lapse rate, on the surface fluxes, relative humidity at top of the ABL and the boundary-layer cloud formation. With our sensitivity analysis, we moreover emphasize the importance of another large-scale atmospheric forcing, subsidence, which affects surface fluxes and changes boundary-layer properties like temperature, moisture and CO₂ mole fraction.

Our results agree with Canut et al. (2012); Williams et al. (2011); Mcgrath-Spangler and Denning (2010); van Heerwaarden et al. (2009); Casso-Torralba et al. (2008); Vilà-Guerau De Arellano et al. (2004), who found ABL growth and entrainment were key controls of the atmospheric CO₂ budget at the [diurnal-scale diurnal scale](#). However, the observation-based work of Williams et al. (2011) also showed that on longer time periods than the typical ten-day synoptic scale, NEE and large-scale atmospheric transport are the most important contributions to the atmospheric CO₂ mole fractions observed in the ABL. Day-to-day variations of ABL growth rates and associated entrainment were less important when interpreting weekly to seasonally averaged CO₂ budgets. Here, we show that through the [daytime](#) diurnal coupling of the fluxes of

water and heat at the top of the ABL to the crops growing at the surface, NEE is impacted, possibly at time scales of weeks and longer. This is because crops such as wheat and maize have sensitive periods of less than two weeks (e.g. crop germination, anthesis/flowering, ripening) in which in crop yield can decline if heat or water stress is applied (Eitzinger et al., 2013; Sánchez et al., 2014). Thus, using a diurnal scale coupled framework to calculate the fluxes of heat, water during those specific periods of crop development could be important even if the direct contribution of entrainment to the CO₂ budget becomes smaller at longer time scales. A further investigation of the interactions identified in this work, focusing on the synoptic and seasonal time scales described in Williams et al. (2011), is therefore planned as a follow-up study.

To conclude, we know that the daytime diurnal cycles of heat, water and CO₂ are joined in a coupled system: through (a) the canopy stomatal control on CO₂ exchange and transpiration, which in turn determines the amount of sensible heat flux in the surface energy balance, and (b) the large-scale conditions at the top of the boundary layer, which control the ~~diurnal~~-daytime boundary-layer development and thus the entrainment and volume dilution of heat, water and CO₂. Our findings show these surface and upper atmospheric controls are of equivalent importance on a diurnal scale for the atmospheric CO₂ budget. We recommend using a fully coupled land-atmosphere framework to study the ~~diurnal~~-daytime atmospheric CO₂ budget, as we confirm that the land-induced boundary-layer growth has an important impact due to both volume dilution and CO₂ entrainment.

4.2 On the performance of our models

Related to our second research question, we have hypothesized that the MXL-GECROS model can best reproduce the ~~diurnal~~-daytime crop-atmosphere interactions, because of the higher level of crop biology detail embedded in the model. However, we show that neither of our models is able to simultaneously reproduce the ~~diurnal~~-daytime heat, water and CO₂ surface fluxes. MXL-A-g_s simulates the crop-interactions more satisfactorily overall, but it underestimates NEE.

The performance of our two models strongly depends on the sensitivity of the water-stress function to soil moisture. While GECROS only reduces its conductivity, and hence evaporation, close to wilting point, A-g_s linearly decreases stomatal conductance from field capacity to wilt-

ing point. These are similar water-stress responses as for respectively the CLM3.5 and JULES models shown in Powell et al. (2013). We have confirmed that these differences in water-stress functions are responsible for the overestimation of latent heat by MXL-GECROS compared to MXL-A-g_s. We conclude, in agreement with Eitzinger et al. (2013) and Powell et al. (2013), that these differences in water-stress implementation could lead to significant differences in simulated crop yield. Studies like the one of Verhoef and Egea (2014) can help to validate the water-stress representations of surface models.

The satisfactory performance of our models also depends on the correct initialization of key surface and upper-atmospheric variables, as suggested by Sabater et al. (2008). In our study, we lacked measurements of the soil moisture characteristic points (wilting point, field capacity and saturation point). Thus, we estimated them and allowed the MXL-A-g_s model to profit from the explicit initialization of soil moisture, using the observed Bowen ratio. This was our best estimation possible. We advocate the use of complete sets of observations, including not only soil, vegetation, and lower atmosphere, but also boundary layer and free troposphere, to evaluate the performance of coupled land–atmosphere models. These prove of utmost importance for the validation of the modelled interactions.

For the prospect of going from a diurnal to a seasonal scale study, we regard data assimilation of soil moisture values, as done e.g. by Boussetta et al. (2013); Hong et al. (2009) and de Wit and Van Diepen (2007), as a promising solution. Data assimilation of LAI, as done by Huang et al. (2013); Zhao et al. (2013); Sus et al. (2010) and Jégo et al. (2012), could also help transform our [daytime](#) diurnal land-surface scheme A-g_s into a capable seasonal surface scheme, as previously done within ISBA-A-g_s (Barbu et al., 2011). Albergel et al. (2010) and Ines et al. (2013) suggest joint assimilation of LAI and soil moisture yields the best results. As an alternative, the MXL-A-g_s model could also benefit from a satisfactory crop phenology module to interactively calculate LAI, like GECROS, as a replacement of LAI data assimilation (e.g. Lokupitiya et al., 2009).

To conclude, we recommend using meteorological-oriented (surface exchange) models, such as MXL-A-g_s, for simulations of the [diurnal-daytime](#) crop-atmosphere interactions, as long as the crop is not nitrogen-stressed. However, to simulate longer periods of crop-atmosphere interactions, we recommend to adopt a merging strategy to use the distinct advantages of both the

generic meteorological-oriented land-surface models (sound surface energy balance) and the specialized crop carbon storage-oriented models (crop phenology, nitrogen stress implementation and prognostic carbon pools). The performance of such models is linked to their correct initialization, which can only be achieved thanks to complete observational datasets. It is also
5 linked to their crop water-stress representation, which conditions the surface energy balance and carbon exchange under shortages of soil moisture.

5 Conclusions

In this work, we use a process-based coupled framework to investigate the diurnal-daytime interactions of CO₂, water, and heat in the crop-atmosphere system. Our framework strength lies
10 in the relative simplicity of the model that still represents the essential processes of the system. For example, the sensitivity analysis of Fig. 8 and the CO₂ budget of Fig.9 could not easily have been produced using a full meso-scale land-atmosphere model. Using it, we are able to study the relevant interactions of the ABL with the surface, and to allow a direct comparison to observed ABL and surface variables.

15 Our results show that upper-atmosphere processes and drivers (entrainment and subsidence) are as important as surface processes and drivers (surface fluxes, soil moisture, LAI) to determine the diurnal-daytime budgets of heat, water and carbon of the crop-atmosphere system. Therefore, ABL dynamics need to be considered when interpreting observations of atmospheric CO₂ mole fractions over crops. Using correct estimates of the large-scale forcings are also of key importance.
20 Our modeling framework and its modular design describes these dynamics and allows an extension to other processes, such as the impact of aerosols (Barbaro et al., 2014), clouds (Vilà-Guerau de Arellano et al., 2012), or ozone on the budgets of carbon, water, and heat. Although we have demonstrated that the daytime diurnal scale interactions are well described by a meteorology-oriented coupled model like MXL-A-g_s, at the seasonal scale the
25 development of the crop and soil hydraulics are likely to be important given the nonlinear response of the coupled system across a wide range of large-scale forcings, as shown in this paper.

Acknowledgements. This research was funded by the Netherlands Organisation for Scientific Research (NWO) through the VIDI grant number 864.08.012, and by the China Exchange Program of the Dutch Royal Academy of Research (KNAW) through the travel grant number 12CDP006. The authors acknowledge Xinyou Yin (Wageningen University) and Kees Rappoldt (EcoCurves BV) for their expert help with the GECROS model. We also thank Henk Klein Baltink (KNMI) and Fred Bosveld (KNMI) for providing the Cabauw data, Eduardo Barbaro (Wageningen University) for his help with the radiation formulation, and Denica Bozhinova (Wageningen University) for her help with programming a part of the analysis code.

References

- 10 Ahmadov, R., Gerbig, C., Kretschmer, R., Koerner, S., Neininger, B., Dolman, A. J., and Sarrat, C.: Mesoscale covariance of transport and CO₂ fluxes: Evidence from observations and simulations using the WRF–VPRM coupled atmosphere–biosphere model, *J. Geophys. Res.*, 112, D22107, doi:10.1029/2007JD008552, 2007.
- 15 Albergel, C., Calvet, J.-C., Mahfouf, J.-F., Rüdiger, C., Barbu, A. L., Lafont, S., Roujean, J.-L., Walker, J. P., Crapeau, M., and Wigneron, J.-P.: Monitoring of water and carbon fluxes using a land data assimilation system: a case study for southwestern France, *Hydrol. Earth Syst. Sci.*, 14, 1109–1124, doi:10.5194/hess-14-1109-2010, 2010.
- Aubinet, M., Vesala, T., and Papale, D. (Eds.): *Eddy Covariance: A Practical Guide to Measurement and Data Analysis*, Springer, Dordrecht, the Netherlands, 2012.
- 20 Ball, J. T.: *An analysis of stomatal conductance*, Ph.D. thesis, Stanford University, Stanford, CA, 1988.
- Barbaro, E. and Vilà-Guerau De Arellano, J. and Ouwensloot, H. G. and Schröter, J. and Donovan, D. P. and Krol, M. C.: Aerosols in the convective boundary layer: Shortwave radiation effects on the coupled land atmosphere system, *J. Geophys. Res.-Atmos.*, 119, 5845–5863, doi:10.1002/2013JD021237, 2014.
- 25 Barbu, A. L., Calvet, J.-C., Mahfouf, J.-F., Albergel, C., and Lafont, S.: Assimilation of Soil Wetness Index and Leaf Area Index into the ISBA-A-gs land surface model: grassland case study, *Biogeosciences*, 8, 1971–1986, doi:10.5194/bg-8-1971-2011, 2011.
- Beljaars, A. C. M. and Bosveld, F. C.: Cabauw data for the validation of land surface parameterization schemes, *Journal of Climate*, 10, 1172–1193, 1997.

- Bert, F. E., Laciana, C. E., Podestá, G. P., Satorre, E. H., and Menéndez, A. N.: Sensitivity of CERES-Maize simulated yields to uncertainty in soil properties and daily solar radiation, *Agr. Syst.*, 94, 141–150, doi:10.1016/j.agsy.2006.08.003, 2007.
- 5 Betts, A. K.: Non-precipitating cumulus convection and its parameterization, *Q. J. Roy. Meteor. Soc.*, 99, 178–196, doi:10.1002/qj.49709941915, 1973.
- Betts, A. K.: Understanding hydrometeorology using global models, *B. Am. Meteorol. Soc.*, 85, 1673–1688, 2004.
- Betts, R. A.: Integrated approaches to climate-crop modelling: needs and challenges, *Philos. T. Roy. Soc. B*, 360, 2049–2065, 2005.
- 10 Bonan, G. B.: Forests and climate change: forcings, feedbacks, and the climate benefits of forests, *Science*, 320, 1444–1449, 2008.
- Boussetta, S., Balsamo, G., Beljaars, A., Panareda, A. A., Calvet, J. C., Jacobs, C., Van Den Hurk, B., Viterbo, P., Lafont, S., Dutra, E., Jarlan, L., Balzarolo, M., Papale, D., and Van Der Werf, G.: Natural land carbon dioxide exchanges in the ECMWF integrated forecasting system: implementation and offline validation, *J. Geophys. Res.-Atmos.*, 118, 5923–5946, 2013.
- 15 Brien, R., Wanek, W., and Hietz, P.: Stable carbon isotopes in tree rings indicate improved water use efficiency and drought responses of a tropical dry forest tree species, *Trees*, 25, 103–113, doi:10.1007/s00468-010-0474-1, 2011.
- Canut, G., Couvreur, F., Lothon, M., Pino, D., and Saïd, F.: Observations and large-eddy simulations of entrainment in the sheared sahelian boundary layer, *Bound.-Lay. Meteorol.*, 142, 79–101, 2012.
- 20 Carson, D. J.: The development of a dry inversion-capped convectively unstable boundary layer, *Q. J. Roy. Meteor. Soc.*, 99, 450–467, doi:10.1002/qj.49709942105, 1973.
- Casso-Torralba, P., Vilà-Guerau de Arellano, J., Bosveld, F., Soler, M. R., Vermeulen, A., Werner, C., and Moors, E.: Diurnal and vertical variability of the sensible heat and carbon dioxide budgets in the atmospheric surface layer, *J. Geophys. Res.*, 113, D12119, doi:10.1029/2007JD009583, 2008.
- 25 Challinor, A. J., Ewert, F., Arnold, S., Simelton, E., and Fraser, E.: Crops and climate change: progress, trends, and challenges in simulating impacts and informing adaptation, *J. Exp. Bot.*, 60, 2775–2789, 2009.
- Chen, F. and Xie, Z.: Effects of crop growth and development on regional climate: a case study over East Asian monsoon area, *Clim. Dynam.*, 38, 2291–2305, 2011.
- 30 Ciais, P., Wattenbach, M., Vuichard, N., Smith, P., Piao, S. L., Don, A., Luysaert, S., Janssens, I. A., Bondeau, A., Dechow, R., Leip, A., Smith, P. C., Beer, C., van der Werf, G., Gervois, S., van Oost, K.,

- Tomelleri, E., Freibauer, A., and Schulze, E. D.: The European carbon balance. Part 2: Croplands, *Glob. Change Biol.*, 16, 1409–1428, 2010.
- Collatz, G. J., Ball, J. T., Grivet, C., and Berry, J. A.: Physiological and environmental regulation of stomatal conductance, photosynthesis and transpiration: a model that includes a laminar boundary layer, *Agr. Forest Meteorol.*, 54, 107–136, 1991.
- 5 Corbin, K. D., Denning, A. S., Lokupitiya, E. Y., Schuh, A. E., Miles, N. L., Davis, K. J., Richardson, S., and Baker, I. T.: Assessing the impact of crops on regional CO₂ fluxes and atmospheric concentrations, *Tellus B*, 62, 521–532, doi:10.1111/j.1600-0889.2010.00485.x, 2010.
- Cowan, I. R.: Stomatal behaviour and environment, *Adv. Bot. Res.*, 4, 117–228, 1978.
- 10 Cox, P. M., Pearson, D., Booth, B. B., Friedlingstein, P., Huntingford, C., Jones, C. D., and Luke, C. M.: Sensitivity of tropical carbon to climate change constrained by carbon dioxide variability, *Nature*, 494, 341–344, doi:10.1038/nature11882, 2013.
- Daly, E., Porporato, A., and Rodriguez-Iturbe, I.: Coupled dynamics of photosynthesis, transpiration, and soil water balance. Part II: Stochastic analysis and ecohydrological significance, *J. Hydrometeorol.*, 5, 559–566, 2004.
- 15 de Bruin, H. A. R. and Holtslag, A. A. M.: A simple parameterization of the surface fluxes of sensible and latent-heat during daytime compared with the Penman–Monteith concept, *J. Appl. Meteorol.*, 21, 1610–1621, 1982.
- De Pury, D. G. G. and Farquhar, G. D.: Simple scaling of photosynthesis from leaves to canopies without the errors of big-leaf models, *Plant Cell Environ.*, 20, 537–557, 1997.
- 20 de Wit, A. J. W. and Van Diepen, C. A.: Crop model data assimilation with the Ensemble Kalman filter for improving regional crop yield forecasts, *Agr. Forest Meteorol.*, 146, 38–56, 2007.
- Eitzinger, J., Formayer, H., Thaler, S., Trnka, M., Zdenek, Z., and Alexandrov, V.: Aspects on results and uncertainties of climate change impact simulation studies for agricultural crop production in Europe, *Bodenkultur*, 59, 131–147, 2008.
- 25 Eitzinger, J., Thaler, S., Schmid, E., Strauss, F., Ferrise, R., Moriondo, M., Bindi, M., Palosuo, T., Rötter, R., Kersebaum, K. C., Olesen, J. E., Patil, R. H., Şaylan, L., Çaldağ, B., and Çaylak, O.: Sensitivities of crop models to extreme weather conditions during flowering period demonstrated for maize and winter wheat in Austria, *J. Agr. Sci.*, 151, 813–835, 2013.
- 30 Ek, M. B. and Holtslag, A. A. M.: Influence of soil moisture on boundary layer cloud development, *J. Hydrometeorol.*, 5, 86–99, 2004.

- FAOSTAT 2011 land-use statistics: The land-use resources sub-domain covers land area, temporary crops area and permanent crops area, FAOSTAT online database, available at: <http://faostat3.fao.org/faostat-gateway/go/to/download/R/RL/E> (last access: 3 March 2014), 2014.
- 5 Farquhar, G. D., O'leary, M. H., and Berry, J. A.: On the relationship between carbon isotope discrimination and the intercellular carbon dioxide concentration in leaves, *Aust. J. of Plant Physiol.*, 9, 121–137, 1982.
- Foken, T.: The energy balance closure problem: An overview, *Ecological Applications*, 18, 1351–1367, 2008.
- 10 Foken, T., Mauder, M., Liebethal, C., Wimmer, F., Beyrich, F., Leps, J. P., Raasch, S., DeBruin, H. A. R., Meijninger, W. M. L., and Bange, J.: Energy balance closure for the LITFASS-2003 experiment, *Theor. Appl. Climatol.*, 101, 149–160, 2010.
- Friedlingstein, P., Cox, P., Betts, R., Bopp, L., Von Bloh, W., Brovkin, V., Cadule, P., Doney, S., Eby, M., Fung, I., Bala, G., John, J., Jones, C., Joos, F., Kato, T., Kawamiya, M., Knorr, W., Lindsay, K., Matthews, H. D., Raddatz, T., Rayner, P., Reick, C., Roeckner, E., Schnitzler, K. G., Schnur, R., Strassmann, K., Weaver, A. J., Yoshikawa, C., and Zeng, N.: Climate–carbon cycle feedback analysis: results from the C⁴MIP model intercomparison, *J. Climate*, 19, 3337–3353, doi:10.1175/JCLI3800.1, 15 2006.
- Gervois, S., Ciais, P., de Noblet-Ducoudré, N., Brisson, N., Vuichard, N., and Viovy, N.: Carbon and water balance of European croplands throughout the 20th century, *Global Biogeochem. Cy.*, 22, GB2022, doi:10.1029/2007GB003018, 2008.
- 20 Hong, S., Lakshmi, V., Small, E. E., Chen, F., Tewari, M., and Manning, K. W.: Effects of vegetation and soil moisture on the simulated land surface processes from the coupled WRF/Noah model, *J. Geophys. Res.-Atmos.*, 114, D18118, doi:10.1029/2008JD011249, 2009.
- Huang, Y., Zhu, Y., Li, W. L., Cao, W. X., and Tian, Y. C.: Assimilating remotely sensed information with the wheatgrow model based on the ensemble square root filter for improving regional wheat yield forecasts, *Plant Prod. Sci.*, 16, 352–364, 2013.
- 25 Ines, A. V. M., Das, N. N., Hansen, J. W., and Njoku, E. G.: Assimilation of remotely sensed soil moisture and vegetation with a crop simulation model for maize yield prediction, *Remote Sens. Environ.*, 138, 149–164, 2013.
- 30 Jacobs, C. M. J., van den Hurk, B. M. M., and de Bruin, H. A. R.: Stomatal behaviour and photosynthetic rate of unstressed grapevines in semi-arid conditions, *Agr. Forest Meteorol.*, 80, 111–134, 1996.

- Jacobs, C. M. J., Jacobs, A. F. G., Bosveld, F. C., Hendriks, D. M. D., Hensen, A., Kroon, P. S., Moors, E. J., Nol, L., Schrier-Uijl, A., and Veenendaal, E. M.: Variability of annual CO₂ exchange from Dutch grasslands, *Biogeosciences*, 4, 803–816, doi:10.5194/bg-4-803-2007, 2007.
- Jans, W. W. P., Jacobs, C. M. J., Kruijt, B., Elbers, J. A., Barendse, S., and Moors, E. J.: Carbon exchange of a maize (*Zea mays* L.) crop: influence of phenology, *Agr. Ecosyst. Environ.*, 139, 316–324, 2010.
- Jarvis, P. G.: The Interpretation of the Variations in Leaf Water Potential and Stomatal Conductance Found in Canopies in the Field, *Philos. T. Roy. Soc. B*, 273, 593–610, 1976.
- Jégo, G., Pattey, E., and Liu, J.: Using Leaf Area Index, retrieved from optical imagery, in the STICS crop model for predicting yield and biomass of field crops, *Field Crop. Res.*, 131, 63–74, 2012.
- Jongen, M., Pereira, J. S., Aires, L. M. I. and Pio, C. A.: The effects of drought and timing of precipitation on the inter-annual variation in ecosystem-atmosphere exchange in a Mediterranean grassland, *Agr. Forest Meteorol.*, 151, 595–606, 2011.
- Keenan, T. F., Hollinger, D. Y., Bohrer, G., Dragoni, D., Munger, J. W., Schmid, H. P., and Richardson, A. D.: Increase in forest water-use efficiency as atmospheric carbon dioxide concentrations rise, *Nature*, 499, 324–327, 2013.
- Kohler, M., Kalthoff, N., and Kottmeier, C.: The impact of soil moisture modifications on CBL characteristics in West Africa: a case-study from the AMMA campaign, *Q. J. Roy. Meteor. Soc.*, 136, 442–455, 2010.
- Krinner, G., Viovy, N., De Noblet-Ducoudré, N., Ogée, J., Polcher, J., Friedlingstein, P., Ciais, P., Sitch, S., and Prentice, I. C.: A dynamic global vegetation model for studies of the coupled atmosphere-biosphere system, *Global Biogeochem. Cy.*, 19, 1–33, 2005.
- Lehuger, S., Gabrielle, B., Cellier, P., Loubet, B., Roche, R., Béziat, P., Ceschia, E., and Wattenbach, M.: Predicting the net carbon exchanges of crop rotations in Europe with an agro-ecosystem model, *Agr. Ecosyst. Environ.*, 139, 384–395, 2010.
- Leuning, R., Kelliher, F. M., Pury, D. G. G., and Schulze, E. D.: Leaf nitrogen, photosynthesis, conductance and transpiration: scaling from leaves to canopies, *Plant Cell Environ.*, 18, 1183–1200, 1995.
- Lilly, D. K.: Models of cloud-topped mixed layers under a strong inversion, *Q. J. Roy. Meteor. Soc.*, 94, 292–309, 1968.
- Lobell, D. B., Schlenker, W., and Costa-Roberts, J.: Climate trends and global crop production since 1980, *Science*, 333, 616–620, 2011.
- Lokupitiya, E., Denning, S., Paustian, K., Baker, I., Schaefer, K., Verma, S., Meyers, T., Bernacchi, C. J., Suyker, A., and Fischer, M.: Incorporation of crop phenology in Simple Biosphere Model

- (SiBcrop) to improve land-atmosphere carbon exchanges from croplands, *Biogeosciences*, 6, 969–986, doi:10.5194/bg-6-969-2009, 2009.
- 1 Maseyk, K., Hemming, D., Angert, A., Leavitt, S. W. and Yakir, D.: Increase in water-use efficiency and underlying processes in pine forests across a precipitation gradient in the dry Mediterranean region over the past 30 years, *Oecologia*, 167, 573–585, doi:10.1007/s00442-011-2010-4, 2011.
- 5 Mcgrath-Spangler, E. L. and Denning, A. S.: Impact of entrainment from overshooting thermals on land-atmosphere interactions during summer 1999, *Tellus B*, 62, 441–454, 2010.
- Meyers, T. P. and Hollinger, S. E.: An assessment of storage terms in the surface energy balance of maize and soybean, *Agr. Forest Meteorol.*, 125, 105–115, 2004.
- 10 Moreira, D. S., Freitas, S. R., Bonatti, J. P., Mercado, L. M., Rosário, N. M. É., Longo, K. M., Miller, J. B., Gloor, M., and Gatti, L. V.: Coupling between the JULES land-surface scheme and the CCATT-BRAMS atmospheric chemistry model (JULES-CCATT-BRAMS1.0): applications to numerical weather forecasting and the CO₂ budget in South America, *Geosci. Model Dev.*, 6, 1243–1259, doi:10.5194/gmd-6-1243-2013, 2013.
- 15 Pino, D., Vilà-Guerau de Arellano, J., Peters, W., Schröter, J., van Heerwaarden, C. C., and Krol, M. C.: A conceptual framework to quantify the influence of convective boundary layer development on carbon dioxide mixing ratios, *Atmos. Chem. Phys.*, 12, 2969–2985, doi:10.5194/acp-12-2969-2012, 2012.
- Powell, T. L., Galbraith, D. R., Christoffersen, B. O., Harper, A., Imbuzeiro, H. M. A., Rowland, L., Almeida, S., Brando, P. M., da Costa, A. C. L., Costa, M. H., Levine, N. M., Malhi, Y., Saleska, S. R.,
20 Sotta, E., Williams, M., Meir, P., and Moorcroft, P. R.: Confronting model predictions of carbon fluxes with measurements of Amazon forests subjected to experimental drought, *The New Phytol.*, 200, 350–365, 2013.
- Ronda, R. J., De Bruin, H., and Holtslag, A.: Representation of the canopy conductance in modeling the surface energy budget for low vegetation, *J. Appl. Meteorol.*, 40, 1431–1444, 2001.
- 25 Sabater, J. M., Rüdiger, C., Calvet, J. C., Fritz, N., Jarlan, L., and Kerr, Y.: Joint assimilation of surface soil moisture and LAI observations into a land surface model, *Agr. Forest Meteorol.*, 148, 1362–1373, 2008.
- Sánchez, B., Rasmussen, A., and Porter, J. R.: Temperatures and the growth and development of maize and rice: a review, *Glob. Change Biol.*, 20, 408–417, 2014.
- 30 Santanello Jr., J. A., Peters-Lidard, C. D., Kennedy, A., and Kumar, S. V.: Diagnosing the nature of land-atmosphere coupling: a case study of dry/wet extremes in the U. S. Southern Great Plains, *J. Hydrometeorol.*, 14, 3–24, 2013.

Schuh, A. E., Denning, A. S., Corbin, K. D., Baker, I. T., Uliasz, M., Parazoo, N., Andrews, A. E., and Worthy, D. E. J.: A regional high-resolution carbon flux inversion of North America for 2004, *Biogeosciences*, 7, 1625–1644, doi:10.5194/bg-7-1625-2010, 2010.

5 Silva, L. C. R. and Horwath, W. R.: Explaining global increases in water use efficiency: why have we overestimated responses to rising atmospheric CO₂ in natural forest ecosystems?, *PLoS ONE*, 8, e53089, doi:10.1371/journal.pone.0053089, 2013.

Sinclair, T. S. and de Wit, C. T.: Photosynthate and nitrogen requirements for seed production by various crops, *Science*, 189, 565–567, 1975.

10 Sitch, S., Smith, B., Prentice, I. C., Arneth, A., Bondeau, A., Cramer, W., Kaplan, J. O., Levis, S., Lucht, W., and Sykes, M. T.: Evaluation of ecosystem dynamics, plant geography and terrestrial carbon cycling in the LPJ dynamic global vegetation model, *Glob. Change Biol.*, 9, 161–185, 2003.

Sitch, S., Huntingford, C., Gedney, N., Levy, P. E., Lomas, M., Piao, S. L., Betts, R., Ciais, P., Cox, P., Friedlingstein, P., Jones, C. D., Prentice, I. C., and Woodward, F. I.: Evaluation of the terrestrial carbon cycle, future plant geography and climate–carbon cycle feedbacks using five Dynamic Global Vegetation Models (DGVMs), *Glob. Change Biol.*, 14, 2015–2039, doi:10.1111/j.1365-2486.2008.01626.x, 2008.

Smallman, T. L., Moncrieff, J. B., and Williams, M.: WRFv3.2-SPAv2: development and validation of a coupled ecosystem–atmosphere model, scaling from surface fluxes of CO₂ and energy to atmospheric profiles, *Geosci. Model Dev.*, 6, 1079–1093, doi:10.5194/gmd-6-1079-2013, 2013.

20 Smith, P. C., De Noblet-Ducoudré, N., Ciais, P., Peylin, P., Viovy, N., Meurdesoif, Y., and Bondeau, A.: European-wide simulations of croplands using an improved terrestrial biosphere model: Phenology and productivity, *J. Geophys. Res.*, 115, G01014, doi:10.1029/2008JG000800, 2010.

Sus, O., Williams, M., Bernhofer, C., Béziat, P., Buchmann, N., Ceschia, E., Doherty, R., Eugster, W., Grünwald, T., Kutsch, W., Smith, P., and Wattenbach, M.: A linked carbon cycle and crop developmental model: Description and evaluation against measurements of carbon fluxes and carbon stocks at several European agricultural sites, *Agr. Ecosyst. Environ.*, 139, 402–418, 2010.

25 Tao, Z., Santanello, J. A., Chin, M., Zhou, S., Tan, Q., Kemp, E. M., and Peters-Lidard, C. D.: Effect of land cover on atmospheric processes and air quality over the continental United States – a NASA Unified WRF (NU-WRF) model study, *Atmos. Chem. Phys.*, 13, 6207–6226, doi:10.5194/acp-13-6207-2013, 2013.

30 Tennekes, H.: A model for the dynamics of the inversion above a convective boundary layer, *J. Atmos. Sci.*, 30, 558–567, 1973.

- Teuling, A. J., Seneviratne, S. I., Stöckli, R., Reichstein, M., Moors, E., Ciais, P., Luysaert, S., van den Hurk, B., Ammann, C., Bernhofer, C., Dellwik, E., Gianelle, D., Gielen, B., Grünwald, T., Klumpp, K., Montagnani, L., Moureaux, C., Sottocornola, M., and Wohlfhart, G.: Contrasting response of European forest and grassland energy exchange to heatwaves, *Nat. Geosci.*, 3, 722–727, doi:10.1038/ngeo950, 2010.
- 5 Tolk, L. F., Peters, W., Meesters, A. G. C. A., Groenendijk, M., Vermeulen, A. T., Steeneveld, G. J., and Dolman, A. J.: Modelling regional scale surface fluxes, meteorology and CO₂ mixing ratios for the Cabauw tower in the Netherlands, *Biogeosciences*, 6, 2265–2280, doi:10.5194/bg-6-2265-2009, 2009.
- 10 Twine, T. E., Kustas, W. P., Norman, J. M., Cook, D. R., Houser, P. R., Meyers, T. P., Prueger, J. H., Starks, P. J., and Wesely, M. L.: Correcting eddy-covariance flux underestimates over a grassland, *Agr. Forest Meteorol.*, 103, 279–300, 2000.
- van Heerwaarden, C. C., Vilà-Guerau de Arellano, J., Moene, A. F., and Holtslag, A. A. M.: Interactions between dry-air entrainment, surface evaporation and convective boundary-layer development, *Q. J. Roy. Meteor. Soc.*, 135, 1277–1291, 2009.
- 15 van Heerwaarden, C. C., Vilà-Guerau De Arellano, J., Gounou, A., Guichard, F. and Couvreux, F.: Understanding the Daily Cycle of Evapotranspiration: A Method to Quantify the Influence of Forcings and Feedbacks, *J. Hydrometeorol.*, 11, 1405–1422, 2010a.
- Verhoef, A. and Egea, G.: Modeling plant transpiration under limited soil water: Comparison of different plant and soil hydraulic parameterizations and preliminary implications for their use in land surface models, *Agr. Forest Meteorol.*, 191, 22–32, doi:10.1016/j.agrformet.2014.02.009, 2014.
- Vilà-Guerau De Arellano, J., Gioli, B., Miglietta, F., Jonker, H. J. J., Baltink, H. K., Hutjes, R. W. A., and Holtslag, A. A. M.: Entrainment process of carbon dioxide in the atmospheric boundary layer, *J. Geophys. Res.-Atmos.*, 109, D18110, doi:10.1029/2004JD004725, 2004.
- 25 Vilà-Guerau de Arellano, J., van den Dries, K., and Pino, D.: On inferring isoprene emission surface flux from atmospheric boundary layer concentration measurements, *Atmos. Chem. Phys.*, 9, 3629–3640, doi:10.5194/acp-9-3629-2009, 2009.
- Vilà-Guerau de Arellano, J., van Heerwaarden, C. C., and Lelieveld, J.: Modelled suppression of boundary-layer clouds by plants in a CO₂-rich atmosphere, *Nat. Geosci.*, 5, 1–4, 2012.
- 30 Williams, I. N., Riley, W. J., Torn, M. S., Berry, J. A., and Biraud, S. C.: Using boundary layer equilibrium to reduce uncertainties in transport models and CO₂ flux inversions, *Atmos. Chem. Phys.*, 11, 9631–9641, doi:10.5194/acp-11-9631-2011, 2011.

Yin, X. and van Laar, H. H.: Crop Systems Dynamics: An Ecophysiological Simulation Model for Genotype-by-Environment Interactions, Wageningen Academic Publishers, Wageningen, the Netherlands, 2005.

5 Zhao, W. and Qualls, R. J.: Modeling of long-wave and net radiation energy distribution within a homogeneous plant canopy via multiple scattering processes, *Water Resour. Res.*, 42, W08436, doi:10.1029/2005WR004581, 2006.

Zhao, Y., Chen, S., and Shen, S.: Assimilating remote sensing information with crop model using Ensemble Kalman Filter for improving LAI monitoring and yield estimation, *Ecol. Model.*, 270, 30–42, 2013.

Table 1. Seasonal statistics of the daily integrated Qnet, LE, SH and NEE from Fig. 2. Statistics are computed from sowing to maturity dates. We present the observed and modelled means and standard deviations, the root mean squared error (RMSE) between the model and the observations (in the same units as the mean) and the R^2 between the model and the observations. Note that the large error on NEE is partly due to the inability of the model to reproduce the LAI after DOY 240 (see Fig. 1).

Variable [units]	Observed		Modelled		RMSE	R^2
	mean	stddev	mean	stddev		
Qnet [MJ m^{-2}]	8.9	3.7	8.1	4.4	1.4	0.95
LE [MJ m^{-2}]	5.9	2.5	5.5	3.5	1.8	0.75
SH [MJ m^{-2}]	1.7	1.3	1.8	1.7	1.1	0.59
NEE [$\text{g CO}_2 \text{ m}^{-2}$]	-15.8	19.5	-19.1	28.8	16.0	0.74

Table 2. ~~Diurnal~~ Daytime Integrals of Qnet, LE, SH and NEE from Fig. 3, calculated from 08:00 UTC to 18:00 UTC on the 4 August 2007.

	Qnet [MJ m ⁻²]	LE [MJ m ⁻²]	SH [MJ m ⁻²]	NEE [g CO ₂ m ⁻²]
Observations	14.4	9.7	3.4	-52.0
MXL-A-g _s	13.1	8.2	4.2	-41.4
MXL-GECROS	15.3	11.8	2.1	-65.0

Table A1. MXL model initial conditions for the 4 August 2007.

variable	description and unit	value
<i>latt</i>	latitude [° N]	51.59
<i>long</i>	longitude [° E]	5.38
<i>day</i>	date [DOY]	216
<i>cc</i>	cloud cover [-]	0.225
<i>h</i> ₀	initial boundary-layer height [m]	230.0
<i>pressure</i>	atmospheric pressure [hPa]	1022.0
<i>D</i>	large-scale divergence [s ⁻¹]	7×10^{-6}
<i>β</i>	entrainment ratio [-]	0.2
<i>θ</i> ₀	initial potential temperature [K]	286.0
$\Delta\theta_0$	initial potential temperature jump [K]	5.0
<i>γ</i> _θ	potential temperature lapse rate [K m ⁻¹]	8×10^{-3}
<i>advθ</i>	initial heat advection flux [K s ⁻¹]	3×10^{-4}
<i>advθtim</i>	time of heat advection stop [UTC]	10:00
<i>q</i> ₀	initial specific humidity [g kg ⁻¹]	8.5
Δq_0	initial specific humidity jump [g kg ⁻¹]	-1.0
<i>γ</i> _q	specific humidity lapse rate [g kg ⁻¹ m ⁻¹]	-0.0005
<i>advq</i>	initial humidity advection flux [g kg ⁻¹ s ⁻¹]	3.5×10^{-4}
<i>advqtim</i>	time of humidity advection stop [UTC]	07:30
<i>c</i> ₀	initial CO ₂ mole fraction [ppm]	422.0
Δc_0	initial CO ₂ mole fraction jump [ppm]	-50.0
<i>γ</i> _c	CO ₂ mole fraction lapse rate [ppb m ⁻¹]	-10.0
<i>u</i> ₀	initial mixed-layer u-wind speed [m s ⁻¹]	5.0
<i>u</i> _g	geostrophic u-wind speed [m s ⁻¹]	8.0
<i>γ</i> _u	free troposphere u-wind speed lapse rate [s ⁻¹]	0.0
<i>z</i> _{0,m}	roughness length for momentum [m]	0.15
<i>z</i> _{0,h}	roughness length for scalars [m]	0.015

Table A2. A-g_s model initial conditions for the 4 August 2007.

variable	description and unit	value
albedo	surface albedo [-]	0.198
LAI	Leaf Area Index [m ² m ⁻²]	3.5
f_{veg}	Vegetation fraction [-]	0.97
$r_{s, min}$	Minimum resistance for transpiration [s m ⁻¹]	180.0
$r_{s, soil min}$	Minimum soil resistance [s m ⁻¹]	50.0
Λ	Thermal diffusivity skin layer [W m ⁻² K ⁻¹]	2.5
g_D	VPD correction factor for rs [-]	0.
CG_{sat}	Saturated heat soil conductivity [K m ⁻² J ⁻¹]	3.56×10^{-6}
C_w	Constant water stress correction [-]	0.0016
T_s	Initial surface temperature [K]	290.0
T_{soil}	Temperature of top soil layer [K]	288.0
T_2	Temperature of deeper soil layer [K]	289.0
w_g	Water content top soil layer [cm ³ cm ⁻³]	0.11
w_2	Water content deep soil layer [cm ³ cm ⁻³]	0.11
w_{sat}	Saturation water content [cm ³ cm ⁻³]	0.36
w_{fc}	Field capacity water content [cm ³ cm ⁻³]	0.15
w_{wilt}	Wilting point water content [cm ³ cm ⁻³]	0.06
$w_{s, max}$	Upper reference value soil water [-]	0.55
$w_{s, min}$	Lower reference value soil water [-]	0.005
$C_{1, sat}$	Coefficient force term moisture [-]	0.132
$C_{2, ref}$	Coefficient restore term moisture [-]	1.8
a	Clapp and Hornberger retention curve parameter a [-]	0.219
b	Clapp and Hornberger retention curve parameter b [-]	4.9
p	Clapp and Hornberger retention curve parameter c [-]	4.
Γ (298 K)	CO ₂ compensation concentration at 298 K [mg m ⁻³]	4.3
$Q_{10} \Gamma$	percentage of increase in Γ (298 K) with +10 K [-]	1.5
g_m (298 K)	mesophyll conductance at 298 K [mm s ⁻¹]	17.5
$Q_{10} g_m$	percentage of increase in g_m with +10 K [-]	2.0
$T_1 g_m$	reference temperature T_1 for g_m [K]	286.0
$T_2 g_m$	reference temperature T_2 for g_m [K]	309.0
$A_{m, max}$ (298 K)	CO ₂ maximal primary productivity at 298 K [mg m ⁻² s ⁻¹]	1.7
$Q_{10} A_m$	percentage of increase in $A_{m, max}$ with +10 K [-]	2.0
$T_1 A_m$	reference temperature T_1 for $A_{m, max}$ [K]	286.0
$T_2 A_m$	reference temperature T_2 for $A_{m, max}$ [K]	311.0
f_0	maximum value C_{frac} [-]	0.85
a_d	regression coefficient for C_{frac} [kPa ⁻¹]	0.15
α_0	initial low light conditions [mg J ⁻¹]	0.014
K_x	extinction coefficient for PAR [-]	0.7
g_{min}	cuticular minimum conductance [m s ⁻¹]	2.5×10^{-4}
R_{10}	Respiration at 10 °C [mg CO ₂ m ⁻² s ⁻¹]	0.03
E_{act0}	Activation energy [kJ kmol ⁻¹]	5.33×10^4

Table A3. GECROS model initial conditions for the 4 August 2007. See Yin and van Laar (2005); Sinclair and de Wit (1975) for the rest of the maize average genotype parameters.

variable	description and unit	value
SLP	short day crop	yes
DETER	determinate crop	yes
C3C4	C4 crop	yes
LODGE	lodgingallowed	no
LEGUME	legume crop	no
NPL	plant density [plant m ⁻²]	9.1
EG	efficiency of germination [%]	3.6783
HTMX	maximum plant height [m]	2.8
BLD	leaf angle [deg]	50.
SEEDW	seed weight [g]	0.5
MTDV	minimal thermal days for vegetative phase [d]	41.0
MTDR	minimal thermal days for reproductive phase [d]	15.7
PSEN	photoperiod sensitivity of phenological development [h ⁻¹]	0.
TM	development stage when transition from CB to CX is fastest [-]	1.5
CX	factor for initial N concentration of seed fill [-]	1.
CB	factor for final N concentration of seed fill [-]	1.
PNLS	fraction of dead leaf N incorporated into soil litter [-]	1.
CLAY	percentage of clay in the soil [%]	7.
WCMAX	soil water content at maximum holding capacity [m ³ m ⁻³]	0.36
WCFC	soil water content at field capacity [m ³ m ⁻³]	0.15
WCMIN	minimum soil water content [m ³ m ⁻³]	0.06
RPMRO	decomposition rate for resistant plant material [yr ⁻¹]	0.3
DPMRO	decomposition rate for decomposable plant material [yr ⁻¹]	10.
HUMR	decomposition rate for humidified organic matter [yr ⁻¹]	0.02
BIOR	decomposition rate for microbial in the soil [yr ⁻¹]	0.66
DRPM	ratio DPM/RPM of added plant material [-]	1.44
RA	residual ammonium-N in the soil [g N m ⁻²]	1.
FBIOC	fraction of initial microbial biomass in the soil in the initial total soil organic carbon (TOC) [-]	0.03
BHC	initial soil microbial biomass + humified soil organic matter [g C m ⁻²]	3500.
TOC	total organic C in the soil [g C m ⁻²]	7193.
RN	residual nitrate-N in the soil [g N m ⁻²]	1.
MULTF	multiplication factor for initial soil water status [-]	1.
TCT	time constant for soil temperature dynamics [d]	4.
RSS	soil resistance for water vapor transfer, equivalent to leaf stomatal resistance [s m ⁻¹]	80.
SD1	thickness of upper evaporative soil layer [cm]	5.
TCP	time constant for some soil dynamic processes [d]	1.
FNA1	ammonium-N added in the 1st fertilizer application [g N m ⁻² d ⁻¹]	10.
FNA1T	day number at which the 1st ammonium-N dose is applied [DOY]	1.

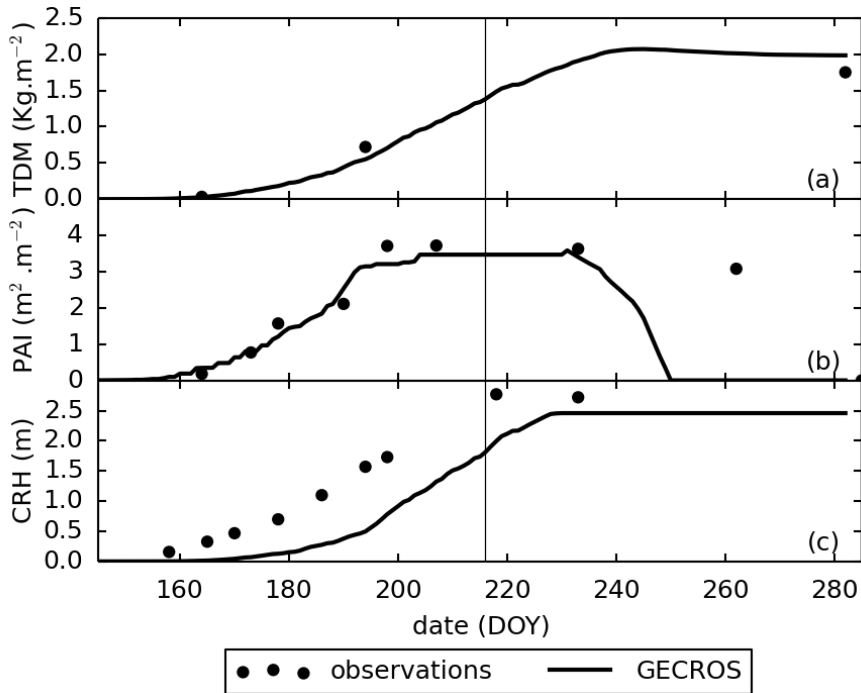


Figure 1. Seasonal evolution of the (a) maize total dry matter (TDM), (b) plant area index (PAI) and (c) crop height (CRH), from sowing to maturity dates. The vertical continuous line represents the 4 August 2007, the date at which we dynamically couple both the MXL-GECROS and MXL-A-g_s models (see assessment of these couplings in Sect. 3.1).

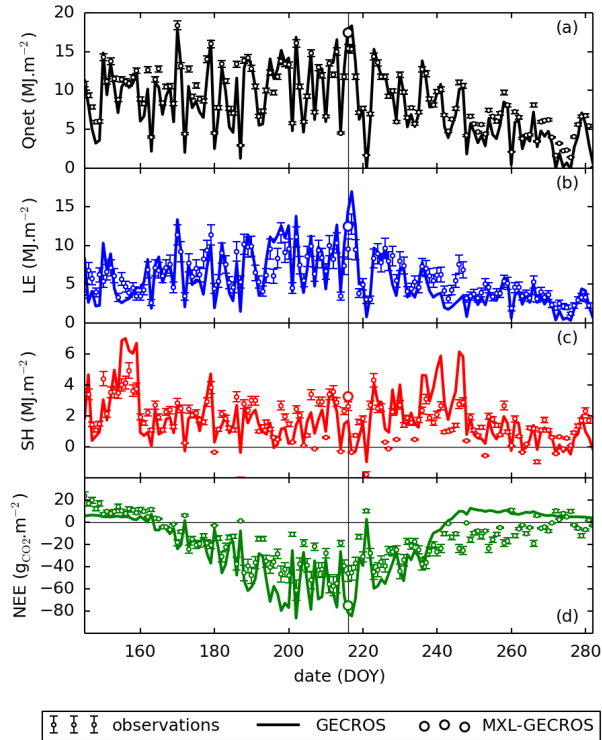


Figure 2. Daily integrated (a) net radiation (Q_{net}), (b) latent heat flux (LE), (c) sensible heat flux (SH) and (d) net ecosystem exchange (NEE) at the maize site, from sowing to maturity dates. The integration is computed each day, using the average daytime flux times the daytime number of seconds. Days with more than 20 % measurement gaps are discarded. Errors are computed as a direct sum of the Eddy Covariance random errors for instantaneous fluxes, which are presented in Sect. 4.4 of Aubinet et al. (2012). The vertical continuous line represents the 4 August 2007, the date at which we dynamically couple both the MXL-GECROS and MXL-A- g_s models (see assessment of these couplings in Sect. 3.1).

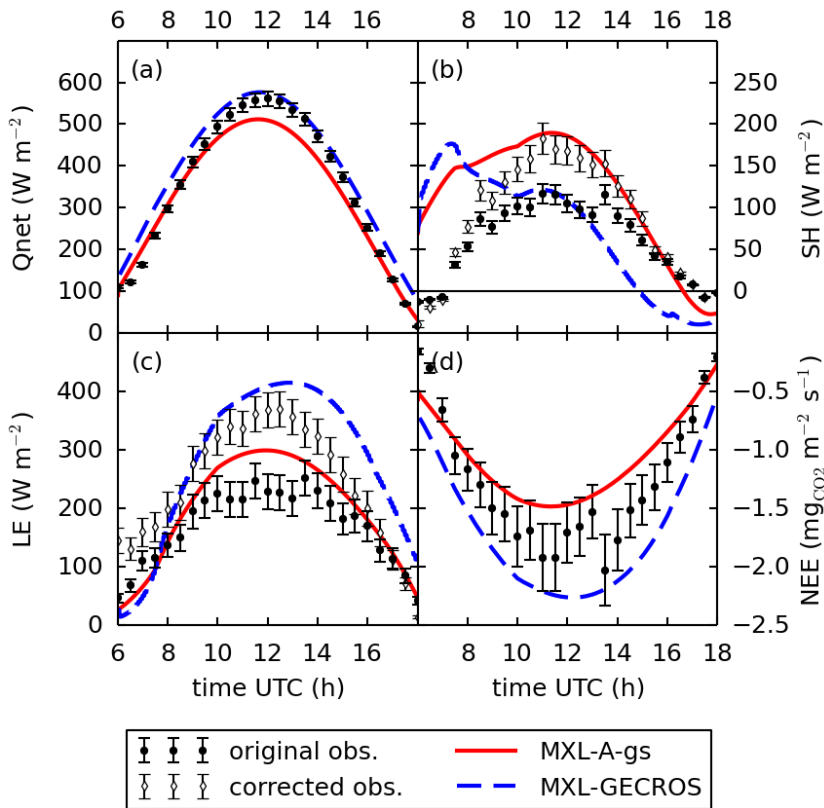


Figure 3. ~~Diurnal~~ Daytime diurnal cycle of the (a) net radiation (Qnet), (b) sensible heat flux (SH), (c) latent heat flux (LE), and (d) net ecosystem exchange (NEE), on the 4 August 2007. For comparison with the models, we corrected the observations to allocate the residual of the surface energy balance into extra SH and LE (see Sect. 2.1). The error bars represent the average Eddy Covariance random errors of Aubinet et al. (2012, see Sect. 4.4). NEE is negative when CO₂ is being removed from the atmosphere. Differences in NEE between the two couplings directly reflect differences in net plant photosynthesis, as soil respiration is identical between the two models.

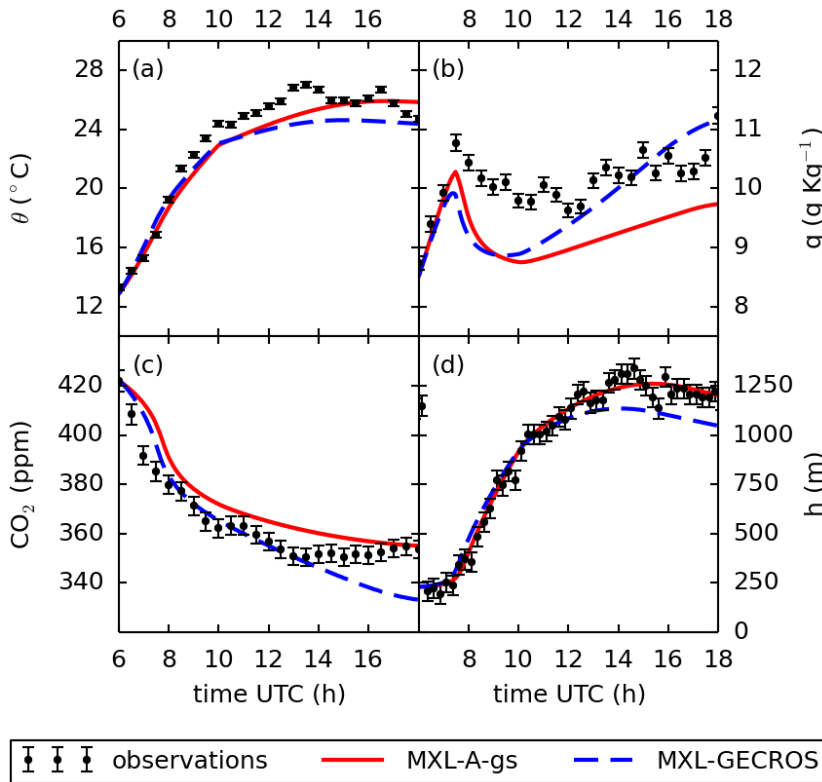


Figure 4. Diurnal cycle of (a) the potential temperature θ , (b) the specific humidity q , (c) the CO_2 mole fraction and (d) the boundary-layer height h , at the maize site, on the 4 August 2007. The errors for the θ , q and CO_2 measurements are obtained based on the factory specifications of the instruments. The error for h is assumed to be constant and equal to 50 m (personal communication, Henk Klein Baltink). Note that, in order to reproduce the early morning temperature and humidity variations, we prescribed advection of heat until 10:00 UTC and advection of humidity until 07:30 UTC (see settings in Table A1).

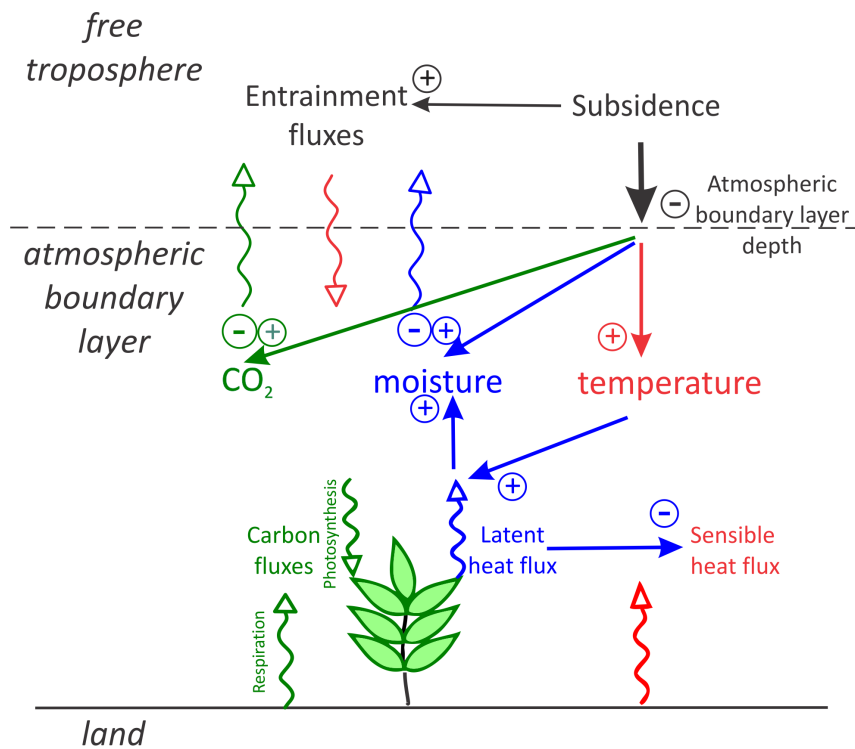


Figure 5. Interactions between the carbon (green), water (blue) and heat (red) cycles in the coupled land-ABL system. Increased subsidence tends to reduce the boundary-layer height, which directly causes the ABL to warm up, dry and become CO₂-depleted. This in turn affects the land-surface, which feeds back on the ABL by shifting its Bowen ratio towards more evapotranspiration.

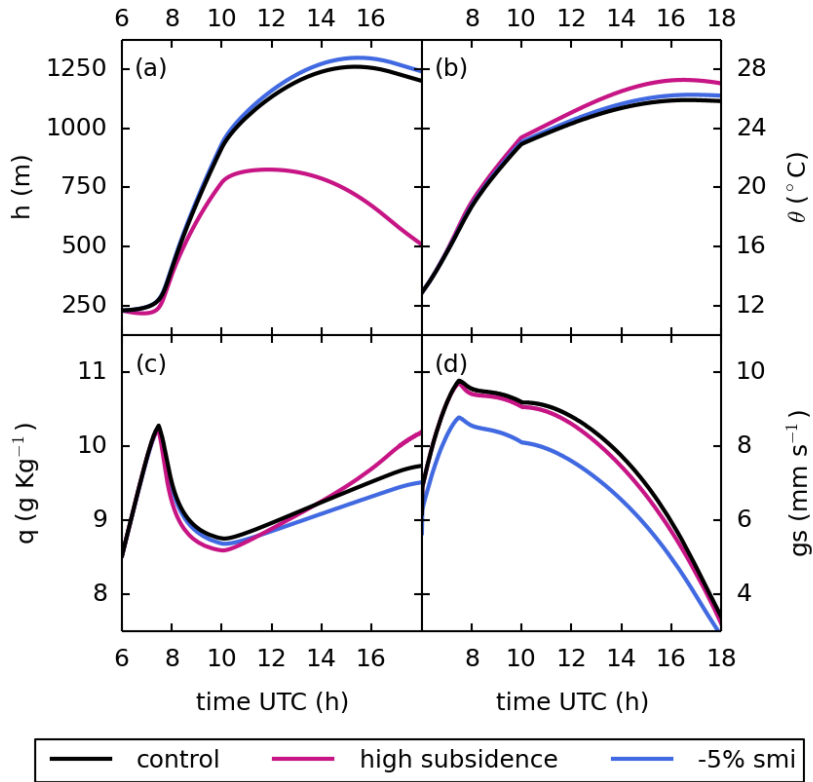


Figure 6. Boundary layer and surface response to high subsidence and soil moisture depletion. High subsidence, an upper atmosphere forcing, directly impacts the boundary-layer height h , and affects the specific humidity q and the potential temperature θ . This contrasts with soil moisture depletion, a surface forcing, which acts through the stomatal conductance g_s to impact the evapotranspiration and q .

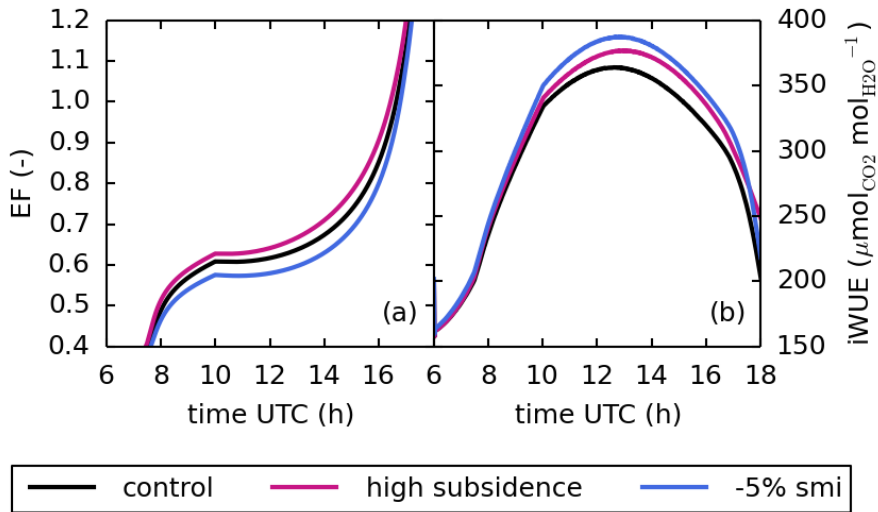


Figure 7. The response of surface exchange to high subsidence and soil moisture depletion. High subsidence and soil moisture depletion both shift the evaporative fraction ($EF = LE/(SH + LE)$) by 5 % on average, and both increase the intrinsic water use efficiency ($iWUE = NPP/g_s$) by respectively 3 % and 6 % on average, as a result of two different mechanisms (respectively an increase of VPD and a stomata closure).

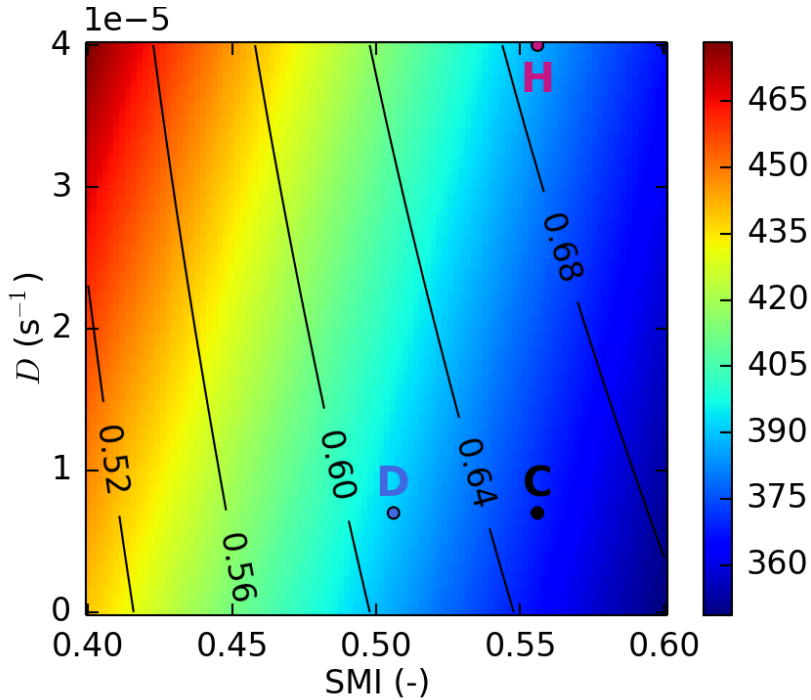


Figure 8. Response of the 14:00 UTC iWUE ($\mu\text{mol}_{\text{CO}_2} \text{mol}_{\text{H}_2\text{O}}^{-1}$, in colors) and EF (unitless, in contours) to seasonal variations of SMI and the large-scale divergence (D). Scatter points represent the Control case (C), the Dry (-5% SMI) case (D) and the High subsidence case (H) of Figs. 6&7.

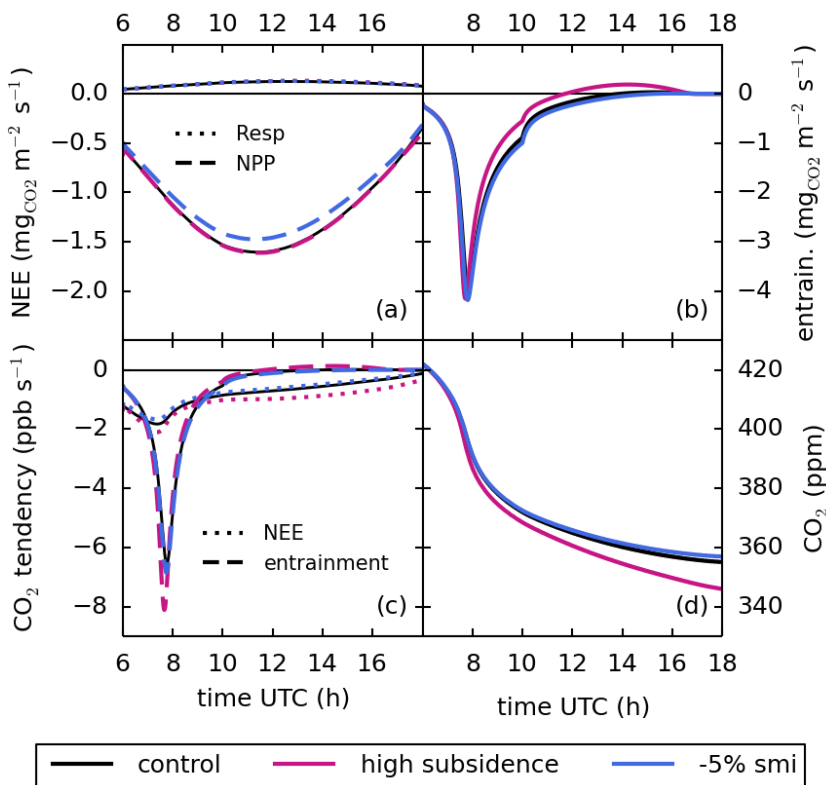


Figure 9. Contributions of the surface and entrainment fluxes to the atmospheric CO₂ budget. Net photosynthesis (NPP) and soil respiration (Resp) combine at the surface to form NEE, while the entrainment of CO₂ (entrain.) takes place at top of the boundary layer. All these fluxes are negative when CO₂ is being removed from the boundary layer. The CO₂ tendencies, which determine the [daytime](#) diurnal cycle of CO₂, are obtained by dividing these CO₂ fluxes by the instantaneous [change-in](#)-boundary-layer height.