

This discussion paper is/has been under review for the journal Biogeosciences (BG).  
Please refer to the corresponding final paper in BG if available.

# Quantification of iron-rich volcanogenic dust emissions and deposition over ocean from Icelandic dust sources

O. Arnalds<sup>1</sup>, H. Olafsson<sup>2,3,4</sup>, and P. Dagsson-Waldhauserova<sup>1,2</sup>

<sup>1</sup>Agricultural University of Iceland, Hvanneyri, 311 Borgarnes, Iceland

<sup>2</sup>University of Iceland, Reykjavik, Iceland

<sup>3</sup>The Icelandic Meteorological Office, Reykjavik Iceland

<sup>4</sup>Bergen School of Meteorology, Geophysical Institute, University of Bergen, Norway

Received: 27 February 2014 – Accepted: 7 April 2014 – Published: 28 April 2014

Correspondence to: O. Arnalds (oa@lbhi.is)

Published by Copernicus Publications on behalf of the European Geosciences Union.

BGD

11, 5941–5967, 2014

Iron rich dust from  
Iceland

O. Arnalds et al.

Title Page

Abstract

Introduction

Conclusions

References

Tables

Figures

◀

▶

◀

▶

Back

Close

Full Screen / Esc

Printer-friendly Version

Interactive Discussion



## Abstract

Iceland has extremely active dust sources that result in large scale emissions and deposition on land and sea. The dust has volcanogenic origin of basaltic composition with about 10% Fe content. We used two independent methods to quantify dust emission from Iceland and dust deposition on sea. Firstly, aerial extent (map) of deposition on land was extended to ocean areas around Iceland. Secondly, survey of number of dust events over the past decades and calculations of emissions and sea deposition for the dust storms were made. The results show total emissions range from 30.5 (dust event based calculation) to 40.1 million tons (map calculation), which places Iceland among the most active dust sources on Earth. Ocean deposition ranges between 5.5 (dust events calculations) and 13.8 million tons (map calculation). Calculated iron deposition from Icelandic dust ranges between 0.56 to 1.4 million tons, which are distributed over wide areas ( $> 370\,000\text{ km}^2$ ) and consist of fine reactive volcanic materials. The paper provides the first quantitative estimate of total dust emissions and oceanic deposition from Iceland. Iron is a limiting nutrient for primary production in the oceans around Iceland and the dust is likely to affect Fe levels in Icelandic ocean waters.

## 1 Introduction

Dust emissions from barren areas have pronounced influences on Earth's terrestrial and oceanic ecosystems, the atmosphere, climate and human health (Field et al., 2010; Ayris and Delmelle, 2012a). Global estimates of mean annual dust emissions range from 500 to 5000 million tons per year with most estimates between 1000 and 2000 million tons, but the global oceans are commonly estimated to receive 300–500 million tons (reviewed by Engelstaedter et al., 2006). Dust production is mainly attributed to unstable barren areas in dry climates with northern Africa being the largest contributor of dust to the atmosphere (Engelstaedter et al., 2006). Other commonly cited dust sources include Mongolia (e.g., Natsagdorj et al., 2003), Aral Sea Basin (Singer et al.,

BGD

11, 5941–5967, 2014

## Iron rich dust from Iceland

O. Arnalds et al.

Title Page

Abstract

Introduction

Conclusions

References

Tables

Figures

◀

▶

◀

▶

Back

Close

Full Screen / Esc

Printer-friendly Version

Interactive Discussion



**Iron rich dust from  
Iceland**

O. Arnalds et al.

[Title Page](#)[Abstract](#)[Introduction](#)[Conclusions](#)[References](#)[Tables](#)[Figures](#)[◀](#)[▶](#)[◀](#)[▶](#)[Back](#)[Close](#)[Full Screen / Esc](#)[Printer-friendly Version](#)[Interactive Discussion](#)

2003), Middle East (Jamalizadeh et al., 2008), Australia (Ekström et al., 2004; Leys et al., 2011) and southern USA (e.g., Sweeney et al., 2011). However, dust emissions from the Arctic and Antarctic have received increased attention (Arnalds, 2010; Bullard, 2013; Gillies et al., 2013; Muhs et al., 2013). Research shows frequent dust storms in South Iceland into the North Atlantic Ocean (Arnalds and Metúsalemsson, 2004; Prospero et al., 2012) and into the Arctic from Northeast Iceland (Dagsson-Waldhauserova et al., 2013a), and it has been suggested that Iceland is among the world's most active dust sources (Arnalds, 2010; Prospero et al., 2012; Blechschmidt et al., 2012; Bullard, 2013).

Volcanic eruptions have recently become a focus of attention due to possible global nutrient additions to the oceans, including significant iron inputs that are potentially important for primary production (e.g., Duggen et al., 2010; Olgun et al., 2011; Ayris and Delmelle, 2012a). Achterberg et al. (2013) measured significantly elevated iron levels south of Iceland during the 2010 Eyjafjallajökull eruption. Volcanic ash is commonly subjected to intense aeolian redistribution (see Arnalds, 2010, 2013; Ayris and Delmelle, 2012a; Bullard, 2013), as was witnessed after the 2010 Eyjafjallajökull eruption (Thorsteinsson et al., 2012). Furthermore, some glaciogenic Arctic dust sources are composed of iron rich volcanic deposits, such as in Iceland (Baratoux et al., 2011; Prospero et al., 2012; Dagsson-Waldhauserova et al., 2013b) and some parts of Alaska (Muhs et al., 2013). In Iceland, these aeolian materials are primarily poorly crystallized basaltic materials (glass) containing high quantities of iron, which can have a substantial impact on the ocean chemistry and fertility. The iron from dust has pronounced effects on the global carbon cycle and atmospheric CO<sub>2</sub> (Jickells et al., 2005; Mahowald et al., 2005; Misumi et al., 2014). Schulz et al. (2012) noted that little is known about the mechanics and quantities of dust deposition in the oceans, with large uncertainties of the iron contents available for marine phytoplankton.

In spite of the importance for the oceanic nutrient cycles, little is known how much volcanic material is blown to the oceans around Iceland. Here we present the first quantitative estimate of the total dust emissions from Iceland and the first quantitative

estimate of aeolian redistribution of the volcanic materials and iron to the ocean areas from Iceland. These estimates are based on: (i) number of dust-events generated from weather records over several decades throughout Iceland; (ii) numerical calculations of selected dust storms; (iii) modification and extension of established sedimentation rates on land to oceanic areas.

## 2 Setting: the Icelandic dust sources

Iceland is a volcanic island on the active Mid-Atlantic Ridge, with about 30 active volcanic systems with volcanic eruptions occurring every 3–5 years on average (Thor-darson and Höskuldsson, 2008). About 10 % of the country is covered with glaciers, including the 8100 km<sup>2</sup> Vatnajökull Glacier (Fig. 1). Many active volcanoes are located under the glaciers, including the Katla volcanic system under Mýrdalsjökull Glacier, and the Grímsvötn and Bárðarbunga systems under the Vatnajökull Glacier (Fig. 1).

Glacial rivers bring heavy sediment loads, creating extensive glacio-fluvial outwash plains in many areas. These plains are often flooded during summer melt, leaving sediments on the surfaces that are extremely vulnerable to redistribution by wind (Fig. 2). Many of these areas have been identified as major dust plume sources or dust hotspots (Arnalds, 2010). Sandy deserts of Iceland are, however, much larger than these main dust plume sources, or about 15 000 km<sup>2</sup> in all, and most of these areas can emit dust during the highest intensity dry winds (see Arnalds, 2010). In addition to plume areas (hot spots) and the sandy areas in general, there can be periods of dust generation after deposition of ash from volcanic eruptions on poorly vegetated and barren land, as witnessed after the 2010 Eyjafjallajökull and 2011 Grímsvötn eruptions (Leadbet-ter et al., 2012; Arnalds et al., 2013). Furthermore, fluvial outburst events associated with eruptions under glacier can leave unstable sediments that result in frequent dust events (Prospero et al., 2012).

Most dust emission events in NE Iceland are driven by low sea level pressure (SLP) west of Iceland (and/or high SLP east of Iceland) which leads to warm geostrophic

**BGD**

11, 5941–5967, 2014

## Iron rich dust from Iceland

O. Arnalds et al.

Title Page

Abstract

Introduction

Conclusions

References

Tables

Figures

◀

▶

◀

▶

Back

Close

Full Screen / Esc

Printer-friendly Version

Interactive Discussion



southerly winds. Dust events in S Iceland are generally linked to reserved east-west SLP which turns to cold geostrophic Arctic winds (Björnsson and Jonsson, 2003; Dagsson-Waldhauserova et al., 2013a, b).

### 3 Methods

#### 3.1 Dust event frequency

Visibility is an important indicator of dust event severity where dust concentration measurements are not available. Long-term frequency of atmospheric dust observations has been investigated in detail for NE Iceland (Dagsson-Waldhauserova et al., 2013a) and for the southern part of Iceland (Dagsson-Waldhauserova et al., 2013c) based on present weather observations at 8 weather stations in NE Iceland, 15 stations in S Iceland and 7 stations in NW Iceland. A dust day was defined as a day when at least one station observed at least one dust observation. For this study, we included synoptic codes 04-06 for “Visibility reduced by volcanic ashes”, “Dust haze” and “Widespread dust in suspension in the air” into the criteria for dust observation (see Dagsson-Waldhauserova et al., 2013a for details). The most frequent were dust observations of “Suspended” and “Moderate suspended” dust (NE 73 %; S 52 %) with visibility 10–70 km, “Severe” and “Moderate haze” (NE 23 %; S 42 %) with visibility 1–10 km, and “Severe” and “Moderate” dust storm (NE 4 %; S 6 %) with visibility less than 1 km. The total number of dust days in Iceland, based on averages presented (Dagsson-Waldhauserova et al., 2013a, b), is 135 dust days per year on average in Iceland in 1949–2011. About 34 dust days were observed annually in NE Iceland and about 101 dust days annually in southern part of Iceland.

#### 3.2 Calculated dust storm emissions and transport to oceanic areas

The estimation of dust transport was based on several sources of atmospheric data. Similar methodology has been used to calculate emissions from single storms by Leys

**BGD**

11, 5941–5967, 2014

## Iron rich dust from Iceland

O. Arnalds et al.

Title Page

Abstract

Introduction

Conclusions

References

Tables

Figures

◀

▶

◀

▶

Back

Close

Full Screen / Esc

Printer-friendly Version

Interactive Discussion



**Iron rich dust from  
Iceland**

O. Arnalds et al.

[Title Page](#)[Abstract](#)[Introduction](#)[Conclusions](#)[References](#)[Tables](#)[Figures](#)[I◀](#)[▶I](#)[◀](#)[▶](#)[Back](#)[Close](#)[Full Screen / Esc](#)[Printer-friendly Version](#)[Interactive Discussion](#)

et al. (2011). The concentration of dust is based on: (i) observed visibility at manned weather stations; (ii) the horizontal extension of the dust plumes; and (iii) the representativeness of the visibility observations are estimated from MODIS satellite images. The winds in the atmospheric boundary-layer were estimated from ground-based and upper-air observations as well as numerical simulation, and the thickness of the boundary-layer was estimated from the upper-air observations and numerical simulations. The upper-air observations are made at 00:00 and 12:00 UTC at Keflavik, SW-Iceland and Egilsstaðir, E-Iceland. The numerical model, Harmonie (based on Arome, see Seity et al., 2011) was run with subgrid 1-D turbulence scheme based on Cuxart et al. (2000) with a horizontal resolution of 2.5 km. The simulations are based on initial and boundary-conditions from the operational suite of the ECMWF.

Four dust-storms originating at Dyngjusandur major dust source north of Vatnajökull (Fig. 1) were selected for estimation of the total transport of suspended dust. In all four storms, the visibility in the dust plume was observed and recorded, and the vertical, horizontal and temporal extension of the plume was estimated from the available data. For a 1–2 km thick convective boundary-layer the dust can be expected to be quite well mixed vertically after advection of about 100 km in 1–2 h. The sea front is located at 200 km from the dust source in NE Iceland and 140 km in east Iceland, but the window was calculated at about 90 km for NE direction (three storms) and 155 for the E direction (one storm), which is determined by the location of weather stations. The boundary-layer winds are typically 15–23 ms<sup>-1</sup> and the height of the boundary layer is of the order of 1–2 km. This may sound low, but it should be kept in mind that dust-storms occur typically in stable stratified flow and that there is limited heating from the ground due to little solar radiation in Iceland and short advection time of the air-mass over land. The selected storms all lasted less than 24 h. The calculated total amount emitted materials was from 215 000 to 384 000 tons. Materials transported as dust through the calculated window ranged from 75 000 to 160 000 tons in each storm (Table 1).

### 3.3 GIS-based dust deposition distribution

An aeolian deposition map for Iceland was presented by Arnalds in 2010. The map is based on soil metadata showing thicknesses between tephra layers (volcanic ash) of known age, main dry winds from each major dust source and landscape parameters downwind from the sources. This deposition illustrated on the map has close relationship with iron content measured in mosses which is primarily wind deposited (data and map published by Magnússon, 2013), fertility of ecosystems as reflected by bird abundance (Gunnarsson et al., 2014), but also many basic soil parameters such as pH, organic content and clay formation (Arnalds, 2008, 2010). We have extended the map to oceanic areas and included categories for very low deposition furthest away and extreme deposition closest to the aeolian sources. The map now shows six broad categories of deposition in  $\text{g m}^{-2} \text{yr}^{-1}$ : (i) very low, 1–15 (added to the previous map of Arnalds, 2010); (ii) low, 10–50; (iii) medium, 25–100; (iv) high 75–250; very high (v) 250–500  $\text{g m}^{-2} \text{yr}^{-1}$  and (vi) and extreme, 500–800  $\text{g m}^{-2} \text{yr}^{-1}$  (added to the previous map). The map is presented in Fig. 3. Note that the deposition range for each class overlaps with the next. The highest class (extreme) is expected to receive  $> 800 \text{ g m}^{-2} \text{yr}^{-1}$  at some landscape positions. Mean deposition on glaciers was estimated at  $400 \text{ g m}^{-2} \text{yr}^{-1}$  based on the deposition map. The aerial distribution of the deposition classes over sea is in part based on a number of satellite images (MODIS; Aqua and Terra) taken over the past decade. These images show plumes extending several hundred km south into the Atlantic Ocean and northeast into the Arctic Ocean. We expect that most of the dust settles relatively close to the source with a logarithmic drop in sedimentation with distance from the source (Fig. 4).

### 3.4 Iron content of the dust materials

The chemical composition of the major of sand sources can be determined from published materials. The common range for iron in Icelandic volcanic rocks is from 6.5 to 12.5 % with an average about 9.4 % judging from review data presented by Jakobsson

**BGD**

11, 5941–5967, 2014

## Iron rich dust from Iceland

O. Arnalds et al.

Title Page

Abstract

Introduction

Conclusions

References

Tables

Figures

◀

▶

◀

▶

Back

Close

Full Screen / Esc

Printer-friendly Version

Interactive Discussion



et al. (2008) (andesite and basalts). The Dyngjusandur plume source, the primary dust source in NE Iceland has 9.4 % Fe content, made of volcanic glass (Baratoux et al., 2011). The Hagavatn plume source has similar iron content, but is made of more crystalline basalt grains (Baratoux et al., 2011). Óladóttir et al. (2011) reported slightly lower Fe content in tephra for volcanic systems under Vatnajökull glacier (Bárdarbunga and Grímsvötn) or 9.2 %, based on a large number of determinations. Tephra from the Katla volcanic system under Mýrdalsjökull glacier has similar but slightly higher Fe contents, mostly 10–11 % (Óladóttir et al., 2008). The Katla, Grímsvötn systems are responsible for the majority of dust going south from Iceland, which is the majority of the Icelandic oceanic dust. Thus, in this paper we have selected the average of 10 % Fe in volcanic dust from Iceland.

## 4 Results

### 4.1 Dust quantities based on frequency and calculated emissions

We found that there are 135 dust storm events that occur on average in Iceland each year. However, some storms are unnoticed by weather stations, (north winds at the Mýrdalssandur and Skeidarársandur dust sources). The total emissions derived are 30.5 million tons per year over land and sea. Majority is deposited on land (25 million tons), while 5.6 million tons are deposited over sea, mostly from the south shore (Table 2). The emissions per medium storm are about 300 000 tons per storm according to these calculations, but “minor” storms of about 100 000 ton emissions are most frequent (75.6 annually).

The path of dust over land is much longer in NE Iceland, or 130–150 km from the Dyngjusandur major source, but shorter distances from other sandy areas. More is therefore deposited over land from NE Iceland and we estimate that only 10 % of dust emitted from the NE Iceland reaches the oceans, based on the calculations presented in Sect. 3.2, which gave transport through a window at 90–155 km distance of the order

**BGD**

11, 5941–5967, 2014

## Iron rich dust from Iceland

O. Arnalds et al.

[Title Page](#)

[Abstract](#)

[Introduction](#)

[Conclusions](#)

[References](#)

[Tables](#)

[Figures](#)

[◀](#)

[▶](#)

[◀](#)

[▶](#)

[Back](#)

[Close](#)

[Full Screen / Esc](#)

[Printer-friendly Version](#)

[Interactive Discussion](#)





of 75 000 to 160 000 tons in each storm (see Table 1). This drop in deposition rates with distance from the source is supported by the drop indicated by the deposition map (see graph in Fig. 4 above), but it is a conservative estimate of the proportion of dust materials reaching the sea in NE Iceland considering dust storm calculations presented in Table 1. Many of the major dust sources of South Iceland are located close to the shoreline (Fig. 1), and we estimate that 50 % of the dust emissions reach oceanic areas, which we consider a conservative estimate.

## 4.2 Total deposition on land and sea based on GIS deposition map

The results from the calculations of dust deposition on land and oceans around Iceland are presented in Table 3. There is a logarithmic drop in deposition with distance from the source. We used the lower 25 % percentile for deposition within each range, reflecting the logarithmic drop, as the areas increase in size away from the sources. The results show that about 40.1 million tons are deposited annually on land, glaciers and sea. This number compares to the 30.5 million tons of total emissions calculated from storm frequency and dust intensity. These results for the total emissions (40.1 vs. 30.5 million tons) are relatively comparable and provide the first estimate of total dust emissions from Icelandic dust sources.

About 14 million tons are deposited on about 370 000 km<sup>2</sup> ocean area according to the GIS deposition map, but about 26 million tons on about 103 000 km<sup>2</sup> on land (including glaciers). These map-based deposition values for land and glaciers (26 million tons) is very comparable to the 25 million tons calculated from number and the severity of storms for land. However, the map calculations indicate higher (14 million tons) deposition to oceans than the storm calculation method (5.5 million tons).

## 4.3 Oceanic iron deposition from Iceland

The values obtained from calculations of emissions on one hand (Sect. 3.1) and deposition based on the GIS map (Sect. 3.2.) give a range for probable rates of deposition to

**BGD**

11, 5941–5967, 2014

## Iron rich dust from Iceland

O. Arnalds et al.

Title Page

Abstract

Introduction

Conclusions

References

Tables

Figures

◀

▶

◀

▶

Back

Close

Full Screen / Esc

Printer-friendly Version

Interactive Discussion



the oceans, from 5.5 to 13.8 million tons, respectively. Using these numbers, it can be inferred that the total iron deposition to the oceans (about 1/10 of the weight), is about 0.5–1.4 million tons in total per year (Table 3). The Fe sediment rates vary immensely from 0.1–0.5 gm<sup>-2</sup> yr<sup>-1</sup> for areas far from Iceland to > 13 gm<sup>-2</sup> yr<sup>-1</sup> close to the southern shore. The last column in Table 3 shows an estimate of bioavailable Fe based on evidence presented by Achterberg et al. (2013) after the 2010 Eyjafjallajökull eruption (see Discussion). The bioavailable iron ranges from 0.02–0.1 mgm<sup>-2</sup> yr<sup>-1</sup> far from the sources to 2.8–10 mgm<sup>-2</sup> yr<sup>-1</sup> closest to the sources in South Iceland. Maximum numbers of > 50 mgm<sup>-2</sup> yr<sup>-1</sup> can be expected in localized areas.

## 5 Discussion

### 5.1 Total dust emissions from Iceland

Our research indicates that total emissions of dust from Icelandic dust sources are of the range 30 to 40 million tons annually, with the majority of the sediments deposited on land. The two different values reflecting this range are obtained by independent methods, but are, however, in relatively good agreement. The deposition rates used for obtaining the total emissions from the GIS map are in good agreement with local and regional deposition values reviewed by Lawrence and Neff (2009), especially close to the sources. More uncertainties are in the values far from the sources with deposition rates as low as 1 gm<sup>-2</sup> yr<sup>-1</sup>, with large areal extent. Judging from the difference between the calculated deposition (from number of events and their severity), and extending the aeolian deposition map, it is likely that deposition on distant sources is somewhat overestimated. Data for deposits on land acquired for the construction of the deposition map is also less reliable for those areas (thin deposits and fewer ash-layer markers).

The uncertainties associated with quantifying each of the storms and amount carried to the sea are several. Horizontal extension of the windstorms and their duration is

BGD

11, 5941–5967, 2014

## Iron rich dust from Iceland

O. Arnalds et al.

Title Page

Abstract

Introduction

Conclusions

References

Tables

Figures

◀

▶

◀

▶

Back

Close

Full Screen / Esc

Printer-friendly Version

Interactive Discussion



**Iron rich dust from  
Iceland**

O. Arnalds et al.

[Title Page](#)[Abstract](#)[Introduction](#)[Conclusions](#)[References](#)[Tables](#)[Figures](#)[◀](#)[▶](#)[◀](#)[▶](#)[Back](#)[Close](#)[Full Screen / Esc](#)[Printer-friendly Version](#)[Interactive Discussion](#)

5 estimated to be of the order of 10–20%, while the uncertainty of the concentration estimated from horizontal visibility as well as the vertical extension of the dust plumes is estimated to be 30–50%. The uncertainty of the concentration is twofold. Primarily, it is related to uncertainty in the manual estimation of the visibility and how well it represents the entire dust plume. Secondly, observations that may deviate from the present cases in terms of particle size distribution and optical properties which are not known and presumably variable to some extent, even from case to case in Iceland. Furthermore, the uncertainty in the estimate of how much of emitted materials reach the sea is unknown. Yet, the relatively similar quantities derived for the total emissions and sea emissions compared to values obtained from the deposition maps show that these estimates are adequate as first approximations.

10 The dust emissions in Iceland presented here (31–40 million t) are of the order of 0.6–7.2% of the total estimate for global dust emissions of 500 to 5000 million tons given in a review by Engelstaedter et al. (2006). They noted that North Africa is by far the largest source of dust with 170–1600 million t, but our numbers are 1.9–21% of these estimates of North African dust.

15 The total oceanic deposition from Iceland ranges between 5.5 and 14 million t annually, according our results. Engelstaedter et al. (2006) reviewed estimates of mean annual dust depositions to the oceans, which range between 314 and 910 million  $\text{tyr}^{-1}$  to the oceans globally but from 140 to 260 million  $\text{tyr}^{-1}$  to North Atlantic Ocean. The North Atlantic estimates are close to values reported in a review by Mahowald et al. (2005), suggesting that the North Atlantic receives about 200 million tons of dust annually, mostly from Africa. The Icelandic dust to oceans amounts to 2.8–7% of this quantity. The dust deposition per unit area west of the Sahara is considered to be about 20  $10\text{tkm}^{-2}\text{yr}^{-1}$  (Duce et al., 1991). The corresponding average number from the data presented here is 10.4–25.7  $\text{tkm}^{-2}\text{yr}^{-1}$  on average over 370 000  $\text{km}^2$  sea area, equal to or substantially greater than the rates reported by Duce et al. It is therefore evident that Icelandic dust sources rate among the globally most active sources, and contributing a sizeable share of atmospheric dust to the North Atlantic Ocean, and most likely

the majority of dust deposits to the northern part of the North Atlantic Ocean and the Atlantic part of the Arctic Ocean (Greenland and Norwegian Seas).

## 5.2 Oceanic iron deposition with dust

Jickells et al. (2005) indicated that atmospheric sources of iron were of the order of 16 million tons Fe per year. The Icelandic aeolian sediments are exceptionally iron rich, which explain high values of deposited iron to Icelandic water. Iron deposition to oceans from Icelandic sources is of the order 0.56–1.39 million t (Table 4), which is a sizeable proportion of the estimate of the global total (3.5–8.7%). However, Jickells et al. (2005) report fluvial (625–962 million t) and glacial sediments (34–211 million t) as much larger sources for flux of iron to the oceans, but their spread is naturally considerably more limited, closer to the outlets.

There is evidence that the oceans south of Iceland are Fe limited during and after peak bloom, and the Irminger Basin waters have been identified as an area of low dissolved Fe (Nielsdóttir et al., 2009; Ryan-Keogh et al., 2013). Achterberg et al. (2013) found elevated Fe levels in surface waters south of Iceland during the 2010 Eyjafjalajökull eruption, indicating that volcanic activity can raise the oceanic Fe numbers. They, however, pointed out that the potential positive effect of such nutrient pulses as provided by eruptions are depended on other conditions such as nitrogen availability, and the effects are potentially short-lived. We do, however, concur with Prospero et al. (2012) that the numerous periodic dust plumes over the Icelandic waters can have a prolonged effect on Fe availability south of Iceland, and also in other Icelandic waters. Furthermore, many of the dust-storm events occur in spring in South Iceland (March–May), which further enhances possible positive growth effects during early summer.

Only part of the iron in the ash becomes available. Iron solubility has generally been calculated as 1–5% (see Mahowald et al., 2005), but Buck et al. (2010) reported  $9 \pm 5\%$  sea water solubility for iron in aerosol over oceans. How much of this iron becomes bioavailable is uncertain (Jickells et al., 2005). A range of Fe bioavailability has been reported in the literature (e.g., Ayrís and Delmelle, 2012b) with 0.004–0.04% bioavail-

BGD

11, 5941–5967, 2014

## Iron rich dust from Iceland

O. Arnalds et al.

Title Page

Abstract

Introduction

Conclusions

References

Tables

Figures

◀

▶

◀

▶

Back

Close

Full Screen / Esc

Printer-friendly Version

Interactive Discussion



ability reported by Olgun et al. (2011; see also Ayrís and Delmelle, 2012a). Achterberg et al. (2013) studying the 2010 Eyjafjallajökull deposition indicated that only 0.02 % of the Fe would become bioavailable. We made an effort of quantifying bioavailable iron based on 0.02 % bioavailability, which is presented in the last column in Table 4, which shows that bioavailable Fe from dust sources are of the order 0.04 to > 10 mg m<sup>-2</sup> yr<sup>-1</sup>. It should, however, be noted that Jones and Gíslason (2008) showed that 7 year Hekla ash (from the 2000 eruption) released substantially less iron than the freshly deposited ash.

The continuous river and aeolian distribution to the oceanic waters have more stable effects on the nutrient contents of the surface waters than volcanic pulses. Icelandic rivers bring annually about 60–70 million tons of sediments to the ocean on average (research reviewed by Gíslason, 2008) compared to 5.6–14 million tons deposited by aeolian processes. In addition to this mean annual flow, large scale floods in relation to volcanic activity and draining of sub-glacial lakes create temporary pulses of sediment release to the oceans from Iceland (and also often dust pulses). The high river inputs will result in high concentrations near the river outlets, dwarfing the aeolian inputs. However, the river fed sediments are not as widespread as the aeolian deposition. Furthermore, dust far from the sources is relatively fine-grained material, more reactive than the coarser glacio-fluvial sediments, and is more likely to affect nutrient contents, such as Fe, in much of the oceanic waters around Iceland. Iron solubility has been suggested to be higher in areas remote from desert plumes (Baker et al., 2005). However, the effect of particle size, hence the small grains distributed over the oceans, is poorly understood (Ayrís and Delmelle, 2012b). There are published experiments on the solubility of iron from fresh volcanic ash, less is known about the iron solubility in volcanic materials redistributed by aeolian processes, but it is likely to be less than for the fresh volcanic ash, as the readily soluble salts adsorbed onto the fresh ash particles have been washed away (e.g., Duggen et al., 2010).

**BGD**

11, 5941–5967, 2014

## Iron rich dust from Iceland

O. Arnalds et al.

[Title Page](#)

[Abstract](#)

[Introduction](#)

[Conclusions](#)

[References](#)

[Tables](#)

[Figures](#)

[I◀](#)

[▶I](#)

[◀](#)

[▶](#)

[Back](#)

[Close](#)

[Full Screen / Esc](#)

[Printer-friendly Version](#)

[Interactive Discussion](#)



## 6 Implications and conclusions

We present the first available estimates of total dust emissions from Icelandic dust sources, which are obtained using two independent methods, and yielding 30 to 40 million tons of dust annually. These figures are significant in relation to global emissions and are likely to have widespread effects on atmospheric conditions in the North Atlantic Ocean and in the Arctic. This dust needs to be considered in climate models for the area, and is likely to have impact on albedos of snow, sea ice, and glaciers, thus enhancing snow melt in Iceland and possibly Greenland and Svalbard.

Our research also presents the first estimate of oceanic dust deposition of volcanic materials from Iceland. The amount is in the range of 5.5–13.8 million tons annually, which is a substantial proportion of the dust deposited to the North Atlantic Ocean and the Arctic, and large contribution of materials to the ocean surface at northerly latitudes (e.g., > 55° N). The 5.5–13.8 million t of materials deposited as dust is an addition to the 60–70 million tons that are fluvial (Gíslason, 2008), but the aeolian materials are distributed more evenly and over larger areas than the fluvial sediments. This large amount and distribution shown in Fig. 4 can be used for improving ocean nutrition models for the ocean waters around Iceland.

The iron content of volcanic dust materials deposited from the Icelandic dust sources is high (10%). Therefore, the dust is expected to release relatively high concentrations of bioavailable iron. This iron release can potentially have marked influence on the primary productivity in oceans around Iceland and needs to be considered for nutrient budgets for the area. Even though the numbers are substantially lower than fluvial deposition of suspended materials from Iceland, the extensive spread is potentially just as an important factor. Considering the importance for ocean productivity and fisheries, we suggest that the effect on Icelandic dust plumes on the primary production should be investigated in greater detail.

Icelandic glaciers are currently retreating due to climate change (Björnsson and Pálsón, 2008). Dust emissions are likely to increase over the next decades with retreating

**BGD**

11, 5941–5967, 2014

### Iron rich dust from Iceland

O. Arnalds et al.

Title Page

Abstract

Introduction

Conclusions

References

Tables

Figures

◀

▶

◀

▶

Back

Close

Full Screen / Esc

Printer-friendly Version

Interactive Discussion



glaciers as some of the major dust source areas (mainly Dyngjúsandur, Maelifellssandur and Myrdalssandur, see Fig. 1) leave behind larger floodplains subjected to intense aeolian redistribution of fine sediments. It is important to increase understanding of the aeolian nature of these major dust source areas, including loading, erosion processes, deflation, dust generation and other factors.

The amount of dust emissions calculated from the deposition map presented here includes periodic pulses from volcanic eruptions, which may result in lower emissions during average years (without eruptions), which can in part explain the difference between calculated deposition from frequency and emissions of storms compared to estimates from deposition on land. Our results provide a best estimate in a subject area where data of this nature did not exist previously, but is needed for improved understanding of oceanic biochemical cycles, productivity and atmospheric conditions.

## References

- Achterberg, E. P., Moore, C. M., Henson, S. A., Steigenberger, S., Stohl, A., Eckhardt, S., Avendano, L. C., Cassidy, M., Hembury, D., Klar, J. K., Lucas, M. I., Macey, A. I., Marsay, C. M., and Ryan-Keogh, T. J.: Natural iron fertilization by the Eyjafjallajökull volcanic eruption, *Geophys. Res. Lett.*, 40, 921–926, 2013.
- Arnalds, O.: Soils of Iceland, *Jökull*, 58, 409–421, 2008.
- Arnalds, O.: Dust sources and deposition of aeolian materials in Iceland, *Icel. Agric. Sci.*, 23, 3–21, 2010.
- Arnalds, O.: The influence of volcanic tephra (ash) on ecosystems, *Adv. Agron.*, 121, 331–380, 2013.
- Arnalds, O. and Metúsalemsson, S.: Dust emissions from South Iceland 5 October 2004, *Nátúrfrædingurinn*, 72, 90–92, 2004 (in Icelandic).
- Arnalds, O., Thorarinsdóttir, E. F., Thorsson, J., Dagson-Waldhauserova, P., and Agustsdóttir, A. M.: An extreme wind erosion event of the fresh Eyjafjallajökull 2010 volcanic ash, *Nature Sci. Rep.*, 3, 1257, doi:10.1038/srep01257, 2013.
- Ayris, P. M. and Delmelle, P.: The immediate environmental effects of tephra emission, *B. Volcanol.*, 74, 1905–1936, 2012a.

## Iron rich dust from Iceland

O. Arnalds et al.

Title Page

Abstract

Introduction

Conclusions

References

Tables

Figures

◀

▶

◀

▶

Back

Close

Full Screen / Esc

Printer-friendly Version

Interactive Discussion



## Iron rich dust from Iceland

O. Arnalds et al.

Title Page

Abstract

Introduction

Conclusions

References

Tables

Figures

◀

▶

◀

▶

Back

Close

Full Screen / Esc

Printer-friendly Version

Interactive Discussion



- Ayris, P. and Delmelle, P.: Volcanic and atmospheric controls on ash iron solubility: a review, *Phys. Chem. Earth*, 45–46, 103–112, 2012b.
- Baker, A. R., Jickells, T. D., Witt, M., and Linge, K. L.: Trends in the solubility of iron, aluminium, manganese and phosphorus in aerosol collected over the Atlantic Ocean, *Mar. Chem.*, 98, 43–58, 2005.
- Baratoux, D., Mangold, N., Arnalds, O., Bardintzeff, J.-M., Platevoet, B., Grégorie, M., Pinet, P.: Volcanic sands of Iceland – Diverse origins of aeolian sand deposits revealed at Dyngjusanur and Lambahraun, *Earth Surf. Proc. Land.*, 36, 1789–1808, 2011.
- Björnsson, H. and Jonsson, T.: Climate and climatic variability at Lake Mývatn, *Aquat. Ecol.*, 38, 129–144, 2003.
- Björnsson, H. and Pálsson, F.: Icelandic glaciers, *Jökull*, 58, 365–386, 2008.
- Blechschmidt, A.-M., Kristjansson, J. E., Olafsson, H., Burkhart, J. F., and Hodnebrog, Ø.: Aircraft-based observations and high-resolution simulations of an Icelandic dust storm, *Atmos. Chem. Phys. Disc.*, 12, 7949–7984, 2012.
- Buck, C. F., Landing, W. M., Resing, J. A., and Measures, C. I.: The solubility and deposition of aerosol Fe and other trace elements in the North Atlantic Ocean: observations from the A16N CLIVAR/CO2 repeat hydrography section, *Mar. Chem.*, 120, 57–70, 2010.
- Bullard, J. E.: Contemporary glacial inputs to the dust cycle, *Earth Surf. Proc. Land.*, 38, 71–89, 2013.
- Cuxart, J., Bougeault, P., and Redelsperger, J. L.: A turbulence scheme allowing for mesoscale and large-eddy simulations, *Q. J. Roy. Meteor. Soc.*, 126, 1–30, 2000.
- D’Almeida, G. A.: A model for Saharan dust transport, *J. Clim. Appl. Meteorol.*, 25, 903–916, 1986.
- Dagsson-Waldhauserova, P., Arnalds, O., and Olafsson, H.: Long-term frequency and characteristics of dust storm events in Northeast Iceland (1949–2011), *Atmos. Environ.*, 77, 117–127, 2013a.
- Dagsson-Waldhauserova, P., Arnalds, O., and Olafsson, H.: Long term dust aerosol production from natural sources in Iceland, *J. Air Waste Manage. Assoc.*, doi:10.1080/10962247.2013.805703, 2013b.
- Dagsson-Waldhauserova, P., Arnalds, O., and Olafsson, H.: Long-term variability of dust-storms in Iceland, *Geophys. Res. Abstr.*, 15, EGU2013-11578-1, 2013c.
- Duce, R. A., Liss, P. S., and Merrill, J. T.: The atmospheric input of trace species into the World Ocean, *Global Biochem. Cy.*, 5, 193–259, 1991.



## Iron rich dust from Iceland

O. Arnalds et al.

[Title Page](#)

[Abstract](#)

[Introduction](#)

[Conclusions](#)

[References](#)

[Tables](#)

[Figures](#)

[◀](#)

[▶](#)

[◀](#)

[▶](#)

[Back](#)

[Close](#)

[Full Screen / Esc](#)

[Printer-friendly Version](#)

[Interactive Discussion](#)



- Duggen, S., Olgun, N., Croot, P., Hoffmann, L., Dietze, H., Delmelle, P., and Teschner, C.: The role of airborne volcanic ash for the surface ocean biogeochemical iron-cycle: a review, *Biogeosciences*, 7, 827–844, doi:10.5194/bg-7-827-2010, 2010.
- Ekström, M., McTainsh, G. H., and Chappell, A.: Australian dust storms: temporal trends and relationships with synoptic pressure distributions (1960–99), *Int. J. Climatol.*, 24, 1581–1599, 2004.
- Engelstaeter, S., Tegen, I., and Washington, R.: North African dust emissions and transport, *Earth-Sci. Rev.*, 79, 73–100, 2006.
- Fields, J. P., Belnap, J., Breshears, D. D., Neff, J. C., Okin, G. S., Whicker, J. J., Painter, T. H., Ravi, S., Reheis, M. C., and Reynolds, R. L.: The ecology of dust, *Front. Ecol. Envir.*, 8, 423–430, 2010.
- Gillies, J. A., Nickling, W. G., and Tilson, M.: Frequency, magnitude and characteristics of aeolian sediment transport: McMurdo Dry Valleys, Antarctica, *J. Geophys. Res.-Ea. Surf.*, doi:10.1029/2012JF002473, 2013.
- Gislason, S. R.: Weathering rates in Iceland, *Jökull*, 58, 387–408, 2008.
- Gunnarsson, T. G., Arnalds, O., Appleton, G., and Gill, J. A.: Ecosystem recharge by volcanic dust drives large-scale variation in bird abundance, *Global Ecol. Biogeogr.*, submitted, 2014.
- Jamalizadeh, M. R., Moghaddamia, A., Piri, J., Arbabi, V., Homayounifar, M., and Shahryari, A.: Dust storm prediction using ANNs technique (a case study: Zabol City), *Proc. Wrl. Acad. Sci. E.*, 33, 529–537, 2008.
- Jakobsson, S. P., Jónasson, K., and Sigurdsson, I. A.: The three igneous rock series of Iceland, *Jökull* 58, 117–138, 2008.
- Jickells, T. D., An, Z. S., Andersen, K. K., Baker, A. R., Berametti, G., Brooks, N., Cao, J. J., Boyd, P. W., Duce, R. A., Hunter, K. A., Kawahata, H., Kubilay, N., LaRoche, J., Liss, P. S., Mahowald, N., Prospero, J. M., Didgwell, A. J., Tegen, I., and Torres, R.: Global iron connections between desert dust, ocean biogeochemistry, and climate, *Science*, 308, 67–71, 2005.
- Jones, M. T. and Gislason, S. R.: Rapid releases of metal salts and nutrients following the deposition of volcanic ash into aqueous environments, *Geochim. Cosmochim. Ac.*, 72, 3661–3680, 2008.
- Lawrence, C. R. and Neff, J. C.: The contemporary physical and chemical flux of aeolian dust: a synthesis of direct measurements of dust deposition, *Chem. Geol.*, 267, 46–63, 2009.

Iron rich dust from  
Iceland

O. Arnalds et al.

Title Page

Abstract

Introduction

Conclusions

References

Tables

Figures

◀

▶

◀

▶

Back

Close

Full Screen / Esc

Printer-friendly Version

Interactive Discussion



Leadbetter, S. J., Hort, M. C., von Löwis, S., Weber, K., Witham, C. S.: Modeling the resuspension of ash deposited during the eruption of Eyjafjallajökull in spring 2010, *J. Geophys. Res.*, 117, D00U10, doi:10.1029/2011JD016802, 2012.

Leys, J. F., Heidenreich, S. K., Strong, C. L., McTainsh, G. H., and Quigley, S.: PM<sub>10</sub> concentrations and mass transport during “Red Dawn” – Sydney 23 September 2009, *Aeol. Res.* 3, 227–342, 2011.

Mahowald, N. M., Baker, A. R., Bergametti, G., Brooks, N., Duce, R. A., Jickells, T. D., Kubilay, N., Prospero, J. M., and Tegen, I.: Atmospheric global dust cycle and iron inputs to the ocean, *Global Biogeochem. Cy.*, 19, GB4025, doi:10.1029/2004GB002402, 2005.

Magnússon, S. H.: Heavy metals and sulfur in mosses in Iceland 1990–2010: impact of industry (*Pungmálmar og brennisteinn í mosa á Íslandi 1990–2010: áhrif iðjuvera*), Icelandic Institute of Natural History Report NÍ-13003, Reykjavik, Iceland, 2013 (in Icelandic).

Misumi, K., Lindsay, K., Moore, J. K., Doney, S. C., Bryan, F. O., Tsumune, D., and Yoshida, Y.: The iron budget in ocean surface waters in the 20th and 21st centuries: projections by the Community Earth System Model version 1, *Biogeosciences*, 11, 33–55, doi:10.5194/bg-11-33-2014, 2014.

Muhs, D. R., Budahn, J. R., McGeehin, J. P., Bettis III, A. E., Skipp, G., Paces, J. B., and Wheeler, E. A.: Loess origin, transport, and deposition over the past 10 000 years, Wrangell-St. Elias National Park, Alaska, *Aeol. Res.*, 11, 85–99, 2013.

Natsagdorj, L., Jugder, D., and Chung, Y. S.: Analysis of dust storms observed in Mongolia during 1937–1999, *Atmos. Environ.*, 37, 1401–1411, 2003.

Nielsdóttir, M. C., Moore, C. M., Sanders, R., Hinz, D. J., and Achterberg, E. P.: Iron limitation of the postbloom phytoplankton communities in the Iceland Basin, *Global Biogeochem. Cy.*, 23, GB3001, doi:10.1029/2008GB003410, 2009.

Óladóttir, B. A., Sigmarsson, O., Larsen, G., Thordarson, T.: Katla volcano, Iceland: magma composition, dynamics and eruption frequency as recorded by Holocene tephra layers, *B. Volcanol.*, 70, 475–493, 2008.

Óladóttir, B. A., Sigmarsson, O., Larsen, G., Devidal, J.-L.: Provenance of basaltic tephra from Vatnajökull subglacial volcanoes, Iceland as determined by major- and trace-element analyses, *Holocene*, 21, 1037–1048, 2011.

Olgun, N., Duggen, S., Croot, P. L., Delmelle, P., Dietze, H., Schacht, U., Óskarsson, N., Siebe, C., Auer, A., and Grabe-Schönberg, D.: Surface ocean iron fertilization: the role of airborne volcanic ash from subduction zone and hot spot volcanoes and related iron fluxes

into the Pacific Ocean, *Global Biogeochem. Cy.*, 25, GB4001, doi:10.1029/2009GB003761, 2011.

Prospero, J. M., Bullard, J. E., and Hodgkins, R.: High-latitude dust over the North Atlantic: inputs from Icelandic proglacial dust storms, *Science*, 335, 1078–1082, 2012.

5 Ryan-Keogh, T. J., Macey, A. I., Nielsdottir, M. C., Lucas, M. I., Steigenberger, S. S., Stinchcombe, M. C., Atherberg, E. P., Bibby, T. S., and Moore, C. M.: Spatial and temporal development of phytoplankton iron stress in relation to dynamics in the high-latitude North Atlantic Ocean, *Limnol. Oceanogr.*, 58, 533–545, 2013.

10 Schulz, M., Prospero, J. M., Baker, A. R., Dentener, F., Ickes, L., Liss, P. S., Mahowald, N. M., Nickovic, S., García-Pando, C. P., Rodríguez, S., Sarin, M., Tegen, I., and Duce, R. A.: Atmospheric transport and deposition of mineral dust to the ocean: implications for research needs, *Environ. Sci. Technol.*, 56, 10390–10404, 2012.

Seity, Y., Brousseau, P., Malardel, S., Hello, G., Bénard, P., Bouttier, F., Lac, C., and Masson, V.: The AROME-France convective-scale operational model, *Mon. Wea. Rev.*, 139, 976–991, 2011.

15 Singer, A., Zobeck, T., Poberzsky, L., and Argaman, E.: The PM<sub>20</sub> and PM<sub>2.5</sub> dust generation of soils/sediments in the Southern Aral Sea Basin, Uzbekistan, *J. Arid Environ.*, 54, 705–728, 2003.

Sweeney, M. R., McDonald, E. V., and Etyemezian, V.: Quantifying dust emissions from desert landforms, eastern Mojave Desert, USA, *Geomorphology*, 135, 21–34, 2011.

20 Thordarson, T. and Höskuldsson, Á.: Postglacial volcanism in Iceland, *Jökull*, 58, 197–228, 2008.

Thorsteinsson, T., Jóhannsson, T., Stohl, A., and Kristiansen, N. I.: High levels of particulate matter in Iceland due to direct ash emissions by the Eyjafjallajökull eruption and resuspension of deposited ash, *J. Geophys. Res.*, 117, B00C05, doi:10.1029/2011JB008756, 2012.

25 Wang, Y. Q., Zhang, X. Y., Gong, S. L., Zhou, C. H., Hu, X. Q., Liu, H. L., Niu, T., and Yang, Y. Q.: Surface observation of sand and dust storm in East Asia and its application in CUACE/Dust, *Atmos. Chem. Phys.*, 8, 545–553, doi:10.5194/acp-8-545-2008, 2008.

## Iron rich dust from Iceland

O. Arnalds et al.

Title Page

Abstract

Introduction

Conclusions

References

Tables

Figures

◀

▶

◀

▶

Back

Close

Full Screen / Esc

Printer-friendly Version

Interactive Discussion



## Iron rich dust from Iceland

O. Arnalds et al.

[Title Page](#)[Abstract](#)[Introduction](#)[Conclusions](#)[References](#)[Tables](#)[Figures](#)[◀](#)[▶](#)[◀](#)[▶](#)[Back](#)[Close](#)[Full Screen / Esc](#)[Printer-friendly Version](#)[Interactive Discussion](#)

**Table 1.** Calculation of four storms based on visibility determined at weather stations and wind data for each storm, using equations converting visibility into  $PM_{10}$  concentrations by D’Almeida (1986) and Wang et al. (2008) (factor –1.418); see also Dagsson-Waldhauserova et al. (2013). Total emissions calculated by formula given by Leys et al. (2011) and the deposition curve presented in Fig. 4, which reflects drop in concentration. All storms occurred at the Dyngjusandur dust source in NE Iceland. The column “Distance from source” indicates the location of the calculated window through which materials in the last column are transported. “Emissions through window” means how much material is transported through the window (e.g., to sea).

Storm	Size	Distance from source km	Total emissions from source thousand tons	Emissions through window
23 Sep 2008	Medium-large	90	384	160
24 Sep 2011	Medium	90	255	110
25 May 2012	Medium-large	90	365	150
9 Aug 2012	Medium	155	215	75

## BGD

11, 5941–5967, 2014

Iron rich dust from  
Iceland

O. Arnalds et al.

[Title Page](#)[Abstract](#)[Introduction](#)[Conclusions](#)[References](#)[Tables](#)[Figures](#)[Back](#)[Close](#)[Full Screen / Esc](#)[Printer-friendly Version](#)[Interactive Discussion](#)

**Table 2.** Annual number of dust-day events in South, North and all Iceland to the left. The dust events are split in three intensity classes each with calculated average emissions to give total emissions for each North and South Iceland. The results are shown as total emissions (land and sea) and emissions over sea (northeast and south of Iceland and total emissions to the sea, last three columns).

Intensity	Dust events in NE Iceland per year	Dust events in S Iceland per year	Total dust events in Iceland per year	Average emissions per event	Total deposition, land and ocean	Emissions to oceans NE (10% of total)	Emissions to oceans S (50% of total)	Total emissions to oceans
						million tons		
Major	1.5	6.3	7.8	1	7.8	0.150	3.150	3.300
Medium	7.8	42.5	50.3	0.3	15.1	0.234	1.275	1.509
Minor	25.3	52.2	75.6	0.1	7.6	0.253	0.522	0.775
<b>Total</b>	<b>34.6</b>	<b>101</b>	<b>135.6</b>		<b>30.5</b>	<b>0.637</b>	<b>4.917</b>	<b>5.554</b>

Iron rich dust from  
Iceland

O. Arnalds et al.

Title Page

Abstract

Introduction

Conclusions

References

Tables

Figures

◀

▶

◀

▶

Back

Close

Full Screen / Esc

Printer-friendly Version

Interactive Discussion



**Table 3.** Deposition on land and sea based on a map of deposition on land (Arnalds 2010) and extension of the data to oceanic areas around Iceland.

Category	Average	Areal extent		Deposition		
	Deposition	Land	Ocean	Land	Ocean	Total
	t km <sup>-2</sup>	km <sup>2</sup>		million tons		
1	5	10 085	173 637	0.05	0.89	0.92
2	20	8,370	109 845	0.17	2.20	2.36
3	44	17 367	48 761	0.76	2.15	2.90
4	119	11 699	22 594	1.39	2.69	4.08
5	350	16 680	12 188	5.84	4.27	10.10
6	500	27 297	3244	13.65	1.60	15.27
Glaciers	400	11 185		4.47		4.47
<b>Total</b>		<b>102 683</b>	<b>370 269</b>	<b>26.33</b>	<b>13.79</b>	<b>40.11</b>

## Iron rich dust from Iceland

O. Arnalds et al.

**Table 4.** Range in annual dust deposition over sea area from Iceland, total and per unit area, iron deposition and a calculation of bioavailable iron from Icelandic dust (0.02 % of total Fe, Achterbert et al., 2013). Range in dust deposition found by (i) frequency determination and dust load calculation (lower values), and (ii) map-based deposition numbers (higher values).

	Deposition per year	Sea area	Total dust	Fe	Total Fe on sea	Bioavailable Fe <sup>s</sup>
Deps. categ.	tkm <sup>-2</sup> or gm <sup>-2</sup>	km <sup>2</sup>	million tyr <sup>-1</sup>	gm <sup>-2</sup> yr <sup>-1</sup>	thousand tyr <sup>-1</sup>	mgm <sup>-2</sup> yr <sup>-1</sup>
1	2–5	173 637	0.35–0.86	0.2–0.5	35–87	0.04–0.1
2	8–20	109 845	0.89–2.2	0.8–2	89–220	0.16–0.4
3	17–44	48 761	0.88–2.1	1.7–4.4	87–215	0.36–0.88
4	48–119	22 594	1.1–2.7	4.8–11.9	109–269	0.97–2.38
5	142–350	12 188	1.7–4.3	14.2–35.0	173–427	2.8–7
6	203–500	3244	0.7–1.6	20.3–50.0	66–162	4.1–10
<b>Total</b>		<b>370 269</b>	<b>5.6–13.8</b>		<b>560–1390</b>	

Title Page

Abstract

Introduction

Conclusions

References

Tables

Figures

◀

▶

◀

▶

Back

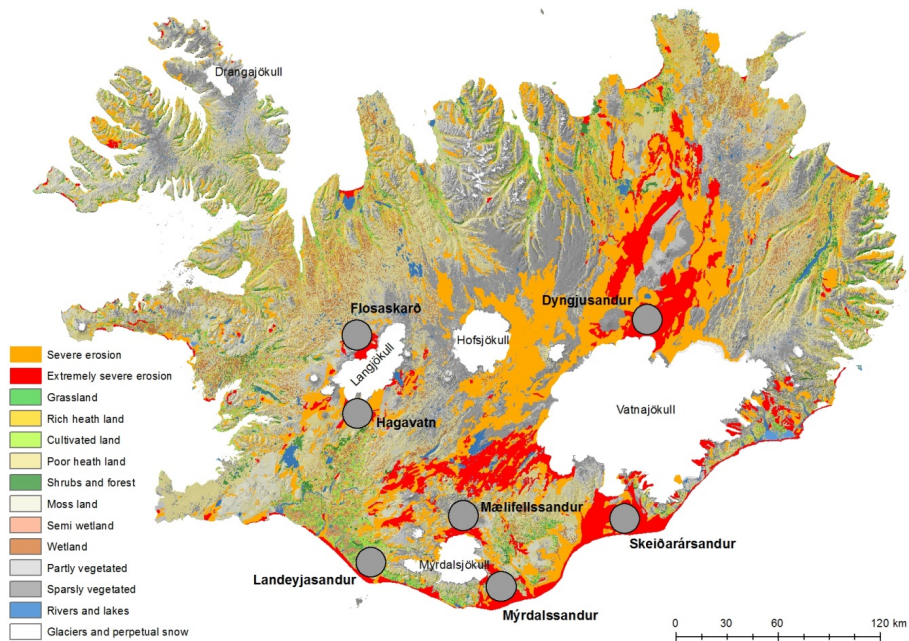
Close

Full Screen / Esc

Printer-friendly Version

Interactive Discussion





**Fig. 1.** Location of major plume areas in Iceland shown as circles. Sandy areas with unstable surfaces shown as red (very unstable) and orange (unstable), but glaciers are white. The map is based on the Agricultural University of Iceland land cover database.

Iron rich dust from Iceland

O. Arnalds et al.

Title Page

Abstract Introduction

Conclusions References

Tables Figures

◀ ▶

◀ ▶

Back Close

Full Screen / Esc

Printer-friendly Version

Interactive Discussion







**Fig. 2.** Typical plume area in Iceland: Maelifellssandur, north of Myrdalsjökull. The photo shows approximately 3 km of the glacial front but the plume area is  $> 25 \text{ km}^2$ . The sand-fields are flooded during warm summer days, charging the surface with silty materials (lighter colored areas, deposited from higher water flow the previous day or days). Some of the channels dry out as the water percolates into the surface, with the sediment loads being left on the surface. The more coarse materials are left on the ground after wind erosion events (saltation, the darker materials). The water channels change frequently. Dust storms are extremely common within this area during summer (often daily), but less frequent during winter when this highland area is usually covered with snow. Photo July 2012 (OA).

## BGD

11, 5941–5967, 2014

### Iron rich dust from Iceland

O. Arnalds et al.

Title Page

Abstract

Introduction

Conclusions

References

Tables

Figures

◀

▶

◀

▶

Back

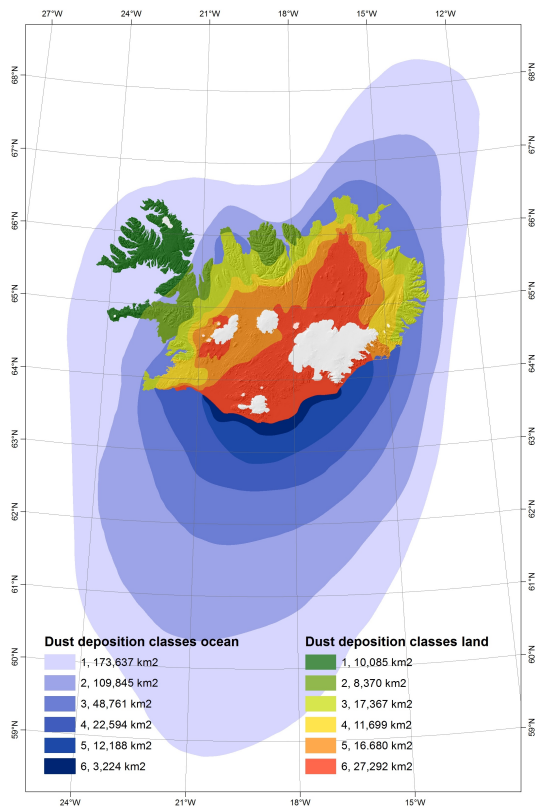
Close

Full Screen / Esc

Printer-friendly Version

Interactive Discussion





**Fig. 3.** Average distribution of aeolian sediments and volcanic ash around Iceland. Deposition is split in six categories (see map legend), and is an extension of previously published map for terrestrial Iceland (Arnalds, 2010). Extension to sea is partly based on satellite images showing dust-storm events. Main extension is to the south from the southern Iceland dust plume areas, and to the northeast, mainly from the Dyngjúsandur dust plume source.

Title Page

Abstract

Introduction

Conclusions

References

Tables

Figures

◀

▶

◀

▶

Back

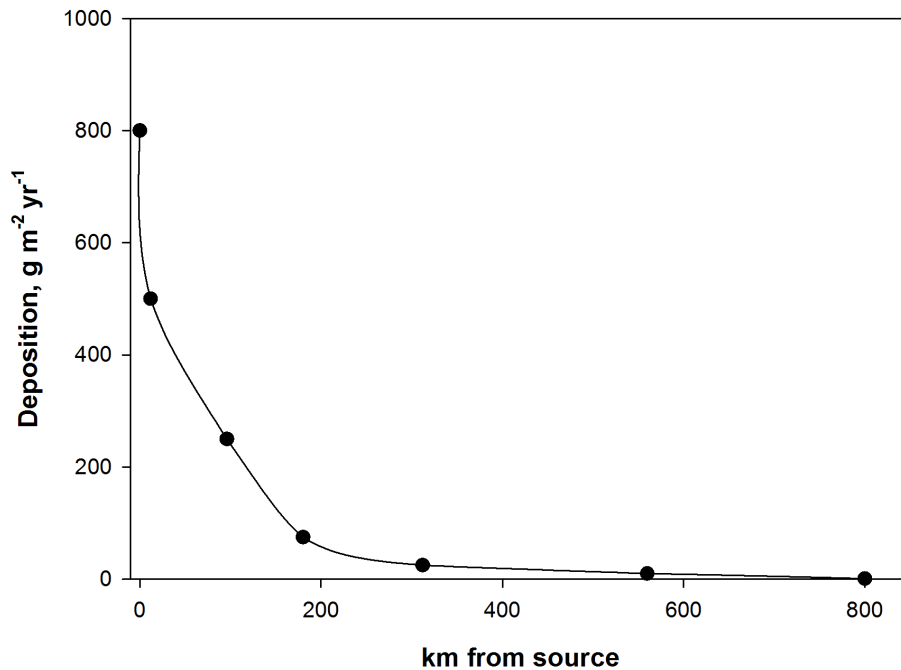
Close

Full Screen / Esc

Printer-friendly Version

Interactive Discussion





**Fig. 4.** The logarithmic drop in sedimentation with distance from the sediment source. Transect south from the dust sources at the southern tip of Iceland. The transect from Dyngjusandur in NE Iceland has x-axis scale approximately divided by 2.

## BGD

11, 5941–5967, 2014

### Iron rich dust from Iceland

O. Arnalds et al.

Title Page

Abstract

Introduction

Conclusions

References

Tables

Figures

◀

▶

◀

▶

Back

Close

Full Screen / Esc

Printer-friendly Version

Interactive Discussion

