

# **N<sub>2</sub>O, NO, N<sub>2</sub>, and CO<sub>2</sub> emissions from tropical savanna and grassland of Northern Australia: an incubation experiment with intact soil cores**

**C. Werner<sup>1,2</sup>, K. Reiser<sup>2</sup>, M. Dannenmann<sup>2</sup>, L. B. Hutley<sup>3</sup>, J. Jacobeit<sup>4</sup>, and K. Butterbach-Bahl<sup>2</sup>**

<sup>1</sup>Biodiversity and Climate Research Centre (BiK-F), Senckenberg Gesellschaft für Naturforschung, Senckenberganlage 25, 60325 Frankfurt, Germany

<sup>2</sup>Institute for Meteorology and Climate Research, Institute for Atmospheric Environmental Research (IMK-IFU), Karlsruhe Institute of Technology, Kreuzackbahnstrasse 19, 82467 Garmisch-Partenkirchen, Germany

<sup>3</sup>School of Environmental and Life Sciences, School of Environmental Research, Charles Darwin University, NT 0909, Australia

<sup>4</sup>Chair of Physical Geography and Quantitative Methods, University of Augsburg, Universitätsstraße 10, 86135, Germany

Correspondence to: C. Werner (christian.werner@senckenberg.de)

## Abstract

Strong seasonal variability of hygric and thermal soil conditions are a defining environmental feature in Northern Australia. However, how such changes affect the soil–atmosphere exchange of nitrous oxide (N<sub>2</sub>O), nitric oxide (NO) and dinitrogen (N<sub>2</sub>) is still not well explored. By incubating intact soil cores from four sites (3 savanna, 1 pasture) under controlled soil temperatures (ST) and soil moisture (SM) we investigated the release of the trace gas fluxes of N<sub>2</sub>O, NO and carbon dioxide (CO<sub>2</sub>). Furthermore, the release of N<sub>2</sub> due to denitrification was measured using the helium gas flow soil core technique. Under dry pre-incubation conditions NO and N<sub>2</sub>O emission were very low ( $< 7.0 \pm 5.0 \mu\text{g NO-N m}^{-2} \text{ h}^{-1}$ ;  $< 0.0 \pm 1.4 \mu\text{g N}_2\text{O-N m}^{-2} \text{ h}^{-1}$ ) or in case of N<sub>2</sub>O, even a net soil uptake was observed. Substantial NO (max:  $306.5 \mu\text{g N m}^{-2} \text{ h}^{-1}$ ) and relatively small N<sub>2</sub>O pulse emissions (max:  $5.8 \pm 5.0 \mu\text{g N m}^{-2} \text{ h}^{-1}$ ) were recorded following soil wetting, but these pulses were short-lived, lasting only up to 3 days. The total atmospheric loss of nitrogen was generally dominated by N<sub>2</sub> emissions (82.4–99.3% of total N lost), although NO emissions contributed almost 43.2% to the total atmospheric nitrogen loss at 50% SM and 30 °C ST incubation settings (the contribution of N<sub>2</sub> at these soil conditions was only 53.2%). N<sub>2</sub>O emissions were systematically higher for 3 of 12 sample locations, which indicates substantial spatial variability at site level, but on average soils acted as weak N<sub>2</sub>O sources or even sinks. By using a conservative upscaling approach we estimate total annual emissions from savanna soils to average  $0.12 \text{ kg N ha}^{-1} \text{ yr}^{-1}$  (N<sub>2</sub>O),  $0.68 \text{ kg N ha}^{-1} \text{ yr}^{-1}$  (NO), and  $6.65 \text{ kg N ha}^{-1} \text{ yr}^{-1}$  (N<sub>2</sub>). The analysis of long-term soil moisture and soil temperature records makes it clear, that extreme soil saturation that can lead to high N<sub>2</sub>O and N<sub>2</sub> emissions only occur at few days during a year and thus have little impact on the the annual total. The potential contribution of nitrogen released due to pulse events to the total annual emissions was found to be of importance for NO emissions (contribution to total: 5–22%), but not for N<sub>2</sub>O emissions. Our results indicate that the total gaseous release of nitrogen from these soils is low and clearly dominated by loss as inert nitrogen. Effects of seasonally

varying soil temperature and moisture were detected, but low due to the small amounts of available nitrogen in the soils.

## 1 Introduction

Tropical savanna ecosystems are one of the most important biomes of the earth and cover approximately 27.6 million km<sup>2</sup> (Hutley and Setterfield, 2008) or 11.5% of the global surface (Scholes and Hall, 1996). However, it is often difficult to find concise and clear criteria to define the spatial extent of this biome, and thus scientists often use a wide range of aerial estimates leading to substantial uncertainties in calculating the total contribution of this biome to the global soil-atmosphere exchange of nitrogen (Davidson and Kinglerlee, 1997). On a continental scale these areas can be constrained much better. North Australian tropical savannas cover about 2 million km<sup>2</sup> (approximately 12% of the global extent of the biome) and are located north of 20° S in Western Australia, the northern part of the Northern Territory and northern Queensland (e.g., Lehmann et al., 2009; Williams et al., 2005). In addition to these natural and semi-natural landscapes farmers introduced improved pastures in Northern Australia since the 1880s to increase productivity and their area expanded by approximately 2500 km<sup>-2</sup> yr<sup>-1</sup> during the 1980s (Lonsdale, 1994).

Savanna systems experience pronounced intra-annual variability of rainfall (dry season conditions from 2 to 9 months) in addition to substantial inter-annual climatic fluctuations (Frost et al., 1986). In the tropical savanna zone of Australia the wet season is controlled by the Asian monsoon and occurs from October to March. Precipitation ranges from over 2000 mm yr<sup>-1</sup> at coastal areas to < 400 mm yr<sup>-1</sup> inland (e.g., Russell-Smith and Yates, 2007) and declines by approximately 1 mm yr<sup>-1</sup> per km inland (Cook and Heerdegen, 2001). In addition to strong hgric variability savanna are also shaped by high fire frequencies (~ 20% burnt annually, Dwyer et al., 2000). Tropical savanna of the coastal belt of Northern Australia was found to burn even more frequently than the global average (up to 35%, Russell-Smith et al., 2007).

Climatic conditions as well as fire activity control soil conditions and nutrient turn-over in tropical savanna ecosystems as they affect soil temperature, soil moisture levels and thus oxygen availability in the soil matrix and availability and structure of organic matter and inorganic nutrients. Biogenic N trace gases are produced in soils through the microbial processes of nitrification and denitrification (Conrad, 1996), two key processes of N cycling in terrestrial ecosystems. The mineralization of organic material leads to the formation of ammonium ( $\text{NH}_4^+$ ), which serves as a substrate for autotrophic and/or heterotrophic nitrification. Under aerobic conditions, autotrophic and/or heterotrophic nitrifying organisms oxidise  $\text{NH}_4^+$  via hydroxylamine ( $\text{NH}_2\text{OH}$ ) and nitrite ( $\text{NO}_2^-$ ) to nitrate ( $\text{NO}_3^-$ ). Anaerobic conditions in the soil or in micro-sites promote the denitrification process, using  $\text{NO}_3^-/\text{NO}_2^-$  as alternative electron acceptors. Depending on environmental conditions,  $\text{NO}_3^-$  is reduced stepwise via  $\text{NO}_2^-$ , nitric oxide (NO) and  $\text{N}_2\text{O}$  to inert nitrogen ( $\text{N}_2$ ).  $\text{N}_2\text{O}$  as well as NO emissions from soils depend on the rates of nitrification and denitrification and underlying environmental conditions. Both processes can occur simultaneously in the soil due to the heterogeneity of soils with regard to gas diffusion and metabolic activity, which can create anaerobic micro-sites even in well aerated soil (Granli and Bøckman, 1995). The primary controls of  $\text{N}_2\text{O}$  as well as NO production and emission are the availability of  $\text{NH}_4^+$  and  $\text{NO}_3^-$ , the content of decomposable organic substrate and the soil aeration status, whereas soil temperature and pH are secondary controls (Granli and Bøckman, 1995). The significant variability of environmental factors (soil, vegetation and hydrological properties) across space and time (e.g., Davidson, 1991; Pape and Butterbach-Bahl, 1999) has often been demonstrated to control the magnitude and variability of  $\text{N}_2\text{O}$  and NO emissions from soils. Soil water status mainly regulating soil aeration conditions was found to act as the main driver for  $\text{N}_2\text{O}$  emissions in most tropical soils (e.g., Butterbach-Bahl et al., 2004b; Davidson, 1991; Grover et al., 2012; Linn and Doran, 1984; Werner et al., 2007b), although, due to the complexity of interacting environmental controls, it is difficult to obtain relationships of predictive value (Andersson et al., 2003). As savanna regions are characterized by climates with distinct wet and dry seasons (see above), the biogeochemical processes and associated trace gas exchange can be expected to also exhibit strong seasonal patterns following the hygric regime (e.g.,

Andersson et al., 2003; Eamus and Prior, 2001) - a feature also reported for other tropical ecosystems (seasonal tropical rainforest ecosystems: Breuer et al., 2000; Butterbach-Bahl et al., 2004b; Werner et al., 2007b, 2006). Most datasets of N trace gas emissions from savanna soils show a substantial variation of N<sub>2</sub>O and NO emissions on a seasonal scale following the hygric conditions (e.g., Castaldi et al., 2004, 2006; Pinto et al., 2002), whereas on a site scale emissions are mostly controlled by the variability of soil properties (Castaldi et al., 2004, 2006). As fire is a characteristic forcing in all savanna ecosystems (Bond and Keeley, 2005), it also affects the nitrogen cycle in a direct (pyrodenitrification loss of nitrogen) and indirect (conversion of part of the organic N to mineral N, which is added to the soil surface) way.

While literature can be found investigating the soil–atmosphere exchange of NO, N<sub>2</sub>O and CO<sub>2</sub>, reliable information about the release of N<sub>2</sub> via microbial denitrification is unavailable for savanna systems and still scarce for other terrestrial ecosystems (Butterbach-Bahl et al., 2013; Dannenmann et al., 2011; Groffman et al., 2006). This is, in part, due to the reluctantly accepted, but nowadays well proven fact, that the previously widely used acetylene-inhibition technique fails to accurately quantify N<sub>2</sub> loss from soil (e.g., Felber et al., 2012).

The major problem in recording the loss of N<sub>2</sub>, the final product of the microbial transformation process “denitrification”, is its abundance in the atmosphere and thus, precise measurements of N<sub>2</sub> production of soil have to be carried out with great sophistication. High-quality measurements are commonly only available from laboratory measurements under controlled atmosphere using the gas-flow helium incubation method (Butterbach-Bahl et al., 2002) or by tracking the fate of <sup>15</sup>N-labelled substrate (e.g., Rolston et al., 1978). However, both methods are costly and time-consuming, and thus severely limiting the feasibility of large-scale replication experiments. As a consequence measurements of N<sub>2</sub> emissions from soils of terrestrial ecosystems remain scarce (Butterbach-Bahl et al., 2013). Nevertheless, reliable N<sub>2</sub> measurements are a valuable tool in understanding the nitrogen mass balances and biochemistry (Butterbach-Bahl et al., 2013).

In order to investigate gaseous emissions of C (CO<sub>2</sub>) and N (N<sub>2</sub>O, NO, N<sub>2</sub>) compounds from tropical savanna and grassland systems in Northern Australia, we extracted intact soil cores from various field sites and performed a range of incubation experiments under controlled thermal and hygric conditions.

5 For our study we hypothesize that NO and N<sub>2</sub>O gas fluxes from the investigated savanna systems are generally low (below 0.1 kg N ha<sup>-1</sup> yr<sup>-1</sup>), and that re-wetting events have a significant importance not only for NO but also for N<sub>2</sub>O fluxes at annual scale. Moreover, we hypothesized that N<sub>2</sub> fluxes should only occur at soil moisture levels greater 60 % water filled pore space (WFPS).

10 The scope of the study was thus (a) to assess the magnitude of trace gas release under a range of environmental conditions typical for tropical savanna systems of Northern Australia, (b) to deduce environmental regulators leading to the observed emissions, and (c) to contrast the findings from natural savanna soil cores to samples derived from an improved pasture site. We furthermore aim to describe the total annual gaseous loss of nitrogen for  
15 such soil and the role of short-lived pulse emissions.

## 2 Material and methods

### 2.1 Site description and soil core sampling

In this study we investigated two field sites approximately 30 km east of Darwin, Northern Territory, Australia, and extracted intact soil cores for our laboratory incubation experiments.  
20 The first site is located at 12°30' S, 131°05' E at 18–22 m a.s.l., Girraween. Vegetation was *Eucalyptus tetrodonta* and *Eucalyptus minanta* dominated open-forest savanna with a grass layer composed of Shorgum spp. and *Heteropogon contortus*. The second site was established on managed grassland at Beatrice Hill Farm, Middle Point, located at 12°36.5' S, 131°18' E, approximately 25 km south-east of the savanna site. The farm estate is a long-  
25 term state-owned research station, operated by the Department of Primary Industry and Fisheries, Northern Territory.

This part of the Australian north is characterized by a strong seasonality of precipitation, with a pronounced dry season ranging from May to September. The dry season is followed by a period of intense convective thunderstorms (“build-up”), which marks the start of the wet season (Cook and Heerdegen, 2001). The long-term annual mean of precipitation for the closest climate station Middle Point is 1411 mm (data: <http://www.bom.gov.au>, years 1981–2010; see Fig. 1 for a Walter & Lieth Climatic Diagram of this station). The dominant amount of annual precipitation (91 %) is received in the wet season, often as heavy afternoon thunderstorms. Due to the strong rainfall intensities, a substantial amount of this water does not penetrate the soil and is transported away via overland flow.

The intensity of the wet season, as well as the total amount of rainfall, varies substantially from year to year. The annual average temperature is 27 °C and the seasonal temperature variability is less pronounced with mean daily temperature of 23.1 °C during the dry season and up to 29.4 °C (monthly means) during the “build-up”. The daily temperature amplitude varies much stronger with a maximum daily amplitude in July/August and a minimum in February.

At site one (Girraween, savanna site), a transect of sampling positions was established (Transect 1, T1), stretching approximately 500 m slightly down-slope into a small topographical depression (altitudinal difference less than 4 m over the transect distance). At five positions, spaced approximately 100 m, sampling positions were established. Soil cores were extracted at positions P1, P3, P5 (positions P2 and P4 were not used for this analysis, but to ensure consistent naming, the original position identifiers are used). P1 was located at the upper-most position of the topographic gradient, P3 250 m down-slope, and P5 at the lowest position. The individual sampling positions are referenced as T1P1, T1P3, and T1P5 in the manuscript.

Site T1 is representative for many savanna sites found in the region under comparable hygric conditions (see e.g., Grover et al., 2013; Liveseley et al., 2011) and the typical natural fire regime is a fire for two out of three years (Hutley et al., 2011). The site was located in a peri-urban environment where fire management in recent years reduced fire frequency (a general phenomena observed for settlements in this region, Elliott et al.,

2009) and woody cover was  $\sim 10$  to 20 % higher at this site than the extensive surrounding savanna that is burnt more frequently. Managed fires are usually lit frequently (fire return interval approximately 2–3 years) as low-intensity fires early in the dry season reducing the risk of higher intensity late dry season fires (P3, P5). The site P1 was privately owned and was not burned for more than 6 years (D. Georges, personal communication, 2010). Tree cover was highest at P1, while the landscape was more open towards the center of the transect. Tree cover increased again at P5 due to higher water availability at the bottom of the slope (cover approx. 40–50 %).

The improved pasture at site two was established in the 1960s by clearing savanna vegetation and ploughing and seeding of Pangola grass (*Digitaria eriantha*). The area was fertilized annually or every second year with approximately 50 kg phosphorus, 100 kg superphosphate and 100 kg urea in single fertilization events. Buffalo (*Bubalus bubalis*) graze the improved pasture during the wet season and for 3–4 weeks during the dry season (grazing intensity: one beast per ha), and a herd grazed the site until the soil cores were extracted. The site is referenced as T3P1 throughout the manuscript. This site is representative for floodplain-based grasslands of the Northern Territory, but soil textural composition differs slightly from site T1 (the difference is within site variance encountered in the area and thus deemed acceptable). Furthermore, in contrast to other sites in the area, landuse history is well documented.

At each position 12 soil cores were extracted for the incubation experiments under dry season conditions in 2010 and air dried immediately. For this, plastic cylinders (height: 20 cm, diameter: 14 cm) were driven into the soil and the surrounding soil removed. The cores were then carefully lifted from the ground and the bottom of the cylinder sealed with appropriate pipe caps, packed and sent to the laboratory at IMK-IFU, Karlsruhe Institute of Technology (Garmisch-Partenkirchen, Germany) for analysis. The extracted soil cores were divided into three groups of four cores for each sample position. The three groups were used for independent analysis with different moisture levels (WFPS: 25 %, 50 %, 75 %; see section “incubation setup” for details) and each analysis was replicated with three cores. One soil core was kept as a spare for each position.



## 2.2 Soil analysis

Soil organic carbon, total nitrogen, soil texture, and soil pH was analyzed by a commercial laboratory for all sampling positions (Dr. Janssen, Gillersheim, Germany). Microbial C and N was measured using the chloroform fumigation-extraction technique (Brookes et al., 1985). We sampled and sieved soil from cores of each field position. Three sub-samples were immediately extracted with 60 mL 0.5 M  $K_2SO_4$ , while another three samples were fumigated with chloroform vapor for 24 h and extracted similarly. Total organic carbon (TOC) and total chemically bound nitrogen (TNb) was measured using a TOC analyzer (DIMATOC 2000, Dimatec Analysentechnik GmbH, Essen, Germany) and a coupled chemoluminescence detector, respectively. See Dannenmann et al. (2006) for more details.

## 2.3 Incubation setup and detection of $N_2O$ , NO, $N_2$ and $CO_2$

In order to investigate the C and N trace gas exchange of the soil samples under a variety of environmental controls, we designed an incubation experiment. Soil water content of the stored cores was determined prior to the experiment gravimetrically by drying samples derived from the spare replicate core. The samples were dried at 105 °C for 24 h. Bulk density of the samples was also measured and used to calculate the pore volume and consequently the amount of water required to reach 25, 50 and 75 % WFPS.

$$WFPS[\%] = \frac{W_{vol}}{\left(1 - \frac{BD}{2.65}\right)}$$

$W_{vol}$  volumetric water content,

BD bulk density [ $g\ cm^{-3}$ ],

2.65 particle density [ $g\ cm^{-3}$ ].

The cores were first exposed to 20 °C temperature for pre-incubation before the air-dried samples were wetted to the desired soil moisture levels of 25 % WFPS (M25), 50 % WFPS

(M50), and 75 % WFPS (M75), respectively. To avoid a bias of follow-up measurements, all three soil moisture levels were analyzed with independent cores. The moisture content was adjusted bi-daily by weighing the cores and adding evaporated water at least one hour prior to the measurements. Note that we report average trace gas fluxes for the **second segment** of each incubation step in order to exclude transition effects from raising temperatures. Soil cores were sealed with gas-permeable foil immediately after the sampling procedure to minimize the evaporative loss of water. During the course of the incubation period, the temperature was step-wise increased from 20 to 30 and to 40 °C. In-between measurement events, all soil cores were incubated in thermostat cabinets (Lovibond ET 651-8, Tintometer GmbH, Dortmund, Germany) at the prescribed incubation temperature. The cabinets were ventilated with low-flow pumps to prevent CO<sub>2</sub> enrichment or temperature gradients.

The air-dried soil cores were measured for up to 10 days prior to the initial wetting at each incubation run to record the baseline emission and to test the detection setup. N<sub>2</sub>O, NO and CO<sub>2</sub> emissions were measured approximately every second to third day. After the initial wetting, soil cores were incubated and measured until the initial “pulse-event” leveled off and flux rates approached a relatively stable emission level. Afterwards, the temperature was raised to 30 °C and measurements continued. **After 2–3 weeks of incubation at 30 °C, the temperature was increased again by 10 °C to 40 °C. A schematic of the incubation and measurement schedule is given in Fig. 2.**

The static chamber technique (e.g, Smith et al., 1995) was used to measure N<sub>2</sub>O and CO<sub>2</sub> fluxes. The soil cores were closed with gas-tight lids equipped with a port and septum for gas sampling. The headspace of each of the 12 soil cores (T1P1, T1P3, T1P5, and T3P1;  $n = 3$ ) was determined individually (average headspace volume 1.54 L). Four gas samples of 5 mL chamber air were drawn from the port at 0, 20, 40, and 60 min after closure using 20 mL plastic syringes fitted with three-way stop-cocks and injected into vacuumized sampling veils. The sample veils and a set of veils with standard gas mixture for calibration (0.4 ppmv N<sub>2</sub>O, 400 ppmv CO<sub>2</sub>; Air Liquide, Düsseldorf, Germany) were placed into two auto-sampler systems (HT280T, HTA s.r.l., Brescia, Italy) attached to gas chromatographs (SRI 8610C, SRI Instruments, Torrance, CA, USA) systems equipped with a <sup>63</sup>Ni electron

detector (ECD) for N<sub>2</sub>O analysis and an flame ionization detector and methanizer for CO<sub>2</sub> analysis. We used high-purity N<sub>2</sub> as carrier gas and installed ascarite filter to exclude any interference of CO<sub>2</sub> on N<sub>2</sub>O detection. Flux rates of N<sub>2</sub>O and CO<sub>2</sub> were calculated from the observed linear increases of sampled chamber air using linear regression (e.g., Papen and Butterbach-Bahl, 1999).

Nitric oxide emissions were measured immediately after sampling for N<sub>2</sub>O/CO<sub>2</sub> analysis using a dynamic chamber technique (e.g., Yamulki et al., 1997) and chemoluminescence detector (CLD 770 AL ppt, Ecophys AG, Dürnten, Switzerland). A sealing lid with inlet and outlet fittings was attached to the soil core, and synthetic air (79% N<sub>2</sub>, 21% O<sub>2</sub>) was pumped through the headspace. The NO flux was calculated from the inlet/outlet NO concentrations in a dynamic equilibrium with constant gas flow rate. Steady-state conditions were reached approximately after 20–25 min, and the average detected flow rate over 5 min after this grace period was used to determine the flux. The detector was periodically calibrated in the laboratory with standard gas and a calibration unit (for details see, Butterbach-Bahl et al., 1997).

Following N<sub>2</sub>O, CO<sub>2</sub> and NO flux measurements of an incubation run (M25, M50, and M75 incubation runs, respectively), soils from the experiments were finally used to measure N<sub>2</sub> fluxes by the helium gas flow technique (Butterbach-Bahl et al., 2002). For this any three replicated soil cores of one sample site were destructively subsampled to create seven soil cores for the helium soil core incubation vessel. The gas flux measurements were conducted after, once again, wetting the soil material to the required moisture level. The closed vessels were then exposed to a series of temperature settings (20 °C, 30 °C, and 40 °C).

The custom-build system developed for soil core incubation is described in detail in Danenmann et al. (2011). The system consists of two vessels for N<sub>2</sub> and N<sub>2</sub>O emissions measurements, and each vessel holds seven soil cores of 4 cm height and 100 cm<sup>3</sup> volume each, which are incubated together in order to account for soil spatial heterogeneity. Prior to flux measurements, the soil and headspace atmosphere in the vessels is replaced by an artificial gas mixture (20 ppm N<sub>2</sub>, 400 ppb N<sub>2</sub> and 20% O<sub>2</sub> in helium) by two days of

gas flushing from bottom to top through the soil cores. The required extreme gas tightness of the vessels against intrusion of atmospheric  $N_2$  is ensured by double sealings purged with helium, and by placing the incubation vessels with its tubing connections under water (Dannenmann et al., 2011). After the soil and headspace flushing period,  $N_2$  and  $N_2O$  concentrations are measured hourly in the headspace over a period of 8 h in order to allow for calculation of  $N_2$  and  $N_2O$  gas fluxes (Butterbach-Bahl et al., 2002). Similar to previous use of the system (Dannenmann et al., 2011), regular measurements with empty vessels showed no increase of  $N_2$  in the system over the measurement period.

## 2.4 Data analysis and presentation

All analysis and plotting was carried out using R 2.15 (R Development Core Team, 2011). Differences between measured gas fluxes at the various incubation settings and tests for comparable air-dried soil conditions were investigated using a multiple comparison of means procedure (Herberich et al., 2010) as group sizes and distributions varied substantially in the comparison. Relative importance of environmental factors controlling trace gas emissions was assessed using multiple linear regression analysis and a tool for variance decomposition (proportional marginal variance decomposition, R package “relaimpo”, see Grömping, 2007). Statistical significance is given at the 95 % difference level ( $p \leq 0.05$ ), and error bars denote standard deviation if not specified otherwise.  $N_2O$  uptake rates are presented as negative emissions.

## 3 Results

### 3.1 Soil analysis

Physico-chemical properties of the sampled soil cores are given in Table 1. All cores had a very sandy texture composition ( $T1 > 80\%$ ,  $T3 = 68\%$ ), but the pasture site T3 had a higher fraction of clay (15 %). Note that this discrepancy is within the landscape variability encountered in this area. Bulk density was highest at position T1P5 ( $1.7 \text{ g cm}^{-3}$ ) and in

5 a range of  $1.4$  to  $1.5 \text{ g cm}^{-3}$  for the other soil cores. Soil pH was ranging from  $4.4$  to  $5.1$ . With  $0.8$  and  $0.7\%$ , total organic carbon was very low for sites T1P3 and T1P5, respectively, higher at the grassland site T3P1 ( $1.5\%$ ) and highest for site T1P1 ( $2.8\%$ ). Total nitrogen concentrations were also low and ranged between  $0.04\%$  and  $0.1\%$ . The C/N ratios were also widest for site T1P1 ( $24.1$ ) and most narrow for site T1P5 ( $15.5$ ). With  $222.1 \mu\text{g C g}^{-1}$  soil dry weight (sdw) microbial carbon and  $35.7 \mu\text{g N g}^{-1}$  sdw microbial nitrogen, the samples from the improved pasture site were approximately  $2.3$ – $3.6$  times (carbon) and  $4.7$ – $7.8$  times (nitrogen) richer, respectively, in microbial nitrogen than the samples from natural savanna (T1).

10 Ammonium concentrations were low for the soil samples from the savanna transect positions ranging from  $2.4$  to  $3.9 \mu\text{g N g}^{-1}$  sdw, but almost a magnitude higher for the sampled grassland site ( $23.6 \mu\text{g N g}^{-1}$  sdw). Nitrate concentrations did not vary significantly between the two sampled sites (T1:  $5.5$ – $12.1 \mu\text{g N, g}^{-1}$  sdw, T3:  $9.7 \mu\text{g N, g}^{-1}$  sdw).

## 3.2 Gas fluxes

### 15 3.2.1 CO<sub>2</sub> emissions

The CO<sub>2</sub> baseline emission during pre-incubation (unwatered,  $20^\circ\text{C}$ ) was  $0.1 \pm 2.7 \text{ mg C m}^{-2} \text{ h}^{-1}$  (T1) and  $1.0 \pm 3.8 \text{ mg C m}^{-2} \text{ h}^{-1}$  (T3) and not significantly different between transect positions or transects. Immediately after watering the soil cores, CO<sub>2</sub> emissions rose for all three watering levels (M25, M50, and M75) and all replicates (see Fig. 3). Peak emissions generally occurred immediately after watering (day 0 of incubation section: D0), and emissions at the following day (D+1) dropped to  $70\%$  (M25),  $38\%$  (M50), and  $37\%$  (M75) of the initial pulse emission response recorded at D0. After two days (D+2), CO<sub>2</sub> emissions declined further to levels of  $26$ – $34\%$  before stabilizing at those levels and eventually increasing again (see Fig. 3). During the pulse emission event (D0–D+2), the average CO<sub>2</sub> emission was  $62.8 \pm 43.7 \text{ mg C m}^{-2} \text{ h}^{-1}$  (min:  $7.7 \text{ mg C m}^{-2} \text{ h}^{-1}$ , max:  $195.1 \text{ mg C m}^{-2} \text{ h}^{-1}$ ). Pulse intensity was found to differ significantly between natural savanna soil cores of transect T1 ( $55.5 \pm 39.8 \text{ mg C m}^{-2} \text{ h}^{-1}$ ) and improved pasture at tran-

Discussion Paper | Discussion Paper | Discussion Paper

sect T3 ( $75.1 \pm 46.4 \text{ mg C m}^{-2} \text{ h}^{-1}$ ), but not between individual transect positions. After the initial pulse event,  $\text{CO}_2$  emissions remained relatively stable for all three moisture levels at  $20^\circ\text{C}$  soil temperature (Fig. 3).

5 Average  $\text{CO}_2$  emission at  $20^\circ\text{C}$  (after the pulse event) were  $19.2 \pm 6.4 \text{ mg C m}^{-2} \text{ h}^{-1}$  (M25),  $23.1 \pm 6.9 \text{ mg C m}^{-2} \text{ h}^{-1}$  (M50), and  $36.2 \pm 18.5 \text{ mg C m}^{-2} \text{ h}^{-1}$  (M75), indicating a direct link between soil moisture and  $\text{CO}_2$  emission strength. Fluxes recorded at M75 were significantly higher than those obtained at M25 and M50 ( $p < 0.001$ ). In contrast to the pulse emission,  $\text{CO}_2$  emissions from T3 ( $30.5 \pm 16.2 \text{ mg C m}^{-2} \text{ h}^{-1}$ ) were not significantly higher than those from T1 ( $25.2 \pm 13.9 \text{ mg C m}^{-2} \text{ h}^{-1}$ ). No significant difference between individual transect positions was detected. It is noteworthy that  $\text{CO}_2$  emissions for some individual cores (T1P1R1, T1P3R1) were substantially higher for M75 conditions than those from the other two replicates, resulting in high standard deviations. At  $30^\circ\text{C}$  soil temperature, average  $\text{CO}_2$  emissions were again not found to differ significantly between T1 ( $36.0 \pm 17.2 \text{ mg C m}^{-2} \text{ h}^{-1}$ ) and T3 ( $43.3 \pm 20.8 \text{ mg C m}^{-2} \text{ h}^{-1}$ ,  $n = 45$ ), but moisture levels were again significantly correlated with higher emissions (M25:  $34.1 \pm 14.5 \text{ mg C m}^{-2} \text{ h}^{-1}$ , M50:  $35.6 \pm 20.4 \text{ mg C m}^{-2} \text{ h}^{-1}$ , M75:  $44.0 \pm 18.6 \text{ mg C m}^{-2} \text{ h}^{-1}$ ). No significant differences were recorded for  $\text{CO}_2$  fluxes from cores originating from different transect positions, indicating that physico-chemical soil properties did not have a major influence on  $\text{CO}_2$  emissions. Since no data is available from the  $40^\circ\text{C}$  incubation temperature run with M25 cores, we do not report results for transect positions or transects, as the higher moisture levels (M50 and M75 only) lead to biased mean fluxes due to the strong response of  $\text{CO}_2$  fluxes to moisture levels. See the discussion section for an in-depth analysis of temperature effects on emissions.

### 3.2.2 $\text{N}_2\text{O}$ emissions

25 Nitrous oxide emissions under pre-incubation conditions were low and did not differ significantly between transect positions or transects (T1:  $0.0 \pm 1.4 \mu\text{g N m}^{-2} \text{ h}^{-1}$ , T3:  $-0.2 \pm 1.9 \mu\text{g N m}^{-2} \text{ h}^{-1}$ ). We measured low  $\text{N}_2\text{O}$  uptake or zero  $\text{N}_2\text{O}$  emissions for 8 out of 12 cores under these conditions (min:  $-6.2 \mu\text{g N m}^{-2} \text{ h}^{-1}$ ), but variance ranged from 0.3

to  $3.6 \mu\text{g N m}^{-2} \text{h}^{-1}$ . Increased  $\text{N}_2\text{O}$  emissions were detected immediately after watering the cores (D0), but average emissions during the defined peak event (D0 – D+2) were relatively modest for 33 out of 36 cores sampled at T1 (avg:  $3.2 \pm 3.1 \mu\text{g N m}^{-2} \text{h}^{-1}$ , max:  $13.7 \mu\text{g N m}^{-2} \text{h}^{-1}$ ) and T3 (avg:  $4.9 \pm 6.2 \mu\text{g N m}^{-2} \text{h}^{-1}$ , max:  $24.2 \mu\text{g N m}^{-2} \text{h}^{-1}$ ), but the results for T1 and T3 were not significantly different. Very strong  $\text{N}_2\text{O}$  emissions were recorded for three individual cores at M75 (T1P1R1:  $85.8 \mu\text{g N m}^{-2} \text{h}^{-1}$ , T1P1R2:  $106.2 \mu\text{g N m}^{-2} \text{h}^{-1}$ , T1P3R1:  $180.2 \mu\text{g N m}^{-2} \text{h}^{-1}$ ) after a delay of two or six days and remained systematically higher throughout the incubation experiment (see Fig. 4). Due to their distinctly different emission patterns, those three cores are excluded from further analysis here and discussed in detail at the end of this section. Intensity of pulse emissions correlated positively with saturation levels (M25:  $2.7 \pm 3.2 \mu\text{g N m}^{-2} \text{h}^{-1}$ , M50:  $3.2 \pm 4.1 \mu\text{g N m}^{-2} \text{h}^{-1}$ , M75:  $5.8 \pm 5.0 \mu\text{g N m}^{-2} \text{h}^{-1}$ ). After the initial pulse,  $\text{N}_2\text{O}$  emissions at  $20^\circ\text{C}$  were  $1.2 \pm 3.8 \mu\text{g N m}^{-2} \text{h}^{-1}$  (T1) and  $0.6 \pm 1.0 \mu\text{g N m}^{-2} \text{h}^{-1}$  (T3), and no significant differences were detected for transect positions or transects. At  $30^\circ\text{C}$ ,  $\text{N}_2\text{O}$  emissions increased slightly to  $1.4 \pm 1.8 \mu\text{g N m}^{-2} \text{h}^{-1}$  (T1) and  $2.6 \pm 5.1 \mu\text{g N m}^{-2} \text{h}^{-1}$  (T3). At  $40^\circ\text{C}$ ,  $\text{N}_2\text{O}$  emission substantially increased over the results obtained at  $30^\circ\text{C}$ , but due to missing results for the M25 incubation run, we do not report site averages here.

### 3.2.3 NO emissions

Pre-incubation emissions were  $6.7 \pm 4.3 \mu\text{g N m}^{-2} \text{h}^{-1}$  (T1) and  $7.0 \pm 5.0 \mu\text{g N m}^{-2} \text{h}^{-1}$  (T3), and no significant differences were detected between the transect positions or transects. Large NO emission pulses of  $27.7\text{--}306.5 \mu\text{g N m}^{-2} \text{h}^{-1}$  were recorded after the addition of water at D0 (see Fig. 5). Furthermore, NO emission strength was negatively correlated with water saturation (M25:  $141.2 \pm 70.9 \mu\text{g N m}^{-2} \text{h}^{-1}$ , M50:  $48.4 \pm 26.6 \mu\text{g N m}^{-2} \text{h}^{-1}$ , M75:  $22.1 \pm 15.2 \mu\text{g N m}^{-2} \text{h}^{-1}$ ), and pulse strength did not significantly differ between transects. NO emissions at the following day (D+1) dropped sharply to 16% (M25), 40% (M50), and 28% (M75) of the initial pulse emission response at D0. After two days (D+2), NO emissions further decreased to 10–26% of the emission of D0. After the initial pulse, average NO emissions at  $20^\circ\text{C}$  were below pre-incubation levels and ranged from  $3.2 \pm 1.8$

$5.8 \pm 2.9 \mu\text{g N m}^{-2} \text{h}^{-1}$  for the four transect positions being  $4.9 \pm 2.7 \mu\text{g N m}^{-2} \text{h}^{-1}$  at T1 and  $3.2 \pm 1.8 \mu\text{g N m}^{-2} \text{h}^{-1}$  at T3 (differences not significant). NO emissions increased at  $30^\circ\text{C}$  incubation temperature to  $6.7 \pm 4.3 \mu\text{g N m}^{-2} \text{h}^{-1}$  (T1) and  $6.5 \pm 6.9 \mu\text{g N m}^{-2} \text{h}^{-1}$  (T3), respectively. At  $40^\circ\text{C}$ , a marked increase of NO emission was observed for the majority of soil

5 cores watered to 50 % WFPS, while NO emissions at 75 % WFPS only increased slightly or remained constant (see Fig. 5). Again, as no M25 measurements are available, we do not give site averages for  $40^\circ\text{C}$ , but the significant increase of NO emissions can be highlighted when M50 and M75 NO emissions obtained at  $40^\circ\text{C}$  are compared to the fluxes measured under  $30^\circ\text{C}$ . NO emissions under medium moisture levels (M50) increased from  $6.7 \pm 5.1 \mu\text{g N m}^{-2} \text{h}^{-1}$  at  $30^\circ\text{C}$  to  $52 \pm 87.5 \mu\text{g N m}^{-2} \text{h}^{-1}$ , while high moisture levels (M75) only led to an increase from  $5.0 \pm 4.9 \mu\text{g N m}^{-2} \text{h}^{-1}$  to  $11.5 \pm 13.7 \mu\text{g N m}^{-2} \text{h}^{-1}$ . A negative correlation between moisture levels and NO emission strength was observed for all episodes of the incubation experiment. We did not detect significant differences between both land-use types for temperatures up to  $30^\circ\text{C}$ , but at  $40^\circ\text{C}$ , NO emission was significantly higher at the savanna transect than at the improved pasture.

### 3.2.4 $\text{N}_2$ emissions

An incubation setup with the same number of replications as performed for  $\text{N}_2\text{O}$ , NO and  $\text{CO}_2$  measurements was not feasible due to the time required to perform a single  $\text{N}_2$  measurement (see section 2.3). We thus report results as transect averages (T1,  $n = 3$ ) and single measurement incubation results (T3). However, in each measurement cycle, soil from all replicate cores was pooled in the sampling cuvette and thus, the results are based on multi-core soil conditions (in case of T3 without true measurement replication). Dinitrogen emissions varied between 16.7 and  $2350.4 \mu\text{g N m}^{-2} \text{h}^{-1}$ . As shown in Table 2,  $\text{N}_2$  emissions were strongly influenced by water saturation. Average  $\text{N}_2$  emissions did increase from M50 to M75 by a factor of 11 to 16 for savanna soil (T1), whereas emission strength did not differ between M25 and M50. Although no true replication is available for T3 results, a similar pattern can be observed, but we do not contrast results from the two transects due to differences in sample numbers.



In general,  $N_2$  emissions dominate the gaseous nitrogen losses at T1 (see Table 3). While  $N_2O$  emissions account only for 0.3–3.6 % of gaseous N losses,  $N_2$  emissions represent up to 99.3 %. Note that inclusion of  $N_2O$  outlier emissions reduced the share of  $N_2$  losses only by one percent (Table 3). NO emissions contributed to 5.6–16.5 % at low to medium soil saturations and 20 to 30 °C soil temperatures. Only at 40 °C and medium soil saturation (M50), NO emissions did account for a substantial fraction of total N losses to the atmosphere (43.2 %). At high water saturation, NO emissions were insignificant and contributed only 0.3–1.1 %.

## 4 Discussion

### 4.1 $CO_2$ emissions

Decomposition of organic matter and root respiration lead to the emission of  $CO_2$  from the soil, but since the soil cores were removed from the field and any existing fine roots were cut, the observed fluxes represent only soil respiration  $CO_2$  efflux. Even though our major focus was on the emission of nitrogen gases,  $CO_2$  emissions can also be useful as a proxy to identify the relative availability/production of substrate for the microbial processes responsible for  $N_2O$ , NO and  $N_2$  losses.

Carbon dioxide emissions increased with rising temperature and high moisture levels (Table 2), and soil temperature was identified to have the highest relative importance, followed by soil moisture variations, in explaining the observed  $CO_2$  emissions (Fig. 6). The strong temperature dependency of decomposition and associated  $CO_2$  emissions, given a certain moisture level, is well known in the literature and was reported for many ecosystems (Raich and Schlesinger, 1992). In general,  $CO_2$  emissions from tropical savanna in Northern Australia were found to increase through the seasons (dry, wet-dry transition, wet), but due to relatively minor seasonal variations in temperature, changes in soil moisture are considered to be the dominant control in these ecosystems (Grover et al., 2012). This was also reported for African savannas (Brümmer et al., 2009a) and the wet-dry tropics of the Amazon Basin

(Davidson et al., 2000). Strong break-of-season (pulse) emissions ranging between 100–250 mg C m<sup>-2</sup> h<sup>-1</sup> were previously reported for natural savanna in Africa (Brümmer et al., 2009a) and are in-line with our observations. We found no significant differences in average CO<sub>2</sub> emissions between pasture cores and cores from the natural savanna site.

## 5 4.2 N<sub>2</sub>O emissions

Measurements of gaseous nitrogen losses from tropical savanna are still scarce in the literature (e.g., Castaldi et al., 2006; Dalal and Allen, 2008; Stehfest and Bouwman, 2006; Steinkamp and Lawrence, 2011) and to our knowledge no previous study investigated the emission of N<sub>2</sub>O, NO and N<sub>2</sub> simultaneously. Annual N<sub>2</sub>O emission from tropical savanna systems were reported to range from 0.06 to 1.46 kg N yr<sup>-1</sup> (mean: 0.6 kg N yr<sup>-1</sup>) and to be lower for Australian savannas (0.06–1.08 kg N yr<sup>-1</sup>, median: 0.19 kg N yr<sup>-1</sup>) due to drier conditions and smaller amounts of N deposited from the atmosphere (Dalal and Allen, 2008). From previous in-situ measurements at an area close to transect T1, it was calculated that soils only acted as minor sinks or sources for N<sub>2</sub>O annually (–0.015 kg N ha<sup>-1</sup> yr<sup>-1</sup>, Livesley et al., 2011), a result also found to be true for savanna soils of the Daly River south of our site, which receives substantially less annual precipitation (0.02 kg N ha<sup>-1</sup> yr<sup>-1</sup>, Grover et al., 2012).

For total site exchange, it has to be noted that termite mounds have been identified as hot-spots of N<sub>2</sub>O emissions in savannas (e.g., Brümmer et al., 2009b) and are abundant in savannas of tropical Australia (Dawes-Gromadzki, 2008), but the total contribution to the soil–atmosphere exchange is highly variable in space. It was also reported that below-ground termite activity can (often only temporarily) add to on-site variability of measured in-situ fluxes (Livesley et al., 2011). Very low N<sub>2</sub>O emission or even soil N<sub>2</sub>O uptake was also previously reported for tropical savanna soils under dry season conditions (Andersson et al., 2003; Castaldi et al., 2006; Donoso et al., 1993; Livesley et al., 2011; Sanhueza et al., 1990), and low mineral N content was considered to be a major controlling factor (Rosenkranz et al., 2006), although many other controls and processes are discussed (Chapuis-Lardy et al., 2007).

We also observed very low N<sub>2</sub>O emissions and occasional N<sub>2</sub>O uptake by the soil cores with a maximum soil uptake rate of  $-6.2 \mu\text{g N m}^{-2} \text{h}^{-1}$  during pre-incubation measurements of our air-dried soil samples at 20 °C. At low (M25) and medium (M50) moisture conditions, average N<sub>2</sub>O emissions ranged from 0.3 to  $5.4 \mu\text{g N m}^{-2} \text{h}^{-1}$  and were inline with the low N<sub>2</sub>O emissions previously observed from nearby sites (Grover et al., 2012; Livesley et al., 2011). The observed N<sub>2</sub>O uptake rates are also inline with the reported range of  $-1.0$  to  $-10 \mu\text{g N m}^{-2} \text{h}^{-1}$  for upland soils (Schlesinger, 2013).

The N<sub>2</sub>O emissions observed for the improved pasture site under dry to medium moisture levels, were also low and did not differ significantly to the natural savanna site, which was to be expected as the analysis of physicochemical properties did not reveal significant differences between the two plots either (Table 1). This similarity is somewhat remarkable as the improved pasture site did receive substantial amounts of P and N over 40 years. Similar results were reported for young and old pastures under dry season conditions in the Daly region, Northern Territory, Australia, but emissions from old pasture under wet conditions were higher ( $> 25 \mu\text{g N m}^{-2} \text{h}^{-1}$ ). A direct comparison is difficult, however, as soil water content reported (dry:  $\sim 5\%$  WFPS, medium:  $\sim 37\%$  WFPS, wet:  $\sim 53\%$ ) does not align with our incubation setup. However, the general range of reported in-situ flux measurements from savanna and pasture shows good agreement with our laboratory results (Grover et al., 2012).

As stated before, we excluded the results for three of the nine savanna soil cores measured with 75% WFPS from the previous discussion as they clearly did exhibit different emission patterns. In contrast to the other cores, N<sub>2</sub>O emission increases of those cores were delayed by 2 to 3 days, and strong N<sub>2</sub>O emissions (T1P1R1:  $33.7 \pm 29.8 \mu\text{g N m}^{-2} \text{h}^{-1}$ , T1P1R2:  $26.3 \pm 17.8 \mu\text{g N m}^{-2} \text{h}^{-1}$ , T1P3R1:  $52.3 \pm 37.0 \mu\text{g N m}^{-2} \text{h}^{-1}$ ,  $n = 8$ ) were measured throughout the incubation run. If those outlier results are included (see Table 2), average N<sub>2</sub>O emissions are 1.4 to 3.8 times higher and thus substantially higher than those reported for savanna soil and on par with reported pasture fluxes under wet conditions (see, Grover et al., 2012). Although the cause for these substantially different emission patterns could not be determined, we hypothesize that small-scale mineralization hotspots (e.g.,

5 due to availability of organic material from dead soil fauna or plant residuals) account for this observation. These findings underline the importance of taking spatial heterogeneity into account when designing field samplings, and it is a strong indication that more spatial replicates would help to fully assess site scale soil–atmosphere fluxes. However, the nature of incubation experiments (i.e., the need for timely replicate sampling, laboratory constraints and climate controlled storage) severely limits the number of samples, though the gas pooling technique may offer ways to overcome spatial heterogeneity (Arias-Navarro et al., 2013; Morris et al., 2013).

10 Nitrous oxide emissions were positively correlated with temperature and soil moisture (see Table 2), and their variations were found to explain 58.6 and 41.3 %, respectively, of the variance of N<sub>2</sub>O emissions if a simple linear two-parameter regression model was used (pmvd method, total variance: 46.0 %). Inclusion of soil properties did not further improve the linear model (see decomposition plot, Fig. 6). Previous results also show a positive correlation between soil temperature and N<sub>2</sub>O emissions (Castaldi et al., 2010),  
15 but other authors found no clear linear correlation (Brümmer et al., 2008; Scholes et al., 1997), although observing clear diurnal patterns (Brümmer et al., 2008). Previous studies from tropical savanna and seasonally dry tropical forest sites identified changes in WFPS to dominate the N<sub>2</sub>O emission patterns (Brümmer et al., 2008; Castaldi et al., 2010; Davidson et al., 1993; Grover et al., 2012; Rees et al., 2006), but in general, N<sub>2</sub>O emissions from  
20 undisturbed savanna soil ranked lowest for seasonally dry ecosystems due to low nutrient availability and soil textures favoring quick drainage (Castaldi et al., 2006). In accordance, significant positive correlations were reported for clay content and soil volumetric water content (Castaldi et al., 2004), factors which strongly determine the pore space and water saturation and thus soil aeration and anaerobiosis. It is well established that oxygen saturation  
25 in the soil air controls the level of aerobic nitrification and anaerobic denitrification microbial activity (Davidson et al., 1993) and thus nitrogen pathways and process rates. Compared to tropical biomes of seasonally dry or humid tropical forests (e.g., Butterbach-Bahl et al., 2004b; Gharahi Ghehi et al., 2012; Kiese et al., 2003; Werner et al., 2007b), the annual N<sub>2</sub>O emissions from savanna soils seem to be substantially lower, which is hypothesized

to originate from N depletion via pyro-denitrificatory losses (bush fires), shorter wet periods with prevailing denitrificatory conditions in combination with well-drained soils and lower amounts of total nitrogen cycling within the system (Castaldi et al., 2006; Davidson et al., 2001). Other studies have not found significant effects of soil moisture on N<sub>2</sub>O emissions under in-situ conditions (Livesley et al., 2011), and is assumed that a lack of seasonality and low nitrogen levels provide the rationale for this observation.

### 4.3 NO emissions

Nitric oxide emissions measured at low moisture conditions (M25) and 20 to 30 °C soil temperature were  $6.4 \pm 2.4$  and  $9.1 \pm 4.8 \mu\text{g N m}^{-2} \text{h}^{-1}$ , respectively, and therefore higher than the fluxes reported for African sites during the dry season ( $1.6\text{--}2.2 \mu\text{g m}^{-2} \text{h}^{-1}$ , Meixner et al., 1997; Serça et al., 1998) but comparable to dry season conditions observed in Venezuela (Cárdenas et al., 1993). A link between the magnitude of NO emissions from savanna soil and soil water content and nutrient availability has been postulated by various authors (Cárdenas et al., 1993; Feig et al., 2008; Parsons et al., 1996; Poth et al., 1995; Rondón et al., 1993). It was reported that soil moisture is the dominant factor whenever it is not limiting the NO flux, but emission strength is modulated by daily variation of soil temperature (Meixner et al., 1997). A significant correlation of NO emissions with soil pH was also reported (Poth et al., 1995), and it is in agreement with the outcome of our relative importance analysis where pH scored second after soil temperature in explaining observed NO emissions post pulse (Fig. 6). The low score of soil moisture in this analysis can be explained by the non-linear response of NO to changing soil moisture levels and is also reflected in the low total explanatory power of 19.4%. High soil temperatures (40 °C) in combination with medium moisture levels (M50) resulted in strongest NO emissions ( $65.0 \pm 97.8 \mu\text{g N m}^{-2} \text{h}^{-1}$ ), with high intra-core variability. This indicates a substantial importance of aerobic ammonia oxidation based pathways for NO emission (Butterbach-Bahl et al., 2013). Previous studies from African savannas on sandy soils suggest that maximum NO emissions occur at a narrow WFPS range between 10 to 25 % WFPS (Arani-bar et al., 2004; Feig et al., 2008; Otter et al., 1999) and that a strong linear increase of NO

emissions occurs with increasing temperatures starting at 25 °C to 30 °C (Aranibar et al., 2004). It was also reported that NO emission decreases again at a soil temperature exceeding 40 °C (Passianoto et al., 2004), but such extreme soil temperatures were not included in our experimental setup. In accordance with this, the analysis of T1 site cores (savanna) showed strongest emissions for pulsing after the initial rewetting and the following incubation steps for the lowest soil moisture treatment (M25). It is noteworthy that pulse emissions again were slightly stronger at M25 conditions for pasture cores, the following measurements revealed no difference in emission strength between the three moisture levels at the first temperature interval. At 30 °C soil temperature, emissions for the driest cores remained low but M50 cores exhibited higher NO emissions (see Fig. 5).

Unfortunately, no measurements were conducted for low moisture conditions (M25) and high soil temperatures (40 °C) during the first incubation sequence of our work and thus, we can only speculate that NO emissions at low moisture levels (M25) would have even exceeded our maximum NO emissions recorded due to nitrification activity peaking at moisture levels below 50 % WFPS (see literature citations above).

#### 4.4 N<sub>2</sub> emissions and total gaseous nitrogen losses

Dinitrogen emissions varied greatly between the different incubation setups (17–2350 µg N m<sup>-2</sup> h<sup>-1</sup>), and this range is comparable to results reported for temperate forests (Butterbach-Bahl et al., 2013; Dannenmann et al., 2008). The N<sub>2</sub> emission rates were clearly dominated by soil saturation (see Table 2 and Fig. 6). Average N<sub>2</sub> emissions for savanna soil below 50 % WFPS and under any implemented temperature setting was ranging from 45 to 108 µg N m<sup>-2</sup> h<sup>-1</sup>, while average N<sub>2</sub> emissions with highest water saturation (M75) were ranging from 627 to 1201 µg N m<sup>-2</sup> h<sup>-1</sup>. It is thus not surprising that the analysis of relative importance revealed that approximately 75 % of the variance of N<sub>2</sub> emissions was explained by changes in WFPS. Variations in pH accounted for another 23 % of variance (Fig. 6), while the other factors did not contribute to explain the observed N<sub>2</sub> emissions. The dominance of WFPS is in line with common knowledge about the functioning of denitrification, given that N<sub>2</sub> production is catalyzed by the enzyme N<sub>2</sub>O-reductase,

which in-turn is up-regulated by low oxygen concentrations (Spiro, 2012). From calculating fractions it is clear that  $N_2$  is the dominant compound of gaseous losses, often exceeding  $N_2O$  and  $NO$  emissions by several magnitudes (Table 3).  $N_2$  accounted for 82–99 % of all gaseous N losses from savanna soils for the investigated incubation intervals, except for the 50 % WFPS/40 °C setup, where strong  $NO$  emissions were accounting for 43 % of all N emissions.

The  $N_2$ -dominated N gas product ratios across all soil moisture levels might appear surprising at first, since strong  $N_2$  soil emission has been associated with strictly anaerobic soil conditions and the investigated sandy soil textures may facilitate good aeration and thus impair formation of anaerobic microsites. It is however increasingly recognized that our previous knowledge on rather low  $N_2$  loss from ecosystems is falsified by systematic but irreproducible underestimation of  $N_2$  emission estimates due to the failure of the widely applied acetylene inhibition technique to indirectly estimate  $N_2$  loss (Butterbach-Bahl et al., 2013). In contrast, the few available reliable direct measurements of  $N_2$  emission from upland soil obtained with state-of-the-art methods such as the helium soil core incubation technique generally revealed large ecosystem  $N_2$  losses (Butterbach-Bahl et al., 2013). This is in line with recent evidence about unexpectedly large abundance and diversity of the  $N_2O$  reducing microbial community in soil, not restricted to denitrifiers (Jones et al., 2013; Sanford et al., 2012). The latter findings could provide a microbiological explanation for high importance of  $N_2$  loss in upland soil in general and probably also for the savanna soils investigated in this study.

## 4.5 Pulse emissions

Significant  $N_2O$  pulse emissions following the first rains after a dry season, often with a small temporal delay, have been reported for different seasonally dry (sub-)tropical ecosystems (Brümmer et al., 2008; Davidson et al., 1993; Scholes et al., 1997; Werner et al., 2007a) and are often preceded by significant  $CO_2$  emissions immediately after the soil is re-moistured. We also measured significant  $CO_2$  pulse emissions for all three watering levels immediately after water addition, but emissions dropped significantly in the

following days. It has been stated that this pattern is caused by water-induced activation of soil microbes after pronounced dry season periods leading to immediate mineralization of accumulated organic material and subsequent consumption of freshly produced  $\text{NH}_4^+/\text{NH}_3^-$  through nitrification (Davidson et al., 1993).

5 The initial watering lead to  $\text{N}_2\text{O}$  pulse emissions with peak emissions immediately after water addition, but they were, with three days duration, only short-lived (a pattern that was previously reported for African savanna soil, Brümmer et al., 2008; Scholes et al., 1997). The occurrence of  $\text{N}_2\text{O}$  pulsing emissions was previously reported by Grover et al. (2012) for in-situ measurements at a nearby savanna site, but emissions were, in accordance with  
10 our laboratory results, several magnitudes below reported break-of-seasons pulse emissions reported for tropical rainforests (Butterbach-Bahl et al., 2004b; Werner et al., 2007b). We did observe a positively correlated increase of  $\text{N}_2\text{O}$  pulse emissions with watering intensity, but with an average pulse emission of  $5.8 \pm 5.0 \mu\text{g N m}^{-2} \text{ h}^{-1}$  for our highest watering intensity (M75) the amount of N released to the atmosphere was still minor. It has to be  
15 noted that, due to experimental design restrictions (consecutive incubation variations of temperature), we only measured initial pulse emissions under rather low temperature settings, and given the observed positive correlation of  $\text{N}_2\text{O}$  emissions with temperature, pulse emissions at higher temperatures would have been even more pronounced.

Strong NO pulse emissions were reported for many sites from seasonally-dry tropics  
20 (Brümmer et al., 2008; Levine et al., 1996; Scholes et al., 1997) and rainforests with seasonality (Butterbach-Bahl et al., 2004b) and are now an essential part in models simulating global NO emissions (Steinkamp and Lawrence, 2011; Yan et al., 2005; Yienger and Levy, 1995). The immediate emission of NO after watering was also observed by Pinto et al. (2002), who measured up to 100-fold increased NO emissions above pre-watering levels to  $105 \mu\text{g N m}^{-2} \text{ h}^{-1}$ , but noted that results varied substantially between collars. These  
25 results are inline with our observed peak pulse emissions, which also varied between 27.7 and  $306.5 \mu\text{g N m}^{-2} \text{ h}^{-1}$ . In contrast to  $\text{N}_2\text{O}$  peak emission, the response was negatively correlated with moisture saturation. For soils of seasonally dry tropical rainforests in Mexico and Australia, high rates of NO emissions and quick temporal responses to the first rainfall



events were observed (Butterbach-Bahl et al., 2004b; Davidson et al., 1993, 1991). The authors also state that rainfall events during the wet season triggered only minor emission events, providing pointers that the duration and severity of antecedent dry periods ultimately determines the magnitude of response of NO emissions to wetting events (Butterbach-Bahl et al., 2004a; Davidson et al., 1993). Thus, these pronounced pulse emissions events are thought to contribute substantially to the annual total of NO emissions (Butterbach-Bahl et al., 2004b; Ludwig et al., 2001).

Due to incubation design and the required destructive sampling of soil cores for N<sub>2</sub> analysis, pulsing effects on N<sub>2</sub> emission were not investigated (N<sub>2</sub> analysis for the various incubation conditions was carried out after the N<sub>2</sub>O, NO and CO<sub>2</sub> incubation runs were completed).


#### 4.6 Estimate of annual emission potentials

In order to estimate the potential annual soil-atmosphere exchange of N<sub>2</sub>O, NO, N<sub>2</sub>, and CO<sub>2</sub> from savanna soil, we used daily soil moisture and soil temperature records from a long-term eddy flux tower site (Howard Springs) located within 6 km from site T1 to extrapolate our results. The soil properties of the flux tower site are comparable to site T1 and sensors were placed at 10 cm depth (data provided by L. Hutley for years 2001–2013).

The site data was discretized into classes of soil moisture (SM) and soil temperature (ST) to link with the incubation setup classification. Annual fluxes are the sum of daily emission for the existing SM/ ST condition at this day. Finally, the annual estimates were averaged to acknowledge the inter-annual variability of hygric conditions of this region. On average, 58% of a year were assigned to class M25T30 (ST: 25 °C, SM: 37.5 % WFPS), followed by 36% of class M50T30 (ST: 25–35 °C, SM: 37.5–62.5 % WFPS). For only 14 days per year WFPS levels exceeded 62.5% (M75 conditions), indicating that these extreme moisture conditions only play a minor role for the annual budget (see Table 4 for a detailed annual classification).

In the following we present upscaled flux rates without pulse emission contribution as a minimum scenario as we did not investigate the effect of consecutive water-

ing/ drying cycles in our incubation setup. Based on climate data for the 13 years period the average of annual emissions (excluding pulse emissions) is estimated to amount to  $0.12 \pm 0.02 \text{ kg N ha}^{-1} \text{ yr}^{-1}$  ( $\text{N}_2\text{O}$ ),  $0.68 \pm 0.02 \text{ kg N ha}^{-1} \text{ yr}^{-1}$  ( $\text{NO}$ ),  $6.65 \pm 1.07 \text{ kg N ha}^{-1} \text{ yr}^{-1}$  ( $\text{N}_2$ ), and  $2718.96 \pm 72.33 \text{ kg C ha}^{-1} \text{ yr}^{-1}$  ( $\text{CO}_2$ ). Thus,  $\text{N}_2$  emission dominates the total annual gaseous nitrogen loss (89%), and  $\text{N}_2\text{O}$  and  $\text{NO}$  only contribute 1.6% and 9.3%, respectively. In addition to these base emission levels we can estimate additional losses per pulse emission event. Given our data, we estimate an additional release of  $1.2 \text{ g N ha}^{-1} \text{ yr}^{-1} \text{ event}^{-1}$  ( $\text{N}_2\text{O}$ ),  $37.9 \text{ g N ha}^{-1} \text{ yr}^{-1} \text{ event}^{-1}$  ( $\text{NO}$ ), and  $22.2 \text{ kg C ha}^{-1} \text{ yr}^{-1} \text{ event}^{-1}$  ( $\text{CO}_2$ ). Since the actual number of pulse events is not known we use a range of 1 to 5 3-day pulse events. This leads to the conclusion that pulse emission may only contribute 0.8–3.9% and 1.0–4.8% to annual  $\text{CO}_2$  and  $\text{N}_2\text{O}$  emissions, respectively. The strong pulse emissions observed for  $\text{NO}$  are reflected in the potential contribution to annual  $\text{NO}$  emissions. For 1 to 5 pulse emission events they could contribute between 5.3 to 21.8% to the annual release of  $\text{NO}$  from soil. Due to experimental restrictions we cannot report  $\text{N}_2$  pulse emissions.

The numbers indicate that on average savanna soils loose approximately  $7.5 \text{ kg N ha}^{-1}$  to the atmosphere. In contrast, it is estimated that approximately  $2 \text{ kg N ha}^{-1} \text{ yr}^{-1}$  are deposited in remote rural areas of Australia (Meyer et al., 2001), but biological nitrogen fixation rates and nitrogen leaching are currently unknown. 

## 5 Conclusion

We reported the  $\text{N}_2\text{O}$ ,  $\text{NO}$ ,  $\text{N}_2$  and  $\text{CO}_2$  emission response of intact soil cores from tropical savanna and pasture to a range of climatic conditions. The laboratory analysis of intact soil cores allows for an analysis under controlled soil moisture and temperature conditions while largely preserving the structural components of the soil column, although influence of flora and macro-fauna is lost compared to in-situ measurements.

Key findings of our analysis are:

1. Soil–atmosphere exchange of NO and CO<sub>2</sub> under late dry season conditions was very low and for N<sub>2</sub>O often even negative.
- 5 2. Total atmospheric loss of nitrogen was dominated by N<sub>2</sub> emissions under all but one tested soil climatic conditions (82.4–99.3 % of total gaseous N loss), but NO emissions contributed almost 43.2 % to the total gaseous loss at 50 % WFPS and 30 °C soil temperature.
- 10 3. N<sub>2</sub>O emissions were substantially higher for 3 out of 12 soil cores investigated and indicate substantial spatial variability at site level (maximum N<sub>2</sub>O emission rate: 180 µg N m<sup>-2</sup> h<sup>-1</sup>). This has implications for site-scale estimates and extrapolation of soil–atmosphere exchange rates.
- 15 4. Pulse emissions were observed for N<sub>2</sub>O, NO and CO<sub>2</sub> immediately after water addition, but they were only short-lived (24–72 h). The magnitude of pulse emissions was positively correlated with soil moisture addition for CO<sub>2</sub> and N<sub>2</sub>O, but negatively correlated for NO. Three of the cores displayed a different N<sub>2</sub>O emission pattern with no initial pulse response, but prolonged elevated N<sub>2</sub>O after the first days. However, pulse emissions may only contribute significant amounts to the annual emission budget of NO (5.3–21.8 %).
- 20 5. Upscaling to annual total suggests that savanna soil from this ecosystem only emits 0.12 kg N<sub>2</sub>O – N ha<sup>-1</sup> yr<sup>-1</sup>. The estimated total annual emission of NO and N<sub>2</sub> was 0.68 kg N ha<sup>-1</sup> yr<sup>-1</sup> and 6.65 kg N ha<sup>-1</sup> yr<sup>-1</sup>, respectively (data excluding contribution from pulse emissions).
- 25 6. We did not detect significant differences in emission magnitudes and patterns for our soil samples derived from savanna and pasture despite differing textural composition, higher carbon content in microbial biomass, higher NH<sub>4</sub><sup>+</sup> concentrations and the on-going fertilization of the pasture (note, that only one pasture site was investigated versus three savanna sites).

7. Major controls on emission levels were soil moisture and temperature for  $\text{N}_2\text{O}$  and  $\text{CO}_2$  emissions, soil temperature and pH for NO (soil moisture effect was not detected due to non-linear response in the analysis), and soil moisture and pH for  $\text{N}_2$ .

The results indicate that the gaseous loss of nitrogen in savannas from northern Australia is largely controlled by NO emissions at high soil temperatures and low moisture conditions and  $\text{N}_2$  losses, whereas the soil–atmosphere exchange of  $\text{N}_2\text{O}$  is generally low or even negative after pronounced dry periods. We did encounter strong  $\text{N}_2\text{O}$  emissions for few individual cores, but no explanation for this emission pattern could be detected from the soil physico-chemical properties of these cores. This indicates that a higher replication or larger sample areas are required to determine the  $\text{N}_2\text{O}$  exchange of these systems more reliably.

*Acknowledgements.* The authors are grateful for the generous support of the staff of Charles Darwin University, Darwin, Australia during the field campaign. This research was funded as part of project WE 4519/1-1 “N trace gas emissions from tropical ecosystems and responses to global changes” by the German Science Foundation (DFG) with additional support from a FSU 2009 grant of Karlsruhe Institute of Technology (KIT). We acknowledge support by Deutsche Forschungsgemeinschaft and Open Access Publishing Fund of Karlsruhe Institute of Technology.

The service charges for this open access publication have been covered by a Research Centre of the Helmholtz Association.

## References

- Andersson, M., Kj oller, A., and Struwe, S.: Soil emissions of nitrous oxide in fire-prone African savannas, *J. Geophys. Res.-Atmos.*, 108, 4630, doi:10.1029/2002JD003345, 2003.
- Aranibar, J. N., Otter, L. B., Macko, S. A., Feral, C., Epstein, H., Dowty, P. R., Eckardt, F., Shugart, H. H., and Swart, R. J.: Nitrogen cycling in the soil–plant system along a precipitation gradient in the Kalahari sands, *Glob. Change Biol.*, 10, 359–373, doi:10.1111/j.1365-2486.2003.00698.x, 2004.

- Arias-Navarro, C., Díaz-Pinés, E., Kiese, R., Rosenstock, T. S., Rufino, M. C., Stern, D., Neufeldt, H., Verchot, L. V., and Butterbach-Bahl, K.: Gas pooling: a sampling technique to overcome spatial heterogeneity of soil carbon dioxide and nitrous oxide fluxes, *Soil Biol. Biochem.*, 67, 20–23, doi:10.1016/j.soilbio.2013.08.011, 2013.
- 5 Bond, W. J. and Keeley, J. E.: Fire as a global “herbivore”: the ecology and evolution of flammable ecosystems, *Trends Ecol. Evol.*, 20, 387–394, doi:10.1016/j.tree.2005.04.025, 2005.
- Breuer, L., Papen, H., and Butterbach-Bahl, K.: N<sub>2</sub>O emission from tropical forest soils of Australia, *J. Geophys. Res.-Atmos.*, 105, 26353–26367, doi:10.1029/2000JD900424, 2000.
- 10 Brookes, P. C., Landman, A., Pruden, G., and Jenkinson, D. S.: Chloroform fumigation and the release of soil nitrogen: a rapid direct extraction method to measure microbial biomass nitrogen in soil, *Soil Biol. Biochem.*, 17, 837–842, doi:10.1016/0038-0717(85)90144-0, 1985.
- Brümmer, C., Brüggemann, N., Butterbach-Bahl, K., Falk, U., Szarzynski, J., Vielhauer, K., Wassmann, R., and Papen, H.: Soil–atmosphere exchange of N<sub>2</sub>O and NO in near-natural savanna and agricultural land in Burkina Faso (W. Africa), *Ecosystems*, 11, 582–600, doi:10.1007/s10021-008-9144-1, 2008.
- 15 Brümmer, C., Papen, H., Wassmann, R., and Brüggemann, N.: Fluxes of CH<sub>4</sub> and CO<sub>2</sub> from soil and termite mounds in south Sudanian savanna of Burkina Faso (West Africa), *Global Biogeochem. Cy.*, 23, , GB1001, doi:10.1029/2008GB003237, 2009a.
- Brümmer, C., Papen, H., Wassmann, R., and Brüggemann, N.: Termite mounds as hot spots of nitrous oxide emissions in South-Sudanian savanna of Burkina Faso (West Africa), *Geophys. Res. Lett.*, 36, L09814, doi:10.1029/2009GL037351, 2009b.
- 20 Butterbach-Bahl, K., Gasche, R., Breuer, L., and Papen, H.: Fluxes of NO and N<sub>2</sub>O from temperate forest soils: impact of forest type, N deposition and of liming on the NO and N<sub>2</sub>O emissions, *Nutr. Cycl. Agroecosys.*, 48, 79–90, doi:10.1023/A:1009785521107, 1997.
- 25 Butterbach-Bahl, K., Willibald, G., and Papen, H.: Soil core method for direct simultaneous determination of N<sub>2</sub> and N<sub>2</sub>O emissions from forest soils, *Plant Soil*, 240, 105–116, 2002.
- Butterbach-Bahl, K., Kesik, M., Miehle, P., Papen, H., and Li, C.: Quantifying the regional source strength of N-trace gases across agricultural and forest ecosystems with process based models, *Plant Soil*, 260, 311–329, doi:10.1023/B:PLSO.0000030186.81212.fb, 2004a.
- 30 Butterbach-Bahl, K., Kock, M., Willibald, G., Hewett, B., Buhagiar, S., Papen, H., and Kiese, R.: Temporal variations of fluxes of NO, NO<sub>2</sub>, N<sub>2</sub>O, CO<sub>2</sub>, and CH<sub>4</sub> in a tropical rain forest ecosystem, *Global Biogeochem. Cy.*, 18, GB3012, doi:10.1029/2004GB002243, 2004b.

- Butterbach-Bahl, K., Baggs, E. M., Dannenmann, M., Kiese, R., and Zechmeister-Boltenstern, S.: Nitrous oxide emissions from soils: how well do we understand the processes and their controls?, *Philos. T. R. Soc. B*, 368, 20130122, doi:10.1098/rstb.2013.0122, 2013.
- 5 Castaldi, S., de Pascale, R. A., Grace, J., Nina, N., Montes, R., and José, S. J.: Nitrous oxide and methane fluxes from soils of the Orinoco savanna under different land uses, *Glob. Change Biol.*, 10, 1947–1960, doi:10.1111/j.1365-2486.2004.00871.x, 2004.
- Castaldi, S., Ermice, A., and Strumia, S.: Fluxes of N<sub>2</sub>O and CH<sub>4</sub> from soils of savannas and seasonally-dry ecosystems, *J. Biogeogr.*, 33, 401–415, doi:10.1111/j.1365-2699.2005.01447.x, 2006.
- 10 Castaldi, S., de Grandcourt, A., Rasile, A., Skiba, U., and Valentini, R.: CO<sub>2</sub>, CH<sub>4</sub> and N<sub>2</sub>O fluxes from soil of a burned grassland in Central Africa, *Biogeosciences*, 7, 3459–3471, doi:10.5194/bg-7-3459-2010, 2010.
- Cárdenas, L., Rondón, A., Johansson, C., and Sanhueza, E.: Effects of soil moisture, temperature, and inorganic nitrogen on nitric oxide emissions from acidic tropical savanna soils, *J. Geophys. Res.*, 98, 14783–14790, doi:10.1029/93JD01020, 1993.
- 15 Chapuis-Lardy, L., Wrage, N., Metay, A., Chotte, J.-L., and Bernoux, M.: Soils, a sink for N<sub>2</sub>O? A review, *Glob. Change Biol.*, 13, 1–17, doi:10.1111/j.1365-2486.2006.01280.x, 2007.
- Conrad, R.: Soil microorganisms as controllers of atmospheric trace Gases (H<sub>2</sub>, CO, CH<sub>4</sub>, OCS, N<sub>2</sub>O, and NO), *Microbiol. Rev.*, 60, 609–640, 1996.
- 20 Cook, G. D. and Heerdegen, R. G.: Spatial variation in the duration of the rainy season in monsoonal Australia, *Int. J. Climatol.*, 21, 1723–1732, doi:10.1002/joc.704, 2001.
- Dalal, R. C. and Allen, D. E.: Turner review no. 18, greenhouse gas fluxes from natural ecosystems, *Aust. J. Bot.*, 56, 369–407, doi:10.1071/BT07128, 2008.
- Dannenmann, M., Gasche, R., Ledebuhr, A., and Papen, H.: Effects of forest management on soil N cycling in beech forests stocking on calcareous soils, *Plant Soil*, 287, 279–300, doi:10.1007/s11104-006-9077-4, 2006.
- 25 Dannenmann, M., Butterbach-Bahl, K., Gasche, R., Willibald, G., and Papen, H.: Dinitrogen emissions and the N<sub>2</sub>:N<sub>2</sub>O emission ratio of a Rendzic Leptosol as influenced by pH and forest thinning, *Soil Biol. Biochem.*, 40, 2317–2323, doi:10.1016/j.soilbio.2008.05.009, 2008.
- 30 Dannenmann, M., Willibald, G., Sippel, S., and Butterbach-Bahl, K.: Nitrogen dynamics at undisturbed and burned Mediterranean shrublands of Salento Peninsula, Southern Italy, *Plant Soil*, 343, 5–15, doi:10.1007/s11104-010-0541-9, 2011.

Davidson, E. A.: Fluxes of nitrous oxide and nitric oxide from terrestrial ecosystems, in: *Microbial Production and Consumption of Greenhouse Gases: Methane, Nitrogen Oxides and Halomethanes*, American Society for Microbiology, Washington, 219–235, 1991.

Davidson, E. A. and Kingerlee, W.: A global inventory of nitric oxide emissions from soils, *Nutr. Cycl. Agroecosys.*, 48, 37–50, doi:10.1023/A:1009738715891, 1997.

Davidson, E. A., Vitousek, P. M., Matson, P. A., Riley, R. H., García-Méndez, G., and Maass, J. M.: Soil emissions of nitric oxide in a seasonally dry tropical forest of México, *J. Geophys. Res.*, 96, 15439–15445, doi:10.1029/91JD01476, 1991.

Davidson, E. A., Matson, P. A., Vitousek, P. M., Riley, R. H., Dunkin, K., García-Méndez, G., and Maass, J. M.: Processes regulating soil emissions of NO and N<sub>2</sub>O in a seasonally dry tropical forest, *Ecology*, 74, 130–139, doi:10.2307/1939508, 1993.

Davidson, E. A., Bustamante, M. M. D. C., and de Siqueira Pinto, A.: Emissions of nitrous oxide and nitric oxide from soils of native and exotic ecosystems of the Amazon and cerrado regions of Brazil, *The Scientific World*, 1, 312–319, doi:10.1100/tsw.2001.261, 2001.

Davidson, E. A., Verchot, L. V., Cattânio, J. H., Ackerman, I. L., and Carvalho, J. E. M.: Effects of soil water content on soil respiration in forests and cattle pastures of eastern Amazonia, *Biogeochemistry*, 48, 53–69, doi:10.1023/A:1006204113917, 2000.

Dawes-Gromadzki, T. Z.: Abundance and diversity of termites in a savanna woodland reserve in tropical Australia, *Aust. J. Entomol.*, 47, 307–314, doi:10.1111/j.1440-6055.2008.00662.x, 2008.

Donoso, L., Santana, R., and Sanhueza, E.: Seasonal-variation of N<sub>2</sub>O fluxes at a tropical savanna site – soil consumption of N<sub>2</sub>O during the dry season, *Geophys. Res. Lett.*, 20, 1379–1382, doi:10.1029/93GL01537, 1993.

Dwyer, E., Pinnock, S., Gregoire, J., and Pereira, J. M. C.: Global spatial and temporal distribution of vegetation fire as determined from satellite observations, *Int. J. Remote Sens.*, 21, 1289–1302, 2000.

Eamus, D. and Prior, L. D.: Ecophysiology of trees of seasonally dry tropics: comparisons among phenologies, *Adv. Ecol. Res.*, 32, 113–197, doi:10.1016/S0065-2504(01)32012-3, 2001.

Elliott, L. P., Franklin, D. C., and Bowman, D. M. J. S.: Frequency and season of fires varies with distance from settlement and grass composition in *Eucalyptus miniata* savannas of the Darwin region of northern Australia, *Int. J. Wildland Fire*, 18, 61–70, doi:10.1071/WF06158, 2009.

Feig, G. T., Mamtimin, B., and Meixner, F. X.: Soil biogenic emissions of nitric oxide from a semi-arid savanna in South Africa, *Biogeosciences*, 5, 1723–1738, doi:10.5194/bg-5-1723-2008, 2008.

- Felber, R., Conen, F., Flechard, C. R., and Neftel, A.: Theoretical and practical limitations of the acetylene inhibition technique to determine total denitrification losses, *Biogeosciences*, 9, 4125–4138, doi:10.5194/bg-9-4125-2012, 2012.
- 5 Frost, P., Medina, E., Menaut, J.-C., Solbrig, O. T., Swift, M., and Walker, B.: Responses of savannas to stress and disturbance: a proposal for a collaborative programme of research, IUBS, Paris, 1986.
- Gharahi Ghehi, N., Werner, C., Cizungu Ntaboba, L., Mbonigaba Muhinda, J. J., Van Ranst, E., Butterbach-Bahl, K., Kiese, R., and Boeckx, P.: Spatial variations of nitrogen trace gas emissions from tropical mountain forests in Nyungwe, Rwanda, *Biogeosciences*, 9, 1451–1463, doi:10.5194/bg-9-1451-2012, 2012.
- 10 Granli, T. and Bøckman, O. C.: Nitrous oxide (N<sub>2</sub>O) emissions from soils in warm climates, *Fert. Res.*, 42, 159–163, 1995.
- Groffman, P. M., Altabet, M. A., Böhlke, J. K., Butterbach-Bahl, K., David, M. B., Firestone, M. K., Giblin, A. E., Kana, T. M., Nielsen, L. P., and Voytek, M. A.: Methods for measuring denitrification: diverse approaches to a difficult problem, *Ecol. Appl.*, 16, 2091–2122, doi:10.1890/1051-0761(2006)016[2091:MFMDDA]2.0.CO;2, 2006.
- 15 Grover, S. P. P., Livesley, S. J., Hutley, L. B., Jamali, H., Fest, B., Beringer, J., Butterbach-Bahl, K., and Arndt, S. K.: Land use change and the impact on greenhouse gas exchange in north Australian savanna soils, *Biogeosciences*, 9, 423–437, doi:10.5194/bg-9-423-2012, 2012.
- 20 Grömping, U.: Estimators of relative importance in linear regression based on variance decomposition, *Am. Stat.*, 61, 139–147, doi:10.1198/000313007X188252, 2007.
- Herberich, E., Sikorski, J., and Hothorn, T.: A robust procedure for comparing multiple means under heteroscedasticity in unbalanced designs, *PLOS ONE*, 5, e9788, doi:10.1371/journal.pone.0009788, 2010.
- 25 Hutley, L. B. and Setterfield, S. A.: Savannas, in: *Encyclopedia of Ecology*, vol. 4, Elsevier, Oxford, 3143–3154, 2008.
- Hutley, L. B., Beringer, J., Isaac, P. R., Hacker, J. M., and Cernusak, L. A.: A sub-continental scale living laboratory: spatial patterns of savanna vegetation over a rainfall gradient in northern Australia, *Agr. Forest Meteorol.*, 151, 1417–1428, doi:10.1016/j.agrformet.2011.03.002, 2011.
- 30 Jones, C. M., Graf, D. R., Bru, D., Philippot, L., and Hallin, S.: The unaccounted yet abundant nitrous oxide-reducing microbial community: a potential nitrous oxide sink, *ISME J.*, 7, 417–426, doi:10.1038/ismej.2012.125, 2013.



- Kiese, R., Hewett, B., Graham, A., and Butterbach-Bahl, K.: Seasonal variability of N<sub>2</sub>O emissions and CH<sub>4</sub> uptake by tropical rainforest soils of Queensland, Australia, *Global Biogeochem. Cy.*, 17, 1043, doi:10.1029/2002GB002014, 2003.
- Lehmann, C. E. R., Prior, L. D., and Bowman, D. M. J. S.: Decadal dynamics of tree cover in an Australian tropical savanna, *Austral. Ecol.*, 34, 601–612, doi:10.1111/j.1442-9993.2009.01964.x, 2009.
- Levine, J. S., Winstead, E. L., Parsons, D. A. B., Scholes, M. C., Scholes, R. J., Cofer III, W. R., Cahoon, D. R., and Sebacher, D.: Biogenic soil emissions of nitric oxide (NO) and nitrous oxide (N<sub>2</sub>O) from savannas in South Africa: the impact of wetting and burning, *J. Geophys. Res.-Atmos.*, 101, 23689–23697, doi:10.1029/96JD01661, 1996.
- Linn, D. N. and Doran, J. W.: Effect of water-filled pore space on carbon dioxide and nitrous oxide production in tilled and nontilled soils, *Soil Sci. Soc. Am. J.*, 48, 1267–1272, 1984.
- Livesley, S. J., Grover, S. P. P., Hutley, L. B., Jamali, H., Butterbach-Bahl, K., Fest, B., Beringer, J., and Arndt, S. K.: Seasonal variation and fire effects on CH<sub>4</sub>, N<sub>2</sub>O and CO<sub>2</sub> exchange in savanna soils of northern Australia, *Agr. Forest Meteorol.*, 151, 1440–1452, doi:10.1016/j.agrformet.2011.02.001, 2011.
- Lonsdale, W. M.: Inviting trouble: introduced pasture species in northern Australia, *Aust. J. Ecol.*, 19, 345–354, doi:10.1111/j.1442-9993.1994.tb00498.x, 1994.
- Ludwig, J., Meixner, F. X., Vogel, B., and Forstner, J.: Soil–air exchange of nitric oxide: an overview of processes, environmental factors, and modeling studies, *Biogeochemistry*, 52, 225–257, doi:10.1023/A:1006424330555, 2001.
- Meixner, F. X., Fickinger, T., Marufu, L., Serça, D., Nathaus, F. J., Makina, E., Mukurumbira, L., and Andreae, M. O.: Preliminary results on nitric oxide emission from a southern African savanna ecosystem, *Nutr. Cycl. Agroecosys.*, 48, 123–138, doi:10.1023/A:1009765510538, 1997.
- Meyer, C. P., Gillet, R. W., and Galbally, I. E.: The atmospheric nitrogen cycle over Australia, in: Nitrogen Workshop 2000 - Sources, transformations, effects and management of nitrogen in freshwater ecosystems, Land & Water Australia, Occasional paper 1000, 65–73, Canberra, 2001.
- Morris, S. G., Kimber, S. W. L., Grace, P., and Van Zwieten, L.: Improving the statistical preparation for measuring soil N<sub>2</sub>O flux by closed chamber, *Sci. Total Environ.*, 465, 166–172, doi:10.1016/j.scitotenv.2013.02.032, 2013.
- Otter, L. B., Yang, W. X., Scholes, M. C., and Meixner, F. X.: Nitric oxide emissions from a southern African savanna, *J. Geophys. Res.*, 104, 18471–18485, doi:10.1029/1999JD900148, 1999.

- Papen, H. and Butterbach-Bahl, K.: A 3-year continuous record of nitrogen trace gas fluxes from untreated and limed soil of a N-saturated spruce and beech forest ecosystem in Germany –  $\text{N}_2\text{O}$  emissions, *J. Geophys. Res.-Atmos.*, 104, 18487–18503, 1999.
- Parsons, D., Scholes, M. C., Scholes, R. J., and Levine, J. S.: Biogenic  $\text{NO}$  emissions from savanna soils as a function of fire regime, soil type, soil nitrogen, and water status, *J. Geophys. Res.*, 101, 23683–23688, 1996.
- Passianoto, C. C., Ahrens, T., Feigl, B. J., Steudler, P. A., Melillo, J. M., and do Carmo, J. B.: Diurnal changes in nitric oxide emissions from conventional tillage and pasture sites in the Amazon Basin: influence of soil temperature, *Plant Soil*, 258, 21–29, doi:10.1023/B:PLSO.0000016500.47714.30, 2004.
- Pinto, A. de S., Bustamante, M. M. D. C., Kisselle, K. W., Burke, R. A., Zepp, R. G., Viana, L. T., Varella, R. F., and Molina, M.: Soil emissions of  $\text{N}_2\text{O}$ ,  $\text{NO}$ , and  $\text{CO}_2$  in Brazilian Savannas: effects of vegetation type, seasonality, and prescribed fires, *J. Geophys. Res.-Atmos.*, 107, 57-1–57-9, doi:10.1029/2001JD000342, 2002.
- Poth, M., Anderson, I. C., Miranda, H. S., Miranda, A. C., and Riggan, P. J.: The magnitude and persistence of soil  $\text{NO}$ ,  $\text{N}_2\text{O}$ ,  $\text{CH}_4$ , and  $\text{CO}_2$  fluxes from burned tropical savanna in Brazil, *Global Biogeochem. Cy.*, 9, 503–513, doi:10.1029/95GB02086, 1995.
- R Development Core Team: R: a language and environment for statistical computing, R Foundation for Statistical Computing, Vienna, Austria, available at: <http://www.R-project.org>, 2011.
- Raich, J. W. and Schlesinger, W. H.: The global carbon dioxide flux in soil respiration and its relationship to vegetation and climate, *Tellus B*, 44, 81–99, doi:10.1034/j.1600-0889.1992.t01-1-00001.x, 1992.
- Rees, R. M., Wuta, M., Furlley, P. A., and Li, C.: Nitrous oxide fluxes from savanna (miombo) woodlands in Zimbabwe, *J. Biogeogr.*, 33, 424–437, doi:10.1111/j.1365-2699.2005.01423.x, 2006.
- Rolston, D. E., Hoffman, D. L., and Toy, D. W.: Field Measurement of Denitrification: I. Flux of  $\text{N}_2$  and  $\text{N}_2\text{O}$ , *Soil Sci. Soc. Am. J.*, 42, 863–869, doi:10.2136/sssaj1978.03615995004200060004x, 1978.
- Rondón, A., Johansson, C., and Sanhueza, E.: Emission of nitric oxide from soils and termite nests in a trachypogon savanna of the Orinoco Basin, *J. Atmos. Chem.*, 17, 293–306, doi:10.1007/BF00694402, 1993.
- Rosenkranz, P., Brüggemann, N., Papen, H., Xu, Z., Seufert, G., and Butterbach-Bahl, K.:  $\text{N}_2\text{O}$ ,  $\text{NO}$  and  $\text{CH}_4$  exchange, and microbial N turnover over a Mediterranean pine forest soil, *Biogeochemistry*, 3, 121–133, doi:10.5194/bg-3-121-2006, 2006.

- Russell-Smith, J. and Yates, C. P.: Australian savanna fire regimes: context, scales, patchiness, *Fire Ecology*, 3, 48–63, 2007.
- Russell-Smith, J., Yates, C. P., Whitehead, P. J., Smith, R., Craig, R., Allan, G. E., Thackway, R., Frakes, I., Cridland, S., Meyer, C. P. M., and Gill, A. M.: Bushfires “down under”: patterns and implications of contemporary Australian landscape burning, *Int. J. Wildland Fire*, 16, 361–377, doi:10.1071/WF07018, 2007.
- Sanford, R. A., Wagner, D. D., Wu, Q., Chee-Sanford, J. C., Thomas, S. H., Cruz-García, C., Rodriguez, G., Massol-Deya, A., Krishnani, K. K., Ritalahti, K. M., Nissen, S., Konstantinidis, K. T., and Löffler, F. E.: Unexpected nondenitrifier nitrous oxide reductase gene diversity and abundance in soils, *P. Natl. Acad. Sci. USA*, 109, 19709–19714, doi:10.1073/pnas.1211238109, 2012.
- Sanhueza, E., Hao, W. M., Scharffe, D. H., Donoso, L., and Crutzen, P. J.: N<sub>2</sub>O and NO emissions from soils of the northern part of the Guayana shield, Venezuela, *J. Geophys. Res.*, 95, 22481–22488, doi:10.1029/JD095iD13p22481, 1990.
- Schlesinger, W. H.: An estimate of the global sink for nitrous oxide in soils, *Glob. Change Biol.*, 19, 2929–2931, doi:10.1111/gcb.12239, 2013.
- Scholes, M. C., Martin, R., Scholes, R. J., Parsons, D., and Winstead, E. L.: NO and N<sub>2</sub>O emissions from savanna soils following the first simulated rains of the season, *Nutr. Cycl. Agroecosys.*, 48, 115–122, doi:10.1023/A:1009781420199, 1997.
- Scholes, R. J. and Hall, D. O.: The carbon budget of tropical savannas, woodlands and grasslands, in: *Global Change: Effects on Coniferous Forests and Grassland*, John Wiley & Sons Ltd, New York, 69–100, 1996.
- Serça, D., Delmas, R., Le Roux, X., Parsons, D. A. B., Scholes, M. C., Abbadie, L., Lensi, R., Ronce, O., and Labroue, L.: Comparison of nitrogen monoxide emissions from several African tropical ecosystems and influence of season and fire, *Global Biogeochem. Cy.*, 12, 637–651, doi:10.1029/98GB02737, 1998.
- Smith, K. A., Clayton, H., McTaggart, I. P., Thomson, P. E., Arah, J. R. M., Scott, A., Goulding, K. W. T., Monteith, J. L., and Phillips, V. R.: The measurement of nitrous oxide emissions from soil by using chambers, *Philos. T. R. Soc. A*, 351, 327–338, doi:10.2307/54419, 1995.
- Spiro, S.: Nitrous oxide production and consumption: regulation of gene expression by gas-sensitive transcription factors, *Philos. T. R. Soc. B*, 367, 1213–1225, doi:10.1098/rstb.2011.0309, 2012.
- Stehfest, E. and Bouwman, A. F.: N<sub>2</sub>O and NO emission from agricultural fields and soils under natural vegetation: summarizing available measurement data and modeling of global annual emissions, *Nutr. Cycl. Agroecosys.*, 74, 207–228, doi:10.1007/s10705-006-9000-7, 2006.

- Steinkamp, J. and Lawrence, M. G.: Improvement and evaluation of simulated global biogenic soil NO emissions in an AC-GCM, *Atmos. Chem. Phys.*, 11, 6063–6082, doi:10.5194/acp-11-6063-2011, 2011.
- 5 Werner, C., Zheng, X., Tang, J., Xie, B., Liu, C., Kiese, R., and Butterbach-Bahl, K.: N<sub>2</sub>O, CH<sub>4</sub> and CO<sub>2</sub> emissions from seasonal tropical rainforests and a rubber plantation in Southwest China, *Plant Soil*, 289, 335–353, doi:10.1007/s11104-006-9143-y, 2006.
- Werner, C., Butterbach-Bahl, K., Haas, E., Hickler, T., and Kiese, R.: A global inventory of N<sub>2</sub>O emissions from tropical rainforest soils using a detailed biogeochemical model, *Global Biogeochem. Cy.*, 21, GB3010, doi:10.1029/2006GB002909, 2007a.
- 10 Werner, C., Kiese, R., and Butterbach-Bahl, K.: Soil–atmosphere exchange of N<sub>2</sub>O, CH<sub>4</sub>, and CO<sub>2</sub> and controlling environmental factors for tropical rain forest sites in western Kenya, *J. Geophys. Res.*, 112, D03308, doi:10.1029/2006JD007388, 2007b.
- Williams, R. J., Carter, J. O., Duff, G. A., Woinarski, J. C. Z., Cook, G. D., and Farrer, S. L.: Carbon accounting, land management, science and policy uncertainty in Australian savanna landscapes: introduction and overview, *Aust. J. Bot.*, 53, 583–588, doi:10.1071/BT05181, 2005.
- 15 Yamulki, S., Harrison, R. M., Goulding, K. W. T., and Webster, C. P.: N<sub>2</sub>O, NO and NO<sub>2</sub> fluxes from a grassland: effect of soil pH, *Soil. Biol. Biochem.*, 29, 1199–1208, doi:10.1016/S0038-0717(97)00032-1, 1997.
- Yan, X., Ohara, T., and Akimoto, H.: Statistical modeling of global soil NO<sub>x</sub> emissions, *Global Biogeochem. Cy.*, 19, GB3019, doi:10.1029/2004GB002276, 2005.
- 20 Yienger, J. J. and Levy II, H.: Empirical model of global soil–biogenic NO<sub>x</sub> emissions, *J. Geophys. Res.*, 100, 11447–11464, doi:10.1029/95JD00370, 1995.

**Table 1.** Physico-chemical properties of the sampled soil and mean microbial biomass (sampling depth 0–15 cm, \*  $\mu\text{g C/N g [dry weight] soil}^{-1}$ ).

Land use	Pos.	Soil texture (%)			Density	Org. C (%)	Total N (%)	pH	Microbial biomass (*)		NH <sub>4</sub> <sup>+</sup> (*)	NO <sub>3</sub> <sup>-</sup> (*)
		Sand	Silt	Clay	(g cm <sup>-3</sup> )				C	N		
Natural savanna	T1 P1	81	12	7	1.4	2.8	0.1	5	97.5	18.4	3.1	12.1
	T1 P3	87	8	5	1.5	0.8	0.04	4.4	81.8	21.0	3.9	7.2
	T1 P5	87	10	3	1.7	0.7	0.05	5.1	61.0	14.5	2.4	5.5
Pasture	T3 P1	68	17	15	1.5	1.5	0.1	4.6	222.1	23.3	23.6	9.7

**Table 2.** Average CO<sub>2</sub>, N<sub>2</sub>O, NO, and N<sub>2</sub> emission at different moisture and temperature incubation settings (fluxes reported post-pulse, <sup>a</sup> value excl. outliers/brackets incl. outliers, <sup>b</sup> N<sub>2</sub>: T1 *n* = 3, T3: no replicates).

		WFPS [%]			Transect
		25	50	75	
carbon dioxide (mg CO <sub>2</sub> -C m <sup>-2</sup> h <sup>-1</sup> )					
Temperature [°C]	20	19.7 ± 6.8	21.5 ± 5.6	33.3 ± 18.7	T1
		17.6 ± 5.0	28.1 ± 8.7	45.1 ± 15.9	T3
	30	32.0 ± 15.9	25.4 ± 15.5	66.1 ± 20.2	T1
		38.8 ± 14.4	18.6 ± 8.7	31.3 ± 18.3	T3
	40		53.6 ± 26.0	75.8 ± 30.3	T1
			31.6 ± 10.8	38.4 ± 12.4	T3
nitrous oxide (µg N <sub>2</sub> O-N m <sup>-2</sup> h <sup>-1</sup> ) <sup>a</sup>					
Temperature [°C]	20	0.3 ± 0.4	0.5 ± 0.6	3.6 ± 7.2 (13.7 ± 29.0)	T1
		0.3 ± 0.3	0.5 ± 0.7	1.1 ± 1.4	T3
	30	0.6 ± 0.4	1.5 ± 2.4	3.1 ± 1.2 (9.6 ± 12.4)	T1
		0.4 ± 0.2	1.9 ± 2.3	8.2 ± 10.2	T3
	40		5.4 ± 4.8	13.7 ± 9.4 (19.6 ± 15.3)	T1
			4.1 ± 4.4	17.1 ± 14.5	T3
nitric oxide (µg NO-N m <sup>-2</sup> h <sup>-1</sup> )					
Temperature [°C]	20	6.4 ± 2.4	4.9 ± 2.1	3.4 ± 2.6	T1
		3.6 ± 1.7	4.2 ± 1.7	1.7 ± 1.1	T3
	30	9.1 ± 4.8	6.1 ± 3.1	3.5 ± 2.4	T1
		3.2 ± 1.5	8.4 ± 9.0	9.5 ± 8.2	T3
	40		65.0 ± 97.8	13.2 ± 15	T1
			12.9 ± 11.0	6.1 ± 6.7	T3
dinitrogen (µg N <sub>2</sub> -N m <sup>-2</sup> h <sup>-1</sup> ) <sup>b</sup>					
Temperature [°C]	20	107.6 ± 82.8	65.3 ± 26.5	1041.1 ± 255.8	T1
		400.6	110.1	1281.2	T3
	30	45.4 ± 33.2	56 ± 13	627.4 ± 789.1	T1
		311.3	118.9	348.3	T3
	40		79.9 ± 11.5	1201 ± 1625	T1
			207.0	614.4	T3



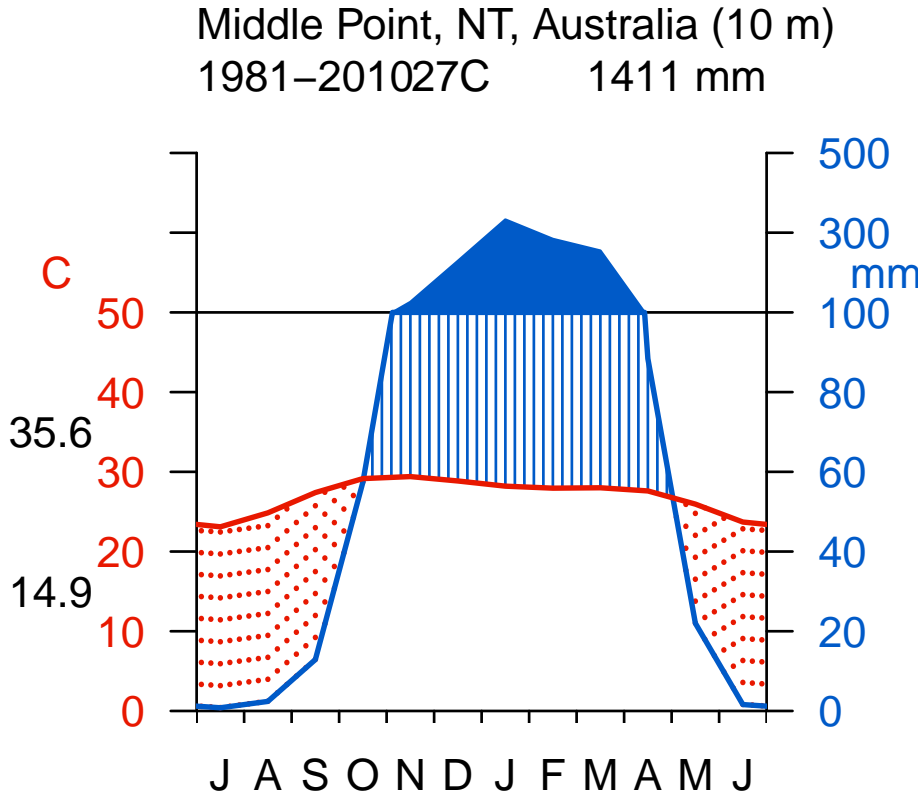
**Table 3.** Fractional contribution of N<sub>2</sub>O, NO and N<sub>2</sub> to total gaseous N losses of savanna soil at T1 (units: % of total gaseous N loss; N<sub>2</sub>O : NO : N<sub>2</sub>; <sup>a</sup> value excl. outliers/brackets incl. outliers).

		WFPS [%]		
		25	50	75 <sup>a</sup>
Temp. [°C]	20	0.3:5.6:94.1	0.7:6.9:92.4	0.3:0.3:99.3 (1.7:0.3:98)
	30	1.1:16.5:82.4	2.4:9.6:88.1	0.5:0.6:99.0 (1.6:0.5:97.9)
	40		3.6:43.2:53.2	1.1:1.1:97.8 (1.7:1.1:97.3)

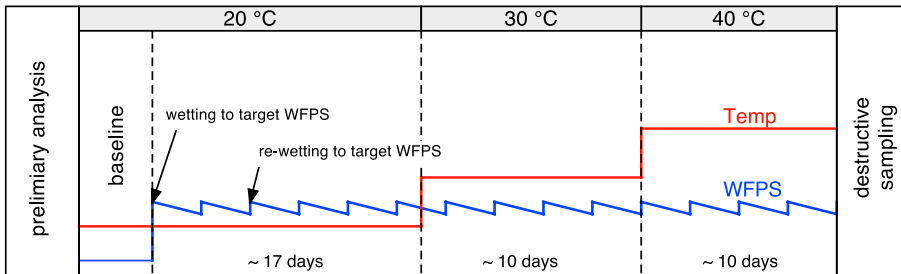
**Table 4.** Annual emission of N<sub>2</sub>O, NO, N<sub>2</sub> and CO<sub>2</sub> from savanna soil (excluding contribution from pulse emission events). The number of days per year with a given soil temperature (ST) and soil moisture (SM) are presented in addition to the resulting annual emission.

	SM [% WFPS]	ST [°C]								annual flux [kg C/ N ha <sup>-1</sup> yr <sup>-1</sup> ]			
		25 20	25 30	25 40	50 20	50 30	75 20	75 30	N <sub>2</sub> O	NO	N <sub>2</sub>	CO <sub>2</sub>	
Year	2001	0	205	0	0	152	0	8	0.10	0.68	5.48	2627.9	
	2002	0	226	12	0	117	1	9	0.10	0.70	5.77	2691.8	
	2003	0	223	13	0	99	1	29	0.14	0.69	8.52	2884.0	
	2004	0	223	5	3	118	0	17	0.12	0.69	6.66	2748.0	
	2005	0	213	2	0	147	0	3	0.09	0.69	4.77	2594.9	
	2006	0	203	7	1	132	3	19	0.14	0.67	7.69	2748.0	
	2007	0	233	0	0	111	2	19	0.13	0.69	7.39	2783.5	
	2008	0	219	5	0	124	0	18	0.12	0.68	6.80	2754.2	
	2009	0	223	7	0	120	0	15	0.11	0.69	6.38	2735.9	
	2010	0	172	0	0	175	0	18	0.13	0.65	6.94	2673.3	
	2011	10	176	0	0	156	3	20	0.14	0.65	8.03	2691.2	
	2012	0	225	23	0	107	0	11	0.10	0.71	5.78	2724.0	
	2013	0	207	0	0	144	0	14	0.12	0.67	6.30	2689.7	
		1	211	6	0	131	1	15	0.12±0.02	0.68±0.02	6.65±1.07	2718.96±72.33	

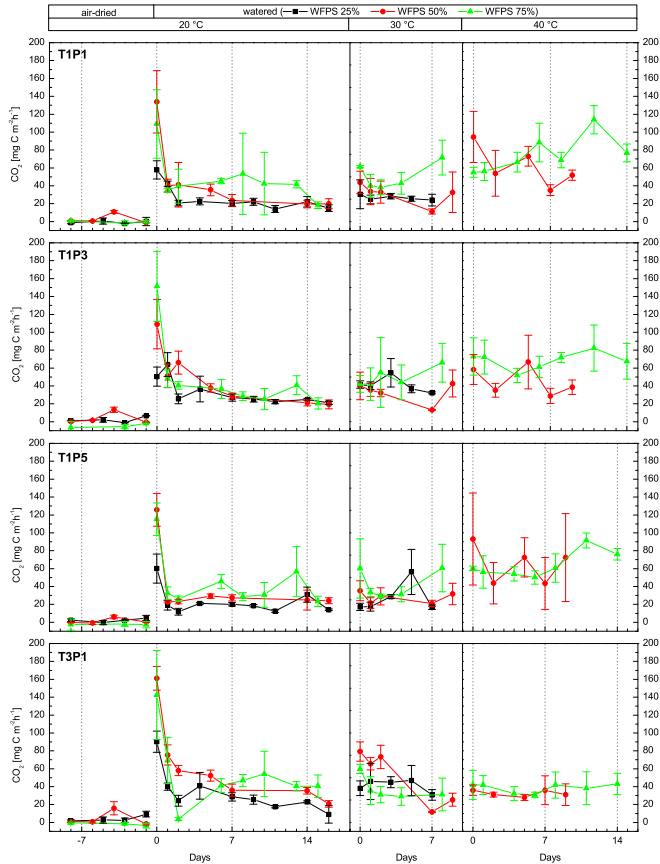




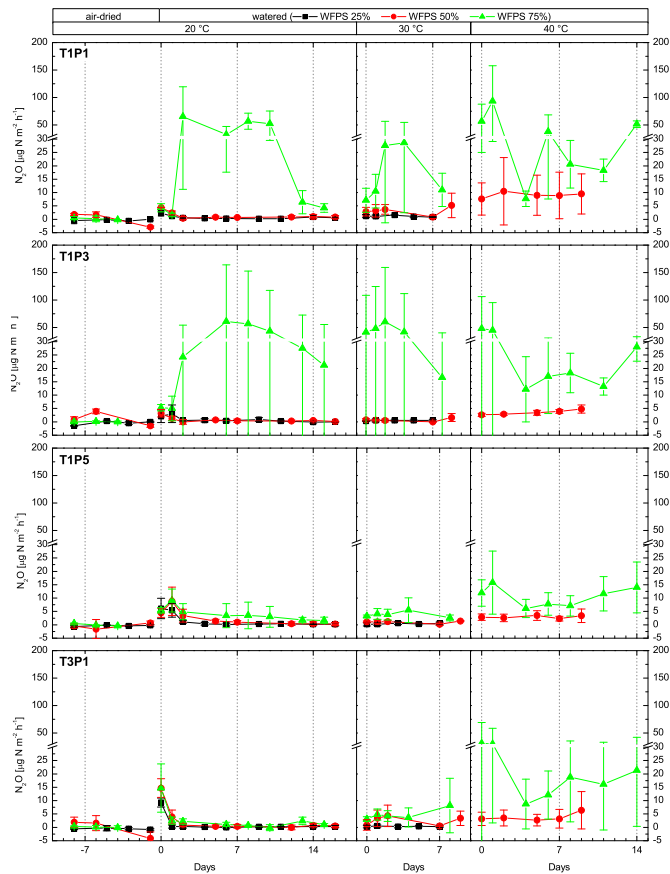
**Figure 1.** Climatic conditions at sampling sites (data: Bureau of Meteorology, Australia, <http://www.bom.gov.au>, years 1981–2010).



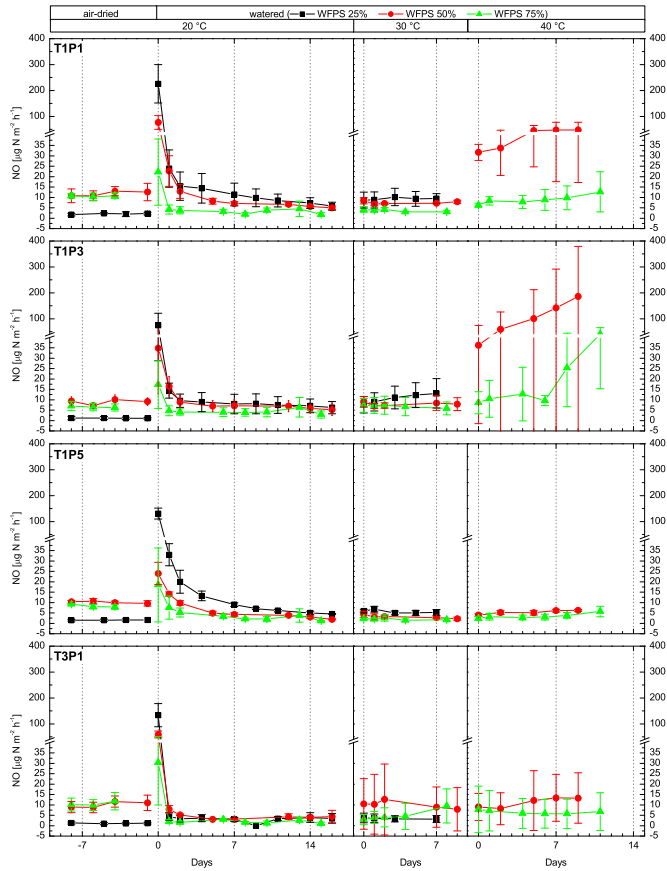
**Figure 2.** Schematic of the incubation setup. The soil moisture level of the cores was kept constant by readding water every second day, the temperature was raised stepwise from 20 °C, to 30 °C, and finally 40 °C. The incubation outlined in this figure was performed three times for separate soil cores (once for each of the three soil moisture levels; WFPS: water filled pore space).



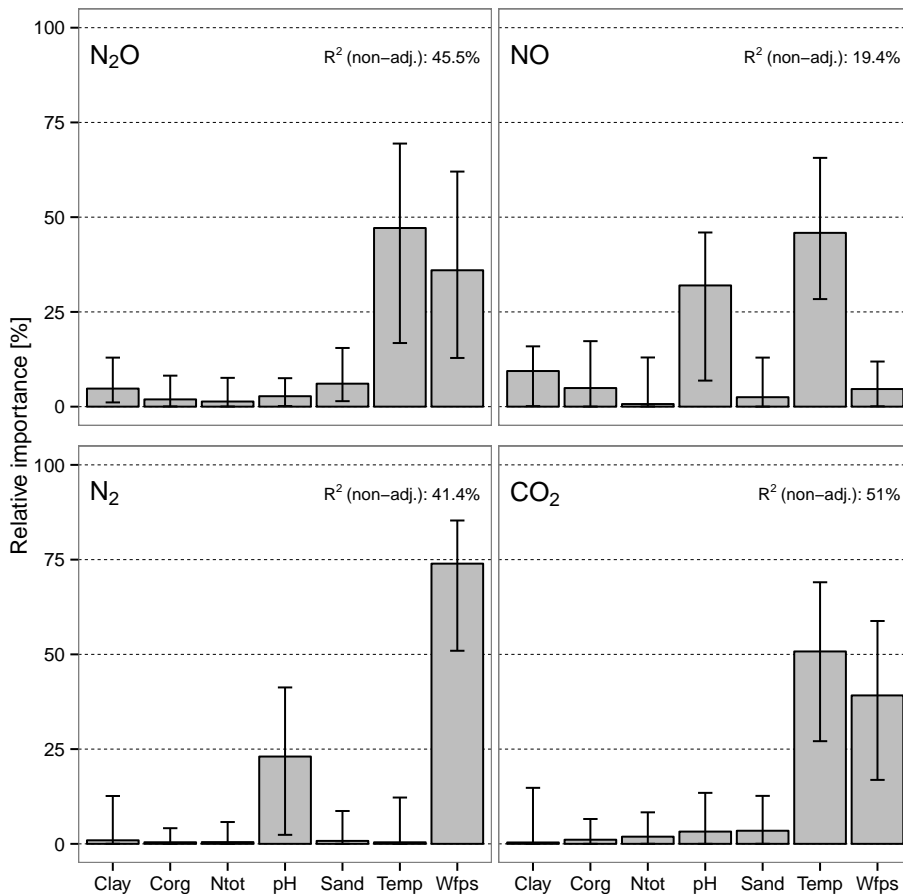
**Figure 3.** Average CO<sub>2</sub> emission per site (savanna: T1P1, T1P3, T1P5, grassland: T3P1) for three soil moisture (black: 25 % water filled pore space (WFPS), red: 50 % WFPS, green 75 % WFPS) and three temperature levels (x-axis days since incubation change/negative values indicate pre-incubation period).



**Figure 4.** Average  $N_2O$  emission per site (savanna: T1P1, T1P3, T1P5, grassland: T3P1) for three soil moisture (black: 25 % water filled pore space (WFPS), red: 50% WFPS, green 75% WFPS) and three temperature levels (x-axis days since incubation change/negative values indicate pre-incubation period).



**Figure 5.** Average NO emission per site (savanna: T1P1, T1P3, T1P5, grassland: T3P1) for three soil moisture (black: 25 % water filled pore space (WFPS), red: 50 % WFPS, green 75 % WFPS) and three temperature levels (x-axis days since incubation change/negative values indicate pre-incubation period).



**Figure 6.** Relative importance of environmental factors clay, organic carbon (Corg), total nitrogen (Ntot), sand, temperature and water filled pore space (Wfps) on  $N_2O$ , NO,  $N_2$  and  $CO_2$  emissions (based on proportional marginal variance decomposition,  $R^2$  values give total predictability of each model).