

This discussion paper is/has been under review for the journal Biogeosciences (BG).  
Please refer to the corresponding final paper in BG if available.

# Plant colonization, succession and ecosystem development on Surtsey with reference to neighbouring islands

B. Magnússon<sup>1</sup>, S. H. Magnússon<sup>1</sup>, E. Ólafsson<sup>1</sup>, and B. D. Sigurdsson<sup>2</sup>

<sup>1</sup>Icelandic Institute of Natural History, Urriðaholtsstræti 6-8, P.O. Box 125, 220 Garðabær, Iceland

<sup>2</sup>Agricultural University of Iceland, Hvanneyri, 311 Borgarnes, Iceland

Received: 31 March 2014 – Accepted: 22 May 2014 – Published: 17 June 2014

Correspondence to: B. Magnússon (borgthor@ni.is)

Published by Copernicus Publications on behalf of the European Geosciences Union.

BGD

11, 9379–9420, 2014

Plant colonization,  
succession and  
ecosystem  
development

B. Magnússon et al.

Title Page

Abstract

Introduction

Conclusions

References

Tables

Figures

◀

▶

◀

▶

Back

Close

Full Screen / Esc

Printer-friendly Version

Interactive Discussion



## Abstract

Plant colonization and succession on Surtsey volcanic island, formed in 1963, have been closely followed. In 2013, a total of 69 vascular plant species had been discovered on the island; of these 59 were present and 39 had established viable populations. Surtsey had more than twice the species of any of the comparable neighbouring islands and all their common species had established on Surtsey. The first colonizers were dispersed by sea, but after 1985 bird-dispersal became the principal pathway with the formation of a seagull colony on the island and consequent site amelioration. This allowed wind-dispersed species to establish after 1990. Since 2007 there has been a net loss of species on the island. A study of plant succession, soil formation and invertebrate communities in permanent plots on Surtsey and on two older neighbouring islands (plants and soil) has revealed that seabirds, through their transfer of nutrients from sea to land, are major drivers of development of these ecosystems. In the area impacted by seagulls dense grassland swards have developed and plant cover, species richness, diversity, plant biomass and soil carbon become significantly higher than in low-impact areas, which remained relatively barren. A similar difference was found for the invertebrate fauna. After 2000, the vegetation of the oldest part of the seagull colony became increasingly dominated by long-lived, rhizomatous grasses (*Festuca*, *Poa*, *Leymus*) with a decline in species richness and diversity. Old grasslands of the neighbouring islands Elliðaey (puffin colony, high nutrient input) and Heimaey (no seabirds, low nutrient input) contrasted sharply. The puffin grassland of Elliðaey was very dense and species-poor. Dominated by *Festuca* and *Poa*, it was very similar to the seagull grassland developing on Surtsey. The Heimaey grassland was significantly higher in species richness and diversity, and had a more even cover of dominants (*Festuca/Agrostis/Ranunculus*). We forecast that with continued erosion of Surtsey, loss of habitats and increasing impact from seabirds a lush, **species poor** grassland will develop and persist, as on the old neighbouring islands.

## Plant colonization, succession and ecosystem development

B. Magnússon et al.

Title Page

Abstract

Introduction

Conclusions

References

Tables

Figures



Back

Close

Full Screen / Esc

Printer-friendly Version

Interactive Discussion



# 1 Introduction

The frequent volcanic eruptions in Iceland cause regular disturbance and ecosystem regression (Arnalds, 2013). In more severe eruptions, existing biota and ecosystems are lost and new surfaces created; thereafter, colonization and primary succession commence. While the lava flows around Mt. Hekla in the south of Iceland have provided excellent opportunities for chronosequence studies of plant colonization and community development (Bjarnason, 1991; Cutler et al., 2008; Cutler, 2010), most comparable studies are from tropical and temperate regions.

The 1963 submarine eruption and birth of Surtsey island off the south coast of Iceland was a surprise. The volcanic origin of the Vestmannaeyjar islands was known, but the previous eruptions in the system had occurred over 5000 yr ago (Sigurðsson and Jakobsson, 2009). The Surtsey eruption, soon followed by the Heimaey eruption in 1973, set a new focus on the islands and extensive geological and biological research was initiated (Lindroth et al., 1973; Friðriksson, 1975; Jakobsson et al., 2007; Svavarsdóttir and Walker, 2009). Only a few volcanic islands have recently emerged, including Anak Krakatau (1927) in Indonesia, Tuluman Island (1953) in New Guinea, Surtsey (1963) and Motmot (1968) in Lake Wisdom on Long Island in New Guinea (Thornton, 2007). Surtsey is a crucial example because of the unbroken record of monitoring and strict protection of the island which has minimized human interference (Svavarsdóttir and Walker, 2009). The studies on Surtsey are comparable to the long-term monitoring at Mount St. Helens volcano in Washington, USA, following the eruption of 1980 (Dale et al., 2005; del Moral, 2009; del Moral and Magnússon, 2014). More recent eruptions around the world have evoked interest and new studies of their ecological effects and recovery have commenced. These include those of Kastatochi in the Aleutian Islands, which erupted in 2008 (DeGange, 2010).

The Vestmannaeyjar islands are very young on geological and evolutionary timescales. Aside from their volcanic origin they have little in common with island complexes commonly cited in island biogeography (Whittaker et al., 2008). However, the

**BGD**

11, 9379–9420, 2014

## Plant colonization, succession and ecosystem development

B. Magnússon et al.

Title Page

Abstract

Introduction

Conclusions

References

Tables

Figures



Back

Close

Full Screen / Esc

Printer-friendly Version

Interactive Discussion





## Plant colonization, succession and ecosystem development

B. Magnússon et al.

Title Page

Abstract

Introduction

Conclusions

References

Tables

Figures

◀

▶

◀

▶

Back

Close

Full Screen / Esc

Printer-friendly Version

Interactive Discussion

tephra cones were formed in explosive phases of the two main central craters. The cones were gradually transformed into denser palagonite tuff (Jakobsson et al., 2000). The southern part of Surtsey consists of lava flows from the craters. Following the eruption the rough lava was gradually filled in by drifting tephra from the craters, except for the south-easternmost part of the island where airborne dust has settled. The northern part is a low spit formed by eroded coastal sediments deposited on the leeward site. The spit is flooded by surf in extreme winter storms. Coastal erosion has taken a heavy toll of the island and by 2012 it had been reduced by half, to an area of 1.3 km<sup>2</sup>. The most extensive erosion has occurred on the southern and south-western part where high seacliffs have been cut into the lava shield (Jakobsson et al., 2007). Surtsey is still the second largest island after Heimaey. Following Surtsey in size are Elliðaey (0.46 km<sup>2</sup>) and Bjarnarey (0.32 km<sup>2</sup>) to the northeast and leeward of Heimaey. Erosion will probably leave Surtsey to resemble the unprotected neighbouring islands of Geirfuglasker, Súlasker, Geldungur and Hellisey (0.02–0.13 km<sup>2</sup>) that also lie unsheltered in the open ocean (Fig. 1).

The climate of the Vestmannaeyjar area is mild and oceanic. At the Heimaey weather station, the mean annual temperature during 1963–2012 was 5.1 °C and the mean annual precipitation 1599 mm (Icelandic Meteorological Office). Waters off the south coast of Iceland are productive and rich in marine life (Astthorsson et al., 2007) and seabirds are particularly abundant (Hilmarrsson, 2009). The Vestmannaeyjar islands are the home to large breeding populations of Atlantic puffins (*Fratercula arctica*), northern fulmars (*Fulmarus glacialis*), manx shearwater (*Puffinus puffinus*), storm petrels (*Hydrobates pelagicus*), Leach's petrels (*Oceanodroma leucorhoa*), gannets (*Morus bassanus*), kittiwakes (*Rissa tridactyla*), common guillemots (*Uria aalge*), razorbills (*Alca torda*) and black guillemots (*Cepphus grylle*). The seabirds impact the vegetation with their nutrient transfer from sea to land, burrowing, nest building and other activities. A few species of heathland birds also breed on the islands but their density is low (Hilmarrsson, 2009).

The vascular flora of the Vestmannaeyjar islands contains some 160 species and **all but few** occur on Heimaey. The other old islands harbour only 2–28 species, corresponding to their size. The most diverse vegetation is also found on Heimaey, which has beach, heathland, herb slope, dry meadow, seabird grassland and coastal cliff communities. On the other islands lush seabird grasslands and cliff communities are the main vegetation types. The dominants of the grasslands are the rhizomatous grasses *Festuca richardsonii* ( $\approx$  *F. rubra*) and *Poa pratensis*. Among common species of the cliffs are *Cochlearia officinalis*, *Puccinellia distans* and *Armeria maritima* (Friðriksson and Johnsen, 1967; Friðriksson, 1975).

Heimaey has been impacted by human inhabitation and livestock grazing since the 9th century. The larger surrounding islands and some of the smaller have also been grazed by sheep since early times (Eyjólfsson, 2009).

## 2.2 Plant colonization and survival on Surtsey

Surtsey has been studied by biologists annually since 1964. During each visit all portions of the island are thoroughly searched to update survival and colonization of vascular species. This provides an unbroken and unparalleled record of plant colonization from 1965, when the first plant was found on the island, to the present. Exact locations of first colonists are known, as are their probable routes of dispersal, propagation and spread of survivors (Friðriksson, 1975, 2000; Magnússon et al., 2009). Separate studies of lichen (Kristinsson and Heiðmarsson, 2009) and bryophyte (Magnússon and Friðriksson, 1974; Ingimundardóttir et al., 2014) colonization were also conducted.

## 2.3 Study in permanent plots

Plant succession has been studied in permanent plots on Surtsey since 1990 when the first plots were established. The location of the plots was chosen subjectively with respect to substrate type and influence of seagulls on vegetation development on the **island** (Magnússon et al., 1996; Magnússon and Magnússon, 2000). The plots are

BGD

11, 9379–9420, 2014

## Plant colonization, succession and ecosystem development

B. Magnússon et al.

Title Page

Abstract

Introduction

Conclusions

References

Tables

Figures

⏪

⏩

◀

▶

Back

Close

Full Screen / Esc

Printer-friendly Version

Interactive Discussion



## Plant colonization, succession and ecosystem development

B. Magnússon et al.

Title Page

Abstract

Introduction

Conclusions

References

Tables

Figures

◀

▶

◀

▶

Back

Close

Full Screen / Esc

Printer-friendly Version

Interactive Discussion



sampled in alternate years. A few plots have been abandoned and new ones established due to loss to erosion or revision of methods (see Magnússon et al., 2009). In 2012 there were 25 plots operational on Surtsey (Fig. 2). In 2013 the study was extended to two of the older volcanic islands of the archipelago, Elliðaey and Heimaey (Fig. 1). Permanent plots, identical to the Surtsey plots, were established on each island and sampled in the same way in the middle of July. The four Elliðaey plots were set up within puffin colonies with high nutrient inputs from sea to land (Table 1), where soil depth was > 1 m on a south facing palagonite tuff slope (one plot) and north or south facing lava cinder crater slopes (three plots) dated from 5000–6000 years ago (Sigurðsson and Jakobsson, 2009). Similarly, four plots were set up on Heimaey, on west (two) and north (two) facing palagonite tuff slopes with > 1 m soil depth in a small enclosed valley on the southern part of the island (Fig. 1). The eruption in which the valley was created also dates from 5000–6000 years ago. Since the valley is not open out to the ocean it has probably never been a seabird breeding site and thus it was not expected to be impacted by high nutrient input from the seabirds as are the Elliðaey plots (Table 1).

### 2.4 Vegetation, soil and plant biomass

The permanent plots are 10 m × 10 m in size, and were sampled with line-transects (Magnússon et al., 2009). Five parallel 10 m transects were laid across each plot, at 1, 3, 5, 7 and 9 m from their edge. Plant cover was determined by line-intercept method, all vascular plants were recorded separately for each meter along the line, as well as total cover of mosses and lichens. Additional species within the plots not intercepted by the lines were also recorded and given the lowest possible intercept value of 1 cm.

Soil was sampled within the Surtsey plots in 1998 and again in 2008 (Magnússon et al., 2009). In the latter sampling, four random samples (7 cm dia × 10 cm depth) were taken in each plot and mixed for a composite sample. In the laboratory the samples were sieved through a 2 mm mesh for determination of pH, total organic carbon (C) and nitrogen (N), carried out by the Centre of Chemical Analyses (Efnagreiningar

Keldnaholti), ICETEC, Reykjavik, Iceland. Details are further described in Magnússon et al. (2009). Soil samples of plots in Elliðaey and Heimaey were sampled to 10 cm depth in three locations per plot. The samples were sieved through 2 mm, ground to powder and total C and N analysed by dry combustion with an NC2100 C/N analyzer (Carlo Erba Instruments, Italy) at Univ. of Antwerp, Belgium. Only the C data from Surtsey 2008 and Elliðaey and Heimaey in 2013 is dealt with here.

Plant biomass was harvested on the Surtsey plots every fourth year, since 1999 (Magnússon et al., 2009), the last sampling occurring in 2011. The sampling was destructive and carried out in a 10 m × 10 m area adjacent to each permanent plot. Four samples were harvested at random coordinates, the vegetation was cut at ground level along a 2 m line, using electric grass clippers with a 7.5 or 9.5 cm wide cut. All vegetation was collected. The samples were dried at 60 °C to constant oven dry weight.

## 2.5 Density of seabird nests

Since 2003 density of seabird nests (mainly seagulls) around the permanent plots on Surtsey has been determined annually. A 1000 m<sup>2</sup> circular plot with a centre in the middle of a permanent plot was inspected and nest bowls occupied in the current season counted. The lesser black-backed gull (*Larus fuscus*), great black-backed gull (*L. marinus*) and herring gull (*L. argentus*) breed in substantial numbers upon the island. A few fulmar nests (*Fulmarus glacialis*) have also been encountered in the surveys and they were included (Magnússon et al., 2009). The plots on Elliðaey were within dense breeding colonies of puffins (*Fratercula arctica*). Nesting density was estimated according to methods of Hansen et al. (2011). The number of puffin burrows was counted in four 4 m × 4 m randomly placed subplots within or by each permanent vegetation plot. Average burrow occupancy rate of 66 % for Elliðaey in 2013 (E. S. Hansen, personal communication, 2013) was used to calculate nesting density.

BGD

11, 9379–9420, 2014

Plant colonization,  
succession and  
ecosystem  
development

B. Magnússon et al.

Title Page

Abstract

Introduction

Conclusions

References

Tables

Figures

⏪

⏩

◀

▶

Back

Close

Full Screen / Esc

Printer-friendly Version

Interactive Discussion





## 2.6 Invertebrates on Surtsey

Invertebrate studies started on Surtsey in 1965 and were continued annually until 1984. Sampling was sporadic from 1985 to 2002 after which it recommenced and became an integral part of the biological studies. Sampling included pitfall trapping, netting and direct picking for different taxa. Most of the pitfall trapping was conducted in the permanent vegetation plots to relate the invertebrate communities to the vegetation and plant succession directly. In this paper, we used data of invertebrate catches in pitfall traps in the permanent plots on Surtsey from 2002 to 2008 (Ólafsson and Ingimarsdóttir, 2009).

## 2.7 Data analysis

Vegetation data (vascular plants only) sampled in the permanent plots in 2012 (Surtsey) and 2013 (Heimaey and Elliðaey) was analysed with detrended correspondence analysis (DCA; indirect ordination) and two-way indicator species analysis (TWINSpan; classification, Hill, 1979a, b). The cover data was transformed ( $\log+1$ ) prior to analysis. In the ordination rare species were downweighted. In the classification cut levels were set to 0, 0.05, 0.1, 0.2, 0.5, 1.0 and 1.5 after data inspection. The Shannon index of species diversity was calculated for all plots. Multivariate analyses were conducted with PC-ORD 6 (McCune and Mefford, 2006). One way ANOVA on log-transformed values was used to determine significance of parameters for plots outside and inside the gull colony on Surtsey (JMP 6.0 package; SAS Inst., 2006). The variables were seabird nesting density, plant cover, species richness, plant diversity, plant biomass, soil carbon, invertebrate species richness, and invertebrate and Acari/Collembola catches. The same test was used to compare these characteristics of the TWINSpan vegetation classes: plant cover, species richness, plant diversity, plant biomass and soil carbon.

**BGD**

11, 9379–9420, 2014

### Plant colonization, succession and ecosystem development

B. Magnússon et al.

Title Page

Abstract

Introduction

Conclusions

References

Tables

Figures

◀

▶

◀

▶

Back

Close

Full Screen / Esc

Printer-friendly Version

Interactive Discussion



### 3 Results

#### 3.1 Plant colonization on Surtsey

The first species to colonize Surtsey in 1965 was the sea rocket (*Cakile arctica*), dispersed to the island by sea currents. The most recent colonizer was a wind dispersed moonwort (*Botrychium lunaria*) first found in 2011. The total number of plants that have established on the island at any time is 69 species. In the 2013 expedition to the island 59 of these were found (Fig. 3), but only 39 species appeared to have viable populations (Appendix A), defined as a population that has expanded or which occurs in at least five locations. The plant colonization curve for the island over the first 50 years can be divided into four main periods (Fig. 3). The initial invasion of plants occurred during the first decade. These were mainly shore plants (Fig. 4) resulting from ocean dispersal and establishing on the infertile and sandy volcanic substrate of the island (e.g. *Cakile arctica*, *Leymus arenarius*, *Honckenya peploides*, *Mertensia maritima*). During this period the first bird-dispersed (*Cochlearia officinalis*) and wind-dispersed species (*Cystopteris fragilis*) also colonized the island (Fig. 4). Most of the species were able to survive on the pristine island and start propagation. In the second period, approx. 1975–1985, colonization slowed and survival of newcomers was considerably lower than previously (Fig. 3). They were less well adapted to the harsh conditions than the pioneers. Only two of the species (*Cerastium fontanum* and *Rumex acetosella*), colonizing during this period, gained roothold and established. In the third period, approx. 1986–2007, a second wave of plant colonization occurred and survival of plants improved greatly. This was triggered by the establishment of a seagull breeding colony on the southern part of the island. The colony, which soon grew to 200–300 breeding pairs, became the locus of plant colonization. The gulls not only improved the nutrient status of the soil and but also acted as agents of seed dispersal. Plants with higher nutrient demands now started to flourish and expand (e.g. *Cochlearia officinalis*, *Stellaria media*, *Sagina procumbens*, *Matricaria maritima*, *Cerastium fontanum*, *Festuca richardsonii*, *Poa pratensis*, *P. annua*, *Ranunculus acris*). Several years into this period, there was

Title Page

Abstract

Introduction

Conclusions

References

Tables

Figures



Back

Close

Full Screen / Esc

Printer-friendly Version

Interactive Discussion



a pronounced increase in colonization of wind dispersed species (Fig. 4). The soil amelioration brought about by the gulls opened a window for light-seeded (or sporophytic) species with limited seed reserves (e.g. *Taraxacum* spp., *Leontodon autumnalis*, *Salix herbacea*, *S. phyllicifolia*, *S. lantana*, *Platanthera hyperborea*, *Botrychium lunaria*) to establish. In 2007 the number of species on the island peaked at 64 (Fig. 3). In the last period, 2008–2013, Surtsey suffered a net loss of plant species. Only one new colonizer was recorded but all the lost species were very rare.

### 3.2 Effects of seagulls on development on Surtsey

During 2003–2012 gull nests were encountered in ten of the permanent study plots, nine within the main breeding area (Table 2). The total number of nests varied from 19–50. The average number of nests in the ten year period was 3.9 within the breeding area. In plots outside it only one nest was ever encountered, leading to an average of 0.01 (Table 2).

In 2012 there were 22 plant species recorded within the 25 permanent plots (Appendix A). Species with the highest relative frequency were *Honckenya peploides*, *Sagina procumbens*, *Leymus arenarius* and *Cerastium fontanum*, which occurred in over 50% of the plots (Fig. 5). The most notable changes were the increases of *Aradopsis petraea* and *Silene uniflora*, both of which established late but had reached a spreading phase. *L. arenarius* and *C. fontanum* had also increased considerably. *Cochlearia officinalis* had lost ground in 2012 and was only found in half of the plots it was recorded in in 2008 (Fig. 5). Its main distribution was near the cliffs on the southern lava within the seabird colony where grass swards and competition was increasing.

There was a great variation in the development of the plant cover, species richness and diversity in the permanent plots in 2012. This was reflected in the plant biomass and carbon status of soil (Table 2), from earlier sampling. Where breeding seabirds were absent or their impact low, the vegetation remained poorly developed. Average plant cover of plots outside the seabird colony in 2012 was 7.1% (Table 2;), but most of the plots had < 5% cover. The cover was highest in the two plots with well de-

BGD

11, 9379–9420, 2014

## Plant colonization, succession and ecosystem development

B. Magnússon et al.

Title Page

Abstract

Introduction

Conclusions

References

Tables

Figures

⏪

⏩

◀

▶

Back

Close

Full Screen / Esc

Printer-friendly Version

Interactive Discussion



## Plant colonization, succession and ecosystem development

B. Magnússon et al.

Title Page

Abstract

Introduction

Conclusions

References

Tables

Figures

◀

▶

◀

▶

Back

Close

Full Screen / Esc

Printer-friendly Version

Interactive Discussion



veloped shore community on the northern spit (Fig. 2). Average species richness of plots outside the gull colony was 4.4 (range 1–9). The most common species of were *Honckenya peploides*, *Sagina procumbens*, *Leymus arenarius*, *Cerastium fontanum*, *Arabidopsis petraea*, *Poa annua* and *Silene uniflora*. *H. peploides* had a mean cover of 5.0 % and was the only species which had reached over 1 % cover outside the gull colony (data not shown). In the plots within the gull colony the average plant cover was 90.3 % (Table 2). In four of the plots the canopy had closed and layering of vegetation occurred. Average species richness of colony plots was 7.7 (range 7–12) in 2012. The most common species of the gull colony were *Poa pratensis*, *Festuca richardsonii*, *Cerastium fontanum*, *Honckenya peploides*, *Leymus arenarius*, *Sagina procumbens*, *Matricaria maritima*, *Puccinellis distans*, *Stellaria media*, *Taraxacum* spp., *Cochlearia officinalis* and *Poa annua*. *P. pratensis* and *F. richardsonii* had gained the highest mean cover of 33.3 % and 16.9 % respectively. Six other species had reached over 1 % mean cover within the seabird colony in 2012 (data not shown). Average plant species diversity (Shannon) in plots outside the seabird colony in 2012 was 0.5 but 1.0 in plots within the colony (Table 2).

In 2011, mean plant biomass in plots outside the gull colony was 47 g dwt m<sup>-2</sup>. Biomass was highest in the northern spit plots, 29 and 30, which had dense cover of *H. peploides*. Within the colony, there was an average of 221 g dwt m<sup>-2</sup> (Table 2). The peak biomass was in plots with dense grass swards of *L. arenarius* and *P. pratensis* (plots 1, 3 and 4). Topsoil in the permanent plots outside the gull colony in 2008 had average total carbon of 0.05 %, but 1.84 % inside the colony (Table 2).

The invertebrate communities determined from the pitfall traps in the gull colony during 2002–2006 were richer in species and density than were the barren areas (Table 2). For the invertebrate groups that were identified to the species level, there were 28.3 species found on the average within the gull colony plots, while only half of that in the plots outside the colony (Table 2). Total catches per day for these groups were however similar in the two areas (Table 2). Mites (Acari) and springtails (Collembola), which were dominant in the catches of the pitfall traps were treated separately and joined into

one group (Table 2). They were **however** not identified to a species level. In the sheer number of these animals there was a fivefold and significant difference between the two areas. In plots outside the gull colony the average catch was 20.3 animals per day which compares to 108.4 animals per day within the colony.

The gradual increase and expansion of dense vegetation of the gull colony has been monitored using aerial photographs and satellite images taken regularly of the island. The first signs of vegetation were visible on an aerial photo from 1988, approximately three years after the first nesting of the gulls. At that time the **area was** only 0.03 ha in area. By 1998 it had increased to 6.6 ha and in 2012 the area had reached 12.1 ha or over 9 % of the island (Fig. 6).

### 3.3 Comparison of vegetation development on Surtsey with neighbouring islands

Multivariate classification and ordination was used to analyse resemblance of the young, developing vegetation of Surtsey in 2012 to the older grasslands of Heimaey and Elliðaey islands sampled in 2013. Four groups were formed by TWINSpan (Fig. 7). A comparison of the groups showed their floristic, soils and density of seabird density differences (Table 3). The Heimaey grassland (group I), which lacks seabirds, had a moderate vascular plant cover, but it was not significantly different from the Elliðaey and Surtsey seabird plots (groups II and III; Table 3). The Heimaey grassland had far larger species richness and diversity. The top 10 cm soil of the Heimaey plots was relatively rich in carbon and similar to the Elliðaey and Surtsey seabird grasslands (Table 3). In the **species rich** Heimaey grassland there was an average of 18 species in each plot (Table 3). The dominant species in the cover were *Festuca richardsonii* (20.8%), *Agrostis capillaris* (16.3%), *Ranunculus acris* (11.5%) and *Anthoxanthum odoratum* (8.2%).

The dense seabird grassland of Elliðaey and Surtsey (group II) was highest in plant cover but had low species richness and diversity. The average C content of soil was highest in this group (Table 3). On the average six species were found in the plots



## Plant colonization, succession and ecosystem development

B. Magnússon et al.

Title Page

Abstract

Introduction

Conclusions

References

Tables

Figures



Back

Close

Full Screen / Esc

Printer-friendly Version

Interactive Discussion



a dense and distinct cluster of points on the left of the diagram, underlining the difference in vegetation composition from the Elliðaey and Surtsey plots. The Elliðaey plots were also in a dense cluster, as expected, but Surtsey lava plots (6 and 7) with the best developed *F. richardsonii*/*P. pratensis* swards were also here (Figs. 9 and 10). Furthest to the right and at the top of the diagram were Surtsey plots that were outside the gull colony and with poorly developed vegetation (Fig. 8). On the right was a cluster of plots with mainly *H. peploides*, which develop into *P. pratensis*/*L. arenarius* grassland under the impact of seabirds and increased nutrient inputs, as shown in Surtsey plots 1, 3 and 4 (Fig. 9). At the top were barren lava plots with *Sagina procubens* and *Puccinellia distans* as pioneers, which develop towards *F. richardsonii*/*P. pratensis* grassland under increased nutrient inputs. The ordination showed that as the succession progressed, under the influence of the seabirds, the vegetation of the sand and lava areas became more similar in composition than at the pioneer stages (Fig. 8).

## 4 Discussion

### 4.1 Plant colonization on Surtsey

The record of plant colonization of Surtsey and the probable routes of dispersal revealed, show how the main vectors of immigration change during the ecosystem development on the island. Of the 69 plant species found on the island since 1965, about 75 % have been dispersed by birds, 15 % by wind and 10 % by the sea. During the first years shore plants dispersed by the sea were the main pioneers on the island. These plants had relatively large seeds, rich in reserves, enabling them to establish on nutrient poor, sandy substrates. In the case of Surtsey the distance from the source on the nearby islands and the mainland is only a few to tens of kilometers so the chances of floating seeds ending upon the shores of Surtsey were high. New species dispersed by the sea have not been found on Surtsey after 1977 (Fig. 4). However two of the species





ishment (Wood and del Moral, 1987). Among the wind-borne species entering Surtsey after 1990 are three species of willows (*Salix*), an orchid (*Platanthera hyperborea*) and a **small fern** (*Botrychium lunaria*) which either grow in association with or require mycorrhizal fungi for germination and establishment (Schmid and Oberwinkler, 1994; Chadde and Kudray, 2001; Thornton, 1996; Eyjólfsdóttir, 2009). Hence, the late establishment of these species may partly have been caused by a lack of the fungi in the early years. The shifting pattern of dispersal routes and their relative importance during the first 50 years of colonization on Surtsey has some similarities to the plant dispersal spectra obtained from other volcanic islands, e.g. Krakatau (Whittaker et al., 1992; Thornton, 1996), Anak Krakatau, (Partomihardjo et al., 1992) and Long Island volcano (Harrison et al., 2001; Thornton et al., 2001). They show importance of sea-dispersal at the early stages but animal- and wind-dispersal patterns are more variable.

The halt in colonization of new species and a net loss of species on Surtsey after 2007 may indicate that competition is increasing in the community with denser swards and that most of the likely colonists have already arrived. A comparison of the flora of Surtsey with the other outer islands of the Vestmannaeyjar archipelago (Friðriksson and Johnsen, 1967) shows that in the 50 years all the common species of the other islands have been dispersed and established on Surtsey and that most of them have formed viable populations (Appendix A). The flora of Surtsey is by far the richest of any of the islands, explicable by its larger size, greater habitat diversity, more open swards and the absence of sheep grazing. Many of the plants confined to Surtsey are species of open shores, sands and tephra plains that no longer occur on the older islands.

## 4.2 Effects of seagulls on development on Surtsey

This study shows that the seagulls have had pronounced effects on the vegetation and soil development. This was also reflected in the invertebrate fauna. The birds have thus jumpstarted the ecosystem buildup (Sekercioglu, 2006). At the nesting sites the birds deposit faeces and regurgitate pellets, fish and marine invertebrates are spilled on the ground, feathers are shed and corpses of birds that die decompose. Of greatest im-

BGD

11, 9379–9420, 2014

## Plant colonization, succession and ecosystem development

B. Magnússon et al.

Title Page

Abstract

Introduction

Conclusions

References

Tables

Figures

◀

▶

◀

▶

Back

Close

Full Screen / Esc

Printer-friendly Version

Interactive Discussion



## Plant colonization, succession and ecosystem development

B. Magnússon et al.

Title Page

Abstract

Introduction

Conclusions

References

Tables

Figures



Back

Close

Full Screen / Esc

Printer-friendly Version

Interactive Discussion



portance for the soil enrichment and vegetation development are the faeces that have a relatively high content of nitrogen, phosphorus, potassium and minerals (Sobey and Kenworthy, 1979; Bancroft et al., 2005), which are of great importance in primary succession (Walker and del Moral, 2003). In an earlier account (Magnússon et al., 2009) we estimated from nesting density and other studies (Hahn et al., 2007) that annual nutrient inputs from gulls in the Surtsey colony were about  $25 \text{ kg N ha}^{-1}$ . A new study of the soil development on the island **however** indicates that the average annual input within the colony is  $47 \text{ kg N ha}^{-1}$ , while the background atmospheric N deposition is only ca  $1.2 \text{ kg N ha}^{-1}$  (Leblans et al., 2014). The nutrient enrichment of soil from the seagulls on Surtsey has had cascading effects on plant populations, invertebrates and landbird colonization on the island (Magnússon et al., 2009; Ólafsson and Ingimarsdóttir, 2009; Petersen, 2009), similar to the lupins on Mount St. Helens (del Moral and Rozzell, 2005; del Moral, 2009; del Moral and Magnússon, 2014). These observed patterns were extended in the present study.

In areas of the island outside the gull colony the plant succession and soil development has remained slow (Magnússon et al., 2009). A gradual buildup has occurred (Stefánsdóttir et al., 2014) but rates of change are not comparable to the gull colony area (del Moral and Magnússon, 2014; Leblans et al., 2014). The longterm monitoring of vegetation in permanent plots on Surtsey showed that it was mainly ruderal species (sensu Grime et al., 1988) that initially responded to the increased nutrient inputs from the gulls leading to an abrupt increase in species richness and diversity of the vegetation (Magnússon et al., 2009). With further development these species have **however** lost ground to more competitive, rhizomatous grass species of greater longevity that have become dominant in the vegetation in the oldest part of the gull colony. A decline in species richness and diversity has occurred during this development.

The invertebrate fauna of areas outside the gull colony was characterized by low species richness and catches of animals. Dipterans were the majority of species caught, **however** most of them derived from the gull colony area (Ólafsson and Ingimarsdóttir, 2009). Within the gull colony the invertebrate fauna showed a considerable

change in ecosystem structure and function. The high catches of mites (Acari) and springtails (Collembola) are indicative of denser vegetation and greater decomposition activity (Swift et al., 1979). These animals are an important source food for larger invertebrates, such as staphylinid beetles and linyphiid spiders which were abundant in the gull colony (Ólafsson and Ingimarsdóttir, 2009). In the dense vegetation plant feeding invertebrates had colonized and started to thrive, such as root feeding dipterans, saprophagous dipterans and plant feeding lepidopterans. Several species of parasitic hymenopterans had also become a part of the invertebrate community of the gull colony, but their main hosts are dipteran and lepidopteran larvae and aphids (Ólafsson and Ingimarsdóttir, 2009). Colonization of some of the bird species on Surtsey was dependant on the developing vegetation and invertebrate fauna of the gull colony. In 1996, ten years after the formation of the colony, **snowbunting (*Plectrophenax nivalis*)** became the first landbird to breed on the island (Magnússon and Ólafsson, 2003). At that time the dense vegetation of the gull colony had extended to ca. 5 ha. After 2000 two other passerines, the **white** wagtail (*Motacilla alba*) and the meadow pipit (*Anthus pratensis*), also started breeding (Magnússon et al., 2009; Petersen, 2009). These three passerine species are dependant on insects for raising their young and their main source of food is within the gull colony (Ólafsson and Ingimarsdóttir, 2009). Studies of invertebrate colonization of young volcanic islands and nunataks have shown that at the early stages allochthonous inputs or littoral debris are important sources for pioneering communities consisting of heterotrophic scavenging detritivores and predators (Edwards and Thornton, 2001; Sikes and Slowik, 2010; Ingimarsdóttir et al., 2013), not dependant on colonization by autotrophs (Hodkinson et al., 2002). This was also the case in the early years on Surtsey (Lindroth et al., 1973). Plant colonization and vegetation development is followed by further invertebrate colonization and diversification. **How-ever** it is characterised by relatively generalist species as colonization by specialists of later successional vegetation stages is harder (New and Thornton, 1992) and occurs on a different time scale.

**Plant colonization,  
succession and  
ecosystem  
development**

B. Magnússon et al.

Title Page

Abstract

Introduction

Conclusions

References

Tables

Figures

◀

▶

◀

▶

Back

Close

Full Screen / Esc

Printer-friendly Version

Interactive Discussion



### 4.3 Vegetation development on Surtsey in comparison to neighbouring islands

The vegetation of the older Vestmannaeyjar islands (> 5000 yr old) gives an insight into what will be the outcome of long-term succession on Surtsey. Although the grassland sites sampled on Heimaey and Elliðaey in 2013 are small and do not represent all the different conditions and plant communities of the islands (Friðriksson and Johnsen, 1967; Friðriksson et al., 1972), they do provide a meaningful **comparison**. The best developed grassland plots on Surtsey showed a strong affinity with the plots sampled in the puffin colonies on Elliðaey, which were also very **species poor**, of low diversity and had *Festuca richardsonii* and *Poa pratensis* as dominant species. The high breeding density of the puffins indicated that nutrient input from the seabirds on Elliðaey was several times higher than in the gull colony on Surtsey.

All the outer islands of the Vestmannaeyjar islands are impacted by seabirds and receive external nutrient inputs. Their vegetation has a greater resemblance with the puffin colonies of Elliðaey than the Heimaey grassland studied (Friðriksson and Johnsen, 1967; Friðriksson et al., 1972). Our results showed that the Elliðaey puffin colonies had by far the richest soils in carbon, as well as nitrogen (N. Leblans, personal communication, 2014). The Heimaey grassland sampled, which has developed under limited nutrient input from seabirds, had, by contrast, high species richness and diversity in comparison to the Elliðaey/Surtsey seabird grassland. A study of vegetation, seabirds and the impact of introduced foxes on islands in the sub-arctic Aleutian archipelago has demonstrated that at high seabird densities plant communities are graminoid dominated (Croll et al., 2005). On fox-infested islands with reduced seabird populations abundance of grasses declined and the vegetation developed towards tundra, due to reduced marine nutrient inputs (Croll et al., 2005). Grasslands on fertile soils with high availability of nitrogen and phosphorus are known to be **species poor** with low plant diversity (Janssens et al., 1998). In their experimental study of a *Festuca rubra* grassland in central Europe, Pavlu et al. (2012), found that at high doses of N and under no P and K limitations, a substantial decline in species richness occurred. The trends observed

BGD

11, 9379–9420, 2014

## Plant colonization, succession and ecosystem development

B. Magnússon et al.

Title Page

Abstract

Introduction

Conclusions

References

Tables

Figures

◀

▶

◀

▶

Back

Close

Full Screen / Esc

Printer-friendly Version

Interactive Discussion



in the grassland developing on Surtsey and the contrasts between the grasslands of Elliðaey and Heimaey under different seabird impacts are similar to the findings of these grassland studies.

## 5 Conclusions

5 Over the the first 50 years, seagulls were the main agents of ecosystem development on Surtsey through seed-dispersal to the island and nutrient transfer from sea to land. In areas impacted by the gulls, productive, species-poor grassland has developed on relatively rich soils, high in invertebrate abundance and with breeding insectivorous birds. Continued breeding of the seagulls, colonization of puffins and other seabirds will  
10 lead to further development of the grassland. Due to erosion the island will eventually loose its lower sandy and lava habitats with the associated flora and fauna. The bird colonies will concentrate on the upper part of the island where grassland will develop as on the older islands.

15 *Acknowledgements.* The Surtsey Research Society has provided logistic support for the study and transport to the island was in the hands of the Icelandic Coastguard. The project was initially funded by the Icelandic Research Council (grant 944180094), Toyota Iceland supported biological research of IINH on the island in 2007 and 2008. Anette Th. Meier and Sigmar Metúsalemsson assisted with diagrams and maps, Járngeður Grétarsdóttir and Hafdís Hanna Ægisdóttir sampled vegetation and Niki Leblans soils and analysed carbon of plots on Elliðaey  
20 and Heimaey, Marinó Sigursteinsson, Ingvar Atli Sigurðsson, Erpur Snær Hansen and Páll Marvin Jónsson assisted with logistics and transport during the Elliðaey expeditions, several others have participated on Surtsey through the years, not least Sturla Friðriksson who lead ecological research on the island for decades and, Roger del Moral made valuable comments and improvements on the manuscript.

BGD

11, 9379–9420, 2014

## Plant colonization, succession and ecosystem development

B. Magnússon et al.

Title Page

Abstract

Introduction

Conclusions

References

Tables

Figures

◀

▶

◀

▶

Back

Close

Full Screen / Esc

Printer-friendly Version

Interactive Discussion



## References

- Abe, T.: Colonization of Nishino-shima Island by plant and arthropods 31 years after eruption, *Pac. Sci.*, 60, 355–365, 2006.
- Aoyama, Y., Kawakami, K., and Chiba, S.: Seabirds as adhesive seed dispersers of alien and native plants in the oceanic Ogasawara Islands, Japan, *Biodivers. Conserv.*, 21, 2787–2801, 2012.
- Arnalds, O.: The influence of volcanic tephra (ash) on ecosystems, *Adv. Agron.*, 121, 332–380, 2013.
- Astthorsson, O. S., Gislason, A., and Jonsson, S.: Climate variability and the Icelandic marine ecosystem, *Deep-Sea Res.*, 54, 2456–2477, 2007.
- Bancroft, W. J., Garkaklis, M. J., and Roberts, J. D.: Burrow building in seabird colonies: a soil-forming process in island ecosystems, *Pedobiologia*, 49, 149–165, 2005.
- Bjarnason, Á. H.: Vegetation on lava fields in the Hekla area, Iceland, *Acta Phytogeogr. Suec.*, 77, Uppsala, 110 pp., 1991.
- Calvino-Cancela, M.: Gulls (Laridae) as frugivores and seed dispersers, *Plant Ecol.*, 212, 1149–1157, 2011.
- Calvino-Cancela, M. and Martin-Herrero, J.: Effectiveness of a varied assemblage of seed dispersers of a fleshy-fruited plant, *Ecology*, 90, 3503–3515, 2009.
- Chadde, S. and Kudray, G.: Conservation Assessment for *Botrychium lunaria* (Common Moonwort), USDA Forest Service, Eastern Region, 38 pp., 2001.
- Croll, D. A., Maron, J. L., Estes, J. A., Danner, E. M., and Byrd, G. V.: Introduced predators transform subarctic islands from grassland to tundra, *Science*, 307, 1959–1961, 2005.
- Cutler, N.: Long-term primary succession: a comparison of non-spatial and spatially explicit inferential techniques, *Plant Ecol.*, 208, 123–136, 2010.
- Cutler, N. A., Belyea, L. R., and Dugmore, A. J.: Spatial patterns of microsite colonization on two young lava flows on Mount Hekla, Iceland, *J. Veg. Sci.*, 19, 277–286, 2008.
- Dale, V. H., Swanson, F. J., and Crisafulli, C. M.: Disturbance, survival, and succession: understanding ecological responses to the 1980 eruption of Mount St. Helens, in: *Ecological Responses to the 1980 Eruption of Mount St. Helens*, edited by: Dale, V. H., Swanson, F. J., and Crisafulli, C. M., Springer, 3–11, 2005.

BGD

11, 9379–9420, 2014

### Plant colonization, succession and ecosystem development

B. Magnússon et al.

Title Page

Abstract

Introduction

Conclusions

References

Tables

Figures

◀

▶

◀

▶

Back

Close

Full Screen / Esc

Printer-friendly Version

Interactive Discussion





## Plant colonization, succession and ecosystem development

B. Magnússon et al.

Title Page

Abstract

Introduction

Conclusions

References

Tables

Figures



Back

Close

Full Screen / Esc

Printer-friendly Version

Interactive Discussion



- Fríðriksson, S., Bjarnason, Á. H., and Sveinbjörnsson, B.: Vascular plants in Surtsey 1969, Surtsey Res. Progr. Rep., VI,, 30–32, 1972.
- Fríðriksson, S., Sveinbjörnsson, B., and Magnússon, S.: On the Vegetation of Heimaey, Iceland, II. Surtsey Res. Prog. Rep. VI, 36–53, 1972.
- 5 Götmark, F.: Coloniality in five *Larus* gulls: a comparative study, *Ornis Scand.*, 13, 211–224, 1982.
- Grime, J. P., Hodgson, J. G., and Hunt, R.: *Comparative Plant Ecology*, Unwin Hyman, London, 742 pp., 1988.
- Hahn, S., Bauer, S., and Klaassen, M.: Estimating the contribution of carnivorous water birds to nutrient loading in freshwater habitats, *Freshwater Biol.*, 52, 2421–2433, 2007.
- 10 Hansen, E. S., Sigursteinsson, M., and Garðarsson, A.: Lundatal Vestmannaeyja (The breeding population size of Atlantic Puffin in Vestmannaeyjar, S-Iceland), *Bliki*, 31, 15–24, 2009.
- Harrison, R. D., Banka, R. Thornton, I. W. B., and Shaahan, M.: Colonization of an island volcano, Long Island, Papua New Guinea, and an emergent island, Motmot, in its caldera lake, II. The vascular flora, *J. Biogeogr.*, 28, 1311–1337, 2001.
- 15 Hill, M. O.: DECORANA – a FORTRAN Program for Detrended Correspondence Analysis and Reciprocal Averaging, *Ecology and Systematics*, Cornell Univ., Ithaca, New York, 52 pp., 1979a.
- Hill, M. O.: TWINSPAN – a FORTRAN Program for Arranging Multivariate Data in Ordered Two-way Table by Classification of Individuals and Attributes, *Ecology and Systematics*, Cornell University, Ithaca, New York, 48 pp., 1979b.
- 20 Hilmarsson, J.Ó.: Fuglalíf Vestmannaeyja (Birdlife of Vestmannaeyjar), in: *Vestmannaeyjar, Árbók Ferðafélags Íslands 2009*, edited by: Sigurðsson, J. V., Ferðafélag Íslands, Reykjavík, 28–73, 2009.
- 25 Hodkinson, I. D., Webb, N. R., and Coulson, S. J.: Primary community assembly on land – the missing stages: why are the heterotrophic organisms always the first?, *J. Ecology*, 90, 569–577, 2002.
- Ingimarsdóttir, M., Ripa, J., Magnúsdóttir, Ó. B., and Hedlund, K.: Food web assembly in isolated habitats: a study from recently emerged nunatks, Iceland, *Basic Appl. Ecol.*, 14, 174–183, 2013.
- 30 Ingimundardóttir, G. V., Weibull, H., and Cronberg, N.: Bryophyte colonization history of the virgin volcanic island Surtsey, Iceland, *Biogeosciences*, in review, 2014.





## Plant colonization, succession and ecosystem development

B. Magnússon et al.

Title Page

Abstract

Introduction

Conclusions

References

Tables

Figures



Back

Close

Full Screen / Esc

Printer-friendly Version

Interactive Discussion



Nogales, M., Medina, F. M., Quilis, V., and González-Rodríguez, M.: Ecological and biogeographical implications of Yellow-Legged Gulls (*Larus cachinnans* Pallas) as seed dispersers of *Rubia fruticososa* Ait. (Rubiaceae) in the Canary Islands, *J. Biogeogr.*, 28, 1137–1145, 2001.

Ólafsson, E. and Ingimarsdóttir, M.: The land-invertebrate fauna on Surtsey during 2002–2006. *Surtsey Res.*, 12, 113–128, 2009.

Partomihardjo, T., Mirmanto, E., and Whittaker, R. J.: Anak Krakatau's vegetation and flora circa 1991 with observations on a decade of development and change, *GeoJournal*, 28, 233–248, 1992.

Pavlu, V. Gaisler, J., Pavlu, L., Hejcman, M., and Ludvikova, V.: Effect of fertilizer application and abandonment on plant species composition of *Festuca rubra* grassland, *Acta Oecol.*, 45, 42–49, 2012.

Petersen, Æ.: Formation of a bird community on a new island Surtsey, Iceland, *Surtsey Res.*, 12, 133–148, 2009.

SAS Institute: JMP version 6.03, Cary, NC, SAS Institute Inc., 2006.

Schmid, E. and Oberwinkler, F.: Light and electron microscopy of the host-fungus interaction in the achlorophyllous gametophyte of *Botrychium lunaria*, *Can. J. Bot.*, 72, 182–188, 1994.

Sigurðsson, B. D. and Magnusson, B.: Effects of seagulls on ecosystem respiration, soil nitrogen and vegetation cover on a pristine volcanic island, Surtsey, Iceland, *Biogeosciences*, 7, 883–891, doi:10.5194/bg-7-883-2010, 2010.

Sigurðsson, I. A. and Jakobsson, S. P.: Jarðsaga Vestmannaeyja (Geological history of Vestmannaeyjar), in: *Vestmannaeyjar, Árbók Ferðafélags Íslands 2009*, edited by: Sigurðsson, J. V., Ferðafélag Íslands, Reykjavík, 14–27, 2009.

Sikes, D. S. and Slowik, J.: Terrestrial arthropods of pre- and post-eruption Kasatochi Island, Alaska, 2008–2009: a shift from a plant-based to a necromass-based food web, *Arct. Antarct. Alp. Res.*, 42, 297–305, 2010.

Sobey, D. G. and Kenworthy, J. B.: The relationship between herring gulls and the vegetation of their breeding colonies, *J. Ecol.*, 67, 469–496, 1979.

Svavarsdóttir, K. and Walker, L. R.: The value of Surtsey for ecology research, *Surtsey Res.*, 12, 149–151, 2009.

Swift, M. J., Heal, O. W., and Anderson, J. M.: Decomposition in Terrestrial Ecosystems, *Studies in Ecology Vol. 5*, Blackwell Sci. Publ., 372 pp., 1979.

## BGD

11, 9379–9420, 2014

**Plant colonization,  
succession and  
ecosystem  
development**

B. Magnússon et al.

Title Page

Abstract

Introduction

Conclusions

References

Tables

Figures

⏪

⏩

◀

▶

Back

Close

Full Screen / Esc

Printer-friendly Version

Interactive Discussion



Thornton, I.: Krakatau, The Destruction and Reassembly of an Island Ecosystem, Harvard Univ. Press, 346 pp., 1996.

Thornton, I.: Island Colonization, The Origin and Development of Island Communities, Ecological Reviews, edited by: New, T., Cambridge Univ. Press, 287 pp., 2007.

5 Thornton, I. W. B., Cook, S., Edwards, J. S., Harrison, R. D., Schipper, C., and Shanahan, M.: Colonization of an island volcano, Long Island, Papua New Guinea, and an emergent island, Motmot, in its caldera lake, VII. The overview and discussion, J. Biogeogr., 28, 1389–1408, 2001.

Walker, L. R. and del Moral, R.: Primary Succession and Ecosystem Rehabilitation, Cambridge Univ. Press, UK, 422 pp., 2003.

10 Whittaker, R. J., Bush, M. B., Partomihardjo, T., Asquith, N. M., and Richards, K.: Ecological aspects of plant colonization on the Krakatau islands, GeoJournal, 28, 201–211, 1992.

Whittaker, R. J., Triantis, R. J., and Ladle, R. J.: A general dynamic theory of oceanic island biogeography, J. Biogeogr., 35, 977–994, 2008.

15 Wood, D. M. and del Moral, R.: Mechanisms of early primary succession in subalpine habitats on Mount St. Helens, Ecology, 68, 780–790, 1987.



## Plant colonization, succession and ecosystem development

B. Magnússon et al.

**Table 2.** Surtsey permanent plot data. Average density of gull nests in plots on Surtsey 2003–2012 (no./1000 m<sup>2</sup>), plant cover, species richness and diversity of vascular plants in 2012, standing biomass of vascular plants (live and dead) in 2011, and total carbon in top 10 cm of soil in 2008. Invertebrate and Acari/Collembola data are pitfall traps averages for the 2002–2006 sampling seasons, catch data are individuals caught. Means  $\pm$  s.e.;  $p$  = ANOVA level of significance, n.s.  $\Rightarrow$  0.05; \*  $\leq$  0.05; \*\*  $\leq$  0.01; \*\*\*  $\leq$  0.001. <sup>a</sup> Plots 11–22, 29–32; <sup>b</sup> plots 1, 3, 4, 6–10, 23; <sup>c</sup> include Coleoptera, Diptera, Hemiptera, Hymenoptera, Lepidoptera, Neuroptera, Thysanoptera, Araneae, Gastropoda and Oligochaeta. Invertebrates (including Acari/Collembola) were not sampled in plots 31 and 32,  $n = 14$ .

	Outside <sup>a</sup> gull colony $n = 16, 14$	Inside <sup>b</sup> gull colony $n = 9$	$p$
Nests no.	0.01 $\pm$ 0.01	3.9 $\pm$ 0.8	***
Plant cover %	7.1 $\pm$ 2.8	90.3 $\pm$ 15.2	***
Plant species richness	4.4 $\pm$ 0.5	7.7 $\pm$ 0.9	*
Plant diversity (Shannon)	0.5 $\pm$ 0.1	1.0 $\pm$ 0.2	*
Plant biomass g dw m <sup>-2</sup>	46.7 $\pm$ 23.9	221.2 $\pm$ 75.6	**
Soil carbon %	0.05 $\pm$ 0.02	1.84 $\pm$ 0.55	***
Invertebrate species richness <sup>c</sup>	14.2 $\pm$ 1.1	28.3 $\pm$ 1.3	***
Invertebrate catch/day <sup>c</sup>	13.9 $\pm$ 2.3	17.7 $\pm$ 2.9	n.s.
Acari/Collembola catch/day	20.3 $\pm$ 10.7	108.4 $\pm$ 13.4	***

Title Page

Abstract

Introduction

Conclusions

References

Tables

Figures

◀

▶

◀

▶

Back

Close

Full Screen / Esc

Printer-friendly Version

Interactive Discussion



## Plant colonization, succession and ecosystem development

B. Magnússon et al.

**Table 3.** Average density of seabird nests (no./1000 m<sup>2</sup>), plant cover, species richness and diversity of vascular plants, and soil carbon in plots sampled on islands, according to main Twinspan groupings; <sup>G</sup>: average density of gull nests on Surtsey 2003–2013; <sup>P</sup>: average density of puffin nests on Elliðaey in 2013. Means ± s.e.; *p* = ANOVA level of significance, \*\*\* = ≤ 0.001. Means with same letter are not significantly different at *p* = 0.05.

Island	Presence of seabirds	Twinspan group	No. of plots	Nesting density	Plant cover %	Species richness	Plant diversity	Soil carbon %
Heimaey	–	I	4	0	69.20 ± 16.34 a	18.00 ± 1.19 a	1.90 ± 0.22 a	6.23 ± 1.47 a
Surtsey/Elliðaey	+	II	7	5.13 <sup>G</sup> /269 <sup>P</sup>	88.42 ± 12.25 a	6.00 ± 0.90 b	0.80 ± 0.16 b	9.14 ± 1.11 a
Surtsey	+	III	8	2.51 <sup>G</sup>	70.99 ± 11.55 a	7.13 ± 0.84 b	0.85 ± 0.15 b	1.07 ± 1.04 b
Surtsey	–	IV	14	0	7.56 ± 8.73 b	4.43 ± 0.64 b	0.54 ± 0.12 b	0.04 ± 0.79 c
<i>p</i>				n.d.	***	***	***	***

[Title Page](#)
[Abstract](#)
[Introduction](#)
[Conclusions](#)
[References](#)
[Tables](#)
[Figures](#)
[Back](#)
[Close](#)
[Full Screen / Esc](#)
[Printer-friendly Version](#)
[Interactive Discussion](#)


**Table A1.** Vascular plants colonizing Surtsey during 1965–2013 and species list for neighbouring Vestmannaeyjar islands. (•) denotes species that have been recorded on Surtsey but were not present in 2013; species that had formed viable populations (v.p.) in 2013 or were found within permanent plots (p.p.) in 2012 are marked. The species list of the Vestmannaeyjar islands is based on Friðriksson and Johnsen, 1967 and our surveys of Elliðaey and Álsey in 2010–2013.

Island size (km <sup>2</sup> )	1.3			0.46	0.32	0.25	0.2	0.13	0.1	0.04	0.02	0.01
Island	Surtsey	Surtsey	Surtsey	Elliðaey	Bjarnarey	Álsey	Suðurey	Hellisey	Brandur	Súlnasker	Geirfuglasker	Þridrangar
	2013	v.p. 2013	p.p. 2012									
Surtsey order of colonization												
1	•	•	•									
2	•	•	•									
3	•	•	•									
4	•	•	•									
5	•	•	•									
6	•	•	•	•	•	•	•	•	•	•	•	•
7	•	•	•									
8	•	•	•	•	•	•	•	•	•	•	•	•
9	•	•	•									
10	•	•	•	•	•	•	•	•	•	•	•	•
11	•	•	•	•	•	•	•	•	•	•	•	•
12	•	•	•	•	•	•	•	•	•	•	•	•
13	•	•	•	•	•	•	•	•	•	•	•	•
14	•	•	•	•	•	•	•	•	•	•	•	•
15	•	•	•	•	•	•	•	•	•	•	•	•
16	•	•	•	•	•	•	•	•	•	•	•	•
17	•	•	•	•	•	•	•	•	•	•	•	•
18	•	•	•	•	•	•	•	•	•	•	•	•
19	•	•	•	•	•	•	•	•	•	•	•	•
20	•	•	•	•	•	•	•	•	•	•	•	•
21	•	•	•	•	•	•	•	•	•	•	•	•
22	•	•	•	•	•	•	•	•	•	•	•	•
23	•	•	•	•	•	•	•	•	•	•	•	•
24	•	•	•	•	•	•	•	•	•	•	•	•
25	•	•	•	•	•	•	•	•	•	•	•	•
26	•	•	•	•	•	•	•	•	•	•	•	•
27	•	•	•	•	•	•	•	•	•	•	•	•
28	•	•	•	•	•	•	•	•	•	•	•	•
29	•	•	•	•	•	•	•	•	•	•	•	•
30	•	•	•	•	•	•	•	•	•	•	•	•
31	•	•	•	•	•	•	•	•	•	•	•	•
32	•	•	•	•	•	•	•	•	•	•	•	•
33	•	•	•	•	•	•	•	•	•	•	•	•
34	•	•	•	•	•	•	•	•	•	•	•	•
35	•	•	•	•	•	•	•	•	•	•	•	•
36	•	•	•	•	•	•	•	•	•	•	•	•
37	•	•	•	•	•	•	•	•	•	•	•	•
38	•	•	•	•	•	•	•	•	•	•	•	•
39	•	•	•	•	•	•	•	•	•	•	•	•
40	•	•	•	•	•	•	•	•	•	•	•	•
41	•	•	•	•	•	•	•	•	•	•	•	•
42	•	•	•	•	•	•	•	•	•	•	•	•
43	•	•	•	•	•	•	•	•	•	•	•	•
44	•	•	•	•	•	•	•	•	•	•	•	•

## Plant colonization, succession and ecosystem development

B. Magnússon et al.

Title Page

Abstract

Introduction

Conclusions

References

Tables

Figures

◀

▶

◀

▶

Back

Close

Full Screen / Esc

Printer-friendly Version

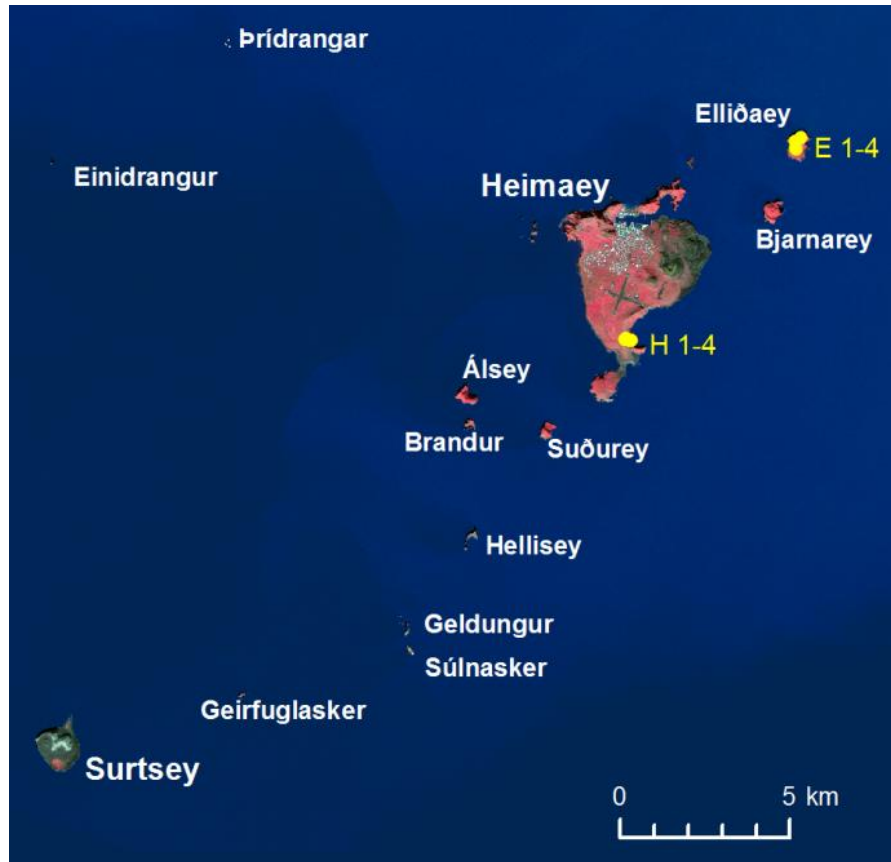
Interactive Discussion



Table A1. Continued.

Island size (km <sup>2</sup> )	1.3	Surtsey	Surtsey	0.46	0.32	0.25	0.2	0.13	0.1	0.04	0.02	0.01	
Island	Surtsey	Surtsey	Surtsey	Ellibæy	Bjarnarey	Álsey	Suburey	Hellisey	Brandur	Súlasker	Geirfuglasker	Pridrangar	
	2013	v.p. 2013	p.p. 2012										
45	<i>Potentilla anserina</i>	•	•		•								
46	<i>Anthoxanthum odoratum</i>	•	•		•								
47	<i>Leontodon autumnalis</i>	•	•	•	•	•	•						
48	<i>Rumex longifolius</i>	•	•	•									
49	<i>Polypodium vulgare</i>	•											
50	<i>Luzula spicata</i>	•											
51	<i>Myosotis arvensis</i>	•											
52	<i>Salix phylicifolia</i>	•	•										
53	<i>Oxyria digyna</i>	(•)											
54	<i>Salix lanata</i>	•											
55	<i>Euphrasia frigida</i>	•	•	•	•		•						
56	<i>Plantago maritima</i>	•	•	•	•	•	•	•	•				
57	<i>Platanthera hyperborea</i>	(•)											
58	<i>Galium verum</i>	•											
59	<i>Plantago lanceolata</i>	•	•										
60	<i>Thymus praecox</i>	•	•										
61	<i>Saxifraga caespitosa</i>	•	•	•	•	•							
62	<i>Rhodiola rosea</i>	(•)		•	•	•							
63	<i>Festuca vivipara</i>	•											
64	<i>Achillea millefolium</i>	•			•								
65	<i>Alopecurus pratensis</i>	(•)		•		•	•						
66	<i>Calamagrostis stricta</i>	•											
67	<i>Gymnocarpium dryopteris</i>	•	•										
68	<i>Epilobium collinum</i>	(•)											
69	<i>Botrychium lunaria</i>	•											
Neighbour islands additional species													
70	<i>Ranunculus repens</i>			•			•						
71	<i>Draba incana</i>			•									
72	<i>Juncus bufonius</i>			•									
73	<i>Epilobium hornemanni</i>			•									
74	<i>Saxifraga rivularis</i>					•							
<hr/>													
Species total		59	39	22	28	28	24	22	9	11	7	4	2





**Figure 1.** Surtsey and other Vestmannaeyjar islands on an infra-red Rapid Eye image from 28 August 2012. Areas with dense vegetation appear in red colour, e.g. gull colony on Surtsey. Location of vegetation plots sampled on Elliðaey and Heimaey in 2013 is shown in yellow.

## BGD

11, 9379–9420, 2014

### Plant colonization, succession and ecosystem development

B. Magnússon et al.

Title Page

Abstract

Introduction

Conclusions

References

Tables

Figures

◀

▶

◀

▶

Back

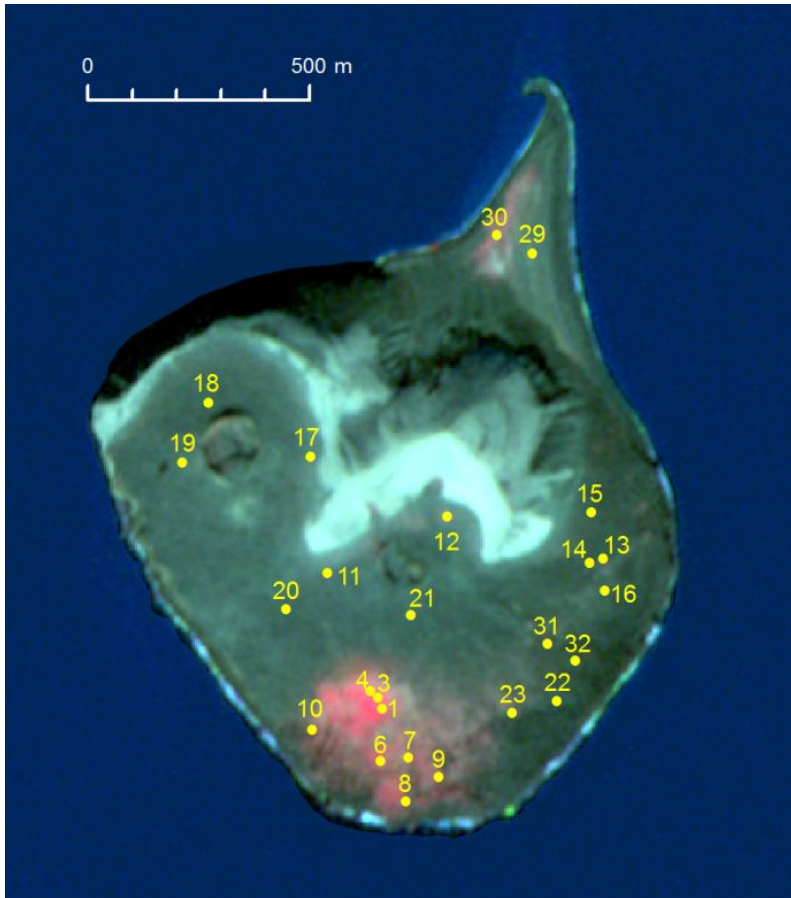
Close

Full Screen / Esc

Printer-friendly Version

Interactive Discussion





**Figure 2.** Location of permanent plots on Surtsey, infra-red Rapid Eye image from 28 August 2012. Note dense vegetation of gull colony (13 ha) on the southern lava and shore community (1 ha) on the northern spit. Plots 1, 3, 4, 6–10 and 23 are within the gull colony.

## BGD

11, 9379–9420, 2014

### Plant colonization, succession and ecosystem development

B. Magnússon et al.

Title Page

Abstract

Introduction

Conclusions

References

Tables

Figures

◀

▶

◀

▶

Back

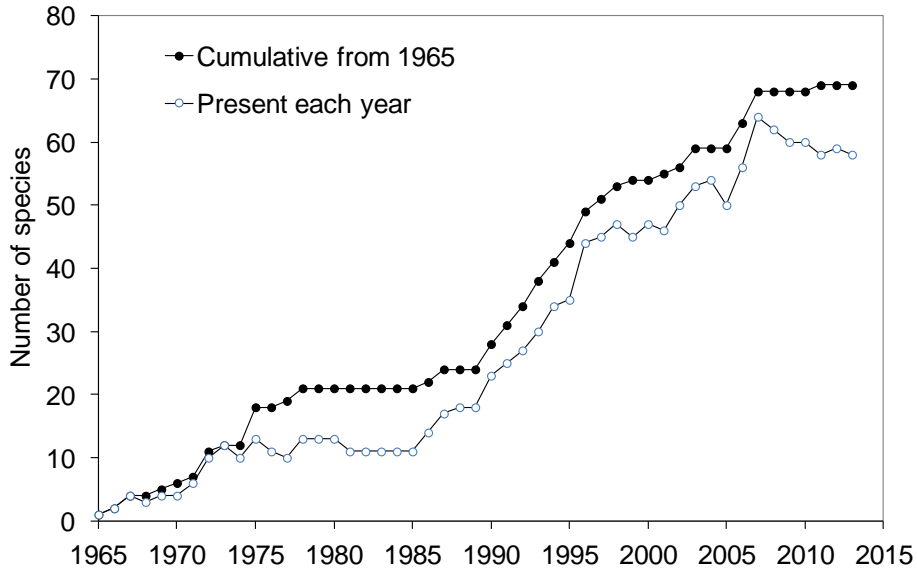
Close

Full Screen / Esc

Printer-friendly Version

Interactive Discussion





**Figure 3.** Surtsey colonization curve for vascular plants during 1965–2013.

# BGD

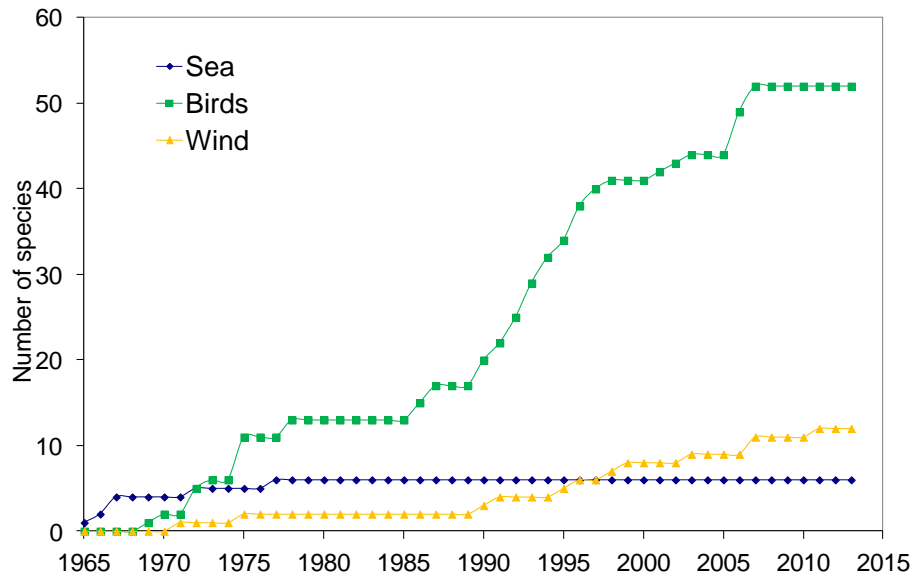
11, 9379–9420, 2014

## Plant colonization, succession and ecosystem development

B. Magnússon et al.

<a href="#">Title Page</a>	
<a href="#">Abstract</a>	<a href="#">Introduction</a>
<a href="#">Conclusions</a>	<a href="#">References</a>
<a href="#">Tables</a>	<a href="#">Figures</a>
<a href="#">◀</a>	<a href="#">▶</a>
<a href="#">◀</a>	<a href="#">▶</a>
<a href="#">Back</a>	<a href="#">Close</a>
<a href="#">Full Screen / Esc</a>	
<a href="#">Printer-friendly Version</a>	
<a href="#">Interactive Discussion</a>	





**Figure 4.** Cumulative curves of dispersal routes to Surtsey most probably used by different vascular plant species during 1965–2013. Based on dispersal-mode spectra of the flora and sites of establishment on the island.

# BGD

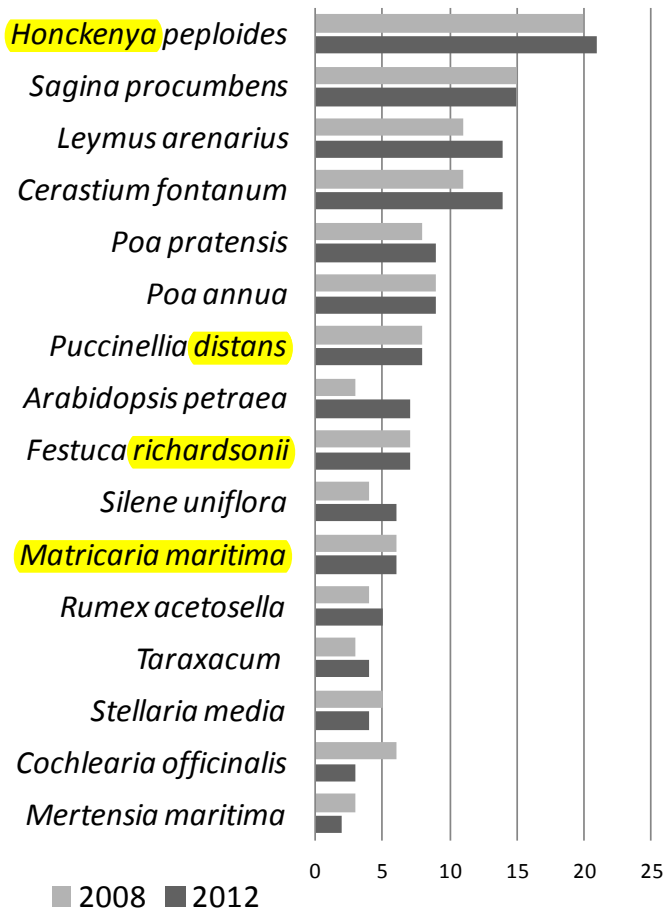
11, 9379–9420, 2014

## Plant colonization, succession and ecosystem development

B. Magnússon et al.

<a href="#">Title Page</a>	
<a href="#">Abstract</a>	<a href="#">Introduction</a>
<a href="#">Conclusions</a>	<a href="#">References</a>
<a href="#">Tables</a>	<a href="#">Figures</a>
<a href="#">⏪</a>	<a href="#">⏩</a>
<a href="#">◀</a>	<a href="#">▶</a>
<a href="#">Back</a>	<a href="#">Close</a>
<a href="#">Full Screen / Esc</a>	
<a href="#">Printer-friendly Version</a>	
<a href="#">Interactive Discussion</a>	





**Figure 5.** Relative frequency of vascular species in the 25 permanent plots on Surtsey in 2008 and 2012. Species occurring in  $\geq 2$  plots are shown.

## BGD

11, 9379–9420, 2014

### Plant colonization, succession and ecosystem development

B. Magnússon et al.

Title Page

Abstract

Introduction

Conclusions

References

Tables

Figures

◀

▶

◀

▶

Back

Close

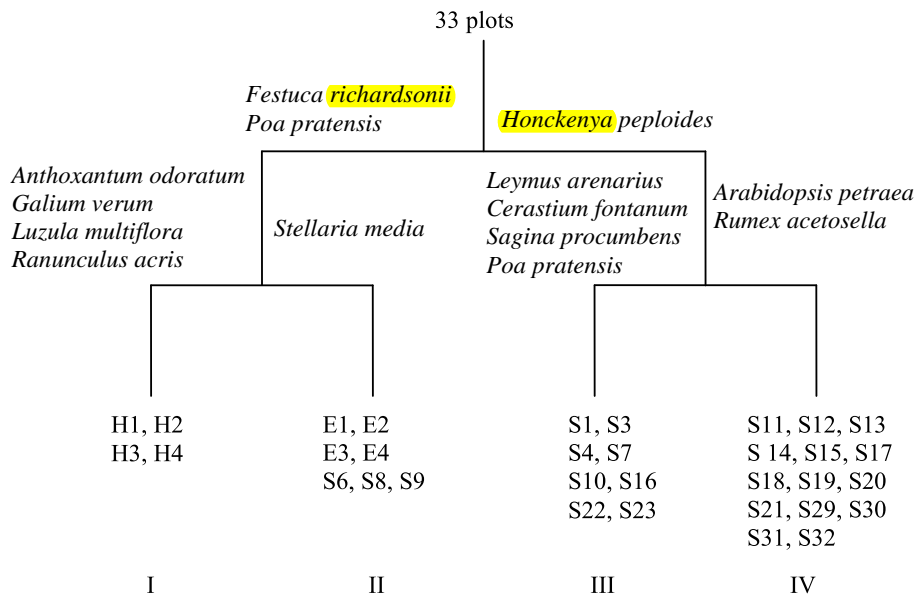
Full Screen / Esc

Printer-friendly Version

Interactive Discussion







**Figure 7.** TWINSpan-classification of permanent plots sampled on Surtsey (S), Heimaey (H) and Elliðaey (E) in 2012–2013. Species most decisive (indicators) of each division are shown and the four groups formed.

Title Page

Abstract Introduction

Conclusions References

Tables Figures

◀ ▶

◀ ▶

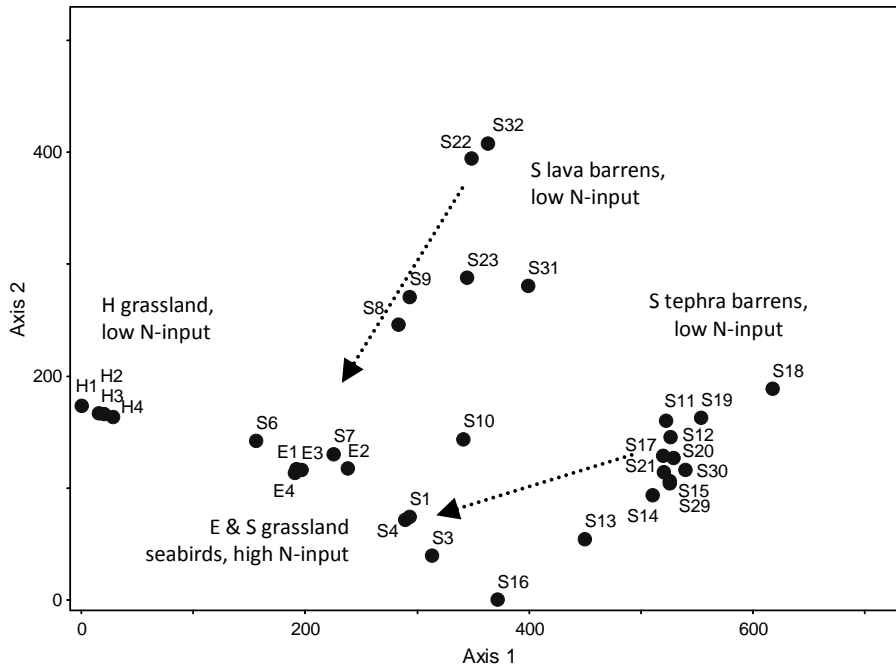
Back Close

Full Screen / Esc

Printer-friendly Version

Interactive Discussion





**Figure 8.** DCA-ordination results for permanent plots sampled on Surtsey (S), Heimaey (H) and Elliðaey (E) in 2012–2013. Arrows indicate direction of succession on Surtsey under nutrient inputs from breeding **seagulls**.

**Plant colonization, succession and ecosystem development**

B. Magnússon et al.

Title Page

Abstract

Introduction

Conclusions

References

Tables

Figures

◀

▶

◀

▶

Back

Close

Full Screen / Esc

Printer-friendly Version

Interactive Discussion







**Figure 9.** *Poa pratensis*/*Leymus arenarius* grassland in centre of gull colony (plot 1) on Surtsey in 2013. Upper crater areas and palagonite ridges remain barren. Photo: BM.

## BGD

11, 9379–9420, 2014

### Plant colonization, succession and ecosystem development

B. Magnússon et al.

Title Page

Abstract

Introduction

Conclusions

References

Tables

Figures



Back

Close

Full Screen / Esc

Printer-friendly Version

Interactive Discussion





**Figure 10.** *Festuca richardsonii*/*Poa pratensis* grassland on upper parts of Elliðaey. Plot E1 was located in a puffin colony on palagonite slope above and to the right of cottage. Photo: BM, 2010.

Plant colonization,  
succession and  
ecosystem  
development

B. Magnússon et al.

Title Page

Abstract

Introduction

Conclusions

References

Tables

Figures



Back

Close

Full Screen / Esc

Printer-friendly Version

Interactive Discussion

