

Interactive comment on “Spatial genetic structure of the Sea Sandwort on Surtsey: an immigrant’s journey” by S. H. Árnason et al.

S. H. Árnason et al.

kesara@hi.is

Received and published: 27 August 2014

We would like to thank the reviewer for his very constructive advise on how to improve Figure 2, the NJ trees. Attached here please find the new and improved version of this figure. Regarding the spelling error pointed out we have corrected it in the revised version of the manuscript, which will be submitted to BG in due course.

Interactive comment on Biogeosciences Discuss., 11, 10045, 2014.

C4685

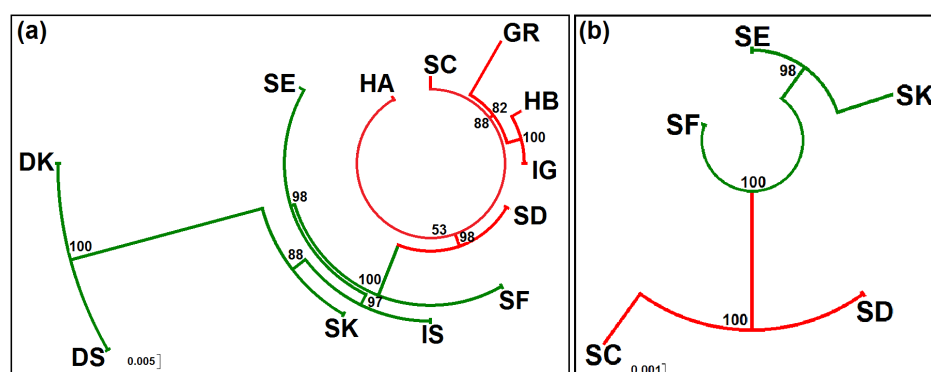


Fig. 1. Un-rooted Neighbor Joining (NJ) trees based on Nei's genetic distances

C4686