

Figure 1. SeaWiFS True Color for Aug. 3, 2006, available from http://www.nrlmry.navy.mil/aerosol/index_frame.html .
Dust is visible off the coast of Africa.

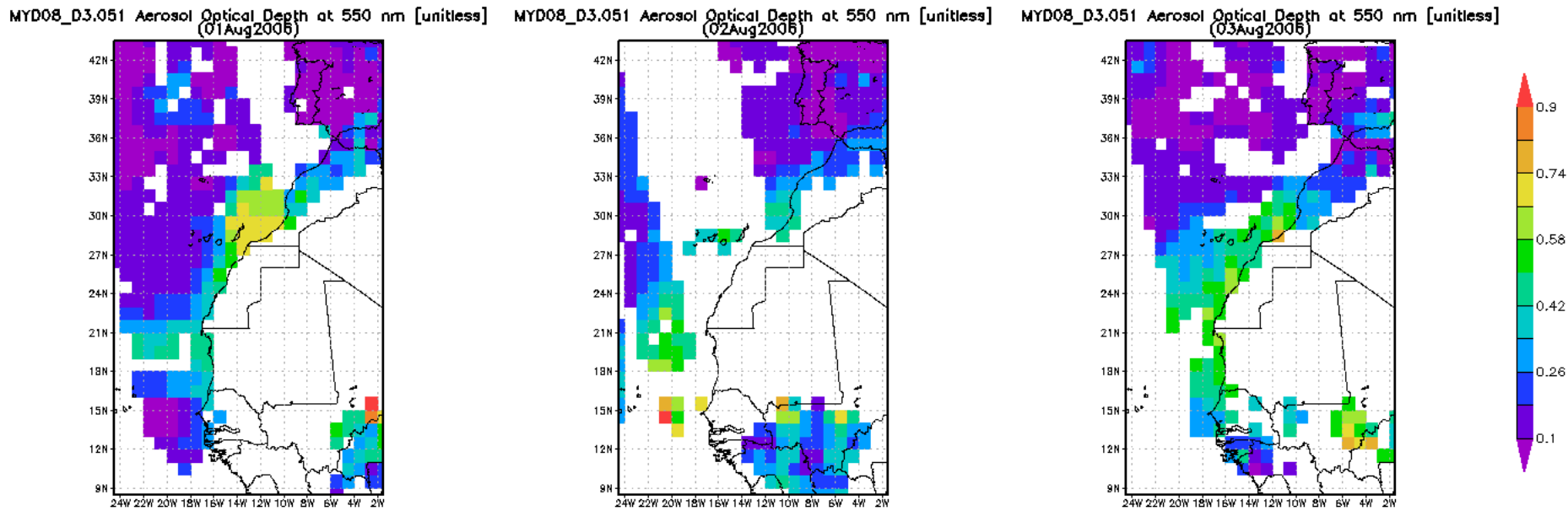


Figure 2. MODIS Aerosol Optical Depth at 550 nm for Aug. 1-3, 2006, available from http://gdata1.sci.gsfc.nasa.gov/daac-bin/G3/gui.cgi?instance_id=MODIS_DAILY_L3. High AOD is indicative of dust from the coast of Africa.

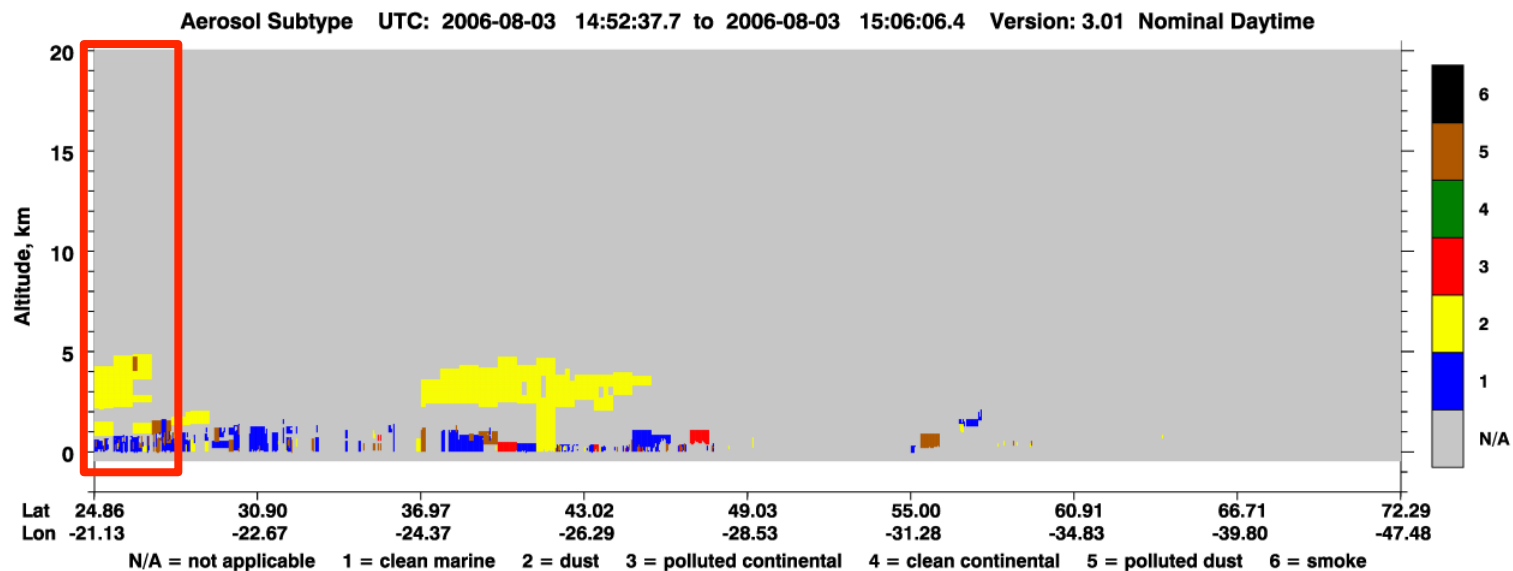
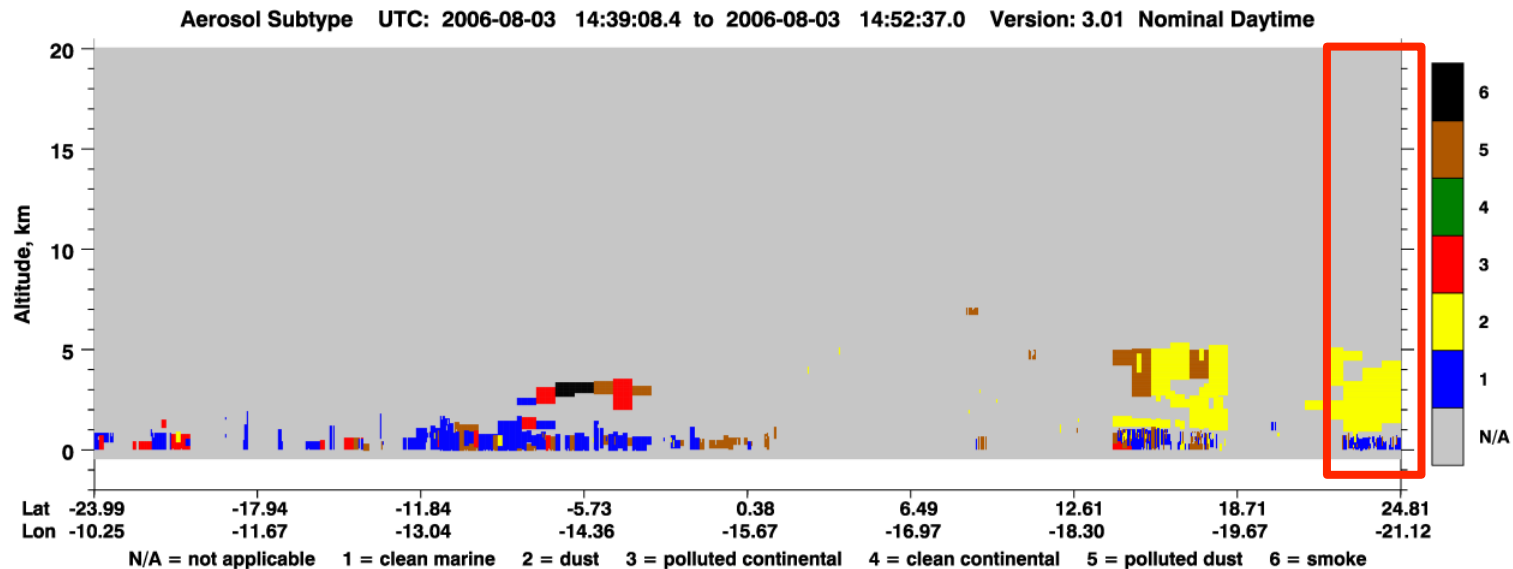


Figure 3. CALIPSO aerosol subtypes nearby the sampling region on Aug. 3, 2006 (based on Fig. 3b, sampling location is ~ 22.5 N and -20 E). Red boxes show area along satellite track that most closely correspond to this location. A dust layer appears to have been located above the sampling site, which may have impacted the sample.

SWFMO_CHLO.CR Chlorophyll a concentration [mg/m**3]
(Jan2007)

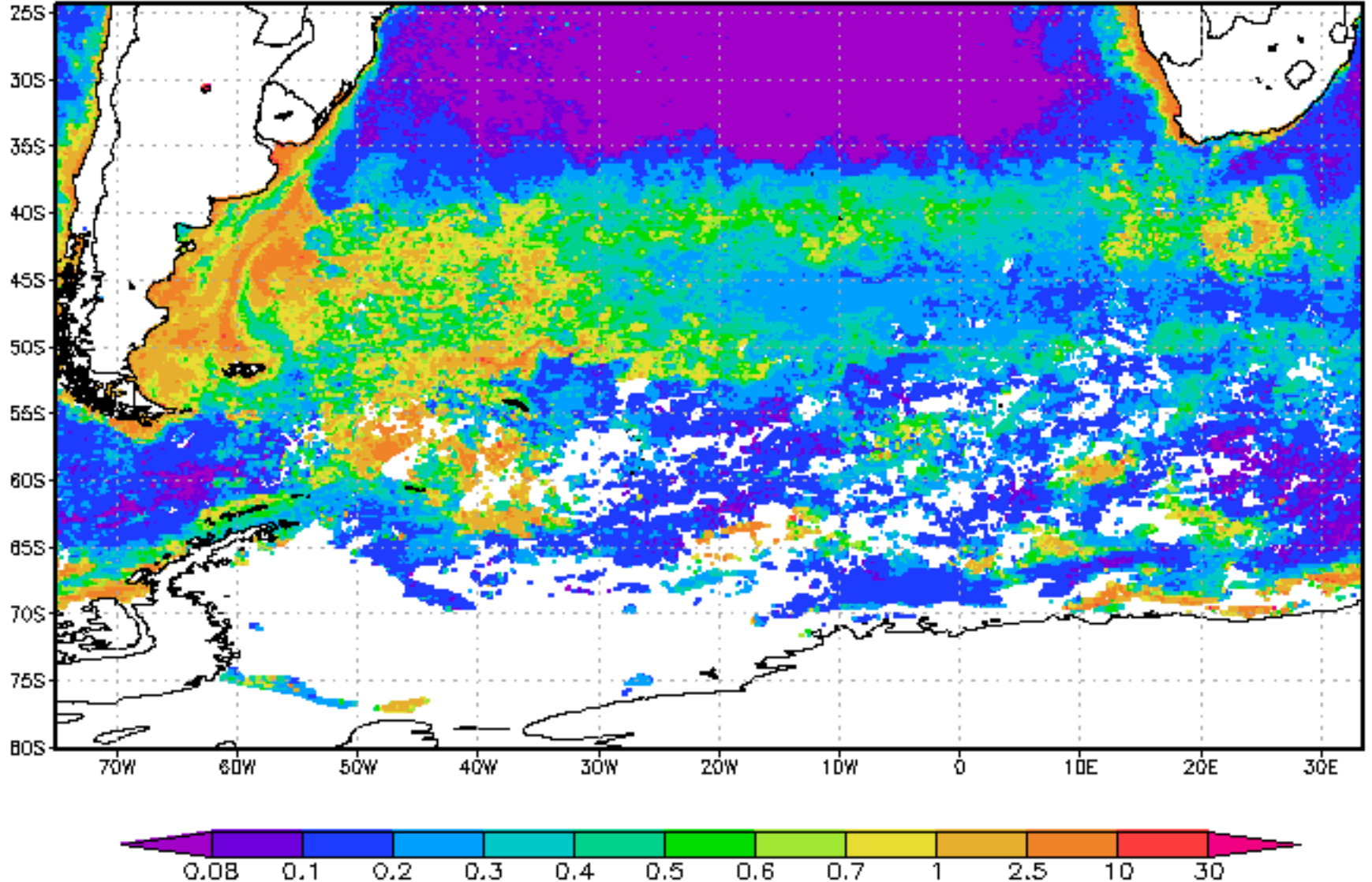


Figure 4. SeaWiFS Chlorophyll a concentrations averaged over Jan 2007 from the Giovanni website (accessed Sept 9, 2014 from http://gdata1.sci.gsfc.nasa.gov/daac-bin/G3/gui.cgi?instance_id=ocean_month)