

Interactive
Comment

Interactive comment on “Gas emissions at the continental margin west off Svalbard: mapping, sampling, and quantification” by H. Sahling et al.

H. Sahling et al.

hsahling@marum.de

Received and published: 13 September 2014

We thank the two anonymous reviewers for the constructive comments and applied all changes as suggested. Specifically, these changes include: 1) according to reviewer 2 we amended the text in the Material and Method section and clarified the issue with the weighted sum of Sv levels 2) according to reviewer 2 we applied changes to Figure 3 (and its caption) to better illustrate the path of the bubbles 3) according to reviewer 1 we applied the spell corrections 4) according to reviewer 1 we amended an overview figure

We have to apologize for an additional error in the manuscript that is quite substantial. The study by Moreno et al. 2013 is an estimate of future methane emissions on time scales of 100 and 300 years and NOT as we stated on 10 and 30 years (text and

Full Screen / Esc

Printer-friendly Version

Interactive Discussion

Discussion Paper



Table 7). We are thankful for receiving this important advice and applied changes accordingly.

Please also note the supplement to this comment:

<http://www.biogeosciences-discuss.net/11/C5110/2014/bgd-11-C5110-2014-supplement.zip>

Interactive comment on Biogeosciences Discuss., 11, 7189, 2014.

BGD

11, C5110–C5113, 2014

Interactive
Comment

Full Screen / Esc

Printer-friendly Version

Interactive Discussion

Discussion Paper



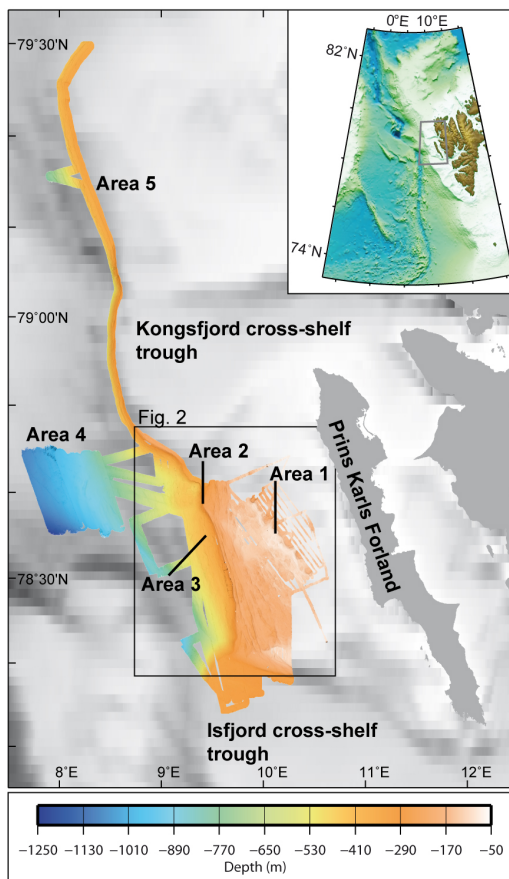


Fig. 1.

Full Screen / Esc

Printer-friendly Version

Interactive Discussion

Discussion Paper



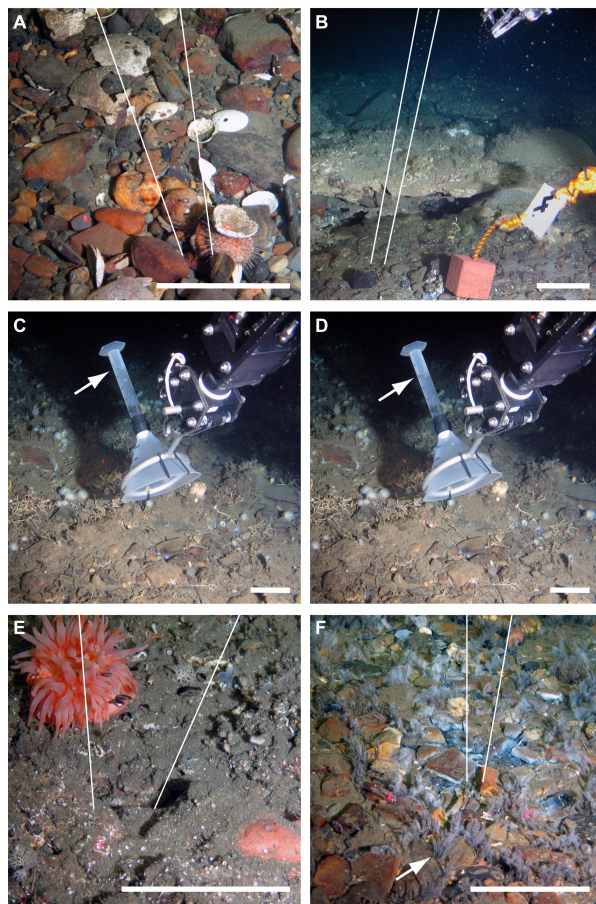


Fig. 2.

Full Screen / Esc

Printer-friendly Version

Interactive Discussion

Discussion Paper

