

Modelling the effect of soil moisture and organic matter degradation on biogenic NO emissions from soils in Sahel rangeland (Mali)

C. Delon¹, E. Mougin², D. Serça¹, M. Grippa², P. Hiernaux², M. Diawara², C. Galy-Lacaux¹, and L. Kergoat²

¹Laboratoire d'Aérodologie, Université de Toulouse and CNRS, Toulouse, France

²Geosciences Environnement Toulouse, Université de Toulouse, CNRS and IRD, Toulouse, France

Abstract.

This work is an attempt to provide seasonal variation of biogenic NO emission fluxes in a sahelian rangeland in Mali (Agoufou, 15.34° N, 1.48° W) for years 2004, 2005, 2006, 2007 and 2008. Indeed, NO is one of the most important precursor for tropospheric ozone, and previous studies have shown that arid areas potentially display significant NO emissions (due to both biotic and abiotic processes). Previous campaigns in the Sahel suggest that the contribution of this region in emitting NO is no more considered as negligible. However, very few data are available in this region, therefore this study focuses on model development. The link between NO production in the soil and NO release to the atmosphere is investigated in this modeling study, by taking into account vegetation litter production and degradation, microbial processes in the soil, emission fluxes, and environmental variables influencing these processes, using a coupled vegetation-litter decomposition-emission model. This model includes the Sahelian-Transpiration-Evaporation-Productivity (STEP) model for the simulation of herbaceous, tree leaf and fecal masses, the GENDEC model (GENeral DEComposition) for the simulation of the buried litter decomposition and microbial dynamics, and the NO emission model (NOFlux) for the simulation of the NO release to the atmosphere. Physical parameters (soil moisture and temperature, wind speed, sand percentage) which affect substrate diffusion and oxygen supply in the soil and influence the microbial activity, and biogeochemical parameters (pH and fertilization rate related to N content) are necessary to simulate the NO flux. The reliability of the simulated parameters is checked, in order to assess the robustness of the simulated NO flux. Simulated yearly average of NO flux ranges from 2.09 to 3.04 ng(N)m⁻²s⁻¹ (0.66 to 0.96 kg(N)ha⁻¹yr⁻¹), and wet season average ranges from

35 3.36 to 5.48 ng(N)m⁻²s⁻¹ (1.06 to 1.73 kg(N)ha⁻¹yr⁻¹). These results are in the same order as previous measurements made in several sites where the vegetation and the soil are comparable to the ones in Agoufou. This coupled vegetation-litter decomposition-emission model could be generalized at the scale of the Sahel region, and provide information where little data is available.

1 Introduction

In the continental biosphere, most of the N cycle is accomplished through internal processes such as mineralization/assimilation, because N is mostly assimilated in the biosphere from its mineral form (nitrates NO₃⁻, ammonium NH₄⁺). In natural soils, these compounds come from Biological Nitrogen Fixation (BNF, Vitousek et al. (2013)), from atmospheric dry and wet deposition (Laouali et al. (2012), Galy-Lacaux et al., (2009)) and from the mineralization of organic matter through the bacterial and fungal decomposition of dead matter. N cycle in the soil is dominated by microbial transformations. Bacterial processes involve important reactive gaseous components, *e.g.* NO formation through nitrification and denitrification (Delmas et al. (1995), Schreiber et al. (2012), Medinets et al. (2015)). A significant fraction of these compounds can be released to the atmosphere. NO is one of the most important precursor for tropospheric ozone, and participates to the formation of nitric acid, participating in N deposition. NO_x (NO_x=NO+NO₂) are also involved in the abundance of the hydroxyl radical (OH) which determines the lifetime of some pollutants and greenhouse gases (Fowler et al., 2009).

Atmospheric NO_x is coupled to the earth's nitrogen cycle through complex interactions involving soil microbial activity, soil N content and N inputs to the soil, either from anthropogenic or atmospheric origin (Hudman et al. (2012), Parton et al. (2001)). The processes of NO production and consump-

tion in the soil have been studied through modelling, laboratory or field studies by several authors (Butterbach-Bahl et al. (2004a), Schindblacher et al. (2004), Li et al. (2000)) for different types of soils and climates (Butterbach-Bahl et al. (2009), and Kesik et al. (2005) for European soils, Feig et al. (2008) and Meixner et al. (1997) for tropical soils as examples). The release of NO (NO emission) to the atmosphere is the result of production and consumption processes in the soil. In many previous studies it was observed that the NO release equals the NO production minus the NO consumption. Several biotic and abiotic processes in soils and plants are responsible for the production and consumption of NO (Gallabally and Johansson (1989), Conrad (1996), Medinets et al. (2015), Pilegaard, (2013)). Microbial nitrification and denitrification constitute the principal processes (Ludwig et al., 2001). According to McCalley and Sparks (2008) and references therein, fluxes are regulated by factors that include the concentration of inorganic N (NO_3^- and NH_4^+), soil moisture, temperature, accessibility of labile C, and physical soil properties. Most of the trace gas production and consumption processes in soil (trace gases such as NO, N_2O , CH_4 , CO) are probably due to microorganisms (Pilegaard, (2013), Conrad (1996), Fowler et al. (2009)). Oxidation of NO to nitrate has been found to be the dominant NO consumption mechanism in some soils (Conrad (1996) and references therein). Release rates of NO can be much lower than the NO production rates, since NO consumption is of similar magnitude to NO production. NO shows both high and variable production and consumption rates in soil and consequently highly dynamic compensation points (Conrad, 1996). The concept of the compensation concentration is based on the observation that production and consumption of a trace gas occur simultaneously in a soil and that the consumption rate is a function of the trace gas concentration, whereas the production rate is not (Conrad, 1994). According to Ludwig et al. (2001), the net exchange of NO between ecosystems and the atmosphere is globally dominated by biogenic emissions of NO from soils. Only at exceptionally high ambient NO concentration, direct deposition to plants might constitute a significant removal mechanism for atmospheric NO (Ludwig et al., 2001). After NO is oxidized into NO_2 , NO_2 can be deposited on the vegetation, decreasing the net emission of NO above canopy to the atmosphere. Above canopy emissions are calculated by introducing the Canopy Reduction Factor (CRF) concept, based on the Leaf Area Index (LAI), and considering the canopy as an absorber of NO_2 (Yienger and Levy (1995), Butterbach-Bahl et al. (2004b)).

NO release in arid and semi arid soils are mainly governed by pulse events, produced when first precipitations shower long-dried soils at the beginning of the rainy season. Several studies have shown that pulse emissions of NO contribute strongly to the total emission (Yan et al. (2005), Hudman et al. (2010), Jaeglé et al. (2004), Kim et al. (2012)), specifically in semi arid regions. In those regions, mineral and organic substrates tend to accumulate at the soil surface and

in the soil during the long dry season, when there is little nutrient demand, leading to an excess of mineralization during the early phases of the wet cycle (Schwinning et al., 2004).

At the global scale, NO emissions from soils have been estimated to be approximately 21 Tg(N)yr^{-1} (Davidson and Kinglerlee, 1997) at the ground level (below canopy), a portion of the NO_2 being deposited within the canopy. Above canopy emissions were estimated to be $5.45 \text{ Tg(N)yr}^{-1}$ by one of the first global modelling study on the subject (Yienger and Levy, 1995), and more recently up to 8.6 Tg(N)yr^{-1} (Steinkamp and Lawrence, 2011) and $10.7 \text{ Tg(N)yr}^{-1}$ (Hudman et al., 2012). At the scale of the Sahelian region, Delon et al. (2010) have calculated a $0.5 \pm 0.1 \text{ Tg(N)yr}^{-1}$ above canopy NO_x emission, representing 5 to 10% of the global budget according to Hudman et al. (2012) or Yienger and Levy (1995). Hudman et al. (2012) have shown that the largest pulsed enhancements in their model are predicted over this region during the monsoon onset (April to June), comprising 15 to 65 % of the simulated NO_2 column and increasing variability by a factor of 5. As a consequence, the contribution of the Sahel in emitting NO is no more considered as negligible. Though they are of high interest for the specific mechanisms taking place there, and for their relatively high contribution to the global N cycle, semi arid regions remain poorly investigated due to the remoteness of the sites and the complexity to run long term measurements in difficult conditions. Modelling is therefore a precious help to describe the environmental conditions that favour or not NO emissions. However, in the same time, laboratory and field measurements are necessary to better understand production and consumption processes in the soil leading to the release of NO, and to improve modeling approaches.

In this study, we propose a modelling approach of NO emissions from soils at the yearly and seasonal scale. The goal is to identify production and consumption processes, linked to NO release, through organic matter decomposition and microbial dynamics in the soil, in semi arid ecosystems. A coupled vegetation-litter decomposition-emission modelling approach is used, which links three existing models specifically developed for semi arid regions, simulating respectively the growth and degradation of the vegetation (STEP, Mougín et al. (1995)), the decomposition of the organic matter and microbial processes in the soil (GENDEC, Moorhead and Reynolds (1991)), and the release of NO (NOFlux, Delon et al. (2007)) associated to environmental variables. Modelling results are compared to data collected in the northern Mali site of Agoufou for years 2004 to 2008. This modelling tool has been developed for semi arid regions where specific processes such as pulses of emission need to be taken into account. Indeed, pulses are usually underestimated by global scale modelling, and the specificity of a model developed for semi arid regions helps to provide magnitudes of NO fluxes. In our study, these emissions are related to their biogeochemical origin, to the quantity of

biomass, to the quantity of livestock which drives the quantity of organic matter and the N pool and N turnover in the soil. Furthermore, the Sahel region is a large region grazed by domestic cattle, and the role of animals in biomass management, as it is included in our modelling approach, is seldom highlighted in regional or global models. This study presents a more detailed emission model than those based on the Yienger and Levy (1995) approach only, and gives an insight in N production processes in the soil at the origin of the emission.

Firstly, the Agoufou site is presented, as well as the different measurements used for model comparison. Secondly, the three models, STEP, GENDEC and NOFlux, are introduced. Finally, modelling results are discussed and compared to field measurements, and limitations and uncertainties are assessed.

2 Data source: Agoufou site

The Agoufou study site (Mali, 15.34° N, 1.48° W) is part of the African Monsoon Multi-disciplinary Analysis (AMMA) - Couplage de l'Atmosphère Tropicale et du Cycle Hydrologique (CATCH) site observatory located in the northern Mali Gourma region. This region stretches from the loop of the Niger River southward down to the border region with Burkina-Faso (Mougin et al., 2009). Located towards the northern limit of the area reached by the West African Monsoon, the region experiences a single rainy season with most precipitation falling between late June and mid September. The rainy season is followed by a long dry season of approximately 8 months. At the Agoufou site, the soil is sandy, with 91.2% of sand, 3.1% of silt and 4.6% of clay in the first 5 centimeters. The surface pH is 6.7. The hydrologic system is endorheic operating at short distance from dune slopes to inter-dune depressions within small adjacent catchments. The vegetation at Agoufou is an open woody savanna, typical of mid-Sahel sandy soil vegetation with a herbaceous layer almost exclusively composed of annual species, and scattered trees and shrubs with a 3.1 % crown cover (Hiernaux et al., 2009). The area is used as livestock grazing under communal access. Because of the proximity of the Agoufou permanent pond, the grazing pressure is high during the dry season. Agoufou can be considered as representative of Sahelian dry savannas. A comprehensive description of the site can be found in Mougin et al. (2009).

2.1 Meteorological and vegetation data

At the Agoufou site, woody and herbaceous plant density and species composition are organised in facieses following finer topography and soils nuances or differences in land use practices and histories (Hiernaux et al., 2009). The herbaceous layer has been monitored using a two-level stratified random sampling design, as described in Hiernaux et al. (2009). Total

and green vegetation cover (visual and digital photograph estimates in %, Mougin et al. (2014)), standing and litter mass (destructive measure, with harvest, air drying and weighing) and species composition (list with visual estimates of contribution to bulk) are assessed in 1 × 1 m plots randomly sampled in each of the vegetated strata along the transect. Above ground green and dry masses and surface litter mass have been sampled during several years, but only the years 2004, 2005, 2006, 2007 and 2008 are used in this study to evaluate the performance of the model. Indeed, these years represent contrasted meteorological conditions, with low rainfall years (2004 and 2008) and years with normal rainfall for the region (2005, 2006, 2007). Furthermore, vegetation data are more numerous during these years, when the AMMA experiment took place in West Africa.

A meteorological station has been installed from 2002 to 2010, giving data on rainfall, wind speed, relative humidity, air temperature and global radiation. These data were quality checked and gap filled for the years 2004 to 2008 only. Data on soil moisture at different levels and different places (top, middle and bottom locations of dune slope), and soil temperatures at different levels are also available, except for year 2004. A detailed description of the soil moisture network and methodology and of the meteorological station is given in De Rosnay et al. (2009) and Mougin et al. (2009). Meteorological and vegetation data are available in the AMMA data base: <http://bd.amma-catch.org/amma-catch2/main.jsf> (Redelsperger et al., 2006). Other data are progressively integrated in this data base.

2.2 Calculation of NO flux

NO fluxes were measured at Agoufou during summers 2004 and 2005, from closed dynamic chambers (flowed-through-non-steady-state), defined in Pihlatie et al. (2013). A comprehensive description of the chamber device and calculation flux theory is available in Pape et al. (2009). Stainless steel opaque chambers of 800 cm² area (40*20) and 18 cm height were used. A stainless steel frame is inserted into the ground before the measurement which starts when adjusting the chamber on the frame, sealing being assured by a slot filled with water. The air inlet is on one side of the chamber, the air outlet on the other side is connected to the analyzer with two meters of Teflon tubing, so that the chamber is swept with an air flow only due to the pump of the instrument. The inflow is not ozone free. Therefore, due to chemical reactions inside the chamber, the fluxes are underestimated. This underestimation is calculated (see below) and is small, due to low ozone mixing ratios. The residence time of the air inside the chamber is approximately 10 minutes. No significant change in air temperature in the chamber has to be noticed during this lapse time. Pressure is assumed to be constant throughout the flux measurement and equal to ambient pressure. A small vent of 4mm in diameter provided the pressure equilibrium between the inside and outside of

the chamber. As the chamber is ventilated (a circulation of air is always assured by the small vent and the pumping), the system is assumed to be dynamic. Stainless steel is known to be quasi inert to NO, as well as Teflon for tubing, ensuring that NO does not react with the walls of the chamber (Laville et al., 2011). This method has been widely used in the field, as reported for example in Davidson (1991), Serça et al. (1994), Serça et al. (1998), Jambert et al. (1997), Scholes et al. (1997), Laville et al. (2011).

Several different places at the site of Agoufou have been sampled. In June–July 2004, 180 fluxes were sampled. The chambers were placed on the soil, 90 with short vegetation inside, 90 over bare soil. In August 2005, 70 fluxes were sampled, mostly over vegetation, the whole site being covered by vegetation in the core of the wet season. Fluxes were sampled every day between June 30th and July 12th 2004 and between August 11th and August 13th 2005, in the morning and in the afternoon. Average values were calculated and reported in Table 3, with their standard deviations.

Following Davidson (1991) and Serça et al. (1994), the net flux is calculated from the slope of the increase of mixing ratio in ppb within the chamber, assuming that this increase is linear during several minutes (no chemical or deposition loss during that period), and that the air flow is constant. One should note that, as long as the air flow rate is constant, it does not need to be taken into account for the flux calculation (see below). Considering that the mass of NO within the chamber at time $t + dt$ is equal to the mass of NO present at time t , plus the mass of NO entering the chamber in the dt interval (soil flux), minus the mass of NO leaving the chamber in that same dt interval, if the air flow is constant, only the soil flux has to be taken into account in this mass balance.

$$F = \left(\frac{dC[\text{NO}]}{dt} \right) \left(\frac{VMN}{SRT} \right) \quad (1)$$

$dC[\text{NO}]/dt$ is the initial rate of increase in NO mixing ratio calculated by linear regression (ppbs⁻¹), MN is the nitrogen molecular weight (gmol⁻¹), $S=800 \text{ cm}^2$ is the surface of the chamber, $V=18\text{l}$ is the volume of the chamber, $R=0.082 \text{ cm}^3\text{atmmole}^{-1} \text{ K}^{-1}$ is the gas constant, $T(\text{K})$ is the air temperature in the chamber, F is the resulting flux in $\text{ng}(\text{N})\text{m}^{-2}\text{s}^{-1}$ (Serça et al., 1994).

NO mixing ratio in the chamber was measured using a ThermoEnvironment 42 CTL analyzer. This analyzer detects NO by chemiluminescence with O_3 . Detection limit and sensitivity is around 0.05 ppbv, as indicated in the guide, but Laville et al. (2011) found a sensitivity threshold of 0.1 ppbv for the same analyzer. Flow rate in the analyzer and the chamber is about 0.8 lmin^{-1} . Multipoint calibration was checked before and after each field experiment with a dynamical calibration system. Considering a sensitivity threshold of 0.15 ppbv, the minimum flux detected by this device would be $0.25 \text{ ng}(\text{N})\text{m}^{-2}\text{s}^{-1}$.

The magnitude of ozone mixing ratios is around 20 ppb in July, NO_2 mixing ratios around 2.5 ppb (Adon et al., 2010),

and NO_2 deposition velocity was estimated to be 0.13 cm s^{-1} (Adon et al. (2013), Delon et al. (2010)) at the Agoufou site. NO ambient mixing ratios (measured at 20 cm) during the 2004 field campaign were 0.60 ± 0.57 ppb (information not available for the 2005 field campaign). The NO flux is underestimated if neither deposition nor conversion to NO_2 through reaction with O_3 is taken into account, but the underestimation should be limited considering the low ozone mixing ratios, low NO_2 deposition velocities, and no direct radiative radiation in the opaque chamber. Pape et al. (2009) estimate that even for cases with a large absolute chemistry effect (meaning NO fluxes from soils up to $4 \text{ ng}(\text{N})\text{m}^{-2}\text{s}^{-1}$, with NO mixing ratios above 5 ppb and ozone mixing ratios between 15 and 20 ppb), the underestimation due to chemical effects is less than 50%. As a comparison, Laville et al. (2011) finds a maximum underestimation of 25%.

Laville et al. (2011) show that artefacts can be introduced when NO mixing ratios are high (up to 60 ppb). In our case, NO mixing ratios are much lower than the values indicated by these authors.

Unfortunately, it is not possible to precisely recalculate the underestimation of NO flux in our study since NO_2 mixing ratios measured by the 42C are not available anymore. However, following Laville et al. (2011) and Pape et al. (2009), we have calculated the underestimation with the mean climatological ozone mixing ratio found in Adon et al. (2010), which is 20 ppb in July, with $k=5.3210^{-4} \text{ ppb}^{-1}\text{s}^{-1}$ (reaction rate constant at 1013 hPa and 313K, estimated pressure and temperature in the chamber), and with the mean NO mixing ratio 0.6 ppb obtained with the field measurements in 2004. The mean underestimation ($k \cdot [\text{NO}] \cdot [\text{O}_3] = 5.32 \times 10^{-4} \times 20 \times 0.6 = 0.0064 \text{ ppbs}^{-1}$) is 7.6% of the mean slope (0.0847 ppbs^{-1} , obtained from equation 0). The mean underestimation is therefore estimated at 7.6%.

During summer 2004 (from June 30th to July 12th), NO daily fluxes ranged from 2.47 to $11.35 \text{ ng}(\text{N})\text{m}^{-2}\text{s}^{-1}$ (mean = $6.69 \pm 2.44 \text{ ng}(\text{N})\text{m}^{-2}\text{s}^{-1}$, Delon et al. (2007)). During summer 2005 (from August 11th to August 13th), NO fluxes ranged from 1.81 to $3.20 \text{ ng}(\text{N})\text{m}^{-2}\text{s}^{-1}$ (mean = $2.28 \pm 0.79 \text{ ng}(\text{N})\text{m}^{-2}\text{s}^{-1}$, unpublished data). In the following simulations, NO fluxes were not measured at Agoufou during years 2006 to 2008. However, since NO flux data are scarce, these field measurements from 2004 and 2005 will be helpful to give an order of magnitude of NO emission at the beginning and during the wet season.

3 Model description

3.1 Modelling approach

Biogeochemically based model of instantaneous trace gas production can be parameterized for individual sites, describing locally nitrification and denitrification processes responsible for emission, but more generalized models are needed

for the calculation of temporally or regionally integrated models (Potter et al., 1996). In that purpose, a new approach for the calculation of biogenic NO emissions from soils has been developed by Delon et al. (2007), in order to use general environmental parameters easily available as inputs. This approach was used at the regional scale to simulate pulse events in the Sahel (Delon et al., 2008) and at the yearly scale at several Sahelian sites (Delon et al. (2010), Laouali et al. (2012)). This approach has been partly inspired by the hole-in-the-pipe (HIP) concept, developed by Firestone and Davidson (1989), presenting the environmental parameters which control the variation of trace-N-gases by nitrification and denitrification with different levels of regulation, from proximal (e.g. mineralization, immobilization, respiration, plant uptake) to distal (e.g. pH, soil porosity, soil type,...). Using two functions based on soil N availability and soil water content, the HIP model characterizes a large fraction of the observed variation of NO emissions from soils (Davidson et al., 2000).

The NO emission model will be described in the following sections. In its previous version, (Delon et al., 2010), the N availability in the soil was driven by the N input at the surface (organic and livestock fertilisation) and considered constant in time (a similar amount of N was injected each month). In the new version, the N in the soil is calculated from buried litter (vegetation and feces) decomposition and varies in time, thanks to the coupling with the other models which provide vegetation and organic matter in a dynamic way. The N input used to calculate the NO flux is therefore more realistic than in the previous version where it was prescribed without any link with vegetation growth and decay. The link between vegetation, litter decomposition, microbial dynamics in the soil and NO emission is explained in the following sections.

The on line coupled models are presented here and used at the daily scale: the herbaceous and tree leaf masses are simulated using the Sahelian-Transpiration-Evaporation-Productivity (STEP) model, the buried litter decomposition and microbial dynamics is simulated in GENDEC, and the NO release to the atmosphere is simulated with the NOFlux model.

A schematic view of the model imbrications is given in Fig. 1. Inputs for each model are detailed in table 1 .

3.2 STEP

STEP is an ecosystem process model for sahelian herbaceous vegetation. In its current version, tree phenology (leaf mass set-up and fall) is also described by considering six phenological types which proportions must be known. This model is defined to be used at local or regional scale in order to simulate the temporal variation of the main variables and processes associated with vegetation functioning in sahelian savannas. In this study, the model will be used at the local scale. In previous studies, STEP has been coupled to radiative transfer models in the optical (Lo Seen et al., 1995) and active/passive microwave domain (Frison et al. (1998), Fri-

son et al. (2000)), allowing an indirect comparison of satellite observations and modeling results of the vegetation growth (e.g. Jarlan et al. (2002)). The performance of the STEP process model in predicting herbage mass variation over time and herbage yield along a north-south bio-climatic gradient within the Sahel was tested along a 15 years period, and gave high correlation coefficients between model and measurements when the model is calibrated for each site (Tracol et al., 2006). Modifications brought to the first version of the model have been given in Jarlan et al. (2008). The regional scale use of the model is illustrated in Jarlan et al. (2003) and Pierre et al. (2012).

STEP is driven by daily standard meteorological data obtained from site measurements in Agoufou (precipitations, global radiation, air temperature, relative humidity and wind speed), prepared for years 2004 to 2008. Site specific parameters like sand and clay percentage, pH, C3/C4 percentage, initial green biomass, initial dry biomass and initial litter, number of soil layers, initial water content in each layer, livestock composition (between 6 different categories, cattle, sheep, goats, donkeys, horses, camels) and livestock total load are given as input parameters (see table 1). The seasonal dynamics of the herbaceous layer, major component of the sahelian vegetation, is represented. The processes simulated are: water fluxes in the soil, evaporation from bare soil, transpiration of the vegetation, photosynthesis, respiration, senescence, litter production, and litter decomposition at the soil surface. Moreover, structural parameters such as vegetation cover fraction f_{Cover} , LAI (Leaf Area Index), and canopy height, are also simulated. A new development has been included in the model for the present study: soil temperatures are simulated from air temperature according to Parton (1984), and discussed below. Parton et al. (1984), report a simplified soil temperature model in a short grass steppe. This model requires daily max and min air temperature, global radiation (provided by forcing data), plant biomass (provided by the model), initial soil temperature, and soil thermal diffusivity. Thermal diffusivity (cm^2s^{-1}) is the ratio between thermal conductivity ($\text{Wm}^{-2}\text{K}^{-1}$) and volumetric heat capacity ($1500000 \text{ Jm}^{-3}\text{K}^{-1}$). Thermal conductivity for each layer i of the soil is

$$\text{Cond}(i) = -9.77 + 12.19 \times (\text{soilmoisture}(i))^{0.0528}.$$

Total above-ground herbaceous mass is divided into three components: aboveground green mass, standing dead (or dry) biomass, and litter biomass. Green biomass variations are controlled by the balance between total photosynthetic inputs expressed by the gross photosynthesis and total outputs due to respiration losses and senescence. Dry biomass results from the senescence of green material, minus litter production, ingestion by animals and burned biomass. Litter biomass accumulation is the result of dead material falling down on the soil, due to trampling and to climate conditions like rain, wind, and air temperature, minus litter burying and ingestion by animals, litter burning and litter decomposition due to insects, small mammals and climate conditions

(rain kinetic energy, soil humidity, air temperature and wind). Green vegetation growth starts at seedling emergence with an initial above ground biomass. The date of emergence is estimated from the number of days required for germination when the moisture content of the soil surface layer is above wilting point. The quantity of fecal matter is calculated from the livestock total load given as input parameter.

The quantity of carbon in the soil is calculated from the total litter input (from fecal and herbal mass), which is 50% of the buried litter mass. The quantity of nitrogen in the soil is derived from the quantity of carbon using the C/N ratio. A more detailed description of STEP can be found in Mougin et al. (1995), Tracol et al. (2006) and Jarlan et al. (2008). Information such as the quantity of fecal and herbal masses are transferred as inputs to GENDEC, the litter decomposition model.

3.3 GENDEC

GENDEC (for GENERAL DECOMPOSITION) is a general, synthetic model, which aim is to examine the interactions between litter, decomposer microorganisms, microbial dynamics and C and N pools, and to explore the mechanisms of decomposition in arid ecosystems. The decomposition of buried litter by micro organisms is the first step of the GENDEC model, giving access to the mineral C and N pools of the ecosystem. GENDEC has been specifically developed to reproduce these processes in semi arid ecosystems, where inputs of organic matter and soil moisture are low. The ultimate step, C and N mineralization, is fed by (1) decomposition of organic matter, and (2) growth, respiration and death of microbes (microbial dynamics). The general modelling approach is based on fundamental decomposition processes. Six pools of C and N are used in this model, representing dead organic matter (labile materials with high N content and rapid decomposition rate, cellulose and related materials with an intermediate decomposition rate and very little associated N, very slowly decomposing recalcitrant compounds with moderate levels of physically associated N, and dead microbiota with high N content and rapid decomposition), living microbial biomass (final pool of organic matter), and soil N for the nitrogen submodel (Moorhead and Reynolds, 1991). C/N ratio is different for each of these compartments, and is set to 10, 1000, 34, 8, 25 and 9 respectively for labile compounds, holocellulose, resistant compounds, dead microbial biomass, living microbial biomass and nitrogen pools, based on Moorhead and Reynolds (1991) and experimental results from the Agoufou site detailed below. Flows between these pools are driven by empirical relationships according to characteristics of the microbial community. Climatic parameters such as soil moisture and soil temperature are important drivers for C and N dynamics. The model describes the processes underlying the interactions between C substrate, principal decomposers and nutrients that ultimately result in mineralization. Decomposition and microbial metabolic rates

increase with increasing moisture availability, (at least until saturation leads to anaerobic conditions) and with increasing temperature (at least at temperature below 30-40C). The dynamics of the soil N pool gives the net mineralization. The model emphasizes the association between C and N dynamics and microbial processes. Wetting drying events increase the turnover of microbial processes, stimulate C mineralization, and involve a short term carbon dynamics since soil organic matter and nitrogen content are low. Microbial growth and respiration are function of total carbon available, i.e. total C losses from the litter. Mineral N used to calculate NO release to the atmosphere is directly linked to mineral C used to calculate the respiration of microbes (*i.e.* CO₂ release).

GENDEC is driven by organic matter input coming from four different boxes in STEP: buried litter (herbs and tree leaves), trees, fecal matter, and dry herb roots. It is also driven by soil temperature and soil water potential calculated in STEP. Input parameters include the assimilation efficiency and the microbial mortality rate (see table 1). At last, mineral nitrogen, total quantities of C and N, respiration are obtained for each box (buried herbaceous litter, buried leaf trees, dry roots and fecal matter). The addition of these four contributions gives access to the total C and N in the soil. Organic carbon is assumed to be the sole source of energy and substrate for heterotrophic microbial growth. Organic matter mineralization driven by heterotrophic activity of soil microorganisms releases mineral nitrogen. This is the starting point for the calculation of nitrogen transformations in soils (Blagodatsky et al., 2011). The mineral nitrogen is then used as an input in the NOflux model described below.

3.4 NOflux

The NO biogenic emissions from soils is calculated with an emission algorithm derived from a neural network (Delon et al., 2007). The equation is detailed below. NO flux is a function of soil moisture, soil temperature at two depths (5 and 20-30 cm), wind speed, soil pH, sand percentage, and fertilization rate (quantity of nitrogen given as input to the soil).

$$\text{NOfluxnorm} = w_{24} + w_{25}\tanh(S1) + w_{26}\tanh(S2) + w_{27}\tanh(S3)$$

Where NOfluxnorm is the normalized NO flux. The normalization is used for all inputs and output to give them the same order of magnitude and facilitate the calculation process (Delon et al., 2007).

$$S1 = w_0 + \sum_{i=1}^7 w_i x_{j,norm}$$

$$S2 = w_8 + \sum_{i=9}^{15} w_i x_{j,norm}$$

$$S3 = w_{16} + \sum_{i=17}^{23} w_i x_{j,norm}$$

j is 1 to 7, x_{1,norm} to x_{7,norm} correspond to the seven normalized inputs, as follows:

$$j=1: x_{1,norm} = c_1 + c_2 \times (\text{surface soil temperature}),$$

$$j=2: x_{2,norm} = c_3 + c_4 \times (\text{surface WFPS}),$$

$$j=3: x_{3,norm} = c_5 + c_6 \times (\text{deep soil temperature}),$$

$$j=4: x_{4,norm} = c_7 + c_8 \times (\text{fertilisation rate}),$$

j=5: $x_{5,\text{norm}} = c_9 + c_{10} \times (\text{sand percentage}),$

600 j=6: $x_{6,\text{norm}} = c_{11} + c_{12} \times \text{pH},$

j=7: $x_{7,\text{norm}} = c_{13} + x_{14} \times (\text{wind speed}).$

655

Weights w and normalisation coefficients c are given in table 2.

WFPS = Water Filled Pore Space.

605 The resulting NO flux is obtained after de-normalization of NOfluxnorm (NOFlux = $x_{15} + x_{16} \times \text{NOfluxnorm}$). 660

A CRF is applied to the NO flux. The CRF ranges between 1 (no reduction because no vegetation, LAI = 0) and 0.83 (LAI = 1.8 at the most, Mougin et al. (2014)). Considering the CRF applied, the maximum quantity of N re-deposited above canopy during the wet months when LAI is at its maximum is negligible compared to the total N input from fecal, herbal and root masses. Indeed, in the data used in this work, the proportion of N re-deposition compared to total N input ranges between 0.24% and 1.5%, depending on the year.

610

615

In this study, we use a new approach to calculate the fertilization rate (this input was given as constant in the previous versions of the algorithm). This approach is based on the one of Potter et al. (1996), who have developed an extended version of the CASA (Carnegie Ames Stanford) model, where potential emission of total nitrogen trace gases ($N_T = \text{NO} + \text{NO}_2 + \text{N}_2\text{O} + \text{N}_2$) at the soil surface is treated as a given percentage (2%) of gross mineralized nitrogen at any given time step (this corresponds to the definition of the emission factor). This version of the simple conceptual model is not designed to distinguish between nitrification and denitrification as sources of N gases. In order to adapt this approach to our own study, we made the assumption that the sandy soil texture in Agoufou favours predominantly aerobic conditions and subsequently nitrification processes (Li et al. (2000), Blagodatsky et al. (2011)). Furthermore, the WFPS remains below 20% (volumetric soil moisture below 10%), and according to Davidson (1991) the total oxidized N emitted would be composed of 95% to 100% of NO.

620

625

630

635

In the present work, we have adapted the concept developed in CASA in a different way: the fertilization rate (*i.e.* N entering the soil and further available for NO emission) is 2% (same percentage as in Potter et al. (1996)) of the mineral N content in the soil (which depends both on N input and N content). The mineral N is obtained from STEP-GENDEC calculations. The main difference between Potter et al. (1996) approach and the one of this study is that the NO emission is now modulated by additional parameters such as pH and wind speed, as well as soil moisture and temperature which have an impact on both mineralization and emission. When soil moisture is too low, microbial respiration is blocked in the model, microbial dynamics is frozen, and mineralization is stopped. If the value of mineral N is 0, a minimum value of 0.01 gm^{-2} is applied as a first guess in the NOFlux model to avoid null values of NO emission. Indeed, very little is known about mineral N dynamics and subsequent NO emission at low soil moisture, but experimental

640

645

650

studies show low emission even during the dry season (Scholes et al., 1997).

The principal advantage of this NO parameterization is to depend on different factors at two levels. The first level concerns climatic impacts and environmental parameters, such as precipitations, soil texture and pH, temperatures, wind speed, and the second level concerns intrinsic processes of N turnover in the soil, through the organic matter degradation from vegetation and livestock, and the microbial dynamics. The majority of the first level variables are easily available on site or/and from atmospheric model reanalysis and global databases, the second level is a sophistication of the model, making it possible to add biotic processes in this parameterization of NO emission.

4 Results and discussion

Several parameters, included in the NO emission model, play an important role in modulating emission. These parameters can be classified in two categories: physical parameters (soil moisture and temperature, wind speed, sand percentage) which affect substrate diffusion and oxygen supply in the soil and influence the microbial activity (Skopp et al., 1990), and biogeochemical parameters (pH and fertilization rate related to N content). In this paragraph, we will discuss the reliability of the simulated variables, in order to assess the robustness of the simulated NO flux.

4.1 Soil moisture

Soil moisture has a strong influence on NO emission from soils, particularly in hot and dry regions, at the global, regional, or local scale (Williams et al. (1992), Yienger and Levy (1995), Meixner et al. (1997), Hartley and Schlesinger (2000), Yan et al. (2005), Feig et al. (2008), Hudman et al. (2012)). This variable needs to be well reproduced by the model in order to calculate reliable NO release. Volumetric soil moisture is calculated by STEP at different soil layers, using a tipping bucket approach. Fig. 2 shows the volumetric soil moisture calculated by STEP between 0 and 2cm from 2004 to 2008, compared to the volumetric soil moisture measured at Agoufou at 5cm depth in 2005, 2006, 2007 and 2008. From 2006 to 2008, these measurements are actually an average of 3 datasets from soil moisture probes operating at the top, middle and bottom locations of dune slopes. In 2005, only bottom slope data were available.

The comparison between STEP and measurements in Fig. 2 is not direct, because depths are not exactly equivalent. Indeed, it is in general quite difficult to have in situ soil moisture measurements in the very first soil centimetres especially over sandy soils. Despite this, the comparison gives satisfying results from 2005 to 2008. In the surface layer, the measurements reach 10 to 12% during summers and show lower values during the dry season than those calculated by

STEP. A threshold at 8% is observed on the STEP plot. This value corresponds to the field capacity calculated by STEP. In reality, this theoretical value may be overstepped during short periods of time after a rainfall event, and water is not systematically transferred to the layer underneath. In the model, when the field capacity is reached, the excess water is transferred to the second layer, between 2 and 30 cm. The higher soil moisture peaks observed in the measurements as compared to STEP may be also due to the deeper soil depth at which the measurements are taken. For all years, the model is consistent and correctly reproduces the temporal dynamics, the increase and decrease of the soil moisture are well in phase, and the filling and emptying of the surface layer is reasonably well represented. The determination coefficient between model and measurements R^2 is 0.70 for the considered period (5 years).

4.2 Soil temperature

Soil temperature is also an important variable for modelling NO emissions from soils. In tropical regions, emissions are mostly driven by soil moisture, but temperature influence has to be taken into account, especially during the dry season when soil moisture is very low (Butterbach-Bahl et al. (2004b), Yao et al. (2010)). Fig. 3 shows the soil temperature calculated in the two first STEP layers and compared to measurements at 5 and 30 cm at Agoufou from 2005 to 2008. Temperatures at both levels are needed in the NOFlux model. The seasonal cycle is well reproduced by the model, with some missing high frequency variations due to rain events during the wet season. The determination coefficient R^2 between the simulated and measured temperatures in the surface layer is 0.86, and 0.82 in the 30 cm layer, showing a good representation of temperature at both levels in the model.

4.3 Aboveground and litter vegetation

The temporal variation of the green living biomass, dry standing biomass (or standing straw), surface litter and buried litter is simulated and compared to measurements at Agoufou (except for buried litter because no measurements are available). Green biomass begins to increase between June 20 to 25 for years 2004 and 2005, and between July 10 to 15 for years 2006 to 2008, when the surface soil moisture is above the wilting point during 5 consecutive days (green in Fig. 4). In 2004, 2005, 2006, 2007 and 2008 respectively, the cumulative rain is 191, 418, 376, 286, and 227 mm. The maximum of green biomass simulated by STEP is 80, 205, 192, 161 and 104 $\text{g}(\text{d.m.})\text{m}^{-2}$ (d.m.=dry matter), when the respective measurements give 47, 224, 174, 150 and 82 $\text{g}(\text{d.m.})\text{m}^{-2}$ in 2004, 2005, 2006, 2007 and 2008. In 2004, two distinct growing phases are simulated, corroborated by measurements. Indeed, the first green biomass growth is interrupted due to a lack of rainfall, and starts again later in the

season. The maximum simulated green biomass value seems to be slightly late in 2006 and 2007, and early in 2008, compared to measurements, whereas the seedling emergence is correctly simulated for these three years. In 2008, the quantity of precipitation is lower, but the soil moisture is sufficient to trigger seedling emergence in the model. Overall, simulations and measurements are in good agreement with $R^2 = 0.72$ for green biomass for the five years.

The change over time of the herbaceous standing mass is driven by mechanical and biological degradation, influenced, among other causes, by livestock grazing. Forage consumption and trampling by livestock have major effects on herbage offtake, decay and decomposition including seed dispersal (Tracol et al., 2006). The STEP model allows the drying from green to dry standing biomass, and the degradation of the dry biomass by livestock. The minimum value for the initialization of dry standing biomass in 2004 is 10 $\text{g}(\text{d.m.})\text{m}^{-2}$. The increase of the senescent aboveground biomass at the end of the wet season is well reproduced by the simulation (light blue in Fig. 4). R^2 between simulations and measurements is 0.56 for dry standing biomass for the five years of simulation. The maximum of dry standing biomass is underestimated in 2006 and 2008 and well reproduced in 2004 (despite a particular feature) and 2007. No measurements were available for year 2005.

The minimum value for the initialization of the surface litter in 2004 (red in Fig. 4) is 30 $\text{g}(\text{d.m.})\text{m}^{-2}$. The maximum value is encountered in December-January (end of november in 2004). Litter decay is sharper in the measurements than in the simulation, with minimum occurring in the middle of the wet season. R^2 between simulations and measurements is 0.5 for litter for the five years of simulation.

The evolution of simulated buried litter (dark blue in Fig. 4) is closely linked to that of surface litter. The first days of rain induce a sharp decrease of buried litter, which is rapidly decomposed. The minimum is observed in september (august in 2004), when it begins to increase again with the surface litter accumulation. That accumulation feeds the C and N pools, and is the N resource for soil mineral N and N losses to the atmosphere.

The evaluation of the model in terms of vegetation dynamics, quantity, and production of surface litter seems to be reliable, despite time lags in some cases. Therefore, the quantity of organic matter (via the buried litter), likely to be degraded and to produce N in the soil, can be considered as correctly reproduced by the model.

4.4 N content in the soil

The N content calculated by the model has been compared to N content analysis made on 35 different soil samples in Agoufou (sampled in July 2004). Results from soil samples give a mean total N content of $0.20 \pm 0.14 \text{ g kg}^{-1}$ (or 0.02%), with a mean C/N ratio of 9.80 ± 1.11 . Diallo and Gjessing (1999) have mentioned 0.011% of total N in sandy soils of

the Gourma region, where Agoufou is situated. However, the few studies performed on arid or semi arid soils showed that high microbial metabolism and high turnover rates of little nutrients might be major explanatory factors of the observed NO fluxes (Meixner and Yang (2006) and references therein). In the model, the total soil N content is the sum of mineral N, organic N and microbial N (Fig. 5). To convert the model output in g(N)m^{-2} to percentage, we assume a density of 1500 kgm^{-3} for the soil, according to De Rosnay et al. (2009), and we apply this value to the first 2 cm of the soil (first layer in the model). Yearly means range from 0.016% in 2004, 0.023% in 2005, 0.030% in 2006 to 0.035% in 2007 and 2008. To compare directly to measurements, we have calculated the average for the 15 first days of July in the model, and obtained 0.020% in 2004, 0.022% in 2005, 0.031% in 2006 to 0.037% in 2007 and 2008, values that are representative of the beginning of the wet season, and very close to measurements at the same dates. It is rather difficult to find direct comparisons to ensure the model initializations in terms of N content and N dynamics in the region of the Sahel. However, some studies like De Bruin et al. (1989) and Krul et al. (1982) show from incubation results that after the long dry season the soil contains approximately 14 kg(N)ha^{-1} (approximately 0.005%, lower than our results) in the first 10 centimeters, and the nitrogen flush after the intensive first rains is about 7 to 8 kg(N)ha^{-1} . In the next paragraph, we will see that our results imply the same kind of emissions at the beginning of the wet season, which gives confidence on the robustness of the N dynamics reproduced by GENDEC.

4.5 NO emission from soil to the atmosphere

4.5.1 Seasonal and yearly cycle of NO emissions

As explained above, the quantity of N due to the decomposition of buried litter and fecal biomass and to the microbial turnover is calculated in GENDEC, and therefore used to parameterize the NO emissions from soil (see Fig. 6 for 2004 to 2008). Yearly and wet season (from June 1st to September 30th) averages are reported in Table 3. The largest emission (up to $24 \text{ ng(N)m}^{-2}\text{s}^{-1}$) occurs at the beginning of the wet season. Indeed, as shown in Fig. 6, the first rains induce a sharp increase in soil surface moisture until saturation, followed by a subsequent drying out of the surface layer until the following rain event. The organic matter, brought by the buried litter, is suddenly decomposed when the soil moisture is sufficient, and produces a NO pulse to the atmosphere. This kind of process has already been highlighted by *e.g.* Butterbach-Bahl et al. (2004b) in a rain forest where a huge amount of litter that had accumulated during the long-lasting dry period of the year before was intensively decomposed with the onset of rainfall.

After these peaks, in the core of the rain season, though additional rainfall events, less N is released to the atmosphere

and NO emissions decrease. Fig. 7 shows the mineral N behaviour together with the rainfall amount. First rains and rains after a short break lead to a sharp increase in mineral N content (in gm^{-2}), whereas frequent rains in the core of the wet season do not stimulate mineral N in the same proportion. Furthermore, Krul et al. (1982) have shown that when the soil moisture is sufficient to allow the growth of the vegetation, the mineral N in the soil is taken by the plants (not numerically represented in this version of the model), in competition with the assimilation by microbes, and therefore less released to the atmosphere.

After the end of the wet season, when the maximum of green biomass is reached, the vegetation starts to dry out while still standing, then falls on the surface and begins to decompose since the soil surface moisture is still relatively high. The vegetation decomposition at that moment is responsible for the peak of emission observed in the late wet/early dry season. Afterwards, the soil surface moisture decreases, leading to low NO emissions. During the dry season, emissions are reduced, but still present, and mostly driven by surface temperature. Actually, the influence of temperature also exists during the wet season at a diurnal time step (as already highlighted by Ludwig et al. (2001) for different data), but is dominated by soil moisture effect. This temperature effect is better described later on in the sensitivity tests paragraph.

Though the strong dependance of NO fluxes on soil moisture, the total rainfall amount in a year does not appear to be essential for the amplitude of the fluxes. Indeed, though 2008 rainfall amount is less important than in 2005, 2006 and 2007, the annual and wet season NO flux averages are larger in 2008. This is not the case in 2004, and could be attributed to the fact that 2008 wet season begins earlier and ends later than in the other years, allowing more efficient and more frequent pulse events.

Some wet season measurements performed at Agoufou in July 2004 and August 2005 are reported in Table 3. The model underestimates the measurements in 2004 (10 days in July), and overestimates them in 2005 (3 days in August). However, modelled fluxes are in the range of measured fluxes. In Table 3, they are compared to other measurements made in other types of semi arid ecosystems, and to wet season measurements in Banizoumbou (Niger), situated in a dry savanna site and presenting the same type of vegetation (Delon et al., 2012). Data from this study are also compared to other simulations done with the ISBA model (Interactions Soil Biosphere Astmosphere) used to simulate emission and deposition N fluxes in dry savannas in a previous study (Delon et al. (2010) and Delon et al. (2012)), where the N input (fertilization rate) was constant in time, and equivalent to $5.5 \text{ kg(N)ha}^{-1}\text{yr}^{-1}$ ($17.4 \text{ ng(N)m}^{-2}\text{s}^{-1}$).

These results show that the coupled STEP-GENDEC-NO model gives fluxes in the order of known experimental or simulated data, while not exactly equivalent to measurements at the Agoufou site in 2004 and 2005. Several studies

have shown different ranges of NO fluxes, but always with a strong link to soil moisture, especially in tropical regions where distinct dry and wet seasons exist, and where large pulses of NO emissions occur at the onset of the rainy season (Ludwig et al. (2001), Otter et al. (1999), Meixner et al. (1997), Yang and Meixner (1997), Meixner and Yang (2006), Van Dijk et al. (2002) as examples in tropical and semi arid regions). As a comparison, Butterbach-Bahl et al. (2004b) found average fluxes of $57 \text{ ng(N)m}^{-2}\text{s}^{-1}$ in tropical forests soils at the transition between dry and wet season, where the quantity of decomposed litter is far greater than in dry savanna sites of the Sahel, and where the nutrient content of the soil is far larger, since semi arid soils are generally nutrient poor.

The ratios of fluxes from wet to dry seasons in this study are 2.3, 2.9, 3.0, 3.1 and 3.0 respectively for the years 2004, 2005, 2006, 2007, 2008, in the (lower) range of what has been reported in the literature (Meixner and Yang, 2006), but showing undoubtedly the difference between the two periods in terms of emission.

4.5.2 Sensitivity tests

Several sensitivity tests have been performed in the NOFlux model to highlight the effects of soil temperature, soil humidity, and mineral N content on the NO flux to the atmosphere. The sensitivity of NO emission to deep soil temperature and wind speed will not be shown here, because their influence on NO emission is less important. In the first example (Fig. 8), soil moisture is set successively to a low (2%) and a high (10%) value, associated respectively to a low (0.01 gm^{-2}) and a high (0.1 gm^{-2}) value of mineral N content in the soil. The associated high and low values of mineral N with soil moisture have been chosen according to realistic outputs given by the GENDEC model (see Fig. 7), and corresponding to dry and wet season quantities. The results are shown for year 2006 only, to lighten the figures, because 2006 is a standard year in terms of pluviometry, and the same conclusions would appear anyway for the other years. When soil moisture is low and constant (associated to low and constant mineral N content), NO fluxes are only driven by soil temperature at high (diurnal) frequency. Pulses usually linked to soil moisture variation do not occur and the mean value of the flux remains low. When soil moisture is high (associated to a high value of mineral N content), the mean value of the flux is larger, directly resulting from high mineral N content. The seasonal cycle of fluxes is not correlated to the seasonal cycle of soil temperature, as already found by Meixner and Yang (2006) (low frequency variation), whereas their diurnal cycle are correlated, in accordance with previous studies. As an example, Ludwig et al. (2001) have stated that soil temperature fluctuations can explain short term variations of NO fluxes.

In the second example (Fig. 9), soil moisture and mineral N content are not forced, soil surface and bottom tempera-

tures are set successively to both a low (33°C and 32°C respectively) and a high (48°C and 47°C respectively) value, for the year 2006. These temperatures correspond to possible values encountered during the dry and wet seasons. At the beginning of the year, during the dry season, the soil moisture is low, and fluxes are constant if soil temperature is constant. During both seasons, the lowest NO fluxes are found for the highest values of soil temperature, even if differences are reduced between mean annual fluxes (1.08 vs $0.69 \text{ kg(N)ha}^{-1}\text{yr}^{-1}$, *i.e.* 3.42 vs $2.19 \text{ ng(N)m}^{-2}\text{s}^{-1}$ for $T=33$ and $T=48^\circ\text{C}$ respectively) despite a large temperature difference (15°C). Temperature effect on NO emissions has been studied in other circumstances, and is still under debate still no clear conclusion could be raised. Contrasted results have been found in tropical and temperate regions: most studies have shown that NO emissions increase with increasing temperature as reported for example in Martin et al. (1995), Meixner and Yang (2006), and Van Dijk and Meixner (2001), other studies do not find any clear tendency (Cardenas et al. (1994), Sullivan (1996)), while Butterbach-Bahl et al. (2004b) find a linear relationship during only certain periods of the year in a tropical rain forest. Temperature effect in our study is moderate in dry season, and almost not visible in wet season.

In addition, soil pH effects have also been tested (not shown here), within a reasonable range of pH from 6.1 to 8. Pulse effects and modulation by soil temperature present the same feature as in the reference case, with a slight decrease of the base level when pH increases. Serça et al. (1994) and Yan et al. (2005) have also found the same kind of variation, with decreasing emissions while increasing pH in tropical soils.

Sensitivity tests of the NO emission model used in this study have already been explored in Delon et al. (2007) for the elaboration of the model. The most straightforward conclusion from these tests is that soil moisture is the main driver for NO fluxes in the particular conditions of semi arid soils (with immediate effect on soil N content), modulated by soil temperature effect (mostly visible during the dry season) and adjusted by soil pH and wind effects.

5 Limitations and uncertainties

Estimating NO fluxes in semi arid regions through modeling studies remains a difficult exercise, considering the scarcity of data. Uncertainties in the calculation of NO fluxes in the model are related to uncertainties on the main drivers of NO emission, *i.e.* soil moisture, and mineral N. Furthermore, the mineral N concentration in the soil is also driven by soil moisture. The uncertainty on the NO flux has been estimated around 20% when calculated with the present algorithm (Delon et al., 2010). Despite the scarcity of validation flux measurements, and of data on N cycle in the soil, this work gives results that can be added to the existing knowledge on emis-

1020 sion processes. Simulated fluxes are in the order of magni-
tude of previous measurements performed in the same semi
1025 arid region. As mentioned in Davidson et al. (2000), a model
based on regression parameters between NO emissions and
nitrogen cycling in the ecosystem will have only order of
1030 magnitude prediction accuracy. The temporal variation of
the quantity of live and dry biomass (straw and litter) have
1035 been accurately compared to measurements, but the case is
different for the seasonal cycles of the N pools in the soil.
Comparisons have been made with the available experimen-
1080 tal data at a given time, but do not give access to the whole
yearly cycle. The mineral N concentration in the soil used
as input in the calculation of NO fluxes is set to zero by the
model during the dry season because the respiration of mi-
crobes is blocked when soil moisture is too low. In this work
1085 it was set to a non zero value to avoid null NO fluxes. This
value should be moderated and readjusted according to ex-
perimental results of available nitrogen in the soil during the
dry season.

While the STEP model was initially designed for 1D-
1090 simulations in well documented study sites, it has also been
recently used at the regional scale in the Gourma region to
produce maps of vegetation biomass by Jarlan et al. (2003),
and in the Sahelian belt (12° N-20° N; 20° W-35° E) by
Pierre et al. (2012) and Pierre et al. (2011), to estimate
1095 the amount of dust emissions in that region. The NO flux model
has also been applied in the region of Niamey, Niger (De-
lon et al., 2008), to reproduce NO pulses at the beginning
of the wet season, and their impact on ozone formation during
the AMMA field campaign in 2006. Furthermore, it has been
1100 used at the regional scale in the Sahel (Delon et al., 2010) and
in West Africa (Delon et al., 2012) to calculate NO release
to the atmosphere. Concerning the GENDEC model, it has been
successfully applied for situations very different from those
upon which it was based (Moorhead and Reynolds (1993),
1105 Moorhead et al. (1996)). In other words, we can seriously
consider using this coupled STEP-GENDEC-NOflux model
in the Sahelian belt by making approximations, concerning
for example biomass, livestock, N and C pools. Considering
the need of information in this region of the world, it would
1110 be conceivable to simulate such processes of emissions at a
larger scale. The challenge is worth to be done, knowing that
NO emissions participate at a larger scale to the production
of tropospheric ozone.

6 Conclusions

1065 The present work is an attempt to estimate NO fluxes in the
semi arid region of the Sahel. Simulations are performed at
the site of Agoufou (Mali), with a coupled vegetation–litter
1120 decomposition–NO emission model, for years 2004, 2005,
2006, 2007 and 2008. The vegetation model STEP correctly
reproduces the temporal dynamics of soil moisture in the first
1070 layer of the model (layer involved in the soil N cycle), as well

as the increase and decrease, and the filling and emptying of
the surface layer. The temperature in the first two layers of
the model are also in accordance with measurements. The
green and dry biomass calculated by STEP show a correct
feature when compared to measurements in terms of vege-
tation growth, vegetation quantity, decay and production of
litter, despite slight time lags in the peak of green biomass for
the years 2006 and 2008. The quantity of N is calculated in
GENDEC, and is directly derived from organic matter and
C contents, both quantities calculated from litter degradation
and microbial dynamics in the soil. Sahelian soils are usually
considered as N poor, and the comparison of the N content in
the soil calculated in GENDEC (around 0.2–0.3%) is well in
accordance with experimental values, and with the few refer-
ences found in the literature. The coupling between the three
models is successful, and well adapted to the specific func-
tioning of semi arid ecosystems, where mechanistic models
have usually not been tested. The biomass management in
the Sahel is also driven by the presence of livestock, which
provides fecal biomass and buries surface litter by tram-
pling.

The quantity of N in the soil is the consequence of the pres-
ence of vegetation and livestock at the surface, and mineral
N constitutes the N pool available for N release to the atmo-
sphere, in the form of NO (and other compounds). The NO
flux calculated by the model is of course highly dependent on
soil moisture, as well as on mineral nitrogen, and a 2% frac-
tion of this pool is used as input to calculate the NO release,
modulated by the effect of environmental parameters such
as wind speed, soil moisture and temperature, pH and sand
percentage. Simulated NO emissions during the wet season
are in the same order as previous measurements made in sev-
eral sites where the vegetation and the soil are comparable to
the ones in Agoufou. Measurements during the dry season
are even scarcer in the literature than during the wet season,
which complicates even more the validation of the modelling
results. However, the annual budget of emissions is mostly
dominated by emissions occurring during the wet season, as
already highlighted in different studies in semi arid regions.

This modelling study has been strengthened at each step
of the calculation process by comparison with experimental
values. It would be necessary to obtain more measurements
through field campaigns, especially for the N content in the
soil, the grazing pressure, the soil N uptake by plants, and
the concentrations and fluxes of N compounds in the atmo-
sphere. Taking into account the difficulty of organizing field
campaigns in these remote regions, modelling is an essential
tool to link N cycles both in the soil and in the atmosphere,
and to understand specific processes involved in semi arid re-
gions. This study is a step forward in the representation of
biogenic NO release to the atmosphere in semi arid regions,
where processes of emissions are usually adapted from tem-
perate regions, and not specifically designed for semi arid
ecosystems.

- 1125 *Acknowledgements.* The authors thank the reviewers and the editor
S. Noe for their help in improving the manuscript. Special thanks to
Corinne Jambert for her wise and useful advices on flux measure-
ment techniques. D. Moorhead is also acknowledged for providing
us with the GENDEC model. 1185
- 1130 **References**
- Adon, M., Galy-Lacaux, C., Yobou, V., Delon, C., Lacaux, J. P.,
Castera, P., Gardrat, E., Pienaar, J., Al Ourabi, H., Laouali, D.,
Diop, B., Sigha-Nkamdjou, L., Akpo, A., Tathy, J. P., Lavenu,
F., and Mougin, E., Long term measurements of sulfur diox-
ide, nitrogen dioxide, ammonia, nitric acid and ozone in Africa, 1195
using passive samplers, *Atmos. Chem. Phys.*, 10, 74677487,
doi:10.5194/acp-10-7467-2010, 2010.
- Adon M., C. Galy-Lacaux, C. Delon, V. Yoboue, F. Solmon, and
A. T. Kaptue Tchente, Dry deposition of nitrogen compounds
(NO₂, HNO₃, NH₃), sulfur dioxide and ozone in west and central 1200
African ecosystems using the inferential method, *Atmos.
Chem. Phys.*, 13, 1135111374, 2013.
- Blagodatsky S., R. Grote, R. Kiese, C. Werner, and K. Butterbach-
Bahl, Modelling of microbial carbon and nitrogen turnover in
soil with special emphasis on N-trace gases emission, *Plant Soil*, 1205
346:297–330, 2011.
- Butterbach-Bahl, K., Kesik, M., Miehle, P., Papen, H., Li, C., Quan-
tifying the regional source strength of N-trace gases across agri-
cultural and forest ecosystems with process based models. *Plant
Soil* 260, 311-329, 2004a. 1210
- Butterbach-Bahl, K., Kock, M., Willibald, G., Hewett, B.,
Buhagiar, S., Papen and co-authors, Temporal variations of
fluxes of NO, NO₂, N₂O, CO₂ and CH₄ in a tropical rain
forest ecosystem. *Global Biogeochem. Cycles* 18, GB3012,
doi:10.1029/2004GB002243, 2004b. 1215
- Butterbach-Bahl, K., Kahl M., Mykhayliv L., Werner C., Kiese R.,
Li C., A European-wide inventory of soil NO emissions using the
biogeochemical model DNDC/Forest-DNDC, *Atmos. Environ.*
43, 1392-1402, 2009.
- 1160 Cardenas, L., Rondon, A., Johansson, C. and Sanhueza, E. Effects
of soil moisture, temperature and inorganic nitrogen on nitric ox-
ide emissions from acidic tropical savannah soils. *J. Geophys.
Res.* 98, 14 78314 790, 1994.
- Conrad R., 1996, Soil microorganisms as controllers of atmospheric
trace gases (H₂, CO, CH₄, OCS, N₂O, and NO), *Microbiolog-
ical reviews*, 60, 609-640. 1225
- Conrad R., 1994, Compensation concentration as critical variable
for regulating the flux of trace gases between soil and atmo-
sphere, *Biogeochemistry* 27: 155-170.
- 1170 Davidson E.A., Fluxes of nitrous oxide and nitric oxide from ter-
restrial ecosystems. In: *Microbial Production and Consump-
tion of Greenhouse Gases: Methane, Nitrogen Oxides and
Halomethanes* (eds. J. E. Rogers and W. B. Whitman) American
Society for Microbiology, Washington, 219235, 1991.
- 1175 Davidson, E. A. and Kinglerlee, W.: A global inventory of ni-
tric oxide emissions from soils, *Nutr. Cycl. Agroecosys.*, 48,
3750,1997.
- Davidson E.A., M. Keller, H.E. Erickson, L.V. Verchot, E. Veld-
kamp, Testing a conceptual model of soil emissions of nitrous
and nitric oxides, *Biosciences*, 50, 8, 667-680, 2000.
- De Bruin B., F.W.T. Penning de Vries, L.W. Van Broekhoven, N.
Vertrgt and S.C. Van de Geijn, Net mineralization, nitrification
and CO₂ production in alternating moisture conditions in an un-
fertilized low humus sandy soil from the Sahel, *Plant and Soil*,
113, 69–78, 1989.
- Delmas R., V.-H. Peuch, G. Megie, G.P. Brasseur, Chap. 5 Emis-
sions anthropiques et naturelles et dépôts, in *Physique et chimie
de l’atmosphère*, Eds Belin, ISBN: 2-7011-3700-4, 1995 (in
french).
- Delon, C., Serça, D., Boissard, C., Dupont, R., Dutot, A., Laville,
de Rosnay, P., and Delmas, R.: Soil NO emissions modelling
using artificial neural network, *Tellus B*, 59B, 502–513, 2007.
- Delon, C., Reeves, C. E., Stewart, D. J., Serça, D., Dupont, R., Mari,
C., Chaboureau, J.-P., and Tulet, P.: Biogenic nitrogen oxide
emissions from soils-impact on NO_x and ozone over West Africa
during AMMA (African Monsoon Multidisciplinary Analysis):
modelling study, *Atmos. Chem. Phys.*, 8, 2351–2363, 2008.
- Delon C., C. Galy-Lacaux, A. Boone, C. Liousse, D. Serça, M.
Adon, B. Diop, A. Akpo, F. Lavenu, E. Mougin, and F. Timouk,
Atmospheric nitrogen budget in Sahelian dry savannas, *Atmos.
Chem. Phys.*, 10, 26912708, 2010.
- Delon C., C. Galy-Lacaux, M. Adon, C. Liousse, D. Serça, B. Diop,
and A. Akpo, Nitrogen compounds emission and deposition in
West African ecosystems: comparison between wet and dry sa-
vanna. *Biogeosciences*, 9, 385402, 2012.
- De Rosnay, P., Gruhier, C., Timouk, F., Baup, F., Mougin, E., Hi-
ernaux, P., Kergoat, L., LeDantec, V. Multiscale soil moisture
measurements at the Gourma meso-scale site in Mali. *J. Hydrol.*
375 (12), 241252, 2009.
- Diallo A. and J. Gjessing, Natural resources management: Morpho-
pedology in Gourma region. SSE Research program Mali-
Norway, CNRST-IER-Oslo University (Norway), 1999 (in
French).
- Feig G.T., B. Mamtimin, and F. X. Meixner, Soil biogenic
emissions of nitric oxide from a semi-arid savanna in South
Africa, *Biogeosciences*, 5, 17231738, doi:10.5194/bg-5-1723-
2008, 2008.
- Firestone M.K. and E.A. Davidson, Microbial basis of NO and
N₂O production and consumption in soil, Pages 721 in Andreae
MO, Schimel DS, eds. *Exchange of Trace Gases between Ter-
restrial Ecosystems and the Atmosphere*. New York: John Wiley
and Sons, 1989.
- Fowler D., Pilegaard K., Sutton M.A., Ambus P., Rainoven M.,
Duyzer J., Simpson D., and 50 others, Atmospheric composition
change: Ecosystems-Atmosphere interactions, *Atmos. Environ.*,
43, 5193-5267, 2009.
- Frison, P.L., Mougin, E., Hiernaux, P., Observations and interpreta-
tion of ERS wind-scatterometer data over northern Sahel (Mali).
Remote Sens. Environ. 63, 233242, 1998.
- Frison P.-L., E. Mougin, L. Jarlan, M. A. Karam, and P. Hier-
naux, Comparison of ERS Wind-Scatterometer and SSM/IData
for Sahelian Vegetation Monitoring, *IEEE TRANSACTIONS
ON GEOSCIENCE AND REMOTE SENSING*, VOL. 38, NO.
4, 2000.
- Galbally I.E., and C. Johansson, A model relating laboratory mea-
surements of rates of nitric oxide production and field mea-
surements of nitric oxide emission from soils., *J. Geophys. res.*
94:6473-6480, 1989.
- Galbally I.E., W.V. Kirstine, C.P. Meyer and Y.P. Wang, 2008.

- 1240 SoilAtmosphere Trace Gas Exchange in Semiarid and Arid
Zones. *Journal of Environmental Quality*, 37(2), 599-607. 1300
- Galy-Lacaux, C., Laouali, D., Descroix, L., Gobron, N., and Li-
1245 ousse, C.: Long term precipitation chemistry and wet deposition
in a remote dry savanna site in Africa (Niger), *Atmos. Chem.*
Phys., 9, 15791595, doi:10.5194/acp-9-1579-2009, 2009.
- Hartley, A. E. and Schlesinger, W. H.: Environmental controls¹³⁰⁵
on nitric oxide emission from northern Chihuahuan desert soils,
Biogeochemistry, 50, 279300, 2000.
- 1250 Hiernaux, P., Le Houérou, H.N., *Les parcours du Sahel. Sècheresse*
17 (12), 51-71, 2006.
- Hiernaux H., E. Mougouin, L. Diarra, N. Soumaguel, F. Lavenu, Y.¹³¹⁰
Tracol, M. Diawara, Sahelian rangeland response to changes in
rainfall over two decades in the Gourma region, Mali, *J. of Hy-*
drol., 375, 114127, 2009.
- 1255 Hudman, R. C., Russell, A. R., Valin, L. C., and Cohen, R. C.: Inter-
annual variability in soil nitric oxide emissions over the United¹³¹⁵
States as viewed from space, *Atmos. Chem. Phys.*, 10, 9943-
9952, doi:10.5194/acp-10-9943-2010, 2010.
- Hudman R.C., N. E. Moore, A. K. Mebust, R. V. Martin, A. R. Rus-
1260 sell, L. C. Valin, and R. C. Cohen, Steps towards a mechanistic
model of global soil nitric oxide emissions: implementation¹³²⁰
and space based-constraints, *Atmos. Chem. Phys.*, 12, 77797795,
2012.
- Jaeglé, L., Martin, R. V., Chance, K., Steinberger, L., Kurosu,
1265 T. P., Jacob, D. J., Modi, A. I., Yoboué, V., Sigha-Nkamdjou,
L., and Galy-Lacaux, C.: Satellite mapping of rain-induced¹³²⁵
nitric oxide emissions from soils, *J. Geophys. Res.*, 109,
doi:10.1029/2003JD004406, 2004.
- Jambert C., D. Serça and R. Delmas, Quantification of N-losses as
1270 NH₃, NO, and N₂O and N₂ from fertilized maize fields in south-
western France, *Nutrient Cycling in Agroecosystems* 48: 91104,¹³³⁰
1997.
- Jarlan, L., Mougouin, E., Frison, P.L., Mazzega, P., Hiernaux, P.,
Analysis of ERS wind scatterometer time series over Sahel
1275 (Mali). *Remote Sens. Environ.* 81 (23), 404415, 2002.
- Jarlan L., P. Mazzega, E. Mougouin, F. Lavenu, G. Marty, P.L. Frison,¹³³⁵
P. Hiernaux, Mapping of Sahelian vegetation parameters from
ERS scatterometer data with an evolution strategies algorithm,
Remote Sensing of Environment 87, 72 84, 2003.
- 1280 Jarlan L., S. Mangiarotti , E. Mougouin, P. Mazzega, P. Hiernaux,
V. Le Dantec, Assimilation of SPOT/VEGETATION NDVI data¹³⁴⁰
into a sahelian vegetation dynamics model, *Remote Sensing of*
Environment 112, 1381-1394, 2008.
- Kesik, M., Ambus, P., Baritz, R., Bruggemann, N., Butterbach-
1285 Bahl, K., Damm, M., Duyzer, J., Horvath, L., Kiese, R., Kit-
zler, B., Leip, A., Li, C., Pihlatie, M., Pilegaard, K., Seufert, G.,¹³⁴⁵
Simpson, D., Skiba, U., Smiatek, G., Vesala, T., Zechmeister-
Boltenstern, S., 2005. Inventories of N₂O and NO emissions
from European forest soils. *Biogeosciences* 2, 1-23, 2005.
- 1290 Kim D.-G., R. Vargas, B. Bond-Lamberty, and M.R. Turetsky, 2012,
Effects of soil rewetting and thawing on soil gas fluxes: a review¹³⁵⁰
of current literature and suggestions for future research, *Biogeo-*
sciences, 9, 2459-2483.
- Krul J.M., F.W.T. Penning de Vries and K. Traore, Les processus
1295 du bilan d'azote. In *La productivite des paturages sahéliens*. Eds
P.W.T. Penning de Vries and M.A. Djiteye. pp 226–246, *Agr.*¹³⁵⁵
Res. Rep. 916. Pudoc, Wageningen, The Netherlands, 1982.
- Laouali D., C. Galy-Lacaux, B. Diop, C. Delon, D. Orange, J.P.
Lacaux, A. Akpo, F. Lavenu, E. Gardrat, P. Castera, Long term
monitoring of the chemical composition of precipitation and wet
deposition fluxes over three Sahelian savannas, 50, 314-327,
2012.
- Laville P., S. Lehuger, B. Loubet, F. Chaumartin, P. Cellier, Effect
of management, climate and soil conditions on N₂O and NO
emissions from an arable crop rotation using high temporal res-
olution measurements, *Agricultural and Forest Meteorology* 151
(2011) 228240, 2011.
- Le Roux X., L. Abbadie, R. Lensi, and D. Serça, Emission of ni-
trogen monoxide from African tropical ecosystems: Control of
emission by soil characteristics in humid and dry savannas of
West Africa, *J. Geophys. Res.*, 100, 23,133-23,142, 1995.
- Lo Seen, D., Mougouin, E., Rambal, S., Gaston, A., Hiernaux, P.,
A regional sahelian grassland model to be coupled with multi-
spectral satellite data. II. Towards the control of its simulations
by remotely sensed indices. *Remote Sens. Environ.* 52, 194206,
1995.
- Li C., J. Aber, F. Stange, K. Butterbach-Bahl, H. Papen, A process-
oriented model of N₂O and NO emissions from forest soils: 1.
Model development, *J. of Geophys. Res.*, 105, 4369-4384, 2000.
- Ludwig J., Meixner F.X., Vogel B., Forstner J, Soil-air exchange of
nitric oxide: An overview of processes, environmental factors,
and modelling studies, *Biogeochemistry*, 52(3), 225-257, 2001.
- Martin, R. E., Scholes, M. C., Mosier, A. R., Ojima, D. S., Hol-
land, E. A. and W.J. Parton, Controls on annual emissions of
nitric oxide from soils of the Colorado shortgrass steppe. *Global*
Biogeochem. Cycles 12, 8191, 1998.
- McCalley C.K. and J.P. Sparks, 2008, Controls over nitric oxide
and ammonia emissions from Mojave Desert soils”, *Oecologia*,
156:871-881.
- Medinets S., U. Skiba, H. Rennenberg, K. Butterbach-Bahl, A re-
view of soil NO transformation: Associated processes and possi-
ble physiological significance on organisms, *Soil Biology and*
Biochemistry 80, 92-117, 2015.
- Meixner F.X., T. Fickinger, L. Marufu, D. Serça, F.J. Nathaus, E.
Makina, L. Mukurumbira, and M.O. Andreae, Preliminary re-
sults on nitric oxide emission from a southern African savanna
ecosystem, *Nutr. Cycling Agroecosyst.*, 48, 123–138, 1997.
- Meixner, F. X. and Yang, W. X.: Biogenic emissions of nitric oxide
and nitrous oxide from arid and semi-arid land, *Dryland Ecohy-*
drology, edited by: DÓdoroco, P. and Porporato, A., by Kluwer
Academic Publishers B.V., Dordrecht, The Netherlands, 233–
255, 2006.
- Moorhead D.L., and J.F. Reynolds, A general model of litter de-
composition in the northern Chihuahuan desert, *Ecological Mod-*
elling, 56, 197-219, 1991.
- Moorhead,D.L. and J.F. Reynolds, Effects of climate change on de-
composition in arctic tussock tundra: a modelling synthesis.
Arct. Alpine Res., 25: 403-412, 1993.
- Moorhead,D.L., R.L. Sinsabaugh, A.E. Linkins, J.F. Reynolds,
Decomposition processes: modelling approaches and applica-
tions, *Science of the Total Environment*, 183, 137-149, 1996.
- Mougouin E., D. Lo Seen, S. Rambal, A. Gaston, and P. Hiernaux, A
Regional Sahelian Grassland Model To Be Coupled with Multi-
spectral Satellite Data. I: Model Description and Validation, *RE-*
MOTE SENS. ENVIRON. 52:181-193, 1995.
- Mougouin, E., Hiernaux, P., Kergoat, L., Grippa, M., De Rosnay, P.,
Timouk, F., Le Dantec, V., Demarez, V., Arjounin, M., Lavenu,

- F., Soumaguel, N., Ceschia, E., Mougénot, B., Baup, F., Frappart, F., Frison, P. L., Gardelle, J., Gruhier, C., Jarlan, L., Mangiarotti, S., Sanou, B., Tracol, Y., Guichard, F., Trichon, V., Diarra, L., Soumaré, A., Koité, M., Dembélé, F., Lloyd, C., Hanan,¹⁴²⁰ N. P., Damesin, C., Delon, C., Serça, D., Galy-Lacaux, C., Seghiéri, J., Becerra, S., Dia, H., Gangneron, F., and Mazzega, P.: The AMMA-CATCH Gourma observatory site in Mali: Relating climatic variations to changes in vegetation, surface hydrology, fluxes and natural resources, *J. Hydrology, AMMA-CATCH*¹⁴²⁵ Special issue, 2009.
- Mougin E., Demarez V., Hiernaux P., Diawara M., Berg A., Estimation of LAI, fCover and fAPAR of Sahel rangelands (Gourma, Mali). *Agricultural and Forest Meteorology*, 198199 155167, 2014. ¹⁴³⁰
- Oswald R., T. Behrendt, M. Ermel, D. Wu, H. Su, Y. Cheng, C. Breuninger, A. Moravek, E. Mougin, C. Delon, B. Loubet, A. Pommerening-Roser, M. Sorgel, U. Poschl, T. Hoffmann, M. O. Andreae, F. X. Meixner, I. Trebs, HONO Emissions from Soil Bacteria as a Major Source of Atmospheric Reactive Nitrogen, *Science* 341, 1233 DOI: 10.1126/science.1242266, 2013. ¹⁴³⁵
- Otter, L. B., Yang, W. X., Scholes, M. C., and Meixner, F. X.: Nitric oxide emissions from a southern african savanna, *J. Geophys. Res.*, 104(D15), 18471–18485, 1999. ¹³⁸⁰
- Pape L., C. Ammann, A. Nyfeler-Brunner, C. Spirig, K. Hens, and¹⁴⁴⁰ F. X. Meixner, An automated dynamic chamber system for surface exchange measurement of non-reactive and reactive trace gases of grassland ecosystems, *Biogeosciences*, 6, 405429, 2009.
- Parton W.J., Predicting soil temperatures in a shortgrass steppe, *Soil Science*, 138, 93-101, 1984. ¹⁴⁴⁵
- Parton W.J., E.A. Holland, S.J. Del Grosso, M.D. Hartman, R.E. Martin, A.R. Mosier, D.S. Ojima, and D.S. Schimel, Generalized model for NO_x and N₂O emissions from soils, *J. of Geophys. Res.*, 106, 17,403-17,419, 2001. ¹³⁹⁰
- Pierre C., Bergametti G., Marticorena B., Mougin E., Bouet C.,¹⁴⁵⁰ Schmechtig C. Impact of vegetation and soil moisture seasonal dynamics on dust emissions over the Sahelian belt in West Africa. *J. Geophys. Res.*, 117, D06115, 2012.
- Pierre, C., G. Bergametti, B. Marticorena, E. Mougin, T. Lebel, and A. Ali, Pluriannual comparisons of satellite-based rainfall products over the Sahelian belt for seasonal vegetation modeling, *J. Geophys. Res.*, 116, D18201, doi:10.1029/2011JD016115, 2011.
- Pihlatie M.K., J.R. Christiansen, H. Aaltonen, J. F.J. Korhonen, A. Nordbo, T. Rasilo, G. Benanti, M. Giebels, M. Helmy, J. Sheehy, S. Jones, R. Juszczak, R. Klefoth, R. Lobo-do-Vale, A. P. Rosa,¹⁴⁶⁰ P. Schreiber, D. Serça, S. Vicca, B. Wolf, J. Pumpanen, Comparison of static chambers to measure CH₄ emissions from soils, *V. 171172, 124136*, 2013.
- Pilegaard K., Processes regulating nitric oxide emissions from soils, *Phil. Trans. R. Soc. B* 2013 368, 20130126, 2013 ¹⁴⁶⁵
- Potter C.S., P.A. Matson, P.M. Vitousek, E.A. Davidson, Process model of controls on nitrogen trace gas emissions from soils worldwide, *J. of Geophys. Res.*, 101, 1361-1377, 1996. ¹⁴¹⁰
- Redelsperger J.-L., Thorncroft, C. D., Diedhiou, A., Lebel, T., Parker, D. J. and Polcher, J.: African Monsoon Multidisciplinary¹⁴⁷⁰ Analysis: An International Research Project and Field Campaign, *Bull. Amer. Meteor. Soc.*, 87, 17391746, 2006.
- Schindlbacher, A., Zechmeister-Boltenstern, S., Butterbach-Bahl, K., Effects of soil moisture and temperature on NO, NO₂ and N₂O emissions from European forest soils. *Journal of Geophys*¹⁴⁷⁵
- ical Research* 109, D17302. doi:10.1029/2004JD004590, 2004.
- Scholes M.C., R. Martin, R.J. Scholes, D. Parsons and E. Winstead, NO and N₂O emissions from savanna soils following the first simulated rains of the season, *Nutrient Cycling in Agroecosystems* 48: 115122, 1997.
- Schreiber F., P. Wunderlin, K. M. Udert and G. F. Wells, Nitric oxide and nitrous oxide turnover in natural and engineered microbial communities: biological pathways, chemical reactions, and novel technologies, doi: 10.3389/fmicb.2012.00372, 2012.
- Schwinning S., O.E. Sala, M.E. Loik, J.R. Ehleringer, Thresholds, memory, and seasonality: understanding pulse dynamics in arid/semi-arid ecosystems, *Oecologia*, 141, 191-193, 2004.
- Serça, D., R. Delmas, C. Jambert and L. Labroue, Emissions of nitrogen oxides from equatorial rain forest in central Africa: Origin and regulation of NO emission from soils, *TellusB*, 46, 143–254, 1994.
- Serça D., R. Delmas, X. Le Roux, D.A.B. Parsons, M.C. Scholes, L. Abbadie, R. Lensi, O. Ronce, and L. Labroue, Comparison of nitrogen monoxide emissions from several African tropical ecosystems and influence of season and fire, *GLOBAL BIOGEOCHEMICAL CYCLES*, VOL. 12, NO. 4, PAGES 637-651, 1998.
- Skopp, J., Jawson, M. D., and Doran, J. W.: Steady state aerobic microbial activity as a function of soil water content, *Soil Sci. Soc. Am. J.*, 54, 16191625, 1990.
- Steinkamp J. and M.G. Lawrence, 2011, Improvement and evaluation of simulated global biogenic soil NO emissions in an AC-GCM, *Atmos. Chem. Phys.*, 11, 6063-6082.
- Sullivan, L.J., Environmental variables controlling nitric oxide emissions from agricultural soils in the southeast united states, *Atmospheric environment*, 30 (21), 3573-3582, 1996.
- Tracol Y., E. Mougin, P. Hiernaux, L. Jarlan, Testing a sahelian grassland functioning model against herbage mass measurements, *Ecological Modelling* 193, 437446, 2006.
- van Dijk, S. M., Gut, A., Kirkman, G. A., Meixner, F. X., Andreae, M. O., and Gomes, B. M.: Biogenic NO emissions from forest and pasture soils: Relating laboratory studies to field measurements, *J. Geophys. Res.*, 107, 8058, doi:10.1029/2001JD000358, 2002.
- Van Dijk S. and F.X. Meixner, Production and consumption of NO in forest and pasture soils from the Amazon Basin: a laboratory study, *Water, Air and Soil Pollution: Focus* 1: 119–130, 2001.
- Vitousek PM, Menge DNL, Reed SC, Cleveland CC. 2013 Biological nitrogen fixation: rates, patterns and ecological controls in terrestrial ecosystems. *Phil Trans R Soc B* 368: 20130119. <http://dx.doi.org/10.1098/rstb.2013.0119>.
- Williams, E. J., Guenther, A. and Fehsenfeld, F. C., An inventory of nitric oxide emissions from soils in the United States. *J. Geophys. Res.* 97, 75117519, 1992.
- Yan, X., Ohara, T., and Akimoto, H.: Statistical modelling of global soil NO_x emissions, *Global Biogeochem. Cy.*, 19, GB3019, doi:10.1029/2004GB002276, 2005.
- Yang, W.X., Meixner, F.X., Laboratory studies on the release of nitric oxide from sub-tropical grassland soils: The effect of soil temperature and moisture, in: *Gaseous Nitrogen Emissions from Grasslands*, Jarvis, S.C., Pain, B.F. (eds.), 1997, pp. 67-70, CAB International, Wallingford, New York.
- Yao Z, X. Wu, B. Wolf, M. Dannenmann, K. Butterbach-Bahl, N. Brüggemann, W. Chen, and X. Zheng, Soil atmo-

sphere exchange potential of NO and N₂O in different land use types of Inner Mongolia as affected by soil temperature, soil moisture, freeze-thaw, and drying- wetting events, JOURNAL OF GEOPHYSICAL RESEARCH, VOL. 115, D17116, doi:10.1029/2009JD013528, 2010.

1480

Yienger, J. J. and Levy II, H.: Empirical model of global soil biogenic NO_x emissions, J. Geophys. Res., 100, 11 44711 464, 1995.

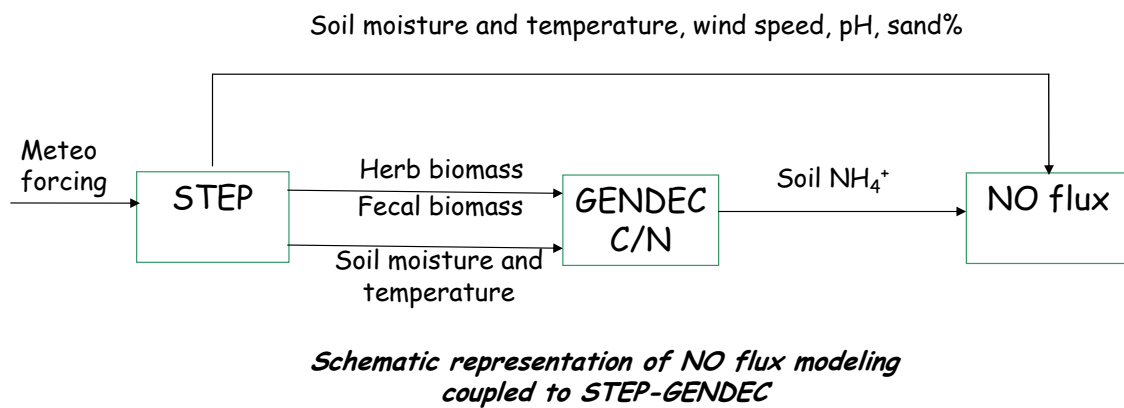


Fig. 1. Schematic view of links between the models STEP, GENDEC and NO emission model.

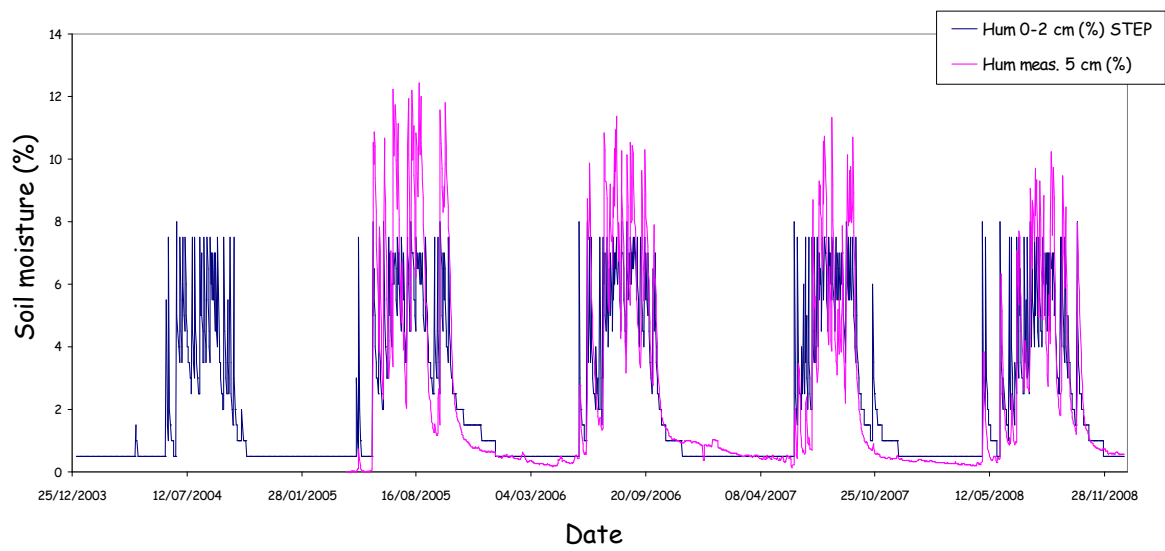


Fig. 2. Soil moisture calculated by STEP at the surface layer (0-2cm) in blue, mean soil moisture measured at 5cm in pink, for years 2004 to 2008 at Agoufou.

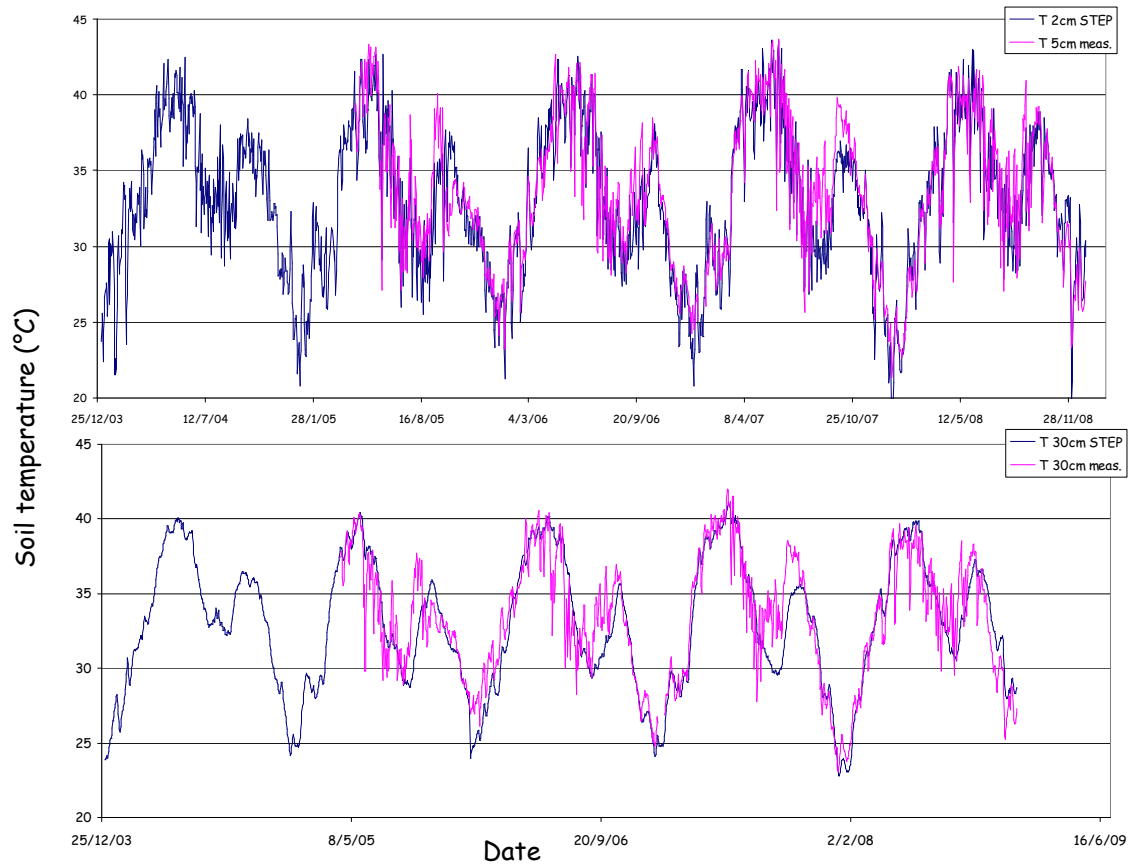


Fig. 3. (a) Soil temperature measured at 5cm at the low slope station (in pink), soil temperature simulated at the surface layer in blue; (b) Soil temperature measured at 30cm at the low slope station (in pink), soil temperature simulated at the second layer (2-30cm) in blue, for years 2004 to 2008 at Agoufou.

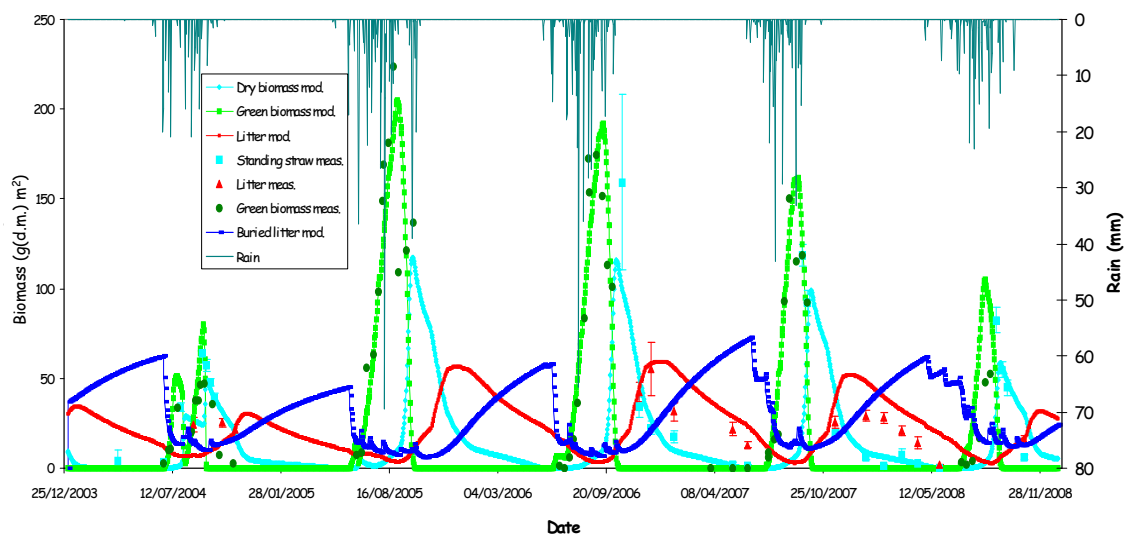


Fig. 4. Green biomass in green, dry biomass in light blue, surface litter in red, buried litter in dark blue (line for the model, dots for measurements), in g(d.m.)m^{-2} . Standard deviations are indicated for the measurements. Rain in blue-grey in mm, for years 2004 to 2008 at Agoufou

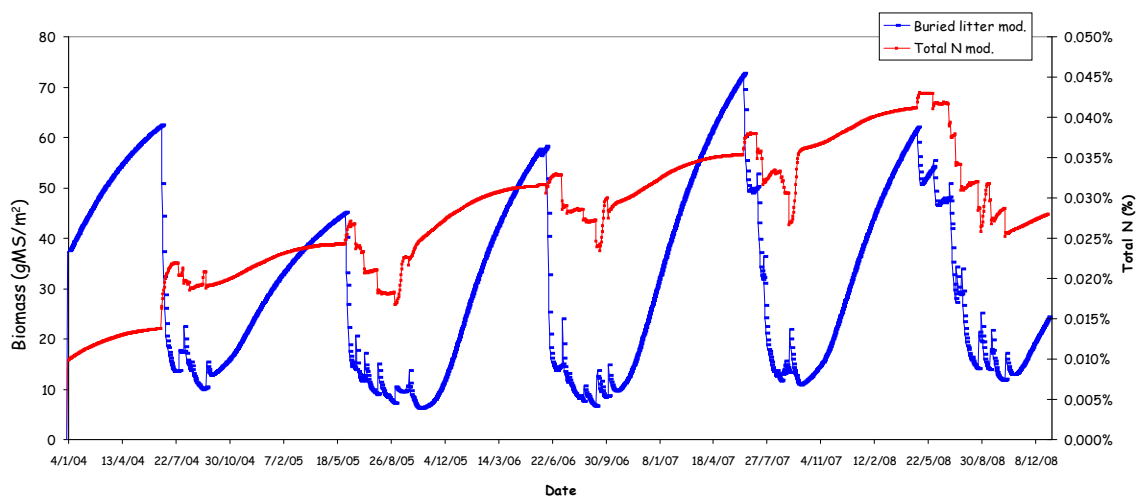


Fig. 5. Simulated buried litter in g(d.m.)m^{-2} in dark blue and total N content in the soil in %, for years 2004 to 2008 at Agoufou.

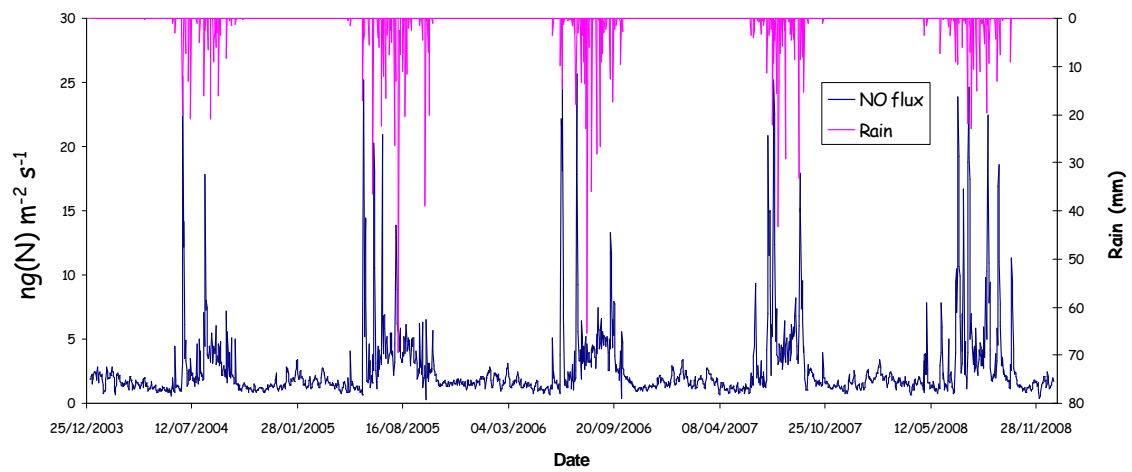


Fig. 6. Simulated NO flux in $\text{kg(N)ha}^{-1}\text{yr}^{-1}$ and rain in mm, for years 2004 to 2008 at Agoufou.

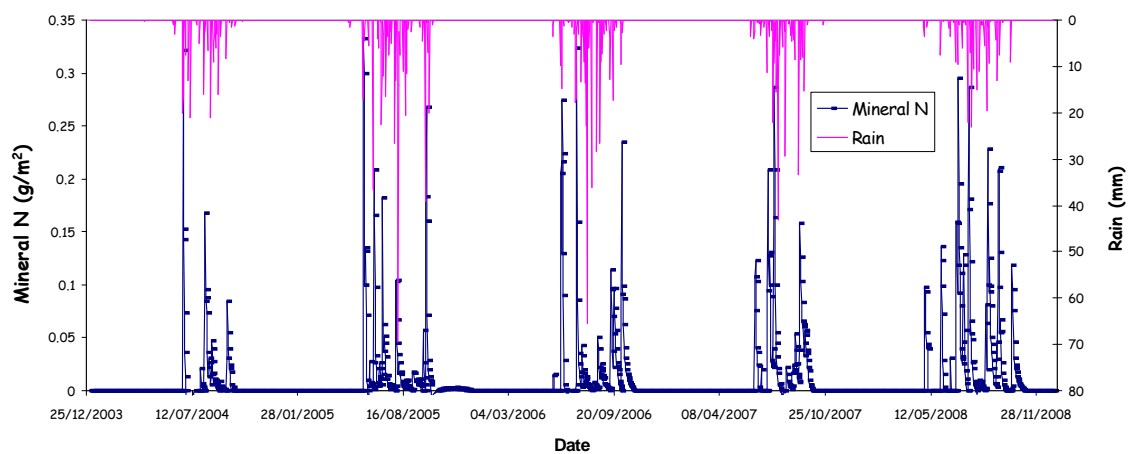


Fig. 7. Simulated mineral N in g m^{-2} and rain in mm for years 2004 to 2008 at Agoufou.

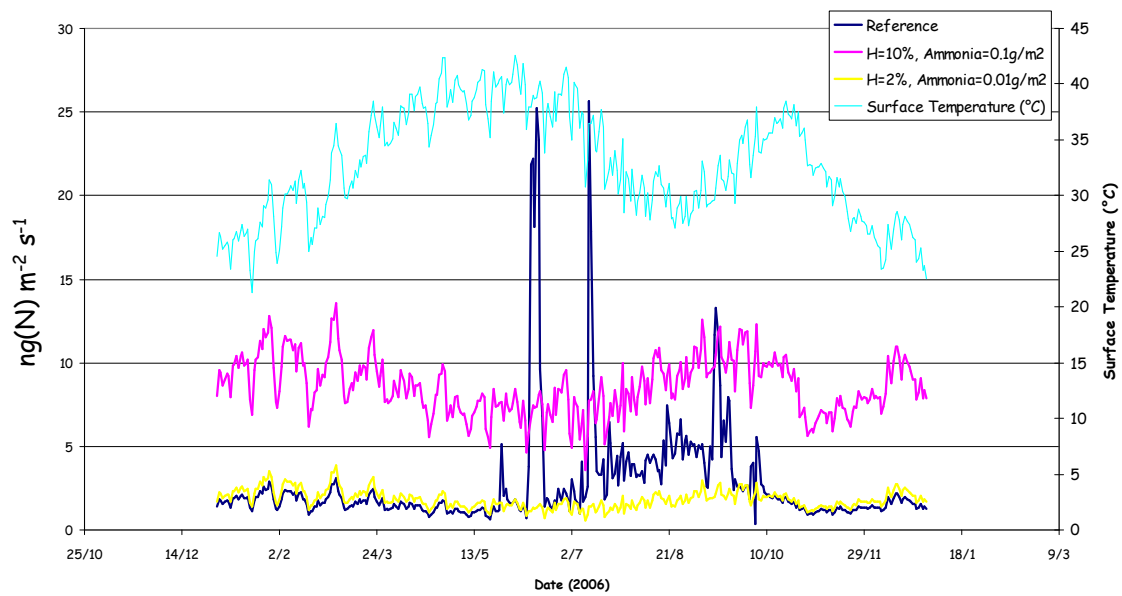


Fig. 8. Sensitivity test. In dark blue: reference NO flux in $\text{kg}(\text{N})\text{ha}^{-1}\text{yr}^{-1}$, in yellow: NO flux with $\text{H}=2\%$ and mineral $\text{N}=0.01\text{g}\text{m}^{-2}$, in pink: NO flux with $\text{H}=10\%$ and mineral $\text{N}=0.1\text{g}\text{m}^{-2}$, in light blue: surface temperature in $^{\circ}\text{C}$, for year 2006.

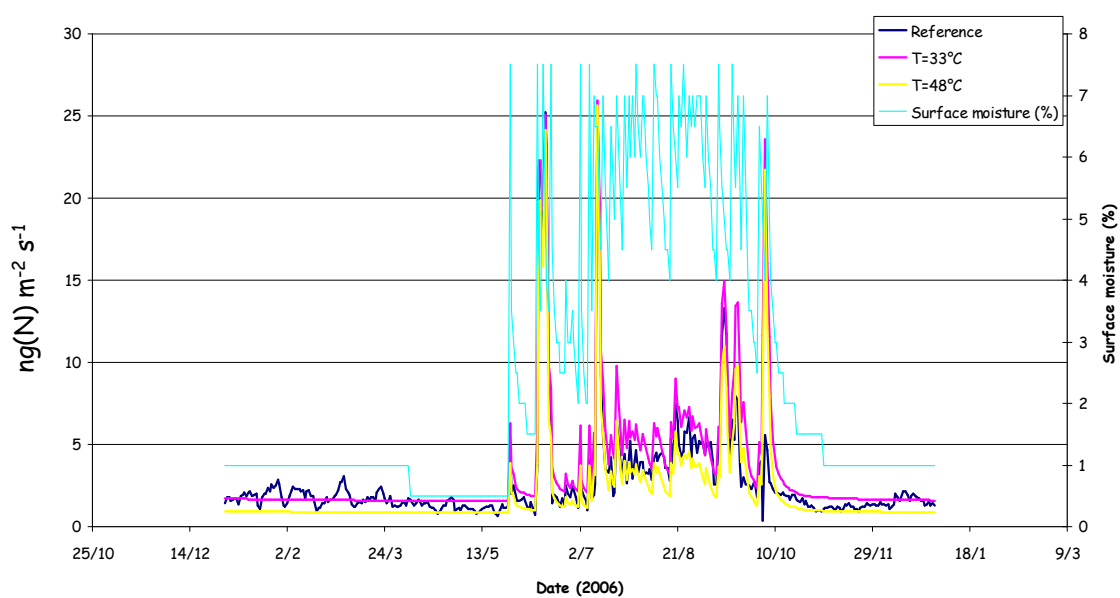


Fig. 9. Sensitivity test. In dark blue: reference NO flux in $\text{kg}(\text{N})\text{ha}^{-1}\text{yr}^{-1}$, in yellow: NO flux with $T=48^\circ\text{C}$, in pink: NO flux with $T=33^\circ\text{C}$, in light blue: surface moisture in %, for year 2006.

Table 1. Inputs for the models used

STEP	Inputs	Unit	Value
Initial parameters	Conversion efficiency	g(d.m.)MJ^{-1}	4
	Initial green biomass	g(d.m.)m^{-2}	0.8
	Initial Specific Leaf Area	cm^2g^{-1}	180
Meteorology	Precipitations	mm	Daily variation
	Global radiation	MJm^{-2}	Daily variation
	Min and max air temperature	$^{\circ}\text{C}$	Daily variation
	Relative humidity	%	Daily variation
	Wind speed	ms^{-1}	Daily variation
Soil	Thicknesses (4 layers)	cm	2;28;70;200
	Initial water stock (4)	mm	0.1;1.5;7.3;38
	Clay content (4)		4.5;5.5;5.2;5.5
	Sand content (4)		91.2;91.3;91;92.3
	pH (4)		6.7;6.7;6.7;6.7
Annual vegetation	Initial dry biomass and litter	g(d.m.)m^{-2}	10;30
	Root fraction (3)		0.75;0.2;0.05
	% dicotyledon	%	29.5
	% C3	%	29.3
	Max tree foliage mass (year before and current year)	kg.ha^{-1}	600;400
Animals	Animal categories (bovine, caprine, ovine, asine, cameline, equine)	%	Monthly variation Ex for january: 0.826;0.091;0.055;0.024;0.001;0
	Animal stock (12 months)	Head number	2893;5288;15626;22537 13874;7832;1191;408 3168;2835;2510;3348
	Grazing area	ha	5000
GENDEC	Inputs	Unit	Value
	Soil temperature	$^{\circ}\text{C}$	From STEP
	Matrix potential	MPa	From STEP
	Microbial assimilation efficiency		0.6
	Carbon pool	gC	From STEP
	Microbial death rate		0.2
	N/C (6: labile compounds, holocellulose, resistant compounds, dead and living microbial biomass, nitrogen pool)		10;1000;34;8;25;9
NOFlux	Inputs	Unit	Value
	surface WFPS	%	From STEP soil moisture
	surface soil temperature	$^{\circ}\text{C}$	From STEP
	Deep soil temperature	$^{\circ}\text{C}$	From STEP
	Wind speed	ms^{-1}	From meteorological forcing
	pH		6.7
	Sand content	%	91.2
	Mineral nitrogen	g(N)m^{-2}	From GENDEC

Table 2. Weights and normalisation factors for the calculation of NO flux

w0	0.561651794427011	w14	1.61126351888328	c1	-2.453992
w1	0.48932473825312	w15	0.134088164903734	c2	0.142680
w2	0.53521035872982	w16	0.21261983875851	c3	-4.609693
w3	0.506600069632212	w17	0.901773966331639	c4	0.115964
w4	0.784867014304196	w18	1.18779902340853	c5	-2.717366
w5	0.283241716518431	w19	1.23132977162784	c6	0.163039
w6	0.132539461337082	w20	2.62451302093078	c7	-0.364632
w7	0.008396615495977	w21	0.27778477919531	c8	5.577532
w8	1.62075908632141	w22	0.413060247967231	c9	-1.535199
w9	0.638173941854311	w23	0.56046255255612	c10	0.054909
w10	3.88469485689393	w24	0.499562769416134	c11	-25.554238
w11	0.942985468044301	w25	1.23876483956298	c12	3.158129
w12	0.862455616914003	w26	1.41295235373665	c13	-1.182905
w13	2.68040193699105	w27	1.20659105237301	c14	0.614317
				c15	3.903007
				c16	9.205080

Table 3. Comparison of experimental and simulated NO fluxes (daily scale) during various wet and dry seasons in dry savanna sites. The model used are indicated in parenthesis. No model specified means experimental data. For yearly means, values are also indicated in $\text{kg(N)ha}^{-1}\text{yr}^{-1}$ in parenthesis

Site name	NO flux ($\text{ng(N)m}^{-2}\text{s}^{-1}$)	Period	Reference
Banizoumbou	6.09±2.63	Wet season 1992	Le Roux et al. (1995)
South Africa	5.4-7.9	Wet season 1993	Otter et al. (1999)
Chihuahuan desert	2.41	Watered soils 1993	Hartley and Schlesinger (2000)
Agoufou	6.69±2.44	Wet season 2004	Delon et al. (2007), This work
Agoufou	2.28±0.79	Wet season 2005	This work
Agoufou (STEP)	3.36±3.17	Wet season 2004	This work
Agoufou (STEP)	4.88±4.28	Wet season 2005	This work
Agoufou (STEP)	4.95±4.82	Wet season 2006	This work
Agoufou (ISBA)	7.99±3.61	Wet season 2006	Delon et al. (2010)
Agoufou (STEP)	4.91±4.53	Wet season 2007	This work
Agoufou (STEP)	5.48±5.23	Wet season 2008	This work
Agoufou (STEP)	1.46±0.51	Dry season 2004	This work
Agoufou (STEP)	1.67±0.59	Dry season 2005	This work
Agoufou (STEP)	1.62±0.64	Dry season 2006	This work
Agoufou (STEP)	1.56±0.51	Dry season 2007	This work
Agoufou (STEP)	1.80±1.13	Dry season 2008	This work
Agoufou (STEP)	2.09±2.06 (0.66±0.65)	Year 2004	This work
Agoufou (STEP)	2.73±2.92 (0.86±0.92)	Year 2005	This work
Agoufou (STEP)	2.73±3.23 (0.86±1.02)	Year 2006	This work
Agoufou (STEP)	2.69±3.08 (0.85±0.97)	Year 2007	This work
Agoufou (STEP)	3.04±3.58 (0.96±1.13)	Year 2008	This work