

**Biogenic NO
emissions from soils
in a Sahelian
rangeland**

C. Delon et al.

Modelling the effect of soil moisture and organic matter degradation on biogenic NO emissions from soils in Sahel rangeland (Mali)

C. Delon¹, E. Mougin², D. Serça¹, M. Grippa², P. Hiernaux², M. Diawara²,
C. Galy-Lacaux¹, and L. Kergoat²

¹Laboratoire d'Aérodologie, Université de Toulouse and CNRS, Toulouse, France

²Geosciences Environnement Toulouse, Université de Toulouse, CNRS and IRD, Toulouse, France

Received: 12 December 2014 – Accepted: 12 December 2014 – Published: 16 January 2015

Correspondence to: C. Delon (claire.delon@aero.obs-mip.fr)

Published by Copernicus Publications on behalf of the European Geosciences Union.

Title Page

Abstract

Introduction

Conclusions

References

Tables

Figures



Back

Close

Full Screen / Esc

Printer-friendly Version

Interactive Discussion



Abstract

This work is an attempt to provide seasonal variation of biogenic NO emission fluxes in a sahelian rangeland in Mali (Agoufou, 15.34° N, 1.48° W) for years 2004–2008. Indeed, NO is one of the most important precursor for tropospheric ozone, and the contribution of the Sahel region in emitting NO is no more considered as negligible. The link between NO production in the soil and NO release to the atmosphere is investigated in this study, by taking into account vegetation litter production and degradation, microbial processes in the soil, emission fluxes, and environmental variables influencing these processes, using a coupled vegetation-litter decomposition-emission model. This model includes the Sahelian-Transpiration-Evaporation-Productivity (STEP) model for the simulation of herbaceous, tree leaf and fecal masses, the GENDEC model (GENERAL DEComposition) for the simulation of the buried litter decomposition and microbial dynamics, and the NO emission model (NOFlux) for the simulation of the NO release to the atmosphere. Physical parameters (soil moisture and temperature, wind speed, sand percentage) which affect substrate diffusion and oxygen supply in the soil and influence the microbial activity, and biogeochemical parameters (pH and fertilization rate related to N content) are necessary to simulate the NO flux. The reliability of the simulated parameters is checked, in order to assess the robustness of the simulated NO flux. Simulated yearly average of NO flux ranges from 0.66 to 0.96 kg(N) ha⁻¹ yr⁻¹, and wet season average ranges from 1.06 to 1.73 kg(N) ha⁻¹ yr⁻¹. These results are in the same order as previous measurements made in several sites where the vegetation and the soil are comparable to the ones in Agoufou. This coupled vegetation-litter decomposition-emission model could be generalized at the scale of the Sahel region, and provide information where little data is available.

Biogenic NO emissions from soils in a Sahelian rangeland

C. Delon et al.

Title Page

Abstract

Introduction

Conclusions

References

Tables

Figures



Back

Close

Full Screen / Esc

Printer-friendly Version

Interactive Discussion



1 Introduction

In the continental biosphere, most of the N cycle is accomplished through internal processes such as mineralization/assimilation, because N is mostly assimilated in the biosphere from its mineral form (nitrates NO_3^- , ammonium NH_4^+). In natural soils, these compounds come from the mineralization of organic matter through the bacterial and fungal decomposition of dead matter. N cycle in the soil is dominated by microbial transformations. Bacterial processes involve important reactive gaseous components, e.g. NO formation through nitrification and denitrification (Delmas et al., 1995). A significant fraction of these compounds can be released to the atmosphere. NO is one of the most important precursor for tropospheric ozone, and participates to the formation of nitric oxide, participating in N deposition. NO_x ($\text{NO}_x = \text{NO} + \text{NO}_2$) are also involved in the abundance of the hydroxyl radical (OH) which determines the lifetime of some pollutants and greenhouse gases (Fowler et al., 2009).

Atmospheric NO_x is coupled to the earth's nitrogen cycle through complex interactions involving soil microbial activity, soil N content and N inputs to the soil, either from anthropogenic or atmospheric origin (Hudman et al., 2012; Parton et al., 2001). The processes of NO production and consumption in the soil have been studied through modelling, laboratory or field studies by several authors (Butterbach-Bahl et al., 2004a; Schindblacher et al., 2004; Li et al., 2000) for different types of soils and climates (Butterbach-Bahl et al., 2009, and Kesik et al., 2005 for european soils, Feig et al., 2008 and Meixner et al., 1997 for tropical soils as examples). A difference has to be defined between NO production in the soil and NO emission (release) to the atmosphere. NO emission to the atmosphere might deviate significantly from the production of NO in soil. Several biotic and abiotic processes in soils and plants are responsible for the production and consumption of NO (Galbally and Johansson, 1989; Conrad, 1996). Microbial nitrification and denitrification constitute the principal processes (Ludwig et al., 2001). According to McCalley and Sparks (2008) and references therein, fluxes are regulated by factors that include the concentration of

BGD

12, 1155–1203, 2015

Biogenic NO emissions from soils in a Sahelian rangeland

C. Delon et al.

Title Page

Abstract

Introduction

Conclusions

References

Tables

Figures

◀

▶

◀

▶

Back

Close

Full Screen / Esc

Printer-friendly Version

Interactive Discussion



Biogenic NO emissions from soils in a Sahelian rangeland

C. Delon et al.

Title Page

Abstract

Introduction

Conclusions

References

Tables

Figures



Back

Close

Full Screen / Esc

Printer-friendly Version

Interactive Discussion



inorganic N (NO_3^- and NH_4^+), soil moisture, temperature, accessibility of labile C, and physical soil properties. Most of the trace gas production and consumption processes in soil are probably due to microorganisms. Oxidation of NO to nitrate has been found to be the dominant NO consumption mechanism in some soils (Conrad, 1996 and references therein). Release rates of NO can be much lower than the NO production rates, since NO consumption is of similar magnitude to NO production. NO shows both high and variable production and consumption rates in soil and consequently highly dynamic compensation points (Conrad, 1996). The concept of the compensation concentration is based on the observation that production and consumption of a trace gas occur simultaneously in a soil and that the consumption rate is a function of the trace gas concentration, whereas the production rate is not (Conrad, 1994). According to Ludwig et al. (2001), the net exchange of NO between ecosystems and the atmosphere is globally dominated by biogenic emissions of NO from soils. Only at exceptionally high ambient NO concentration, direct deposition to plants might constitute a significant removal mechanism for atmospheric NO (Ludwig et al., 2001).

NO release in arid and semi arid soils are mainly governed by pulse events, produced when first precipitations shower long-dried soils at the beginning of the rainy season. Several studies have shown that pulse emissions of NO contribute strongly to the total emission (Yan et al., 2005; Hudman et al., 2010; Jaeglé et al., 2004; Kim et al., 2012), specifically in semi arid regions. In those regions, mineral and organic substrates tend to accumulate at the soil surface and in the soil during the long dry season, when there is little nutrient demand, leading to an excess of mineralization during the early phases of the wet cycle (Schwinning et al., 2004).

At the global scale, NO emissions from soils have been estimated to be approximately 21 Tg(N) yr^{-1} (Davidson and Kinglerlee, 1997) at the ground level (below canopy), a portion of the NO_2 being deposited within the canopy. Above canopy emissions were estimated to be $5.45 \text{ Tg(N) yr}^{-1}$ by one of the first global modelling study on the subject (Yienger and Levy, 1995), and more recently up to $8.6 \text{ Tg(N) yr}^{-1}$ (Steinkamp and Lawrence, 2011) and $10.7 \text{ Tg(N) yr}^{-1}$ (Hudman et al., 2012). Above

**Biogenic NO
emissions from soils
in a Sahelian
rangeland**

C. Delon et al.

[Title Page](#)[Abstract](#)[Introduction](#)[Conclusions](#)[References](#)[Tables](#)[Figures](#)[◀](#)[▶](#)[◀](#)[▶](#)[Back](#)[Close](#)[Full Screen / Esc](#)[Printer-friendly Version](#)[Interactive Discussion](#)

canopy emissions are calculated by introducing the canopy reduction factor (CRF) concept, based on the leaf area index (LAI), and considering the canopy as an absorber of NO₂ (Yienger and Levy, 1995). At the scale of the Sahelian region, Delon et al. (2010) have calculated a $0.5 \pm 0.1 \text{ Tg(N) yr}^{-1}$ above canopy NO_x emission, representing 5 to 10% of the global budget according to Hudman et al. (2012) or Yienger and Levy (1995). Hudman et al. (2012) have shown that the largest pulsed enhancements in their model are predicted over this region during the monsoon onset (April to June), comprising 15 to 65% of the simulated NO₂ column and increasing variability by a factor of 5. As a consequence, the contribution of the Sahel in emitting NO is no more considered as negligible. Though they are of high interest for the specific mechanisms taking place there, and for their relatively high contribution to the global N cycle, semi arid regions remain poorly investigated due to the remoteness of the sites and the complexity to run long term measurements in difficult conditions. Modelling is therefore a precious help to describe and understand production and consumption processes in the soil leading to the release of NO, without minimizing the need of measurements on the field.

In this study, we propose a modelling approach of NO emissions from soils at the yearly and seasonal scale. Production and consumption processes, as well as NO release, will be identified through organic matter decomposition and microbial dynamics in the soil, in semi arid ecosystems. The main goal is to use a coupled vegetation-litter decomposition-emission modelling approach, which links three existing models specifically developed for semi arid regions, simulating respectively the growth and degradation of the vegetation (STEP), the decomposition of the organic matter and microbial processes in the soil (GENDEC), and the release of NO (NOFlux) associated to environmental variables. Modelling results are compared to data collected in the northern Mali site of Agoufou for years 2004 to 2008. This modelling tool has been developed for semi arid regions where specific processes such as pulses need to be taken into account. Indeed, pulses are usually underestimated by global scale modelling, and the specificity of a model developed for semi arid regions helps to

**Biogenic NO
emissions from soils
in a Sahelian
rangeland**

C. Delon et al.

[Title Page](#)[Abstract](#)[Introduction](#)[Conclusions](#)[References](#)[Tables](#)[Figures](#)[⏪](#)[⏩](#)[◀](#)[▶](#)[Back](#)[Close](#)[Full Screen / Esc](#)[Printer-friendly Version](#)[Interactive Discussion](#)

provide magnitudes of NO fluxes. In our study, these emissions are related to their biogeochemical origin, to the quantity of biomass, to the quantity of livestock which drives the quantity of organic matter and the N pool and N turnover in the soil. Furthermore, the Sahel region is a large region grazed by domestic cattle, and the role of animals in biomass management, as it is included in our modelling approach, is seldom highlighted in regional or global models. This study presents a more detailed emission model than those based on the Yienger and Levy (1995) approach only, and gives an insight in N production processes in the soil at the origin of the emission.

Firstly, the Agoufou site is presented, as well as the different measurements used for model comparison. Secondly, the three models, STEP, GENDEC and NOFlux, are introduced. Finally, modelling results are discussed and compared to field measurements, and limitations and uncertainties are assessed.

2 Data source: Agoufou site

The Agoufou study site (Mali, 15.34° N, 1.48° W) is part of the African Monsoon Multi-disciplinary Analysis (AMMA) – Couplage de l'Atmosphère Tropicale et du Cycle Hydrologique (CATCH) site observatory located in the Gourma region. This region stretches, in northern Mali, from the loop of the Niger River southward down to the border region with Burkina-Faso (Mougin et al., 2009). Located towards the northern limit of the area reached by the West African Monsoon, the region experiences a single rainy season with most precipitation falling between late June and mid September. The rainy season is followed by a long dry season of approximately 8 months. At the Agoufou site, the soil is sandy, with 91.2 % of sand, 3.1 % of silt and 4.6 % of clay in the first 5 cm. The surface pH is 6.7. The hydrologic system is endorheic operating at short distance from dune slopes to inter-dune depressions within small adjacent catchments. The vegetation at Agoufou is an open woody savanna, typical of mid-Sahel sandy soil vegetation with an herbaceous layer almost exclusively composed of annual species, and scattered trees and shrubs with a 3.1 % crown cover (Hiernaux et

al., 2009). The area is used as livestock grazing under communal access. Because of the proximity of the Agoufou permanent pond, the grazing pressure is high during the dry season. Agoufou can be considered as representative of sahelian dry savannas. A comprehensive description of the site can be found in Mougin et al. (2009).

2.1 Meteorological and vegetation data

At the Agoufou site, woody and herbaceous plant density and species composition are organised in facieses following finer topography and soils nuances or differences in land use practices and histories (Hiernaux and Le Houérou, 2006). The herbaceous layer has been monitored using a two-level stratified random sampling design, as described in Hiernaux et al. (2009). Total and green vegetation cover (visual and digital photograph estimates in %, Mougin et al., 2014), standing and litter mass (destructive measure, with harvest, air drying and weighing) and species composition (list with visual estimates of contribution to bulk) are assessed in 1 m × 1 m plots randomly sampled in each of the vegetated strata along the transect. Above ground green and dry masses and surface litter mass have been sampled during several years, but only the years 2004–2008 are used in this study to evaluate the performance of the model. Indeed, these years represent contrasted meteorological conditions, with low rainfall years (2004 and 2008) and years with normal rainfall for the region (2005–2007). Furthermore, vegetation data are more numerous during these years, when the AMMA experiment took place in West Africa.

A meteorological station has been installed from 2002 to 2010, giving data on rainfall, wind speed, relative humidity, air temperature and global radiation. These data were quality checked and gap filled for the years 2004 to 2008 only. Data on soil moisture at different levels and different places (top, middle and bottom locations of dune slope), and soil temperatures at different levels are also available, except for year 2004. A detailed description of the soil moisture network and methodology and of the meteorological station is given in De Rosnay et al. (2009) and Mougin et al. (2009). Meteorological data and a part of vegetation data are available in the AMMA data

Biogenic NO emissions from soils in a Sahelian rangeland

C. Delon et al.

Title Page

Abstract

Introduction

Conclusions

References

Tables

Figures



Back

Close

Full Screen / Esc

Printer-friendly Version

Interactive Discussion



base: <http://bd.amma-catch.org/amma-catch2/main.jsf>. Other data are progressively integrated in this data base.

2.2 Calculation of NO flux

NO flux were determined at Agoufou during summers 2004 and 2005, from closed dynamic chambers (flowed-through-non-steady-state) measurements. Stainless steel chambers of 800 cm² area (40 × 20) and 18 cm height were used. A stainless steel frame is inserted into the ground before the measurement which starts when adjusting the chamber on the frame, sealing being assured by a slot filled with water. The air inlet is on one side of the chamber, the air outlet on the other side is connected to the analyser with two meters of Teflon tubing, so that the chamber is swept with an air flow only due to the pump of the instrument. The residence time of the air inside the chamber is approximately 10 min. No significant change in air temperature in the chamber has to be noticed during this lapse time. Pressure is assumed to be constant throughout the flux measurement and equal to ambient pressure. Stainless steel is known to be quasi inert to NO, as well as Teflon for tubing, ensuring that NO does not react with the walls of the chamber (Laville et al., 2011). This method has been widely used in the field, as reported for example in Davidson (1991), Serça et al. (1994, 1998), Jambert et al. (1997), Scholes et al. (1997), Laville et al. (2011).

Several different places at the site of Agoufou have been sampled. In June–July 2004, 180 fluxes were sampled. The chambers were placed on the soil, 90 with short vegetation inside, 90 over bare soil. In August 2005, 70 fluxes were sampled, mostly over vegetation, the whole site being covered by vegetation in the core of the wet season. Fluxes were sampled every day between 30 June and 12 July 2004 and between 11 and 13 August 2005, in the morning and in the afternoon, and daily means were calculated and plotted in Fig. 6b. SDs are indicated on the plot, showing the spatial heterogeneity of fluxes at the same site.

Biogenic NO emissions from soils in a Sahelian rangeland

C. Delon et al.

Title Page

Abstract

Introduction

Conclusions

References

Tables

Figures



Back

Close

Full Screen / Esc

Printer-friendly Version

Interactive Discussion



The net flux is calculated from the slope of the increase of concentration within the chamber.

$$F = \left(\frac{dC[\text{NO}]}{dt} \right) \left(\frac{VMN}{SRT} \right) \quad (1)$$

$\frac{dC[\text{NO}]}{dt}$ is the initial rate of increase in NO concentration calculated by linear regression (ppb s⁻¹), MN is the nitrogen molecular weight (g mol⁻¹), $S = 800 \text{ cm}^2$ is the surface of the chamber, $V = 18 \text{ L}$ is the volume of the chamber, $R = 0.082 \text{ cm}^3 \text{ atm mole}^{-1} \text{ K}^{-1}$ is the gas constant, $T(\text{K})$ is the air temperature in the chamber, F is the resulting flux in ng(N) m⁻² s⁻¹ (Serça et al., 1994).

NO concentration in the chamber was measured using a ThermoEnvironment 42 CTL analyser. This analyser detects NO by chemiluminescence with O₃. Detection limit and sensitivity is around 0.05 ppbv. Flow rate in the analyser and the chamber is about 0.8 L min⁻¹. Multipoint calibration was checked before and after each field experiment with a dynamical calibration system.

The NO flux rate was computed from the slope of the initial linear increase in NO concentration in the chamber, following Davidson (1991) and Serça et al. (1994).

The magnitude of zone concentrations is around 20 ppb in July, NO₂ concentrations around 2.5 ppb (Adon et al., 2010), and NO₂ deposition velocity was estimated to be 0.13 cm s⁻¹ (Adon et al., 2013; Delon et al., 2010) at the Agoufou site. NO ambient concentrations during the 2004 field campaign were 0.60 ± 0.57 ppb (information not available for the 2005 field campaign). The NO flux is underestimated if neither deposition nor conversion to NO₂ through reaction with O₃ is taken into account, but the underestimation should be limited considering the low ozone concentrations and low NO₂ deposition velocities. Laville et al. (2011) show that artefacts can be introduced when NO concentrations are high (up to 60 ppb). In our case, NO concentrations are much lower than the values indicated by these authors. Other studies such as Schindblacher et al. (2004) did not consider reactions with ozone either because ozone concentrations were low.

Biogenic NO
emissions from soils
in a Sahelian
rangeland

C. Delon et al.

Title Page

Abstract

Introduction

Conclusions

References

Tables

Figures

◀

▶

◀

▶

Back

Close

Full Screen / Esc

Printer-friendly Version

Interactive Discussion



Biogenic NO emissions from soils in a Sahelian rangeland

C. Delon et al.

[Title Page](#)[Abstract](#)[Introduction](#)[Conclusions](#)[References](#)[Tables](#)[Figures](#)[◀](#)[▶](#)[◀](#)[▶](#)[Back](#)[Close](#)[Full Screen / Esc](#)[Printer-friendly Version](#)[Interactive Discussion](#)

Unfortunately, it is not possible to precisely recalculate the underestimation of NO flux in our study since NO₂ concentrations measured by the 42C are not available anymore. However, following Laville et al. (2011) and Pape et al. (2009), we have calculated the underestimation with the mean climatological ozone concentration found in Adon et al. (2010), which is 20 ppb in July, with $k = 5.32 \times 10^{-4} \text{ ppb}^{-1} \text{ s}^{-1}$ (reaction rate constant at 1013 hPa and 313 K, estimated pressure and temperature in the chamber), and with the mean NO concentration 0.6 ppb obtained with the field measurements in 2004. The mean underestimation ($k \cdot [\text{NO}] \cdot [\text{O}_3] = 5.32 \times 10^{-4} \cdot 20 \cdot 0.6 = 0.0064 \text{ ppbs}^{-1}$) is 7.6 % of the mean slope (0.0847 ppbs^{-1} , obtained from Eq. 1). The mean under estimation is therefore estimated at 7.6 %.

During summer 2004 (from 30 June to 12 July), NO daily fluxes ranged from 0.78 to 3.58 kg(N)ha⁻¹yr⁻¹ (mean = $2.11 \pm 0.77 \text{ kg(N)ha}^{-1} \text{ yr}^{-1}$, Delon et al., 2007). During summer 2005 (from 11 to 13 August), NO fluxes ranged from 0.57 to 1.01 kg(N)ha⁻¹yr⁻¹ (mean = $0.72 \pm 0.25 \text{ kg(N)ha}^{-1} \text{ yr}^{-1}$, unpublished data). In the following simulations, NO fluxes were not measured at Agoufou during years 2006 to 2008. However, since NO flux data are scarce, these field measurements from 2004 and 2005 will be helpful to give an order of magnitude of NO emission at the beginning and during the wet season.

3 Model description

3.1 Modelling approach

Biogeochemically based model of instantaneous trace gas production can be parameterized for individual sites, describing locally nitrification and denitrification processes responsible for emission, but more generalized models are needed for the calculation of temporally or regionally integrated models (Potter et al., 1996). In that purpose, a new approach for the calculation of biogenic NO emissions from soils has been developed by Delon et al. (2007), in order to use general environmental

Biogenic NO emissions from soils in a Sahelian rangeland

C. Delon et al.

Title Page

Abstract

Introduction

Conclusions

References

Tables

Figures



Back

Close

Full Screen / Esc

Printer-friendly Version

Interactive Discussion



parameters easily available as inputs. This approach was used at the regional scale to simulate pulse events in the Sahel (Delon et al., 2008) and at the yearly scale at several Sahelian sites (Delon et al., 2010; Laouali et al., 2012). This approach has been partly inspired by the hole-in-the-pipe (HIP) concept, developed by Firestone and Davidson (1989), presenting the environmental parameters which control the variation of trace-N-gases by nitrification and denitrification with different levels of regulation, from proximal (e.g. mineralization, immobilization, respiration, plant uptake) to distal (e.g. pH, soil porosity, soil type). Using two functions based on soil N availability and soil water content, the HIP model characterizes a large fraction of the observed variation of NO emissions from soils (Davidson et al., 2000).

The NO emission model will be described in the following sections. In its previous version, (Delon et al., 2010), the N availability in the soil was driven by the N input at the surface (organic and livestock fertilisation) and considered constant in time (a similar amount of N was injected each month). In the new version, the N in the soil is calculated from buried litter (vegetation and feces) decomposition and varies in time, thanks to the coupling with the other models which provide vegetation and organic matter in a dynamic way. The N input used to calculate the NO flux is therefore more realistic than in the previous version where it was prescribed without any link with vegetation growth and decay. The link between vegetation, litter decomposition, microbial dynamics in the soil and NO emission is explained in the following sections.

The on line coupled models are presented here and used at the daily scale: the herbaceous and tree leaf masses are simulated using the Sahelian-Transpiration-Evaporation-Productivity (STEP) model (Mougin et al., 1995), the buried litter decomposition and microbial dynamics is simulated in GENDEC (Moorhead and Reynolds, 1991), and the NO release to the atmosphere is simulated with the NOFlux model (Delon et al., 2007).

A schematic view of the model imbrications is given in Fig. 1. Inputs for each model are detailed in Table 1.

3.2 STEP

STEP is an ecosystem process model for sahelian herbaceous vegetation. In its current version, tree phenology (leaf mass set-up and fall) is also described by considering six phenological types which proportions must be known. This model is defined to be used at local or regional scale in order to simulate the temporal variation of the main parameters and processes associated with vegetation functioning in sahelian savannas. In this study, the model will be used at the local scale. In previous studies, STEP has been coupled to radiative transfer models in the optical (Lo Seen et al., 1995) and active/passive microwave domain (Frison et al., 1998), allowing an indirect comparison of satellite observations and modeling results of the vegetation growth (e.g. Jarlan et al., 2002). The performance of the STEP process model in predicting herbage mass variation over time and herbage yield along a north-south bio-climatic gradient within the Sahel was tested along a 15 years period, and gave high correlation coefficients between model and measurements when the model is calibrated for each site (Tracol et al., 2006). Modifications brought to the first version of the model have been given in Jarlan et al. (2008). A recent regional scale use of the model is illustrated in Pierre et al. (2012).

STEP is driven by daily standard meteorological data obtained from site measurements in Agoufou (precipitations, global radiation, air temperature, relative humidity and wind speed), prepared for years 2004 to 2008. Site specific parameters like sand and clay percentage, pH, C3/C4 percentage, initial green biomass, initial dry biomass and initial litter, number of soil layers, initial water content in each layer, livestock composition (between 6 different categories, cattle, sheep, goats, donkeys, horses, camels) and livestock total load are given as input parameters (see Table 1). The seasonal dynamics of the herbaceous layer, major component of the Sahelian vegetation, is represented. The processes simulated are: water fluxes in the soil, evaporation from bare soil, transpiration of the vegetation, photosynthesis, respiration, senescence, litter production, and litter decomposition at the soil surface.

BGD

12, 1155–1203, 2015

Biogenic NO emissions from soils in a Sahelian rangeland

C. Delon et al.

Title Page

Abstract

Introduction

Conclusions

References

Tables

Figures



Back

Close

Full Screen / Esc

Printer-friendly Version

Interactive Discussion



Moreover, structural parameters such as vegetation cover fraction f_{Cover} , LAI (leaf area index), and canopy height, are also simulated. A new development has been included in the model for the present study: soil temperatures are simulated from air temperature according to Parton (1984), and discussed below. Parton et al. (1984), report a simplified soil temperature model in a short grass steppe. This model requires daily max and min air temperature, global radiation (provided by forcing data), plant biomass (provided by the model), initial soil temperature, and soil thermal diffusivity. Thermal diffusivity ($\text{cm}^2 \text{s}^{-1}$) is the ratio between thermal conductivity ($\text{Wm}^{-2} \text{K}^{-1}$) and volumetric heat capacity ($1500\,000 \text{Jm}^{-3} \text{K}^{-1}$). Thermal conductivity for each layer i of the soil is

$$\text{Cond}(i) = -9.77 + 12.19 \cdot (\text{soil humidity}(i))^{0.0528}$$

Total above-ground herbaceous mass is divided into three components: aboveground green mass, standing dead (or dry) biomass, and litter biomass. Green biomass variations are controlled by the balance between total photosynthetic inputs expressed by the gross photosynthesis and total outputs due to respiration losses and senescence. Dry biomass results from the senescence of green material, minus litter production, ingestion by animals and burned biomass. Litter biomass accumulation is the result of dead material falling down on the soil, due to trampling and to climate conditions like rain, wind, and air temperature, minus litter burying and ingestion by animals, litter burning and litter decomposition due to insects, small mammals and climate conditions (rain kinetic energy, soil humidity, air temperature and wind). Green vegetation growth starts at seedling emergence with an initial above ground biomass. The date of emergence is estimated from the number of days required for germination when the moisture content of the soil surface layer is above wilting point. The quantity of fecal matter is calculated from the livestock total load given as input parameter.

The quantity of carbon in the soil is calculated from the total litter input (from fecal and herbal mass), which is 50 % of the buried litter mass. The quantity of nitrogen in the soil is derived from the quantity of carbon using the C:N ratio. A more detailed

BGD

12, 1155–1203, 2015

**Biogenic NO
emissions from soils
in a Sahelian
rangeland**

C. Delon et al.

Title Page

Abstract

Introduction

Conclusions

References

Tables

Figures

⏪

⏩

◀

▶

Back

Close

Full Screen / Esc

Printer-friendly Version

Interactive Discussion



description of STEP can be found in Mougin et al. (1995), Tracol et al. (2006) and Jarlan et al. (2008). Information such as the quantity of fecal and herbal masses are transferred as inputs to GENDEC, the litter decomposition model.

3.3 GENDEC

5 GENDEC (for GENeral DEComposition) is a general, synthetic model, which aim is to examine the interactions between litter, decomposer microorganisms, microbial dynamics and C and N pools, and to explore the mechanisms of decomposition in arid ecosystems. The decomposition of buried litter by micro organisms is the first step of the GENDEC model, giving access to the mineral C and N pools of the ecosystem. GENDEC has been specifically developed to reproduce these processes
10 in semi arid ecosystems, where inputs of organic matter and soil moisture are low. The ultimate step, C and N mineralization, is fed by (1) decomposition of organic matter, and (2) growth, respiration and death of microbes (microbial dynamics). The general modelling approach is based on fundamental decomposition processes. Six pools of C and N are used in this model, representing dead organic matter (labile materials with high N content and rapid decomposition rate, cellulose and related materials with an intermediate decomposition rate and very little associated N, very slowly decomposing recalcitrant compounds with moderate levels of physically associated N, and dead microbiota with high N content and rapid decomposition), living
20 microbial biomass (final pool of organic matter), and soil N for the nitrogen submodel (Moorhead and Reynolds, 1991). C : N ratio is different for each of these compartments, and is set to 10, 1000, 34, 8, 25 and 9 respectively for labile compounds, holocellulose, resistant compounds, dead microbial biomass, living microbial biomass and nitrogen pools, based on Moorhead and Reynolds (1991) and experimental
25 results from the Agoufou site detailed below. Flows between these pools are driven by empirical relationships according to characteristics of the microbial community. Climatic parameters such as soil moisture and soil temperature are important drivers for C and N dynamics. The model describes the processes underlying the interactions

**Biogenic NO
emissions from soils
in a Sahelian
rangeland**

C. Delon et al.

[Title Page](#)

[Abstract](#)

[Introduction](#)

[Conclusions](#)

[References](#)

[Tables](#)

[Figures](#)



[Back](#)

[Close](#)

[Full Screen / Esc](#)

[Printer-friendly Version](#)

[Interactive Discussion](#)



Biogenic NO emissions from soils in a Sahelian rangeland

C. Delon et al.

Title Page

Abstract

Introduction

Conclusions

References

Tables

Figures

◀

▶

◀

▶

Back

Close

Full Screen / Esc

Printer-friendly Version

Interactive Discussion



between C substrate, principal decomposers and nutrients that ultimately result in mineralization. Decomposition and microbial metabolic rates increase with increasing moisture availability, (at least until saturation leads to anaerobic conditions) and with increasing temperature (at least at temperature below 30–40 °C). The dynamics of the soil N pool gives the net mineralization. The model emphasizes the association between C and N dynamics and microbial processes. Wetting drying events increase the turnover of microbial processes, stimulate C mineralization, and involve a short term carbon dynamics since soil organic matter and nitrogen content are low. Microbial growth and respiration are function of total carbon available, i.e. total C losses from the litter. Mineral N used to calculate NO release to the atmosphere is directly linked to mineral C used to calculate the respiration of microbes (i.e. CO₂ release).

GENDEC is driven by organic matter input coming from four different boxes in STEP: buried litter (herbs and tree leaves), trees, fecal matter, and dry herb roots. It is also driven by soil temperature and soil water potential calculated in STEP. Input parameters include the assimilation efficiency and the microbial mortality rate (see Table 1). At last, mineral nitrogen, total quantities of C and N, respiration are obtained for each box (buried herbaceous litter, buried leaf trees, dry roots and fecal matter). The addition of these four contributions gives access to the total C and N in the soil. Organic carbon is assumed to be the sole source of energy and substrate for heterotrophic microbial growth. Organic matter mineralization driven by heterotrophic activity of soil microorganisms releases mineral nitrogen. This is the starting point for the calculation of nitrogen transformations in soils (Blagodatsky et al., 2011). The mineral nitrogen is then used as an input in the NOFlux model described below.

3.4 NOFlux

The NO biogenic emissions from soils is calculated with an emission algorithm derived from a neural network (Delon et al., 2007). The equation is detailed below. NO flux is a function of soil moisture, soil temperature at two depths (5 and 20–30 cm), wind speed, soil pH, sand percentage, and fertilization rate (quantity of nitrogen given as

input to the soil).

$$\text{NOfluxnorm} = w_{24} + w_{25} \tanh(S1) + w_{26} \tanh(S2) + w_{27} \tanh(S3)$$

Where NOfluxnorm is the normalized NO flux. The normalization is used for all inputs and output to give them the same order of magnitude and facilitate the calculation process (Delon et al., 2007).

$$S1 = w_0 + \sum_{i=1}^7 w_i X_{j,\text{norm}}$$

$$S2 = w_8 + \sum_{i=9}^{15} w_i X_{j,\text{norm}}$$

$$S3 = w_{16} + \sum_{i=17}^{23} w_i X_{j,\text{norm}}$$

j is 1 to 7, $X_{1,\text{norm}}$ to $X_{7,\text{norm}}$ correspond to the seven normalized inputs, as follows:

$$j = 1: X_{1,\text{norm}} = c_1 + c_2 \times (\text{surface soil temperature}),$$

$$j = 2: X_{2,\text{norm}} = c_3 + c_4 \times (\text{surface WFPS}),$$

$$j = 3: X_{3,\text{norm}} = c_5 + c_6 \times (\text{deep soil temperature}),$$

$$j = 4: X_{4,\text{norm}} = c_7 + c_8 \times (\text{fertilisation rate}),$$

$$j = 5: X_{5,\text{norm}} = c_9 + c_{10} \times (\text{sand percentage}),$$

$$j = 6: X_{6,\text{norm}} = c_{11} + c_{12} \times \text{pH},$$

$$j = 7: X_{7,\text{norm}} = c_{13} + c_{14} \times (\text{wind speed}).$$

Weights w and normalisation coefficients c are given in Table 2.

WFPS = Water Filled Pore Space.

Biogenic NO emissions from soils in a Sahelian rangeland

C. Delon et al.

Title Page

Abstract

Introduction

Conclusions

References

Tables

Figures

⏪

⏩

◀

▶

Back

Close

Full Screen / Esc

Printer-friendly Version

Interactive Discussion



The resulting NO flux is obtained after de-normalization of NOfluxnorm ($\text{NOFlux} = x_{15} + x_{16} \times \text{NOfluxnorm}$).

A CRF is applied to the NO flux. The CRF ranges between 1 (no reduction because no vegetation, LAI = 0) and 0.83 (LAI = 1.8 at the most, Mougin et al., 2014).

Considering the CRF applied, the maximum quantity of N re-deposited above canopy during the wet months when LAI is at its maximum is negligible compared to the total N input from fecal, herbal and root masses. Indeed, the proportion of N re-deposition compared to total N input ranges between 0.24 and 1.5 %, depending on the year.

In this study, we use a new approach to calculate the fertilization rate (this input was given as constant in the previous versions of the algorithm). This approach is based on the one of Potter et al. (1996), who have developed an extended version of the CASA (Carnegie Ames Stanford) model, where potential emission of total nitrogen trace gases ($\text{N}_T = \text{NO} + \text{NO}_2 + \text{N}_2\text{O} + \text{N}_2$) at the soil surface is treated as a given percentage (2 %) of gross mineralized nitrogen at any given time step (this corresponds to the definition of the emission factor). This version of the simple conceptual model is not designed to distinguish between nitrification and denitrification as sources of N gases. In order to adapt this approach to our own study, we made the assumption that the sandy soil texture in Agoufou favours predominantly aerobic conditions and subsequently nitrification processes (Li et al., 2000; Blagodatsky et al., 2011). Furthermore, the WFPS remains below 20 % (volumetric soil moisture below 10 %), and according to Davidson (1991) the total oxidized N emitted would be composed of 95 to 100 % of NO.

In the present work, we have adapted the concept developed in CASA in a different way: the fertilization rate (i.e. N entering the soil and further available for NO emission) is 2 % (same percentage as in Potter et al., 1996) of the mineral N content in the soil (which depends both on N input and N content). The mineral N is obtained from STEP-GENDEC calculations. The main difference between Potter et al. (1996) approach and the one of this study is that the NO emission is now modulated by additional parameters such as pH and wind speed, as well as soil moisture and temperature which have an

BGD

12, 1155–1203, 2015

Biogenic NO emissions from soils in a Sahelian rangeland

C. Delon et al.

Title Page

Abstract

Introduction

Conclusions

References

Tables

Figures

◀

▶

◀

▶

Back

Close

Full Screen / Esc

Printer-friendly Version

Interactive Discussion



5 impact on both mineralization and emission. When soil moisture is too low, microbial
respiration is blocked in the model, microbial dynamics is frozen, and mineralization
is stopped. If the value of mineral N is 0, a minimum value of 0.01 g m^{-2} is applied as
a first guess in the NOFlux model to avoid null values of NO emission. Indeed, very little
15 is known about mineral N dynamics and subsequent NO emission at low soil moisture,
but experimental studies show low emission even during the dry season (Scholes et
al., 1997).

The principal advantage of this NO parameterization is to depend on different factors
at two levels. The first level concerns climatic impacts and environmental parameters,
10 such as precipitations, soil texture and pH, temperatures, wind speed, and the second
level concerns intrinsic processes of N turnover in the soil, through the organic matter
degradation from vegetation and livestock, and the microbial dynamics. The majority
of the first level variables are easily available on site or/and from atmospheric model
reanalysis and global databases, the second level is a sophistication of the model,
15 making it possible to add biotic processes in this parameterization of NO emission.

4 Results and discussion

Several parameters, included in the NO emission model, play an important role in
modulating emission. These parameters can be classified in two categories: physical
parameters (soil moisture and temperature, wind speed, sand percentage) which affect
20 substrate diffusion and oxygen supply in the soil and influence the microbial activity
(Skopp et al., 1990), and biogeochemical parameters (pH and fertilization rate related
to N content). In this paragraph, we will discuss the reliability of the simulated variables,
in order to assess the robustness of the simulated NO flux.

BGD

12, 1155–1203, 2015

Biogenic NO emissions from soils in a Sahelian rangeland

C. Delon et al.

Title Page

Abstract

Introduction

Conclusions

References

Tables

Figures

◀

▶

◀

▶

Back

Close

Full Screen / Esc

Printer-friendly Version

Interactive Discussion



4.1 Soil moisture

Soil moisture has a strong influence on NO emission from soils, particularly in hot and dry regions, as reported in the literature until today from studies at the global, regional, or local scale (Williams et al., 1992; Yienger and Levy, 1995; Meixner et al., 1997; Hartley and Schlesinger, 2000; Yan et al., 2005; Feig et al., 2008; Hudman et al., 2012). This variable needs to be well reproduced by the model in order to calculate reliable NO release. Volumetric soil moisture is calculated by STEP at different soil layers, using a tipping bucket approach. Figure 2 shows the volumetric soil moisture calculated by STEP between 0 and 2 cm from 2004 to 2008, compared to the volumetric soil moisture measured at Agoufou at 5 cm depth in 2005–2008. From 2006 to 2008, these measurements are actually an average of 3 datasets from soil moisture probes operating at the top, middle and bottom locations of dune slopes. In 2005, only bottom slope data were available.

The comparison between STEP and measurements in Fig. 2 is not direct, because depths are not exactly equivalent. Indeed, it is in general quite difficult to have in situ soil moisture measurements in the very first soil centimetres especially over sandy soils. Despite this, the comparison gives satisfying results from 2005 to 2008. In the surface layer, the measurements reach 10 to 12% during summers and show lower values during the dry season than those calculated by STEP. A threshold at 8% is observed on the STEP plot. This value corresponds to the field capacity calculated by STEP. In reality, this theoretical value may be overstepped, and water is not systematically transferred to the layer underneath. In the model, when the field capacity is reached, the excess water is transferred to the second layer, between 2 and 30 cm. The higher soil moisture peaks observed in the measurements as compared to STEP may be also due to the deeper soil depth at which the measurements are taken. For all years, the model is consistent and correctly reproduces the temporal dynamics, the increase and decrease of the soil moisture are well in phase, and the filling and emptying of the

BGD

12, 1155–1203, 2015

Biogenic NO emissions from soils in a Sahelian rangeland

C. Delon et al.

Title Page

Abstract

Introduction

Conclusions

References

Tables

Figures

◀

▶

◀

▶

Back

Close

Full Screen / Esc

Printer-friendly Version

Interactive Discussion



surface layer is reasonably well represented. The determination coefficient between model and measurements R^2 is 0.70 for all years.

4.2 Soil temperature

Soil temperature is also an important variable for modelling NO emissions from soils. In tropical regions, emissions are mostly driven by soil moisture, but temperature influence has to be taken into account, especially during the dry season when soil moisture is very low (Butterbach-Bahl et al., 2004b; Yao et al., 2010). Figure 3 shows the soil temperature calculated in the two first STEP layers and compared to measurements at 5 and 30 cm at Agoufou from 2005 to 2008. Temperatures at both levels are needed in the NOFlux model. The seasonal cycle is well reproduced by the model, with some missing high frequency variations due to rain events during the wet season. The determination coefficient R^2 between the simulated and measured temperatures in the surface layer is 0.86, and 0.82 in the 30 cm layer, showing a good representation of temperature at both levels in the model.

4.3 Aboveground and litter vegetation

The temporal variation of the green living biomass, dry standing biomass (or standing straw), surface litter and buried litter is simulated and compared to measurements at Agoufou (except for buried litter because no measurements are available). Green biomass begins to increase between 20 June to 25 for years 2004 and 2005, and between 10 and 15 July for years 2006 to 2008, when the surface soil moisture is above the wilting point during 5 consecutive days (green in Fig. 4). In 2004–2008 respectively, the cumulative rain is 191, 418, 376, 286, and 227 mm. The maximum of green biomass simulated by STEP is 80, 205, 192, 161 and 104 g(d.m.) m⁻² (d.m. = dry matter), when the respective measurements give 47, 224, 174, 150 and 82 g(d.m.) m⁻² in 2004–2008. In 2004, two distinct growing phases are simulated, corroborated by measurements. Indeed, the first green biomass growth is interrupted due to a lack of

BGD

12, 1155–1203, 2015

Biogenic NO emissions from soils in a Sahelian rangeland

C. Delon et al.

Title Page

Abstract

Introduction

Conclusions

References

Tables

Figures

◀

▶

◀

▶

Back

Close

Full Screen / Esc

Printer-friendly Version

Interactive Discussion



Biogenic NO emissions from soils in a Sahelian rangeland

C. Delon et al.

Title Page

Abstract

Introduction

Conclusions

References

Tables

Figures

◀

▶

◀

▶

Back

Close

Full Screen / Esc

Printer-friendly Version

Interactive Discussion



rainfall, and starts again later in the season. The maximum simulated green biomass value seems to be slightly late in 2006 and 2007, and early in 2008, compared to measurements, whereas the seedling emergence is correctly simulated for these three years. In 2008, the quantity of precipitation is lower, but the soil moisture is sufficient to trigger seedling emergence in the model. Overall, simulations and measurements are in good agreement with $R^2 = 0.72$ for green biomass for the five years.

The change over time of the herbaceous standing mass is driven by mechanical and biological degradation, influenced, among other causes, by livestock grazing. Forage consumption and trampling by livestock have major effects on herbage offtake, decay and decomposition including seed dispersal (Tracol et al., 2006). The STEP model allows the drying from green to dry standing biomass, and the degradation of the dry biomass by livestock. The minimum value for the initialization of dry standing biomass in 2004 is $10 \text{ g(d.m.) m}^{-2}$. The increase of the senescent aboveground biomass at the end of the wet season is well reproduced by the simulation (light blue in Fig. 4). R^2 between simulations and measurements is 0.56 for dry standing biomass for the five years of simulation. The maximum of dry standing biomass is underestimated in 2006 and 2008 and well reproduced in 2004 (despite a particular feature) and 2007. No measurements were available for year 2005.

The minimum value for the initialization of the surface litter in 2004 (red in Fig. 4) is $30 \text{ g(d.m.) m}^{-2}$. The maximum value is encountered in December–January (end of november in 2004). Litter decay is sharper in the measurements than in the simulation, with minimum occurring in the middle of the wet season. R^2 between simulations and measurements is 0.5 for litter for the five years of simulation.

The evolution of simulated buried litter (dark blue in Fig. 4) is closely linked to that of surface litter. The first days of rain induce a sharp decrease of buried litter, which is rapidly decomposed. The minimum is observed in september (August in 2004), when it begins to increase again with the surface litter accumulation. That accumulation feeds the C and N pools, and is the N resource for soil mineral N and N losses to the atmosphere.

The evaluation of the model in terms of vegetation dynamics, quantity, and production of surface litter seems to be reliable, despite time lags in some cases. Therefore, the quantity of organic matter (via the buried litter), likely to be degraded and to produce N in the soil, can be considered as correctly reproduced by the model.

4.4 N content in the soil

The N content calculated by the model has been compared to N content analysis made on 35 different soil samples in Agoufou (sampled in July 2004). Results from soil samples give a mean total N content of $0.20 \pm 0.14 \text{ g kg}^{-1}$ (or 0.02 %), with a mean C : N ratio of 9.80 ± 1.11 . Diallo and Gjessing (1999) have mentioned 0.011 % of total N in sandy soils of the Gourma region, where Agoufou is situated. However, the few studies performed on arid or semi arid soils showed that high microbial metabolism and high turnover rates of little nutrients might be major explanatory factors of the observed NO fluxes (Meixner and Yang (2006) and references therein). In the model, the total soil N content is the sum of mineral N, organic N and microbial N (Fig. 5). To convert the model output in g(N)m^{-2} to percentage, we assume a density of 1500 kg m^{-3} for the soil, according to De Rosnay et al. (2009), and we apply this value to the first 2 cm of the soil (first layer in the model). Yearly means range from 0.016 % in 2004, 0.023 % in 2005, 0.030 % in 2006 to 0.035 % in 2007 and 2008. To compare directly to measurements, we have calculated the average for the 15 first days of July in the model, and obtained 0.020 % in 2004, 0.022 % in 2005, 0.031 % in 2006 to 0.037 % in 2007 and 2008, values that are representative of the beginning of the wet season, and very close to measurements at the same dates. It is rather difficult to find direct comparisons to ensure the model initializations in terms of N content and N dynamics in the region of the Sahel. However, some studies like De Bruin et al. (1989) and Krul et al. (1982) show from incubation results that after the long dry season the soil contains approximately 14 kg(N) ha^{-1} (approximately 0.005 %, lower than our results) in the first 10 cm, and the nitrogen flush after the intensive first rains is about 7 to 8 kg(N) ha^{-1} . In the next paragraph, we will see that our results imply the same kind of emissions at

BGD

12, 1155–1203, 2015

Biogenic NO emissions from soils in a Sahelian rangeland

C. Delon et al.

Title Page

Abstract

Introduction

Conclusions

References

Tables

Figures

⏪

⏩

◀

▶

Back

Close

Full Screen / Esc

Printer-friendly Version

Interactive Discussion



**Biogenic NO
emissions from soils
in a Sahelian
rangeland**

C. Delon et al.

[Title Page](#)[Abstract](#)[Introduction](#)[Conclusions](#)[References](#)[Tables](#)[Figures](#)[◀](#)[▶](#)[◀](#)[▶](#)[Back](#)[Close](#)[Full Screen / Esc](#)[Printer-friendly Version](#)[Interactive Discussion](#)

After the end of the wet season, when the maximum of green biomass is reached, the vegetation starts to dry out while still standing, then falls on the surface and begins to decompose since the soil surface moisture is still relatively high. The vegetation decomposition at that moment is responsible for the peak of emission observed in the late wet/early dry season. Afterwards, the soil surface moisture decreases, leading to low NO emissions. During the dry season, emissions are reduced, but still present, and mostly driven by surface temperature. Actually, the influence of temperature also exists during the wet season, but is dominated by soil moisture effect.

Though the strong dependance of NO fluxes on soil moisture, the total rainfall amount in a year does not appear to be essential for the amplitude of the fluxes. Indeed, though 2008 rainfall amount is less important than in 2005–2007, the annual and wet season NO flux averages are larger in 2008. This is not the case in 2004, and could be attributed to the fact that 2008 wet season begins earlier and ends later than in the other years, allowing more efficient and more frequent pulse events.

Some wet season measurements performed at Agoufou in July 2004 and August 2005 are reported in Table 3, and shown in Fig. 6b with modelled fluxes. The model underestimates the measurements in 2004 (10 points), and overestimates them in 2005 (3 points). However, modelled fluxes are in the range of measured fluxes. In Table 3, they are compared to other measurements made in other types of semi arid ecosystems, and to wet season measurements in Banizoumbou (Niger), situated in a dry savanna site and presenting the same type of vegetation (Delon et al., 2012). Data from this study are also compared to other simulations done with the ISBA model (Interactions Soil Biosphere Astmosphere) used to simulate emission and deposition N fluxes in dry savannas in a previous study (Delon et al., 2010, 2012), where the N input (fertilization rate) was constant in time, and equivalent to $5.5 \text{ kg(N) ha}^{-1} \text{ yr}^{-1}$.

These results show that the coupled STEP-GENDEC-NO model gives fluxes in the order of known experimental or simulated data, while not exactly equivalent to measurements at the Agoufou site in 2004 and 2005. Several studies have shown different ranges of NO fluxes, but always with a strong link to soil moisture. As

a comparison, Butterbach-Bahl et al. (2004b) found average fluxes of $18 \text{ kg(N) ha}^{-1} \text{ yr}^{-1}$ in tropical forests soils at the transition between dry and wet season, where the quantity of decomposed litter is far greater than in dry savanna sites of the Sahel, and where the nutrient content of the soil is far larger, since semi arid soils are generally nutrient poor.

The ratios of fluxes from wet to dry seasons in this study are 2.3, 2.9, 3.0, 3.1 and 3.0 respectively for the years 2004–2008, in the (lower) range of what has been reported in the literature (Meixner and Yang, 2006), but showing undoubtedly the difference between the two periods in terms of emission.

4.5.2 Sensitivity tests

Several sensitivity tests have been performed in the NOFlux model to highlight the effects of soil temperature, soil humidity, and mineral N content on the NO flux to the atmosphere. The sensitivity of NO emission to deep soil temperature and wind speed will not be shown here, because their influence on NO emission is less important. In the first example (Fig. 8), soil moisture is set successively to a low (2%) and a high (10%) value, associated respectively to a low (0.01 gm^{-2}) and a high (0.1 gm^{-2}) value of mineral N content in the soil. The associated high and low values of mineral N with soil moisture have been chosen according to realistic outputs given by the GENDEC model (see Fig. 7), and corresponding to dry and wet season quantities. The results are shown for year 2006 only, to lighten the figures, because 2006 is a standard year in terms of pluviometry, and the same conclusions would appear anyway for the other years. When soil moisture is low and constant (associated to low and constant mineral N content), NO fluxes are only driven by soil temperature at high (diurnal) frequency. Pulses usually linked to soil moisture variation do not occur and the mean value of the flux remains low. When soil moisture is high (associated to a high value of mineral N content), the mean value of the flux is larger, directly resulting from high mineral N content. The seasonal cycle of fluxes is not correlated to the seasonal cycle of soil

BGD

12, 1155–1203, 2015

Biogenic NO emissions from soils in a Sahelian rangeland

C. Delon et al.

Title Page

Abstract

Introduction

Conclusions

References

Tables

Figures

◀

▶

◀

▶

Back

Close

Full Screen / Esc

Printer-friendly Version

Interactive Discussion



temperature, as already found by Meixner and Yang (2006) (low frequency variation), whereas their diurnal cycle are correlated, in accordance with previous studies. As an example, Ludwig et al. (2001) have stated that soil temperature fluctuations can explain short term variations of NO fluxes.

In the second example (Fig. 9), soil moisture and mineral N content are not forced, soil surface and bottom temperatures are set successively to both a low (33 and 32 °C respectively) and a high (48 and 47 °C respectively) value, for the year 2006. These temperatures correspond to possible values encountered during the dry and wet seasons. At the beginning of the year, during the dry season, the soil moisture is low, and fluxes are constant if soil temperature is constant. During both seasons, the lowest NO fluxes are found for the highest values of soil temperature, even if differences are reduced between mean annual fluxes (1.08 vs. 0.69 kg(N) ha⁻¹ yr⁻¹ for $T = 33$ and $T = 48$ °C respectively) despite a large temperature difference (15 °C). Temperature effect on NO emissions has been studied in other circumstances, and is still under debate still no clear conclusion could be raised. Contrasted results have been found in tropical and temperate regions: most studies have shown that NO emissions increase with increasing temperature as reported for example in Martin et al. (1995), Meixner and Yang (2006), and Van Dijk and Meixner (2001), other studies do not find any clear tendency (Cardenas et al., 1994; Sullivan, 1996), while Butterbach-Bahl et al. (2004b) find a linear relationship during only certain periods of the year in a tropical rain forest. Temperature effect in our study is moderate in dry season, and almost not visible in wet season.

In addition, soil pH effects have also been tested (not shown here), within a reasonable range of pH from 6.1 to 8. Pulse effects and modulation by soil temperature present the same feature as in the reference case, with a slight decrease of the base level when pH increases. Serça et al. (1994) and Yan et al. (2005) have also found the same kind of variation, with decreasing emissions while increasing pH in tropical soils.

BGD

12, 1155–1203, 2015

**Biogenic NO
emissions from soils
in a Sahelian
rangeland**

C. Delon et al.

Title Page

Abstract

Introduction

Conclusions

References

Tables

Figures

◀

▶

◀

▶

Back

Close

Full Screen / Esc

Printer-friendly Version

Interactive Discussion



Sensitivity tests of the NO emission model used in this study have already been explored in Delon et al. (2007) for the elaboration of the model. The most straightforward conclusion from these tests is that soil moisture is the main driver for NO fluxes in the particular conditions of semi arid soils (with immediate effect on soil N content), modulated by soil temperature effect (mostly visible during the dry season) and adjusted by soil pH and wind effects.

5 Limitations and uncertainties

Estimating NO fluxes in semi arid regions through modeling studies remains a difficult exercise, considering the scarcity of data. Uncertainties in the calculation of NO fluxes in the model are related to uncertainties on the main drivers of NO emission, i.e. soil moisture, and mineral N. Furthermore, the mineral N concentration in the soil is also driven by soil moisture. The uncertainty on the NO flux has been estimated around 20% when calculated with the present algorithm (Delon et al., 2010). Despite the scarcity of validation flux measurements, and of data on N cycle in the soil, this work gives results that can be added to the existing knowledge on emission processes. Simulated fluxes are in the order of magnitude of previous measurements performed in the same semi arid region. As mentioned in Davidson et al. (2000), a model based on regression parameters between NO emissions and nitrogen cycling in the ecosystem will have only order of magnitude prediction accuracy. The temporal variation of the quantity of live and dry biomass (straw and litter) have been accurately compared to measurements, but the case is different for the seasonal cycles of the N pools in the soil. Comparisons have been made with the available experimental data at a given time, but do not give access to the whole yearly cycle. The mineral N concentration in the soil used as input in the calculation of NO fluxes is set to zero by the model during the dry season because the respiration of microbes is blocked when soil moisture is too low. In this work it was set to a non zero value to avoid null NO fluxes. This value should

**Biogenic NO
emissions from soils
in a Sahelian
rangeland**

C. Delon et al.

Title Page

Abstract

Introduction

Conclusions

References

Tables

Figures



Back

Close

Full Screen / Esc

Printer-friendly Version

Interactive Discussion



be moderated and readjusted according to experimental results of available nitrogen in the soil during the dry season.

While the STEP model was initially designed for 1-D-simulations in well documented study sites, it has also been recently used at the regional scale in the Sahelian belt (12–20° N; 20° W–35° E) by Pierre et al. (2012) and Pierre et al. (2011), to estimate the amount of dust emissions in that region. The NO flux model has also been applied in the region of Niamey, Niger (Delon et al., 2008), to reproduce NO pulses at the beginning of the wet season, and their impact on ozone formation during the AMMA field campaign in 2006. Furthermore, it has been used at the regional scale in the Sahel (Delon et al., 2010) and in West Africa (Delon et al., 2012) to calculate NO release to the atmosphere. Concerning the GENDEC model, it has been successfully applied for situations very different from those upon which it was based (Moorhead and Reynolds, 1993; Moorhead et al., 1996). In other words, we can seriously consider using this coupled STEP-GENDEC-NOflux model in the Sahelian belt by making approximations, concerning for example biomass, livestock, N and C pools. Considering the need of information in this region of the world, it would be conceivable to simulate such processes of emissions at a larger scale. The challenge is worth to be done, knowing that NO emissions participate at a larger scale to the production of tropospheric ozone.

6 Conclusions

The present work is an attempt to estimate NO fluxes in the semi arid region of the Sahel. Simulations are performed at the site of Agoufou (Mali), with a coupled vegetation–litter decomposition–NO emission model, for years 2004–2008. The vegetation model STEP correctly reproduces the temporal dynamics of soil moisture in the first layer of the model (layer involved in the soil N cycle), as well as the increase and decrease, and the filling and emptying of the surface layer. The temperature in the first two layers of the model are also in accordance with measurements. The green and dry biomass calculated by STEP show a correct feature when compared to measurements

BGD

12, 1155–1203, 2015

Biogenic NO emissions from soils in a Sahelian rangeland

C. Delon et al.

Title Page

Abstract

Introduction

Conclusions

References

Tables

Figures

⏪

⏩

◀

▶

Back

Close

Full Screen / Esc

Printer-friendly Version

Interactive Discussion



in terms of vegetation growth, vegetation quantity, decay and production of litter, despite slight time lags in the peak of green biomass for the years 2006 and 2008. The quantity of N is calculated in GENDEC, and is directly derived from organic matter and C contents, both quantities calculated from litter degradation and microbial dynamics in the soil. Sahelian soils are usually considered as N poor, and the comparison of the N content in the soil calculated in GENDEC (around 0.2–0.3%) is well in accordance with experimental values, and with the few references found in the literature. The coupling between the three models is successful, and well adapted to the specific functioning of semi arid ecosystems, where mechanistic models have usually not been tested. The biomass management in the Sahel is also driven by the presence of livestock, which provides fecal biomass and buries surface litter by trampling.

The quantity of N in the soil is the consequence of the presence of vegetation and livestock at the surface, and mineral N constitutes the N pool available for N release to the atmosphere, in the form of NO (and other compounds). The NO flux calculated by the model is of course highly dependent on soil moisture, as well as on mineral nitrogen, and a 2% fraction of this pool is used as input to calculate the NO release, modulated by the effect of environmental parameters such as wind speed, soil moisture and temperature, pH and sand percentage. Simulated NO emissions during the wet season are in the same order as previous measurements made in several sites where the vegetation and the soil are comparable to the ones in Agoufou. Very few measurements have been made during the dry season, which complicates the validation of the modelling results for that season. However, the annual budget of emissions is mostly dominated by emissions occurring during the wet season, as already highlighted in different studies in semi arid regions.

This modelling study has been strengthened at each step of the calculation process by comparison with experimental values. It would be necessary to obtain more measurements through field campaigns, especially for the N content in the soil, the grazing pressure, the soil N uptake by plants, and the concentrations and fluxes of N compounds in the atmosphere. Taking into account the difficulty of organizing field

BGD

12, 1155–1203, 2015

Biogenic NO emissions from soils in a Sahelian rangeland

C. Delon et al.

Title Page

Abstract

Introduction

Conclusions

References

Tables

Figures



Back

Close

Full Screen / Esc

Printer-friendly Version

Interactive Discussion



campaigns in these remote regions, modelling is an essential tool to link N cycles both in the soil and in the atmosphere, and to understand specific processes involved in semi arid regions. This study is a step forward in the representation of biogenic NO release to the atmosphere in semi arid regions, where processes of emissions are usually adapted from temperate regions, and not specifically designed for semi arid ecosystems.

References

- Adon, M., Galy-Lacaux, C., Yoboué, V., Delon, C., Lacaux, J. P., Castera, P., Gardrat, E., Pienaar, J., Al Ourabi, H., Laouali, D., Diop, B., Sigha-Nkamdjou, L., Akpo, A., Tathy, J. P., Lavenu, F., and Mougou, E.: Long term measurements of sulfur dioxide, nitrogen dioxide, ammonia, nitric acid and ozone in Africa using passive samplers, *Atmos. Chem. Phys.*, 10, 7467–7487, doi:10.5194/acp-10-7467-2010, 2010. 1163, 1164
- Adon, M., Galy-Lacaux, C., Delon, C., Yoboué, V., Solmon, F., and Kaptue Tchente, A. T.: Dry deposition of nitrogen compounds (NO₂, HNO₃, NH₃), sulfur dioxide and ozone in west and central African ecosystems using the inferential method, *Atmos. Chem. Phys.*, 13, 11351–11374, doi:10.5194/acp-13-11351-2013, 2013. 1163
- Blagodatsky, S., Grote, R., Kiese, R., Werner, C., and Butterbach-Bahl, K.: Modelling of microbial carbon and nitrogen turnover in soil with special emphasis on N-trace gases emission, *Plant Soil*, 346, 297–330, 2011. 1169, 1171
- Butterbach-Bahl, K., Kesik, M., Miehle, P., Papen, H., and Li, C.: Quantifying the regional source strength of N-trace gases across agricultural and forest ecosystems with process based models, *Plant Soil*, 260, 311–329, 2004a. 1157
- Butterbach-Bahl, K., Kock, M., Willibald, G., Hewett, B., Buhagiar, S., Papen and Kiese, R.: Temporal variations of fluxes of NO, NO₂, N₂O, CO₂ and CH₄ in a tropical rain forest ecosystem, *Global Biogeochem. Cy.*, 18, GB3012, doi:10.1029/2004GB002243, 2004b. 1174, 1177, 1179, 1180
- Butterbach-Bahl, K., Kahl, M., Mykhayliv, L., Werner, C., Kiese, R., and Li, C.: A European-wide inventory of soil NO emissions using the biogeochemical model DNDC/Forest-DNDC, *Atmos. Environ.*, 43, 1392–1402, 2009. 1157

Biogenic NO emissions from soils in a Sahelian rangeland

C. Delon et al.

Title Page

Abstract

Introduction

Conclusions

References

Tables

Figures

◀

▶

◀

▶

Back

Close

Full Screen / Esc

Printer-friendly Version

Interactive Discussion



Biogenic NO emissions from soils in a Sahelian rangeland

C. Delon et al.

Title Page

Abstract

Introduction

Conclusions

References

Tables

Figures



Back

Close

Full Screen / Esc

Printer-friendly Version

Interactive Discussion



Cardenas, L., Rondon, A., Johansson, C., and Sanhueza, E.: Effects of soil moisture, temperature and inorganic nitrogen on nitric oxide emissions from acidic tropical savannah soils, *J. Geophys. Res.*, 98, 14783–14790, 1994. 1180

Conrad, R.: Compensation concentration as critical variable for regulating the flux of trace gases between soil and atmosphere, *Biogeochemistry*, 27, 155–170, 1994. 1158

Conrad, R.: Soil microorganisms as controllers of atmospheric trace gases (H₂, CO, CH₄, OCS, N₂O, and NO), *Microbiol. Rev.*, 60, 609–640, 1996. 1157, 1158

Davidson, E. A.: Fluxes of nitrous oxide and nitric oxide from terrestrial ecosystems, in: *Microbial Production and Consumption of Greenhouse Gases: Methane, Nitrogen Oxides and Halomethanes*, edited by: Rogers, J. E. and Whitman, W. B., American Society for Microbiology, Washington, 219–235, 1991. 1162, 1163, 1171

Davidson, E. A. and Kinglerlee, W.: A global inventory of nitric oxide emissions from soils, *Nutr. Cycl. Agroecosys.*, 48, 37–50, 1997. 1158

Davidson, E. A., Keller, M., Erickson, H. E., Verchot, L. V., and Veldkamp, E.: Testing a conceptual model of soil emissions of nitrous and nitric oxides, *Bioscience*, 50, 667–680, 2000. 1165, 1181

De Bruin, B., Penning de Vries, F. W. T., Van Broekhoven, L. W., Vertrgt S. C., and Van de Geijn, N.: Net mineralization, nitrification and CO₂ production in alternating moisture conditions in an unfertilized low humus sandy soil from the Sahel, *Plant Soil*, 113, 69–78, 1989. 1176

Delmas, R., Peuch, V.-H., Megie, G., and Brasseur, G. P.: Emissions anthropiques et naturelles et dépôts, Chap. 5, in: *Physique et Chimie de l'Atmosphère*, Belin, ISBN: 2-7011-3700-4, 1995 (in French). 1157

Delon, C., Serça, D., Boissard, C., Dupont, R., Dutot, A., Laville, P., de Rosnay, P., and Delmas, R.: Soil NO emissions modelling using artificial neural network, *Tellus B*, 59B, 502–513, 2007. 1164, 1165, 1169, 1170, 1181, 1194

Delon, C., Reeves, C. E., Stewart, D. J., Serça, D., Dupont, R., Mari, C., Chaboureaud, J.-P., and Tulet, P.: Biogenic nitrogen oxide emissions from soils – impact on NO_x and ozone over West Africa during AMMA (African Monsoon Multidisciplinary Experiment): modelling study, *Atmos. Chem. Phys.*, 8, 2351–2363, doi:10.5194/acp-8-2351-2008, 2008. 1165, 1182

Delon, C., Galy-Lacaux, C., Boone, A., Lioussé, C., Serça, D., Adon, M., Diop, B., Akpo, A., Lavenu, F., Mougín, E., and Timouk, F.: Atmospheric nitrogen budget in Sahelian dry

Biogenic NO emissions from soils in a Sahelian rangeland

C. Delon et al.

[Title Page](#)[Abstract](#)[Introduction](#)[Conclusions](#)[References](#)[Tables](#)[Figures](#)[◀](#)[▶](#)[◀](#)[▶](#)[Back](#)[Close](#)[Full Screen / Esc](#)[Printer-friendly Version](#)[Interactive Discussion](#)

savannas, *Atmos. Chem. Phys.*, 10, 2691–2708, doi:10.5194/acp-10-2691-2010, 2010. 1159, 1163, 1165, 1178, 1181, 1182, 1194

Delon, C., Galy-Lacaux, C., Adon, M., Lioussse, C., Serça, D., Diop, B., and Akpo, A.: Nitrogen compounds emission and deposition in West African ecosystems: comparison between wet and dry savanna, *Biogeosciences*, 9, 385–402, doi:10.5194/bg-9-385-2012, 2012. 1178, 1182

De Rosnay, P., Gruhier, C., Timouk, F., Baup, F., Mougin, E., Hiernaux, P., Kergoat, L., and LeDantec, V.: Multiscale soil moisture measurements at the Gourma meso-scale site in Mali, *J. Hydrol.*, 375, 241–252, 2009. 1161, 1176

Diallo, A. and Gjessing, J.: Natural resources management: morpho-pedology in Gourma region, SSE Research program Mali-Norway, CNRST-IER-Oslo University (Norway), 1999 (in French). 1176

Feig, G. T., Mamtimin, B., and Meixner, F. X.: Soil biogenic emissions of nitric oxide from a semi-arid savanna in South Africa, *Biogeosciences*, 5, 1723–1738, doi:10.5194/bg-5-1723-2008, 2008. 1157, 1173

Firestone, M. K. and Davidson, E. A.: Microbial basis of NO and N₂O production and consumption in soil, in: *Exchange of Trace Gases Between Terrestrial Ecosystems and the Atmosphere*, edited by: Andreae, M. O. and Schimel, D. S., John Wiley and Sons, New York, pp. 7–21 1989. 1165

Fowler, D., Pilegaard, K., Sutton, M. A., et al.: Atmospheric composition change: Ecosystems-Atmosphere interactions, *Atmos. Environ.*, 43, 5193–5267, 2009. 1157

Frison, P. L., Mougin, E., and Hiernaux, P.: Observations and interpretation of ERS wind-scatterometer data over northern Sahel (Mali), *Remote Sens. Environ.* 63, 233–242, 1998. 1166

Galbally, I. E. and Johansson, C.: A model relating laboratory measurements of rates of nitric oxide production and field measurements of nitric oxide emission from soils, *J. Geophys. Res.*, 94, 6473–6480, 1989. 1157

Galbally, I. E., Kirstine, W. V., Meyer, Y. P., and Wang, C. P.: Soil-atmosphere trace gas exchange in semiarid and arid zones, *J. Environ. Qual.*, 37, 599–607, 2008.

Hartley, A. E. and Schlesinger, W. H.: Environmental controls on nitric oxide emission from northern Chihuahuan desert soils, *Biogeochemistry*, 50, 279–300, 2000. 1173, 1194

Hiernaux, P. and Le Houérou, H. N.: Les parcours du Sahel, *Science et changement planétaire/Sècheresse*, 17, 51–71, 2006 (in French). 1161

Biogenic NO emissions from soils in a Sahelian rangeland

C. Delon et al.

[Title Page](#)

[Abstract](#)

[Introduction](#)

[Conclusions](#)

[References](#)

[Tables](#)

[Figures](#)

[⏪](#)

[⏩](#)

[◀](#)

[▶](#)

[Back](#)

[Close](#)

[Full Screen / Esc](#)

[Printer-friendly Version](#)

[Interactive Discussion](#)



- Hiernaux, H., Mougin, E., Diarra, L., Soumaguel, N., Lavenu, F., Tracol, Y., and Diawara, M.: Sahelian rangeland response to changes in rainfall over two decades in the Gourma region, Mali, *J. Hydrol.*, 375, 114–127, 2009. 1160, 1161
- 5 Hudman, R. C., Russell, A. R., Valin, L. C., and Cohen, R. C.: Interannual variability in soil nitric oxide emissions over the United States as viewed from space, *Atmos. Chem. Phys.*, 10, 9943–9952, doi:10.5194/acp-10-9943-2010, 2010. 1158
- Hudman, R. C., Moore, N. E., Mebust, A. K., Martin, R. V., Russell, A. R., Valin, L. C., and Cohen, R. C.: Steps towards a mechanistic model of global soil nitric oxide emissions: implementation and space based-constraints, *Atmos. Chem. Phys.*, 12, 7779–7795, doi:10.5194/acp-12-7779-2012, 2012. 1157, 1158, 1159, 1173
- 10 Jaeglé, L., Martin, R. V., Chance, K., Steinberger, L., Kurosu, T. P., Jacob, D. J., Modi, A. I., Yoboué, V., Sigha-Nkamdjou, L., and Galy-Lacaux, C.: Satellite mapping of rain-induced nitric oxide emissions from soils, *J. Geophys. Res.*, 109, D23S17, doi:10.1029/2003JD004406, 2004. 1158
- 15 Jambert, C., Serça, D., and Delmas, R.: Quantification of N-losses as NH₃, NO, and N₂O and N₂ from fertilized maize fields in southwestern France, *Nutr. Cycl. Agroecosys.*, 48, 91–104, 1997. 1162
- Jarlan, L., Mougin, E., Frison, P. L., Mazzega, P., and Hiernaux, P.: Analysis of ERS wind scatterometer time series over Sahel (Mali), *Remote Sens. Environ.*, 81, 404–415, 2002. 1166
- 20 Jarlan, L., Mangiarotti, S., Mougin, E., Mazzega, P., Hiernaux, P., and Le Dantec, V.: Assimilation of SPOT/VEGETATION NDVI data into a sahelian vegetation dynamics model, *Remote Sens. Environ.*, 112, 1381–1394, 2008. 1166, 1168
- Kesik, M., Ambus, P., Baritz, R., Brümman, N., Butterbach-Bahl, K., Damm, M., Duyzer, J., Horváth, L., Kiese, R., Kitzler, B., Leip, A., Li, C., Pihlatie, M., Pilegaard, K., Seufert, S., Simpson, D., Skiba, U., Smiatek, G., Vesala, T., and Zechmeister-Boltenstern, S.: Inventories of N₂O and NO emissions from European forest soils, *Biogeosciences*, 2, 353–375, doi:10.5194/bg-2-353-2005, 2005. 1157
- 25 Kim, D.-G., Vargas, R., Bond-Lamberty, B., and Turetsky, M. R.: Effects of soil rewetting and thawing on soil gas fluxes: a review of current literature and suggestions for future research, *Biogeosciences*, 9, 2459–2483, doi:10.5194/bg-9-2459-2012, 2012. 1158
- Krul, J. M., Penning de Vries, F. W. T., and Traore, K.: Les processus du bilan d'azote, in: *La Productivite des Paturages Saheliens*, edited by: Penning de Vries, P. W. T. and Djiteye,

Biogenic NO emissions from soils in a Sahelian rangeland

C. Delon et al.

[Title Page](#)
[Abstract](#)
[Introduction](#)
[Conclusions](#)
[References](#)
[Tables](#)
[Figures](#)
[Back](#)
[Close](#)
[Full Screen / Esc](#)
[Printer-friendly Version](#)
[Interactive Discussion](#)


M. A., Agr. Res. Rep., 916. Pudoc, Wageningen, the Netherlands, 226–246, 1982. 1176, 1177

Laouali, D., Galy-Lacaux, C., Diop, B., Delon, C., Orange, D., Lacaux, J. P., Akpo, A., Lavenu, F., Gardrat, E., and Castera, P.: Long term monitoring of the chemical composition of precipitation and wet deposition fluxes over three Sahelian savannas, *Atmos. Environ.*, 50, 314–327, 2012. 1165

Laville, P., Lehuger, S., Loubet, B., Chaumartin, F., and Cellier, P.: Effect of management, climate and soil conditions on N₂O and NO emissions from an arable crop rotation using high temporal resolution measurements, *Agr. Forest Meteorol.*, 151, 228–240, 2011. 1162, 1163, 1164

Le Roux, X., Abbadie, L., Lensi, R., and Serça, D.: Emission of nitrogen monoxide from African tropical ecosystems: control of emission by soil characteristics in humid and dry savannas of West Africa, *J. Geophys. Res.*, 100, 23133–23142, 1995. 1194

Lo Seen, D., Mougín, E., Rambal, S., Gaston, A., and Hiernaux, P.: A regional sahelian grassland model to be coupled with multispectral satellite data. II. Towards the control of its simulations by remotely sensed indices, *Remote Sens. Environ.*, 52, 194–206, 1995. 1166

Li, C., Aber, J., Stange, F., Butterbach-Bahl, K., and Papen, H.: A process-oriented model of N₂O and NO emissions from forest soils: 1. Model development, *J. Geophys. Res.*, 105, 4369–4384, 2000. 1157, 1171

Ludwig, J., Meixner, F. X., Vogel, B., and Forstner, J.: Soil-air exchange of nitric oxide: an overview of processes, environmental factors, and modelling studies, *Biogeochemistry*, 52, 225–257, 2001. 1157, 1158, 1180

Martin, R. E., Scholes, M. C., Mosier, A. R., Ojima, D. S., Holland, E. A., and Parton, W. J.: Controls on annual emissions of nitric oxide from soils of the Colorado shortgrass steppe, *Global Biogeochem. Cy.*, 12, 8191, 1998. 1180

McCalley, C. K. and Sparks, J. P.: Controls over nitric oxide and ammonia emissions from Mojave Desert soils, *Oecologia*, 156, 871–881, 2008. 1157

Meixner, F. X. and Yang, W. X.: Biogenic emissions of nitric oxide and nitrous oxide from arid and semi-arid land, in: *Dryland Ecohydrology*, edited by: DÓdoroco, P. and Porporato, A., Kluwer Academic Publishers B. V., Dordrecht, the Netherlands, 233–255, 2006. 1176, 1179, 1180

Biogenic NO emissions from soils in a Sahelian rangeland

C. Delon et al.

Title Page

Abstract

Introduction

Conclusions

References

Tables

Figures

◀

▶

◀

▶

Back

Close

Full Screen / Esc

Printer-friendly Version

Interactive Discussion



- Meixner, F. X., Fickinger, T., Marufu, L., Serça, D., Nathaus, F. J., Makina, E., Mukurumbira, L., and Andreae, M. O.: Preliminary results on nitric oxide emission from a southern African savanna ecosystem, *Nutr. Cycl. Agroecosys.*, 48, 123–138, 1997. 1157, 1173
- Moorhead, D. L. and Reynolds, J. F.: A general model of litter decomposition in the northern Chihuahuan desert, *Ecol. Model.*, 56, 197–219, 1991. 1165, 1168
- Moorhead, D. L. and Reynolds, J. F.: Effects of climate change on decomposition in arctic tussock tundra: a modelling synthesis, *Arctic Alpine Res.*, 25, 403–412, 1993. 1182
- Moorhead, D. L., Sinsabaugh, R. L., Linkins, A. E., and Reynolds, J. F.: Decomposition processes: modelling approaches and applications, *Sci. Total Environ.*, 183, 137–149, 1996. 1182
- Mougin, E., Lo Seen, D., Rambal, S., Gaston, A., and Hiernaux, P.: A regional Sahelian grassland model to be coupled with multispectral satellite data. I: Model description and validation, *Remote Sens. Environ.*, 52, 181–193, 1995. 1165, 1168
- Mougin, E., Hiernaux, P., Kergoat, L., Grippa, M., De Rosnay, P., Timouk, F., Le Dantec, V., Demarez, V., Arjounin, M., Lavenu, F., Soumaguel, N., Ceschia, E., Mougnot, B., Baup, F., Frappart, F., Frison, P. L., Gardelle, J., Gruhier, C., Jarlan, L., Mangiarotti, S., Sanou, B., Tracol, Y., Guichard, F., Trichon, V., Diarra, L., Soumaré, A., Koité, M., Dembélé, F., Lloyd, C., Hanan, N. P., Damesin, C., Delon, C., Serça, D., Galy-Lacaux, C., Seghiéri, J., Becerra, S., Dia, H., Gangneron, F., and Mazzega, P.: The AMMA-CATCH Gourma observatory site in Mali: Relating climatic variations to changes in vegetation, surface hydrology, fluxes and natural resources, *J. Hydrol., AMMA-CATCH Special issue*, 375, 14–33, 2009. 1160, 1161
- Mougin, E., Demarez, V., Hiernaux, P., Diawara, M., and Berg, A.: Estimation of LAI, fCover and fAPAR of Sahel rangelands (Gourma, Mali), *Agr. Forest Meteorol.*, 198–199, 155–167, 2014. 1161, 1171
- Oswald, R., Behrendt, T., Ermel, M., Wu, D., Su, H., Cheng, Y., Breuninger, C., Moravek, A., Mougin, E., Delon, C., Loubet, B., Pommerening-Roser, A., Sorgel, M., Poschl, U., Hoffmann, T., Andreae, M. O., Meixner, F. X., and Trebs, I.: HONO emissions from soil bacteria as a major source of atmospheric reactive nitrogen, *Science*, 341, 1233 doi:10.1126/science.1242266, 2013.
- Otter, L. B., Yang, W. X., Scholes, M. C., and Meixner, F. X.: Nitric oxide emissions from a southern african savanna, *J. Geophys. Res.*, 104, 18471–18485, 1999. 1194
- Pape, L., Ammann, C., Nyfeler-Brunner, A., Spirig, C., Hens, K., and Meixner, F. X.: An automated dynamic chamber system for surface exchange measurement of non-reactive and

Biogenic NO emissions from soils in a Sahelian rangeland

C. Delon et al.

Title Page

Abstract

Introduction

Conclusions

References

Tables

Figures

◀

▶

◀

▶

Back

Close

Full Screen / Esc

Printer-friendly Version

Interactive Discussion



reactive trace gases of grassland ecosystems, *Biogeosciences*, 6, 405–429, doi:10.5194/bg-6-405-2009, 2009. 1164

Parton, W. J.: Predicting soil temperatures in a shortgrass steppe, *Soil Sci.*, 138, 93–101, 1984. 1167

5 Parton, W. J., Holland, E. A., Del Grosso, S. J., Hartman, M. D., Martin, R. E., Mosier, A. R., Ojima, D. S., and Schimel, D. S.: Generalized model for NO_x and N₂O emissions from soils, *J. Geophys. Res.*, 106, 17403–17419, 2001. 1157

Pierre, C., Bergametti, G., Marticorena, B., Mougin, E., Lebel, T., and Ali, A.: Pluriannual comparisons of satellite-based rainfall products over the Sahelian belt for seasonal vegetation modeling, *J. Geophys. Res.*, 116, D18201, doi:10.1029/2011JD016115, 2011. 1182

Pierre, C., Bergametti, G., Marticorena, B., Mougin, E., Bouet, C., and Schmechtig, C.: Impact of vegetation and soil moisture seasonal dynamics on dust emissions over the Sahelian belt in West Africa, *J. Geophys. Res.*, 117, D06114, doi:10.1029/2011JD01695, 2012. 1166, 1182

15 Potter, C. S., Matson, P. A., Vitousek, P. M., and Davidson, E. A.: Process modelin of controls on nitrogen trace gas emissions from soils worldwide, *J. Geophys. Res.*, 101, 1361–1377, 1996. 1164, 1171

Schindlbacher, A., Zechmeister-Boltenstern, S., and Butterbach-Bahl, K.: Effects of soil moisture and temperature on NO, NO₂ and N₂O emissions from European forest soils, *J. Geophys. Res.*, 109, D17302, doi:10.1029/2004JD004590, 2004. 1157, 1163

20 Scholes, M. C., Martin, R., Scholes, R. J., Parsons, D., and Winstead, E.: NO and N₂O emissions from savanna soils following the first simulated rains of the season, *Nutr. Cycl. Agroecosys.*, 48, 115–122, 1997. 1162, 1172

25 Schwinning, S., Sala, O. E., Loik, M. E., and Ehleringer, J. R.: Thresholds, memory, and seasonality: understanding pulse dynamics in arid.semi-arid ecosystems, *Oecologia*, 141, 191–193, 2004. 1158

Serça, D., Delmas, R., Jambert, C., and Labroue, L.: Emissions of nitrogen oxides from equatorial rain forest in central Africa: origin and regulation of NO emission from soils, *Tellus B*, 46, 143–254, 1994. 1162, 1163, 1180

30 Serça D., Delmas, R., Le Roux, X., Parsons, D. A. B., Scholes, M. C., Abbadie, L., Lensi, R., Ronce, O., and Labroue, L.: Comparison of nitrogen monoxide emissions from several

Biogenic NO emissions from soils in a Sahelian rangeland

C. Delon et al.

Title Page

Abstract

Introduction

Conclusions

References

Tables

Figures

⏪

⏩

◀

▶

Back

Close

Full Screen / Esc

Printer-friendly Version

Interactive Discussion



African tropical ecosystems and influence of season and fire, *Global Biogeochem. Cy.*, 12, 637–651, 1998. 1162

Skopp, J., Jawson, M. D., and Doran, J. W.: Steady state aerobic microbial activity as a function of soil water content, *Soil Sci. Soc. Am. J.*, 54, 1619–1625, 1990. 1172

5 Steinkamp, J. and Lawrence, M. G.: Improvement and evaluation of simulated global biogenic soil NO emissions in an AC-GCM, *Atmos. Chem. Phys.*, 11, 6063–6082, doi:10.5194/acp-11-6063-2011, 2011. 1158

Sullivan, L. J.: Environmental variables controlling nitric oxide emissions from agricultural soils in the southeast united states, *Atmos. Environ.*, 30, 3573–3582, 1996. 1180

10 Tracol, Y., Mougou, E., Hiernaux, P., and Jarlan, L.: Testing a Sahelian grassland functioning model against herbage mass measurements, *Ecol. Model.*, 193, 437–446, 2006. 1166, 1168, 1175

Van Dijk, S. and Meixner, F. X.: Production and consumption of NO in forest and pasture soils from the Amazon Basin: a laboratory study, *Water Air Soil Poll.*, 1, 119–130, 2001. 1180

15 Williams, E. J., Guenther, A., and Fehsenfeld, F. C.: An inventory of nitric oxide emissions from soils in the United States, *J. Geophys. Res.*, 97, 7511–7519, 1992. 1173

Yan, X., Ohara, T., and Akimoto, H.: Statistical modelling of global soil NO_x emissions, *Global Biogeochem. Cy.*, 19, GB3019, doi:10.1029/2004GB002276, 2005. 1158, 1173, 1180

20 Yao, Z., Wu, X., Wolf, B., Dannenmann, M., Butterbach-Bahl, K., Brüggemann, N., Chen, W., and Zheng, X.: Soil atmosphere exchange potential of NO and N₂O in different land use types of Inner Mongolia as affected by soil temperature, soil moisture, freeze-thaw, and drying-wetting events, *J. Geophys. Res.*, 115, D17116, doi:10.1029/2009JD013528, 2010. 1174

Yienger, J. J. and Levy II, H.: Empirical model of global soil biogenic NO_x emissions, *J. Geophys. Res.*, 100, 11447–11464, 1995. 1158, 1159, 1160, 1173

Table 1. Inputs for the models used.

STEP	Inputs	Unit	Value
Initial parameters	Conversion efficiency	g(d.m.)MJ ⁻¹	4
	Initial green biomass	g(d.m.)m ⁻²	0.8
	% C3	%	29.3
	Initial Specific Leaf Area	cm ² g ⁻¹	180
Meteorology	Precipitations	mm	Daily variation
	Global radiation	MJm ⁻²	Daily variation
	Min and max air temperature	°C	Daily variation
	Pressure	hPa	Daily variation
	Wind speed	ms ⁻¹	Daily variation
Soil	Thicknesses (4 layers)	cm	2;28;70;200
	Initial water stock (4)	mm	0.1;1.5;7.3;38
	Clay content (4)		4.5;5.5;5.2;5.5
	Sand content (4)		91.2;91.3;91;92.3
	pH (4)		6.7;6.7;6.7;6.7
Annual vegetation	Initial dry biomass and litter	g(d.m.)m ⁻²	10;30
	Root fraction (3)		0.75;0.2;0.05
	% dycotiledone	%	29.5
	Max tree biomass (year before and current year)	kgha ⁻¹	600;400
Animals	Animal categories (bovine, caprine, ovine, asine, cameline, equine)	%	Monthly variation Ex for Jan: 0.826;0.091;0.055;0.024;0.001;0
	Animal stock (12 months)	Head number	2893;5288;15 626;22 537 13 874;7832;1191;408 3168;2835;2510;3348
	Grazing area	ha	5000
GENDEC	Inputs	Unit	Value
	Soil temperature	°C	From STEP
	Matrix potential	bars	From STEP
	Microbial assimilation efficiency		0.6
	Carbon pool	gC	From STEP
	Microbial death rate		0.2
	N/C (6: labile compounds, holocellulose, resistant compounds, dead and living microbial biomass, nitrogen pool)		10;1000;34;8;25;9
NOFlux	Inputs	Unit	Value
	surface WFPS	%	From STEP soil moisture
	surface soil temperature	°C	From STEP
	Deep soil temperature	°C	From STEP
	Wind speed	ms ⁻¹	From meteorological forcing
	pH		6.7
	Sand content		91.2
	Mineral nitrogen	g(N)m ⁻²	From GENDEC

Biogenic NO emissions from soils in a Sahelian rangeland

C. Delon et al.

[Title Page](#)

[Abstract](#) [Introduction](#)

[Conclusions](#) [References](#)

[Tables](#) [Figures](#)

[⏪](#) [⏩](#)

[◀](#) [▶](#)

[Back](#) [Close](#)

[Full Screen / Esc](#)

[Printer-friendly Version](#)

[Interactive Discussion](#)



Biogenic NO emissions from soils in a Sahelian rangeland

C. Delon et al.

Title Page

Abstract

Introduction

Conclusions

References

Tables

Figures

◀

▶

◀

▶

Back

Close

Full Screen / Esc

Printer-friendly Version

Interactive Discussion



Table 2. Weights and normalisation factors for the calculation of NO flux.

w_0	0.561651794427011	w_{14}	1.61126351888328	c_1	-2.453992
w_1	-0.48932473825312	w_{15}	0.134088164903734	c_2	0.142680
w_2	-0.53521035872982	w_{16}	-0.21261983875851	c_3	-4.609693
w_3	0.506600069632212	w_{17}	0.901773966331639	c_4	0.115964
w_4	-0.784867014304196	w_{18}	-1.18779902340853	c_5	-2.717366
w_5	0.283241716518431	w_{19}	1.23132977162784	c_6	0.163039
w_6	0.132539461337082	w_{20}	-2.62451302093078	c_7	-0.364632
w_7	-0.008396615495977	w_{21}	-0.27778477919531	c_8	5.577532
w_8	-1.62075908632141	w_{22}	0.413060247967231	c_9	-1.535199
w_9	0.638173941854311	w_{23}	-0.56046255255612	c_{10}	0.054909
w_{10}	3.88469485689393	w_{24}	0.499562769416134	c_{11}	-25.554238
w_{11}	-0.942985468044301	w_{25}	-1.23876483956298	c_{12}	3.158129
w_{12}	-0.862455616914003	w_{26}	-1.41295235373665	c_{13}	-1.182905
w_{13}	-2.68040193699105	w_{27}	-1.20659105237301	c_{14}	0.614317
				c_{15}	3.903007
				c_{16}	9.205080

Biogenic NO emissions from soils in a Sahelian rangeland

C. Delon et al.

[Title Page](#)

[Abstract](#)

[Introduction](#)

[Conclusions](#)

[References](#)

[Tables](#)

[Figures](#)

[⏪](#)

[⏩](#)

[◀](#)

[▶](#)

[Back](#)

[Close](#)

[Full Screen / Esc](#)

[Printer-friendly Version](#)

[Interactive Discussion](#)

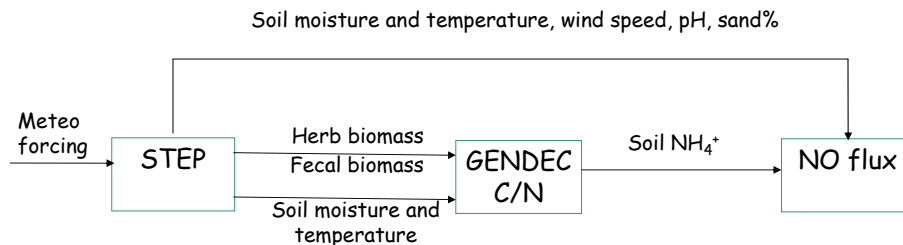


Table 3. Comparison of experimental and simulated NO fluxes (daily scale) during various wet seasons in dry savanna sites. The model used are indicated in parenthesis. No model specified means experimental data.

Site name	NO flux (kg(N) ha ⁻¹ yr ⁻¹)	Period	Reference
Banizoumbou	1.92 ± 0.83	Wet season 1992	Le Roux et al. (1995)
Agoufou	2.11 ± 0.77	Wet season 2004	Delon et al. (2007)
Agoufou	0.72 ± 0.25	Wet season 2005	Unpublished
South Africa	1.7–2.5	Wet season 1993	Otter et al. (1999)
Chihuahuan desert	0.76	Watered soils 1993	Hartley and Schlesinger (2000)
Agoufou (STEP)	1.06 ± 1.00	Wet season 2004	This work
Agoufou (STEP)	1.54 ± 1.35	Wet season 2005	This work
Agoufou (STEP)	1.56 ± 1.52	Wet season 2006	This work
Agoufou (STEP)	1.55 ± 1.43	Wet season 2007	This work
Agoufou (STEP)	1.73 ± 1.65	Wet season 2008	This work
Agoufou (ISBA)	2.52 ± 1.14	Wet season 2006	Delon et al. (2010)
Agoufou (STEP)	0.66 ± 0.65	Year 2004	This work
Agoufou (STEP)	0.86 ± 0.92	Year 2005	This work
Agoufou (STEP)	0.86 ± 1.02	Year 2006	This work
Agoufou (STEP)	0.85 ± 0.97	Year 2007	This work
Agoufou (STEP)	0.96 ± 1.13	Year 2008	This work

**Biogenic NO
emissions from soils
in a Sahelian
rangeland**

C. Delon et al.



*Schematic representation of NO flux modeling
coupled to STEP-GENDEC*

Figure 1. Schematic view of links between the models STEP, GENDEC and NO emission model.

[Title Page](#)[Abstract](#)[Introduction](#)[Conclusions](#)[References](#)[Tables](#)[Figures](#)[Back](#)[Close](#)[Full Screen / Esc](#)[Printer-friendly Version](#)[Interactive Discussion](#)

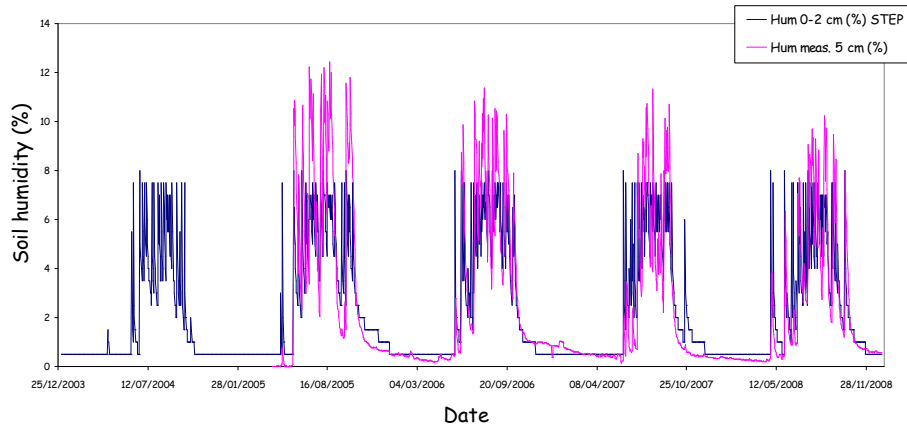


Figure 2. Soil moisture calculated by STEP at the surface layer (0–2 cm) in blue, mean soil moisture measured at 5 cm in pink, for years 2004 to 2008 at Agoufou.

Biogenic NO emissions from soils in a Sahelian rangeland

C. Delon et al.

[Title Page](#)

[Abstract](#) [Introduction](#)

[Conclusions](#) [References](#)

[Tables](#) [Figures](#)

[◀](#) [▶](#)

[◀](#) [▶](#)

[Back](#) [Close](#)

[Full Screen / Esc](#)

[Printer-friendly Version](#)

[Interactive Discussion](#)



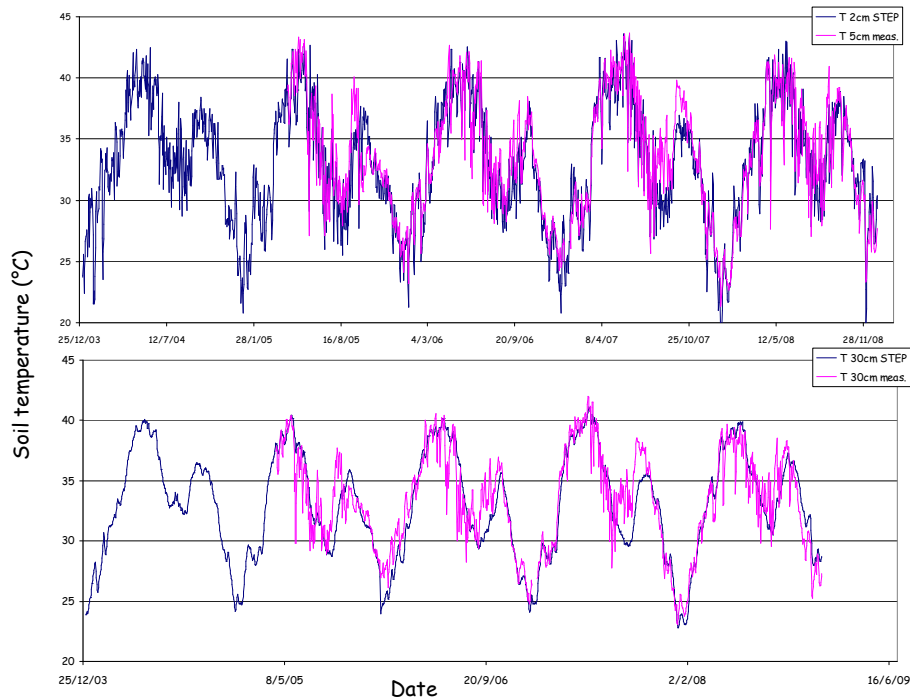


Figure 3. (a) Soil temperature measured at 5 cm at the low slope station (in pink), soil temperature simulated at the surface layer in blue; **(b)** soil temperature measured at 30 cm at the low slope station (in pink), soil temperature simulated at the second layer (2–30 cm) in blue, for years 2004 to 2008 at Agoufou.

Biogenic NO emissions from soils in a Sahelian rangeland

C. Delon et al.

[Title Page](#)

Abstract	Introduction
Conclusions	References
Tables	Figures

◀
▶

◀
▶

Back	Close
----------------------	-----------------------

[Full Screen / Esc](#)

[Printer-friendly Version](#)

[Interactive Discussion](#)



Biogenic NO emissions from soils in a Sahelian rangeland

C. Delon et al.

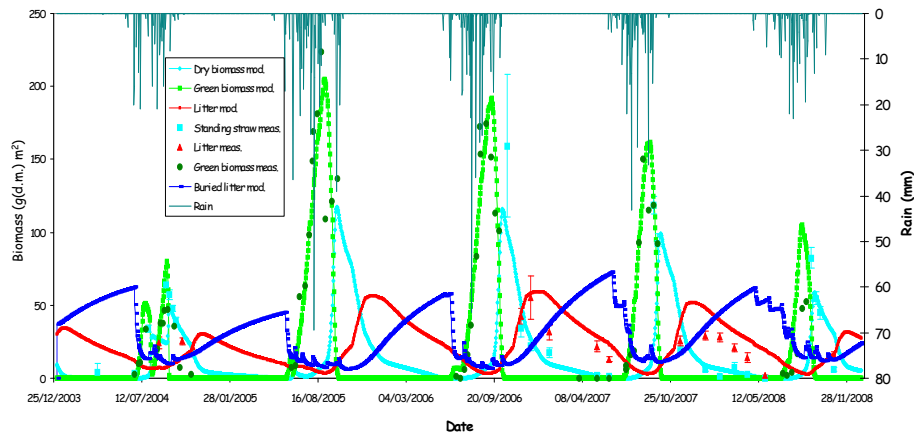


Figure 4. Green biomass in green, dry biomass in light blue, surface litter in red, buried litter in dark blue (line for the model, dots for measurements), in g(d.m.) m^{-2} . SDs are indicated for the measurements. Rain in blue-grey in mm, for years 2004 to 2008 at Agoufou.

Title Page

Abstract

Introduction

Conclusions

References

Tables

Figures

⏪

⏩

◀

▶

Back

Close

Full Screen / Esc

Printer-friendly Version

Interactive Discussion



Biogenic NO emissions from soils in a Sahelian rangeland

C. Delon et al.

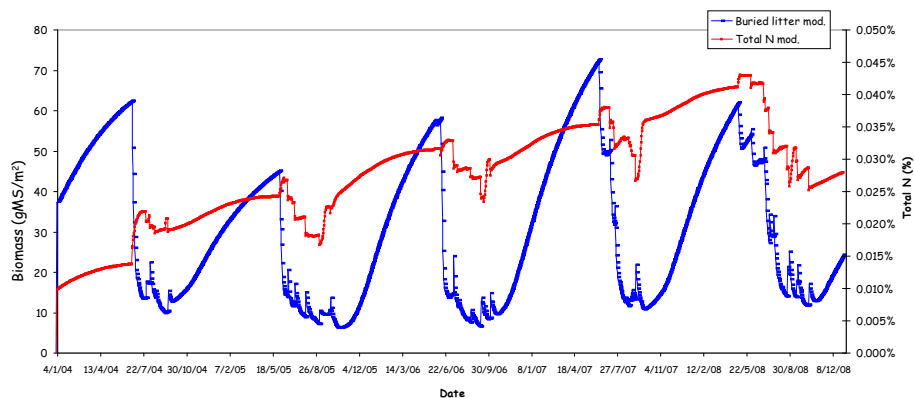


Figure 5. Simulated buried litter in g(d.m.)m^{-2} in dark blue and total N content in the soil in %, for years 2004 to 2008 at Agoufou.

Title Page

Abstract

Introduction

Conclusions

References

Tables

Figures



Back

Close

Full Screen / Esc

Printer-friendly Version

Interactive Discussion



Biogenic NO emissions from soils in a Sahelian rangeland

C. Delon et al.

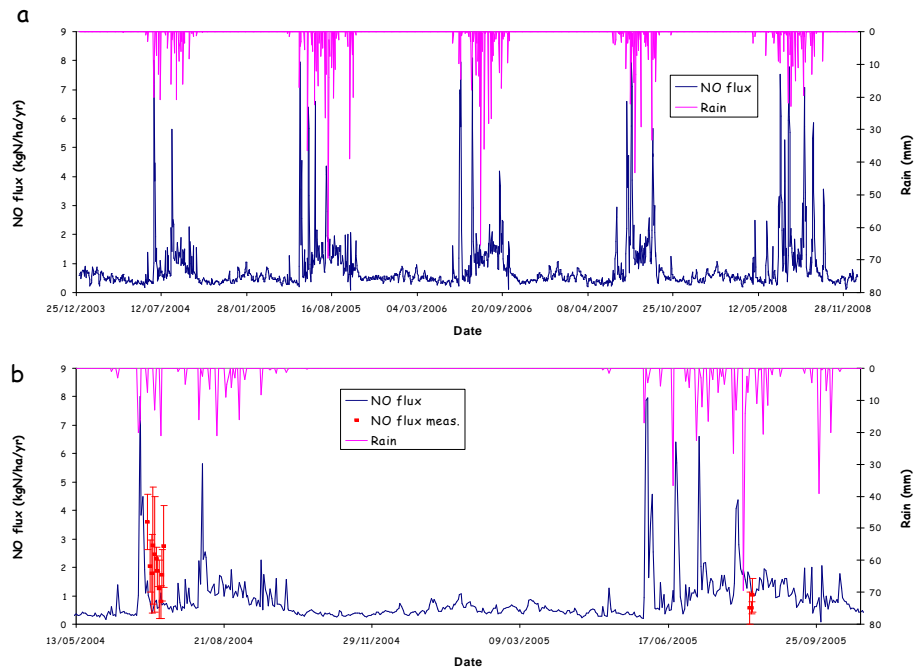


Figure 6. Simulated NO flux in $\text{kg(N)ha}^{-1}\text{yr}^{-1}$ and rain in mm, for years 2004 to 2008 at Agoufou.

[Title Page](#)
[Abstract](#)
[Introduction](#)
[Conclusions](#)
[References](#)
[Tables](#)
[Figures](#)
[⏪](#)
[⏩](#)
[◀](#)
[▶](#)
[Back](#)
[Close](#)
[Full Screen / Esc](#)
[Printer-friendly Version](#)
[Interactive Discussion](#)


**Biogenic NO
emissions from soils
in a Sahelian
rangeland**

C. Delon et al.

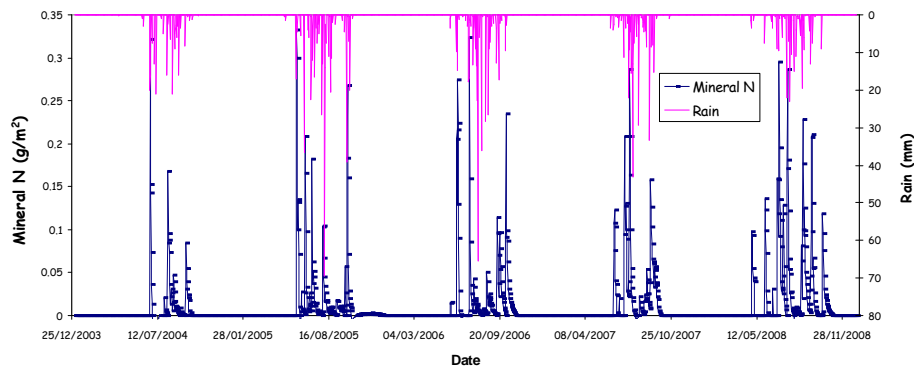


Figure 7. Simulated mineral N in g m^{-2} and rain in mm for years 2004 to 2008 at Agoufou.

[Title Page](#)[Abstract](#)[Introduction](#)[Conclusions](#)[References](#)[Tables](#)[Figures](#)[Back](#)[Close](#)[Full Screen / Esc](#)[Printer-friendly Version](#)[Interactive Discussion](#)

Biogenic NO emissions from soils in a Sahelian rangeland

C. Delon et al.

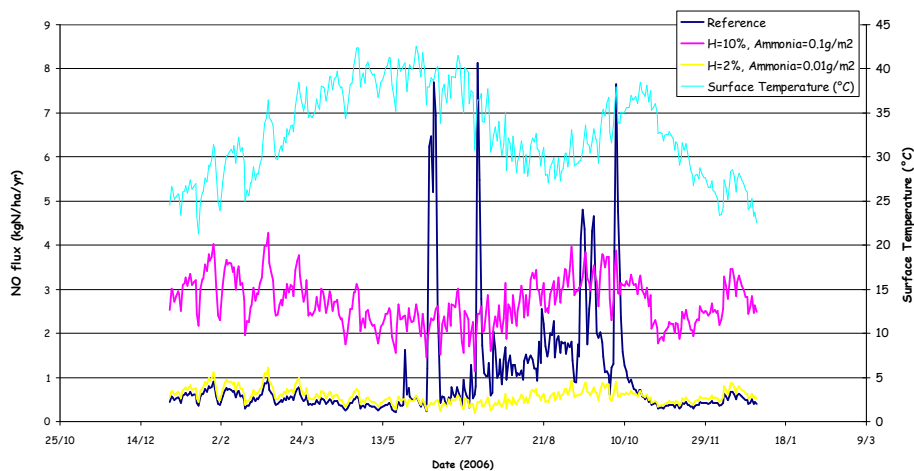


Figure 8. Sensitivity test. In dark blue: reference NO flux in $\text{kg(N) ha}^{-1} \text{ yr}^{-1}$, in yellow: NO flux with $H = 2\%$ and mineral $N = 0.01 \text{ g m}^{-2}$, in pink: NO flux with $H = 10\%$ and mineral $N = 0.1 \text{ g m}^{-2}$, in light blue: surface temperature in $^{\circ}\text{C}$, for year 2006.

Title Page

Abstract

Introduction

Conclusions

References

Tables

Figures



Back

Close

Full Screen / Esc

Printer-friendly Version

Interactive Discussion



Biogenic NO emissions from soils in a Sahelian rangeland

C. Delon et al.

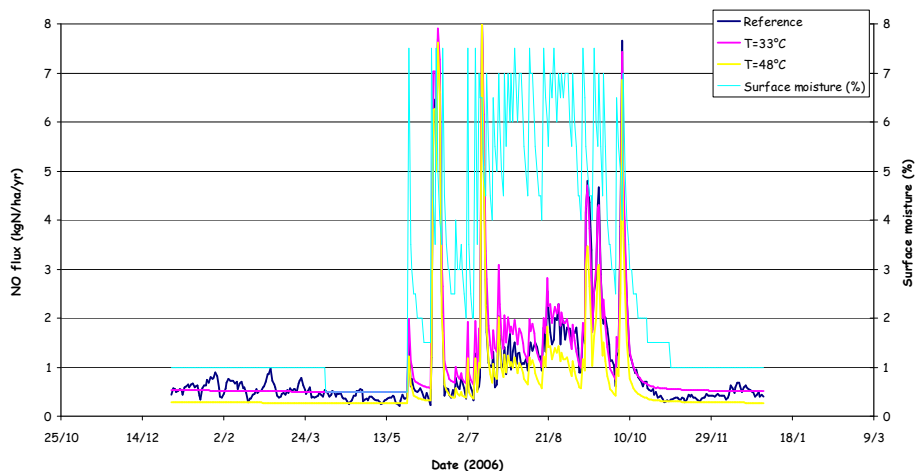


Figure 9. Sensitivity test. In dark blue: reference NO flux in $\text{kg(N) ha}^{-1} \text{ yr}^{-1}$, in yellow: NO flux with $T = 48^\circ\text{C}$, in pink: NO flux with $T = 33^\circ\text{C}$, in light blue: surface moisture in %, for year 2006.

[Title Page](#)[Abstract](#)[Introduction](#)[Conclusions](#)[References](#)[Tables](#)[Figures](#)[⏪](#)[⏩](#)[◀](#)[▶](#)[Back](#)[Close](#)[Full Screen / Esc](#)[Printer-friendly Version](#)[Interactive Discussion](#)