

Supplement of Biogeosciences Discuss., 12, 12091–12119, 2015  
<http://www.biogeosciences-discuss.net/12/12091/2015/>  
doi:10.5194/bgd-12-12091-2015-supplement  
© Author(s) 2015. CC Attribution 3.0 License.



*Supplement of*

## **Metagenomic analyses of the late Pleistocene permafrost – additional tools for reconstruction of environmental conditions**

**E. Rivkina et al.**

*Correspondence to:* E. Rivkina ([elizaveta.rivkina@gmail.com](mailto:elizaveta.rivkina@gmail.com))

The copyright of individual parts of the supplement might differ from the CC-BY 3.0 licence.

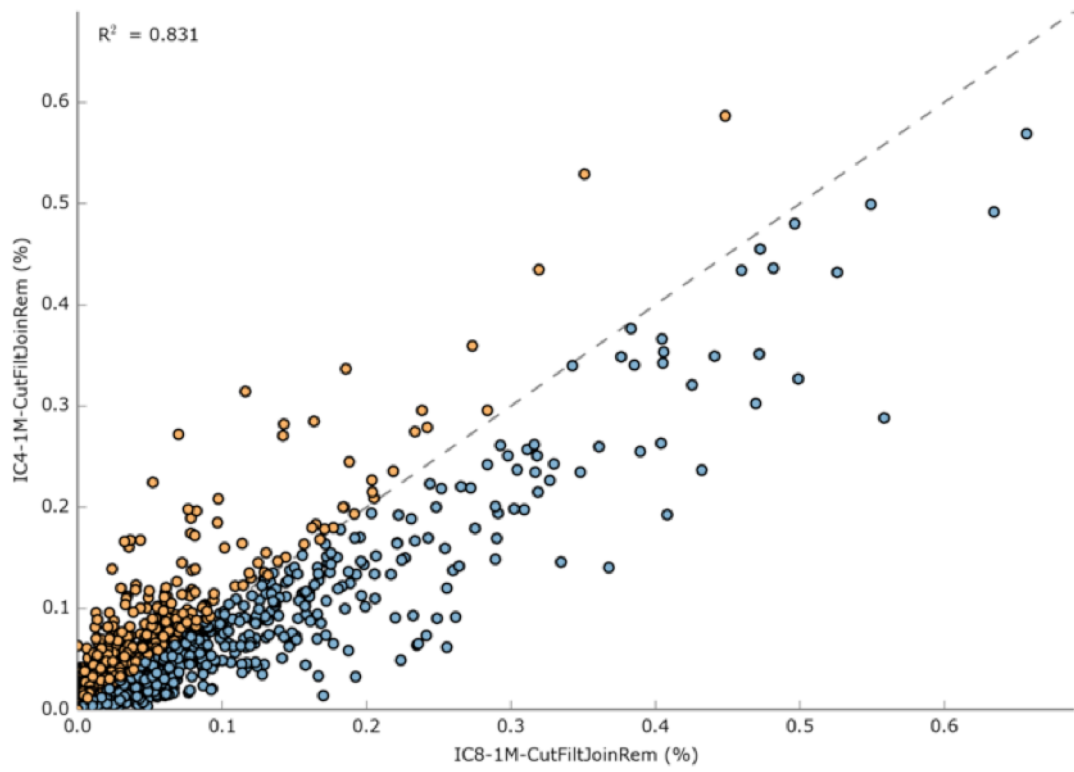


Figure S1. Profile scatter plot indicating the similarity of the metagenomes based on the SEED functional annotation.