



## *Supplement of*

# **Do land surface models need to include differential plant species responses to drought? Examining model predictions across a latitudinal gradient in Europe**

**M. G. De Kauwe et al.**

*Correspondence to:* M. G. De Kauwe ([mdekauwe@gmail.com](mailto:mdekauwe@gmail.com))

The copyright of individual parts of the supplement might differ from the CC-BY 3.0 licence.

Figure S1

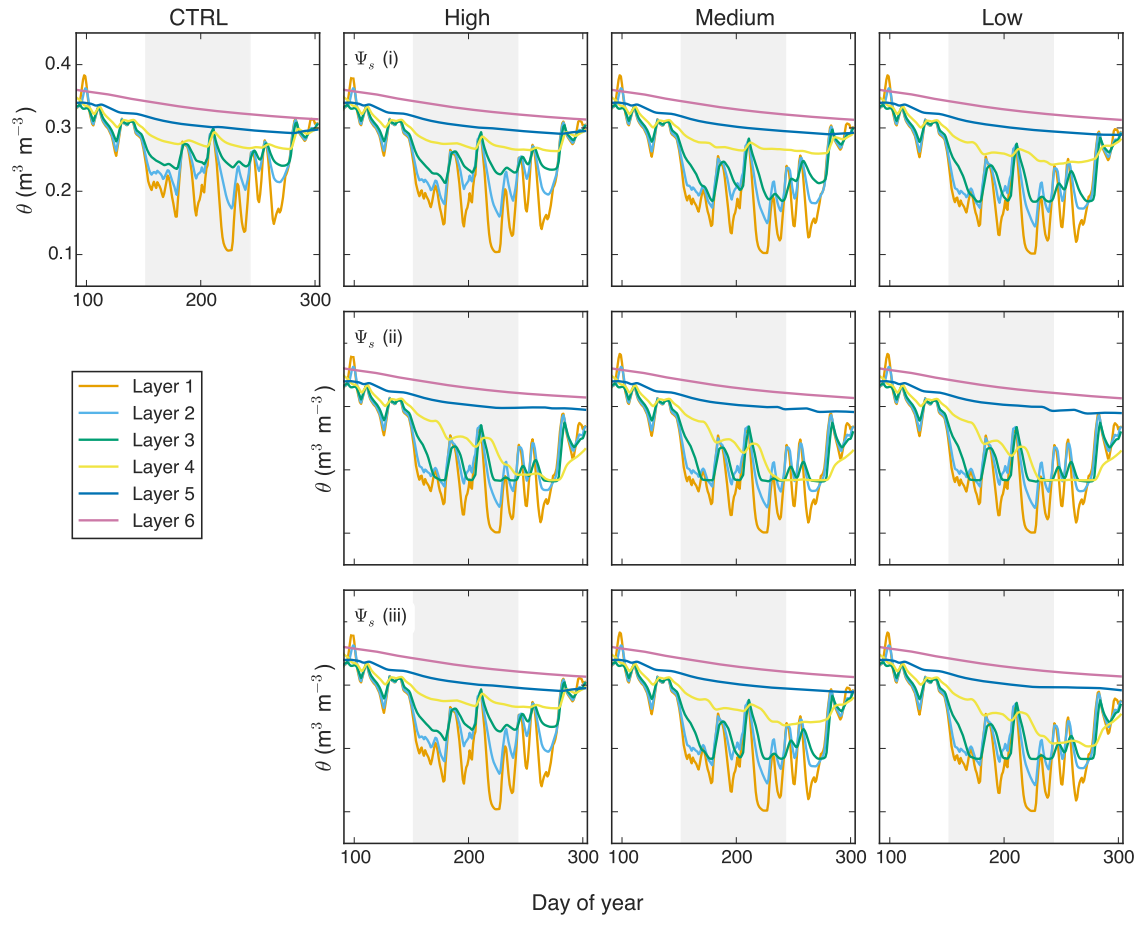


Figure S2

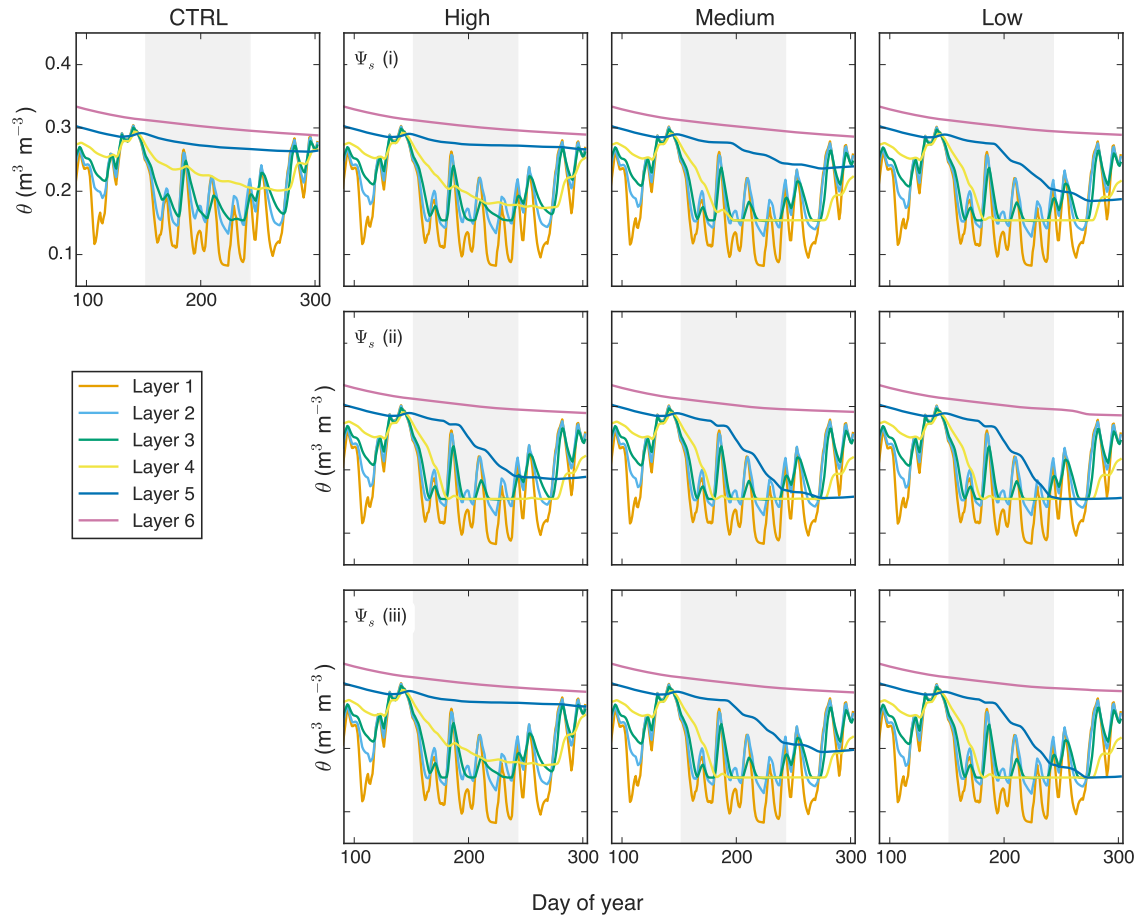


Figure S3

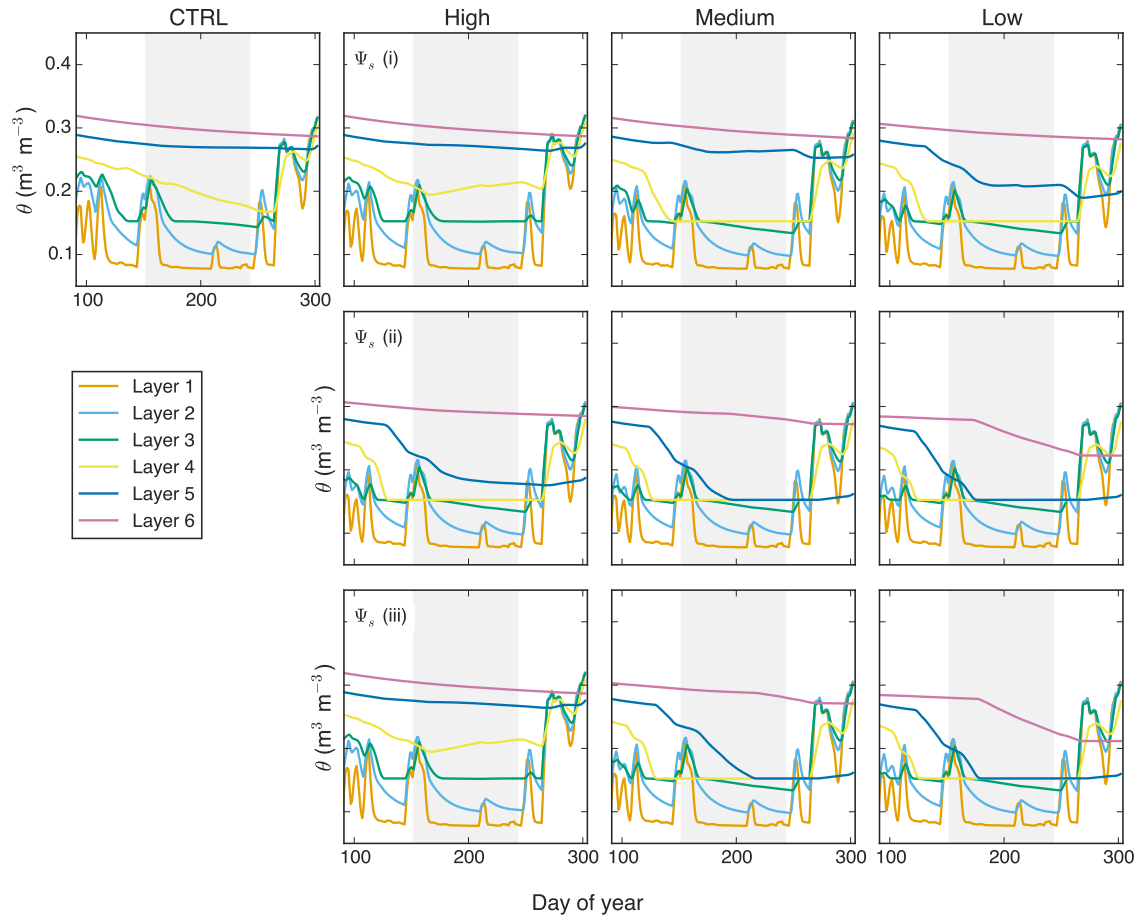


Figure S4

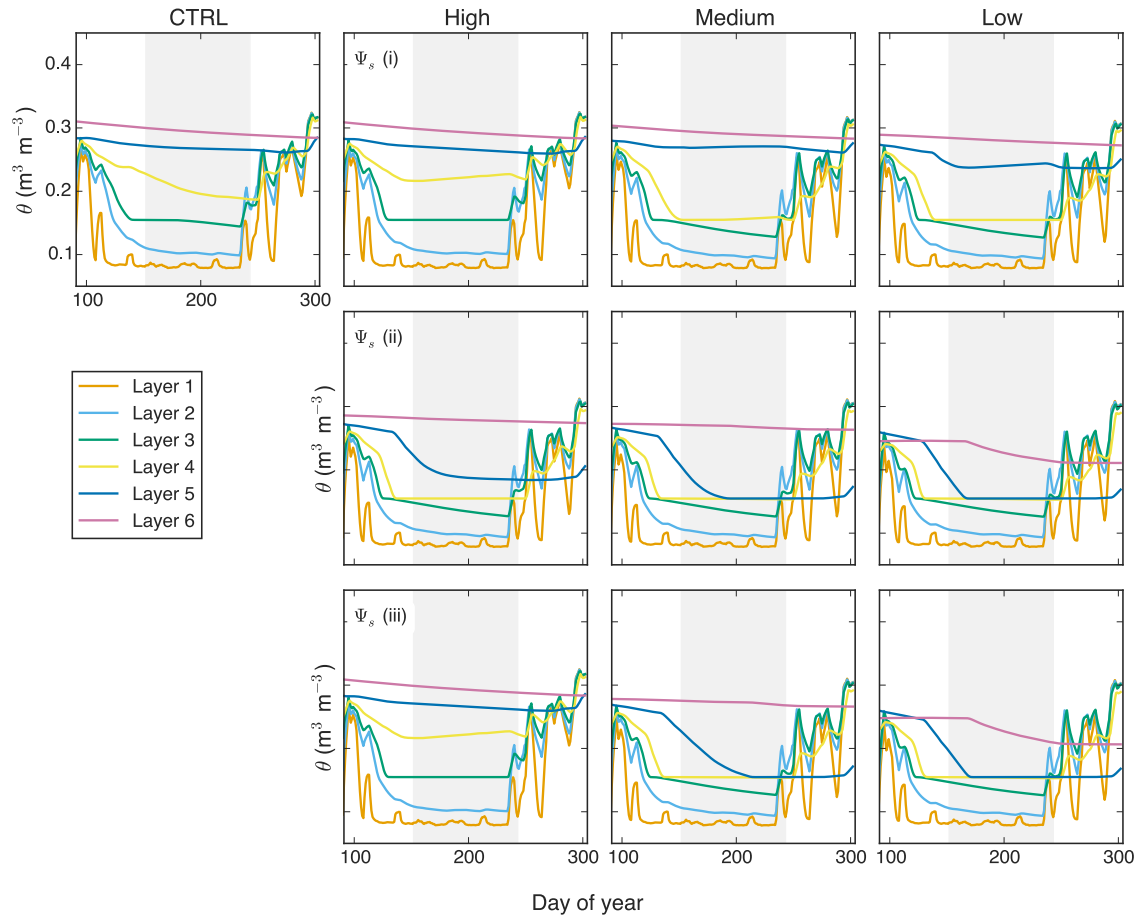


Figure S5

