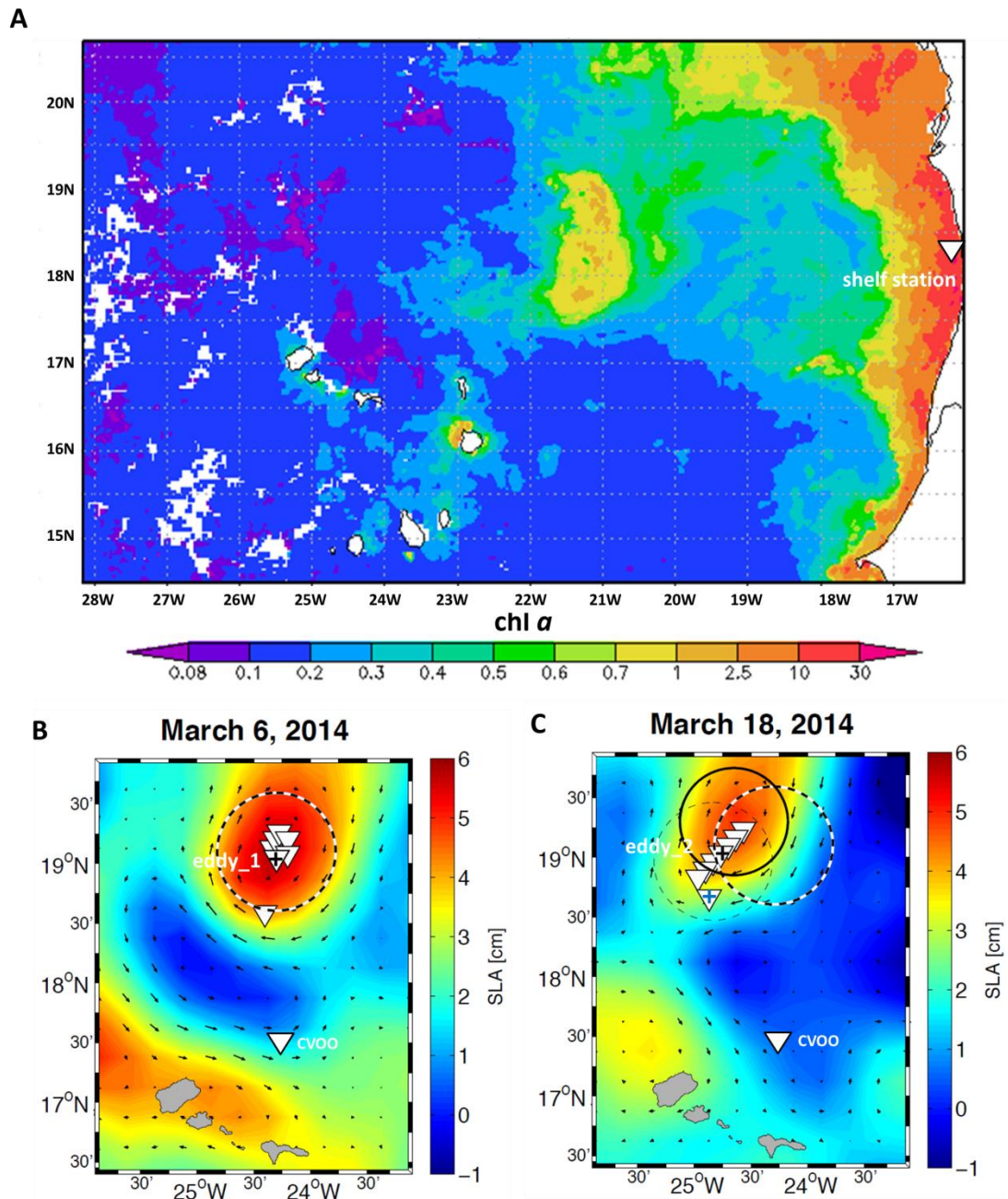


Dear editor,

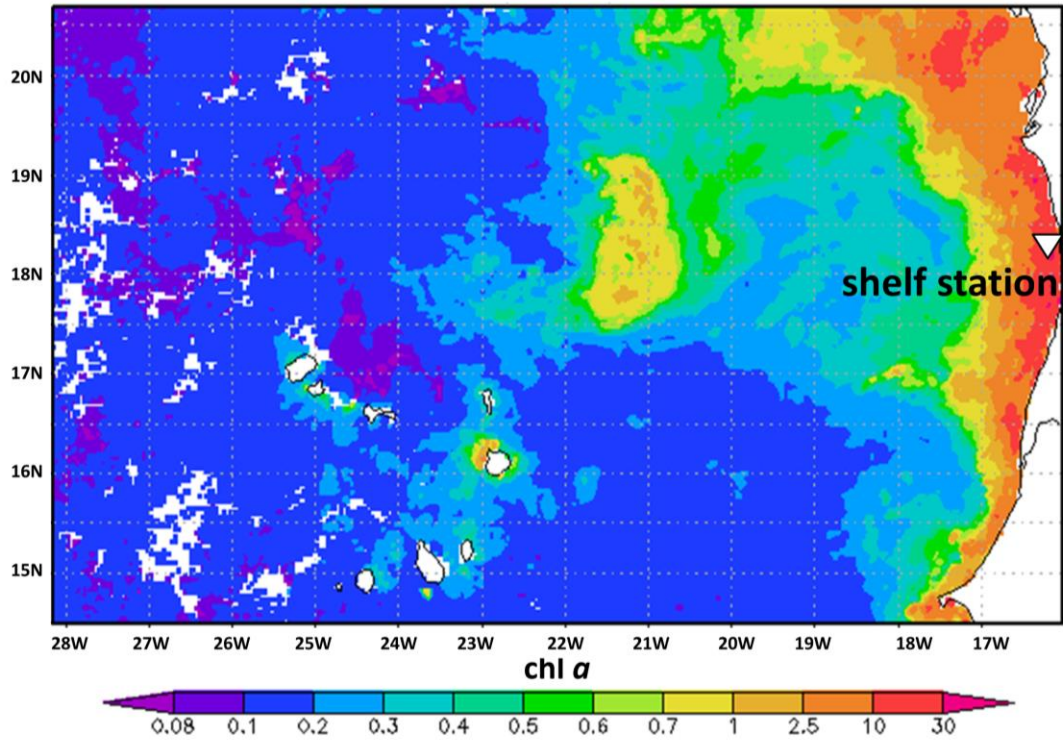
Thanks for editing this manuscript; your input is highly appreciated!

The technical corrections that were required were addressed as follows:

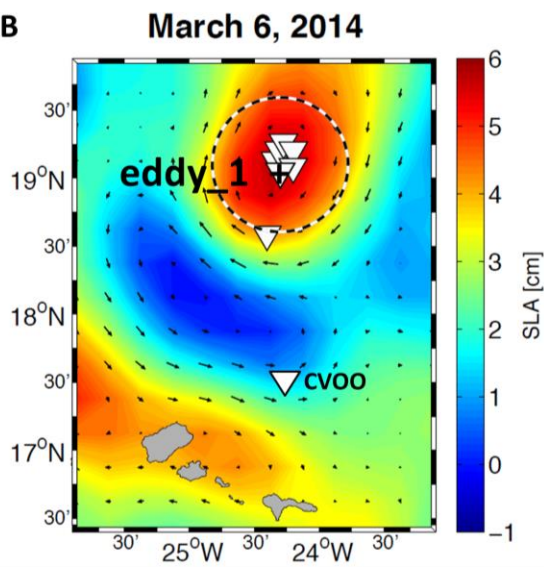
- Figure 1: The dark letters in the graphs are hard to read. I suggest to make them white. We tried that but it didn't improve the figure (see below). Therefore, we increased the font size in order to increase the readability.



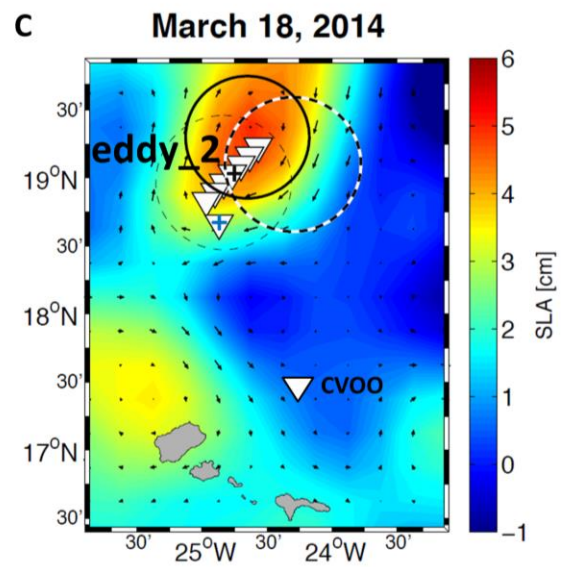
A



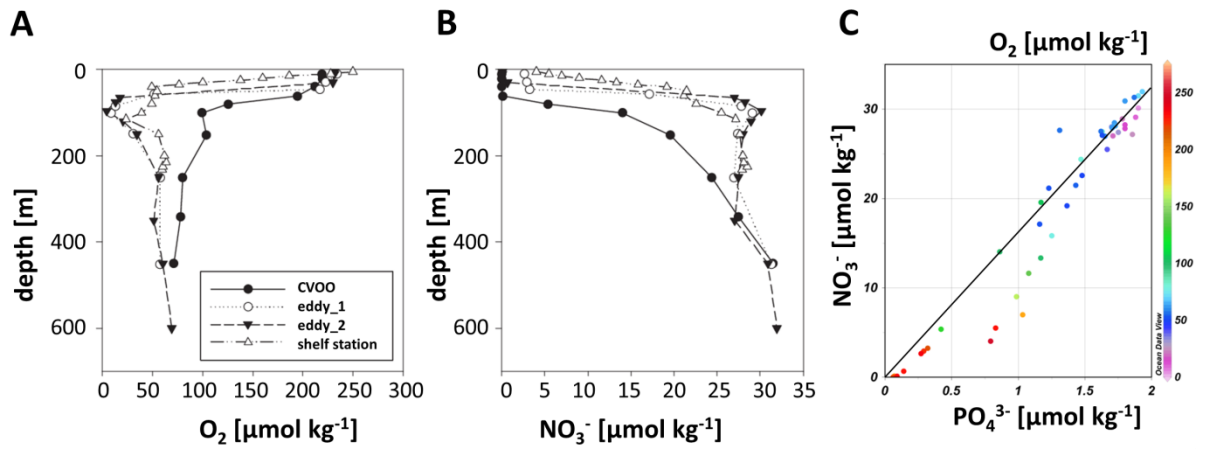
B



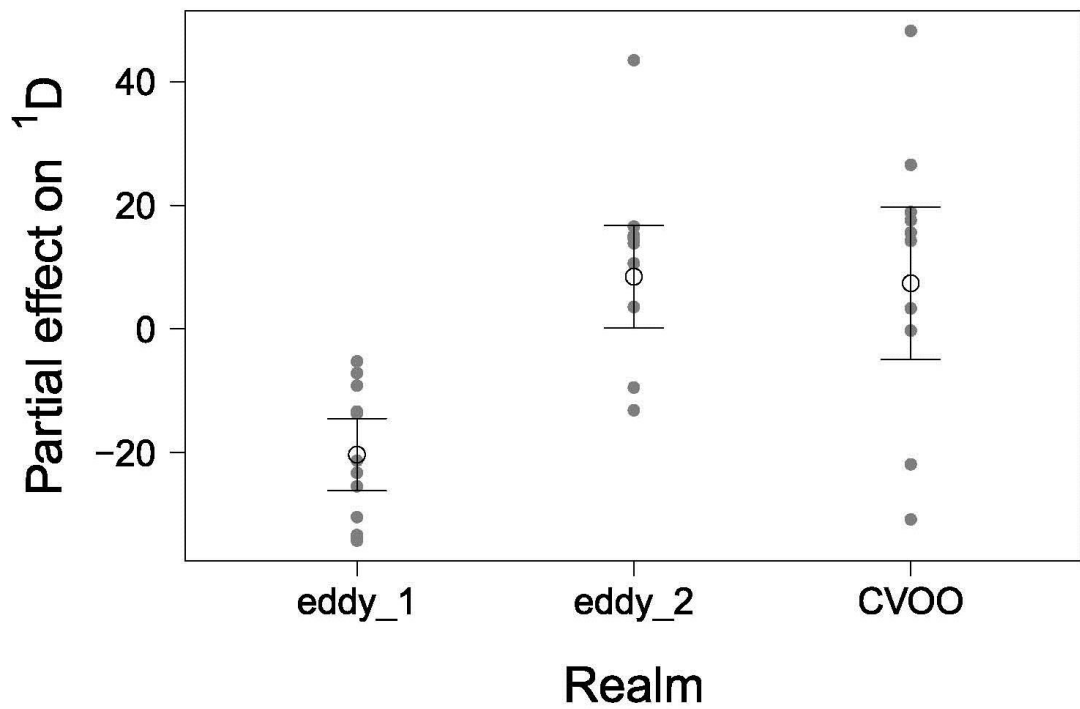
C



- Figure 3: Please remove the grey frame around the figures. The frame has been removed.



- Figure 6: The grey dots are very weak. Is it possible to give them a darker color? The dots are a bit darker, now.



- Figure 7: Please remove the grey frame around figures. The bars are very thin and a little difficult to distinguish. Is there a better way to display them (thicker?) or maybe just enlarge the figure? Frame has been removed. We tried to increase the quality of the figure by displaying the bars in red with a stronger frame.

