

# 1 Seasonal distribution of short-tailed shearwaters and their 2 prey in the Bering and Chukchi Seas

3  
4 **B. Nishizawa<sup>1, \*</sup>, K. Matsuno<sup>1,2</sup>, E.A. Labunski<sup>3</sup>, K.J. Kuletz<sup>3</sup>, A. Yamaguchi<sup>1</sup>, Y.  
5 Watanuki<sup>1</sup>**

6 [1]{Graduate School of Fisheries Sciences, Hokkaido University, 3-1-1 Minato-cho,  
7 Hakodate, Hokkaido, 041-8611, Japan}

8 [2]{National Institute of Polar Research, 10-3 Midori-cho, Tachikawa, Tokyo 190-8518,  
9 Japan}

10 [3]{US Fish and Wildlife Service, 1011 E. Tudor Road, Anchorage, AK 99503, USA}

11 [\*]Correspondence to: B. Nishizawa ([nishizawa@salmon.fish.hokudai.ac.jp](mailto:nishizawa@salmon.fish.hokudai.ac.jp))

## 13 **Abstract**

14 The short-tailed shearwater (*Ardenna tenuirostris*) is one of the abundant marine top predators  
15 in the Pacific; this seabird spends its non-breeding period in the northern North Pacific during  
16 May–October and many visit the southern Chukchi Sea in August–September. We examined  
17 potential factors affecting this seasonal pattern of distribution by counting short-tailed  
18 shearwaters from boats. Their main prey, krill, was sampled by net tows in the southeastern  
19 Bering Sea/Aleutian Islands and in the Bering Strait/southern Chukchi Sea. Short-tailed  
20 shearwaters were mainly distributed in the southeastern Bering Sea/Aleutian Islands ( $60 \pm$   
21  $473$  birds  $\text{km}^{-2}$ ) in July 2013, and in the Bering Strait/southern Chukchi Sea ( $19 \pm 91$  birds  
22  $\text{km}^{-2}$ ) in September 2012. In the Bering Strait/southern Chukchi Sea krill size was greater in  
23 September 2012 ( $9.6 \pm 5.0$  mm in total length) than in July 2013 ( $1.9 \pm 1.2$  mm). Within the  
24 Bering Strait/southern Chukchi Sea in September 2012, short-tailed shearwaters occurred  
25 more frequently in cells ( $50 \times 50$  km) where large size of krill were more abundant. These  
26 findings, and information previously collected in other studies, suggest that the seasonal  
27 northward movement of short-tailed shearwaters might be associated with the seasonal  
28 increase in krill size in the Bering Strait/southern Chukchi Sea. We could not, however, rule  
29 out the possibility that large interannual variation in krill abundance might influence the

1 seasonal distribution of shearwaters. This study highlights the importance of krill, which is  
2 advected from the Pacific, as an important prey of top predators in the Arctic marine  
3 ecosystem.

4

## 5 **1 Introduction**

6 The shelf region in the Bering and Chukchi seas harbors one of the most productive marine  
7 ecosystems in the world (Grebmeier et al., 2006; Hunt et al., 2013). These areas are also  
8 among the regions where recent reductions of sea-ice coverage have been particularly  
9 significant (e.g., Perovich and Richter-Menge, 2009). Changes in the timing of sea-ice  
10 formation and retreat, along with increasing seawater temperatures and freshwater content,  
11 determine the timing, intensity, and locations of phytoplankton bloom, and hence affect the  
12 distribution and abundance of primary and secondary consumers (Mueter and Litzow, 2008;  
13 Steel et al., 2008; Li et al., 2009; Hunt et al., 2011; Kahru et al., 2011; Matsuno et al., 2012).

14 In the Bering Sea and Chukchi Sea shelf regions, marine mammals and seabirds, as  
15 homoeothermic top predators, play an important role in trophic energy flow (Schneider et al.,  
16 1986; Piatt and Springer, 2003). As mobile predators that can respond quickly to shifts in prey  
17 distribution (i.e., by switching foraging areas or prey species), changes in their distribution  
18 can potentially serve as indicators of fluctuations of trophic relationships (Sydeman et al.,  
19 2006; Iverson et al., 2007; Piatt et al., 2007). Recently, the northern Bering and Chukchi shelf  
20 have shown evidence of shifts in upper trophic level species composition, distribution, and  
21 abundance. For example, gray whales (*Eschrichtius robustus*) in the Chirikov Basin expanded  
22 their foraging range to the north as their prey biomass (amphipods) decreased from 1983 to  
23 2000 (Moore et al., 2003). Similarly, dramatic declines in numbers of spectacled eiders  
24 (*Somateria fischeri*) coincided with declines in clam populations they feed on in the northern  
25 Bering Sea (Lovvorn et al., 2009). In addition, recent sea-ice loss and the concurrent increases  
26 in sea surface temperature (SST) in the western Beaufort Sea may have reduced availability of  
27 Arctic Cod (*Boreogadus saida*), which are primary prey of black guillemots (*Cepphus grylle*  
28 *mandtii*) breeding at Cooper Island in the western Beaufort Sea; these seabirds subsequently  
29 shifted to feeding their chicks sculpin (Cottidae), which led to lower nestling growth and  
30 survival compared to that in historical periods (1975–1984) (Divoky et al., 2015). Consistent  
31 with these examples, we propose that at-sea distributions of top predators in relation to their  
32 prey can provide useful information about large-scale ecosystem changes in these regions  
33 with seasonal sea-ice.

1           Short-tailed shearwaters (*Ardenna tenuirostris*) migrate annually from their breeding  
2 colonies in southeastern Australia and Tasmania to spend their non-breeding period of ca. 5  
3 months in the northern North Pacific. Up to 16 million birds stay in the Bering Sea between  
4 April and October (Schneider and Shuntov, 1993), where they consume substantial amounts  
5 of krill, particularly the euphausiids *Thysanoessa raschii* and *T. inermis* (Schneider et al.,  
6 1986; Hunt et al., 1996, 2002; Toge et al., 2011). In the Bristol Bay area of the southeastern  
7 Bering Sea, krill consumption by short-tailed shearwaters from April to June was estimated to  
8 be 30,000 tons (Ogi et al., 1980), a consumption roughly equivalent to that (32,280 tons) by  
9 sockeye salmon (*Oncorhynchus nerka*) (Nishiyama, 1974). Thus, the trophic linkage between  
10 short-tailed shearwaters and krill can be one important pathway of energy flow in the Bering  
11 Sea ecosystem (Schneider et al., 1986).

12           Tracking studies using geolocators revealed the large-scale migration of shearwater  
13 species (e.g., Shaffer et al., 2006). A geocator-based study by Yamamoto et al. (2015)  
14 showed that short-tailed shearwaters in the Bering Sea move north through the Bering Strait  
15 to feed in the Chukchi Sea during August and September. This northward shift of distribution  
16 was hypothesized to be related to the temperature driven changes in the abundance of their  
17 prey (krill), since the timing of krill spawning coincides with the seasonal increase in water  
18 temperature (Smith, 1991). However, large-scale (Bering Sea and Chukchi Sea) relationships  
19 between the distribution of short-tailed shearwaters and that of krill have not been explored.  
20 In this study, we investigated at-sea distribution of short-tailed shearwaters using vessel-based  
21 surveys in the Chukchi Sea in September 2012 and June–July 2013 in the Bering and Chukchi  
22 seas. We also examined the distribution of zooplankton (including krill) in the Bering and  
23 Chukchi seas.

## 24   **2 Materials and Methods**

### 25   **2.1 Seabird surveys**

26           At-sea seabird surveys were conducted onboard the *R/V Mirai* (Japan Agency for Marine-  
27 Earth Science and Technology) on 9 September–10 October 2012 and the *T/S Oshoro-Maru*  
28 (Department of Fisheries Sciences, Hokkaido University) on 19 June–28 July 2013 in the  
29 Bering and Chukchi seas (50–78°N, 170°E–150°W, Fig. 1 and Table 1). We used standard  
30 strip transect methodology (Tasker et al., 1984), with surveys conducted at an average vessel  
31 speed of 10.7 knots. All birds (both flying and sitting on water) were counted continuously

1 from the bridge (eye height above sea surface of 13.6 m on *R/V Mirai* and 8.5 m on *T/S*  
2 *Oshoro-Maru*). We used a 300-m transect window (from bow to 90° to port or starboard) for  
3 *T/S Oshoro-Maru* and a 500-m transect window for *R/V Mirai*, from the side of the vessel that  
4 offered the best observation conditions (i.e., lowest sun glare). Birds following the vessel  
5 were recorded when they first entered the transect and were ignored thereafter.

6 Sooty shearwater (*Ardenna griseus*) and short-tailed shearwater are difficult to  
7 distinguish in the field and sooty shearwaters are rare north of the Aleutian Islands (Howell,  
8 2012). All dark shearwaters that we identified to species were short-tailed shearwaters,  
9 therefore we assumed that all unidentified shearwaters were short-tailed shearwaters, and  
10 hereafter refer to total dark shearwaters as “shearwaters”.

11 We calculated the relative density (birds km<sup>-2</sup>) of shearwaters over a 50 km × 50 km  
12 grid. We selected this grid size because foraging area fidelity of shearwaters was estimated to  
13 be 10 to 10<sup>2</sup> km in the southeastern Bering Sea (Baduini et al., 2006), and there is a strong  
14 correlation between density of shearwaters and an acoustic index of zooplankton abundance  
15 (including krill) at a scale of 10 km in the northern Sea of Japan (Kurasawa et al., 2011). To  
16 standardize for unequal survey effort among cells, the total number of birds in each grid cell  
17 was divided by km<sup>2</sup> surveyed in the cell.

18 An additional source of at-sea seabird data was obtained from the North Pacific Pelagic  
19 Seabird Database 2.0 (NPPSD; Drew et al., 2015). For this dataset, we excluded aerial  
20 surveys and surveys without a defined transect width. For additional information on the  
21 datasets and data collection methods used in the NPPSD, see Renner et al. (2013) and Kuletz  
22 et al. (2014). All NPPSD surveys used standard strip transect methodology, usually with a  
23 300-m strip width, and counted all birds on the water or actively foraging (Tasker et al., 1984).  
24 Two different methods for counting flying birds were used. Most surveys in the 1970s and  
25 1980s counted all flying birds observed within the transect strip. Beginning in the 1980s,  
26 many surveys used the snapshot method (Tasker et al., 1984), which was adopted by most  
27 investigators by the 2000s. The snapshot is a simple method for minimizing overestimation of  
28 flying birds and it allows calculation of densities (birds km<sup>-2</sup>) without further manipulation of  
29 the data. To meld datasets collected using these different survey methods, we divided the  
30 number of flying birds in a sample by a correction factor  $\lambda_m$  when the snapshot method was  
31 not used. Lacking empirical data for short-tailed shearwater flight speeds, we used the value  
32  $\lambda_m = 2.3$  reported by van Franeker (1994) for the southern fulmar (*Fulmarus glacialisoides*), a

1 bird of similar size and flying habits. To examine seasonal changes in the density of  
2 shearwaters in the Bering Sea and Chukchi Sea, we applied generalized additive models  
3 (GAMs) where the density of shearwaters was the response variable and Julian date (all  
4 sampling years, 1975 through 2012 were combined) was the explanatory variable. GAMs  
5 were fitted using the package mgcv in R software (version 3.1.0, R Development Core Team  
6 2014).

## 7 **2.2 Krill sampling**

8 A total of 171 zooplankton samples were collected by the science crews of *T/S Oshoro-Maru*  
9 and *R/V Mirai* for the Bering Sea during 20–31 July 2007 ( $n = 27$ ), 24 June–2 July 2008 ( $n =$   
10 33) and 22 June–7 July 2013 ( $n = 34$ ), and for the Chukchi Sea during 13 September–3  
11 October 2012 ( $n = 50$ ) and 8–17 July 2013 ( $n = 27$ ) (Table 2). Zooplankton samples were  
12 collected at day or night by vertical tows with a North Pacific Standard Net (NORPAC)  
13 (mouth diameter 45 cm, mesh size 335  $\mu\text{m}$ ) from 5 m above the bottom to the surface (depths  
14 of most stations were  $\sim 50$  m), covering the entire vertical distribution range of krill, which  
15 undertake a diurnal vertical migration (Watkins, 2000). Thus, the diurnal vertical migration of  
16 krill should not have affected our samples. The volume of water filtered through the net was  
17 estimated using a flow-meter mounted in the mouth of the net. Zooplankton samples were  
18 immediately preserved with 5% v/v borax buffered formalin. In the laboratory (Hokkaido  
19 University), samples were split using a Motoda box splitter (Motoda, 1959). Krill in the half  
20 aliquots were identified and enumerated under a dissecting microscope. We accordingly  
21 measured the total length of krill (to the nearest 0.1 mm from the tip of the rostrum to the  
22 posterior end of the telson; Hanamura et al., 1989) usually on 20% of the specimens for each  
23 sample, and divided them into five growth stages (i.e., nauplius, calyptopis, furcilia, juvenile,  
24 and adult) following Brinton et al. (2000). We calculated the wet weight per individual krill  
25 using the length-weight relationship equation (wet weight =  $0.009 \times \text{total length}^{3.02}$ ,  $R^2 = 0.95$ ,  
26  $p < 0.0001$ , for *T. raschii* (as per Harvey et al., 2012)); we then, estimated the biomass of krill  
27 ( $\text{mg m}^{-2}$ ) for each region (i.e., Bering Sea and Chukchi Sea) as mean wet weight (mg) per  
28 individual multiplied by abundance ( $\text{ind. m}^{-2}$ ).

29 Krill samples collected by plankton net could be highly biased, because of the high net-  
30 avoidance ability of krill (Watkins, 2000), but they can provide a rough estimate of krill  
31 abundance across several orders of magnitude. Net avoidance can affect the absolute number  
32 of krill entering the net due to the advanced eye structures in both juveniles and adults

1 (Watkins, 2000). Furthermore, since large size of krill can swim faster than small size of krill,  
2 they may be able to avoid the net more successfully (Hovekamp, 1989). Thus, the absolute  
3 abundance of juvenile and adult krill may have been underestimated in this study.  
4 Nevertheless, we were able to compare the relative abundance of each size class (or growth  
5 stage) of krill between regions.

## 6 **2.3 Analyses**

7 To explore the factors affecting spatial patterns of shearwaters we used a habitat modelling  
8 approach using data collected in September 2012 in the Chukchi Sea and in July 2013 in the  
9 Bering and Chukchi seas, when both seabird and zooplankton surveys were conducted.  
10 Because shearwater densities among 50-km grid cells were highly variable (Min.–Max.: 0–  
11 5,601.1 birds km<sup>-2</sup>), and the sample size was relatively small (20 grid cells in September 2012  
12 and 52 in July 2013), we examined the factors affecting the presence or absence of  
13 shearwaters. We used generalized linear models (GLMs) where the occurrence  
14 (presence/absence in each 50-km grid cell) of shearwaters was the response variable,  
15 assuming a binomial distribution with the logit link function. Explanatory variables included  
16 three continuous oceanographic data – sea surface temperature (*SST*; °C), sea surface  
17 chlorophyll *a* concentrations (*Chla*; mg m<sup>-3</sup>), and ocean bottom slope (*Slope*; °), and a  
18 categorical krill data on their occurrence and size.

19 Monthly *SST* and *Chla* data were obtained from moderate-resolution  
20 spectroradiometer/Aqua standard mapped images with a spatial resolution of approximately 9  
21 km provided by Ocean Color website (<http://oceancolor.gsfc.nasa.gov>). The *Slope* was  
22 calculated from ETOPO 1-min gridded data provided by NOAA’s National Geospatial Data  
23 Center, using the slope function package in the Spatial Analyst tool (ArcGIS 10.0). These  
24 oceanographic parameters were spatially resampled to 50-km scales (the *Slope* was calculated  
25 after ETOPO 1-min were spatially resampled to 50-km scales) using the SeaWiFS Data  
26 Analysis System version 6.2 software to match the scale of the bird data. Krill sizes (total  
27 length in mm) were divided into two categories, “small” (< 8.0 mm in total length) and  
28 “large” (> 8.0 mm), since the length of krill found in shearwater diet during June–August in  
29 the southeastern Bering Sea was > 8.8 mm (Vlietstra et al., 2005). Then, the occurrence  
30 (presence or absence) and krill size (small or large) were treated as a categorical explanatory  
31 variable for each station. Each station with krill samples was linked to the closest seabird  
32 survey grid cell, with distance between krill and seabird cells averaging ~ 33 km. We defined

1 two seasonal periods: summer (June–July) and fall (August–October), based on documented  
2 phytoplankton bloom in the southern Chukchi Sea (spring bloom occurs in May–July and fall  
3 bloom occurs in August–October; Nishino et al., 2016). The data for each season and year  
4 (fall 2012 and summer 2013) were pooled into a single dataset for constructing a GLM,  
5 because the sample size was small due to limited seabird surveys or missing environmental  
6 data (due to cloud cover) in remotely sensed data. Thus, to evaluate the effect of season we  
7 added “season” (summer or fall) as a second categorical explanatory variable. We did not  
8 have enough data (based on two cruises in fall 2012 and summer 2013) to examine  
9 interannual changes (2012 vs. 2013) in the size and abundance of krill (e.g., Pinchuk and  
10 Coyle, 2008; Bi et al., 2015).

11 Prior to modelling, the co-linearity of all continuous explanatory variables was  
12 evaluated using variance inflation factors (VIF). All VIF values were below 5, indicating that  
13 no co-linearity was assumed in this study (Zuur et al., 2009). We selected the best-performing  
14 models using Akaike Information Criterion (AIC) values, assuming that models having  $\Delta\text{AIC}$   
15  $\leq 2$  were better-fitting models (Burnham and Anderson, 2010). All statistical analyses were  
16 carried out in R software (version 3.1.0, R Development Core Team 2014).

## 17 **3 Results**

### 18 **3.1 Distribution of shearwaters and krill**

19 In September 2012, shearwaters were widely distributed in both the Bering Sea and Chukchi  
20 Sea (Fig. 1a). Shearwater density (birds  $\text{km}^{-2}$  in each 50-km grid) was high in the Bering Strait  
21 ( $46.7 \text{ km}^{-2}$ ), the area off Point Hope ( $145.6 \text{ km}^{-2}$ ) and off Barrow ( $37.8 \text{ km}^{-2}$ ), with few birds  
22 in the Bering Sea basin ( $11.1 \text{ km}^{-2}$ ) (Fig. 1a). No shearwaters were found in the Chukchi Sea  
23 basin (Fig. 1a). In June–July 2013, shearwaters were distributed in the Bering Sea, while no  
24 birds were found in the Bering Strait and Chukchi Sea (Fig. 1b). Shearwater density in the  
25 northwestern Bering shelf ( $1.1 \text{ km}^{-2}$ ) was lower than that in the southeastern Bering shelf ( $4.4$   
26  $\text{km}^{-2}$ ) and around the Aleutian Islands ( $425.6 \text{ km}^{-2}$ ) (Fig. 1b). NPPSD data indicated that  
27 shearwater density in the Bering Sea increases between mid-May and September, with the  
28 peak in early June (Fig. 2a). Shearwater density in the Chukchi Sea increases between mid-  
29 August and mid-October, with a peak in early September (Fig. 2b).

30 On the Bering Sea shelf in June–July, krill were collected throughout the study area  
31 (Figs. 3a–c). However, in June–July (2007, 2008, and 2013, combined), krill abundance

1 (mean  $\pm$  SD) and estimated biomass in the southeastern Bering Sea shelf ( $< 60^\circ\text{N}$ ) ( $1,631 \pm$   
2  $2,972 \text{ m}^{-2}$  for abundance,  $3,180 \text{ mg wet weight m}^{-2}$  for biomass) were higher than those in the  
3 northwestern Bering Sea shelf ( $> 60^\circ\text{N}$ ) ( $1,189 \pm 3,981 \text{ m}^{-2}$ ,  $535 \text{ mg wet weight m}^{-2}$ ). In  
4 September, no krill sampling was conducted in the Bering Sea. In the Chukchi Sea, krill were  
5 collected in both September 2012 and July 2013 (Figs 3d and e). Krill abundance in the  
6 Chukchi Sea in June–July 2013 ( $7,366 \pm 16,420 \text{ m}^{-2}$ ) was much greater than that in September  
7 2012 ( $133 \pm 304 \text{ m}^{-2}$ ), while the krill biomass in June–July 2013 ( $1,473 \text{ mg wet weight m}^{-2}$ )  
8 was similar to that in September 2012 ( $2,190 \text{ mg wet weight m}^{-2}$ ).

### 9 **3.2 Size of krill**

10 Identified krill specimens in the Bering Sea ( $n = 10$ ) included four *T. raschii*, three *T. longipes*,  
11 two *T. inermis* and a single *T. spinifera*, and those in the Chukchi Sea ( $n = 43$ ) included 40 *T.*  
12 *raschii* and three *T. inermis*. In the Bering Sea, krill collected in June–July (2007, 2008, and  
13 2013, combined) were larger in the southeastern shelf than those collected in the northwestern  
14 shelf (Mann-Whitney's *U* test,  $p < 0.05$ ) (Fig. 4a). Krill collected in the southeastern shelf  
15 were comprised of nauplius (1%), calyptopis (27%), furcilia (71%), and adult (1%) stage,  
16 while those collected in the northwestern shelf were comprised of slightly younger stages  
17 (nauplius (2%), calyptopis (88%), and furcilia (30%)).

18 In the Chukchi Sea, krill collected in September 2012 were larger than those in July  
19 2013 (Mann-Whitney's *U* test,  $p < 0.05$ ) (Fig. 4b). In July 2013, 90% of individuals were in  
20 the calyptopis stage, while in September 2012, 74% of individuals were furcilia, 7% juvenile,  
21 and 19% adult stage.

### 22 **3.3 Occurrence of krill and shearwaters**

23 Five better-fitting models ( $\Delta\text{AIC} \leq 2$ ) were selected for explaining the occurrence of  
24 shearwaters (Table 3). *SST* was included in all better-fitting models and its effect was positive,  
25 indicating that the probability of the occurrence of shearwaters was higher in warmer waters  
26 in the Bering and Chukchi seas. The other explanatory variables such as *Chla*, *Slope* and *krill*  
27 were included in one or two better-fitting models, suggesting they had less influence (Table 3).

28 Since all better-fitting models included *season* as an explanatory variable, values of other  
29 explanatory variables were compared between grids with and without shearwaters during  
30 summer 2013 or fall 2012 separately. *SST* was higher in grids with shearwaters than in those



1 without shearwaters both in summer 2013 and fall 2012 (Table 4). *Chla* was not different  
2 between grids with or without shearwaters in summer 2013 or fall 2012 (Table 4). *Slope* had a  
3 different effect between seasons; *Slope* was steeper in grids with shearwaters than in grids  
4 without shearwaters in summer 2013, but the opposite trend occurred in fall 2012 (Table 4).  
5 Shearwaters appeared to occur more often in grids with large size of krill in fall 2012 but this  
6 trend was not apparent in summer 2013 (Table 5). Shearwater density seemed to be greater in  
7 grids with large size of krill than in those without large size of krill in fall 2012 and summer  
8 2013 (Table 6).

## 9 **4 Discussion**

### 10 **4.1 Distribution and diets of shearwaters**

11 Our surveys and the long-term NPPSD both showed similar seasonal changes in the  
12 distribution of shearwaters within the Bering and Chukchi seas. In May–July shearwaters  
13 mainly used the Bering Sea and Aleutian Islands, while in August–October they were widely  
14 distributed both in the Bering Sea and Chukchi Sea. Our results are consistent with previous  
15 studies from both vessel-based surveys and tracking studies of individual birds, which also  
16 show interannual variation in their abundance. Tracked short-tailed shearwaters concentrated  
17 in the southeastern Bering Sea in July 2010 and 68% of them (13 of 19 birds) moved into the  
18 Chukchi Sea in September 2010 (Yamamoto et al., 2015). In contrast, only 38% of tracked  
19 shearwaters (9 of 24 birds) moved into the Chukchi Sea from the Bering Sea in September  
20 2011 (Yamamoto et al., 2015). Boat surveys in the Bering and Chukchi seas during early July  
21 to early August (2007–2012, pooled) by Wong et al. (2014) showed that high densities of  
22 shearwaters occurred in the Aleutian Islands, southern Bering Sea, and Bering Strait, but few  
23 birds were found in the Chukchi Sea. The other vessel-based surveys in the northern Chukchi  
24 Sea occurred during August–October, 2008–2010; in this study, Gall et al. (2013) showed that  
25 shearwaters were found there from mid August to early October, with highest densities  
26 occurring in September in all 3 years. Overall, our study and previous studies show a similar  
27 pattern, with a substantial portion of shearwaters that are in the Bering Sea in summer moving  
28 into the Chukchi Sea in fall.

29 Information on the diets of shearwaters was not collected during this study, but previous  
30 studies have shown that krill comprise most of their diet in the northern North Pacific and  
31 Bering Sea (Table 7). Still the diets of shearwaters are highly variable across sub-regions,  
32 seasons, and years (Ogi et al., 1980; Hunt et al., 1996, 2002). Other prey species have

1 included fish (19% in wet weight), squid (9%), copepods (1%) and crab larvae (2%) (Table 7).  
2 Within the krill prey items, *T. raschii* was the primary species, comprising 72–100% of diet  
3 for short-tailed shearwaters in the Bering Sea during the non-breeding season (Schneider et al.,  
4 1986; Hunt et al., 1996, 2002). Thus, in this study, we focused on the linkage between  
5 distribution of krill and the seasonal movements of migrating shearwaters at a regional scale  
6 (Bering Sea vs. Chukchi Sea).

7 In the Aleutian Pass and southeastern Bering Sea, shearwaters ate large size of krill  
8 (11.5–16.9 mm) even when small size of krill (5.0–8.4 mm) were present, although they  
9 tended to feed on smaller krill at a tidal front (Vlietstra et al., 2005). In the southeastern  
10 Bering Sea, short-tailed shearwaters consumed almost exclusively the mature females of *T.*  
11 *raschii* carrying spermatophores (Hunt et al., 1996; Baduini et al., 2001), indicating that they  
12 fed on the mating swarm of krill during daytime. Thus, short-tailed shearwaters tended to feed  
13 on larger and more mature krill, perhaps because larger krill contain more gross energy than  
14 smaller krill (Färber-Lorda et al., 2009). Additionally, surface swarms of adult krill might be  
15 more easily available for diurnal surface feeders such as short-tailed shearwaters (Hunt et al.,  
16 1996).

## 17 **4.2 Krill and short-tailed shearwaters**

18 The movement of shearwaters from the Bering Sea to Chukchi Sea in fall might be associated  
19 with the seasonal increase in krill size in the Chukchi Sea. In the Chukchi Sea, the size of krill  
20 collected during our survey period in September 2012 ( $9.6 \pm 5.0$  mm), was within the size  
21 range found in the stomach of short-tailed shearwaters in the southern Bering Sea (Vlietstra et  
22 al., 2005); they were also larger and older than those collected in July 2013 in the same region  
23 ( $1.9 \pm 1.2$  mm) (Fig. 4b).

24 In contrast to the Chukchi Sea, a study in the southeastern Bering Sea shelf, found that  
25 the mature *T. raschii* was abundant during May–June, while the smaller immature krill was  
26 abundant during August–September (Coyle and Pinchuk, 2002). Krill eggs and nauplii  
27 collected using CalVET net (CalCOFI vertical egg tow, 150- $\mu$ m mesh) in the southeastern  
28 Bering Sea shelf were more abundant during May–June ( $56 \text{ m}^{-3}$  in 1997,  $133 \text{ m}^{-3}$  in 1998 and  
29  $306 \text{ m}^{-3}$  in 1999) than during August–September ( $0.2 \text{ m}^{-3}$  in 1997,  $11 \text{ m}^{-3}$  in 1998 and  $3.5 \text{ m}^{-3}$   
30 in 1999). This difference occurred in all three sampling years (1997–1999), indicating that the  
31 most of the krill spawning might occur in May–June in the southeastern Bering shelf (Coyle  
32 and Pinchuk, 2002). Earlier, Smith (1991) showed that high abundance of krill nauplii on the

1 inner shelf of southeastern Bering Sea occurred in mid-May–June. Furthermore, continuous  
2 echo data collected by the mooring system in the southeastern Bering Sea in 2006 showed  
3 that the densities of krill were high in July and decreased in August–September (Stafford et al.,  
4 2010). These studies indicate that krill in the southeastern Bering Sea mainly spawns in May–  
5 June, and its size and density decreased seasonally. We should note here that timing of krill  
6 spawning varies between species; *T. inermis* (commonly found in middle and outer shelf  
7 domain) spawns in early spring (April–May) at the onset of the phytoplankton bloom and  
8 relies on lipid reserves to produce eggs, while *T. raschii* (commonly found in the middle and  
9 inner shelf domains) reproduces for a more prolonged period through August–September with  
10 main spawning during May–June (Smith, 1991; Coyle and Pinchuk, 2002), apparently  
11 utilizing ambient food supplies. The presence of krill in various developmental stages is  
12 coincident with a portion of the short-tailed shearwaters staying in the southeastern Bering  
13 shelf until October, where they feed on adult *T. raschii* that continue spawning through  
14 August–September (Hunt et al., 1996).

15 In the Chukchi Sea in September 2012, the presence of large size of krill (> 8.0 mm)  
16 was associated with the occurrence and high density of shearwaters (Tables 5 and 6). Also, in  
17 the Bering Sea in July 2013, the density of shearwaters was higher in the southeastern shelf  
18 than in the northwestern shelf (Fig. 1b), which might be related to the higher abundance and  
19 the presence of larger sized krill there (Sigler et al., 2012; Bi et al., 2015; this study). These  
20 results also support our hypothesis that seasonal northward movement of shearwaters might  
21 be associated with the seasonal increase in krill size in the Chukchi Sea.

22 The interannual differences in krill abundance could have been due to the different  
23 seasons in which we sampled in the Chukchi Sea between years (September 2012 and July  
24 2013). Previous studies showed that krill abundance in the eastern Bering Sea are not only  
25 seasonal but also variable from year to year (Stabeno et al., 2012; Hunt et al., 2015); krill  
26 abundance on the Bering Sea shelf is greater in years with cold, icy springs and cold summers  
27 versus years with warmer conditions (Coyle et al., 2008; Pinchuk and Coyle, 2008; Hunt et al.,  
28 2015). Stabeno et al. (2012) hypothesized that the growth and survival of krill are poor in the  
29 warm water years because of lack of food (i.e., ice-associated bloom) and high predation  
30 pressure due to the increase and range expansion of predators such as walleye pollock  
31 (*Theragra chalcogramma*). In our study, the first day when sea-ice concentrations were below  
32 10% in the southern Chukchi Sea (68°03N, 168°50W) were 9 June in 2012 and 10 June in  
33 2013. No sea-ice was found in the southeastern Bering Sea shelf (56°40N, 163°52W, Mooring

1 2) in both 2012 and 2013 (Fig. S1). Thus, the timing of sea-ice retreat did not differ  
2 substantially between 2012 and 2013. SST in 2013 was about 1 °C higher than that in 2012 in  
3 the southeastern Bering Sea shelf and southern Chukchi Sea (Fig. S2). The surface  
4 chlorophyll *a* concentrations peaked on 14 May in 2012 and 10 May in 2013 in the  
5 southeastern Bering Sea shelf and on 20 June in 2012 and 12 June in 2013 in the southern  
6 Chukchi Sea (Fig S3). The timing of spring bloom in 2013 was therefore 4–8 days earlier than  
7 that in 2012. As a result, krill recruitment might have been poor in 2013 in the Bering and  
8 Chukchi Seas because of warmer SST and earlier spring bloom compared to 2012. One  
9 possibility we cannot exclude is that shearwater distribution differed between years because  
10 of interannual differences in krill abundance (not seasonal patterns); i.e., shearwaters were in  
11 the Chukchi Sea in September 2012, but not in July 2013 because there was a stronger krill  
12 recruitment (and high krill abundance) in 2012.

### 13 **4.3 Environmental changes and trophic effects through krill**

14 Our study indicates that one of the explanations for the seasonal movement of shearwaters is  
15 the spatial pattern of krill. Other top predators show a similar relationship with their prey.  
16 There are several examples among marine mammals: for example, bowhead whales (*Balaena*  
17 *mysticetus*) feed on subsurface patches of krill (*T. raschii*) in the western Chukchi Sea during  
18 fall (September–October; Moore et al., 1995). Gray whales that usually feed on benthic  
19 amphipods (Moore et al., 2003) feed on krill when and where abundance of amphipods  
20 decreased and/or that of krill increased (Bluhm et al., 2007). The arrival of migratory fin  
21 whales (*Balaenoptera physalus*) in the southern Chukchi Sea in August coincided with an  
22 increase in water temperature and abundance of zooplankton (including krill and large  
23 copepods) transported from the Bering Sea (Tsuji et al., 2016). Krill therefore serves as an  
24 important component of energy transfer from phytoplankton to top predators in the marine  
25 food webs of the northern Bering Sea and southern Chukchi Sea.

26 In the Bering Sea, spawning of krill (*T. raschii*) are influenced not only by seasonal  
27 change in ocean temperature (Smith, 1991) but also by elevated phytoplankton density (Paul et  
28 al., 1990; Hunt et al., 1996). *T. raschii* relies on its stored lipids to overwinter (Falk-Petersen  
29 et al., 2000), and has been observed foraging on under-ice algae, exhibiting higher feeding  
30 rates when feeding on large, ice-related algae in the laboratory (Lessard et al., 2010). The  
31 timing of sea-ice retreat can influence primary producers by modifying light availability,  
32 which could in turn affect krill abundance (Stabeno et al., 2012). Indeed, krill abundance

1 increased during a period of cold years when the extent of sea-ice was large, but krill  
2 decreased during the period with warm years (Coyle et al., 2008; Hunt et al., 2011; Ressler et  
3 al., 2012), although the mechanisms remain unclear.

4         The distribution and abundance of krill in the Chukchi Sea are believed to be affected  
5 by the advection of the Pacific water through the Bering Strait (Berline et al., 2008, Eisner et  
6 al., 2013). Our results showed that shearwaters occurred more frequently in waters of 3–9 °C  
7 SST in the Bering Strait and southern Chukchi Sea, which is within the ranges of SST of  
8 Pacific water masses in the Chukchi Sea (Alaskan Coastal Water, 2–13 °C; Bering Shelf Water  
9 and Anadyr Water, 0–10 °C; Coachman et al., 1975, Eisner et al., 2013). There are interannual  
10 and regional variations in the advection of krill from the Bering Sea to the Chukchi Sea  
11 (Berline et al., 2008) and the volume of Pacific water advection is known to be associated  
12 with seasonality of sea-ice coverage (Woodgate et al., 2006, 2010). Although krill  
13 reproduction has not been confirmed in the Chukchi Sea (Siegel, 2000; Berline et al., 2008),  
14 spawning of *T. raschii* has been reported in the Laptev Sea (>75°N) in the Russian Arctic  
15 (Timofeev, 2000). Further research on the potential recruitment of krill in the southern  
16 Chukchi Sea, and on mechanisms responsible for the seasonal and interannual variations in  
17 krill abundance, be usefull in interpreting shearwater migratory behavior.

18         In conclusion, krill is one of the key prey species driving distribution of top predators  
19 in the Arctic Ocean. Sea-ice dynamics, increases in water temperature, and timing of  
20 phytoplankton bloom affect the recruitment and development of krill in the Bering Sea, which  
21 via advection into the Chukchi Sea, transfers energy to predators such as short-tailed  
22 shearwaters which forage in the Arctic in late summer and fall.

### 23 **Author contributions**

24 Y. Watanuki and K.J. Kuletz designed and coordinated the vessel-based seabird surveys. B.  
25 Nishizawa, E.A. Labunski, and Y. Watanuki measured the distribution of short-tailed  
26 shearwaters during the cruise. K. Matsuno and A. Yamaguchi collected the zooplankton  
27 samples during the cruise. B. Nishizawa performed species identification and enumeration of  
28 the zooplankton samples in the laboratory, and analyzed all of the data used in this study. B.  
29 Nishizawa and Y. Watanuki wrote the manuscript, with contributions from all of the co-  
30 authors.

### 31 **Acknowledgements**

1 We thank the captain, officers, and crews of the *T/S Oshoro-Maru* and *R/V Mirai*, and T.  
2 Hirawake (Chief scientist of the *T/S Oshoro-Maru* cruise in 2013), Y. Iwahara, Y. Mitani, T.  
3 Nakano and Y. Kono for their help in seabird surveys and zooplankton samplings. H. Waga  
4 helped to analyze satellite data of Chla and sea-ice concentration. We also thank G. Hunt who  
5 provided useful comments on the manuscript. The study was supported by Green Network of  
6 Excellence Program (led by T. Kikuchi) funded by the Ministry of Education, Culture, Sports,  
7 Science, and Technology, Japan.

8

## 1 **References**

- 2 Baduini, C. L., Hunt, G. L., Jr., Pinchuk, A. I. and Coyle, K. O.: Patterns in diet reveal  
3 foraging site fidelity of short-tailed shearwaters in the southeastern Bering Sea, *Mar.*  
4 *Ecol. Prog. Ser.*, 320, 279–292, 2006.
- 5 Baduini, C. L., Hyrenbach, K. D., Coyle, K. O., Pinchuk, A., Mendenhall, V., and Hunt, G.  
6 L.: Mass mortality of short-tailed shearwaters in the south-eastern Bering Sea during  
7 summer 1997, *Fish. Oceanogr.*, 10, 117–130, doi: 10.1046/j.1365-  
8 2419.2001.00156.x, 2001.
- 9 Berline, L., Spitz, Y. H., Ashjian, C. J., Campbell, R. G., Maslowski, W., and Moore, S. E.:  
10 Euphausiid transport in the Western Arctic Ocean, *Mar. Ecol. Prog. Ser.*, 360, 163–  
11 178, doi: 10.3354/meps07387, 2008.
- 12 Bi, H., Yu, H., Pinchuk, A., et al.: Interannual summer variability in euphausiid populations  
13 on the eastern Bering Sea shelf during the recent cooling event (2008–2010), *Deep*  
14 *Sea Res. I*, 95, 12–19, 2015.
- 15 Bluhm, B. A., Coyle, K. O., Konar, B., and Highsmith, R.: High gray whale relative  
16 abundances associated with an oceanographic front in the south-central Chukchi Sea,  
17 *Deep-Sea Res. II*, 54, 2919–2933, doi: 10.1016/j.dsr2.2007.08.015, 2007.
- 18 Brinton, E., Ohman, M. D., Townsend, A. W., Knight, M. D. and Bridgeman, A. L.:  
19 Euphausiids of the World Ocean (World Biodiversity Database CD-ROM Series),  
20 Springer-Verlag, New York, 2000.
- 21 Burnham, K. P. and Anderson, D. R.: Model selection and multi-model inference: a practical  
22 information-theoretic approach, 2nd edn, Springer, New York, 488 pp., 2010.
- 23 Coachman, L. K., Aagaard, K. and Tripp, R. B.: Bering Strait: The Regional Physical  
24 Oceanography, Univ. of Washington Press, Seattle, 172 pp., 1975.
- 25 Coyle, K. O. and Pinchuk, A. I.: The abundance and distribution of krill and zero-age pollock  
26 on the inner shelf of the southeast Bering Sea near the Inner Front in 1997-1999,  
27 *Deep-Sea Res. II*, 49, 6009–6030, 2002.
- 28 Coyle, K. O., Pinchuk, A. I., Eisner, L. B., and Napp, J. M.: Zooplankton species composition,  
29 abundance and biomass on the eastern Bering Sea shelf during summer: the potential

- 1           role of water column stability and nutrients in structuring the zooplankton  
2           community, *Deep-Sea Res. II*, 55, 1755–1791, 2008.
- 3   Divoky, G.J., Lukacs, P.M., and Druckenmiller, M.L.: Effects of recent decreases in arctic sea  
4           ice on an ice-associated marine bird, *Prog. Oceanog.*, 136, 151–161, 2015.
- 5   Drew, G.S., Piatt, J.F., and Renner, M.: User’s guide to the North Pacific Pelagic Seabird  
6           Database 2.0: U.S. Geological Survey Open-File Report 2015-1123, 52 pp., 2015.
- 7   Eisner, L., Hillgruber, N., Martinson, E., and Maselko, J.: Pelagic fish and zooplankton  
8           species assemblages in relation to water mass characteristics in the northern Bering  
9           and southeast Chukchi seas, *Polar Biol.*, 36, 87–113, 2013.
- 10   Färber-Lorda, J., Gaudy, R., and Mayzaud, P.: Elemental composition, biochemical  
11           composition and caloric value of Antarctic krill. Implications in Energetics and  
12           carbon balances, *J. Mar. Syst.*, 78, 518–524, 2009.
- 13   Falk-Petersen, S., Hagen, W., Kattner, G., Clarke, A., and Sargent, J.: Lipids, trophic  
14           relationships, and biodiversity in Arctic and Antarctic krill. *Canadian J. Fish.*  
15           *Aquat. Sci.*, 57 (Supplement 3), S178–S191, 2000.
- 16   Gall, A. E., Day, R. H., and Weingartner, T. J.: Structure and variability of the marine-bird  
17           community in the northeastern Chukchi Sea, *Cont. Shelf Res.*, 67, 96–115, doi:  
18           10.1016/j.csr.2012.11.004, 2013.
- 19   Grebmeier, J. M., Cooper, L. W., Feder, H. M., and Sirenko, B. I.: Ecosystem dynamics of the  
20           Pacific-influenced Northern Bering and Chukchi Seas in the Amerasian Arctic, *Prog.*  
21           *Oceanogr.*, 71, 331–361, doi: 10.1016/j.pocean.2006.10.001, 2006.
- 22   Hanamura, Y., Kotori, M., and Hamaoka, S.: Daytime surface swarms of the euphausiid  
23           *Thysanoessa inermis* off the west-coast of Hokkaido, northern Japan, *Mar. Biol.*, 102,  
24           369–376, doi: 10.1007/bf00428489, 1989.
- 25   Harvey, H. R., Pleuthner, R. L., Lessard, E. J., Bernhardt, M. J., and Shaw, C. T.: Physical  
26           and biochemical properties of the euphausiids *Thysanoessa inermis*, *Thysanoessa*  
27           *raschii*, and *Thysanoessa longipes* in the eastern Bering Sea, *Deep-Sea Res. II* 65–70,  
28           173–183, 2012.
- 29   Hovekamp, S.: Avoidance of nets by euphausia-pacifica in dabob bay, *J. Plankton Res.*, 11,  
30           907–924, doi: 10.1093/plankt/11.5.907, 1989.



- 1 Howell, S. N. G.: *Petrels, Albatrosses and Storm-Petrels of North America*, Princeton  
2 University Press, Oxfordshire, 483 pp., 2012.
- 3 Hunt, G. L. Jr., et al.: *Euphausiids in the eastern Bering Sea: A synthesis of recent studies of*  
4 *euphausiid production, consumption and population control*, *Deep-Sea Res. II*, 2015.
- 5 Hunt, G. L., Baduini, C., and Jahncke, J.: *Diets of short-tailed shearwaters in the southeastern*  
6 *Bering Sea*, *Deep-Sea Res. II*, 49, 6147–6156, doi: 10.1016/s0967-0645(02)00338-7,  
7 2002.
- 8 Hunt, G. L., Jr., Blanchard, A. L., Boveng, P., Dalpadado, P., Drinkwater, K. F., Eisner, L.,  
9 Hoperoft, R. R., Kovacs, K. M., Norcross, B. L., Renaud, P., Reigstad, M., Renner,  
10 M., Skjoldal, H. R., Whitehouse, A., and Woodgate, R. A.: *The Barents and Chukchi*  
11 *Seas: Comparison of two Arctic shelf ecosystems*, *J. Mar. Syst.*, 109, 43–68, doi:  
12 10.1016/j.jmarsys.2012.08.003, 2013.
- 13 Hunt, G. L., Jr., Coyle, K. P., Hoffman, S., Decker, M. B. and Flint, E. N.: *Foraging ecology*  
14 *of short-tailed shearwaters near the Pribilof Islands, Bering Sea*, *Mar. Ecol. Prog.*  
15 *Ser.*, 141, 1–11, 1996.
- 16 Hunt, G.L., Coyle, K.O., Eisner, L.B., Farley, E.V., Heintz, R.A., Mueter, F., Napp, J.M., et  
17 al.: *Climate impacts on eastern Bering Sea foodwebs: a synthesis of new data and an*  
18 *assessment of the oscillating control hypothesis*, *ICES J. Mar. Sci.*, 68, 1230–1243,  
19 doi:10.1093/icesjms/fsr036, 2011.
- 20 Iverson, S. J., Springer, A. M., and Kitaysky, A. S.: *Seabirds as indicators of food web*  
21 *structure and ecosystem variability: qualitative and quantitative diet analyses using*  
22 *fatty acids*, *Mar. Ecol. Prog. Ser.*, 352, 235–244, doi: 10.3354/meps07073, 2007.
- 23 Kahru, M., Brotas, V., Manzano-Sarabia, M., and Mitchell, B. G.: *Are phytoplankton blooms*  
24 *occurring earlier in the Arctic?*, *Glob. Change Biol.*, 17, 1733–1739, doi:  
25 10.1111/j.1365-2486.2010.02312.x, 2011.
- 26 Kuletz, K. J., Renner, M., Labunski, E. A., and Hunt Jr., G. L.: *Changes in the distribution*  
27 *and abundance of albatrosses in the eastern Bering Sea: 1975–2010*, *Deep-Sea Res.*  
28 *Pt. II*, 109, 282–292, 2014.

- 1 Kurasawa, K., Honda, S. and Watanuki, Y.: Distribution of migrating short-tailed shearwater  
2 and breeding rhinoceros auklet and their prey in the northern Sea of Japan, Hokkaido  
3 in spring, *Jpn. J. Ornithol.*, 60, 216–227, 2011.
- 4 Lessard, E. J., Shaw, C. T., Bernhardt, M., Engel, V. L., and Foy, M. S.: Euphausiid feeding  
5 and growth in the eastern Bering Sea. *Eos Transactions of the American Geophysical*  
6 *Union*, 91(26), Ocean Sciences Meeting Supplement, Abstract IT356-01, 2010.
- 7 Li, W. K. W., McLaughlin, F. A., Lovejoy, C., and Carmack, E. C.: Smallest Algae Thrive As  
8 the Arctic Ocean Freshens, *Science*, 326, 539–539, doi: 10.1126/science.1179798,  
9 2009.
- 10 Lovvorn, J. R., Grebmeier, J. M., Cooper, L. W., Bump, J. K., and Richman, S. E.: Modeling  
11 marine protected areas for threatened eiders in a climatically changing Bering Sea,  
12 *Ecol. Appl.*, 19, 1596–1613, doi: 10.1890/08-1193.1, 2009.
- 13 Matsuno, K., Yamaguchi, A., and Imai, I.: Biomass size spectra of mesozooplankton in the  
14 Chukchi Sea during the summers of 1991/1992 and 2007/2008: an analysis using  
15 optical plankton counter data, *ICES J. Mar. Sci.*, 69, 1205–1217, doi:  
16 10.1093/icesjms/fss119, 2012.
- 17 Moore, S. E., George, J. C., Coyle, K. O., and Weingartner, T. J.: Bowhead whales along the  
18 Chukotka coast in autumn, *Arctic*, 48, 155–160, 1995.
- 19 Moore, S. E., Grebmeier, J. M. and Davies, J. R.: Gray whale distribution relative to forage  
20 habitat in the northern Bering Sea: current conditions and retrospective summary,  
21 *Can. J. Zool.*, 81, 734–742, 2003.
- 22 Motoda, S.: Devices of simple plankton apparatus, *Memoirs of the Faculty of Fisheries,*  
23 *Hokkaido University*, 7: 73–94, 1959.
- 24 Mueter, F. J., and Litzow, M. A.: Sea ice retreat alters the biogeography of the Bering Sea  
25 continental shelf, *Ecol. Appl.*, 18, 309–320, 10.1890/07-0564.1, 2008.
- 26 Nishino, S., Kikuchi, T., Fujiwara, A., Hirawake, T., and Aoyama, M.: Water mass  
27 characteristics and their temporal changes in a biological hotspot in the southern  
28 Chukchi Sea, *Biogeosciences*, 13, 2563–2578, 2016.
- 29 Nishiyama, T.: Energy requirement of Bristol Bay sockeye salmon in the central Bering Sea  
30 and Bristol Bay. In: Hood, D.W., Kelly, E.J. (Eds.), *Oceanography of the Bering Sea*

- 1 with emphasis on renewable resources, Vol. 2. Institute of Marine Sciences  
2 Occasional Publication, University of Alaska, Fairbanks, AK, USA, pp. 321–343,  
3 1974.
- 4 Ogi, H., Kubodera, T. and Nakamura, K.: The pelagic feeding ecology of the Short-tailed  
5 Shearwaters *Puffinus tenuirostris* in the Subarctic Pacific Region, J. Yamashina Inst.  
6 Ornithol., 12, 157–182, 1980.
- 7 Paul, A. J., Coyle, K. O., and Ziemann, D. A.: Timing of spawning of *Thysanoessa raschii*  
8 (Euphausiacea) and occurrence of Their Feeding-Stage Larvae in an Alaskan Bay, J.  
9 Crust. Biol., 10, 69–78, doi: 10.2307/1548670, 1990.
- 10 Perovich, D. K., and Richter-Menge, J. A.: Loss of Sea Ice in the Arctic, Annu. Rev. Marine  
11 Sci., 1, 417–441, doi: 10.1146/annurev.marine.010908.163805, 2009.
- 12 Piatt, J. F. and Springer, A. M.: Advection, pelagic food webs and the biogeography of  
13 seabirds in Beringia, Mar. Ornithol., 31, 141–154, 2003.
- 14 Piatt, J. F., Sydeman, W. J., and Wiese, F.: Introduction: a modern role for seabirds as  
15 indicators, Mar. Ecol. Prog. Ser., 352, 199–204, doi: 10.3354/meps07070, 2007.
- 16 Pinchuk, A. I., and Coyle, K. O.: Distribution, egg production and growth of euphausiids in  
17 the vicinity of the Pribilof Islands, southeastern Bering Sea, August 2004, Deep-Sea  
18 Res. II, 55, 1792–1800, 2008.
- 19 R Development Core Team: R: A language and environment for statistical computing, R  
20 Foundation for Statistical Computing, Vienna, Austria, <http://www.R-project.org>,  
21 2014.
- 22 Renner, M., Parrish, J. K., Piatt, J. F., Kuletz, K. J., Edwards, A. E., and Hunt Jr., G.L.:  
23 Modeled distribution and abundance of a pelagic seabird reveal trends in relation to  
24 fisheries. Mar. Ecol. Prog. Ser., 484, 259–277, 2013.
- 25 Ressler, P. H., DeRobertis, A., Warren, J. D., Smith, J. N., and Kotwicki, S.: Developing an  
26 acoustic index of euphausiid abundance to understand trophic interactions in the  
27 Bering Sea ecosystem, Deep-Sea Res. II, 65–70, 184–195, 2012.
- 28 Ressler, P. H., DeRobertis, A., and Kotwicki, S.: The spatial distribution of euphausiids and  
29 walleye Pollock in the eastern Bering Sea does not imply top-down control by  
30 predation, Mar. Ecol. Prog. Ser., 503, 111–122, 2014.

- 1 Schneider, D. C., Hunt, G. L., and Harrison, N. M.: Mass and energy-transfer to seabirds in  
2 the southeastern Bering sea, *Cont. Shelf Res.*, 5, 241–257, doi: 10.1016/0278-  
3 4343(86)90017-8, 1986.
- 4 Schneider, D. C., and Shuntov, V. P.: The trophic organization of the marine bird community  
5 in the Bering Sea, *Rev. Fish. Sci.*, 1, 311–335, 1993.
- 6 Shaffer, S. A., Tremblay, Y., Weimerskirch, H., Scott, D., Thompson, D. R., Sagar, P. M.,  
7 Moller, H., Taylor, G. A., Foley, D. G., Block, B. A., and Costa, D. P.: Migratory  
8 shearwaters integrate oceanic resources across the Pacific Ocean in an endless  
9 summer, *Proc Natl Acad Sci USA*, 103,12799–12802, 2006
- 10 Siegel, V.: Krill (Euphausiacea) life history and aspects of population dynamics, *Can. J. Fish.*  
11 *Aquat. Sci.*, 57, 130–150, doi: 10.1139/cjfas-57-S3-130, 2000.
- 12 Sigler, M. F., Kuletz, K. J., Ressler, P. H., Friday, N. A., Wilson, C. D., and Zerbini, A. N.:  
13 Marine predators and persistent prey in the southeast Bering Sea, *Deep-Sea Res. II*,  
14 65–70, 292-303, doi: 10.1016/j.dsr2.2012.02.017, 2012.
- 15 Smith, S. L.: Growth, development and distribution of the krill *Thysanoessa raschi* (M. Sars)  
16 and *Thysanoessa inermis* (Krøyer) in the southeastern Bering Sea, *Polar Res.*, 10,  
17 461–478, 1991.
- 18 Stabeno, P. J., Kachel, N. B., Moore, S. E., et al.: Comparison of warm and cold years on the  
19 southeastern Bering Sea shelf and some implications for the ecosystem, *Deep-Sea*  
20 *Res. II* 65–70, 31–45, 2012.
- 21 Stafford, K. M., Moore, S. E., Stabeno, P. J., Holliday, D. V., Napp, J. M., and Mellinger, D.  
22 K.: Biophysical ocean observation in the southeastern Bering Sea, *Geophys. Res.*  
23 *Lett.*, 37, doi: 10.1029/2009gl040724, 2010.
- 24 Steele, M., Ermold, W., and Zhang, J.: Arctic Ocean surface warming trends over the past 100  
25 years, *Geophys. Res. Lett.*, 35, doi: 10.1029/2007gl031651, 2008.
- 26 Sydeman, W. J., Brodeur, R. D., Grimes, C. B., Bychkov, A. S., and McKinnell, S.: Marine  
27 habitat "hotspots" and their use by migratory species and top predators in the North  
28 Pacific Ocean: Introduction, *Deep-Sea Res. II*, 53, 247–249, doi:  
29 10.1016/j.dsr2.2006.03.001, 2006.

- 1 Tasker, M. L., Jones, P. H., Dixon, T., and Blake, B. F.: Counting seabirds at sea from ships:  
2 a review of methods employed and a suggestion for a standardized approach, *Auk*,  
3 101, 567–577, 1984.
- 4 Timofeev, S. F.: Discovery of eggs and larvae of *Thysanoessa raschii* (M. Sars, 1846)  
5 (Euphausiacea) in the Laptev Sea: proof of euphausiids spawning on the shelf of the  
6 Arctic Ocean, *Crustaceana*, 73, 1089–1094, doi: 10.1163/156854000505092, 2000.
- 7 Toge, K., Yamashita, R., Kazama, K., Fukuwaka, M., Yamamura, O., and Watanuki, Y.: The  
8 relationship between pink salmon biomass and the body condition of short-tailed  
9 shearwaters in the Bering Sea: can fish compete with seabirds?, *Proc. R. Soc. Lond.*  
10 *B.*, 278, 2584–2590, doi: 10.1098/rspb.2010.2345, 2011.
- 11 Tsujii, K., Otsuki, M., Akamatsu, T., Matsuo, I., Amakasu, K., Kitamura, M., Kikuchi, T.,  
12 Miyashita, K., and Mitani, Y. The migration of fin whales into the southern Chukchi  
13 Sea as monitored with passive acoustics, *ICES Journal of Marine Science*, doi:  
14 10.1093/icesjms/fsv271, 2016.
- 15 Vlietstra, L. S., Coyle, K. O., Kachel, N. B., and Hunt, G. L.: Tidal front affects the size of  
16 prey used by a top marine predator, the short-tailed shearwater (*Puffinus tenuirostris*),  
17 *Fish. Oceanogr.*, 14, 196–211, doi: 10.1111/j.1365-2419.2005.00369.x, 2005.
- 18 Watkins, J.: *Sampling Krill: Krill Biology, Ecology and Fisheries*, Blackwell Science Ltd  
19 edited by Inigo Everson, 372 pp., 2000.
- 20 Wong, S. N. P., Gjerdrum, C., Morgan, K. H., and Mallory, M. L.: Hotspots in cold seas: The  
21 composition, distribution, and abundance of marine birds in the North American  
22 Arctic, *J. Geophys. Res.*, 119, 1691–1705, doi: 10.1002/2013jc009198, 2014.
- 23 Woodgate, R. A., Aagaard, K., and Weingartner, T. J.: Interannual changes in the Bering  
24 Strait fluxes of volume, heat and freshwater between 1991 and 2004, *Geophys. Res.*  
25 *Lett.*, 33, doi: 10.1029/2006gl026931, 2006.
- 26 Woodgate, R. A., Weingartner, T., and Lindsay, R.: The 2007 Bering Strait oceanic heat flux  
27 and anomalous Arctic sea-ice retreat, *Geophys. Res. Lett.*, 37, doi:  
28 10.1029/2009gl041621, 2010.
- 29 Yamamoto, T., Hoshina, K., Nishizawa, B., Meathrel, C. E., Phillips, R. A., and Watanuki,  
30 Y.: Annual and seasonal movements of migrating short-tailed shearwaters reflect

1 environmental variation in sub-Arctic and Arctic waters, *Mar. Biol.*, 162, 413–424,  
2 doi: 10.1007/s00227-014-2589-1, 2015.

3 Zuur, A. F., Ieno, E. N., Walker, N. J., Saveliev, A. A. and Smith, G. M.: Mixed effects  
4 models and extensions in ecology with R, Springer, New York, 574 pp., 2009.

5 van Franeker, J. A.: A comparison of methods for counting seabirds at sea in the Southern  
6 Ocean, *J. Field Ornithol.*, 65, 96–108, 1994

7

1 **Figure captions**

2 **Figure 1.** Study area and densities (birds km<sup>-2</sup> in each 50-km<sup>2</sup> grid) of short-tailed  
3 shearwaters (*Ardenna tenuirostris*) in fall 2012 (a) and summer 2013 (b). Solid gray  
4 lines indicate the 200-m-depth contours.

5 **Figure 2.** Seasonal changes in the density (birds km<sup>-2</sup>) of short-tailed shearwaters (*Ardenna*  
6 *tenuirostris*) in the Bering Sea (a) and Chukchi Sea (b). Densities were estimated  
7 using a generalized additive model (GAM). Gray shading indicates 95% confidence  
8 limits and thick marks on the *x*-axis indicate the locations of data points. Significance  
9 levels (*p*-values) are shown on each plot.

10 **Figure 3.** Densities (ind. m<sup>-2</sup>) of krill in summer 2007 (a), 2008 (b), and 2013 (c) in the  
11 Bering Sea, and fall 2012 (d) and summer 2013 (e) in the Chukchi Sea. Solid gray  
12 lines indicate the 200-m-depth contours.

13 **Figure 4.** Regional changes (southern shelf <60°N, northern shelf >60°N) in the total length  
14 (from the tip of the rostrum to the posterior end of the telson) of krill in the Bering  
15 Sea during summer 2007, 2008, and 2013 (pooled across years) (a), and in the  
16 Chukchi Sea during fall 2012 and summer 2013 (b).

17

1 **Table 1.** Summary of vessel-based short-tailed shearwater (*Ardenna tenuirostris*; STSH)  
 2 surveys. The number of 50-km<sup>2</sup> grids with and without STSH, and the density of  
 3 STSH (birds km<sup>-2</sup> in each 50-km grid; mean ± SD (min.– max.)) are shown.

Year	Area	Period	Season	Survey period (days)	No. grids with STSH	No. grids without STSH	Density of STSH (ind. km <sup>-2</sup> )	Ship speed (kt)
2012	Bering	9 Sep. - 10 Oct.	Fall	12	52	8	16.1 ± 38.4 (0 - 200.0)	11.6
2012	Chukchi	13 Sep. - 4 Oct.	Fall	21	42	50	18.9 ± 91.1 (0 - 778.2)	11.5
2013	Bering	19 June - 28 July	Summer	24	84	62	59.6 ± 472.5 (0 - 5601.1)	10.5
2013	Chukchi	8 July - 18 July	Summer	11	0	66	0	9.3

4  
5  
6



1 **Table 2.** Summary of krill surveys showing the abundance, total length, and estimated wet  
 2 weight of krill in each sampling area. Values are means  $\pm$  SD (min.– max.), and  
 3 sample sizes are also shown.

Year	Area	Period	No. stations with krill	No. stations without krill	Krill abundance (ind. m <sup>-2</sup> )	Total length of krill (mm)	Wet weight (mg ind. <sup>-1</sup> )
2007	Bering	20 Jul-31 Jul	18	9	176.0 $\pm$ 270.3 (0-1157.2)	5.5 $\pm$ 4.0 (0.6-25.5), n=75	6.2 $\pm$ 24.1 (0.0-159.2), n=75
2008	Bering	24 Jun-2 Jul	27	6	929.1 $\pm$ 1227.1 (0-4334.3)	3.0 $\pm$ 1.9 (0.5-18.0), n=343	0.8 $\pm$ 4.9 (0.0-55.6), n=343
2012	Chukchi	13 Sep-3 Oct	19	31	132.7 $\pm$ 304.4 (0-1845.3)	9.6 $\pm$ 5.0 (4.0-25.0), n=106	16.5 $\pm$ 24.9 (0.6-150.0), n=106
2013	Bering	22 Jun-7 Jul	24	10	3059.5 $\pm$ 5137.7 (0-20785.0)	3.3 $\pm$ 1.5 (0.7-21.0), n=1253	0.7 $\pm$ 3.9 (0.0-88.6), n=1253
2013	Chukchi	8 Jul-17 Jul	18	9	7366.4 $\pm$ 16419.9 (0-69949.0)	1.9 $\pm$ 1.2 (0.5-16.0), n=884	0.2 $\pm$ 2.3 (0.0-39.0), n=884

4  
5  
6

1 **Table 3.** The five better-fitting models explaining the occurrence (presence/absence) of short-  
 2 tailed shearwaters (*Ardenna tenuirostris*) in fall 2012 and summer 2013. The  
 3 occurrence and size of krill were categorized as “absent,” “small,” and “large.”  
 4 Season was categorized as “summer” and “fall.” Parameter coefficients and standard  
 5 errors (SE), Akaike’s information criterion (AIC), and the difference in AIC are  
 6 shown. Only competing models ( $\Delta\text{AIC} \leq 2$ ) are presented. SST: sea surface  
 7 temperature; Chla: sea surface chlorophyll *a* concentration. Plus marks indicate the  
 8 categorical variables that were included in the model.

Model ID.	SST	Chla	Bottom Slope	Krill	Season	AIC	$\Delta\text{AIC}$
1	+0.54 (0.24)				+	62.2	0.00
2	+0.47 (0.24)		+0.54 (0.61)		+	63.4	1.20
3	+0.62 (0.24)			+	+	63.5	1.30
4	+0.64 (0.25)	-2.32 (1.90)		+	+	63.9	1.65
5	+0.54 (0.24)	-0.92 (1.65)			+	63.9	1.68

9  
 10  
 11

1 **Table 4.** Differences in the explanatory variables between the 50-km<sup>2</sup> grids with and without  
 2 short-tailed shearwaters (*Ardenna tenuirostris*) during fall (September) 2012 in the  
 3 Chukchi Sea and summer (June–July) 2013 in the Bering and Chukchi Seas. Values  
 4 are means  $\pm$  SD, with sample sizes in parentheses. The results of Mann-Whitney *U*  
 5 tests are also shown.

		Presence	Absence	<i>U</i> -test
SST (°C)	2012 (Fall)	2.65 $\pm$ 1.12 (28)	1.59 $\pm$ 1.83 (11)	<i>U</i> = 253, <i>p</i> < 0.05
	2013 (Summer)	8.80 $\pm$ 0.97 (15)	6.77 $\pm$ 2.35 (46)	<i>U</i> = 527, <i>p</i> < 0.05
Chla (mg m <sup>-3</sup> )	2012 (Fall)	2.14 $\pm$ 0.81 (19)	1.79 $\pm$ 1.92 (2)	<i>U</i> = 20, <i>p</i> = 0.95
	2013 (Summer)	0.64 $\pm$ 0.44 (10)	0.97 $\pm$ 0.93 (42)	<i>U</i> = 137, <i>p</i> = 0.09
Slope (°)	2012 (Fall)	0.13 $\pm$ 0.31 (31)	0.63 $\pm$ 0.52 (19)	<i>U</i> = 105, <i>p</i> < 0.05
	2013 (Summer)	0.21 $\pm$ 0.50 (15)	0.07 $\pm$ 0.24 (46)	<i>U</i> = 480, <i>p</i> < 0.05

6  
7  
8

1 **Table 5.** The occurrence (and percentage occurrence) of short-tailed shearwaters (*Ardenna*  
 2 *tenuirostris*; STSH) in 50-km<sup>2</sup> grids with and without large krill (>8.0 mm total  
 3 length) in fall (September) 2012 and summer (June–July) 2013. The results of  
 4 Fisher’s exact tests are also shown.

Year	Season	Grid type	Occurrence of STSH		Total	Fisher's exact test
			Presence	Absence		
2012	Fall	with large krill	14 (87.5)	2 (12.5)	16 (100)	$p < 0.05$
		without large krill	17 (50)	17 (50)	34 (100)	
2013	Summer	with large krill	4 (33.3)	8 (66.7)	12 (100)	$p = 0.46$
		without large krill	11 (22.4)	38 (77.6)	49 (100)	

5  
 6  
 7

1 **Table 6.** Relationship between the density of short-tailed shearwaters (*Ardenna tenuirostris*;  
 2 STSH) (individuals km<sup>-2</sup> in each 50-km<sup>2</sup> grid) and the size of krill in fall  
 3 (September) 2012 and summer (June–July) 2013. Values are means ± SD with  
 4 sample sizes in parentheses. The results of Mann-Whitney *U* tests are also shown.

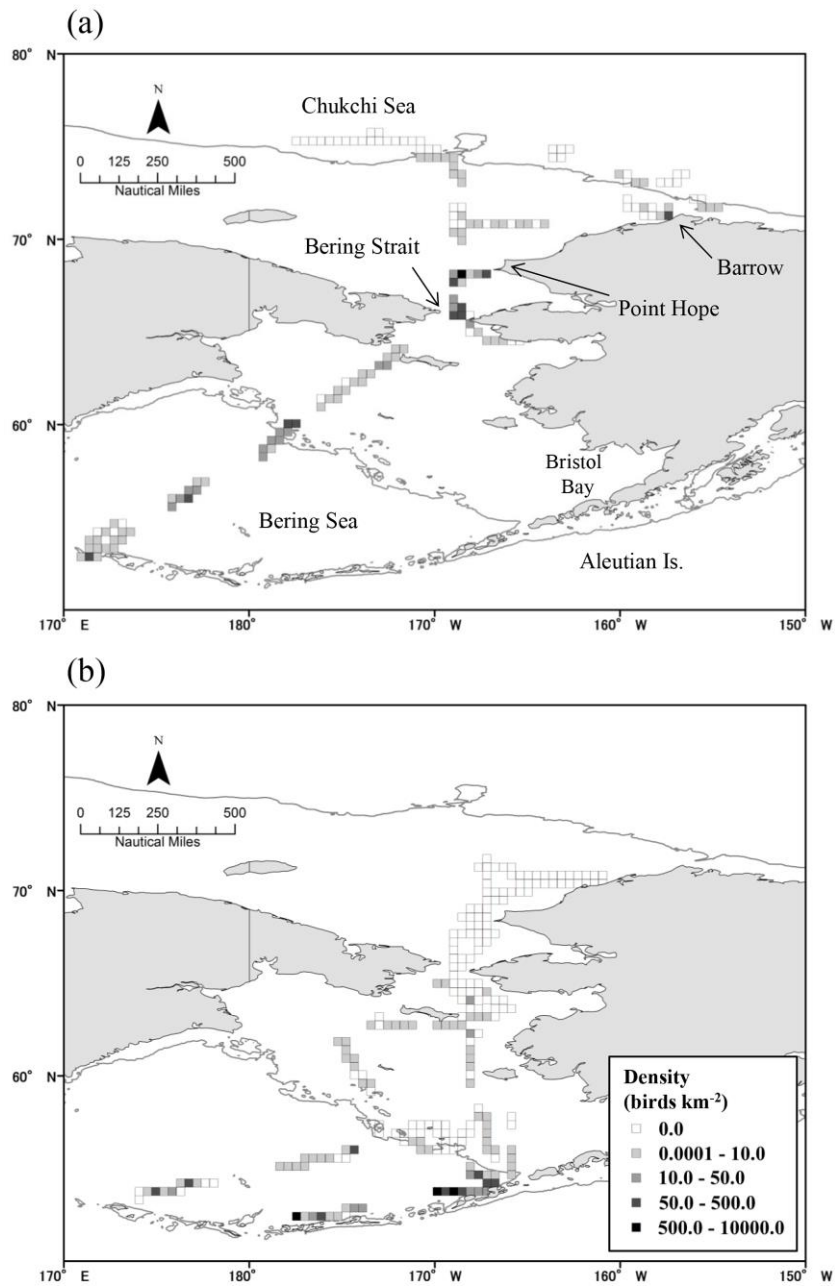
Year	Season	Density of STSH		<i>U</i> -test
		with large krill	without large krill	
2012	Fall	179.8 ± 311.1 (16)	52.2 ± 155.6 (34)	<i>U</i> = 384.5, <i>p</i> < 0.05
2013	Summer	1.7 ± 3.2 (12)	0.5 ± 1.5 (49)	<i>U</i> = 339.5, <i>p</i> = 0.28

5  
6

1 **Table 7.** Diet composition of short-tailed shearwaters (*Ardenna tenuirostris*) during the non-  
 2 breeding period.

Diet composition (%)								Sampling periods	Area	No. of birds	Unit	Reference
Fish	Squid	Krill	Copepods	Amphipods	Jellyfish	Crab larvae	Others					
5	0	83	0	0	0	11	0	July-Aug., 1973	Okhotsk Sea	18	Wet wight	Ogi et al., 1980
63	19	9	6	3	0	0	0	April-June, 1973-1977	North Pacific Ocean	125	Wet wight	Ogi et al., 1980
5	14	73	0	8	0	0	0	June-Aug., 1970-1978	Bering Sea (shelf and basin)	296	Wet wight	Ogi et al., 1980
19	13	73	3	9	11	7	17	June-Aug., 1981-1982	Bering Sea (shelf)	46	Frequency	Schneider et al., 1986
0	0	100	0	0	0	0	0	Aug., 1989	Bering Sea (shelf)	23	Wet wight	Hunt et al., 1996
31	0	56	8	0	0	5	0	May-Sep., 1997-1999	Bering Sea (shelf)	288	Volume	Hunt et al., 2002
21	12	57	0	0	0	0	0	July, 2003-2008	Being Sea (basin)	159	Wet wight	Toge et al., 2011

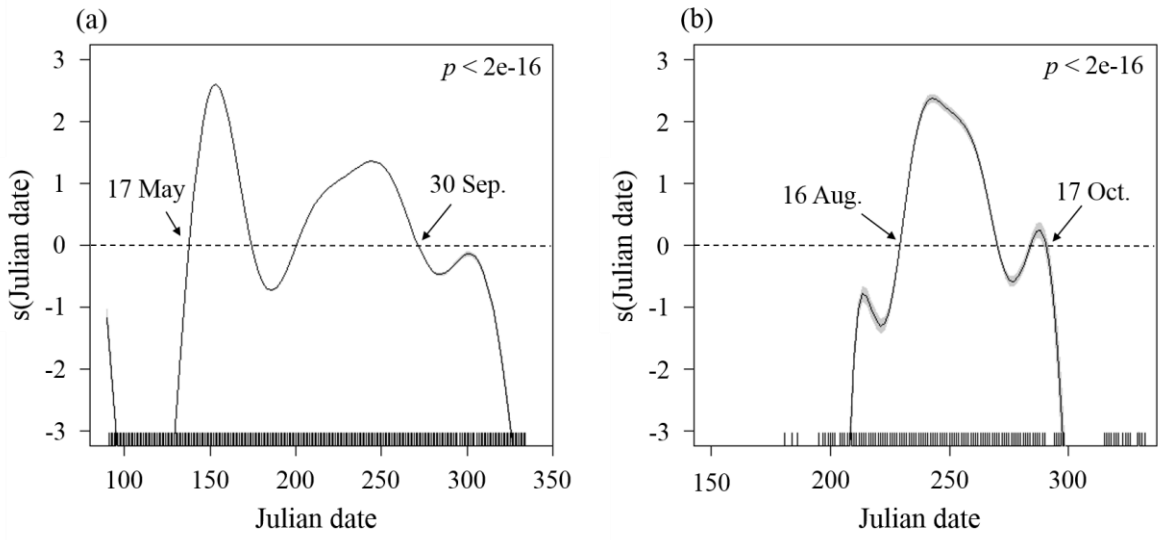
3  
4  
5



1

2

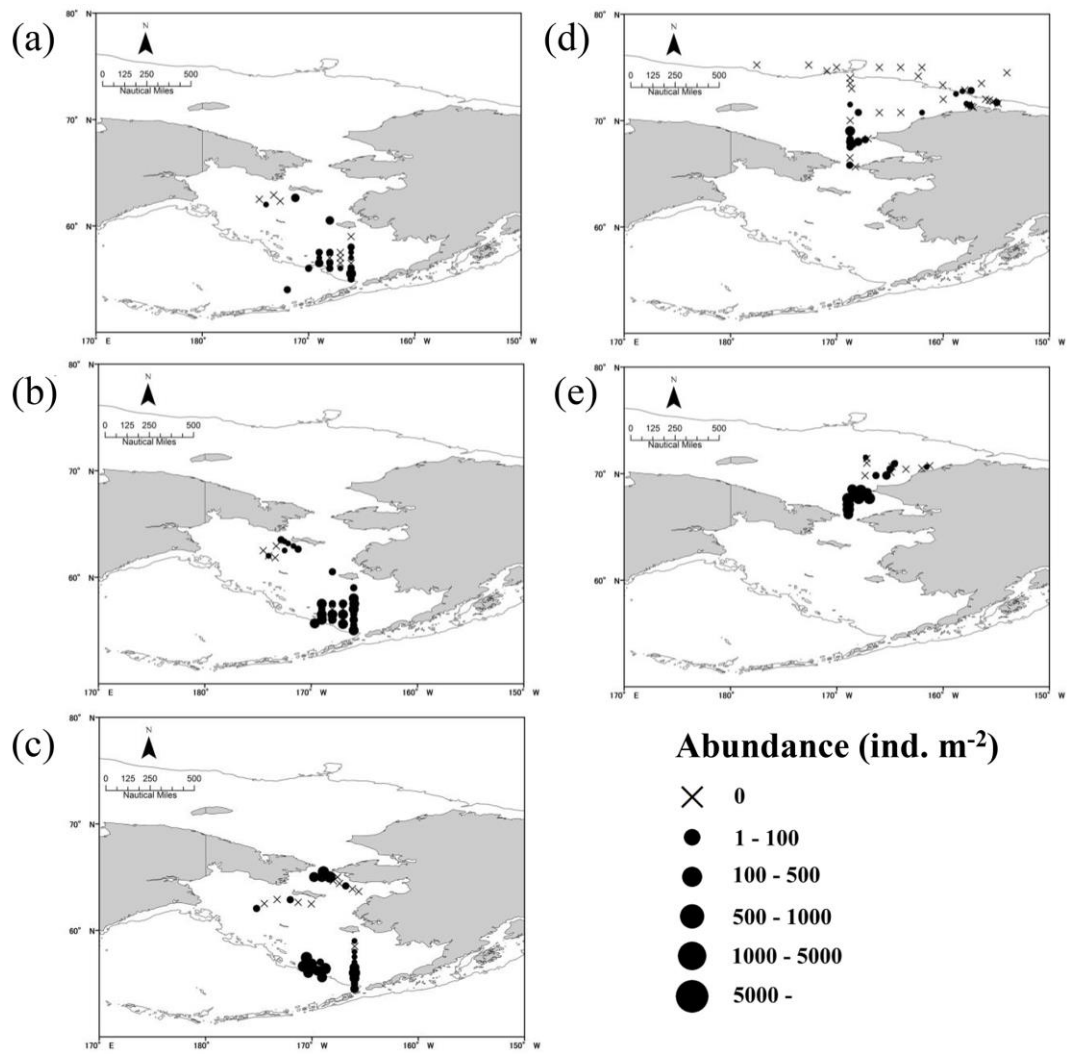
**Fig. 1**



1  
2  
3

**Fig. 2**

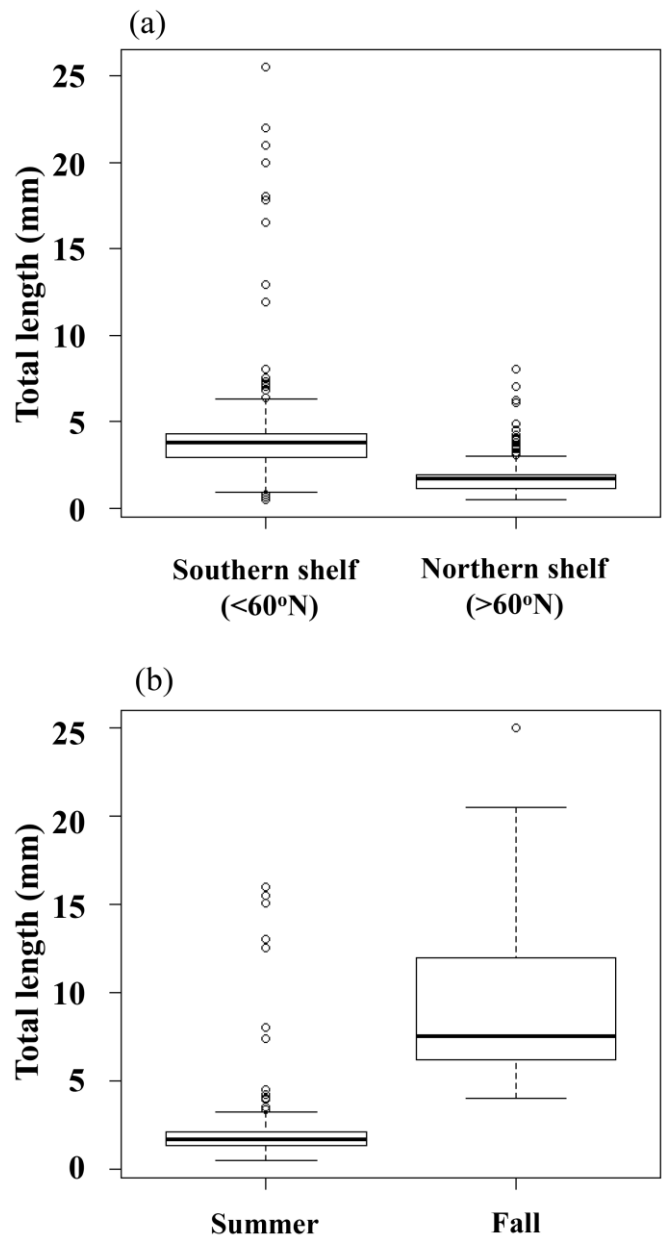




1

2

Fig. 3



1

2

**Fig. 4**