

Manuscript prepared for Biogeosciences Discuss.
with version 2015/04/24 7.83 Copernicus papers of the L^AT_EX class copernicus.cls.
Date: 11 February 2016

Apparent increase in coccolithophore abundance in the subtropical North Atlantic from 1990 to 2014

K. M. Krumhardt¹, N. S. Lovenduski², N. M. Freeman², and N. R. Bates³

¹Environmental Studies Program and Institute of Arctic and Alpine Research, University of Colorado Boulder, Boulder, Colorado, USA

²Department of Atmospheric and Oceanic Sciences and Institute of Arctic and Alpine Research, University of Colorado Boulder, Boulder, Colorado, USA

³Bermuda Institute of Ocean Sciences, Bermuda

Correspondence to: K. M. Krumhardt (kristen.krumhardt@colorado.edu)

Abstract

As environmental conditions evolve with rapidly increasing atmospheric CO₂, biological communities will change as species reorient their distributions, adapt, or alter their abundance. In the surface ocean, dissolved inorganic carbon (DIC) has been increasing over the past several decades as anthropogenic CO₂ dissolves into seawater, causing acidification (decreases in pH and carbonate ion concentration). Calcifying phytoplankton, such as coccolithophores, are thought to be especially vulnerable to ocean acidification. How coccolithophores will respond to increasing carbon input has been a subject of much speculation and inspired numerous laboratory and mesocosm experiments, but how they are currently responding in situ is less well documented. In this study, we use coccolithophore (Haptophyte) pigment data collected at the Bermuda Atlantic Time-series Study (BATS) site together with satellite estimates (1998–2014) of surface chlorophyll and particulate inorganic carbon (PIC) as a proxy for coccolithophore abundance to show that coccolithophore populations in the North Atlantic Subtropical Gyre have been increasing significantly over the past two decades. Over 1991–2012, we observe a 37% increase in euphotic zone-integrated coccolithophore pigment abundance at BATS, though we note that this is sensitive to the period being analyzed. We further demonstrate that variability in coccolithophore chlorophyll *a* here is positively correlated with variability in nitrate and DIC (and especially the bicarbonate ion) in the upper 30 m of the water column. Previous studies have suggested that coccolithophore photosynthesis may benefit from increasing CO₂, but calcification may eventually be hindered by low pH_T (< 7.7). Given that DIC has been increasing at BATS by ~ 1.4 μmol kg⁻¹ yr⁻¹ over 1991 to 2012, we speculate that coccolithophore photosynthesis and perhaps calcification may have increased in response to anthropogenic CO₂ input.

1 Introduction

Coccolithophores are the most abundant type of calcifying phytoplankton in the ocean. Belonging to the phytoplankton group known as haptophytes, coccolithophores generate a substantial fraction of the primary production in many diverse marine environments from cold, sub-polar waters to warm, tropical waters (Thierstein and Young, 2004). Coccolithophores produce calcium carbonate (CaCO_3) shells that sink to the deep ocean forming chalk deposits and thus are important for global biogeochemical cycling of carbon and climate feedbacks. Further, coccolithophores comprise the base of many marine food webs and are widespread throughout the world ocean (Boyd et al., 2015). Changes in coccolithophore abundance could therefore have far-reaching effects from the ecosystem level to global carbon cycling (Boyd et al., 2015).

Ocean acidification from the gradual oceanic absorption of anthropogenic CO_2 has been projected to impact future coccolithophore populations, possibly disrupting the formation and/or dissolution of their CaCO_3 shells (e.g., Doney et al., 2009; Mackey et al., 2015). As CO_2 is absorbed from the atmosphere, it reacts with water releasing hydrogen ions (H^+) and increasing dissolved inorganic carbon (DIC). Excess H^+ ions and more DIC in the water column lead to a decrease in the carbonate ion (CO_3^{2-}) concentration in the ocean (for an overview of CO_2 -carbonate chemistry see Bates et al., 2014). Lower CO_3^{2-} concentrations decrease the saturation state of CaCO_3 and could result in lower calcification rates in coccolithophores. Recently, Bach (2015) proposed that a substrate-inhibitor ratio may be a better indicator of potential biocalcification rates. Bicarbonate ions (HCO_3^-) are the substrate for calcification in most calcifying organisms, but high concentrations of H^+ ions can limit calcification. Therefore, a decreasing $[\text{HCO}_3^-]/[\text{H}^+]$ ratio may eventually hinder calcification, rather than low CO_3^{2-} concentrations. Even so, other factors (e.g., nutrient and light limitation) could exert a stronger control on calcification than carbonate chemistry (Bach et al., 2015). A CO_3^{2-} saturation state of less than one would still, however, cause the dissolution of CaCO_3 shells. Speculation of how coccolithophores will respond to increasing DIC and acidification (i.e., the balance between CaCO_3 production vs. dissolution) has been the

subject of many laboratory and mesocosm studies (e.g., Iglesias-Rodriguez et al., 2008; Schlüter et al., 2014; Riebesell et al., 2007). These, however, have yielded mixed results, highlighting the complexity of biological responses to these changing oceanic conditions.

Numerous laboratory studies indicate that acidification of oceanic waters leads to a decrease in calcification rates for coccolithophores (Riebesell et al., 2000; Sciandra et al., 2003; Delille et al., 2005). However, some recent studies show that coccolithophores increase calcification in response to increasing CO₂ or restore calcification rates after an adaptation period under increasing CO₂ and warming (e.g., Iglesias-Rodriguez et al., 2008; Schlüter et al., 2014). Indeed, responses to elevated CO₂ by different species of coccolithophores vary in all directions, making the extrapolation of these laboratory results to natural populations challenging. How calcifying phytoplankton will react to continually increasing CO₂ may vary from region to region in the world's oceans, depending on phytoplankton assemblages (e.g., the dominant species or strain of coccolithophore), available nutrients, and temperature (Sett et al., 2014). Coccolithophore responses to ocean acidification may be species specific or even vary within species (different *morphotype* responses, see Beaufort et al., 2011).

Differences in physiological mechanisms could play an important role in determining relative phytoplankton abundances under increasing DIC and acidification. For instance, nutrient uptake rates vary between phytoplankton species depending on the affinity of the transport mechanism for its substrate (e.g., phosphate ion). Laboratory experiments on the widespread coccolithophore *Emiliania huxleyi* have shown this species to have an efficient phosphate uptake system with a low half-saturation constant for phosphate, making it a superior competitor in phosphate-limited oceanic regions (Riegman et al., 2000). These results have been supported by field data from the subtropical Pacific Ocean (Cortés et al., 2001) and through a combination of field data and modeling in the NE Atlantic Ocean (Tyrrell and Taylor, 1996). For inorganic carbon uptake for photosynthesis, however, *E. huxleyi* displays a relatively high half-saturation constant compared to other phytoplankton (Riebesell, 2004; Rost et al., 2003), indicating that coccolithophores may benefit from increasing atmospheric CO₂ absorbed into the ocean. However, there are few in situ or observational

studies of coccolithophore responses to increasing anthropogenic carbon (e.g., Feng et al., 2009; Freeman and Lovenduski, 2015).

To test the hypothesis that coccolithophores may be responding positively to additional CO₂ inputs, we employed data from the Bermuda Atlantic Time-Series (BATS), a long running oceanic time series in the North Atlantic Subtropical Gyre (Sargasso Sea) located at approximately 31.7° N, 64.2° W (Fig. 1). At this site, twice-monthly and monthly hydrographic and biogeochemical measurements have been made since the late 1980s (Fig. 1; Lomas et al., 2010; Bates et al., 2014). The BATS environment is characterized by Ekman down-welling and convergence, which results in an oligotrophic setting (Sarmiento and Gruber, 2006). While this area displays strong summer stratification (mixed layer depth ~ 35 m), seasonal overturning results in a deep mixing of the water column during winter (mixed layer depth ~ 250 m; Steinberg et al., 2001; Lomas et al., 2013). Though oligotrophic oceanic gyres have relatively low productivity compared to other areas of the oceans, they cover vast areas and thus are important on a global scale (Sarmiento and Gruber, 2006). Furthermore, the strong summer stratification experienced in these regions could be indicative of future trends, as increased stratification of the water column is projected with global warming (Gruber, 2011; Giovannoni and Vergin, 2012; Cabré et al., 2015). Thus, understanding phytoplankton dynamics subject to these environmental conditions is essential for accurately forecasting future ocean biogeochemistry.

Pigment analyses have been used to study the distribution, relative abundance, and assemblages of natural phytoplankton populations. Using high performance liquid chromatography (HPLC) to identify the presence and concentration of signature pigments, researchers can obtain relative components of chlorophyll *a* (Chl *a*) from phytoplankton (Letelier et al., 1993; Wright and van den Enden, 2000; Van Lenning et al., 2004). Coccolithophores, a haptophyte algae, are identified using signature pigments for haptophytes (mainly 19'-hexanoyloxyfucoxanthin), of which coccolithophores are likely the main component (Dandonneau et al., 2006), particularly at BATS (see Methods, Haidar and Thierstein, 2001; Steinberg et al., 2001; Lomas and Bates, 2004). While HPLC pigment analyses can pro-

vide a site-specific record of phytoplankton relative abundance, satellite-based records can provide information at larger spatial scales.

Ocean color remote sensing, through the Sea-viewing Wide Field-of-view Sensor (SeaWiFS; 1997–2010) and the Moderate Resolution Imaging Spectroradiometer (MODIS) Aqua (2002-present) platforms, has revolutionized our understanding of the ecological processes of the upper ocean on a variety of spatial and temporal scales. Satellite-estimated Chl *a* concentration has been used as a proxy for phytoplankton abundance and biomass since 1978. While most phytoplankton are not very effective light scatterers relative to their surroundings, coccolithophores produce CaCO₃ shells that are highly reflective. An understanding of coccolithophore-specific water-leaving radiances and the calcite-specific backscattering cross section allows for the concentration of coccolithophore particulate inorganic carbon (PIC) to be estimated via remote sensing (Gordon et al., 2001; Balch et al., 2005; Balch and Utgoff, 2008). Therefore, satellite estimates of PIC provide a qualitative proxy for coccolithophore abundance.

In this study, we combine pigment data from BATS along with PIC and Chl *a* measurements from the satellite record to assess recent trends in phytoplankton dynamics in the North Atlantic subtropical gyre, with a focus on coccolithophores. This data suggests that coccolithophore populations in the North Atlantic are increasing. Correlations indicate that they may be responding positively to increasing inorganic carbon from anthropogenic inputs in the upper mixed layer.

2 Methods

2.1 Data sources

Pigment measurements were obtained from the BATS website (<http://bats.bios.edu>), re-sampled at regular monthly intervals using a linear interpolation between measurements, and converted to relative Chl *a* components from different phytoplankton groups as in Letelier et al. (1993). Briefly, each phytoplankton group is associated with signature pigments

that have relatively constant ratios with total Chl *a*. Signature pigment concentrations from each phytoplankton group, obtained via HPLC analysis, were converted to Chl *a* concentration using these ratios. This method has been verified in the North Pacific (Letelier et al., 1993) and the North Atlantic subtropical gyres (Andersen et al., 1996). We focused on measurements from the upper water column (top 30 m), consistently within the mixed layer (Steinberg et al., 2001; Lomas et al., 2013), but also examined trends and variability integrated over the depth of the euphotic zone (~140 m) to verify congruence with the top 30 m of the water column.

Haptophyte pigments specifically were calculated using 19'-hexanoyloxyfucoxanthin (19'-hex) pigments and 19'-butanoyloxyfucoxanthin (19'-but). Coccolithophores and other prymnesiophytes contain 19'-hex and negligible amounts of 19'-but, while some other phytoplankton (e.g., chrysophytes and *Phaeocystis*) contain significant amounts of both 19'-hex and 19'-but (Zapata et al., 2004; Letelier et al., 1993). Based on the relative concentrations of 19'-but to 19'-hex measured at BATS, we subtracted out the phytoplankton pigment contribution that contains both 19'-hex and 19'-but, as in Letelier et al. (1993), and multiply the remaining 19'-hex concentration by a 19'-hex to Chl *a* ratio found in calcifying haptophytes (Letelier et al., 1993). The result is the haptophyte chlorophyll *a* fraction, which in this study, we assume to be mainly from coccolithophores. Particularly at BATS, the dominant haptophyte group has been reported to be coccolithophores by, e.g., Lomas and Bates (2004) and Steinberg et al. (2001), but these references offer no direct evidence for this assumption. We did, however, find a significant correlation ($p < 0.0000001$, $r^2 = 0.69$) between coccolithophore cell counts published in Haidar and Thierstein (2001) and calculated Chl *a* from haptophytes at BATS (Figure S1). More generally, Dandonneau et al. (2006) report that coccolithophores often dominate the haptophyte community in open ocean environments, such as BATS.

In order to explore whether phytoplankton population dynamics are driven by carbonate chemistry parameters, we used the Mocsy Fortran 90 package (Orr and Epitalon, 2015) to solve the full carbonate chemistry system using available measurements at BATS (Bates et al., 2012). Using dissociation constants from Lueker et al. (2000), carbonate chemistry

output from Mocsy agrees with other current carbonate system packages available (Orr et al., 2014). Input includes average concentrations of total alkalinity and DIC along with mean temperature and salinity in the top 30 m. Output includes pH_T , CO_3^{2-} concentration, bicarbonate (HCO_3^-) concentration, and aqueous CO_2 + carbonic acid ($\text{CO}_{2(\text{aq})} + \text{H}_2\text{CO}_3 = \text{H}_2\text{CO}_3^*$).

We used satellite observations of level 3, monthly binned PIC and Chl *a* from the Sea-viewing Wide Field-of-view Sensor (SeaWiFS; 1997–2007; limited data availability after 2007) and MODIS Aqua (2003–2014) on a 9 km (5 min) grid obtained from the NASA Ocean Colour distributed archive (<http://oceancolor.gsfc.nasa.gov/>). We calculated the mean satellite-derived PIC concentration in the BATS region that contains > 95% of pigment measurements (Fig. 1a).

2.2 Statistical analyses

2.2.1 Correlations

In order to identify correlations of phytoplankton pigment abundance across different species, with local environmental variables, and with satellite products, we performed correlation analysis on linearly detrended and deseasonalized (1 year boxcar smoothing) anomalies. Correlations between the main Chl *a* phytoplankton fractions present at BATS (*Prochlorococcus*, *Synechococcus*, haptophytes, and diatoms) were calculated for a variety of oceanic measurements hypothesized to influence phytoplankton abundance: DIC, alkalinity, inorganic nitrogen concentrations, temperature, salinity, and carbonate chemistry variables (see above section on carbonate chemistry). We also explored possible correlations between Chl *a* phytoplankton fractions and the mixed layer depth (MLD). We used two methods for calculating MLD. $\text{MLD}_{\text{sigma}}$ was determined to be where the potential density anomalies (sigma-theta) at depth displayed a $> 0.125 \text{ kg m}^{-3}$ difference from surface waters, while MLD_{temp} was calculated as the location of 0.5°C change in temperature from the surface (Monterey and Levitus, 1997). Mean density and temperature measurements within the top 10 m of the water column were used for “surface” values. We also tested correla-

tions with the monthly mean North Atlantic Oscillation (NAO) index, obtained from NOAA National Weather Service Climate Prediction Center (<http://www.cpc.ncep.noaa.gov/data/teledoc/nao.shtml>).

2.2.2 Trends

5 In order to quantify temporal trends in pigment concentrations, biogeochemical measurements, and satellite data, we calculated the slope of a straight line that best fit the time-series in a least-squares sense. When comparing trends in pigments with trends in biogeochemical measurements at BATS, we used the average values over the top 30 m of the water column. Satellite Chl *a* and PIC trend analysis was performed on a grid cell basis.

10 3 Results

3.1 Chl a_{hapto} at BATS

Chl *a* from haptophytes (Chl a_{hapto} ; assumed to be primarily from coccolithophores, see Methods) is present throughout the euphotic zone at BATS and displays a pronounced seasonal cycle. Concentrations of Chl a_{hapto} surpassed $100 \mu\text{g m}^{-3}$ during periods of high abundance, with $\sim 35 \mu\text{g Chl } a_{\text{hapto}} \text{ m}^{-3}$ during periods of relatively low abundance, such as between 2000 and 2004 (Fig. 1b). The bulk of haptophyte pigments occurred around $\sim 80\text{m}$ of depth, but pigments were also abundant in the upper 30 m, especially during spring. Haptophyte pigment concentration is low below depths of $\sim 140\text{m}$. During the mid-90s and last six years of the dataset, Chl a_{hapto} was more concentrated, especially in the upper 30 m of the water column (Fig. 1b).

Haptophytes comprise roughly 30 % of the Chl *a* in the upper 30 m of the water column at BATS (Fig. 2), a percentage that persists from the start of measurements (~ 1990) to the end of our dataset (~ 2012). However, a period of low haptophyte abundance occurred between 2000 and 2004, reducing their relative contribution to Chl *a* to 15 %. *Synechococcus* Chl *a* is variable, ranging from 20 to 70 % of the total Chl *a* in the upper 30 m. Unfortunately,

signature pigment concentrations necessary to calculate *Synechococcus* Chl *a* were missing from the BATS dataset at the beginning of our time-series as well as during a five-year segment from ~ 1997 to ~ 2002 (shown as hatched area in Fig. 2). In contrast to generally high *Synechococcus* and haptophyte pigment abundance, *Prochlorococcus* and diatom pigments contribute relatively small fractions to the total Chl *a* in the upper 30 m. Correlations with potentially influential oceanographic drivers can aid to explain variable abundance of different phytoplankton Chl *a* fractions in these surface waters.

3.2 Correlations of Chl *a* components with oceanographic measurements at BATS

Correlation coefficients between detrended, deseasonalized anomalies of Chl a_{hapto} , Chl *a* from *Synechococcus* (Chl a_{syn}), Chl *a* from *Prochlorococcus* (Chl a_{pro}), and Chl *a* from diatoms (Chl a_{diatoms}) and anomalies in other oceanographic measurements/indices are presented in Fig. 3. Chl a_{hapto} shows strong positive correlations with DIC and HCO_3^- (explaining nearly 20% of the variability). Chl a_{pro} showed similar, but somewhat weaker, correlations with DIC and HCO_3^- . Conversely, Chl a_{syn} displayed a strong negative correlation with DIC and HCO_3^- (Fig. 3). All phytoplankton pigment groups, except *Synechococcus*, were positively correlated with nitrate (NO_3^-) variability (measurements also include nitrite, NO_2^- ; $\text{NO}_3^- + \text{NO}_2^-$ is referred to hereinafter as NO_3^-). CO_3^{2-} concentration, the saturation state of aragonite (Ω_{arag}), and temperature were negatively correlated with Chl a_{hapto} , opposite to Chl a_{syn} . Indeed, *Synechococcus* and haptophyte pigments display inverse correlations for nearly every variable tested, including temperature (Fig. 3).

Temperature is negatively correlated with Chl a_{hapto} (as well as Chl a_{pro} and Chl a_{diatoms}) and positively correlated with Chl a_{syn} (Fig. 3). Further, when the North Atlantic Oscillation (NAO) index is in a positive phase, temperatures over this region of the North Atlantic are generally warmer (Visbeck et al., 2001). Therefore, in line with the temperature correlations, the NAO index is negatively correlated with Chl a_{hapto} , opposite again to Chl a_{syn} . Mixed layer depth (MLD), an indicator of both temperature and nutrient availability, shows corresponding correlations with Chl *a* components. When the MLD is deeper, there is more

Chl a_{hapto} and less Chl a_{syn} . Both methods of calculating MLD (MLD_{temp} and MLD_{sigma}) showed similar correlations (Fig. 3).

3.3 Fluctuations in chlorophyll a from different phytoplankton groups

Haptophyte and *Synechococcus* pigments generally show opposing correlations with the variables tested (Fig. 3). This is supported by the opposing dominance of either *Synechococcus* or haptophyte Chl a throughout the timeseries (Fig. 4). Indeed Chl a_{hapto} and Chl a_{syn} show a significant negative correlation ($p < 0.00001$). During periods of low haptophyte pigment abundance (e.g., 2000–2004), *Synechococcus* pigments dominate the water column. Later in the time-series, however, *Synechococcus* pigments decline and haptophyte pigments increase. *Prochlorococcus* pigments (mostly low-light *Prochlorococcus*, see Discussion) at BATS reside mostly in the deep chlorophyll maximum at ~ 100 m of depth and are a relatively minor component of the Chl a in the upper 30 m of the euphotic zone. Diatom presence, usually associated with cold, high nutrient environments, is sporadic and generally low in this oligotrophic oceanic region of the subtropical North Atlantic, according to their signature pigments (Fig. 4).

In general, pigment analyses indicate that *Synechococcus* and haptophytes are the most abundant phytoplankton groups at BATS (Figs. 2 and 4). However, the category classified as “other” (includes chrysophytes, dinoflagellates, prasinophytes, among others) in Fig. 3 comprises a large portion ($> 30\%$) of the phytoplankton biomass during certain periods, indicating certain conditions may favor neither *Synechococcus* nor haptophytes. The opposing correlations *Synechococcus* and haptophyte pigments exhibit with DIC, HCO_3^- , CO_3^{2-} , NO_3^- and temperature could lead to interesting trends in phytoplankton abundance in an ocean increasingly influenced by anthropogenic climate change.

3.4 Trends in Chl a_{hapto} and total Chl a at BATS

A time-series of Chl a_{hapto} at BATS shows that haptophytes (mainly coccolithophores, see Methods), have been increasing significantly since 1990 ($p < 0.01$ for 30 m integral; $p <$

0.001 for 140 m integral; Fig. 5a, b). Mean concentration of Chl a_{hapto} in the upper 30 m of the water column has increased by $0.848 \mu\text{g m}^{-3} \text{yr}^{-1}$ (standard error = 0.332), corresponding to a 68% increase over the course of the BATS time-series (1991–2012; an overall increase of $17.8 \mu\text{g m}^{-3}$), while the 140 m integral of Chl a_{hapto} has increased by $0.103 \text{ mg m}^{-2} \text{yr}^{-1}$ (standard error = 0.0307) corresponding to a 37% increase (an overall increase of 2.2 mg m^{-2}). We assess the sensitivity of these trends to interannual variability by performing trend calculations for a range of start and end years over the time-series. The resulting trend pattern shown in Fig. 7a shows mostly positive trends in Chl a_{hapto} , except for end years in the 2000–2004 period. Total chlorophyll a (Chl a_{total}) also shows a significant positive trend over the time-series ($p < 0.05$ for 30 m integral; $p < 0.001$ for 140 m integral; Fig. 6; upper right corner of Fig. 7c). Figure 7c shows trends in Chl a_{total} for a range of start and end years, displaying a different pattern than that of the trends in the Chl a_{hapto} component of Chl a . For instance, for end years in the 2000–2004 period, Chl a_{total} shows positive trends (but nonsignificant), whereas Chl a_{hapto} shows significant negative trends (Fig. 7). Mean Chl a in the upper 30 m primarily exhibits negative trends in the later part of the time-series and most trends in Chl a are nonsignificant (Fig. 7c). Unfortunately, missing *Synechococcus* pigment data did not allow for long-term trend analysis of this group of phytoplankton (see hatched area in Fig. 2 and white area in Fig. 4).

In line with the results of our correlation analysis, the trends in HCO_3^- for various start and end years show a similar pattern to the trends in Chl a_{hapto} (Fig. 7b): mostly positive trends with slightly negative (but nonsignificant) trends in HCO_3^- concentration for end year in the 2000–2004 period, a low point in haptophyte pigments. Conversely, the trend pattern for the substrate-inhibitor ratio, $[\text{HCO}_3^-]/[\text{H}^+]$, is distinctly different from that of Chl a_{hapto} , exhibiting all negative trends (Fig. 7d). Trends in Chl a_{hapto} , assumed here to be mainly representative of coccolithophores (see Methods), can be further corroborated with particulate inorganic carbon (PIC) measurements from the satellite record.

3.5 Relating BATS pigment data to satellite products

Significant correlations were detected between Chl a_{hapto} (30 m integral) measured at BATS and PIC derived from each satellite. The SeaWiFS-derived PIC correlated somewhat better with Chl a_{hapto} than MODIS-derived PIC (SeaWiFS PIC-Chl a_{hapto} $p = 0.0075$, $r^2 = 0.19$ vs. MODIS PIC-Chl a_{hapto} $p = 0.050$, $r^2 = 0.12$). This difference is likely inherent in the different algorithms used to estimate PIC from each satellite (see following paragraph). Nevertheless, these correlations demonstrate correspondence between Chl a_{hapto} measurements and satellite PIC, both of which relate to relative coccolithophore abundance.

Two radiance-based PIC algorithms can be used to relate water-leaving radiance to calcite absorption and scattering properties: a two-band algorithm (Balch et al., 2005) and a three-band algorithm (Gordon et al., 2001). The North Atlantic subtropical gyre exhibits relatively low PIC concentrations year-round. During the SeaWiFS/MODIS overlap period (2003–2007), PIC estimated from the two satellites revealed stark differences (Fig. 5c), possibly explained by the differences in algorithm performance in this region (i.e., sensitivity to low/background PIC concentrations). The low correspondence between the two estimates of PIC prevented the generation of a single, merged PIC time-series. We therefore report trends in PIC separately over the respective satellite eras (Fig. 8).

Chl a measured at BATS (30 m integral) and Chl a derived from satellite were significantly correlated ($p < 0.01$, $r^2 = 0.16$). In this case, Chl a measured by satellite displayed good correspondence between the two satellite eras and could be merged into one time-series. Following the regression technique of Brown and Arrigo (2012), we generated one continuous record of Chl a from 1998 to 2014 by applying linear regression over the 2003–2007 SeaWiFS/MODIS overlap period to predict these variables from 2008 to 2014 (Fig. 6c).

3.6 Regional trends in satellite PIC and Chl a

Linear trends in PIC derived from satellite observations are positive for most of the North Atlantic subtropical gyre (Fig. 8). Nearly all significant trends ($p < 0.05$) in PIC concentration are positive, especially during the MODIS era (Fig. 8c, d; 1998–2007 for SeaWiFS and

2003–2012 for MODIS). However, unlike at the BATS site, Chl *a* does not appear to be increasing in most of the gyre (Fig. 9). There are slight positive trends in Chl *a* around the BATS region (Fig. 9a), but these are not statistically significant (Fig. 9b). Indeed, most of the North Atlantic subtropical gyre shows a slight negative trend in Chl *a* or no trend at all.

5 A trend of a subset of the satellite Chl *a* from 1998 to 2012 shows a slight, but nonsignificant, upward trend in Chl *a* in the BATS region (Fig. 1; $0.0009 \text{ mg m}^{-3} \text{ yr}^{-1}$, $p > 0.05$), just as the corresponding gridbox for Chl *a* at BATS in Fig. 7.

4 Discussion

4.1 Phytoplankton dynamics at BATS

10 In this study, we observed that coccolithophore populations, based on pigment data for haptophytes, are increasing at BATS and are positively correlated with DIC and HCO_3^- (Figs. 1b, 3, 7a). We observed opposite correlations for DIC and HCO_3^- with *Synechococcus*, the other major member of the phytoplankton community at BATS. Some studies have suggested that photosynthesis and growth of the coccolithophore, *E. huxleyi*, is carbon limited and could possibly benefit from increasing CO_2 (Riebesell, 2004; Rost et al., 2003; Bach et al., 2013). Since $\text{CO}_{2(\text{aq})}$ and HCO_3^- concentrations increase with increasing DIC/ocean acidification, both photosynthesis and calcification could be stimulated in coccolithophores, which primarily use CO_2 for photosynthesis and HCO_3^- for calcification (Bach et al., 2013).

15 The results presented in this study support the hypothesis that coccolithophores are responding positively to increasing carbon availability, perhaps increasing their competitive ability in oligotrophic settings such as BATS. However, a threshold H^+ ion concentration could be reached with further ocean acidification, eventually constraining coccolithophore growth.

20

Synechococcus, on the other hand, was negatively correlated with increasing carbon in the upper mixed layer and positively correlated with temperature. In laboratory experiments, *Synechococcus* showed only a slight, non-significant increase in growth rate under elevated

25

CO₂ conditions, but increased growth 2.3 fold with increasing CO₂ and temperature (Fu et al., 2007). Sea surface temperature in the upper 30 m at BATS has not increased significantly over the time period of this study (0.04 °C yr⁻¹ trend, $p = 0.22$). However, positive temperature anomalies were recorded during the 2000–2004 period, a period of increased *Synechococcus* pigment abundance (and low haptophyte pigment abundance). Conditions that could favor *Synechococcus* may eventually arise with further warming, increasing the competitive ability of *Synechococcus*.

In order to examine redundancy in our correlations, we performed multiple linear regressions between Chl a_{hapto} and several of the driver variables with which it showed the strongest correlations (not shown). When DIC and HCO₃⁻ were regressed together with Chl a_{hapto} , all the statistical power of DIC was removed, indicating that HCO₃⁻ is the primary driver of the two for Chl a_{hapto} variability. Further, when temperature and NO₃⁻ were regressed together with Chl a_{hapto} , the statistical effect of temperature was removed. This indicates that temperature is not a controlling factor for coccolithophore variability, but rather is a proxy for nutrient concentration in relation to coccolithophore growth. A multiple linear regression of Chl a_{hapto} with both HCO₃⁻ and NO₃⁻ explained > 50% of the variance in Chl a_{hapto} ($r^2 = 0.52$). Other factors, such as competition or grazing, could perhaps account for some of the remaining variability. Both HCO₃⁻ and NO₃⁻ have increased significantly over this time period ($p < 0.001$). However, NO₃⁻ measurements are highly variable and near zero, making their accuracy questionable, and the trend is only significant if the last two years are included in the time-series (Figure S2). This is in contrast to HCO₃⁻, which shows largely positive trends over this time period matching quite well with those of Chl a_{hapto} (Fig. 7).

The positive trend in HCO₃⁻ concentration in the upper mixed layer of the water column at BATS is most likely due to increasing absorption of anthropogenic CO₂ from the atmosphere. The upper 30 m of the water column is particularly inundated with anthropogenic CO₂ in the North Atlantic (Sabine et al., 2004; Bates et al., 2012). From 1991 to 2012, DIC concentration in the upper 30 m at BATS increased by a rate of 1.4 μmol kg⁻¹ yr⁻¹, which is roughly the expected rate of increase given the rise in atmospheric CO₂ (see Chapter 10 in

Sarmiento and Gruber, 2006). Increasing inorganic carbon supply could also be accompanied by warmer sea surface temperatures, increased stratification, and decreased nutrient supply over the next century (Cabr e et al., 2015). Enriched coccolithophore growth by this additional carbon, as well as other predicted oceanic changes with global warming, could lead to shifts in phytoplankton community structure at BATS.

Coccolithophores are not the only phytoplankton that may be responding positively to additional inorganic carbon. *Trichodesmium*, the filamentous N₂-fixing cyanobacteria, has been shown to increase growth and N₂ fixation under increasing CO₂ (Hutchins et al., 2007), yet other drivers such as sea surface temperature, nutrients, and species diversity tend to exert more control on their growth in situ (Snow et al., 2015; Gradoville et al., 2014). *Trichodesmium* has been reported to be a common component of the phytoplankton assemblages in the subtropical North Atlantic (Carpenter et al., 2004; Agawin et al., 2013; Orcutt et al., 2001), but was not specifically resolved in this study. *Trichodesmium* contain a similar suite of pigments as *Synechococcus* (Carpenter et al., 1993; Andersen et al., 1996), and therefore could be included in the Chl *a*_{syn} fraction of our calculations. This would aid to explain the negative correlation between Chl *a*_{syn} and NO₃⁻ (Fig. 3), and further explain why Chl *a*_{syn} is more abundant than Chl *a*_{hapto} in the upper water column during warmer, more stratified periods.

Whatever the exact components of Chl *a*_{syn}, Chl *a*_{hapto} generally shows opposing abundance with this group. We hypothesize that when the *Synechococcus* component (~40% of Chl *a* on average at BATS) is abundant (perhaps due to a positive temperature anomaly), photosynthesis accompanying an increase in *Synechococcus* draws down DIC (thus, HCO₃⁻). Low DIC could provoke carbon limitation of the coccolithophore population (Riebesell, 2004; Rost et al., 2003), hindering their competitive ability. Overall, however, the increase in DIC experienced at BATS during the past two decades could lead to slightly increased growth rates of coccolithophores (Riebesell, 2004; Rost et al., 2003), perhaps bolstering their competitive ability within the phytoplankton community. If coccolithophores are becoming more competitive at BATS due to a lessening of carbon limitation, then they could continue to exert greater competitive stress on *Synechococcus*, which appear to be competing with

coccolithophores for a similar niche. However, if the surface waters continue to warm in this region of the Atlantic, as predicted (Cabr e et al., 2015), then *Synechococcus* could regain its competitive edge. Furthermore, increasing H^+ ion concentrations could eventually constrain coccolithophore growth (Bach et al., 2013, 2015). Small changes in DIC, nutrients, pH, or temperature could, in combination, influence which phytoplankton group (*Synechococcus* or haptophytes) dominate at any given time at BATS.

The *Prochlorococcus* group, designated by $Chl\ a_{pro}$, shows similar correlations with oceanic driver variables as for $Chl\ a_{hapto}$ (Fig. 3). *Prochlorococcus* have been shown to lack a $CO_2(aq)$ uptake mechanism and therefore rely on HCO_3^- uptake for photosynthesis (Badger and Price, 2003), possibly explaining similar behavior to coccolithophores (also positively correlated with HCO_3^-), which use HCO_3^- for calcification. *Prochlorococcus* reside mainly in the deep chlorophyll maximum, comprising a rather small portion of the $Chl\ a$ in the upper 30 m at BATS (Figs. 2, 4). This could be, however, due to the relatively high $Chl\ b$ to $Chl\ a$ ratio used in our pigment calculations (Letelier et al., 1993), which is more representative of low-light *Prochlorococcus* (Partensky et al., 1999). Yet, since ~ 2005 , $Chl\ a_{pro}$ has been more common in the upper 30 m, resulting in an overall positive trend in $Chl\ a_{pro}$ over the entire time-series ($p < 0.001$).

Consistent with colder, high nutrient environments in which diatoms are normally found, $Chl\ a_{diatoms}$ showed a strong positive correlation with NO_3^- and a negative correlation with temperature (Fig. 3). If predicted trends in sea surface temperature and nutrient supply with further stratification are realized, then diatoms could become a reduced component of the phytoplankton assemblage at BATS (Cabr e et al., 2015). Combining fine scale phytoplankton dynamics from BATS with the satellite record can help to elucidate what changes are occurring over large spatial scales.

4.2 Trends $Chl\ a$ and $Chl\ a_{hapto}$ in the subtropical gyre

Unlike at BATS, $Chl\ a$ in the North Atlantic subtropical gyre is not increasing (Fig. 9). PIC, on the other hand, shows mainly positive trends over the whole gyre, in agreement with data from BATS – $Chl\ a_{hapto}$ shows overall increasing trends, despite some periods of low

abundance. Together with an absence of Chl *a* trend, this implies that coccolithophores are increasing in abundance relative to other types of phytoplankton in the subtropical gyre. Accompanying this conclusion, however, are uncertainties associated with the satellite-derived PIC estimates (see Section 4.3 on Limitations of this Study). Even so, ratios relating Chl a_{hapto} to PIC can further elucidate confidence in satellite-derived PIC estimates.

Data on the amount of Chl *a* per coccolithophore cell allows the calculation of cell concentration of coccolithophores in the surface waters at BATS. Using a value of 0.26 pg Chl *a* per cell (Haxo, 1985), mean coccolithophore cell concentration in the upper 30 m is $143 \times 10^3 \text{ cells L}^{-1}$ (corresponding to the mean value of $37.3 \mu\text{g Chl } a_{\text{hapto}} \text{ m}^{-3}$ in the upper 30 m). Employing a ratio of PIC to coccolith of 0.26 (Balch et al., 1992) and considering 15 coccoliths per cell (a minimal monolayer of coccoliths covering the cell) under nutrient replete conditions and 100 coccoliths per cell under severe nutrient limitation (Paasche, 1998), we arrive at a PIC concentration range of 0.56 to $3.73 \text{ mg PIC m}^{-3}$. This range corresponds well to the average satellite-derived PIC concentration in the BATS region (Fig. 1a) over the study period: $2.71 \text{ mg PIC m}^{-3}$ for SeaWiFS (standard deviation = 0.50) and $2.66 \text{ mg PIC m}^{-3}$ (standard deviation = 0.39) for MODIS. The relatively high satellite-derived PIC concentration further suggests that coccolithophores may be experiencing nutrient limitation at BATS (and producing additional coccoliths in response; Paasche, 1998). Therefore, even given the multiple sources of error involved with satellite-derived PIC estimates and pigment analyses (see below), we feel the strong predominance of positive trends in PIC, along with the BATS Chl a_{hapto} data, suggests that coccolithophores are proliferating in this region (Fig. 8).

4.3 Limitations of this study

There are several caveats of this study that must be discussed before these results can be put into context. First, a primary assumption in this paper is that the haptophyte group is mainly composed of coccolithophores. Though high haptophyte diversity has been reported in open ocean regimes (Liu et al., 2009), this does not necessarily contradict the assumption that coccolithophores are the dominant type of haptophyte. While several studies describe

coccolithophores to be the dominant haptophyte at BATS (see Methods; Lomas and Bates, 2004; Steinberg et al., 2001), this claim remains unsupported by specific data. We use the significant positive correlation between Chl a_{hapto} and cell counts from Haidar and Thierstein (2001) to support our assumption that Chl a_{hapto} is mainly representative of coccolithophores (Figure S1). However, as with any study that derives phytoplankton community composition from signature pigments, inherent uncertainties are associated with changes in pigment content within a phytoplankton group over time.

Overall pigment and PIC concentration per coccolithophore cell may be influenced by environmental conditions. For example, photo-acclimation and nutrient limitation can invoke changes in pigment composition or calcification that are not necessarily associated with changes in overall abundance (Behrenfeld et al., 2015; Paasche, 1998). Dominant species shifts within a phytoplankton group could also influence pigment and/or PIC measurements. Nevertheless, given upward trends observed for both Chl a_{hapto} and PIC (Figs. 5, 8) we feel the most probable explanation of these observations is increases in overall coccolithophore abundance. However, satellite-derived PIC measurements also contain inherent uncertainties.

Radiance-based algorithms for deriving PIC from satellite reflectance data are formulated to capture the light scattering properties of the numerically dominant coccolithophore, *E. huxleyi*, but also capture detached or detrital coccoliths (Gordon et al., 2001; Balch et al., 2005). PIC concentrations in the North Atlantic subtropical gyre are comparatively low, generally $\sim 2.7 \text{ mg m}^{-3}$, compared to other coccolithophore bloom regions, which have PIC concentrations between 10 and 100 mg m^{-3} (Balch et al., 2005). The low concentrations of PIC observed in the North Atlantic subtropical gyre could be within background error or nearing the sensitivity threshold of the instrument. Errors in satellite-derived PIC can arise from atmospheric correction, inclusion of other suspended minerals (such as silica; “opal contamination”), and/or the influence of chlorophyll or colored dissolved organic matter (see Balch et al., 2005). However, these errors can be minimized by binning in space and time, as we have done in this study (using monthly, 9 km data rather than daily, 4 km data). It is also curious that SeaWiFS-derived PIC data better matches the Chl a_{hapto} estimates from

BATS than the MODIS PIC (Fig. 5). On one hand, this may be indicative that other 19'-hex-containing haptophytes were responsible for the increase in Chl a_{hapto} at BATS during the last several years of the time-series. On the other hand, the predominance of upward trends in MODIS-derived PIC for areas around BATS (Fig. 8b,d) suggests increases in calcifying haptophytes (coccolithophores). It should be noted that MODIS PIC from the BATS region (see Fig. 1) still shows a significant correlation with Chl a_{hapto} (see Results, section 3.5).

Finally, we are limited in our trend analysis by the length of the time-series data. Figure 7 demonstrates that different start and end years can influence the sign and magnitude of our trends in, e.g., Chl a_{hapto} . In this study, we report trends in pigments from 1990 to 2012 and trends in PIC from 1998 to 2014, both of which, when employing the full time-series of data, imply increases in coccolithophore populations in the subtropical North Atlantic.

4.4 Trends in coccolithophore abundance: present and future

This is not the only study to suggest that coccolithophores are increasing in abundance in the North Atlantic. Further, using Continuous Plankton Recorder ship measurements, Rivero-Calle and co-authors (2015) document an increase in coccolithophore occurrence from ~ 2 to $> 20\%$ in the North Atlantic from 1965 to 2010, which they attribute to increasing CO_2 concentrations. The data region in their study extends from ~ 40 to $\sim 65^\circ \text{N}$ (subpolar gyre), just north of the subtropical gyre region focused on in this study. Thus, these studies combined add robustness to the conclusion that coccolithophores in the North Atlantic are increasing in abundance and are likely stimulated by additional carbon from anthropogenic sources.

Ocean acidification may eventually hinder the growth and calcification of coccolithophores, however. Recently, Bach (2015) and Bach et al. (2015) introduced the “substrate–inhibitor” ratio, describing the dependence of calcification on HCO_3^- (the substrate) and H^+ (the inhibitor) concentrations. When this ratio falls below a critical level (i.e., intercellular to extracellular H^+ concentration ratio too low) then coccolithophore calcification will be hindered, unless they evolve a mechanism for coping with low pH (Bach et al., 2015). Bach et al. (2013) demonstrate that pH starts to have a negative impact below $\text{pH}_T 7.7$, whereas the

BATS average pH_T is ~ 8.1 . Thus, critical pH levels will not likely happen for several thousand years (Bach et al., 2015). Other factors besides carbonate chemistry, such as light availability, temperature, and nutrients, likely influence coccolithophore growth in present day oceans.

5 4.5 Potential implications

Increases in coccolithophore abundance in the North Atlantic could have far-reaching ecological, biogeochemical, and climate effects. A shift in phytoplankton community structure could change trophic dynamics, ultimately resulting in ecosystem shifts (Pörtner et al., 2014). For example, though the evolutionary purpose of coccolithophore shells is unclear, some studies speculate they could protect against grazing (see chapter on functions of coccoliths in Winter and Siesser, 1994). Shifts to relatively more coccolithophores in a phytoplankton assemblage could reduce trophic energy available for grazers. Coccolithophore shells also function as a ballast material, sinking faster due to increased weight of the CaCO_3 shell, and sequestering organic matter in the deep ocean (Sarmiento and Gruber, 2006; for a recent study of export at BATS, see Lomas et al., 2010). Increases in coccolithophore abundance may have a positive impact on export production, thus a negative feedback on increasing atmospheric CO_2 . In addition to bringing carbon to the deep ocean, coccolithophores produce the marine trace gas dimethyl sulfide (DMS; Keller, 1989), which affects cloud formation and climate. Therefore, overall increases in coccolithophore abundance could increase marine DMS production. Furthermore, DMS production by the coccolithophore, *E. huxeyi*, has been shown to increase with increasing temperature and ambient CO_2 (Arnold et al., 2013). Thus, changes in coccolithophore abundance could have a multitude of effects on marine ecosystems in the North Atlantic, as well as global carbon cycling and climate. These effects could be further amplified if other ocean basins show similar shifts in phytoplankton composition.

In the subtropical North Atlantic, the upper mixed layer contains particularly high levels of anthropogenic CO_2 (Sabine et al., 2004; Bates et al., 2012). We speculate that this rise in DIC is contributing to the increases in coccolithophore pigments and PIC documented

in this study. However, it is not clear if phytoplankton communities in other similar oceanic ecosystems, e.g., the North Pacific subtropical gyre, will show similar changes as atmospheric CO₂ concentrations continue to increase and inundate the upper mixed layer. The aforementioned ecosystem and carbon cycle effects of coccolithophore increases could become even more prevalent in the world's ocean, or, alternatively, coccolithophore growth could be further modulated by temperature, nutrients, and light. In any case, monitoring the response of natural coccolithophore populations to increasing DIC/ocean acidification is essential for understanding effects of anthropogenic carbon emissions on the world's oceans.

5 Conclusions

In this study, we showed that, based on pigment and satellite-derived PIC measurements, coccolithophores appear to be increasing abundance in the subtropical North Atlantic. Coccolithophores seem to be responding positively to additional inorganic carbon in the upper mixed later of water column, but are also correlated with NO₃⁻. These results complement those of Rivero-Calle et al. (2015), who also document an increase in coccolithophore occurrence in the North Atlantic, albeit farther north, stimulated by anthropogenic CO₂ emissions. Increasing coccolithophore abundance is contrary to what numerous laboratory studies have predicted, highlighting the importance of in situ observations. Growth of coccolithophores could, however, be eventually inhibited by decreasing pH and/or other environmental effects of climate change.

Acknowledgements. We would like to thank Rod Johnson, Mike Lomas, and Deborah Steinberg for access to BATS data, and the BATS research group for their sustained efforts collecting data. The SeaWiFs and MODIS particulate inorganic carbon data were obtained from the NASA Ocean Color archive (<http://oceancolor.gsfc.nasa.gov>). The Fortran 90 code for Mocsy routines to model the ocean carbonate system were obtained from the Mocsy website (<http://ocmip5.ipsl.jussieu.fr/mocsy/index.html>). Funding for this research was provided by NSF (OCE-1155240; OCE-1258995), NASA (NNX11AF53G), and NOAA (NAO12AR4310058).

References

- Agawin, N. S. R., Tovar-Sánchez, A., de Zarruk, K. K., Duarte, C. M., and Agustí, S.: Variability in the abundance of Trichodesmium and nitrogen fixation activities in the subtropical NE Atlantic, *Journal of Plankton Research*, 35, 1126–1140, 2013.
- 5 Andersen, R. A., Bidigare, R. R., Keller, M. D., and Latasa, M.: A comparison of HPLC pigment signatures and electron microscopic observations for oligotrophic waters of the North Atlantic and Pacific Oceans, *Deep Sea Research Part II: Topical Studies in Oceanography*, 43, 517 – 537, doi:[http://dx.doi.org/10.1016/0967-0645\(95\)00095-X](http://dx.doi.org/10.1016/0967-0645(95)00095-X), <http://www.sciencedirect.com/science/article/pii/096706459500095X>, 1996.
- 10 Arnold, H. E., Kerrison, P., and Steinke, M.: Interacting effects of ocean acidification and warming on growth and DMS-production in the haptophyte coccolithophore *Emiliana huxleyi*, *Global Change Biology*, 19, 1007–1016, doi:10.1111/gcb.12105, <http://dx.doi.org/10.1111/gcb.12105>, 2013.
- Bach, L. T.: Reconsidering the role of carbonate ion concentration in calcification by marine organisms, *Biogeosciences (BG)*, 12, 4939–4951, <http://eprints.uni-kiel.de/28810/wOS:000360294800005>, 2015.
- 15 Bach, L. T., Mackinder, L. C. M., Schulz, K. G., Wheeler, G., Schroeder, D. C., Brownlee, C., and Riebesell, U.: Dissecting the impact of CO₂ and pH on the mechanisms of photosynthesis and calcification in the coccolithophore *Emiliana huxleyi*, *New Phytologist*, 199, 121–134, doi:10.1111/nph.12225, <http://dx.doi.org/10.1111/nph.12225>, 2013.
- 20 Bach, L. T., Riebesell, U., Gutowska, M. A., Federwisch, L., and Schulz, K. G.: A unifying concept of coccolithophore sensitivity to changing carbonate chemistry embedded in an ecological framework, *Progress in Oceanography*, 135, 125–138, doi:<http://dx.doi.org/10.1016/j.pocean.2015.04.012>, 2015.
- Badger, M. R. and Price, G. D.: CO₂ concentrating mechanisms in cyanobacteria: molecular components, their diversity and evolution, *Journal of Experimental Botany*, 54, 609–622, doi:10.1093/jxb/erg076, <http://jxb.oxfordjournals.org/content/54/383/609.abstract>, 2003.
- 25 Balch, W., Gordon, H. R., Bowler, B., Drapeau, D., and Booth, E.: Calcium carbonate measurements in the surface global ocean based on Moderate-Resolution Imaging Spectroradiometer data, *Journal of Geophysical Research: Oceans*, 110, 1978–2012, 2005.
- 30 Balch, W. M. and Utgoff, P. E.: Potential Interactions Among Ocean Acidification, Coccolithophores, and the Optical Properties of Seawater, *Oceanography*, 22, 146–159, 2008.

- Balch, W. M., Holligan, P. M., and Kilpatrick, K. A.: Calcification, photosynthesis and growth of the bloom-forming coccolithophore, *Emiliana huxleyi*, *Continental Shelf Research*, 12, 1353–1374, doi:[http://dx.doi.org/10.1016/0278-4343\(92\)90059-S](http://dx.doi.org/10.1016/0278-4343(92)90059-S), 1992.
- 5 Bates, N. R., Best, M. H. P., Neely, K., Garley, R., Dickson, A. G., and Johnson, R. J.: Detecting anthropogenic carbon dioxide uptake and ocean acidification in the North Atlantic Ocean, *Biogeosciences*, 9, 2509–2522, doi:10.5194/bg-9-2509-2012, <http://www.biogeosciences.net/9/2509/2012/>, 2012.
- 10 Bates, N. R., Asto, Y., Church, M., Currie, K., Dore, J., González-Dávila, M., Lorenzoni, L., Muller-Karger, F., Olafsson, J., and Santana-Casiano, J.: A time-series view of changing ocean chemistry due to ocean uptake of anthropogenic CO₂ and ocean acidification, *Oceanography*, 27, 126–141, 2014.
- 15 Beaufort, L., Probert, I., de Garidel-Thoron, T., Bendif, E. M., Ruiz-Pino, D., Metzl, N., Goyet, C., Buchet, N., Coupel, P., Grelaud, M., Rost, B., Rickaby, R. E. M., and de Vargas, C.: Sensitivity of coccolithophores to carbonate chemistry and ocean acidification, *Nature*, 476, 80–83, <http://dx.doi.org/10.1038/nature10295>, 2011.
- Behrenfeld, M. J., O'Malley, R. T., Boss, E. S., Westberry, T. K., Graff, J. R., Halsey, K. H., Milligan, A. J., Siegel, D. A., and Brown, M. B.: Reevaluating ocean warming impacts on global phytoplankton, *Nature Clim. Change*, <http://dx.doi.org/10.1038/nclimate2838>, 2015.
- 20 Boyd, P. W., Lennartz, S. T., Glover, D. M., and Doney, S. C.: Biological ramifications of climate-change-mediated oceanic multi-stressors, *Nature Clim. Change*, 5, 71–79, <http://dx.doi.org/10.1038/nclimate2441>, 2015.
- Brown, Z. W. and Arrigo, K. R.: Contrasting trends in sea ice and primary production in the Bering Sea and Arctic Ocean, *ICES Journal of Marine Science: Journal du Conseil*, 69, 1180–1193, 2012.
- 25 Cabré, A., Marinov, I., and Leung, S.: Consistent global responses of marine ecosystems to future climate change across the IPCC AR5 earth system models, *Climate Dynamics*, 45, 1253–1280, doi:10.1007/s00382-014-2374-3, <http://dx.doi.org/10.1007/s00382-014-2374-3>, 2015.
- Carpenter, E., Oneil, J., Dawson, R., Capone, D., Siddiqui, P., Roenneberg, T., and Bergman, B.: The tropical diazotrophic phytoplankter *Trichodesmium*-biological characteristics of two common species, *Marine Ecology Progress Series*, 95, 295–304, 1993.
- 30 Carpenter, E. J., Subramaniam, A., and Capone, D. G.: Biomass and primary productivity of the cyanobacterium *Trichodesmium* spp. in the tropical N Atlantic ocean, *Deep Sea Research Part I*:

- Oceanographic Research Papers, 51, 173–203, doi:<http://dx.doi.org/10.1016/j.dsr.2003.10.006>, <http://www.sciencedirect.com/science/article/pii/S096706370300195X>, 2004.
- 5 Cortés, M. Y., Bollmann, J., and Thierstein, H. R.: Coccolithophore ecology at the HOT station ALOHA, Hawaii, Deep sea research Part II: Topical studies in oceanography, 48, 1957–1981, 2001.
- Dandonneau, Y., Montel, Y., Blanchot, J., Giraudeau, J., and Neveux, J.: Temporal variability in phytoplankton pigments, picoplankton and coccolithophores along a transect through the North Atlantic and tropical southwestern Pacific, Deep Sea Research Part I: Oceanographic Research Papers, 53, 689 – 712, doi:<http://dx.doi.org/10.1016/j.dsr.2006.01.002>, <http://www.sciencedirect.com/science/article/pii/S0967063706000446>, 2006.
- 10 Delille, B., Harlay, J., Zondervan, I., Jacquet, S., Chou, L., Wollast, R., Bellerby, R. G., Frankignoulle, M., Borges, A. V., Riebesell, U., et al.: Response of primary production and calcification to changes of pCO₂ during experimental blooms of the coccolithophorid *Emiliana huxleyi*, Global Biogeochemical Cycles, 19, doi:10.1029/2004GB002318, 2005.
- 15 Doney, S. C., Fabry, V. J., Feely, R. A., and Kleypas, J. A.: Ocean acidification: the other CO₂ problem, Annual Review of Marine Science, 1, 169–192, 2009.
- Feng, Y., Hare, C., Leblanc, K., Rose, J. M., Zhang, Y., DiTullio, G. R., Lee, P. A., Wilhelm, S. W., Rowe, J. M., Sun, J., Nemcek, N., Gueguen, C., Passow, U., Benner, I., Brown, C., and Hutchins, D. A.: Effects of increased pCO₂ and temperature on the North Atlantic spring bloom. I. The phytoplankton community and biogeochemical response, Marine Ecology Progress Series, 388, 13–25, <http://www.int-res.com/abstracts/meps/v388/p13-25/>, 2009.
- 20 Freeman, N. M. and Lovenduski, N. S.: Decreased calcification in the Southern Ocean over the satellite record, Geophysical Research Letters, 42, 1834–1840, doi:10.1002/2014GL062769, <http://dx.doi.org/10.1002/2014GL062769>, 2015.
- 25 Fu, F.-X., Warner, M. E., Zhang, Y., Feng, Y., and Hutchins, D. A.: Effects of increased temperature and CO₂ on photosynthesis, growth, and elemental ratios in marine *Synechococcus* and *Prochlorococcus* (Cyanobacteria), Journal of Phycology, 43, 485–496, doi:10.1111/j.1529-8817.2007.00355.x, <http://dx.doi.org/10.1111/j.1529-8817.2007.00355.x>, 2007.
- Giovannoni, S. J. and Vergin, K. L.: Seasonality in ocean microbial communities, Science, 335, 671–676, 2012.
- 30 Gordon, H. R., Boynton, G. C., Balch, W. M., Groom, S. B., Harbour, D. S., and Smyth, T. J.: Retrieval of coccolithophore calcite concentration from SeaWiFS Imagery, Geophysical Research Letters, 28, 1587–1590, doi:10.1029/2000GL012025, <http://dx.doi.org/10.1029/2000GL012025>, 2001.

- Gradoville, M. R., White, A. E., Böttjer, D., Church, M. J., and Letelier, R. M.: Diversity trumps acidification: Lack of evidence for carbon dioxide enhancement of *Trichodesmium* community nitrogen or carbon fixation at Station ALOHA, *Limnology and Oceanography*, 59, 645–659, doi:10.4319/lo.2014.59.3.0645, <http://dx.doi.org/10.4319/lo.2014.59.3.0645>, 2014.
- 5 Gruber, N.: Warming up, turning sour, losing breath: ocean biogeochemistry under global change, *Philosophical Transactions of the Royal Society of London A: Mathematical, Physical and Engineering Sciences*, 369, 1980–1996, <http://rsta.royalsocietypublishing.org/content/369/1943/1980.abstract>, 2011.
- Haidar, A. T. and Thierstein, H. R.: Coccolithophore dynamics of Bermuda (N. Atlantic), *Deep Sea Research Part II: Topical Studies in Oceanography*, 48, 1925–1956, 2001.
- 10 Haxo, F. T.: Photosynthetic action spectrum of the coccolithophorid, *Emiliania huxleyi* (haptophyceae): 19' Hexanoyloxyfucoxanthin, *Journal of Phycology*, 21, 282–287, doi:10.1111/j.0022-3646.1985.00282.x, 1985.
- Hutchins, D. A., Fu, F.-X., Zhang, Y., Warner, M. E., Feng, Y., Portune, K., Bernhardt, P. W., and 15 Mulholland, M. R.: CO₂ control of *Trichodesmium* N₂ fixation, photosynthesis, growth rates, and elemental ratios: Implications for past, present, and future ocean biogeochemistry, *Limnology and Oceanography*, 52, 1293–1304, doi:10.4319/lo.2007.52.4.1293, <http://dx.doi.org/10.4319/lo.2007.52.4.1293>, 2007.
- Iglesias-Rodriguez, M. D., Halloran, P. R., Rickaby, R. E. M., Hall, I. R., Colmenero-Hidalgo, E., 20 Gittins, J. R., Green, D. R. H., Tyrrell, T., Gibbs, S. J., von Dassow, P., Rehm, E., Armbrust, E. V., and Boessenkool, K. P.: Phytoplankton Calcification in a High-CO₂ World, *Science*, 320, 336–340, doi:10.1126/science.1154122, <http://www.sciencemag.org/content/320/5874/336.abstract>, 2008.
- Keller, M. D.: Dimethyl Sulfide Production and Marine Phytoplankton: The Importance of Species Composition and Cell Size, *Biological Oceanography*, 6, 375–382, 25 doi:10.1080/01965581.1988.10749540, <http://www.tandfonline.com/doi/abs/10.1080/01965581.1988.10749540>, 1989.
- Letelier, R. M., Bidigare, R. R., Hebel, D. V., Ondrusek, M., Winn, C. D., and Karl, D. M.: Temporal variability of phytoplankton community structure based on pigment analysis, *Limnology and Oceanography*, 38, 1420–1437, doi:10.4319/lo.1993.38.7.1420, <http://dx.doi.org/10.4319/lo.1993.38.7.1420>, 30 38.7.1420, 1993.
- Liu, H., Probert, I., Uitz, J., Claustre, H., Aris-Brosou, S., Frada, M., Not, F., and de Vargas, C.: Extreme diversity in noncalcifying haptophytes explains a major pigment paradox

- in open oceans, *Proceedings of the National Academy of Sciences*, 106, 12803–12808, doi:10.1073/pnas.0905841106, <http://www.pnas.org/content/106/31/12803.abstract>, 2009.
- 5 Lomas, M., Bates, N., Johnson, R., Knap, A., Steinberg, D., and Carlson, C.: Two decades and counting: 24-years of sustained open ocean biogeochemical measurements in the Sargasso Sea, *Deep Sea Research Part II: Topical Studies in Oceanography*, 93, 16 – 32, doi:<http://dx.doi.org/10.1016/j.dsr2.2013.01.008>, <http://www.sciencedirect.com/science/article/pii/S0967064513000192>, measuring Ocean Change: Results from BATS, HOT, and {CARIACO}, 2013.
- 10 Lomas, M. W. and Bates, N. R.: Potential controls on interannual partitioning of organic carbon during the winter/spring phytoplankton bloom at the Bermuda Atlantic time-series study (BATS) site, *Deep Sea Research Part I: Oceanographic Research Papers*, 51, 1619–1636, 2004.
- Lomas, M. W., Steinberg, D. K., Dickey, T., Carlson, C. A., Nelson, N. B., Condon, R. H., and Bates, N. R.: Increased ocean carbon export in the Sargasso Sea linked to climate variability is countered by its enhanced mesopelagic attenuation, *Biogeosciences*, 7, 57–70, doi:10.5194/bg-7-57-2010, <http://www.biogeosciences.net/7/57/2010/>, 2010.
- 15 Lueker, T. J., Dickson, A. G., and Keeling, C. D.: Ocean $p\text{CO}_2$ calculated from dissolved inorganic carbon, alkalinity, and equations for K_1 and K_2 : validation based on laboratory measurements of CO_2 in gas and seawater at equilibrium, *Marine Chemistry*, 70, 105 – 119, doi:[http://dx.doi.org/10.1016/S0304-4203\(00\)00022-0](http://dx.doi.org/10.1016/S0304-4203(00)00022-0), <http://www.sciencedirect.com/science/article/pii/S0304420300000220>, 2000.
- 20 Mackey, K., Morris, J., Morel, F., and Kranz, S.: Response of photosynthesis to ocean acidification, *Oceanography*, doi:10.5670/oceanog.2015.33, 2015.
- Monterey, G. and Levitus, S.: Seasonal variability of mixed layer depth for the world ocean, vol. NOAA Atlas NESDIS 14, U.S. Department of Commerce, 1997.
- 25 Orcutt, K. M., Lipschultz, F., Gundersen, K., Arimoto, R., Michaels, A. F., Knap, A. H., and Gallon, J. R.: A seasonal study of the significance of N_2 fixation by *Trichodesmium* spp. at the Bermuda Atlantic Time-series Study (BATS) site, *Deep Sea Research Part II: Topical Studies in Oceanography*, 48, 1583 – 1608, doi:[http://dx.doi.org/10.1016/S0967-0645\(00\)00157-0](http://dx.doi.org/10.1016/S0967-0645(00)00157-0), <http://www.sciencedirect.com/science/article/pii/S0967064500001570>, 2001.
- 30 Orr, J. C. and Epitalon, J.-M.: Improved routines to model the ocean carbonate system: Mocsy 2.0, *Geoscientific Model Development*, 8, 485–499, doi:10.5194/gmd-8-485-2015, <http://www.geosci-model-dev.net/8/485/2015/>, 2015.

- Orr, J. C., Epitalon, J.-M., and Gattuso, J.-P.: Comparison of seven packages that compute ocean carbonate chemistry, *Biogeosciences Discussions*, 11, 5327–5397, doi:10.5194/bgd-11-5327-2014, <http://www.biogeosciences-discuss.net/11/5327/2014/>, 2014.
- Paasche, E.: Roles of nitrogen and phosphorus in coccolith formation in *Emiliania huxleyi* (Prymnesiophyceae), *European Journal of Phycology*, 33, 33–42, doi:10.1080/09670269810001736513, 1998.
- Partensky, F., Hess, W. R., and Vault, D.: *Prochlorococcus*, a marine photosynthetic prokaryote of global significance, *Microbiology and Molecular Biology Reviews*, 63, 106–127, 1999.
- Pörtner, H.-O., Karl, D., Boyd, P., Cheung, W., Lluch-Cota, S., Nojiri, Y., Schmidt, D., and Zavialov, P.: Climate Change 2014: Impacts, Adaptation, and Vulnerability. Part A: Global and Sectoral Aspects. Contribution of Working Group II to the Fifth Assessment Report of the Intergovernmental Panel of Climate Change: Ocean systems, pp. 411–484, Cambridge University Press, Cambridge, United Kingdom and New York, NY, USA, 2014.
- Riebesell, U.: Effects of CO₂ enrichment on marine phytoplankton, *Journal of Oceanography*, 60, 719–729, doi:10.1007/s10872-004-5764-z, <http://dx.doi.org/10.1007/s10872-004-5764-z>, 2004.
- Riebesell, U., Zondervan, I., Rost, B., Tortell, P. D., Zeebe, R. E., and Morel, F. M. M.: Reduced calcification of marine plankton in response to increased atmospheric CO₂, *Nature*, 407, 364–367, <http://dx.doi.org/10.1038/35030078>, 2000.
- Riebesell, U., Schulz, K. G., Bellerby, R. G. J., Botros, M., Fritsche, P., Meyerhofer, M., Neill, C., Nondal, G., Oschlies, A., Wohlers, J., and Zollner, E.: Enhanced biological carbon consumption in a high CO₂ ocean, *Nature*, 450, 545–548, <http://dx.doi.org/10.1038/nature06267>, 2007.
- Riegman, R., Stolte, W., Noordeloos, A. A. M., and Slezak, D.: Nutrient uptake and alkaline phosphatase (EC 3:1:3:1) activity of *Emiliania huxleyi* (PRYMNESIOPHYCEAE) during growth under N and P limitation in continuous cultures, *Journal of Phycology*, 36, 87–96, doi:10.1046/j.1529-8817.2000.99023.x, <http://dx.doi.org/10.1046/j.1529-8817.2000.99023.x>, 2000.
- Rivero-Calle, S., Gnanadesikan, A., Del Castillo, C. E., Balch, W. M., and Guikema, S. D.: Multidecadal increase in North Atlantic coccolithophores and the potential role of rising CO₂, *Science*, 350, 1533–1537, doi:10.1126/science.aaa8026, <http://science.sciencemag.org/content/350/6267/1533>, 2015.
- Rost, B., Riebesell, U., Burkhardt, S., and Sültemeyer, D.: Carbon acquisition of bloom-forming marine phytoplankton, *Limnology and Oceanography*, 48, 55–67, doi:10.4319/lo.2003.48.1.0055, <http://dx.doi.org/10.4319/lo.2003.48.1.0055>, 2003.

- Sabine, C. L., Feely, R. A., Gruber, N., Key, R. M., Lee, K., Bullister, J. L., Wanninkhof, R., Wong, C. S., Wallace, D. W. R., Tilbrook, B., Millero, F. J., Peng, T.-H., Kozyr, A., Ono, T., and Rios, A. F.: The Oceanic Sink for Anthropogenic CO₂, *Science*, 305, 367–371, doi:10.1126/science.1097403, <http://www.sciencemag.org/content/305/5682/367.abstract>, 2004.
- 5 Sarmiento, J. L. and Gruber, N.: *Ocean Biogeochemical Dynamics*, Princeton University Press, 2006.
- Schlüter, L., Lohbeck, K. T., Gutowska, M. A., Groger, J. P., Riebesell, U., and Reusch, T. B. H.: Adaptation of a globally important coccolithophore to ocean warming and acidification, *Nature Clim. Change*, 4, 1024–1030, <http://dx.doi.org/10.1038/nclimate2379>, 2014.
- 10 Sciandra, A., Harlay, J., Lefèvre, D., Lemée, R., Rimmelin, P., Denis, M., and Gattuso, J.-P.: Response of coccolithophorid *Emiliana huxleyi* to elevated partial pressure of CO₂ under nitrogen limitation, *Marine ecology. Progress series*, 261, 111–122, 2003.
- Sett, S., Bach, L. T., Schulz, K. G., Koch-Klavsen, S., Lebrato, M., and Riebesell, U.: Temperature Modulates Coccolithophorid Sensitivity of Growth, Photosynthesis and Calcification to Increasing Seawater pCO₂, *PLoS ONE*, 9, e88308, doi:10.1371/journal.pone.0088308, <http://dx.doi.org/10.1371/journal.pone.0088308>, 2014.
- 15 Snow, J. T., Schlosser, C., Woodward, E. M. S., Mills, M. M., Achterberg, E. P., Mahaffey, C., Bibby, T. S., and Moore, C. M.: Environmental controls on the biogeography of diazotrophy and *Trichodesmium* in the Atlantic Ocean, *Global Biogeochemical Cycles*, 29, 865–884, doi:10.1002/2015GB005090, <http://dx.doi.org/10.1002/2015GB005090>, 2015GB005090, 2015.
- 20 Steinberg, D. K., Carlson, C. A., Bates, N. R., Johnson, R. J., Michaels, A. F., and Knap, A. H.: Overview of the US JGOFS Bermuda Atlantic Time-series Study (BATS): a decade-scale look at ocean biology and biogeochemistry, *Deep Sea Research Part II: Topical Studies in Oceanography*, 48, 1405–1447, 2001.
- 25 Thierstein, H. R. and Young, J. R.: *Coccolithophores: from molecular processes to global impact*, Springer Science & Business Media, 2004.
- Tyrrell, T. and Taylor, A.: A modelling study of *Emiliana huxleyi* in the NE Atlantic, *Journal of Marine Systems*, 9, 83–112, 1996.
- Van Lenning, K., Probert, I., Latasa, M., Estrada, M., and Young, J. R.: Pigment diversity of coccolithophores in relation to taxonomy, phylogeny and ecological preferences, in: *Coccolithophores*, pp. 51–73, Springer, 2004.
- 30

Visbeck, M. H., Hurrell, J. W., Polvani, L., and Cullen, H. M.: The North Atlantic Oscillation: Past, present, and future, *Proceedings of the National Academy of Sciences*, 98, 12876–12877, doi:10.1073/pnas.231391598, <http://www.pnas.org/content/98/23/12876.abstract>, 2001.

5 Winter, A. and Siesser, W. G., eds.: *Coccolithophores*, Cambridge University Press, Cambridge, United Kingdom and New York, NY, USA, 1994.

Wright, S. W. and van den Enden, R. L.: Phytoplankton community structure and stocks in the East Antarctic marginal ice zone (BROKE survey, January–March 1996) determined by CHEMTAX analysis of HPLC pigment signatures, *Deep Sea Research Part II: Topical Studies in Oceanography*, 47, 2363–2400, doi:[http://dx.doi.org/10.1016/S0967-0645\(00\)00029-1](http://dx.doi.org/10.1016/S0967-0645(00)00029-1), <http://www.sciencedirect.com/science/article/pii/S0967064500000291>, 2000.

10 Zapata, M., Jeffrey, S. W., Wright, S. W., Rodríguez, F., Garrido, J. L., and Clementson, L.: Photosynthetic pigments in 37 species (65 strains) of Haptophyta: implications for oceanography and chemotaxonomy, *Marine Ecology Progress Series*, 270, 83–102, 2004.

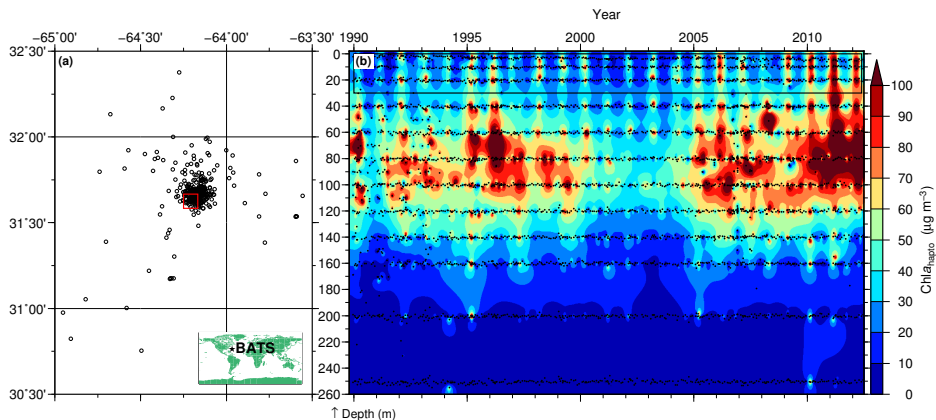


Figure 1. Horizontal (a) and vertical (b) distribution of pigment measurements taken at BATS (black dots) overlaid on a contour plot of HPLC-measured Chl a_{hapt0} at BATS. The red box in (a) shows the PIC grid cell containing the most BATS measurements (PIC data shown in Fig. 8), while the black box in (b) shows the upper 30 m of measurements used for PIC-Chl a_{hapt0} correlations and correlations presented in Fig. 3.

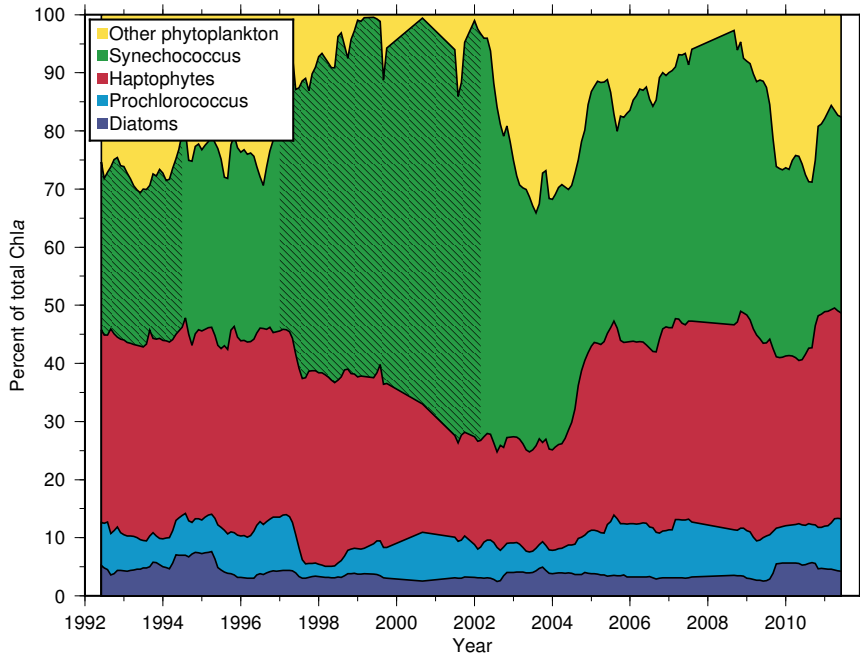


Figure 2. Percent of Chl *a* from main phytoplankton groups at BATS from 1992 to 2012 in the top 30 m of the water column derived from signature pigment and Chl a_{total} concentrations, deseasonalized with a 1 year boxcar filter (purple = diatoms, blue = *Prochlorococcus*, red = haptophytes, green = *Synechococcus*, yellow = other phytoplankton). Hatched area indicates missing pigment data for *Synechococcus*.

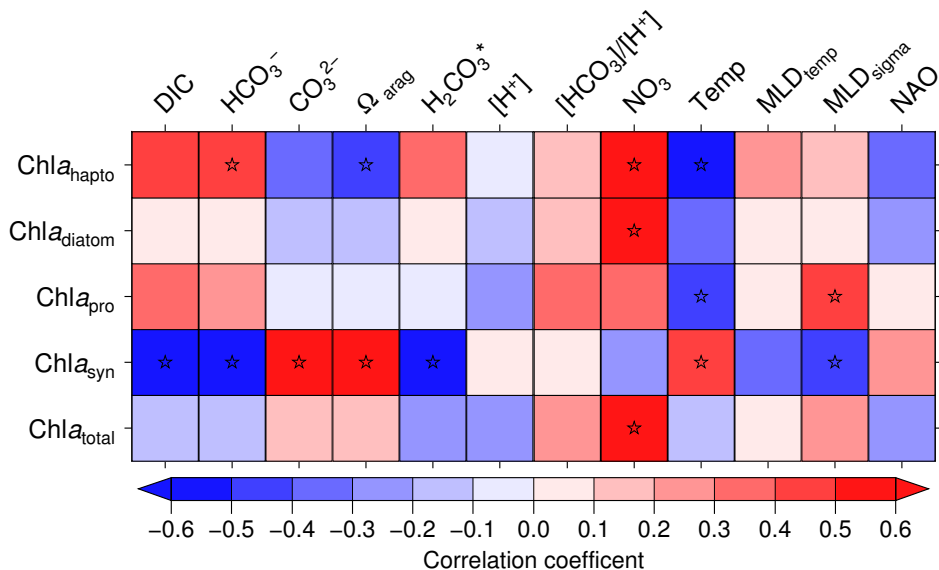


Figure 3. Correlation coefficients between Chl *a* components and various oceanographic measurements made in the upper 30 m of the water column at BATS, NAO index, calculated mixed layer depth (MLD; see Methods) and derived carbonate chemistry parameters. Stars indicate the absolute value of the correlation coefficient is greater than 0.4.

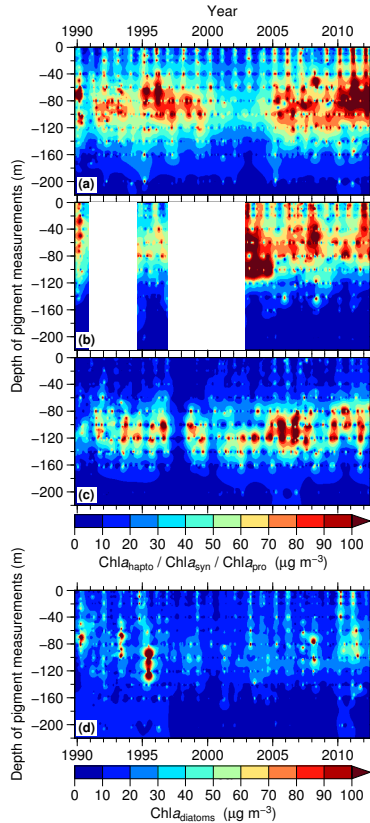


Figure 4. Temporal evolution of the vertically-resolved Chl *a* concentration from the main phytoplankton present at BATS derived from signature pigments from 1990 to 2012: **(a)** Chl a_{hapto} , **(b)** Chl a_{syn} , **(c)** Chl a_{pro} , and **(d)** Chl a_{diatoms} .

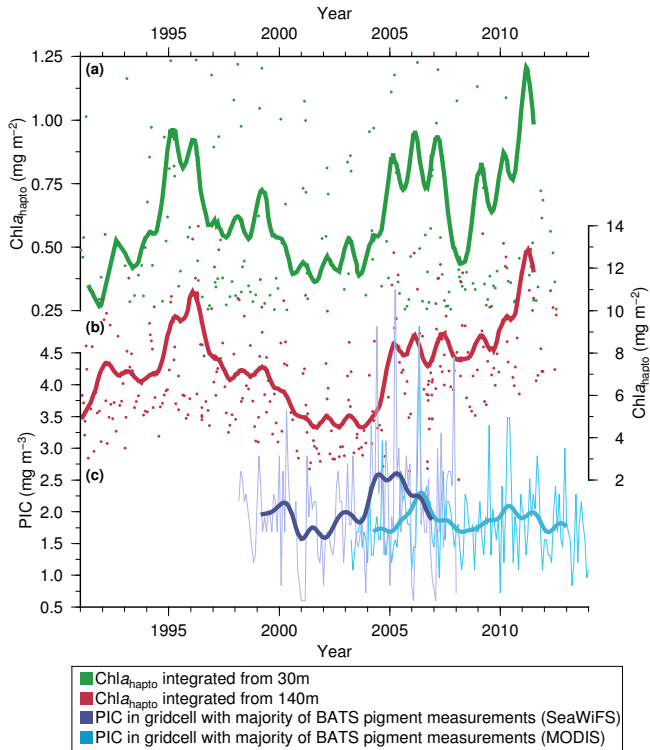


Figure 5. Chl a_{hapto} measured at BATS and satellite-derived PIC. Chl a_{hapto} integrated from 30 m is shown in (a), while Chl a_{hapto} integrated from 140 m depth is shown in (b). PIC data shown in (c) was obtained from the 5 min satellite grid cell with the most BATS measurements (see Fig. 1). Bolder lines represent a 2 year Gaussian filter on the data. We restricted the y-axes in panels (a) and (b) to highlight the filtered data; see Figure S3 to view all unfiltered data points.

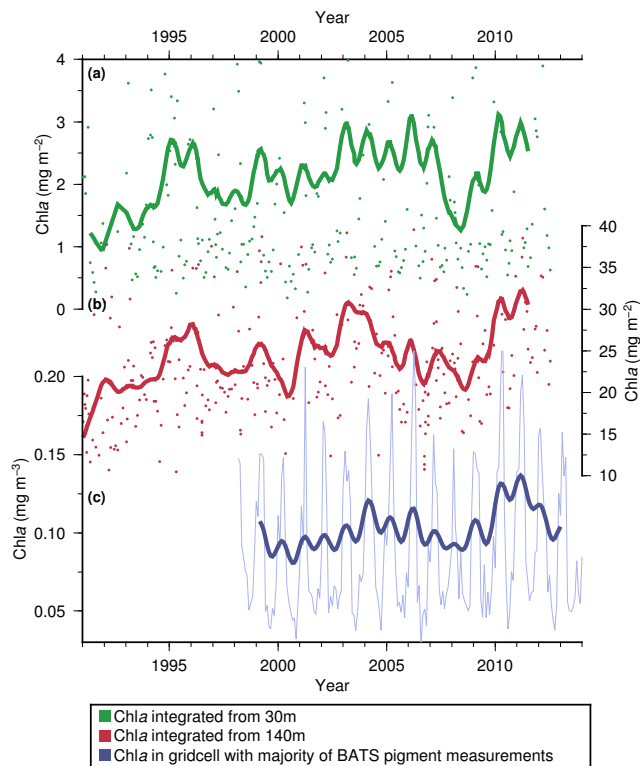


Figure 6. Chl a_{total} measured at BATS and satellite-derived Chl *a*. Chl a_{total} integrated from 30 m is shown in (a), while Chl a_{total} integrated from 140 m depth is shown in (b). Chl *a* data shown in (c) was obtained from the 5 min satellite grid cell with the most BATS measurements (see Fig. 1). Bolder lines represent a 2 year Gaussian filter on the data. We restricted the y-axes in panels (a) and (b) to highlight the filtered data; see Figure S4 to view all unfiltered data points.

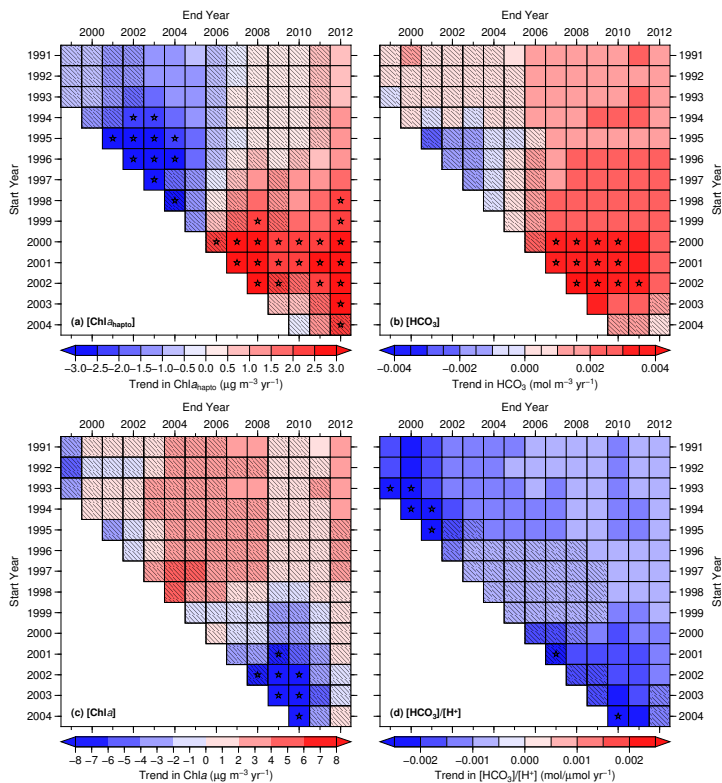


Figure 7. Linear trends for a range of start and end years in (a) $\text{Chl } a_{\text{hapto}}$, (b) HCO_3^- , (c) $\text{Chl } a$, and (d) ratio of $\text{HCO}_3^-:\text{H}^+$. All trends are based on mean concentrations measured at BATS in the upper 30 m of the water column. Boxes with hatch lines demarcate nonsignificant trends. Stars indicate absolute values of trends are greater than $0.2 \mu\text{g m}^{-3} \text{yr}^{-1}$ for $\text{Chl } a_{\text{hapto}}$, $0.003 \text{mol m}^{-3} \text{yr}^{-1}$ for HCO_3^- , $6 \mu\text{g m}^{-3} \text{yr}^{-1}$ for $\text{Chl } a$, and $0.002 \text{mol}/\mu\text{mol yr}^{-1}$ for $[\text{HCO}_3^-]/[\text{H}^+]$.

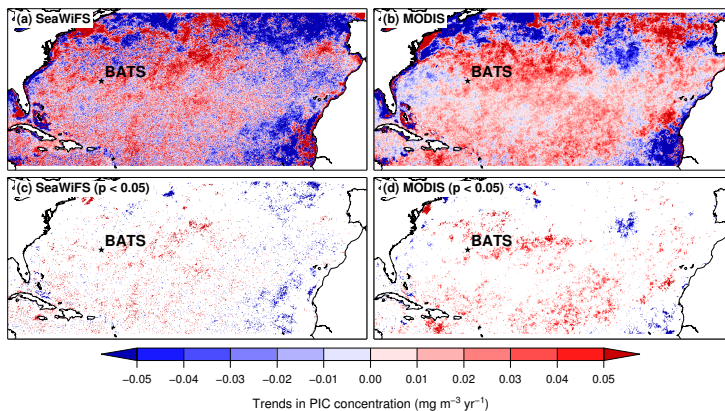


Figure 8. Trends in PIC concentration derived from satellite data for (a) and (c) SeaWiFS (1998–2007), and (b) and (d) MODIS (2003–2014). Bottom panels show significant trends ($p < 0.05$).

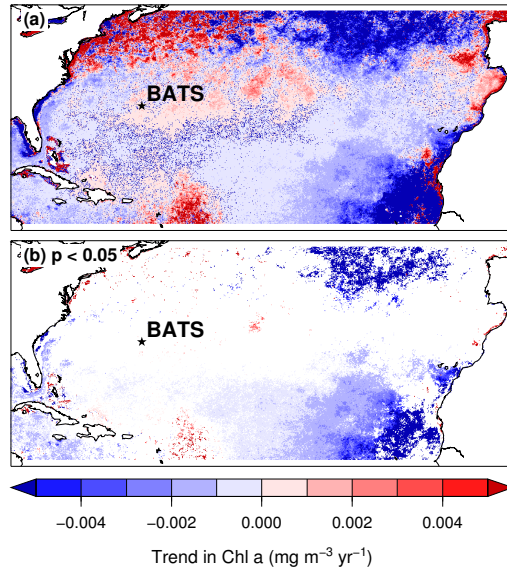


Figure 9. Trends in Chl a concentration derived from merged satellite records: SeaWiFS and MODIS (1998–2014). The bottom map (b) shows significant trends ($p < 0.05$).