

Global riverine N and P transport to ocean increased during the twentieth century despite increased retention along the aquatic continuum

A.H.W. Beusen^{1,2}, A.F. Bouwman^{1,2}, L.P.H. Van Beek³, J.M. Mogollón¹, J.J.

5 Middelburg¹

¹ Department of Earth Sciences – Geochemistry, Faculty of Geosciences, Utrecht University, PO Box 80021, 3508 TA Utrecht, The Netherlands

² PBL Netherlands Environmental Assessment Agency, P.O. Box 303, 3720 AH
10 Bilthoven, The Netherlands

³ Department of Physical Geography, Faculty of Geosciences, Utrecht University, P.O. Box 80.115, 3508 TC Utrecht, The Netherlands

Corresponding author: A.H.W. Beusen, PBL Netherlands Environmental
15 Assessment Agency, P.O. Box 303, 3720 AH Bilthoven, The Netherlands
(arthur.beusen@pbl.nl)

Abstract

20 Various human activities, including agriculture, water consumption, river damming, and aquaculture, have intensified over the last century. This has had a major impact on nitrogen (N) and phosphorus (P) cycling in global continental waters. In this study, we use a coupled nutrient-input, hydrology, in-stream nutrient retention model to quantitatively track the changes in the global freshwater N and P cycles over the 20th 25 century. Our results suggest that, during this period, the global nutrient delivery to streams increased from 34 to 64 Tg N yr⁻¹ and from 5 to 9 Tg P yr⁻¹. Furthermore, in-stream retention and removal grew from 14 to 27 Tg N yr⁻¹ and 3 to 5 Tg P yr⁻¹. One of the major cause of increased retention is the growing number of reservoirs which now account for 24% and 22% of global N and P retention/removal in freshwater 30 systems, respectively. This increase in nutrient retention could not balance the increase in nutrient delivery to rivers with the consequence that river nutrient transport to the ocean increased from 19 to 37 Tg N yr⁻¹ and from 2 to 4 Tg P yr⁻¹. Human activities have also led to a global increase in the molar N:P ratio in freshwater bodies.

35

1. Introduction

Through ever-increasing food production, land-use change, production and application of fertilizer, discharge of human and animal waste, and combustion of 40 fossil fuels, humans have perturbed the earth surface by the additional mobilization of essential nutrients such as nitrogen (N) and phosphorus (P) (Stumm, 1973; Galloway et al., 1995; Bouwman et al., 2013c; Morée et al., 2013). Deforestation and expanding agricultural land use have caused increasing sediment, carbon (C) and nutrient

delivery to and transport through river systems (Seitzinger et al., 2010), which can
45 influence photosynthetic and heterotrophic production and cause dramatic changes in
aquatic ecosystems (Vollenweider et al., 1992; Cloern, 1996; Dodds, 2002).

Eutrophication resulting from nutrient loading first manifested in lakes and rivers in
the form of excessive growth of macrophytes and floating algal scums (Butcher,
1947). In serious cases, eutrophication of surface waters leads to turbid waters with
50 decreased oxygen concentrations (hypoxia), production of toxins by algae and
bacteria, and fish kills (Diaz and Rosenberg, 2008). These changes in ecosystem
functioning due to elevated nutrient loading also have consequences for the efficiency
of C and nutrient processing within aquatic ecosystems (Soetaert et al., 2006;
Mulholland et al., 2008).

55

Another major human perturbation of freshwater nutrient cycling is related to human
impacts on hydrology. For securing food production, humans influence the hydrology
in many rivers by extracting irrigation water from the river or from constructed
reservoirs; for reducing flood risks, or securing navigability, many rivers have been
60 canalized by dam construction; for securing energy supply, humans have constructed
hydropower dams (Lehner et al., 2011). These changes in hydrology have
consequences for nutrient transport through and removal in aquatic ecosystems
because they impact the travel time of water along the aquatic continuum (Wisser et
al., 2010). Construction of the dams disconnects up- and downstream parts of rivers
65 and the reservoirs act as filters thereby changing nutrient ratios (i.e. stoichiometry)
(Billen et al., 1991).

Such human-induced changes in hydrology and nutrient delivery have consequences for nutrient transport through and retention in aquatic systems conformed by the soil, groundwater, riparian zone, streams, rivers, lake, and reservoir continuum, and eventually nutrient delivery to the oceans (Bouwman et al., 2013b). International, collaborative research programs such as Global NEWS have generated estimates for the global nutrient delivery to the ocean based on lumped statistical models ignoring spatially explicit and mechanistic information (Mayorga et al., 2010; Seitzinger et al., 2010). Although providing useful data on present-day nutrient loadings and deliveries to the ocean, these statistical models do not allow hindcasting or forecasting of nutrients in freshwater systems. In order to better understand, attribute the causes of changing biogeochemistry and more accurately project future trends in riverine nutrient loadings and ratios, it is pivotal to use modelling tools that resolve spatial and temporal variability of nutrient inputs, that accommodate changes in hydrology and that include nutrient transformation and retention processes.

The objective of this study is to analyze global long-term changes in the delivery and retention of N and P during transport from land to sea using the Integrated Model to Assess the Global Environment – Global Nutrient Model (IMAGE-GNM) (Beusen et al., 2015). We analyze the relative importance, trends and spatial variability of nutrient retention in the various landscape components in different parts of the world during the 20th century, as this period encompasses dramatic changes in human population and economic activities. We also investigate the temporal changes in total N versus total P, as this ratio controls the biogeochemistry and the functioning of aquatic ecosystems (Billen et al., 1991). This paper thus presents the first gridded (0.5 by 0.5 degree) approach to track and quantify N and P cycling throughout the

continental aquatic system. Our model includes the interactions between human-induced changes in climate, hydrology and nutrient loading. The hydrological system incorporates a distributed river model that merges both terrestrial and aquatic aspects and includes groundwater and upland areas, wetlands, riparian zones and floodplains, and reservoirs. The data discussed in this paper are available from <http://dx.doi.org/10.17026/dans-zgs-9k9m>. This includes modelled N and P river input, retention and export for all rivers in our model (grid information), as well as modelled river export per river in table format.

2. Data and methods

The IMAGE-Global Nutrient Model (IMAGE-GNM) (Beusen et al., 2015) is a global, spatially explicit, distributed model that couples IMAGE (Stehfest et al., 2014) with the global hydrological model PCR-GLOBWB (Van Beek et al., 2011) as the basis for describing flow and retention/removal of N and P delivery from soils to surface waters. IMAGE-GNM can study the impact of multiple environmental changes over prolonged time periods. Next to existing tools for estimating N delivery to surface water (Van Drecht et al., 2003; Bouwman et al., 2013a), IMAGE-GNM now includes models for (i) P delivery from natural and agricultural ecosystems, (ii) nutrient input from allochthonous organic material from vegetation in floodplains, (iii) N and P delivery by wastewater discharge from urban areas and aquaculture, and (iv), IMAGE-GNM uses the nutrient spiraling approach (Newbold et al., 1981) to describe in-stream retention of both N and P with a yearly time step (following Wollheim et al., 2008). A detailed description of IMAGE-GNM is given in Beusen et al. (2015), with additional validations provided in Supplementary Materials.

The data flows in IMAGE-GNM including PCR-GLOBWB are presented in Figure 1a. Spatial land cover distributions for the 20th century are from HYDE (Klein Goldewijk et al., 2010) and IMAGE (1970 onwards). Global climate data are used in PCR-GLOBWB for computing the water balance, runoff and discharge for each year. For each grid cell, IMAGE-GNM provides the delivery of N and P to the surface water via diffuse sources (agriculture, natural ecosystems, aquaculture) and point sources (wastewater) (Figure 1b). Soil nutrient budgets (the difference between inputs and outputs) are calculated for each grid cell (Figure 1b). Nitrogen inputs considered are fertilizer, animal manure, atmospheric deposition and biological N fixation. Phosphorus inputs are fertilizer and animal manure. Nutrient outputs are withdrawal by agricultural crops in harvested parts and by grazing or mowing of grass and ammonia volatilization. Natural ecosystems are assumed to be mature (i.e. net withdrawal is zero), except for vegetation in floodplains where part of the litter is transported by the water.

Each grid cell receives water containing N and P from upstream grid cells, and from diffuse and point sources within the grid cell. After accounting for in-stream retention, water and nutrients are transported to downstream grid cells. Discharge is routed to obtain the accumulated water and nutrient flux in each grid cell, through rivers, lakes, wetlands and reservoirs (Figure 1c). The model accounts for the “memory” of groundwater, where travel times may amount to several decades. Cumulative N storage in deep groundwater between 1900 and 2000 amounted to around 376 Tg (Bouwman et al., 2013a). The retardation due to this cumulative reservoir varies considerably depending on the history of fertilizer use and manure management, as well as the geohydrological situation and climate (Van Drecht et al., 2003). In addition, the soil component has a memory, which

is the change in soil P content due to accumulation in grid cells with a surplus, or loss due to surface runoff.

145

We compare the model sensitivity for three years (1900, 1950 and 2000) because with human acceleration of the global N and P cycles, the magnitude and relative importance of the different natural and anthropogenic nutrient sources changes.

Moreover, nutrient processing within aquatic systems may change with nutrient loadings (Soetaert et al., 2006). The model sensitivity was investigated using Latin Hypercube Sampling, with uncertainty ranges for 48 model parameters for N and 34 for P (Table SI 3), respectively, and expressed using the standardized regression coefficient (SRC), to compare model output of N and P delivery, retention, and river export to the river mouth. A detailed description of the approach for the sensitivity analysis is in SI3.4.

155

3. Results and discussion

Before presenting and discussing model outcomes at the continental to global scale in detail, we compare local model predictions with observed data. Beusen et al. (2015)

160 compared model results with the discharge-weighted annual mean calculated from long-term time series (from 1970 onwards to most recent years, depending on the station) of observed concentrations and discharge for 125 European rivers, and for the Mississippi river (11 stations), and the rivers Rhine and Meuse. In this paper we show details of the model predictions and compare those with long-term time series for
165 stations in the Danube in Hungary, Missouri in the USA and Ångermanälven in Sweden (Figure 2). Simulated trends and interannual variability of nutrient concentrations for these stations show good agreement with reported concentrations.

In general, the Root Mean Square Error (RMSE) for observed versus modelled total N and total P concentrations was less than 50%, which was considered acceptable for model predictions at the global scale (Beusen et al., 2015). There are various possible explanations for the larger model and observation discrepancies (RMSE>50%),. First, with an annual time step the model is not able to reproduce peaks in measurements. Accordingly, if these peaks were actually covering only a short period, the calculated annual aggregate from the measurements may be an overestimate, especially if the number of measurements in a year is small. Secondly, in small river basins the spatial data for both diffuse and point sources of the IMAGE model (0.5 by 0.5 degree) may not be realistic, particularly wastewater which is assumed to be discharged in all urban grid cells of the model, while in reality discharge takes place at discrete locations (e.g. wastewater treatment plants). Beusen et al. (2015) subjectively excluded river basins from the comparison with European data with a basin area <math><10,000 \text{ km}^2</math>, which is about four grid cells for our 0.5 by 0.5 degree resolution.

After this validation with long time series for a range of stations in rivers differing in size, climate and geological setting, we are confident that our model can simulate fluxes at the scale of continents or oceans with reasonable accuracy. We applied our IMAGE-GNM to calculate the changes in the continental and global nutrient flows for the twentieth century. The next sections present the temporal variation in nutrient sources (3.1), nutrient retention in rivers (3.2), nutrient export to coastal marine ecosystems (3.3), and the model sensitivity with changing anthropogenic acceleration of nutrient cycles (3.4). Finally results are put in perspective in section 3.5.

3.1. Temporal variations in nutrient sources

Expanded agricultural activity and the concomitant rise in fertilizer usage have dramatically increased the global soil N budget, even with the massive deforestation and subsequent reduction in N₂ fixation. These changes are particularly evident after 1950, especially in the basins that drain toward the Pacific Ocean, where the soil N budget saw a more than threefold increase, and for those draining in the Mediterranean Sea and the Black Sea, where they more than doubled. The rise in P has been even more dramatic. The global P soil budget in 1900 was only 5% of that in 2000 and was negative in many places (i.e. soils mining or deficit), but became positive (i.e. soil P accumulation or surplus) in the aforementioned basins by 1940 (Bouwman et al., 2013c). The N:P ratio in fertilizers has been increasing since the 1970s (FAO, 2015). However, this change has been compensated by the expansion of livestock production, which produces high-P manure (Bouwman et al., 2013c). Soil P surpluses accumulate as residual soil P in many regions, especially near industrialized countries, India, and China, where it can stimulate future crop and grass production (Sattari et al., 2012).

Agriculture has grown to become the dominant nutrient source to the surface waters at a global scale. From 1900 to 2000 its contribution rose from 6 Tg N yr⁻¹ (19% of total) to 33 Tg N yr⁻¹ (51% of total) and from 2 Tg P yr⁻¹ (35% of total) to 5 Tg P yr⁻¹ (56% of total). This contrasts starkly with the contribution from natural sources, which has shown a decrease of 25 to 22 Tg N yr⁻¹ (from 74% to 34% of the total N delivery), while P from natural sources was stable at 3 Tg P yr⁻¹ (but its share decreased from 62% to 32% of the total P delivery), during the same time period. Global N delivery to surface water increased from 43 to 67 Tg yr⁻¹, and global P delivery from 5 to 9 Tg yr⁻¹ (Figure 3). Similar to the soil budgets, the nutrient

increase has been most pronounced for the basins draining into the Pacific Ocean, the Indian Ocean, and Mediterranean Sea and Black Sea. Basins draining into the Indian
220 Ocean are close to the global average (~90% increase), while those draining in the Arctic Ocean, the Atlantic Ocean and endorheic rivers increase more slowly than the global average (Figure SI2, SI3 and Movie SI1, SI2).

While the modeled global increase of nutrient delivery was steady, similar to the
225 Atlantic and Indian Ocean, the delivery accelerates after the 1970s in the Pacific Ocean and Indian Ocean. Delivery to the Atlantic Ocean slowed down after 1970, whereas delivery decreases after 1980 in the Arctic Ocean, Mediterranean Sea and Black Sea and endorheic rivers (Movies SI1 and SI2). These patterns reflect the changes in the contribution of the various sources. Globally, the simulated
230 contribution of natural vegetation in floodplains is large and almost constant in absolute terms, but its relative share decreased due to increases in other sources (Movie SI3 and SI4). Most increases came from diffuse sources, i.e. globally from 31 to 54 Tg N yr⁻¹ and from 5 to 8 Tg P yr⁻¹. The delivery by diffuse sources to the Pacific Ocean (30% for N, 29% for P) and Atlantic Ocean (43% for N and 31% for P)
235 contributed to a large share of global diffuse delivery in 2000. Globally, the relative increase between 1900 and 2000 was more rapid for N (73%) than for P (69%), and more rapid for rivers draining into the Pacific Ocean (225% for N and 119% for P) than for all other rivers. Rivers draining into the Atlantic showed a slower increase (28% for N, 37% for P) than the global average. The changes in the Indian Ocean and
240 Mediterranean Sea and Black Sea are similar to the global average.

The contribution of agriculture (surface runoff, groundwater) increased most in the regions draining into the Pacific Ocean (1 Tg yr⁻¹ or 20% of the total N delivery in 1900 to 13 Tg yr⁻¹ or 64% in 2000) and Indian Ocean (1 Tg per yr⁻¹ or 32% of total delivery to 5 Tg yr⁻¹ or 59%, Figure SI2 and SI3). Agriculture is an important N source in the Mediterranean region (44% in 1900 to 57% in 2000 with a peak in the 1980s). Large rivers such as the Amazon and Congo dominate delivery to the Atlantic Ocean, and natural ecosystems are important sources (82% of total N delivery in 1900, decreasing to 51% in 2000). Surface runoff is a very large source of N and P globally (16% of total delivery in 1900 and 22 in 2000 for N; 51% in 1900 and 62% in 2000 for P), particularly to the Mediterranean Sea, Indian Ocean and Pacific Ocean, but less so to the Atlantic Ocean.

Delivery of N and P by aquaculture showed a dramatic increase after 1950, but remains small compared to diffuse and natural sources. Atmospheric deposition also increased, but its contribution also remains small. Locally, however, aquaculture and atmospheric N deposition may be important and even dominant (Movies SI3 and SI4).

The world has also experienced a remarkable increase in nutrient point sources (Van Drecht et al., 2009; Moree et al., 2013, Figure SI2 and SI3 and Movies SI3 and SI4). Globally, the contribution of point source delivery increased from 4-5% in 1900 to 12% in 2000 for both N and P, in absolute terms from 2 to 8 Tg N yr⁻¹ (+340%) and from 0.2 to 1 Tg P yr⁻¹ (+500%) between 1900 and 2000. The increase is slightly lower than the global average in most regions, but for the basins draining into the Pacific Ocean (factor of 12 for N and 17 for P) and Indian Ocean (factor of 39 for N and 50 for P) the increase is much more rapid. In most regions point sources

contribute 12% or less to total N delivery except for basins draining to the Mediterranean Sea and the Black Sea, and also for endorheic river basins (26% and 17%, respectively).

270

The molar N:P ratio of total nutrient delivery showed small variations in the course of time in most parts of the world (globally 14-16; Arctic Ocean 13-15; Atlantic Ocean 20-23; Indian Ocean 11-13; Mediterranean Sea and Black Sea 9-11; endorheic rivers 8-11, Figure SI4). However, the changes were much larger in the Pacific Ocean (constant at 11-13 in the first half of the century, and an increase to 17 from 1960 onwards).

275

3.2. N and P retention in rivers

Nutrient removal/retention (here forth referred to as retention) doubled between 1900 and 2000 (from 14 to 27 Tg yr⁻¹ for N and 2.6 to 5 Tg yr⁻¹ for P) at the global scale.

280

In-stream retention increased much more in the Indian Ocean drainage basins (from 1.7 to 4.5 Tg N, or +157%; from 0.5 to 1 Tg P or +126%) and Pacific Ocean drainage basins (from 1.8 to 5.5 Tg N, or +212% for N; from 0.4 to 1.1 Tg P or +157%)

regions. In the regions draining into the Atlantic Ocean (where natural nutrient

285

sources dominate), N removal increased from 8 to 11 Tg N yr⁻¹ and that of P 0.9 to 1.5 Tg yr⁻¹. The retention fraction was rather constant (globally 41-45% of total delivery

for N, and 53-58% for P) during the 20th century (Figure 4). There are large differences in the retention in the regions draining into Mediterranean Sea and Black Sea (43-50% for N; 50-62% for P), Indian Ocean (37-52% for N; 53-66% for P),

290

Pacific Ocean (28-32% for N; 37-42 for P), Atlantic Ocean (38-45% for N; 48-55% for P), with an increase in Atlantic and Indian regions in the last decades.

Total nutrient retention is the net result of retention in streams and rivers, lakes and reservoirs. N and P retention in streams and rivers has the largest contribution to total retention in all parts of the world, except endorheic systems. In 1900, rivers
295 contributed 75% to total N retention of 14 Tg yr⁻¹ and 82% of total P retention of 2.1 Tg yr⁻¹ for P. In 2000, rivers accounted for 54% of the total N retention of 27 Tg yr⁻¹, and 63% of the total P retention of 5 Tg yr⁻¹. The global contribution of lakes decreased from 25% to 22% of total retention between 1900 and 2000, and that of P
300 from 18% to 15%. Between 1900 and 2000, global retention in rivers increased from 10.7 to 14.6 Tg N (+37%) and from 2.1 to 3.2 Tg P (+51%), while the retention in lakes (3.6 to 6 Tg N yr⁻¹ and 0.5 to 0.7 Tg P yr⁻¹) increased by 63% for both N and P.

Reservoirs played no role up until the 1940s (retention of 1% of total retention of N
305 and P) and strongly increased in the second half of the 20th century to 24% of total N and 22% of total P retention. In the year 2000, rivers draining into the Mediterranean Sea and Black Sea retained more N (36% of total N retention of 2 Tg yr⁻¹) and P (29% of P retention of 0.5 Tg yr⁻¹) than the global average due to the importance of retention in reservoirs.

310

Total N and P retention in rivers draining into the Pacific Ocean is less than the global average. Reservoirs play a smaller role in this part of the world, and also rivers and lakes retain fewer nutrients than elsewhere. The total N retention fraction slowly decreased due to the effect of increasing N concentrations in surface water, while the
315 P retention fraction was less variable due to increasing retention in reservoirs,

balancing the decreasing river retention (as a result of regulation of discharge downstream of dams).

3.3. N and P export to coastal marine ecosystems

320 In the 20th century the global river N export (19 to 37 Tg yr⁻¹, or +90%) showed a
faster increase than P export (2 to 4 Tg yr⁻¹ or +75%). The increase in export by rivers
draining into the Pacific Ocean (3.7 to 14.7 Tg N yr⁻¹, increase by a factor of 4; 0.6 to
1.6 Tg P yr⁻¹, factor of 1.5) and Mediterranean Sea and Black Sea (0.9 to 2.1 Tg N yr⁻¹,
+126%; 0.2 to 0.4 Tg P yr⁻¹, +80%) was much faster than in other parts of the
325 world (Figure 5). The increase in P export was smaller than that of N in world
regions. The differential increase of N and P explains the increase in the N:P ratio in
rivers draining into the Pacific Ocean (13 to 20), Indian Ocean (14 to 18 since 1970),
Mediterranean Sea and Black Sea (10 to 13). There was no clear increase in the
regions draining into the Atlantic Ocean (Figure SI5).

330

3.4. Model sensitivity as a function of human acceleration of nutrient cycles

A detailed discussion of the model sensitivity for the year 2000 has been presented in
Beusen et al. (2015). Here we focus on the impact of the acceleration of nutrient
cycles during the twentieth century on the model's sensitivity to changes in parameter
335 values. Most parameters were varied within an interval of $\pm 10\%$ around the default
value. We consider parameters to have an important influence when they are
significant for global delivery, retention or river export, and in addition, they exert a
variation $>4\%$ of the default model (Tables SI4 for N and SI5 for P).

340 The influence of the natural ecosystem N budget on N delivery was clearly decreasing
from 1900 onwards (SRC decrease from 0.38 to 0.20) and was only important (0.21)
for river N export in 1900. Likewise, allochthonous organic matter input was more
important for N delivery in 1900 and 1950 than in 2000. It even exerts an important
yet decreasing influence on river N export throughout the 20th century. P from
345 allochthonous organic matter inputs was important for delivery and river export in
1900 (SRC = 0.23-0.24) while it was less important in 1950 and 2000. Weathering
was important for P delivery in 1900 (SRC = 0.27) and 1950 (SRC = 0.23), and for
river export in 1900 (0.21). P weathering is no longer important in the year 2000 due
to the increasing delivery of P from fertilized fields and grazing land, and wastewater.

350

With a much smaller human population, less food and energy production in 1900 and
1950, the situation was different from the year 2000. Runoff had a smaller influence
in the first half of the twentieth century than in the year 2000. Apparently, surface
runoff was an important process for nutrient mobilization through leaching (N),
355 surface runoff (N and P) and weathering (P) throughout the century. The influence of
the agricultural N budget has been growing and became important in 2000, when its
influence on N delivery to streams (SRC = 0.26) exceeded that of the N budget in
natural ecosystems (SRC = 0.20). The influence of the P budget in agricultural fields
has also been growing but remained an unimportant factor (SRC values < 0.20). The
360 influence of the factors involved in the computation of P erosion (bulk density and P
content of topsoil) was large in all years (SRC change from -0.54 to -0.63 for bulk
density and 0.55 to 0.63 for P content between 1900 and 2000). This influence has
been growing due to the increasing P inputs (fertilizer, manure) which partly

determine P surface runoff, and due to the accumulation of P in agricultural soils in
365 many world regions, particularly during the second half of the twentieth century.

The influence of N and P discharge from wastewater on the global scale was small
(SRC >0.2 only for P discharge in 2000) compared to other anthropogenic sources
such as agriculture. The data show that with smaller population densities in 1900 and
370 1950 as compared to 2000, wastewater also exerted a smaller influence on the
delivery of both N and P in the first half of the twentieth century than in the year
2000. Finally, temperature has a large influence on in-stream retention (SRC values of
0.34-0.41 for N and 0.21-0.27 for P) and river N export (SRC values of 0.30-0.36).

375 **3.5. Results in perspective**

Global estimates of current river N export vary widely, ranging from about 60 Tg N
yr⁻¹ (Seitzinger et al., 2005; Boyer et al., 2006) to 43 Tg N yr⁻¹ (Global NEWS,
Seitzinger (2010) and close to 40 Tg N yr⁻¹ (Green et al., 2004). A previous version of
our model with a constant global export coefficient yielded estimates of 54 Tg N yr⁻¹
380 (Van Drecht et al., 2003) and 46 Tg N yr⁻¹ (Bouwman et al., 2005). Our global river N
export for 2000 of 36.5 Tg N yr⁻¹ is on the low end of the range of estimates.

Although the correlation of model predictions with total N concentration data for the
early 1990s (Meybeck and Ragu, 1995) is better than with earlier versions of our
model (Van Drecht et al., 2003), it is difficult to validate the global estimate, since the
385 number of rivers included in this dataset is small.

Our model for N retention based on the spiraling concept is more sophisticated than
earlier versions with a fixed retention rate of 30% (Van Drecht et al., 2003). Our

global average N retention (43%) is larger, mainly due to the implementation of sub-
390 grid retention in lower order streams. Moreover, our model accounts for heterogeneity
due to hydrology, climate and N concentration. Our calculated N retention is less than
the 53% computed with the spiraling concept globally by Wollheim et al. (2008). This
disagreement may be due to differences in hydrology, N delivery and its spatial
distribution. It is difficult to compare retention among models, since it also depends
395 on the delivery to surface water. For example, Hejzlar et al. (2009) found in a model
comparison that the simulated N and P retention showed larger differences among the
models than between rivers.

To our knowledge, there is no global model for P river transport that includes in-
400 stream processing available for comparison. Simulated global P export with our
model (4 Tg P yr⁻¹) is much less than the Global NEWS estimate (9 Tg P yr⁻¹)
(Seitzinger et al., 2010) and the 22 Tg P yr⁻¹ estimated by Meybeck (1982) based on
data for a limited number of rivers. Our model results are in fair agreement with a
much larger number of rivers. Given the amount of each of the P sources and the
405 range of uncertainty for each of them, global estimates for river P export exceeding 10
Tg yr⁻¹ seem unrealistic.

In-stream biogeochemistry is simulated with separate uncoupled models for N and P,
as different processes dominate N and P retention, i.e. denitrification and chemical
410 sorption. Only in case of plant uptake and decomposition and mineralization is there a
close coupling of N and P (and C and Si). Simulated P retention reflects sorption of P
in reservoir, lake, and stream, and river sediments. Nevertheless, IMAGE-GNM lacks
a description of desorption processes in the case of exchange between the water

column and P-saturated sediment material (Reddy et al., 1999; Richardson and Qian,
415 1999).

Particularly in the early 1900s, agricultural N and P soil budgets were small and for P
even negative (Mediterranean and Pacific regions), P loss by surface runoff has
caused a considerable depletion of soil P. Even in 2000, the delivery to streams of N
420 and P from agricultural sources is a considerable fraction (40% for N and 34% for P)
of global fertilizer use. N is very mobile in the environment, and there are various
transport ways from soil to surface water (surface runoff, leaching, groundwater). P is
lost primarily by surface runoff. In agricultural soils, the P loss is larger than in
natural soils due to the internal manure cycle, such as grazing animals and manure
425 spreading in cropland and grassland (Smil, 2000).

About 56% of the global N retention of 27 Tg yr^{-1} in 2000 stems from agriculture.
This implies that the equivalent of 17% of global fertilizer use of 81 Tg N was
removed from the aquatic environment in global river basins. P retention is similarly
430 about 20% of the global P use in 2000. Rivers transport the equivalent of about 23%
of global fertilizer N and 15% of fertilizer P each year. Our data show that there is an
enormous discrepancy in the development of N versus P fertilizer use. World
consumption of N fertilizer rapidly increased from 10 Tg to 95 Tg N per year
(increase by a factor of 10), while P fertilizer increased from 4.5 to close to 16 Tg P
435 per year (increase by a factor of 3.5). The molar N:P ratio increased from 5 to 13
during the 5 decades period of 1960-2010 (FAO, 2015). The N:P river ratios exported
to the ocean are often much larger, indicating that during processing and transport

in soils, groundwater, riparian zones and streams, rivers, lakes and reservoirs, P is retained more efficiently than N.

440

Finally, many phytoplankton species causing harmful algal blooms take advantage from conditions of distorted nutrient conditions such as N:P away from the Redfield ratios (Glibert et al., 2014). Hence, our results point to a worldwide ongoing increase in N:P ratios in surface water, and with the simultaneous decrease in silicon export by rivers, non-siliceous harmful algae are increasingly favored in both freshwater and coastal marine ecosystems (Heisler et al., 2008;Glibert et al., 2012).

4. Concluding remarks

This paper presents the first global, spatially explicit modeling approach based on coupled hydrology, nutrient delivery to surface water, in-stream retention of N and P, that explicitly includes all major nutrient sources in aquatic ecosystems. Nutrient delivery includes diffuse sources (cultivated land and natural ecosystems, allochthonous biomass inputs in river floodplains, weathering, atmospheric deposition) and point sources (wastewater, aquaculture). Delivery is calculated for the full twentieth century to simulate river nutrient retention and transport to the oceans. Model results without specific calibration are in good agreement with time series of concentration measurements for a number of large and smaller rivers for which we could obtain measurement data.

460 While the regression models commonly used to estimate river nutrient export (Mayorga et al., 2010;Seitzinger et al., 2010) can provide information on the present-day transport of nutrients to the ocean, our coupled model can also be used to explore

changes in various processes and interactions between them during the 20th century.

We portray the dramatic changes that occurred during the 20th century in both

465 delivery and in-stream retention due to expanding agriculture, increasing wastewater discharge, and increasing number of reservoirs..

Nutrient losses from agriculture and natural areas imply a constant flow of soil

nutrients to the surface water and eventually to the oceans. The model results indicate

470 important differences in N:P ratios in river export in different parts of the world

resulting from the interplay of many processes and economic activities in different

river basins. River export shows a world-wide increase in the molar N:P ratio during

recent decades, primarily as a result of the stagnating P fertilizer and ever increasing

N fertilizer use.

475

During the twentieth century, the type of parameters and their influence on the model

results have changed as a consequence of the human acceleration of the global N and

P cycles. In the first half of the twentieth century, natural sources (N₂ fixation,

weathering, allochthonous organic matter inputs, weathering) were more important for

480 the model sensitivity than in the second half of the century. This reflects both a

decrease of natural sources in absolute terms due to deforestation, and also a decrease

in relative terms due to the stark increase in N and P sources (agriculture,

wastewater).

485 Increasing river export is responsible for eutrophication of coastal marine ecosystems

leading to increased production and hypoxia (Diaz and Rosenberg, 2008) and

changing nutrient stoichiometry may lead to harmful algal blooms (Heisler et al.,

2008). Past impacts of nutrients on ecosystems, and their future effects, require coupling our model to coastal biogeochemistry models.

490

A first simple improvement of the in-stream model would be to add P saturation of sediments and desorption in case of decreasing river P loads. A next, larger step is the incorporation of a mechanistic model for describing in-stream biogeochemical processes. This will allow further scrutiny of individual processes and their interplay (plant uptake, sedimentation, diagenetic processes, denitrification). Simulating these processes in addition to different forms of P and N will furthermore refine our understanding of the nutrient impacts on the environment, and their relation to harmful algal blooms, blue-green algae and hypoxia.

500 **Acknowledgements**

This paper was supported by the Water, Climate and Ecosystems project, part of the Sustainability strategic theme of Utrecht University (<http://wce.uu.nl/>), and contributes to the Netherlands Earth System Science Centre (NESSC, <http://www.nessc.nl/>). We gratefully acknowledge financial support from the Global Environment Facility (GEF), United Nations Environment Programme (UNEP), Intergovernmental Oceanographic Commission of the UNESCO (IOC/UNESCO) and other partners through the UNEP/GEF project "Global Foundations for Reducing Nutrient Enrichment and Oxygen Depletion from Land-based Pollution in Support of Global Nutrient Cycle" (GNC project). Additional funding was provided by the EU H2020 (MSCA award 661163 to J. M. Mogollón). The data discussed in this paper are available from <http://dx.doi.org/10.17026/dans-zgs-9k9m>. This includes modelled N and

P river input, retention and export for all rivers in our model (grid information), as well as modelled river export per river.in table format.

515 **References**

- Beusen, A. H. W., Van Beek, L. P. H., Bouwman, A. F., Mogollón, J. M., and Middelburg, J. J.: Coupling global models for hydrology and nutrient loading to simulate nitrogen and phosphorus retention in surface water. Description of IMAGE-GNM and analysis of performance, Geoscientific Model Developmen Discussions (at <http://www.geosci-model-dev-discuss.net/8/7477/2015/>), doi:10.5194/gmdd-8-7477-2015, 2015.
- 520 Billen, G., Lancelot, C., and Meybeck, M.: N, P, and Si retention along the aquatic continuum from land to ocean, in: Ocean margin processes in global change, edited by: Mantoura, R. F. C., Martin, J. M., and Wollast, R., John Wiley and Sons, New York, 19-44, 1991.
- 525 Bouwman, A. F., Van Drecht, G., Knoop, J. M., Beusen, A. H. W., and Meinardi, C. R.: Exploring changes in river nitrogen export the the world's oceans, Global Biogeochemical Cycles, 19, GB1002, doi:1010.1029/2004GB002314, 2005.
- Bouwman, A. F., Beusen, A. H. W., Griffioen, J., Van Groenigen, J. W., Hefting, M. M., Oenema, O., Van Puijenbroek, P. J. T. M., Seitzinger, S., Slomp, C. P., and Stehfest, E.: Global trends and uncertainties in terrestrial denitrification and N₂O emissions, 530 Philosophical Transactions of the Royal Society B: Biological Sciences, 368, 10.1098/rstb.2013.0112, 2013a.
- Bouwman, A. F., Bierkens, M. F. P., Griffioen, J., Hefting, M. M., Middelburg, J. J., Middelkoop, H., and Slomp, C. P.: Nutrient dynamics, transfer and retention along 535 the aquatic continuum from land to ocean: towards integration of ecological and biogeochemical models, Biogeosciences, 10, 1-22, 10.5194/bg-10-1-2013, 2013b.
- Bouwman, A. F., Klein Goldewijk, K., Van der Hoek, K. W., Beusen, A. H. W., Van Vuuren, D. P., Willems, W. J., Rufino, M. C., and Stehfest, E.: Exploring global changes in

- nitrogen and phosphorus cycles in agriculture induced by livestock production over
540 the 1900-2050 period, Proceedings of the National Academy of Sciences of the
United States of America, 110, 20882-20887, doi/20810.21073/pnas.1012878108,
2013c.
- Boyer, E. W., Howarth, R. W., Galloway, J. N., Dentener, F. J., Green, P. A., and
Vörösmarty, C. J.: Riverine nitrogen export from the continents to the coasts, Global
545 Biogeochemical Cycles, 20, 2006.
- Butcher, R. W.: Studies in the ecology of rivers: VII. The algae of organically enriched
waters, Journal of Ecology, 35, 186-191, 1947.
- Cloern, J. E.: Phytoplankton bloom dynamics in coastal ecosystems: A review with some
general lessons from sustained investigation of San Francisco Bay, California,
550 Review of Geophysics, 34, 127-168, 1996.
- Diaz, R. J., and Rosenberg, R.: Spreading dead zones and consequences for marine
ecosystems, Science, 321, 926-929 (doi: 910.1126/science.1156401), 2008.
- Dodds, W. K.: Freshwater ecology: concepts and environmental applications, Academic
Press, San Diego, 2002.
- 555 FAO: FAOSTAT database collections (<http://faostat3.fao.org/home/E>). Retrieved 10 March
2015, Food and Agriculture Organization of the United Nations, Rome, 2015.
- Galloway, J. N., Schlesinger, W. H., Levy_III, H., Michaels, A., and Schnoor, J. L.: Nitrogen
fixation: anthropogenic enhancement-environmental response, Global
Biogeochemical Cycles, 9, 235-252, 1995.
- 560 Glibert, P. M., Burkholder, J. M., and Kana, T. M.: Recent insights about relationships
between nutrient availability, forms, and stoichiometry, and the distribution,
ecophysiology, and food web effects of pelagic and benthic *Prorocentrum* species,
Harmful Algae, 14, 231-259, 2012.
- Glibert, P. M., Maranger, R., Sobota, D. J., and Bouwman, L.: The Haber Bosch-harmful
565 algal bloom (HB-HAB) link, Environmental Research Letters, 9, 2014.

- Green, P., Vörösmarty, C. J., Meybeck, M., Galloway, J. N., Petersen, B. J., and Boyer, E. W.: Pre-industrial and contemporary fluxes of nitrogen through rivers: a global assessment based on typology, *Biogeochemistry*, 68, 71-105, 2004.
- 570 Heisler, J., Glibert, P. M., Burkholder, J. M., Anderson, D. M., Cochlan, W., Dennison, W. C., Dortch, Q., Gobler, C. J., Heil, C. A., Humphries, E., Lewitus, A., Magnien, R., Marshall, H. G., Sellner, K., Stockwell, D. A., Stoecker, D. K., and Suddleson, M.: Eutrophication and harmful algal blooms: a scientific consensus, *Harmful Algae*, 8, 3-13, 2008.
- 575 Hejzlar, J., Anthony, S., Arheimer, B., Behrendt, H., Bouraoui, F., Grizzetti, B., Groenendijk, P., Jeuken, M. H. J. L., Johnsson, H., Lo Porto, A., Kronvang, B., Panagopoulos, Y., Siderius, C., Silgram, M., Venohr, M., and Zaloudik, J.: Nitrogen and phosphorus retention in surface waters: an inter-comparison of predictions by catchment models of different complexity, *Journal of Environmental Monitoring*, 11, 584–593, 2009.
- 580 Klein Goldewijk, K., Beusen, A., van Drecht, G., and de Vos, M.: The HYDE 3.1 spatially explicit database of human induced land use change over the past 12,000 years, *Global Ecology and Biogeography*, in press, 2010.
- 585 Lehner, B., Liermann, C. R., Revenga, C., Vörösmarty, C., Fekete, B., Crouzet, P., Döll, P., Endejan, M., Frenken, K., Magome, J., Nilsson, C., Robertson, J. C., Rödel, R., Sindorf, N., and Wisser, D.: High-resolution mapping of the world's reservoirs and dams for sustainable river-flow management, *Frontiers in Ecology and the Environment*, 9, 494-502, 10.1890/100125, 2011.
- 590 Mayorga, E., Seitzinger, S. P., Harrison, J. A., Dumont, E., Beusen, A. H. W., Bouwman, A. F., Fekete, B. M., Kroeze, C., and Van Drecht, G.: Global Nutrient Export from WaterSheds 2 (NEWS 2): Model development and implementation, *Environmental Modelling and Software*, 25, 837-853, 2010.
- Meybeck, M.: Carbon, nitrogen and phosphorous transport by world rivers, *American Journal of Science*, 282, 401-450, 1982.

- Meybeck, M., and Ragu, A.: River discharges to oceans: An assessment of suspended solids, major ions and nutrients, United Nations Environment Programme (UNEP), 245, 595 1995.
- Morée, A. L., Beusen, A. H. W., Bouwman, A. F., and Willems, W. J.: Exploring global nitrogen and phosphorus flows in urban wastes during the twentieth century, *Global Biogeochemical Cycles*, 27, 1–11, doi:10.1002/gbc.20072, 10.1002/gbc.20072, 2013.
- Mulholland, P. J., Helton, A. M., Poole, G. C., Hall, R. O., Hamilton, S. K., Peterson, B. J., 600 Tank, J. L., Ashkenas, L. R., Cooper, L. W., Dahm, C. N., Dodds, W. K., Findlay, S. E. G., Gregory, S. V., Grimm, N. B., Johnson, S. L., McDowell, W. H., Meyer, J. L., Valett, H. M., Webster, J. R., Arango, C. P., Beaulieu, J. J., Bernot, M. J., Burgin, A. J., Crenshaw, C. L., Johnson, L. T., Niederlehner, B. R., O'Brien, J. M., Potter, J. D., Sheibley, R. W., Sobota, D. J., and Thomas, S. M.: Stream denitrification across 605 biomes and its response to anthropogenic nitrate loading, *Nature*, 452, 202-205, http://www.nature.com/nature/journal/v452/n7184/supinfo/nature06686_S1.html, 2008.
- Newbold, J. D., Elwood, J. W., O'Neill, R. V., and Winkle, W. V.: Measuring nutrient spiraling in streams, *Canadian Journal of Fisheries and Aquatic Sciences*, 38, 860- 610 863, 1981.
- Reddy, K. R., Kadlec, R. H., Flaig, E., and Gale, P. M.: Phosphorus retention in streams and wetlands: A review, *Critical Reviews in Environmental Science and Technology*, 29, 83 - 146, 1999.
- Richardson, C. J., and Qian, S. S.: Long-term phosphorus assimilative capacity in freshwater 615 wetlands: A new paradigm for sustaining ecosystem structure and function, *Environmental Science and Technology*, 33, 1545-1551, 10.1021/es980924a, 1999.
- Sattari, S. Z., Bouwman, A. F., Giller, K. E., and van Ittersum, M. K.: Residual soil phosphorus as the missing piece in the global phosphorus crisis puzzle, *Proceedings of the National Academy of Sciences*, 109, 6348-6354, 10.1073/pnas.1113675109, 620 2012.

- Seitzinger, S. P., Harrison, J. A., Dumont, E., Beusen, A. H. W., and Bouwman, A. F.:
Sources and delivery of carbon, nitrogen, and phosphorus to the coastal zone: an
overview of Global NEWS models and their application, *Global Biogeochemical
Cycles*, 19, GB4S01, 10.1029/2004GB002606, 2005.
- 625 Seitzinger, S. P., Mayorga, E., Bouwman, A. F., Kroeze, C., Beusen, A. H. W., Billen, G.,
Van Drecht, G., Dumont, E., Fekete, B. M., Garnier, J., and Harrison, J. A.: Global
river nutrient export: A scenario analysis of past and future trends, *Global
Biogeochemical Cycles*, 24, GB0A08, 10.1029/2009gb003587, 2010.
- Smil, V.: Phosphorous in the environment: natural flows and human interferences, *Annual
630 Review of Energy and the Environment*, 25, 25-53, 2000.
- Soetaert, K., Middelburg, J. J., Heip, C., Meire, P., Van Damme, S., and Maris, T.: Long-term
change in dissolved inorganic nutrients in the heterotrophic Scheldt estuary (Belgium,
The Netherlands), *Limnology and Oceanography*, 51, 409–423, 2006.
- Stehfest, E., Van Vuuren, D. P., Kram, T., and Bouwman, A. F.: Integrated Assessment of
635 Global Environmental Change with IMAGE 3.0. Model description and policy
applications, in, PBL Netherlands Environmental Assessment Agency
(http://themasites.pbl.nl/models/image/index.php/Main_Page), The Hague, 2014.
- Stumm, W.: The acceleration of the hydrogeochemical cycling of phosphorus, *Water
Research*, 7, 131-144, 10.1016/0043-1354(73)90158-9, 1973.
- 640 Van Beek, L. P. H., Wada, Y., and Bierkens, M. F. P.: Global monthly water stress: 1. Water
balance and water availability, *Water Resour. Res.*, 47, W07517,
10.1029/2010wr009791, 2011.
- Van Drecht, G., Bouwman, A. F., Knoop, J. M., Beusen, A. H. W., and Meinardi, C. R.:
Global modeling of the fate of nitrogen from point and nonpoint sources in soils,
645 groundwater and surface water, *Global Biogeochemical Cycles*, 17, 1115,
doi:10.1029/2003GB002060, 2003.

Van Drecht, G., Bouwman, A. F., Harrison, J., and Knoop, J. M.: Global nitrogen and phosphate in urban wastewater for the period 1970 to 2050, *Global Biogeochemical Cycles*, 23, GBOA03, 10.1029/2009gb003458, 2009.

650 Vollenweider, R. A., Marchetti, R., and Viviani, R.: Marine coastal eutrophication, in, Elsevier, Amsterdam, 1310, 1992.

Wisser, D., Fekete, B. M., Vörösmarty, C. J., and Schumann, A. H.: Reconstructing 20th century global hydrography: a contribution to the Global Terrestrial Network-Hydrology (GTN-H), *Hydrology and Earth System Sciences*, 14, 1-24, 2010.

655 Wollheim, W., Vörösmarty, C. J., Bouwman, A. F., Green, P., Harrison, J., Meybeck, M., Peterson, B. J., Seitzinger, S. P., and Syvitski, J.: Global N removal by freshwater aquatic systems using a spatially distributed, within-basin approach, *Global Biogeochemical Cycles*, 22, GB2026, doi:10.1029/2007GB002963, 2008.

660

Figure captions

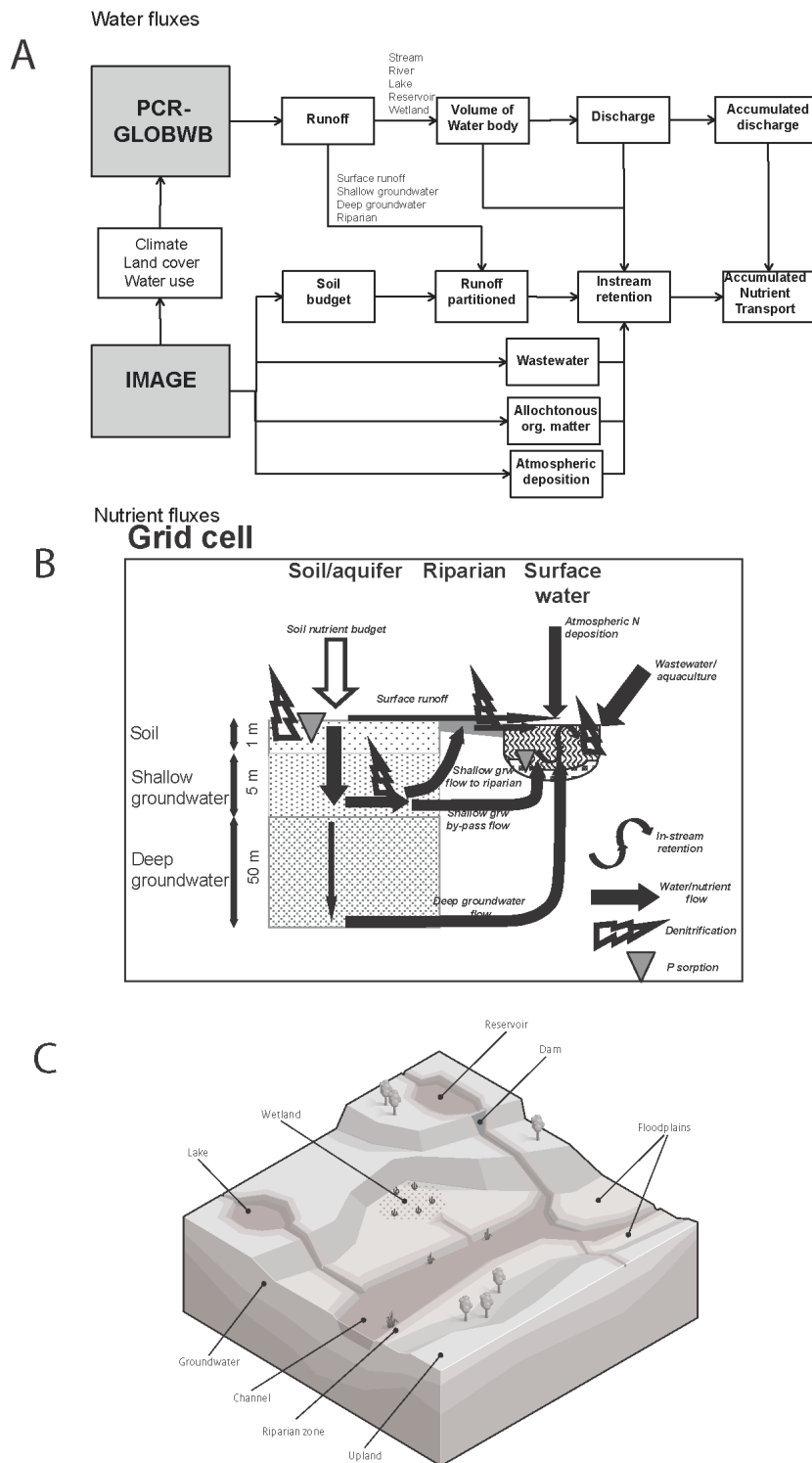


Figure 1. a) Scheme of the model framework with PCR-GLOBWB and IMAGE and
665 the data flows between the models; b) Scheme of the flows of water and nutrients, and

retention processes within a grid cell; c) Scheme of the routing of water (with N and P) in a landscape with streams, rivers, lakes, wetlands and reservoirs; each type of water body within a grid cell is defined by an inflow or discharge, depth and area. Floodplains may be temporarily flooded.

670

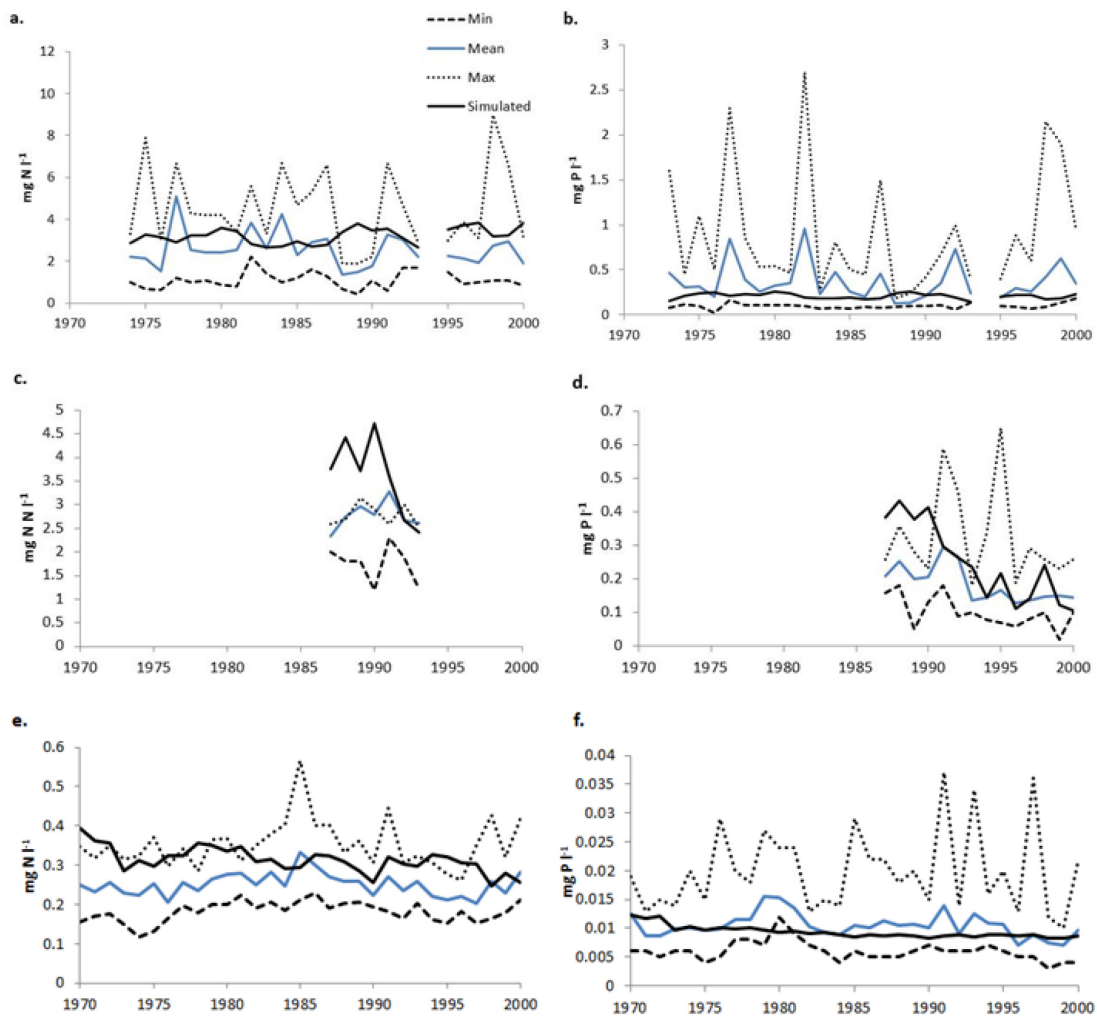


Figure 2. Comparison of modeled and observed concentrations of total N (left) and P (right) at stations in the rivers Missouri in U.S.A. (at Hermann, 38° 42' N; 91° 26' W) (a and b), Danube in Hungary (46.8 N; 18.9 E) (c and d), and Ångermanälven in Sweden (63.17N; 17.26E) (e and f). Figure 2a is modified from Beusen et al., 2015).

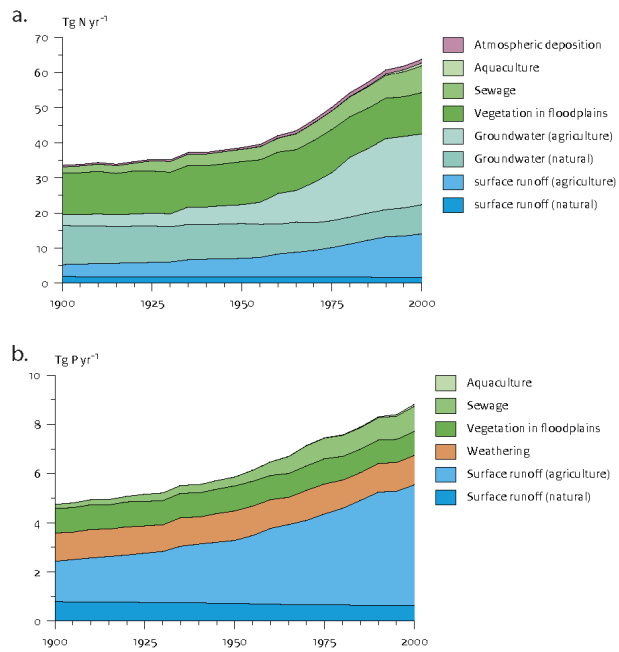


Figure 3. Global N (top) and P (bottom) delivery to surface water from different sources for the 20th century

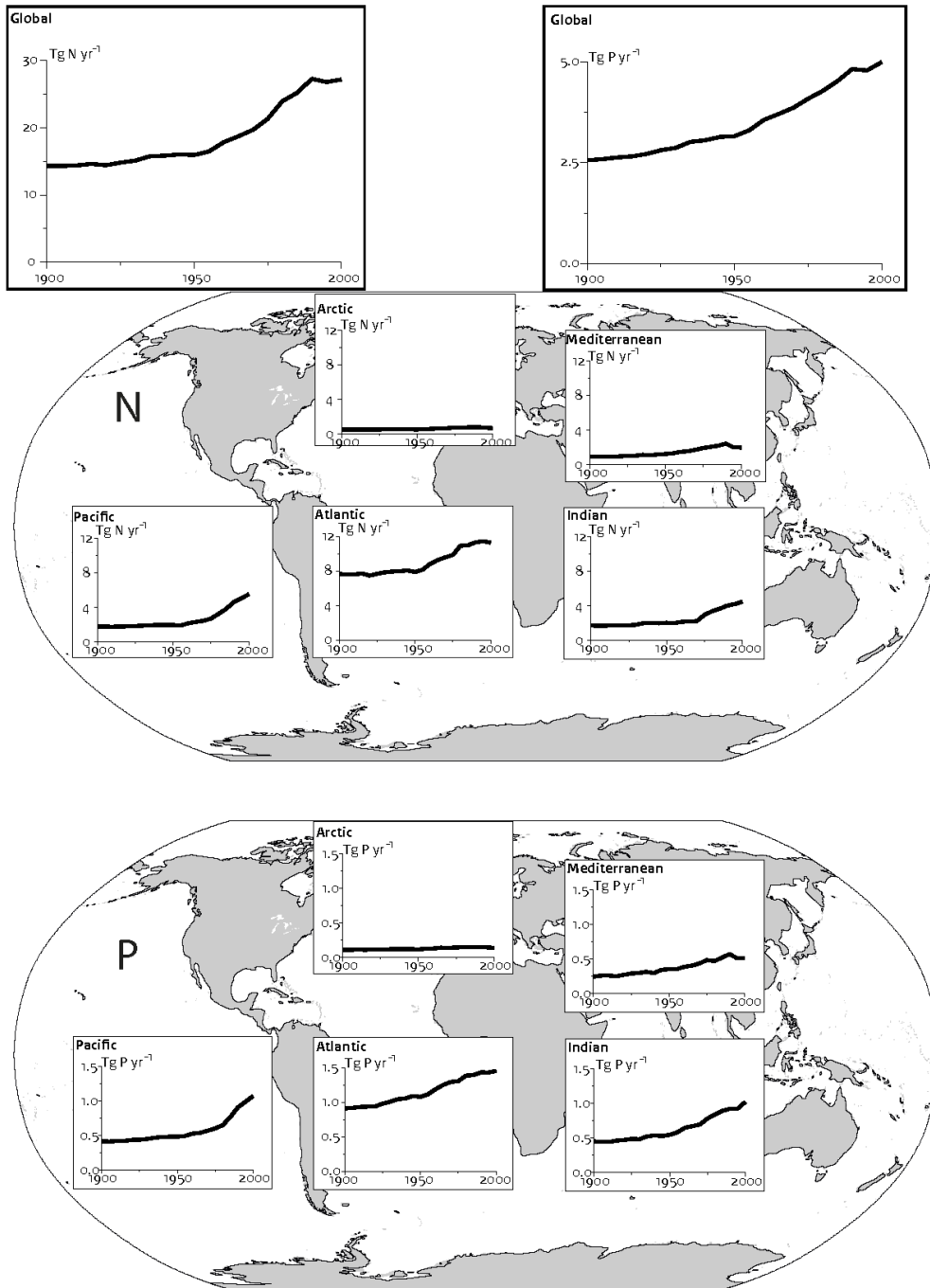


Figure 4. Retention of N and P in water delivered to surface water for rivers discharging in the Arctic Ocean, Atlantic Ocean, Indian Ocean, Pacific Ocean and Mediterranean Sea and Black Sea for the 20th century.

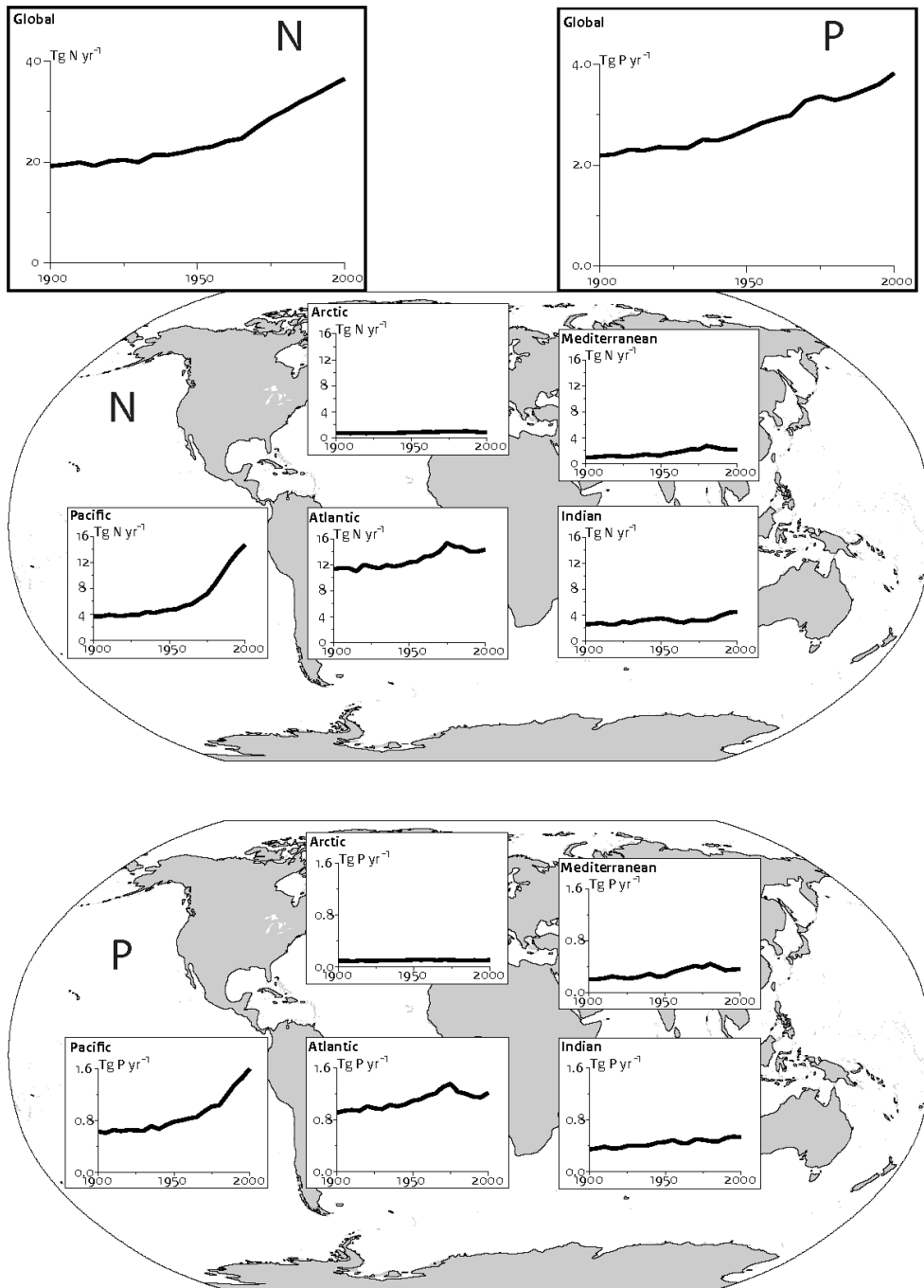


Figure 5. River export of N and P to coastal marine ecosystems for rivers discharging in the Arctic Ocean, Atlantic Ocean, Indian Ocean, Pacific Ocean and Mediterranean Sea and Black Sea for the 20th century.