

Model estimates of climate controls on pan-Arctic wetland methane emissions

X. Chen¹, T. J. Bohn², and D. P. Lettenmaier³

[1]{Department of Civil and Environmental Engineering, University of Washington, Seattle, WA, USA}

[2]{School of Earth and Space Exploration, Arizona State University, Tempe, AZ, USA}

[3]{Department of Geography, University of California, Los Angeles, CA, USA}

Correspondence to: T. J. Bohn (theodore.bohn@asu.edu)

Abstract

Climate factors including soil temperature and moisture, incident solar radiation, and atmospheric carbon dioxide concentration are important environmental controls on methane (CH_4) emissions from northern wetlands. We investigated the spatio-temporal distributions of the influence of these factors on northern high latitude wetland CH_4 emissions using an enhanced version of the Variable Infiltration Capacity (VIC) land surface model. We simulated CH_4 emissions from wetlands across the Pan-Arctic domain over the period 1948-2006, yielding annual average emissions of $36.1 \pm 6.7 \text{ TgCH}_4 \text{ y}^{-1}$ for the period 1997-2006. We characterized historical sensitivities of CH_4 emissions to air temperature, precipitation, incident long- and short-wave radiation, and atmospheric $[\text{CO}_2]$ as a function of average summer air temperature and precipitation. Emissions from relatively warm and dry wetlands in the southern (permafrost-free) portion of the domain were positively correlated with precipitation and negatively correlated with air temperature, while emissions from wetter and colder wetlands further north (permafrost) were positively correlated with air temperature. Over the entire period 1948-2006, our reconstructed CH_4 emissions increased by 20%, the majority of which can be attributed to an increasing trend in summer air temperature. We estimated future emissions in response to 21st Century warming as predicted by CMIP5 model projections to result in end-of-century CH_4 emissions 38-53% higher than our reconstructed 1997-2006 emissions, accompanied by the northward migration of warmer- and drier-than

- 1 optimal conditions for CH₄ emissions, implying a reduced role for temperature in driving
- 2 future increases in emissions.
- 3

1 Introduction

Methane (CH₄) is an important greenhouse gas, with a greenhouse warming potential about 25 times that of CO₂ (IPCC, 2013). Globally, wetlands are the largest natural CH₄ source (Fung et al., 1991; Hein et al., 1997; IPCC, 2013). The strong sensitivity of wetland CH₄ emissions to ambient soil conditions has led to concerns about possible feedbacks to climate change (Gedney et al., 2004; Eliseev et al., 2008). The northern high latitudes contain about one-half of the world's wetlands (Lehner and Döll, 2004) and are experiencing more rapid climate change than elsewhere globally (Serreze et al., 2000; Diffenbaugh and Giorgi, 2012). The potential liberation of vast quantities of carbon from thawing permafrost provides additional impetus to efforts to understand the sensitivity of northern wetland CH₄ emissions to climate change (Schaefer et al., 2011; Koven et al., 2011).

CH₄ emission rates in northern wetlands (which are predominantly peatlands) depend on a number of environmental and climate controls, including soil temperature, water table depth, labile carbon substrate, soil pH, oxidation state, nutrient concentrations, and vegetation composition (Saarnio et al., 1997; Christensen et al., 2003; Zhuang et al., 2004; Riley et al., 2011; Spahni et al., 2011; Glagolev et al., 2011; Lupascu et al., 2012; Levy et al., 2012; Olefeldt et al., 2013; Sabrekov et al., 2014). Many of these factors can interact and compete. For example, Bohn et al. (2007) showed via a process-based model that air temperature and precipitation exert competing influences on (a) water table depth, through winter snow accumulation, spring snow melt, and summer precipitation and evapotranspiration; and (b) metabolic rates, through soil temperature; leading to trade-offs in their influences over emissions. Extreme (limiting) values of one factor can raise the sensitivity of emissions to that factor (Olefeldt et al., 2013). As a result of these interactions, different factors exert dominant controls at different sites (Olefeldt et al., 2013) or time scales (Sabrekov et al., 2014), hindering efforts to constrain model behaviors in the face of sparse observations (Melton et al., 2013). Therefore, isolating those conditions under which different factors dominate or limit the response of wetland methane emissions to climate change would benefit future field campaigns and modeling studies.

Previous attempts to characterize the sensitivities of northern wetland CH₄ emissions to environmental factors have included both data-driven (Bloom et al., 2010; Olefeldt et al., 2013) and process-based modeling (Bohn et al., 2007; Ringeval et al., 2010) approaches.

1 Data-driven studies have the potential advantages of relative accuracy and simplicity, but can
2 have limited predictive power. For example, Olefeldt et al. (2013) found clear relationships
3 between observed emissions from over 300 high-latitude sites and soil temperature, water
4 table depth, and vegetation composition. However, while these relationships are a crucial step
5 forward in our understanding, they must be embedded within a process-based model to
6 estimate the aggregate response of northern wetland emissions to a given change in climate,
7 or characterize how these relationships may change with changing climate. Bloom et al.
8 (2010) fit a regression model to observed atmospheric CH₄ concentrations from the Scanning
9 Imaging Absorption Spectrometer for Atmospheric Chemistry (SCIAMACHY; Bovensmann
10 et al., 1999) to observed surface temperatures from the National Center for Environmental
11 Prediction/National Center for Atmospheric Research (NCEP/NCAR) weather analyses
12 (Kalnay et al., 1996) and gravity anomalies from the Gravity Recovery and Climate
13 Experiment satellite (GRACE; Tapley et al., 2004), and found that air temperature exerted the
14 dominant control over high-latitude emissions. Unfortunately, the short (four years) record
15 length and the use of GRACE data as a proxy for near-surface wetland soil moisture suggest
16 that these findings are highly uncertain and limited to the timespan of the satellite datasets
17 used.

18 Process-based studies potentially have greater predictive power, but their relative complexity
19 may involve highly uncertain parameterizations. For example, Ringeval et al. (2010) found
20 that variations in inundated area contributed 30% to the interannual variability in CH₄
21 emissions over the latitudes north of 50° N. However, despite the strong emissions observed
22 at non-inundated peatlands throughout the high latitudes (e.g., Saarnio et al., 1997; Panikov
23 and Dedysh, 2000; Friberg et al., 2003; Glagolev et al., 2011), they only considered emissions
24 from inundated wetlands, thus potentially inflating the contribution attributed to inundation.
25 Bohn et al. (2007) accounted for non-inundated emissions, but their study was restricted to a
26 small area in West Siberia. Numerous other process-based studies (using both forward and
27 inverse models) have investigated the response of northern CH₄ emissions to historical or
28 future climate variations (e.g., Chen and Prinn, 2006; Bousquet et al., 2011; Riley et al., 2011;
29 Spahni et al., 2011; Bohn et al., 2013; Zhu et al., 2014; Bohn et al., 2015), but none have
30 attempted to characterize the sensitivities of emissions to climate factors as a function of
31 geographic location, wetland type, or climate conditions.

CH₄ emissions are not the only biogeochemical process for which environmental controls have been investigated. Nemani et al. (2003) found that annual net primary productivity (NPP) is limited by temperature and radiation at high latitudes, but by moisture-related factors at lower latitudes. Teuling et al. (2009) and Seneviratne et al. (2010) investigated global climate controls on annual evapotranspiration (ET), and found that temperature is the dominant control over northern Eurasia, while precipitation is the dominant control at mid-low latitudes and in northern Canada. These data-driven studies all produced maps of the regions in which various climate factors dominate the flux in question. Such maps are useful in understanding how climate factors interact, which processes are most important, and how these fluxes might evolve under future climate change, particularly in cases where observations are sparse (as is true for CH₄ emissions).

In this study, we use a process-based model to characterize the dominant climate drivers of northern high-latitude wetland CH₄ emissions, and how they will change with changing climate. We address three questions:

- (1) What have been the aggregate long-term CH₄ emissions from the Pan-Arctic wetland area over the last 50 years, and how have they changed?
- (2) What have been the dominant factor(s) controlling changes in the space-time variability of CH₄ emissions over that time period?
- (3) How will these conditions be affected by a changing climate over the remainder of the 21st Century?

To investigate these questions, we use an enhanced version of the Variable Infiltration Capacity (VIC) large-scale hydrology model (Liang et al., 1994; Bohn et al. 2013) and the wetland CH₄ emissions model of Walter and Heimann (2000). In answering questions (2) and (3), we develop (a) maps of the sensitivities of simulated Pan-Arctic wetland CH₄ emissions to various environmental factors, (b) maps of correlations between these factors and CH₄ emissions, and (c) empirical estimates of how these sensitivities and correlations depend on climate. These sensitivity maps and climate dependencies provide a basis for projecting future emissions in the region, which we then compare with our VIC model projections to evaluate their ability to capture the effects of underlying processes.

2 Methods

2.1 Spatial Domain

Our study domain is the global land area north of 45°N (Figure 1a) with slight modifications. Because this region contains all the river basins that drain into the Arctic Ocean, we will refer to it as the “Pan-Arctic” hereafter, as in Slater et al. (2007). Our domain boundaries are as in the TransCom project (Gurney et al., 2000), except that we exclude Greenland. We also include southern Russia and the permafrost part of Tibet. We divided the domain into 3775 100-km equal-area EASE grid cells (Brodzik and Knowles, 2002).

Our domain includes three major wetland areas (Lehner and Döll, 2004; Tarnocai et al., 2009; Figure 1b): the West Siberian Lowland (WSL), which we define as the region from 55° to 75° N and 60° to 90° E; Scandinavia (55°-75° N and 15°-45° E); and the Hudson’s Bay Lowland (HBL), which we define as the region from 45° to 60° N and 75° to 100° W. There are also many smaller wetlands distributed over the domain. The vast majority of the domain’s wetlands are peatlands, which are reservoirs of organic carbon (Tarnocai et al., 2009), and have the potential to produce huge fluxes of carbon (CO₂ or CH₄) to the atmosphere. Forests cover about 23% of the total land area of our study domain, as evidenced by the belt of high values of leaf area index (LAI) between about 55° and 65°N (Myneni et al., 2002; Figure 1c).

Our domain includes essentially the entire northern hemisphere permafrost land area, aside from a few high altitude areas (Figure 1d; see also Brown et al., 2014). Within the permafrost areas, deep soil temperatures are generally below 0°C for successive years, which restricts biological methanogens. However, during summer, the active layer (seasonally thawed) provides a suitable environment for CH₄ production.

2.2 Model Framework

We used a modified version of the Variable Infiltration Capacity (VIC) version 4.1.2 (Liang et al., 1994; Bohn et al., 2013) that simulates carbon fluxes as well as the hydrologic processes represented in the standard version of the VIC model. The VIC model resolves the soil moisture and temperature profiles through a coupled water-energy balance scheme that accounts for cold-climate processes such as soil freeze-thaw and the insulating effects of organic soils. We provide here a brief description of the model features related to wetland process. The main enhancement in the version of VIC we used is a module for calculating the

1 carbon inputs into the ecosystem, which is the substrate source of biogeochemical processes
2 that produce CH_4 . Within each grid cell the model represents multiple land cover “tiles”. This
3 modified version of VIC also represents lakes and wetlands as described in Bohn et al.
4 (2013). Each grid cell in the study domain is assumed to be composed of a lake-wetland tile
5 and an upland portion (that may contain several different land cover tiles). The lake-wetland
6 tile contains peatlands of fixed area, within which a time-varying portion may be seasonally
7 inundated, and which may contain a permanent lake. Peatlands, which are modeled as a
8 mix of moss and shrubs, are allowed to emit CH_4 , subject to oxidation above the water table,
9 but lake CH_4 emissions are set to zero. The water table depth within peatlands follows a
10 distribution derived from assumed microtopography. Net primary productivity (NPP) within
11 peatlands experiences inhibition when the water table is above the soil surface. More details
12 of the lake-wetland continuum are included in Bohn et al (2013).

13 Permanent lakes were prescribed using the Global Lakes and Wetlands data set (GLWD) of
14 Lehner and Döll (2004). Wetland areas were taken in most cases from the union of wetland
15 classes from the GLWD and wetland pixels from the MODIS plant functional type dataset
16 MCD12Q1 (Friedl et al., 2010). However, in regions where the GLWD delineated wetland
17 classes as 25-50% and 50-100% (occurring in Alaska and Canada) we defined wetlands as
18 pixels with soil organic carbon content above 70% from the Northern Circum-Polar Soil
19 Carbon Database (Tarnocai et al., 2009). 2049 of the domain’s 3775 cells contain wetlands
20 (lake-wetland fractions shown in Figure 1b).

21 The enhanced VIC model is linked to the Walter and Heimann wetland CH_4 emissions model
22 (Walter and Heimann, 2000), as described in Bohn et al. (2013). The Walter and Heimann
23 CH_4 model takes the water table depth distribution, soil temperature profile and net primary
24 productivity (NPP) generated by VIC to calculate a distribution of CH_4 emissions rates. The
25 model assumes that labile carbon leaks into the soil through plant roots in proportion to NPP,
26 and is converted to CH_4 through anaerobic respiration of methanogens as a function of the
27 soil thermal and moisture conditions.

28 The combined VIC and CH_4 models were calibrated over West Siberia in Bohn et al. (2013),
29 and we adopted the median parameter values from the distributions from that study (Table 1)
30 for our primary simulations. In Bohn et al. (2013), two parameter sets were optimized for the
31 West Siberian Lowland: “south” (primarily within the forest belt, or taiga) and “north”
32 (primarily tundra). These parameter sets only corresponded to broad geographic regions,

rather than to specific types of wetlands such as bogs or fens. To extend these parameter sets across our entire domain, we assigned the “south” parameter set to grid cells with July LAI higher than 4, and the “north” parameter set to all other grid cells.

LAI data were taken from the MODIS MCD15A2 data set (Myneni et al., 2002) for the period 2002-2010. We used the mean seasonal cycle for this period repetitively for every year in our simulation period. Soil parameters were taken from Su et al. (2006).

The primary meteorological forcings used to drive the VIC include 3-hourly precipitation, air temperature, wind speed, downward shortwave and longwave radiation. These data were obtained from Sheffield et al. (2006) at 0.25x0.25 degree spatial resolution, which we regridded to 100 km EASE-grid. Atmospheric CO₂ concentration data were taken from Bohn et al. (2013).

2.3 Simulations

Our historical simulation period was 1948-2006. Model spin-up consisted of two stages: (1) initialization of carbon pool storages, and (2) a 50-year spinup to stabilize moisture and carbon pools. We initialized soil carbon pools via an iterative procedure in which we identified the initial storage that would result in zero net change in carbon storage over the period 1948-1957. Then, to account for the pools’ not yet having reached equilibrium with recent Holocene climate, we rescaled all three pool storages by the ratio of observed to simulated total carbon storage across West Siberia, using observations from Sheng et al. (2004). Then we ran the model for 50 years ($5 \times$ the decade 1948-1957) to stabilize its moisture and carbon storages. Starting from the model state at the end of this 50-year spin-up, we then performed simulations for 1948-2006.

To isolate the effects of various climate factors that drive the variability in CH₄ emissions, we performed five control experiments in which we removed trends (at each grid cell) in one or more variables (air temperature and longwave radiation; precipitation; air temperature, longwave radiation and precipitation; atmospheric CO₂ concentration; and solar radiation) during the period 1960-2006. Air temperature and longwave radiation were considered together, since downward longwave radiation can be expressed as a function of near-surface air temperature (e.g., Brutsaert, 1975). For air temperature and longwave radiation, we linearly regressed the annual values over time and removed cumulative changes due to the

trend since 1960 from each subsequent year. For annual total precipitation and annual average shortwave radiation, we linearly regressed the annual values, computed each year's ratio of detrended to original annual values, and multiplied all original daily values by that ratio for each day within the year. For detrended atmospheric CO₂, we used the 1960 concentration level for the entire period 1960-2006. Trends in the forcing variables were removed in cases when the trend was significant at the 0.05 level. At the 0.05 significance level, the entire domain experienced increasing trends in air temperature (0.0322 K y⁻¹), precipitation (0.5183 mm y⁻¹), [CO₂] (1.4009 ppm y⁻¹), and downward longwave radiation (0.0670 W m⁻² y⁻¹), and a decreasing trend in downward shortwave radiation (-0.0385 W m⁻² y⁻¹), which is consistent with Fang et al. (2009) (Table 2).

Using these historical and control forcings, we designed six experiments to investigate the impact of historical climate change on the wetland CH₄ emissions:

- (1) R01: Historical simulation, driven by historical forcings;
- (2) R02: Air temperature and longwave radiation (TLW) control run, using detrended air temperature and longwave radiation;
- (3) R03: CO₂ control run, using the 1960 CO₂ level;
- (4) R04: TLW and precipitation (TLWP) control run, using detrended air temperature, detrended longwave radiation, and detrended precipitation;
- (5) R05: Precipitation (P) control run, using detrended precipitation;
- (6) R06: Shortwave radiation (SW) control run, using detrended shortwave radiation.

2.4 Sensitivities to Climate Drivers as a Function of Climate

We defined the sensitivity coefficients (α) of CH₄ emissions to long-term changes in the driver variables as the partial derivatives:

$$\begin{aligned}
 \alpha_p &= \frac{dCH_4}{dP} \quad (\text{gCH}_4 \cdot \text{m}^{-2} \cdot \text{year}^{-1} \cdot \text{mm}^{-1}) \\
 \alpha_{TLW} &= \frac{dCH_4}{dT_{air}} \quad (\text{gCH}_4 \cdot \text{m}^{-2} \cdot \text{year}^{-1} \cdot \text{K}^{-1}) \\
 \alpha_{CO_2} &= \frac{dCH_4}{d[CO_2]} \quad (\text{gCH}_4 \cdot \text{m}^{-2} \cdot \text{year}^{-1} \cdot \text{ppm}^{-1}) \\
 \alpha_{SW} &= \frac{dCH_4}{dSW} \quad (\text{gCH}_4 \cdot \text{m}^{-2} \cdot \text{year}^{-1} \cdot (\text{W}/\text{m}^2)^{-1})
 \end{aligned} \tag{1}$$

Where the total change in annual methane emissions due to climate change $\Delta CH_4 = \alpha_P \times dP + \alpha_{TLW} \times dT_{air} + \alpha_{CO_2} \times dCO_2 + \alpha_{SW} \times dSW + interaction$. The CH_4 , T, $[CO_2]$ and SW values in this relationship were annual average values, while P was annual total precipitation.

We computed the sensitivity coefficients at each grid cell by first computing the timeseries of differences between the historical and control emissions, and then performing a linear regression between the differences in CH_4 and the differences between historical and detrended values of the driver variable. We then created maps of these sensitivities. To characterize the dependence of these sensitivities on climate, we divided the domain's grid cells into groups by their 46-year (1961-2006) average historical JJA T and JJA P, in increments of 2 °C and 20 mm, respectively (JJA T and P were chosen as independent variables for purposes of characterizing sensitivities rather than annual average T and P because the majority of annual CH_4 emissions occur during the growing season). Then, we computed the average sensitivities in each group, and plotted them as a function of JJA T and P. This gave us two-dimensional matrices of sensitivities. Grid cells with the same JJA T and P conditions could come from quite different locations in the study domain, thus the resulting averaged sensitivities were not overly influenced by the characteristics of a single region.

2.5 Identifying the Dominant Emission Controls

We calculated the correlation coefficients between the time series of CH_4 emissions and the various drivers at each grid cell, giving us a map of dominant controls (those with the highest correlations) across the domain. Similar to the sensitivities in section 2.4, we created 2-dimensional matrices of correlations as a function of JJA T and JJA P.

2.6 Future Projections

We generated two future projections of CH_4 emissions over the period 2007-2106: a process-based projection, in which we ran our modeling framework with future meteorological forcings; and a sensitivity-based projection, in which we applied the four sensitivity coefficients computed in section 2.4 to projected future forcings. To generate meteorological forcings for the future projections, we computed the monthly changes in meteorological forcings from the CCSM4 RCP4.5 projection (which falls near the middle of the set of all

CMIP5 RCP4.5 projections) over the period 2007-2106, relative to the period 1996-2005, and applied these changes to the Sheffield et al. (2006) meteorology.

Based on the sensitivity matrices, and given a reference climate condition and corresponding CH₄ emission rate, we can derive the projected emission rate via

$$CH_4(t+1) = \overline{CH_4}(t) + \alpha_P(\bar{T}(t), \bar{P}(t)) \times (P(t+1) - \bar{P}(t)) + \alpha_{TLW}(\bar{T}(t), \bar{P}(t)) \times (T(t+1) - \bar{T}(t)) + \alpha_{CO_2}(\bar{T}(t), \bar{P}(t)) \times (CO_2(t+1) - \overline{CO_2}(t)) \quad [2]$$

where t is the year; $\overline{CH_4}(t)$, $\bar{T}(t)$, $\bar{P}(t)$, and $\overline{CO_2}(t)$ are the average values of annual CH₄, JJA T, JJA P, and [CO₂] for the current grid cell over the last 10 years, and the coefficients are those defined in equation [1]. Here we assume that interactions among the individual climate forcings are negligible. We check this assumption in section 3.2.1. We also assume that, as a grid cell's average T and P change, its sensitivities to drivers will evolve to resemble the current sensitivities of cells at the new (T, P) coordinates. We discuss the validity of this assumption in Section 4.2.

2.7 Parameter Uncertainty

Our baseline simulations used the median parameter values of Bohn et al. (2013) as described in section 2.2. However, to assess the effects of parameter uncertainty on our results, we also generated an ensemble of 18 simulations using randomly sampled parameter values from the posterior distributions of Bohn et al. (2013) (Table 1). The parameters that we examined included r_0^* (the reference CH₄ production rate per unit annual average LAI), xv_{max} (the maximum CH₄ oxidation rate), r_{km} (the Michaelis Menten constant), r_{q10} and ox_{q10} (the Q₁₀ values for the temperature dependencies of the CH₄ production and oxidation rates, respectively), and $tveg$, a dimensionless integer value ranging from 0 to 15 that indicates the strength of plant-aided transport. The posterior distribution of $tveg$, which was held constant at a value of 12 in Bohn et al. (2013), was determined via Bayesian estimation from an ensemble of 3000 simulations that randomly sampled values of $tveg$ across the range 0 to 15 and sampled values of all other parameters from their posterior distributions, in comparison with the observations of Glagolev et al. (2011). We did not vary the parameter pox , which determines the fraction of CH₄ oxidized in the root zone, as variations in $tveg$ can compensate for variations in pox . Instead, we held pox constant at a value of 0.5, as in Walter and Heimann (2000) and Bohn et al. (2013). To account for uncertainty in our estimate of the border between the “south” and “north” regions, we performed two additional simulations, in

which the entire domain used either the median “south” parameter set or the median “north” parameter set (“all-south” and “all-north”, respectively). Adding these two simulations to our ensemble resulted in a total of 20 simulations. For each of these ensemble members, we constructed a distinct set of sensitivity matrices and created a sensitivity-based projection.

3 Results

3.1 Historical Simulation

Before examining simulated CH₄ emissions, we first evaluated model performance in simulating the environmental factors that are relevant to CH₄ emissions. The spatial distribution of simulated inundation extents was similar to that of the Surface Water Microwave Product Series (“SWAMPS”) remote sensing inundation product of Schroeder et al. (2010), with high concentrations in the WSL, Scandinavia, the HBL, and western Canada (Figure 2a,b). VIC’s inundated extent was biased low in western Canada, at about half the area given by SWAMPS.

To evaluate our simulated soil temperatures, we compared the distribution of continuous and discontinuous permafrost from the Circum-Arctic Map of Permafrost and Ground-Ice Condition (CAPGIC) map (Brown et al., 2014; Figure 2c) with the VIC-simulated active layer depth (ALD) in the permafrost area (Figure 2d). The spatial distribution of VIC’s ALD was similar to the distribution of permafrost. An ALD of 1m is an approximate threshold for “continuous permafrost” in the Brown et al. (2014) map.

We compared the simulated NPP distribution (Figure 2e) with the MODIS MOD17A3 NPP product (Running et al., 2004) (Figure 2f). Model results and MODIS patterns matched reasonably well (spatial correlation 0.87), with slight (about 6%) overestimation of NPP in the boreal forest band between 55° and 65° N latitude.

The spatial distribution of simulated average annual CH₄ emissions over the period 1960-2006 (Figure 3) was similar to the distribution of wetlands (Figure 1b), with notable concentrations in the WSL, Scandinavia, the HBL, and southern Canada. However, emissions were strongest in the boreal forest belt between 55° and 65° N latitude, as a consequence of warmer temperatures, greater inputs of labile carbon (due to the higher rates of NPP there; see Figures 2e,f), and the more productive “south” CH₄ parameter set that we used there. As an aside, the higher NPP values in the boreal forest belt do not necessarily imply that the peatlands there

are forested, although some peatlands there do contain substantial numbers of trees (the VIC model does not distinguish between forested and non-forested peatlands).

We evaluated our simulated CH₄ emissions over three subdomains: the WSL, the HBL, and the high latitudes of the western hemisphere. Over the WSL, we compared our simulations with the estimate of Glagolev et al. (2011), which is based on in situ observations of mire landscape CH₄ emissions during 2007-2010 (Figure 4). While our model tended to overestimate emissions in the middle of the domain, it captured the general north-south gradient in emissions. As to the total emission from the WSL area, Glagolev et al. estimated $3.91 \pm 1.29 \text{ TgCH}_4 \text{ y}^{-1}$, as compared with our estimate of $7.12 \text{ TgCH}_4 \text{ y}^{-1}$. Our result here is also considerably higher than the estimate of Bohn et al. (2013) of $3.65 \text{ TgCH}_4 \text{ y}^{-1}$, primarily because we (a) replaced that study's WSL-specific peatland maps (Sheng et al, 2004; Peregon et al., 2008), with the GLWD wetland map (Lehner and Döll, 2004), which attributes substantially higher wetland fractions to the region between 63° and 66° N latitude than the WSL-specific maps do; (b) we replaced the WSL-specific assignment of “north” and “south” CH₄ parameter sets by bioclimatic zone with the more general criterion of July LAI > 4 (section 2.2), which extended the region of more productive wetlands (“south” parameters) slightly further northward; and (c) used the meteorological forcings of Sheffield et al. (2006) instead of those of Adam et al. (2006). However, our estimate is within the range of estimates from inversions over the WSL, which range from $3.08 \text{ TgCH}_4 \text{ y}^{-1}$ (Kim et al., 2011) to $9.80 \text{ TgCH}_4 \text{ y}^{-1}$ (Schuldt et al., 2013; Winderlich, 2012).

CH₄ emissions over the HBL have been estimated by Pickett-Heaps et al. (2011) as $2.3 \pm 0.3 \text{ TgCH}_4 \text{ y}^{-1}$ during 2004-2008. Our estimate for the same region is $3.11 \pm 0.45 \text{ TgCH}_4 \text{ y}^{-1}$. Although larger than the Pickett-Heaps estimate, it is almost identical to the estimate of $3.1 \pm 0.5 \text{ TgCH}_4 \text{ y}^{-1}$ by Zhu et al. (2014).

Several studies have estimated total CH₄ emissions from all northern wetlands (Table 3), giving a range of 20-55 $\text{TgCH}_4 \text{ y}^{-1}$ over similar domains. Our model gives an estimate of $35.0 \text{ TgCH}_4 \text{ y}^{-1}$ during 1997-2006. This result is within the range of estimates from studies since 1990s, and is closer to some of the more recent results, e.g. $34 \pm 13 \text{ TgCH}_4 \text{ y}^{-1}$ from Chen and Prinn (2006) and $38.1\text{-}55.4 \text{ TgCH}_4 \text{ y}^{-1}$ from Zhu et al. (2014). The difference is well within the uncertainty range ascribed to most previous estimates.

3.2 Sensitivity to Climate Factors

3.2.1 Historical Trends

Over the entire Pan-Arctic domain, CH₄ emissions increased substantially over the period 1960-2006, with a trend of 0.158 Tg CH₄ y⁻¹ (Figure 5a and Table 4, 4th column). Emissions from the control runs are shown in Figure 5b-f. Defining the net impact of a driver as the difference between the historical trend in CH₄ emissions and the trend of the corresponding control run (Figure 5g and Table 2, 4th column), we can see that air temperature and longwave radiation (TLW) had the largest impact on emissions (0.104 Tg CH₄ y⁻¹, or 66% of the historical trend), followed by CO₂ (0.030 Tg CH₄ y⁻¹, or 19%) and precipitation (0.015 Tg CH₄ y⁻¹, or 10%). The combined impact of TLW and P (TLWP), at 0.115 Tg CH₄ y⁻¹, is slightly less than the sum of the impacts of TLW and P separately (0.119 Tg CH₄ y⁻¹), implying that these two drivers acted in opposition to each other to some extent, but also indicating that the interaction between T and P was a relatively small effect. Locally, the effects of precipitation were often larger than those of CO₂, but these effects largely canceled over the domain.

3.2.2 Sensitivity as a Function of Climate

The sensitivities of wetland CH₄ emissions to the climate factors we investigated varied in space or time, and were strongly influenced by climate conditions. In Figure 6a, which shows the distribution of spatial average annual CH₄ emissions as a function of 10-year average JJA T and P, maximum CH₄ emissions occur along a “ridge” of slope 13 mm K⁻¹ for JJA T values above 285 K and JJA P values above 120 mm. Consequently, increasing one factor (P or T) while holding the other factor constant may cause CH₄ emissions to increase or decrease, depending on the current climate state of the wetland. Under relatively cold or dry conditions, emissions tend to increase with increasing T and P. But at high P values, emissions decrease with increasing P, due to the inhibition of NPP under inundated conditions in the VIC model (Bohn et al., 2013). At high T values, emissions decrease with increasing T, due to increased oxidation of CH₄ as higher evaporation rates draw down the water table (Bohn et al., 2007).

Temporal correlations between historical annual CH₄ emissions and the three most important climate drivers (JJA T, JJA P, and JJA CO₂) were fairly consistent with this pattern (Figure 6b – d). Correlations between annual CH₄ emissions and JJA T (Figure 6b) were highest when JJA T is to the left of (colder than) the ridge of maximal emissions in Figure 6a, and lowest

(negative, in fact) to the right of (warmer than) the ridge. Similarly, correlations with JJA P were highest below (drier than) the Figure 6a ridge and lowest (negative) above (wetter than) the ridge, although this pattern broke down for JJA T below 285 K, where temperature limitation dominated the response and correlations with JJA P were only weakly positive or negative. Correlations with JJA CO₂ were moderately positive at all but the most extreme JJA T and P conditions, implying that CH₄ emissions generally benefit from CO₂ fertilization, via increased input of carbon substrate into the soil.

These differing responses of wetland CH₄ emissions to climate factors displayed strong geographic patterns, as a function of local climate (Figure 7). In Figure 7a, the ensemble median correlations between CH₄ and JJA T are represented on a blue (positive) to yellow (negative) color gradient. Similarly, correlations between CH₄ and JJA P are represented on a red (positive) to green (negative) color gradient. Therefore blue indicates a strong positive temperature control on CH₄ emissions (T+), and this can be thought of as too cold for maximum emissions; yellow indicates a strong negative temperature (T-) control (too warm); green indicates a strong negative precipitation ("P-") control (too wet), and red indicates a strong positive precipitation ("P+") control (too dry). In general, northern cells were T+ dominated (blue), due to the low summer air temperatures that they experience. These blue regions corresponded approximately to the distribution of permafrost (Figure 1d). Moving southward, emissions became P+ dominated (red). Southern West Siberia is relatively dry and warm, thus showing both P+ and T+ controls (orange). But in the northernmost regions of Alaska and Canada (where inundation fractions were high, see Figure 2b), we saw predominantly P- control (green). Comparison of this figure with Figure 2b also shows that P+ and T+ (orange) areas were associated with smaller inundated area fractions and warmer temperatures, due to deeper water tables and greater oxidation rates.

Parameter-based uncertainties in the correlations (Figure 7b), expressed as the range of correlations across the ensemble, were generally small (< 0.3) in both the T and P dimensions, except for P- limited (green) regions in northeastern Canada and central Tibet and the northern portion of the T+ limited region in north-central Canada. The general pattern of P+ limitation in the southern reaches of the domain and T+ limitation in much of the northern reaches of the domain appeared in all ensemble members.

Correlations between emissions and drivers tell us which driver is most influential at a given location. However, the sizes of the correlations are affected by both the relative sensitivities

of emissions to the drivers and the relative amplitudes of the drivers' signals. It is therefore useful to consider the sensitivities alone. Sensitivities of annual emissions to the three main drivers (JJA T, JJA P, and JJA CO₂) were markedly higher outside the continuous permafrost zone than within it (Figure 8). To first order, the explanation for this pattern is the general insensitivity of CH₄ emissions to all drivers at low temperatures, evident in Figure 6a. Nevertheless, there were important differences among the distributions; e.g., emissions in eastern Canada and eastern Siberia showed strong sensitivity to T, but weak sensitivity to P and CO₂. Spatial correlations between these sensitivities and various hydrologic and ecological terms, listed in Table 5, give some indication of which processes were most influential. The sensitivity of CH₄ emissions to JJA T (Figure 8a) was most highly correlated ($r = 0.30$) with April-May snow water equivalent (AM SWE), which is consistent with a lack of water limitation, due to larger spring snowpacks leading to wetter summer conditions. Similarly, the sensitivity of emissions to P (Figure 8b) was larger in absolute magnitude (positive or negative) where temperatures were warm, allowing for a higher (temperature-dependent) CH₄ production rate to be affected more dramatically by oxidation under drier conditions and reduced carbon input under wetter, more inundated conditions. The lack of strong correlations between the sensitivity to P and the various environmental factors in Table 5 may be the result of relatively high spatial heterogeneity in P and wetland moisture conditions (e.g., inundation), in comparison with that of T, leading to more “noise” in the relationships between them. Finally, the sensitivity of emissions to CO₂ (Figure 8c) was most strongly correlated ($r = 0.45$) with NPP (Figure 2f), which is consistent with the relationship between rates of carbon input into the soil and NPP in the model of Walter and Heimann (2000). Because relatively warm conditions and high NPP are associated with boreal forests, the geographic distributions of sensitivities to all factors also bore strong similarity to the distribution of boreal forest.

3.3 Process- and Sensitivity-Based Projections

To create a projection of future CH₄ emissions based on the climate sensitivities, we computed matrices of the sensitivity of aggregate emissions to each driver as a function of JJA T and P (Figure 9a,c,e), similarly to the earlier correlation matrices (Figure 6). To ensure that sensitivities exist for all possible future combinations of JJA T and P in the projection, we filled gaps in the matrices via a 3 row x 3 column window with a Gaussian kernel with $\sigma=1$. Similar to the correlation matrices discussed in section 3.2.2, the sensitivities to JJA T, JJA P,

1 and [CO₂] all exhibited maximum values along a diagonal “ridge” for $T > 285$ K and $P > 120$
 2 mm (which correspond to the climate conditions in which boreal forest is found). For the
 3 sensitivities to JJA T and [CO₂], the ridges had similar slopes of approximately 30 mm K⁻¹.
 4 Sensitivities to JJA T were negative for $P < 50$ mm and $285 \text{ K} < T < 291 \text{ K}$, due to increasing
 5 CH₄ oxidation above the water table with increasing temperature. In contrast, the ridge of
 6 maximum sensitivities to JJA P had a lower slope of about 12.5 mm K⁻¹, with a region of
 7 negative sensitivities for $P > 190$ mm and $287 \text{ K} < T < 293 \text{ K}$, due to reduced productivity
 8 under inundated conditions. Again, sensitivities to all drivers were nearly zero for JJA $T <$
 9 285 K, due to the non-linear temperature dependence of CH₄ production as well as the
 10 tendency for wetlands in that temperature range to be less productive (and therefore use the
 11 less productive “north” parameter set). Uncertainty in the methane model parameters (across
 12 the ensemble of random parameter combinations) led to a wide range of sensitivity values
 13 (Figures 9b, d, and f). However, the contours of the matrices of the individual ensemble
 14 members had similar shapes, so that regions of higher or lower sensitivities occurred in
 15 similar locations in climate space. The ensemble of sensitivity-based projections, created by
 16 applying these sensitivity matrices to meteorological forcings based on the CCSM4 RCP4.5
 17 projection over the period 2006-2106, yielded a similar trajectory of CH₄ emissions to the
 18 projection from our process-based model (Figure 10). Both the process-based (black) and
 19 median sensitivity-based (blue) projections agreed that emissions will initially remain
 20 relatively constant from 2007 to 2026 (in response to relatively little trend in air temperatures
 21 over the period; Figure 10b) and then resume their increase. For the period 2056-2065, the
 22 process- and median sensitivity-based projections reached 46.1 and 43.4 Tg CH₄ y⁻¹,
 23 respectively (132% and 124%, respectively, of the 1997-2006 level). By the end of the
 24 century (2096-2105), they reached 50.1 and 48.3 Tg CH₄ y⁻¹ (142% and 138%, respectively,
 25 of their 1997-2006 levels). Uncertainty in the methane model parameters led to a range of 39
 26 to 57 Tg CH₄ y⁻¹ in sensitivity-based end-of-century emissions at the 95% confidence level.
 27 However, the other members of the uncertainty ensemble followed trajectories that were
 28 similar to the median sensitivity-based projection over the course of the century, resulting in
 29 increases of 38 to 53% over their 1997-2006 levels.

30 While the two projections agreed on long-term behavior, their year-to-year variability
 31 disagreed at times, with the median sensitivity-based projection sometimes anti-correlated
 32 with the process-based projection. This is likely due to our construction of average
 33 sensitivities over all grid cells having similar climate conditions, which ignored the influence

1 of local land cover, topography, and soils. Thus, during some years in some grid cells, our
2 sensitivity matrices may have indicated a sensitivity of opposite sign to that of the process-
3 based model, due to the grid cell's "ridge" of maximum emissions occurring in a different
4 location in T-P space than in the domain-average matrix. Nevertheless, the general agreement
5 in the long-term, domain-wide behavior implies that the sensitivity-based method captured the
6 aggregate response of wetland CH₄ emissions to climate reasonably well.

7 Geographically, the regions of largest increases in emissions during the next century were in
8 the boreal forest belt (Figure 11a,c). This behavior was fairly consistent across the ensemble
9 of methane parameter sets, with the exception of uncertainties > 30% of the median in
10 southern Canada and northwestern Siberia (Figure 11b). These increases in emissions began
11 at the southern edge of the domain and spread northward over time, corresponding to a
12 northward shift in the types of controls exerted by climate factors, as shown in Figure 12.
13 Between 1997-2006 and 2096-2105, areas of P+ control (red and pink) migrated northward by
14 10-20° of latitude, into territory that was previously under T+ control (blue) (Figure 12, left).
15 In other words, wetlands between 55 and 65° N latitude that were previously colder than
16 optimal experienced warming without a sufficient corresponding increase in precipitation,
17 leading to their becoming drier than optimal, and increasing their positive response to
18 increases in precipitation. Other regions of historically T+ control with large lake areas (e.g.,
19 Finland and Northern Canada) were replaced by P- control (green) as they warmed. These
20 patterns were robust across the parameter uncertainty ensemble, with large uncertainties
21 primarily confined to northeastern Canada (Figure 12 right).

22 To investigate the role of inundated area in the interannual variation of methane emissions,
23 we calculated the changes in inundated fraction (Figure 13a-c) and mean water table levels
24 (Figure 13d-f) of the process-based projection between the periods 1960-2006 and 2081-
25 2100. The large areas of drying (reduced inundated area and falling water tables) in southern
26 Canada and Alaska in Figures 13c and 13f are consistent with the increase in the extent of P+
27 limited (red) wetlands in those same places over the 21st century shown in Figure 12.

4 Discussion

4.1 Historical Climate Controls on CH₄ Emissions

Our analysis indicates that summer air temperature increases explain almost two-thirds of the long-term trend in CH₄ emissions over the last-half century over the pan-Arctic domain. Precipitation had a smaller net effect (it explains only 10% of the long-term trend), but this is due in part to spatial heterogeneity in the historical trends of P and their effects on CH₄, leading to partial cancellation over pan-Arctic domain. Nevertheless, the dominant role of air temperature in the pan-Arctic is not entirely surprising, given that the region is generally cold, leading to temperature limitation on metabolic rates. Our map of the historical controls on emissions (Figure 7) corroborates this notion, since most of the region has historically been T+ limited. This finding is largely consistent with Bloom et al. (2010), who also found that air temperature was the dominant factor controlling CH₄ emissions at high latitudes. However, our finding of strong P+ limitation in the band between 50 and 60 °N (Figure 7) is at odds with Bloom et al. (2010). This discrepancy may be due to a lack of variability in GRACE observations there (Bohn et al., 2015) or the inability of the global linear regression used by Bloom et al. to capture the location- and climate- dependent sensitivities accounted for by process-based models and the sensitivity-based approach that we have used here.

Within the pan-Arctic domain, we found strong geographic patterns in climate controls on CH₄ emissions. Similar (observation rather than model-based) analyses have been performed on NPP (Nemani et al., 2003) and ET (Teuling et al., 2009). Our study shares some similarity in conclusions. For example, these studies show that CH₄, NPP and ET are all T+ controlled around Hudson Bay and in Scandinavia, and P+ controlled in the wetlands of southwestern Canada. This is not surprising, because NPP and ET are both tightly linked with CH₄ production: NPP determines how much carbon can be converted to CH₄, while ET is positively correlated with soil moisture content, as is the CH₄ emission rate. In the WSL, the wetlands in the south are P+ and T- controlled, suggesting that this area is much drier than the north, with more CH₄ emitted as the water tables are drawn down during summer (Bohn et al., 2007). NPP in this southern area is in transition from T limited to P limited (Nemani et al., 2003), which is consistent with CH₄. In a recent process-based study, Liu et al. (2015) also found that ET in southern Siberia is P+ limited.

1 Despite their similarities, there are some differences in the spatial distributions of controls
2 between our and previous studies. In Nemani et al. (2003), NPP over northern Europe and
3 West Siberia is almost entirely limited by temperature and radiation, while in our results, CH₄
4 is P+ limited over a considerable area. This is due in part to the nearly negligible role
5 shortwave radiation plays in CH₄ emissions (Figure 5); in part to the drier optimal soil
6 moisture conditions for upland vegetation (included in the Nemani et al. NPP analysis),
7 relative to wetland plants (which we focus on here); and in part to the rapid drop in CH₄
8 emissions as the water table is drawn down beyond a few cm. Similarly, the area of P+
9 limitation of ET in Western Canada in Teuling et al. (2009) is smaller than the area of P+
10 limitation of CH₄ emissions in our study. This can also be explained by the presence of
11 forested uplands in this area, where the moisture deficit in upper soil layers from low
12 precipitation is partly compensated by water extracted from deeper soils. Thus, only those
13 places with considerable shortage of water will show up as P+ in the Teuling et al. ET map.

14 The validity of our results depends on our model's temporal behavior, which is subject to both
15 model uncertainty and parameter uncertainty. Verification opportunities include in situ
16 observations, and atmospheric model inversions. Both are problematic, due to the paucity of
17 long in situ observational records in the first case and the errors to which inversions are
18 subject in the second (see Bohn et al., 2015). Nevertheless, in Bohn et al. (2015), the
19 interannual variability of our modeling framework (called "UW-VIC" therein) was assessed
20 over the West Siberian Lowland over the period 1993-2004, relative to observations, several
21 atmospheric inversions (including those of Bousquet et al. (2011)), and many other process-
22 based models. While there was little agreement across these datasets in terms of interannual
23 variability, the process-based models (including UW-VIC) that employed soil physics
24 formulations appropriate to high-latitudes and realistic relationships between CH₄ emissions
25 and water table depth tended to be more similar to the inversions than those that did not. Our
26 investigation of parameter uncertainty (Figures 9 and 10) revealed a substantial range in
27 sensitivities and end-of-century CH₄ emissions, but made little difference to the shape of the
28 trajectory over the next century or the spatial distribution of climate controls. Thus, we
29 believe our findings here are robust with respect to parameter uncertainty. However,
30 investigation of the impacts of model uncertainty on climate controls on CH₄ emissions using
31 other model formulations would be useful.

4.2 Sensitivity-Based Future Projections

Our sensitivity estimates provide a simplified description of wetland behavior; in effect, a linearization of our process-based model. Nevertheless, the similarity between our process-based and sensitivity-based projections suggests that our domain-averaged sensitivities capture most of the dependence of CH₄ emissions on climate conditions, as represented within our modeling framework. Our projected emissions are comparable to those of other process-based studies. Our estimate of a 24-32% increase in pan-Arctic CH₄ emissions by mid-century is comparable to the 25% increase estimated by Anisimov (2011). Over northern Eurasia, our estimate of end-of-century emissions is 21.5 TgCH₄ y⁻¹, similar to the estimate of 25.1±3.7 TgCH₄ y⁻¹ by Zhu et al. (2011). The widespread warming and drying of wetlands and consequent reduced sensitivity of emissions to warming in our projections are consistent with similar findings in other studies (Koven et al., 2011; Riley et al., 2011; Ringeval et al., 2011; Lawrence et al., 2015).

Our characterization of the sensitivities of emissions to climate requires the assumption that, as a grid cell's climate changes, its future sensitivities will come to resemble those of cells with similar climate today; in essence attributing climate sensitivities completely to current climate state. Several studies have, however, found associations between vegetation and CH₄ emissions (Glagolev et al., 2011; Lupascu et al., 2012; Levy et al., 2012; Olefeldt et al., 2013). In particular, Olefeldt et al. (2013) found that emission rates from sedge-dominated wetlands are not only higher but also more sensitive to changes in both soil temperature and water table depth than are emission rates from non-sedge-dominated wetlands. On the other hand, dynamic vegetation models suggest that vegetation communities will migrate northward with future climate change (e.g., Kaplan and New, 2006; Alo and Wang, 2008), potentially bringing with them any characteristics (e.g., aerenchyma) that enhance CH₄ emissions. To the extent that vegetation communities can migrate in step with climate change, our sensitivity matrices would still be applicable. Nonetheless, this suggests an interesting avenue for future research.

4.3 Future Changes in the Dominant Controls

In our future projections, we found that much of the region will shift from T+ limitation (colder than optimal) to T- and P+ limitation (warmer and drier than optimal). This large-scale shift towards the warm and dry side of the “ridge” of maximum emissions implies that

air temperature will play a smaller role in end-of-century emissions than at present, for two reasons: first, the positive response to an increase in temperature in the northern portion of the domain will be partially or completely cancelled by the negative response from the southern portion; and second, the response to precipitation will increase due to the widespread drier-than-optimal conditions. This suggests that, beyond the year 2100, emissions may level off or even decrease under further climate change, unless precipitation can increase sufficiently to compensate for the increases in air temperature. The larger future role of P in controlling pan-arctic CH₄ emissions may lead to greater uncertainty in future projections beyond 2100, due to the poorer performance and greater lack of agreement of global climate models in projecting future precipitation than temperature (Hawkins and Sutton, 2011; IPCC, 2014).

There are additional reasons to think that T will play a reduced role in the future. There is some indication that the metabolic impacts of higher temperatures have been overestimated by most models, as most studies neglect acclimatization. Koven et al., (2011), for instance, found that soil microbial communities essentially adapt to warmer soil temperatures and CH₄ emissions rates return to their previous levels. Koven et al. (2011) showed that acclimatization could eliminate over 50% of the increase in emissions over the Pan-Arctic by the end of the century that would otherwise occur. Under such conditions, the primary effects of increased T would then be on drying out the wetlands through increased ET. In addition, because our model did not simulate dynamic vegetation phenology, we did not account for increased transpiration arising from CO₂ fertilization, which also would have a drying effect on the wetlands (the wetland-climate-CH₄ feedback as discussed by Ringeval et al., 2011, Koven et al., 2011, and Stocker et al., 2013). Including these effects in the model on which our sensitivities were based would likely reduce the sensitivity of future emissions to further increases in T and perhaps even change the sign of the sensitivity to negative in some water-limited locations. Thus, our estimates of the expansion of the water-limited zone and the reduction of the role of T may be considered a lower bound.

5 Conclusions

We performed an historical simulation of wetland CH₄ emissions for the Pan-Arctic domain, 1948-2006. In addition, we performed five experiments that investigated the sensitivities of CH₄ emissions to changing climate, and two future projections over the period 2007-2106, one process-based and the other based on CH₄ emission sensitivities to T, P and CO₂. Our main conclusions are:

- (1) We estimate the annual CH₄ emissions from Pan-Arctic wetlands averaged over 1997-2006 at 35.0±6.7 TgCH₄ y⁻¹. This is within the range of previous estimates, but somewhat toward the higher end..
- (2) Based on our model, climate change over the last ~half century has led to a substantial (20%) increase in total emitted CH₄, with increases in air temperature (and associated downward longwave radiation) being the dominant driver. Increases in temperature and [CO₂] were responsible for over 84% of the inferred increase in emissions. Most of the remainder is attributable to changes in shortwave radiation (decreasing) and precipitation (increasing).
- (3) The dominance of air temperature is corroborated by the predominance of temperature-limited wetlands throughout most of the domain, with water-limited wetlands primarily occupying only the southernmost portion of the domain (south of 60° N latitude).
- (4) Both process-based and sensitivity-based projections agreed that wetland CH₄ emissions from Pan-Arctic wetlands will increase to 138-153% of present-day levels by the end of this century. Because this study did not account for potential acclimatization or the wetland-climate-ch₄ feedback resulting from CO₂ fertilization, this projected increase may be overestimated.
- (5) As future climate across the pan-Arctic becomes warmer, northern wetlands are likely to shift from the current temperature-dominated state toward a more precipitation-dominated state due to a lack of sufficient increase in precipitation to compensate for higher evapotranspiration, and resultant soil drying. The resulting sensitivity of CH₄ emissions to further warming may then level off or even become negative.

Author Contributions

All co-authors jointly conceived and designed this study. X. Chen performed all model simulations and data analysis. X. Chen prepared the manuscript with contributions from all co-authors.

Acknowledgements

This work was funded by NASA Grant No. 12-006827 A AM05 via subcontract from the University of Massachusetts at Amherst. T. J. Bohn was supported by grant 1216037 from

1 the U.S. National Science Foundation (NSF) Science, Engineering and Education for
2 Sustainability (SEES) Post-Doctoral Fellowship program.
3

1 **References**

- 2 Alo, C. A., and Wang, G.: Potential future changes of the terrestrial ecosystem based on
3 climate projections by eight general circulation models, *J. Geophys. Res.-Biogeo.*, 113(G1),
4 G01004, doi: 10.1029/2007JG000528, 2008.
- 5 Anisimov, O.: Potential feedback of thawing permafrost to the global climate system through
6 methane emission, *Environmental Research Letters*, 2, 045016, doi: 10.1088/1748-
7 9326/2/4/045016, 2007.
- 8 Bartlett, K. B. and Harriss, R. C.: Review and assessment of methane emissions from
9 wetlands, *Chemosphere*, 26, 261-320, doi: 10.1016/0045-6535(93)90427-7, 1993.
- 10 Bohn, T., Lettenmaier, D., Sathulur, K., Bowling, L., Podest, E., McDonald, K. and Friborg,
11 T.: Methane emissions from western Siberian wetlands: heterogeneity and sensitivity to
12 climate change, *Environmental Research Letters*, 2, 045015, doi: 10.1088/1748-
13 9326/2/4/045015, 2007.
- 14 Bohn, T. J., Podest, E., Schroeder, R., Pinto, N., McDonald, K. C., Glagolev, M., Filippov, I.,
15 Maksyutov, S., Heimann, M., Chen, X., and Lettenmaier, D. P.: Modeling the large-scale
16 effects of surface moisture heterogeneity on wetland carbon fluxes in the West Siberian
17 Lowland, *Biogeosciences*, 10, 6559-6576, doi:10.5194/bg-10-6559-2013, 2013.
- 18 Bohn, T. J., Melton, J. R., Ito, A., Kleinen, T., Spahni, R., Stocker, B. D., Zhang, B., Zhu, X.,
19 Schroeder, R., Glagolev, M. V., Maksyutov, S., Brovkin, V., Chen, G., Denisov, S. N.,
20 Eliseev, A. V., Gallego-Sala, A., McDonald, K. C., Rawlins, M. A., Riley, W. J.,
21 Subin, Z. M., Tian, H., Zhuang, Q., and Kaplan, J. O.: WETCHIMP-WSL: intercomparison of
22 wetland methane emissions models over West Siberia, *Biogeosciences*, 12, 3321-3349,
23 doi:10.5194/bg-12-3321-2015, 2015.
- 24 Bovensmann, H., Burrows, J. P., Buchwitz, M., Frerick, J., Noël, S., Rozanov, V. V., Chance,
25 K. V., and Goede, A. P. H.: SCIAMACHY: Mission objectives and measurement modes, *J.*
26 *Atmos. Sci.*, 56(2), 127-150, 1999.
- 27 Bousquet, P., Ringeval, B., Pison, I., Dlugokencky, E. J., Brunke, E.-G., Carouge, C.,
28 Chevallier, F., Fortems-Cheiney, A., Frankenberg, C., Hauglustaine, D. A., Krummel, P. B.,
29 Langenfelds, R. L., Ramonet, M., Schmidt, M., Steele, L. P., Szopa, S., Yver, C., Viovy, N.,

1 and Ciais, P.: Source attribution of the changes in atmospheric methane for 2006-2008,
2 Atmos. Chem. Phys., 11, 3689-3700, doi: 10.5194/acp-11-3689-2011, 2011.

3 Brodzik, M. J. and Knowles, K. W.: "EASE-Grid: a versatile set of equal-area projections
4 and grids", Discrete Global Grids, M. Goodchild (Ed.), Santa Barbara, California USA:
5 National Center for Geographic Information & Analysis.
6 http://www.ncgia.ucsb.edu/globalgrids-book/ease_grid/, 2002.

7 Brown J., Ferrians, O., Heginbottom, J. A., and Melnikov, E., Circum-Arctic Map of
8 Permafrost and Ground Ice Conditions, Boulder, CO, USA: National Snow and Ice Data
9 Center, [digital media], 2014.

10 Brutsaert, W., On a derivable formula for long-wave radiation from clear skies, Water Resour.
11 Res., 11(5), 742-744, doi: 10.1029/WRR011i005p00742, 1975.

12 Cao, M., Marshall, S. and Gregson, K.: Global carbon exchange and methane emissions from
13 natural wetlands: Application of a process-based model, Journal of Geophysical Research:
14 Atmospheres (1984–2012), 101, 14399-14414, doi: 10.1029/96JD00219, 1996.

15 Chen, Y. and Prinn, R. G.: Estimation of atmospheric methane emissions between 1996 and
16 2001 using a three-dimensional global chemical transport model, Journal of Geophysical
17 Research: Atmospheres (1984–2012), 111, D10307, doi: 10.1029/2005JD006058, 2006.

18 Christensen, T., Prentice, I., Kaplan, J., Haxeltine, A. and Sitch, S.: Methane flux from
19 northern wetlands and tundra, Tellus B, 48, 652-661, 1996.

20 Christensen, T. R., Ekberg, A., Ström, L., Mastepanov, M., Panikov, N., Öquist, M.,
21 Svensson, B. H., Nykänen, H., Martikainen, P. J. and Oskarsson, H.: Factors controlling large
22 scale variations in methane emissions from wetlands, Geophys. Res. Lett., 30(7), 1414, doi:
23 10.1029/2002GL016848, 2003.

24 Diffenbaugh, N. S. and Giorgi, F.: Climate change hotspots in the CMIP5 global climate
25 model ensemble, Clim. Change, 114, 813-822, doi: 10.1007/s10584-012-0570-x, 2012.

26 Eliseev, A. V., Mokhov, I. I., Arzhanov, M. M., Demchenko, P. F., and Denisov, S. N.:
27 Interaction of the methane cycle and processes in wetland ecosystems in a climate model of
28 intermediate complexity, Izv. Atmos. Ocean. Phy., 44(2), 139-152, doi:
29 10.1134/S0001433808020011, 2008.

1 Fang, W. and Yihui, D.: Validation of Simulation on Surface Shortwave Radiation over East
2 Asia by Global Climate Models, *Journal of Applied Meteorological Science*, 19, 749-759,
3 doi: 10.3969/j.issn.1001-7313.2008.06.015, 2009.

4 Friborg, T., Soegaard, H., Christensen, T. R., and Panikov, N. S.: Siberian wetlands: Where a
5 sink is a source, *Geophys. Res. Lett.*, 30(21), 2129, doi: 10.1029/2003GL017797, 2003.

6 Friedl, M. A., Sulla-Menashe, D., Tan, B., Schneider, A., Ramankutty, N., Sibley, A., and
7 Huang, X.: MODIS Collection 5 global land cover: algorithm refinements and
8 characterization of new datasets, *Remote Sens. Environ.*, 114, 168-182, doi:
9 10.1016/j.rse.2009.08.016, 2010.

10 Fung, I., John, J., Lerner, J., Matthews, E., Prather, M., Steele, L. and Fraser, P.: Three-
11 dimensional model synthesis of the global methane cycle, *Journal of Geophysical Research:*
12 *Atmospheres* (1984–2012), 96, 13033-13065, doi: 10.1029/91JD01247, 1991.

13 Gedney, N., Cox, P. and Huntingford, C.: Climate feedback from wetland methane emissions,
14 *Geophys. Res. Lett.*, 31, L20503, doi: 10.1029/2004GL020919, 2004.

15 Glagolev, M., Kleptsova, I., Filippov, I., Maksyutov, S. and Machida, T.: Regional methane
16 emission from West Siberia mire landscapes, *Environmental Research Letters*, 6, 045214, doi:
17 10.1088/1748-9326/6/4/045214, 2011.

18 Gurney, K., Law, R., Rayner, P. and Denning, A.: Transcom 3 experimental protocol,
19 Department of Atmospheric Science, Colorado State University USA, 2000.

20 Hawkins, E., and Sutton, R.: The potential to narrow uncertainty in projections of regional
21 precipitation change, *Clim. Dyn.*, 37(1-2), 407-418, 2011.

22 Hein, R., Crutzen, P. J. and Heimann, M.: An inverse modeling approach to investigate the
23 global atmospheric methane cycle, *Global Biogeochem. Cycles*, 11, 43-76, doi:
24 10.1029/96GB03043, 1997.

25 Intergovernmental Panel on Climate Change (IPCC): Climate Change 1995: The Science of
26 Climate Change. Contribution of Working Group I to the Second Assessment Report of the
27 Intergovernmental Panel on Climate Change, [Houghton, J. T., Meira Filho, L. G., Callander,
28 B. A., Harris, N., Kattenberg, A., and Maskell, K. (eds.)]. Cambridge University Press,
29 Cambridge, United Kingdom and New York, NY, USA, 572 pp, 1996.

1 Intergovernmental Panel on Climate Change (IPCC): Climate Change 2013: The Physical
2 Science Basis. Contribution of Working Group I to the Fifth Assessment Report of the
3 Intergovernmental Panel on Climate Change, [Stocker, T.F., D. Qin, G.-K. Plattner, M.
4 Tignor, S.K. Allen, J. Boschung, A. Nauels, Y. Xia, V. Bex and Midgley, P. M. (eds.)].
5 Cambridge University Press, Cambridge, United Kingdom and New York, NY, USA, 1535
6 pp, doi:10.1017/CBO9781107415324, 2013.

7 Kalnay, E., Kanamitsu, M., Kistler, R., Collins, W., Deaven, D., Gandin, L., Iredell, M., Saha,
8 S., White, G., Woollen, J., Zhu, Y., Leetmaa, A., Reynolds, R., Chelliah, M., Ebisuzaki, W.,
9 Higgins, W., Janowiak, J., Mo, K. C., Ropelewski, C., Wang, J., Jenne, R., and Joseph, D.:
10 The NCEP/NCAR 40-year reanalysis project, B. Am. Meteorol. Soc., 77, 437-471, doi:
11 10.1175/1520-0477/(1996)077<0477:TNYRP>2.0.CO;2, 1996.

12 Kaplan, J. O., and New, M.: Arctic climate change with a 2 degrees C global warming:
13 Timing, climate patterns and vegetation change, Climatic Change, 79(3-4), 213-241, doi:
14 10.1007/s10584-006-9113-7, 2006.

15 Kim, H., Maksyutov, S., Glagolev, M., Machida, T., Patra, P., Sudo, K. and Inoue, G.:
16 Evaluation of methane emissions from West Siberian wetlands based on inverse modeling,
17 Environmental Research Letters, 6, 035201, doi: 10.1088/1748-9326/6/3/035201, 2011.

18 Lawrence, D. M., Koven, C. D., Swensen, S. C., Riley, W. J., and Slater, A. G.: Permafrost
19 thaw and resulting soil moisture changes regulate projected high-latitude CO₂ and CH₄
20 emissions, Environ. Res. Lett., 10, 094011, doi: 10.1088/1748-9326/10/9/094011.

21 Lehner, B. and Döll, P.: Development and validation of a global database of lakes, reservoirs
22 and wetlands, Journal of Hydrology, 296, 1-22, doi: 10.1073/pnas.1103910108, 2004.

23 Levy, P. E., Burden, A., Cooper, M. D., Dinsmore, K. J., Drewer, J., Evans, C., Fowler, D.,
24 Gaiawyn, J., Gray, A. and Jones, S. K.: Methane emissions from soils: synthesis and analysis
25 of a large UK data set, Global Change Biol., 18, 1657-1669, doi: 10.1111/j.1365-
26 2486.2011.02616.x, 2012.

27 Liang, X., Lettenmaier, D. P., Wood, E. F., and Burges, S. J.: A simple hydrologically based
28 model of land surface water and energy fluxes for GSMs, J. Geophys. Res.-Atmos., 99(D7),
29 14415-14428, 1994.

30 Liu, Y., Zhuang, Q., Miralles, D., Pan, Z., Kicklighter, D., Zhu, Q., He, Y., Chen, J.,
31 Tchebakova, N., Sirin, A., Niyogi, D., and Melillo, J.: Evapotranspiration in Northern

1 Eurasia: Impact of forcing uncertainties on terrestrial ecosystem model estimates, *J. Geophys.*
2 *Res.-Atmos.*, 120, 10.1002/2014JD022531, 2015.

3 Lupascu, M., Wadham, J. L., Hornibrook, E. R. C., and Pancost, R. D.: Temperature
4 sensitivity of methane production in the permafrost active layer at Stodalen, Sweden: a
5 comparison with non-permafrost northern wetlands, *Arct. Antarct. Alp. Res.*, 44(4), 469-482,
6 doi: 10.1657/1938-4246-44.4.469, 2012.

7 Melton, J. R., Wania, R., Hodson, E., Poulter, B., Ringeval, B., Spahni, R., Bohn, T., Avis, C.
8 A., Beerling, D. J., Chen, G., Eliseev, A. V., Denisov, S. N., Hopcroft, P. O., Lettenmaier, D.
9 P., Riley, W. J., Singarayer, J. S., Subin, Z. M., Tian, H., Zurcher, S., Brovkin, V., van
10 Bodegom, P. M., Kleinen, T., Yu, Z. C., and Kaplan, J. O.: Present state of global wetland
11 extent and wetland methane modelling: Conclusions from a model intercomparison project
12 (WETCHIMP), *Biogeosciences*, 10(2), 753-788, doi:10.5194/bg-10-753-2013, 2013.

13 Myneni, R. B., Hoffman, S., Knyazikhin, Y., Privette, J. L., Glassy, J., Tian, Y., Wang, Y.,
14 Song, X., Zhang, Y., Smith, G. R., Lotsch, A., Friedl, M., Morisette, J. T., Votava, P.,
15 Nemani, R. R., and Running, S. W.: Global products of vegetation leaf area and fraction
16 absorbed PAR from year one of MODIS data, *Remote Sens. Environ.*, 83, 214-231, doi:
17 10.1016/S0034-4257(02)00074-3, 2002.

18 Nemani, R. R., Keeling, C. D., Hashimoto, H., Jolly, W. M., Piper, S. C., Tucker, C. J.,
19 Myneni, R. B. and Running, S. W.: Climate-driven increases in global terrestrial net primary
20 production from 1982 to 1999, *Science*, 300, 1560-1563, doi: 10.1126/science.1082750, 2003.

21 Olefeldt, D., Turetsky, M. R., Crill, P. M., and McGuire, A. D.: Environmental and physical
22 controls on northern terrestrial methane emissions across permafrost zones, *Global Change*
23 *Biol.*, 19, 589-603, doi: 10.1111/gcb.12071, 2013.

24 Panikov, N. S., and Dedysh, S. N.: Cold season CH₄ and CO₂ emission from boreal peat bogs
25 (West Siberia): Winter fluxes and thaw activation dynamics, *Global Biogeochem. Cy.*, 14(4),
26 1071-1080, 2000.

27 Peregon, A., Maksyutov, S., Kosykh, N. P., Mironycheva-Tokareva, N. P.: Map-based
28 inventory of wetland biomass and net primary production in western Siberia, *J. Geophys.*
29 *Res.-Biogeo.*, 113(G1), G01007, doi:10.1029/2007JG000441, 2008.

30 Pickett-Heaps, C. A., Jacob, D. J., Wecht, K. J., Kort, E. A., Wofsy, S. C., Diskin, G. S.,
31 Worthy, D. E. J., Kaplan, J. O., Bey, I., and Drevet, J.: Magnitude and seasonality of wetland

1 methane emissions from the Hudson Bay Lowlands (Canada), *Atmos. Chem. Phys.*, 11, 3773-
2 3779, doi: 10.5194/acp-11-3773-2011, 2011.

3 Riley, W., Subin, Z., Lawrence, D., Swenson, S., Torn, M., Meng, L., Mahowald, N. and
4 Hess, P.: Barriers to predicting changes in global terrestrial methane fluxes: analyses using
5 CLM4Me, a methane biogeochemistry model integrated in CESM, *Biogeosciences*, 8, 1925-
6 1953, doi: 10.5194/bg-8-1925-2011, 2011.

7 Ringeval, B., Friedlingstein, P., Koven, C., Ciais, P., Noblet-Ducoudré, N. d., Decharme, B.
8 and Cadule, P.: Climate-CH₄ feedback from wetlands and its interaction with the climate-CO₂
9 feedback, *Biogeosciences*, 8, 2137-2157, doi: 10.5194/bg-8-2137-2011, 2011.

10 Ringeval, B., de Noblet-Ducoudré, N., Ciais, P., Bousquet, P., Prigent, C., Papa, F. and
11 Rossow, W. B.: An attempt to quantify the impact of changes in wetland extent on methane
12 emissions on the seasonal and interannual time scales, *Global Biogeochem. Cycles*, 24,
13 GB2003, doi: 10.1029/2008GB003354, 2010.

14 Running, S., Nemani, R. R., Heinsch, F. A., Zhao, M., Reeves, M., and Hashimoto, H.: A
15 continuous satellite-derived measure of global terrestrial primary production, *BioScience*,
16 54(6), 547-560, doi: 10.1641/0006-3568(2004)054[0547:ACSMOG]2.0.CO;2, 2004.

17 Saarnio, S., Alm, J., Silvola, J., Lohila, A., Nykänen, H. and Martikainen, P. J.: Seasonal
18 variation in CH₄ emissions and production and oxidation potentials at microsites on an
19 oligotrophic pine fen, *Oecologia*, 110, 414-422, doi: 10.1007/s004420050176, 1997.

20 Sabrekov, A., Runkle, B., Glagolev, M., Kleptsova, I. and Maksyutov, S.: Seasonal variability
21 as a source of uncertainty in the West Siberian regional CH₄ flux upscaling, *Environmental*
22 *Research Letters*, 9, 045008, doi: 10.1088/1748-9326/9/4/045008, 2014.

23 Schaefer, K., Zhang, T., Bruhwiler, L., and Barrett, A. P.: Amount and timing of permafrost
24 carbon release in response to climate warming, *Tellus B*, 63, 165-180, doi: 10.1111/j.1600-
25 0889.2011.00527.x, 2011.

26 Schroeder, R., Rawlins, M. A., McDonald, K. C., Podest, E., Zimmermann, R., and Kueppers,
27 M.: Satellite microwave remote sensing of North Eurasian inundation dynamics: development
28 of coarse-resolution products and comparison with high-resolution synthetic aperture radar
29 data, *Environ. Res. Lett.*, 5(1), 015003, doi: 10.1088/1748-9326/5/1/015003, [available at
30 <http://wetlands.jpl.nasa.gov>], 2010.

1 Schuldt, R., Brovkin, V., Kleinen, T. and Winderlich, J.: Modelling Holocene carbon
2 accumulation and methane emissions of boreal wetlands—an Earth system model approach,
3 *Biogeosciences*, 10, 1659-1674, doi: 10.5194/bg-10-1659-2013, 2013.

4 Seneviratne, S. I., Corti, T., Davin, E. L., Hirschi, M., Jaeger, E. B., Lehner, I., Orlowsky, B.
5 and Teuling, A. J.: Investigating soil moisture–climate interactions in a changing climate: A
6 review, *Earth-Sci. Rev.*, 99, 125-161, doi: 10.1016/j.earscirev.2010.02.004, 2010.

7 Serreze, M. C., Walsh, J. E., Chapin, F. S., Osterkamp, T., Dyurgerov, M., Romanovsky, V.,
8 Oechel, W. C., Morison, J., Zhang, T., and Barry, R. G.: Observational evidence of recent
9 change in the northern high-latitude environment, *Climatic Change*, 46(1-2), 159-207, doi:
10 10.1023/A:1005504031923, 2000.

11 Sheffield, J., Goteti, G. and Wood, E. F.: Development of a 50-year high-resolution global
12 dataset of meteorological forcings for land surface modeling, *J. Clim.*, 19, 3088-3111, doi:
13 10.1175/JCLI3790.1, 2006.

14 Sheng, Y., Smith, L. C., MacDonald, G. M., Kremenetski, K. V., Frey, K. E., Velichko, A.
15 A., Lee, M., Beilman, D. W., and Dubinin, P.: A high-resolution GIS-based inventory of the
16 west Siberian peat carbon pool, *Global Biogeochem. Cy.*, 18(3), GB3004, doi:
17 10.1029/2003GB002190, 2004.

18 Slater, A. G., Bohn, T. J., McCreight, J. L., Serreze, M. C., and Lettenmaier, D. P.: A
19 multimodel simulation of pan-Arctic hydrology, *Journal of Geophysical Research*, 112,
20 G04S45, doi:10.1029/2006JG000303, 2007.

21 Spahni, R., Wania, R., Neef, L., Weele, M. v., Pison, I., Bousquet, P., Frankenberg, C.,
22 Foster, P., Joos, F. and Prentice, I.: Constraining global methane emissions and uptake by
23 ecosystems, *Biogeosciences*, 8, 1643-1665, doi: 10.5194/bg-8-1643-2011, 2011.

24 Stocker, B. D., Roth, R., Joos, F., Spahni, R., Steinacher, M., Zaehle, S., Bouwman, L. and
25 Prentice, I. C.: Multiple greenhouse-gas feedbacks from the land biosphere under future
26 climate change scenarios, *Nature Climate Change*, 3, 666-672, 10.1038/nclimate1864,
27 2013.Su, F., Adam, J. C., Trenberth, K. E. and Lettenmaier, D. P.: Evaluation of surface water
28 fluxes of the pan-Arctic land region with a land surface model and ERA-40 reanalysis,
29 *Journal of Geophysical Research: Atmospheres* (1984–2012), 111, D05110, doi:
30 10.1029/2005JD006387, 2006.

1 Tapley, B. D., Bettadpur, S., Ries, J. C., Thompson, P. F., and Watkins, M. M.: GRACE
2 measurements of mass variability in the Earth system, *Science*, 305(5683), 503-505, doi:
3 10.1126/science.1099192, 2004.

4 Tarnocai, C., Canadell, J., Schuur, E., Kuhry, P., Mazhitova, G. and Zimov, S.: Soil organic
5 carbon pools in the northern circumpolar permafrost region, *Global Biogeochem. Cycles*, 23,
6 GB2023, doi: 10.1029/2008GB003327, 2009.

7 Teuling, A., Hirschi, M., Ohmura, A., Wild, M., Reichstein, M., Ciais, P., Buchmann, N.,
8 Ammann, C., Montagnani, L. and Richardson, A.: A regional perspective on trends in
9 continental evaporation, *Geophys. Res. Lett.*, 36, L02404, doi: 10.1029/2008GL036584,
10 2009.

11 Walter, B. P. and Heimann, M.: A process-based, climate-sensitive model to derive methane
12 emissions from natural wetlands: Application to five wetland sites, sensitivity to model
13 parameters, and climate, *Global Biogeochem. Cycles*, 14, 745-765, doi:
14 10.1029/1999GB001204, 2000.

15 Walter, B. P., Heimann, M., and Matthews, E.: Modeling modern methane emissions from
16 natural wetlands: 1. Model description and results, *J. Geophys. Res.-Atmos.*, 106(D24),
17 34189-34206, doi: 10.1029/2001JD900165, 2001.

18 Winderlich, J.: Setup of a CO₂ and CH₄ measurement system in Central Siberia and modeling
19 of its results. Technical Reports - Max-Planck-Institut für Biogeochemie 26, pp. 120, 2012.

20 Zhu, X., Zhuang, Q., Lu, X. and Song, L.: Spatial scale-dependent land-atmospheric methane
21 exchanges in the northern high latitudes from 1993 to 2004, doi: 10.5194/bg-11-1693-2014,
22 2014.

23 Zhu, X., Zhuang, Q., Chen, M., Sirin, A., Melillo, J., Kicklighter, D., Sokolov, A. and Song,
24 L.: Rising methane emissions in response to climate change in Northern Eurasia during the
25 21st century, *Environmental Research Letters*, 6, 045211, doi: 10.1088/1748-
26 9326/6/4/045211, 2011.

27 Zhuang, Q., Melillo, J. M., Kicklighter, D. W., Prinn, R. G., McGuire, A. D., Steudler, P. A.,
28 Felzer, B. S. and Hu, S.: Methane fluxes between terrestrial ecosystems and the atmosphere at
29 northern high latitudes during the past century: A retrospective analysis with a process-based
30 biogeochemistry model, *Global Biogeochem. Cycles*, 18, GB3010, doi:
31 10.1029/2004GB002239, 2004.

1 Tables

2 Table 1. Parameter distributions used in the Walter and Heimann (2000) CH₄ model.

Region	Parameter	Units	Percentile		
			1 st	50 th	99 th
North	r_0^*	[$\mu\text{mol L}^{-1} \text{ h}^{-1}$ ($\text{gC m}^{-2} \text{ d}^{-1}$) ⁻¹]	0.015	0.020	0.026
	xvmax	[$\mu\text{mol L}^{-1} \text{ h}^{-1}$]	0.06	0.14	0.32
	rkm	[$\mu\text{mol L}^{-1}$]	4.2	11.0	13.9
	rq10	[-]	2.5	3.4	5.2
	oxq10	[-]	1.3	4.9	5.9
	tveg	[-]	6	11	15
South	r_0^*	[$\mu\text{mol L}^{-1} \text{ h}^{-1}$ ($\text{gC m}^{-2} \text{ d}^{-1}$) ⁻¹]	0.016	0.019	0.022
	xvmax	[$\mu\text{mol L}^{-1} \text{ h}^{-1}$]	0.16	0.24	0.27
	rkm	[$\mu\text{mol L}^{-1}$]	13.0	16.1	17.1
	rq10	[-]	9.7	10.7	11.7
	oxq10	[-]	1.6	2.1	3.4
	tveg	[-]	7	12	15

3 Note: r_0^* is the reference CH₄ production rate per unit annual average LAI (r_0^* is related to
4 the original r_0 parameter from Walter and Heimann (2000) by $r_0^* = r_0/\text{LAI}_{\text{avg}}$ as described in
5 Bohn et al. (2013)); xvmax is the maximum CH₄ oxidation rate; rkm is the Michaelis Menten
6 constant for CH₄ oxidation; rq₁₀ is the Q₁₀ value for the CH₄ production rate; oxq₁₀ is the Q₁₀
7 value for the CH₄ oxidation rate; and tveg is a dimensionless integer value ranging from 0 to
8 15 that indicates the strength of plant-aided transport.

9

10 Table 2. Trends in spatial average climate factors, 1960-2006.

Factor	Trend
--------	-------

Mean annual air temperature (T)	0.0322 K y ⁻¹
Annual precipitation (P)	0.5183 mm y ⁻¹
Mean annual [CO ₂]	1.4009 ppm y ⁻¹
Mean annual shortwave radiation (SW)	-0.0385 W m ⁻² y ⁻¹
Mean annual longwave radiation (LW)	0.0670 W m ⁻² y ⁻¹

1

2 Table 3. Estimates of total CH₄ emissions over the study domain.

Method	Estimate (TgCH ₄ y ⁻¹)	Area	Reference	Period
VIC + Walter CH ₄	35.0±6.7	Pan-Arctic wetlands	(This study)	1997-2006
VIC+TEM	38.1-55.4	Pan-Arctic area	Zhu et al. (2014)	1993-2004
MATCH (inversion)	34±13	N. hemisphere high latitude wetlands	Chen and Prinn, (2006)	1996-2001
Walter CH ₄ model	56	Wetlands north of 45°N	Walter et al. (2001)	1982-1993
Inversion	48	Wetlands north of 45°N	Hein et al. (1997)	1983-1989
process-based model	20±13	Northern wetlands and tundra	Christensen et al. (1996)	1990s
WMEM	23.3	Wetlands north of 40°N	Cao et al. (1996)	-
(literature review)	35	N. hemisphere wetlands	IPCC (1996)	1980s – 1990s
(literature review)	38	Wetlands north of 45°N	Bartlett and Harris (1993)	1980s

Table 4. Trends in CH₄ emissions from historical and control simulations, 1960-2006. All values are in units of (Tg CH₄ y⁻¹).

Simulation	Trend	95% confidence bound	Driver (historical trend - control trend)
R01 (historical)	0.158	(0.107, 0.207)	-
R02 (TLW control)	0.054	(0.006, 0.103)	0.104
R03 (CO2 control)	0.128	(0.079, 0.176)	0.030
R04 (TLWP control)	0.043	(-0.007, 0.093)	0.115
R05 (P control)	0.143	(0.093, 0.194)	0.015
R06 (SW control)	0.154	(0.104, 0.204)	0.004

Table 5. Spatial correlation coefficients between sensitivities and environmental factors.

Sensitivity of Annual CH ₄ (g CH ₄ m ⁻² y ⁻¹) to:	Environmental Factor							
	JJA T ^a (K)	JJA P ^b	JJA F _{inund} ^c	AM SWE ^d (mm)	JJA LAI ^e	ALD ^f (m)	Annual NPP ^g (g C m ⁻² y ⁻¹)	JJA T _{soil} ^h (K)
JJA T(K)	0.1928	0.1827	0.0438	0.2990	0.1735	0.1813	0.2658	0.1682
JJA P (mm)*	0.2231	0.0309	-0.1068	-0.0530	0.1570	0.0797	0.1013	0.0462
[CO2] (ppm)	0.3856	0.3209	0.0887	0.2951	0.3364	0.3096	0.4541	0.3064

^aJJA T = June-July-August average air temperature; ^bJJA P = June-July-August total precipitation; ^cJJA F_{inund} = June-July-August inundated area fraction; ^dAM SWE = April-May average snow water equivalent; ^eJJA LAI = June-July-August average leaf area index; ^fALD = maximum annual active layer depth; ^gAnnual NPP = annual net primary productivity; ^hJJA T_{soil} = June-July-August average temperature in the top 10 cm of the soil column.

*Extreme values of sensitivity (> 0.005 g CH₄ m⁻² y⁻¹ per mm change in JJA P) were ignored; these occurred at 164 cells, out of 2049 cells containing wetlands.

1 Figures

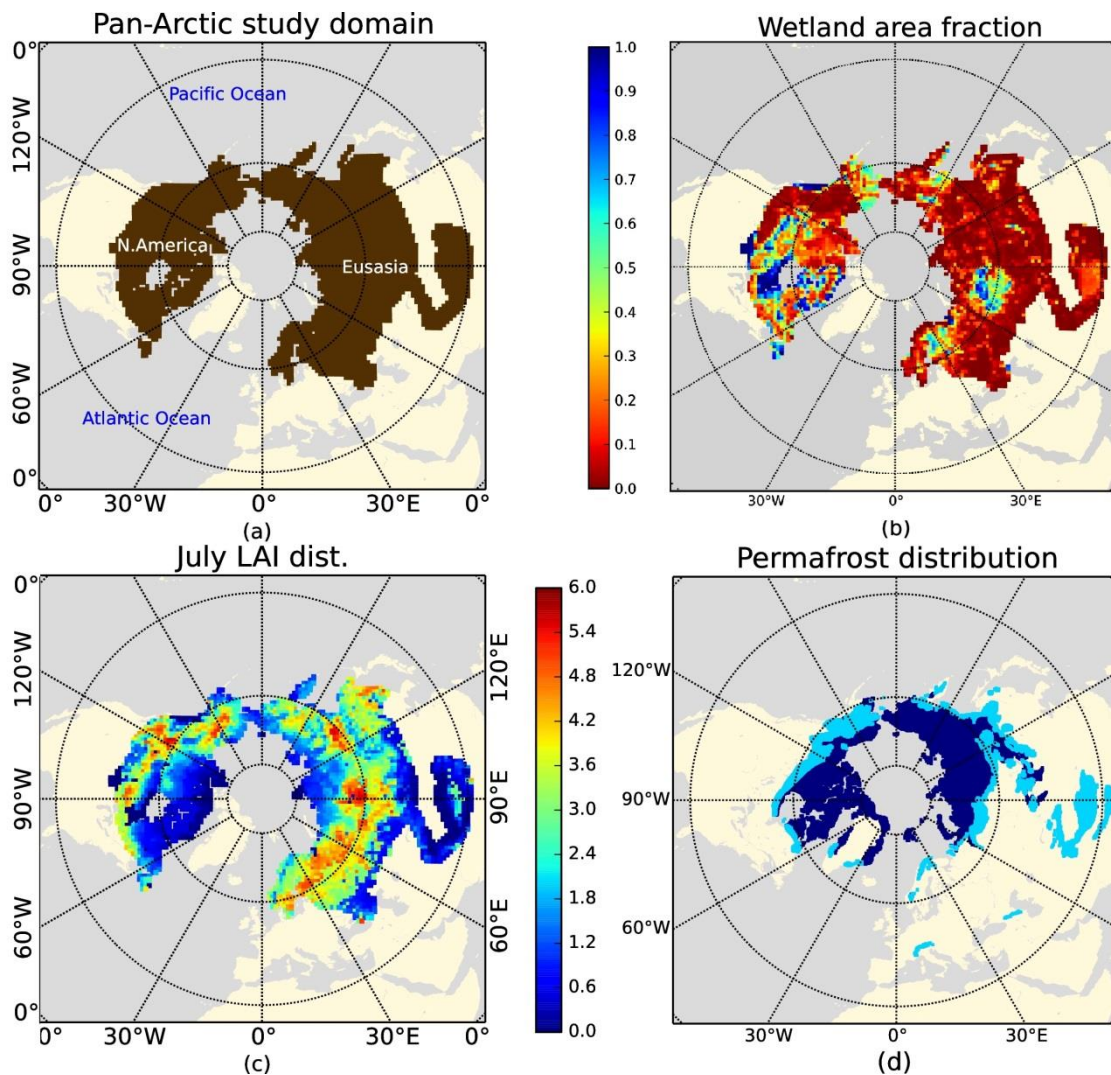
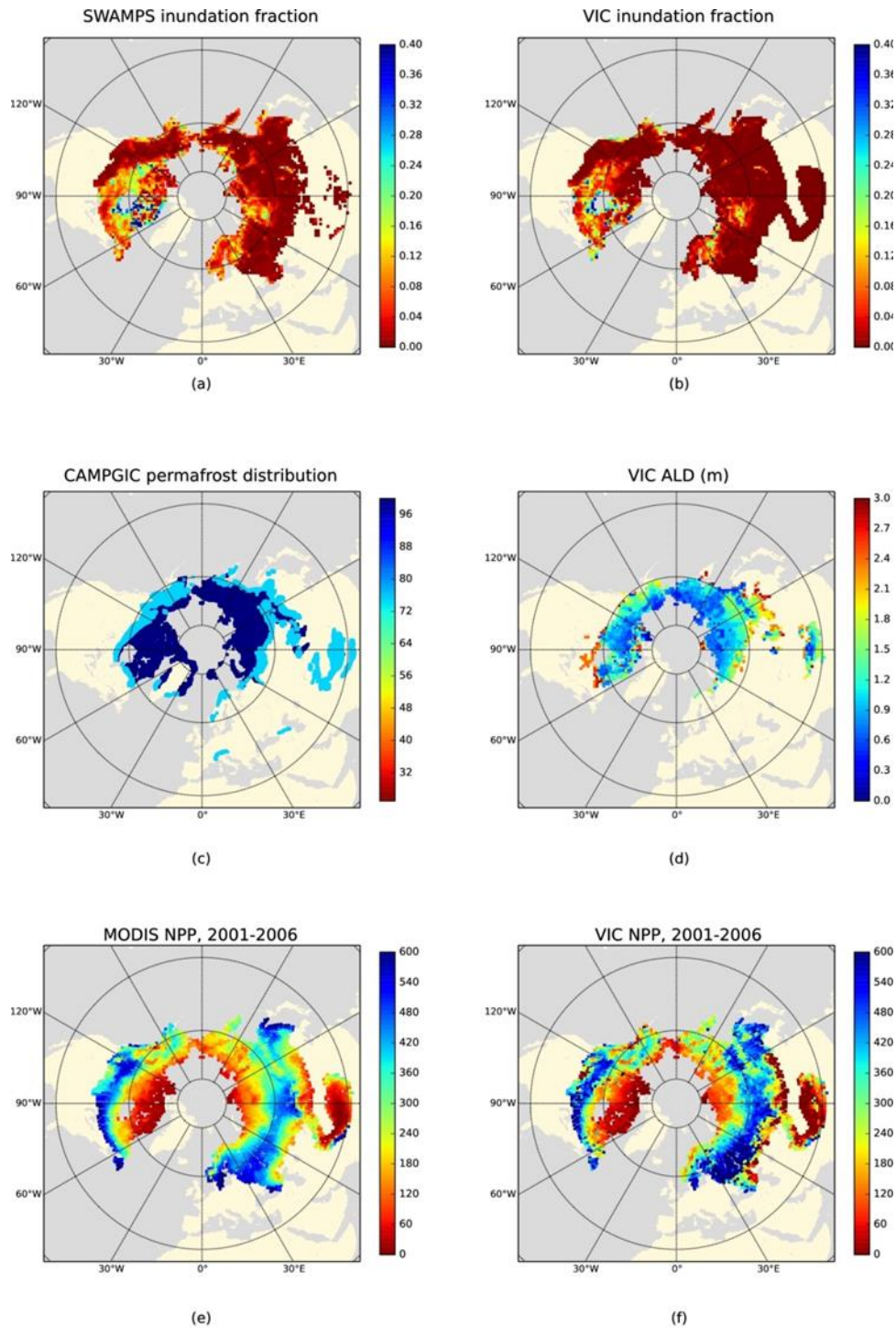


Figure 1. Relevant characteristics of study domain: (a) spatial extent of the domain; (b) lake/wetland area fractions (taken from Lehner and Döll, 2004, and Tarnocai et al., 2009; see text for details); (c) July LAI (taken from Myneni et al., 2002); (d) permafrost distribution (taken from Brown et al., 2014).



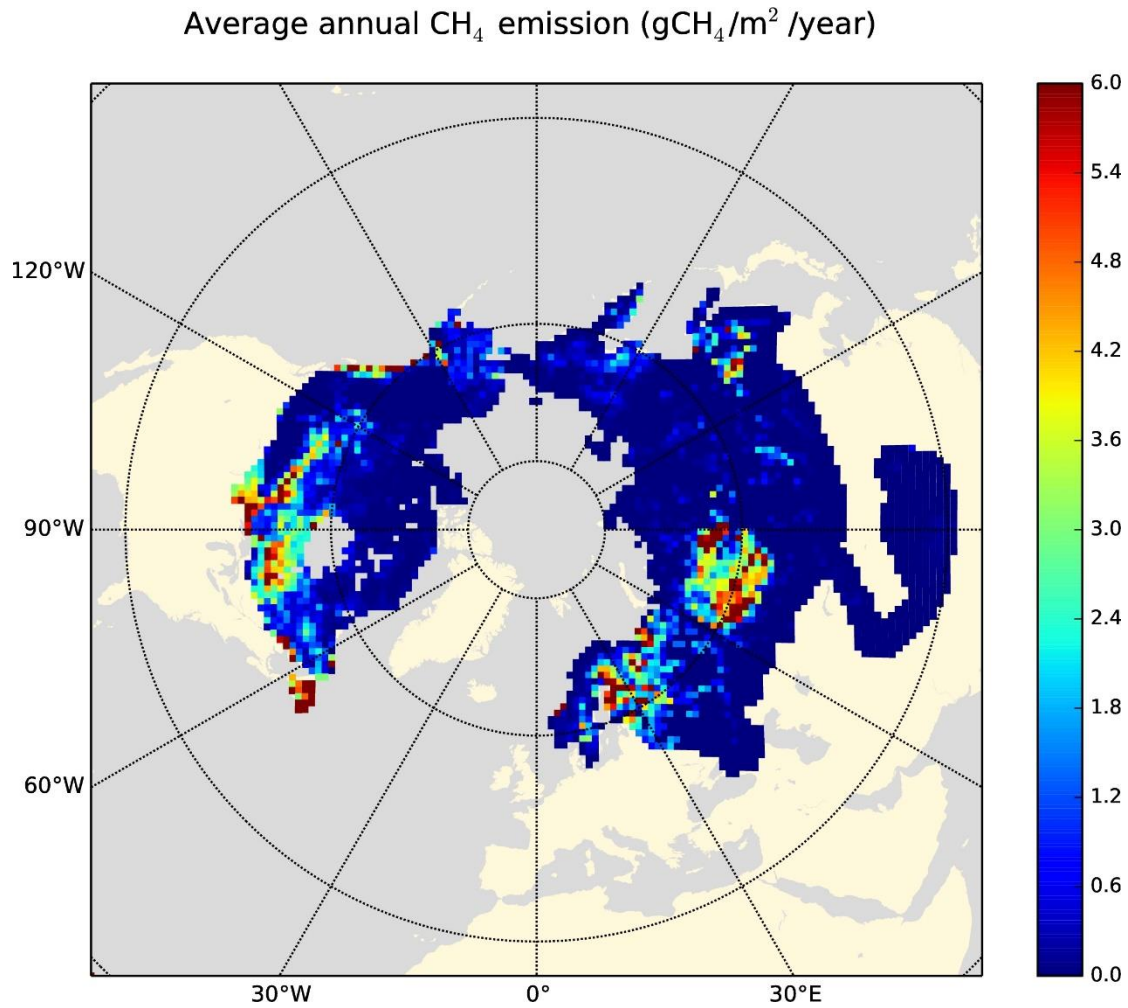
1

2 Figure 2. Observed and simulated factors relevant to wetland methane emissions over the
3 study domain: (a) observed June-July-August average (JJA) inundated area fraction over
4 2002-2010 from SWAMPS (Schroeder et al., 2010); (b) simulated JJA inundated area fraction
5 over 1948-2006; (c) observed permafrost distribution from CAMPGIC (Brown et al., 2014)
6 (dark blue = continuous permafrost, light blue = discontinuous permafrost); (d) simulated
7 maximum active layer depth (ALD) over 1948-2006; (e) observed JJA net primary

1 productivity (NPP) over 2002-2010 (Running et al., 2004); (f) simulated JJA LAI over 1948-
2 2006.

3

4



5

6 Figure 3. Average annual CH₄ emissions over the study domain, 1960-2006.

7

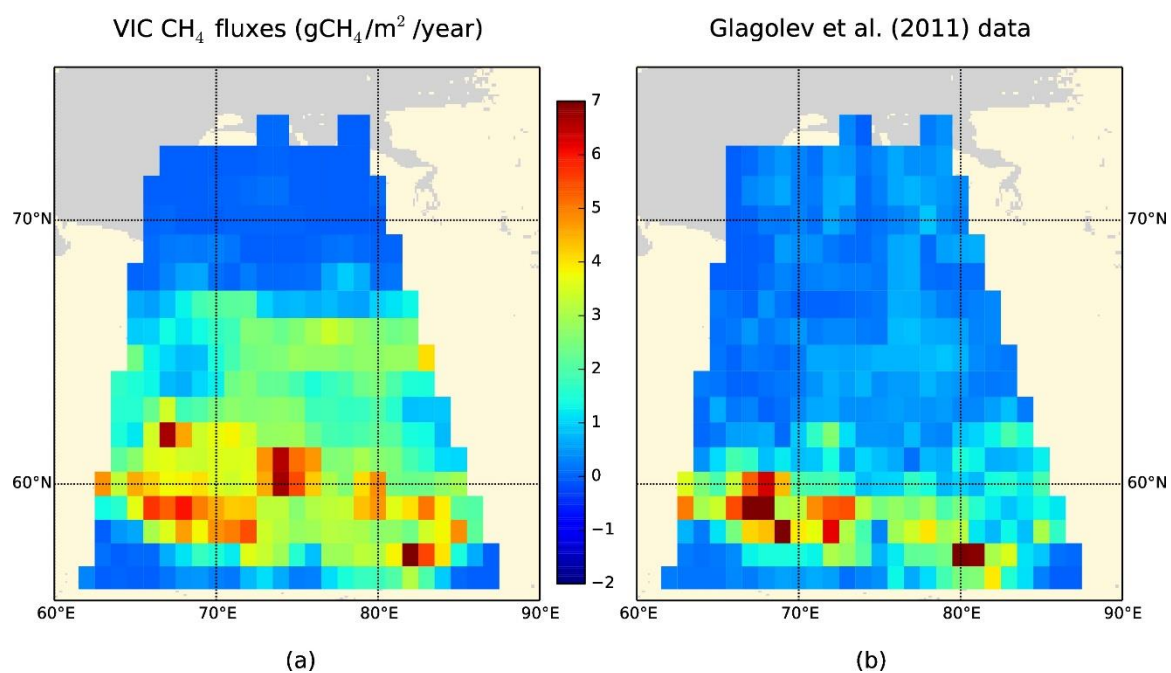


Figure 4. Comparison of simulated CH₄ emission rate and field campaign based data over WSL. (a) VIC simulated fluxes; (b) field campaign data based fluxes data from Glagolev et al. (2011).

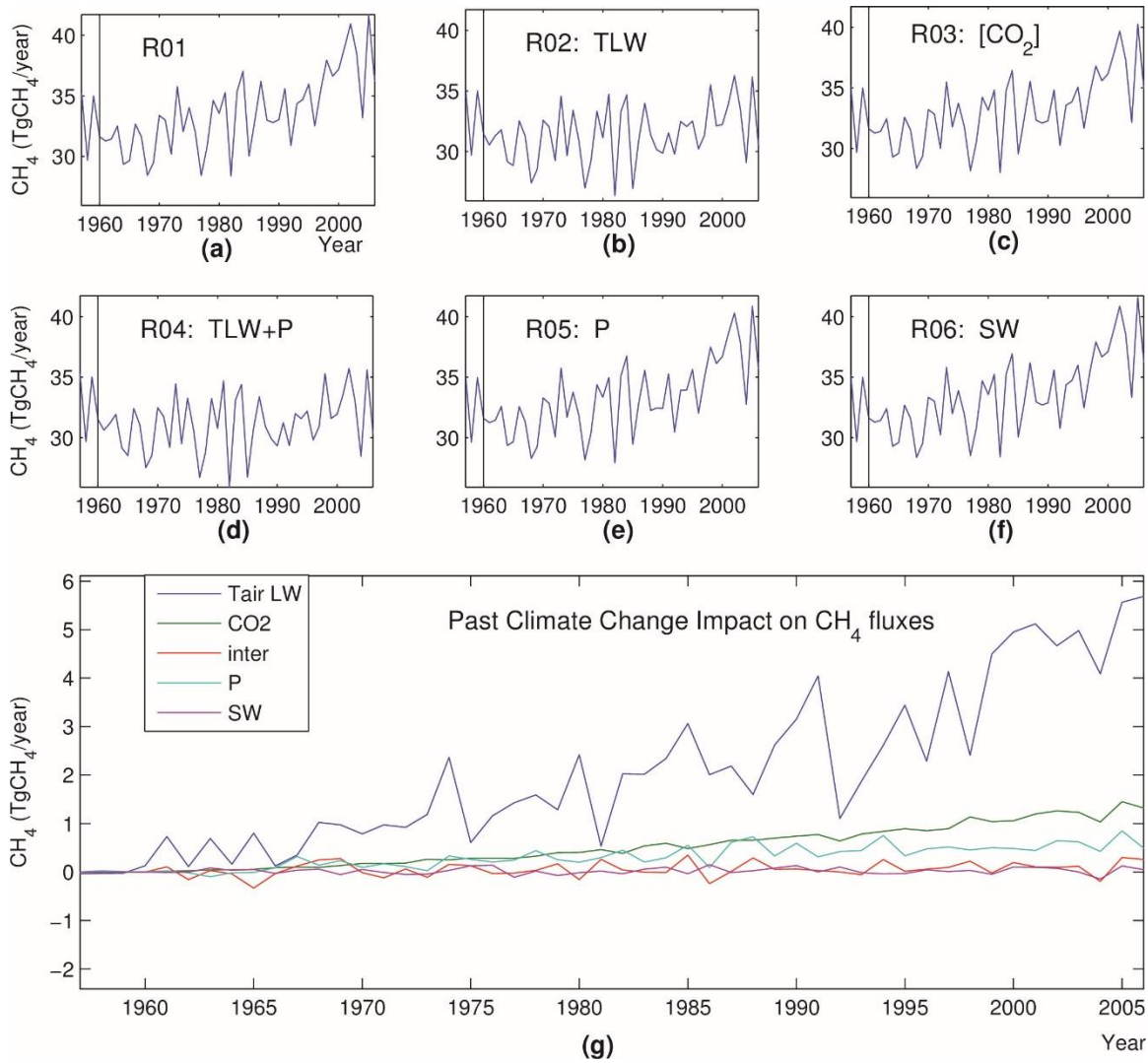


Figure 5. Timeseries of domain-averaged annual methane fluxes from (a) the historical simulation; (b-f) the five climate control runs, in each of which one climate driver was detrended starting in 1960; (g) differences between historical simulation in (a) and the control runs (b-f). “TLW” and “Tair LW” denote detrending of air temperature and associated downward longwave radiation; “ CO_2 ” denotes detrending of atmospheric CO_2 concentrations; “TLW+P” denotes detrending of both air temperature (and associated longwave radiation) and precipitation; “P” denotes detrending of precipitation; “SW” denotes detrending of downward shortwave radiation; and “inter” denotes the difference between “TLW” and “TLW+P”.

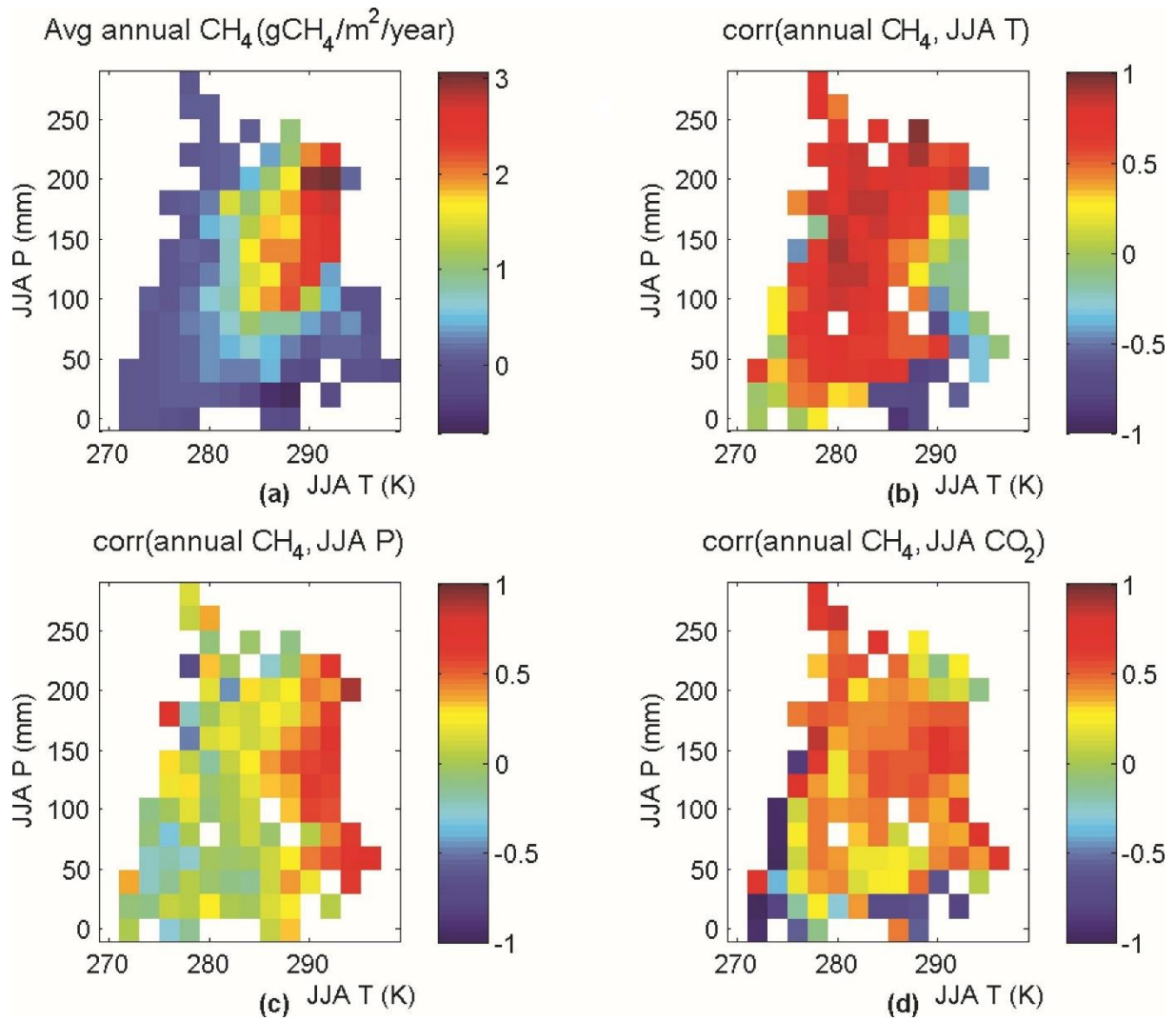


Figure 6. (a) the 1960-2006 average annual CH_4 emission over JJA (June-July-August) T and JJA P space; (b)-(d) correlation between 1960-2006 annual CH_4 emission and JJA drivers in the same T-P space.

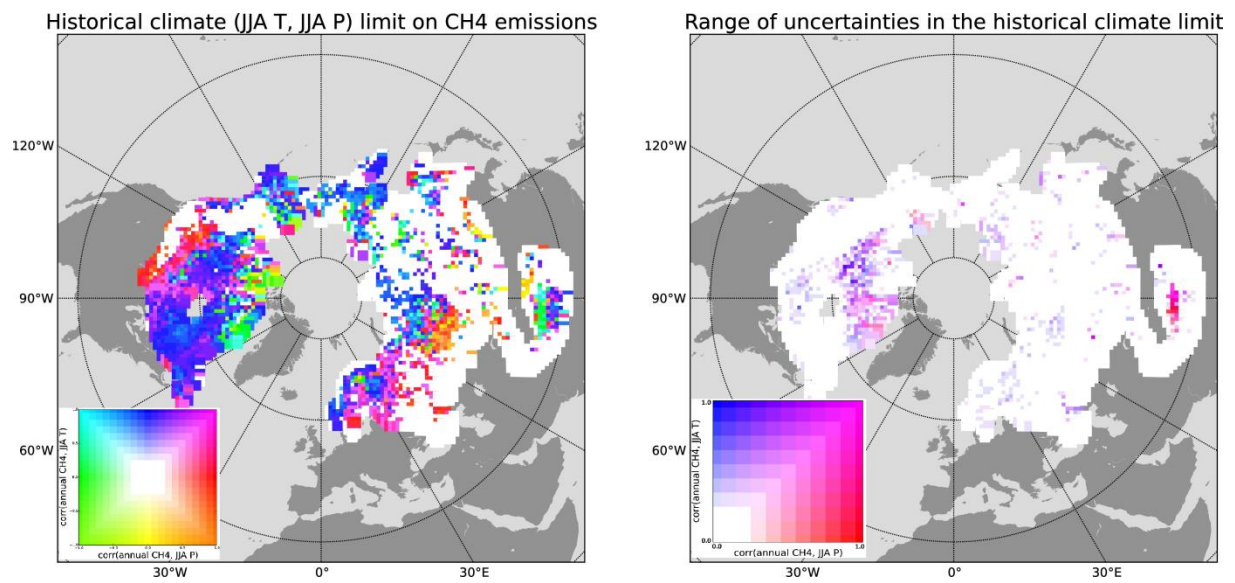
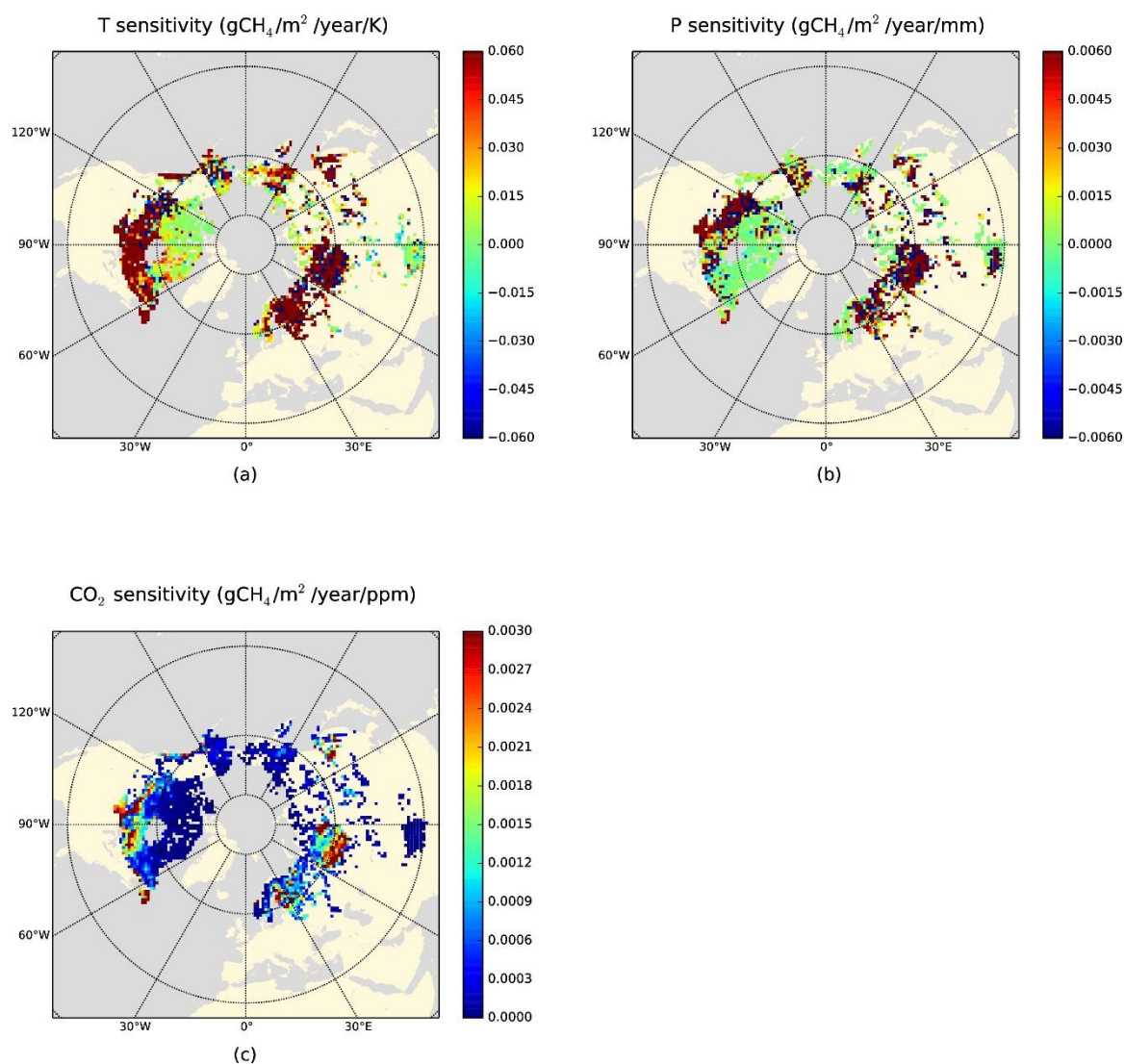


Figure 7. Spatial distributions of ensemble median (left) and range at 95% confidence level (right) of correlations between annual CH₄ emissions and JJA T and P.



1
2 Figure 8. Spatial distributions of sensitivities of CH_4 to climate drivers. (a) sensitivity to air
3 temperature; (b) sensitivity to precipitation; (c) sensitivity to $[\text{CO}_2]$.

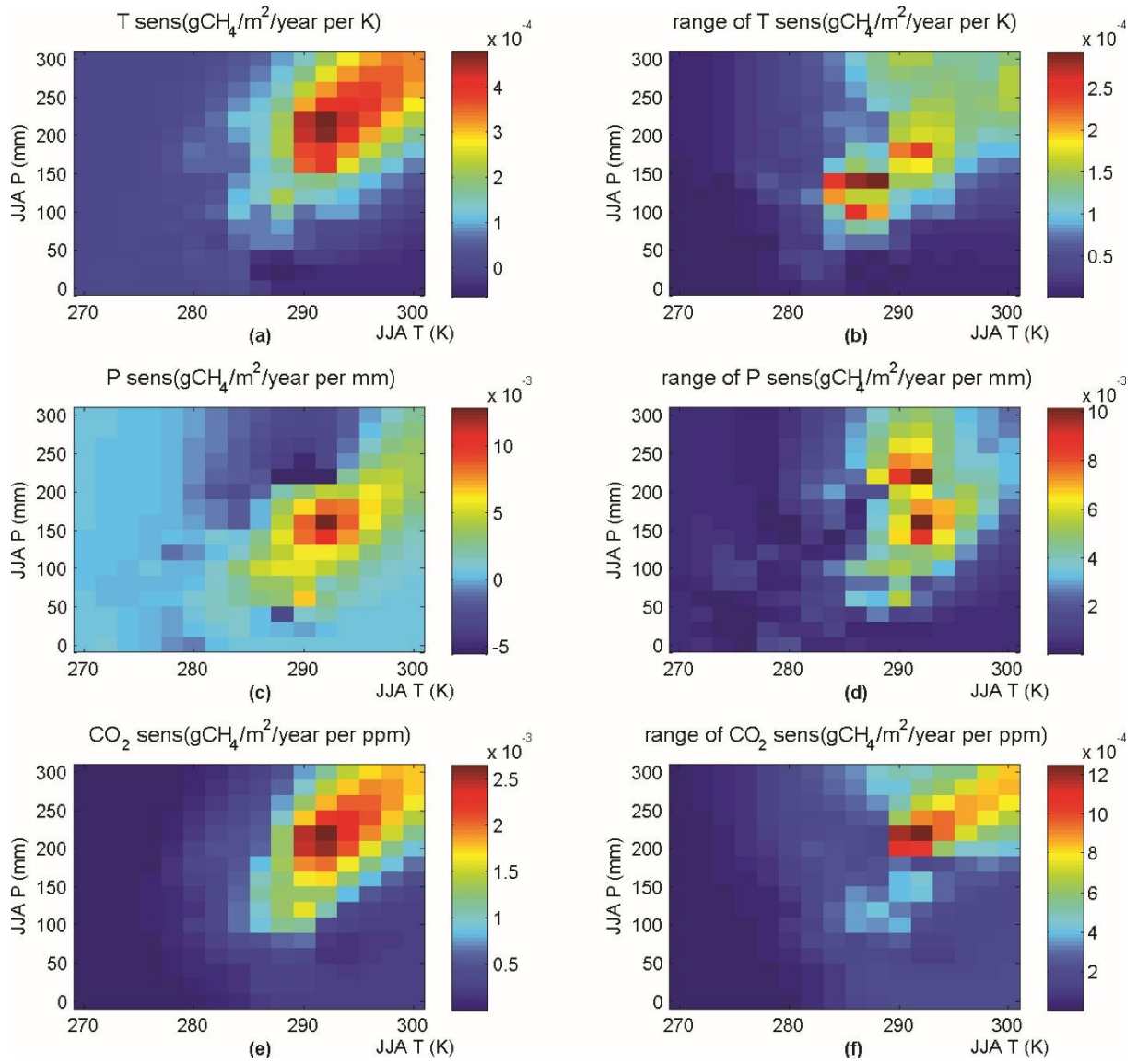


Figure 9. The 1960-2006 average T, P and CO₂ sensitivities of CH₄ emissions in JJA T and JJA P space using the median methane model parameter set (panels a, c, and e, respectively) and their ranges at the 95% confidence level across randomly-sampled methane model parameter sets (panels b, d, and f, respectively).

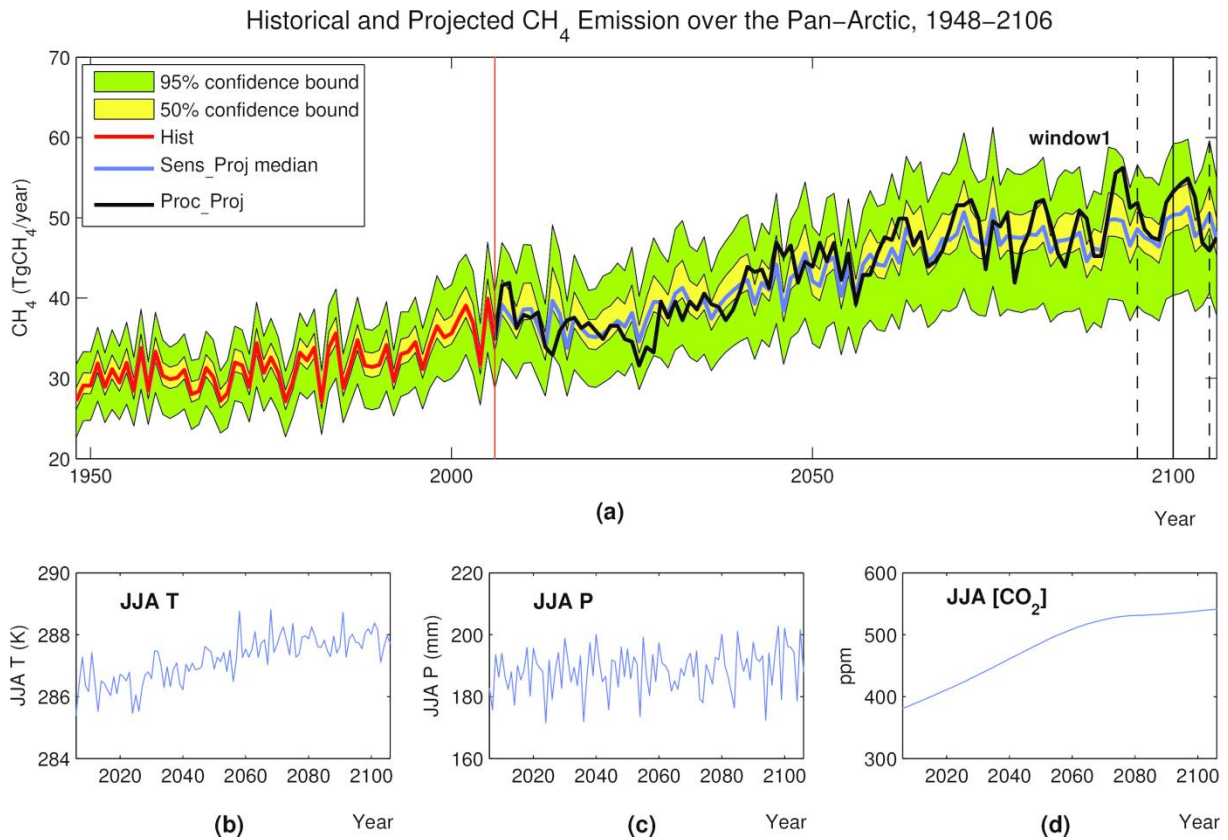
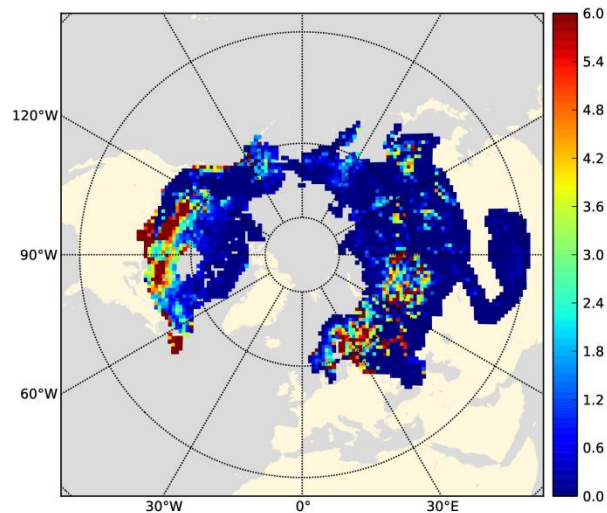


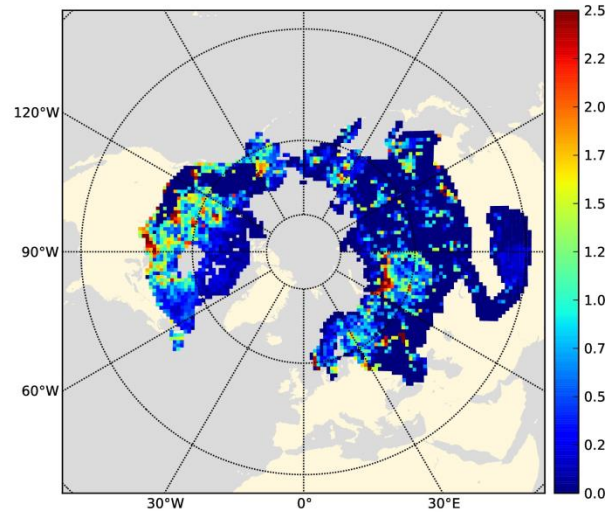
Figure 10. Historical and projected annual methane emissions and climate drivers over the pan-Arctic, 2007-2106. (a) Sensitivity- and process-based projections (blue and black, respectively) of methane emissions from northern wetlands during 2007-2106, with historical simulation (red) 1948-2006. Parameter-based uncertainties in the sensitivity-based projection are plotted as the yellow and green envelopes (50% and 95% confidence bounds, respectively); (b)-(d) climate conditions for projections. The end-of-century window for time slice analysis (2096-2105) is denoted with vertical solid and dashed lines in panel (a).

median of 2096-2105 avg CH₄ (gCH₄/m²/year)



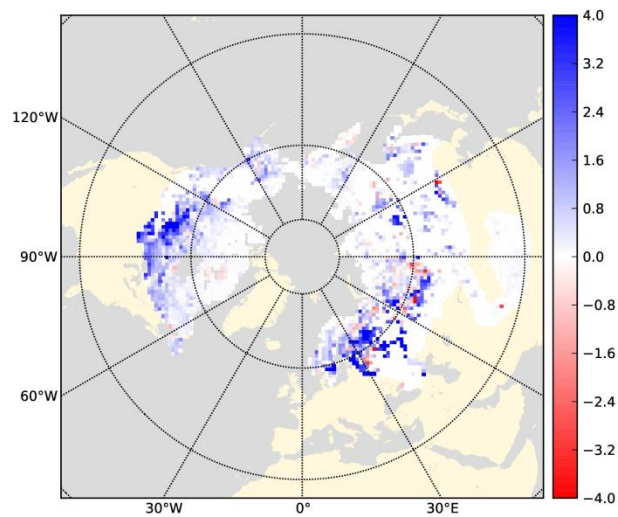
(a)

range of 2096-2105 avg CH₄ (gCH₄/m²/year)



(b)

difference from 2006 (gCH₄/m²/year)



(c)

1
2 Figure 11. Ensemble median (a) and range (b) of average annual end-of-century (2096-2105)
3 CH₄ emissions for the sensitivity-based projection, and difference between the median and the
4 annual emissions of year 2006 (c).

5

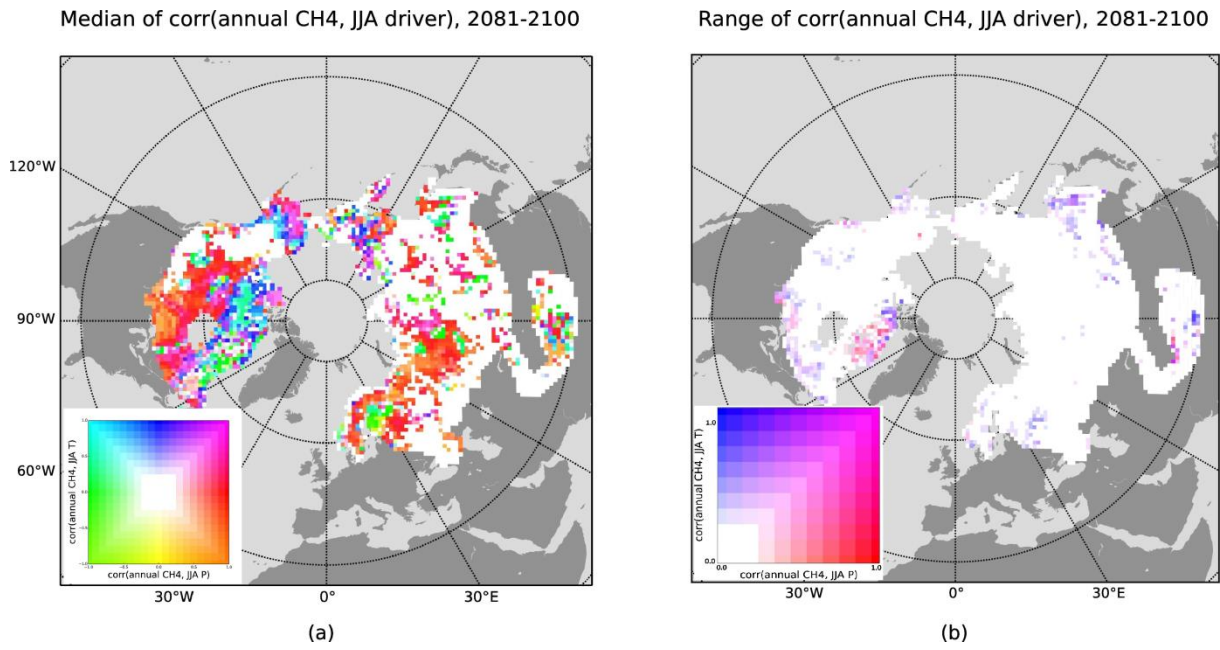


Figure 12. Spatial distributions of ensemble median (left) and range at 95% confidence level (right) of correlations between annual CH₄ emissions and JJA T and P, for the period 2081-2100 of the sensitivity-based projection.

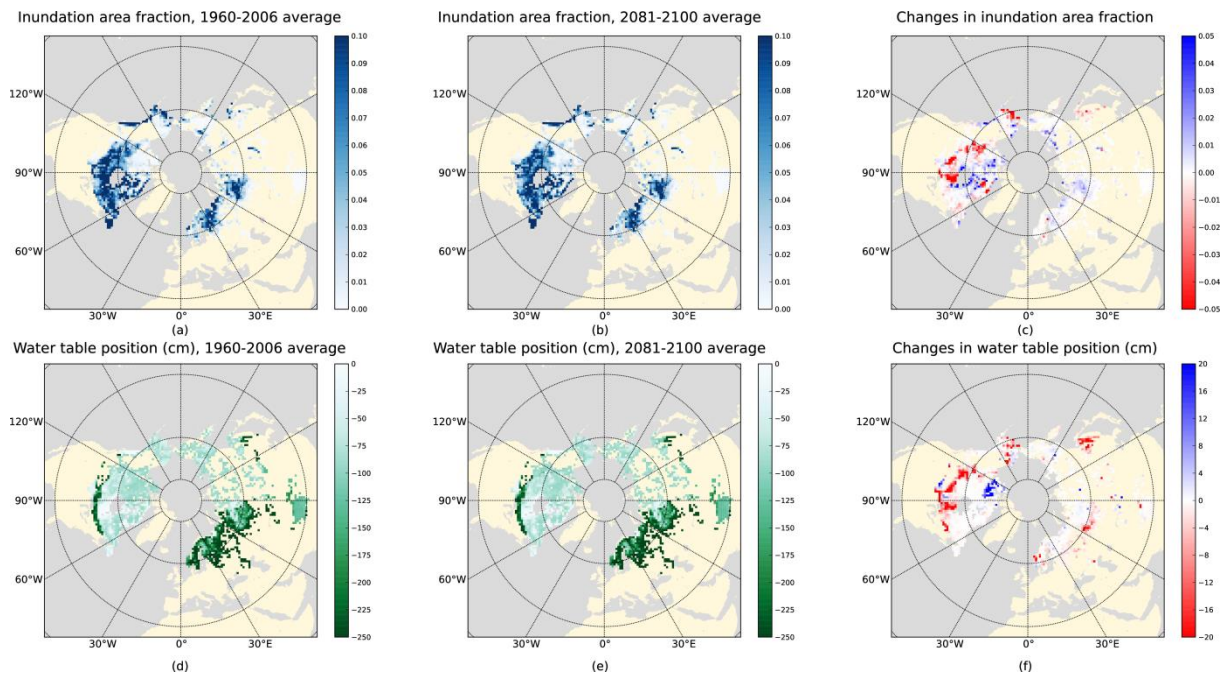


Figure 13. Changes in inundated area fraction and water table position during the historical period (1960-2006) and projection period (2081-2100) for the process-based projection. Panel (a) is the average inundation fraction during 1960-2006, (b) is the average of 2081-2100; (c)

1 is the difference between these 2 averages (panel b - a). Panels (d)-(f) are similar for water
2 table positions.
3