



This discussion paper is/has been under review for the journal Biogeosciences (BG).
Please refer to the corresponding final paper in BG if available.

GDGT distributions in the East Siberian Sea: implications for organic carbon export, burial and degradation

R. B. Sparkes¹, A. Doğrul Selver¹, J. Bischoff², H. M. Talbot², Ö. Gustafsson³,
I. P. Semiletov^{4,5,6}, O. V. Dudarev^{5,6}, and B. E. van Dongen¹

¹School of Earth, Atmospheric and Environmental Sciences and Williamson Research Centre, University of Manchester, UK

²School of Civil Engineering and Geosciences, Newcastle University, UK

³Department of Applied Environmental Science (ITM) and the Bolin Centre for Climate Research, Stockholm University, Sweden

⁴Pacific Oceanological Institute Far Eastern Branch of the Russian Academy of Sciences, Russia

⁵International Arctic Research Center, University of Alaska, USA

⁶National Tomsk Research Polytechnic University, Russia

Received: 24 October 2014 – Accepted: 9 December 2014 – Published: 12 January 2015

Correspondence to: R. B. Sparkes (robert.sparkes@manchester.ac.uk)

Published by Copernicus Publications on behalf of the European Geosciences Union.

BGD

12, 637–674, 2015

GDGT distributions on the East Siberian Shelf

R. B. Sparkes et al.

Title Page

Abstract

Introduction

Conclusions

References

Tables

Figures



Back

Close

Full Screen / Esc

Printer-friendly Version

Interactive Discussion



Abstract

Siberian permafrost contains a globally-significant pool of organic carbon (OC) that is vulnerable to enhanced warming and subsequent release into the contemporary carbon cycle. OC release by both fluvial and coastal erosion has been reported in the region, but the behaviour of this material in the Arctic Ocean is insufficiently understood. The balance between OC deposition and degradation on the East Siberian Arctic Shelf (ESAS) influences the climate-carbon cycle feedback in this area. In this study we couple measurements of glycerol dialkyl glycerol tetraethers (GDGTs) with bulk geochemical observations to improve knowledge of the sources of OC to the ESAS, the behaviour of specific biomarkers on the shelf and the balance between delivery and removal of different carbon pools. Branched GDGT (brGDGT) concentrations were highest close to river mouths, yet low in “Yedoma” permafrost deposits, supporting recent observations that brGDGTs are mostly delivered by fluvial erosion, and may be a tracer for this in complex sedimentary environments. BrGDGT concentrations and the Branched and Isoprenoidal Tetraether (BIT) index reduced quickly offshore, demonstrating a rapid reduction in river influence. Stable carbon isotope ratios changed at a different rate to the BIT index, suggesting that OC on the shelf is not only sourced from fluvial erosion, but that erosion of coastal sediments delivers substantial quantities of OC to the Arctic Ocean. A model of OC export from fluvial, coastal and marine sources is able to recreate the biomarker and bulk observations and provide estimates for the influence of fluvial and coastal OC across the whole shelf. The model shows that coastal erosion delivers 43 % of the OC and 87 % of the mineral sediment to the ESAS, but that rivers deliver 72 % of brGDGTs, indicating that brGDGTs can be used as a proxy for river-derived sediment.

BGD

12, 637–674, 2015

GDGT distributions on the East Siberian Shelf

R. B. Sparkes et al.

Title Page

Abstract

Introduction

Conclusions

References

Tables

Figures



Back

Close

Full Screen / Esc

Printer-friendly Version

Interactive Discussion



1 Introduction

Understanding natural processes and feedbacks within the global carbon cycle is necessary for a comprehensive understanding of Earth System dynamics and of continuing climate change. High latitudes account for nearly half of the global soil carbon stores (Tarnocai et al., 2009), and are a poorly-understood region. Arctic permafrost carbon, in the form of tundra and taiga (~ 1000 PgC), terrestrial ice complexes (~ 400 PgC) and submarine permafrost (~ 1400 PgC) significantly outweighs the atmospheric CO₂ pool (~ 760 PgC) (Soloviev et al., 1987; Zimov et al., 2006; Tarnocai et al., 2009; Shakhova et al., 2010b, a; Semiletov et al., 2011), and is liable to become an active part of the carbon cycle in the region during the next century (Gustafsson et al., 2011). Observations and predictions of global climate change have shown that the Polar Regions are disproportionately affected by temperature increases (IPCC, 2013), leading to increased permafrost thawing, erosion of coastal permafrost and destabilisation of submarine permafrost (Semiletov, 1999a, b; Shakhova et al., 2009, 2014; Vonk et al., 2012).

Recent experiments showed that long-term warming of permafrost reorganises the soil carbon stock, increasing decomposer activity in the mineral soil layer while also increasing the vegetation stock at the surface (Sistla et al., 2013). Changing pervasiveness of permafrost (i.e. from continuous to discontinuous coverage) introduces permeability, and allows groundwater flow to interact with deeply-buried carbon (Gustafsson et al., 2011; Feng et al., 2013). This activation of deep carbon will not only lead to direct oxidation and CO₂ release but also to increased erosion and offshore transport from the permafrost layer to the Arctic Ocean, enhanced by (already observed) increased river discharge (Savelieva et al., 2000; Semiletov et al., 2000, 2013; Peterson et al., 2002). Ultimately these processes will lead to increased input of terrestrial organic carbon (terrOC) to the Arctic Ocean where it can interact with the biosphere. However, the fate of terrOC in the Arctic Ocean remains poorly understood.

BGD

12, 637–674, 2015

GDGT distributions on the East Siberian Shelf

R. B. Sparkes et al.

Title Page

Abstract

Introduction

Conclusions

References

Tables

Figures



Back

Close

Full Screen / Esc

Printer-friendly Version

Interactive Discussion



GDGT distributions on the East Siberian Shelf

R. B. Sparkes et al.

Title Page

Abstract

Introduction

Conclusions

References

Tables

Figures



Back

Close

Full Screen / Esc

Printer-friendly Version

Interactive Discussion



Carbon stored within frozen soils and ice complexes is only released to the atmosphere if it becomes an active part of the carbon cycle. Inert transport from terrestrial to submarine storage (e.g. deposition as organic-rich sediment) has no net effect on global atmospheric carbon dioxide levels. However, any degradation during transport and deposition of carbon, previously sequestered for thousands of years, will release CO₂ to the atmosphere (Arndt et al., 2013), causing a positive feedback effect on climate change. Some studies of global offshore terrOC burial have argued that there is extensive remineralisation once terrestrial material is delivered to the oceans (Hedges et al., 1997; Semiletov et al., 2007, 2012), whilst others have documented significant offshore terrOC burial, even over long transport distances (Galy et al., 2007; Kao et al., 2014). Therefore, understanding the fate of terrOC after it is transported to the Arctic marine environment is critical to quantify the carbon cycle in the polar region.

Recently, a number of studies were published focusing on bulk and molecular level investigations of sediments exported from the Canadian and Siberian regions, attempting to better understand the behaviour of terrOC in lakes, rivers, estuaries and shelves (Cooke et al., 2008; Drenzek et al., 2007; Feng et al., 2013; Goñi et al., 2005; Guo et al., 2004; Gustafsson et al., 2011; Semiletov, 1999a, b; Semiletov et al., 2011; Tesi et al., 2014; van Dongen et al., 2008; Vonk et al., 2012). These studies have shown the presence of terrOC in marine settings offshore major Arctic rivers, and a transition from terrestrial- to marine-dominated geochemical signatures with increasing distance offshore. TerrOC input from coastal erosion is also a significant part of the Arctic carbon cycle (Semiletov et al., 2005, 2011, 2013; Vonk et al., 2012), and up to 44 ± 10 MT of terrOC may be mobilised from permafrost coastal erosion each year. The distribution of stable carbon isotopes in sedimentary organic carbon $\delta^{13}\text{C}_{\text{SOC}}$ in marine sediments was used to distinguish between the two biogeochemical provinces, western and eastern, in the East Siberian Arctic Shelf (ESAS) (Semiletov et al., 2005).

Glycerol dialkyl glycerol tetraethers (GDGTs) have been identified as biomarker molecules for terrestrial and marine organic matter (Schouten et al., 2013; Sinninghe Damsté et al., 2002). Sourced from the cell membranes of bacteria and thau-

marchaeota, they have been found in a range of terrestrial and marine sediments dating back millions of years (Schouten et al., 2013). Branched GDGTs (brGDGTs) contain 4–6 methyl branches along two C₂₈ alkyl chains (Fig. S1) and are produced by terrestrial bacteria in peats and soils (Weijers et al., 2006, 2007). They have also been found to be abundant in other terrestrial settings, including lakes and rivers (Blaga et al., 2009; De Jonge et al., 2014). Isoprenoidal GDGTs contain two C₄₀ isoprenoid chains with varying number of cyclopentane rings. One of these, Crenarchaeol (Cren), which is dominantly produced by marine thaumarchaeota, contains a cyclohexane unit in addition to 4 cyclopentane rings (Fig. S1). The ratio of brGDGTs to Cren forms the basis of the Branched and Isoprenoidal Tetraether (BIT) index (Hopmans et al., 2004), a proxy for tracing terrestrial material in marine sediments. The BIT index has been used to infer terrestrial to marine transitions along river-ocean transects in (sub)-Arctic and non-Arctic Regions (Kim et al., 2006; Zhu et al., 2011; Doğrul Selver et al., 2012). Recent studies have inferred that a portion of the brGDGTs in the Arctic region may be produced within rivers, rather than being harvested entirely from soil erosion during the freshet, and that brGDGTs and BIT can be used to trace fluvial erosion offshore (De Jonge et al., 2014; Kim et al., 2014; Peterse et al., 2014). Therefore the relationship between river outflows and the Arctic Shelf is worth investigation to understand the delivery of organic matter to the Arctic Ocean and its eventual fate. Differences in amount, distribution and eventual fate between coastal and fluvial OC delivery can have severe implications for climate change and feedbacks.

This study aims to use a combination of GDGT biomarkers and stable carbon isotope proxies measured on a series of surface sediments from across the entire ESAS, including transects of the major Russian Arctic Rivers in this area (Lena, Indigirka and Kolyma) and areas of coastal erosion, to investigate the transport and fate of terrestrial organic carbon in a region which has experienced little scientific investigation but is likely to experience extreme climate change in the next century. Combining these proxies allows us to (i) differentiate between the different fractions of terrOC (coastal ice complex OC and river transported terrOC) which will likely have different degradation

BGD

12, 637–674, 2015

GDGT distributions on the East Siberian Shelf

R. B. Sparkes et al.

Title Page

Abstract

Introduction

Conclusions

References

Tables

Figures



Back

Close

Full Screen / Esc

Printer-friendly Version

Interactive Discussion



potentials and (ii) observe whether bulk terrOC and a specific fraction of the terrOC behave similarly.

2 Methods

2.1 Study area and sample collection

5 Samples used in present study were collected from across the ESAS (130 to 175° E; Fig. 1). This area, including the Laptev and East Siberian Seas, spans the outflows of the Lena, Yana, Indigirka and Kolyma rivers, with a combined drainage area of 3.7 km × 106 km and a discharge of $7.3 \times 10^{11} \text{ m}^3 \text{ y}^{-1}$ (Gordeev, 2006) (see Table S1). Annual organic carbon export into the Laptev and East Siberian seas is estimated
10 as 10.22 MtCy^{-1} (Rachold et al., 2002). The Lena River is the largest of the rivers in this region and forms a substantial delta reaching in to the Arctic Ocean, whilst the other three form smaller, more tide-dominated deltas. Due to a reduction in protective sea ice, potentially enhanced by climate warming, this region is also the site of severe coastal erosion of terrestrial ice complexes, which has been estimated to
15 deliver $44 \pm 10 \text{ MtCy}^{-1}$ to the East Siberian Shelf (Vonk et al., 2012). Focussing on the drainage basins, Eastern Siberia is a region with predominantly continuous permafrost, with the subsoil remaining permanently below 0°C and being impermeable to water flow (van Everdingen, 1998). Eurasian permafrost soils contain 120 000 MtC, of which 74 % is stored within continuous permafrost (Tarnocai et al., 2009), with the majority of the continuous permafrost existing within the East Siberian region. At the
20 surface there are many small lakes and seasonal ice cover for up to nine months per year, with the majority of the sediment and water discharge during the early summer (Gordeev, 2006). Offshore there is a narrow channel between the coastline at ~ 140° E and the New Siberian Islands, known as the Dmitry Laptev Strait (DLS) splitting the
25 ESAS up into two distinct areas, the Laptev Sea and East Siberian Sea (Fig. 1). The New Siberian Islands themselves are remnants of the Great Arctic Plain, which once

BGD

12, 637–674, 2015

GDGT distributions on the East Siberian Shelf

R. B. Sparkes et al.

Title Page

Abstract

Introduction

Conclusions

References

Tables

Figures

◀

▶

◀

▶

Back

Close

Full Screen / Esc

Printer-friendly Version

Interactive Discussion



GDGT distributions on the East Siberian Shelf

R. B. Sparkes et al.

Title Page

Abstract

Introduction

Conclusions

References

Tables

Figures

◀

▶

◀

▶

Back

Close

Full Screen / Esc

Printer-friendly Version

Interactive Discussion



covered 1.6 km × 106 km between the modern coastline and the shelf edge, and was inundated during the Early-Middle Holocene, and now exists as substantial subsea permafrost (Kienast et al., 2005; Weijers et al., 2006; De Jonge et al., 2014). Samples in this study have been grouped based on their location on the ESAS. Mostly, samples have been grouped longitudinally, into the Buor-Khaya Bay and associated region offshore the Lena River, the DLS, the region offshore the Indigirka River and the region offshore the Kolyma River. The Indigirka and Kolyma offshore regions are generally equivalent to the Western and Eastern East Siberian Sea regions, respectively, as identified by Semiletov et al. (2005). The ESAS samples have also been classified latitudinally, into the Nearshore ESAS (< 150 km from river outflows) and Offshore ESAS (> 150 km from river outflows). In total, 92 sediment samples were collected in September 2008 during the International Siberian Shelf Study expedition (ISSS-08; Semiletov and Gustafsson, 2009; Fig. 1), along with six samples from terrestrial Yedoma. Briefly, sediment cores and surface sediments were collected with a dual gravity corer (GEMAX) and a van Veen grab sampler. The sediment cores were sliced into 1 cm sections and, transferred to pre-cleaned polyethylene containers with stainless steel spatulas. Similarly, surface sections of the grab samples were obtained with stainless steel spatulas, transferred to pre-cleaned polyethylene containers. Terrestrial Yedoma samples were collected from river bank erosion profiles near to the mouths of the Indigirka and Kolyma rivers (Tesi et al., 2014). All sediments were kept frozen until analysis, in order to mitigate microbial degradation, and subsequently preserved by freeze- or oven-drying (50 °C).

2.1.1 Extraction and instrumental analysis

Freeze dried sediment samples were extracted using a modified Bligh–Dyer method as described by Tierney et al. (2012). Approximately five g (dry wt.) of sediment were ultrasonically extracted (at 40 °C for 10 min) using 19 mL of a mixture of methanol: dichloromethane: aqueous phase (MeOH : DCM : aqueous phase, 2 : 1 : 0.8 v/v/v) with the aqueous phase consisting of 0.05 M phosphate buffer at pH 7.4. Samples were cen-

trifuged for five minutes at 2500 r.p.m., supernatants were collected and the extractions were repeated two additional times using the same solvent mixture. The DCM fractions were recovered by addition of 5 mL each of phosphate buffer and DCM to the supernatants. Combined DCM fractions were rotary evaporated to near dryness, transferred to vials using a solution of DCM : MeOH (2 : 1 v/v) and evaporated to dryness under a stream of N_2 to obtain the total lipid extract (TLE). Aliquots (1/3 of the TLE) were separated into core lipid (CL) and intact polar lipid (IPL) fractions using silica column chromatography with 4 mL hexane : ethyl acetate (1 : 1, v/v) and 8 mL MeOH as eluents, respectively. After separation, 0.2 μ g of a synthetic C_{46} GDGT standard was added to the CL fractions, which were dried under N_2 , re-dissolved in Hexane : Isopropanol (99 : 1 v/v) and filtered through a 0.45 μ m PTFE filter. GDGTs analysis was carried out on the CL fractions via high performance liquid chromatography-atmospheric pressure chemical ionization-mass spectrometry (HPLC-APCI-MS) using the method reported by Hopmans et al. (2004). Analyses were performed using an Agilent 1200 HPLC coupled to an Agilent 6130 quadrupole MS instrument equipped with a multimode source operated in APCI positive ion mode using a similar instrumental setup as described by McClymont et al. (2012). The GDGTs were analysed using normal phase LC-MS with a Grace Prevail Cyano HPLC column (3 μ m, 150 mm x 2.1 mm i.d.) and a guard column of the same material. Separation was achieved at 30 °C with a flow rate of 0.2 mL min⁻¹ and the following gradient profile: 1 % isopropanol (IPA) in hexane (0–5 min), 1.8 % IPA in hexane (at 25 min) and 10 % IPA in hexane (at 30 min, held for 10 min). Conditions for APCI were: nebulizer pressure 20 psig, vaporiser temperature 250 °C, drying gas (N_2) flow 6 L min⁻¹ and temperature 200 °C, capillary voltage 2 kV and corona 5 μ A. In order to increase sensitivity/reproducibility, ion scanning was performed in single ion monitoring (SIM) mode using GDGT $[M+H]^+$ ions. Peak areas were measured, and concentrations of individual GDGTs were calculated using a combination of the peak area of the C_{46} synthetic standard and a series of response factors for each GDGT calculated based on the peak areas of multiple runs of standard samples with known concentrations of brGDGTs, Cren and C_{46} standard. This corrects for the differences in

GDGT distributions on the East Siberian Shelf

R. B. Sparkes et al.

Title Page

Abstract

Introduction

Conclusions

References

Tables

Figures



Back

Close

Full Screen / Esc

Printer-friendly Version

Interactive Discussion



GDGT distributions
on the East Siberian
Shelf

R. B. Sparkes et al.

Title Page

Abstract

Introduction

Conclusions

References

Tables

Figures

◀

▶

◀

▶

Back

Close

Full Screen / Esc

Printer-friendly Version

Interactive Discussion



ionisation between compounds, as shown by Schouten et al. (2013). Previous studies showed that a proportion of CL may carry over into the IPL fractions (Weijers et al., 2011) and a correction may be applied for this. However, this carry-over was insignificant, up to 2 % of the CL fractions. In the present study, a correction factor was not applied for this issue but it may be that the GDGT concentrations are up to 2 % higher than is reported. BIT index values were calculated according to the corrected peak areas of the branched GDGTs and crenarchaeol, following the method of Hopmans et al. (2004):

$$\text{BIT} = \frac{(\text{brGDGT I} + \text{II} + \text{III})}{(\text{brGDGT I} + \text{II} + \text{III} + \text{Cren})} \quad (1)$$

The BIT index returns a value of approximately one in a purely terrestrial setting, and zero in a marine setting. Cren can be found in some terrestrial settings, including soils and rivers (Weijers et al., 2006; Zell et al., 2013; De Jonge et al., 2014) leading to BIT measurements of slightly less than one.

3 Results and discussion

Sedimentary [Total] Organic Carbon (SOC) data (from Vonk et al., 2012) ranged from 0.68 to 2.25 wt. % C. TOC concentration was highest in the Buor-Khaya Bay, and relatively uniform across the rest of the ESAS. 0–100 km from the river outflows, TOC averaged 1.81 ± 0.10 %, 100–800 km away it averaged 0.88 ± 0.06 % (Table 1).

3.1 GDGT concentrations

LCMS analysis showed a wide range of concentrations for both brGDGTs and crenarchaeol throughout the sediments (Fig. 2a and b). BrGDGT concentrations ranged from below detection limit (BDL) to $180 \mu\text{g g}_{\text{SOC}}^{-1}$ ($2046 \text{ ng g}_{\text{sed}}^{-1}$) with the highest concentrations observed close to river mouths – especially the Lena River, which is the largest of

the rivers in the study area and exports the largest amount of sediment ($20 \times 10^6 \text{ tyr}^{-1}$; Gordeev, 2006). Within the Buor-Khaya Bay, brGDGT concentrations were highest in the south-western corner of the bay, beside the major outflows of the Lena Delta, and reduced with distance across the bay. Nearshore ESAS samples, less than 150 km from the river mouths, averaged $30 \mu\text{g g}_{\text{SOC}}^{-1}$ ($203 \text{ ng g}_{\text{sed}}^{-1}$) whilst samples > 150 km offshore averaged $14 \mu\text{g g}_{\text{SOC}}^{-1}$ ($136 \text{ ng g}_{\text{sed}}^{-1}$; Fig. S2a).

When plotted against the distance from river outflows, the offshore trend in brGDGT concentrations showed a rapid decrease in concentration (Fig. 3a). Samples within 100 km of the river mouths had an average brGDGT concentration of $38 \pm 3 \mu\text{g g}_{\text{SOC}}^{-1}$ ($668 \pm 65 \text{ ng g}_{\text{sed}}^{-1}$), by 300–400 km offshore the concentration was only $15 \pm 4 \mu\text{g g}_{\text{SOC}}^{-1}$ ($129 \pm 31 \text{ ng g}_{\text{sed}}^{-1}$), and 700–800 km offshore the average was $1.3 \pm 1.0 \mu\text{g g}_{\text{SOC}}^{-1}$ ($13 \pm 11 \text{ ng g}_{\text{sed}}^{-1}$; Tables 1 and S2). Tesi et al. (2014) found similarly rapid decreases in the concentration of lignin phenols and cutin acids along the same sample transect. The brGDGT concentration per gram sediment had a power-law reduction ($y = ax^b$) with an exponent of $b = -0.92$ and an r^2 value of 0.52. In a similar analysis, Zhu et al. (2013) found power-law relationships between water depth and concentration for GDGTs and other biomarkers in the East China Sea. Given that the bathymetry of the ESAS is very flat, the equivalent in this case is to plot against distance offshore. Our results show that rapid offshore decreases in brGDGT concentrations are not an isolated observation. This sharp decrease in brGDGT concentration could be due to either a rapid sedimentation of brGDGT-rich material close to the shoreline, or the remineralization of GDGT compounds during transport to the more distal locations.

Crenarchaeol ranged from 2.05 to $656 \mu\text{g g}_{\text{SOC}}^{-1}$ (24 to $8116 \text{ ng g}_{\text{sed}}^{-1}$) with the lowest values in the coastal areas and the highest crenarchaeol concentration at site YS-40, 391 km offshore from the Kolyma river outflow (Figs. 3b and S2b, location details in Table S2). Other regions of high crenarchaeol concentration were the area east of longitude 160° E , and north of the Lena Delta. The increase in crenarchaeol east of 160° E corresponds to the “Eastern ESS” region defined by Semiletov et al. (2005), and sug-

BGD

12, 637–674, 2015

GDGT distributions on the East Siberian Shelf

R. B. Sparkes et al.

Title Page

Abstract

Introduction

Conclusions

References

Tables

Figures

◀

▶

◀

▶

Back

Close

Full Screen / Esc

Printer-friendly Version

Interactive Discussion



gests a region more affected by marine processes than the remainder of the ESAS. The most distal sediments showed a reduction in Cren concentration, with mean values of $\sim 197 \mu\text{g g}_{\text{SOC}}^{-1}$ ($970 \text{ ng g}_{\text{sed}}^{-1}$) among the samples collected at the edge of the shelf. Crenarchaeol trends offshore were also non-linear, with the concentration peaking 300–400 km from the river mouths (average concentration $358 \pm 65 \mu\text{g g}_{\text{SOC}}^{-1}$, $3600 \pm 1200 \text{ ng g}_{\text{sed}}^{-1}$). Nearshore and far offshore the average values were much lower (0–100 km: $38 \pm 8 \mu\text{g g}_{\text{SOC}}^{-1}$, $480 \pm 50 \text{ ng g}_{\text{sed}}^{-1}$, 700–800 km: $95 \pm 73 \mu\text{g g}_{\text{SOC}}^{-1}$, $970 \pm 774 \text{ ng g}_{\text{sed}}^{-1}$ – see Table 1). A similar pattern in marine production has been observed in other transects of the Arctic coast, such as offshore northern Alaska (Belicka and Harvey, 2009) and may be due to a combination of (local) factors. Close to the shore the presence of fast ice for most of the year could reduce primary productivity, whilst far offshore the ice cap may have the same effect (Sakshaug and Slagstad, 1992; Cremer, 1999; Xiao et al., 2013). Measurements in the Laptev Sea of dinosterol and brassicasterol, biomarkers for open-water phytoplankton (Xiao et al., 2013), showed a similar pattern, although the maximum concentrations of these biomarkers were 76–79° N, further offshore than the Cren peak. The authors suggested that maximum primary productivity is in the open water and polynyas between the terrestrially-bound fast ice and the permanent open ocean ice sheet. Onshore, in Yedoma samples, total brGDGT concentrations were $129 \text{ ng g}_{\text{sed}}^{-1}$ and Cren concentrations $124 \text{ ng g}_{\text{sed}}^{-1}$. These values are very low compared to the ESAS samples, especially the brGDGT concentration compared to samples collected in the Buor-Khaya Bay or close to river outflows (Fig. S2). Peterse et al. (2014) report comparable results: brGDGT concentrations of $77 \pm 50 \text{ ng g}_{\text{sed}}^{-1}$, Cren concentrations of $16 \pm 11 \text{ ng g}_{\text{sed}}^{-1}$ and BIT values of 0.83 ± 0.02 . These results both suggest that erosion of Yedoma is unlikely to be the main source of brGDGTs or Cren to the ESAS.

GDGT distributions on the East Siberian Shelf

R. B. Sparkes et al.

Title Page

Abstract

Introduction

Conclusions

References

Tables

Figures

◀

▶

◀

▶

Back

Close

Full Screen / Esc

Printer-friendly Version

Interactive Discussion



3.2 Spatial GDGT distributions and BIT

BrGDGTs and crenarchaeol had very different concentration relationships across the shelf (Figs. 2a and b and 3). Plotting crenarchaeol concentration against brGDGT concentration shows that all nearshore samples are grouped together, having low Cren concentrations, whilst all offshore ESAS samples are in a distinct group with high Cren and low brGDGT concentrations (Fig. 4). The existence of these two groups is visible in the BIT index – Fig. 2c shows a map of BIT index across the ESAS. BIT was highest in the Buor-Khaya bay, especially close to the Lena River outflows (Fig. 2c). The stations closest to the Lena, TB-30, 40, 46, 47 and 48, had an average BIT value of 0.91, compared to the bay as a whole which averaged 0.58 (Table S2). Given a terrestrial BIT value of 1 (Hopmans et al., 2004), this strongly suggests a terrestrial source of the sediment deposited here, and a fluvial source to the brGDGTs (De Jonge et al., 2014; Peterse et al., 2014), and is similar to patterns seen in other locations (Doğrul Selver et al., 2012; Zhu et al., 2013). The BIT index values averaged 0.58 ± 0.03 in the 100 km closest to all river outflows, dropping to 0.04 ± 0.01 when 300–400 km offshore. A strong relationship is observed when the BIT index is plotted against the distance from the outflows of major rivers (Fig. 5a). The BIT index decreased rapidly in the first 150 km offshore before reducing more slowly across the ESAS. This was seen for the Lena, Indigirka and Kolyma offshore regions, as well as the open shelf. Ho et al. (2014) report BIT values from the Laptev Sea that show similar trends, reducing quickly offshore. However, their results are not quantitatively comparable to this study since a correction factor (Schouten et al., 2013) was not applied during analysis. In contrast, the rapidly decreasing pattern was not seen in the Dmitry Laptev Strait. Although the DLS is influenced by freshwater from the Lena River (Semiletov et al., 2005, 2011; Shakhova and Semiletov, 2007), it is a long distance from any river outflows and yet has a relatively high BIT value of 0.55 ± 0.06 . Excluding data from the DLS, which will be discussed separately, there is a strong power-law correlation ($y = ax^b$) between BIT and distance from rivers, with a value for exponent b of -1.209 (Fig. 5a, $(r^2) = 0.85$ $p \leq 0.00001$). To

BGD

12, 637–674, 2015

GDGT distributions on the East Siberian Shelf

R. B. Sparkes et al.

Title Page

Abstract

Introduction

Conclusions

References

Tables

Figures

◀

▶

◀

▶

Back

Close

Full Screen / Esc

Printer-friendly Version

Interactive Discussion



test this further the BIT index of offshore regions from the Lena (Laptev Sea), Indigirka (East Siberian Sea < 160° E) and Kolyma (East Siberian Sea > 160° E) rivers were plotted against distance from river outflows in log-log space (Fig. 5b). The gradients of the associated trendlines correspond to the exponential value (b) of each transect.

The values for the Lena ($b = 0.903$) and Indigirka ($b = 0.953$) are comparable but the values for the Kolyma region seems substantially higher ($b = 1.302$), denoting a more rapid shift to a marine-dominated system. The offshore Kolyma region showed linear rather than power-law reductions in High/Low Molecular Weight n -alkanes (Vonk et al., 2010). Measurements of lignin phenols from the same region showed rapid offshore decline, but did not show the spatial variance in reduction rates (Tesi et al., 2014). The sediments from the most distal part of the Kolyma offshore region appear to have abnormally low BIT values compared to the nearshore sediments. These sediments are in a region that can potentially be influenced by inflow of Pacific Ocean water from the Bering Strait (Semiletov et al., 2005), where incoming nutrients could stimulate primary productivity, as indicated by the extremely high Cren values. The nearshore section of the Kolyma region gives a value ($b = 0.945$) comparable to the other two regions. The similarity of each region studied, each showing a power-law reduction in BIT with distance despite a spatial separation of 100s of km, suggests that the processes affecting brGDGT degradation and crenarchaeol production are similar across the whole ESAS. The absolute amounts of brGDGTs and crenarchaeol differ for each river (Figs. 2a and b and S3a), and each region has a different BIT value for a given distance offshore (Figs. 2c and 5b), yet the rate of reduction offshore is remarkably comparable.

The DLS is unusual for its relatively high BIT index compared to its location, over 200 km from a major river outflow. This area is a region of high coastal erosion and the outflow of the Lena and Yana rivers is channelled through the DLS – the eastward branch of the Lena River outflow determines the fresh water balance and thermal regime of the strait, but particulate matter is dominated by coastal erosion (Semiletov et al., 2005; Shakhova and Semiletov, 2007). Given that the BIT index appears to decrease based on the distance from fluvial outflows (Fig. 5a), and therefore brGDGTs

BGD

12, 637–674, 2015

GDGT distributions on the East Siberian Shelf

R. B. Sparkes et al.

Title Page

Abstract

Introduction

Conclusions

References

Tables

Figures

◀

▶

◀

▶

Back

Close

Full Screen / Esc

Printer-friendly Version

Interactive Discussion



GDGT distributions on the East Siberian Shelf

R. B. Sparkes et al.

Title Page

Abstract

Introduction

Conclusions

References

Tables

Figures

◀

▶

◀

▶

Back

Close

Full Screen / Esc

Printer-friendly Version

Interactive Discussion



are likely delivered by rivers, one possibility could be that either the Lena River outflow or minor rivers discharging into this area are providing the brGDGTs, giving an enhanced BIT index. However, Figs. 2a and S2a show that brGDGT concentrations in this area are not especially high, and that there is a decreasing trend going eastward from the Lena Delta. The crenarchaeol concentrations in this region are very low (Figs. 2b and S2b), and it is this that is driving the high BIT index in the area. The DLS may be poor in Cren due to sea-ice cover reducing primary productivity. Sakshaug and Slagstad (1992) found that later melting times for sea-ice cover reduced seasonal primary productivity. Retreating ice causes a plankton bloom and initiates the growing season in that area. Xiao et al. (2013) report that the boundary between sea ice and continentally-anchored fast ice forms open-water polynyas roughly equivalent to the peak Cren regions, and the fast ice then retreats throughout the summer. Summer sea ice concentrations are higher in the DLS than other coastal areas, which could lead to the extremely low Cren concentrations. Future changes in ice cover will likely lead to increased marine productivity in this region, and may therefore reduce BIT values (Arrigo et al., 2008). Alternatively, because the ESAS is characterized by very low transparency which limits euphotic layer thickness (Semiletov et al., 2007, 2013; Heim et al., 2014), increasing river discharge will further decrease transparency, affecting marine productivity, and may therefore increase BIT values in the future.

3.3 Stable carbon isotopes and BIT

Stable carbon isotope values ($\delta^{13}\text{C}_{\text{SOC}}$) can be used as a bulk proxy for marine vs. terrestrial influence on sediment organic carbon composition. Marine productivity produces material with a more positive $\delta^{13}\text{C}_{\text{SOC}}$ value compared to terrOC. $\delta^{13}\text{C}_{\text{SOC}}$ values of the surface sediments, sourced from Vonk et al. (2012) were analysed in combination with the GDGT results. $\delta^{13}\text{C}_{\text{SOC}}$ ranged from -21.2 to -27.5‰ , with most depleted values in the DLS, and most enriched values on the distal shelf, again showing a transition from terrestrial to marine dominance offshore. The Buor-Khaya Bay samples were also depleted, although less so than the DLS, and showed no signifi-

cant variation across the Bay, in contrast to the BIT values (Fig. 6). There was a linear relationship between $\delta^{13}\text{C}_{\text{SOC}}$ and distance offshore. For samples from the Indigirka and Kolyma regions, and across the offshore ESAS, the correlation was very strong ($r^2 = 0.90$). This is in contrast to the BIT index, which had a strongly non-linear relationship. The relationship between $\delta^{13}\text{C}_{\text{SOC}}$ and BIT was therefore also non-linear, albeit with a strong correlation between the two (Fig. 6). This was observed in the Kolyma River transect and attributed to the higher degradation rate of brGDGTs compared to other fractions of terrOC and/or a significantly higher Cren addition compared to addition of other marine compounds (Doğrul Selver et al., 2014). Here, for the first time, decoupled offshore trends in BIT and $\delta^{13}\text{C}_{\text{SOC}}$ were observed.

In the Buor-Khaya Bay, Dmitry Laptev Strait and within 150 km of the coastline, the $\delta^{13}\text{C}_{\text{SOC}}$ value was between -25 and -28% and showed no significant trend, whilst the BIT value dropped from 1 to 0.28 in an offshore direction. Greater than 150 km offshore, the BIT value decreases from 0.22 to 0, and the $\delta^{13}\text{C}_{\text{SOC}}$ value enriches from -26 to -21% , creating an inflection at $\delta^{13}\text{C}_{\text{SOC}} = -26\%$ and BIT = 0.25. Considering that both $\delta^{13}\text{C}_{\text{SOC}}$ and BIT are used as proxies to quantify the proportion of terrestrial and marine material in offshore sediments (Belicka and Harvey, 2009; Doğrul Selver et al., 2012, 2014; Karlsson et al., 2011; Semiletov et al., 2005; Smith et al., 2012; Zhu et al., 2011), this apparent disagreement, which has not been seen in studies elsewhere, may suggest that on the ESAS they are measuring different aspects of the terrestrial sediment export. Vonk et al. (2012) showed that the ice complexes that dominate the East Siberian coastline are at least as rich in organic carbon as topsoil, yet our analysis showed low concentrations of GDGTs (Table S2), confirming results from Peterse et al. (2014). Therefore, erosion of coastal ice complexes would affect the $\delta^{13}\text{C}_{\text{SOC}}$ value of the sediments without significantly changing BIT values. Thus BIT may be measuring input from GDGT-rich fluvial sources whilst $\delta^{13}\text{C}_{\text{SOC}}$ integrates both fluvial influx and coastal erosion. An alternate explanation is that the brGDGTs responsible for the BIT index were degrading at a different rate compared to the bulk terrestrial organic carbon signal (Zhu et al., 2013). If brGDGTs, which made up a small

BGD

12, 637–674, 2015

GDGT distributions on the East Siberian Shelf

R. B. Sparkes et al.

Title Page

Abstract

Introduction

Conclusions

References

Tables

Figures

◀

▶

◀

▶

Back

Close

Full Screen / Esc

Printer-friendly Version

Interactive Discussion



GDGT distributions on the East Siberian Shelf

R. B. Sparkes et al.

Title Page

Abstract

Introduction

Conclusions

References

Tables

Figures

◀

▶

◀

▶

Back

Close

Full Screen / Esc

Printer-friendly Version

Interactive Discussion



proportion of the OC load of the sampled sediments (averaging $30 \text{ mg g}_{\text{SOC}}^{-1}$), degraded more rapidly than bulk organic matter, which may contain large amounts of resistant molecules such as lignin phenols or plant wax lipids (Feng et al., 2013; Tesi et al., 2014), then the two proxies were likely to have a non-linear relationship. However, Tesi et al. (2014) showed rapid offshore reduction in the concentration of lignin phenols and cutin acids among the same samples, which would suggest that the BIT results are not unique, and may be representing at least a portion of the bulk OC signal. This finding raises suspicion about the usefulness of the BIT index as a proxy for the proportion of terrestrial carbon in a bulk sediment sample where coastal erosion plays a large part, but introduces the possibility of its use as a more specific proxy for fluvial input.

3.4 Modelling OC and GDGT delivery

To investigate the sources and offshore behaviour of GDGTs and OC on the ESAS further, a simple model was created to simulate the deposition and degradation of terrestrial and marine material (Fig. S3). Apart from $\delta^{13}\text{C}_{\text{SOC}}$, which has been shown to vary across the ESAS, single uniform values were applied across the entire ESAS rather than tuning the model to particular rivers or regions. A full description of the model is available in Appendix.

Our dataset, and other recent studies, have shown that fluvial systems in this region contain large amounts of brGDGTs and OC (De Jonge et al., 2014; Peterse et al., 2014). We modelled fluvial delivery of sediment, OC and GDGTs from GRARs as a series of point sources, using the same sediment delivery conditions, from which material spread across the ESAS in a radial pattern. This leads to concentrations decreasing across the shelf in a $1/\text{distance}$ pattern. The Siberian Arctic coastline experiences rapid coastal erosion, delivering large amounts of sediment and OC to the Arctic Ocean each year (Vonk et al., 2012). This process was modelled as a linear source of material stretching along the entire longitudinal range of this study, with a single value for OC

and GDGT concentrations and sediment delivery rate. The OC, GDGTs and sediment delivered by coastal erosion decreased proportional to the distance from the coastline. Cren production peaked in the mid-latitude samples as discussed previously (Fig. 3b). This feature was reproduced simply in the model, with low marine OC and Cren deposition close to the coastline and far offshore and a peak at 290 km offshore.

A degradation factor was applied to the model, to simulate oxidation of organic matter in the water column. In the absence of more detailed studies a simple rule was applied in which OC and biomarkers were degraded proportional to the distance travelled from source, and to have degraded completely by 800 km offshore. Initial conditions for sediment supply, OC concentration and $\delta^{13}\text{C}_{\text{SOC}}$ for both fluvial and coastal erosion were defined using values from previous studies (Gordeev, 2006; Vonk et al., 2012). GDGT concentrations were defined using a single representative value based on samples from this study but were not “tuned” to specific regions, in order to avoid circularity (see Table S3 for model parameters).

Applying the uniform parameters described above and applying simple processes, the model reproduced measured offshore distributions of brGDGTs, Cren, TOC, $\delta^{13}\text{C}_{\text{SOC}}$ and BIT (Fig. 7). Transects from the river outflows were successfully reproduced, and the low-Cren high-BIT behaviour of the Dmitry Laptev Strait was also qualitatively replicated. The model was then applied to the whole ESAS region included in this study, to avoid sampling bias. In the model, rivers delivered 13 % of the sediment to the ESAS, but 72 % of the brGDGTs, which supports the use of the BIT index as a proxy for fluvial rather than coastal sediment and terrOC delivery. OC supply to the shelf was 40 % fluvial, 44 % coastal and 16 % marine primary productivity. These findings are comparable to Vonk et al. (2012), although in their numerical model the role of coastal erosion was somewhat greater. Using the degradation functions provided above, the model predicts that 23 % of the exported terrOC was degraded between delivery and sampling (since this study only considers surface sediments, later diagenesis is ignored, but likely to be substantial Arndt et al., 2013). Using published sediment delivery estimates (Rachold et al., 2002; Gordeev, 2006) this degradation equates to

BGD

12, 637–674, 2015

GDGT distributions on the East Siberian Shelf

R. B. Sparkes et al.

Title Page

Abstract

Introduction

Conclusions

References

Tables

Figures



Back

Close

Full Screen / Esc

Printer-friendly Version

Interactive Discussion



0.7 Tgy⁻¹ across the whole shelf, whilst 2.79 Tgy⁻¹ is deposited. Of this deposition, 1.13 Tgy⁻¹ comes from fluvial erosion, 1.23 Tgy⁻¹ from coastal erosion of Yedoma and 0.43 Tgy⁻¹ from burial of marine primary productivity. These figures are comparable to the values published by Semiletov et al. (2011), who found 4 Tgy⁻¹ of terrOC delivered to the Laptev and East Siberian Seas, of which 0.38 Tgy⁻¹ was sourced from the Lena River. Vonk et al. (2012) produced higher estimates for terrOC delivery, 27 Tgy⁻¹ of which 7 Tgy⁻¹ is from fluvial sources and 20 Tgy⁻¹ from coastal erosion. These figures are higher than both our model and previous estimates due to the high sediment deposition rate measured on the ESAS by Vonk et al. (2012). Since their study suggests both a higher sedimentation rate and a proportionally greater influence of coastal erosion, further study of OC source and deposition rates is clearly needed in this complex environment.

3.5 Use of brGDGTs as a tracer for river-derived sediment

The patterns observed in the BIT and $\delta^{13}\text{C}_{\text{SOC}}$ proxies, and the modelling results, support suggestions that the BIT index may be used not as a proxy for bulk soil export, but for fluvial sediment delivery (De Jonge et al., 2014; Peterse et al., 2014). Observations of large-scale Yedoma erosion and mobilisation in this area (Sánchez-García et al., 2014) are not carried forward into GDGT measurements, despite being identified in isotopic analyses (Vonk et al., 2012). Both the power-law reduction in BIT in an offshore direction and the non-linear relationship between BIT and $\delta^{13}\text{C}_{\text{SOC}}$ can be explained by the interaction of three carbon pools. The model suggests that the majority of the brGDGTs are due to input of OC from rivers discharging to the East Siberian Sea, whilst BIT is less representative of coastal erosion. As a bulk proxy, $\delta^{13}\text{C}_{\text{SOC}}$ is measuring the integrated effect of coastal erosion of terrestrial material, fluvial input and marine productivity, and therefore follows a different trend. Thus near-outflow samples are river dominated, nearshore samples are coastal erosion dominated and offshore samples are marine-enriched. The west-east decrease in BIT values (Fig. 2c),

BGD

12, 637–674, 2015

GDGT distributions on the East Siberian Shelf

R. B. Sparkes et al.

Title Page

Abstract

Introduction

Conclusions

References

Tables

Figures

◀

▶

◀

▶

Back

Close

Full Screen / Esc

Printer-friendly Version

Interactive Discussion



while it may be influenced by inflow of water through the Bering Strait, may also be explained by a fluvial signal, since the easternmost rivers are both smaller will deliver lower amounts of brGDGTs during the spring freshet (Peterse et al., 2014).

4 Conclusions

In agreement with previous studies, GDGT analyses show that sediments on the ESAS are terrestrially dominated near to river outflows and in the Buor-Khaya Bay. The BIT index shows that there is a trend towards marine organic matter domination offshore. This transition is quite rapid, occurring within 150 km of the shoreline following a power-law distribution in all three regions of the Laptev and East Siberian Seas. There is a non-linear relationship between the BIT index and $\delta^{13}\text{C}_{\text{SOC}}$ measurements, which show a more gradual transition to marine compositions, indicating that offshore transport of material in this region is a complex process. The fluvial and coastal erosion patterns can be reproduced using a simple model that confirms suggestions that brGDGTs are primarily delivered by rivers. Fluvial delivery of brGDGTs and topsoil, coupled with coastal erosion of Yedoma permafrost can explain the patterns seen on the shelf and supports the use of brGDGTs as a proxy for fluvially-delivered material in these sedimentary settings.

Appendix: A model of offshore OC and GDGT delivery

The model considers the export of GDGT biomarker molecules and organic carbon (OC) across the entire area of the ESAS included in this study. It is a simplified model in which a small number of processes and parameters are able to replicate the observed patterns across the ESAS. The model considers the delivery of sediment from both rivers and coastal erosion, and the organic carbon and GDGTs associated with this material. Combining this with marine primary productivity we can model the delivery of sediment, terrestrial organic carbon and marine carbon to each position on the

BGD

12, 637–674, 2015

GDGT distributions on the East Siberian Shelf

R. B. Sparkes et al.

Title Page

Abstract

Introduction

Conclusions

References

Tables

Figures

◀

▶

◀

▶

Back

Close

Full Screen / Esc

Printer-friendly Version

Interactive Discussion



ESAS, and calculate the BIT index and $\delta^{13}\text{C}_{\text{SOC}}$ values that would be generated by that delivery.

Rivers are point sources of sediment, OC and biomarkers, distributed along the ESAS coastline. Measurements in this study showed that brGDGT concentrations were highest at the mouths of GRARs. From the river mouth, material was modelled as spreading out in a 1/distance radial pattern, such that sediment, OC and GDGTs from fluvial sources were primarily deposited close to the river mouth, and concentrations dropped rapidly offshore. For simplicity, ocean currents were ignored, both surface and deep. Since GRAR outflow points are distributed 100s of km apart along the shoreline, the effects of interactions between river inputs was ignored – each position on the ESAS was modelled as only being affected by the closest river.

Measurements of the Kolyma River and associated lakes (Peterse et al., 2014), as well as the Yenisey River (De Jonge et al., 2014) and nearshore marine sediments from this study showed that brGDGTs were abundant in fluvial sediment. BIT values of 0.99 to 1 (Kolyma River, Peterse et al., 2014) and 0.95 to 1 (Yenisey River, De Jonge et al., 2014) showed that there was very little crenarchaeol. OC and GDGT concentrations in fluvial material were parameterized using samples from this study collected closest to the river mouths. Single values for fluvial sediment output, OC and GDGT concentrations were applied to all rivers. $\delta^{13}\text{C}_{\text{SOC}}$ values were set at -28.1‰ in the Laptev Sea and -26.3‰ in the ESS (Vonk et al., 2012).

Coastal erosion is a major source of sediment and to the ESAS, and is prevalent along a majority of the East Siberian Arctic coastline (Rachold et al., 2002; Vonk et al., 2012). The delivery of sediment, OC and GDGTs from coastal erosion was modelled as a linear source, assuming that all sections of the coastline were acting as a source of material. This leads to sediment, OC and GDGT deposition rates decreasing proportional to the distance from source, in a linear fashion. OC and GDGT input from coastal erosion was parameterized from measurements in this study and published data (Gordeev, 2006; Vonk et al., 2012). Measurements from two vertical Yedoma permafrost transects showed that GDGT concentrations were low throughout,

BGD

12, 637–674, 2015

GDGT distributions on the East Siberian Shelf

R. B. Sparkes et al.

Title Page

Abstract

Introduction

Conclusions

References

Tables

Figures



Back

Close

Full Screen / Esc

Printer-friendly Version

Interactive Discussion



so the coastal erosion sediment was a minor source of GDGTs to the ESAS. OC concentrations in the Yedomas samples was similar to fluvial sediments. Coastal-sourced sediment was given a $\delta^{13}\text{C}_{\text{SOC}}$ signature matching the source area, -27.1‰ in the Laptev Sea and -26.0‰ in the ESS.

Degradation during transport is an important consideration for terrestrial OC and GDGTs, however it is currently very poorly understood and could only be parameterized as a simplified process. Since transport exposes OC and GDGTs to oxygenated water, degradation of both terrestrial OC and GDGTs was modelled as a function of the distance travelled from source. The model used a linear relationship between distance travelled and proportion degraded, such that by a given distance offshore (defined as 800 km) all of the material was modelled as having been degraded. Obviously this is a simplification, since there are some recalcitrant fractions of OC that would certainly survive transport across the whole shelf – graphite particles have been observed far across the ESAS using the Raman Spectroscopy technique of Sparkes et al. (2013) – but in the absence of a comprehensive degradation study in this region it is not possible to include a more thorough model.

In the model, marine primary productivity produces both marine OC and crenarchaeol. Low-level production of brGDGTs in marine settings (Peterse et al., 2009) was treated as insignificant and ignored. Observations of crenarchaeol distribution in the ESAS sediments (Fig. 3b), and of marine biomarkers in this region (Xiao et al., 2013), showed that productivity was maximum at intermediate distances across the shelf ($76\text{--}79^\circ\text{N}$), and reduced close to the shore and far offshore. These areas exhibit winter sea-ice cover for longer amounts of the year, which will reduce primary productivity, whilst the region between the polar ice cap and the terrestrially-bound fast ice contains open-water polynyas (Xiao et al., 2013). A parabolic distribution was used to model the production of crenarchaeol. This varied from $4.2\text{ mg m}^{-2}\text{ y}^{-1}$ at 0 km via $17\text{ mg m}^{-2}\text{ y}^{-1}$ at 290 km to zero productivity at 625 km. However, there is very poor correlation between crenarchaeol concentrations and $\delta^{13}\text{C}_{\text{SOC}}$ across the shelf ($r^2 = 0.23$; compare Figs. 3b and S2d). This suggests that there are marine sources of OC unrelated to the

BGD

12, 637–674, 2015

GDGT distributions on the East Siberian Shelf

R. B. Sparkes et al.

Title Page

Abstract

Introduction

Conclusions

References

Tables

Figures



Back

Close

Full Screen / Esc

Printer-friendly Version

Interactive Discussion



production of Cren. In the absence of more precise data, marine OC production was modelled as a uniform $0.4 \text{ g m}^{-2} \text{ y}^{-1}$. These model parameters are collated in Table S3.

Each point on the ESAS was evaluated using GIS software that measured the distance to the closest river mouth and the closest coastline. These were given the values D_{riv} and D_{coast} respectively. This allowed the delivery of sediment, OC and GDGTs to be modelled for each location. Fluvial OC and GDGTs are a function of $1/D_{\text{riv}}$. Yedoma OC and GDGTs are a function of D_{coast} , as are marine OC and crenarchaeol. Having modelled the delivery of sediment, OC and GDGTs for each position on the shelf, TOC, $\delta^{13}\text{C}_{\text{SOC}}$ and BIT values were calculated for comparison with measured data and application to the whole shelf carbon cycle.

**The Supplement related to this article is available online at
doi:10.5194/bgd-12-637-2015-supplement.**

Acknowledgements. Ö. Gustafsson, B. E. van Dongen, O. V. Dudarev, and I. P. Semiletov collected samples along with the crew of ISSS-08. B. E. van Dongen and H. M. Talbot designed the study, which was carried out by R. B. Sparkes and A. Doğrul Selver with assistance from J. Bischoff and R. B. Sparkes designed and created the model. R. B. Sparkes prepared the manuscript with contributions from all co-authors.

We gratefully acknowledge receipt of a NERC research grant (NE/I024798/1 and NE/I027967/1) to B. E. van Dongen and H. M. Talbot, a Ph.D. studentship to A. Doğrul Selver funded by the Ministry of National Education of Turkey, a research grant (p220/mega-grant 2013-220-04-157) from the Government of the Russian Federation to I. P. Semiletov and O. V. Dudarev, and financial support as an Academy Research Fellow to Ö. Gustafsson from the Swedish Royal Academy of Sciences through a grant from the Knut and Alice Wallenberg Foundation. We thank the crew and personnel of the R/V *Yakob Smirnitskiy* and all colleagues in the International Siberian Shelf Study (ISSS) Program for support, including sampling. We thank P. Lythgoe (University of Manchester) for invaluable assistance with LC-MS and T. Tesi for providing the Yedoma samples for the Kolyma catchment area. The ISSS program is supported by the Knut and Alice Wallenberg Foundation, the Far Eastern Branch of the Russian Academy of Sciences, the Swedish Research Council, the US National Oceanic and Atmospheric Administration, the Russian Foundation of Basic Research, the Swedish Polar Research Secretariat, the Nordic Council of Ministers and the US National Science Foundation.

BGD

12, 637–674, 2015

GDGT distributions on the East Siberian Shelf

R. B. Sparkes et al.

Title Page

Abstract

Introduction

Conclusions

References

Tables

Figures

◀

▶

◀

▶

Back

Close

Full Screen / Esc

Printer-friendly Version

Interactive Discussion



References

- Arndt, S., Jørgensen, B. B., LaRowe, D. E., Middelburg, J. J., Pancost, R. D., and Regnier, P.: Quantifying the degradation of organic matter in marine sediments: a review and synthesis, *Earth-Sci. Rev.*, 123, 53–86, 2013. 640, 653
- 5 Arrigo, K. R., van Dijken, G., and Pabi, S.: Impact of a shrinking Arctic ice cover on marine primary production, *Geophys. Res. Lett.*, 35, L19603, doi:10.1029/2008GL035028, 2008. 650
- Belicka, L. L. and Harvey, H. R.: The sequestration of terrestrial organic carbon in Arctic Ocean sediments: a comparison of methods and implications for regional carbon budgets, *Geochim. Cosmochim. Ac.*, 73, 6231–6248, doi:10.1016/j.gca.2009.07.020, 2009. 647, 651
- 10 Blaga, C., Reichart, G.-J., Heiri, O., and Sinninghe Damsté, J. S.: Tetraether membrane lipid distributions in water-column particulate matter and sediments: a study of 47 European lakes along a north–south transect, *J. Paleolimnol.*, 41, 523–540, 2009. 641
- Cooke, M. P., Talbot, H. M., and Wagner, T.: Tracking soil organic carbon transport to continental margin sediments using soil-specific hopanoid biomarkers: a case study from the Congo fan (ODP site 1075), *Org. Geochem.*, 39, 965–971, doi:10.1016/j.orggeochem.2008.03.009, 2008. 640
- 15 Cremer, H.: Distribution patterns of diatom surface sediment assemblages in the Laptev Sea (Arctic Ocean), *Mar. Micropaleontol.*, 38, 39–67, 1999. 647
- 20 De Jonge, C., Stadnitskaia, A., Hopmans, E. C., Cherkashov, G., Fedotov, A., and Sinninghe Damsté, J. S.: In situ produced branched glycerol dialkyl glycerol tetraethers in suspended particulate matter from the Yenisei River, Eastern Siberia, *Geochim. Cosmochim. Ac.*, 125, 476–491, 2014. 641, 643, 645, 648, 652, 654, 656
- Doğrul Selver, A., Talbot, H. M., Gustafsson, O., Boulton, S., and van Dongen, B. E.: Soil organic matter transport along an sub-Arctic river–sea transect, *Org. Geochem.*, 51, 63–72, 2012. 641, 648, 651
- 25 Doğrul Selver, A., Sparkes, R. B., Bischoff, J., Talbot, H. M., Gustafsson, O., Semiletov, I. P., Dudarev, O. V., Boulton, S., and van Dongen, B. E.: Distributions of bacterial and archaeal membrane lipids in surface sediments along the Kolyma Palaeoriver transect, East Siberian Sea, *Org. Geochem.*, in press. 651
- 30 Drenzek, N. J., Montluçon, D. B., Yunker, M. B., Macdonald, R. W., and Eglinton, T. I.: Constraints on the origin of sedimentary organic carbon in the Beaufort

BGD

12, 637–674, 2015

GDGT distributions on the East Siberian Shelf

R. B. Sparkes et al.

Title Page

Abstract

Introduction

Conclusions

References

Tables

Figures



Back

Close

Full Screen / Esc

Printer-friendly Version

Interactive Discussion



- Sea from coupled molecular ^{13}C and ^{14}C measurements, *Mar. Chem.*, 103, 146–162, doi:10.1016/j.marchem.2006.06.017, 2007. 640
- Feng, X., Vonk, J. E., van Dongen, B. E., Gustafsson, O., Semiletov, I. P., Dudarev, O. V., Wang, Z., Montluçon, D. B., Wacker, L., and Eglinton, T. I.: Differential mobilization of terrestrial carbon pools in Eurasian Arctic river basins, *P. Natl. Acad. Sci. USA*, 110, 35, 14168–14173, doi:10.1073/pnas.1307031110, 2013. 639, 640, 652
- Galy, V., France-Lanord, C., Beyssac, O., Faure, P., Kudrass, H., and Palhol, F.: Efficient organic carbon burial in the Bengal fan sustained by the Himalayan erosional system, *Nature*, 450, 407–410, 2007. 640
- Goñi, M. A., Yunker, M. B., Macdonald, R. W., and Eglinton, T. I.: The supply and preservation of ancient and modern components of organic carbon in the Canadian Beaufort Shelf of the Arctic Ocean, *Mar. Chem.*, 93, 53–73, doi:10.1016/j.marchem.2004.08.001, 2005. 640
- Gordeev, V. V.: Fluvial sediment flux to the Arctic Ocean, *Geomorphology*, 80, 94–104, 2006. 642, 646, 653, 656
- Guo, L., Semiletov, I., Gustafsson, O., Ingri, J., Andersson, P., Dudarev, O., and White, D.: Characterization of Siberian Arctic coastal sediments: implications for terrestrial organic carbon export, *Global Biogeochem. Cy.*, 18, GB1036, doi:10.1029/2003GB002087, 2004. 640
- Gustafsson, Ö., van Dongen, B. E., Vonk, J. E., Dudarev, O. V., and Semiletov, I. P.: Widespread release of old carbon across the Siberian Arctic echoed by its large rivers, *Biogeosciences*, 8, 1737–1743, doi:10.5194/bg-8-1737-2011, 2011. 639, 640
- Hedges, J. I., Keil, R. G., and Benner, R.: What happens to terrestrial organic matter in the ocean?, *Org. Geochem.*, 27, 195–212, doi:10.1016/S0146-6380(97)00066-1, 1997. 640
- Heim, B., Abramova, E., Doerffer, R., Günther, F., Hölemann, J., Kraberg, A., Lantuit, H., Loginova, A., Martynov, F., Overduin, P. P., and Wegner, C.: Ocean colour remote sensing in the southern Laptev Sea: evaluation and applications, *Biogeosciences*, 11, 4191–4210, doi:10.5194/bg-11-4191-2014, 2014. 650
- Ho, S. L., Mollenhauer, G., Fietz, S., Martínez-García, A., Lamy, F., Rueda, G., Schipper, K., Méheust, M., Rosell-Melé, A., Stein, R., and Tiedemann, R.: Appraisal of TEX₈₆ and TEX_{L86} thermometries in subpolar and polar regions, *Geochim. Cosmochim. Ac.*, 131, 213–226, 2014. 648
- Hopmans, E. C., Weijers, J. W. H., Schefuß, E., Herfort, L., Sinninghe Damsté, J. S., and Schouten, S.: A novel proxy for terrestrial organic matter in sediments based

BGD

12, 637–674, 2015

GDGT distributions
on the East Siberian
Shelf

R. B. Sparkes et al.

Title Page

Abstract

Introduction

Conclusions

References

Tables

Figures

◀

▶

◀

▶

Back

Close

Full Screen / Esc

Printer-friendly Version

Interactive Discussion



on branched and isoprenoid tetraether lipids, *Earth Planet. Sc. Lett.*, 224, 107–116, doi:10.1016/j.epsl.2004.05.012, 2004. 641, 644, 645, 648, 673

IPCC: Climate Change 2013: The Physical Science Basis, Contribution of Working Group I to the Fifth Assessment Report of the Intergovernmental Panel on Climate Change, Tech. rep., 2013. 639

Kao, S.-J., Hilton, R. G., Selvaraj, K., Dai, M., Zehetner, F., Huang, J.-C., Hsu, S.-C., Sparkes, R., Liu, J. T., Lee, T.-Y., Yang, J.-Y. T., Galy, A., Xu, X., and Hovius, N.: Preservation of terrestrial organic carbon in marine sediments offshore Taiwan: mountain building and atmospheric carbon dioxide sequestration, *Earth Surf. Dynam.*, 2, 127–139, doi:10.5194/esurf-2-127-2014, 2014. 640

Karlsson, E. S., Charkin, A., Dudarev, O., Semiletov, I., Vonk, J. E., Sánchez-García, L., Andersson, A., and Gustafsson, Ö.: Carbon isotopes and lipid biomarker investigation of sources, transport and degradation of terrestrial organic matter in the Buor-Khaya Bay, SE Laptev Sea, *Biogeosciences*, 8, 1865–1879, doi:10.5194/bg-8-1865-2011, 2011. 651

Kienast, F., Schirrmeister, L., Siegert, C., and Tarasov, P.: Palaeobotanical evidence for warm summers in the East Siberian Arctic during the last cold stage, *Quaternary Res.*, 63, 283–300, 2005. 643

Kim, J.-H., Schouten, S., Buscail, R., Ludwig, W., Bonnin, J., Sinninghe Damsté, J. S., and Bourrin, F.: Origin and distribution of terrestrial organic matter in the NW Mediterranean (Gulf of Lions): exploring the newly developed BIT index, *Geochem. Geophys. Geosy.*, 7, 11, Q11017, doi:10.1029/2006GC001306, 2006. 641

Kim, J.-H., Buscail, R., Fanget, A.-S., Eyrolle-Boyer, F., Bassetti, M.-A., Dorhout, D., Baas, M., Berné, S., and Damsté, J. S. S.: Impact of river channel shifts on tetraether lipids in the Rhône prodelta (NW Mediterranean): implication for the {BIT} index as an indicator of palaeoflood events, *Org. Geochem.*, 75, 99–108, doi:10.1016/j.orggeochem.2014.06.011, 2014. 641

Kotlyakov, V. and Khromova, T.: Maps of permafrost and ground ice, in: *Land Resources of Russia*, National Snow and Ice Data Center, Boulder, <http://nsidc.org/ggd600.html>, 2002.

McClymont, E. L., Ganeshram, R. S. S., Pichevin, L. E., Talbot, H., van Dongen, B., Thunell, R. C., Haywood, A. M., Singarayer, J. S., and Valdes, P. J.: Sea-surface temperature records of termination 1 in the Gulf of California: challenges for seasonal and inter-annual analogues of tropical Pacific climate change, *Paleoceanography*, 27, doi:10.1029/2011PA002226, 2012. 644

BGD

12, 637–674, 2015

GDGT distributions on the East Siberian Shelf

R. B. Sparkes et al.

Title Page

Abstract

Introduction

Conclusions

References

Tables

Figures



Back

Close

Full Screen / Esc

Printer-friendly Version

Interactive Discussion



GDGT distributions on the East Siberian Shelf

R. B. Sparkes et al.

Title Page

Abstract

Introduction

Conclusions

References

Tables

Figures



Back

Close

Full Screen / Esc

Printer-friendly Version

Interactive Discussion



Peterse, F., Kim, J.-H., Schouten, S., Kristensen, D. K., Koç, N., and Sinninghe Damsté, J. S.: Constraints on the application of the MBT/CBT palaeothermometer at high latitude environments (Svalbard, Norway), *Org. Geochem.*, 40, 692–699, doi:10.1016/j.orggeochem.2009.03.004, 2009. 657

5 Peterse, F., Vonk, J. E., Holmes, R. M., Giosan, L., Zimov, N., and Eglinton, T. I.: Branched glycerol dialkyl glycerol tetraethers in Arctic lake sediments: sources and implications for paleothermometry at high latitudes, *J. Geophys. Res.-Biogeol.*, 119, 1739–1754, 2014. 641, 647, 648, 651, 652, 654, 655, 656

10 Peterson, B. J., Holmes, R. M., McClelland, J. W., Vörösmarty, C. J., Lammers, R. B., Shiklomanov, A. I., Shiklomanov, I. A., and Rahmstorf, S.: Increasing river discharge to the Arctic Ocean, *Science*, 298, 2171–2173, doi:10.1126/science.1077445, 2002. 639

Rachold, V., Grigoriev, M. N., and Bauch, H. A.: An estimation of the sediment budget in the Laptev Sea during the last 5000 years, *Polarforschung*, 70, 151–157, 2002. 642, 653, 656

15 Sakshaug, E. and Slagstad, D.: Sea ice and wind: effects on primary productivity in the Barents Sea, *Atmos. Ocean*, 30, 579–591, doi:10.1080/07055900.1992.9649456, 1992. 647, 650

Sánchez-García, L., Vonk, J. E., Charkin, A. N., Kosmach, D., Dudarev, O. V., Semiletov, I. P., and Gustafsson, O.: Characterisation of three regimes of collapsing Arctic ice complex deposits on the SE Laptev Sea coast using biomarkers and dual carbon isotopes, *Permafrost Periglac.*, 25, 172–183, doi:10.1002/ppp.1815, 2014. 654

20 Savileva, N., Semiletov, I., Vasilevskaya, L., and Pugach, S.: A climate shift in seasonal values of meteorological and hydrological parameters for Northeastern Asia, *Prog. Oceanogr.*, 47, 279–297, doi:10.1016/S0079-6611(00)00039-2, 2000. 639

Schouten, S., Hopmans, E. C., Rosell-Melé, A., Pearson, A., Adam, P., Bauersachs, T., Bard, E., Bernasconi, S. M., Bianchi, T. S., Brocks, J. J., Carlson, L. T., Castañeda, I. S., Derenne, S., Doğrul Selver, A., Dutta, K., Eglinton, T., Fosse, C., Galy, V., Grice, K., Hinrichs, K.-U., Huang, Y., Hugué, A., Hugué, C., Hurley, S., Ingalls, A., Jia, G., Keely, B., Knappy, C., Kondo, M., Krishnan, S., Lincoln, S., Lipp, J., Mangelsdorf, K., Martínez-García, A., Ménot, G., Mets, A., Mollenhauer, G., Ohkouchi, N., Ossebaer, J., Pagani, M., Pancost, R. D., Pearson, E. J., Peterse, F., Reichart, G.-J., Schaeffer, P., Schmitt, G., Schwark, L., Shah, S. R., Smith, R. W., Smittenberg, R. H., Summons, R. E., Takano, Y., Talbot, H. M., Taylor, K. W. R., Tarozo, R., Uchida, M., van Dongen, B. E., Van Mooy, B. A. S., Wang, J., Warren, C., Weijers, J. W. H., Werne, J. P., Woltering, M., Xie, S., Yamamoto, M., Yang, H., Zhang, C. L., Zhang, Y., Zhao, M., and Sinninghe Damsté, J. S.: An interlaboratory

- study of TEX86 and BIT analysis of sediments, extracts, and standard mixtures, *Geochem. Geophys. Geos.*, 14, 5263–5285, 2013. 640, 641, 645, 648
- Semiletov, I. P.: The failure of the coastal permafrost as an important factor in biogeochemistry of the Arctic shelf waters, *transactions of Russia Academy of Sciences [Doklady]*, 369, 1140–1143, 1999a. 639, 640
- Semiletov, I. P.: Aquatic Sources and Sinks of CO₂ and CH₄ in the Polar Regions, *J. Atmos. Sci.*, 56, 286–306, doi:10.1175/1520-0469(1999)056<0286:ASASOC>2.0.CO;2, 1999b. 639, 640
- Semiletov, I. and Gustafsson, O.: East Siberian shelf study alleviates scarcity of observations, *eos, Transactions American Geophysical Union*, 90, 145–146, 2009. 643
- Semiletov, I., Savelieva, N., Weller, G., Pipko, I., Pugach, S., Gukov, A., and Vasilevskaya, L.: The dispersion of Siberian river flows into coastal waters: meteorological, hydrological and hydrochemical aspects, in: *The Freshwater Budget of the Arctic Ocean*, edited by: Lewis, E., Jones, E., Lemke, P., Prowse, T., and Wadhams, P., vol. 70 of NATO Science Series, Springer, the Netherlands, doi:10.1007/978-94-011-4132-1_15, 323–366, 2000. 639
- Semiletov, I., Dudarev, O., Luchin, V., Charkin, A., Shin, K.-H., and Tanaka, N.: The East Siberian Sea as a transition zone between Pacific-derived waters and Arctic shelf waters, *Geophys. Res. Lett.*, 32, L10614, doi:10.1029/2005GL022490, 2005. 640, 643, 646, 648, 649, 651
- Semiletov, I. P., Pipko, I. I., Repina, I., and Shakhova, N. E.: Carbonate chemistry dynamics and carbon dioxide fluxes across the atmosphere-ice-water interfaces in the Arctic Ocean: Pacific sector of the Arctic, *J. Marine Syst.*, 66, 204–226, 2007. 640, 650
- Semiletov, I. P., Pipko, I. I., Shakhova, N. E., Dudarev, O. V., Pugach, S. P., Charkin, A. N., McRoy, C. P., Kosmach, D., and Gustafsson, Ö.: Carbon transport by the Lena River from its headwaters to the Arctic Ocean, with emphasis on fluvial input of terrestrial particulate organic carbon vs. carbon transport by coastal erosion, *Biogeosciences*, 8, 2407–2426, doi:10.5194/bg-8-2407-2011, 2011. 639, 640, 648, 654
- Semiletov, I. P., Shakhova, N. E., Sergienko, V. I., Pipko, I. I., and Dudarev, O. V.: On carbon transport and fate in the East Siberian Arctic land-shelf-atmosphere system, *Environ. Res. Lett.*, 7, 015201, doi:10.1088/1748-9326/7/1/015201, 2012. 640
- Semiletov, I. P., Shakhova, N. E., Pipko, I. I., Pugach, S. P., Charkin, A. N., Dudarev, O. V., Kosmach, D. A., and Nishino, S.: Space–time dynamics of carbon and environmental parameters related to carbon dioxide emissions in the Buor-Khaya Bay and adjacent part of the Laptev Sea, *Biogeosciences*, 10, 5977–5996, doi:10.5194/bg-10-5977-2013, 2013. 639, 640, 650

GDGT distributions on the East Siberian Shelf

R. B. Sparkes et al.

Title Page

Abstract

Introduction

Conclusions

References

Tables

Figures



Back

Close

Full Screen / Esc

Printer-friendly Version

Interactive Discussion



- Shakhova, N. and Semiletov, I.: Methane release and coastal environment in the East Siberian Arctic shelf, *J. Marine Syst.*, 66, 227–243, doi:10.1016/j.jmarsys.2006.06.006, 5th International Symposium on Gas Transfer at Water Surfaces Selected papers from the 37th International Liege Colloquium on Ocean Dynamics 37th International Liege Colloquium on Ocean Dynamics, 2007. 648, 649
- Shakhova, N. E., Sergienko, V., and Semiletov, I. P.: The contribution of the East Siberian shelf to the modern methane cycle, *Her. Russ. Acad. Sci.*, 79, 237–246, doi:10.1134/S101933160903006X, 2009. 639
- Shakhova, N., Semiletov, I., Leifer, I., Salyuk, A., Rekant, P., and Kosmach, D.: Geochemical and geophysical evidence of methane release over the East Siberian Arctic Shelf, *J. Geophys. Res.-Oceans*, 115, C08007, doi:10.1029/2009JC005602, 2010a. 639
- Shakhova, N., Semiletov, I., Salyuk, A., Yusupov, V., Kosmach, D., and Gustafsson, O.: Extensive methane venting to the atmosphere from sediments of the East Siberian Arctic Shelf, *Science*, 327, 1246–1250, 2010b. 639
- Shakhova, N., Semiletov, I., Leifer, I., Sergienko, V., Salyuk, A., Kosmach, D., Chernykh, D., Stubbs, C., Nicolsky, D., Tumskey, V., and Gustafsson, O.: Ebullition and storm-induced methane release from the East Siberian Arctic Shelf, *Nature Geosci.*, 7, 64–70, doi:10.1038/ngeo2007, 2014. 639
- Sinninghe Damsté, J. S., Schouten, S., Hopmans, E. C., Van Duin, C. T., and Geenevasen, J. A. J.: Crenarchaeol: the characteristic core glycerol dibiphytanyl glycerol tetraether membrane lipid of cosmopolitan pelagic crenarchaeota, *J. Lipid Res.*, 43, 1641–1651, 2002. 640
- Sistla, S. A., Moore, J. C., Simpson, R. T., Gough, L., Shaver, G. R., and Schimel, J. P.: Long-term warming restructures Arctic tundra without changing net soil carbon storage, *Nature*, 497, 615–618, 2013. 639
- Smith, R. W., Bianchi, T. S., and Li, X.: A re-evaluation of the use of branched GDGTs as terrestrial biomarkers: implications for the BIT Index, *Geochim. Cosmochim. Ac.*, 80, 14–29, doi:10.1016/j.gca.2011.11.025, 2012. 651
- Soloviev, V. A., Ginzburg, G. D., Telepnev, E. V., and Mikhayluk, Y. N.: Cryothermia and Gas Hydrates in the Arctic Ocean (VNIIOkeangeolia), 1987. 639
- Sparkes, R., Hovius, N., Galy, A., Kumar, R. V., and Liu, J. T.: Automated analysis of carbon in powdered geological and environmental samples by Raman spectroscopy, *Appl. Spectrosc.*, 67, 779–788, <http://as.osa.org/abstract.cfm?URI=as-67-7-779>, 2013. 657

GDGT distributions on the East Siberian Shelf

R. B. Sparkes et al.

Title Page

Abstract

Introduction

Conclusions

References

Tables

Figures



Back

Close

Full Screen / Esc

Printer-friendly Version

Interactive Discussion



GDGT distributions on the East Siberian Shelf

R. B. Sparkes et al.

Title Page

Abstract

Introduction

Conclusions

References

Tables

Figures



Back

Close

Full Screen / Esc

Printer-friendly Version

Interactive Discussion



- Tarnocai, C., Canadell, J. G., Schuur, E. A. G., Kuhry, P., Mazhitova, G., and Zimov, S.: Soil organic carbon pools in the northern circumpolar permafrost region, *Global Biogeochem. Cy.*, 23, GB2023, doi:10.1029/2008GB003327, 2009. 639, 642
- Tesi, T., Semiletov, I., Hugelius, G., Dudarev, O., Kuhry, P., and Gustafsson, O.: Composition and fate of terrigenous organic matter along the Arctic land–ocean continuum in East Siberia: insights from biomarkers and carbon isotopes, *Geochim. Cosmochim. Ac.*, 133, 235–256, 2014. 640, 643, 646, 649, 652
- Tierney, J. E., Schouten, S., Pitcher, A., Hopmans, E. C., and Sinninghe Damsté, J. S.: Core and intact polar glycerol dialkyl glycerol tetraethers (GDGTs) in Sand Pond, Warwick, Rhode Island (USA): insights into the origin of lacustrine GDGTs, *Geochim. Cosmochim. Ac.*, 77, 561–581, doi:10.1016/j.gca.2011.10.018, 2012. 643
- van Dongen, B. E., Semiletov, I., Weijers, J. W. H., and Gustafsson, O.: Contrasting lipid biomarker composition of terrestrial organic matter exported from across the Eurasian Arctic by the five great Russian Arctic rivers, *Global Biogeochem. Cy.*, 22, GB1011, doi:10.1029/2007GB002974, 2008. 640
- van Everdingen, R.: Multi-language glossary of permafrost and related ground-ice terms, Tech. rep., National Snow and Ice Data Center, Boulder CO, 1998. 642
- Vonk, J. E., van Dongen, B. E., and Gustafsson, O.: Selective preservation of old organic carbon fluvially released from sub-Arctic soils, *Geophys. Res. Lett.*, 37, L11605, doi:10.1029/2010gl042909, 2010. 649
- Vonk, J. E., Sanchez-Garcia, L., van Dongen, B. E., Alling, V., Kosmach, D., Charkin, A., Semiletov, I. P., Dudarev, O. V., Shakhova, N., Roos, P., Eglinton, T. I., Andersson, A., and Gustafsson, O.: Activation of old carbon by erosion of coastal and subsea permafrost in Arctic Siberia, *Nature*, 489, 137–140, 2012. 639, 640, 642, 645, 650, 651, 652, 653, 654, 656, 667, 673, 674
- Weijers, J. W. H., Schouten, S., Spaargaren, O. C., and Sinninghe Damsté, J. S.: Occurrence and distribution of tetraether membrane lipids in soils: implications for the use of the TEX86 proxy and the BIT index, *Org. Geochem.*, 37, 1680–1693, 2006. 641, 643, 645
- Weijers, J. W. H., Schouten, S., van den Donker, J. C., Hopmans, E. C., and Sinninghe Damsté, J. S.: Environmental controls on bacterial tetraether membrane lipid distribution in soils, *Geochim. Cosmochim. Ac.*, 71, 703–713, doi:10.1016/j.gca.2006.10.003, 2007. 641

- Weijers, J. W. H., Bernhardt, B., Peterse, F., Werne, J. P., Dungait, J. A. J., Schouten, S., and Sinninghe Damsté, J. S.: Absence of seasonal patterns in MBT-CBT indices in mid-latitude soils, *Geochim. Cosmochim. Ac.*, 75, 3179–3190, 2011. 645
- Xiao, X., Fahl, K., and Stein, R.: Biomarker distributions in surface sediments from the Kara and Laptev seas (Arctic Ocean): indicators for organic-carbon sources and sea-ice coverage, *Quaternary Sci. Rev.*, 79, 40–52, 2013. 647, 650, 657
- Zell, C., Kim, J.-H., Abril, G., Sobrinho, R., Dorhout, D., Moreira-Turcq, P., and Sinninghe Damsté, J.: Impact of seasonal hydrological variation on the distributions of tetraether lipids along the Amazon River in the central Amazon basin: implications for the MBT/CBT paleothermometer and the BIT index, *Frontiers in Microbiology*, 4, doi:10.3389/fmicb.2013.00228, 2013. 645
- Zhu, C., Talbot, H. M., Wagner, T., Pan, J.-M., and Pancost, R. D.: Distribution of hopanoids along a land to sea transect: implications for microbial ecology and the use of hopanoids in environmental studies *Journal Limnol. Oceanogr.*, 56, 1850–1865, 2011. 641, 651
- Zhu, C., Wagner, T., Talbot, H. M., Weijers, J. W. H., Pan, J.-M., and Pancost, R. D.: Mechanistic controls on diverse fates of terrestrial organic components in the East China Sea, *Geochim. Cosmochim. Ac.*, 117, 129–143, 2013. 646, 648, 651
- Zimov, S. A., Schuur, E. A. G., and Chapin, F. S.: Permafrost and the Global Carbon Budget, *Science*, 312, 1612–1613, 2006. 639

BGD

12, 637–674, 2015

**GDGT distributions
on the East Siberian
Shelf**

R. B. Sparkes et al.

Title Page

Abstract

Introduction

Conclusions

References

Tables

Figures

◀

▶

◀

▶

Back

Close

Full Screen / Esc

Printer-friendly Version

Interactive Discussion



GDGT distributions
on the East Siberian
Shelf

R. B. Sparkes et al.

Table 1. Summed brGDGTs, Crenarchaeol concentrations, BIT, $\delta^{13}\text{C}_{\text{SOC}}$ and TOC values on the East Siberian Arctic Shelf, grouped by distance from river mouths.

Distance from rivers ¹ km	<i>n</i>	$\Sigma\text{brGDGTs}$ $\text{ng g}_{\text{sed}}^{-1}$	Crenarchaeol $\text{ng g}_{\text{sed}}^{-1}$	BIT	$\delta^{13}\text{C}_{\text{SOC}}$ ² ‰	TOC %
0–100	46	668	475	0.58	−26.05	1.81
100–200	13	227	781	0.32	−25.95	0.79
200–300	12	306	815	0.37	−26.55	0.96
300–400	5	129	3595	0.04	−24.60	0.94
400–500	5	136	2611	0.05	−24.60	0.91
500–600	3	84	2164	0.04	−23.70	0.78
600–700	6	62	1984	0.03	−22.88	0.83
700–800	2	13	971	0.01	−21.35	0.97

¹This distance was measured radially in km from a series of outflows shown in the NOAA GSHGG river dataset.²As reported in Vonk et al. (2012).

Title Page

Abstract

Introduction

Conclusions

References

Tables

Figures

◀

▶

◀

▶

Back

Close

Full Screen / Esc

Printer-friendly Version

Interactive Discussion



GDGT distributions on the East Siberian Shelf

R. B. Sparkes et al.

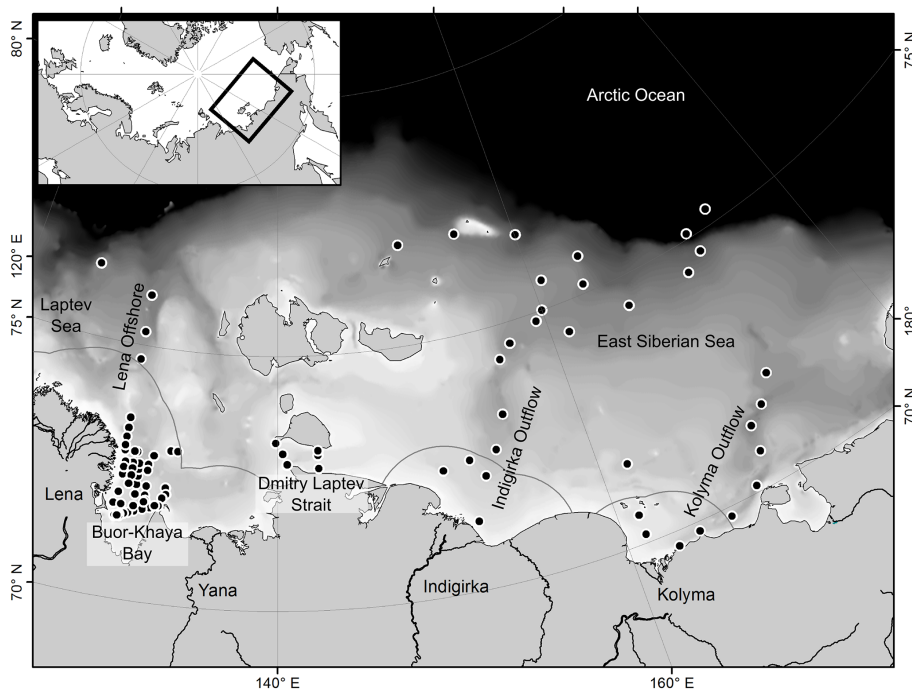


Figure 1. Map of the East Siberian Arctic Shelf (ESAS) showing the location of the ISSS-08 sampling stations. Key regions referred to in the text are highlighted. The lower courses and outflows of four Great Russian Arctic Rivers are labelled.

Title Page

Abstract

Introduction

Conclusions

References

Tables

Figures

◀

▶

◀

▶

Back

Close

Full Screen / Esc

Printer-friendly Version

Interactive Discussion



BGD

12, 637–674, 2015

GDGT distributions
on the East Siberian
Shelf

R. B. Sparkes et al.

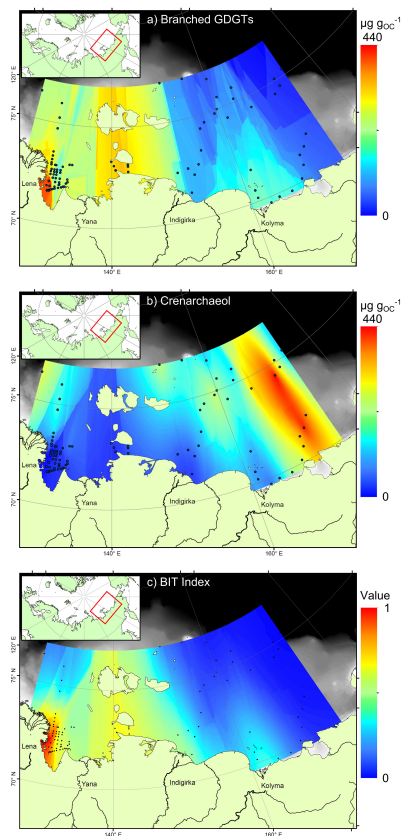


Figure 2. Maps of **(a)** Summed brGDGTs and **(b)** Crenarchaeol concentrations, and **(c)** the BIT index on the ESAS. Maps were interpolated using a kriging algorithm and the locations of ISSS-08 stations are shown with black dots.

Title Page

Abstract

Introduction

Conclusions

References

Tables

Figures

◀

▶

◀

▶

Back

Close

Full Screen / Esc

Printer-friendly Version

Interactive Discussion



GDGT distributions on the East Siberian Shelf

R. B. Sparkes et al.

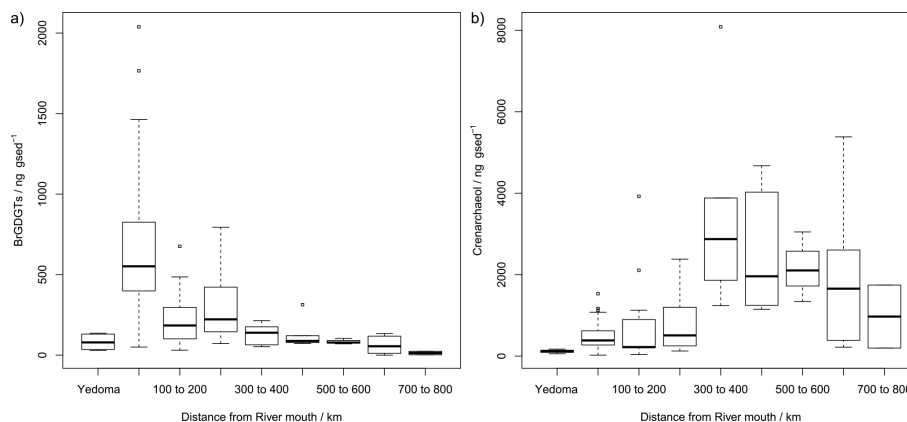


Figure 3. Boxplots summarising the concentrations of **(a)** brGDGTs and **(b)** Crenarchaeol on the ESAS, grouped by distance from river mouths. Concentrations in Yedoma samples are also shown. Thick lines show the median values, boxes the 25th and 75th percentiles, whiskers the maximum and minimum values within 1.5 times the inter-quartile range and square symbols outliers beyond this threshold.

[Title Page](#)
[Abstract](#)
[Introduction](#)
[Conclusions](#)
[References](#)
[Tables](#)
[Figures](#)

[Back](#)
[Close](#)
[Full Screen / Esc](#)
[Printer-friendly Version](#)
[Interactive Discussion](#)


GDGT distributions on the East Siberian Shelf

R. B. Sparkes et al.

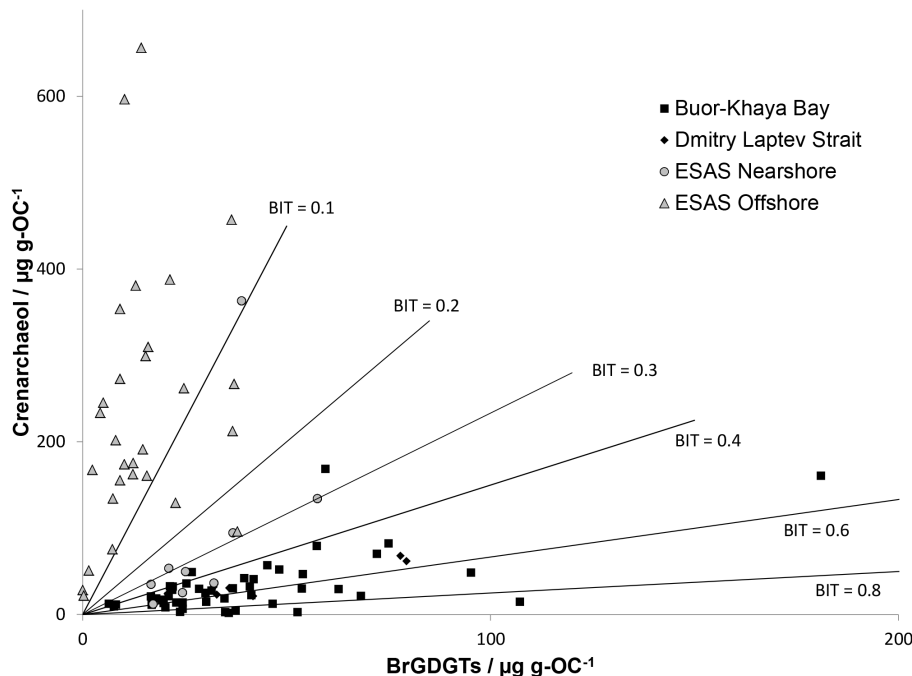


Figure 4. Plot of crenarchaeol vs. brGDGT concentration. Nearshore samples from the Buor-Khaya Bay, DLS and nearshore (< 150 km from river mouths) ESAS have low crenarchaeol concentrations. Offshore ESAS samples (> 150 km from river mouths) have high crenarchaeol concentrations. Labelled contours show the BIT index values.

[Title Page](#)
[Abstract](#)
[Introduction](#)
[Conclusions](#)
[References](#)
[Tables](#)
[Figures](#)

[Back](#)
[Close](#)
[Full Screen / Esc](#)
[Printer-friendly Version](#)
[Interactive Discussion](#)


GDGT distributions on the East Siberian Shelf

R. B. Sparkes et al.

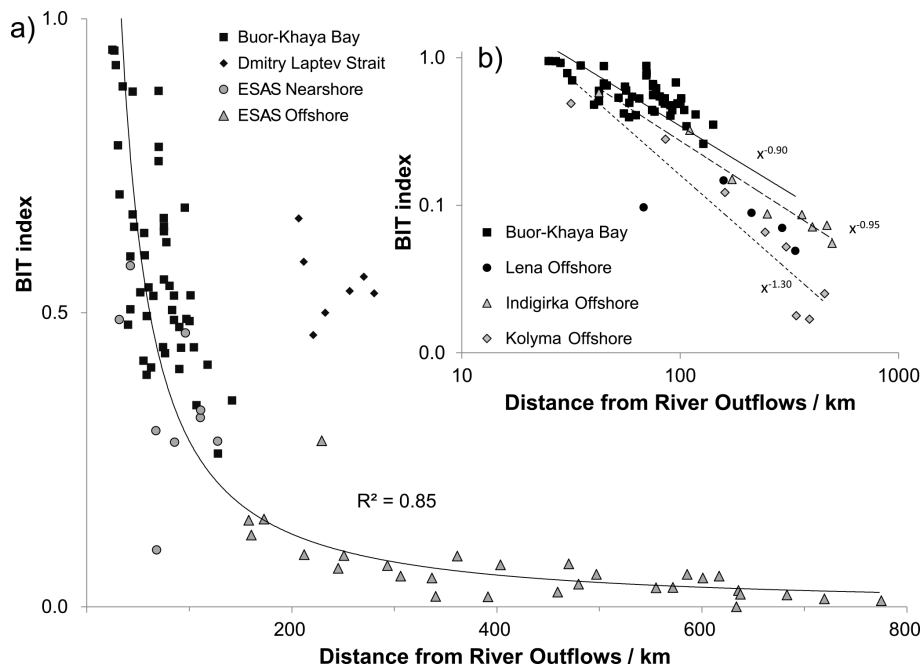


Figure 5. Plot of BIT index vs. linear distance from river mouths. **(a)** plotted in linear space, showing the strong power-law relationship between the BIT and distance (with the exception of the DLS samples) and **(b)** plotted in log-log space. Outflows from the Lena, Indigirka and Kolyma rivers are comparable, with power-law co-efficients labelled.

[Title Page](#)
[Abstract](#)
[Introduction](#)
[Conclusions](#)
[References](#)
[Tables](#)
[Figures](#)
[◀](#)
[▶](#)
[◀](#)
[▶](#)
[Back](#)
[Close](#)
[Full Screen / Esc](#)
[Printer-friendly Version](#)
[Interactive Discussion](#)

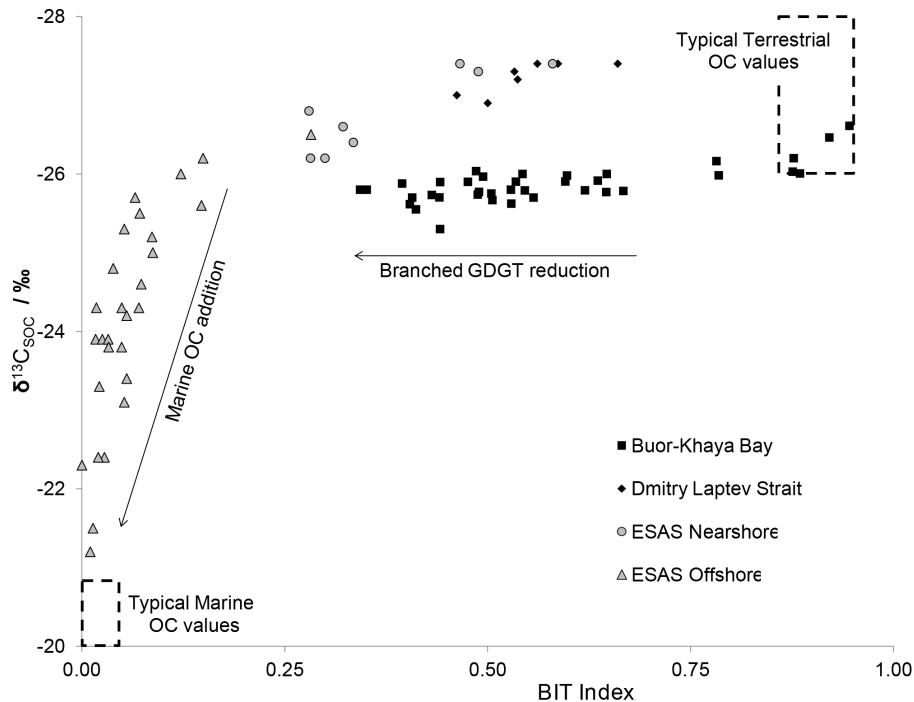



Figure 6. Plot of $\delta^{13}\text{C}_{\text{SOC}}$ vs. BIT index. Typical values for terrestrial and marine endmember samples are shown (Hopmans et al., 2004; Vonk et al., 2012). Note the non-linearity of the relationship, BIT index drops significantly before a shift in isotope ratio to more marine values.

GDGT distributions on the East Siberian Shelf

R. B. Sparkes et al.

Title Page

Abstract

Introduction

Conclusions

References

Tables

Figures

◀

▶

◀

▶

Back

Close

Full Screen / Esc

Printer-friendly Version

Interactive Discussion



BGD

12, 637–674, 2015

GDGT distributions
on the East Siberian
Shelf

R. B. Sparkes et al.

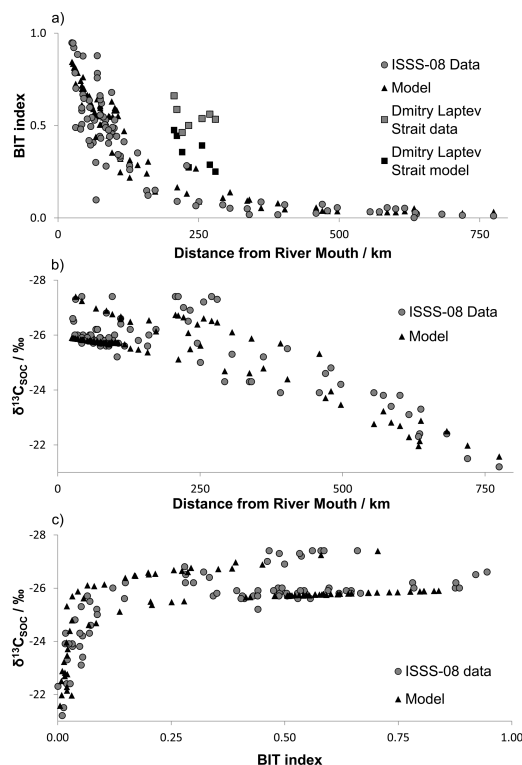


Figure 7. Comparison plots of sample parameters with modelled values. Empty symbols represent observed data from this study and Vonk et al. (2012), black symbols are modelled values. **(a)** BIT index vs. distance from river outflows. Samples from the DLS are shown separately, demonstrating how this region is offset from the general offshore-reduction trend in BIT, and showing the model recreating this trend. **(b)** $\delta^{13}\text{C}_{\text{SOC}}$ vs. distance from river outflow. **(c)** $\delta^{13}\text{C}_{\text{SOC}}$ vs. BIT index.

Title Page

Abstract

Introduction

Conclusions

References

Tables

Figures



Back

Close

Full Screen / Esc

Printer-friendly Version

Interactive Discussion

