

Supplement of Biogeosciences Discuss., 12, 7093–7124, 2015
<http://www.biogeosciences-discuss.net/12/7093/2015/>
doi:10.5194/bgd-12-7093-2015-supplement
© Author(s) 2015. CC Attribution 3.0 License.



Supplement of

Responses of leaf traits to climatic gradients: adaptive variation vs. compositional shifts

T.-T. Meng et al.

Correspondence to: H. Wang (angwanh@gmail.com)

The copyright of individual parts of the supplement might differ from the CC-BY 3.0 licence.

Supplement

Figure S1: Partial residual plots for the relationships between leaf traits and the Cramer-Prentice moisture index (α), from a GLM analysis with PFT identity included as a predictor. Each point represents a species-site combination; fitted lines for each PFT are indicated by colours.

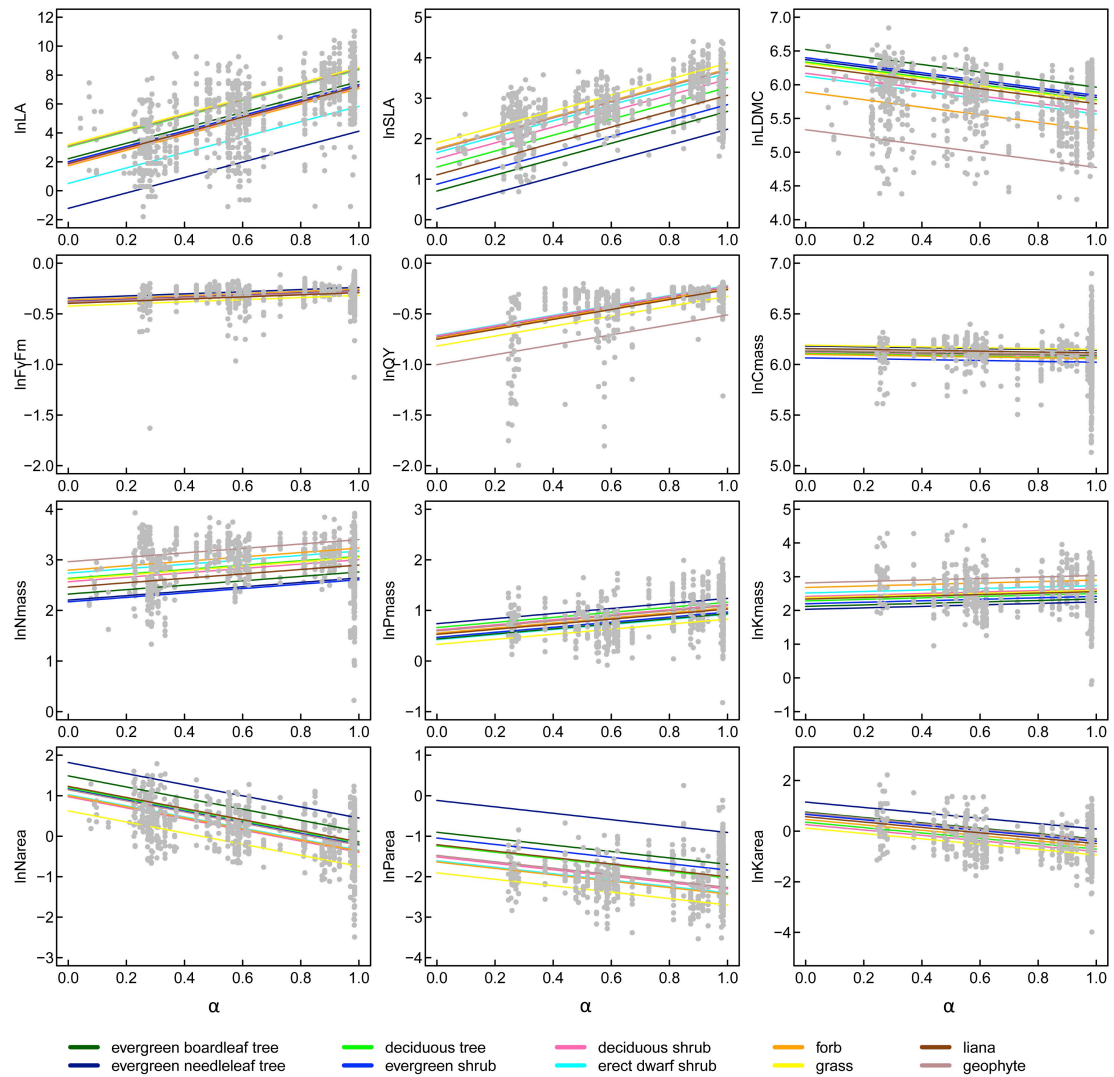


Figure S2: Partial residual plots for the relationships between leaf traits and the Cramer-Prentice moisture index (α), from a GLM analysis with PFT \times climate interactions included as predictors. Each point represents a species-site combination; fitted lines for each PFT are indicated by colours. Only significant PFT \times climate interactions ($P < 0.01$) are shown.

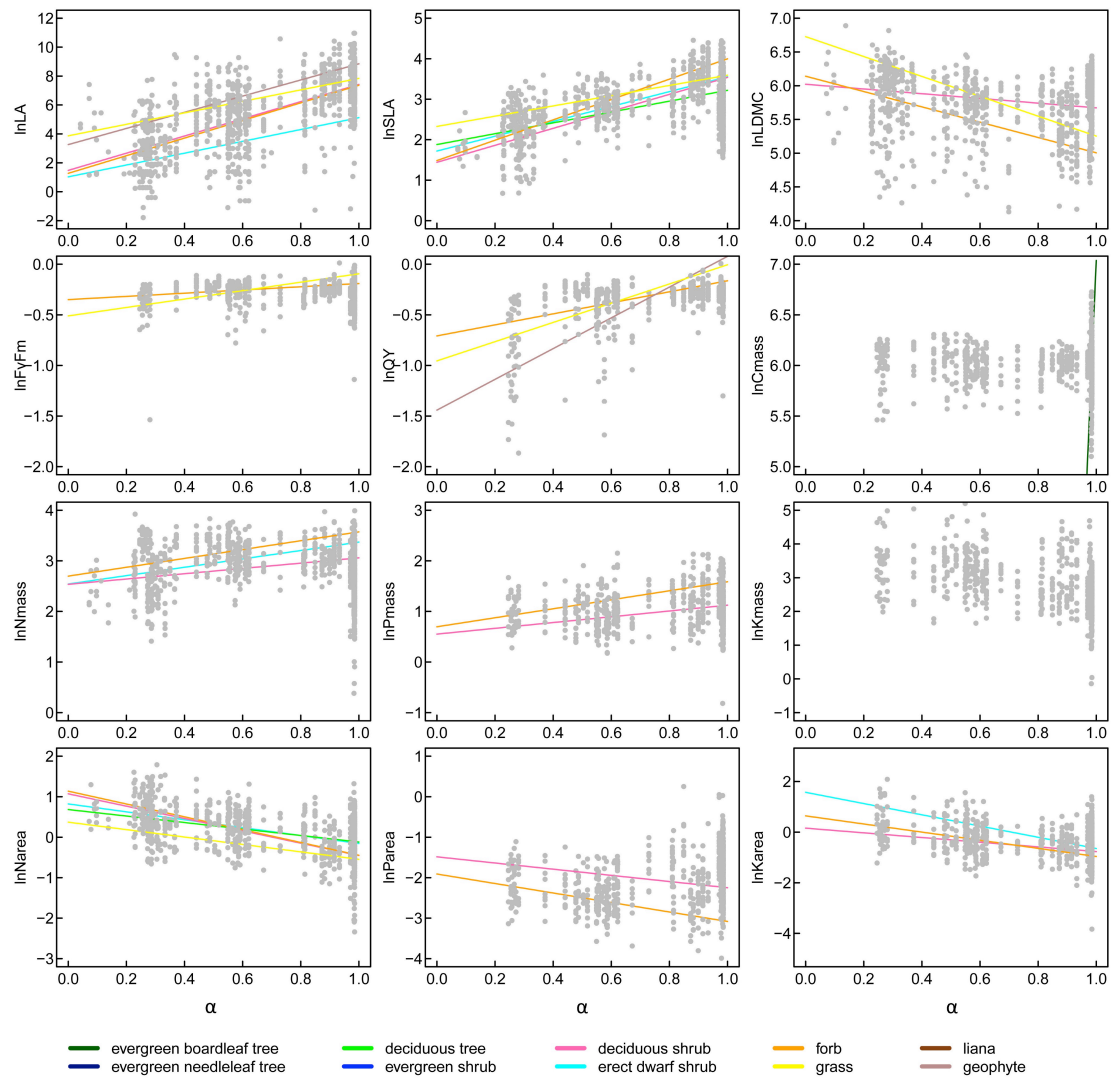


Figure S3: Partial residual plots for the relationships between leaf traits and growing degree days (GDD_0), from a GLM analysis with PFT identity included as a predictor. Each point represents a species-site combination; fitted lines for each PFT are indicated by colours.

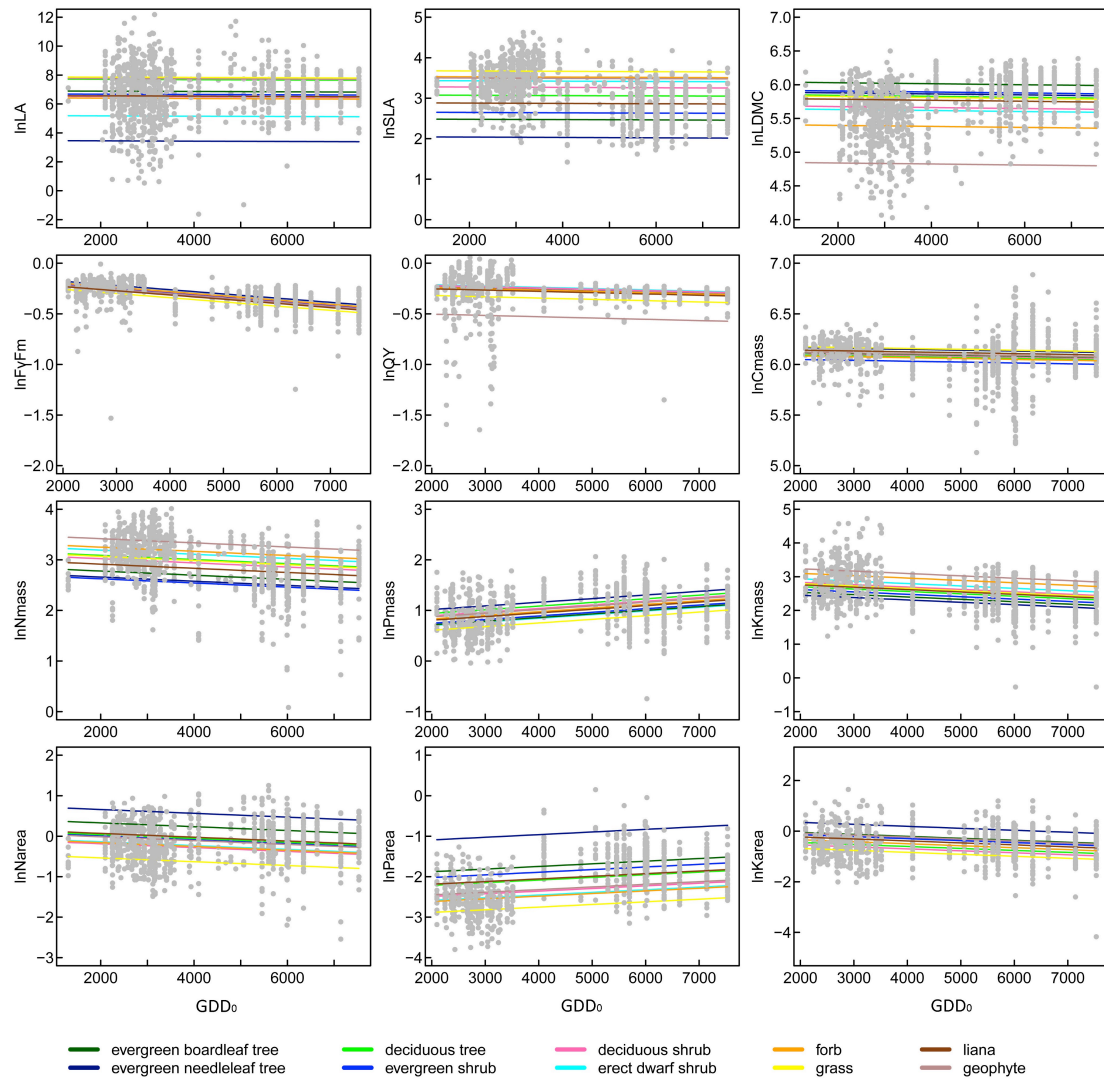


Figure S4: Partial residual plots for the relationships between leaf traits and growing degree days (GDD_0), from a GLM analysis with PFT \times climate interactions included as predictors. Each point represents a species-site combination; fitted lines for each PFT are indicated by colours. Only significant PFT \times climate interactions ($P < 0.01$) are shown.

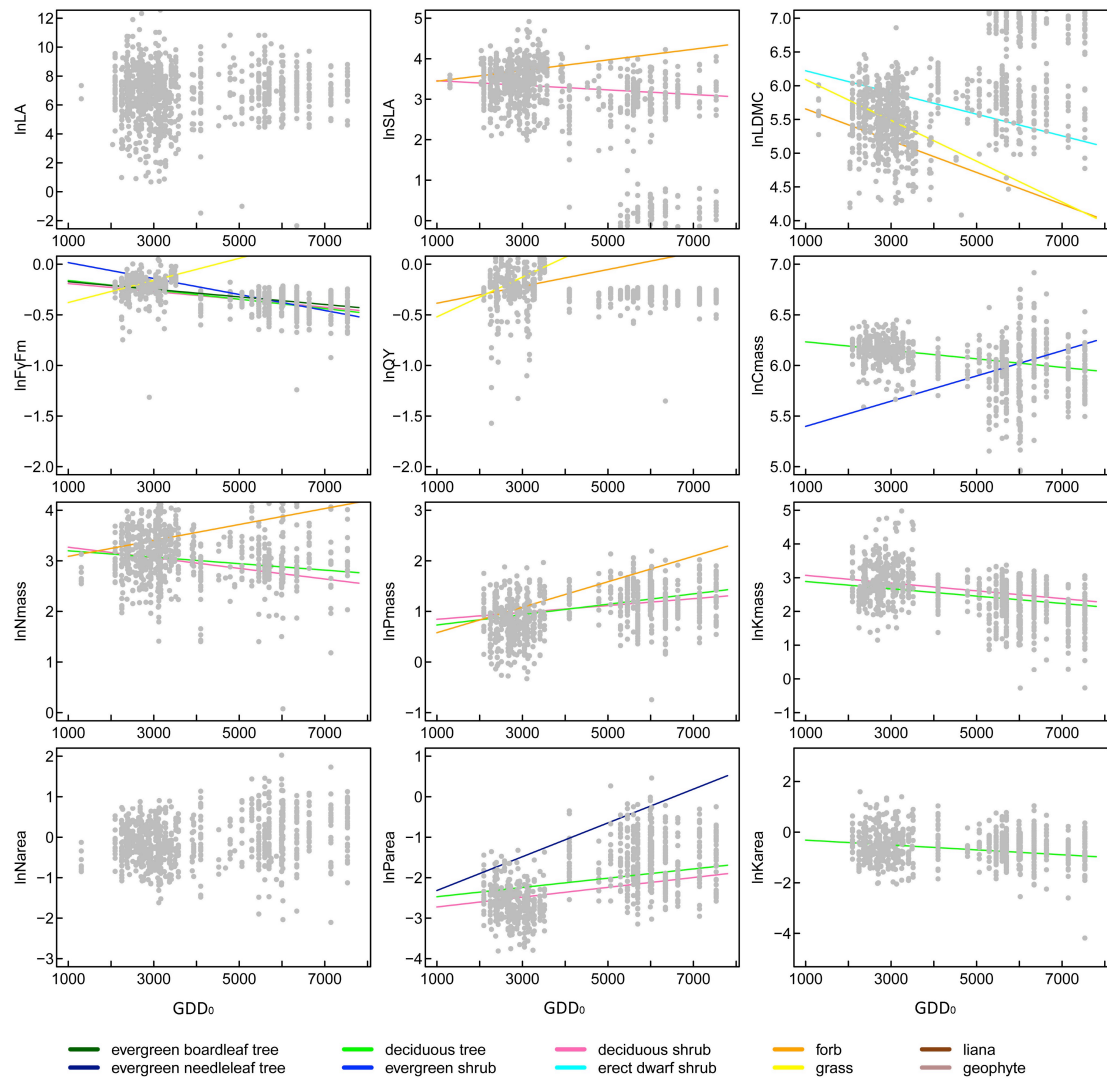


Table S1. Species sampled at each site.

Species	Sampling sites
<i>Abelia biflora</i>	NSTEC14
<i>Acanthopanax senticosus</i>	NECT05, NECT06, NECT09
<i>Acanthopanax trifoliatum</i>	NSTEC12
<i>Acer buergerianum</i>	NSTEC03, NSTEC13
<i>Acer cinnamomifolium</i>	NSTEC11
<i>Acer cordatum</i>	NSTEC06
<i>Acer ginnala</i>	NECT05, NECT06
<i>Acer mandschuricum</i>	NECT09
<i>Acer mono</i>	NECT03, NECT06, NECT08, NECT09, NSTEC14
<i>Acer tegmentosum</i>	NECT09
<i>Achnatherum sibiricum</i>	NECT23, NECT26
<i>Acmena acuminatissima</i>	NSTEC09
<i>Aconitum jaluense</i> var. <i>paniculigerum</i>	NECT09
<i>Aconitum kirinense</i>	NECT08
<i>Aconitum volubile</i>	NECT06
<i>Acronychia pedunculata</i>	NSTEC09
<i>Actaea asiatica</i>	NECT08
<i>Actinidia arguta</i>	NECT09
<i>Actinidia eriantha</i>	NSTEC07
<i>Adenophora gmelinii</i>	NECT25
<i>Adenophora stenanthina</i> var. <i>crispata</i>	NECT25
<i>Adenophora tetraphylla</i>	NECT05, NECT06, NECT07
<i>Adiantum pedatum</i>	NECT09
<i>Adina pilulifera</i>	NSTEC06, NSTEC07
<i>Adinandra megaphylla</i>	NSTEC06
<i>Aegopodium alpestre</i>	NECT05, NECT06, NECT07, NECT09
<i>Agrimonia pilosa</i>	NECT05, NECT07
<i>Agropyron cristatum</i>	NECT02
<i>Agropyron michnoi</i>	NECT17, NECT19, NECT20, NECT21, NECT23, NECT24, NECT25, NECT26, NECT27, NECT28, NECT29, NECT31, NECT33
<i>Ajania achilloides</i>	NECT28
<i>Akebia trifoliata</i>	NSTEC12
<i>Alangium chinense</i>	NSTEC03
<i>Albizia kalkora</i>	NSTEC02, NSTEC10, NSTEC13
<i>Alchornea trewioides</i>	NSTEC10
<i>Allium bidentatum</i>	NECT29
<i>Allium condensatum</i>	NECT23, NECT26
<i>Allium leucocephalum</i>	NECT29
<i>Allium mongolicum</i>	NECT15, NECT18, NECT21, NECT23, NECT24, NECT25, NECT26, NECT27, NECT28
<i>Allium neriniflorum</i>	NECT20
<i>Allium polyrhizum</i>	NECT27
<i>Allium ramosum</i>	NECT10, NECT17, NECT22, NECT23, NECT24, NECT25, NECT26, NECT27, NECT28, NECT30, NECT31, NECT32, NECT33
<i>Allium senescens</i>	NECT01, NECT11
<i>Allium</i> sp.	NECT02, NECT13
<i>Allium tenuissimum</i>	NECT32
<i>Alyxia vulgaris</i>	NSTEC07, NSTEC08
<i>Amaranthus retroflexus</i>	NECT12
<i>Ampelopsis cantoniensis</i>	NSTEC06

<i>Ampelopsis grossedentata</i>	NSTEC07
<i>Anemarrhena asphodeloides</i>	NECT02
<i>Angelica amurensis</i>	NECT06
<i>Antidesma japonicum</i>	NSTEC06, NSTEC07, NSTEC12
<i>Aphananthe aspera</i>	NSTEC03
<i>Aporusa dioica</i>	NSTEC09
<i>Aralia chinensis</i>	NSTEC12
<i>Aralia elata</i>	NECT09
<i>Arctium lappa</i>	NECT06, NECT08
<i>Ardisia crenata</i> var. <i>bicolor</i>	NSTEC05
<i>Ardisia hanceana</i>	NSTEC09
<i>Ardisia hypargyrea</i>	NSTEC09
<i>Ardisia japonica</i>	NSTEC05
<i>Ardisia lindleyana</i>	NSTEC07, NSTEC08
<i>Ardisia punctata</i>	NSTEC09
<i>Arisaema heterophyllum</i>	NECT09
<i>Aristida adscensionis</i>	NECT14, NECT16, NECT30
<i>Arnebia guttata</i>	NECT18, NECT20
<i>Artemisia anethifolia</i>	NECT11
<i>Artemisia annua</i>	NECT17, NECT18
<i>Artemisia capillaris</i>	NSTEC13
<i>Artemisia frigida</i>	NECT01, NECT02, NECT15, NECT18, NECT20, NECT21, NECT22, NECT23, NECT24, NECT25, NECT26, NECT27, NECT28, NECT30
<i>Artemisia keiskeana</i>	NECT07
<i>Artemisia lavandulaefolia</i>	NECT10
<i>Artemisia mongolica</i>	NECT10, NECT17
<i>Artemisia pubescens</i>	NECT27
<i>Artemisia sacrorum</i>	NECT01, NECT02, NECT10, NECT15
<i>Artemisia sacrorum</i> var. <i>glauca</i>	NECT01, NECT02, NECT15
<i>Artemisia scoparia</i>	NECT02, NECT10, NECT11, NECT12, NECT14, NECT20, NECT21, NECT22
<i>Artemisia sieversiana</i>	NECT10
<i>Artemisia</i> sp.	NECT02, NECT04, NECT32
<i>Artemisia sylvatica</i>	NECT04
<i>Asparagus brachyphyllus</i>	NSTEC13
<i>Asparagus dauricus</i>	NECT04, NECT27, NECT28, NECT29, NECT30, NECT31, NECT32, NECT33
<i>Asparagus</i> sp.	NECT05, NECT08, NECT09
<i>Aster ageratoides</i>	NECT11
<i>Aster scaber</i>	NECT06, NECT07, NECT08
<i>Astilbe chinensis</i>	NECT03, NECT05, NECT06, NECT07, NECT08, NECT09
<i>Astragalus adsurgens</i>	NECT12, NECT21, NECT26
<i>Astragalus galactites</i>	NECT01, NECT02, NECT26
<i>Astragalus scaberrimus</i>	NECT01, NECT02, NECT26
<i>Astragalus</i> sp.	NECT30
<i>Astragalus variabilis</i>	NECT25
<i>Atractylodes japonica</i>	NECT07
<i>Atraphaxis bracteata</i>	NECT30
<i>Atraphaxis manshurica</i>	NECT18
<i>Atriplex gmelinii</i>	NECT13
<i>Bassia dasyphylla</i>	NECT19
<i>Bauhinia championii</i>	NSTEC10
<i>Belamcanda chinensis</i>	NECT18
<i>Betula albosinensis</i>	NECT05
<i>Betula platyphylla</i>	NECT05, NECT06
<i>Betula utilis</i>	NECT03, NECT07

<i>Blastus cochinchinensis</i>	NSTEC09
<i>Brachybotrys paridiformis</i>	NECT06, NECT09
<i>Bromus inermis</i>	NECT05
<i>Broussonetia papyrifera</i>	NSTEC01
<i>Bupleurum longiradiatum</i>	NECT07
<i>Bupleurum scorzonerifolium</i>	NECT23, NECT25, NECT26
<i>Cacalia hastata</i>	NECT05, NECT06, NECT08, NECT09
<i>Calamagrostis epigejos</i>	NECT04, NECT11
<i>Calamus hoplites</i>	NSTEC09
<i>Callicarpa rubella</i>	NSTEC06
<i>Camellia cordifolia</i>	NSTEC07
<i>Camellia fraterna</i>	NSTEC05, NSTEC06, NSTEC07
<i>Camellia furfuracea</i>	NSTEC11
<i>Camellia oleifera</i>	NSTEC05, NSTEC11, NSTEC12
<i>Camellia sinensis</i>	NSTEC06
<i>Campanula falcata</i>	NECT10
<i>Campanula glomerata</i>	NECT05
<i>Canarium album</i>	NSTEC09
<i>Caragana microphylla</i>	NECT02, NECT16, NECT19, NECT23, NECT24, NECT25, NECT27, NECT28, NECT29, NECT30, NECT31, NECT33
<i>Caragana stenophylla</i>	NECT26, NECT27, NECT28, NECT29, NECT30, NECT31, NECT33
<i>Caragana tibetica</i>	NECT30
<i>Cardamine macrophylla</i>	NECT09, NECT10
<i>Carex appendiculata</i>	NECT06
<i>Carex duriuscula</i>	NECT10, NECT12, NECT22, NECT30
<i>Carex korshinskyi</i>	NECT21
<i>Carex meyeriana</i>	NECT09
<i>Carex pediformis</i>	NECT03, NECT05, NECT06
<i>Carex siderosticta</i>	NECT08, NECT09
<i>Carex sp.</i>	NECT04, NECT05, NECT07, NECT09
<i>Carpinus cordata</i>	NECT09
<i>Carya hunanensis</i>	NSTEC11
<i>Caryota ochlandra</i>	NSTEC09
<i>Castanea seguinii</i>	NSTEC12
<i>Castanopsis carlesii</i>	NSTEC05
<i>Castanopsis chinensis</i>	NSTEC09
<i>Castanopsis eyrei</i>	NSTEC04, NSTEC06, NSTEC07
<i>Castanopsis fargesii</i>	NSTEC05, NSTEC07, NSTEC08, NSTEC12
<i>Castanopsis fissa</i>	NSTEC06, NSTEC07, NSTEC08, NSTEC09
<i>Castanopsis fordii</i>	NSTEC07
<i>Castanopsis sclerophylla</i>	NSTEC04, NSTEC05, NSTEC06
<i>Caulophyllum robustum</i>	NECT06, NECT07
<i>Celastrus gemmatus</i>	NSTEC11
<i>Celastrus hindsii</i>	NSTEC10
<i>Celastrus hypoleucus</i>	NSTEC07
<i>Celastrus orbiculatus</i>	NSTEC05
<i>Celtis sinensis</i>	NSTEC03, NSTEC10, NSTEC11, NSTEC12
<i>Cerasus japonica</i>	NSTEC02
<i>Ceratoides latens</i>	NECT32, NECT33
<i>Cercis chinensis</i>	NSTEC03

<i>Chenopodium acuminatum</i>	NECT14, NECT16, NECT19, NECT27
<i>Chenopodium album</i>	NECT23, NECT24
<i>Chenopodium aristatum</i>	NECT16, NECT20, NECT24
<i>Chenopodium glaucum</i>	NECT13
<i>Chloranthus japonicus</i>	NECT06, NECT08
<i>Chloris virgata</i>	NECT11, NECT12, NECT13, NECT19, NECT25
<i>Choerospondias axillaris</i>	NSTEC07
<i>Chrysosplenium alternifolium</i>	NECT06
<i>Cinnamomum appelianum</i>	NSTEC12
<i>Cinnamomum camphora</i>	NSTEC03, NSTEC06
<i>Cirsium setosum</i>	NECT24
<i>Cleistogenes songorica</i>	NECT28, NECT30, NECT31, NECT33
<i>Cleistogenes squarrosa</i>	NECT01, NECT02, NECT15, NECT16, NECT17, NECT18, NECT20, NECT21, NECT22, NECT24
<i>Clematis armandii</i>	NSTEC11, NSTEC13
<i>Clematis fusca var violaceae</i>	NECT07
<i>Clematis hexapetala</i>	NECT10
<i>Clematis sp.</i>	NECT03, NECT04, NECT06, NECT09
<i>Clematis terniflora var. mandshurica</i>	NECT10
<i>Clerodendrum mandarinorum</i>	NSTEC12
<i>Clerodendrum trichotomum</i>	NSTEC02
<i>Cleyera japonica</i>	NSTEC05
<i>Clintonia udensis</i>	NECT08
<i>Convallaria majalis</i>	NECT07
<i>Convolvulus ammannii</i>	NECT27, NECT28, NECT30, NECT31, NECT32, NECT33
<i>Convolvulus arvensis</i>	NECT15, NECT20, NECT21
<i>Coptosapelta diffusa</i>	NSTEC06, NSTEC07, NSTEC08
<i>Coriaria nepalensis</i>	NSTEC13
<i>Corylus heterophylla</i>	NECT03, NECT05, NECT06, NECT07, NECT08, NECT09, NECT10, NSTEC14
<i>Cotinus coggygria</i>	NSTEC13
<i>Crataegus pinnatifida</i>	NECT10
<i>Crataegus sp.</i>	NECT05
<i>Croton tiglium</i>	NSTEC10
<i>Cryptocarya chinensis</i>	NSTEC09
<i>Cryptocarya concinna</i>	NSTEC09
<i>Cryptomeria fortunei</i>	NSTEC06
<i>Cudrania cochinchinensis</i>	NSTEC10
<i>Cudrania tricuspidata</i>	NSTEC03
<i>Cunninghamia lanceolata</i>	NSTEC04, NSTEC06, NSTEC12
<i>Cuscuta chinensis</i>	NECT16
<i>Cyclobalanopsis gilva</i>	NSTEC05
<i>Cyclobalanopsis glauca</i>	NSTEC04, NSTEC05, NSTEC06, NSTEC07, NSTEC10, NSTEC11, NSTEC12
<i>Cyclobalanopsis gracilis</i>	NSTEC05
<i>Cyclobalanopsis stewardiana</i>	NSTEC05
<i>Cymbaria dahurica</i>	NECT23, NECT26, NECT27
<i>Cynanchum sibiricum</i>	NECT18, NECT19
<i>Cynanchum thesioides</i>	NECT02
<i>Dalbergia hancei</i>	NSTEC11
<i>Dalbergia hupeana</i>	NSTEC02, NSTEC04, NSTEC10, NSTEC13
<i>Dalbergia mimosoides</i>	NSTEC05

<i>Damnacanthus indicus</i>	NSTEC05
<i>Daphniphyllum oldhamii</i>	NSTEC07, NSTEC08, NSTEC11
<i>Dasymaschalon rostratum</i>	NSTEC09
<i>Decaspermum fruticosum</i>	NSTEC10
<i>Delphinium grandiflorum</i>	NECT02, NECT18
<i>Dendrotrophe frutescens</i>	NSTEC08
<i>Desmodium fallax</i> var. <i>mandshuricum</i>	NECT09
<i>Dianthus chinensis</i>	NECT18, NECT20, NECT21
<i>Dichroa febrifuga</i>	NSTEC11
<i>Dioscorea cirrhosa</i>	NSTEC05
<i>Dioscorea nipponica</i>	NECT03, NECT04, NECT05, NECT06, NECT09
<i>Dioscorea opposita</i>	NSTEC05
<i>Diospyros cathayensis</i>	NSTEC12
<i>Diospyros eriantha</i>	NSTEC09
<i>Diospyros kaki</i> var. <i>sylvestris</i>	NSTEC07, NSTEC12
<i>Diospyros lotus</i>	NSTEC04, NSTEC13
<i>Diospyros miaoshanica</i>	NSTEC11
<i>Diospyros morrisiana</i>	NSTEC08
<i>Diospyros tutcheri</i>	NSTEC08
<i>Diploclisia glaucescens</i>	NSTEC07
<i>Dischidia chinensis</i>	NSTEC09
<i>Distylium myricoides</i>	NSTEC06
<i>Dontostemon integrifolius</i>	NECT20, NECT21
<i>Dracocephalum argunense</i>	NECT07
<i>Dryopteris crassirhizoma</i>	NECT09
<i>Echinochloa crusgalli</i>	NECT10, NECT11, NECT12
<i>Echinops gmelinii</i>	NECT16, NECT19, NECT24
<i>Echinops</i> sp.	NECT02
<i>Elaeagnus henryi</i>	NSTEC12
<i>Elaeocarpus glabripetalus</i>	NSTEC08
<i>Elaeocarpus japonicus</i>	NSTEC05, NSTEC06, NSTEC07
<i>Embelia rudis</i>	NSTEC06, NSTEC07
<i>Engelhardtia roxburghiana</i>	NSTEC08
<i>Ephedra distachya</i>	NECT17
<i>Ephedra sinica</i>	NECT26
<i>Equisetum arvense</i>	NECT06
<i>Equisetum hyemale</i>	NECT05, NECT06
<i>Eragrostis cilianensis</i>	NECT16
<i>Eragrostis minor</i>	NECT12, NECT14, NECT30, NECT31
<i>Erodium stephanianum</i>	NECT02, NECT13
<i>Erycibe obtusifolia</i>	NSTEC09
<i>Erythrophleum fordii</i>	NSTEC09
<i>Euonymus alatus</i>	NECT03, NECT05, NECT06, NECT08, NECT09, NSTEC03
<i>Euonymus dielsianus</i>	NSTEC11
<i>Euonymus pauciflorus</i>	NECT07, NECT09
<i>Euphorbia esula</i>	NECT01, NECT02, NECT20
<i>Euphorbia humifusa</i>	NECT01, NECT02, NECT31
<i>Euphorbia humifusa</i> var. <i>pilosa</i>	NECT16
<i>Euphorbia lucorum</i>	NECT07

<i>Euphorbia mandshurica</i>	NECT10
<i>Eurya alata</i>	NSTEC12
<i>Eurya loquaiana</i>	NSTEC11
<i>Eurya nitida</i>	NSTEC07
<i>Eurya rubiginosa</i>	NSTEC05
<i>Eurya rubiginosa var. attenuata</i>	NSTEC04
<i>Euscaphis japonica</i>	NSTEC06
<i>Evodia fargesii</i>	NSTEC08
<i>Evodia leptala</i>	NSTEC08
<i>Ferula bungeana</i>	NECT16, NECT30, NECT31, NECT33
<i>Festuca dahurica</i>	NECT29
<i>Ficus fulva</i>	NSTEC07, NSTEC08
<i>Ficus henryi</i>	NSTEC11
<i>Ficus heteromorpha</i>	NSTEC12
<i>Ficus pandurata</i>	NSTEC06
<i>Ficus pandurata var. angustifolia</i>	NSTEC12
<i>Ficus pumila</i>	NSTEC06
<i>Ficus sarmentosa var. henryi</i>	NSTEC12
<i>Ficus variolosa</i>	NSTEC10
<i>Ficus wightiana</i>	NSTEC09
<i>Filifolium sibiricum</i>	NECT21
<i>Firmiana platanifolia</i>	NSTEC03, NSTEC10
<i>Fissistigma glaucescens</i>	NSTEC09
<i>Fissistigma oldhamii</i>	NSTEC07
<i>Fordia cauliflora</i>	NSTEC10
<i>Fragaria orientalis</i>	NECT08, NECT09
<i>Fraxinus bungeana</i>	NSTEC14
<i>Fraxinus mandshurica</i>	NECT05, NECT06
<i>Fraxinus rhynchophylla</i>	NECT03, NECT04, NECT05, NECT06, NECT08
<i>Galium manshuricum</i>	NECT08
<i>Galium verum</i>	NECT23
<i>Garcinia oblongifolia</i>	NSTEC09
<i>Gardenia jasminoides</i>	NSTEC04, NSTEC07, NSTEC08, NSTEC11
<i>Gentiana dahurica</i>	NECT25
<i>Geranium sp.</i>	NECT08
<i>Geranium transbaicalicum</i>	NECT18, NECT20
<i>Geum sp.</i>	NECT05
<i>Gironniera subaequalis</i>	NSTEC09
<i>Glochidion eriocarpum</i>	NSTEC08
<i>Glochidion puberum</i>	NSTEC02, NSTEC03
<i>Glycine soja</i>	NECT09
<i>Glycyrrhiza uralensis</i>	NECT02, NECT23, NECT26
<i>Gnetum montanum</i>	NSTEC09
<i>Gnetum parvifolium</i>	NSTEC07
<i>Grewia biloba</i>	NSTEC01, NSTEC10
<i>Haplophyllum dauricum</i>	NECT02, NECT26, NECT30, NECT31, NECT32
<i>Haplophyllum tragacanthoides</i>	NECT32
<i>Hedysarum fruticosum</i>	NECT15, NECT17

<i>Helicia cochinchinensis</i>	NSTEC07
<i>Hemerocallis middendorffii</i>	NECT03, NECT04
<i>Heteropappus altaicus</i>	NECT02, NECT10, NECT15, NECT20, NECT22, NECT23, NECT24, NECT25, NECT26, NECT27
<i>Hieracium denticulata</i>	NECT12
<i>Hieracium denticuliferum</i>	NECT10
<i>Hippolytia trifida</i>	NECT30, NECT31, NECT32, NECT33
<i>Hovenia acerba</i>	NSTEC11
<i>Ilex asprella</i>	NSTEC08
<i>Ilex cornuta</i>	NSTEC03
<i>Ilex hylonoma</i>	NSTEC10
<i>Ilex pubescens</i>	NSTEC06, NSTEC07, NSTEC08
<i>Ilex purpurea</i>	NSTEC04, NSTEC11
<i>Ilex viridis</i>	NSTEC07
<i>Impatiens furcillata</i>	NECT06, NECT09
<i>Indigofera ichangensis</i>	NSTEC06
<i>Indocalamus tessellatus</i>	NSTEC07
<i>Inula britannica</i>	NECT11, NECT12
<i>Iris lactea var. chinensis</i>	NECT10, NECT13, NECT22, NECT25, NECT33
<i>Itea chinensis var. oblonga</i>	NSTEC06, NSTEC07
<i>Ixeris chinensis</i>	NECT04
<i>Ixeris denticulata</i>	NECT10, NECT12
<i>Ixora chinensis</i>	NSTEC09
<i>Jasminum lanceolarium</i>	NSTEC12
<i>Juglans mandshurica</i>	NECT09, NSTEC14
<i>Kadsura longipedunculata</i>	NSTEC06, NSTEC11, NSTEC12
<i>Kalimeris integrifolia</i>	NECT11
<i>Kalopanax septemlobus</i>	NSTEC03, NSTEC12
<i>Kochia prostrata</i>	NECT23, NECT24, NECT27, NECT29
<i>Kochia scoparia var. sieversiana</i>	NECT12, NECT13
<i>Kummerowia striata</i>	NECT10, NECT12
<i>Lamium japonicum</i>	NECT11
<i>Larix olgensis</i>	NECT05, NECT07
<i>Lasianthus lancilimbus</i>	NSTEC06, NSTEC07
<i>Lathyrus davidii</i>	NECT04
<i>Lathyrus hedysaroides var. subsericea</i>	NECT15
<i>Laurocerasus spinulosa</i>	NSTEC06
<i>Laurocerasus zippeliana</i>	NSTEC11
<i>Leontopodium leontopodioides</i>	NECT15
<i>Leonurus japonicus</i>	NECT20
<i>Lepidium apetalum</i>	NECT13
<i>Lespedeza bicolor</i>	NECT03, NECT05, NECT06, NECT07, NECT08, NSTEC13, NSTEC14
<i>Lespedeza davurica</i>	NECT01, NECT02, NECT10, NECT15, NECT17, NECT18, NECT19, NECT20, NECT21
<i>Lespedeza formosa</i>	NSTEC02
<i>Lespedeza hedysaroides</i>	NECT15, NECT20
<i>Leymus chinensis</i>	NECT01, NECT11, NECT12, NECT13, NECT17, NECT18, NECT20, NECT21, NECT22, NECT24, NECT25, NECT26
<i>Ligustrum lucidum</i>	NSTEC03
<i>Ligustrum sinense</i>	NSTEC11
<i>Lilium lancifolium</i>	NECT08, NECT09

<i>Limonium aureum</i>	NECT32
<i>Limonium bicolor</i>	NECT13, NECT20, NECT26
<i>Lindera aggregata</i>	NSTEC04, NSTEC06
<i>Lindera chunii</i>	NSTEC09
<i>Lindera communis</i>	NSTEC11
<i>Lindera glauca</i>	NSTEC03, NSTEC06
<i>Lindera megaphylla</i>	NSTEC11
<i>Linum stelleroides</i>	NECT10
<i>Liquidambar formosana</i>	NSTEC03, NSTEC05, NSTEC06
<i>Lithocarpus glaber</i>	NSTEC05, NSTEC06, NSTEC07, NSTEC08, NSTEC11
<i>Litsea coreana</i>	NSTEC11, NSTEC12
<i>Litsea coreana var. sinensis</i>	NSTEC10
<i>Litsea cubeba</i>	NSTEC08
<i>Litsea machiloides</i>	NSTEC08
<i>Litsea wilsonii</i>	NSTEC06, NSTEC07, NSTEC08
<i>Lonicera chrysantha</i>	NECT03, NECT05
<i>Lonicera cinerea</i>	NSTEC06
<i>Lonicera maackii</i>	NECT06, NECT09, NSTEC14
<i>Lonicera monantha</i>	NECT09
<i>Lonicera tartarinowii</i>	NSTEC13
<i>Loropetalum chinense</i>	NSTEC04, NSTEC05, NSTEC06, NSTEC07, NSTEC10, NSTEC12
<i>Lychnis fulgens</i>	NECT06, NECT09
<i>Lygodium alpestre</i>	NECT09
<i>Lyonia ovalifolia var. elliptica</i>	NSTEC07
<i>Maackia amurensis</i>	NECT05, NECT06
<i>Machilus chinensis</i>	NSTEC09
<i>Machilus pauhoi</i>	NSTEC11
<i>Machilus thunbergii</i>	NSTEC05
<i>Macropanax rosthornii</i>	NSTEC11
<i>Maesa japonica</i>	NSTEC06, NSTEC11, NSTEC12
<i>Maesa perlaria</i>	NSTEC11
<i>Mahonia japonica</i>	NSTEC12
<i>Mallotus philippensis</i>	NSTEC11
<i>Matteuccia struthiopteris</i>	NECT09
<i>Medicago lupulina</i>	NECT16
<i>Melastoma sanguineum</i>	NSTEC09
<i>Melilotoides ruthenica</i>	NECT02, NECT10, NECT17, NECT18, NECT20, NECT21, NECT22, NECT24, NECT25, NECT26, NECT27
<i>Melilotus suaveolens</i>	NECT11
<i>Meliosma cuneifolia</i>	NSTEC09
<i>Memecylon ligustrifolium</i>	NSTEC09
<i>Messerschmidia sibirica</i>	NECT13
<i>Metaplexis japonica</i>	NECT13
<i>Microdesmis caseariifolia</i>	NSTEC09
<i>Millettia dielsiana</i>	NSTEC07, NSTEC10, NSTEC11
<i>Millettia reticulata</i>	NSTEC06, NSTEC10
<i>Monotropa hypopitys</i>	NECT08
<i>Morinda umbellata</i>	NSTEC05, NSTEC06
<i>Mukdenia rossii</i>	NECT05
<i>Mussaenda erosa</i>	NSTEC08

<i>Mussaenda esquirolii</i>	NSTEC12
<i>Mussaenda pubescens</i>	NSTEC07
<i>Myrica rubra</i>	NSTEC05
<i>Neolitsea aurata var zhejinagensis</i>	NSTEC05
<i>Onoclea sensibilis</i>	NECT05
<i>Oreocnide frutescens</i>	NSTEC06
<i>Ormosia glaberrima</i>	NSTEC09
<i>Ormosia henryi</i>	NSTEC05
<i>Orostachys malacophylla</i>	NECT23
<i>Osmanthus cooperi</i>	NSTEC04
<i>Osmanthus fragrans</i>	NSTEC03, NSTEC11
<i>Oxytropis myriophylla</i>	NECT25
<i>Oxytropis sp.</i>	NECT02, NECT25
<i>Paederia scandens</i>	NSTEC03
<i>Paeonia japonica</i>	NECT06, NECT07
<i>Paris verticillata</i>	NECT08
<i>Parthenocissus laetevirens</i>	NSTEC11
<i>Parthenocissus tricuspidata</i>	NSTEC03
<i>Patrinia rupestris</i>	NECT15
<i>Paulownia kawakamii</i>	NSTEC07
<i>Peganum harmala</i>	NECT28, NECT33
<i>Pennisetum flaccidum</i>	NECT15, NECT16, NECT17, NECT18, NECT20
<i>Pericampylus glaucus</i>	NSTEC06, NSTEC07
<i>Periploca sepium</i>	NSTEC13
<i>Peucedanum terebinthaceum</i>	NECT07
<i>Phellodendron amurense</i>	NECT05, NECT06
<i>Philadelphus tenuifolius</i>	NECT03, NECT07, NECT08, NECT09
<i>Phlomis maximowiczii</i>	NECT04, NECT06, NECT09
<i>Phlomis tuberosa</i>	NECT25
<i>Phoebe hunanensis</i>	NSTEC07
<i>Phoebe sheareri</i>	NSTEC11
<i>Photinia beauverdiana</i>	NSTEC11
<i>Photinia davidsoniae</i>	NSTEC12
<i>Photinia glabra</i>	NSTEC04, NSTEC08
<i>Photinia parvifolia</i>	NSTEC07
<i>Photinia serrulata</i>	NSTEC07
<i>Phragmites australis</i>	NECT05, NECT11, NECT13
<i>Phragmites hirsutus</i>	NECT11
<i>Phyllostachys heteroclada</i>	NSTEC03
<i>Picea sp.</i>	NECT07
<i>Picrasma chinensis</i>	NSTEC09
<i>Pinus koraiensis</i>	NECT06, NECT08, NECT09
<i>Pinus massoniana</i>	NSTEC03, NSTEC06, NSTEC10, NSTEC12
<i>Pinus tabuliformis</i>	NECT04, NECT10, NSTEC01, NSTEC02, NSTEC13
<i>Piper chinense</i>	NSTEC09
<i>Piper hancei</i>	NSTEC11
<i>Piper wallichii</i>	NSTEC11
<i>Pistacia chinensis</i>	NSTEC03, NSTEC12, NSTEC13
<i>Pittosporum sahnianum</i>	NSTEC06, NSTEC12

<i>Pittosporum tobira</i>	NSTEC03
<i>Plantago depressa</i>	NECT12
<i>Platycladus orientalis</i>	NSTEC02, NSTEC13
<i>Platycodon grandiflorus</i>	NECT10, NSTEC02
<i>Pleioblastus amarus</i>	NSTEC05, NSTEC06, NSTEC07
<i>Poa angustifolia</i>	NECT24
<i>Podocarpium podocarpum</i>	NSTEC12
<i>Podocarpium podocarpum var. fallax</i>	NSTEC11
<i>Podocarpium podocarpum var. oxyphyllum</i>	NSTEC03, NSTEC11
<i>Polygala tenuifolia</i>	NECT01, NECT10
<i>Polygonatum oderatum</i>	NECT04, NECT06, NECT07
<i>Polygonum divaricatum</i>	NECT17, NECT18, NECT20, NECT21, NECT23
<i>Polygonum sibiricum</i>	NECT11, NECT13
<i>Populus davidiana</i>	NECT03, NECT09, NECT10
<i>Potentilla acaulis</i>	NECT21, NECT22, NECT24, NECT24
<i>Potentilla bifurca</i>	NECT21, NECT22, NECT24
<i>Potentilla chinensis</i>	NECT10, NECT12, NECT17, NECT20, NECT21, NECT24, NECT25, NECT26
<i>Potentilla conferta</i>	NECT18
<i>Potentilla discolor</i>	NECT01
<i>Potentilla flagellaris</i>	NECT12
<i>Potentilla tanacetifolia</i>	NECT02
<i>Premna fordii</i>	NSTEC06
<i>Prunus/Malus sp.</i>	NECT06
<i>Prunus padus</i>	NECT04
<i>Psammochloa villosa</i>	NECT24
<i>Psychotria serpens</i>	NSTEC09
<i>Pteridium aquilinum</i>	NECT03, NECT04, NECT05, NECT06, NECT08, NECT09
<i>Puccinella chinampoensis</i>	NECT11
<i>Pueraria lobata</i>	NSTEC10
<i>Pyrus betulifolia</i>	NSTEC13
<i>Quercus acutissima</i>	NSTEC01, NSTEC02, NSTEC03
<i>Quercus aliena</i>	NSTEC03, NSTEC12, NSTEC13
<i>Quercus baronii</i>	NSTEC13
<i>Quercus chenii</i>	NSTEC13
<i>Quercus fabrei</i>	NSTEC01
<i>Quercus mongolica</i>	NECT04, NECT05, NECT06, NECT07, NECT08, NECT09, NECT10, NSTEC14
<i>Quercus serrata var. brevipetiolata</i>	NSTEC02
<i>Radermachera sinica</i>	NSTEC10
<i>Randia cochinchinensis</i>	NSTEC07, NSTEC08, NSTEC09
<i>Ranunculus chinensis</i>	NECT07
<i>Rapanea kwangsiensis</i>	NSTEC10
<i>Raphiolepis indica</i>	NSTEC04
<i>Raphiolepis lanceolata</i>	NSTEC08
<i>Reaumuria soongarica</i>	NECT32
<i>Rhamnus leptophylla</i>	NSTEC12, NSTEC13, NSTEC14
<i>Rhamnus schneideri</i>	NECT04, NECT07
<i>Rhamnus sp.</i>	NECT05, NECT06
<i>Rhaponticum uniflorum</i>	NECT15, NECT25, NECT26, NECT27
<i>Rhododendron mariae</i>	NSTEC08
<i>Rhododendron mariesii</i>	NSTEC04

<i>Rhododendron ovatum</i>	NSTEC04, NSTEC05
<i>Rhododendron sp.</i>	NECT07
<i>Rhodomyrtus tomentosa</i>	NSTEC08
<i>Rhus chinensis</i>	NSTEC13
<i>Ribes amurense</i>	NECT03
<i>Robinia pseudoacacia</i>	NSTEC01
<i>Rosa cymosa</i>	NSTEC03
<i>Rosa laevigata</i>	NSTEC06
<i>Rosa sp.</i>	NECT03, NECT08, NECT10
<i>Rourea minor</i>	NSTEC09
<i>Rubia cordifolia</i>	NECT09
<i>Rubia sp.</i>	NECT06, NECT08
<i>Rubia sylvatica</i>	NECT04, NECT05, NECT09
<i>Rubus columellaris</i>	NSTEC07
<i>Rubus corchorifolius</i>	NSTEC06, NSTEC07
<i>Rubus ichangensis</i>	NSTEC11
<i>Rubus irenaeus</i>	NSTEC11
<i>Rubus malifolius</i>	NSTEC11
<i>Rubus parvifolius</i>	NSTEC03
<i>Rubus sp.</i>	NECT08
<i>Rubus xanthocarpus</i>	NSTEC14
<i>Sabia swinhoei</i>	NSTEC06, NSTEC11
<i>Sabina chinensis</i>	NSTEC03
<i>Sageretia henryi</i>	NSTEC11, NSTEC12
<i>Sageretia thea</i>	NSTEC06, NSTEC13
<i>Salix gordejewii</i>	NECT16
<i>Salix gracilistyla</i>	NECT05
<i>Salix viminalis</i>	NECT05
<i>Salsola collina</i>	NECT13, NECT15, NECT18, NECT19, NECT20, NECT22, NECT27, NECT28, NECT29, NECT30, NECT31, NECT33
<i>Salsola passerina</i>	NECT32
<i>Salsola ruthenica</i>	NECT16
<i>Sambucus sp.</i>	NECT08
<i>Sanguisorba officinalis</i>	NECT11
<i>Sanicula chinensis</i>	NECT09
<i>Sapium discolor</i>	NSTEC08
<i>Sapium rotundifolium</i>	NSTEC10
<i>Sarcandra glabra</i>	NSTEC07, NSTEC09
<i>Sarcosperma arboreum</i>	NSTEC09
<i>Saussurea japonica</i>	NECT02
<i>Saussurea parviflora</i>	NECT02
<i>Schefflera octophylla</i>	NSTEC08
<i>Schima remotiserrata</i>	NSTEC08
<i>Schima superba</i>	NSTEC04, NSTEC05, NSTEC09
<i>Schizonepeta multifida</i>	NECT23
<i>Scorzonera divaricata</i>	NECT28, NECT29, NECT30, NECT31, NECT32
<i>Scorzonera muriculata</i>	NECT32
<i>Scutellaria baicalensis</i>	NECT01, NECT02, NECT18
<i>Scutellaria scordifolia</i>	NECT02
<i>Scutellaria sp.</i>	NECT07

<i>Scutellaria viscidula</i>	NECT19
<i>Securinega suffruticosa</i>	NECT04, NECT10
<i>Sedum aizoon</i>	NECT07, NECT09
<i>Serissa serissoides</i>	NSTEC03, NSTEC11, NSTEC12
<i>Serratula glauca</i>	NECT18
<i>Serratula yamatsutana</i>	NECT02, NECT15, NECT21, NECT23, NECT25, NECT26
<i>Sesamum indicum</i>	NECT02
<i>Setaria viridis</i>	NECT10, NECT13, NECT14, NECT15, NECT16, NECT19, NECT26, NECT33
<i>Setaria viridis var. depressa</i>	NECT30, NECT31
<i>Siler divaricatum</i>	NECT18, NECT26
<i>Siphonostegia chinensis</i>	NECT10, NECT10
<i>Sloanea sinensis</i>	NSTEC07
<i>Smilax biumbellata</i>	NSTEC10
<i>Smilax china</i>	NSTEC04, NSTEC05, NSTEC08
<i>Smilax glabra</i>	NSTEC06
<i>Smilax glaucochina</i>	NSTEC03
<i>Smilax hypoglauca</i>	NSTEC09, NSTEC13
<i>Smilax lanceifolia</i>	NSTEC07
<i>Smilax polycolea</i>	NSTEC11
<i>Sonchus brachyotus</i>	NECT10
<i>Sophora flavescens</i>	NECT18
<i>Sorbaria sorbifolia</i>	NECT05, NECT06
<i>Spiraea pubescens</i>	NSTEC14
<i>Spiraea trilobata</i>	NECT23, NSTEC01
<i>Stauntonia chinensis</i>	NSTEC05
<i>Stellaria chamaejasme</i>	NECT02, NECT23
<i>Sterculia lanceolata</i>	NSTEC09
<i>Stipa glareosa</i>	NECT29
<i>Stipa gobica</i>	NECT30, NECT31, NECT32, NECT33
<i>Stipa grandis</i>	NECT21
<i>Stipa krylovii</i>	NECT01, NECT02, NECT15, NECT22, NECT23, NECT24, NECT25, NECT26, NECT27, NECT28
<i>Streptopus sp.</i>	NECT09
<i>Streptopus streptopoides</i>	NECT03
<i>Styrax calvescens</i>	NSTEC07
<i>Styrax japonicus</i>	NSTEC05
<i>Styrax obassis</i>	NSTEC06
<i>Styrax odoratissima</i>	NSTEC07, NSTEC10
<i>Suaeda glauca</i>	NECT11, NECT13
<i>Swainsona salsula</i>	NECT13
<i>Swida bretschnideri</i>	NSTEC14
<i>Swida wilsoniana</i>	NSTEC12
<i>Symplocos heishanensis</i>	NSTEC05
<i>Symplocos lancilimba</i>	NSTEC05
<i>Symplocos laurina</i>	NSTEC11
<i>Symplocos paniculata</i>	NSTEC03
<i>Symplocos stellaris</i>	NSTEC05
<i>Symplocos sumuntia</i>	NSTEC04, NSTEC05, NSTEC07
<i>Syneilesis aconitifolia</i>	NECT04, NECT07
<i>Synurus deltooides</i>	NECT07

<i>Syzygium austrosinense</i>	NSTEC07, NSTEC08
<i>Taraxacum mongolicum</i>	NECT02
<i>Taraxacum ohwianum</i>	NECT12, NECT13
<i>Tarenna attenuata</i>	NSTEC08
<i>Tarenna mollissima</i>	NSTEC06, NSTEC07
<i>Tarennoidea wallichii</i>	NSTEC07
<i>Tetracera asiatica</i>	NSTEC09
<i>Tetrastigma hemsleyanum</i>	NSTEC09
<i>Tetrastigma planicaule</i>	NSTEC09
<i>Tetrastigma wulinshanense</i>	NSTEC11
<i>Thalictrum simplex</i>	NECT11
<i>Thalictrum sp.</i>	NECT01, NECT08, NECT09, NECT10, NECT26
<i>Thalictrum squarrosum</i>	NECT15, NECT16, NECT18, NECT21
<i>Thalictrum squarrosum var. supradecompositum</i>	NECT02, NECT25
<i>Thalictrum tuberiferum</i>	NECT03, NECT04, NECT05, NECT06
<i>Thalictrum squarrosum</i>	NECT26
<i>Thermopsis lanceolata</i>	NECT13, NECT23
<i>Thymus mongolicus</i>	NECT01, NECT02
<i>Tilia amurensis</i>	NECT03, NECT05, NECT07
<i>Tilia mandshurica</i>	NECT03, NECT06, NECT07, NECT08, NECT09
<i>Tilia paucicostata</i>	NSTEC14
<i>Toxicodendron succedaneum</i>	NSTEC06, NSTEC07, NSTEC08
<i>Toxicodendron sylvestri</i>	NSTEC11, NSTEC12
<i>Trachelospermum axillare</i>	NSTEC06
<i>Trachelospermum jasminoides</i>	NSTEC03, NSTEC05, NSTEC10, NSTEC11
<i>Tragus racemosus</i>	NECT02, NECT14, NECT16
<i>Tribulus terrestris</i>	NECT02, NECT14, NECT16, NECT19, NECT30, NECT33
<i>Trifolium lupinaster</i>	NECT07
<i>Tripolium vulgare</i>	NECT10
<i>Turpinia arguta</i>	NSTEC11
<i>Tylophora silvestris</i>	NSTEC05
<i>Ulmus changii</i>	NSTEC06
<i>Ulmus davidiana var. japonica</i>	NECT03, NECT04, NECT05, NECT06, NECT09, NECT10, NECT17, NECT21, NSTEC14
<i>Ulmus macrocarpa</i>	NECT08
<i>Ulmus parvifolia</i>	NSTEC03
<i>Urtica angustifolia</i>	NECT03, NECT04
<i>Vaccinium bracteatum</i>	NSTEC06, NSTEC07
<i>Vaccinium mandarinorum</i>	NSTEC04, NSTEC05, NSTEC06
<i>Vernicia fordii</i>	NSTEC03, NSTEC06, NSTEC13
<i>Vernicia montana</i>	NSTEC07
<i>Viburnum brachybotryum</i>	NSTEC11
<i>Viburnum burejaeticum</i>	NECT09
<i>Viburnum dilatatum</i>	NSTEC11
<i>Viburnum erosum</i>	NSTEC05
<i>Viburnum sargentii</i>	NECT05, NECT06, NECT09
<i>Vicia amoena</i>	NECT04
<i>Vicia unijuga</i>	NECT05, NECT06, NECT07, NECT08
<i>Viola acuminata</i>	NECT07, NECT08, NECT09
<i>Viola biflora</i>	NECT09

<i>Viola sp.</i>	NECT03, NECT07, NECT08, NECT10
<i>Viola variegata</i>	NECT04
<i>Vitex negundo</i>	NSTEC02, NSTEC03, NSTEC10, NSTEC13
<i>Vitex negundo var. heterophylla</i>	NSTEC01
<i>Vitis amurensis</i>	NECT06, NECT08
<i>Vitis bryoniifolia</i>	NSTEC13
<i>Vitis heyneana ssp. ficifolia</i>	NSTEC01
<i>Wisteria sinensis</i>	NSTEC04
<i>Xanthium strumarium</i>	NECT12
<i>Zanthoxylum echinocarpum</i>	NSTEC12
<i>Zanthoxylum podocarpum</i>	NSTEC10
<i>Zanthoxylum schinifolium</i>	NSTEC02
<i>Zelkova serrata</i>	NSTEC13
<i>unidentified chenopod</i>	NECT27
<i>unidentified forb</i>	NECT01, NECT06, NECT08, NECT10
<i>unidentified geophyte</i>	NECT02
<i>unidentified grass</i>	NECT01, NECT02, NECT15, NECT17, NECT21
<i>unidentified ground creeper</i>	NECT09
<i>unidentified Scrophulariaceae</i>	NECT02
<i>unidentified semi-rosette forb</i>	NECT02