



Supplement of

Parameterization of biogeochemical sediment–water fluxes using in-situ measurements and a steady-state diagenetic model

A. Laurent et al.

Correspondence to: A. Laurent (arnaud.laurent@dal.ca)

The copyright of individual parts of the supplement might differ from the CC-BY 3.0 licence.

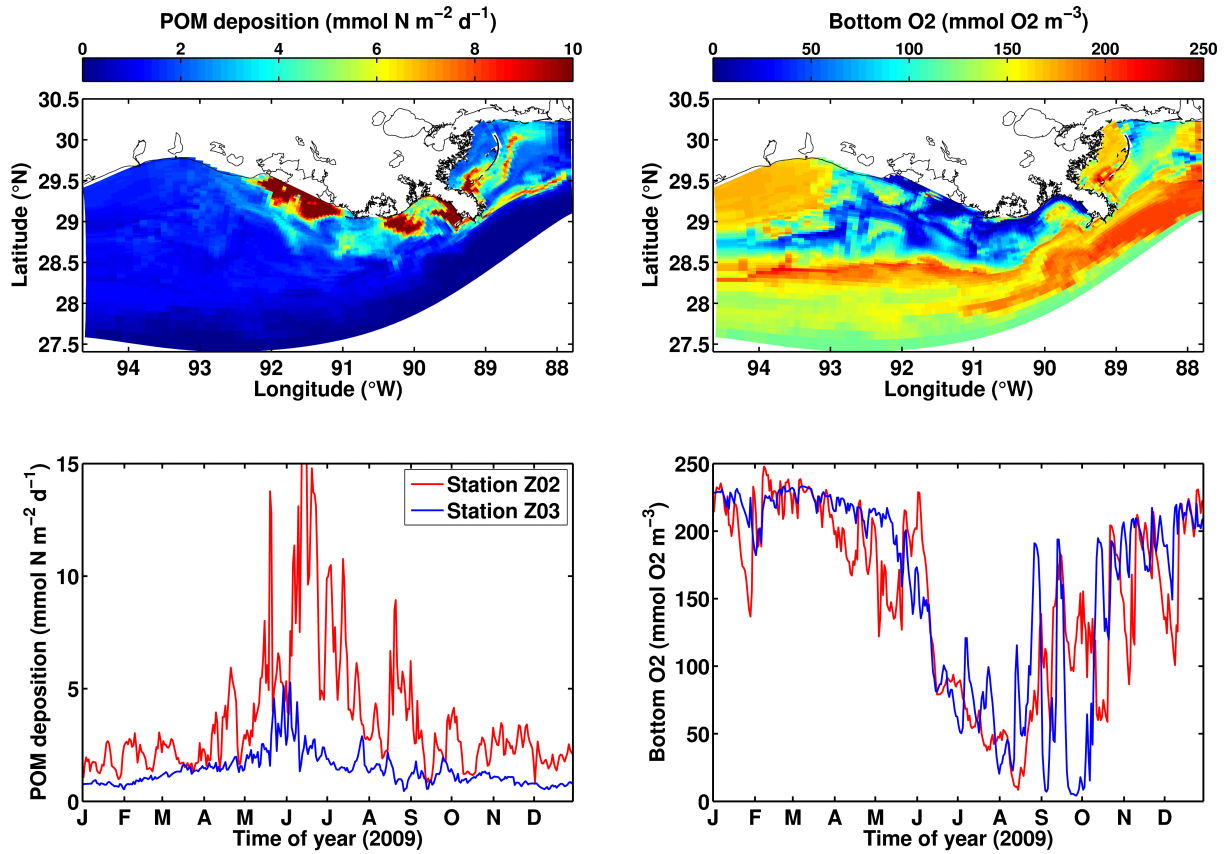


Figure S1. Spatial (top) and temporal (bottom) POM depositional flux and bottom water O₂ concentration in the biogeochemical circulation model. The upper panels represent a snapshot of bottom water conditions on July 20th, 2009. This dataset is used to force the diagenetic model in the meta-modeling procedure (Section 2.2) and to compare the meta-model and H&D parameterizations (Figure S2).

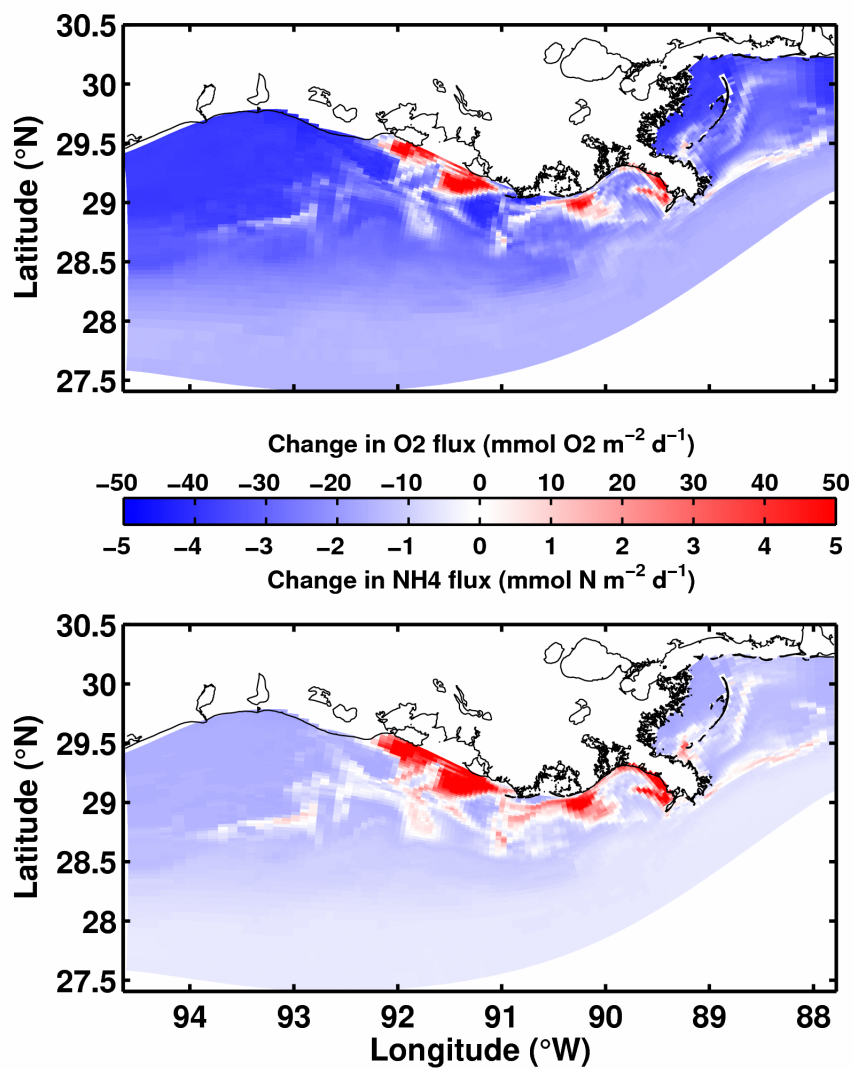


Figure S2. Difference between parameterized oxygen (top panel) and ammonium (bottom panel) fluxes during the LUMCON cruise in 2009 and fluxes simulated with the H&D parameterization.