

1 **Relationships between burned area, forest cover loss and land cover** 2 **change in the Brazilian Amazon based on satellite data**

3 **T. Fanin¹ and G. R. van der Werf¹**

4 [1] Faculty of Earth and Life Sciences, VU University, Amsterdam, The Netherlands

5 Correspondence to: T. Fanin (t.fanin@vu.nl)

6 **Abstract**

7 Fires are used as a tool in the deforestation process. Yet, the relationship between fire and
8 deforestation may vary temporally and spatially depending on the type of deforestation and
9 climatic conditions. This study evaluates spatiotemporal dynamics of deforestation and fire
10 represented by burned area over the 2002 – 2012 period in the Brazilian Legal Amazon. As a
11 first step, we compared newly available Landsat-based maps of gross forest cover loss from the
12 Global Forest Change (GFC) project with maps of deforestation extent from the Amazon
13 Deforestation Monitoring Project (PRODES) produced by the Brazilian National Institute for
14 Space Research (INPE). As a second step, we rescaled the Landsat-based data to the 500 meter
15 resolution of the Moderate Resolution Imaging Spectroradiometer (MODIS) burned area data
16 (MCD64A1) and stratified this using MODIS land cover data to study the role of burned area in
17 forest cover loss and deforestation. We found that while GFC forest cover loss and PRODES
18 deforestation generally agreed on spatial and temporal dynamics, there were several key
19 differences between the datasets. Both showed a decrease in the extent of forest cover loss or
20 deforestation after 2004, but the drop was larger and more continuous in PRODES than in GFC.
21 The observed decrease in forest cover loss or deforestation rates over our study period was
22 mainly due to lower clearing rates in the evergreen broadleaf forests in the states of Mato
23 Grosso, Pará and Rondônia. GFC indicated anomalous high forest cover loss in the years 2007
24 and 2010 not reported by PRODES. The burned area data indicated that this was predominantly
25 related to increased fire activity occurring outside of the tropical forest area during these dry
26 years, mainly in Pará. This indicated that fire and forest loss dynamics in woodlands or
27 secondary forests may be equally important as deforestation in regulating atmospheric CO₂
28 concentrations. In addition to the decrease in forest cover loss rates, we also found that post-
29 deforestation fire use declined by more than a factor two; burned area within 5 years after forest

1 cover loss decreased from 54% to 39% during our study period.

2 **1 Introduction:**

3 In the tropics, fires are regularly used as a cheap means to dispose of vegetative debris on
4 deforested land for the purpose of agriculture or pasture, and to maintain an open landscape. Fire
5 represents a major source of carbon emissions in the Amazon, especially in the southern fringe of
6 the Amazon known as the arc of deforestation (Fearnside et al., 2009). Various factors contribute
7 to relatively high rates of deforestation in this region, including available infrastructure and
8 capital and relatively long dry seasons (Kirby et al., 2006). Fire susceptibility is influenced by
9 factors such as deforestation, forest management, cultivation and reforestation (Osborne, 2000).
10 Development of human infrastructure including road construction, and the spread of residential
11 settlements in general increase deforestation and fire activity in more remote regions (Nepstad et
12 al., 2001; Malhi et al., 2009). In 2005, approximately 90% of the observed burning in the
13 southeast of Rondônia and the northwest of Mato Grosso occurred in previously deforested
14 areas, thereby demonstrating the use of fire in and after land use and land cover change
15 (LULCC) processes (Lima et al., 2012).

16 The objectives of landowners partly govern the degree to which fire is used in the deforestation
17 process. In general, three stages can be distinguished: logging, clearing and maintenance. In
18 tropical logging, by only harvesting selected trees, bulldozers create networks of forest roads,
19 killing non-harvested trees and fragmenting the forest and its canopy (Johns et al., 1996). This
20 practice increases the amount of dead wood in the understory and the likelihood of fires. The
21 damaged canopy allows light and wind to penetrate, increasing desiccation (Holdsworth and Uhl,
22 1997; Cochrane and Laurance, 2008). If fires occur they can affect forest composition and
23 structure. Recovery is diminished due to the impact of surface fires on seed availability (Van
24 Nieuwstadt et al., 2001). For clearing, slash-and-burn is a very efficient technique to clear land
25 intentionally for cattle or pasture (Tinker et al., 1996). To prepare the field, vegetation is cut and
26 left on the ground to dry. At the end of the dry season this is subsequently burned. If biomass
27 remains after the first fire, the remains are piled up and burned again, often until all biomass is
28 removed. Once everything is cleared, planting can be done directly in the ashes. Forest edge
29 biodiversity is impoverished by grass invasion due to repetitive burning in rapid agricultural
30 expansion (Balch et al., 2009). Maintenance fires are used regularly to prevent trees from

1 invading pastures after deforestation, for nutrient recycling and to remove crop residues (van der
2 Werf et al., 2009).

3 The vast scales of fire and deforestation have become increasingly evident as a result of
4 developments in remote sensing and research that has used the continuously increasing data
5 streams associated with this. Often these deforestation-focused studies used NASA's Landsat
6 data (Tucker et al., 2004), but coarser scale Moderate Resolution Imaging Spectroradiometer
7 (MODIS) data is also used for rapid identification of deforestation location areas and trends in
8 dynamics (Morton et al., 2005). Landsat generated deforestation datasets allow accurate
9 quantification of the total area of deforestation (Broich et al., 2009). Now spanning a time frame
10 of approximately 25 years, the Brazilian National Institute for Space Research (INPE) has
11 created the Amazon Deforestation Monitoring Project (PRODES) to quantify deforestation rates
12 in the Brazilian Legal Amazon (BLA) (INPE, 2014). Initially only available in a tabular format,
13 digital maps were created using a new methodology based on the work of Shimabukuro et al.
14 (1998) from 1997 onwards (Hansen et al., 2008). PRODES has been used in many studies to
15 evaluate the effects of deforestation (e.g., Morton et al., 2006; Broadbent et al., 2008). Also
16 using Landsat satellite imagery, the Global Forest Change project (GFC) has compiled a global
17 forest cover loss dataset at the same spatial resolution as PRODES with an annual time step for
18 the period 2001 – 2013 (Hansen et al., 2013). The objectives of these two datasets diverge as
19 PRODES only focuses on primary forest loss, while GFC includes forest changes in every type
20 of vegetation taller than 5m in height and is a global data set while PRODES only focuses on the
21 BLA.

22 Fire has been used as part of the clearing process since the inauguration of the Transamazon
23 Highway in 1970 (Fearnside, 2005). Different remotely sensed datasets allow the quantity and
24 intensity of fires to be estimated. Active fire algorithms (e.g., Giglio et al., 2003) detect a fire at
25 the time of satellite overpass, while burned area algorithms (e.g., Roy et al., 2008) use satellite
26 time series of vegetation indices and other information to classify whether a pixel was burned or
27 not. Burned area algorithms are less sensitive to cloud cover and smoke and are therefore more
28 reliable for spatiotemporal studies allowing better analysis of spatial association between
29 landscape attributes and burning events, while active fires are better for identifying smaller fires
30 and yield near-real time information (Roy et al., 2008).

1 After the first fire following deforestation there is generally still too much biomass on the ground
2 to enable agriculture or cattle grazing. Usually, repetitive burning is carried out to remove
3 remaining biomass. The number of fires is thought to depend on the post-deforestation land use
4 with agriculture requiring more complete combustion than pastures. For example, in a previous
5 modeling exercise pasture combustion completeness was set between 50-90%, while conversion
6 to cropland may lead to 100% combustion completeness over a period of 1-3 years (Morton et
7 al., 2008). The connection between these fires and deforestation is well established. For example,
8 according to a study focusing on one Landsat 5 TM tile (231/67 in the WR-2 indexing system) at
9 the border of Rondônia and Mato Grosso, 31% of the area burned in 2005 was deforested in one
10 of the preceding 3 years (Lima et al., 2012).

11 Deforestation and forest cover loss rates are impacted by numerous socio-economic factors, and
12 via the fire – deforestation link drought also plays a role in explaining spatio-temporal variability
13 (van der Werf et al., 2008). In general, drier than normal dry seasons see increased fire activity
14 (Chen et al., 2013) which can inhibit rainfall, creating a feedback mechanism (Nobre et al., 1991;
15 Nepstad et al., 2001). In addition, the vulnerability of these forests may increase due to climate
16 change (Aragão et al., 2008) with increased temperatures and stronger droughts (IPCC, 2007). In
17 2005, 2007, and 2010, three strong droughts occurred in the Amazon. Standardized anomalies of
18 dry-season rainfall showed that in 2005 37%, and in 2010 57%, of the total area was
19 experiencing lower than average rainfall, when defined as more than 1 standard deviation below
20 the long-term mean (Lewis et al., 2011). The 2005 event increased the number of fires observed
21 by satellite-derived monthly and annual time series by 33% compared to the 1999-2005 mean
22 (Aragão et al., 2007). Droughts are associated with the El Niño – Southern Oscillation, but are
23 also impacted by tropical Atlantic sea surface temperature (SST) anomalies related to the
24 Atlantic Multidecadal Oscillation (AMO) (Marengo et al., 2008). Eastern Amazonia is more
25 vulnerable to fire during El Niño whereas the south and southwest is more linked to AMO (Chen
26 et al., 2011). Southern and Eastern states in the Amazon basin are relatively dry with lower
27 annual rainfall and stronger dry seasons, while the interior of the Amazon is more humid
28 (Nepstad et al., 1994).

29 In this study we focus on the relationship between fires and forest cover loss using newly
30 available data. We discuss and highlight the patterns seen in the forest cover loss, deforestation,
31 and burned area datasets. Our main objective is to identify the role that fires play in these

1 differences, and how droughts influence the fire – [tree cover loss](#) dynamics. We also focus on the
2 spatial and temporal variability in the use of fire as a tool for deforestation for different states
3 and land cover types.

4 **2 Datasets and Methods:**

5 Our study area is the Brazilian Legal Amazon or BLA, which consists of 9 Brazilian states in the
6 northern part of Brazil (Fig. 1). Its geographic area is approximately 5 million km². 62% of the
7 Amazon forest lies within Brazilian borders. It consists predominantly of closed tropical forest
8 but also of cerrado (wooded savanna), agriculture, and pasture land (Carreiras et al., 2006).
9 Deforestation is concentrated in the arc of deforestation along the southern and eastern edges of
10 the BLA (Fearnside, 2005). We used four satellite-derived datasets characterizing forest
11 dynamics and fire: GFC forest cover loss, PRODES deforestation, MODIS burned area, and
12 MODIS land cover. After describing these datasets in more detail, we explain what steps we
13 have taken to study relationships between the various datasets.

14 The PRODES deforestation dataset is derived from Landsat data using algorithms described by
15 Shimabukuro et al. (1998). Landsat TM bands 3, 4 and 5 are used to generate the fraction of
16 vegetation, soil, and shade within each pixel using the constrained least squares method. The
17 image fraction is then classified using image segmentation followed by unsupervised image
18 classification and image editing to determine primary forest deforestation (Valeriano et al.,
19 2004). This methodology has been used since 1997 and once an area is detected as deforested, it
20 is masked out and not considered anymore in following years.

21 GFC defines forest cover loss as a stand-replacement disturbance or the complete removal of tree
22 cover canopy for the period 2001 – 2013. GFC uses pre-processed cloud-free Landsat images to
23 calculate time series spectral metrics. Over the study interval three groups of per-band metrics
24 were employed: reflectance values, mean reflectance and slope of linear regression of band
25 reflectance value versus image date. Using these time-series metrics, a decision tree was used to
26 find forest cover loss (Hansen et al., 2013). A key difference between GFC and PRODES is that
27 PRODES only quantifies primary forest loss while GFC includes changes in “all vegetation taller
28 than 5m in height”. This may include the clearing of secondary forest or certain types of cultures
29 such as palm oil production, and in general one expects that GFC flags more area than PRODES.
30 MODIS burned area (MCD64A1) is based on 500 meter MODIS imagery coupled with 1km
31 MODIS active fire observations. It produces composite imagery to detect persistent changes and

1 then uses spatial and temporal active-fire information to create probabilistic thresholds to classify
2 each pixel as burned or unburned (Giglio et al., 2009). To identify land cover changes, we used
3 the MODIS MCD12Q1 Land cover type product version 051 (Loveland and Belward, 1997;
4 Friedl et al., 2010) with the International Global Biosphere Program (IGBP) global land cover
5 classification scheme.

6 To combine [forest cover loss](#), burned area and land cover datasets we used ArcMap10 to rescale
7 PRODES and GFC to the 500-meter MODIS grid using the most common Z value. The rescaled
8 dataset slightly overestimated the area of forest loss in the BLA by approximately 4%. However,
9 this bias was uniform over time and space, and did not change the general trend and patterns in
10 which we are interested here. We performed all analyses at 500 meter resolution and rescaled the
11 results to 0.1 degree to facilitate visual interpretation of the figures.

12 Because of the annual time step in the GFC and PRODES data, we have also merged the
13 monthly burned area data into annual files to compare that layer with deforestation and forest
14 cover loss. We have simplified the land cover classification scheme to three classes with the
15 dominant vegetation types in the BLA: Evergreen Broadleaf forest (EB), Low Tree Cover (LT,
16 which includes shrublands and savannas) and Cropland (C, including croplands interspersed with
17 natural vegetation). Other land cover type, such as grassland, needle leaf forest or permanent
18 wetland, have been merged (Other) but excluded in our analyses as they only represent a very
19 small portion of BLA land cover. [We further analysed the land use for each land cover group in
20 the two states most affected by fires: Mato Grosso and Pará. We used the Landsat-based
21 TerraClass land use dataset from INPE available for 2008 and 2010 for this exercise.](#)

22 Finally, we aimed to not only better understand how burned area and forest cover loss are
23 related, but also how frequently burned area is observed after land cover transition and whether
24 this varies between post tree cover loss land use. For each evergreen broadleaf pixel where GFC
25 indicated forest cover loss, we summed burned area occurrence during the 5 years following this
26 event. This 5 years time period was chosen to balance the number of years we had for analysis
27 (which decreases when we lengthen our time period) and the time required for conversion. The 5
28 year time window was also used by Lima et al. (2012), who showed that 15% of the fires in their
29 study area in 2005 occurred in land deforested in 2000. Shorter time periods lowers this number
30 somewhat (e.g., 3 years yields 37%) while longer time periods make a marginal difference.
31 Because our time series ended in 2012 we could only do this for 2002 through 2007. In the

1 process, we kept track of the post tree cover loss land use defined by the land cover type 5 years
2 after tree cover loss. For each year of evergreen broadleaf forest cover loss, we calculated the
3 fraction burned in the subsequent 5 years, and associated them with the initial year of tree cover
4 loss. Finally, we stratified these summed fractions by post tree loss cover type to evaluate the
5 trend of conversion.

6 **3 RESULTS:**

7 During our study period, within the BLA, both tree cover loss and burned areas were
8 concentrated along the arc of deforestation (Fig. 2). The largest difference between GFC and
9 PRODES on one hand and burned area on the other hand is that forest loss and deforestation are
10 concentrated along the edge of the Amazon forest while most fire activity is observed further
11 away from the deforestation frontier. In addition to the arc of deforestation, forest cover loss and
12 deforestation occurs along the Amazon River and close to roads. A state-level breakdown
13 indicated that Mato Grosso (both GFC and PRODES indicate 33% of the total BLA loss), Pará
14 (32% for GFC, 36% for PRODES) and Rondônia (12%, 13%) were the states with most forest
15 cover loss over our full study period. There is spatial overlap between forest cover loss /
16 deforestation and burned area, mainly in the Southeast of Pará and in Eastern Mato Grosso.
17 However, regions with more shrubland or savannas, further away from the arc of deforestation
18 (e.g. Tocantins and Maranhão) have the highest burned area.

19 Over our study period, PRODES and GFC annual forest cover loss increased up to the year 2004
20 and decreased afterwards (Fig. 3). While both datasets demonstrated this post-2004 decline, the
21 extent differed. PRODES showed a continuous decrease except for 2008, while GFC plateaued
22 towards the end of the study period at a higher level. In both datasets, all states showed a
23 decrease between 2004 (highest year of deforestation during our study) and 2012. Mato Grosso,
24 Pará and Rondônia showed the largest reduction between 2004 and 2012 in both datasets,
25 respectively 63%, 50% and 56% in GFC and, 94%, 80% and 80% with PRODES. While all other
26 states had a decrease of at least 40% according to PRODES, GFC does not show any other state
27 having more than a 30% decrease. In addition, GFC has annual peaks in forest cover loss during
28 dry years, especially in 2010, while PRODES does not show this variability in deforestation.

29 Partitioning GFC forest cover loss by land cover, we found that until 2006 most loss occurred in
30 evergreen broadleaf forests (Fig. 4a). From 2002 to 2009, the amount of annual evergreen

1 broadleaf forest loss dropped from approximately 16,000 km² to almost 5,000 km² and stayed
2 relatively constant in the following years. The most significant decrease came from Mato Grosso
3 and Rondônia with an absolute forest cover loss reduction in evergreen broadleaf forests of 93%
4 and 81% respectively (Fig. 4b). The decrease in forest cover loss started earlier in Mato Grosso
5 (in 2004) than in Rondônia (in 2005) probably related to the strong 2005 drought, which was
6 most prominent in the western BLA. The state with on average the second highest amount of
7 forest cover loss, Pará, showed a slower diminution in evergreen broadleaf forest loss (60%).
8 Total loss in other types of land cover remained relatively stable during our study period (Fig.
9 4c-d). Mato Grosso is the only state with a significant decrease in clearing in the low tree cover
10 biome, halving the amount of shrubland and savannas cleared between 2004 and 2012.

11 In contrast to these trends in deforestation and forest cover loss, total burned area remained
12 relatively stable over our study period except in drier years, such as 2007 and 2010, when burned
13 area increased markedly, especially in low tree vegetation. These peaks mainly occurred in
14 southern and eastern states such as Mato Grosso, Pará, Maranhão and Tocantins (Fig. 5a,b). [In](#)
15 [2008, pastures as classified by TerraClass covered 15% of Mato Grosso's and 12% of Pará's](#)
16 [surface. For a large part, pastures overlapped with our low tree cover class \(80% and 65% of the](#)
17 [pastures were in that class for those two states\). In Mato Grosso pasture fires represented only](#)
18 [7% of all burned area in 2008 and 9% in 2010, while most fires occurred in unmanaged land use](#)
19 [\(respectively 86% and 87%\). In Pará, pasture fires comprised 19% and 34% of the burned area in](#)
20 [2008 and 2010, also much lower than burned area in unmanaged areas \(69% to 56%\).](#)

21 Focusing on burned area coinciding with GFC forest cover loss (so observed in the same grid
22 cell in the same year), we found that they occur mainly in evergreen broadleaf forest and that this
23 is only a small fraction of the total burned area in the BLA (Fig. 5c,d). The general trend is
24 similar to total GFC although the decrease starts after 2005 due to a drought in the southwest of
25 the BLA, mainly in Acre and Amazonas. Looking into more detail at 4 years (2004, 2005, 2007
26 and 2010) with more tree cover loss and/or fire activity, we found that the spatial distribution of
27 coinciding forest cover loss and burning has changed (Fig. 6). Especially in 2004 but also in
28 2005, most of this was observed in northern Mato Grosso and Rondônia. These regions featured
29 less prominently in latter part of this analysis during the dry years of 2007 and 2010. In contrast,
30 Pará had very low fire activity in 2004, but started to have a major hotspot in the southeast in
31 2005 and in following dry years. The central region of Pará had also more activity from 2005

1 onwards. Maranhão and Tocantins have little remaining primary forest but the use of fire in the
2 process of clearing other vegetation above 5m of height has increased during our study period.

3 Using burned area and GFC to evaluate the time interval between forest cover loss and fire we
4 found that a substantial part (46% when averaged over the full study period) of cleared evergreen
5 broadleaf forest was burned within 5 years after forest cover loss, with the use of fire decreasing
6 over time. 24.5% was converted to shrubland or savannas, 18% was converted to cropland and
7 the remaining 3.5% had no permanent conversion (Fig. 7). We also found that 10% of the land
8 converted to shrubland or savanna was burned the same year as forest cover loss was detected in
9 these grid cells (we could not identify whether it was the cause of conversion), while conversions
10 to cropland were burned in the first year in about 7.5% of the grid cells. Grid cells identified as
11 forest cover loss but remaining evergreen broadleaf forest had little burned area, between 0-2%.

12 Strikingly, when looking at the temporal trend of burned area after evergreen broadleaf GFC
13 loss, we found that the use of fire after conversions to shrubland, savannas or cropland decreased
14 over our study period (Fig. 8). The fraction that burned after conversion to shrubland or savannas
15 decreased from over 31% between 2002 and 2007 to 17% between 2007 and 2012. Combining
16 all conversion types, post tree cover loss fire was most frequent for the grid cells that had forest
17 loss in 2003 where 60% burned in the following 5 years, decreasing to 29% for 2006, and
18 increasing again to 39% in 2007. This trend came mainly from converted lands. In the grid cells
19 without permanent conversion the use of fire actually increased somewhat (Fig. 8)

20 **4 Discussion**

21 Multiple lines of evidence demonstrate the successful decrease of deforestation within the BLA
22 under the 2004 Action Plan for the Prevention and Control of Deforestation in the Legal
23 Amazon. This plan introduced innovative procedures for monitoring, environmental control and
24 territorial management (Assunção et al., 2012). In the same year, the collaboration between
25 INPE and the Center for Environment Monitoring (CEMAM) from the Brazilian institute of
26 environment and renewable natural resources (IBAMA), created the System for Detection of
27 Deforested areas in Real Time (DETER). This new program generated maps of areas with
28 critical forest cover changes in near real time which proved to be an important tool for law
29 enforcement (May et al., 2011). In both datasets used in this study, the post-2004 drop in tree
30 cover loss and deforestation can be clearly identified. According to GFC, the resulting downward

1 trend is mainly occurring in states within the arc of deforestation. In 2006, the soy moratorium
2 was implemented to prohibit the trade of soybean produced in deforested areas (Meyfroidt and
3 Lambin, 2011). After 5 year of application, Rudorff et al. (2011) concluded that although it was
4 premature to attribute the decrease in deforestation in the Amazon biome to this moratorium, it
5 had undoubtedly created an inhibitory effect on the expansion of soybean in this biome. After
6 this moratorium, 90% of the soybean plantation expansion occurred on land previously used as
7 rangeland (Lapola et al., 2010). In the future, the Brazilian government is willing to significantly
8 increase the production of biofuel (Bergmann et al., 2013). One consequence could be the
9 migration of cattle ranchers to other regions and thereby increasing deforestation (Nepstad et al.,
10 2006). According to GFC, forest cover loss ceased to decrease shortly after the implementation
11 of this moratorium. This study cannot connect these two facts, but one hypothesis could be that
12 more non-primary forest has been cleared to allow the soybean extension or the resettlement of
13 cattle ranchers without breaching the moratorium agreements.

14 Pará ranked second with regard to forest cover loss and deforestation in 2002, behind Mato
15 Grosso. Mato Grosso drastically reduced its tree clearing rates, and so did Pará but to a lesser
16 extent. Mato Grosso had only 44% of its state covered by evergreen broadleaf forest in 2002
17 compared to 80% for Pará. The availability of land accessible to clear may explain part of the
18 difference in absolute trend strength. We observed that some regions in Pará that were not
19 substantially impacted by clearing fires early in our study period became hotspots towards the
20 end. For example, in the region of Tucumã in central Pará, fire and clearing were not collocated
21 in 2004, but became really active in 2005, 2007 and 2010. A highly fragmented forest region
22 may potentially explain this, as a close access to the Rio Xingu, tributary of the Amazon River,
23 facilitates tree removal. Further north in Pará, we noted that strong tree cover loss was occurring
24 without burned area being observed. This could be due to higher annual rainfall, which can limit
25 the use of fire in forest clearing.

26 During our study period, the BLA faced severe drought years in 2005, 2007 and 2010. According
27 to PRODES, these events did not influence the rate of deforestation, except in 2008 when there
28 was a small increase possibly related to the 2007 drought. GFC shows more sensitivity to
29 droughts. This is most evident in 2010 when there was an increase in forest cover loss compared
30 to the previous year, the first time since 2004. But also 2005 and 2007 showed less of a decline
31 compared to the previous year in GFC than in PRODES. These dry years had also a significant

1 effect on fire in southern and western states. Maranhão and Tocantins had a very strong burning
2 peak, but this did not influence forest cover loss, probably because savannas are by far the
3 dominant land cover here. On the other hand, Mato Grosso and Pará have also seen elevated
4 burning activity increasing the burning of evergreen broadleaf forest, which could explain part of
5 GFC plateau towards the end of our study period.

6 Previous work has shown a strong correlation between deforestation and fire occurrences
7 (Aragão et al., 2008; Chen et al., 2013). Although deforestation and forest cover loss have
8 declined sharply since 2004, burned area did not follow this trend because only a small fraction
9 of burned area is associated with forest cover loss and because droughts have a strong impact on
10 the inter-annual variability in burned area. Although the effects of droughts are not uniform
11 between all states, general impacts are evident. Burned area always exceeded forest cover loss
12 area due to the fact that fires in grassland and on agricultural grounds are not part of
13 deforestation or forest cover loss. States with a relatively small fraction of evergreen broadleaf
14 forest but a larger portion of cerrado (low tree cover), such as Mato Grosso, Tocantins and
15 Maranhão have in general more fire activity in the conversion to agriculture or grazing process
16 (Mistry, 1998). [In Mato Grosso and Pará, we found that relatively speaking, less burned area in
17 our low tree cover class occurred in pastures compared to non-managed land. This indicates that
18 management in general decreases burned area.](#)

19 Our results on time intervals between forest cover loss and burned area show that although large
20 fire years occurred throughout our study period, the overall rate of burned area per unit
21 deforested land is decreasing. Over our study period the post-conversion use of fire decreased.
22 About 54% of the evergreen broadleaf forest that was cleared in 2002 burned in the following 5
23 years, dropping to 29% for the evergreen broadleaf forest cleared in 2006. 2007 was a dry year,
24 the second highest fire year during our study period. We have shown that most fires occur in the
25 same year as tree cover loss. Longer time series will enable us to see whether the increase in
26 post-forest loss fire use in 2007 was a temporary result because of the drought or that the
27 downward trend is increasing again. Lima et al. (2012) showed in one Landsat 5 TM tile located
28 between Rondônia and Mato Grosso that 53% of the 2005 fires occurred in land deforested
29 within the prior 5 years. Aragão and Shimabukuro (2010), however, found that between 2000
30 and 2007, 59% of areas experiencing reduction in deforestation rates had an increase in fire
31 events. Using 0.25-degree spatial resolution, they explain that this reverse trend could come from

1 secondary forest clearing, not detected by PRODES. We demonstrated that within the same time
2 period, more than half of the cleared vegetation taller than 5m in height, was burned within a few
3 years, dropping below 40% after 2004.

4 By combining the three different datasets we have aimed not only to understand the differences
5 between them, but also to highlight uncertainties associated with relying on one dataset. [Our
6 study shows that, at least for the Brazilian Amazon, secondary forest loss and fire dynamics
7 outside the tropical forest domain may be equally important in regulating atmospheric CO2
8 concentrations.](#) The exact impact of these processes requires taking into account the biomass
9 density (e.g., Baccini et al. (2012)) , which will be the subject of a follow-up study. These types
10 of fires are also important in other regions outside the BLA (e.g. Chen et al., 2014) and
11 expanding the current focus on deforestation regions to also include woodland dynamics may be
12 an important step in better understanding biosphere-atmosphere interactions and biodiversity
13 issues. For example, large scale carbon budget studies often use deforestation rates in their
14 assessments of sources and sinks of carbon (Le Quéré et al., 2013).

15 One key uncertainty we have not addressed here is the use of burned area to study fire extent.
16 The burned area algorithms are often geared towards detecting relatively large fires and not all
17 fires in tree cover loss or deforestation zones may be flagged as burned by them. In addition, it is
18 not well known how reliable the burned area data is in tree cover loss or deforestation regions.
19 [The use of active fires instead of or in combination with burned area may mitigate some of these
20 issues \(Randerson et al., 2012\). However, these approaches rely on statistics between active fires
21 and burned area that can only be derived from coarse scale analyses; in the study by Randerson
22 et al. \(2012\) a 0.25 degree spatial resolution was used which is far too coarse for our purposes.
23 On native resolution, active fires are still 4 times coarser than burned area but the key issue is
24 that active fires can be associated both with a small agricultural burn in the grid cell and with a
25 large fire consuming all biomass in the grid cell. Because of this lack of quantitative information
26 we refrained from using active fires.](#) In the future, higher resolution observations from for
27 example VIIRS (Schroeder et al., 2014) may enable simultaneous use of burned area and active
28 fires in native resolution applications like ours.

1 **5 Conclusions**

2 We used satellite observation of deforestation (PRODES), forest cover loss (GFC), burned area
3 (MCD64A1) and land cover (MCD12Q1) between 2002 and 2012 in the Brazilian Legal
4 Amazon (BLA) to study relationships between the different datasets. The PRODES dataset
5 indicated that deforestation has sharply declined since 2004, something also seen in the GFC
6 forest cover loss data but to a smaller extent. The states with the strongest decline were in the
7 south of the BLA. Most tree cover loss and deforestation occurred on the edge of the Amazon
8 forest while more burned area were located on the outskirts of the arc of deforestation. Looking at
9 coinciding forest cover loss and burned area, we found variability in the spatial distribution
10 during our study period. This was most predominantly found in the state of Pará, where burned
11 area and forest cover loss were not linked in 2004, which changed later when large patches of
12 burned area coinciding with forest cover loss were observed in the southwest and the centre of
13 the state during the dry years of 2007 and 2010. This indicates that droughts not only enhance
14 burned area, but also increase forest cover loss in for example [secondary forests](#). These are not
15 necessarily monitored by PRODES, which excludes grid cells that have been deforested before,
16 and are not always included in large-scale carbon cycle studies such as those from the Global
17 Carbon Project (Le Quéré et al., 2015).

18 Early in our study period, more than 50% of cleared evergreen broadleaf forest was burned
19 throughout the subsequent 5 years, reducing below 40% during the last time segment studied
20 (2007-2012). [In other words, besides the well-documented decrease in deforestation rates we](#)
21 [also showed that burned area in deforested and degraded area decreased over our study period.](#)
22 More research is required to better understand these dynamics; one potential reason could be that
23 with lower deforestation rates the deforested lands are becoming more intensively managed, [and](#)
24 [we have shown that in Mato Grosso and Pará burned area in unmanaged land is in average 5](#)
25 [times more frequent than in managed pasture.](#)

26 **Acknowledgements**

27 We acknowledge NASA, INPE, and Matthew Hansen for making their data publicly available.
28 This research was supported by the European Research Council, grant number 280061.

1 **References:**

- 2 Aragão, L. E. O., Malhi, Y., Roman-Cuesta, R. M., Saatchi, S., Anderson, L. O., and
3 Shimabukuro, Y. E.: Spatial patterns and fire response of recent Amazonian droughts,
4 *Geophysical Research Letters*, 34, doi: 10.1029/2006GL028946, 2007.
- 5 Aragão, L. E. O. C., Malhi, Y., Barbier, N., Lima, A., Shimabukuro, Y., Anderson, L., and
6 Saatchi, S.: Interactions between rainfall, deforestation and fires during recent years in the
7 Brazilian Amazonia, *Philosophical Transactions of the Royal Society B: Biological Sciences*,
8 363, 1779-1785, doi: 10.1098/rstb.2007.0026, 2008.
- 9 Aragão, L. E. O. C., and Shimabukuro, Y. E.: The Incidence of Fire in Amazonian Forests with
10 Implications for REDD, *Science*, 328, 1275-1278, 10.1126/science.1186925, 2010.
- 11 Assunção, J., Gandour, C. C., and Rocha, R.: Deforestation slowdown in the Legal Amazon:
12 prices or policies, *Climate Policy Initiative Working Paper*, 2012.
- 13 Baccini, A., Goetz, S. J., Walker, W. S., Laporte, N. T., Sun, M., Sulla-Menashe, D., Hackler, J.,
14 Beck, P. S. A., Dubayah, R., Friedl, M. A., Samanta, S., and Houghton, R. A.: Estimated carbon
15 dioxide emissions from tropical deforestation improved by carbon-density maps, *Nature Clim.*
16 *Change*, 2, 182-185, <http://www.nature.com/nclimate/journal/v2/n3/abs/nclimate1354.html> -
17 [supplementary-information](#), 2012.
- 18 Balch, J., Nepstad, D., and Curran, L.: Pattern and process: Fire-initiated grass invasion at
19 Amazon transitional forest edges, in: *Tropical Fire Ecology*, Springer Praxis Books, Springer
20 Berlin Heidelberg, 481-502, 2009.
- 21 Bergmann, J. C., Tupinambá, D. D., Costa, O. Y. A., Almeida, J. R. M., Barreto, C. C., and
22 Quirino, B. F.: Biodiesel production in Brazil and alternative biomass feedstocks, *Renewable and*
23 *Sustainable Energy Reviews*, 21, 411-420, doi: 10.1016/j.rser.2012.12.058, 2013.
- 24 Broadbent, E. N., Asner, G. P., Keller, M., Knapp, D. E., Oliveira, P. J. C., and Silva, J. N.:
25 Forest fragmentation and edge effects from deforestation and selective logging in the Brazilian
26 Amazon, *Biological Conservation*, 141, 1745-1757, doi: 10.1016/j.biocon.2008.04.024, 2008.
- 27 Broich, M., Stehman, S. V., Hansen, M. C., Potapov, P., and Shimabukuro, Y. E.: A comparison
28 of sampling designs for estimating deforestation from Landsat imagery: A case study of the
29 Brazilian Legal Amazon, *Remote Sensing of Environment*, 113, 2448-2454, doi:
30 10.1016/j.rse.2009.07.011, 2009.
- 31 Bustamante, M. M., Nobre, C. A., Smeraldi, R., Aguiar, A. P., Barioni, L. G., Ferreira, L. G.,
32 Longo, K., May, P., Pinto, A. S., and Ometto, J. P.: Estimating greenhouse gas emissions from
33 cattle raising in Brazil, *Climatic change*, 115, 559-577, doi: 10.1007/s10584-012-0443-3, 2012.
- 34 Carreiras, J. M. B., Pereira, J. M. C., and Shimabukuro, Y. E.: Land-cover Mapping in the
35 Brazilian Amazon Using SPOT-4 Vegetation Data and Machine Learning Classification
36 Methods, *Photogrammetric Engineering & Remote Sensing*, 72, 897-910, doi:
37 10.14358/pers.72.8.897, 2006.
- 38 Chen, Y., Randerson, J. T., Morton, D. C., DeFries, R. S., Collatz, G. J., Kasibhatla, P. S.,
39 Giglio, L., Jin, Y., and Marlier, M. E.: Forecasting Fire Season Severity in South America Using
40 Sea Surface Temperature Anomalies, *Science*, 334, 787-791, doi: 10.1126/science.1209472,
41 2011.
- 42 Chen, Y., Morton, D. C., Jin, Y., Collatz, G. J., Kasibhatla, P. S., van der Werf, G. R., DeFries,
43 R. S., and Randerson, J. T.: Long-term trends and interannual variability of forest, savanna and
44 agricultural fires in South America, *Carbon Management*, 4, 617-638, doi: 10.4155/cmt.13.61,
45 2013.

1 Cochran, M. A., and Laurance, W. F.: Synergisms among Fire, Land Use, and Climate Change
2 in the Amazon, *AMBIO: A Journal of the Human Environment*, 37, 522-527, doi: 10.1579/0044-
3 7447-37.7.522, 2008.

4 de Almeida, C. A., Pinheiro, T. F., Barbosa, A. M., de Abreu, M. R. B. S., de Lucia Lobo, F.,
5 Silva, M., Gomes, A. R., Sadeck, L. W. R., de Medeiros, L. T. B., and Neves, M. F.:
6 Metodologia para mapeamento de vegetação secundária na Amazônia Legal, doi: INPE-16621-
7 RPQ/839, 2009.

8 Fearnside, P. M.: Deforestation in Brazilian Amazonia: History, Rates, and Consequences,
9 *Conservation Biology*, 19, 680-688, doi: 10.1111/j.1523-1739.2005.00697.x, 2005.

10 Fearnside, P. M., Righi, C. A., Graça, P. M. L. d. A., Keizer, E. W. H., Cerri, C. C., Nogueira, E.
11 M., and Barbosa, R. I.: Biomass and greenhouse-gas emissions from land-use change in Brazil's
12 Amazonian "arc of deforestation": The states of Mato Grosso and Rondônia, *Forest Ecology and*
13 *Management*, 258, 1968-1978, doi: 10.1016/j.foreco.2009.07.042, 2009.

14 Friedl, M. A., Sulla-Menashe, D., Tan, B., Schneider, A., Ramankutty, N., Sibley, A., and
15 Huang, X.: MODIS Collection 5 global land cover: Algorithm refinements and characterization
16 of new datasets, *Remote Sensing of Environment*, 114, 168-182, doi: 10.1016/j.rse.2009.08.016,
17 2010.

18 Giglio, L., Desloîtres, J., Justice, C. O., and Kaufman, Y. J.: An Enhanced Contextual Fire
19 Detection Algorithm for MODIS, *Remote Sensing of Environment*, 87, 273-282, doi:
20 10.1016/S0034-4257(03)00184-6, 2003.

21 Giglio, L., Loboda, T., Roy, D. P., Quayle, B., and Justice, C. O.: An active-fire based burned
22 area mapping algorithm for the MODIS sensor, *Remote Sensing of Environment*, 113, 408-420,
23 doi: 10.1016/j.rse.2008.10.006, 2009.

24 Hansen, M. C., Shimabukuro, Y. E., Potapov, P., and Pittman, K.: Comparing annual MODIS
25 and PRODES forest cover change data for advancing monitoring of Brazilian forest cover,
26 *Remote Sensing of Environment*, 112, 3784-3793, doi: 10.1016/j.rse.2008.05.012, 2008.

27 Hansen, M. C., Potapov, P. V., Moore, R., Hancher, M., Turubanova, S. A., Tyukavina, A.,
28 Thau, D., Stehman, S. V., Goetz, S. J., Loveland, T. R., Kommareddy, A., Egorov, A., Chini, L.,
29 Justice, C. O., and Townshend, J. R. G.: High-Resolution Global Maps of 21st-Century Forest
30 Cover Change, *Science*, 342, 850-853, doi: 10.1126/science.1244693, 2013.

31 Holdsworth, A. R., and Uhl, C.: Fire in Amazonian selectively logged rain forest and the
32 potential for fire reduction, *Ecological Applications*, 7, 713-725, doi: 10.1890/1051-
33 0761(1997)007[0713:fiaslr]2.0.co;2, 1997.

34 INPE: http://www.obt.inpe.br/prodes/prodes_1988_2013.htm, 2014.

35 IPCC: Climate change 2007: the physical science basis. In: Contribution of Working Group I to
36 the Fourth Assessment Report of the Intergovernmental Panel on Climate Change (eds Solomon
37 S., Qin D., Manning M., Chen Z., Marquis M., Averyt K. B., Tignor M., Miller H.L.), Cambridge
38 University Press 2007 Cambridge, UK and New York, NY, USA, 996 pp., 2007.

39 Johns, J. S., Barreto, P., and Uhl, C.: Logging damage during planned and unplanned logging
40 operations in the eastern Amazon, *Forest Ecology and Management*, 89, 59-77, doi:
41 10.1016/S0378-1127(96)03869-8, 1996.

42 Kirby, K. R., Laurance, W. F., Albernaz, A. K., Schroth, G., Fearnside, P. M., Bergen, S.,
43 Venticinque, E. M., and da Costa, C.: The future of deforestation in the Brazilian Amazon,
44 *Futures*, 38, 432-453, doi: 10.1016/j.futures.2005.07.011, 2006.

1 Lapola, D. M., Schaldach, R., Alcamo, J., Bondeau, A., Koch, J., Koelking, C., and Priess, J. A.:
2 Indirect land-use changes can overcome carbon savings from biofuels in Brazil, *Proceedings of*
3 *the National Academy of Sciences*, 107, 3388-3393, doi: 10.1073/pnas.0907318107, 2010.

4 Le Quéré, C., Andres, R. J., Boden, T., Conway, T., Houghton, R. A., House, J. I., Marland, G.,
5 Peters, G. P., van der Werf, G. R., Ahlström, A., Andrew, R. M., Bopp, L., Canadell, J. G., Ciais,
6 P., Doney, S. C., Enright, C., Friedlingstein, P., Huntingford, C., Jain, A. K., Jourdain, C., Kato,
7 E., Keeling, R. F., Klein Goldewijk, K., Levis, S., Levy, P., Lomas, M., Poulter, B., Raupach, M.
8 R., Schwinger, J., Sitch, S., Stocker, B. D., Viovy, N., Zaehle, S., and Zeng, N.: The global
9 carbon budget 1959–2011, *Earth Syst. Sci. Data*, 5, 165-185, doi: 10.5194/essd-5-165-2013,
10 2013.

11 Le Quéré, C., Moriarty, R., Andrew, R. M., Peters, G. P., Ciais, P., Friedlingstein, P., Jones, S.
12 D., Sitch, S., Tans, P., Arneeth, A., Boden, T. A., Bopp, L., Bozec, Y., Canadell, J. G., Chini, L.
13 P., Chevallier, F., Cosca, C. E., Harris, I., Hoppema, M., Houghton, R. A., House, J. I., Jain, A.
14 K., Johannessen, T., Kato, E., Keeling, R. F., Kitidis, V., Klein Goldewijk, K., Koven, C., Landa,
15 C. S., Landschützer, P., Lenton, A., Lima, I. D., Marland, G., Mathis, J. T., Metzl, N., Nojiri, Y.,
16 Olsen, A., Ono, T., Peng, S., Peters, W., Pfeil, B., Poulter, B., Raupach, M. R., Regnier, P.,
17 Rödenbeck, C., Saito, S., Salisbury, J. E., Schuster, U., Schwinger, J., Séférian, R., Segschneider,
18 J., Steinhoff, T., Stocker, B. D., Sutton, A. J., Takahashi, T., Tilbrook, B., van der Werf, G. R.,
19 Viovy, N., Wang, Y. P., Wanninkhof, R., Wiltshire, A., and Zeng, N.: Global carbon budget
20 2014, *Earth Syst. Sci. Data*, 7, 47-85, 10.5194/essd-7-47-2015, 2015.

21 Lewis, S. L., Brando, P. M., Phillips, O. L., van der Heijden, G. M. F., and Nepstad, D.: The
22 2010 Amazon Drought, *Science*, 331, 554, doi: 10.1126/science.1200807, 2011.

23 Lima, A., Silva, T. S. F., Aragão, L. E. O. e. C. d., Feitas, R. M. d., Adami, M., Formaggio, A.
24 R., and Shimabukuro, Y. E.: Land use and land cover changes determine the spatial relationship
25 between fire and deforestation in the Brazilian Amazon, *Applied Geography*, 34, 239-246, doi:
26 10.1016/j.apgeog.2011.10.013, 2012.

27 Loveland, T. R., and Belward, A. S.: The IGBP-DIS global 1km land cover data set, DISCover:
28 First results, *International Journal of Remote Sensing*, 18, 3289-3295, doi:
29 10.1080/014311697217099, 1997.

30 Malhi, Y., Aragão, L. E. O. C., Galbraith, D., Huntingford, C., Fisher, R., Zelazowski, P., Sitch,
31 S., McSweeney, C., and Meir, P.: Exploring the likelihood and mechanism of a climate-change-
32 induced dieback of the Amazon rainforest, *Proceedings of the National Academy of Sciences*,
33 106, 20610-20615, doi: 10.1073/pnas.0804619106, 2009.

34 Marengo, J. A., Nobre, C. A., Tomasella, J., Oyama, M. D., Sampaio de Oliveira, G., de
35 Oliveira, R., Camargo, H., Alves, L. M., and Brown, I. F.: The Drought of Amazonia in 2005,
36 *Journal of Climate*, 21, 495-516, doi: 10.1175/2007jcli1600.1, 2008.

37 May, P. H., Millikan, B., and Gebara, M. F.: The context of REDD+ in Brazil: Drivers, agents
38 and institutions, *CIFOR*, doi: 10.17528/cifor/003287, 2011.

39 Meyfroidt, P., and Lambin, E. F.: Global Forest Transition: Prospects for an End to
40 Deforestation, *Annual Review of Environment and Resources*, 36, 343-371, doi:
41 10.1146/annurev-environ-090710-143732, 2011.

42 Mistry, J.: Fire in the cerrado (savannas) of Brazil: an ecological review, *Progress in Physical*
43 *Geography*, 22, 425-448, doi: 10.1177/030913339802200401, 1998.

44 Morton, D. C., DeFries, R. S., Shimabukuro, Y. E., Anderson, L. O., Del Bon Espírito-Santo, F.,
45 Hansen, M., and Carroll, M.: Rapid Assessment of Annual Deforestation in the Brazilian
46 Amazon Using MODIS Data, *Earth Interactions*, 9, 1-22, doi: 10.1175/ei139.1, 2005.

1 Morton, D. C., DeFries, R. S., Shimabukuro, Y. E., Anderson, L. O., Arai, E., del Bon Espirito-
2 Santo, F., Freitas, R., and Morissette, J.: Cropland expansion changes deforestation dynamics in
3 the southern Brazilian Amazon, *Proceedings of the National Academy of Sciences*, 103, 14637-
4 14641, doi: 10.1073/pnas.0606377103, 2006.

5 Morton, D. C., Defries, R. S., Randerson, J. T., Giglio, L., Schroeder, W., and Van Der Werf, G.
6 R.: Agricultural intensification increases deforestation fire activity in Amazonia, *Global Change*
7 *Biology*, 14, 2262-2275, doi: 10.1111/j.1365-2486.2008.01652.x, 2008.

8 Nepstad, D., Carvalho, G., Cristina Barros, A., Alencar, A., Paulo Capobianco, J., Bishop, J.,
9 Moutinho, P., Lefebvre, P., Lopes Silva Jr, U., and Prins, E.: Road paving, fire regime feedbacks,
10 and the future of Amazon forests, *Forest Ecology and Management*, 154, 395-407, doi:
11 10.1016/S0378-1127(01)00511-4, 2001.

12 Nepstad, D. C., de Carvalho, C. R., Davidson, E. A., Jipp, P. H., Lefebvre, P. A., Negreiros, G.
13 H., da Silva, E. D., Stone, T. A., Trumbore, S. E., and Vieira, S.: The role of deep roots in the
14 hydrological and carbon cycles of Amazonian forests and pastures, *Nature*, 372, 666-669, doi:
15 10.1038/372666a0, 1994.

16 Nepstad, D. C., Stickler, C. M., and Almeida, O. T.: Globalization of the Amazon Soy and Beef
17 Industries: Opportunities for Conservation, *Conservation Biology*, 20, 1595-1603, doi:
18 10.1111/j.1523-1739.2006.00510.x, 2006.

19 Nobre, C. A., Sellers, P. J., and Shukla, J.: Amazonian Deforestation and Regional Climate
20 Change, *Journal of Climate*, 4, 957-988, doi: 10.1175/1520-
21 0442(1991)004<0957:adarcc>2.0.co;2, 1991.

22 Olander, L. P., Gibbs, H. K., Steininger, M., Swenson, J. J., and Murray, B. C.: Reference
23 scenarios for deforestation and forest degradation in support of REDD: a review of data and
24 methods, *Environmental Research Letters*, 3, 025011, doi: 10.1088/1748-9326/3/2/025011,
25 2008.

26 Osborne, P.: *Tropical Ecosystems and Ecological Concepts*, edited by: Press, C. U., Cambridge,
27 UK, 2000.

28 Randerson, J. T., Chen, Y., van der Werf, G. R., Rogers, B. M., and Morton, D. C.: Global
29 burned area and biomass burning emissions from small fires, *Journal of Geophysical Research:*
30 *Biogeosciences*, 117, G04012, doi: 10.1029/2012jg002128, 2012.

31 Roy, D. P., Boschetti, L., Justice, C. O., and Ju, J.: The collection 5 MODIS burned area product
32 — Global evaluation by comparison with the MODIS active fire product, *Remote Sensing of*
33 *Environment*, 112, 3690-3707, doi: 10.1016/j.rse.2008.05.013, 2008.

34 Rudorff, B. F. T., Adami, M., Aguiar, D. A., Moreira, M. A., Mello, M. P., Fabiani, L., Amaral,
35 D. F., and Pires, B. M.: The Soy Moratorium in the Amazon Biome Monitored by Remote
36 Sensing Images, *Remote Sensing*, 3, 185-202, doi: 10.3390/rs3010185, 2011.

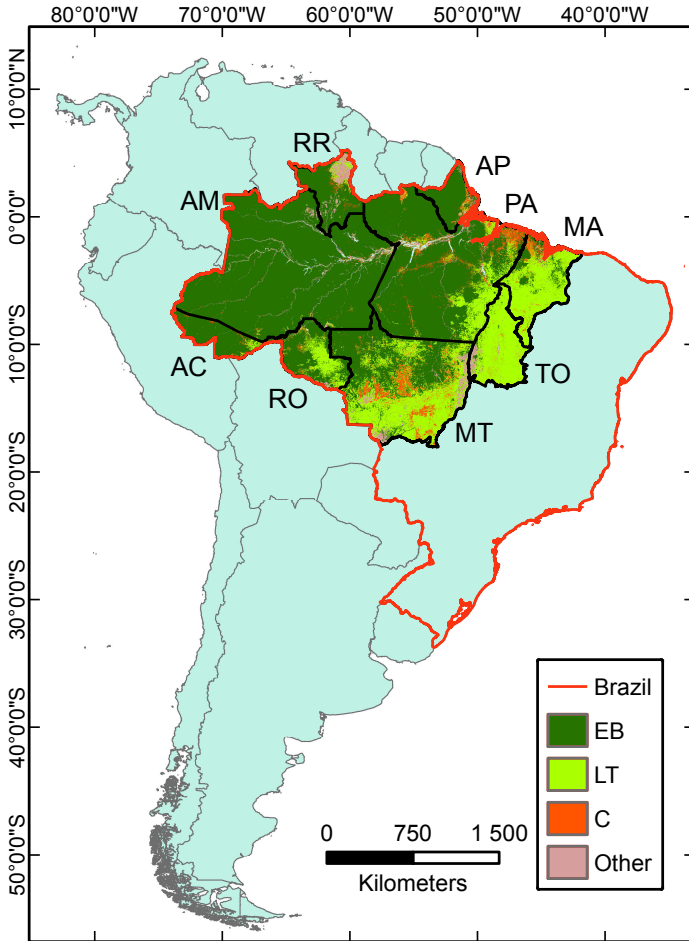
37 Schroeder, W., Oliva, P., Giglio, L., and Csizar, I. A.: The New VIIRS 375m active fire
38 detection data product: Algorithm description and initial assessment, *Remote Sensing of*
39 *Environment*, 143, 85-96, doi: 10.1016/j.rse.2013.12.008, 2014.

40 Shimabukuro, Y. E., Batista, G. T., Mello, E. M. K., Moreira, J. C., and Duarte, V.: Using shade
41 fraction image segmentation to evaluate deforestation in Landsat Thematic Mapper images of the
42 Amazon Region, *International Journal of Remote Sensing*, 19, 535-541, doi:
43 10.1080/014311698216152, 1998.

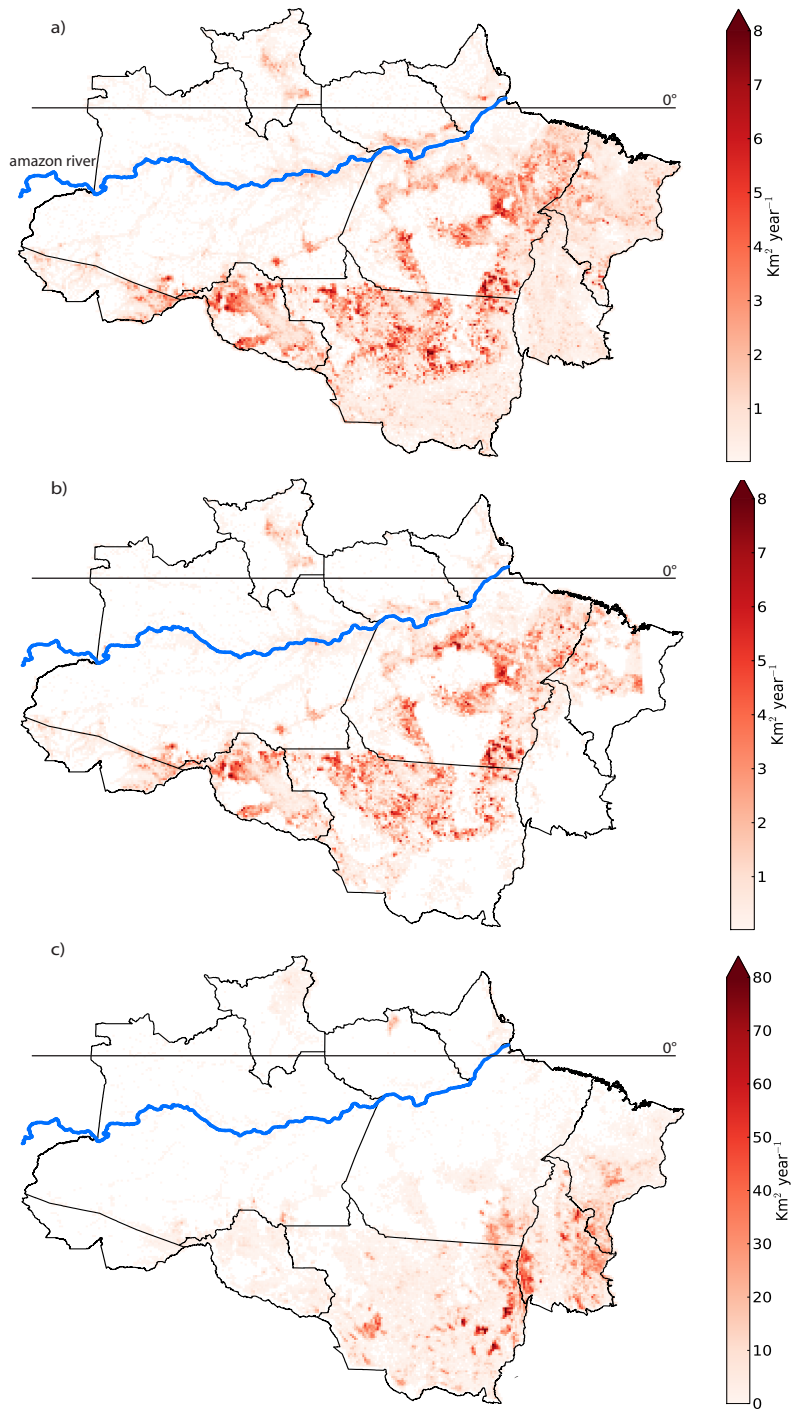
44 Tinker, P. B., Ingram, J. S. I., and Struwe, S.: Effects of slash-and-burn agriculture and
45 deforestation on climate change, *Agriculture, Ecosystems & Environment*, 58, 13-22, doi:
46 10.1016/0167-8809(95)00651-6, 1996.

1 Tucker, C. J., Grant, D. M., and Dykstra, J. D.: NASA's Global Orthorectified Landsat Data Set,
2 Photogrammetric Engineering & Remote Sensing, 70, 313-322, doi: 10.14358/pers.70.3.313,
3 2004.
4 UNFCCC: Background paper for the workshop on reducing emissions from deforestation in
5 developing countries, August 2006, Rome, Italy. Part I. Scientific, socio-economic, technical and
6 methodological issues related to deforestation in developing countries, Working paper No.1 (a),
7 2006.
8 Valeriano, D. M., Mello, E. M. K., Moreira, J. C., Shimabukuro, Y. E., and Duarte, V.:
9 Monitoring tropical forest from space: the PRODES digital project, International Archives of
10 Photogrammetry Remote Sensing and Spatial Information Sciences, 35, pp. 272–274, 2004.
11 van der Werf, G. R., Dempewolf, J., Trigg, S. N., Randerson, J. T., Kasibhatla, P. S., Giglio, L.,
12 Murdiyarso, D., Peters, W., Morton, D. C., Collatz, G. J., Dolman, A. J., and DeFries, R. S.:
13 Climate regulation of fire emissions and deforestation in equatorial Asia, Proceedings of the
14 National Academy of Sciences, 105, 20350-20355, doi: 10.1073/pnas.0803375105, 2008.
15 van der Werf, G. R., Morton, D. C., DeFries, R. S., Giglio, L., Randerson, J. T., Collatz, G. J.,
16 and Kasibhatla, P. S.: Estimates of fire emissions from an active deforestation region in the
17 southern Amazon based on satellite data and biogeochemical modelling, Biogeosciences, 6, 235-
18 249, doi: 10.5194/bg-6-235-2009, 2009.
19 Van Nieuwstadt, M. G. L., Sheil, D., and Kartawinata, K.: The Ecological Consequences of
20 Logging in the Burned Forests of East Kalimantan, Indonesia, Conservation Biology, 15, 1183-
21 1186, doi: 10.1046/j.1523-1739.2001.0150041183.x, 2001.

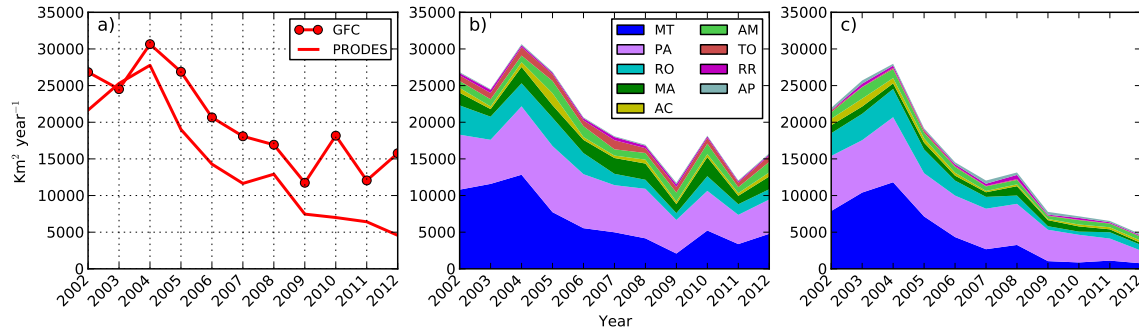
22



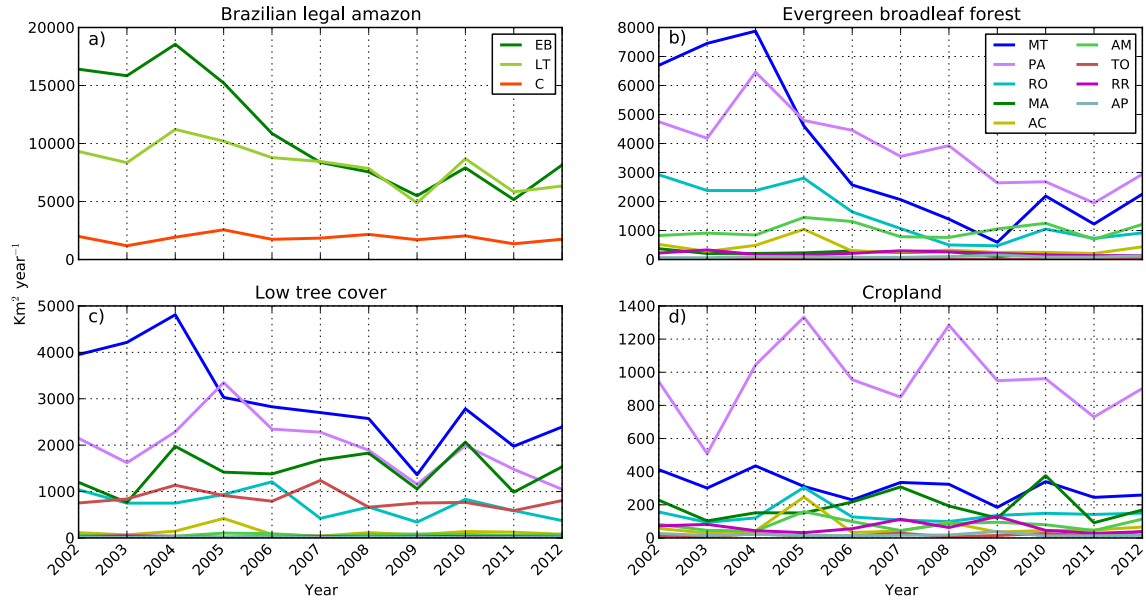
1
 2 Figure 1: MODIS MCD12Q1 (v051) Land cover in the Brazilian Legal Amazon (BLA). EB =
 3 Evergreen Broadleaf forest, LT = Low Tree cover (shrubland and savannas) and C = Cropland
 4 and Cropland/Natural Vegetation Mosaic. Other includes all remaining land cover such as
 5 grassland, needle leaf forest, permanent wetlands or urban areas. Letter codes for the states in the
 6 BLA are clockwise: AP, Amapá; PA, Pará; MA, Maranhão; TO, Tocantins; MT, Mato Grosso;
 7 RO, Rondônia; AC, Acre; AM, Amazonas; RR, Roraima.
 8



1
 2 Figure 2: 2002-2012 mean forest loss (a, based on GFC), deforestation (b, based on PRODES),
 3 and burned area (c, based on MCD64A1). All data sets are regridded to 0.1° resolution. Note the
 4 order of magnitude difference between forest loss and deforestation one hand and burned area on
 5 the other hand.

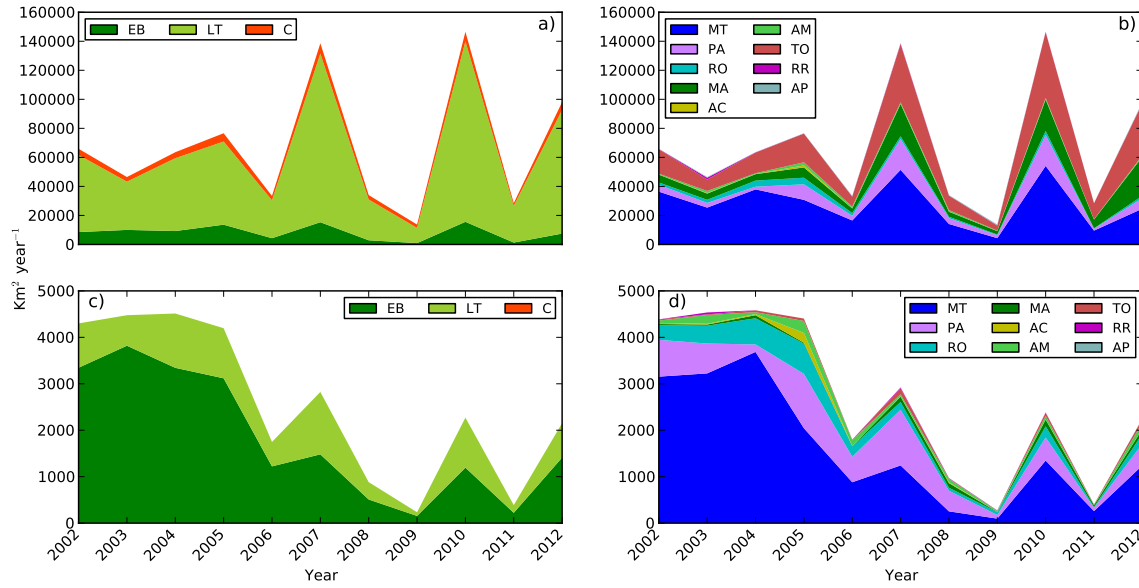


1
 2 Figure 3: Annual forest loss estimates from the Global Forest Change (GFC) project and
 3 deforestation estimates from the Amazon Deforestation Monitoring Project (PRODES) for 2002-
 4 2012 in all of the BLA (a), and partitioned on state level for GFC (b) and PRODES (c).
 5

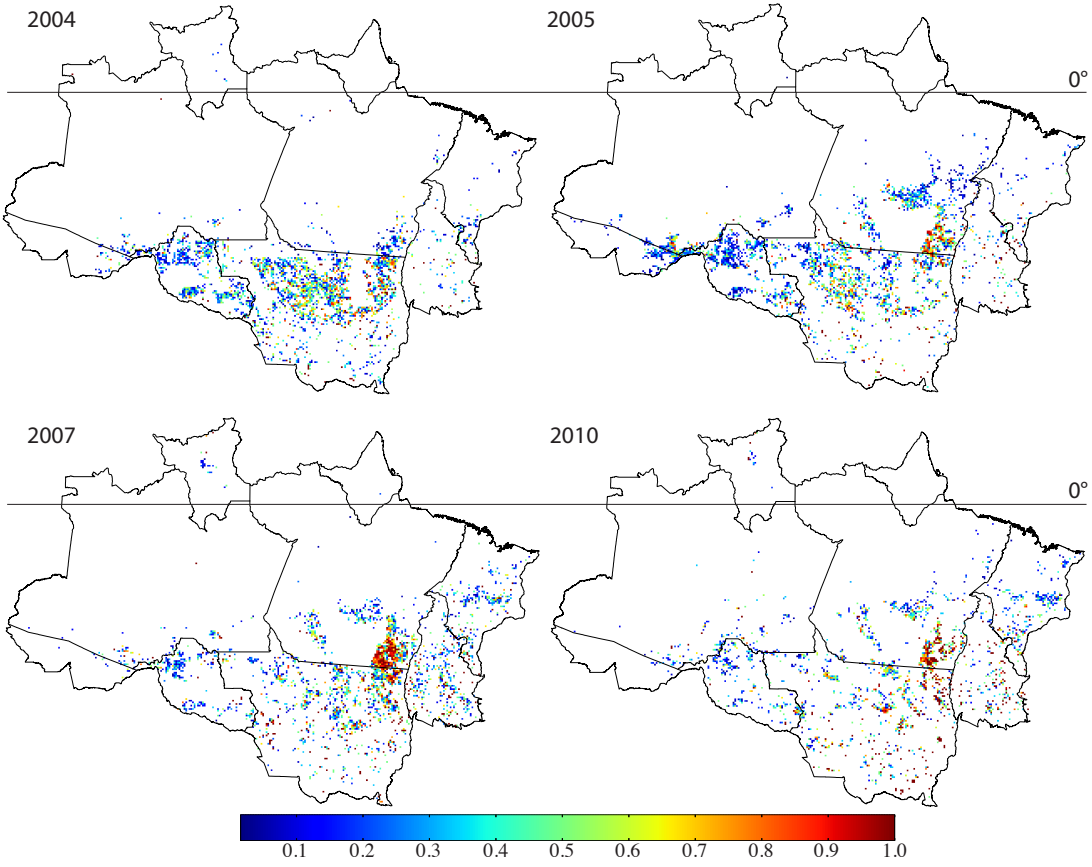


1

2 Figure 4: Annual state-level GFC forest loss for the Brazilian legal amazon and three land cover
 3 classes defined at the year of forest loss.



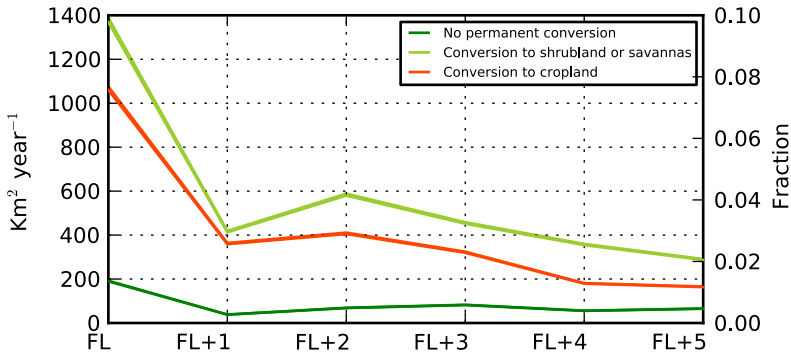
1
 2 Figure 5: Burned area stratified by land cover (a, c) and by state (b, d). Top panels (a and b)
 3 indicate total burned area; bottom panels show burned area coinciding with GFC forest loss.



1

2 Figure 6: Fraction of GFC forest loss coinciding with burned area for the 4 highest fire and/or
 3 tree cover loss years in our study period, averaged on a 0.1° resolution.

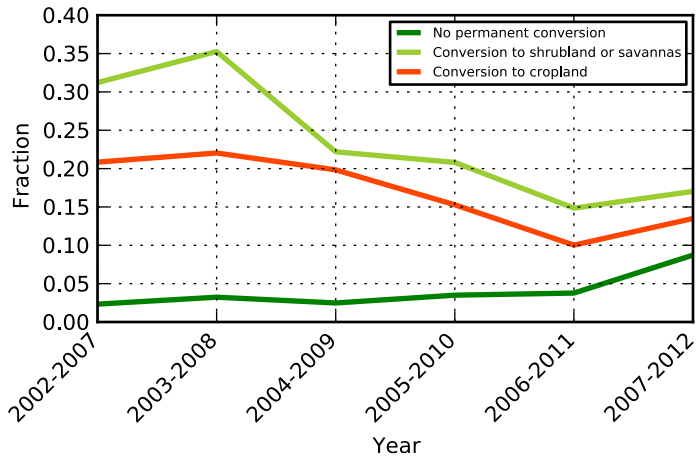
4



1

2 Figure 7: The degree to which fire is used in the deforestation process for different post-forest
 3 loss land uses, shown for the year of forest loss (FL) and 5 years afterwards. Data is averaged for
 4 the 6-year periods starting between 2002 and 2007. The right y-axis indicates the burned area as
 5 a percentage of 2002-2007 averaged evergreen broadleaf forest loss (14,211 km² year⁻¹) and in
 6 total sums up to 46% of total forest loss.

7



1
 2 Figure 8: Fraction of forest loss grid cells where burned area is observed in the 5 years following
 3 forest loss. Results are shown for three different post-forest loss land cover types defined as the
 4 land cover type observed 5 years after the forest loss event.