

Environmental controls on the increasing GPP of terrestrial vegetation across northern Eurasia.

Pawlok Dass¹, Michael A. Rawlins¹, John S. Kimball², and Youngwook Kim²

¹Climate System Research Center, Department of Geosciences, University of Massachusetts, Amherst, MA USA

²NTSG, College of Forestry & Conservation, Univ. of Montana, Missoula, MT, USA

Correspondence to: P. Dass
(pawlok.dass@gmail.com)

Abstract. Terrestrial ecosystems of northern Eurasia are demonstrating an increasing Gross Primary Productivity (GPP), yet few studies have provided definitive attribution for the changes. While prior studies point to increasing temperatures as the principle environmental control, influences from moisture and other factors are less clear. We assess how changes in temperature, precipitation, cloudiness and forest fires individually contribute to changes in GPP derived from satellite data across northern Eurasia using a light use efficiency based model, for the period 1982–2010. We find that annual satellite derived GPP is most sensitive to the temperature, precipitation and cloudiness of summer which is the peak of the growing season and also the period of the year when the GPP trend is maximum. Considering regional median, summer temperature explains as much as 37.7% of the variation in annual GPP, while precipitation and cloudiness explain 20.7 and 19.3%. Warming over the period analyzed, even without a sustained increase in precipitation, led to a significant positive impact on GPP for 61.7% of the region. However, a significant negative impact on GPP was also found, for 2.4% of the region, primarily the dryer grasslands in the south-west of the study area. For this region, precipitation positively correlates with GPP, as does cloudiness. This shows that the south-western part of northern Eurasia is relatively more vulnerable to drought than other areas. While our results further advance the notion that air temperature is the dominant environmental control for recent GPP increases across northern Eurasia, the role of precipitation and cloudiness can not be ignored.

1 Introduction

20 Several analyses of Normalized Difference Vegetation Indices (NDVI) data derived from satellite re-
mote sensing have pointed to a positive trend in Gross Primary Productivity (GPP) and Leaf Area In-
dex (LAI) of the northern high latitudes in the recent decades (Myneni et al., 1997; Carlson and Ripley,
1997; Zhou et al., 2001; Guay et al., 2014). Warming has also occurred over this time. Global mean
25 surface air temperatures increased by 0.2 to 0.3 °C over the past 40 years with warming greatest
across northern land areas around 40–70° N (Nicholls et al., 1996; Overpeck et al., 1997). Precipi-
tation increases have also been observed over both North America and Eurasia over the past cen-
tury (Nicholls et al., 1996; Groisman et al., 1991). Urban et al. (2014) describe the co-occurrence
of these climatic and ecosystem changes. Here we investigate increasing GPP of terrestrial ecosys-
tems of northern Eurasia and determine the relative attribution arising through changes in several
30 geophysical quantities, hereinafter referred to as “environmental variables”, as they potentially drive
observed temporal changes in vegetation productivity.

Gross Primary Productivity (GPP) is a physical measure of the rate of photosynthesis, or the
rate at which atmospheric CO₂ is fixed by autotrophic (generally green) plants to form carbohy-
35 drate molecules. Photosynthesis, being a biological process, is regulated by several environmental
factors. Productivity is highest at the optimum temperature, though this optimum can be modified
by cold or warm acclimation (Larcher, 1969, 2003). Water availability also affects plant hydraulics
and chemistry by controlling the nutrient uptake through shoot transportation (Sharp et al., 2004;
Stevens et al., 2004). Increasing atmospheric CO₂ concentration increases GPP by biochemical fer-
40 tilization for C₃ plants and increasing water use efficiency for both C₃ and C₄ plants (Bowes, 1996;
Rötter and Geijn, 1999).

There is both direct and indirect evidence of increasing productivity across the northern high
latitudes. Flask and aircraft-based measurements show that the seasonal amplitude of atmospheric
45 CO₂ concentration across the Northern Hemisphere has increased since the 1950s, with the greatest
increases occurring across the higher latitudes (Graven et al., 2013). This trend suggests a consid-
erable role of northern boreal forests, consistent with the notion that warmer temperatures have
promoted enhanced plant productivity during summer and respiration during winter (Graven et al.,
2013; Kim et al., 2014; Myneni et al., 1997). Observed at eddy covariance sites, Net Ecosystem Ex-
50 change (NEE), the inverse of Net Ecosystem Productivity (NEP), is a strong function of mean annual
temperature at mid and high latitudes, up to the optimum temperature of approximately 16 °C, above
which moisture availability overrides the temperature influence (Yi et al., 2010). Highlighting the
importance of precipitation, other studies have found vulnerabilities in ecosystems of North Amer-
ica as well as Eurasia from warming-related changes in hydrological patterns (Parida and Buermann,
55 2014; Buermann et al., 2014). With warming, low temperature constraints to productivity have re-

laxed (Nemani et al., 2003; Zhang et al., 2008; Yi et al., 2013). Tree-ring data suggest that black spruce forests have experienced drought stress during extreme warmth (Walker et al., 2015). Over northern Eurasia, precipitation trends have complicated the relationship between temperature and productivity, as the increasing moisture constraints have made northern Eurasia more drought sensitive (Zhang et al., 2008; Yi et al., 2013). Increasing atmospheric CO₂ concentration is another factor, as CO₂ fertilization has been demonstrated through observations, models, and FACE (Free-Air CO₂ Enrichment) experiments (Ainsworth and Long, 2005; Hickler et al., 2008; Graven et al., 2013). Cloudiness or shade can strongly influence vegetation productivity (Roderick et al., 2001), particularly over northern Eurasia (Nemani et al., 2003). Disturbances through forest fires also affect vegetation productivity by destroying existing vegetation and allowing for regeneration (Goetz et al., 2005; Amiro et al., 2000; Reich et al., 2001).

The role of temperature and precipitation in the positive trend of GPP of northern high latitudes, especially northern Eurasia has not been firmly established. Few studies have examined the effect of CO₂ concentration, cloudiness and forest fires. Of these environmental variables, CO₂ concentration is unlike the others, given it's long atmospheric lifetime (~ 100–300 years) (Blasing, 2009). Thus, CO₂ concentration is assumed to be more spatially uniform. As a result, any statistical analysis using this variable will not be comparable with the other variables. We consequently do not analyze the influence of CO₂ concentration. While some studies have focused on terrestrial ecosystems of the pan-Arctic (Urban et al., 2014; Myneni et al., 1997; Guay et al., 2014; Kim et al., 2014) or the high latitudes of North America (Goetz et al., 2005; Buermann et al., 2013; Thompson et al., 2006), few studies have investigated the relative role of different environmental variables on increasing GPP of northern Eurasia. Therefore, we assess in this study how vegetation productivity trends in northern Eurasia are influenced by the environmental variables air temperature, precipitation, cloudiness and forest fire. Objectives are to (1) calculate the long term trend of both GPP and the environmental variables; (2) assess the magnitude of the effect of the environmental variables on GPP; (3) identify the seasonality of the variables; (4) identify the regions of northern Eurasia where the variables boost or reduce GPP. Exploiting the availability of long term time series observation based data we perform a spatially explicit grid point statistical analysis to achieve the above objectives.

85

2 Data and Methods

2.1 Data

2.1.1 Land cover

The study domain is the Northern Eurasia Earth Science Partnership Initiative (NEESPI) region (Groisman and Bartalev, 2007), defined as the area between 15° E longitude in the west, the Pacific coast in the east, 45° N latitude in the south and the Arctic Ocean coast in the north. Total area of this region is 22.4 million km². Land cover distribution for the region is drawn from the Moderate Resolution Imaging Spectroradiometer (MODIS) MCD12Q1 Land Cover Product Type 5 Land Cover Product for the year 2007, available online at https://lpdaac.usgs.gov/data_access/data_pool from Land Processes Distributed Active Archive Center (LP DAAC), Sioux Falls, South Dakota, USA. The product provides global land cover at 1 km spatial resolution, produced from several classification systems, principally that of the International Geosphere-Biosphere Program (IGBP). Friedl et al. (2002) describe the supervised classification methodology which leveraged a global database of training sites interpreted from high-resolution imagery. The GPP products used in this study (described below) use a static land cover (LC) classification to define biome response characteristics over the study record. So the effect of each environmental variable accounts only for changes in NDVI and does not track potential changes in land cover type. While the GPP products use the standard IGBP MODIS global land cover classification, for our statistical analysis we simplify the LC distribution into two fundamental types. One is “herbaceous”, without woody stems, found in the tundra to the north and grasslands to the south, one of the driest biomes of northern Eurasia. The second is “woody vegetation”, plants with woody stems, located within the area of boreal forests extending from west to east across much of the center of the domain (Fig. 1).

2.1.2 Vegetation productivity – long term data

Gross Primary Production (GPP) represents the total amount of carbon fixed per unit area by plants in an ecosystem utilizing the physiological process of photosynthesis (Watson et al., 2000). GPP is one of the key metrics useful in assessments of changes in vegetation productivity. It is also a standard output of process-based vegetation models. The GPP fields used in this study represent model estimates driven by satellite data. The GPP model used is based on a light-use-efficiency (LUE) model that prescribes theoretical maximum photosynthetic conversion efficiency for different land cover classes. LUE is reduced from potential (LUE_{max}) rates for suboptimal environmental conditions determined as the product of daily environmental control factors defined for the different land cover types using daily surface meteorological inputs from ERA–Interim reanalysis data. Daily surface meteorology inputs to the model include incident solar radiation (SW_{rad}), minimum and

120 average daily air temperatures (T_{min} and T_{avg}), and atmospheric vapor pressure deficit (VPD). GPP is derived on a daily basis as (Running et al., 2004; Zhang et al., 2008):

$$GPP = \varepsilon \times FPAR \times PAR \quad (1)$$

$$\varepsilon = \varepsilon_{max} \times T_f \times VPD_f \quad (2)$$

where ε is a light use efficiency parameter (g C MJ^{-1}) for the conversion of photosynthetically active radiation (PAR, MJ m^{-2}) to GPP. FPAR is estimated from NDVI using biome-specific empirical relationships emphasizing northern ecosystems (Yi et al., 2013). Several studies demonstrated the linear relationship between NDVI and FPAR through field measurements and theoretical analysis (Fensholt et al., 2004; Myneni and Williams, 1994; Ruimy et al., 1994; Sellers, 1985). Two sets of NDVI records are obtained for this study and used to derive alternative FPAR and GPP simulations: (i) the third generation Global Inventory Modeling and Mapping Studies (GIMMS3g) (Zhu et al., 2013; Pinzon and Tucker, 2010), downloaded from <https://nex.nasa.gov/nex/> (referred to as GIMMS-GPP) and (ii) the Vegetation Index and Phenology (VIP) database (Didan, 2010; Barreto-Munoz, 2013), downloaded from <http://phenology.arizona.edu/> (University of Arizona's Vegetation Index and Phenology Lab) (referred to as VIP-GPP). The 16-day NDVI records are first interpolated to a daily time step using temporal linear interpolation to estimate daily FPAR following previously established methods (Yi et al., 2013). The use of daily NDVI and FPAR inputs rather than coarser (8-day or 16-day) temporal composites reduces potentially abrupt step changes in the model calculations due to temporal shifts in the coarser time series canopy inputs. Moreover, the daily interpolation was found to improve simulations of GPP seasonality especially during spring and fall transitional periods over northern land areas (Yi et al., 2013). PAR is estimated as a constant proportion (0.45) of incident shortwave solar radiation (SW_{rad}). ε_{max} is the potential maximum ε under optimal environmental conditions. T_f and VPD_f are scalars that define sub-optimal temperature and moisture conditions represented by respective daily T_{min} and VPD inputs. T_f and VPD_f are defined using a linear ramp function (Yi et al., 2013; Heinsch et al., 2006), and minimum and maximum environmental constraints defined for different biome types (T_{mn_min} and T_{mn_max} , VPD_{min} and VPD_{max}). Table 1 summarizes the Biome Property Look-Up Table (BPLUT) used to define the environmental response characteristics in the model. These GPP datasets are currently available through a public FTP directory (ftp://ftp.ntsg.umt.edu/pub/data/HNL_monthly_GPP_NPP/).

150 The GPP data are derived at a daily time step and have been aggregated to a monthly time step for this study. Spatial resolution is 25 km, with a temporal range from 1982 to 2010, restricted to the northern high latitudes ($> 45^\circ \text{N}$). In many of the statistical analyses to follow we use the ensemble mean of the two satellite derived GPP datasets, henceforth denoted as 'GPPsat'. Winter is characterized by extremely low productivity and technical constraints of optical-IR remote sensing due to low

155 solar illumination and persistent cloud cover make for a particular challenge in estimating vegetation indices and consequently computing GPP across the high latitudes (Pettorelli et al., 2005). Given the limited confidence in GPP data over winter (driven mainly by the uncertainty in winter NDVI) we focus on the remainder of the year in our analysis.

160 Accuracy of the GIMMS-NDVI dataset has been examined in several recent studies. Analyzing trends in growing season start over the Tibetan plateau, Zhang et al. (2013) found that GIMMS NDVI differed substantially over the period 2001–2006 from SPOT-VGT and MODIS-NDVIs, indicating significant uncertainty among NDVI retrievals from different satellite sensors and data records. The GIMMS3g dataset is based on the NOAA-AVHRR long term time series record, which
165 is comprised of AVHRR2 and AVHRR3 sensors onboard NOAA-7 through NOAA-19 satellites spanning multiple overlapping time periods; this leads to potential artifacts from cross-sensor differences and inter-calibration effects influencing long-term trends in the AVHRR NDVI time series (Pinzon and Tucker, 2014). The Vegetation Index and Phenology (VIP) NDVI dataset applies a different data processing scheme from that of GIMMS3g (Fensholt et al., 2015), and involves an integration and calibration of overlapping AVHRR, SPOT and MODIS sensor records for generating
170 consistent NDVI (Didan, 2010). The ensemble mean and variance of alternate GPP calculations derived using the GIMMS3g and VIP NDVI records was used as a metric of uncertainty in the regional productivity trends and underlying satellite observation records.

175 **2.1.3 Flux tower data**

To verify the satellite based GPP estimates we use gap-filled daily tower GPP data at ten flux tower sites distributed across northern Eurasia, available for different periods of time. Details of the individual towers are provided in Table 4. The data, generated using the eddy covariance measurements acquired by the FLUXNET community, has been collected from <http://www.fluxdata.org/> for the
180 “Free Fair-Use” data subset. The spatial distribution of the flux towers used in this study is shown in Fig. 1. Unless otherwise noted we use seasonal totals of the daily gap-filled tower GPP data. Monthly and seasonal values were aggregated from the daily data.

We also use monthly GPP data computed using FLUXNET observations of carbon dioxide, water and energy fluxes upscaled to the global scale for additional verification of the satellite derived
185 GPP record for the entire study area, on a per grid cell basis. Upscaling of the FLUXNET observations was performed using a machine learning technique and model tree ensembles (MTE) approach from the Max Planck Institute of Biogeochemistry, Jena, Germany and available online at <https://www.bgc-jena.mpg.de/geodb/projects/Data.php>. Description and benchmarking of this dataset
190 can be found in Jung et al. (2009) and Jung et al. (2011). Of the two versions available, we use the

one which incorporates flux partitioning based on Reichstein et al. (2005).

2.1.4 Temperature, precipitation & cloudiness

Monthly values of 2 m air temperature (in °C), precipitation (in mm) and cloudiness (in %) are taken
195 from monthly observations from meteorological stations, extending over the global land surface and
interpolated onto a 0.5° grid (Mitchell and Jones, 2005). The dataset, CRU TS 3.21, is produced by
the Climatic Research Unit of the University of East Anglia in conjunction with the Hadley Centre (at
the UK Met Office) and is available at <http://iridl.ldeo.columbia.edu/SOURCES/.UEA/.CRU/.TS3p21/.monthly/>
(Jones and Harris, 2013).

200

Although the LUE based GPP model does not use precipitation as an input, we assume that precip-
itation is a useful metric of water supply to vegetation and thus analyze it as one of the environmental
variables affecting GPP. Here we use monthly values of temperature, precipitation and cloudiness for
the period of 1982 to 2010, since this is the common period for which both GPPsat and the environ-
205 mental variable data are available. Seasonal means for spring (March, April, May), summer (June,
July, August), and autumn (September, October, November) are derived from the monthly values.
As explained in SubSect. 2.1.2, lower reliability and availability of satellite NDVI observations and
associated GPP data for the winter months leads us to focus on spring, summer, and autumn seasons.

210 2.1.5 Fire

Fire is represented by proportional burned area (% of each grid cell) estimates from the Global Fire
Emissions Database (GFED) Monthly Burned Area Data Set Version 3.1 released in April 2010.
This product was developed on a global scale at a 0.5° spatial resolution and covers the period
from 1997 to 2011. The GFED is an ensemble product of burn areas derived from multiple satel-
215 lite sensors, though primarily emphasizing MODIS surface reflectance imagery (Giglio et al., 2010).

2.2 Methods

2.2.1 Spatial interpolation

Data not on a 0.5 degree grid were interpolated to that resolution using spherical version of Shep-
220 ard's traditional algorithm (Shepard, 1968; Willmott et al., 1985). This method takes into account (i)
distances of the data points to the grid location (ii) the directional distribution of stations in order
to avoid overweighting of clustered stations and (iii) spatial gradients within the data field in the
grid-point environment.

2.2.2 Verification

225 The GIMMS-GPP and VIP-GPP simulations are evaluated against co-located tower-based GPP ob-
servations for model grid cells corresponding to each of the ten regional flux tower locations (Ta-
ble 4). The evaluation is carried out using five different approaches: (1) Pearson’s product moment
correlation, which is a measure of the linear dependence between simulated (GIMMS-GPP and VIP-
GPP) and observed (tower-based GPP) values and it’s value ranges from -1 to $+1$ where 0 is no
230 correlation and $-1/+1$ is total negative or positive correlation respectively; (2) percent bias, which
measures the average tendency of the simulated values to be larger or smaller than the corresponding
observations. The optimal value is 0.0 with low-magnitude values indicating accurate model simu-
lations. Positive values indicate overestimations and vice versa (Yapo et al., 1996; Sorooshian et al.,
1993); (3) Nash–Sutcliffe efficiency (NSE) coefficient, which is a normalized statistic that deter-
235 mines the relative magnitude of the residual variance compared to the measured data variance
(Nash and Sutcliffe, 1970). The statistic indicates how well the plot of observed vs. simulated data
fits the 1 : 1 line. Nash–Sutcliffe efficiencies range from $-\infty$ to 1. An efficiency of 1 corresponds
to a perfect match of model simulated GPP to the observed data. An efficiency of 0 indicates that
the model predictions are as accurate as the mean of the observed data, whereas an efficiency less
240 than zero occurs when the observed mean is a better predictor than the model or, in other words,
when the residual variance (between modeled and observed values), is larger than the data variance
(between observed values and the observed mean). Essentially, the closer the model efficiency is to
1, the more accurate the model is; (4) Scatter plot, which demonstrates using Cartesian coordinates
the correlation between satellite derived GPP and tower derived GPP at the respective sites for the
245 respective time periods. This along with the line of best fit helps determine how well the two datasets
agree with each other; (5) Spatially explicit, pixel-by-pixel validation using the upscaled GPP data
from FLUXNET observations (described in SubSect. 2.1.3) using correlation and difference maps
for the entire period.

250 2.2.3 Trend analysis

Temporal changes for each environmental variable are determined using linear regression. Both an-
nual and seasonal time integrations are examined. Trends are deemed statistically significant at the
95 % level. For each variable, we compute the trend per decade ($10yr^{-1}$) from the monthly val-
ues (mon^{-1}). Other studies have implemented a similar methodology to identify trends (Piao et al.,
255 2011; de Jong et al., 2011; Forkel et al., 2013; Goetz et al., 2005). In order to determine whether the
temporal rate of change differs for different periods of the study period we plot the percentage dif-
ference of the annual means (of the regional average) from that of the first 5 year mean.

For the entire period of study, a few of the variables assessed show strong trends. Moreover, we
260 assume the variables to be linearly associated. This introduces the issue of collinearity, as a consequence of which the study of influence of one variable on another becomes less precise. Therefore, in order to make accurate assessments of correlation between two variables, correlation analysis has only been carried out after long term trends (for period 1982–2010) have been removed and consequently preserving only the inter-annual variability.

265

2.2.4 Correlation

We use the Karl Pearson's product-moment correlation coefficient (represented as R), one of the more popular measures of dependence between two variables and which is sensitive only to a linear relationship between two variables. This metric is defined from +1 (perfect increasing linear
270 relationship) to -1 (perfect decreasing linear relationship or "inverse correlation") and as the value approaches zero, the relationship becomes uncorrelated (Dowdy and Wearden, 1983). When a single variable is affected by more than one independent factor, simple correlation is inappropriate. We perform partial correlation to better assess the relationship between two variables after eliminating the influence of other variables.

275

2.2.5 Attribution

The primary objective of this study is to determine the magnitude and spatio-temporal variations in trends for environmental conditions (variables) which have contributed to the change increase in GPP of northern Eurasia indicated from the satellite records. Ideally one would study the direct in-
280 fluence of one condition on another in experiments in which all other possible causes of variation are eliminated. However, since this study involves only large scale observational data and not process based models or laboratory based experiments, there is no control over the causes of variation. Investigations into the structure and function of terrestrial ecosystems, like those for many elements of the biological sciences, involve quantities which are often correlated. In some cases, the derived relationship may be spurious. The coefficient of determination (represented as R^2) is a common measure to
285 estimate the degree to which one variable can be explained by another (percentage) (Wright, 1921) while correlation analysis (R) can explain this dependence of one variable on another keeping the sign of the relationship (+/-) intact (Aldrich, 1995).

290 3 Results & Discussion

3.1 Verification of satellite derived GPP

The GIMMS-GPP and VIP-GPP, as well as their ensemble mean (GPPsat) are individually verified against the flux tower-based GPP data using Pearson's correlation coefficient, percent bias as well as the Nash–Sutcliffe normalized statistic. Scatter plots (Figure 2) show that GPP derived from the satellite NDVI records are generally higher than the tower-based GPP at the flux tower sites having comparatively lower productivity (and vice versa). Moreover, the agreement is stronger at lower productivity sites than at higher productivity sites. Though Table 3 lists all of the verification statistics, we focus primarily on the annual GPPsat results for the rest of the study. The correlation coefficients are all positive and high (0.7 for annual GPPsat), percent bias is predominantly negative (18.3%) and since all the values of the Nash–Sutcliffe Efficiencies are above zero (0.33), we conclude that the satellite NDVI derived values are a more accurate estimate of GPP than the observed mean for the respective flux tower sites. Spatially explicit verification of GPPsat reveals that the correlation is high and statistically significant for almost the entire study area (Fig. 3 (a.)). GPPsat shows a general underestimation in the boreal forests of the western parts of northern Eurasia and overestimation in the Eurasian steppes to the south of the study area (Fig. 3 (b.)).

Satellite derived vegetation indices have been evaluated using a variety of techniques. Using tree ring width measurements as a proxy for productivity, Berner et al. (2011) examined its relationship with NDVI from advanced very high resolution radiometers (AVHRR) and found the correlation to be highly variable across the sites, though consistently positive. Remarkably strong correlations were observed in comparisons of GIMMS3g NDVI to aboveground phytomass at the peak of summer at two representative zonal sites along two trans-Arctic transects in North America and Eurasia (Raynolds et al., 2012). Comparing production efficiency model derived NPP, Zhang et al. (2008) to the stand level observations of boreal aspen growth for the 72 CIPHA (Climate Impacts on Productivity and Health of Aspen) sites, correlation was found to be positive. LUE algorithms similar to the one used in this study for the generation of GPP datasets from satellite NDVI, produce favorable GPP results relative to daily tower observations, with a strong positive correlation (Yi et al., 2013; Yuan et al., 2007; Schubert et al., 2010). Evaluating the uncertainties in the estimated carbon fluxes computed using a similar LUE based GPP model, Yi et al. (2013) concluded that the uncertainty in light use efficiency (ϵ) characterization is the main source of simulated GPP uncertainty. GPP simulation errors under dry conditions are increased by an insufficient model vapor pressure deficit (VPD) representation of soil water deficit constraints on canopy stomatal conductance and ϵ (Leuning et al., 2005; Schaefer et al., 2012). It was also found that the GPP model does not consider the response of ϵ to diffuse light due to canopy clumping (Chen et al., 2012) and due to shaded leaves (Gu et al.,

325 2002).

3.2 Temporal changes in GPP

Across the study domain, regionally averaged GPPsat exhibits a trend of $2.2 (\pm 1.4) \text{ g C m}^{-2} \text{ month}^{-1} \text{ decade}^{-1}$. Figure 4(a.) displays the annual GPP trend map. Increases are noted across most of the region except
330 for a small area in the north-central part of the region, just east of the Yenisey River. The largest increases are located in the western and south-eastern part of the region. Over half (69.1 %) of the study area exhibits a statistically significant positive trend (95 % significance level) while 0.01 % of the area has a statistically significant negative trend. Uncertainty in the ensemble mean GPP is illustrated by the coefficient of variation map (Fig. 4(b.)). The highest uncertainty is noted in the
335 north-central and the south-western part of the region. The yearly increase in annual GPP for both GIMMS-GPP (red) and VIP-GPP (blue) (Fig. 4(c.)) reveal the difference between the two datasets, which is highest at the beginning of the study period. The nature of increase in GPP is also different for the two datasets with the rise in one being more linear than the other. A possible explanation for the differences in the two datasets is discussed in Section 2.1.2. Examining the seasonality of GPP
340 trends (of GPPsat) (Fig. 5), we find that the summer trend is greatest among all other seasons. This implies that the response of GPP to environmental changes is greatest at the peak of the growing season. While the productivity of the region is predominantly increasing, there are clearly certain areas each season with decreasing productivity.

345 The GPP increase described here is consistent with the results of Sitch et al. (2007), who also noted considerable interannual and spatial variability, with many areas demonstrating decreased greenness and lower productivity. Using a process based model (LPJ-DGVM) to perform a retrospective analysis for the period of 1982–1998, Lucht et al. (2002) found, after accounting for the carbon loss due to autotrophic respiration, that boreal zone NPP increased by $34.6 \text{ g C m}^{-2} \text{ yr}^{-1}$,
350 which is comparable to our estimate. The higher GPP trend in summer (Fig. 5), especially over the northern Eurasia portion of the domain suggests that the vegetation of this region is predominantly cold constrained, a finding described in other recent studies (Yi et al., 2013; Kim et al., 2014).

3.3 Temporal changes in the environmental variables

355 The regionally averaged air temperature increase is nearly monotonic and the distributions displayed in Fig. 6(a.) show that the region has a predominantly positive trend for all parts of the growing season. Warming is highest in autumn. A statistically significant increase in temperature is noted for approximately half of the region. The greatest increases are found in the north-eastern and south-western parts of the region (maps not shown). Unlike temperature, precipitation does not exhibit a

360 sustained increase over the study period. While the regional median trend for precipitation is highest
for spring (Fig. 6(b.)), the range of trends for this region, from minimum to maximum, is highest
for summer. The fraction of the region experiencing significant increases in annual precipitation is
about three times the area experiencing significant decreases. The significant positive trends are lo-
cated in the north-eastern and western parts (mainly boreal forests) of the domain while significant
365 negative trends are located in the west-central (boreal forests) and south-eastern (steppes) parts of
the region (maps not shown). Along with the regional averages of other environmental variables, Ta-
ble 4 reveals the regional average of cloudiness, which shows a negative trend. However, similar to
precipitation, the spatial standard deviation is very high, implying a high spatial variability in cloudi-
ness trends across the region. Unlike precipitation, a greater fraction of the region is experiencing
370 significant decreasing cloudiness or a significant clear sky trend (Fig. 6(c.)). Compared to the rest
of the region, annual cloudiness shows higher negative trends in the southern parts of the study area
(maps not shown). Burnt area exhibits significant trends, both positive and negative, over only 1 %
of the region with the total yearly burnt area for the study area increasing from 15.9 to 17.1 million
hectares from 1997 to 2010. The negative trend of the regional mean (Table 4; Fig. 6(d.)), is not
375 significant.

Recent studies have reported similar changes in these environmental variables. For the period of
1979 to 2005, Trenberth et al. (2007) found temperature trends over the region range from 0.3–0.7
°C decade⁻¹ and for most regions of the higher latitudes, especially from 30 to 85°N, significant
380 positive precipitation trends have occurred. Contrary to the cloud cover trend we find here, stud-
ies reported in AR4 suggest an increase in total cloud cover since the middle of the last century
over many continental regions, including the former USSR and Western Europe (Sun et al., 2001;
Sun and Groisman, 2000). The large spatial variability in the gridded cloud cover trends (Table 4)
may explain the disagreement. Burnt area data, representing fire disturbance, is dissimilar from the
385 other environmental variables in that it spans only 14 years of the 29 year study record, and is spa-
tially non-uniform, involving only a fraction of the total study area. This limitation makes it difficult
to assess impacts on vegetation productivity (Balshi et al., 2007). While the model used to generate
the satellite NDVI derived GPP data does not account for CO₂ fertilization directly, the fertilization
effect may be partially represented through associated changes in NDVI. As stated in Sect. 1, we do
390 not analyze atmospheric CO₂ concentration due to its spatial homogeneity.

3.4 Attributing GPP changes to environmental variables and assessing seasonality

Annual GPP is affected by more than one environmental variable. To study the impact of an in-
dividual environmental variable, we eliminate the impact of other variables by performing partial
395 correlations. The temporal range of the fire data (GFED) being a fraction of that of the other envi-

ronmental variables, it is not possible to compute the partial correlation. Consequently we are unable to assess the effects of only fire by eliminating the effects of the other variables. Moreover, fires have been found to be significantly correlated to annual GPP (GPPsat) for only a small fraction (1.7% to 3.4% depending on season) of the entire study area. The impact of fires on annual GPP for the region is therefore ignored in this study.

The regional median partial coefficient of determination (R^2) for significant values (Table 5) suggests that the summer values of the environmental variables have the highest influence on annual GPPsat. The contrast between summer and the other seasons is strongest for temperature, highlighting the importance of summer temperatures to annual productivity. Fig. 7 reveals that the relationships between annual GPP and the environmental variables are not completely explained by simple correlation (R^2), as the distributions of partial correlations provide more information about the interaction. Considering only significant correlations (Fig. 7), we find that increasing temperatures predominantly increase GPP. The relationship between precipitation or cloudiness and GPP, on the other hand, leads to a predominantly bi-modal distribution, with both positive and negative effects. Other than spring, areas demonstrating significant negative partial correlations appear to be larger than the areas of significant positive partial correlations. Among the environmental variables assessed, temperature has the highest partial coefficient of determination (Table 5). Moreover, unlike precipitation and cloudiness, temperature has a predominantly positive relationship with annual GPP. These relationships imply that, over recent decades, low temperatures have been the major constraint for GPP in northern Eurasia.

Similar results were reported by Yi et al. (2014), who concluded that satellite derived vegetation indices show an overall benefit for summer photosynthetic activity from regional warming and only a limited impact from spring precipitation. The dominant constraint of temperature was described by Zhang et al. (2008), who found the same constraint to be decreasing. However, our results contrast with those of Piao et al. (2011), who concluded that at the continental scale of Eurasia, vegetation indices in summer are more strongly regulated by precipitation, while temperature is a relatively stronger regulator in spring and autumn. Regarding the dominance of temperature as a regulator, Yi et al. (2013) concluded that over the last decade, Eurasia has been more drought sensitive than other high latitude areas.

Since GPP trends are highest in summer (Fig. 5), the peak of the growing season, we are interested more in the impact of the environmental variables during summer on annual GPP since the terrestrial vegetation is likely to be more responsive to variations in summer environmental conditions relative to other seasons. Spatial analysis helps to elaborate on the results shown in Table 5 and Fig. 7. Assessing the partial significant correlation of annual GPP and summer temperature (Fig. 8(a)); Ta-

ble 6), we find that areas with a positive correlation (62% of the area) are concentrated to the north and east of the region, which include both tundra and boreal forest areas. Negative correlations occur across 2% of the region, largely in the south within the Eurasian steppes. For other parts of the year (maps not shown for spring and fall correlations but distributions represented in Fig. 7) significant negative correlations become more spatially disperse, while significant positive correlations are limited to the center and west of the region for spring, becoming more disperse in autumn. Determining the partial relationship between annual GPP and summer precipitation, Fig. 8(b.) reveals that the areas of significant positive correlations (4% of area) are scattered over the southern part of the study area (steppes vegetation) while the significant negative correlations (16% of area) are scattered across the north (tundra and boreal). Correlations for spring precipitation with annual GPP (maps not shown) are predominantly positive while that for fall precipitation is predominantly negative. The spatial correlations for summer cloudiness and summer precipitation are similar, (Fig. 8(c.)) though the area under significant correlation is comparatively less. Negative correlation areas are about nine times more extensive than positive correlation areas (Table 6). Compared to summer, area under significant positive correlation is higher for spring while area under negative correlation is higher for fall (maps not shown).

The negative correlations for temperature and positive correlations for precipitation and cloudiness in the southern grasslands (Eurasian steppes) are not surprising, as these grasslands are relatively dry compared to other biomes in the broader region. In this part of the study area increasing temperatures in summer may lead to greater water stress (Gates, 1964; Wiegand and Namken, 1966; Jackson et al., 1981). Decreasing precipitation would increase water stress. Moreover, increasing cloud cover would tend to lead to a higher probability of rain (Richards and Arkin, 1981), thus relieving water stress induced by warming in this relatively dry area. The cause of the negative correlations in the north is unclear. The relationship may be attributable to the predominantly positive relationship between cloud cover (equivalent to inverse of sunshine duration) and precipitation (Sect. 3.5). In the light limited and relatively colder north, an increase in cloud cover could, on one hand, cause a decrease in direct radiation and increase in diffuse radiation, which may increase GPP through higher light use efficiency (LUE) (Alton et al., 2007; Gu et al., 2002; Williams et al., 2014; Roderick et al., 2001). However, an increase in cloud cover could decrease total solar radiation and, in turn, productivity (Nemani et al., 2003; Shim et al., 2014).

Recent studies have shown similar relationships to those found here. Zhang et al. (2008) showed that across the pan-Arctic basin, while productivity increased with warming, increasing drought stress can offset some of the potential benefits. On the contrary, Yi et al. (2013) concluded that while GPP was significantly higher during warm years for the pan-Arctic, the same was not true for the Eurasian boreal forests, which showed greater drought sensitivity. Positive impacts of warm-

470 ing on GPP have been suggested in warming experiments (Natali et al., 2013). However, decreasing growing-season forest productivity, represented as a decline in “greenness” across northern Eurasia, may be a reflection of continued summer warming in the absence of sustained increases in precipitation (Buermann et al., 2014; Zhou et al., 2001).

475 **3.5 Relationships among individual environmental variables**

Environmental variables are not independent of one another. We examine correlations among the de-trended individual variables to better understand their interactions. Figure 9 shows distributions of the correlations. The temperature–precipitation correlation is predominantly negative, indicating that increases in precipitation did not accompany recent warming. Significant negative trends are
480 located in the southern parts of the study area (steppes) as well as the boreal forests at the western and eastern ends of the region. These changes may be leading to increasing water stress, evidence of which is noted in a subset of the region. Indeed, approximately 2.4 % of the area in the southern parts of the study area (Fig. 8(a.) shows significant negative partial correlation between annual GPP (GPPsat) and summer temperature. The relationship between temperature and cloud cover is
485 similarly predominantly negative. Spatially however, the significant negative correlations are located in the central and western parts of the region. Grid cell-wise correlations between precipitation and cloud cover are predominately positive, with the significant correlations spread out across the region. As described in Section 3.4, the correlations between precipitation and cloud cover helps to explain why spatial distributions of the correlation coefficients of precipitation and cloud cover with GPP are
490 similar. Wang et al. (2014) documented a positive relationship between sunshine duration (equivalent to the inverse of cloud cover) and vegetation greenness. While increasing cloud cover leads to an increased probability of precipitation, and thus reduces water stress, it also reduces the sunshine duration and hence GPP. According to Table 4, regional mean precipitation has a positive trend while cloudiness has a negative trend. But Figure 9 reveals the predominantly positive correlation between
495 these two variables. This apparent contradiction is because the long term trends are calculated for the actual values while the correlation analysis is performed after de-trending (removing long term trends) the variables.

Consistent with our results, Thompson et al. (2006) found that in the boreal and tundra regions of
500 Alaska, NPP decreased when it was warmer and dryer and increased when it was warmer and wetter. They also described how colder and wetter conditions also increased NPP. Yi et al. (2013) concluded that while globally, annual GPP for boreal forests is significantly higher in warmer years, the relationship does not hold true for Eurasian boreal forests, which they identify to be more drought sensitive. For this reason, regional GPP variations are more consistent with regional wetting and
505 drying anomalies, as we note for the southwestern part of the study region. In this study we as-

essed only GPP. Other carbon cycle processes such as autotrophic and heterotrophic respiration and disturbances may not be responding in a similar manner. Additional studies are required before extrapolating these results to other carbon cycle components.

510 4 Conclusions

The ensemble mean of the GPP datasets derived from GIMMS3g and VIP NDVI data indicates that vegetation productivity generally increased across northern Eurasia over the period 1982 to 2010, with a significant increase for as much as 69.1 % of the region. A significant decrease in GPP occurred across only 0.01 % of the region. We note some disagreement in the nature and magnitude of the increasing GPP among the two datasets. The regional mean trend for the ensemble mean GPP is $2.2(\pm 1.4) \text{ g C m}^{-2} \text{ month}^{-1} \text{ decade}^{-1}$. The regional analysis is consistent with results of prior studies which have suggested that air temperature is the dominant environmental variable influencing productivity increases across the northern high latitudes. Examining partial coefficients of determination (R^2), we find that the summer values of temperature, precipitation and cloudiness have the highest influence on annual GPP. Considering the regional median of partial significant R^2 values, summer air temperature explains as much as 37.7 % of the variation in annual GPP. In contrast, precipitation and cloudiness explain 20.7 and 19.3 % respectively. A significant positive partial correlation between summer air temperature and annual GPP is noted for 61.7 % of the region. For 2.4 % of the area, specifically the dryer grasslands in the southwest, temperature and GPP are inversely correlated. Precipitation and cloudiness during summer also impart a significant influence, showing areas with both positive and negative significant partial correlation with annual GPP. Fire has a very small effect, with only up to 3.4 % of the region showing significant correlation, and consequently the impact of fire on GPP was ignored for the subsequent analysis. The spatial analysis reveals that the statistical relationships are not spatially homogeneous. While warming likely contributed to increasing productivity across much of the north of the region, the relationship reverses in the southern grasslands which are relatively dry. That region exhibits increasing GPP, but with warming accompanying increased moisture deficits potentially restricting continued productivity increase. This result demonstrates that vegetation has been resilient to drought stress which may be increasing over time.

535

We recommended that this study be followed up with experiments conducted using process-based models in which a single forcing variable independent of the others is manipulated. If feasible, multiple models should be used in order to quantify the uncertainty due to differences in model parameterization. Depending on emissions, population and other forcing scenarios, rates of change in the environmental drivers such as air temperature and precipitation may be different than those

540

found in this study. Thus it is critical to examine future scenarios of change across the region to better understand terrestrial vegetation dynamics under the respective model simulations. Environmental drivers influence other elements of the carbon cycle beyond the individual plant. In order to determine how terrestrial carbon stocks and fluxes have changed in the recent past, or may change
545 in the near future, all aspects of the carbon cycle should be investigated in the context of changes in overarching climate influences.

Acknowledgements. This research was supported by the U.S. National Aeronautics and Space Administration NASA grant NNX11AR16G and the Permafrost Carbon Network (<http://www.permafrostcarbon.org/>) funded
550 by the National Science Foundation. The MODIS Land Cover Type product data was obtained through the on-line Data Pool at the NASA Land Processes Distributed Active Archive Center (LP DAAC), USGS/Earth Resources Observation and Science (EROS) Center, Sioux Falls, South Dakota (<https://lpdaac.usgs.gov/dataaccess>). We thank the researchers working at FLUXNET sites for making available their CO₂ flux data.

555 References

- Ainsworth, E. A. and Long, S. P.: What have we learned from 15 years of free-air CO₂ enrichment (FACE)? A meta-analytic review of the responses of photosynthesis, canopy properties and plant production to rising CO₂, *New Phytologist*, 165, 351–372, doi:10.1111/j.1469-8137.2004.01224.x, <http://onlinelibrary.wiley.com/doi/10.1111/j.1469-8137.2004.01224.x/abstract>, 2005.
- 560 Aldrich, J.: Correlations Genuine and Spurious in Pearson and Yule, *Statistical Science*, 10, 364–376, <http://www.jstor.org/stable/2246135>, 1995.
- Alton, P. B., North, P. R., and Los, S. O.: The impact of diffuse sunlight on canopy light-use efficiency, gross photosynthetic product and net ecosystem exchange in three forest biomes, *Global Change Biology*, 13, 776–787, doi:10.1111/j.1365-2486.2007.01316.x, <http://onlinelibrary.wiley.com/doi/10.1111/j.1365-2486.2007.01316.x/abstract>, 2007.
- 565 Amiro, B. D., Chen, J. M., and Liu, J.: Net primary productivity following forest fire for Canadian ecoregions, *Canadian Journal of Forest Research*, 30, 939–947, doi:10.1139/x00-025, <http://www.nrcresearchpress.com/doi/abs/10.1139/x00-025>, 2000.
- Balshi, M. S., McGuire, A. D., Zhuang, Q., Melillo, J., Kicklighter, D. W., Kasischke, E., Wirth, C., Flannigan, M., Harden, J., Clein, J. S., Burnside, T. J., McAllister, J., Kurz, W. A., Apps, M., and Shvidenko, A.: The role of historical fire disturbance in the carbon dynamics of the pan-boreal region: A process-based analysis, *Journal of Geophysical Research: Biogeosciences*, 112, G02 029, doi:10.1029/2006JG000380, <http://onlinelibrary.wiley.com/doi/10.1029/2006JG000380/abstract>, 2007.
- 570 Barreto-Munoz, A.: Multi-Sensor Vegetation Index and Land Surface Phenology Earth Science Data Records in Support of Global Change Studies: Data Quality Challenges and Data Explorer System, <http://arizona.openrepository.com/arizona/handle/10150/301661>, 2013.
- Berner, L. T., Beck, P. S. A., Bunn, A. G., Lloyd, A. H., and Goetz, S. J.: High-latitude tree growth and satellite vegetation indices: Correlations and trends in Russia and Canada (1982–2008), *Journal of Geophysical Research: Biogeosciences*, 116, G01 015, doi:10.1029/2010JG001475, <http://onlinelibrary.wiley.com/doi/10.1029/2010JG001475/abstract>, 2011.
- 580 Blasing, T.: Recent Greenhouse Gas Concentrations, Tech. rep., http://cdiac.ornl.gov/pns/current_ghg.html, 2009.
- Bowes, G.: Photosynthetic responses to changing atmospheric carbon dioxide concentration, in: *Photosynthesis and the Environment*, pp. 387–407, Springer, 1996.
- 585 Buermann, W., Bikash, P. R., Jung, M., Burn, D. H., and Reichstein, M.: Earlier springs decrease peak summer productivity in North American boreal forests, *Environmental Research Letters*, 8, 024 027, doi:10.1088/1748-9326/8/2/024027, <http://iopscience.iop.org/1748-9326/8/2/024027>, 2013.
- Buermann, W., Parida, B., Jung, M., MacDonald, G. M., Tucker, C. J., and Reichstein, M.: Recent shift in Eurasian boreal forest greening response may be associated with warmer and drier summers, *Geophysical Research Letters*, p. 2014GL059450, doi:10.1002/2014GL059450, <http://onlinelibrary.wiley.com/doi/10.1002/2014GL059450/abstract>, 2014.
- 590 Carlson, T. N. and Ripley, D. A.: On the relation between NDVI, fractional vegetation cover, and leaf area index, *Remote Sensing of Environment*, 62, 241–252, doi:10.1016/S0034-4257(97)00104-1, <http://www.sciencedirect.com/science/article/pii/S0034425797001041>, 1997.

- 595 Chen, J. M., Mo, G., Pisek, J., Liu, J., Deng, F., Ishizawa, M., and Chan, D.: Effects of foliage clumping on the estimation of global terrestrial gross primary productivity, *Global Biogeochemical Cycles*, 26, 2012.
- de Jong, R., de Bruin, S., de Wit, A., Schaepman, M. E., and Dent, D. L.: Analysis of monotonic greening and browning trends from global NDVI time-series, *Remote Sensing of Environment*, 115, 692–702, doi:10.1016/j.rse.2010.10.011, <http://www.sciencedirect.com/science/article/pii/S0034425710003160>,
600 2011.
- Didan, K.: Multi-Satellite Earth Science Data Record for Studying Global Vegetation Trends and Changes, in: *Proceedings of the 2010 International Geoscience and Remote Sensing Symposium*, Honolulu, HI, USA, pp. 25–30, 2010.
- Dowdy, S. and Wearden, S.: *Statistics for research*, Wiley series in probability and mathematical statistics (,
605 1983.
- Fensholt, R., Sandholt, I., and Rasmussen, M. S.: Evaluation of MODIS LAI, fAPAR and the relation between fAPAR and NDVI in a semi-arid environment using in situ measurements, *Remote Sensing of Environment*, 91, 490–507, 2004.
- Fensholt, R., Horion, S., Tagesson, T., Ehammer, A., Grogan, K., Tian, F., Huber, S., Verbesselt, J., Prince,
610 S. D., Tucker, C. J., and Rasmussen, K.: Assessment of Vegetation Trends in Drylands from Time Series of Earth Observation Data, in: *Remote Sensing Time Series*, edited by Kuenzer, C., Dech, S., and Wagner, W., no. 22 in *Remote Sensing and Digital Image Processing*, pp. 159–182, Springer International Publishing, http://link.springer.com/chapter/10.1007/978-3-319-15967-6_8, 2015.
- Forkel, M., Carvalhais, N., Verbesselt, J., Mahecha, M. D., Neigh, C. S. R., and Reichstein, M.: Trend Change
615 Detection in NDVI Time Series: Effects of Inter-Annual Variability and Methodology, *Remote Sensing*, 5, 2113–2144, doi:10.3390/rs5052113, <http://www.mdpi.com/2072-4292/5/5/2113>, 2013.
- Friedl, M. A., McIver, D. K., Hodges, J. C. F., Zhang, X. Y., Muchoney, D., Strahler, A. H., Woodcock, C. E., Gopal, S., Schneider, A., Cooper, A., Baccini, A., Gao, F., and Schaaf, C.: Global land cover mapping from MODIS: algorithms and early results, *Remote Sensing of Environment*, 83, 287–302, doi:10.1016/S0034-4257(02)00078-0,
620 <http://www.sciencedirect.com/science/article/pii/S0034425702000780>, 2002.
- Gates, D. M.: Leaf Temperature and Transpiration1, *Agronomy Journal*, 56, 273, doi:10.2134/agronj1964.00021962005600030007x, <https://www.agronomy.org/publications/aj/abstracts/56/3/AJ0560030273>,
1964.
- 625 Giglio, L., Randerson, J. T., van der Werf, G. R., Kasibhatla, P. S., Collatz, G. J., Morton, D. C., and DeFries, R. S.: Assessing variability and long-term trends in burned area by merging multiple satellite fire products, *Biogeosciences*, 7, 1171–1186, doi:10.5194/bg-7-1171-2010, <http://www.biogeosciences.net/7/1171/2010/>, 2010.
- Goetz, S. J., Bunn, A. G., Fiske, G. J., and Houghton, R. A.: Satellite-observed photosynthetic trends
630 across boreal North America associated with climate and fire disturbance, *Proceedings of the National Academy of Sciences of the United States of America*, 102, 13 521–13 525, doi:10.1073/pnas.0506179102, <http://www.pnas.org/content/102/38/13521>, 2005.
- Graven, H. D., Keeling, R. F., Piper, S. C., Patra, P. K., Stephens, B. B., Wofsy, S. C., Welp, L. R., Sweeney, C., Tans, P. P., Kelley, J. J., Daube, B. C., Kort, E. A., Santoni, G. W., and Bent, J. D.:

- 635 Enhanced Seasonal Exchange of CO₂ by Northern Ecosystems Since 1960, *Science*, 341, 1085–1089, doi:10.1126/science.1239207, <http://www.sciencemag.org/content/341/6150/1085>, 2013.
- Groisman, P. Y. and Bartalev, S. A.: Northern Eurasia earth science partnership initiative (NEESPI), science plan overview, *Global and Planetary Change*, 56, 215–234, doi:10.1016/j.gloplacha.2006.07.027, <http://www.sciencedirect.com/science/article/pii/S0921818106001810>, 2007.
- 640 Groisman, P. Y., Koknaeva, V., Belokrylova, T., and Karl, T.: Overcoming biases of precipitation measurement: A history of the USSR experience, *Bulletin of the American Meteorological Society*, 72, 1725–1733, 1991.
- Gu, L., Baldocchi, D., Verma, S. B., Black, T. A., Vesala, T., Falge, E. M., and Dowty, P. R.: Advantages of diffuse radiation for terrestrial ecosystem productivity, *Journal of Geophysical Research: Atmospheres*, 107, ACL 2–1, doi:10.1029/2001JD001242, <http://onlinelibrary.wiley.com/doi/10.1029/2001JD001242/abstract>,
- 645 2002.
- Guay, K. C., Beck, P. S., Berner, L. T., Goetz, S. J., Baccini, A., and Buermann, W.: Vegetation productivity patterns at high northern latitudes: a multi-sensor satellite data assessment, *Global Change Biology*, pp. n/a–n/a, doi:10.1111/gcb.12647, <http://onlinelibrary.wiley.com/doi/10.1111/gcb.12647/abstract>, 2014.
- Harris, I., Jones, P., Osborn, T., and Lister, D.: Updated high-resolution grids of monthly climatic observations – the CRU TS3.10 Dataset, *International Journal of Climatology*, 34, 623–642, doi:10.1002/joc.3711, <http://onlinelibrary.wiley.com/doi/10.1002/joc.3711/abstract>, 2014.
- 650 Heinsch, F. A., Zhao, M., Running, S. W., Kimball, J. S., Nemani, R. R., Davis, K. J., Bolstad, P. V., Cook, B. D., Desai, A. R., and Ricciuto, D. M.: Evaluation of remote sensing based terrestrial productivity from MODIS using regional tower eddy flux network observations, *Geoscience and Remote Sensing, IEEE Transactions on*, 44, 1908–1925, 2006.
- 655 Hickler, T., Smith, B., Prentice, I. C., Mjöfors, K., Miller, P., Arneth, A., and Sykes, M. T.: CO₂ fertilization in temperate FACE experiments not representative of boreal and tropical forests, *Global Change Biology*, 14, 1531–1542, doi:10.1111/j.1365-2486.2008.01598.x, <http://onlinelibrary.wiley.com/doi/10.1111/j.1365-2486.2008.01598.x/abstract>, 2008.
- 660 Jackson, R. D., Idso, S. B., Reginato, R. J., and Pinter, P. J.: Canopy temperature as a crop water stress indicator, *Water Resources Research*, 17, 1133–1138, doi:10.1029/WR017i004p01133, <http://onlinelibrary.wiley.com/doi/10.1029/WR017i004p01133/abstract>, 1981.
- Jones, P. and Harris, I.: University of East Anglia Climatic Research Unit, CRU TS3. 21: Climatic Research Unit (CRU) Time-Series (TS) Version 3.21 of High Resolution Gridded Data of Month-by-month Variation
- 665 in Climate (Jan. 1901—Dec. 2012), NCAS British Atmospheric Data Centre, 2013.
- Jung, M., Reichstein, M., and Bondeau, A.: Towards global empirical upscaling of FLUXNET eddy covariance observations: validation of a model tree ensemble approach using a biosphere model, *Biogeosciences*, 6, 2001–2013, doi:10.5194/bg-6-2001-2009, <http://www.biogeosciences.net/6/2001/2009/>, 2009.
- Jung, M., Reichstein, M., Margolis, H. A., Cescatti, A., Richardson, A. D., Arain, M. A., Arneth, A., Bernhofer, C., Bonal, D., Chen, J., Gianelle, D., Gobron, N., Kiely, G., Kutsch, W., Lasslop, G., Law, B. E., Lindroth, A., Merbold, L., Montagnani, L., Moors, E. J., Papale, D., Sottocornola, M., Vaccari, F., and Williams, C.: Global patterns of land-atmosphere fluxes of carbon dioxide, latent heat, and sensible heat derived from eddy covariance, satellite, and meteorological observations, *Journal of Geophysical Research: Biogeosciences*, 116,

- G00J07, doi:10.1029/2010JG001566, <http://onlinelibrary.wiley.com/doi/10.1029/2010JG001566/abstract>,
675 2011.
- Kim, Y., Kimball, J., Zhang, K., Didan, K., Velicogna, I., and McDonald, K.: Attribution of divergent northern vegetation growth responses to lengthening non-frozen seasons using satellite optical-NIR and microwave remote sensing, *International Journal of Remote Sensing*, 35, 3700–3721, doi:10.1080/01431161.2014.915595, <http://dx.doi.org/10.1080/01431161.2014.915595>, 2014.
- 680 Larcher, W.: effect of environmental and physiological variables on the carbon dioxide gas exchange of trees, *Photosynthetica*, 1969.
- Larcher, W.: *Physiological plant ecology: ecophysiology and stress physiology of functional groups*, Springer, 2003.
- Leuning, R., Cleugh, H. A., Zegelin, S. J., and Hughes, D.: Carbon and water fluxes over a temperate Eucalyptus forest and a tropical wet/dry savanna in Australia: measurements and comparison with MODIS remote sensing estimates, *Agricultural and Forest Meteorology*, 129, 151–173, 2005.
- 685 Lucht, W., Prentice, I. C., Myneni, R. B., Sitch, S., Friedlingstein, P., Cramer, W., Bousquet, P., Buermann, W., and Smith, B.: Climatic Control of the High-Latitude Vegetation Greening Trend and Pinatubo Effect, *Science*, 296, 1687–1689, doi:10.1126/science.1071828, <http://www.sciencemag.org/content/296/5573/1687>,
690 2002.
- Mitchell, T. D. and Jones, P. D.: An improved method of constructing a database of monthly climate observations and associated high-resolution grids, *International Journal of Climatology*, 25, 693–712, doi:10.1002/joc.1181, <http://onlinelibrary.wiley.com/doi/10.1002/joc.1181/abstract>, 2005.
- Myneni, R. and Williams, D.: On the relationship between FAPAR and NDVI, *Remote Sensing of Environment*,
695 49, 200–211, 1994.
- Myneni, R. B., Keeling, C. D., Tucker, C. J., Asrar, G., and Nemani, R. R.: Increased plant growth in the northern high latitudes from 1981 to 1991, *Nature*, 386, 698–702, doi:10.1038/386698a0, <http://www.nature.com/nature/journal/v386/n6626/abs/386698a0.html>, 1997.
- Nash, J. E. and Sutcliffe, J. V.: River flow forecasting through conceptual models part I — A
700 discussion of principles, *Journal of Hydrology*, 10, 282–290, doi:10.1016/0022-1694(70)90255-6, <http://www.sciencedirect.com/science/article/pii/0022169470902556>, 1970.
- Natali, S. M., Schuur, E. A. G., Webb, E. E., Pries, C. E. H., and Crummer, K. G.: Permafrost degradation stimulates carbon loss from experimentally warmed tundra, *Ecology*, 95, 602–608, doi:10.1890/13-0602.1, <http://www.esajournals.org/doi/abs/10.1890/13-0602.1>, 2013.
- 705 Nemani, R. R., Keeling, C. D., Hashimoto, H., Jolly, W. M., Piper, S. C., Tucker, C. J., Myneni, R. B., and Running, S. W.: Climate-Driven Increases in Global Terrestrial Net Primary Production from 1982 to 1999, *Science*, 300, 1560–1563, doi:10.1126/science.1082750, <http://www.sciencemag.org/content/300/5625/1560>, 2003.
- Nicholls, N., Gruza, G., Jouzel, J., Karl, T., Ogallo, L., and Parker, D.: *Observed climate variability and change*,
710 Cambridge University Press, 1996.
- Overpeck, J., Hughen, K., Hardy, D., Bradley, R., Case, R., Douglas, M., Finney, B., Gajewski, K., Jacoby, G., Jennings, A., et al.: Arctic environmental change of the last four centuries, *Science*, 278, 1251–1256, 1997.

- Parida, B. R. and Buermann, W.: Increasing summer drying in North American ecosystems in response to longer nonfrozen periods, *Geophysical Research Letters*, 41, 2014GL060495, doi:10.1002/2014GL060495, 715 <http://onlinelibrary.wiley.com/doi/10.1002/2014GL060495/abstract>, 2014.
- Pettorelli, N., Vik, J. O., Mysterud, A., Gaillard, J.-M., Tucker, C. J., and Stenseth, N. C.: Using the satellite-derived NDVI to assess ecological responses to environmental change, *Trends in Ecology & Evolution*, 20, 503–510, doi:10.1016/j.tree.2005.05.011, <http://www.sciencedirect.com/science/article/pii/S016953470500162X>, 2005.
- 720 Piao, S., Wang, X., Ciais, P., Zhu, B., Wang, T., and Liu, J.: Changes in satellite-derived vegetation growth trend in temperate and boreal Eurasia from 1982 to 2006, *Global Change Biology*, 17, 3228–3239, doi:10.1111/j.1365-2486.2011.02419.x, <http://onlinelibrary.wiley.com/doi/10.1111/j.1365-2486.2011.02419.x/abstract>, 2011.
- Pinzon, J. E. and Tucker, C. J.: GIMMS 3g NDVI set and global NDVI trends, in: Second Yamal Land-Cover 725 Land-Use Change Workshop Arctic Centre (Rovaniemi, March), 2010.
- Pinzon, J. E. and Tucker, C. J.: A Non-Stationary 1981–2012 AVHRR NDVI3g Time Series, *Remote Sensing*, 6, 6929–6960, doi:10.3390/rs6086929, <http://www.mdpi.com/2072-4292/6/8/6929>, 2014.
- Raynolds, M. K., Walker, D. A., Epstein, H. E., Pinzon, J. E., and Tucker, C. J.: A new estimate of tundra-biome phytomass from trans-Arctic field data and AVHRR NDVI, *Remote Sensing Letters*, 3, 403–411, 730 doi:10.1080/01431161.2011.609188, <http://dx.doi.org/10.1080/01431161.2011.609188>, 2012.
- Reich, P. B., Peterson, D. W., Wedin, D. A., and Wrage, K.: Fire and vegetation effects on productivity and nitrogen cycling across a forest–grassland continuum, *Ecology*, 82, 1703–1719, doi:10.1890/0012-9658(2001)082[1703:FAVEOP]2.0.CO;2, [http://www.esajournals.org/doi/abs/10.1890/0012-9658\(2001\)082%5B1703:FAVEOP%5D2.0.CO%3B2](http://www.esajournals.org/doi/abs/10.1890/0012-9658(2001)082%5B1703:FAVEOP%5D2.0.CO%3B2), 735 2001.
- Reichstein, M., Falge, E., Baldocchi, D., Papale, D., Aubinet, M., Berbigier, P., Bernhofer, C., Buchmann, N., Gilmanov, T., Granier, A., Grünwald, T., Havránková, K., Ilvesniemi, H., Janous, D., Knohl, A., Laurila, T., Lohila, A., Loustau, D., Matteucci, G., Meyers, T., Miglietta, F., Ourcival, J.-M., Pumpanen, J., Rambal, S., Rotenberg, E., Sanz, M., Tenhunen, J., Seufert, G., Vaccari, F., Vesala, T., Yakir, D., and Valentini, R.: On the separation of net ecosystem exchange into assimilation and ecosystem respiration: review 740 and improved algorithm, *Global Change Biology*, 11, 1424–1439, doi:10.1111/j.1365-2486.2005.001002.x, <http://onlinelibrary.wiley.com/doi/10.1111/j.1365-2486.2005.001002.x/abstract>, 2005.
- Richards, F. and Arkin, P.: On the Relationship between Satellite-Observed Cloud Cover and Precipitation, *Monthly Weather Review*, 109, 1081–1093, doi:10.1175/1520-0493(1981)109<1081:OTRBSO>2.0.CO;2, 745 [http://journals.ametsoc.org/doi/abs/10.1175/1520-0493\(1981\)109%3C1081:OTRBSO%3E2.0.CO%3B2](http://journals.ametsoc.org/doi/abs/10.1175/1520-0493(1981)109%3C1081:OTRBSO%3E2.0.CO%3B2), 1981.
- Roderick, M. L., Farquhar, G. D., Berry, S. L., and Noble, I. R.: On the direct effect of clouds and atmospheric particles on the productivity and structure of vegetation, *Oecologia*, 129, 21–30, doi:10.1007/s004420100760, <http://link.springer.com/article/10.1007/s004420100760>, 2001.
- 750 Ruimy, A., Saugier, B., and Dedieu, G.: Methodology for the estimation of terrestrial net primary production from remotely sensed data, *JOURNAL OF GEOPHYSICAL RESEARCH-ALL SERIES-*, 99, 5263–5263, 1994.

- Running, S. W., Nemani, R. R., Heinsch, F. A., Zhao, M., Reeves, M., and Hashimoto, H.: A Continuous Satellite-Derived Measure of Global Terrestrial Primary Production, *BioScience*, 54, 547–560, doi:10.1641/0006-3568(2004)054[0547:ACSMOG]2.0.CO;2, 755 <http://bioscience.oxfordjournals.org/content/54/6/547>, 2004.
- Rötter, R. and Geijn, S. C. v. d.: Climate Change Effects on Plant Growth, Crop Yield and Livestock, *Climatic Change*, 43, 651–681, doi:10.1023/A:1005541132734, <http://link.springer.com/article/10.1023/A%3A1005541132734>, 1999.
- 760 Schaefer, K., Schwalm, C. R., Williams, C., Arain, M. A., Barr, A., Chen, J. M., Davis, K. J., Dimitrov, D., Hilton, T. W., Hollinger, D. Y., et al.: A model-data comparison of gross primary productivity: Results from the North American Carbon Program site synthesis, *Journal of Geophysical Research: Biogeosciences* (2005–2012), 117, 2012.
- Schubert, P., Lund, M., Ström, L., and Eklundh, L.: Impact of nutrients on peatland GPP estimations using 765 MODIS time series data, *Remote Sensing of Environment*, 114, 2137–2145, doi:10.1016/j.rse.2010.04.018, <http://www.sciencedirect.com/science/article/pii/S0034425710001318>, 2010.
- Sellers, P. J.: Canopy reflectance, photosynthesis and transpiration, *International Journal of Remote Sensing*, 6, 1335–1372, 1985.
- Sharp, R. E., Poroyko, V., Hejlek, L. G., Spollen, W. G., Springer, G. K., Bohnert, H. J., and Nguyen, H. T.: 770 Root growth maintenance during water deficits: physiology to functional genomics, *Journal of Experimental Botany*, 55, 2343–2351, 2004.
- Shepard, D.: A two-dimensional interpolation function for irregularly-spaced data, in: *Proceedings – 1968 ACM National Conference*, pp. 517–524, 1968.
- Shim, C., Hong, J., Hong, J., Kim, Y., Kang, M., Malla Thakuri, B., Kim, Y., and Chun, J.: Evaluation of MODIS GPP over a complex ecosystem in East Asia: A case study at Gwangneung 775 flux tower in Korea, *Advances in Space Research*, 54, 2296–2308, doi:10.1016/j.asr.2014.08.031, <http://www.sciencedirect.com/science/article/pii/S0273117714005614>, 2014.
- Sitch, S., McGuire, A. D., Kimball, J., Gedney, N., Gamon, J., Engstrom, R., Wolf, A., Zhuang, Q., Clein, J., and McDonald, K. C.: Assessing the carbon balance of circumpolar Arctic tundra using remote sensing and 780 process modeling, *Ecological applications: a publication of the Ecological Society of America*, 17, 213–234, 2007.
- Sorooshian, S., Duan, Q., and Gupta, V. K.: Calibration of rainfall-runoff models: Application of global optimization to the Sacramento Soil Moisture Accounting Model, *Water Resources Research*, 29, 1185–1194, doi:10.1029/92WR02617, <http://onlinelibrary.wiley.com/doi/10.1029/92WR02617/abstract>, 1993.
- 785 Stevens, C. J., Dise, N. B., Mountford, J. O., and Gowing, D. J.: Impact of nitrogen deposition on the species richness of grasslands, *Science*, 303, 1876–1879, 2004.
- Sun, B. and Groisman, P. Y.: Cloudiness variations over the former Soviet Union, *International Journal of Climatology*, 20, 1097–1111, 2000.
- Sun, B., Groisman, P. Y., and Mokhov, I. I.: Recent changes in cloud-type frequency and inferred increases in 790 convection over the United States and the former USSR, *Journal of Climate*, 14, 1864–1880, 2001.
- Thompson, C. C., McGuire, A. D., Clein, J. S., Iii, F. S. C., and Beringer, J.: Net Carbon Exchange Across the Arctic Tundra-Boreal Forest Transition in Alaska 1981–2000, *Mitiga-*

tion and Adaptation Strategies for Global Change, 11, 805–827, doi:10.1007/s11027-005-9016-3, <http://link.springer.com/article/10.1007/s11027-005-9016-3>, 2006.

- 795 Trenberth, K. E., Jones, P. D., Ambenje, P., Bojariu, R., Easterling, D., Klein Tank, A., Parker, D., Rahimzadeh, F., Renwick, J. A., Rusticucci, M., Soden, B., Zhai, P., Adler, R., Alexander, L., Allan, R., Baldwin, M. P., Beniston, M., Bromwich, D., Camilloni, I., Cassou, C., Cayan, D. R., Chang, E. K. M., Christy, J., Dai, A., Deser, C., Dotzek, N., Fasullo, J., Fogt, R., Folland, C., Forster, P., Free, M., Frei, C., Gleason, B., Grieser, J., Groisman, P., Gulev, S., Hurrell, J., Ishii, M., Josey, S., Källberg, P., Kennedy, J., Kiladis, 800 G., Kripalani, R., Kunkel, K., Lam, C.-Y., Lanzante, J., Lawrimore, J., Levinson, D., Liepert, B., Norris, G., Oki, T., Robertson, F. R., Rosenlof, K., Semazzi, F. H., Shea, D., Shepherd, J. M., Shepherd, T. G., Sherwood, S., Siegmund, P., Simmonds, I., Simmons, A., Thorncroft, C., Thorne, P., Uppala, S., Vose, R., Wang, B., Warren, S., Washington, R., Wheeler, M., Wielicki, B., Wong, T., and Wuertz, D.: Observations: Surface and Atmospheric Climate Change, in: *Climate Change 2007: The Physical Science Basis. Contribution of Working Group I to the Fourth Assessment Report of the Intergovernmental Panel on Climate Change*, pp. 235–336, Cambridge University Press, Cambridge, UK and NY, USA, <http://vital-test2.unige.ch/vital/access/services/Download/unige:18698/FULLTEXT>, 2007.
- Urban, M., Forkel, M., Eberle, J., Hüttich, C., Schmullius, C., and Herold, M.: Pan-Arctic Climate and Land Cover Trends Derived from Multi-Variate and Multi-Scale Analyses (1981–2012), *Remote Sensing*, 6, 2296– 810 2316, 2014.
- Walker, X. J., Mack, M. C., and Johnstone, J. F.: Stable carbon isotope analysis reveals widespread drought stress in boreal black spruce forests, *Global Change Biology*, pp. n/a–n/a, doi:10.1111/gcb.12893, <http://onlinelibrary.wiley.com/doi/10.1111/gcb.12893/abstract>, 2015.
- Wang, H., Liu, D., Lin, H., Montenegro, A., and Zhu, X.: NDVI and vegetation phenology dynamics under the influence of sunshine duration on the Tibetan plateau, *International Journal of Climatology*, pp. n/a–n/a, 815 doi:10.1002/joc.4013, <http://onlinelibrary.wiley.com/doi/10.1002/joc.4013/abstract>, 2014.
- Watson, R., Noble, I., Bolin, B., Ravindranath, N., Verardo, D., and Dokken, D.: *Land use, land-use change and forestry: a special report of the Intergovernmental Panel on Climate Change.*, Cambridge University Press, http://www.ipcc.ch/ipccreports/sres/land_use/, 2000.
- 820 Wiegand, C. L. and Namken, L. N.: Influences of Plant Moisture Stress, Solar Radiation, and Air Temperature on Cotton Leaf Temperature¹, *Agronomy Journal*, 58, 582, doi:10.2134/agronj1966.00021962005800060009x, <https://www.agronomy.org/publications/aj/abstracts/58/6/AJ0580060582>, 1966.
- Williams, M., Rastetter, E. B., Van der Pol, L., and Shaver, G. R.: Arctic canopy photosynthetic efficiency enhanced under diffuse light, linked to a reduction in the fraction of the canopy in deep shade, *New Phytologist*, 825 202, 1267–1276, doi:10.1111/nph.12750, <http://onlinelibrary.wiley.com/doi/10.1111/nph.12750/abstract>, 2014.
- Willmott, C. J., Rowe, C. M., and Philpot, W. D.: Small-Scale Climate Maps: A Sensitivity Analysis of Some Common Assumptions Associated with Grid-Point Interpolation and Contouring, *The American Cartographer*, 830 12, 5–16, 1985.
- Wright, S.: Correlation and causation, *Journal of agricultural research*, 20, 557–585, 1921.

- Yapo, P. O., Gupta, H. V., and Sorooshian, S.: Automatic calibration of conceptual rainfall-runoff models: sensitivity to calibration data, *Journal of Hydrology*, 181, 23–48, doi:10.1016/0022-1694(95)02918-4, <http://www.sciencedirect.com/science/article/pii/0022169495029184>, 1996.
- 835 Yi, C., Ricciuto, D., Li, R., Wolbeck, J., Xu, X., Nilsson, M., Aires, L., Albertson, J. D., Ammann, C., Arain, M. A., Araujo, A. C. d., Aubinet, M., Aurela, M., Barcza, Z., Barr, A., Berbigier, P., Beringer, J., Bernhofer, C., Black, A. T., Bolstad, P. V., Bosveld, F. C., Broadmeadow, M. S. J., Buchmann, N., Burns, S. P., Cellier, P., Chen, J., Chen, J., Ciais, P., Clement, R., Cook, B. D., Curtis, P. S., Dail, D. B., Dellwik, E., Delpierre, N., Desai, A. R., Dore, S., Dragoni, D., Drake, B. G., Dufrene, E., Dunn, A., Elbers, J., Eugster, W., Falk, M., Feigenwinter, C., Flanagan, L. B., Foken, T., Frank, J., Fuhrer, J., Gianelle, D., Goldstein, A.,
- 840 Goulden, M., Granier, A., Grunwald, T., Gu, L., Guo, H., Hammerle, A., Han, S., Hanan, N. P., Haszpra, L., Heinesch, B., Helfter, C., Hendriks, D., Hutley, L. B., Ibrom, A., Jacobs, C., Johansson, T., Jongen, M., Katul, G., Kiely, G., Klumpp, K., Knohl, A., Kolb, T., Kutsch, W. L., Lafleur, P., Laurila, T., Leuning, R., Lindroth, A., Liu, H., Loubet, B., Manca, G., Marek, M., Margolis, H. A., Martin, T. A., Massman, W. J.,
- 845 Matamala, R., Matteucci, G., McCaughey, H., Merbold, L., Meyers, T., Migliavacca, M., Miglietta, F., Mission, L., Molder, M., Moncrieff, J., Monson, R. K., Montagnani, L., Montes-Helu, M., Moors, E., Moureaux, C., Mukelabai, M. M., Munger, J. W., Myklebust, M., Nagy, Z., Noormets, A., Oechel, W., Oren, R., Pallardy, S. G., U, K. T. P., Pereira, J. S., Pilegaard, K., Pinter, K., Pio, C., Pita, G., Powell, T. L., Rambal, S., Randerson, J. T., Randow, C. v., Rebmann, C., Rinne, J., Rossi, F., Roulet, N., Ryel, R. J., Sagerfors, J.,
- 850 Saigusa, N., Sanz, M. J., Mugnozza, G.-S., Schmid, H. P., Seufert, G., Siqueira, M., Soussana, J.-F., Starr, G., Sutton, M. A., Tenhunen, J., Tuba, Z., Tuovinen, J.-P., Valentini, R., Vogel, C. S., Wang, J., Wang, S., Wang, W., Welp, L. R., Wen, X., Wharton, S., Wilkinson, M., Williams, C. A., Wohlfahrt, G., Yamamoto, S., Yu, G., Zampedri, R., Zhao, B., and Zhao, X.: Climate control of terrestrial carbon exchange across biomes and continents, *Environmental Research Letters*, 5, 034007, doi:10.1088/1748-9326/5/3/034007, <http://iopscience.iop.org/1748-9326/5/3/034007>, 2010.
- 855 Yi, Y., Kimball, J. S., Jones, L. A., Reichle, R. H., Nemani, R., and Margolis, H. A.: Recent climate and fire disturbance impacts on boreal and arctic ecosystem productivity estimated using a satellite-based terrestrial carbon flux model, *Journal of Geophysical Research: Biogeosciences*, 118, 606–622, doi:10.1002/jgrg.20053, <http://onlinelibrary.wiley.com/doi/10.1002/jgrg.20053/abstract>, 2013.
- 860 Yi, Y., Kimball, J. S., and Reichle, R. H.: Spring hydrology determines summer net carbon uptake in northern ecosystems, *Environmental Research Letters*, 9, 064003, doi:10.1088/1748-9326/9/6/064003, <http://iopscience.iop.org/1748-9326/9/6/064003>, 2014.
- Yuan, W., Liu, S., Zhou, G., Zhou, G., Tieszen, L. L., Baldocchi, D., Bernhofer, C., Gholz, H., Goldstein, A. H., Goulden, M. L., Hollinger, D. Y., Hu, Y., Law, B. E., Stoy, P. C., Vesala, T., and Wofsy, S. C.: Deriving a light use efficiency model from eddy covariance flux data for predicting daily gross primary production across biomes, *Agricultural and Forest Meteorology*, 143, 189–207, doi:10.1016/j.agrformet.2006.12.001, <http://www.sciencedirect.com/science/article/pii/S0168192306003881>, 2007.
- 865 Zhang, G., Zhang, Y., Dong, J., and Xiao, X.: Green-up dates in the Tibetan Plateau have continuously advanced from 1982 to 2011, *Proceedings of the National Academy of Sciences*, 110, 4309–4314, doi:10.1073/pnas.1210423110, <http://www.pnas.org/content/110/11/4309>, 2013.
- 870

- Zhang, K., Kimball, J. S., Hogg, E. H., Zhao, M., Oechel, W. C., Cassano, J. J., and Running, S. W.: Satellite-based model detection of recent climate-driven changes in northern high-latitude vegetation productivity, *Journal of Geophysical Research: Biogeosciences*, 113, G03 033, doi:10.1029/2007JG000621, <http://onlinelibrary.wiley.com/doi/10.1029/2007JG000621/abstract>, 2008.
- 875 Zhou, L., Tucker, C. J., Kaufmann, R. K., Slayback, D., Shabanov, N. V., and Myneni, R. B.: Variations in northern vegetation activity inferred from satellite data of vegetation index during 1981 to 1999, *Journal of Geophysical Research: Atmospheres*, 106, 20 069–20 083, doi:10.1029/2000JD000115, <http://onlinelibrary.wiley.com/doi/10.1029/2000JD000115/abstract>, 2001.
- Zhu, Z., Bi, J., Pan, Y., Ganguly, S., Anav, A., Xu, L., Samanta, A., Piao, S., Nemani, R. R., and Myneni, 880 R. B.: Global Data Sets of Vegetation Leaf Area Index (LAI)_{3g} and Fraction of Photosynthetically Active Radiation (FPAR)_{3g} Derived from Global Inventory Modeling and Mapping Studies (GIMMS) Normalized Difference Vegetation Index (NDVI_{3g}) for the Period 1981 to 2011, *Remote Sensing*, 5, 927–948, doi:10.3390/rs5020927, <http://www.mdpi.com/2072-4292/5/2/927>, 2013.

Table 1: Biome Property Look-Up Table (BPLUT) for GPP algorithm with ERA-Interim and NDVI as inputs. The full names for the University of Maryland land cover classes (UMD_VEG_LC) in the MOD12Q1 dataset are Evergreen Needleleaf Forest (ENF), Evergreen Broadleaf Forest (EBF), Deciduous Needleleaf Forest (DNF), Deciduous Broadleaf Forest (DBF), Mixed forests (MF), Closed Shrublands (CS), Open Shrublands (OS), Woody Savannas (WS), Savannas (SVN), Grassland (GRS), and Croplands (Crop).

UMD_VEG_LC	ENF	EBF	DNF	DBF	MF	CS	OS	WS	SVN	GRS	Crop
FPAR_scale	0.8326	0.8565	0.8326	0.8565	0.84455	0.7873	0.834	0.8437	0.8596	0.8444	0.8326
FPAR_offset	0.0837	-0.0104	0.0837	-0.0104	0.03665	-0.0323	-0.0107	-0.0183	-0.0044	-0.0297	-0.0104
LUEmax (kgC/m ² /d/MJ)	0.001055	0.00125	0.001055	0.00125	0.001138	0.00111	0.00111	0.001175	0.001175	0.0012	0.001055
T _{mn_min} (°C)	-8	-8	-8	-6	-7	-8	-8	-8	-8	-8	-8
T _{mn_max} (°C)	8.31	9.09	10.44	9.94	9.5	8.61	8.8	11.39	11.39	12.02	12.02
VPD _{min} (Pa)	500	1800	500	500	500	500	500	434	300	752	500
VPD _{max} (Pa)	4000	4000	4160	4160	2732	6000	4455	5000	3913	5500	5000

Fluxnet Site Code	Site Name	Period	Lat / Lon	IGBP Land Cover	Dominant PFT	Principal Investigator
RU-Cok	Chokurdakh / Kytalyk	2003 – 2005	70.83 / 147.49	Open Shrublands	Shrub	Han Dolman, Free Univ. Amsterdam
RU-Fyo	Fedorovskoje	1998 – 2006	56.46 / 32.92	Mixed Forests	Evergreen Needleleaf Trees	Andrej Varlagin, Russian Academy of Sciences
RU-Ha1	Ubs Nur-Hakasija	2002 – 2004	54.73 / 90.00	Grasslands	Grass	Dario Papale, University of Tuscia
RU-Zot	Zotino	2002 – 2004	60.80 / 89.35	Woody Savannas	Evergreen Needleleaf Trees	Corinna Rebmann, Max-Planck-Institute for Biogeochemistry

FI-Hyy	Hyytiala	1996 – 2006	61.85 / 24.29	Evergreen Needleleaf Forest	Evergreen Needleleaf Trees	Timo Vesala, University of Helsinki
FI-Kaa	Kaamanen wetland	2000 – 2006	69.14 / 27.30	Woody Savannas	Grass	Tuomas Lau- rila, Finnish Meteorologi- cal Institute
FI-Sod	Sodankyla	2000 – 2006	67.36 / 26.64	Evergreen Needleleaf Forest	Evergreen Needleleaf Trees	Tuomas Lau- rila, Finnish Meteorologi- cal Institute
CZ-BK1	Bily Kriz- Beskidy Mountains	2000 – 2006	49.50 / 18.54	Evergreen Needleleaf Forest	Evergreen Needleleaf Trees	Marian Pavelka
HU-Bug	Bugacpuszta	2002 – 2006	46.69 / 19.60	Croplands	Cereal crop	Zoltan Nagy, Szent István University
HU-Mat	Matra	2004 – 2006	47.84 / 19.73	Croplands	Cereal crop	Zoltan Nagy, Szent István University

Table 2: Details of the flux towers whose GPP data have been used to validate the satellite NDVI based GPP data. The spatial distribution of these flux towers are shown in Figure 1.

Table 3: Validation of GIMMS3g and VIP GPP datasets along with their ensemble mean using flux tower GPP from ten flux tower sites across northern Eurasia. The spatial distribution of the flux tower sites is shown in Fig. 1. Validation was carried out using: (1) Pearson’s product moment correlation. It is a measure of the linear dependence between the simulated and observed GPP and its value ranges from -1 to $+1$ where 0 is no correlation and $-1/+1$ is total negative or positive correlation; (2) percent bias, which measures the average tendency of the simulated values to be larger or smaller than their observed ones. The optimal value is 0.0 with low-magnitude values indicating accurate model simulations. Positive values indicate overestimations and vice versa (Yapo et al., 1996; Sorooshian et al., 1993); (3) Nash–Sutcliffe model efficiency coefficient (Nash and Sutcliffe, 1970). Its values range from $-\infty$ to 1 . An efficiency of 1 corresponds to a perfect match of model simulated GPP to the observed data. An efficiency of 0 indicates that the model predictions are as accurate as the mean of the observed data, whereas an efficiency less than zero occurs when the observed mean is a better predictor than the model or, in other words, when the residual variance (between modeled and observed values), is larger than the data variance (between observed values and the observed mean). Essentially, the closer the model efficiency is to 1 , the more accurate the model is.

Correlation (R)	GIMMS GPP	VIP GPP	GPPsat (ensemble mean)
Annual	0.71	0.68	0.70
Spring	0.82	0.81	0.81
Summer	0.72	0.64	0.69
Fall	0.64	0.67	0.66
Percent bias	GIMMS GPP	VIP GPP	GPPsat (ensemble mean)
Annual	-16.9 %	-19.7 %	-18.3 %
Spring	-9.1 %	-17.3 %	-13.2 %
Summer	1.9 %	-2.1 %	-0.1 %
Fall	-35.1 %	-28.3 %	-31.7 %
Nash–Sutcliffe Efficiency	GIMMS GPP	VIP GPP	GPPsat (ensemble mean)
Annual	0.36	0.29	0.33
Spring	0.64	0.57	0.61
Summer	0.46	0.40	0.44
Fall	0.13	0.27	0.21

Table 4: Trend statistics for annual monthly averages of environmental variables. The 1st and 2nd columns list the fraction of the region with significant (95 % significance level) positive trends and negative trends respectively. The 3rd column is the regional mean trend of the variables per decade. The 4th column is the coefficient of variation, estimated as the distribution mean divided by the standard deviation.

Environmental Driver	Positive trend (% of area)	Negative trend (% of area)	Trend 10 yr ⁻¹ (regional mean)	Coefficient of Variation
Temperature	50.9 %	0 %	0.39 °C	0.53
Precipitation	15.2 %	4.5 %	0.61 mm month ⁻¹	3.0
Cloudiness	7.9 %	16.9 %	-0.18 % of grid cell	4.2
Burnt Area	0.7 %	0.3 %	-0.88 hectares	20.6

Table 5: Medians of the distributions of the relative partial significant contribution (R^2 – 95% significance) of each de-trended environmental variable (except fire) of each season to the inter-annual variability in de-trended annual GPP (GPPsat). In each case the total contribution may not add up to 100%. In these cases the factors behind the unexplained attribution are not identified.

Environmental variable	Annual	Spring	Summer	Autumn
Temperature	26.1 %	26.5 %	37.7 %	19.9 %
Precipitation	22.9 %	20.7 %	20.7 %	17.9 %
Cloudiness	18.9 %	18.3 %	19.3 %	18.8 %

Table 6: Connection between annual GPP of northern Eurasia (GPPsat) and summer values of environmental variables shown as percentage of the study area with statistically significant (95 % significance level) positive and negative partial correlation coefficients.

Environmental Variable	GPP (ensemble mean)	
	Positive	Negative
Temperature	61.7 %	2.4 %
Precipitation	3.9 %	15.9 %
Cloudiness	1.3 %	9.5 %

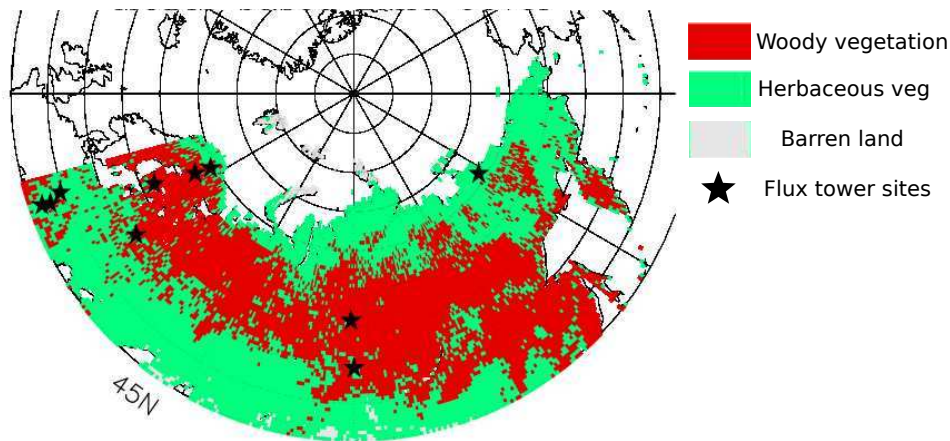


Figure 1: Simplified land cover for northern Eurasia for year 2007 overlaid with the spatial distribution of the ten flux tower sites whose GPP (Gross Primary Productivity) data was used to validate the GPP data derived from satellite NDVI (Normalized Difference Vegetation Index). For our statistical analysis, we show the distribution of two fundamental types of vegetation types: (i) herbaceous, i.e. without woody stems, which includes tundra in the north and grasslands (Eurasian Steppe) to the south; (ii) wooded, i.e. plants with wood as it's structural tissue, which includes the boreal forests appearing in the middle and extend from the western to the eastern boundary. This land cover map has been derived from the Moderate Resolution Imaging Spectroradiometer (MODIS) Type 5 Land Cover Product (Friedl et al., 2002). The details of the flux tower sites are listed in Table 4.

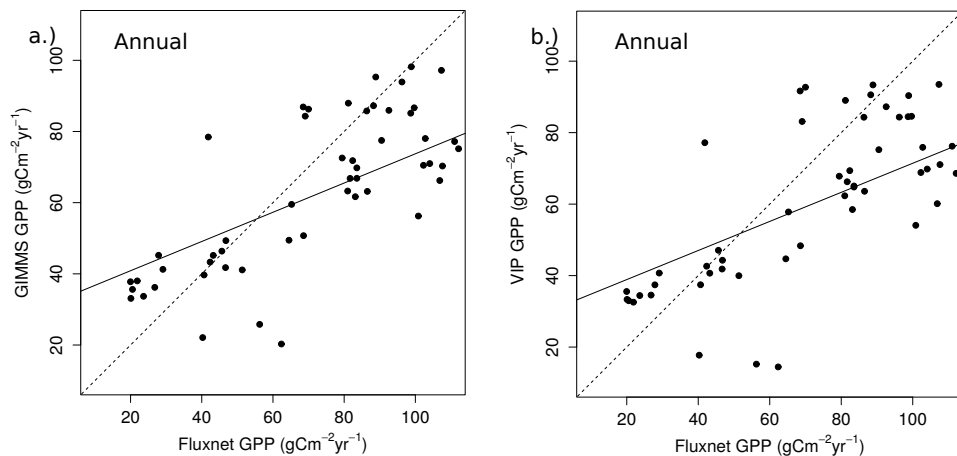


Figure 2: Relationship between the annual GPP recorded at the flux tower sites and the corresponding values of the satellite derived GPP. The black solid line is the line of best fit and helps better understand the relationship between the two. The dashed-line is the 1:1 line and demonstrates how much the relationship between the two sets of values deviate from the 1:1 perfect relationship.

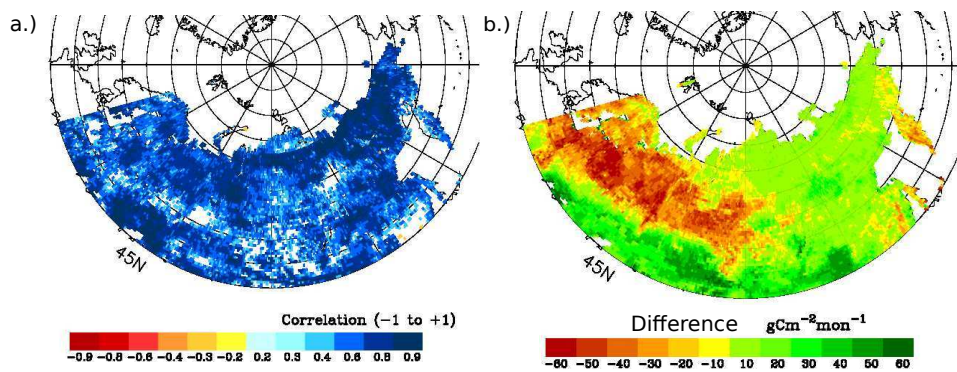


Figure 3: Spatially explicit validation of GPPsat using upscaled FLUXNET observations. **(a.)** is the correlation map and displays the statistically significant (95% level) correlations between the two sets of values of annual GPP for the period of 1982–2010. **(b.)** is the difference between the 29-year mean of GPPsat and upscaled FLUXNET database with negative values demonstrating an underestimation of GPPsat and vice-versa.

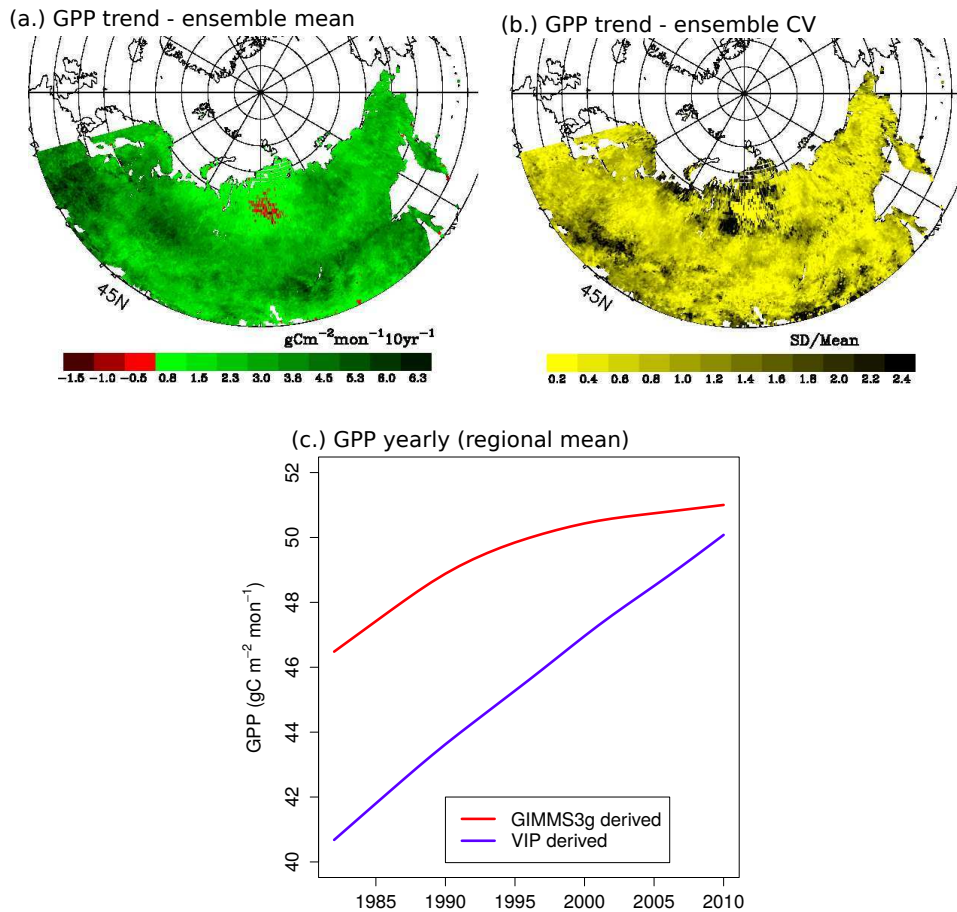


Figure 4: Change in annual GPP for GPPsat over the period 1982–2010. **(a)** is the trend map for GPPsat, i.e. the ensemble mean (of two GPP datasets). Shades of green represent a positive trend and shades of red represent a negative trend. The trends have been derived from a linear least squares fit to the GPP time series for GIMMS3g and VIP datasets. Trend values represent the rate of change of productivity per decade ($\text{g C(Carbon) m}^{-2} \text{ month}^{-1} 10 \text{ yr}^{-1}$). **(b)** is the uncertainty map (uncertainty due to the use of two GPP datasets) represented by computing the coefficient of variation (CV). Darker values represent higher uncertainty and vice-versa. **(c)** shows yearly change in the regional average GPP for the datasets derived from the GIMMS3g (red) and VIP (blue) NDVI datasets. The inter-annual variation is smoothed using a smoothing spline using a smoothing parameter of 0.8.

GPPsat trend

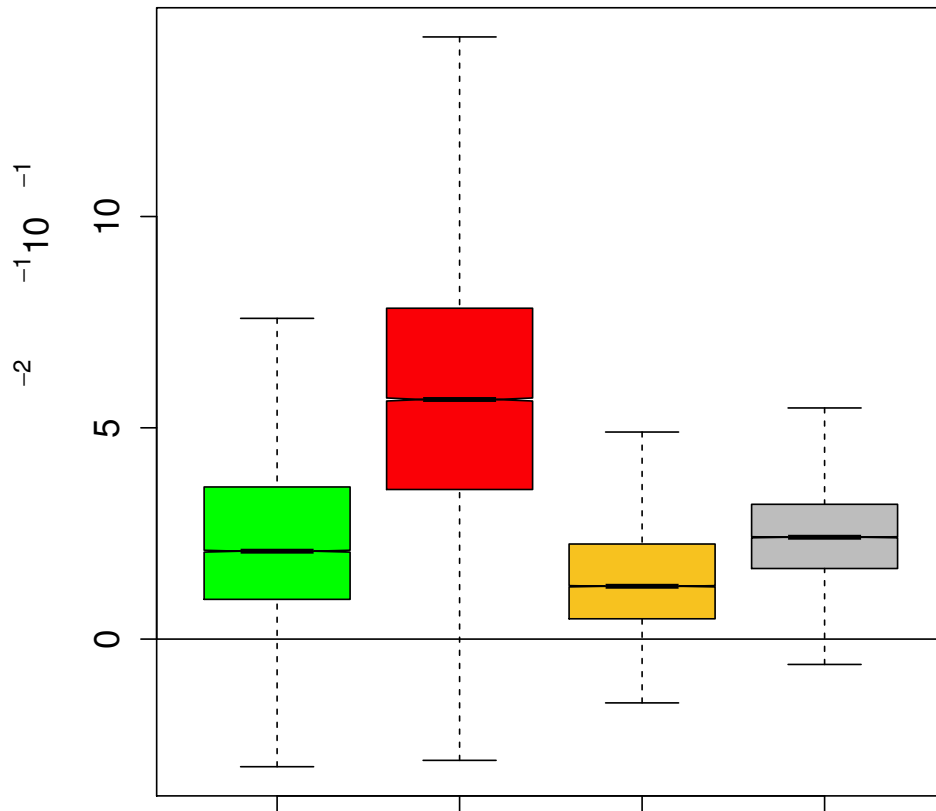


Figure 5: Box plot showing grid distributions of seasonal GPP trends for GPPsat. The GPP trends are expressed in $\text{g C m}^{-2} \text{ month}^{-1} 10 \text{ yr}^{-1}$. The black band and middle notch represent the 2nd quartile or median, box extents mark the 25th (1st quartile) and 75th (3rd quartile) percentiles. Whiskers extend from the smallest non-outlier value to the largest non-outlier value. The colors, green, red, orange and gray represent spring, summer, autumn and annual seasonal trends respectively. As described in Sect. 2.1.2, GPP trends for winter have not been assessed in this study.

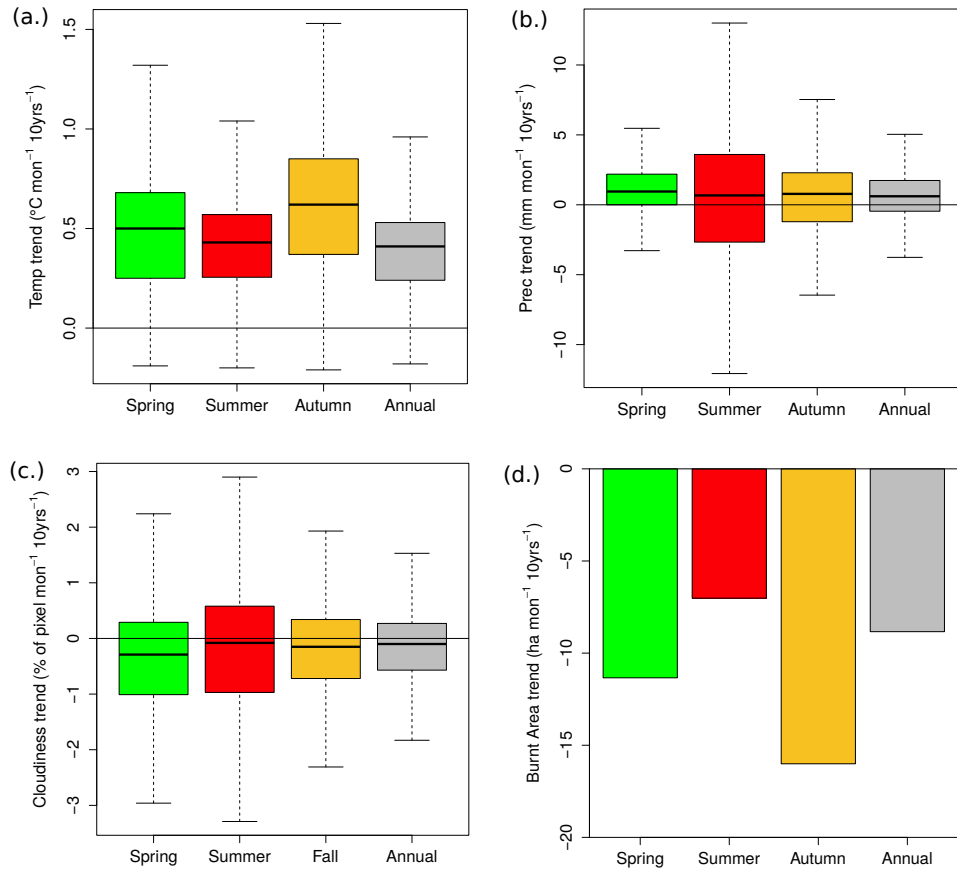


Figure 6: Change in the environmental variables over the period of study represented by seasonal trends. **(a–c)** show distribution of 2 m air temperature, precipitation and cloud cover respectively for the period 1982–2010, **(d)** illustrates seasonal trends of total burnt area for the period 1997–2011. The temperature, precipitation and cloud cover data are taken from the Climatic Research Unit (CRU TS 3.21) dataset (Harris et al., 2014). Burnt area data from the Global Fire Emissions Database (GFED) (Giglio et al., 2010).

Seasonal correlation comparison

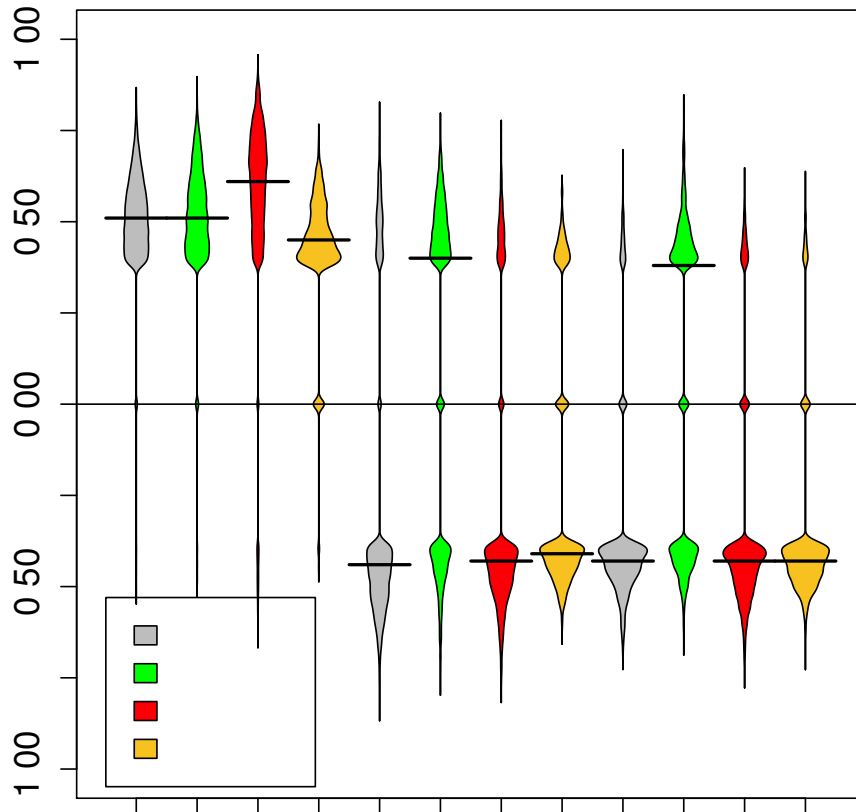


Figure 7: Bean plots of the multi-modal distribution for significant (95% significance) partial correlation between annual de-trended GPP (GPPsat) and the values of each de-trended environmental variable after eliminating the influence of the other variables. A bean plot is an alternative to the box plot and is fundamentally a one dimensional scatter plot. Here it is preferred over a box plot as it helps to visualize a multi-modal distribution. The thickness of a 'bean' is a function of the frequency of the specific value, that is the thicker a 'bean' is for a value, the relatively higher is the number of grid-points having that value. The values shown are the Pearson's correlation coefficients which are based on the linear least squares trend fit. Correlation values range from -1 to $+1$. Values closer to -1 or $+1$ indicates strong correlation while those closer to 0 indicates weak correlation. The color of the box indicates the season of the environmental variable being investigated (Annual = grey; Spring = green, Summer = red; Autumn = amber). The short horizontal black lines for each 'bean' is the median of that distribution.

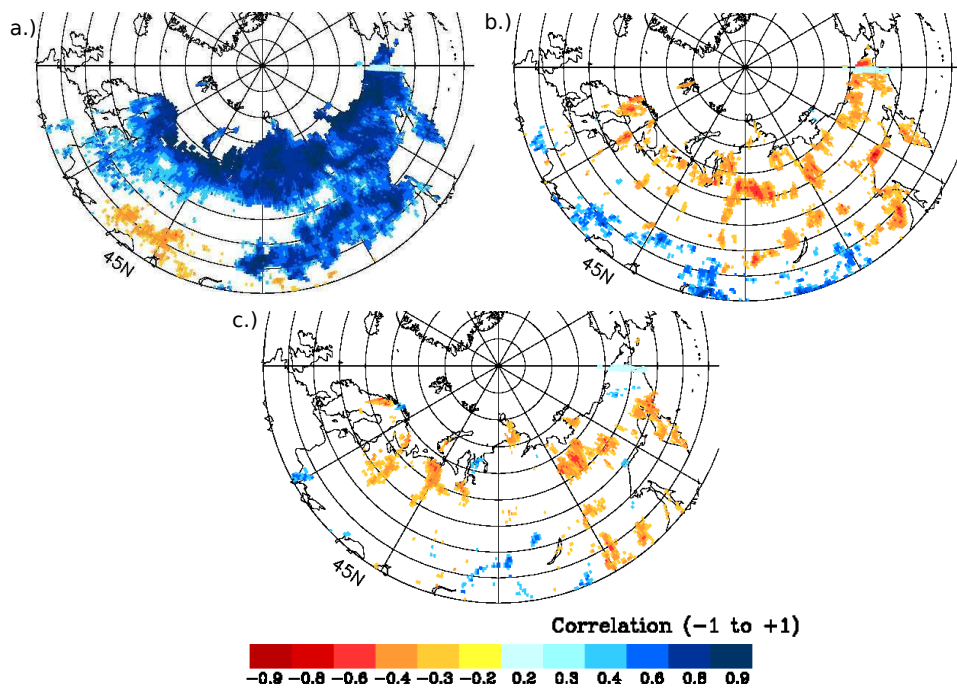


Figure 8: Spatial distribution of statistically significant (95 % significance level) partial correlation between de-trended annual GPP (GPPsat) and de-trended summer values of environmental variables **(a)** temperature, **(b)** precipitation and **(c)** cloud cover. Negative correlations shown with shades of red and positive shown in shades of blue.

Driver-Driver correlation

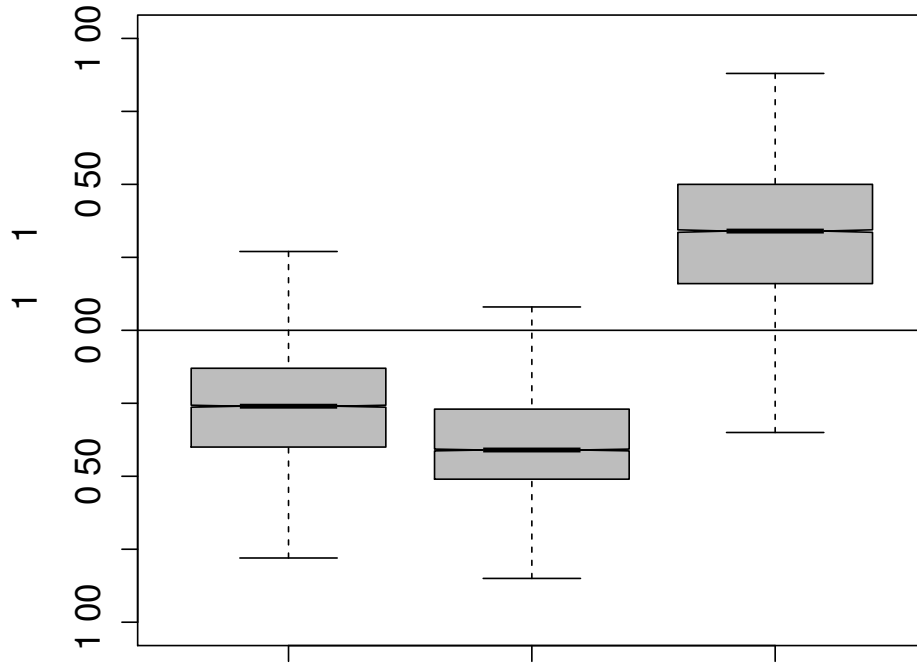


Figure 9: Box plots of the distribution for correlation between de-trended values of each environmental variable. The location of the box and in particular the median on the y axis, on either side of the zero line reveals the predominant sign of the correlation.