

Responses to comments

Reply to Dr. Williams, Associate Editor

(1) There appears to be an error in the abstract's statement: "... areal expansion of forests was a larger contributor to C sinks than forest growth for all forests... (74.6% vs. 25.4% for all forests, ..)". This cannot be correct given the numbers in Figure 5. Density and area each contribute equally to the total C sink in forest biomass in China (49.6% vs. 50.4%). The same error appears at line 161 to 164. I wonder if percentages were added over regions with different forested areas instead of adding absolute C numbers over regions and then calculating percentages, which is the correct way of computing total contributions. Whatever the case, this must be corrected before the work can be accepted for publication.

Tg C per 30 yrs	density	area	total
planted	309.1	508.5	817.6
natural	538.8	353.3	892.1
all	847.9	861.8	1709.7
% of relative contributions	density	area	Total
planted	37.8%	62.2%	100%
natural	60.4%	39.6%	100%
all	49.6%	50.4%	100%

Reply: Sorry for the confusions about Fig. 5 .

Using CFID and BEF method, the areas and carbon stocks of China's forests were firstly estimated at provincial level, and then the provincial estimates were accumulated for each region (6 regions in Fig. 1) and for the whole country, while the carbon density was carbon stock per forest area (defined as the value of carbon stock divided by forest area). The relative contributions (%) were calculated by adding absolute C numbers over regions instead of adding percentages over regions. Consistently, for all forests (natural forest and planted forest), the relative contributions were also calculated by adding C numbers of planted and natural forests instead of averaging their percentages.

For details, the relative contributions (%) were calculated by the change rates of forest area (a) and carbon density (d) (Eq.1)

$$R_a(\%) = a/m \times 100; R_d(\%) = d/m \times 100 \quad (I)$$

Then, the carbon sinks attributing to areal expansion (M_a) or growth in forest density (M_d) was derived from the multiplication of the relative contribution (%) and the total carbon sinks (ΔM) (Eq.2). Using this method, we calculated the relative contributions of areal expansion and growth in density to carbon sinks for all, planted and natural forests of China (Table 1).

$$M_a = R_a(\%) \times \Delta M; \quad M_d = R_d(\%) \times \Delta M \quad (2)$$

However, for all forests, the carbon sinks attributing to areal area expansion (M_a) or growth in density (M_d) are not equal to the sum of which in planted and natural forest, because while adding the variables (i.e., area, C stock) of these two forest types together, the relative contributions (%) would change along with the variation of ***a*** and ***d*** (Table I).

Over the study period, China's forests had increased in both forest area and biomass carbon density, and for planted and natural forests, the size of ***a*** vs. ***d*** were 3.18 %yr⁻¹ vs. 1.93 yr⁻¹ and 0.27 %yr⁻¹ vs. 0.41 % yr⁻¹, respectively (Table I). However, compared with planted forests, natural forests were much larger in forest area (10755×10⁴ha vs. 1595×10⁴ha), but lower in the relative contribution of areal expansion (39.6% vs. 62.2%). Besides the fast areal expansion of planted forests, all these factors had contributed to a much slower increase in forest density than forest area (0.29 %yr⁻¹ vs. 0.85 %yr⁻¹) for all forests, thus resulted in a higher relative contribution in areal expansion than growth in density to carbon sinks (74.6% vs. 25.4%)(Table I).

Similarly, for all forests, the relative contribution was not equal to the average of which in planted and natural forests as you have commented, where areal expansion and growth in density had contributed equally to the forest biomass carbon sink of China (49.6% vs. 50.4%)(Eq. 3).

$$R_a(\%) = 100 \times (62.23 + 37.77) / 2; \quad R_d(\%) = 100 \times (39.62 + 60.38) / 2;$$

or

$$R_a(\%) = 100 \times (508.83 + 353.45) / 2; \quad R_d(\%) = 100 \times (308.78 + 538.69) / 2 \quad (3)$$

In the early version of MS, the pie chart of Fig. 5 may bring some confusions. So following you suggestions, we changed this pie chart with the histogram in the revised MS. We have also carefully checked the figures of the revised MS to avoid errors.

Fig. 5. Summary of the forest biomass carbon accumulation induced by areal expansion and increase in carbon density for natural and planted forests of China in the period 1977–2008.

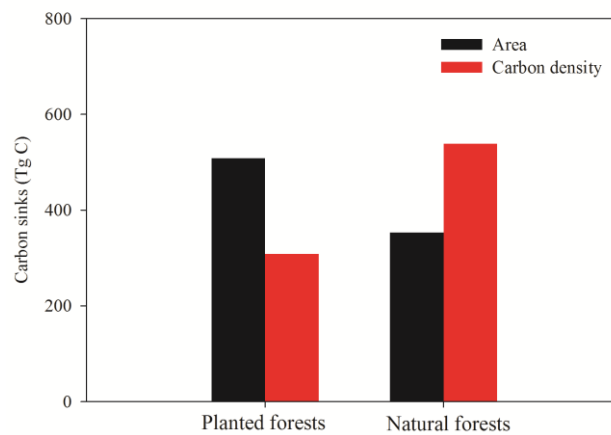


Table 1. Summary of forest variables for all, planted and natural forests between the forest inventory periods of 1977-1981 and 2004-2008

	1977-1981			2004-2008		
	Area (10 ⁴ ha)	Density (Mg C ha ⁻¹)	Carbon stock (Tg C)	Area (10 ⁴ ha)	Density (Mg C ha ⁻¹)	Carbon stock (Tg C)
All forests	12350	38.2	4717.4	15558	41.3	6427.1
Planted forests	1595	15.6	249.5	3999	26.7	1067.1
Natural forests	10755	41.5	4467.8	11559	46.4	5360.0
	a (% yr ⁻¹)	d (% yr ⁻¹)	R_a (%)	R_d (%)	M_a (Tg C)	M_d (Tg C)
All forests	0.85	0.29	74.6	25.4	1275.5	434.2
Planted forests	3.18	1.93	62.2	37.8	508.8	308.8
Natural forests	0.27	0.41	39.6	60.4	353.5	538.7

* a , change rate of forest area, d , change rate of forest density, $R(a)$, relative contribution of areal expansion to carbon sink, $R(d)$, relative contribution of forest regrowth to carbon sink, M_a carbon sinks attributing to areal area expansion, M_d carbon sinks attributing to growth in density

List of changes

1. Line 34, change the number 62.4% to 62.2% .
2. Line 488, replace the pie chart with the revised histogram (Fig.5)

The relative contributions of forest growth and areal expansion to forest biomass carbon

Peng Li^{a#}, Jiangling Zhu^{a#}, Huifeng Hu^b, Zhaodi Guo^{a,c}, Yude Pan^d, Richard Birdsey^d, Jingyun Fang^{a,*}

^a Department of Ecology, College of Urban and Environmental Sciences, and Key Laboratory for Earth Surface Processes, Ministry of Education, Peking University, Beijing 100871, China

^b State Key Laboratory of Vegetation and Environmental Change, Institute of Botany, Chinese Academy of Sciences, Beijing 100093, China

^c National Satellite Meteorological Center, China Meteorological Administration, Beijing 100081, China

^d U.S. Department of Agriculture Forest Service, Newtown Square, PA 19073, USA

[#] Both authors equally contributed to this work

Corresponding author:

Name: Jingyun Fang

E-mail: jyfang@urban.pku.edu.cn

TEL: 86-10-62765578

FAX: 86-10-62756560

ABSTRACT

Forests play a leading role in regional and global terrestrial carbon (C) cycles. Changes in C sequestration within forests can be attributed to areal expansion (increase in forest area) and forest growth (increase in biomass density). Detailed assessment of the relative contributions of areal expansion and forest growth to C sinks is crucial to reveal the mechanisms that control forest C sinks and is helpful for developing sustainable forest management policies in the face of climate change. Using the Forest Identity concept and forest inventory data, this study quantified the spatial and temporal changes in the relative contributions of forest areal expansion and increased biomass growth to China's forest biomass C sinks from 1977 to 2008. Over the last 30 years, the areal expansion of forests was a larger contributor to C sinks than forest growth for all forests and planted forests in China (74.6% vs. 25.4% for all forests, and 62.24% vs. 37.8% for plantations). However, for natural forests, forest growth made a larger contribution than areal expansion (60.4% vs. 39.6%). The relative contribution of forest growth of planted forests showed an increasing trend from an initial 25.3% to 61.0% in the later period of 1998 to 2003, but for natural forests, the relative contributions were variable without clear trends owing to the drastic changes in forest area and biomass density over the last 30 years. Our findings suggest that afforestation can continue to increase the C sink of China's forests in the future subject to sustain forest growth after establishment of plantation.

Keywords:

biomass density, biomass expansion factor, carbon sink, forest area, forest growth, forest identity

1. Introduction

As the largest terrestrial ecosystem, forests occupy around 30% of the global land surface area (Bonan, 2008; Pan et al., 2013) and play a dominant role in regional and global carbon (C) cycles because of their huge capacity for C storage and high productivity (Leith and Whittaker, 1975; Malhi et al., 2002; Pan et al., 2011). Forests can be sources of atmospheric CO₂ following anthropogenic and natural disturbances, but can also function as C sinks to sequester or conserve large quantities of C during regrowth after disturbances (Brown et al., 1996, 1999; Brown and Schroeder, 1999; Hu and Wang, 2008; Pan et al., 2011). Therefore, investigation of the possible mechanisms of forest C dynamics is of scientific and political importance (Watson et al., 2000; Fang et al., 2001, 2014a, b; Janssens et al., 2003; Nabuurs et al., 2003; Birdsey et al., 2006; McKinley et al., 2011).

China has the fifth-largest forest area of any country in the world (Ministry of Forest of China, 2009) and encompasses a variety of forest biomes, from boreal forests in the north to subtropical/tropical evergreen broadleaf forests in the south (Fang et al., 2010). With the implementation of national afforestation and reforestation programs since the late 1970s, such as the Three-north Protective Forest Program, the Natural Forest Conservation Program, and the Wetland Restoration Program, forest ecosystems in China are credited with making a significant contribution to regional and global C sinks in recent decades (Fang et al., 2001, 2014a; Fang & Chen, 2001; Lei, 2005; Xu et al., 2010; Pan et al., 2011; Guo et al., 2013). Based on the biomass expansion factor (BEF) method and China's forest inventory data, Guo et al. (2013) estimated the spatio-temporal changes in the forest biomass C sink from 1977 to 2008 and concluded that the annual biomass C sink (70.2 Tg C year⁻¹, 1 Tg = 10¹² g) offset 7.8% of the contemporary CO₂ emissions in the country.

In general, increased forest biomass C sinks are driven by forest areal expansion and forest regrowth. The Forest Identity concept, developed for separating the variables of change in

forest area, biomass and C densities (Kauppi et al. 2006, Waggoner, 2008) , is useful to develop the method to estimate the change in forest biomass C stock driven by different causes. Using the Forest Identity concept, Shi et al. (2011) evaluated the status of change in China's forests and showed that the increase in C sequestration was attributable to the increase in forest area and growing stock density over the last three decades. More recently, to explore the mechanisms that drive forest C sinks in East Asia, Fang et al. (2014a) used the Forest Identity approach to estimate the relative contributions of changing forest area and forest C density to the forest biomass C sink in China, Japan and South Korea. These studies found that the relative contributions of the changing factors varied among countries and forest origin (planted vs. natural forests). Specifically, it was reported that forest areal expansion made a larger contribution to C sinks than increased biomass density for all forests. However, the study of Fang et al. (2014a) did not analyze the spatial and temporal variability in the relative contributions of forest areal expansion and increased biomass density to China's forest C sinks. In this study, we used the Forest Identity concept and forest inventory data to quantify in detail the spatial and temporal difference in the relative contributions of forest areal expansion and increased biomass density to China's forest C sinks during the past 30 years. Furthermore, we discussed the primary reasons for reduced biomass C stocks of natural forests in some provinces of China.

2. Data and Methods

2.1. Forest inventory data

China's forest inventory data (CFID) for the periods 1977–1981, 1984–1988, 1989–1993, 1994–1998, 1999–2003, and 2004–2008 were used in this study (Chinese Ministry of Forestry, 1983, 1989, 1994, 2000, 2005, 2010). These inventories were compiled from more than 250,000 plots (160,000 permanent sample plots plus 90,000 temporary sample plots) across

the country. Systematic sampling with a grid of 2 km by 2 km or 4 km by 4 km and an area of 10 m by 10 m was used depending on forest region. In CFID, China's forests were classified into three categories: stands (including natural and planted forests), economic forests (woods with the primary objective of production of fruits, edible oils, drinks, flavorings, industrial raw materials, and medicinal materials), and bamboo forests (Guo et al. 2013). In the present study, "forest" refers only to a "forest stand" with canopy coverage $\geq 20\%$ and therefore excludes economic and bamboo forests (Fang et al., 2007). At the provincial level, the inventories documented detailed information on age class, area, and volume for each forest type, in which forest area was estimated by the "ratio method" in the systematic sampling across each province (see Appendix F). To investigate spatial variation, we divided the national land area into six broad regions—North, Northeast, East, South Central, Southwest, and Northwest—consistent with the method of Fang et al. (2001) (Fig. 1d).

2.2. Calculation of forest biomass C stocks

In this study, we used the continuous biomass expansion factor (BEF, defined as the ratio of stand biomass to timber volume) method with parameters for each forest type taken from Guo et al. (2013) to calculate forest biomass in China, because the CFID only report the forest area and timber volume for each forest type. The BEF method was firstly developed from the allometric relationships between forest biomass and forest timber volume (Fang et al 1998; Brown and Schroeder, 1999), then evolved to be the continuous BEF method based on the reciprocal equation expressing BEF–timber volume relationship (Fang et al. 1998, 2001, 2005):

$$\text{BEF} = a + b/x \quad (1)$$

In Eq. (1), x is the timber volume per unit area ($\text{m}^3 \text{ ha}^{-1}$), and a and b are constants for each specific forest type. With this simple BEF approach, one can easily calculate regional or

national forest biomass based on direct field measurements and forest inventory data.

Calculations with the BEF method are well documented by Fang et al. (2001, 2014a) and the BEF method has been applied previously to estimate China's forest stand biomass (Fang et al., 2007; Guo et al., 2013). In this study, the ratio of 0.5 was used to convert biomass to C stock (Fang et al., 2001).

2.3. Calculation of the relative contributions of forest areal expansion and increased biomass density

Using the Forest Identity concept (Kauppi et al., 2006; Waggoner, 2008), Fang et al. (2014a) proposed the method to separate relative contribution of forest areal expansion and forest growth to changes in forest biomass stock (or biomass C sink/source). According to Fang et al. (2014a), the relationships among forest area (A), biomass C density (D), and total biomass C stock (M) can be formulated by Eq. (2), and their respective rates of change (a , d , and m) over time (t) can be derived- from Eqs. (3) and (4).

$$M = A \times D . \quad (2)$$

Because $\ln(M) = \ln(A) + \ln(D)$,

the relative change rates of M , A , and D over time (m , a , and d) are the direct result of differentiating the equation over time

$$\frac{1}{M} \frac{dM}{dt} = \frac{1}{A} \frac{dA}{dt} + \frac{1}{D} \frac{dD}{dt}, \text{ or } \frac{d \ln(M)}{dt} = \frac{d \ln(A)}{dt} + \frac{d \ln(D)}{dt} \quad (3)$$

Let the real change rate (m , a and d) among two inventory periods approximately equal to the change rate of its natural logarithm:

$$m \approx \frac{d \ln(M)}{dt}, a \approx \frac{d \ln(A)}{dt}, d \approx \frac{d \ln(D)}{dt}$$

Then, $m = a + d$

where M , A , and D represent total biomass C stock (Tg C or Pg C, 1Tg = 10^{12} g, 1Pg = 10^{15} g), forest area (ha), and biomass C density (Mg C ha⁻¹, 1Mg = 10^6 g), respectively; and m , a , and

d are the corresponding derivatives (or rate of change) of these attributes over time (t).

The rates (m , a , and d) can be approximately calculated by the following formulas (Eq. 4):

$$\text{Change rate}(\% \text{ yr}^{-1}) \approx \frac{2(X_2 - X_1)}{(X_2 + X_1)(t_2 - t_1)} 100\% \quad (4)$$

where X_1 and X_2 represent the forest area (A) or biomass C density (D) in the forest inventory period going from t_1 and t_2 , respectively.

Thus, the relative contribution of change in forest area (R_a , %) and change in biomass density (R_d , %) to the change in forest biomass C stock can be expressed as Eq. (5):

$$R_a (\%) = a/m \times 100; R_d (\%) = d/m \times 100 \quad (5)$$

3. Results

3.1. Spatial pattern of the relative contributions of forest area and biomass density to C sinks

Figure 1 shows the results of the national and regional relative contributions of forest areal expansion (a) and increased biomass C density (d) to the C sinks for all, planted, and natural forests between the late 1970s (1977–1981) and the 2000s (2004–2008). For all forests in China, the mean rates of change in forest area and biomass density were 0.85% year⁻¹ and 0.29% year⁻¹, respectively, with a larger contribution by the former than that of the latter (74.6% vs. 25.4%) to the net change of carbon stock (1709.7 Tg C) (Fig. 1a, Appendix A). As shown in Fig. 1a, forest stands in all regions have increased in area and C density, and functioned as C sinks during the period 1977–2008 (also see Appendix A), but the relative contributions differed considerably among regions. Within the Southwest, South Central and East regions, forest area increased remarkably, and thus areal expansion made a larger contribution than that of increased biomass density to the C sinks (the relative contributions of forest area in these regions were 89.6%, 65.4%, and 76.2%, respectively). In addition, forest C sinks within these three regions were much larger than those of other regions in China

(Appendix A). The relative contributions of changes in forest area and biomass density were similar in the North (53.3% vs. 56.7%) and Northwest (46.1% vs. 53.9%) regions. However, in the Northeast region forest area increased only slightly, with a mean change of 0.06% year⁻¹, and thus made a small contribution (18.3%) to the regional C sink over the past 30 years.

Planted forests have functioned as C sinks (817.6 Tg C) in the past three decades (Appendix B), and areal expansion made a larger contribution to the C sink than did change in biomass density in all regions (Fig. 1b). At the national level, the area of planted forests increased at a mean rate of 3.18% year⁻¹ and contributed 62.2% to biomass C sinks of planted forests between 1977 and 2008. Among the six regions, the largest contribution of areal expansion (78.2%) was in the Southwest, followed by the North (71.2%), South Central (60.4%) and East (57.1%) regions. The contributions of areal expansion and increased biomass density were approximately equal to 50% in the Northeast and Northwest regions.

In contrast to planted forests, areal expansion of natural forests was found to be a smaller contributor to the C sink (892.1 Tg C) than increased biomass density (39.6% vs. 60.4%) at the national level, with *a* and *d* of 0.27 and 0.41% year⁻¹, respectively (Fig. 1c). However, the patterns were not consistent at the regional level: forest areal expansion made a larger contribution to the C sink than did increased biomass density in the Southwest (63.2% vs. 36.8%) and South Central (58.0% vs. 42.0%) regions, and in the East region areal expansion was responsible for all of the C sink (104.0%), because the C density of natural forests has shrunk by 0.49% over the last 30 years (*d* = -0.02% year⁻¹) (also see Appendix C).

Conversely, in North and Northwest China, increased C density dominated the C sinks, with contributions of 98.4% and 107.0%, respectively. In the Northeast region, the area of natural forest has decreased at a mean rate of 0.27% year⁻¹, which exceeds the increase in C density (*d* = 0.24% year⁻¹), and has ultimately contributed fully to the C source of the natural forest in

193 this region.

194 *3.2 Temporal dynamics of the relative contributions of forest area and biomass density to C* 195 *sinks*

196 We further explored changes of the relative contributions of forest areal expansion and
197 biomass density to C sinks of Chinese forests from 1977 to 2008 (Fig. 2), by calculating the
198 change rates (a and d) and the relative contribution rates for the six forest inventory periods.

199 For planted forests, the rate of change in forest area was highest in the 1980s (1981–1988;
200 Fig. 2a) with a mean increase of 5.45% year⁻¹, then decreased until the late 1990s
201 (1993–1998), and thereafter increased in the 2000s. Over the same period, forest biomass C
202 density has experienced slow but relatively steady enhancement from the early 1980s to the
203 early 2000s (Fig. 2a), reaching the highest rate of increase in the period 1998–2003 ($d =$
204 2.33% yr⁻¹), and then decreased abruptly to a low rate of increase (0.60% year⁻¹) in the late
205 2000s (2003–2008). The relative contribution of areal expansion declined from 74.4%
206 between 1981 and 1988 to 39.0% between 1998 and 2003, whereas the contribution of
207 increased C density increased from 25.6% to 61.0% over the same period (Fig. 2c). After
208 2003, on account of the rapid growth in forest area (Fig. 2a), the contribution of areal
209 expansion increased and became the dominant contributor to the C sink of China's planted
210 forest (87.7% vs. 12.3% for 2003–2008).

211 In contrast to planted forest, the areal expansion and increase of C density in natural
212 forests were more dynamic, having relatively lower rates of change less than 1.5% year⁻¹ over
213 the study period (Fig. 2b). Furthermore, negative growth was observed in forest area ($a =$
214 -1.80% year⁻¹ for 1993–1998) and biomass C density ($d = -0.08$ and -0.20% year⁻¹ for
215 1981–1988 and 1998–2003, respectively) in natural forest over the study period. Aligning
216 with dynamic rates of change, the relative contribution of forest areal expansion showed a
217 generally decreasing trend from 1981 (366.7%) to 2008 (70.2%), in contrast to the increase in

C density (Fig. 2d). In addition, areal expansion always made a greater impact on the carbon sink than did the change in C density in most of the inventory periods, except for the period of 1988–1993, when increased C density made a slightly larger contribution than areal expansion (51.1% vs. 48.9%).

3.3 Causes of C loss of natural forests at the provincial level

Over past three decades, planted forests have functioned as C sinks in all provinces of China (Appendix D). However, three provinces showed a distinct C loss in their natural forests over the study period (Appendix E): Heilongjiang (located in Northeast), Gansu (Northwest), and Fujian (East). Among these provinces, Heilongjiang contained the largest area of natural forest (1817.9×10^4 ha; 1977–1981) in China, of which the biomass C stock has shrunk by 47.2 Tg C (783.7 Tg C during 1977–1981 to 736.5 Tg C in the 2000s). The C stocks of natural forest in Gansu and Fujian also underwent a decline from 87.0 and 132.8 Tg C in the 1970s to 82.4 and 128.9 Tg C in the 2000s, respectively. Here, we focused on these three provinces to explore the reasons for the declines in C stock of the natural forests over the past 30 years by quantifying the relative contributions of changes in forest area and C density.

Among the three provinces, biomass C density of natural forests increased more or less from 1977 to 2008; the rate of change was highest in Gansu ($d = 0.66\% \text{ year}^{-1}$), whereas only slight increases were observed in Heilongjiang and Fujian (Fig. 3, Appendix E). Conversely, the forest area in these provinces experienced more obvious decreases. The forest area in Heilongjiang decreased dramatically by 133.6×10^4 ha ($a = -0.28\% \text{ year}^{-1}$) over the last 30 years, followed by that of Gansu (41.1×10^4 ha, $a = -0.85\% \text{ year}^{-1}$) and Fujian (12.9×10^4 ha, $a = -0.14\% \text{ year}^{-1}$). Detailed analysis of the temporal dynamics of change rates in these provinces demonstrated that most of the decline in forest area occurred between 1981 and 1998 (Fig. 4a, c and e), whereas the contributions of forest area to the C stock change of these provinces

increased rapidly, attaining their highest values (Fig. 4b, d and f). Overall, the rapid decline in forest area has exceeded the contribution of increased C density, and ultimately caused the C loss in these provinces (Figs. 3 and 4).

4. Discussion

4.1. Relative contributions of changes in forest area and biomass density to the C sink in China's forests

Over the past three decades, areal expansion and forest growth have increased C stocks in both planted (817.6 Tg C) and natural (892.1 Tg C) forests (Appendices B and C). However, the mechanisms underlying the C sinks differed markedly with various effects from these two driving agents (Fig. 5).

For planted forests, areal expansion made a larger contribution than did biomass growth at both national and regional levels (Fig. 1b). Benefiting from the implementation of national afforestation and reforestation projects since the 1970s (Fang et al., 2001; Li, 2004; FAO, 2006; Wang et al., 2007), the area of planted forest in China has expanded dramatically from 16.95 10^6 ha to 24.05 10^6 ha over the last 30 years (Appendix B). Meanwhile, the growth of these young forests also made a significant contribution to C sequestration; the biomass density of planted forest has increased by 71.2% from an initial density of 15.6 Mg C ha⁻¹ to 26.7 Mg C ha⁻¹ in the late 2000s (2004–2008), which indicates that planted forest could still sequester additional C through future growth (Guo et al., 2010; Xu et al., 2010).

Compared to planted forests, growth of existing natural forests was a larger contributor to the C sink than areal expansion at the national level (60.4% vs. 39.6% for density change vs. area change), because the biomass density has increased more rapidly, with a net gain of 4.8 Mg C ha⁻¹ (11.6%), than did forest area (7.4%). Regional disparities were also apparent. Forest growth dominated the C sink in the North and Northwest regions, but made a smaller

contribution in the Southwest, South Central and East regions (Fig. 1c). The inconsistent patterns in the contributions of forest growth and areal expansion may be associated with differences in forest management policies, harvest intensity, and climatic factors (e.g., the warming climate, increasing summer precipitation, elevated CO₂, and natural nitrogen deposition) among these regions (Fang et al., 2004; Du et al., 2014; Also see in Fang et al. 2014b). For instance, southern and southwest China has experienced drier and hotter climate in the last 3 decades while northern China became wetter and had longer growing seasons (Peng et al., 2011), which may effectively contribute to the enhanced C densities in the northern regions

4.2. Dynamics of areal expansion and forest growth in planted and natural forests

It is generally recognized that areal expansion and forest growth are closely associated with the intensity of reforestation and loss of forest cover (e.g. deforestation, industrial harvest or natural disturbance). Therefore, implementation of forest management policies may have a strong impact on forest C sequestration via the introduction of a variety forest projects in a country (Brown et al., 1997; Fang et al., 2001; Birdsey et al., 2006; Kauppi et al., 2006). Naturally, different forest management policies and projects would alter the rate of change in forest expansion and growth at different levels, ultimately leading to mechanisms regulating C sequestration among natural and planted forests.

The decline followed by an increasing trend in the areal expansion in planted forests was strongly associated with the stages of forest restoration projects conducted in China (Fig. 2a). The nationwide reforestation projects in China can be divided into two stages. Aiming to provide resistance to harsh weathers and environmental protection, the first stage was initiated in the 1970s and peaked in the 1980s; the forests established in this period were specifically targeted for environmental protection in some regions or provinces (Li, 2004; Wang et al., 2007). The second stage, initiated from the late 2000s, included six major forestry projects:

Natural Forest Conservation Projects (2000), Three-North Protection Forest System (2000), Wild Life and Nature Reserve Construction Projects (2001), Grain for Green Project (2002), Fast-growing Forests in Key Areas Projects (2002), and the Beijing-Tianjin-Hebei Sandstorm Source Treatment Project (2002) (Lei, 2005; Liu, 2006; Wang et al., 2007). Compared with the first stage, the second stage covered more than 97% of counties in the country, and was designed for a broader range of ecosystem services and multiple goals (e.g., biodiversity conservation and development of fast-growing plantations for industry). Rapid and concentrated afforestation projects would indeed enlarge the forest area and enhance the relative contribution of areal expansion to the C sink in a short period (i.e., in the periods 1981–1988 and 2003–2008; Fig. 2c). However, once the projects were slowed down or finished, forest growth would take over, accelerating under favorable growth conditions and effective management and leading to improvement in the relative contribution of C density to the C sink over a longer time frame (Fig. 2c).

The natural forests in China constitute a large C stock, of which its proportion to total forest biomass C stock was 83.40% in the late 2000s (2004–2008). However, natural forests have faced long-term logging pressure (e.g. timber extraction and farming) (Li, 2004; Lei, 2005), in addition to other degrading factors, such as increased wildfires or extreme weather events (Shi, 2011). In the present study, owing to the drastic changes in forest area and biomass density over the last 30 years (Fig. 2b), the relative contributions were variable without clear trends (Fig. 2d). For instance, in the period 1993–1998 biomass density increased from 43.2 Mg C ha⁻¹ to 46.0 Mg C ha⁻¹ ($d = 1.25\% \text{ year}^{-1}$), but forest area decreased by $0.97 \times 10^6 \text{ ha}$ ($a = -1.79\% \text{ year}^{-1}$) in the same period (Appendix C, Fig. 2b). Thus, areal contraction was responsible for the net C loss in the late 1990s. Analysis of C sinks at the provincial level also revealed that forest area declined at a relatively higher rate than the increase in biomass density in some provinces, making areal reduction the primary

reason for C loss in natural forests (Fig. 3). Notably, since the late 1990s (1994–1998), natural forests in China have functioned as a persistent C sink, probably owing to implementation of the nationwide Natural Forest Conservation Project starting in 1998 (Appendix C) (Shen, 2000; Lei, 2005; Ministry of Forestry of China, 2009; Guo, 2013). Subsequently, the relative contribution of changes in biomass has shown a constantly increase (Fig. 2d).

4.3 Uncertainty of estimates

Uncertainties in our studies mainly arise from the quality of forest area and timber volume data in the forest inventories and the estimation of national biomass stocks using the BEF method. On the one hand, precision in the forest area and timber volume data was required to be >90% in almost all provinces (>85% in Beijing, Shanghai, and Tianjin) (Xiao, 2005). On the other hand, the R^2 values of the BEF equations used to convert timber volume to biomass for most dominant tree species or forest types exceeded 0.8 (Fang et al., 2014a). Therefore, the data and method used in the present study show relatively high precision. Previous studies have reported that the estimation error of biomass stocks at the national level are expected to be less than 3% in China (Fang et al., 1996).

Conclusions

With the implementations of national afforestation and reforestation programs since the late 1970s, China is credited with making a significant contribution to regional and global C sinks in recent decades. Using forest identity and CFID, this study quantified in detail the relative contributions of forest areal expansion and increased biomass density to China's forest C sinks during the past 30 years. Our findings suggested that the mechanisms underlying the C sinks for natural and planted forests differed markedly with various effects from these two driving agents. The areal expansion of forests was a larger contributor to C sinks than forest growth for all forests and planted forests while forest growth (e.g. increased biomass density) made a larger contribution for natural forests. Furthermore, the increasing trend in the relative

contribution of forest growth to C sinks for planted forests highlight that afforestation can
continue to increase the C sink of China's forests in the future subject to
persistently-increasing forest growth after establishment of plantation.

Author contributions

J. F., J.Z., and P.L. designed the research; P. L., J.Z., H.H., Z.G., and J.F. performed the
research; P.L., J.Z., and J.F analyzed data; J.F., Y.P. and R.B. contributed new analytic tools;
P.L. and J.Z. prepared the manuscript with contributions from all co-authors.

Acknowledgements

This work was supported by the National Natural Science Foundation of China (Nos.
31321061 and 31330012), Chinese Academy of Sciences (XDA05050300), US Forest Service
(07-JV-11242300-117), and the State Forestry Administration of China (2013-R13).

357

358 **References**

- 359 Birdsey, R., Pregitzer, K. and Lucier, A.: Forest carbon management in the United States, J.
360 Environ. Qual., 35(4), 1461–1469, 2006.
- 361 Bonan, G. B.: Forests and climate change: forcings, feedbacks, and the climate benefits of
362 forests, Science, 320(5882), 1444–1449, 2008.
- 363 Brown, S. L. and Schroeder, P. E.: Spatial patterns of aboveground production and mortality
364 of woody biomass for eastern U.S. forests, Ecol. Appl., 9(3), 968–980, 1999.
- 365 Brown, S. L., Schroeder, P. and Kern, J. S.: Spatial distribution of biomass in forests of the
366 eastern USA, For. Ecol. Manag., 123(1), 81–90, 1999.
- 367 Brown, S., Sathaye, J., Cannell, M. and Kauppi, P.: Mitigation of carbon emissions to the
368 atmosphere by forest management, Commonw. For. Rev., 75(1), 80–91, 1996.
- 369 Brown, S., Schroeder, P. and Birdsey, R.: Aboveground biomass distribution of US eastern
370 hardwood forests and the use of large trees as an indicator of forest development, For. Ecol.
371 Manag., 96(1), 37–47, 1997.
- 372 Du, Z., Wang, W., Zeng, W. and Zeng, H.: Nitrogen Deposition Enhances Carbon
373 Sequestration by Plantations in Northern China, PLoS ONE, 9(2), e87975,
374 doi:10.1371/journal.pone.0087975, 2014.
- 375 FAO: Global Forest Resources Assessment 2005: Progress Towards Sustainable Forest
376 Management. FAO Forestry Paper No. 147. Rome, Italy, 2006.
- 377 Fang, J. and Chen, A.: Dynamic forest biomass carbon pools in China and their significance,
378 Acta Bot. Sin., 43(9), 967–973, 2000.
- 379 Fang, J., Chen, A., Peng, C., Zhao, S. and Ci, L.: Changes in forest biomass carbon storage in
380 China between 1949 and 1998, Science, 292(5525), 2320–2322, 2001.
- 381 Fang, J., Guo, Z., Hu, H., Kato, T., Muraoka, H. and Son, Y.: Forest biomass carbon sinks in
382 East Asia, with special reference to the relative contributions of forest expansion and forest
383 growth, Glob. Change Biol., 20(6), 2019–2030, 2014a.
- 384 Fang, J., Guo, Z., Piao, S. and Chen, A.: Terrestrial vegetation carbon sinks in China,
385 1981–2000, Sci. China Ser. Earth Sci., 50(9), 1341–1350, 2007.
- 386 Fang, J., Kato, T., Guo, Z., Yang, Y., Hu, H., Shen, H., Zhao, X., Kishimoto-Mo, A. W., Tang,
387 Y. and Houghton, R. A.: Evidence for environmentally enhanced forest growth, Proc. Natl.
388 Acad. Sci., 111(26), 9527–9532, 2014b.
- 389 Fang, J., Liu, G. and Xu, S.: Biomass and net production of forest vegetation in China [J],
390 Acta Ecol. Sin., 16, 497–508, 1996.
- 391 Fang, J., Oikawa, T., Kato, T., Mo, W. and Wang, Z.: Biomass carbon accumulation by
392 Japan's forests from 1947 to 1995, Glob. Biogeochem. Cycles, 19(2), GB2004,

doi:10.1029/2004GB002253, 2005.

Fang, J., Piao, S., He, J. and Ma, W.: Increasing terrestrial vegetation activity in China, 1982–1999, *Sci. China C Life Sci.*, 47(3), 229–240, 2004.

Fang, J., Tang, Y. and Son, Y.: Why are East Asian ecosystems important for carbon cycle research?, *Sci. China Life Sci.*, 53(7), 753–756, 2010.

Fang, J., Wang, G. G., Liu, G. and Xu, S.: Forest biomass of china: an estimate based on the biomass–volume relationship, *Ecol. Appl.*, 8(4), 1084–1091, 1998.

Guo, Z., Fang, J., Pan, Y. and Birdsey, R.: Inventory-based estimates of forest biomass carbon stocks in China: A comparison of three methods, *For. Ecol. Manag.*, 259(7), 1225–1231, 2010.

Guo, Z., Hu, H., Li, P., Li, N. and Fang, J.: Spatio-temporal changes in biomass carbon sinks in China’s forests from 1977 to 2008, *Sci. China Life Sci.*, 56(7), 661–671, 2013.

Hu, H. and Wang, G. G.: Changes in forest biomass carbon storage in the South Carolina Piedmont between 1936 and 2005, *For. Ecol. Manag.*, 255(5–6), 1400–1408, 2008.

Janssens, I. A., Freibauer, A., Ciais, P., Smith, P., Nabuurs, G.-J., Folberth, G., Schlamadinger, B., Hutjes, R. W. A., Ceulemans, R., Schulze, E.-D., Valentini, R. and Dolman, A. J.: Europe’s Terrestrial Biosphere Absorbs 7 to 12% of European Anthropogenic CO₂ Emissions, *Science*, 300(5625), 1538–1542, , 2003.

Kauppi, P. E., Ausubel, J. H., Fang, J., Mather, A. S., Sedjo, R. A. and Waggoner, P. E.: Returning forests analyzed with the forest identity, *Proc. Natl. Acad. Sci.*, 103(46), 17574–17579, 2006.

Lei, J.: Forest resource of China. China Forestry Publishing House, Beijing, 2005.

Leith, H. and Whittaker, R.: Primary production of the biosphere, *Ecol Stud.* 14Springer N. Y., 1975.

Li, W.: Degradation and restoration of forest ecosystems in China, *For. Ecol. Manag.*, 201(1), 33–41, 2004.

Liu, Y.: Study on Post-evaluation Theory and Application of the Forestry Ecological Engineering in China. Beijing Forestry University, Beijing, 2006

Magnani, F., Mencuccini, M., Borghetti, M., Berbigier, P., Berninger, F., Delzon, S., Grelle, A., Hari, P., Jarvis, P. G., Kolari, P., Kowalski, A. S., Lankreijer, H., Law, B. E., Lindroth, A., Loustau, D., Manca, G., Moncrieff, J. B., Rayment, M., Tedeschi, V., Valentini, R. and Grace, J.: The human footprint in the carbon cycle of temperate and boreal forests, *Nature*, 447(7146), 849–851, 2007.

Malhi, Y., Meir, P. and Brown, S.: Forests, carbon and global climate, *Philos. Trans. R. Soc. Lond. Ser. Math. Phys. Eng. Sci.*, 360(1797), 1567–1591, 2002.

McKinley, D. C., Ryan, M. G., Birdsey, R. A., Giardina, C. P., Harmon, M. E., Heath, L. S., Houghton, R. A., Jackson, R. B., Morrison, J. F., Murray, B. C., Pataki, D. E. and Skog, K. E.:

430 A synthesis of current knowledge on forests and carbon storage in the United States, *Ecol.*
431 *Appl.*, 21(6), 1902–1924, doi:10.1890/10-0697.1, 2011. Ministry of Forestry of China: Forest
432 Resource Report of China–7th National Forest Resources inventor. China Forestry Publishing
433 House, Beijing, 2009.

434 Nabuurs, G.-J., Schelhaas, M.-J., Mohren, G. (frits) M. J. and Field, C. B.: Temporal evolution
435 of the European forest sector carbon sink from 1950 to 1999, *Glob. Change Biol.*, 9(2),
436 152–160, doi:10.1046/j.1365-2486.2003.00570.x, 2003.

437 Pan, Y., Birdsey, R. A., Fang, J., Houghton, R., Kauppi, P. E., Kurz, W. A., Phillips, O. L.,
438 Shvidenko, A., Lewis, S. L., Canadell, J. G., Ciais, P., Jackson, R. B., Pacala, S. W., McGuire,
439 A. D., Piao, S., Rautiainen, A., Sitch, S. and Hayes, D.: A Large and Persistent Carbon Sink in
440 the World’s Forests, *Science*, 333(6045), 988–993, 2011.

441 Pan, Y., Birdsey, R. A., Phillips, O. L. and Jackson, R. B.: The Structure, Distribution, and
442 Biomass of the World’s Forests, *Annu. Rev. Ecol. Evol. Syst.*, 44(1), 593–622, 2013.

443 Peng, S., Chen, A., Xu, L., Cao, C., Fang, J., Myneni, R. B., Pinzon, J. E., Tucker, C. J. and
444 Piao, S.: Recent change of vegetation growth trend in China, *Environ. Res. Lett.*, 6(4), 044027,
445 doi:10.1088/1748-9326/6/4/044027, 2011.

446 Shi, L., Zhao, S., Tang, Z. and Fang, J.: The Changes in China’s Forests: An Analysis Using
447 the Forest Identity, *PLoS ONE*, 6(6), e20778, doi:10.1371/journal.pone.0020778, 2011.

448 Waggoner, P. E.: Using the Forest Identity to Grasp and Comprehend the Swelling Mass of
449 Forest Statistics, *Int. For. Rev.*, 10(4), 689–694, 2008.

450 Wang, G., Innes, J. L., Lei, J., Dai, S. and Wu, S. W.: China’s Forestry Reforms, *Science*,
451 318(5856), 1556–1557, 2007.

452 Watson, R. T., Noble, I. R., Bolin, B., Ravindranath, N. H., Verardo, D. J. and Dokken, D. J.:
453 Land use, land-use change and forestry: a special report of the Intergovernmental Panel on
454 Climate Change., Cambridge University Press, Cambridge, 2000.

455 Xiao, X.: Forest inventory of China. China Forestry Publishing House, Beijing, 2005.

456 Xu, B., Guo, Z., Piao, S. and Fang, J.: Biomass carbon stocks in China’s forests between 2000
457 and 2050: A prediction based on forest biomass-age relationships, *Sci. China Life Sci.*, 53(7),
458 776–783, 2010.

459

Fig. 1. Rate of change and relative contributions of forest area and biomass density to carbon sinks in all (a), planted (b) and natural (c) forests in six broad regions of China for the period 1977–2008. The division of these six broad regions are indicated as (d). Bars and numbers above represent the change rates and their relative contributions of forest area (in black color) and carbon density (in red color), respectively.

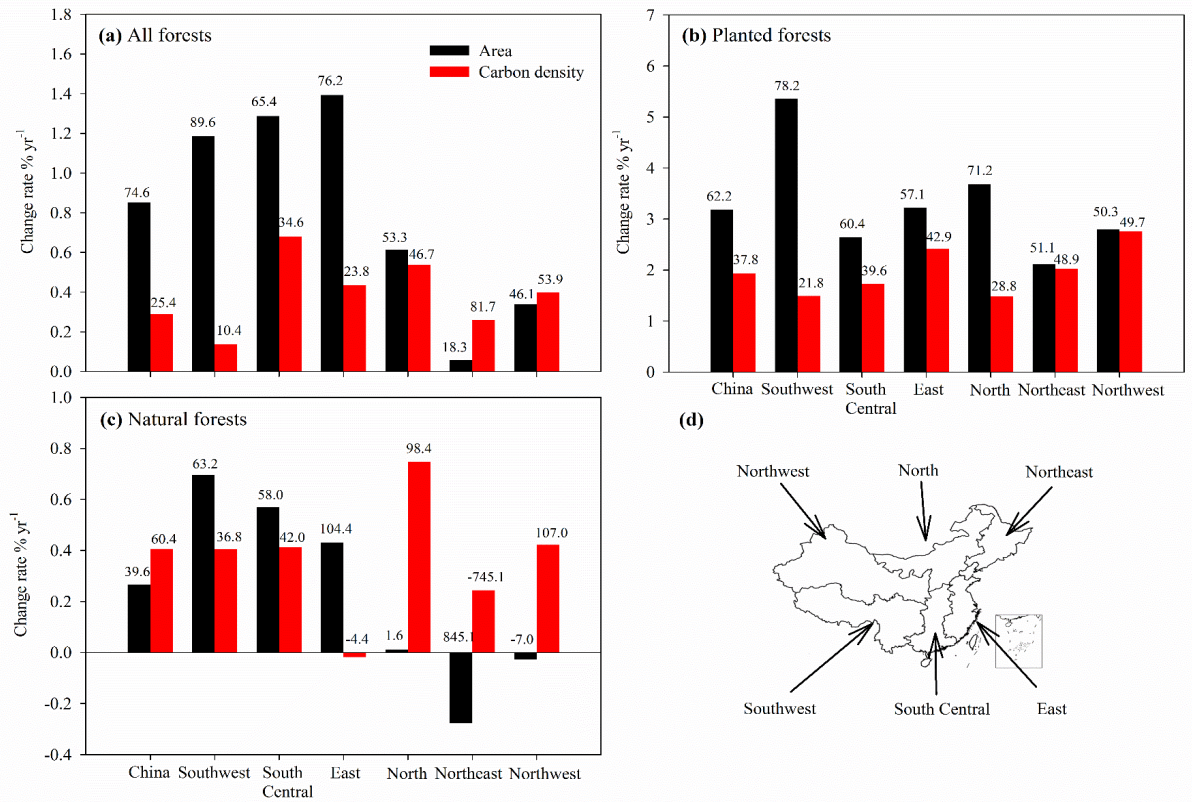


Fig. 2. Relative contributions and the dynamics of areal expansion and forest growth to carbon sinks in planted (a and c) and natural (b and d) forests of China in the period 1977–2008. Bars and points represent the rates of change and relative contributions of forest area (in black color) and carbon density (in red color), respectively.

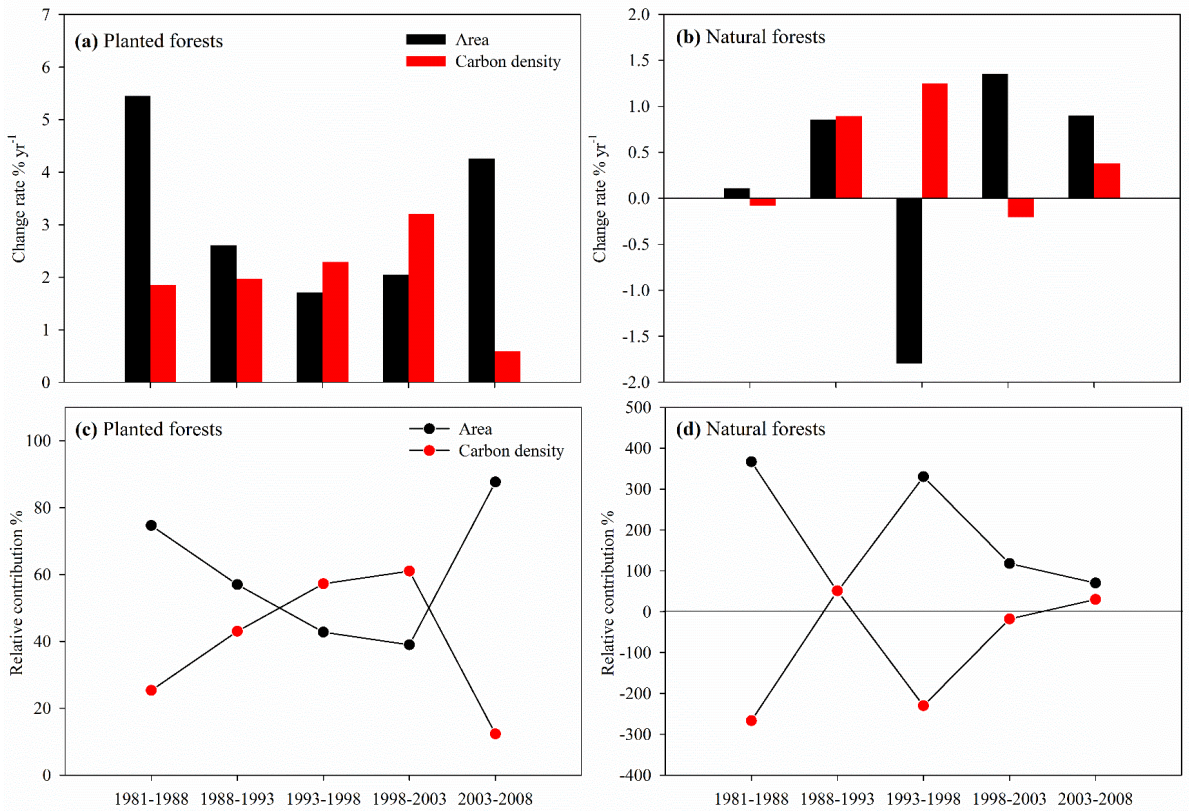


Fig. 3. Rate of change and the relative contributions of changes in forest area and carbon density of natural forests to carbon loss in three provinces of China in the period 1977–2008. Bars and numbers above represent the change rates and their relative contributions of forest area (in black color) and carbon density (in red color), respectively

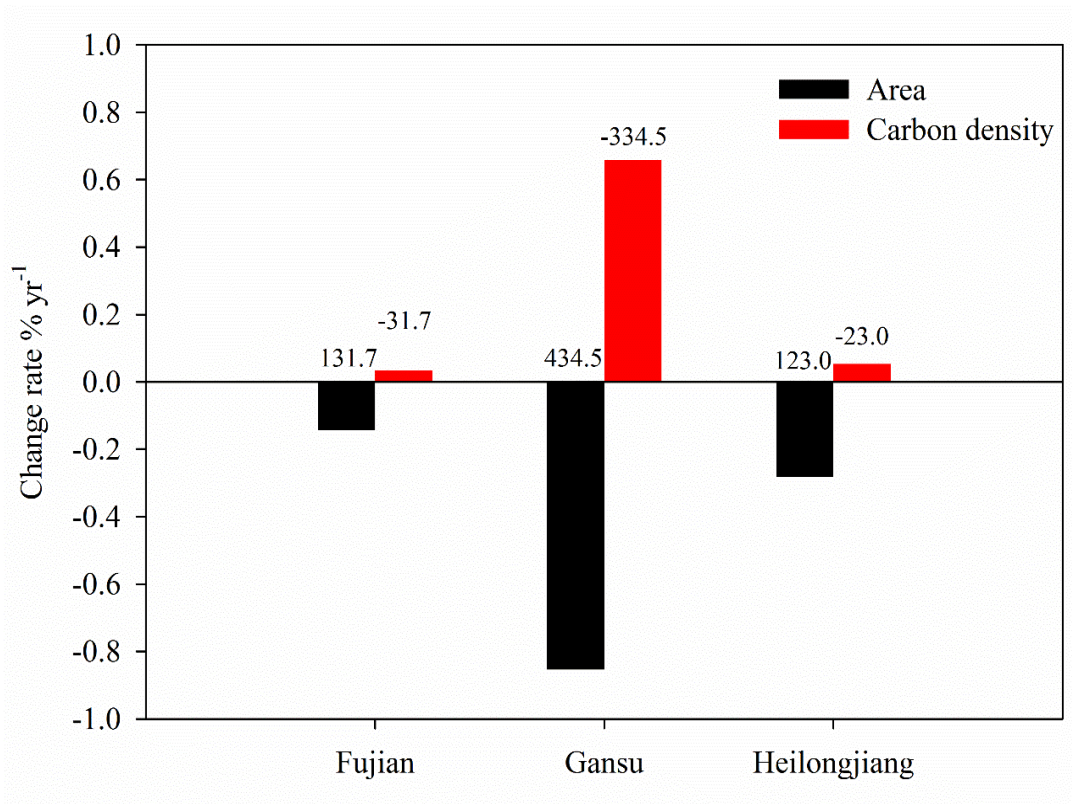


Fig. 4. Rate of change (a, c and e) and relative contributions of changes (b, d and f) in forest area and carbon density of natural forests to carbon loss in three provinces of China in the period 1977–2008. Bars and points represent the rates of change and relative contributions of forest area (in black color) and carbon density (in red color), respectively.

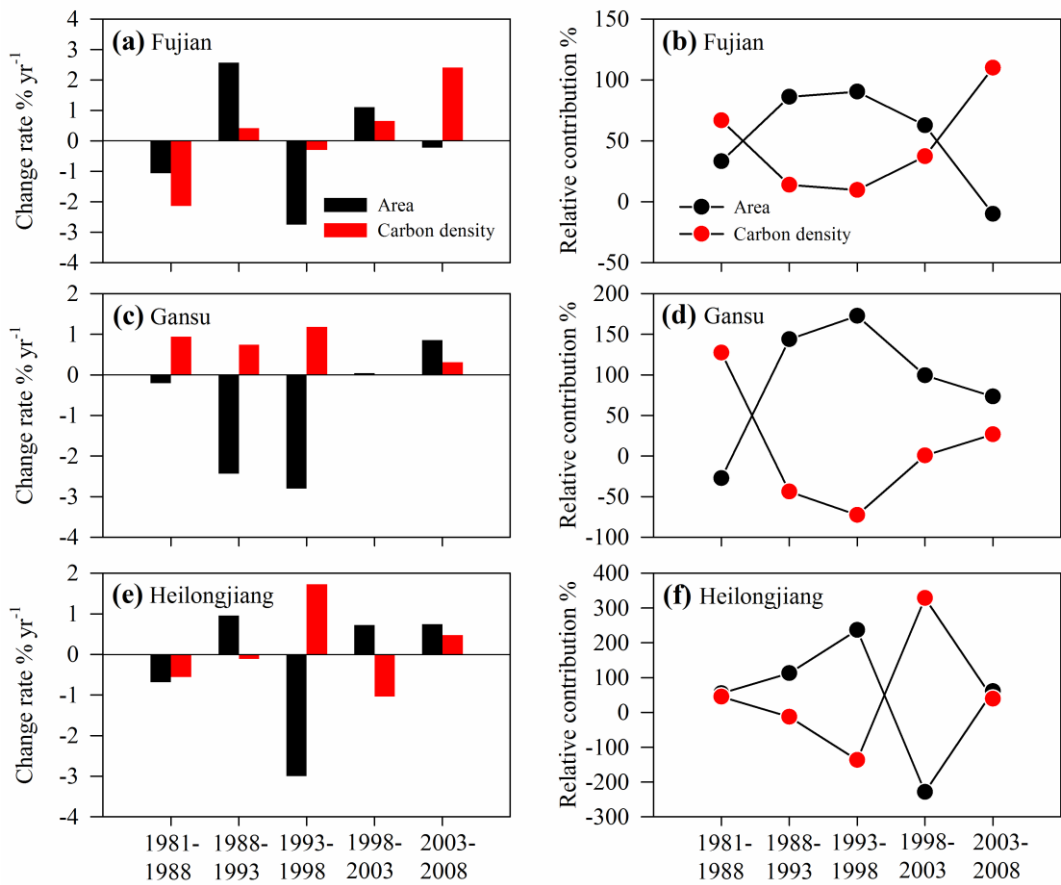
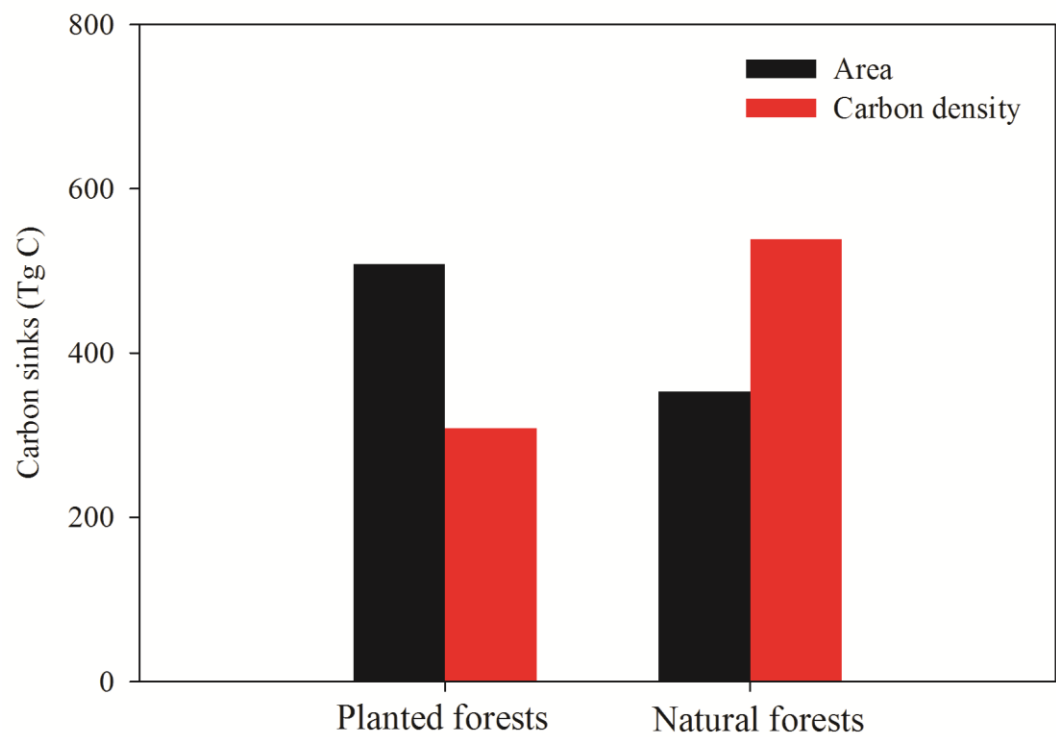
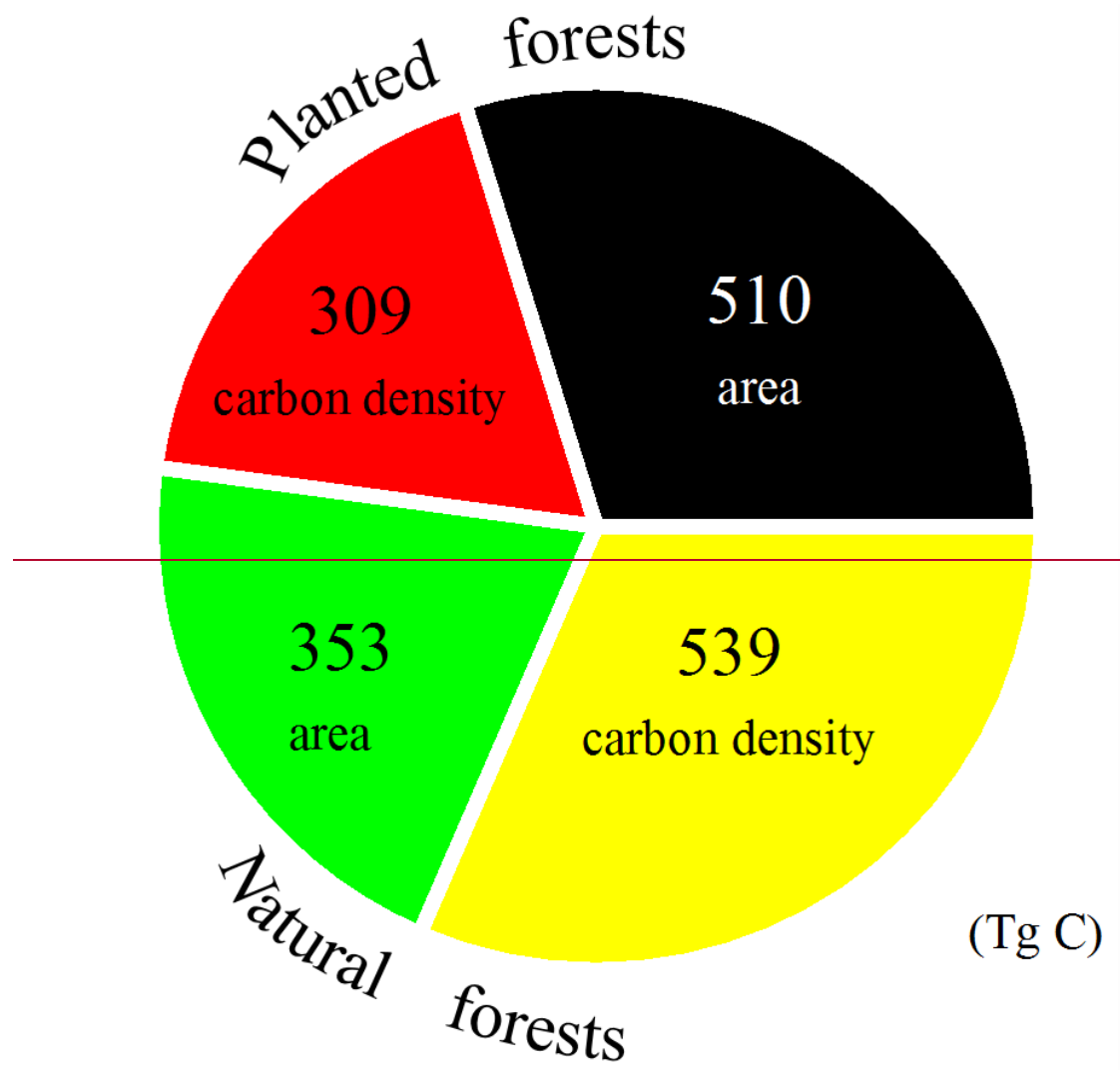


Fig. 5. Summary of the forest biomass carbon accumulation induced by areal expansion and increase in carbon density for planted and natural forests of China in the period 1977–2008.





Appendix A. Forest area, carbon stock, and carbon sinks for six regions in China from 1977 to 2008

Period	China	North	Northeast	East	South Central	Southwest	Northwest
Area (10 ⁴ ha)							
1977–1981	12350.3	1849.1	2953.9	1525.9	2173.3	2939.3	908.8
1984–1988	13169.1	1899.8	3054.2	1723.2	2142.3	3333.0	1016.6
1989–1993	13971.5	1997.1	3130.5	1904.2	2446.0	3532.6	961.2
1994–1998	13240.6	1761.0	2769.8	1903.9	2498.8	3409.7	897.4
1999–2003	14278.7	2003.3	2826.3	2026.7	2720.0	3802.2	900.3
2004–2008	15559.0	2182.9	3000.7	2232.6	3087.3	4059.2	996.3
Net change	3208.7	333.9	46.8	706.7	914.0	1119.9	87.5
C stock (Tg C)							
1977–1981	4717.4	556.7	1249.9	384.5	456.4	1719.7	350.2
1984–1988	4884.8	593.6	1256.4	377.0	428.0	1857.3	372.6
1989–1993	5402.3	629.3	1308.7	428.8	505.4	2151.5	378.5
1994–1998	5387.9	621.3	1257.1	435.2	545.5	2145.4	383.5
1999–2003	5862.5	701.1	1272.8	515.7	653.0	2326.6	393.4
2004–2008	6427.1	760.1	1362.2	632.8	779.3	2465.3	427.4
Net change	1709.7	203.4	112.3	248.4	322.9	745.6	77.2
C density (Mg C ha ⁻¹)							
1977–1981	38.2	30.1	42.3	25.2	21.0	58.5	38.5
1984–1988	37.1	31.2	41.1	21.9	20.0	55.7	36.6
1989–1993	38.7	31.5	41.8	22.5	20.7	60.9	39.4
1994–1998	40.7	35.3	45.4	22.9	21.8	62.9	42.7
1999–2003	41.1	35.0	45.0	25.4	24.0	61.2	43.7
2004–2008	41.3	34.8	45.4	28.3	25.2	60.7	42.9
Net change	3.1	4.7	3.1	3.1	4.2	2.2	4.4
C sink (Tg C year ⁻¹)							
1981–1988	23.9	5.3	0.9	−1.1	−4.1	19.6	3.2
1988–1993	103.5	7.2	10.5	10.4	15.5	58.8	1.2
1993–1998	−2.9	−1.6	−10.3	1.3	8.0	−1.2	1.0
1998–2003	94.9	16.0	3.1	16.1	21.5	36.2	2.0
2003–2008	112.9	11.8	17.9	23.4	25.3	27.8	6.8

Appendix B. Forest area, carbon stock, and carbon sinks of planted forests for six regions in China from 1977 to 2008

Period	China	North	Northeast	East	South Central	Southwest	Northwest
Area (10 ⁴ ha)							
1977–1981	1595.2	166.2	298.2	365.4	586.1	101.9	77.3
1984–1988	2347.2	244.7	497.8	583.0	595.9	277.1	148.7
1989–1993	2675.2	308.7	456.8	680.8	761.9	339.1	127.9
1994–1998	2914.4	309.5	474.4	717.5	878.5	396.7	137.9
1999–2003	3229.4	386.2	461.9	769.2	976.3	495.9	139.8
2004–2008	3999.9	494.4	536.6	928.8	1235.8	633.3	170.9
Net change	2404.6	328.2	238.3	563.4	649.6	531.4	93.6
C stock (Tg C)							
1977–1981	249.5	23.5	57.1	52.2	88.2	18.5	10.1
1984–1988	418.0	41.4	105.7	105.0	96.5	47.1	22.3
1989–1993	525.8	55.6	105.5	136.0	138.1	62.1	28.4
1994–1998	642.4	63.0	130.7	153.2	171.0	87.3	37.2
1999–2003	836.1	82.5	150.3	203.7	231.0	130.8	37.7
2004–2008	1067.1	104.8	179.9	261.4	299.0	173.0	49.1
Net change	817.6	81.4	122.8	209.2	210.8	154.5	39.0
C density (Mg C ha ⁻¹)							
1977–1981	15.6	14.1	19.1	14.3	15.0	18.1	13.1
1984–1988	17.8	16.9	21.2	18.0	16.2	17.0	15.0
1989–1993	19.7	18.0	23.1	20.0	18.1	18.3	22.2
1994–1998	22.0	20.4	27.5	21.4	19.5	22.0	27.0
1999–2003	25.9	21.4	32.5	26.5	23.7	26.4	27.0
2004–2008	26.7	21.2	33.5	28.1	24.2	27.3	28.7
Net change	11.0	7.1	14.4	13.9	9.2	9.2	15.6
C sink (Tg C year ⁻¹)							
1981–1988	24.1	2.6	6.9	7.5	1.2	4.1	1.7
1988–1993	21.6	2.8	0.0	6.2	8.3	3.0	1.2
1993–1998	23.3	1.5	5.0	3.4	6.6	5.0	1.7
1998–2003	38.7	3.9	3.9	10.1	12.0	8.7	0.1
2003–2008	46.2	4.5	5.9	11.5	13.6	8.4	2.3

499 **Appendix C.** Forest area, carbon stock, and carbon sinks of natural forests for six
500 regions in China from 1977 to 2008

Period	China	North	Northeast	East	South Central	Southwest	Northwest
Area (10 ⁴ ha)							
1977–1981	10755.0	1682.8	2655.6	1160.5	1587.2	2837.3	831.5
1984–1988	10822.0	1655.1	2556.5	1140.3	1546.4	3055.9	867.9
1989–1993	11296.2	1688.3	2673.6	1223.3	1684.1	3193.5	833.3
1994–1998	10326.1	1451.6	2295.5	1186.4	1620.3	3012.9	759.5
1999–2003	11049.3	1617.0	2364.4	1257.5	1743.7	3306.2	760.4
2004–2008	11559.1	1688.5	2464.1	1303.8	1851.5	3425.9	825.4
Net change	804.1	5.7	−191.5	143.2	264.3	588.5	−6.1
C stock (Tg C)							
1977–1981	4467.8	533.2	1192.8	332.3	368.2	1701.2	340.0
1984–1988	4466.8	552.2	1150.8	272.0	331.5	1810.2	350.3
1989–1993	4876.5	573.7	1203.2	292.8	367.3	2089.4	350.0
1994–1998	4745.5	558.3	1126.4	282.0	374.5	2058.0	346.3
1999–2003	5026.4	618.6	1122.5	311.9	422.0	2195.7	355.7
2004–2008	5360.0	655.3	1182.3	371.5	480.3	2292.3	378.3
Net change	892.1	122.0	−10.5	39.2	112.1	591.1	38.3
C density (Mg C ha ^{−1})							
1977–1981	41.5	31.7	44.9	28.6	23.2	60.0	40.9
1984–1988	41.3	33.4	45.0	23.9	21.4	59.2	40.4
1989–1993	43.2	34.0	45.0	23.9	21.8	65.4	42.0
1994–1998	46.0	38.5	49.1	23.8	23.1	68.3	45.6
1999–2003	45.5	38.3	47.5	24.8	24.2	66.4	46.8
2004–2008	46.4	38.8	48.0	28.5	25.9	66.9	45.8
Net change	4.8	7.1	3.1	−0.1	2.7	7.0	4.9
C sink (Tg C year ^{−1})							
1981–1988	−0.1	2.7	−6.0	−8.6	−5.3	15.6	1.5
1988–1993	81.9	4.3	10.5	4.2	7.2	55.8	0.0
1993–1998	−26.2	−3.1	−15.4	−2.2	1.4	−6.3	−0.7
1998–2003	56.2	12.1	−0.8	6.0	9.5	27.5	1.9
2003–2008	66.7	7.3	12.0	11.9	11.7	19.3	4.5

504 **Appendix D.** Changes in forest area, carbon density, and carbon stock for planted forests in provinces of China for the period 1977–2008

Province	Area (10 ⁴ ha)			Carbon density (Mg C ha ⁻¹)			Carbon stock (Tg C)		
	1977–1981	2003–2008	Net Change	1977–1981	2003–2008	Net Change	1977–1981	2003–2008	Net Change
Beijing	2.6	19.3	16.8	11.5	18.1	6.6	0.3	3.5	3.2
Tianjin	0.6	5.0	4.4	11.4	21.4	10.0	0.1	1.1	1.0
Hebei	43.1	122.2	79.0	12.5	20.7	8.2	5.4	25.3	19.9
Shanxi	12.5	57.2	44.7	13.2	21.9	8.7	1.6	12.5	10.9
Neimenggu	107.5	290.7	183.2	14.9	21.5	6.5	16.1	62.4	46.4
Liaoning	129.9	166.8	36.8	15.4	26.8	11.4	20.0	44.7	24.7
Jilin	88.1	141.5	53.3	21.6	39.7	18.1	19.0	56.1	37.2
Heilongjiang	80.2	228.4	148.2	22.6	34.6	12.0	18.1	79.0	60.9
Shanghai	0.0	3.4	3.4	0.0	16.9	16.9	0.0	0.6	0.6
Jiangsu	18.6	71.1	52.4	12.5	25.0	12.5	2.3	17.7	15.4
Zhejiang	63.5	118.5	55.1	12.6	24.6	12.0	8.0	29.2	21.2
Anhui	53.8	136.8	83.0	13.4	25.5	12.2	7.2	34.9	27.8
Fujian	108.6	239.8	131.2	18.8	37.3	18.4	20.5	89.4	68.9
Jiangxi	61.7	213.1	151.4	13.6	26.1	12.5	8.4	55.6	47.2
Shandong	59.2	146.0	86.8	9.9	23.3	13.4	5.9	34.0	28.1
Henan	37.7	164.6	126.9	12.7	25.4	12.8	4.8	41.9	37.1
Hubei	79.5	110.4	30.9	11.4	21.8	10.4	9.1	24.1	15.0
Hunan	115.5	290.8	175.3	13.1	25.4	12.2	15.2	73.8	58.6
Guangdong	183.8	343.5	159.7	14.9	20.0	5.1	27.3	68.5	41.2
Guangxi	148.7	293.1	144.4	19.6	28.1	8.5	29.1	82.4	53.3
Hainan	19.4	33.4	14.0	18.0	25.1	7.0	2.4	8.4	5.9
Sichuan	37.2	332.6	295.4	16.0	26.2	10.2	5.9	87.0	81.1
Guizhou	34.1	143.5	109.4	21.0	28.7	7.7	7.1	41.1	34.0
Yunnan	30.5	154.5	124.0	17.7	28.6	10.8	5.4	44.2	38.7
Xizang	0.2	2.8	2.6	0.0	24.4	24.4	0.0	0.7	0.7
Shaanxi	33.2	77.1	43.8	12.8	21.1	8.3	4.3	16.3	12.0
Gansu	19.2	55.7	36.4	12.8	24.4	11.7	2.5	13.6	11.2
Qinghai	2.3	4.1	1.8	23.6	36.5	12.9	0.5	1.5	1.0

Ningxia	6.8	5.9	-0.9	12.2	21.3	9.1	0.8	1.3	0.4
Xinjiang	15.7	28.2	12.5	13.1	58.4	45.3		2.1	2.1

505 **Bold italic font refers to the values in Hainan and Guangdong acquired from the forest inventory data in the period of 1984–1988, because these**
506 **two provinces were not separated administratively until 1988 and their separate inventory data was lacked for the period of 1977–1981.**
507

508 **Appendix E.** Changes in forest area, carbon density, and carbon stock for natural forests in provinces of China for the period 1977–2008

Province	Area (10 ⁴ ha)			Carbon density (Mg C ha ⁻¹)			Carbon stock (Tg C)		
	1977–1981	2003–2008	Net Change	1977–1981	2003–2008	Net Change	1977–1981	2003–2008	Net Change
Beijing	5.8	16.2	10.4	15.5	17.9	2.4	0.9	2.9	2.0
Tianjin	0.5	0.4	−0.1	14.4	18.2	3.9	0.1	0.1	0.0
Hebei	103.0	166.1	63.0	16.1	17.5	1.3	16.6	29.0	12.4
Shanxi	77.1	115.2	38.1	27.2	28.5	1.3	21.0	32.8	11.9
Neimenggu	1496.3	1390.5	−105.8	33.1	42.5	9.4	494.7	590.4	95.8
Liaoning	172.6	194.6	22.0	29.3	35.2	5.9	50.6	68.6	18.0
Jilin	665.2	585.3	−79.9	53.9	64.5	10.5	358.6	377.2	18.7
Heilongjiang	1817.9	1684.3	−133.6	43.1	43.7	0.6	783.7	736.5	−47.2
Shanghai	0.2	0.0	−0.2	8.8	0.0	−8.8	0.0	0.0	0.0
Jiangsu	2.9	3.4	0.4	12.5	18.4	5.9	0.4	0.6	0.3
Zhejiang	227.7	275.1	47.4	19.2	21.5	2.3	43.8	59.2	15.4
Anhui	135.7	134.0	−1.7	20.4	25.2	4.8	27.6	33.8	6.1
Fujian	339.1	326.2	−12.9	39.2	39.5	0.4	132.8	128.9	−3.8
Jiangxi	442.0	555.0	113.0	28.7	26.6	−2.1	126.7	147.5	20.9
Shandong	12.9	10.1	−2.8	8.0	13.8	5.8	1.0	1.4	0.4
Henan	101.1	118.7	17.6	19.7	25.6	5.9	19.9	30.4	10.5
Hubei	317.9	397.4	79.5	18.4	23.1	4.7	58.6	91.8	33.2
Hunan	379.7	435.8	56.1	21.5	21.8	0.3	81.8	95.0	13.2
Guangdong	320.0	335.3	15.3	19.7	27.1	7.4	62.9	90.8	27.9
Guangxi	394.9	513.6	118.7	26.3	27.9	1.6	103.8	143.5	39.6
Hainan	49.5	50.7	1.3	49.4	56.7	7.3	24.4	28.8	4.3
Sichuan	765.8	1014.7	248.9	60.5	62.3	1.8	463.7	632.3	168.6
Guizhou	225.6	254.6	29.0	28.6	28.4	−0.1	64.5	72.4	7.9
Yunnan	1056.7	1318.2	261.5	52.2	53.4	1.2	551.2	703.6	152.4
Xizang	789.2	838.4	49.1	78.8	105.4	26.6	621.9	884.0	262.1
Shaanxi	487.6	490.0	2.3	32.4	36.0	3.6	158.0	176.5	18.6
Gansu	198.9	157.8	−41.1	43.7	52.3	8.5	87.0	82.4	−4.5
Qinghai	21.9	31.4	9.6	41.9	52.1	10.2	9.2	16.4	7.2

Ningxia	4.1	5.2	1.1	22.6	31.3	8.7	0.9	1.6	0.7
Xinjiang	119.1	141.1	22.0	71.4	71.8	0.5	85.0	101.3	16.3

509 ***Bold italic font refers to the values in Hainan and Guangdong acquired from the forest inventory data in the period of 1984–1988, because these***
510 ***two provinces were not separated administratively until 1988 and their separate inventory data was lacked for the period of 1977–1981.***

Appendix F. The estimation methods for forest area and stand volume in CFID.

a) Forest area estimation

In forest inventory of China, the systematic sampling was conducted at the provincial level.

Based on the sampling method, the ratio of forest area (P_i) for a certain forest type (i) can be expressed as:

$$p_i = \frac{m_i}{n} \quad (1)$$

$$S_{p_i} = \sqrt{\frac{p_i(1-p_i)}{n-1}} \quad (2)$$

where n represents the number of all the sampling plots, m_i represents the number of plots classified as type i (including various types of land categories, vegetation types, forest types and other land classification attributions), S_{p_i} represents the standard deviation of P_i .

then, the area of forest i (\hat{A}_i) can be estimated by the following equation

$$\hat{A}_i = A \cdot p_i \quad (3)$$

where A means the overall area in the forest inventory for one province, and the total area equals to the sum area of all kinds of forests.

The limit of error for the area estimation is calculated by the following equation

$$\Delta_{A_i} = A \cdot t_\alpha \cdot S_{p_i} \quad (4)$$

where t_α is the reliability index, the estimation interval can be expressed as $\hat{A}_i \pm \Delta_{A_i}$.

The sampling precision (P_{A_i}) can be expressed as:

$$P_{A_i} = (1 - \frac{t_\alpha \cdot S_{p_i}}{p_i}) \cdot 100\% \quad (5)$$

b) Forest volume estimation

The mean stand volume for forest i can be expressed as:

$$\bar{V}_i = \frac{1}{n} \sum_{j=1}^n V_{ij} \quad (6)$$

Where V_{ij} represents the stand volume of plot j for forest i .

The sampling variance is calculated as

$$S_{V_i}^2 = \frac{1}{n-1} \sum_{j=1}^n (V_{ij} - \bar{V}_i)^2 \quad (7)$$

$$S_{\bar{V}_i} = \frac{S_{V_i}}{\sqrt{n}} \quad (8)$$

The overall stand volumes for forest i can be estimated as:

$$\hat{V}_i = \frac{A}{a} \cdot \bar{V}_i \quad (9)$$

where A means the overall area in the forest inventory for one province, a means the area of the sampling plot.

The limit of error for the overall estimation of forest i can be calculated by the following

$$\text{equation: } \Delta_{V_i} = \frac{A}{a} \cdot t_a \cdot S_{\bar{V}_i} \quad (10)$$

where t_a is the reliability index, the estimation interval can be expressed as $\hat{V}_i \pm \Delta_{V_i}$.

The sampling precision (P_{vi}) can be expressed as:

$$P_{V_i} = (1 - \frac{t_a \cdot S_{V_i}}{\bar{V}_i}) \cdot 100\% \quad (11)$$