

Potential future fisheries yields in shelf waters: a model study of the effects of climate change and ocean acidification

van Leeuwen Sonja M.¹, Le Quesne Will F.¹, and Parker Ruth E.¹

¹Centre for Environment, Fisheries and Aquaculture Science (Cefas), Pakefield Road, Lowestoft, NR33 0HT, UK

Correspondence to: S.M. van Leeuwen (sonja.vanleeuwen@cefas.co.uk)

Abstract. We applied a coupled, marine water column model to three sites in the North Sea. The three sites represent different hydrodynamic regimes and are thus representative of a wider area. The model consists of a hydro-biogeochemical model (GOTM-ERSEM-BFM) coupled one way upwards to a size-structured model representing pelagic predators and detritivores (Blanchard et al., 2009).

5 Thus, bottom-up pressures like changing abiotic environment (climate change, chemical cycling) impact on fish biomass across the size spectrum. Here, we studied three different impacts of future conditions on fish yield: climatic impacts (medium emission scenario), abiotic ocean acidification impacts (reduced pelagic nitrification) and biotic ocean acidification impacts (reduced detritivore growth rate). The three impacts were studied separately and combined, and showed that sites within
10 different hydrodynamic regimes responded very differently. The seasonally stratified site showed an increase in fish yields (occurring in winter and spring), with acidification effects of the same order of magnitude as climatic effects. The permanently mixed site also showed an increase in fish yield (increase in summer, decrease in winter), due to climatic effects moderated by acidification impacts. The third site, which is characterised by large inter-annual variability in thermal stratification dura-
15 tion, showed a decline in fish yields (occurring in winter) due to decline of the benthic system which forms an important carbon pathway at this site. All sites displayed a shift towards a more pelagic oriented system.

1 Introduction

Responsible management of marine resources has to take into account the different pressures oper-
20 ating on the marine system, like fishing pressures, changing climatic conditions and eutrophication issues. Ocean acidification, the increased uptake of CO₂ by the marine environment due to elevated

levels of atmospheric CO₂ (Doney et al., 2009; Gattuso et al., 2011), has been a recent addition to this list, but has the potential for wide-spread impact on the marine food web (see e.g. Fabry et al. (2008); Kroeker et al. (2010)). Research into ocean acidification effects have focussed largely on individual species and changes to their local environment, without considering the wider ecosystem and possible societal impact (Doney et al., 2009; Le Quesne and Pinnegar, 2012). The combined effects of direct (species level) and indirect (abiotic environment level) changes due to ocean acidification across the food web remain unknown. However, these relative impacts need to be understood in order to support effective and targeted environmental management. This study applies a modelling approach to examine the potential higher-level effects of the impacts of climate change and ocean acidification on marine ecosystems.

There is a growing body of evidence that ocean acidification can have a range of direct effects on marine organisms and processes (Fabry et al., 2008; Kroeker et al., 2010, 2013). However evidence of a physiological response to ocean acidification does not necessarily imply an ecological or system level response to ocean acidification (Le Quesne and Pinnegar, 2012). Potential system level responses of ocean acidification are most likely to occur where there is a clear relationship between the effect of ocean acidification and a system level process such as nutrient recycling or energy fluxes.

In this study we examine potential higher- and lower-trophic level effects of ocean acidification with the potential to affect ecosystem-wide dynamics by emulating two effects that have been demonstrated to occur in multiple independent studies. These effects that are examined are a decrease in microbial nitrification (Beman et al., 2011; Huesemann et al., 2002; Hutchins et al., 2009) and decline in growth efficiency in benthic calcifiers due to the increased energetic cost of calcification (Andersson et al., 2011). A decline in nitrification could reduce the supply of oxidised nitrogen; the nitrogen substrates that supports new primary production, leading to a shift in the phytoplankton community. An increase in the energetic cost of calcification could reduce growth efficiency and hence reduce trophic transfer efficiency of benthic calcifiers.

Here, modelling tools are used to provide a first indication of single and combined effects of direct and indirect impacts of climate change and ocean acidification on a marine food web. As such, these model experiments form a sensitivity study into effects of different pressures. The main objective is to estimate the relative impact of both changing climatic conditions and ocean acidification effects (direct and indirect effects) across a marine food web. To this end, a coupled ecosystem model was applied in selected locations around the North Sea (north-western European continental shelf), which described the abiotic and biotic environment up to commercial-size fish level. Impacts of future climatic conditions are compared with ocean acidification driven impacts on pelagic nitrogen cycling and growth efficiency of benthic organisms.

2 The applied ecosystem model

The model simulating the physical processes, chemical cycling and lower trophic level biological communities is GOTM-ERSEM-BFM. This water column model was developed in a joint effort by the Cefas (UK) and NIOZ (Netherlands) institutes with the specific aim to represent shallow shelf seas in detail. Higher trophic levels are simulated using a size-structured model.

2.1 Lower trophic levels

Water column hydrodynamics were simulated using the GOTM model (General Ocean Turbulence Model, see www.gotm.net and Burchard et al. (1999)). This model simulates the most important hydrodynamic and thermodynamic processes related to vertical mixing in natural waters, including different parametrisations for turbulent processes. The ERSEM-BFM model was used to simulate chemical cycling and lower trophic level communities: this model was jointly developed by Cefas and NIOZ from the original ERSEM and BFM codes. The ERSEM model (Baretta et al., 1995; Ruardij and Raaphorst, 1995; Ruardij et al., 1997; Ebenhöh et al., 1997) was developed in the 1990's to represent marine biogeochemical processes with the specific aim to model functional types (rather than species) and allow for internally varying nutrient ratio's within its organisms. It incorporates four phytoplankton types (diatoms, flagellates, picophytoplankton, dinoflagellates), four zooplankton types (microzooplankton, heterotrophic nanoflagellates, omnivorous and carnivorous mesozooplankton), 5 benthic types (megabenthos, deposit feeders, filter feeders, meiobenthos, in-faunal predators) and pelagic and benthic (aerobic and anaerobic) bacteria. The dynamic cycles for nitrogen, phosphorous, silicate, oxygen and carbon are included. The sediment is divided in three layers of varying depth: the oxic layer, denitrification layer and anoxic layer.

Subsequent reprogramming of ERSEM in Fortran 95 led to the formation of the more modular BFM model (Biological Flux Model, see <http://bfm-community.eu>) in the early 20th century. This code was applied in oceanic form (Vichi et al., 2003, 2004, 2007) but also in shelf seas applications (Ruardij et al., 2005). The ERSEM-BFM code applied here stems from further development by Cefas and NIOZ of the shelf seas BFM code: it therefore includes specific processes to represent shelf seas dynamics not found in ERSEM or BFM codes. Additional functional types include: small diatoms and *Phaeocystis* colonies in phytoplankton, pelagic filter feeder larvae in zooplankton and young filter feeders in benthos. Thus the ERSEM-BFM model includes benthic larvae with a distinct pelagic phase. Further additions include production of transparent exopolymer particles (TEP) by nutrient-stressed diatoms and *Phaeocystis*, leading to macro-aggregate formation and increased sinking rates. A simple SPM parameterisation, assuming proportionality to bed-shear stress induced by surface waves, has been included as described in Van der Molen et al. (2014) to improve representation of the underwater light climate. Improvements in benthic-pelagic coupling have led to a benthic module comprising 53 state variables, see Van der Molen et al. (2013) for more details

including validation for benthic-pelagic exchange. For other applications of the ERSEM-BFM model see van Leeuwen et al. (2013, 2015). A closed nitrogen budget was obtained for 1DV set-ups (one dimension vertical: a water column set-up) by re-introducing all lost nitrogen (N_2 escape to the atmosphere) as atmospheric deposition.

2.2 Higher trophic levels

A size-structured model was used to represent the higher trophic levels of the marine food web. This model (see Blanchard et al. (2009) for more details) incorporates the two main marine carbon pathways: via size-based predation (by pelagic or benthic predators) or via unstructured feeding based on a common food source (by detritivores, autotrophs and herbivores). The two modelled size-spectra (referred to here as fish/predators and detritivores) are linked via size-selective feeding of predators on detritivores. Fisheries yield is calculated as the mortality due to fishing pressure on commercial-sized fish (i.e. predators > 10 gram wet weight [gWW]).

Key processes as food assimilation, growth, mortality and fishing pressure are included, with ambient temperature effects on feeding rates (and thus growth) incorporated. The size-structured approach is a strong simplification of the complex marine food web, but has been shown effective in simulating marine biomass and abundance across the marine system (Blanchard et al., 2009, 2010). Without species representation the model is flexible enough to apply to different sites for long-term simulations, and allows for a qualitative description of the studied effects.

2.3 Coupling

Coupling of the lower and higher trophic level models was achieved one way upwards, with GOTM-ERSEM-BFM simulated, time-varying, plankton biomass (for diatoms, flagellates, picophytoplankton, microzooplankton and heterotrophic nanoflagellates) inserted in their respective size class of the higher trophic level predator size-spectrum (see Table 1). Benthic detritus from ERSEM-BFM was used as a time-varying food source for detritivores, while simulated sea surface and near-bed temperatures were used to control feeding rates for predators and detritivores respectively. There was no influence of higher trophic level biomass on lower trophic level dynamics. Fish predation mortality in ERSEM-BFM is simulated as cannibalism of the largest species, ensuring a dynamic mortality dependent on biomass. Thus both lower trophic level mortality and higher trophic level feeding were driven by lower trophic level biomass values, ensuring a proportionate response. Note that dinoflagellates and *Phaeocystis* were not used as food as these are predominantly inedible. Mesozooplankton was not included as food as it overlaps with the start of the pelagic predator size spectrum. The applied coupling allows bottom up pressures like indirect impacts on the abiotic environment to travel up the marine food web, with consequences for e.g. commercial fisheries yield.

Table 1. Distribution of planktonic food supply for pelagic predators

size range [g]	food source
10^{-12} - 10^{-9}	picophytoplankton, heterotrophic nanoflagellates
10^{-9} - 10^{-6}	diatoms, flagellates, microzooplankton
10^{-6} - 10^{-3}	diatoms, flagellates

Table 2. Overview of locations used. See also Fig. 1.

site	location	depth	hydrodynamic regime	substrate
North Dogger (ND)	[55.68 °N, 2.28 °E]	85 m	seasonally stratified	muddy sands
Oyster Grounds (OG)	[54.4 °N, 4.02 °E]	45 m	transitional waters	muddy sands
Southern Bight (SB)	[53.17 °N, 2.81 °E]	31 m	permanently mixed	mobile sands

125 2.4 Locations

Three locations have been chosen in the North Sea, a shallow shelf sea located on the European shelf (Fig. 1). The North Dogger (ND) site is located at [55.68 °N, 2.28 °E]. This site is characterised by seasonal, thermal stratification, a depth of 85 m and a muddy, sandy bed type. The Oyster Grounds (OG) site, at [54.4 °N, 4.02 °E], represents transitional waters with frequent seasonal thermal stratification of varying duration (i.e. large inter-annual variability), a medium depth of 45 m and typically a muddy-sandy substrate. The Southern Bight site (SB, also known as Sean Gas Field) is located at [53.17 °N, 2.81 °E] in the well-mixed area of the southern North Sea, and has a depth of 31 m and a mobile sandy bed. Together, the three sites represent two of the major stratification regimes in the North Sea area and transitional waters (which can vary between regimes), as shown in Fig. 1. For more details on the different regimes see van Leeuwen et al. (2015).

2.5 Model validation

Extensive validation of the GOTM-ERSEM-BFM model for the three sites has been published in Van der Molen et al. (2013). In general most variables were within the correct order of magnitude compared to observations. The model underestimated benthic detritus at ND and OG sites (due to underestimation of pelagic detritus supply and bioturbation) and general validation for bed and near-bed processes was poor for the SB site (due to lack of pore water exchange). Additional spatial validation results (showing representation of vertical distribution of phytoplankton) are available in van Leeuwen et al. (2013).

The lack of observations aggregated on the size-spectra scale hinders validation of the size-structured model representing the upper layers of the marine food web. Observations presented in Jennings et al. (2002) and Maxwell and Jennings (2006) (for predators and detritivores respectively)

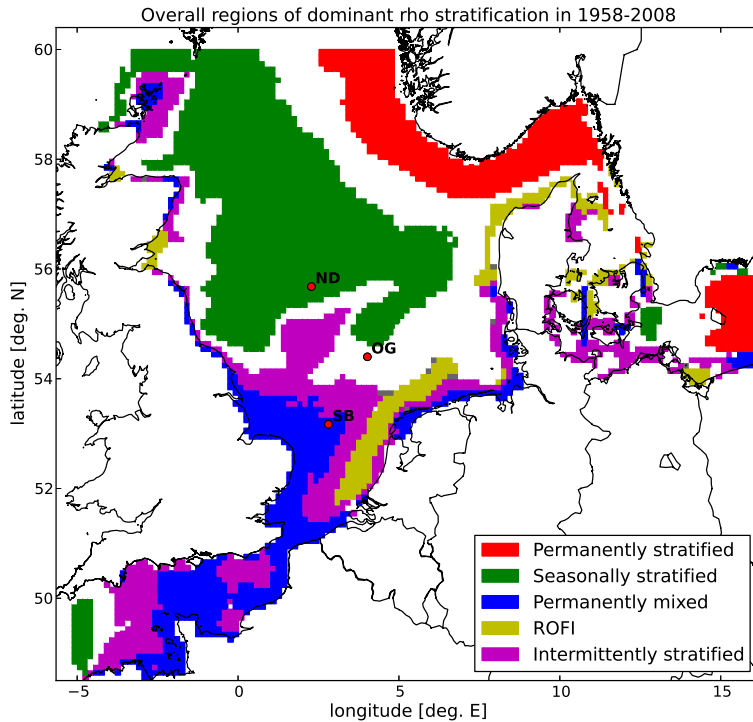


Figure 1. Location of the three sites in the North Sea, imposed on a map of dominant vertical density stratification regimes. ROFI stands for Regions of Fresh Water Influence. The white areas represent transitional waters, which experience large variability in duration of mixed and stratified conditions, defying classification. From van Leeuwen et al. (2015).

have shown good validation results in Blanchard et al. (2009) for the size-structured model alone. Here, data from Maxwell and Jennings (2006) were used for calibration of the ERSEM-BFM near-bed detritus levels (indicated to be underestimated by Van der Molen et al. (2013)) as supplied to size-spectrum model, while the data from Jennings et al. (2002) was used for validation. Calibration factors (multiplication of the benthic detritus supply to the size-based model) were 25, 2.5 and 5 for the ND, OG and SB sites respectively. Griffith et al. (2012) showed the importance of including fishing pressure combined with acidification and temperature pressures in an Australian ecosystem. Here fishing pressure was included in the model as a nominal pressure (based on ICES (2005)), but was not calibrated to represent site-specific mortalities.

A reference run with ECMWF meteorological forcing covering 1958-2008 was used for validation (European Centre for Medium-range Weather Forecasts, ERA-40 and ERA-15 data, UK Met Office). The selected validation period was 1979-2008 to allow for model spin up of the benthic system. Figure 2 shows the validation results for the resulting higher trophic levels in a normalised

160 Taylor diagram (Jolliff et al., 2009). This diagram shows the correlation coefficient (information regarding phase agreement, shown on the radial axis) and the normalised standard deviation (information regarding amplitude comparison, shown on polar axis) between modelled and observed data.

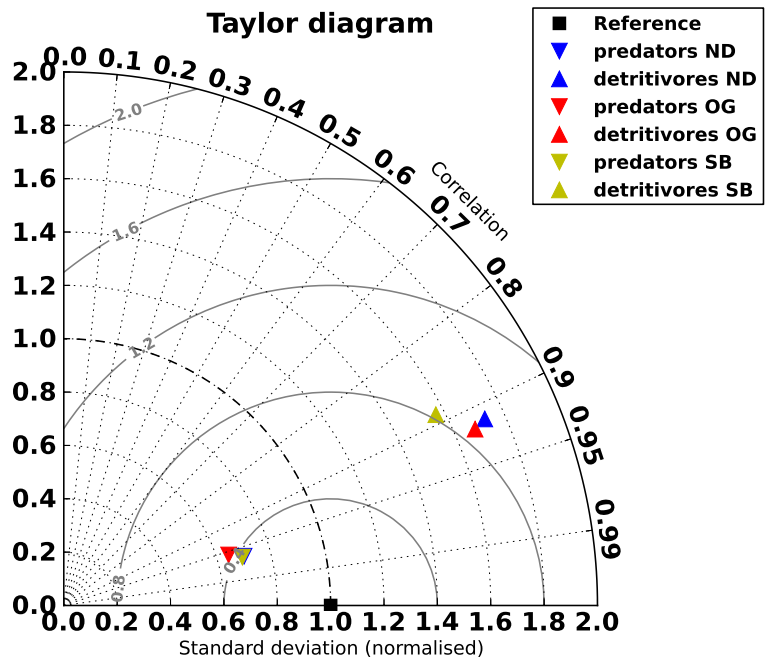


Figure 2. Taylor diagram for predator and detritivore abundance from the coupled model (51-year average) with respect to time-averaged observations. Note that observations for detritivores were used for calibration purposes, so that predator observations provide the only validation of the higher trophic levels here. Predator abundance results for the North Dogger site overlap with those of the Southern Bight site. The internal grey arcs represent the root-mean-square-error.

Validation results for the three sites are very similar, with high correlation factors, reflecting the general size-based structure of the marine ecosystem (Kerr , 1974; Sheldon et al., 1977; Kerr , 2001) and the small geographic area. More observations on a size spectrum scale are necessary to allow for any quantitative application of the size-based model. Note that the large difference in variability between predators and detritivores can indicate both a limitation of the model system (lacking stabilising processes for detritivores or benthic POC supply) or a limitation of the observational data applied (covering only one spring and one autumn cruise, therefore lacking a full seasonal signal and inter-annual variability between seasons).

2.6 Scenario setup

The objective of this paper is to provide a first qualitative estimate of effects of ocean acidification on the marine food web across trophic levels relative to climate change effects. To this end, we use a water column model in three separate sites which together are representative of a large part of the North Sea (see Fig. 1). Hydro-biogeochemical conditions at these sites were simulated for the period 1958-2008, using ECMWF forcing data (UK Met Office), for validation purposes (reference simulation). Future and past conditions were simulated for the period 1958-2089 (climate change simulation), using meteorological forcing from the Met Office Hadley Centre Regional Model Perturbed Physics Ensemble simulations (HadRM3-PPE-UK, see Met Office (2008-); Murphy et al. (2007)), as supplied by BADC (British Atmospheric Data Centre). These simulations focus on regional UK climate (1950-2100) and represent a historical and medium emissions scenario (SRESA1B). Only the unperturbed member of the ensemble was applied here as forcing, and data from the nearest HadRM3 grid cell (25 km resolution) for each site was used. For a detailed overview of climatological changes during the simulated period see Van der Molen et al. (2013), especially their Fig. 5. In general, the applied forcing is characterised by increasing air temperatures and decreasing cloud cover at all three sites. Pressure increases at all sites but with considerable inter-annual variability. Wind speeds show an increase in the period up to 2030, followed by a strong decrease at all sites. Relative humidity exhibits an increase at the ND and OG sites, but a decline at the SB site.

Three main impacts on the marine environment were studied:

1. climate change, acting on the abiotic environment, lower trophic levels and higher trophic levels,
2. decreased pelagic nitrification (indirect effect of ocean acidification, see Huesemann et al. (2002); Hutchins et al. (2009); Beman et al. (2011)), acting on the lower trophic levels and
3. reduced detritivore growth rate (direct effect, i.e. reduced growth of calcifying organisms, Doney et al. (2009); Andersson and Mackenzie (2011); Wicks and Roberts (2012) and references therein), acting on higher trophic levels.

Low, medium and high reduction rates were applied to allow for uncertainties in future emission predictions and acidification impact on different species. Table 3 lists the different scenario's and the parameter values used in each. For pelagic nitrification reductions of 10, 30 and 50% were applied, while for reduced detritivore growth rate reductions of 2,6 and 10 % were imposed. The latter values reflect not just observed reductions in calcifying capacity but also the percentage of simulated detritivores representing calcifying organisms. Note that community structure observations would be necessary to interpret localised effects of reduced detritivore growth rate. Climatic effects thus affect both fish and detritivore growth rates, while reduced growth efficiency is applied solely to detritivores.

Table 3. Simulated scenarios. p_sN4N3 is the pelagic specific nitrification rate (in 1/d) in ERSEM-BFM, while K_v represents the net growth conversion efficiency (–) for detritivores in the size-structured model. LTL refers to the lower trophic level model (ERSEM-BFM), HTL top the higher trophic level model (size-based code)

Scenario	Reference		Low		Medium		High	
Parameter	p_sN4N3	K_v	p_sN4N3	K_v	p_sN4N3	K_v	p_sN4N3	K_v
Reduction			10%	2%	30%	6%	50%	10%
Reference	0.16	0.2						
LTL			0.144	0.2	0.112	0.2	0.08	0.2
HTL			0.16	0.196	0.16	0.188	0.16	0.18
LTL+HTL			0.144	0.196	0.112	0.188	0.08	0.18

Simulations covered the period 1958-2098, of which the first 20 years are considered model spin up time. To estimate temperature impacts we calculated the relative difference in a variable between the 30-year averaged value for the period 1979-2009 (current state) and 2069-2098 (future state) of the climate change simulation. To estimate acidification effects we considered the relative difference in a variable in the period 2069-2098 (30 year averaged value) between the climate change simulation and the scenario simulation (climate change and ocean acidification). This approach differs from that used by Van der Molen et al. (2013), which compared results to a reference simulation (1958-2098) with repeated current climate conditions. A comparison study showed minor changes between the two approaches.

3 Impact of decreased pelagic nitrification and climate change

Published effects of ocean acidification impacts on pelagic nutrient supply include a predicted decline in water-column nitrification (Hutchins et al., 2009). The lower trophic level experiments mimic this effect by reducing the pelagic nitrification rate in the ERSEM-BFM model (parameter p_sN4N3). ERSEM-BFM does not explicitly model NH_3 or NO_2^- , so the nitrification rate relates to the transformation of NH_4^+ to NO_3^- . Note that processes related to NH_3 (NO_2^-) will be included via direct effects on the internal NH_4^+ (NO_3^-) pools. Urea is explicitly modelled in ERSEM-BFM, and forms an integral part of the models' nitrogen cycle.

Simulation results for biomass showed site-specific response, see Table 4 and Figs. S1, S2, S3.

3.1 North Dogger

The seasonally stratified site was characterised by a negative impact of future climate conditions on lower trophic level pelagic and benthic biomass levels (see also Figs. 3(a,b)). Net primary production increased due to increased metabolic processes (resulting in higher pelagic turn-over rates) and a lengthening of the growing season due to an earlier start of the spring bloom (Van der Molen et al.,

Table 4. Simulated results for lower trophic level impacts: percentage change for all sites and scenarios [%] (2069-2098 vs 1979-2009, T represent the climate change scenario) and actual values (gC/m²/d for lower trophic level results and gwetweight/m² for fisheries results) of depth-integrated, 30-year averages. The actual values refer to the period 1979-2009 of the climate change scenario simulation. POC refers to Particulate Organic Carbon.

variable		ND					OG					SB				
		Low	Med.	High	T	Actual	Low	Med.	High	T	Actual	Low	Med.	High	T	Actual
LTL Biomass	phytoplankton	0	1	2	-6	1.3	-0	-0	-1	-2	1.5	-0	-1	-1	11	1.5
	zooplankton	1	2	3	-2	0.5	-0	0	0	-2	0.5	-0	-0	-1	6	0.3
	pelagic bacteria	0	0	1	-1	0.5	-0	-1	-1	-3	0.3	-0	-1	-1	13	0.3
	benthos	0	-2	-5	-20	1.6	-0	0	-0	-17	3.5	-1	-4	-8	-19	1.6
	benthic bact.	1	2	4	-13	0.05	-0	-0	-0	-7	0.15	-0	-2	-4	-14	0.07
Primary production	net	1	2	3	11	0.3	0	-1	-1	10	0.4	-1	-2	-2	50	0.5
	Chlorophyll-a	1	0	3	-2	0.03	-0	-1	-1	2	0.03	-0	-1	-1	20	0.03
POC	pelagic	2	3	3	-10	16.2	0	-1	-1	-15	7.5	-0	-0	-1	0	15.8
	benthic	2	3	8	-4	4.1	-0	-0	-1	5	25.8	-1	-3	-7	0	11.3
HTL biomass	fish	24	24	30	20	3.1	-6	-8	-9	-6	2.7	25	21	17	27	1.8
	detritivores	13	13	30	6	2.4	10	12	14	10	4.2	-33	-38	-46	-32	2.6
	fish yield	33	33	42	27	2.0	0	-1	-1	1	1.9	16	11	5	18	1.2

230 2013). A strong increase in *Phaeocystis* was observed (Figs. 3(a)) but this was relative to originally very low biomass values ($6 \text{ mgC/m}^2/\text{d}$). Benthic biomass declined due to a decline in the (main) diatom food source, as a result of increased zooplankton grazing on diatoms. The rise in ambient water temperatures caused higher trophic level growth rates to increase (favouring fish as stratification limited near-bed temperature increases), resulting in higher biomass for both fish and detritivores despite
235 the minor decrease in planktonic food supply. Fish yield increased accordingly.

Ocean acidification effects on the abiotic environment (Fig. S1) showed only a minor impact on lower trophic level dynamics at this site. Percentage change for picophytoplankton (Figs. 3 (a), Fig. S1 (a)) was small due to high original biomass levels (highest of all the three sites) but increases were observed both in spring and summer accompanied by reduced grazing. Benthic biomass decline was due to decreased levels of filter feeders (the dominant functional group): all other benthic
240 functional groups increased their biomass levels (see Figs. 3(b), S1 (b)). Benthic bacteria biomass levels increased slightly as the benthic system became more bacterial orientated. Increased plankton biomass led to increased levels of particulate organic carbon (POC), causing increased levels of both fish and detritivore biomass due to increased food supply (Figs. S1 (c,d,i,j)). As a result,
245 fisheries yield increased (note that increased food supply and higher ambient temperatures caused a non-linear increase in higher trophic level biomass, resulting in large percentage differences for the separated acidification effects).

Overall, climatic changes and acidification impact on the abiotic environment both had a positive impact on future fisheries yield at this site, and were of a similar order of magnitude.

250 3.2 Oyster Grounds

Climate change impacts only reduced pelagic biomass slightly at this site, with a larger impact on benthic functional groups (Fig. 4(b)), indicating again a shift towards a more pelagic orientated system. Net primary production increased at this site, due to faster recycling of nutrients and a longer growing season (characterised by an earlier spring bloom due to reduced wind speeds, see
255 Van der Molen et al. (2013): Fig. 9). Onset of stratification (a trigger for diatom sinking) did not change significantly at this site, leading to a longer period of suspended diatoms and a reduction in near-bed diatom levels during spring (longer grazing period for zooplankton). This led to a decline in filter feeder biomass (due to a reduction of the main food supply) and a subsequent reduction in other benthic functional groups as pelagic-feeding filter feeders form the main carbon pathway into the
260 benthic system in the model (Van der Molen et al., 2013). As a result, benthic POC levels increased. The overall reduction in phytoplankton and zooplankton biomass did not significantly change the planktonic food supply for fish (Fig. 4(a), S2 (c), diatom increase compensated for loss of other functional groups). Predation on detritivores increased (Fig. S2(j), reflecting increased detritivore biomass) but fish predation declined (Fig. S2(i), reflecting decreased fish biomass), showing a change
265 in feeding behaviour for pelagic predators. Fisheries yield showed a negligible, positive change

(Fig. S2 (g,h)), indicating that fish biomass decrease was limited mainly to non-commercial size fish. The decline in fish biomass may therefore be due to increased predator growth rates causing increased predation pressure on smaller size fish.

Impacts of reduced nitrification (acidification impact) at this site were minor, as climate change effects countered acidification impacts with increasing sea temperatures. Decreased nitrification favoured organisms with a high ammonium affinity, like picophytoplankton (spring bloom increase) and dinoflagellates (autumn bloom increase at the expense of *Phaeocystis*). Fish biomass was negatively impacted while detritivores were marginally positively impacted (Figs. S2 (d,e)). Fisheries impacts were negligible.

In all, climatic effects dominated at this site over abiotic environmental effects of ocean acidification for lower trophic levels, but were of the same order of magnitude for higher trophic levels (except for detritivore levels, where the main driver was climate). Acidification effects showed a reduced signal strength with increasing climate impact on higher trophic levels, indicating a non-additive effect of the combined stressors. Impact on fisheries yield was positive (climate change) but became negligible in combination with the high acidification scenario.

3.3 Southern Bight

The well-mixed site in the southern bight showed a large increase in net primary production under future climate conditions (no OA effects included). Higher sea temperatures led to faster recycling of nutrients, and an associated increase in regenerated production. With a closed nutrient budget the main driver for the large productivity increase was likely the improved light conditions, as suggested by decreased cloud cover at this site and episodic reductions in SPM concentrations in summer (Van der Molen et al., 2013). Contrary to the other two sites the growing season did not lengthen here (Van der Molen et al., 2013). The large decline in diatoms resulted in a loss of benthos biomass (Fig. 5 (b)) and a shift towards a more pelagic orientated system. Increased planktonic biomass led to a decrease in planktonic food supply for fish (Fig. S3(c)) as the increases were limited to inedible functional groups (dinoflagellates and *Phaeocystis* colonies). Therefore increased growth rates for fish are deemed responsible for the large increase in fish biomass and associated fisheries yield (Figs. S3(d,g)). Predation mortality biomass for detritivores remained constant (Fig. S3(j)) , indicating increased predation on lower biomass levels.

Reduction of pelagic nitrification rates (acidification impact) resulted in higher pelagic ammonium concentrations and lower nitrate levels, favouring phytoplankton species with high ammonium preference like picophytoplankton (also experiencing decreased predation) and dinoflagellates (Fig. 5(a), S3(a)). Accompanying loss of diatom and *Phaeocystis* biomass led to virtually no effect on overall plankton biomass and net primary production levels. Benthic biomass decreased due to decreased diatom levels (a main food source for suspension feeders) and decreased pelagic detritus generation, resulting in less benthic detritus (both labile and particulate) and associated loss of benthic bacteria

(also a food source for benthos). Planktonic food supply for fish decreased more with increased climate pressure, again displaying a non-additive response. Fish and detritivore levels were negatively impacted by indirect acidification impacts (Fig. S3(d,e)).

305 Here, climate effects dominated over acidification effects on the abiotic environment for lower trophic levels, showing a strong shift towards a more pelagic oriented system. Impacts on higher trophic level biomass were of the same order of magnitude but of opposing trend for fish (same negative trend for detritivores). Fish biomass increased and detritivore biomass decreased, but fisheries yield (trend) depended strongly on acidification impact strength.

310 **4 Impact of reduced detritivore growth rate and climate change**

Reduced growth of calcifying organisms was represented by reductions in the size-based model of the net growth conversion efficiency for organisms in the detritivore size-spectrum (parameter K_v). Modelled growth rates therefore depend on ambient temperature, growth conversion efficiencies and food availability, see Blanchard et al. (2009). Results are presented in Table 5 and Fig. S4, S5, S6.

315 **4.1 North Dogger**

The deeper, seasonally stratified site showed that impact of ocean acidification effects on species level could be of the same order of magnitude as climatic impacts (Fig. S4), with dominant impact on parts of the ecosystem (here detritivore levels). The negative impact of reduced detritivore growth rates was initially offset by increased food supply (POC), but showed a strong negative effect for the
320 medium and high impact scenario's, resulting in lower detritivore biomass than current conditions. This reduction in part of the food supply for fish led to lower fish biomass with strengthening of the acidification impact (general increase due to increased planktonic food supply and increased growth rates).

325 Combined effects indicated increased biomass for fish (climatic impact modified by species-level acidification impact) and decreased levels of detritivore biomass (species-level acidification impact), resulting in increased fisheries yield during the spring bloom under future conditions (Fig. S4(h)).

4.2 Oyster Grounds

At the mid-depth, seasonally stratified site the benthic system forms an integral part of the local ecosystem (Van der Molen et al., 2013). As such, a reduction in detritivore growth efficiency led to
330 a stronger effect on fish biomass than at the other two sites, as fish were more dependent on the detritivore food source (see Fig. S5 (d,e,i,j)). The larger impact on fisheries shows that the pelagic impact mainly affected commercial size species.

With only a limited climatic impact at this site the species-level acidification impact dominated fish dynamics, resulting in biomass loss and declined fisheries yield. Both impacts were of similar

Table 5. Simulated results for higher trophic level impacts only: percentage change for all sites and scenarios [%] (2069-2098 vs 1979-2009, T represent the climate change scenario) and actual values (gwtweight/m²) of depth-integrated, 30-year averages. The actual values refer to the period 1979-2009 of the climate change scenario simulation.

variable		ND					OG					SB				
		Low	Med.	High	T	Actual	Low	Med.	High	T	Actual	Low	Med.	High	T	Actual
HTL biomass	predator biomass	18	15	12	20	3.1	-9	-13	-18	-6	2.7	25	21	17	27	1.8
	detritivore biomass	1	-8	-17	6	2.4	6	-2	-11	10	4.2	-35	-42	-48	-32	2.6
	fish yield	25	20	15	27	2.0	-3	-10	-17	1	1.9	15	9	4	18	1.2

335 order for detritivores, with climate impacts resulting in increased growth rates (Fig. S5 (f)) despite
the reduction applied for calcifying organisms.

4.3 Southern Bight

Reduced growth efficiency for detritivores also led to decreased detritivore biomass at the well mixed
site (see also Fig. S6), with fish biomass increases (buoyed by climate-induced increased growth
340 rates) modified due to a reduced detritivore food source (Fig. S6(e,i,j): predated detritivore biomass
nearly equalled predated fish biomass under combined stressors).

Climatic impacts dominated over species-level ocean acidification impacts at this site for fish,
but were of the same order for detritivores, with temperature-induced decline of detritivore biomass
significantly enhanced by the direct acidification impact. Fisheries yield was predicted to increase
345 due to climatic impacts (summer increase, winter decrease).

5 Combined effects: sensitivity of future fisheries yield

Results for combined impacts from climate and direct and indirect ocean acidification are listed in
Table 6 and visualised in Fig. 3,4,5.

5.1 North Dogger

350 Climatic effects and acidification impacts (both abiotic and biotic) were of the same order of magni-
tude at the seasonally stratified site, with positive results for future fish yields. Indirect ocean acid-
ification impacts compensated for losses due to reduced growth efficiency of detritivores, leading
to increases in fish and detritivore biomass driven by climate change (Fig. 3(d,e), S1(d,e), S4(d,e)).
Planktonic fish food supply declined due to climatic impacts, but the decline was moderated by posi-
355 tive impacts from acidification effects on the abiotic environment (Fig. 3(c)). The pelagic food source
for predators increased accordingly (climate impact, including increased growth rates, Fig. 3(i)),
while the detritivore food source increased due to climatic impacts (Fig. 3(j)). Fish yield increased
(Fig. 3(g)), mainly during the spring bloom and pre-spring bloom periods (Fig. 3(h)).

5.2 Oyster Grounds

360 Dynamics at the Oyster Grounds site changed mainly due to direct acidification impacts, as ben-
thic communities form an important part of the local ecosystem. Fish biomass declined over time
due to acidification impacts on species level (Fig. 4(d)) while the trend for detritivore levels was
strongly dependent on the strength of the acidification impact on species level (Fig. 4(e)). Detriti-
vore growth rates increased over time (Fig. 4(f)), but increases were heavily modified due to direct
365 acidification impacts. The larger direct acidification impact on pelagic predators compared to detri-
tivores (Fig. S5(d,e)) suggests a strong resilience of the comparatively large benthic system at this

Table 6. Simulated results for combined lower and higher trophic level impacts: percentage change for all sites and scenarios [%] (2069-2098 vs 1979-2009, T represent the climate change scenario) and actual values (gwtweight/m²) of depth-integrated, 30-year averages. The actual values refer to the period 1979-2009 of the climate change scenario simulation.

variable		ND					OG					SB				
		Low	Med.	High	T	Actual	Low	Med.	High	T	Actual	Low	Med.	High	T	Actual
HTL biomass	predator biomass	22	19	22	20	3.1	-9	-15	-20	-6	2.7	23	16	9	27	1.8
	detritivore biomass	8	-2	2	6	2.4	6	-0	-8	10	4.2	-37	-47	-60	-32	2.6
	fish yield	31	25	28	27	2.0	-3	-11	-18	1	1.9	13	3	-7	18	1.23

North Dogger

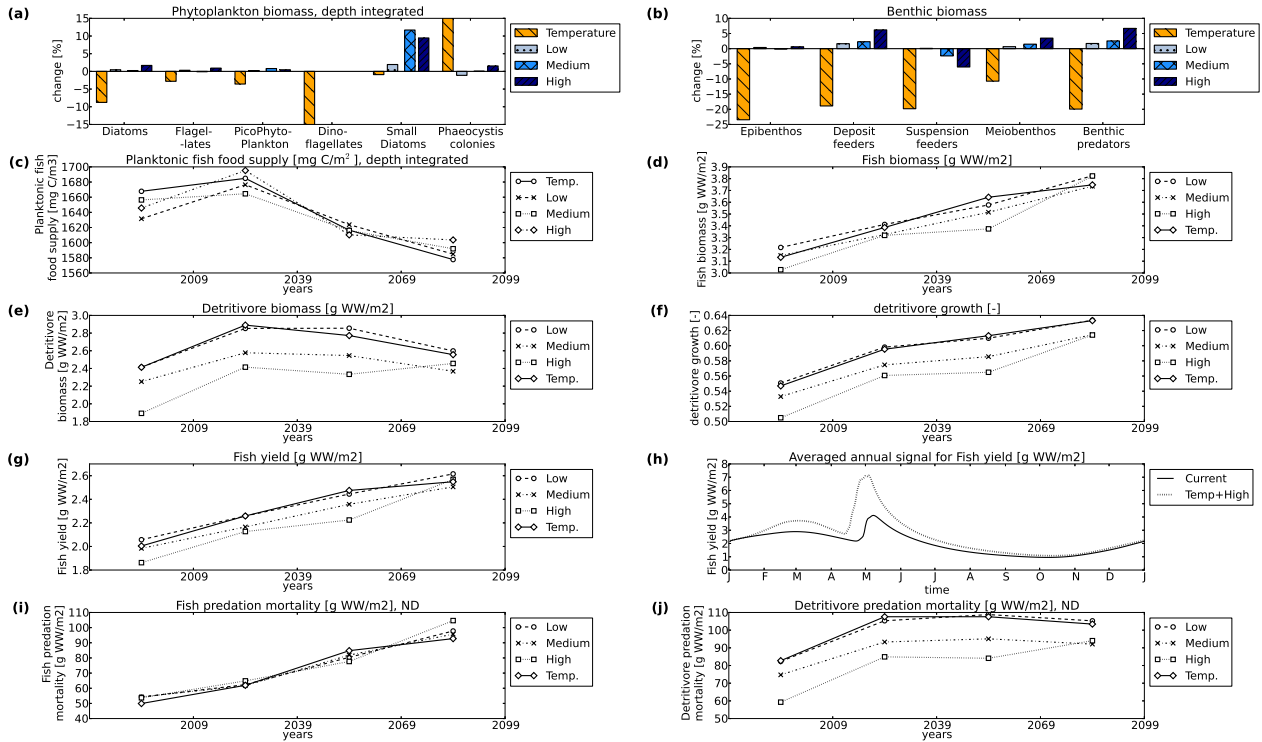


Figure 3. North Dogger: 30-year averaged values, climatic plus high ocean acidification (LTL+HTL) effects: (a) phytoplankton changes [%], (b) benthos changes [%], both 2069-2098 change compared to 1979-2009, (c) planktonic fish food, (d) fish or pelagic predator biomass, (e) detritivore biomass, (f) detritivore growth rates, (g) fish yield, (h) annual fish yield, signal for the current time (1979-2008 climate scenario) and the high impact scenario (2069-2098 climatic plus LTL+HTL acidification effects) signal, (i) predated biomass for pelagic predators and (j) predated biomass for detritivores. Maximum values outside of axis range for phytoplankton changes are -100 % for dinoflagellates (small levels were wiped out) and +241 % for *Phaeocystis* (small original biomass).

site. Planktonic fish food supply increased slightly due to indirect acidification impacts (Fig. 4(c), increased values compared to climate change scenario), but could not counteract the decline in pelagic predators due to all stressors (climate change, indirect and direct acidification impact). Fisheries yield decreases accordingly (Fig. 4(g), acidification scenario's vs Temp scenario), with the main decline in the winter period (Fig. 4(h)).

Oyster Grounds

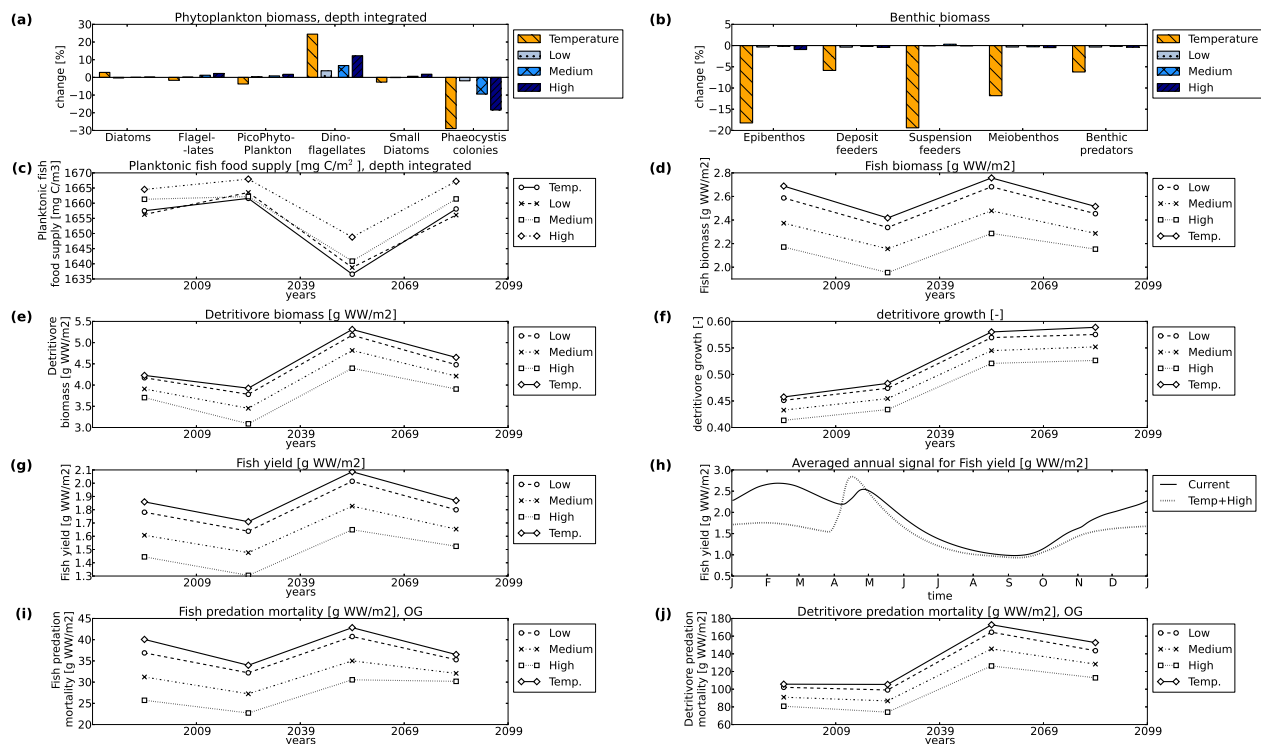


Figure 4. Oyster Grounds: 30-year averaged values, climatic plus high ocean acidification (LTL+HTL) effects: (a) phytoplankton changes [%], (b) benthos changes [%], both 2069-2098 change compared to 1979-2009, (c) planktonic fish food, (d) fish or pelagic predator biomass, (e) detritivore biomass, (f) detritivore growth rates, (g) fish yield, (h) annual fish yield, signal for the current time (1979-2008 climate scenario) and the high impact scenario (2069-2098 climatic plus LTL+HTL acidification effects) signal, (i) predated biomass for pelagic predators and (j) predated biomass for detritivores.

5.3 Southern Bight

Climatic and acidification effects were equally important at the well-mixed site. Fish biomass increased due to climatic impacts, but was heavily modified by indirect and direct acidification impacts (Fig. 5(d), S3(d), S6(d)). Detritivore biomass declined due all stressors (Fig. 5(e), S3(e), S6(e)), with a dominant role for acidification effects (abiotic environment and species level). Detritivore growth rates remained more or less equal when combined effects were applied (Fig. 5(f), High scenario 2069-2098 result compared to Temp scenario 1979-2008), while planktonic food supply for fish was reduced mainly due to climatic effects (Fig. 5(c)). Changes to fisheries yield depended strongly on the strength of acidification impacts, affecting all seasons and showing a strong decline in winter and

Southern Bight (Sean Gas Field)

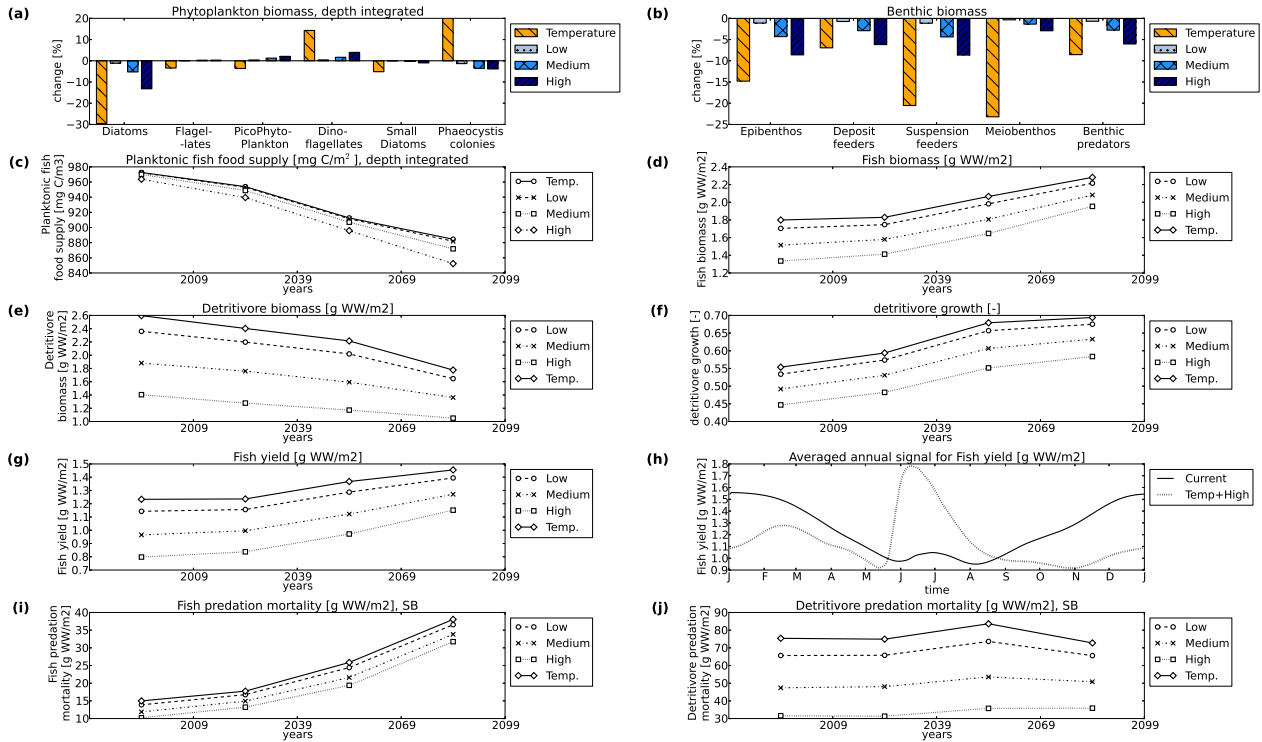


Figure 5. Southern Bight: 30-year averaged values, climatic plus high ocean acidification (LTL+HTL) effects: (a) phytoplankton changes [%], (b) benthos changes [%], both 2069-2098 change compared to 1979-2009, (c) planktonic fish food, (d) fish or pelagic predator biomass, (e) detritivore biomass, (f) detritivore growth rates, (g) fish yield, (h) annual fish yield, signal for the current time (1979-2008 climate scenario) and the high impact scenario (2069-2098 climatic plus LTL+HTL acidification effects) signal, (i) predated biomass for pelagic predators and (j) predated biomass for detritivores. Maximum values outside of axis range for phytoplankton changes are 108 % for *Phaeocystis*.

strong increase in summer (Fig. 5(g,h)). Feeding behaviour showed a strong increase in the reliance on the pelagic food source for fish as detritivore biomass levels decreased (Fig. 5(i,j)).

6 Discussion

Results presented in the last section show regionally differing responses to future pressures. This high spatial variability was also reported by Artioli et al. (2014) using a fully three dimensional shelf
 385 seas model, and can be seen in Skogen et al. (2014) for the Arctic region and in Blanchard et al. (2012) for 11 regional seas. The use of 3D models adds advective processes, land-based nutrient

sources and far-field influences, but generally lacks specific local parameter settings (here bed porosity and increased vertical resolution). As such, the two approaches are complementary. Advective processes and oceanic changes have the potential to outweigh local response. This applies mainly to ocean acidification impacts, as climatic impacts are predominantly a direct response to local meteorology (unless large scale circulation patterns are altered). Nevertheless, changes in rainfall patterns can cause significant changes in nutrient inputs in shelf seas. The less computationally expensive water column model also allows for many scenario simulations to be performed within a reasonable time frame, and is therefore very suitable for scenario studies including different pressures at different impact levels.

Here, the use of three separate sites within one shelf sea, each calibrated and validated independently (Van der Molen et al., 2013), allows for these regional differences to be investigated. Results for sites located in stable hydrodynamic regimes (North Dogger, Southern Bight) can be indicative for the system stressor response in the associated regime areas (see Fig. 1). However, results for the Oyster Grounds (located in transitional waters) should be interpreted as relating to areas of thermal stratification of varying duration during summer (1-6 months), with medium depths (40-50 m).

The study only emulated the potential impact of two different mechanisms of ocean acidification impacts on marine organisms and marine ecosystem functioning. The outcomes of the study will be sensitive to the assumption regarding the nature of the direct impact of ocean acidification. However when looking at whole-system level effects emulating acidification effects is challenging based on current understanding of ocean acidification and ecological processes. Where there is no clear effect on a system level process, individual species level effects may just lead to changes in community composition with little impact at a whole-system level. Similarly model limitations should also be considered. ERSEM-BFM is one of the most advanced lower trophic level models available, incorporating (besides multiple functional groups with internally varying nutrient ratio's): nitrifying bacteria, urea, TEP, benthic diatoms, pelagic filter feeder larvae and an extensive benthic module (including pore water processes, bio-irrigation and bio-turbation). Nevertheless, it remains a simplification of the marine ecosystem. Temperature controls virtually every biological process, and as such any temperature change can be expected to have a large impact on simulated results. The main conclusions therefore cannot identify whether climate impacts are dominant (if they are, this might be the results of the model's extensive implementation of temperature), but can indicate if simplified ocean acidification impacts are of comparable order to fully included climatic effects. The results showed that this is the case for both the seasonally stratified site and the permanently mixed site, with the site located in transitional waters exhibiting a dominant impact due to ocean acidification. This aligns with the conclusion from Griffith et al. (2012) that ocean acidification was the main driver in a study considering the separate and combined impacts of fishing, acidification and ocean warming. With respect to the applied size-structured model, both temperature and acidification impacts have been included in limited form. Other environmental consequences (e.g. low oxygen levels, see

425 Van der Molen et al. (2013) for future predictions at these sites) have not been included directly in
the higher trophic level model. It assumes a size distribution of biomass, neglecting species charac-
teristics, seasonal reproduction and life stages. As such, it can provide qualitative information about
future trends in marine biomass and fish yield, but cannot predict effects on specific commercial
species (cold-water species may be replaced by warmer-water ones, see e.g. Cheung et al. (2010)
430 for related impacts on fish yield) or the associated fisheries-landings value. Only a nominal fishing
pressure was applied: changes in fishing pressure have the potential to aggravate or relieve the im-
pacts of future pressures. This also applies to the usage of the medium emissions scenario, which
is dependent on future management of carbon emissions. Note that the interaction of ambient tem-
perature and abiotic and/or species-level acidification impacts is non-linear: the presented values for
435 acidification impacts alone are indicative of the trend due to acidification effects under future cli-
mate conditions, but should not be interpreted as percentage changes likely to occur under current
climate conditions and increased CO₂ levels. Indeed, the results presented here should be seen as a
sensitivity test of marine response to future pressures, rather than a prediction of future yields.

Finally, the linkage between the lower and higher trophic level model allowed for impact as-
440 sessment of bottom-up pressures like climate change and acidification throughout the food web.
However, top-down pressures like fishing effort only impacted the higher end of the food chain,
with no mechanism included to allow for top-down pressures to impact on lower trophic level dy-
namics. Thus, if fishing pressure is to be included in future studies comparing marine pressures a
2-way coupled approach is necessary, with fish biomasses impacting on planktonic-level organisms
445 and associated nutrient cycling. This would also ensure feedback of other predator changes (e.g.
increased feeding rates due to increased sea temperature, more pelagic-oriented feeding) on plank-
tonic biomass, which are not included in one-way coupling. A 2-way coupling should also address
the issue of overlapping size-spectra: now the intermediate size range of mesozooplankton and the
larger benthic groups are represented by both models. This is not expected to have a large impact on
450 results as all overlapping groups are driven by the same food supply and similar (biomass-related)
mortalities. But a 2-way coupled system needs to eliminate overlapping processes between food sup-
ply and mortality to ensure a dynamically balanced system where biomass levels are equally driven
by food availability and predation pressure. The bottom-up stressor of nutrient supply should also
be considered in future studies, as changes in nutrient availability can change lower trophic level dy-
455 namics considerably. However, for the North Sea future changes in nutrient supply should take into
account changes in Atlantic sources (Holt et al., 2012) as well as land-based sources (Painting et al.
(2013), their Fig. 4). When considering multiple stressors like acidification, climate change, nutrient
supply and fishing pressure the interactions of different pressures should be studied using statistical
techniques such as the Hedges-d method: this was applied in Griffith et al. (2012) with respect to
460 ocean warming, ocean acidification and fishing pressure in Australian marine waters. They showed
that interactions between pressures could lead to less than or more than the additive response of

the system: for instance, fishing pressure counteracted negative effects from acidification on benthic invertebrates by relieving predation pressure. Similar results were found in this study, as climate-change induced increases in biomass were counteracted by acidification impacts, with non-additive response. Together with different impact level studies like the one presented here these methods have the potential to provide a good indication of future marine response to known pressures.

7 Conclusions

This article has provided a first indication of future trends in fisheries harvests, based on a sensitivity study into impacts from both climatic changes and ocean acidification (abiotic and biotic) effects in an economically important shelf sea. To this end we applied a coupled ecosystem model (simulating the hydrodynamics, nutrient cycling, plankton, benthos, fish and detritivore biomass) to three hydrodynamically different sites in the North Sea. Results showed high regional variability and an overall shift towards more pelagic oriented systems (due to temperature-induced increased pelagic recycling and acidification impacts on benthic organisms). Fisheries yield displayed an inclination to increase in large parts of the North Sea due to climate change effects, as reported by Blanchard et al. (2012). However, the strength of ocean acidification impacts on both the abiotic and biotic level has the potential to severely mediate this positive impact on fisheries harvest for permanently mixed areas.

The three sites also showed local responses depending on the governing hydrodynamic regime and relative importance of the benthic system:

480 - **Seasonally stratified areas**

Acidification impacts were of the same order of magnitude as climatic impacts, with indirect and direct acidification effects exhibiting opposing trends. Fisheries yield indicated a positive trend, with both stressors contributing to increased yields which mainly occurred in winter and spring.

485

- **Transitional areas**

Ocean acidification impacts dominated over climatic effects, reflecting the large benthic system at this site and its importance in transporting carbon to higher trophic levels. Fisheries were predicted to be negatively impacted, mainly due to ocean acidification impacts on species level (due to the relatively large importance of the benthic system). Fish yield under the projected circumstances was predicted to decline, particularly in winter months.

490

- **Well-mixed areas**

Climatic impacts were of the same order of magnitude as acidification impacts, with a dominant acidification impact on detritivore levels. Increases in fisheries yield were predicted due

495

500 to more pelagic recycling and increased primary production, but any quantitative change will depend heavily on the strength of acidification effects on both the abiotic environment and the species level (assuming no change in nutrient supply). Changes in fish yield were equally distributed over the seasons when impacts were of similar strength, with predicted reduced yield in winter and increased yield in summer.

Acknowledgements. This work was enabled through Cefas Seedcorn project DP282 and Defra project ME5216: Impacts from climate change on ocean acidification on Fisheries and Marine Biodiversity (IFMA). Data used for validation was obtained from Jennings et al. (2002) and Maxwell and Jennings (2006). The authors want to thank Dr. Laurent Bopp (editor), Dr. Beth Fulton (reviewer), one anonymous reviewer and Dr. Jean-Pierre Gattuso for the constructive and knowledgeable feedback received. As always, the manuscript is the better for it.

References

- Andersson, A. J. and Mackenzie, F. T.: Ocean acidification: setting the record straight, *Biogeosciences Discuss*, 8, 6161–6190, doi:10.5194/bgd-8-6161-2011, 2011.
- 510 Andersson, A. J. and Mackenzie, F. T. and Gattuso, J.-P.: Ocean acidification: effects of ocean acidification on benthic processes, organisms and ecosystems, p. 122–153, Oxford University Press, Oxford, 2011.
- Artioli, Y., Blackford, J. C., Nondal, G., Bellerby, R. G. J., Wakelin, S. L., Holt, J. T., Butenschön, M., and Allen, J. I.: Heterogeneity of impacts of high CO₂ on the North Western European Shelf, *Biogeosciences*, 11, 601–612, doi:10.5194/bg-11-601-2014, 2014.
- 515 Baretta, J. W., Ebenhöh, W., and Ruardij, P.: The European Regional Seas Ecosystem Model: a complex marine ecosystem model, *J. Mar. Res.*, 33, 233–246, 1995.
- Beman, J. M., Chow, C.-E., King, A. L., Feng, Y., Fuhrman, J. A., Andersson, A., Bates, N. R., Popp, B. N., and Hutchins, D. A.: Global declines in oceanic nitrification rates as a consequence of ocean acidification, *Proceedings of the National Academy of Sciences*, 108, 208–213, doi:10.1073/pnas.1011053108, 2011.
- 520 Blanchard, J. L., Jennings, S., Law, R., Castle, M. D., McCloghrie, P., Rochet, M.-J., and Benoit, E.: How does abundance scale with body size in coupled size-structured food webs?, *J. of An. Ecol.*, 78, 270–280, doi:10.1111/j.1365-2656.2008.01466.x, 2009.
- Blanchard, J. L., Law, R., Castle, M. D., and Jennings, S.: Coupled energy pathways and the resilience of size-structured food webs, *Theoretical Ecology*, 4, 289–300, doi:10.1007/s12080-010-0078-9, 2010.
- 525 Blanchard, J. L., Jennings, S., Holmes, R., Harle, J., Merino, G., Allen, J. I., Holt, J., Dulvy, N. K., and Barange, M.: Potential consequences of climate change for primary production and fish production in large marine ecosystems, *Phil. Trans. R. Soc. B*, 367, 2979–2989, doi:10.1098/rstb.2012.0231, 2012.
- Burchard, H., Bolding, K., and Villareal, M. R.: GOTM - a general ocean turbulence model. Theory, applications and test cases, Tech. Rep. EUR 18745 EN, European Commission, 1999.
- 530 Cheung, W. W. L., Lam, V. W. Y., Sarmiento, J. L., Kearney, K., Watson, R., Zeller, D., and Pauly, D.: Large-scale redistribution of maximum fisheries catch potential in the global ocean under climate change, *Glob. Change Biol.*, 16, 24–35, doi:10.1111/j.1365-2486.2009.01995.x, 2010.
- Doney, S. C., Fabry, V. J., Feely, R. A., and Kleypas, J. A.: Ocean Acidification: The Other CO₂ Problem, *Annual Review of Marine Science*, 1, 169–192, doi:10.1146/annurev.marine.010908.163834, 2009.
- 535 Ebenhöh, W., Baretta-Bekker, J. G., and Baretta, J. W.: The primary production module in the marine ecosystem model ERSEM II, with emphasis on the light forcing, *J. Sea Res.*, 38, 173–193, 1997.
- Fabry, V. J., Seibel, B. A., Feely, R. A., and Orr, J. C.: Impacts of ocean acidification on marine fauna and ecosystem processes, *ICES J. of Mar. Sc.*, 65, 414–432, doi:10.1093/icesjms/fsn048, 2008.
- Gattuso, J. P., Bijma, J., Gehlen, M., Riebesell, U., and Turley, C.: Ocean acidification: knowns, unknowns and perspectives, p. 291–313, Oxford University Press, Oxford, 2011
- 540 Griffith, G. P., Fulton, E. A., Gorton, R. and Richardson, A. J.: Predicting Interactions among Fishing, Ocean Warming, and Ocean Acidification in a Marine System with Whole-Ecosystem Models, *Conservation Biology*, 26 (6), 1145–1152, doi:10.1111/j.1523-1739.2012.01937, 2012.
- Holt, J., Hughes, S., Hopkins, J., Wakelin, S. L., Holliday, N. P., Dye, S., Gonzalez-Pola, C., Hjøllø, S. S., Mork, K. A. and Nolan, G. and Proctor, R. and Read, J. and Shammon, T. Sherwin, T. and Smyth, T. and Tattersall, G. and Ward, B. and Wiltshire, K. H.: Multi-decadal variability and trends in the temperature of

the northwest European continental shelf: a model-data synthesis, *Progress in Oceanography*, 109, 96–117, doi:10.1016/j.pocean.2012.08.001, 2012.

Huesemann, M. H., Skillman, A. D., and Crecelius, E. A.: The inhibition of marine nitrification by ocean
550 disposal of carbon dioxide, *Marine Pollution Bulletin*, 44, 142–148, doi:10.1016/S0025-326X(01)00194-1, 2002.

Hutchins, D. A., Mulholland, M., and Fu, F. X.: Nutrient cycles and marine microbes in a CO₂-enriched ocean, *Oceanography*, 22, 128–145, 2009.

ICES: Report of the study group on multispecies assessment in the North Sea (SGMSNS), ICES headquarters,
555 Copenhagen, Denmark, D06, 163 p., 2005.

Jennings, S., Warr, K. J., and Mackinson, S.: Use of size-based production and stable isotope analyses to predict trophic transfer efficiencies and predator-prey body mass ratios in food webs, *Mar. Ecol. Prog. Ser.*, 240, 11–20, doi:10.3354/meps240011, 2002.

Jolliff, J. K., Kindle, J. C., Shulman, I., Penta, B., Friedrichs, M. A., Helber, R., and Arnone, R. A.: Summary
560 diagrams for coupled hydrodynamic-ecosystem model skill assessment, *Journal of Marine Systems*, 76, 64–82, doi:10.1016/j.jmarsys.2008.05.014, 2009.

Kerr, S. R.: Theory of size distribution in ecological communities, *J. Fish Res. Board Can.*, 31, 1859–1862, doi:10.1139/f74-241, 1974.

Kerr, S. R., and Dickie, L. M.: The biomass spectrum: a predator-prey theory of aquatic production, Columbia
565 University Press, New York, 2001.

Kroeker, K. J., Kordas, R. L., Crim, R. N., and Singh, G. G.: Meta-analysis reveals negative yet variable effects of ocean acidification on marine organisms, *Ecology Letters*, 13, 1419–1434, doi:10.1111/j.1461-0248.2010.01518.x, <http://dx.doi.org/10.1111/j.1461-0248.2010.01518.x>, 2010.

Kroeker, K. J., Kordas, R. L., Crim, R. N., Hendriks, I. E., Ramajo, L., Singh, G. S., Duarte, C. M. and Gattuso, J.-P.: Impacts of ocean acidification on marine organisms: quantifying sensitivities and interaction with
570 warming, *Global Change Biology*, 19, 1884–1896, doi:10.1111/gcb.12179, 2013.

Le Quesne, W. J. F. and Pinnegar, J. K.: The potential impacts of ocean acidification: scaling from physiology to fisheries, *Fish and Fisheries*, 13, 333–344, doi:10.1111/j.1467-2979.2011.00423.x, 2012.

Liu, J., Weinbauer, M. G., Maier, C., Dai, M., and Gattuso, J. P.: Effect of ocean acidification on microbial diversity and on microbe-driven biogeochemistry and ecosystem functioning, *Aquat. Microb. Ecol.*, 61, 291–305,
575 doi:10.3354/ame01446, 2010.

Maxwell, T. A. D. and Jennings, S.: Predicting abundance-body size relationships in functional and taxonomic subsets of food webs, *Oecologia*, 150, 282–290, doi:10.1007/s00442-006-0520-2, 2006.

Met Office, H. C.: HadRM3-PPE-UK, [http://badc.nerc.ac.uk/view/badc.nerc.ac.uk\\$_\\$ATOMS\\$_\\$dataent\\$_\\$12178667495226008,](http://badc.nerc.ac.uk/view/badc.nerc.ac.uk$_$ATOMS$_$dataent$_$12178667495226008,)
580 2008-.

Murphy, J. M., Booth, B. B. B., Collins, M., Harris, G. R., Sexton, D. M. H., and Webb, M. J.: A methodology for probabilistic predictions of regional climate change from perturbed physics ensembles, *Phil. trans. R, Soc., A* 365, 1993–2028, doi:10.1098/rsta.2007.2077, 2007.

Painting, S., Foden, J., Forster, R., van der Molen, J., Aldridge, J. N., Best, M., Jonas, P., Hydes, D., Walsham, P., Webster, L., Gubbins, M., Heath, M., McGovern, E., Vincent, C., Gowen, R., and O’Boyle, S.: Impacts of

- climate change on nutrient enrichment, *MARINE CLIMATE CHANGE IMPACTS PARTNERSHIP Science Review*, 219-235, Lowestoft, UK, doi:10.14465/2013.arc23.219-235, 2013.
- Ries, J. B., Cohen, A. L., and McCorkle, D. C.: Marine calcifiers exhibit mixed responses to CO₂-induced ocean acidification, *Geology*, 37, 1131–1134, doi:10.1130/G30210A.1, 2009.
- 590 Ruardij, P. and Raaphorst, W.: Benthic nutrient regeneration in the ERSEM-BFM ecosystem model of the North Sea, *J. Sea Res.*, 33, 453–483, doi:10.1016/0077-7579(95)90057-8, 1995.
- Ruardij, P., Van Haren, H., and Ridderinkhof, H.: The impacts of thermal stratification on phytoplankton and nutrient dynamics in shelf seas: a model study, *J. Sea Res.*, 38, 311–331, doi:10.1016/S1385-1101(97)00042-7, 1997.
- 595 Ruardij, P., Veldhuis, M. J. W., and Brussard, C. P. D.: Modeling the bloom dynamics of the polymorphic phytoplankter *Phaeocystis globosa*: impact of grazers and viruses, *Harmful Algae*, 4, 941–963, doi:10.1016/j.hal.2004.12.011, 2005.
- Sheldon, R. W., Sutcliffe Jr, W. H., and Paranjape, M. A.: Structure of pelagic food chain and relationship between plankton and fish production, *J. Fish. Res. Board Can.*, 34, 2344–2355, doi:10.1139/f77-314, 1977.
- 600 Skogen, M. D., Olsen, A., Yngve Børshheim, K., Britt Sandø, A., and Skelvan, I.: Modelling ocean acidification in the Nordic and Barents Seas in present and future climate, *J. Mar. Sys.*, 131, 10–20, doi:10.1016/j.jmarsys.2013.10.005, 2014.
- Van der Molen, J., Aldridge, J. N., Coughlan, C., Parker, E. R., Stephens, D., and Ruardij, P.: Modelling marine ecosystem response to climate change and trawling in the North Sea, *Biogeochemistry*, 113, 1–24, doi:10.1007/s10533-012-9763-7, 2013.
- 605 Van der Molen, J., Smith, H. C. M., Lepper, P., Limpenney, S., and Rees, J.: Predicting the large-scale consequences of offshore wind turbine array development on a North Sea ecosystem, *Cont. Shelf Res.*, 85, 60–72, doi:10.1016/j.csr.2014.05.018, 2014.
- van Leeuwen, S. M., van der Molen, J., Ruardij, P., Fernand, L., and Jickells, T.: Modelling the contribution of Deep Chlorophyll Maxima to annual primary production in the North Sea, *Biogeochemistry*, 113, 137–152, doi:10.1007/s10533-012-9704-5, 2013.
- 610 van Leeuwen, S. M., Tett, P., Mills, D. K., and van der Molen, J.: Stratified and non-stratified areas in the North Sea: long-term variability and biological and policy implications, *J. Geophys. Res. : Oceans*, 120, 7, 4670–4686, doi:10.1007/s10533-012-9704-5, 2015.
- 615 Vichi, M., May, W., and Navarra, A.: Response of a complex ecosystem model of the northern Adriatic Sea to a regional climate change scenario, *Climate Research*, 24, 141–158, doi:10.3354/cr024141, 2003.
- Vichi, M., Ruardij, P., and Baretta, J. W.: Link or sink: a modelling interpretation of the open Baltic biogeochemistry, *Biogeosciences*, 1, 79–100, doi:10.5194/bg-1-79-2004, 2004.
- Vichi, M., Pinardi, N., and Masina, S.: A generalized model of pelagic biogeochemistry for the global ocean ecosystem. Part I: Theory, *J. Mar. Sys.*, 64, 89–109, doi:10.1016/j.jmarsys.2006.03.006, 2007.
- 620 Wicks, L., and Roberts, J. M.: Benthic invertebrates in a high-CO₂ world, *Oceanography and Marine Biology: An Annual Review*, 50, 127–188, doi:10.1201/b12157-4, 2012.