

Interactive comment on “High resolution wetland mapping in West Siberian taiga zone for methane emission inventory” by I. E. Terentieva et al.

I. E. Terentieva et al.

kleptsova@gmail.com

Received and published: 31 March 2016

Dear Editor and Referees, for some reason Fig. 1 from the "Reply" has bad quality. Here we attached the same figure with higher resolution. Sorry for inconvenience!

Description: Fig. 1. Wetland ecosystem mapping using high-resolution images: a) Landsat image (4-5-3 bands) with 30 m resolution, b) ridge-hollow complex (RHC) at Landsat image, c) wetland ecosystems in RHC mapped by 1-3 m resolution images for the same territory (red – ridges, 37% of the area; blue – oligotrophic hollows, 63% of the area)

Interactive comment on Biogeosciences Discuss., 12, 20149, 2015.

C10380

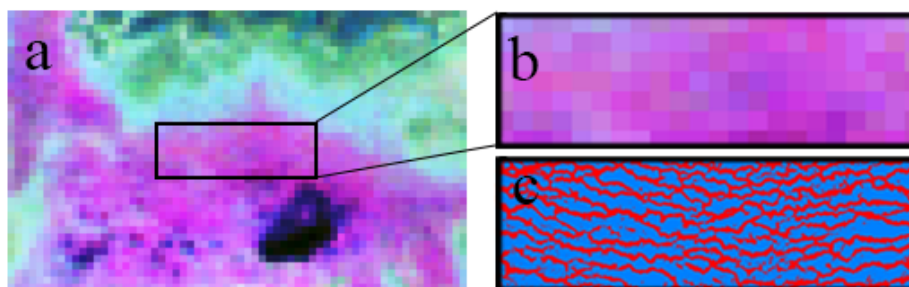


Fig. 1.

C10381