

Responses to comments from referee #1 on the paper "Reconstruction of super-resolution fields of ocean pCO₂ and air-sea fluxes of CO₂ from satellite imagery in the Southeastern Atlantic", by I. Hernández-Carrasco et al.

We thank Dr L. Gregor for his positive and constructive review. The original comments are shown in italics, and our response in normal typeface

Please note that we added two co-authors, with their approval, in our publication to be in agreement with the SOCAT atlas rules when using SOCAT in situ data. The two authors are: M. Gonzalez-Davila and J. M. Santana-Casiano from the Instituto de Oceanografía y Cambio Global, Universidad de Las Palmas de Gran Canaria, 35017, Las Palmas de Gran Canaria, Spain.

GENERAL OVERVIEW

Reviewer:

The manuscript uses a combination of remotely sensed low-res air-sea CO₂ flux and high-res Chl-a and SST to arrive at high-res air-sea CO₂ fluxes. The authors present a method new to this application and the publication fits within the scope of BGD. The manuscript is well written and is relatively error-free with a few inconsistencies in abbreviations. The methodology presented to arrive at a high-resolution air-sea CO₂ flux result is comprehensive, but tricky to follow if the reader is not familiar with the jargon. The authors should be aware of this and simplify wording as much as possible. There is no discussion this paper, but given the methodological nature of this study I do not think this is a critical omission. I enjoyed reviewing This manuscript and I think this approach has great potential for high temporal and spatial resolution CO₂ surface data with some refinement.

Authors:

We appreciate your interest in and support for our work. We have modified the manuscript according to the suggestions and criticisms you have formulated making the manuscript clearer. In particular we have improved the description of the methodology incorporating a scheme of the algorithm so that the reading becomes easier for scientists not familiar with the method.

SCIENTIFIC REMARKS

Title

Reviewer:

The title does capture the topic that the paper discusses; however, I do feel that fields of does not contribute to the reader's understanding of the topic.

Authors:

We have removed "fields of" in order to make clearer the topic of the paper. The title is now: "Reconstruction of super-resolution ocean pCO₂ and air-sea fluxes of CO₂ from satellite imagery in the Southeastern Atlantic".

Introduction

Reviewer:

The introduction introduces the topic well and do reference the appropriate work in most part. However, I feel that the authors should mention statistical learning methods in their introduction. While the approach is quite different it is also a data based approach to derive pCO₂. Some noteworthy mentions are Landschutzer et al. (2014) and Telszewski et al., (2009). Though none of these methods have focused specifically on coastal regions.

Authors :

We have quoted in the introduction (Page 2, lines 77-81) the works by Landschutzer et al, 2014 and Telszewski et al, 2009 on the empirical relationships between ocean variables by using neural networks to estimate maps of pCO₂.

Data**Reviewer:**

It is good that the authors use and compare the different datasets.

Authors :

We thank the reviewer for this positive comment.

Methods**Reviewer:**

I like the approach used in this study; however, it is fairly involved and may be confusing for some readers. It is noted that the authors do provide an overview of the methods on page 1415 L21, but it would be useful to have simple overview of the methodology such as that shown below.

1. CarbonTracker provides surface CO₂ fluxes
2. Flux is used to calculate pCO₂^{sea} at low resolution (pCO₂^{sea(LR)})
3. Use satellite SST, SSS and CCMP for winds
4. $F = K(pCO_2^{air} - pCO_2^{sea}) \implies pCO_2^{sea} = pCO_2^{air} - F/K$
5. Use MMF to extract the dimensionless singularity exponents of SST, Chla, CO₂^{LR} CO₂^{HR} from ROMS-BIOEBUS (various resolutions) output
6. Calculate the linear relationship between SST, Chl-a, CO₂^{LR} and CO₂^{HR} singularity exponents from ROMS-BIOBUS
7. Find singularity exponents of satellite SST, Chl-a and CO₂^{LR}
8. Use coefficients from ROMS-BIOEBUS (step 4) and apply to the singularities from the satellite data (step 5) to infer the singularity exponent CO₂^{HR}
9. Reconstruct pCO₂^{HR} from the cross-scale inference of pCO₂^{LR}
10. Calculate air-sea CO₂ fluxes from pCO₂^{HR} temperature and wind.

Authors :

According with the reviewer suggestion, we have included the following scheme of the algorithm, step by step, at the end of Sect. 3 in order to clarify the methodology used in this study.

i) After selecting a given area of study, compute the singularity exponents of SST, Chl and pCO_2 at low and high resolution from ROMS-BIOEBUS outputs. This is done once and then they can be used for every computation performed over the same area.

ii) Using Eq. 2 estimate ocean pCO_2 at low resolution : $pCO_2^{sea} = pCO_2^{air} - F/\alpha K$, where :

- F is the surface CO_2 fluxes provided by CarbonTracker product.
- K is the gas transfer velocity obtained by the parametrization developed by Sweeney et al, 2007, as a function of wind.
- α is the gas solubility derived according to Weiss 1974.
- pCO_2^{air} is provided by Globalview-CO2 product.

iii) Obtain the regression coefficients a, b, c and d of Eq. 3 for the singularity exponents obtained in step i).

iv) Calculate the singularity exponents of available satellite SST, Chl at high resolution and pCO_2^{sea} at low resolution (step ii).

v) Use coefficients obtained in step iii) and apply Eq. 3 to the singularity exponents from satellite data (step iv) to estimate a proxy of singularity exponents of high resolution ocean pCO_2 , $S(pCO_2)$.

vi) Using Eq. 4 reconstruct pCO_2 at high resolution from the multiresolution analysis computed on signal $S(pCO_2)$ and cross-scale inference on pCO_2 at low resolution.

vii) Use Eq. 2 to calculate air-sea CO_2 fluxes from the inferred high-resolution pCO_2 obtained in step vi).

Reviewer:

I like the use of model data (ROMS-BIOEBUS) to estimate the MLR coefficients and estimating the accuracy of the method. This does make the assumption that dynamics of SST, Chl-a and pCO_2 in the model and satellite data operate on the same scale. The authors do allude to this and justify the adequacy of ROMS-BIOEBUS. It would be good if this inference were stated a bit more explicitly. Perhaps a figure showing the PDFs of the ROMS-BIOEBUS data would address this concern?

Authors:

The use of ROMS-BIOEBUS outputs to obtain the regression coefficients does not make the assumption that dynamics of physical and biogeochemical variables of the model and satellite data operate at the same scale. However the singularity exponents (dimensionless values) of these variables (pCO_2 , SST, Chl) do present a functional relationship between them, whether we look at model outputs or satellite data. The ROMS-BIOEBUS capability to represent SST, SSS and density fields in the Benguela has been evaluated comparing the outputs of the model with annual and seasonal CARS climatologies (see Gutknecht et al., 2013 for more details).

Reviewer:

The authors mention an error of $2.4 \mu atm$ when the method is applied to ROMS data. A relative error of 0.6% is given - relative to the pCO_2 range? This is a small error relative to the range of pCO_2 . What is this average difference/error between the ROMS high-res and the ROMS low-res data? An error relative to the (high-res/low-res) may be more telling.

Authors:

We have recomputed the mean absolute error over the 10 years climatology for the dual ROMS simulations and found $3.02 \mu\text{atm}$ and a relative error of 0.89%. These values are slightly higher than those mentioned in the original manuscript since we had only considered the last year of simulations. We have included these new results in the corrected manuscript (lines 582, 583).

As suggested by the reviewer, we have computed the absolute and relative errors between High-Resolution/Low-resolution ROMS to compare with the result obtained by our method. First, we resize the low resolution to the high resolution grid without any interpolation (1 pixel of low resolution is resized in 4×4 pixels of the new grid). After this, we compute absolute error = $\text{ABS}(\text{ROMS}_{\text{hr}} - \text{ROMS}_{\text{lr}} \text{ resized})$ and the relative error = absolute error / $\text{ABS}(\text{ROMS}_{\text{hr}})$ in each pixel, and finally we compute the mean of absolute and relative error for all pixels of the 360 images corresponding to the ROMS outputs.

In doing so, we obtain for the absolute error $12.1 \mu\text{atm}$ and for the relative one 3.6%. In conclusion, our method allows to decrease the relative error from 3.6 to 0.89% when going from ROMS low resolution to reconstructed ROMS high resolution.

Reviewer:

The authors also mention a paper by in review Sudre et al. (2015) on several occasions. I do not feel that this will be a problem once this paper has been published; otherwise I do not feel the authors should cite this work.

Authors:

The paper by Sudre et al. (2015) was with minor revision and the present status on line in the journal is “with Editorial decision”, so we think we can leave it and quote this work.

Results**Reviewer:**

The use of mean error (ME) here is unusual. For their purpose of use, the use of ME seems OK, but it is essentially the difference of the means of the two datasets (the inference bias). Given its similarity in nomenclature to Mean Squared Error (MSE analogous to AE), I think that the authors should consider a different name for this error. This is especially true, as they do not use it for the same purpose as one would use MSE.

Authors:

To avoid misunderstanding, we have modified the nomenclature and in the new manuscript we use mean differences (MD) instead of mean error (ME) for the average of the difference point by point of the different data sources.

Reviewer:

It would be good to see ($p\text{CO}_2^{\text{insitu}}$ vs. $p\text{CO}_2^{\text{ctrack}}$) and ($p\text{CO}_2^{\text{insitu}}$ vs. $p\text{CO}_2^{\text{infer}}$) plots for more data. Points could be coloured by longitude.

Authors: As suggested by the reviewer we have plotted ($p\text{CO}_2^{\text{insitu}}$ vs. $p\text{CO}_2^{\text{ctrack}}$) and ($p\text{CO}_2^{\text{insitu}}$ vs. $p\text{CO}_2^{\text{infer}}$) using all the CarbonTracker and inferred $p\text{CO}_2$ values in the intersections with in-situ $p\text{CO}_2$ for 2006 and 2008. In Fig. 1 (not included in the manuscript) we show the case for Globcolour OC and OSTIA SST data product combinations. This figure shows that correlation is not entirely satisfactory for both $p\text{CO}_2^{\text{ctrack}}$ and $p\text{CO}_2^{\text{infer}}$, even if there are more points of $p\text{CO}_2^{\text{insitu}} - p\text{CO}_2^{\text{infer}}$ closer to the diagonal straight line (in black), for instance the cloud of points around $360\text{--}370 \mu\text{atm}$. Fig. 2 shows the same as plotted in Fig. 1 but points colored as a function of longitude.

For longitudes greater than 10 degrees East (closer to the coast) $p\text{CO}_2^{\text{ctrack}}$ and $p\text{CO}_2^{\text{infer}}$ values are overestimated with more points closer to the diagonal for longitudes smaller than 10 degrees (open ocean region). This can be a sign that near the coast the available input CarbonTracker data are possibly not good enough to capture the variability, whereas the more open ocean areas are better represented in this product.

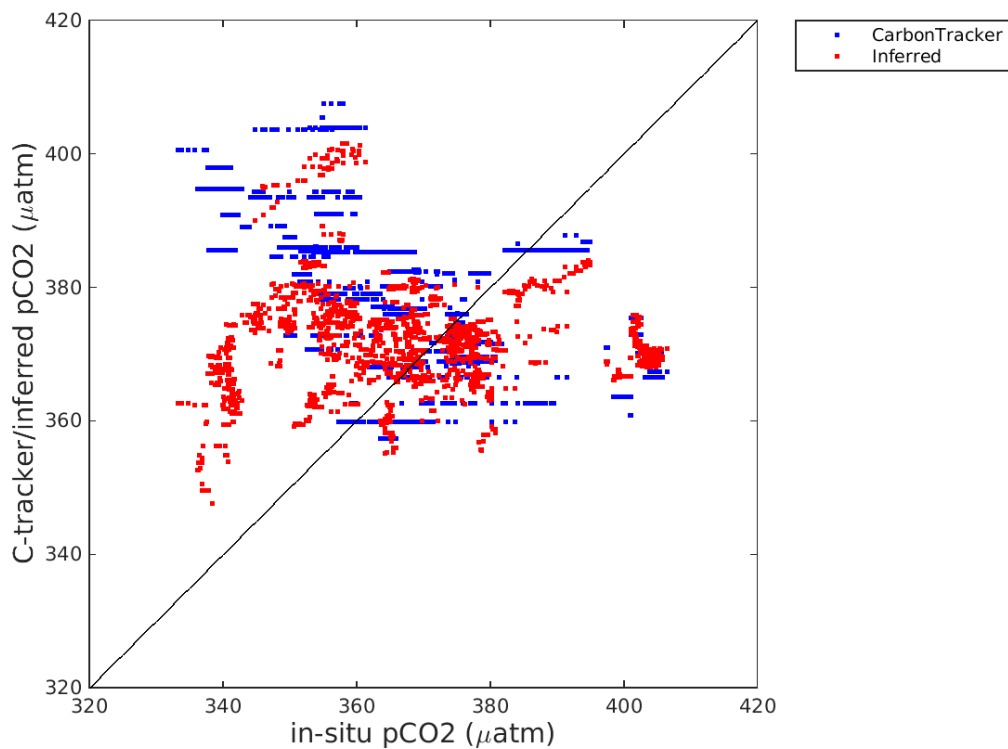


Fig 1. Scatter plot showing pCO₂ values from CarbonTracker vs in-situ (in blue) and inferred vs in-situ (in red) at the intersections.

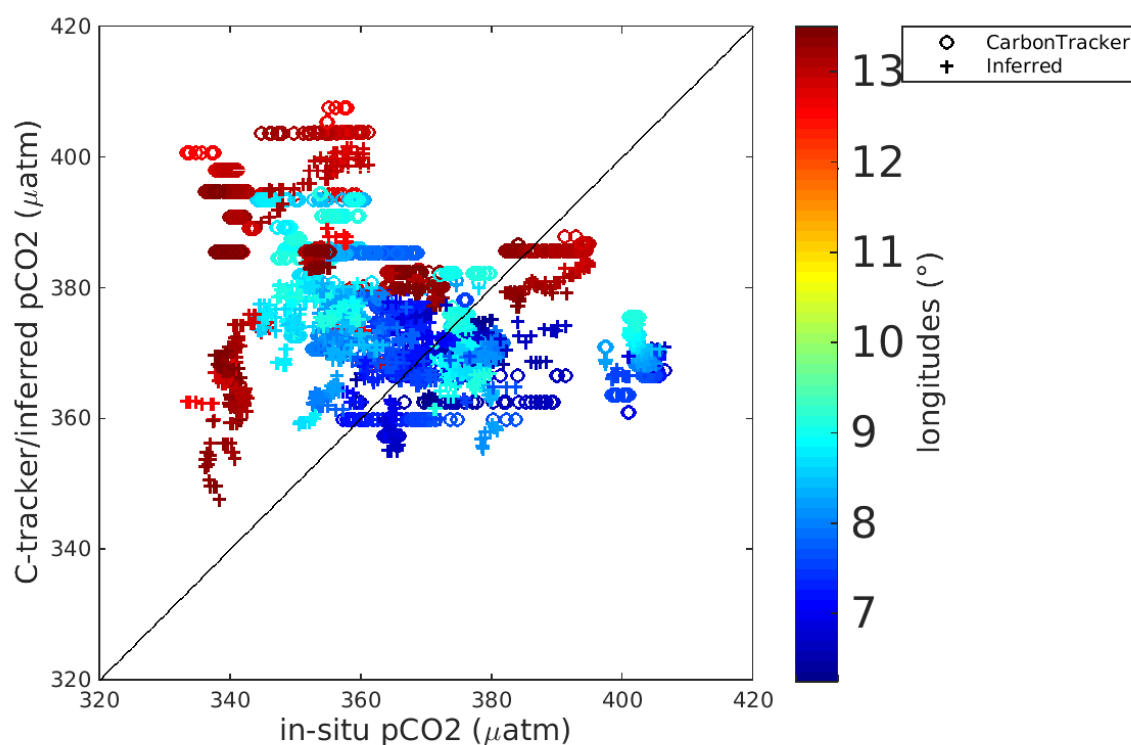


Fig 2. The same as Fig. 1 but coloured as a function of longitude.

Reviewer:

The comparison of in-situ, inferred and CarbonTracker data shows the potential of the method presented in this manuscript as well as the shortcomings of using Carbon-Tracker data for the estimation of air-sea CO₂ fluxes. I think that the authors should briefly state that the output will only be as good as the input.

Authors:

As suggested by the reviewer we have added the following sentence in the conclusions (Page 18 and lines 977-983): “The statistical comparison of inferred and CarbonTracker pCO₂ values with in-situ data shows the potential of our method as well as the shortcomings of using CarbonTracker data for the estimation of air-sea CO₂ fluxes. From these results it can be said that the outputs of our algorithm will only be as good as the inputs.”

Figures

Reviewer:

General comment on line figures: as a colour-blind reader, I struggle to see yellow lines on white background. It is not imperative that this changed, but would be better in a darker shade.

Authors:

We have changed the background of the figures with gray colour as suggested by the reviewer.

SPECIFIC COMMENTS

Page and line	Phrase or topic	Correction or comment
P1406 L26	<i>interacts</i>	<i>interact</i> Response: This has been corrected
P1407 L19	<i>Let's cite here the work of. . .</i>	<i>This sentence seems a little clumsy</i> Response: We have reworded the sentence and now it reads : “Among others, we can find the work by....” (Page 2, lines 63-64)
P1407 L17-L25	<i>Possible missing citations</i>	<i>The authors fail to mention statistical learning methods and associate literature (Lachkar and Gruber, 2012; Landschutzer et al., 2014; Telszewski et al 2009 and several others)</i> Response: We have added new references on statistical neural networks (Page 2, line 77-81).
P1409 L7	<i>has been proved to be innovative. . .</i>	<i>has been proven innovative . . .</i> Response: Corrected
P1409 L16	<i>relates closely the</i>	<i>relates closely the - a bit clumsy otherwise</i> Response: The sentence has been improved
P1410 L4	<i>Section 3</i>	<i>Inconsistent abbreviation</i> Response: Corrected
P1411 L12	<i>sea-state</i>	<i>Sea state should not be included here as this is part of the parameterisation wind accounts for this.</i> Response: We wrote K, the gas transfer velocity, is a function of wind, salinity, temperature, sea state, which can be obtained from satellite data. Here we meant K is a function of all these parameters in a general sense. Since bubble mediated gas transfer depends on wave breaking, whitecapping and dispersion by mixing processes in the upper ocean, its environmental dependence (on wind speed, sea state, water temperature..) is a function

<p>P1411 L24</p>	<p><i>pCO₂ -air</i></p>	<p>of the environmental dependence of these processes.</p> <p><i>Authors use Ascension Island as a reference. Would Cape Point, South Africa not be a closer reference?</i></p> <p>http://www.esrl.noaa.gov/gmd/ccgg/obspack/labinfo.html</p> <p>Response: Reviewer is right and the Ascension Island station is not the closest one. The Ascension Island station is located at 7.97°S and 14.4°W with an elevation of 54m above the sea level, closer to the equator than our area of study. Another station is located at Gobabed (23.58°S, 15.03°E) but at 456m above sea level. The station at Cape Point in South Africa is closer but at 300m above sea level. We chose to use the Ascension Island because it is closer to sea level. We have clarified this point in Page 4, line 239.</p>
<p>P1411 L26</p>	<p><i>Garbe and Vihharev (2012) approach</i></p>	<p><i>Briefly mention what their approach is reader does not know what this approach is.</i></p> <p>Response: We have replaced the sentence “For this reason, an approach similar to Garbe and Vihharev (2012) has been developed and applied to the CarbonTracker data set.” by “Garbe and Vihharev (2012) have developed an optimal control approach to invert interfacial fluxes using a simplified inverse problem of atmospheric transport. The inverse problem is solved using the Galerkin finite element method and the Dual Weighted Residual (DWR) method for goal-oriented mesh optimization. An adaptation of this approach has been applied to the CarbonTracker data set.” (lines 250-256)</p>
<p>P1412 L5</p>	<p><i>retain very well the structure of the CarbonTracker fluxes</i></p>	<p><i>retain the structure of the CarbonTracker fluxes very well</i></p> <p>Response : The sentence has been corrected</p>
<p>P1415 L21</p>	<p><i>The idea</i></p>	<p><i>Be a little more specific about which idea</i></p> <p>Response : The idea refers to the idea behind the methodology. We have clarified this in the manuscript (see line 391).</p>

P1415 L26	Partial pressure pCO ₂	Partial pressure (pCO ₂) Response : Corrected
P1416 L1	good characteristics	What are good characteristics of a linear regression in this case? Response : We have removed “with good characteristics”.
P1420 L11	relative error	Relative to total pCO ₂ . See scientific remarks section for more on this. Response : We refer reviewer to the detailed response described in the section methods of the scientific remarks.
P1424 L18	how different can be the coverage of the pCO ₂ field can be depending. . .	how different coverage of pCO ₂ can be in the field depending. . . Response : The sentence has been reworded.
P1426 L28	Abbreviations	Why not apply these from the start. They make it much easier to follow the discussion. Response : As recommended, in the new manuscript we use these abbreviations from the beginning of Sect. Results.
P1427 L24	Showing that have of the measurements is geographically in the coastal region of Benguela, outside the. . .	Showing that half of the measurements fall within the coastal region of the Benguela (land masked by CarbonTracker) Response : The sentence has been modified as suggested by the reviewer.
P1428 L8	study qualitatively	qualitatively study Response : Corrected : quantitatively study
P1440 Tab4	No valid intersections	Should this be number? If so add No. Response : 'No' is number. We have replaced 'No' with 'Nb' in order to avoid typing errors in the production process.
P1444 Fig3	a, b	Make colour scales the same

<i>P1446 Fig5</i>	<i>c, d, e, f</i>	<p>Response: In the new Fig. 3a and 3b we have used the same colour scale.</p> <p><i>Ensure that scales are the same for pCO₂ and FCO₂ for inter-comparison.</i></p> <p>Response: We have used the same colour scale pCO₂ plots and the same colour scale for maps of CO₂ fluxes.</p>
-------------------	-------------------	---

Reconstruction of super-resolution ocean pCO₂ and air-sea fluxes of CO₂ from satellite imagery in the Southeastern Atlantic

I. Hernández-Carrasco¹, J. Sudre¹, V. Garçon¹, H. Yahia², C. Garbe³, A. Paulmier¹, B. Dewitte¹, S. Illig¹, I. Dadou¹, M. González-Dávila⁴, and J. M. Santana-Casiano⁴

¹LEGOS, Laboratoire d'Études en Géophysique et Océanographie Spatiales (CNES-CNRS-IRD-UPS), 31401 Toulouse, France

²INRIA, Institut National de Recherche en Informatique et en Automatique, Bordeaux, France

³IWR, Interdisciplinary Center for Scientific Computing, University of Heidelberg, Heidelberg, Germany

⁴Instituto de Oceanografía y Cambio Global, Universidad de Las Palmas de Gran Canaria, 35017, Las Palmas de Gran Canaria, Spain

Correspondence to: I. Hernández-Carrasco
(ismael.hernandez@legos.obs-mip.fr)

Abstract. An accurate quantification of the role of the ocean as source/sink of Green House Gases (GHGs) requires to access the high-resolution of the GHG air-sea flux at the interface. In this paper we present a novel method to reconstruct maps of surface ocean partial pressure of CO₂, pCO₂, and air-sea CO₂ fluxes at super resolution (4 km) using Sea Surface Temperature (SST) and Ocean Colour (OC) data at this resolution, and CarbonTracker CO₂ fluxes data at low resolution (110 km). Inference of super-resolution of pCO₂, and air-sea CO₂ fluxes is performed using novel nonlinear signal processing methodologies that prove efficient in the context of oceanography. The theoretical background comes from the Microcanonical Multifractal Formalism which unlocks the geometrical determination of cascading properties of physical intensive variables. As a consequence, a multiresolution analysis performed on the signal of the so-called singularity exponents allows the correct and near optimal cross-scale inference of GHGs fluxes, as the inference suits the geometric realization of the cascade. We apply such a methodology to the study offshore of the Benguela area. The inferred representation of oceanic partial pressure of CO₂ improves and enhances the description provided by CarbonTracker, capturing the small scale variability. We examine different combinations of Ocean Colour and Sea Surface Temperature products in order to increase the number of valid points and the quality of the inferred pCO₂ field. The methodology is validated using in-situ measurements by means of statistical errors. We obtain that mean absolute and relative errors in the inferred values of pCO₂ with respect to in-situ measurements

are smaller than for CarbonTracker.

1 Introduction

The ocean can be thought of as a complex system in which a large number of different processes (e.g. physical, chemical, biological, atmosphere-ocean interactions) interact with each other at different spatial and temporal scales (Rind, 1999). These scales extend from millimeters to thousands of kilometers and from seconds to centuries (Dickey, 2003). In particular, recently there is a growing body of evidence that the upper few hundred meters of the oceans are dominated by submesoscale activity, covering the range 1-10 km, and that this activity is important to understand global ocean properties (Klein and Lapeyre, 2009). Accurately estimating the sources and sinks of GHGs at the air-sea interface requires to resolve these small scales (Mahadevan et al., 2004). However, the scarcity of oceanographic cruises and the lack of available satellite products for GHG concentrations at high resolution prevent us from obtaining a global assessment of their spatial variability at small scales. For example, from the in-situ ocean measurements the uncertainty of the net global ocean-atmosphere CO₂ fluxes is between 20 and 30% (IOCCP, 2007), and could be higher in the Oxygen Minimum Zones (OMZ) of the Eastern Boundary Upwelling Systems (EBUS) due to the extreme regional variability in these areas (Paulmier et al., 2008; Franco et al., 2014). This indeed suggests the design of proper methodologies to infer the fluxes

at high resolution from presently available satellite images data, in order to improve current estimates of gas exchanges between the ocean and the atmosphere.

60 The most commonly used methods to estimate air-sea CO₂ 115
fluxes are based either on statistical methods, inverse modeling with atmospheric transport models or global coupled physical-biogeochemical models. Among others we can find the work by Takahashi et al. (2002, 2009) where they inter-
65 polate sea surface pCO₂ measurements with advanced statistical methods to provide climatological monthly maps of air-sea fluxes of CO₂ in the global surface waters at a spatial resolution of 4° × 5°. Global maps at the same spatial resolution but at higher temporal resolution (daily) have been
70 estimated by Rödenbeck et al. (2014) by fitting the mixed-layer carbon budget equation to ocean pCO₂ observations. Beside the Takahashi's works an international effort to compile global surface CO₂ fugacity (fCO₂) measurements has been recently performed and reported in Pfeil et al. (2013);
75 Bakker et al. (2014), and later interpolated by Sabine et al. 130
(2013) generating a monthly gridded product with fCO₂ values in a 1°x1° grid cell. Other statistical approach based on the neural-network statistical method has been shown to be useful to estimate climatological and monthly 1°x1° maps of
80 pCO₂ by Landschützer et al. (2014) and Telszewski et al. 135
(2009) respectively. Gruber et al. (2009) used an inverse modeling of sources and sinks from the network of atmospheric CO₂ concentrations jointly with transport models. The third type of methods is based on the direct computations
85 of the air-sea CO₂ fluxes in coupled physical-biogeochemical 140
models incorporating the biogeochemical processes of the carbon dioxide system. In the latter, simulated surface ocean pCO₂ can be constrained with available ship observations as shown by Valsala and Maksyutov (2010).

90 Another new avenue to infer air-sea GHG fluxes is 145
through inverse modeling applied to vertical column densities (VCD) extracted from satellite spectrometers, i.e. Greenhouse gases Observing SATellite (GOSAT) and SCanning Imaging Absorption SpectroMeter for Atmospheric CHarographY (SCIAMACHY), at low spatial resolution (Garbe 150
95 and Vihhrev, 2012). A global estimation of CO₂ fluxes in the ocean has been derived at 1° × 1° of spatial resolution from global atmosphere observations used into a data assimilation system for CO₂ called CarbonTracker (Peters et al., 2007). In
100 all these datasets the rather coarse spatial resolution leads to 155
uncertainties in the actual estimate of the sources and sinks of CO₂, calling for an improvement of the resolution of CO₂ flux estimates.

105 In this regard, the last few years have seen the appearance of interesting new developments on multiscale processing techniques for complex signals coming from Earth Observations (Yahia et al., 2010). These methods make use of phenomenological descriptions of Fully Developed Turbulence (FDT) in nonlinear physics, motivated by the values
110 taken on by Reynolds number in ocean dynamics. As predicted from the theory and also observed in the ocean, in

a turbulent flow the coherent vortices (eddies) interact with each other stretching and folding the flow generating smaller eddies or small scale filaments and transition fronts characterized by strong tracer gradients (Frisch, 1995). This results in a cascade of energy from large to smaller scales. Therefore the inherent cascade of tracer variance under the turbulent flow dominates the variability of the geometrical distribution of tracers such as temperature or dissolved inorganic carbon, as shown by Abraham et al. (2000), Abraham and Bowen (2002), Turiel et al. (2005). Geometrical organization of the flow linked to the energy cascade allows to study its properties from the geometrical properties of any tracer for which the advection is the dominant process. The relationships between the cascade and the multifractal organization of FDT has been set up either in a canonical (Arneodo et al., 1995; Frisch, 1995) or microcanonical (Turiel et al., 2005; Bouchet and Venaille, 2012) descriptions. Within the microcanonical framework (MMF) the singularity exponents unlock the geometrical realization of the multifractal hierarchy. Setting up a multiresolution analysis on the singularity exponents computed in the microcanonical framework allows near optimal cross scale inference of physical variables (Sudre et al., 2015).

These advances open a wide field of theoretical and experimental research and their use in the analysis of complex data coming from satellite imagery has been proven innovative and efficient, showing a particular ability to perform fusion of satellite data acquired at different spatial resolutions (Pottier et al., 2008) or to reconstruct from satellite data currents maps at submesoscale resolution (Sudre et al., 2015). In this paper we apply these novel techniques emerging from nonlinear physics and nonlinear signal processing for inferring submesoscale resolution maps of the air-sea CO₂ fluxes and associated sinks and sources from available remotely sensed data. We use this methodology to derive cross scale inference according to the effective cascade description of an intensive variable, through a fusion process between appropriate physical variables which account for the fluxes exchanges between the ocean and the atmosphere. This approach is not only very novel in signal processing, but also connects the statistical description of acquired data with their physical content. This makes the approach useful to reconstruct all GHGs.

Unlike the Lagrangian approach to reconstruct tracer maps at high resolution (Berti and Lapeyre, 2014), our methodology works in the Eulerian framework and we do not need to know the trajectories of oceanic tracer particles but only high resolution instantaneous maps of tracers which can be directly obtained from remote sensing.

The Eastern Boundary Upwelling Systems (EBUS) and Oxygen Minimum Zones (OMZs) are likely to contribute significantly to the gas exchange between the ocean and the atmosphere (Hales et al., 2005; Waldron et al., 2009; Paulmier et al., 2011). The Benguela upwelling system, the region of interest in this study, is one of the highest produc-

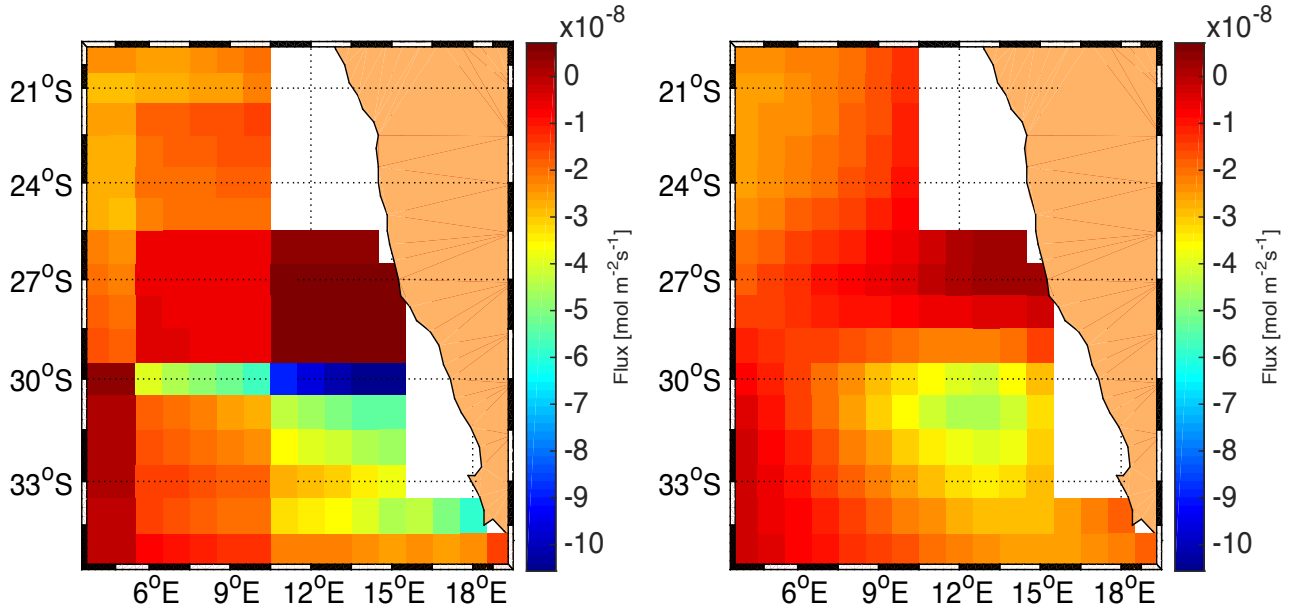


Fig. 1. Estimated fluxes from CarbonTracker data. Shown are the results on the Benguela upwelling system on March 23, 2006. Left are the CarbonTracker fluxes, right are our results.

tivity areas in the world ocean and may contribute significantly to the global air-sea CO₂ flux. More precisely, some studies using data from in-situ samples have found the region of Benguela to be an annual sink of CO₂ with -1.70 (in 1995 and 1996) and -2.02Mt C/year in 2005 (Santana-Casiano et al., 2009; Monteiro, 2010), with a strong variability between 2005 and 2006 from -1.17 to -3.24 mol C/m² per year, respectively (González-Dávila et al., 2009).

The paper is organized as follows: Sect. 2 describes the datasets used as input in our algorithm. Sect. 3 is devoted to describe the methodology used through the study. Statistical description of the input datasets is presented in Sect. 4. Results of the inference method are given in Sect. 5 by providing outputs of our algorithm, then evaluating the various satellite products and assessing the performance of the method using in situ measurements.

2 Data

The input data combines air-sea CO₂ fluxes at low resolution and satellite ocean data at high resolution. To validate the method we use in-situ measurements of oceanic pCO₂.

2.1 Input data: Air-sea CO₂ fluxes at low resolution

It is known that the evolution of a concentration, c , in the atmosphere is given by the advection-reaction-diffusion equation:

$$\frac{\partial c}{\partial t} = -u\nabla c + \frac{1}{\rho}\nabla(\rho T_d \nabla c) + \frac{1}{\rho}g + F, \quad (1)$$

with the wind field u , the density of the air ρ , the turbulent diffusivity tensor T_d , the chemical reaction rate g and the net flux at the air-sea interface F (Garbe et al., 2007, 2014). Using optimal control and inverse problem modeling, a map of F can be derived using Earth Observation data (Garbe and Vihhrev, 2012). It would be ideal if we could use data of atmospheric CO₂ concentrations from space measured by satellite sensors such as SCIAMACHY (SCanning Imaging Absorption SpectroMeter for Atmospheric CHartography) aboard ENVISAT (Environmental Satellite), in orbit since 2002, and GOSAT (Greenhouse gases Observing SATellite), in orbit since January 2009, to derive the air-sea flux. However SCIAMACHY and GOSAT sampling is not dense enough with very sub-optimal sampling of the Benguela upwelling system. This led us to use data of CO₂ fluxes from CarbonTracker (<http://www.esrl.noaa.gov/gmd/ccgg/carbontracker/>) at spatial resolution of 1° x 1° (~100 km x ~100 km) (Peters et al., 2007). CarbonTracker system assimilates and integrates a diversity of atmospheric CO₂ data into a computation of surface CO₂ fluxes, using a state-of-the-art atmospheric transport model and an ensemble Kalman filter.

We obtain the partial pressure of ocean CO₂ by using the equation of the net flux in the air-sea interface:

$$F = \alpha K (p_{CO_2}^{air} - p_{CO_2}^{ocean}), \quad (2)$$

where α is the gas solubility, which depends on SST and Sea Surface Salinity SSS, and K , the gas transfer velocity, is a function of wind, salinity, temperature, sea state, which can be obtained from satellite data. To estimate the gas transfer velocity we use the well accepted relationships for the transfer velocity in air-sea gas exchange from wind speed, the parametrization developed by Sweeney et al. (2007). The CO₂ gas solubility is derived according to Weiss (1974). Input data for SST are derived from OSTIA (Operational SST and Sea Ice Analysis system) product, SSS are derived from LEGOS (Laboratoire d'Etudes en Géophysique et Océanographie Spatiales) product compiled by Delcroix et al. (2011) and winds from Cross Calibrated Multi-Platform Ocean surface winds from JPL (Jet Propulsion Laboratory) PO.DAAC (Physical Oceanography Distributed Active Archive Center, <http://podaac.jpl.nasa.gov/>). We assume a $p_{CO_2}^{air}$ to be constant in the domain of study and it is derived from the Globalview-CO2 product of the Cooperative Atmospheric Data Integration Project coordinated by Carbon Cycle Greenhouse Gases Group (GLOBALVIEW, 2013) (www.esrl.noaa.gov/gmd/ccgg/globalview/). We use values taken at the closest station off Benguela and closest to sea level, located at Ascension Island (7.97°S and 14.40°W) as our reference atmospheric CO₂.

The raw data of CarbonTracker fluxes of CO₂ in the area of interest are strongly binned and exhibit strong gradients across those bins. This turns out to be suboptimal for our super-resolution approach. Garbe and Vihharev (2012) have developed an optimal control approach to invert interfacial fluxes using a simplified inverse problem of atmospheric transport. The inverse problem is solved using the Galerkin finite element method and the Dual Weighted Residual (DWR) method for goal-oriented mesh optimization. An adaptation of this approach has been applied to the CarbonTracker data set. However, the estimations are expensive and computing results for all the time frames of interest was infeasible. Therefore, an anisotropic diffusion-based approach has been applied to the raw fluxes of the CarbonTracker data set. The diffusion is steered by the direction of the low-altitude wind field. The results thus retain the structure of the CarbonTracker fluxes very well while suppressing artifacts. Results are comparable to the physically more accurate approach of Garbe and Vihharev (2012). Examples of this process are shown in Fig. 1.

2.2 Input data: Satellite Ocean data at high resolution

Oceanic pCO₂ is a complex signal depending, at any spatial resolution, on sea surface temperature, salinity, chlorophyll concentration, dissolved inorganic carbon, alkalinity and nutrients concentrations. Both the biological pump, with chlorophyll a as a proxy, and the physical pump, driven by

the temperature and salinity (e.g. solubility, water mass), govern the evolution of pCO₂, when dealing with CO₂ for instance, in the surface ocean.

We use here the high resolution satellite ocean data for chlorophyll a, as a proxy for the biological carbon pump and for Sea Surface Temperature (SST), as a proxy for the thermodynamical pump, (see Section 3.2 for more details on the connection of these oceanic variables).

2.2.1 Chlorophyll-a (Chl-a) from Ocean Colour (OC)

In this study we use Chl-a concentrations from two different Ocean Colour products: MERIS and GLOBCOLOUR. MERIS (MEdium Resolution Imaging Spectrometer Instrument) is on board the ENVISAT satellite and provides daily maps of ocean colour at 1/24° (~4 km). Ocean colour from GLOBCOLOUR product is obtained by merging data provided by MODIS (MODerate Resolution Imaging Spectroradiometer), MERIS and SeaWiFS instruments. The Chl-a concentration is provided daily and at the spatial resolution equal to 1/24° (~4 km). Ocean Colour data have been regridded at 1/32° by linear interpolation. GLOBCOLOUR products are generated using different merging methods (see the GLOBCOLOUR Product User Guide document in http://www.globcolour.info/CDR_Docs/GlobCOLOUR_PUG.pdf):

- **Averaging from single-instrument chl-a concentration.** In this case CHL1 daily level 3 (L3) products are generated for each instrument using the corresponding L2 data. At the beginning of the averaging process, an inter-calibration correction is applied to the MODIS and SeaWiFS (Sea-Viewing Wide Field-of-View Sensor) CHL1 daily L3 products in order to get compatible concentrations with respect to the MERIS sensor. The merged CHL1 concentration is then computed as the average of the MERIS, MODIS and SeaWiFS quantities, both as: an **arithmetic mean** or a **weighted average value (AVW)**. In the AVW method, values of CHL1 are weighted by the relative error for each sensor on the results of the simple averaging.
- **Garver-Siegel-Maritorea model (GSM).** In this method single-instrument daily L3 fully normalized water leaving radiances (individually computed for each band) and their associated error bars are used by the GSM model. These radiances are not inter-calibrated before incorporation in the model (see Maritorea and Siegel (2005) for more details).

Snapshots of both Chl-a fields derived from MERIS and GSM GLOBCOLOUR corresponding to September 21, 2006 are displayed in Fig. 2 a) and b), respectively. This example shows the clear difference in the remote sensing coverage between the two products. The merged GLOBCOLOUR product yields a more covered Chl field than the one obtained

from MERIS. The merging algorithm in GLOBCOLOUR product tends to decrease the missing points induced by clouds for each individual instrument.

2.2.2 Sea Surface Temperature (SST)

We use SST derived from OSTIA and MODIS products. OSTIA (Operational SST and Sea Ice Analysis system) is a new analysis of SST that uses satellite data provided by the GHRSSST (Group for High Resolution SST) project, together with in situ observations to determine the SST with a global coverage and without missing data. The datasets are produced daily and at spatial resolution of 1/20° (~6km) performing a multi-scale optimal interpolation using correlation length scales from 10 km to 100 km (more details in Donlon et al. (2012)). The other SST product used in this study is derived from MODIS (MODerate Resolution Imaging Spectroradiometer) sensors carried on board the Aqua satellite since December 2002. This SST product is derived from the MODIS mid-infrared (IR) and thermal IR channels and is available in various spatial and temporal resolutions. We use Level-3 daily maps of SST at the spatial resolution of 1/24° (~4 km) (Savtchenko et al., 2004). In Fig. 3 a) and b), we show one snapshot of SST from OSTIA and MODIS respectively corresponding to the same day on September 21, 2006. In the case of OSTIA products, the SST field is fully covered of points while for MODIS products there are gaps due to cloudiness. On other hand, MODIS product offers a more detailed visualization of the small structures. All SST data have been regridded at 1/32° by bilinear interpolation.

2.3 Validation data: in-situ measurements

Among the available data in SOCAT version 2 (Bakker et al., 2014) (Surface Ocean CO₂ Atlas, <http://www.socat.info>) over the 2000-2010 period in our region of interest we find the following cruises with pCO₂ measurements:

- **2000**, one cruise: *ANT-18-1*
- **2004**, one cruise: *0404SFC-PRT*
- **2005**, five cruises: *QUIMA2005-0804*, *QUIMA2005-0821*, *QUIMA2005-0922*, *QUIMA2005-1202*, *QUIMA2005-1220*
- **2006**, nine cruises: *GALATHEA*, *QUIMA2006-0326*, *QUIMA2006-0426*, *QUIMA2006-0514*, *QUIMA2006-0803*, *QUIMA2006-0821*, *QUIMA2006-0921*, *QUIMA2006-1013*, *QUIMA2006-1124*
- **2008**, seven VOS cruises: *QUIMA2008-1*, *QUIMA2008-2*, *QUIMA2008-3*, *QUIMA2008-4*, *QUIMA2008-5*, *QUIMA2008-6*, *QUIMA2008-7*
- **2010**, one cruise: *ANT27-1*

The small number of cruises found in one decade (24 cruises) shows that the scarcity of cruises in the Benguela region is a fact. This indeed demonstrates the crucial need of developing a robust method to infer high resolution pCO₂ from space. Moreover for some of these cruises, for instance, the track of GALATHEA cruise is too close to the coast and is out of the original CarbonTracker domain. Due to this restriction we only document the offshore conditions of this upwelling system. Owing to the relatively large number of cruises during 2005, 2006 and 2008 (a total of 20 cruises, representing 83% of all available cruise data from 2000 through 2010), in this validation, we focus the analysis on the set of QUIMA-cruises during 2005 (QUIMA2005), 2006 (QUIMA2006) and 2008 (QUIMA2008) and we present the global analysis using all available cruises during these three years. Santana-Casiano et al. (2009) analyzed this data to study the sea surface pCO₂, fCO₂ and CO₂ air-sea fluxes offshore of the Benguela upwelling system between 2005 and 2006 (for each month from July 2005 up to November 2006) and González-Dávila et al. (2009) extended the study including cruises data from 2007 to 2008. The QUIMA line crosses the region between 5°S and 35°S, with all the cruises following the same track.

3 Method

The idea behind the methodology hinges on the fundamental discovery of a simple functional dependency between the transitions - those being measured by the dimensionless values of the singularity exponents computed within the framework of the Microcanonical Multifractal Formalism - of the respective physical variables under study : SST, Ocean Colour and oceanic partial pressure (pCO₂). That functional dependency being adequately fitted into a linear regression model, it becomes possible to compute, at any given time, a precise evaluation of pCO₂ singularity exponents using SST, Ocean Colour and low resolution acquired pCO₂. Once these singularity exponents are computed, they generate a multi-resolution analysis from which low resolution pCO₂ can be cross-scale inferred to generate a high resolution pCO₂ product.

3.1 Singularity exponents and the multifractal hierarchy of turbulence

In the ocean, the turbulence causes the formation of unsteady eddies on many scales which interact with each other (Frisch, 1995). Most of the kinetic energy of the turbulent motion is contained in the large scale structures. The energy cascades from the large scale structures to smaller scale structures by an inertial and essentially inviscid mechanism. This process continues, creating smaller and smaller structures which produces a hierarchy of eddies. Moreover, the ocean is a system displaying scale invariant behavior, that is, the correlations of

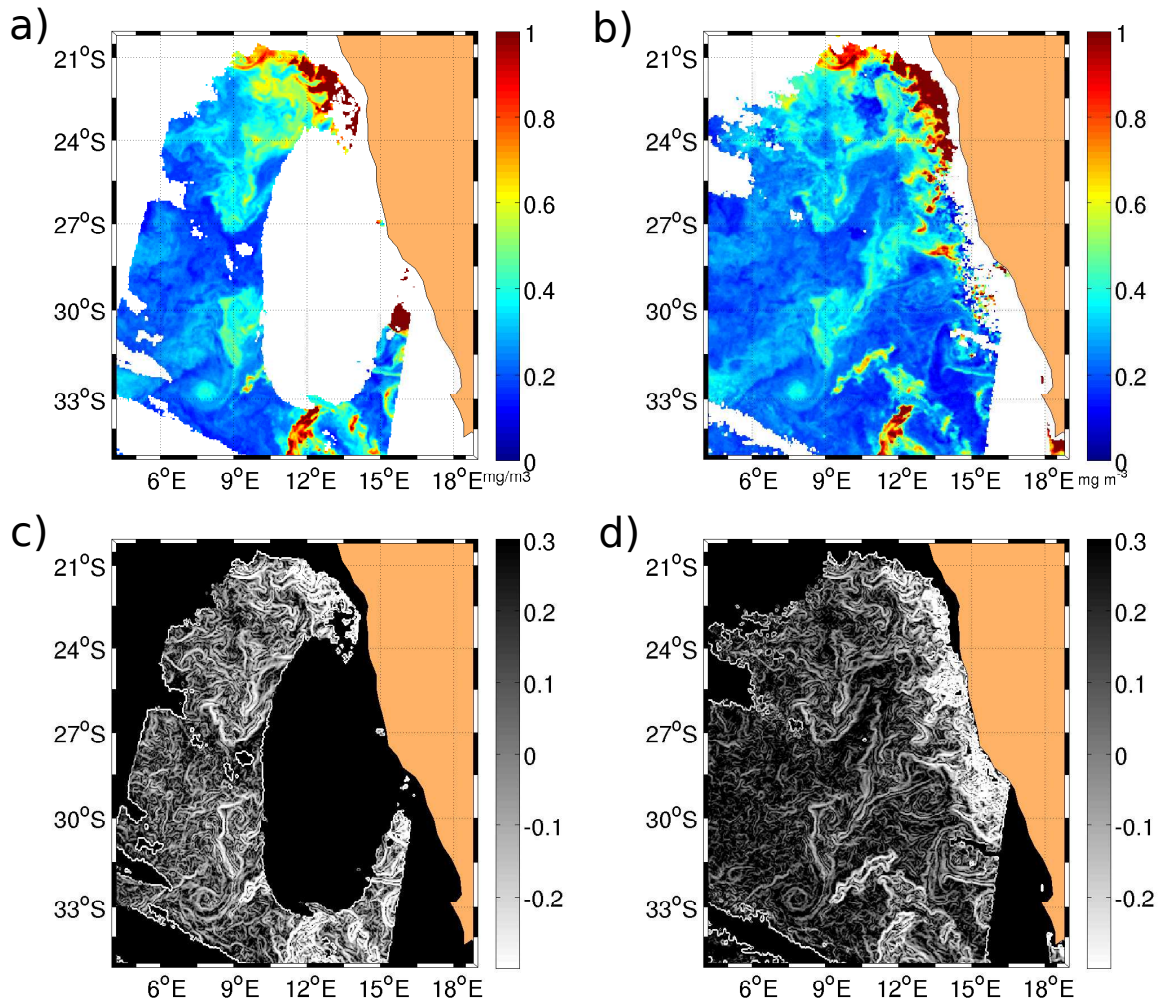


Fig. 2. Snapshot of Chl-a fields corresponding to September 21, 2006, regridded at $1/32^\circ$ of spatial resolution from MERIS (a) and GSM GLOBCOLOUR (b). c) and d) are the spatial distribution of Singularity Exponents of the Chl-a plotted in a) and b) respectively

variables do not change when we zoom in or we zoom out the system, and can be represented by power-laws in particular, with the scaling exponents h .

It can be shown that the scaling exponents are the values taken on by localized singularity exponents, which can be computed at high precision in the acquired data using the Microcanonical Multifractal Formalism. Hence, within that framework, the multifractal hierarchy of turbulence, defined by a continuum of sets \mathcal{F}_h indexed by scaling exponents h , is obtained as the level sets of the geometrically localized singularity exponents.

We will not review here the details in the computation of the singularity exponents $h(\mathbf{x})$, leaving the reader to consult references (Turiel et al., 2005, 2008; Pont et al., 2011b; Maji and Yahia, 2014; Sudre et al., 2015) for an effective descrip-

tion of an algorithm able to compute the $h(\mathbf{x})$ at every point \mathbf{x} in a signal's domain.

Some examples of the singularity exponents of Chl and SST images for the different products described in Section 2.2 are shown in Fig. 2 c) and 2 d) and Fig. 3 c) and 3 d), respectively. As compared to the corresponding images of Chl and SST showed in Fig. 2 a) and 2 b) and Fig. 3 a) and 3 b), one can see the ability of the singularity exponents to unveil the cascade structures arisen by tracer-gradient variances hidden in satellite images.

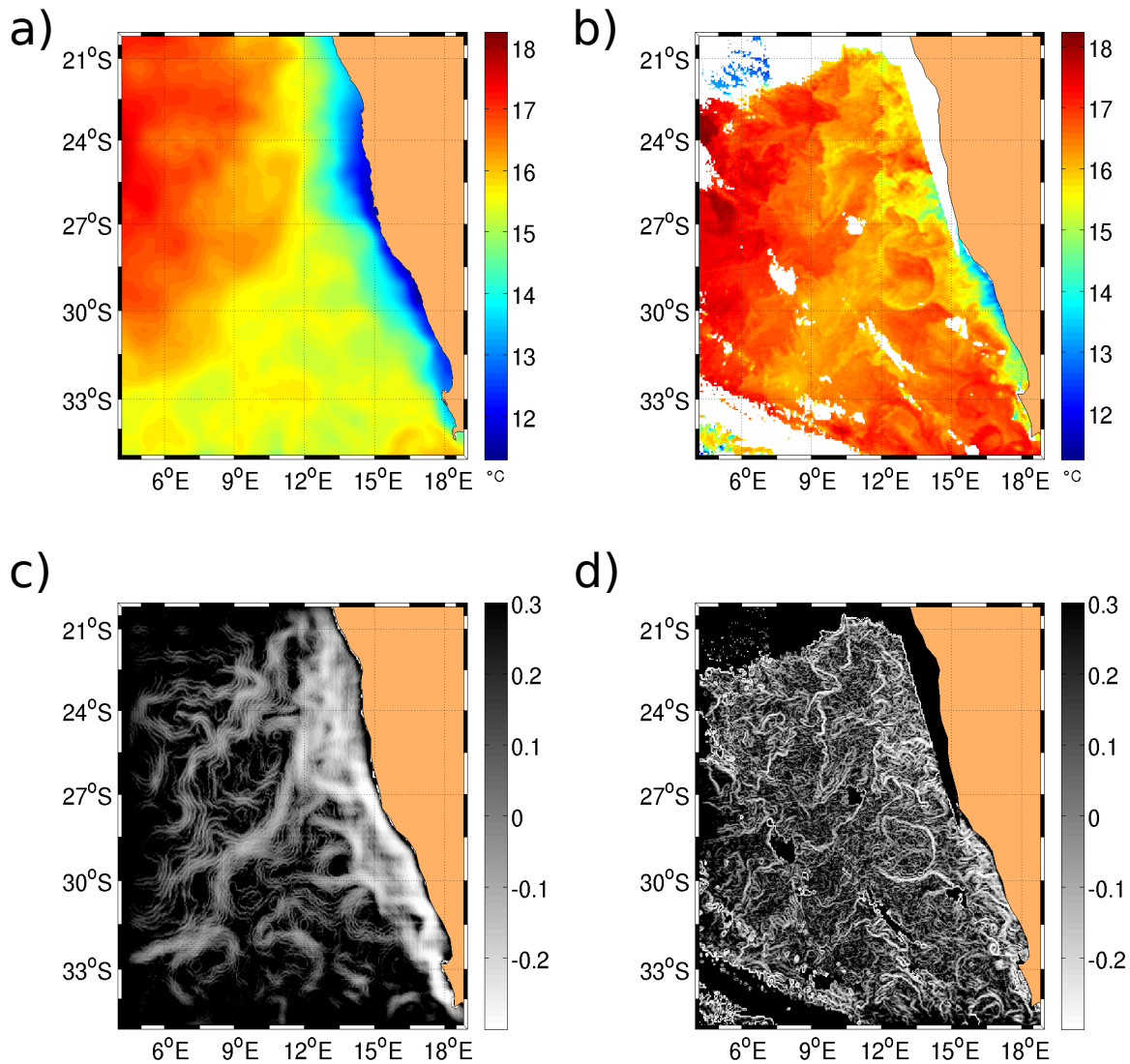


Fig. 3. Snapshot of SST fields corresponding to September 21, 2006 regridded at $1/32^\circ$ of spatial resolution from OSTIA (a) and MODIS (b). c) and d) are the spatial distribution of Singularity Exponents of the SST plotted in a) and b) respectively.

3.2 Functional dependencies between the singularity exponents of intensive physical variables

Another important idea implemented in the methodology is the coupling of the physical information contained in SST and OC images with the ocean pCO₂. For instance, it is known, that marine primary production is a key process in the oceanic carbon cycling, and variations in the concentration of phytoplankton biomass can be related to variations in the carbon concentrations. Surface temperature is also related with the gas solubility in the ocean, and areas with high temperatures are more suitable for releasing CO₂ to the at-

mosphere. We have studied the relationship of SST and Chl-a variables with pCO₂ using the outputs of a coupled Regional Ocean Modeling System (ROMS) with the BIOgeochemical model of the Eastern Boundary Upwelling System (BIOEBUS) (Gutknecht et al., 2013). The ROMS includes several levels of nesting and composed grids, which makes it an ideal model for the basis of our methodology in working in two spatial resolutions. BIOEBUS has been developed for the Benguela to simulate the first trophic levels of the Benguela ecosystem functioning and also to include a more detailed description of the complete nitrogen cycle, including denitrification and anammox processes as well as the

oxygen cycle and the carbonates system. This model coupled to ROMS has been also shown to be skillful in simulating many aspects of the biogeochemical environment in the Peru upwelling system (Montes et al., 2014). When one compares SST and Chl with pCO₂ one finds undetermined functional dependency. However, when comparing their corresponding singularity exponents one obtains a clear simpler dependency. This is due to the fact that SST, Chl and pCO₂ are variables of different dimensions while singularity exponents are dimensionless quantities.

These results show that there is a good correlation between the turbulent transitions given by the singularity exponents and that singularity exponents are good candidates for a multiresolution analysis performed on the three signals SST, Chl and pCO₂. Furthermore, they studied the log-histograms and singularity spectrum to show that singularity exponents of pCO₂ images possess a multifractal character. Therefore, such signals are expected to feature cascading, multiscale and other characteristic properties found in turbulent signals as described in Turiel et al. (2008) and Arneodo et al. (1995). Consequently the use of non-linear and multiscale signal processing techniques is justified to assess the properties of the pCO₂ signal along the scales.

Therefore, in our methodology, the local connection between different tracer concentrations, i.e., SST, Chl-a with pCO₂, in order to obtain a proxy for pCO₂ at high resolution, is performed by using the following linear combination of multiple linear regressions:

$$\mathcal{S}(pCO_2)(\mathbf{x}) = a(\mathbf{x})\mathcal{S}(SST)(\mathbf{x}) + b(\mathbf{x})\mathcal{S}(Chl - a)(\mathbf{x}) + c(\mathbf{x})\mathcal{S}(pCO_2^{LR})(\mathbf{x}) + d(\mathbf{x}), \quad (3)$$

where $\mathcal{S}(pCO_2)(\mathbf{x})$ refers to the singularity exponent of pCO₂ at \mathbf{x} , $\mathcal{S}(SST)(\mathbf{x})$ to singularity exponent of SST at \mathbf{x} , $\mathcal{S}(Chl - a)(\mathbf{x})$ to singularity exponent of Chl-a signal at \mathbf{x} . In order to propagate the pCO₂ signal itself along the scales in the multiresolution analysis we introduce $\mathcal{S}(pCO_2^{LR})$ to refer to the singularity exponent from pCO₂ at low resolution interpolated on the high resolution grid. $a(\mathbf{x})$, $b(\mathbf{x})$ and $c(\mathbf{x})$ are the regression coefficients associated to singularity exponents, and $d(\mathbf{x})$ is the error associated to the multiple-linear regression. These regression coefficients are estimated using simulated data from the ROMS-BIOEBUS model developed for the Benguela upwelling system and described above.

Once we have introduced these coefficients in the linear combination on satellite data, we obtain a proxy for singularity exponents of pCO₂ at high resolution and we can perform the multiresolution analysis to infer the information across the scales.

3.3 Cross-scale inference of pCO₂ data

Among the functional that are most commonly used to analyze the scaling properties of multifractal systems, wavelets

occupy a prominent position. Wavelets projections are integral transforms that separate the relevant details of a signal at different scale levels, and since they are scale-tunable, they are appropriate to analyze the multiscale behavior of cascade processes and to represent them. However, as shown in Pottier et al. (2008), Yahia et al. (2010) and Pont et al. (2011a) not all multiresolution analyses are equivalent but the most interesting are those which are optimal with respect to inferring information along scales, in particular, in a context where information is to be propagated along the scales from low resolution to high resolution.

The effective determination of an optimal wavelet for a given category of turbulent signals is, in general, a very difficult open problem. This difficulty can be contoured by considering multiresolution analysis performed on the signal of the singularity exponents $h(\mathbf{x})$ themselves. Indeed, since the most singular manifold (the set \mathcal{F}_h associated to the lowest singularity exponents) is associated with the highest frequencies in a turbulent signal, and since the multifractal hierarchy \mathcal{F}_h converges to this set, it is physically evident that the multifractal hierarchy corresponds to a description of the detail spaces of a multiresolution analysis performed on a turbulent signal. Consequently, designing by V_j and W_j respectively the approximation and detail spaces computed on $\mathcal{S}(pCO_2)(\mathbf{x})$ signal, and by A_j and P_j their corresponding orthogonal projections from space $\mathbf{L}^2(\mathbb{R}^2)$, the following reconstruction formula:

$$A_{j-1}pCO_2 = A_jpCO_2 + P_jh \quad (4)$$

consists in reconstructing a signal across the scales using the detail spaces of the singularity exponents, hence regenerating a physical variable according to its cascade decomposition. From these ideas, which are described more fully in the paper by Sudre et al. (2015), we can deduce the following algorithm for reconstructing a super-resolution pCO₂ signal from available high-resolution SST, Chl-a, and low-resolution pCO₂:

- i) After selecting a given area of study, compute the singularity exponents of SST, Chl and pCO₂ at low and high resolution from ROMS-BIOEBUS output. This is done once and then they can be used for every computation performed over the same area.
- ii) Using Eq. 2 estimate ocean pCO₂ at low resolution: $pCO_2^{ocean} = pCO_2^{air} - F/\alpha K$, where:
 - F : air-sea surface CO₂ fluxes provided by Carbon-Tracker product.
 - K : gas transfer velocity obtained by the parametrization developed by Sweeney et al, 2007, as a function of the wind.
 - α : gas solubility derived according to Weiss 1974.
 - pCO_2^{air} : provided by Globalview-CO2 product.

- iii) Obtain the regression coefficients a, b, c and d of Eq. 3 for the singularity exponents obtained in step ii)
- iv) Calculate the singularity exponents of available satellite SST, Chl at high resolution and ocean pCO₂ at low resolution (step i).
- v) Use coefficients obtained in step iii) and apply Eq. 3 to the singularity exponents from satellite data (step iv) to estimate a proxy of singularity exponents of high resolution ocean pCO₂, $S(pCO_2)$.
- vi) Using Eq. 4 reconstruct pCO₂ at high resolution from the multiresolution analysis computed on signal $S(pCO_2)$ and cross-scale inference on pCO₂ at low resolution.
- vii) Use Eq. 2 to calculate air-sea CO₂ fluxes from the inferred pCO₂ obtained in step vi)

The methodology has been successfully applied to dual ROMS simulation data at two resolutions, obtaining a mean absolute error of pCO₂ reconstructed values with respect to ROMS simulated high-resolution pCO₂ equal to 3.2 μ atm (0.89% of relative error) (V. Garçon 2014, pers. comm.).

4 Preliminary analysis of Sea Surface Temperature (SST) and Chlorophyll images

Since the key element for the application of our inferring algorithm relies on the ability in obtaining the singularity exponents and their quality, the success of our methodology applied to satellite data depends on the quality and the properties of the input data. In order to assess such properties we perform a statistical analysis of the different datasets. First, we analyze the Chl and SST Probability Distribution Functions (PDFs). In Fig. 4a) we present the PDFs for Chl from MERIS, GLOBCOLOUR-GSM and GLOBCOLOUR-AVW; the required histograms are built using daily Chl values over 2006 and 2008 at each point of the spatial grid in the area of Benguela. Each one of these PDFs is broad and asymmetric, with a small mode (i.e. the value of Chl at which the probability reaches its maximum) between 0.1 and 0.2 mg/m³ and a heavy tail. The heavy tail (i.e. non-gaussianity) means that the extreme values can not be neglected. In this case Chl values are mostly low (small mode) but there is a significant number of isolated and dispersed patches with very high Chl values producing intermittency (long tails in the PDF). Intermittency in the context of turbulence is the tendency of the probability distributions of some quantities to develop long tails, i.e. the occurrence of very extreme events.

Further information can be obtained by computing statistical quantities such as standard deviation, skewness and kurtosis. Table 1 shows that standard deviation is rather the same for the three OC products while skewness and kurtosis values hugely differ. The degree of intermittency is measured

by the kurtosis, the higher the kurtosis, the higher the intermittency. We found that kurtosis is almost ten times higher in GLOBCOLOUR products than in MERIS.

We have repeated the same analysis for SST datasets. The PDFs of the SST values for OSTIA and MODIS products are shown in Fig. 4b). In this case both PDFs possess similar shape, broad with the mode around 18°C with a much less deviation from gaussianity as compared to Chl values. This is confirmed with the computation of the statistical moments showed in Table 1. We obtain small values of the standard deviation and kurtosis in both cases, although slightly higher in the case of MODIS. The kurtosis is less than 3, meaning that there is not an important number of atypical values of SST and therefore weak and short tails in the PDFs.

PRODUCT	Standard Deviation	Skewness	Kurtosis
MERIS	0.116 mg/m ³	2.6	21.9
GLOBCOLOUR-AVW	0.122 mg/m ³	4.7	204.6
GLOBCOLOUR-GSM	0.123 mg/m ³	5.3	215.4
OSTIA	1.97°C	-0.05	1.9
MODIS	2.11°C	-0.17	2.6

Table 1. Values of the standard deviation, skewness and kurtosis for the different products.

If turbulence is dominated by coherent structures localized in space and time, then PDFs are not Gaussian, and the kurtosis will be higher than 3. To analyze this feature we turn to the statistical analysis of the singularity exponents, which, as explained before, have the ability to unveil the cascade structures given by the tracer gradients. In Fig. 4c), it can be seen that the PDFs of the singularity exponents of the Chl for the three products are rather similar with almost the same standard deviation and with a slightly higher value of the kurtosis in the GLOBCOLOUR-GSM product, 4.3, than for MERIS, 3.1, and GLOBCOLOUR-AVW, 3.1, (see Table 2). This shows that Chl from GLOBCOLOUR-GSM product contains more extreme values which produce intermittency likely given by the strongest structures. The PDFs of the singularity exponents of the SST for OSTIA is narrower and with a highest peak than for MODIS SST. However, surprisingly the kurtosis is larger for singularity exponents of OSTIA SST, 5.1, than for MODIS SST, 3.2.

PRODUCT	Standard Deviation	Skewness	Kurtosis
MERIS	0.32 mg/m ³	0.59	3.1
GLOBCOLOUR-AVW	0.36 mg/m ³	0.40	3.1
GLOBCOLOUR-GSM	0.35 mg/m ³	0.63	4.3
OSTIA	0.29°C	1.0	5.1
MODIS	0.32°C	0.5	3.2

Table 2. Values of the standard deviation, skewness and kurtosis of the singularity exponents for the different products.

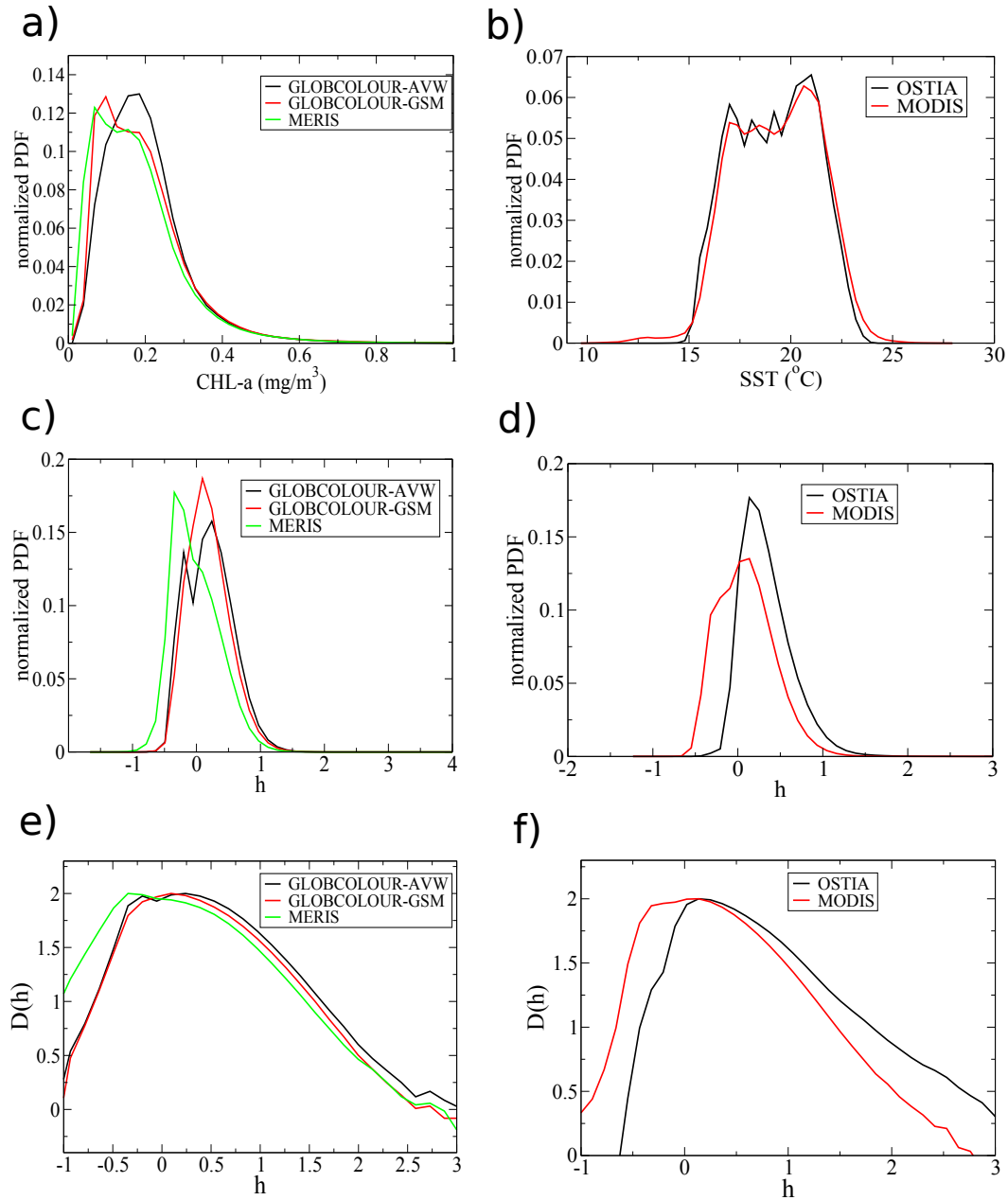


Fig. 4. a) Probability distribution functions (PDF) of Chl-a values derived from the three products: MERIS, GLOBCOLOUR-AVW and GLOBCOLOUR-GSM. (b) PDF of SST values for OSTIA and MODIS products. (c) PDFs for the singularity exponents of Chl for the different Ocean Colour products. (d) PDFs for the singularity exponents of Chl for the different SST products. (e) Singularity spectra corresponding to c). (f) Singularity spectra corresponding to d).

645 Finally, we obtain the singularity spectra from the empirical distributions of singularity exponents shown in Fig. 650 4c) and d). One can see in Fig. 4e) that for the two GLOBCOLOUR products the shape of the spectrum is closer to binomial cascade of multiplicative processes than for MERIS

(we will come back to this discussion in more depth in next sections).

5 Results

5.1 Inference of super-resolution pCO₂ and air-sea fluxes of CO₂ offshore of the Benguela upwelling system

We now apply the methodology to infer ocean pCO₂ maps at super-resolution from pCO₂ at low resolution derived from CarbonTracker data (see Section 2) in the offshore area of the Benguela region.

From now on we are going to use the following notation for the three different sources of pCO₂: we refer to the values of ocean pCO₂ derived from CarbonTracker as pCO₂^{CTrack}, values of inferred pCO₂ at higher resolution from pCO₂ at low resolution together with computation of the cascade onto SST and chlorophyll-a concentration as pCO₂^{infer}, and finally pCO₂^{insitu} refers to the values of the in-situ measurements of pCO₂.

For the inference we use the following three combinations of Chl and SST products described in Section 2.1: MERIS-OSTIA, GLOBCOLOUR-OSTIA, GLOBCOLOUR-MODIS. We do not include the MERIS-MODIS combination in the analysis due to the fact that the use of such satellite data results in a too drastic reduction of the coverage of the resulting pCO₂^{infer} field, but using merged products offers wider coverage instead. The inferred pCO₂ obtained from two merged products for Chl-a, GLOBCOLOUR GSM and GLOBCOLOUR AVW is rather the same, with a slightly improvement when GSM is used. Thus for the sake of clarity, we only show Figures for GLOBCOLOUR-GSM and some statistical results making comparisons with AVW. Therefore from now on we refer GLOBCOLOUR to the Chl-a obtained by the GSM merged method.

Figure 5d shows one example of pCO₂^{infer} field corresponding to March 22, 2006 when we use SST data from OSTIA (Fig. 5a), Ocean Colour from GLOBCOLOUR (Fig. 5b) at high resolution and pCO₂ at low resolution (Fig. 5c) derived from CarbonTracker air-sea flux of CO₂ (Fig. 5e) and using the Eq. 2. The air-sea flux of CO₂ at super-resolution (Fig. 5f) is obtained from the pCO₂^{infer} field and a constant value of atmospheric pCO₂ equal to 385.6 μatm. On this day the images of the pCO₂^{infer} and fluxes of CO₂ combine a good coverage and a clear identification of small scale structures and gradients, as described below. Note that the air-sea CO₂ flux from CarbonTracker presents a large land mask close to the coast and consequently, we will rather study the offshore area of the Benguela upwelling. Comparing the figures one can see that values of pCO₂ and CO₂ flux over the domain (from 4.5°E to coast (taking out the mask of the CarbonTracker domain and from 20.5°S to 35°S) vary between 360 and 380 μatm and between -4 × 10⁻⁸ and 0.5 × 10⁻⁸ mol C m⁻² s⁻¹, respectively. The resultant flux of CO₂ is positive (towards the atmosphere) in the region 25°-28°S and from 7°E eastward to the coast and is negative (into the ocean) south of 30°S and east of 6°E. Thus, we see that in the south-

ern part of the Benguela area there is a strong CO₂ sink and the northern part behaves as a weak CO₂ source.

What is new in the reconstructed pCO₂ is, for instance, that the cascade of information across the scales enhances gradients in the field of pCO₂. It is striking that the high-resolution map provides the position of the North-South dipole "front" located at 30°S (i.e. -1.5 × 10⁻⁸ isoline in green) which could not be inferred accurately from the low resolution map. The low resolution map would provide an estimate of the location of the "front" that is ~1.5° northern of the location inferred from the high-resolution map. Moreover one can see small structures in the pCO₂^{infer} field between 33-35°S and 9-12°E in the pCO₂^{infer} field (Fig. 5d). The small spatial scale variability is captured in the super-resolution pCO₂ field and not in pCO₂^{CTrack} as shown in the longitudinal profile of the images plotted in Fig. 5 at latitude 33.5°S (see Fig. 6). The same high spatial variability given by the small scale structures of the SST and OC images can be appreciated in their corresponding longitudinal profiles displayed in the panel a) and b) of Fig. 6. It is worthy to note the change in the shape of the profiles between the pCO₂^{infer} and pCO₂^{CTrack} and fluxes of CO₂ at large scale, from 5.5°E to 10.5°E, showing that the method not only introduces small scale features but also modifies the large scale spatial variability.

5.2 Evaluation of using different satellite products

Since the underlying aim of this work is to develop a methodology to infer super-resolution pCO₂ from space using remote observations, we perform a validation study of the different data used in the inferring computations. This provides us an evaluation of which satellite products are more suitable for our methodology and thus a gain in confidence in our method as well as a better understanding of its limitations. The evaluation analysis is addressed taking into account two main concerns: one related to the number of valid points yielded in the pCO₂^{infer} field, and another with regard to the degradation of the information contained in the transition fronts. A valid point is a pixel where we have simultaneously Chl, SST and pCO₂ values from CarbonTracker, from which we can obtain a value of pCO₂^{infer}, in other words without missing information. One example comparing the reconstructed pCO₂ field obtained from the mentioned above three products combinations is plotted in Fig. 7. The general pattern is quite similar in all of them with some differences in the details of the small scales and in the missing points due to cloudiness (white patches). This example clearly shows how different coverage of the pCO₂ can be in the field depending on the products combination.

Similar results are found when one compares the spatial distribution of time average over 2006 and 2008 of the pCO₂^{infer} values for the three product combinations (Fig 8). The same pattern with an area of higher pCO₂ between 24°S and 30°S and lower pCO₂ values outside this region is pro-

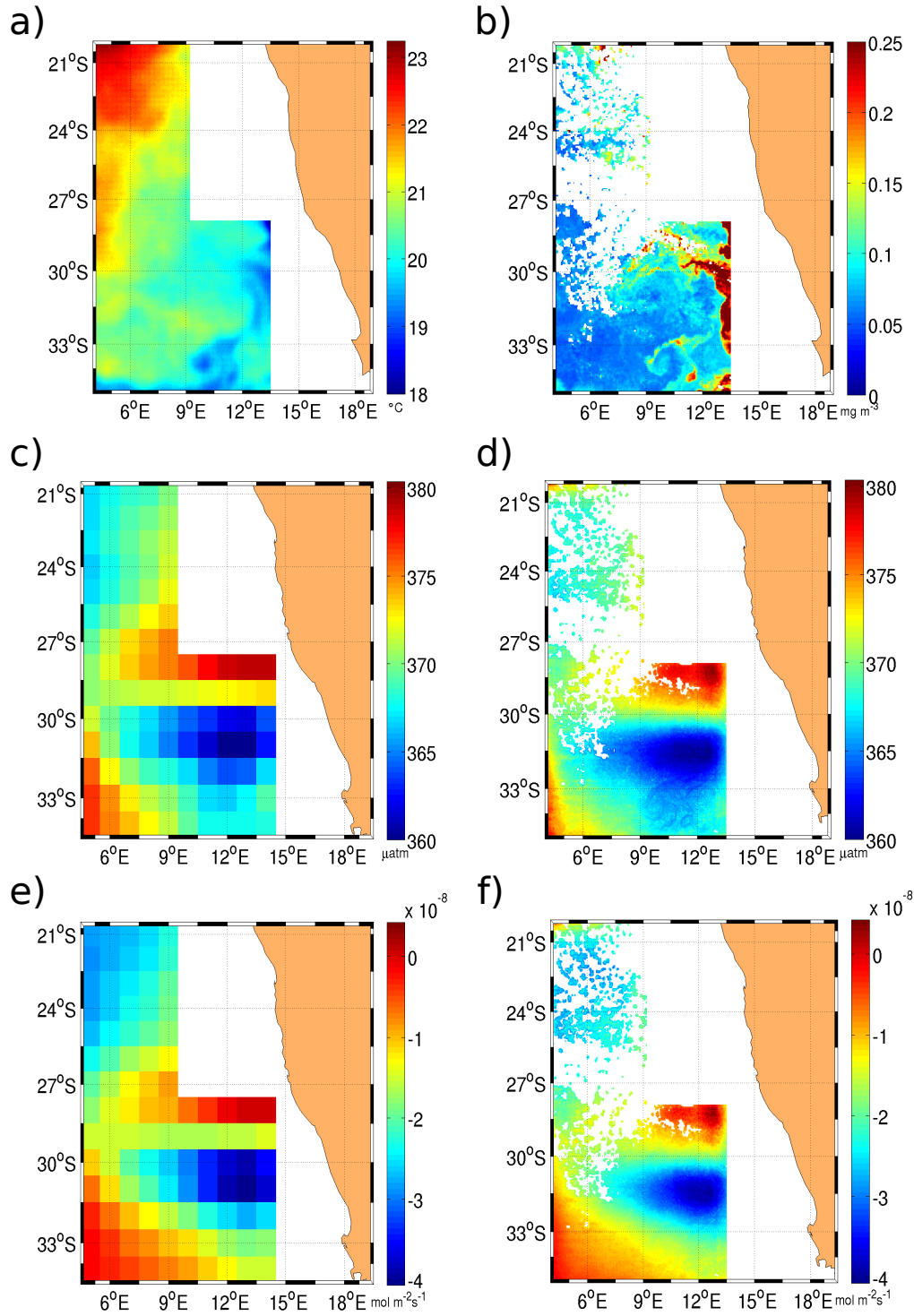


Fig. 5. Maps of a) SST from OSTIA at $1/32^\circ$ of spatial resolution, b) Chl at $1/32^\circ$ of spatial resolution from GSM GLOBCOLOUR products, c) ocean pCO₂ from CarbonTracker at the spatial resolution of 1° , d) inferred pCO₂ at super-resolution ($1/32^\circ$) derived from OSTIA SST and GLOBCOLOUR-GSM Chl-a shown in a) and b) respectively, e) Air-sea CO₂ flux as derived from CarbonTracker and f) Air-sea CO₂ flux computed from super-resolution pCO₂ shown in d) at $1/32^\circ$. All images correspond to March 22, 2006. White color corresponds to invalid pixels due to cloudiness and points inside of the CarbonTracker land mask

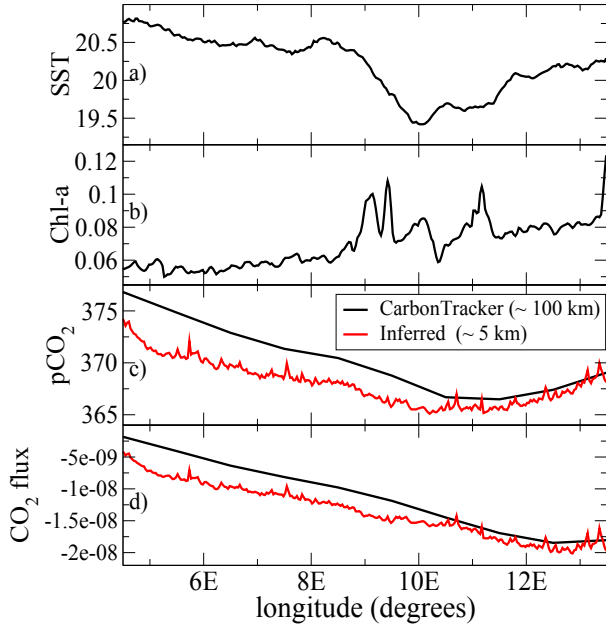


Fig. 6. Longitudinal profiles of a) SST from OSTIA products in units of °C, b) Chl from GLOBCOLOUR-GSM ocean in mg/m³, c) pCO₂^{Track} (black line) and pCO₂^{infer} (red line) in μatm, and d) air-sea CO₂ fluxes from CarbonTracker (black line) and inferred air-sea CO₂ fluxes (red line) in mol C m⁻² s⁻¹. All these longitudinal profiles correspond to the fixed latitude equal to 33.5°S of the plots shown in Fig. 5 for March 22, 2006.

duced with the three combinations. The most noticeable differences are located in the most northern region and in the south-eastern region off Benguela. This can be quantified by computing the standard deviation of the reconstructed pCO₂ values among the different combination of datasets. Fig. 8 d) shows the spatial distribution of the time average over 2006 and 2008 of the standard deviation computed in each pixel among the pCO₂^{infer} values obtained from the three products combinations. The larger values of the dispersion (not greater than 5 μatm) are found in the northern region from 23°S to the north and in the southern region, in particular, in the area from 31.5 °S to the south and from 11°E to the east. The low value of the dispersion indicates that the method is robust when different datasets are used in the inference.

First, we compute the number of valid points in the pCO₂^{infer} field for each product combination. Table 3 summarizes the total number of valid points for each products combination for both years 2006 and 2008. As expected, the number of valid points is found to be the highest for the combination of merged products OSTIA SST and GLOBCOLOUR-GSM with $N_{GO}=27313043$ points, followed by the combination MODIS SST and GLOBCOLOUR Chl with $N_{MG}=20397047$ points and finally by the OSTIA SST and MERIS Chl combination with

Valid Points in the inferred pCO ₂ fields: 2006/2008	
Nb total pixels domain	55711378
Nb Points OSTIA-MERIS	9800776
Nb Points OSTIA-GLOBCOLOUR(AVW)	26382072
Nb Points OSTIA-GLOBCOLOUR(GSM)	27313043
Nb Points MODIS-GLOBCOLOUR(GSM)	20397047
Proportion OSTIA-GSM/OSTIA-MERIS	2.78
Proportion OSTIA-GSM/MODIS-GSM	1.33
Proportion MODIS-GSM/OSTIA-MERIS	1.08
LP_{OM}	82%
$LP_{OG}(AVW)$	53%
$LP_{OG}(GSM)$	51%
LP_{MG}	63%

Table 3. Number of valid points in the pCO₂ fields and their difference between the three combinations of MERIS or GLOBCOLOUR CHL with OSTIA or MODIS SST in the area of Benguela.

$N_{OM}=9800776$ points. Looking at the different proportions, we find that the number of valid points is 2.78 times larger when using the merged products OSTIA and GLOBCOLOUR-GSM than using OSTIA and MERIS, 1.33 times larger than using MODIS and GLOBCOLOUR-GSM and 1.08 times larger using OSTIA SST and GSM Chl-a than using MODIS SST and GSM Chl a. Further, if we know that the total number of pixels in the domain taking out the points of the CarbonTracker mask and for the two years is $N_p=55711378$, one can estimate the loss of valid points for each combination, LP_x . LP_x is computed by dividing the relative difference between the number of total available pixels in the domain N_p and the number of points in the inferred pCO₂ field obtained for each product combination, N_x , with respect to the total number of pixels N_p , $LP_x = \frac{N_p - N_x}{N_p} 100\%$. Here the subscript x refers to the product combination (e.g. $LP_x = LP_{OM}$, LP_{OG} and LP_{MG} for the loss of valid points with the OSTIA-MERIS, OSTIA-GLOBCOLOUR and MODIS-GLOBCOLOUR products combination, respectively). The loss of valid points due to cloudiness in the ocean colour and SST images is less severe for the OSTIA-GLOBCOLOUR combination with a loss of 51% and being the more affected by the cloudiness the OSTIA-MERIS combination with a loss of 82%.

Next we explore the quality of the information contained in the transition fronts, in particular, in the non-merged products such as MERIS OC and MODIS SST as compared to the merged products: GLOBCOLOUR OC and OSTIA SST. The PDFs of pCO₂ values from CarbonTracker and pCO₂^{infer} values for the three combinations of OC and SST products, i.e. MERIS-OSTIA, GLOBCOLOUR-OSTIA, MODIS-GLOBCOLOUR (see Fig. 9) show that there is a good correspondence of all pCO₂^{infer} values with those from pCO₂^{Track}. Indeed the histograms show also a better

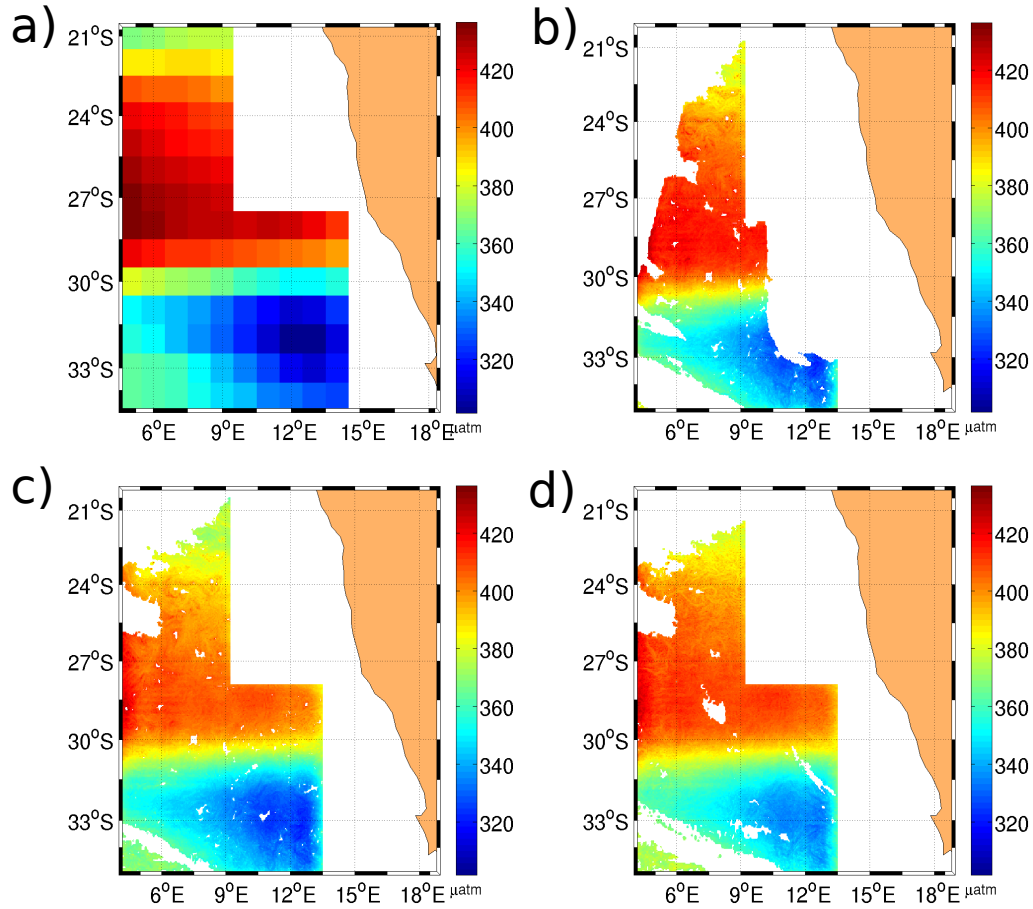


Fig. 7. a) Map of $p\text{CO}_2$ field at low resolution from CarbonTracker. Reconstructed $p\text{CO}_2$ field at super-resolution using: b) OSTIA SST and MERIS Chl-a, c) OSTIA SST and GSM-GLOBCOLOUR Chl-a and d) MODIS SST and GSM-GLOBCOLOUR Chl-a. All maps correspond to September 21 2006.

agreement between merged products and CarbonTracker: the peak of the PDF for $p\text{CO}_2^{\text{infer}}$ is closer to CarbonTracker peak in the case of OSTIA and GLOBCOLOUR than when using MERIS and MODIS products.

binomial multiplicative process.

835 5.3 Validation with in-situ measurements

820 Furthermore, to analyze the realism of the transitions fronts for the different products we compute the singularity spectra for the three product combinations (see Figure 10). One can see that at low values of h (singularity exponent), related to the most singular manifolds, the shape of singularity spectrum for inferred data from merged products better matches a binomial cascade, with an improved description of the dimension of the sharpest transition fronts. We know from the theory, that tracers advected by the flow in the turbulent regime, as it happens in the ocean, shows a multifractal behavior with a characteristic singularity spectrum $D(h)$ similar, for some types of turbulence, to $D(h)$ for the

Next, we perform a validation analysis of the results of our algorithm to infer $p\text{CO}_2$ at super-resolution with field observations of oceanic $p\text{CO}_2$. In particular we perform the validation using $p\text{CO}_2$ ocean data from in-situ measurements ($p\text{CO}_2^{\text{insitu}}$) taken in the Benguela region (see Section 2.3). We decided to carry out directly the validation on $p\text{CO}_2$ rather than on the air-sea CO_2 flux since the field measurements do provide oceanic $p\text{CO}_2$ data.

845 An example of the qualitative comparison of values of $p\text{CO}_2^{\text{Ctrack}}$, $p\text{CO}_2^{\text{infer}}$ for all the products combinations and $p\text{CO}_2^{\text{insitu}}$ at the intersections of the QUIMA cruise during July 4-7th, 2008, as a function of the longitudinal coordinate

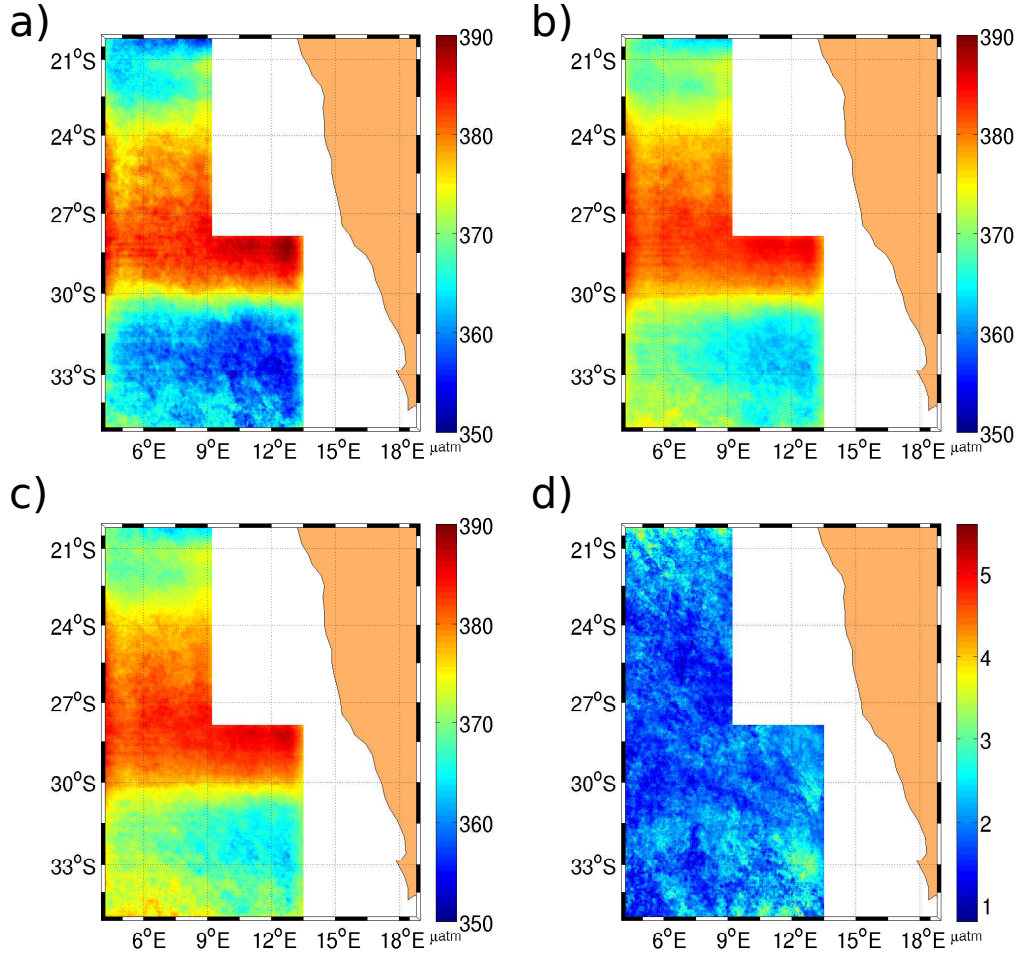


Fig. 8. Spatial distribution of the time average over both 2006 and 2008 years of the $p\text{CO}_2^{\text{infer}}$ values using: a) OSTIA SST and MERIS Chl-a, b) OSTIA SST and GSM-GLOBCOLOUR Chl-a and c) MODIS SST and GSM-GLOBCOLOUR Chl-a. d) Map with spatial distribution of the standard deviation for the $p\text{CO}_2^{\text{infer}}$ among the different combination of the datasets.

of the intersections, is shown in Figure 11. While there are visible differences between various $p\text{CO}_2$ values, the values of $p\text{CO}_2^{\text{infer}}$ approximate better $p\text{CO}_2^{\text{insitu}}$ values than those of $p\text{CO}_2^{\text{ctrack}}$. The small scale patterns are well reproduced in the inferred $p\text{CO}_2$ field. Values of $p\text{CO}_2^{\text{infer}}$ exhibit gradients and small scale fluctuations, likely induced by the presence of fronts, which can be also detected on the profile of the in situ measurements of $p\text{CO}_2$. Most of days $p\text{CO}_2^{\text{infer}}$ and $p\text{CO}_2^{\text{ctrack}}$ values overestimate $p\text{CO}_2^{\text{insitu}}$ values. In some days, $p\text{CO}_2^{\text{infer}}$ values follow the same trend, with the same small scale fluctuations than $p\text{CO}_2^{\text{insitu}}$.

First, we analyze the number of valid intersections for each product combination. A valid intersection is a placement in space and time common to the inferred, CarbonTracker and in-situ $p\text{CO}_2$, without missing values. On one hand, among the 20 available cruises in the Benguela through 2005, 2006

and 2008 we find that the total number of in-situ measurements in the Benguela region under study is $N_{\text{insitu}}=17355$ and within the CarbonTracker domain this number is reduced to $N_{\text{ctrack}}=8377$ measurements. To estimate the loss of valid intersections due to the land mask of the CarbonTracker we compute the relative difference of the number of intersections between the cruise trajectories and the CarbonTracker domain with respect to the number of the in-situ measurements, $L_{\text{ctrack}} = \frac{N_{\text{insitu}} - N_{\text{ctrack}}}{N_{\text{insitu}}} 100\% = 52\%$, showing that half of the measurements fall within the coastal region of the Benguela (land masked by CarbonTracker).

The number of valid intersections is the largest with the OSTIA-GLOBCOLOUR combination (Table 4). To quantify the loss of valid intersections between the in-situ measurements and points in the $p\text{CO}_2^{\text{infer}}$ field, likely due to

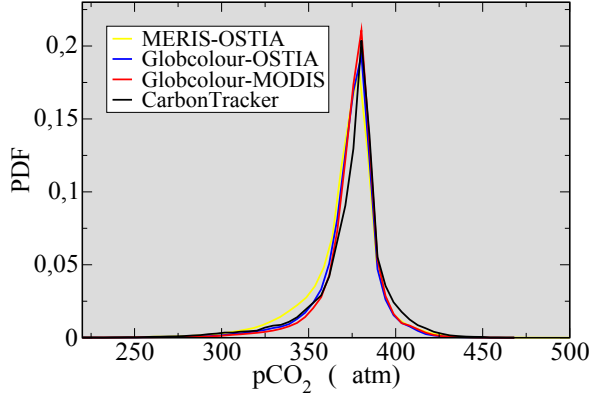


Fig. 9. Comparison of the Probability Distribution Functions of CarbonTracker and inferred pCO₂ values over the Benguela area for the three different SST and OC product combinations: MERIS Chl and OSTIA SST, GLOBCOLOUR merged Chl and OSTIA SST, and GLOBCOLOUR merged Chl and MODIS SST

the cloudiness, we compute the relative difference between the number of measurements into the CarbonTracker domain and the valid points in the inferred pCO₂ field with respect to the number of intersections measurements of each cruise and the pCO_2^{Ctrack} field, $L_{infer} = \frac{N_{Ctrack} - N_{infer}}{N_{Ctrack}} 100\%$.

We repeat such a computation for the three product combinations. The percentage of losses of intersections in inferred field L_{infer} becomes twice as large than in the case of the OSTIA-SST and MERIS-Chl combination, and even higher than with the CarbonTracker domain mask.

In order to quantitatively study the difference between values of pCO_2^{Ctrack} and pCO_2^{infer} with respect to pCO_2^{insitu} measurements we compute the following statistical quantities:

- *Mean Difference (MD)*: average over all the intersections of the difference between pCO_2^{Ctrack} , pCO_2^{infer} and pCO_2^{insitu} at the same intersection, i ,

$$MD_{Ctrack} = \frac{1}{N} \sum_{i=1}^N (pCO_2^{Ctrack}(i) - pCO_2^{insitu}(i)) \quad (5)$$

$$MD_{infer} = \frac{1}{N} \sum_{i=1}^N (pCO_2^{infer}(i) - pCO_2^{insitu}(i)) \quad (6)$$

where N is the number of intersections.

- *Mean Absolute Error (AE)*: average over all the intersections of the absolute values of the difference between pCO_2^{Ctrack} or pCO_2^{infer} and pCO_2^{insitu} at the same inter-

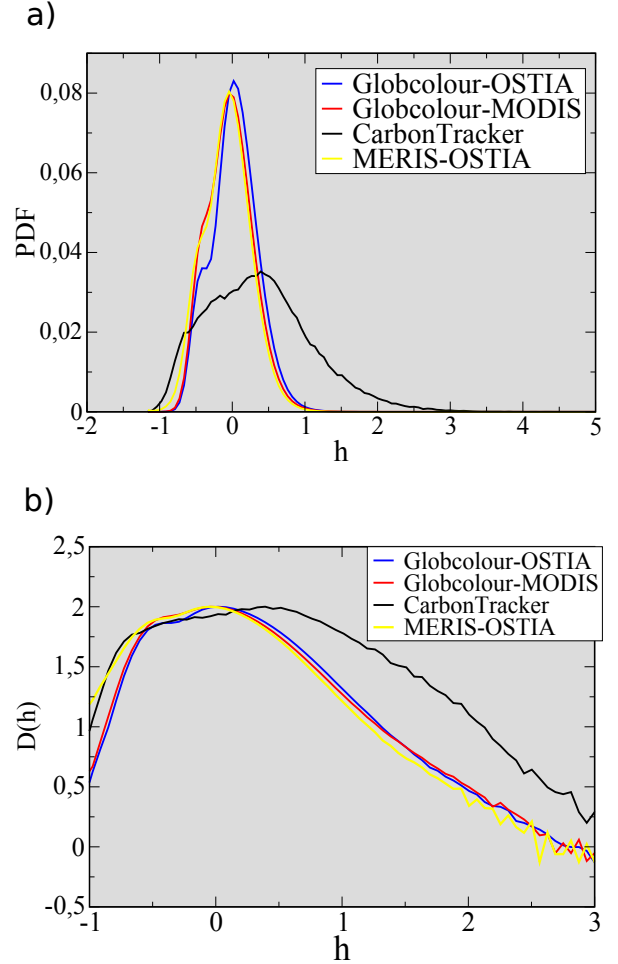


Fig. 10. a) Empirical PDFs for the singularity exponents of pCO₂ fields from CarbonTracker and from the cascade of the three product combinations. b) Associated singularity spectra. In these computations we use all the pCO₂ values obtained in 2006 and 2008.

section,

$$AE_{Ctrack} = \frac{1}{N} \sum_{i=1}^N |pCO_2^{Ctrack}(i) - pCO_2^{insitu}(i)| \quad (7)$$

$$AE_{infer} = \frac{1}{N} \sum_{i=1}^N |pCO_2^{infer}(i) - pCO_2^{insitu}(i)| \quad (8)$$

- *Mean Relative Error (RE)*: average over all the intersections of the errors of the estimated values of pCO₂ (CarbonTracker or inferred) with respect to the refer-

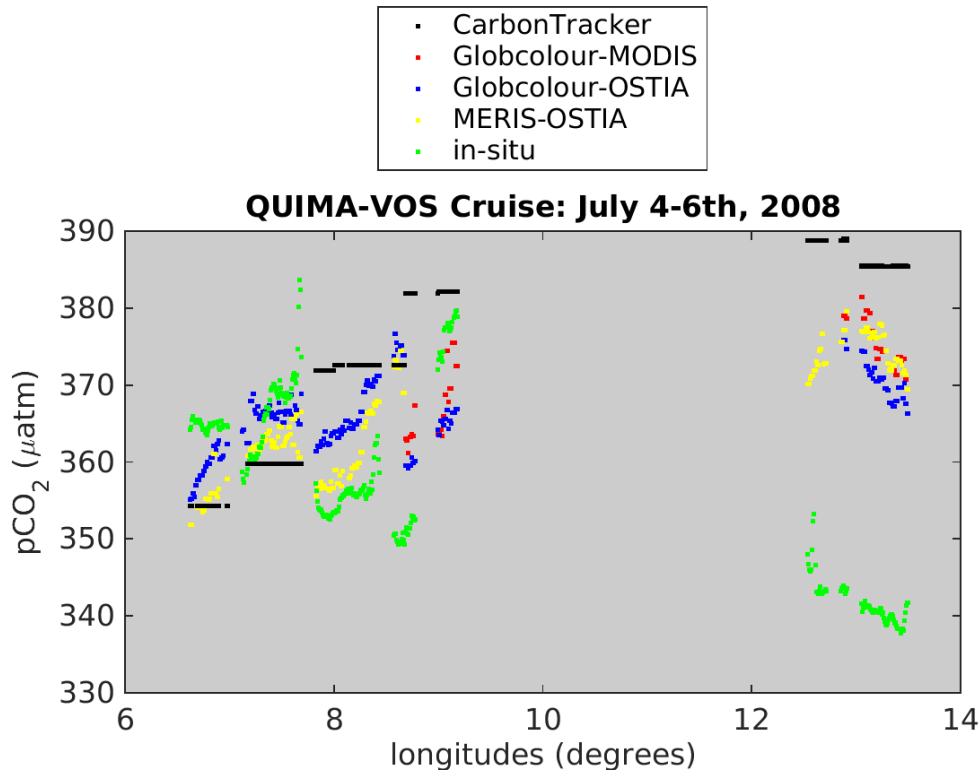


Fig. 11. Values of pCO_2^{Ctrack} (black points), pCO_2^{infer} (MODIS-SST/GLOBCOLOUR-Chl) (red points), pCO_2^{infer} (OSTIA-SST/GLOBCOLOUR-Chl) (blue points) pCO_2^{infer} (OSTIA-SST/MERIS-Chl) (yellow points) and pCO_2^{insitu} (green points) in the intersections as a function of latitude corresponding to the valid intersections during the QUIMA cruise through July 4-6th, 2008

ence pCO_2 values (in-situ) at the same intersection,

$$RE_{Ctrack} = \frac{1}{N} \sum_{i=1}^N \left| \frac{pCO_2^{Ctrack}(i) - pCO_2^{insitu}(i)}{pCO_2^{insitu}(i)} \right| \quad (9)$$

$$RE_{infer} = \frac{1}{N} \sum_{i=1}^N \left| \frac{pCO_2^{infer}(i) - pCO_2^{insitu}(i)}{pCO_2^{insitu}(i)} \right| \quad (10)$$

We started the statistical validation by analyzing each QUIMA cruise separately (not shown) and we found that in most of the cruises, the absolute error for inferred pCO_2 is relatively small (less than 15 μatm) except on August 21, 2006 and May 17, 2008 with an error of 44 μatm and 30 μatm , respectively. Then we address the global validation using all available cruises during these years.

We summarize in Table 4 the results of the computations of the errors given by Eq. 7 to Eq.10 by making averages over all valid intersections found during 2005, 2006 and 2008. The absolute error, AE is smaller in the three cases of pCO_2^{infer} (17.77, 16.47 and 16.62 μatm for OSTIA-MERIS, OSTIA-GLOBCOLOUR and MODIS-GLOBCOLOUR combinations, respectively) than for pCO_2^{Ctrack} (21.34, 22.08 and 22.07 μatm , respectively), showing the fact that the estimated pCO_2 field at super-resolution using our algorithm is improving the pCO_2 field obtained from CarbonTracker. The smallest AE is for the combination of SST and Chl provided by merged products. The values of pCO_2^{Ctrack} are, in average, larger than pCO_2^{insitu} (MD_{Ctrack}

	OST-MER	OST-GLOB	MOD-GLOB
Nb valid intersections	747	1928	1460
L_{infer} (%)	91	76	82
MD_{Ctrack} (μatm)	2.97	8.83	14.93
MD_{infer} (μatm)	0.15	3.42	8.42
AE_{Ctrack} (μatm)	21.34	22.08	22.07
AE_{infer} (μatm)	17.77	16.47	16.62
RE_{Ctrack}	0.059	0.060	0.061
RE_{infer}	0.048	0.045	0.046

Table 4. Mean error, absolute error and relative error of pCO_2 values obtained from CarbonTracker and pCO_2 values inferred at super-resolution with respect to values of pCO_2 measurements during the QUIMA2005/QUIMA2006/QUIMA2008 cruises in the Benguela region.

= 2.97, 8.83 and 14.93 μatm) while the differences between $\text{pCO}_2^{\text{infer}}$ and $\text{pCO}_2^{\text{insitu}}$ values compensate each other ($MD_{\text{infer}} = 0.15, 3.42$ and $8.42 \mu\text{atm}$). In all cases the MD_{Ctrack} and MD_{infer} are positive, meaning that the pCO_2 values are overestimated. Finally, comparing the relative error of $\text{pCO}_2^{\text{Ctrack}}$ and $\text{pCO}_2^{\text{infer}}$ with respect to $\text{pCO}_2^{\text{insitu}}$, we found that the relative error is low in all cases, being smaller for $\text{pCO}_2^{\text{infer}}$ than for $\text{pCO}_2^{\text{Ctrack}}$.

Finally, if we only compare the statistics errors at the common valid intersections between the $\text{pCO}_2^{\text{infer}}$ using the three product combinations with $\text{pCO}_2^{\text{Ctrack}}$ and with the in-situ measurements (see Table 5), we obtain 458 mutual intersections. We obtain similar results that when taking into account all the intersections. The absolute error is smaller in the case of $\text{pCO}_2^{\text{infer}}$, 17.65 μatm , than with $\text{pCO}_2^{\text{Ctrack}}$, 20.24 μatm , indicating that our algorithm is improving the estimation of ocean pCO_2 . The smallest AE is again for the combination with merged products. MD is positive showing that the most of the time $\text{pCO}_2^{\text{infer}}$ and $\text{pCO}_2^{\text{Ctrack}}$ values are overestimated (It can be appreciated in Figure 11). Again the relative error is small, less than 0.06, for all the product combinations.

	OST-MER	OST-GLOB	MOD-GLOB
Nb valid intersections	458	458	458
$MD_{\text{Ctrack}} (\mu\text{atm})$	8.01	8.01	8.01
$MD_{\text{infer}} (\mu\text{atm})$	4.37	1.62	3.32
$AE_{\text{Ctrack}} (\mu\text{atm})$	23.23	23.23	23.23
$AE_{\text{infer}} (\mu\text{atm})$	19.92	16.31	18.85
RE_{Ctrack}	0.065	0.065	0.065
RE_{infer}	0.055	0.045	0.051

Table 5. Mean error, absolute error and relative error of pCO_2 values obtained from CarbonTracker and pCO_2 values inferred at super-resolution with respect to values of pCO_2 measurements during the QUIMA2005/QUIMA2006/QUIMA2008 cruises in the Benguela region at the same intersections.

6 Conclusions

In this work we have presented a method to infer high resolution CO₂ fluxes by propagating the small scales information given in satellite images across the scales of a multi-resolution analysis determined on the critical transitions giving by singularity exponents. More specifically, we have reconstructed maps of CO₂ fluxes at high resolution (4 km) offshore of the Benguela region using SST and ocean colour data at this resolution, and CarbonTracker CO₂ fluxes data at low resolution (110 km). The inferred representation of ocean surface pCO_2 improves the description provided by CarbonTracker, enhancing the small scale variability. Spatial fluctuations observed in latitudinal profiles of in-situ pCO_2

have been also obtained in the inferred pCO_2 , showing that the inferring algorithm is catching the small scales features of the pCO_2 field. The examination of different combinations of Ocean Colour and Sea Surface Temperature (SST) products reveals that using merged products, i.e. GLOBCOLOUR, the quality and the number of valid points in the pCO_2 field are increased. We have obtained that mean absolute errors of the inferred values of pCO_2 with respect to in-situ measurements are smaller than for CarbonTracker. The statistical comparison of inferred and CarbonTracker pCO_2 values with in-situ data shows the potential of our method as well as the shortcomings of using CarbonTracker data for the estimation of air-sea CO₂ fluxes. From these results it can be said that the outputs of our algorithm will only be as good as the inputs.

We are aware that further investigations can be performed in order to improve the algorithm. On one hand the multiple linear regression coefficients could be derived differentiating the seasons (i.e. coefficients would vary as a function of calendar month) considering the marked seasonal cycle in the Benguela upwelling system. Additionally, future works will be focused in the extension of the computations towards larger areas until being able to infer global high resolution CO₂ fluxes. This will allow us to perform an even more comprehensive and robust validation from in situ measurements since more in-situ measurements will be used to make the comparison.

Acknowledgements. This work is a contribution to ESA Support To Science Element Grant N° 400014715/11/I-NB OceanFlux-Upwelling Theme. The Surface Ocean CO₂ Atlas (SOCAT) is an international effort, supported by the International Ocean Carbon Coordination Project (IOCCP), the Surface Ocean Lower Atmosphere Study (SOLAS), and the Integrated Marine Biogeochemistry and Ecosystem Research program (IMBER), to deliver a uniformly quality-controlled surface ocean CO₂ database. The many researchers and funding agencies responsible for the collection of data and quality control are thanked for their contributions to SOCAT.

References

- Abraham, E. and Bowen, M.: Chaotic stirring by a mesoscale surface-ocean flow, *Chaos*, 12, 373–381, 2002.
- Abraham, E., Law, C., Boyd, P., Lavender, S., Maldonado, M., and Bowie, A.: Importance of stirring in the development of an iron-fertilized phytoplankton bloom, *Nature*, 407, 727, 2000.
- Arneodo, A., Argoul, F., Bacry, E., Elezgaray, J., and J.F., M.: *Ondelettes, multifractales et turbulence*, Diderot Editeur, Paris, France, 1995.
- Bakker, D. C. E., Pfeil, B., Smith, K., Hankin, S., Olsen, A., Alin, S. R., Cosca, C., Harasawa, S., Kozyr, A., Nojiri, Y., O'Brien, K. M., Schuster, U., Telszewski, M., Tilbrook, B., Wada, C., Akl, J., Barbero, L., Bates, N. R., Boutin, J., Bozec, Y., Cai, W.-J., Castle, R. D., Chavez, F. P., Chen, L., Chierici, M., Currie, K., de Baar, H. J. W., Evans, W., Feely, R. A., Fransson, A., Gao, Z., Hales, B., Hardman-Mountford, N. J.,

- Hoppema, M., Huang, W.-J., Hunt, C. W., Huss, B., Ichikawa, T.,¹⁰⁸⁰ Johannessen, T., Jones, E. M., Jones, S. D., Jutterström, S., Kitidis, V., Körtzinger, A., Landschützer, P., Lauvset, S. K., Lefèvre, N., Manke, A. B., Mathis, J. T., Merlivat, L., Metzl, N.,
1025 Murata, A., Newberger, T., Omar, A. M., Ono, T., Park, G.-H., Paterson, K., Pierrot, D., Ríos, A. F., Sabine, C. L., Saito, S.,¹⁰⁸⁵ Salisbury, J., Sarma, V. V. S. S., Schlitzer, R., Sieger, R., Skjelvan, I., Steinhoff, T., Sullivan, K. F., Sun, H., Sutton, A. J., Suzuki, T., Sweeney, C., Takahashi, T., Tjiputra, J., Tsurushima, N., van Heuven, S. M. A. C., Vandemark, D., Vlahos, P., Wallace, D. W. R., Wanninkhof, R., and Watson, A. J.: An update¹⁰⁹⁰ to the Surface Ocean CO₂ Atlas (SOCAT version 2), *Earth Syst. Sci. Data*, 6, 69–90, 2014.
- Berti, S. and Lapeyre, G.: Lagrangian reconstructions of temperature and velocity in a model of surface ocean turbulence, *Ocean Modelling*, 76, 59–71, 2014.¹⁰⁹⁵
- Bouchet, F. and Venaille, A.: Statistical mechanics of two-dimensional and geophysical flows, *Physics Reports*, 515, 227–295, 2012.
- 1040 Delcroix, T., Alory, G., Cravatte, S., Corregge, T., and McPhaden, M.: A gridded sea surface salinity dataset for the tropical Pa-¹¹⁰⁰cific with sample applications (1950–2008), *Deep-Sea Research I*, 58(1), 38–48, 2011.
- Dickey, T.: Emerging ocean observations for interdisciplinary data
1045 assimilation systems, *J. Marine Syst.*, 40–41, 5–48, 2003.
- Donlon, C. J., Martin, M., Stark, J., Roberts-Jones, J., Fiedler, E.,¹¹⁰⁵ and Wimmer, W.: The Operational Sea Surface Temperature and Sea Ice Analysis (OSTIA) system, *Remote Sensing of Environment*, 116, 140–158, 2012.
- 1050 Franco, A. C., Hernández-Ayón, J. M., Beier, E., Garçon, V., Maske, H., Paulmier, A., Färber-Lorda, J., Castro, R., and Sosa-Ávalos,¹¹¹⁰ R.: Air-sea CO₂ fluxes above the stratified oxygen minimum zone in the coastal region off Mexico, *J. Geophys. Res. Oceans*, 119, 2014.
- 1055 Frisch, U.: *Turbulence: The Legacy of A.N. Kolgomorov*, Cambridge University Press, 1995.¹¹¹⁵
- Garbe, C. and Vihharev, J.: Modeling of atmospheric transport of chemical species in the Polar regions, in: *IEEE International Geoscience and Remote Sensing Symposium*, IEEE, Munich, Germany, 6047–6050, 22–27 July, 2012.
- 1060 Garbe, C., Handler, R. A., and Jahne, B.: *Transport at the Air–¹¹²⁰Sea Interface – Measurements, Models and Parameterizations*, Springer-Verlag, Berlin, ISBN: 978-3-540-36904-2, 2007.
- Garbe, C., Rutgersson, A., Boutin, J., Delille, B., Fairall, C., Gruber, N., Hare, J., Ho, D., Johnson, M., de Leeuw, G., Nightingale, P., Pettersson, H., Piskozub, J., Sahlee, E., Tsai, W.,¹¹²⁵ Ward, B., Woolf, D., and Zappa, C.: Transfer across the air–sea interface, in: *Ocean–Atmosphere Interactions of Gases and Particles*, edited by: Liss, P. and Johnson, M., Springer-Verlag, Norwich, UK, 55–112, 2014.
- 1070 GLOBALVIEW: Cooperative Global Atmospheric Data Integration¹¹³⁰ Project. 2013, updated annually. Multi-laboratory compilation of synchronized and gap-filled atmospheric carbon dioxide records for the period 1979–2012. Compiled by NOAA Global Monitoring Division: Boulder, Colorado, U.S.A. Data product accessed at <http://dx.doi.org/10.3334/OBSPACK/1002>, 2013.¹¹³⁵
- González-Dávila, M., Santana-Casano, J., and Ucha, I.: Seasonal variability of *fCO₂* in the Angola-Benguela region, *Progress in Oceanography*, 83(1–4), 124–133, 2009.
- Gruber, N., Gloor, M., Fletcher, S., Doney, S., Dutkiewicz, S., and co authors: Oceanic sources, sinks and transport of atmospheric CO₂, *Global Biogeochem. Cycles*, 23, GB1005, 2009.
- Gutknecht, E., Dadou, I., Vu, B. L., Cambon, G., Sudre, J., Garçon, V., Machu, E., Rixen, T., Kock, A., Flohr, A., Paulmier, A., and Lavik, G.: Coupled physical/biogeochemical modeling including O₂-dependent processes in the Eastern Boundary Upwelling Systems: application in the Benguela, *Biogeosciences*, 10, 3559–3591, 2013.
- Hales, B., Takahashi, T., and Bandstra, L.: Atmospheric CO₂ uptake by a coastal upwelling system, *Global Biogeochem. Cycles*, 19, GB1009, 2005.
- IOCCP: Surface Ocean CO₂ Variability and Vulnerabilities Workshop, Rep. 7, U.N. Educ., Sci. and Cult. Organ., Paris, 5, 2007.
- Klein, P. and Lapeyre, G.: The oceanic Vertical Pump Induced by Mesoscale and Submesoscale Turbulence, *Annu. Rev. Mar. Sci.*, 1, 351–75, 2009.
- Landschützer, P., Gruber, N., Bakker, D., and Schuster, U.: Recent variability of the global ocean carbon sink, *Global Biogeochem. Cycles*, 28(9), 927–949, 2014.
- Mahadevan, A., Lévy, M., and Mémary, L.: Mesoscale variability of sea surface *pCO₂*: What does it respond to?, *Global Biogeochemical Cycles*, 18, GB1017, 2004.
- Maji, S. K. and Yahia, H. M.: Edges, transitions and criticality, *Pattern Recognition*, 47, 2104–2115, 2014.
- Maritorena, S. and Siegel, D. A.: Consistent merging of satellite ocean color data sets using a bio-optical model, *Remote Sensing of Environment*, 94, 429–440, 2005.
- Monteiro, P.: Eastern boundary currents: The Benguela Current System, in: *Carbon and Nutrient Fluxes in Continental Margins: A Global Synthesis*, Chap. 2, edited by Liu, K., Atkinson, L., Quiñones, R., and Talaue-McManus, L., Springer, Berlin, 2010.
- Montes, I., Dewitte, B., Gutknecht, E., Paulmier, A., Dadou, I., Oschlies, A., and Garçon, V.: High-resolution modeling of the Eastern Tropical Pacific Oxygen Minimum Zone: Sensitivity to the tropical oceanic circulation, *Journal of Geophysical Research: Oceans*, p. accepted, 2014.
- Paulmier, A., Ruiz-Pino, D., and Garçon, V.: The Oxygen Minimum Zone (OMZ) off Chile as intense source of CO₂ and N₂O, *Continental Shelf Research*, 28, 2746–2756, 2008.
- Paulmier, A., Ruiz-Pino, D., and Garçon, V.: CO₂ maximum in the Oxygen Minimum Zone (OMZ), *Biogeosciences*, 8, 1–14, 2011.
- Peters, W., Jacobson, A., C. Sweeney, A. A., Conway, T., Masarie, K., J.B. Miller, a. L. B., Petron, G., Hirsch, A., Worthy, D., van der Werf, G., Randerson, J., Wennberg, P., Krol, M., and Tans, P.: An atmospheric perspective on North American carbon dioxide exchange : CarbonTracker, *Proceedings of the National Academy of Sciences of the USA*, 104(48), 18 925–18 930, 2007.
- Pfeil, B., Olsen, A., Bakker, D. C. E., Hankin, S., Koyuk, H., Kozyr, A., Malczyk, J., Manke, A., Metzl, N., Sabine, C. L., Akl, J., Alin, S. R., Bates, N., Bellerby, R. G. J., Borges, A., Boutin, J., Brown, P. J., Cai, W.-J., Chavez, F. P., Chen, A., Cosca, C., Fassbender, A. J., Feely, R. A., González-Dávila, M., Goyet, C., Hales, B., Hardman-Mountford, N., Heinze, C., Hood, M., Hoppema, M., Hunt, C. W., Hydes, D., Ishii, M., Johannessen, T., Jones, S. D., Key, R. M., Körtzinger, A., Landschützer, P., Lauvset, S. K., Lefèvre, N., Lenton, A., Laurantou, A., Merlivat, L., Midorikawa, T., Mintrop, L., Miyazaki, C., Murata, A., Nakadate, A., Nakano, Y., Nakaoka, S., Nojiri, Y.,

- Omar, A. M., Padin, X. A., Park, G.-H., Paterson, K., Perez, F. F., Pierrot, D., Poisson, A., Ríos, A. F., Santana-Casiano, J. M., Salisbury, J., Sarma, V. V. S. S., Schlitzer, R., Schneider, B., Schuster, U., Sieger, R., Skjelvan, I., Steinhoff, T., Suzuki, T., Takahashi, T., Tedesco, K., Telszewski, M., Thomas, H., Tilbrook, B., Tjiputra, J., Vandemark, D., Veness, T., Wanninkhof, R., Watson, A. J., Weiss, R., Wong, C. S., and Yoshikawa-Inoue, H.: A uniform, quality controlled Surface Ocean CO₂ Atlas (SOCAT), *Earth Syst. Sci. Data*, 5, 125–143, 2013.
- Pont, O., Turiel, A., and J., P.-V. C.: On optimal wavelet bases for the realization of microcanonical cascade processes, *Int. J. Wavelets Multiresolut Inf. Process.*, 9(1), 35–61, 2011a.
- Pont, O., Turiel, A., and Yahia, H.: An optimized algorithm for the evaluation of local singularity exponents in digital signals., vol. LNCS 6636 of *14th International Workshop on Combinatorial Image Analysis (IWCIA 2011)*, Springer-Verlag, Madrid, 2011b.
- Pottier, C., Turiel, A., and Garçon, V.: Inferring missing data in satellite chlorophyll maps using turbulent cascading, *Remote Sensing of Environment*, 112, 4242–4260, 2008.
- Rind, D. *et al.*: Complexity and climate, *Science*, 284, 1999.
- Rödenbeck, C., Bakker, D. C. E., Metzl, N., Olsen, A., Sabine, C., Cassar, N., Reum, F., Keeling, R. F., and Heimann, M.: Interannual sea–air CO₂ flux variability from an observation-driven ocean mixed-layer scheme, *Biogeosciences*, 11, 4599–4613, 2014.
- Sabine, C. L., Hankin, S., Koyuk, H., Bakker, D. C. E., Pfeil, B., Olsen, A., Metzl, N., Kozyr, A., Fassbender, A., Manke, A., Malczyk, J., Akl, J., Alin, S. R., Bellerby, R. G. J., Borges, A., Boutin, J., Brown, P. J., Cai, W.-J., Chavez, F. P., Chen, A., Cosca, C., Feely, R. A., González-Dávila, M., Goyet, C., Hardman-Mountford, N., Heinze, C., Hoppema, M., Hunt, C. W., Hydes, D., Ishii, M., Johannessen, T., Key, R. M., Körtzinger, A., Landschützer, P., Lauvset, S. K., Lefèvre, N., Lenton, A., Lourantou, A., Merlivat, L., Midorikawa, T., Mintrop, L., Miyazaki, C., Murata, A., Nakadate, A., Nakano, Y., Nakaoka, S., Nojiri, Y., Omar, A. M., Padin, X. A., Park, G.-H., Paterson, K., Perez, F. F., Pierrot, D., Poisson, A., Ríos, A. F., Salisbury, J., Santana-Casiano, J. M., Sarma, V. V. S. S., Schlitzer, R., Schneider, B., Schuster, U., Sieger, R., Skjelvan, I., Steinhoff, T., Suzuki, T., Takahashi, T., Tedesco, K., Telszewski, M., Thomas, H., Tilbrook, B., Vandemark, D., Veness, T., Watson, A. J., Weiss, R., Wong, C. S., and Yoshikawa-Inoue, H.: Surface Ocean CO₂ Atlas (SOCAT) gridded data products, *Earth Syst. Sci. Data*, 5, 145–153, 2013.
- Santana-Casiano, J., González-Dávila, M., and Ucha, I.: Carbon dioxide fluxes in the Benguela upwelling system during winter and spring: A comparison between 2005 and 2006, *Deep Sea Research Part II*, 56(8–10), 533–541, 2009.
- Savtchenko, A., Ouzounov, D., Ahmad, S., Acker, J., Leptoukh, G., Koziara, J., and Nickless, D.: Terra and Aqua MODIS products available from NASA GES DAAC, *Advances in Space Research*, 34, 710–714, 2004.
- Sudre, J., Yahia, H., Pont, O., and Garçon, V.: Ocean turbulent dynamics at super resolution from optimal multiresolution analysis and multiplicative cascade, in revision at IEEE TGRS, 2015.
- Sweeney, C., Gloor, E., Jacobson, A., Key, R., McKinley, G., Sarmiento, J., and Wanninkhof, R.: Constraining global air–sea gas exchange for CO₂ with recent bomb 14C measurements, *Global Biogeochemical Cycles*, 21, GB2015, 2007.
- Takahashi, T., Sutherland, S. C., Sweeney, C., Poisson, A., Metzl, N., Tilbrook, B., Bates, N., Wanninkhof, R., Feely, R., Sabine, C., Olafsson, J., and Nojiri, Y.: Global sea–air CO₂ flux based on climatological surface ocean pCO₂, and seasonal biological and temperature effects, *Deep-Sea Research II*, 49, 1601–1622, 2002.
- Takahashi, T., Sutherland, S. C., Sweeney, C., Feely, R. A., Chipman, D. W., Hales, B., Friederich, G., Chavez, F., Sabine, C., Watson, A., Bakker, D. C. E., Schuster, U., Metzl, N., Yoshikawa-Inoue, H., Ishii, M., Midorikawa, T., Nojiri, Y., Kortzinger, A., Steinhoff, T., Hoppema, M., Olafsson, J., Anarson, T. S., Tilbrook, B., Johannessen, T., Olsen, A., Bellerby, R., Wong, C. S., Delille, B., Bates, N. R., and de Baar, H. J. W.: Climatological mean and decadal change in surface ocean pCO₂, and net sea–air CO₂ flux over the global oceans, *Deep-Sea Research II*, 56, 554–577, 2009.
- Telszewski, M., Chazottes, A., Schuster, U., Watson, A. J., Moulin, C., Bakker, D. C. E., González-Dávila, M., Körtzinger, A., Lüger, H., Olsen, A., Omar, A., Padin, X. A., Ríos, A., Steinhoff, T., Santana-Casiano, M., Wallace, D. W. R., and Wanninkhof, R.: Estimating the monthly pCO₂ distribution in the North Atlantic using a self-organizing neural network, *Biogeosciences Discuss.*, 6, 3373–3414, 2009.
- Turiel, A., Isern-Fontanet, J., García-Ladona, E., and Font, J.: Multifractal Method for the Instantaneous Evaluation of the Stream Function in Geophysical Flows, *Phys. Rev. Lett.*, 95, 104502, 2005.
- Turiel, A., Yahia, H., and Pérez-Vicente, C.: Microcanonical multifractal formalism—a geometrical approach to multifractal systems: Part I. Singularity analysis., *J. Phys. A: Math. Theor.*, 41, 2008.
- Valsala, V. and Maksyutov, S.: Simulation and assimilation of global ocean pCO₂ and air–sea CO₂ fluxes using ship observations of surface ocean pCO₂ in a simplified biogeochemical offline model, *TellusB*, 62B, 821–840, 2010.
- Waldron, H. N., Monteiro, P. M. S., and Swart, N. C.: Carbon export and sequestration in the southern Benguela upwelling system: lower and upper estimates, *Ocean Sci.*, 5, 711–718, 2009.
- Weiss, R.: Carbon dioxide in water and seawater: the solubility of a non-ideal gas, *Marine Chemistry*, 2, 203–215, 1974.
- Yahia, H., Sudre, J., Pottier, C., and Garçon, V.: Motion analysis in oceanographic satellite images using multiscale methods and the energy cascade, *Pattern Recognition*, 43(10), 3591–3604, 2010.