

## ***Interactive comment on “Spatiotemporal patterns of tundra fires: late-Quaternary charcoal records from Alaska” by M. L. Chipman et al.***

**M. L. Chipman et al.**

mchipman@life.illinois.edu

Received and published: 8 June 2015

Response to reviewer comments and changes to the manuscript are in the attached supplementary pdf file.

Please also note the supplement to this comment:

<http://www.biogeosciences-discuss.net/12/C2639/2015/bgd-12-C2639-2015-supplement.pdf>

---

Interactive comment on Biogeosciences Discuss., 12, 3177, 2015.

Full Screen / Esc

Printer-friendly Version

Interactive Discussion

Discussion Paper



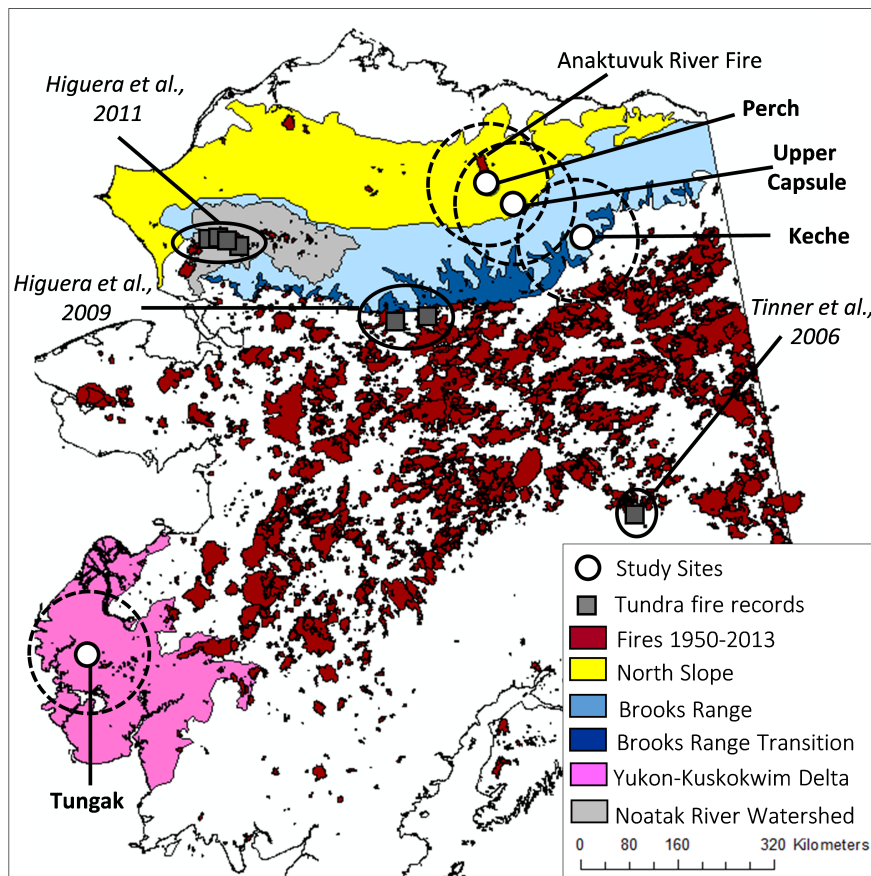


Fig. 1.

Full Screen / Esc

Printer-friendly Version

Interactive Discussion

Discussion Paper



Interactive  
Comment

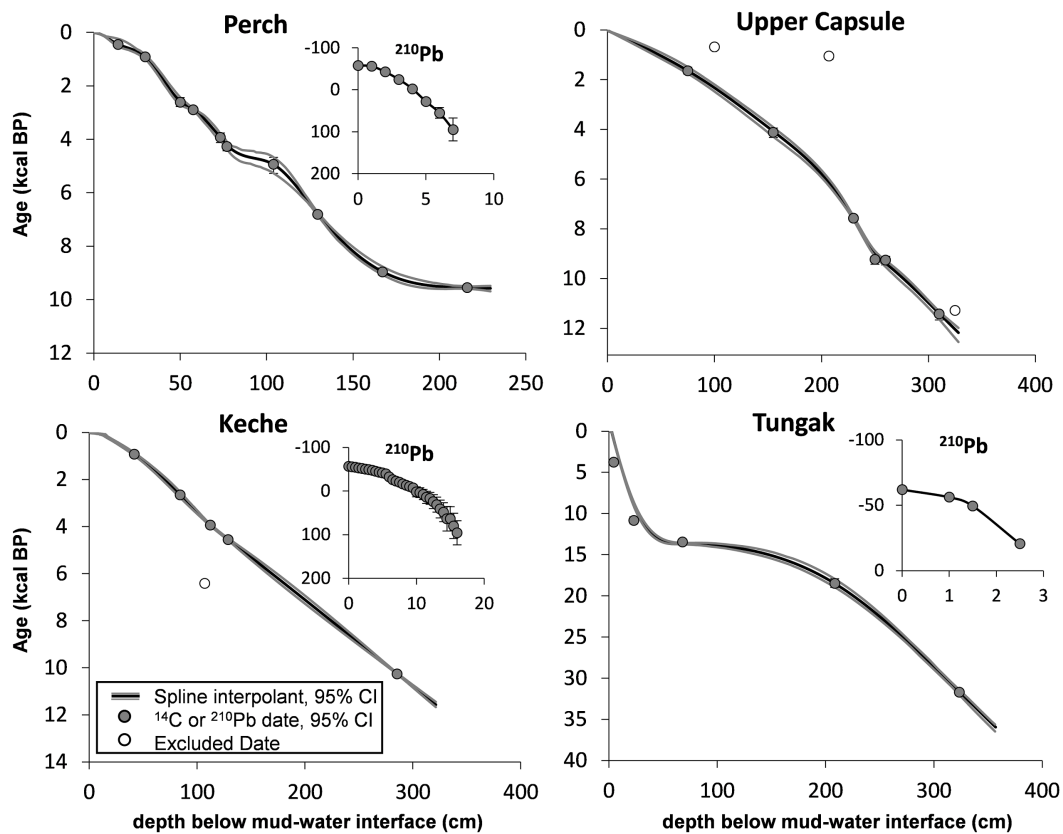


Fig. 2.

Full Screen / Esc

Printer-friendly Version

Interactive Discussion

Discussion Paper



Interactive  
Comment

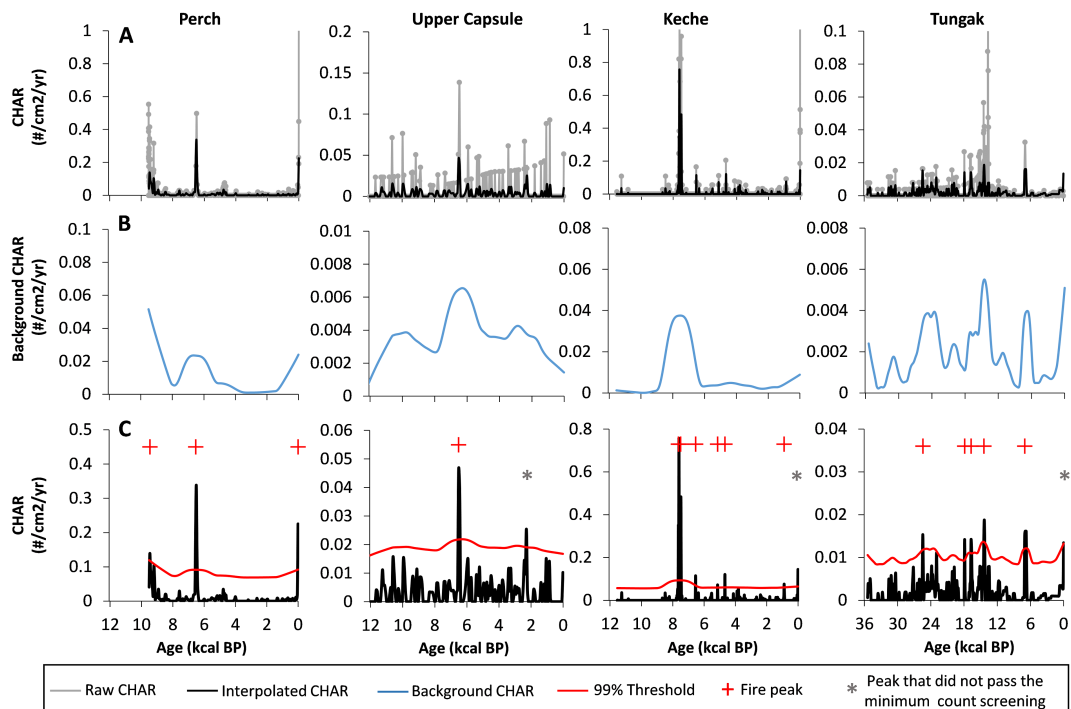


Fig. 3.

Full Screen / Esc

Printer-friendly Version

Interactive Discussion

Discussion Paper

Interactive  
Comment

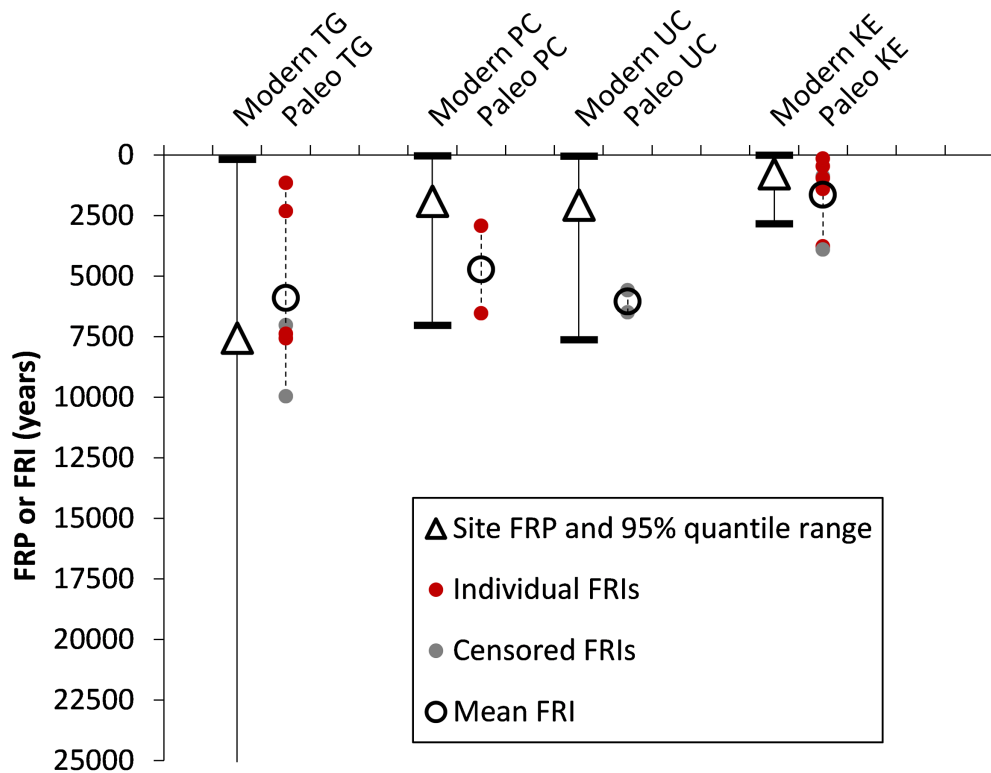


Fig. 4.

Full Screen / Esc

Printer-friendly Version

Interactive Discussion

Discussion Paper



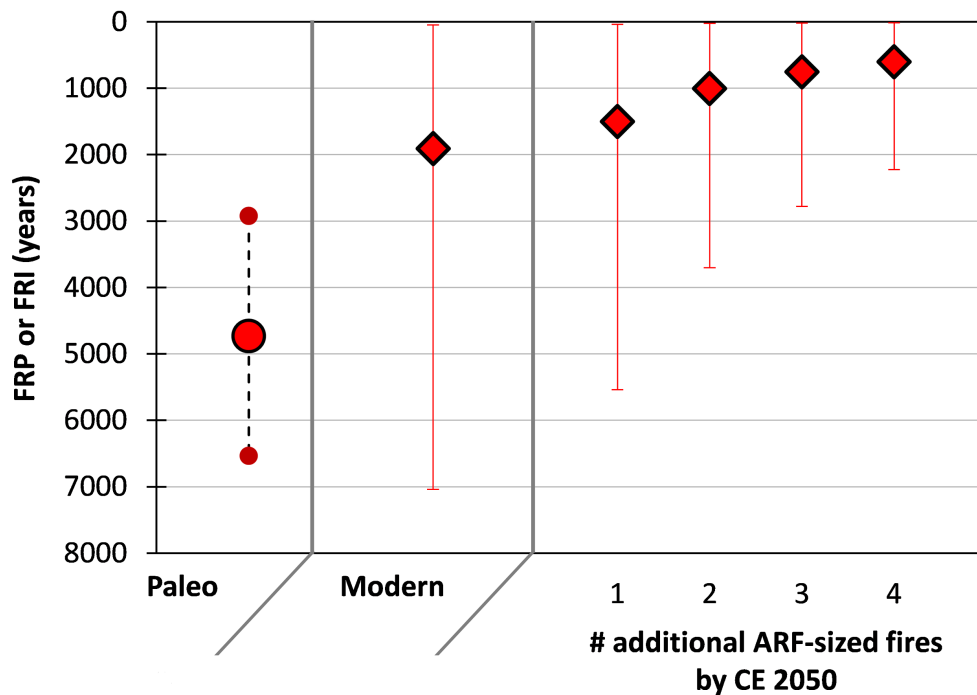


Fig. 5.

Interactive  
Comment

Full Screen / Esc

Printer-friendly Version

Interactive Discussion

Discussion Paper

