

## ***Interactive comment on “Wind-driven interannual variability of sea ice algal production over the western Arctic Chukchi Borderland” by E. Watanabe et al.***

**E. Watanabe et al.**

ejnabe@jamstec.go.jp

Received and published: 14 August 2015

Dear all

Following the comments from two anonymous referees, we revised the manuscript, titled “Wind-driven interannual variability of sea ice algal production in the western Arctic Chukchi Borderland”, by E. Watanabe and five other co-authors. The manuscript title was changed a little bit (from “over” to “in”). All manuscript, response comments, figures and tables are uploaded as a supplementary material (.zip). The revised parts are shown in a “change-tracked” manuscript. We hope that this version satisfies all of you. Please let me know if you find any problems.

C4315

Sincerely,

Corresponding author Eiji Watanabe

Please also note the supplement to this comment:

<http://www.biogeosciences-discuss.net/12/C4315/2015/bgd-12-C4315-2015-supplement.zip>

---

Interactive comment on Biogeosciences Discuss., 12, 7739, 2015.

C4316

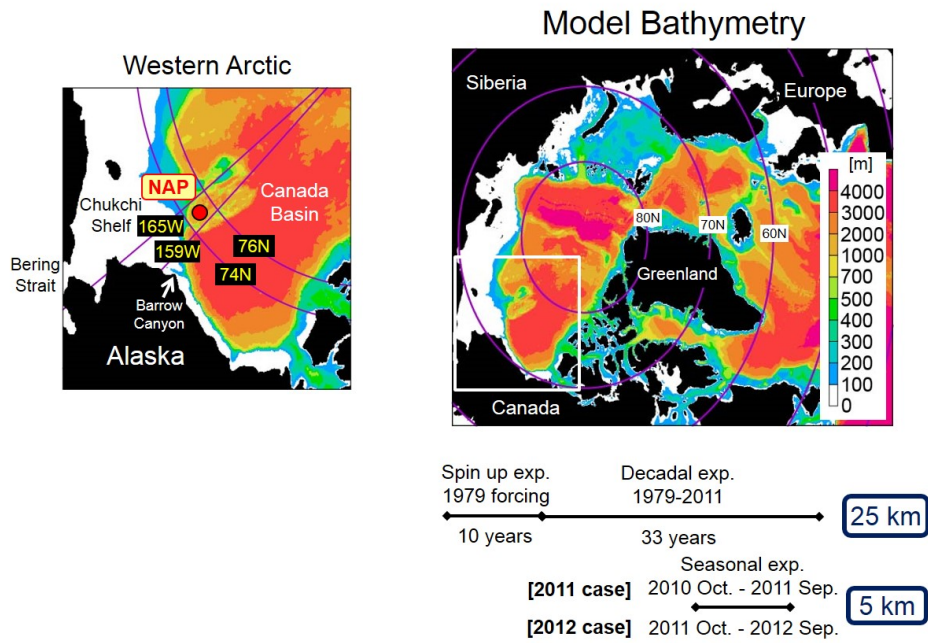


Fig. 1.

C4317

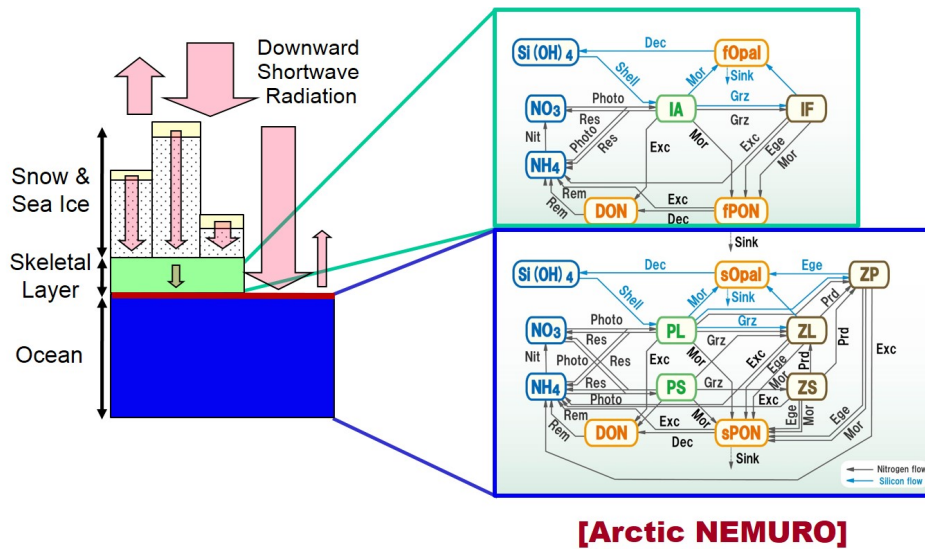


Fig. 2.

C4318

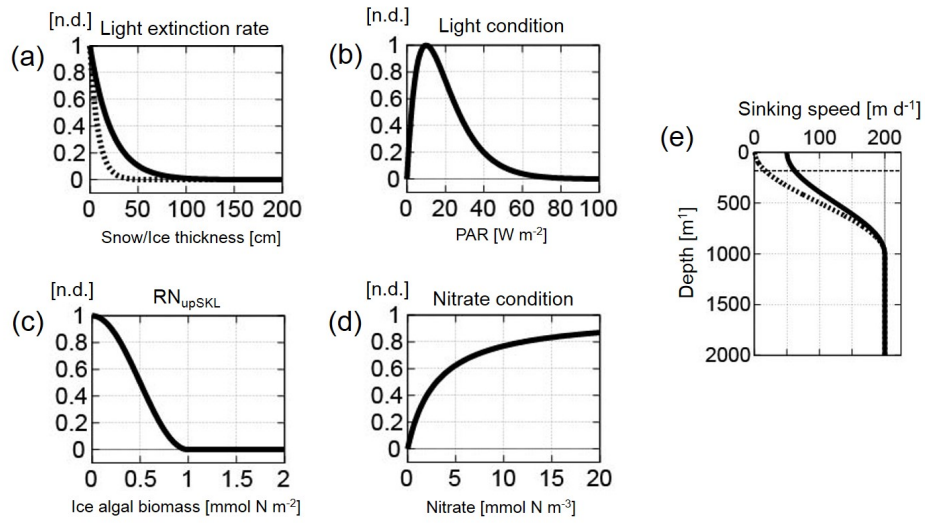


Fig. 3.

C4319

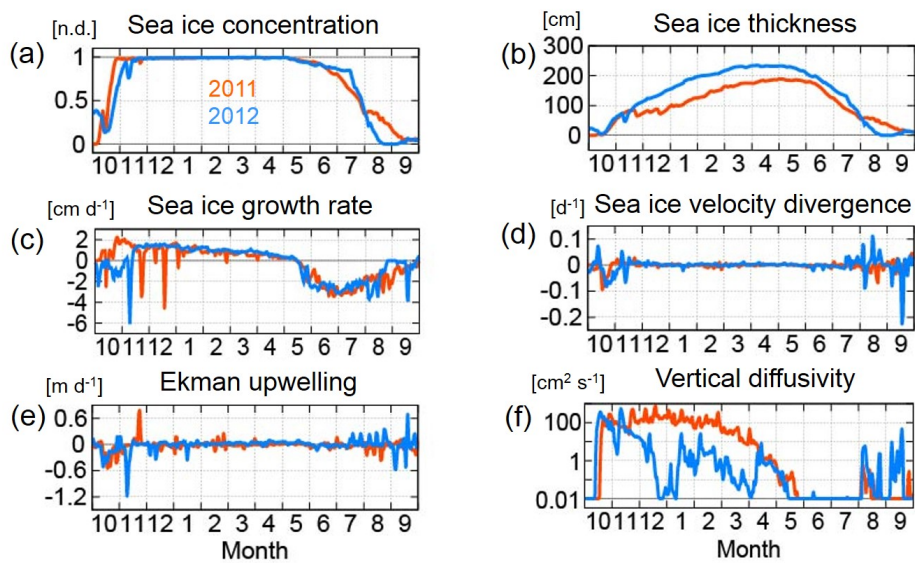


Fig. 4.

C4320

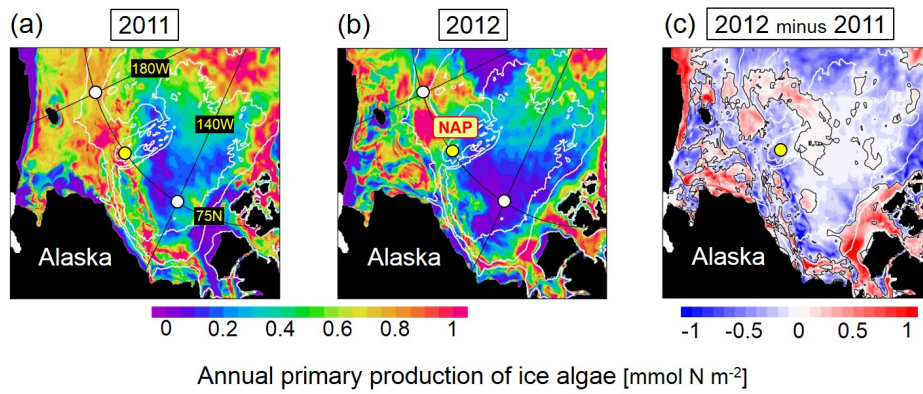


Fig. 5.

C4321

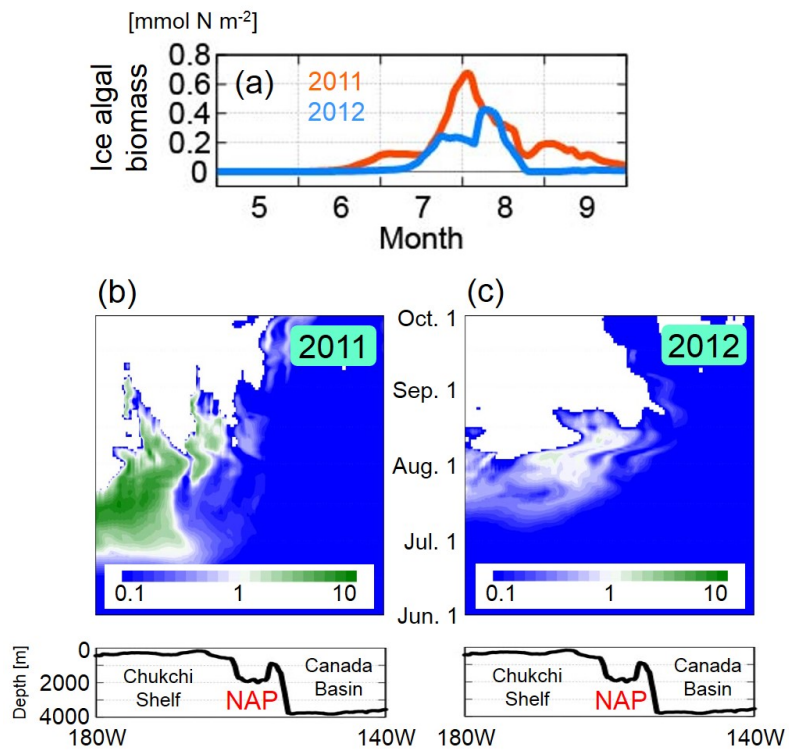


Fig. 6.

C4322

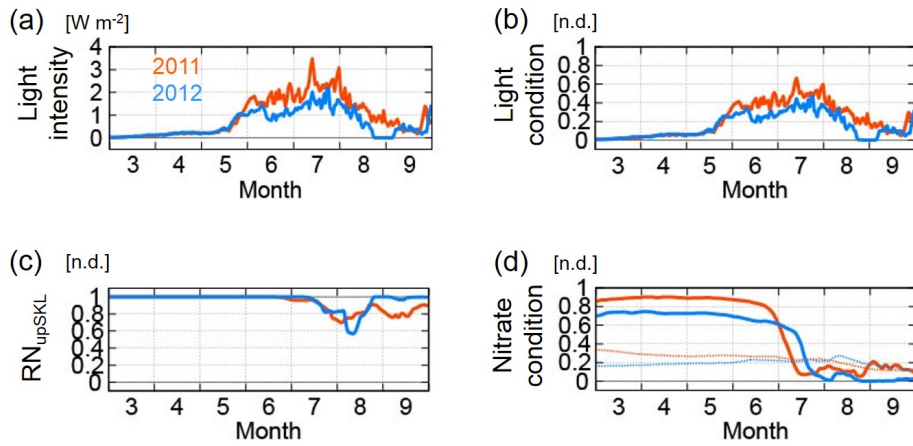


Fig. 7.

C4323

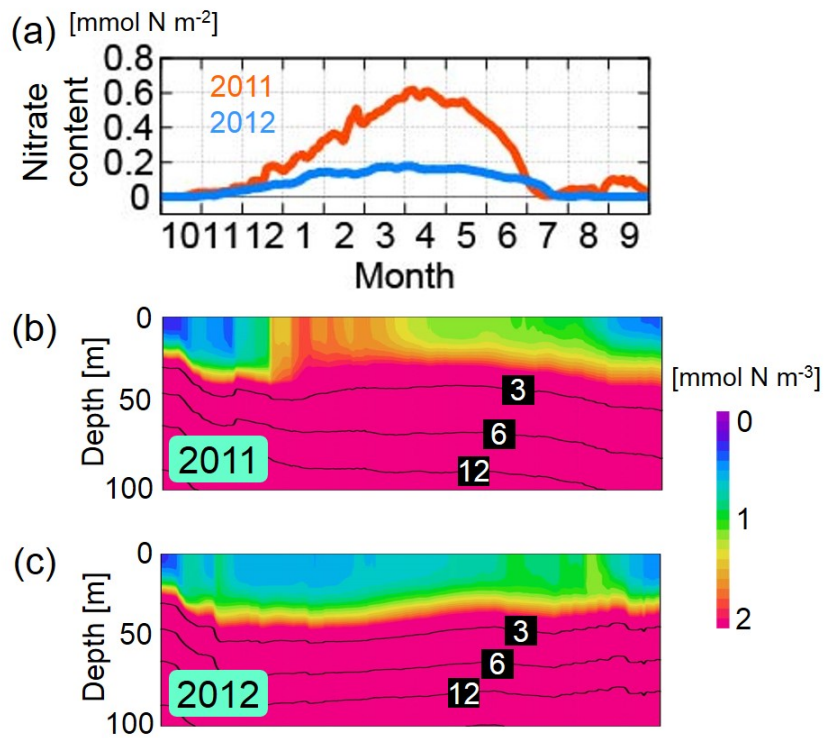


Fig. 8.

C4324

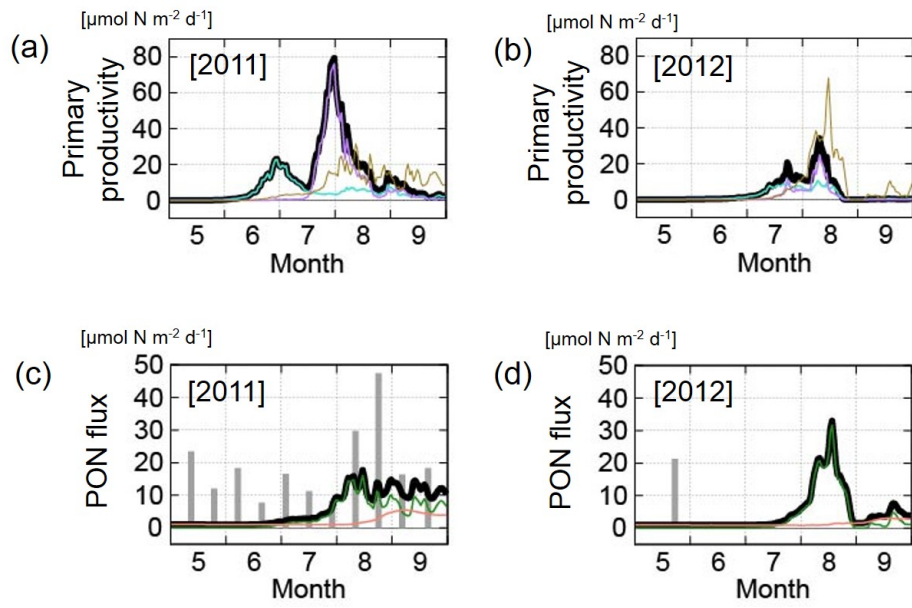


Fig. 9.

C4325

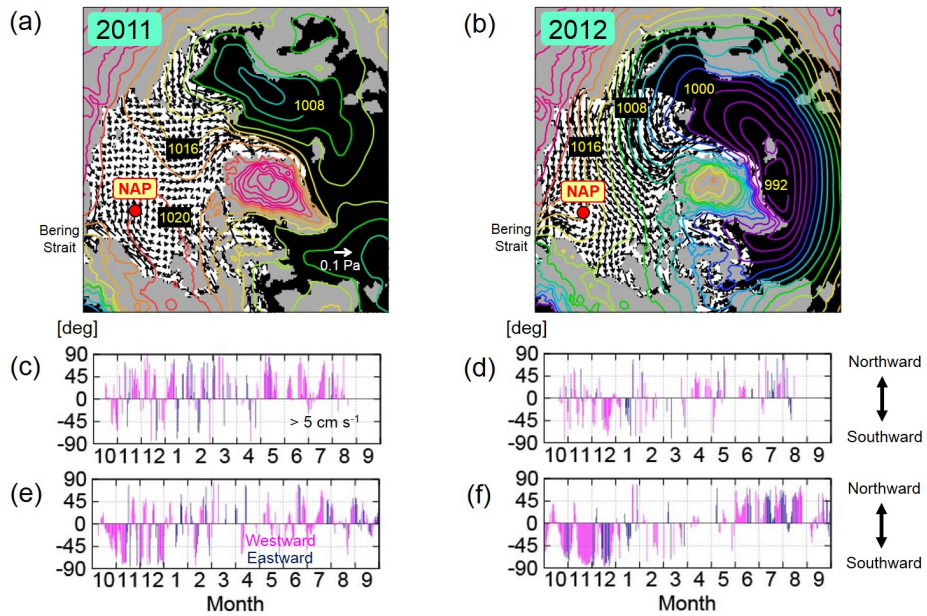


Fig. 10.

C4326

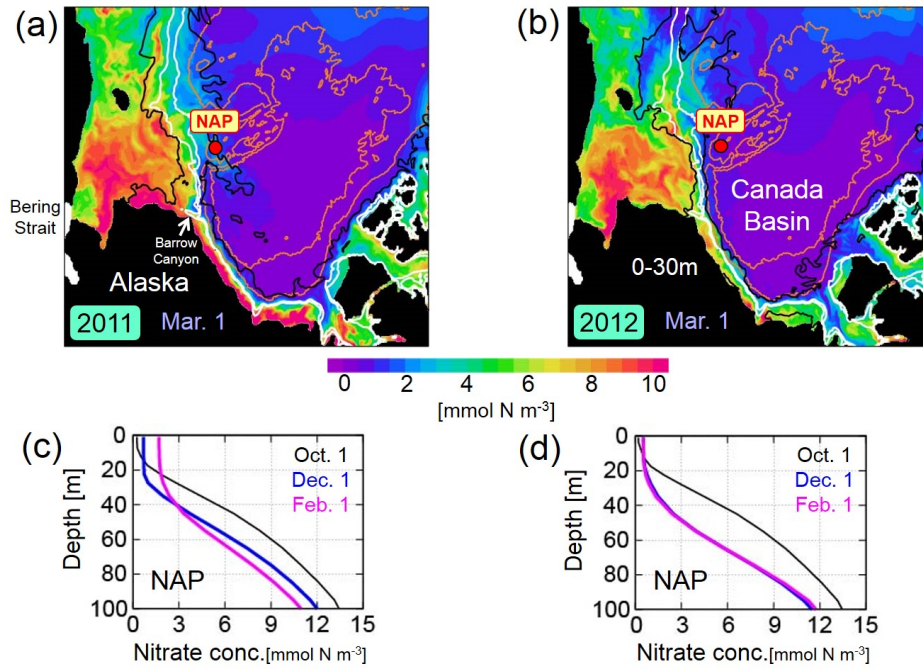


Fig. 11.

C4327

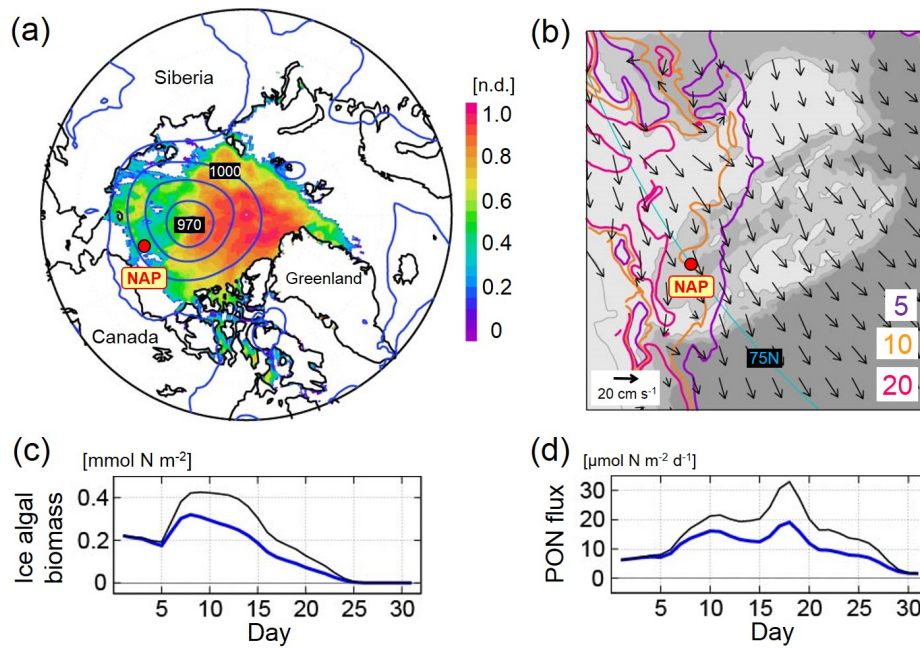


Fig. 12.

C4328

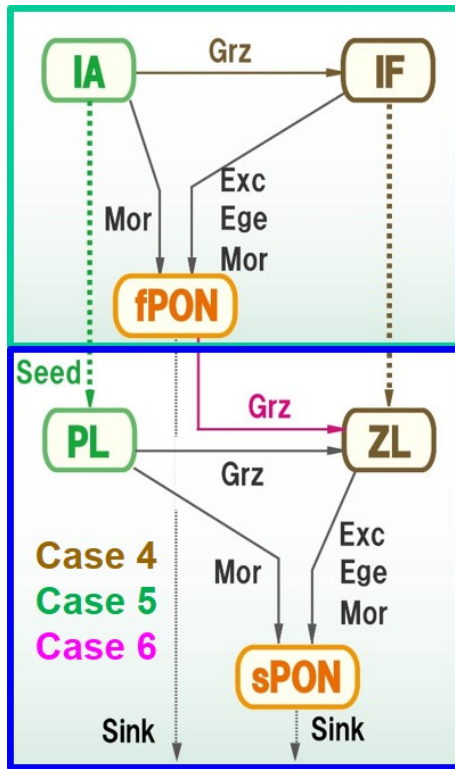


Fig. 13.

C4329

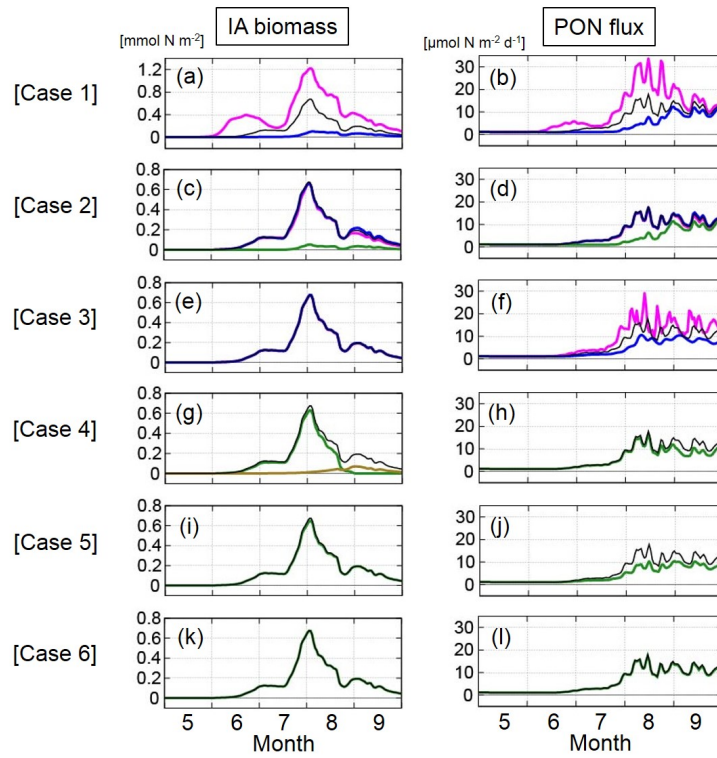


Fig. 14.

C4330