

Interactive comment on “Structural and functional study of the nematode community from the Indian western continental margin with reference to habitat heterogeneity and oxygen minimum zone” by R. Singh and B. S. Ingole

J Ingels (Referee)

jein@pml.ac.uk

Received and published: 17 September 2015

Dear Ravail and Baban, Thank you for your corrections. It would be great if I could see a revised version of the text. I guess this will be posted after the comments of all reviewers have been integrated. In the meantime, I really do think that a better effort should be made with the schematic model. The revised version you integrated in the comment is a mere improvement in terms of resolution, rather than clarity of ideas behind the thinking. I have taken the liberty to create a preliminary scheme based on your data in the paper, which I think is visually a more attractive and more readily

C5498

interpretable version. I do hope you don't mind my interference, but as mentioned before, I think it is a very valuable diagram and source of discussion in the MS. I do not have a problem if you would like to use this to base new versions on. It is merely a visual alteration of your ideas and data in the first place. I am happy to revise/comment or assist further. Best wishes,

Interactive comment on Biogeosciences Discuss., 12, 11537, 2015.

C5499

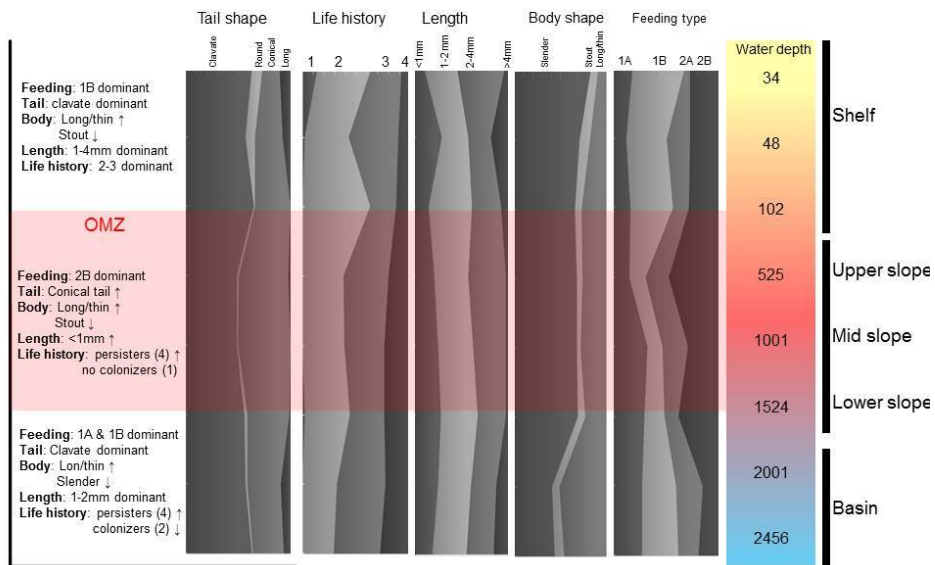


Fig. 1. Schematic model of functional nematode characteristics in- and outside the OMZ. Area panels for each characteristic are based on relative abundance totalling 100%