

***Interactive comment on* “Structural and functional study of the nematode community from the Indian western continental margin with reference to habitat heterogeneity and oxygen minimum zone” by R. Singh and B. S. Ingole**

J Ingels (Referee)

jein@pml.ac.uk

Received and published: 17 September 2015

Dear Ravail and Baban, Thank you for your corrections. It would be great if I could see a revised version of the text. I guess this will be posted after the comments of all reviewers have been integrated. In the meantime, I really do think that a better effort should be made with the schematic model. The revised version you integrated in the comment is a mere improvement in terms of resolution, rather than clarity of ideas behind the thinking. I have taken the liberty to create a preliminary scheme based on your data in the paper, which I think is visually a more attractive and more readily

C5498

Full Screen / Esc

Printer-friendly Version

Interactive Discussion

Discussion Paper



interpretable version. I do hope you don't mind my interference, but as mentioned before, I think it is a very valuable diagram and source of discussion in the MS. I do not have a problem if you would like to use this to base new versions on. It is merely a visual alteration of your ideas and data in the first place. I am happy to revise/comment or assist further. Best wishes,

Interactive comment on Biogeosciences Discuss., 12, 11537, 2015.

BGD

12, C5498–C5500, 2015

Interactive
Comment

Full Screen / Esc

Printer-friendly Version

Interactive Discussion

Discussion Paper

C5499



Interactive
Comment

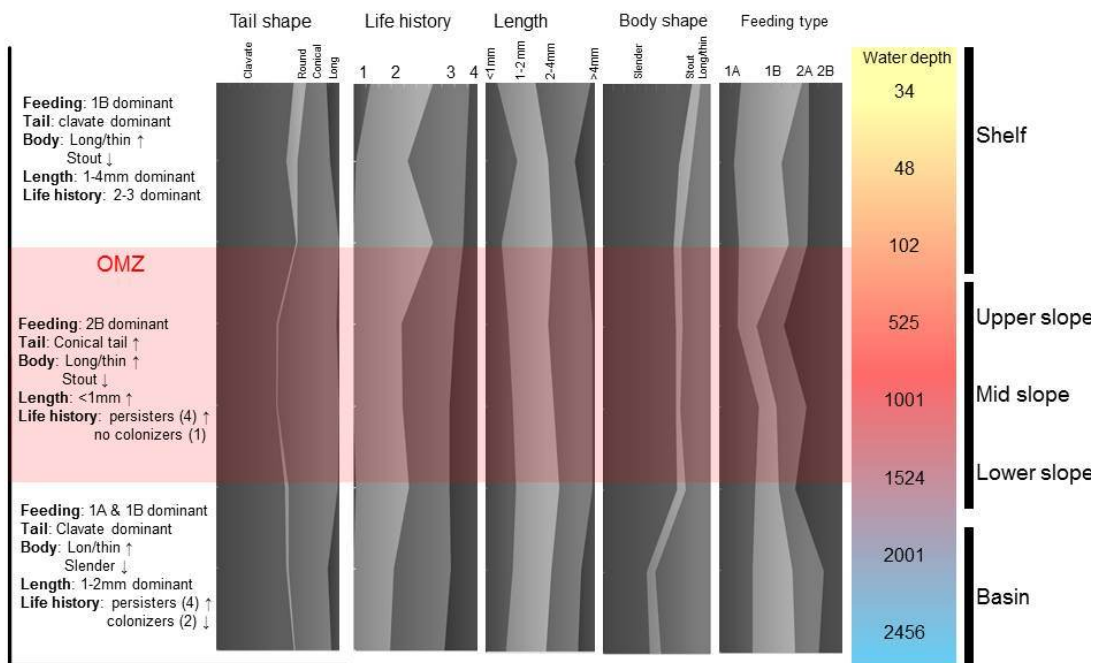


Fig. 1. Schematic model of functional nematode characteristics in- and outside the OMZ. Area panels for each characteristic are based on relative abundance totalling 100%

Full Screen / Esc

Printer-friendly Version

Interactive Discussion

Discussion Paper

