

***Interactive comment on “The potential effects of fresh water content on the primary production in the Chukchi Sea” by M. S. Yun et al.***

**M. S. Yun et al.**

misunyun@pusan.ac.kr

Received and published: 31 December 2015

Dear anonymous referee #3,

Thank you very much for the very constructive comments. We revised the manuscript. All of my response comments are listed and uploaded as a supplementary material.

Best regards, Corresponding author: Sang H. Lee

Please also note the supplement to this comment:  
<http://www.biogeosciences-discuss.net/12/C8772/2015/bgd-12-C8772-2015-supplement.pdf>

---

C8772

Interactive comment on Biogeosciences Discuss., 12, 13511, 2015.

C8773

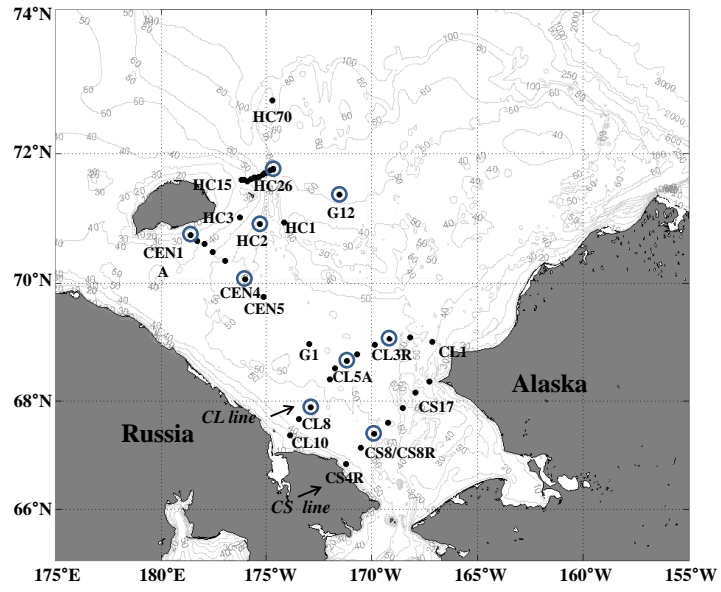


Fig. 1. Figure 1\_Yun et al.

C8774

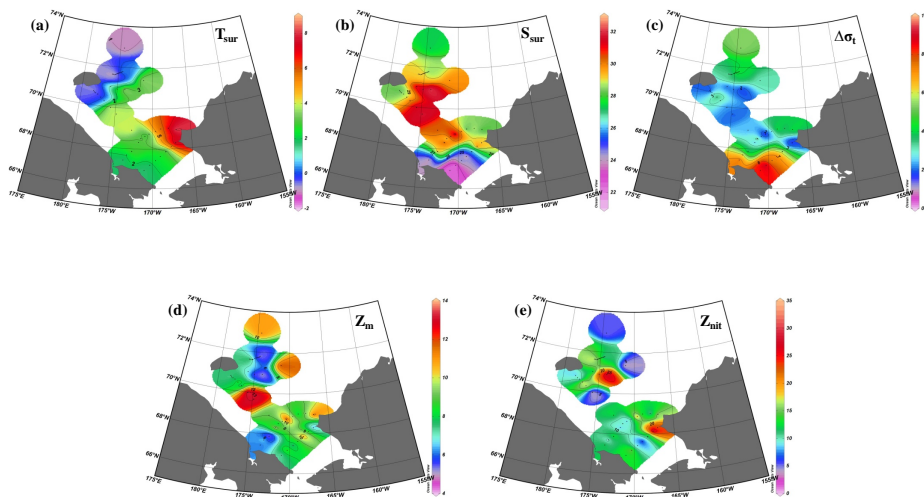


Fig. 2. Figure 2\_Yun et al.

C8775

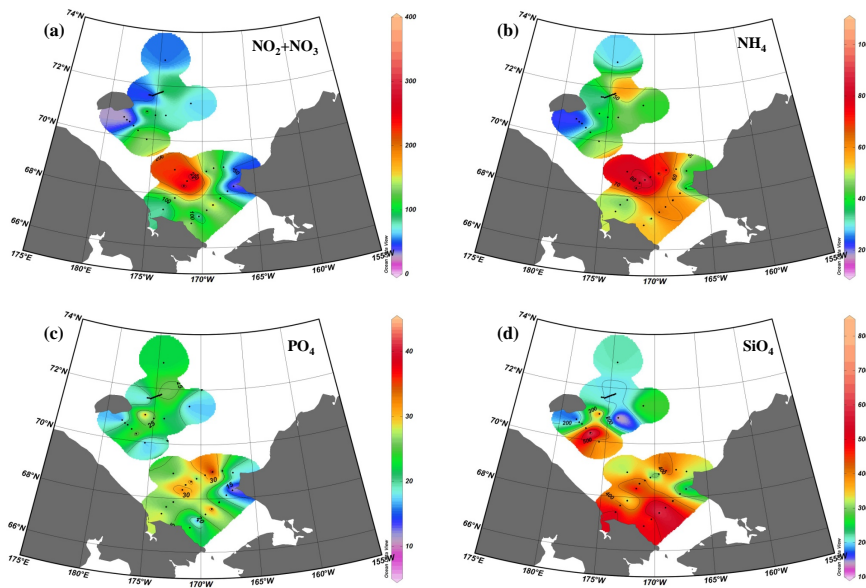


Fig. 3. Figure 3\_Yun et al.

C8776

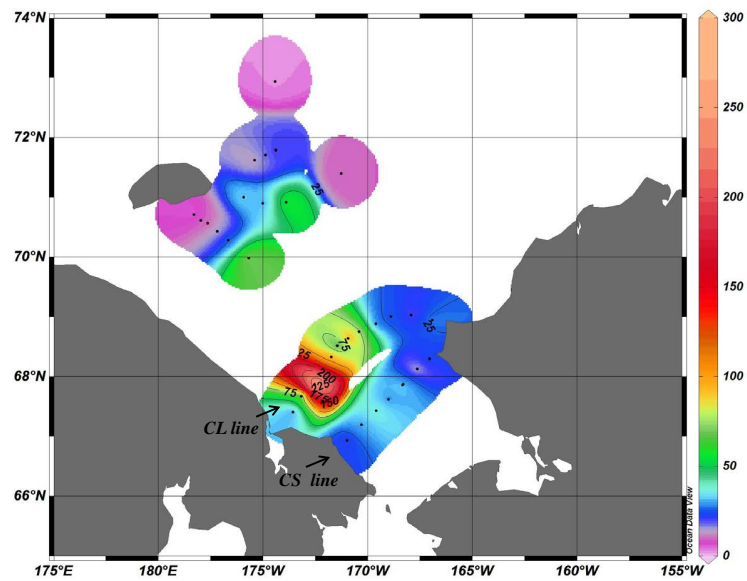


Fig. 4. Figure 4\_Yun et al.

C8777

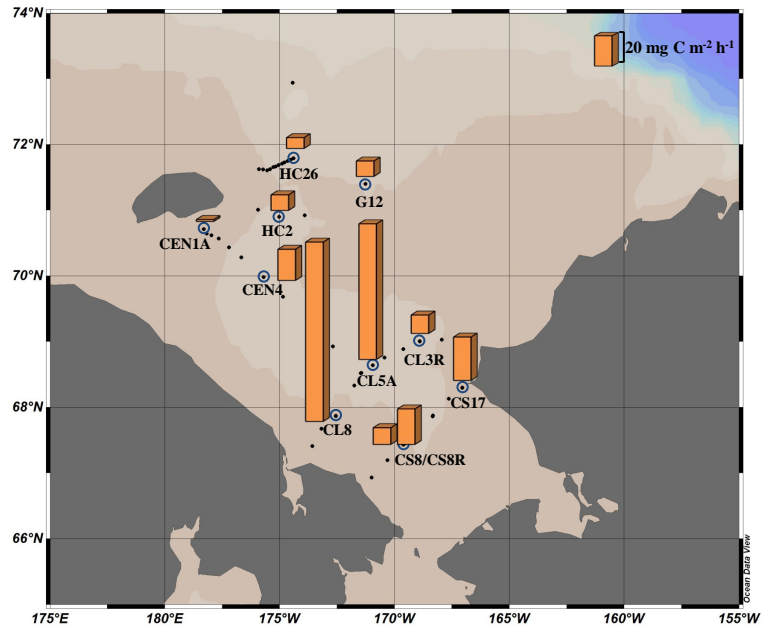


Fig. 5. Figure 5\_Yun et al.

C8778

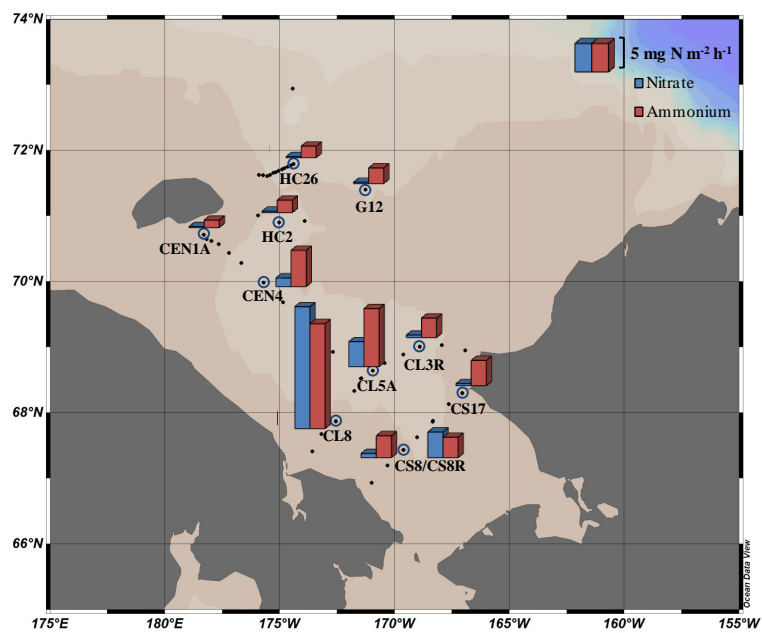


Fig. 6. Figure 6\_Yun et al.

C8779

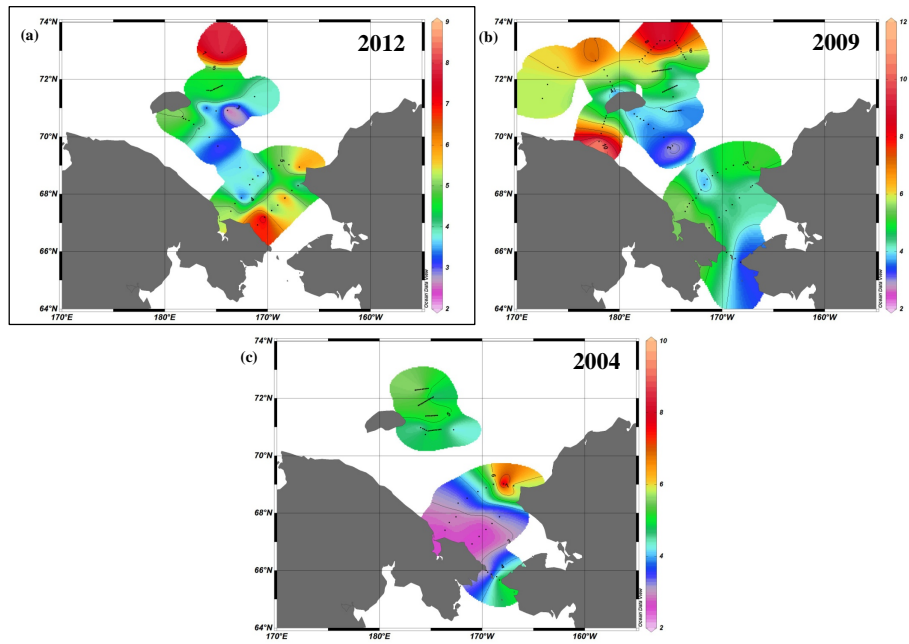


Fig. 7. Figure 7\_Yun et al.

C8780

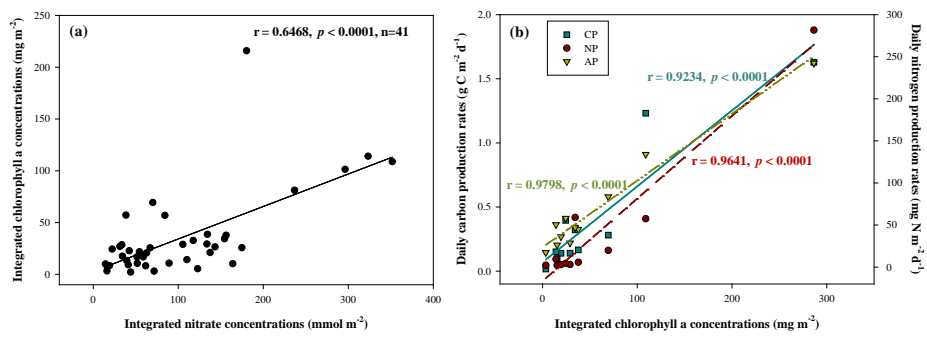


Fig. 8. Figure 8\_Yun et al.

C8781

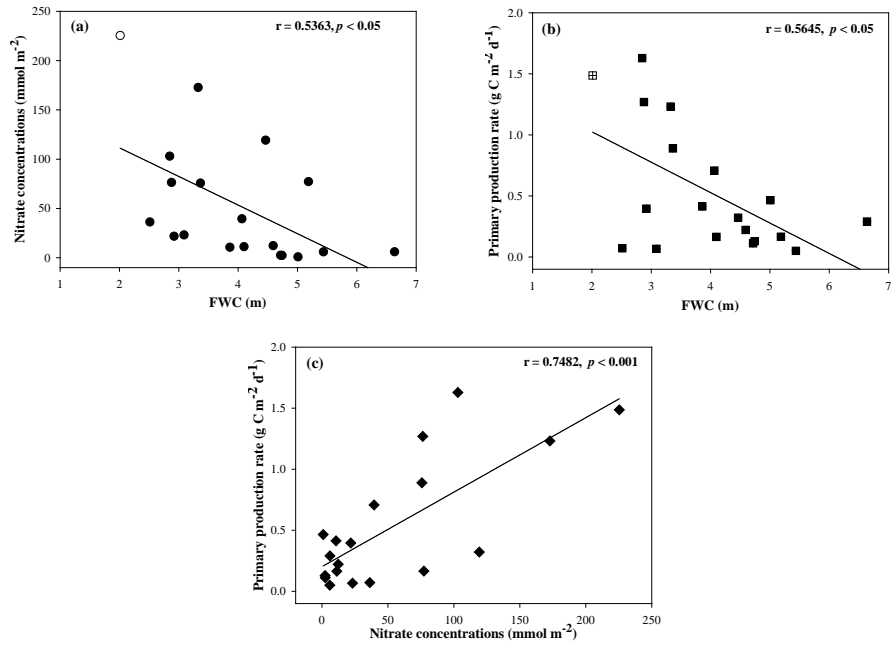


Fig. 9. Figure 9\_Yun et al.

C8782

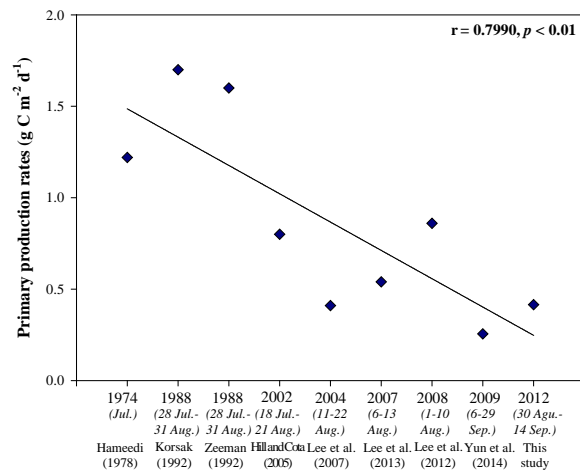


Fig. 10. Figure 10\_Yun et al.

C8783