

Interactive comment on “Net global warming potential and greenhouse gas intensity in rice agriculture driven by high yields and nitrogen use efficiency: a 5 year field study” by X. Zhang et al.

X. Zhang et al.

zqxiong@njau.edu.cn

Received and published: 9 February 2016

We attached separately for the revised Figures. Thank you for your great support!

Interactive comment on Biogeosciences Discuss., 12, 18883, 2015.

Full Screen / Esc

Printer-friendly Version

Interactive Discussion

Discussion Paper

Interactive
Comment

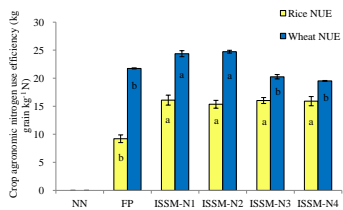


Fig. 1. Figure 1

Full Screen / Esc

Printer-friendly Version

Interactive Discussion

Discussion Paper



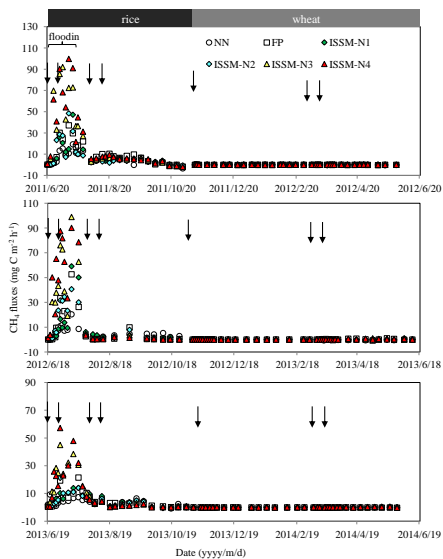


Fig. 2. Figure 2

Full Screen / Esc

Printer-friendly Version

Interactive Discussion

Discussion Paper



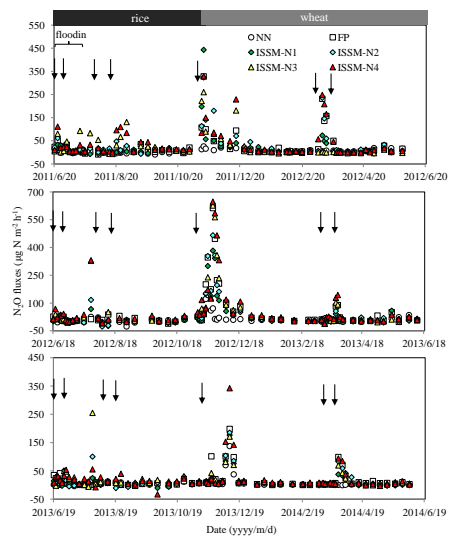


Fig. 3. Figure 3

Full Screen / Esc

Printer-friendly Version

Interactive Discussion

Discussion Paper



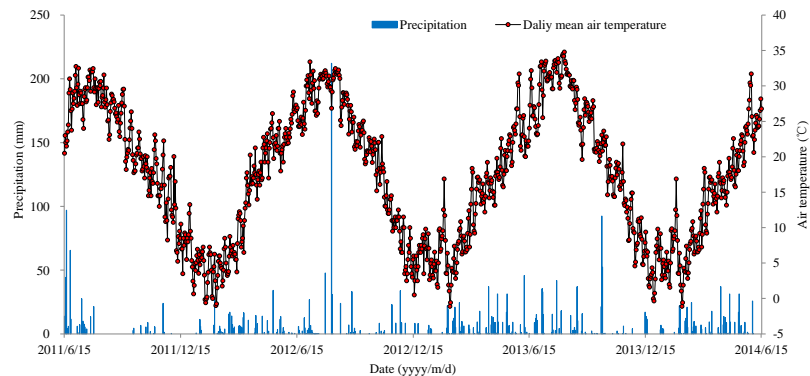
Interactive
Comment

Fig. 4. Supplementary fig

[Full Screen / Esc](#)[Printer-friendly Version](#)[Interactive Discussion](#)[Discussion Paper](#)