

Interactive comment on “Net global warming potential and greenhouse gas intensity in rice agriculture driven by high yields and nitrogen use efficiency: a 5 year field study” by X. Zhang et al.

X. Zhang et al.

zqxiong@njau.edu.cn

Received and published: 9 February 2016

we attached seperately the revised figures for your comments. Thank you very much for your great support!

Interactive comment on Biogeosciences Discuss., 12, 18883, 2015.

Full Screen / Esc

Printer-friendly Version

Interactive Discussion

Discussion Paper



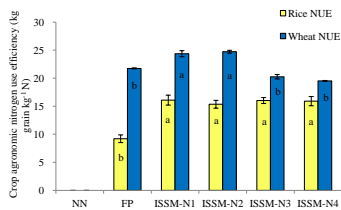
[Interactive
Comment](#)

Fig. 1. Figure 1

[Full Screen / Esc](#)[Printer-friendly Version](#)[Interactive Discussion](#)[Discussion Paper](#)

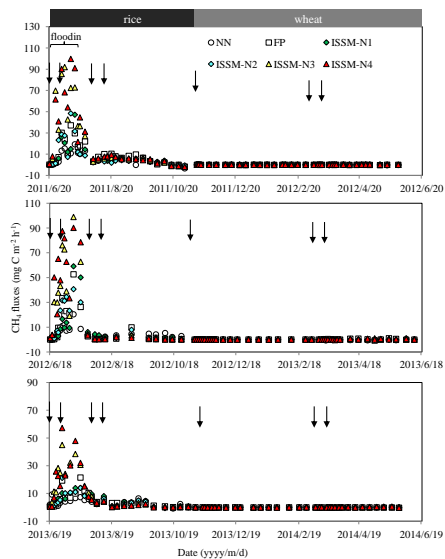


Fig. 2. Figure 2

Full Screen / Esc

Printer-friendly Version

Interactive Discussion

Discussion Paper



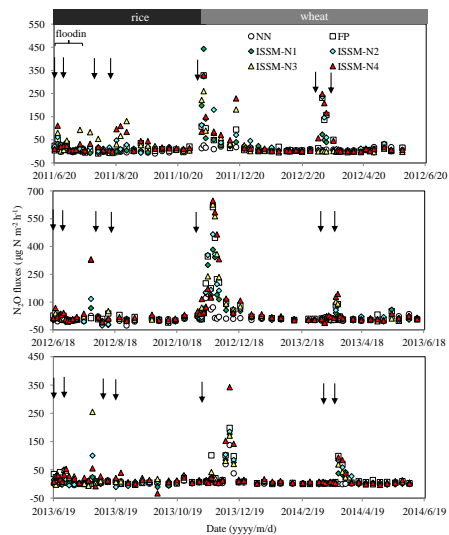


Fig. 3. Figure 3

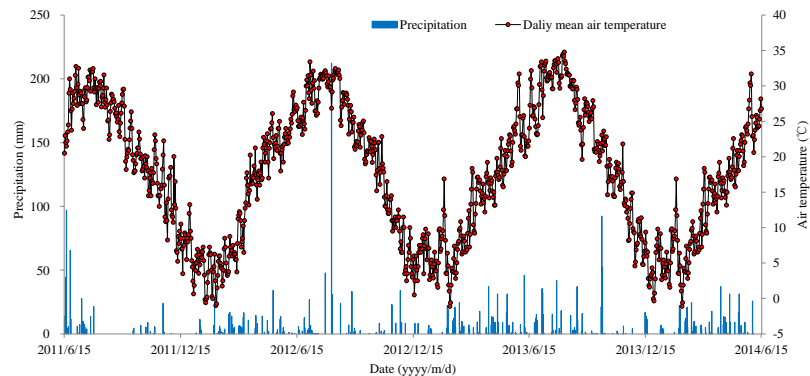
Full Screen / Esc

Printer-friendly Version

Interactive Discussion

Discussion Paper



Interactive
Comment**Fig. 4.** Supplementary Fig[Full Screen / Esc](#)[Printer-friendly Version](#)[Interactive Discussion](#)[Discussion Paper](#)