

Biogeosciences Discussions is the access reviewed discussion forum of *Biogeosciences*

**On the trophic regimes of the
Mediterranean Sea**

F. D’Ortenzio and
M. Ribera d’Alcalà

On the trophic regimes of the Mediterranean Sea: a satellite analysis

F. D’Ortenzio¹ and M. Ribera d’Alcalà²

¹Laboratoire d’Oceanographie de Villefranche, Université Pierre et Marie Curie et CNRS
Villefranche sur Mer, France

²Laboratorio di Oceanografia Biologica, Stazione Zoologica “A. Dohrn”, Villa Comunale,
Napoli, Italia

Received: 15 May 2008 – Accepted: 2 July 2008 – Published: 25 July 2008

Correspondence to: F. D’Ortenzio (dortenzio@obs-vlfr.fr)

Published by Copernicus Publications on behalf of the European Geosciences Union.

Title Page

Abstract

Introduction

Conclusions

References

Tables

Figures



Back

Close

Full Screen / Esc

Printer-friendly Version

Interactive Discussion

Abstract

The ten years of the SeaWiFS satellite surface chlorophyll concentration observations, presently available, were used to characterize the biogeography of the Mediterranean Sea and the seasonal cycle of the surface biomass in different areas of the basin.

5 The K-means cluster analysis was applied on the satellite time-series of chlorophyll concentration. The resulting coherent patterns were then explained on the basis of the present knowledge of the basin functioning. Winter biomass enhancements were shown to occur in most of the basin and last for 2–3 months depending on the region. Classical spring bloom regimes were also observed, regularly in the North Western
10 Mediterranean, and intermittently in four others specific areas. The analysis confirmed that the Mediterranean Sea is an ideal area to evaluate the impacts of the external physical forcing on the marine ecosystem functioning.

1 Introduction

In spite of its limited size ($\sim 0.7\%$ of the global ocean in surface, $\sim 0.25\%$ in volume),
15 the Mediterranean Sea is considered one of the most complex marine environments on the Earth, because of the variety and scale of physical processes occurring there, such as deep water formation, thermohaline circulation, sub-basins gyres etc. (Pinardi and Masetti, 2000). With regards to its bio-geochemical functioning, the picture is supposed to be relatively more simple (IOC, 1999).

20 The Mediterranean is classified as an oligotrophic basin (Sournia, 1973), as its primary production by autotrophs is generally weak and chlorophyll concentration in the open ocean areas rarely exceeds $2\text{--}3\text{ mg/m}^3$. Its phytoplankton seasonal dynamics has been reported to prevalently follow a typical temperate cycle, with biomass increase in late winter/early spring and very low values in summer. Historically, this typical mid-latitudinal seasonality has been regularly observed at the long term open sea
25 station (DYFAMED) located in the NW part of the basin, over approximately 20 years

BGD

5, 2959–2983, 2008

On the trophic regimes of the Mediterranean Sea

F. D'Ortenzio and
M. Ribera d'Alcalà

Title Page

Abstract

Introduction

Conclusions

References

Tables

Figures

⏪

⏩

◀

▶

Back

Close

Full Screen / Esc

Printer-friendly Version

Interactive Discussion

of measurements at the site (Marty et al., 2002). Such pattern has been subsequently confirmed by the analysis of ocean color observations conducted in two different periods, by the CZCS (1979–1985) and the SeaWiFS (1997–2001) sensors (Morel and Andre, 1991; Antoine et al., 1995; Bosc et al., 2005). As for spatial distributions, the dominant feature that emerged was a basin-scale east-west gradient in the chlorophyll distribution, which reinforced the paradigm of an extremely oligotrophic Eastern basin and a more productive Western side.

More specifically, the outcome of the satellite-based studies can be summarized as follows (Morel and Andre, 1991; Antoine et al., 1995; Bosc et al., 2005):

1. High Chlorophyll-*a* values over large areas are rarely detected in the basin, with the exception of a large bloom observed in the Liguro-Provencal Region.
2. Areas with pronounced phytoplankton blooms are geographically well localized. However, these chlorophyll enhancements exhibit different amplitude and duration over the years.
3. Phytoplankton biomass increase appears to be strongly coupled to physical forcing, which induces locally favorable conditions for phytoplankton growth.
4. Among the forcings, wind is considered to be the most relevant factor in inducing build-up of phytoplankton biomass, together with the presence of cyclonic structures. An exception is the bloom in the predominantly anticyclonic Alboran Sea, where the mesoscale dynamics, associated with the inflow of Atlantic water, plays a major role.
5. More confined high biomass spots are located near the coasts, especially when proximal to large river mouths.

These observations captured the main features of the phytoplankton dynamics in the basin and the relevant events ruling them. Exploiting the potentiality of the space-based data, they contributed to give a general picture of the basin and to characterize

On the trophic regimes of the Mediterranean Sea

F. D’Ortenzio and
M. Ribera d’Alcalá

[Title Page](#)[Abstract](#)[Introduction](#)[Conclusions](#)[References](#)[Tables](#)[Figures](#)[Back](#)[Close](#)[Full Screen / Esc](#)[Printer-friendly Version](#)[Interactive Discussion](#)

the areas where the blooms are observed. However, these studies paid less attention to the coherence/incoherence of the patterns in the amplitude and phase of those events. Seasonal cycles and spatial distributions were often discussed separately, and comparisons among the temporal evolutions of different regions were often lacking. In fact, time series from remote sensing observations were usually calculated by averaging the pixels of a specific image, on a given portion of the study area. This portion is generally defined on geographical (i.e. a sub-basin) or purely geometric (i.e. a square) basis. This approach is satisfactory when the studied area is strongly homogeneous and when its main features are weakly variable (i.e. they do not change location with time). Otherwise, the interpretation of the time series can be extremely hard and not really instructive.

The analysis of the seasonal patterns of the chlorophyll concentration, also in their geographical repartitions, is in fact a way to infer on the “internal” mechanisms driving the whole ecosystem functioning. In his seminal synthesis on the “Ecological geography of the Sea”, Longhurst (2006) categorized different regions of the global ocean as belonging to specific provinces. This classification was based on phytoplankton biomass patterns, as derived from remote sensing data, together with observations on the grazing and on the mixed layer evolution. Each province of Longhurst regionalization differed from the others in that it displayed a different seasonal cycle of phytoplankton. In his study, the main features of the Mediterranean and the Black Seas (MEDI system) were described very synthetically. The whole basin was classified as following a dynamic defined “Subtropical Nutrient-Limited, winter-spring production period”. In brief, during summer, the density stratification inhibits the flux of nutrients towards the surface layer, preventing autotrophic biomass accumulation in the surface layer. In contrast, in late fall-winter, the upward mixing of underlying nutrients permits a slight but constant increase of biomass, as the depth averaged irradiance in the mixed layer is sufficient to support net growth.

In synthesis, previous works demonstrated that the Mediterranean is a complicated system, which hosts different regimes in a relatively small spatial extension. A way to

On the trophic regimes of the Mediterranean SeaF. D’Ortenzio and
M. Ribera d’Alcalà

[Title Page](#)[Abstract](#)[Introduction](#)[Conclusions](#)[References](#)[Tables](#)[Figures](#)[Back](#)[Close](#)[Full Screen / Esc](#)[Printer-friendly Version](#)[Interactive Discussion](#)

characterize these regimes is the study of the seasonal cycles of the surface biomass and of their spatial distribution (“biogeography”). The only study dealing with this topic in the Mediterranean was the global analysis performed by Longhurst (2006), which, however, considered the Mediterranean basin as whole. In addition, the quality of the satellite data that he used (the climatological monthly CZCS maps at 1° resolution) did not allow an appropriate characterization of oceanic regions as the Mediterranean, where the temporal and spatial scales are small compared with those of the global ocean. The ten years (1997–2007) of SeaWiFS observations presently available offer the opportunity to better deal with the issue, constituting a coherent, systematic and good-quality ocean color data set.

In this paper, we propose a detailed analysis of the surface chlorophyll seasonal cycle in different areas and sub-areas of the Mediterranean Sea, based on the SeaWiFS satellite data. We pursue two main objectives:

1. to objectively identify regions of the Mediterranean Sea with similar patterns in the seasonal time course of surface chlorophyll concentration (“regionalization”). We make the assumption that similar/different seasonality of surface biomass reflects similar/different mechanisms driving the functioning of the ecosystem.
2. to formulate hypotheses to interpret the observed patterns (and the associated “regions”) which, even when speculative, may help better address future studies on the Mediterranean Sea.

2 Data and methods

Ten years (1997–2007) of SeaWiFS ocean color observations of the surface chlorophyll concentration are presently available, at different temporal and spatial resolutions (McClain et al., 2004). In this study, we used the reduced resolution (i.e. 18 Km) Global Area Coverage 8-days and daily products. Data were downloaded from NASA website, and remapped on an equirectangular grid on the Mediterranean area (–6 to 36° E and

BGD

5, 2959–2983, 2008

On the trophic regimes of the Mediterranean Sea

F. D’Ortenzio and
M. Ribera d’Alcalá

Title Page

Abstract

Introduction

Conclusions

References

Tables

Figures



Back

Close

Full Screen / Esc

Printer-friendly Version

Interactive Discussion



30 to 46° N). Black Sea was masked, as its dynamics follows an independent regime and was then considered decoupled from the rest of the basin (e.g., Oguz et al., 2004).

In the Mediterranean Sea, ocean color data are affected by a calibration problem. Several studies pointed out that the bio-optical response of the Mediterranean waters is anomalous respect to other oceanic regions having similar ranges of chlorophyll (Claustre et al., 2002; D'Ortenzio et al., 2001; Bosc et al., 2004; Volpe et al., 2007). As a consequence, chlorophyll concentrations retrieved from remote sensing data through standard bio-optical algorithms, display a relevant bias when compared to in situ observations. The bias (about 30% on the average) is particularly relevant in the lower range of the chlorophyll concentrations, where errors produced by the standard algorithms could attain 150% of the in situ value. Several regional algorithms have been proposed (D'Ortenzio et al., 2001; Bosc et al., 2004; Volpe et al., 2007), although the real causes of the bias have not yet been determined. In addition, some recent studies pointed out an interannual variability of the anomaly, thus questioning the common assumption of its constancy (Antoine et al., 2007).

In this study, we decided to utilize the NASA standard algorithm (OC4V4, O'Reilly, 1998), as we focused on the seasonal and interannual evolution of phytoplankton biomass and its spatial structure in the different areas of the basin, i.e., on relative changes more than on absolute quantities. To further reduce any possible bias due to the algorithm, the results presented in what follows will be based on normalized data, obtained dividing the time series or the maps by their maximum value. The scope of this approach is twofold: 1) errors in values became of second order, 2) time series and maps, despite the wide range of chlorophyll concentrations spanned in different areas and seasons (chlorophyll distributions are generally log-normal), can be more easily compared.

Another important point concerning the use of satellite data is that ocean color observations are limited to the first optical depth, which in Mediterranean is of about 15–35 m on average. They can then miss some important features of the 3-D biomass field (i.e. the sub-surface chlorophyll maximum). Our analysis, and the results obtained, re-

On the trophic regimes of the Mediterranean SeaF. D'Ortenzio and
M. Ribera d'Alcalá

[Title Page](#)[Abstract](#)[Introduction](#)[Conclusions](#)[References](#)[Tables](#)[Figures](#)[Back](#)[Close](#)[Full Screen / Esc](#)[Printer-friendly Version](#)[Interactive Discussion](#)

fer only to the satellite chlorophyll, i.e., the upper layer, but considering the high correlation existing between the depth integrated and the satellite chlorophyll this should minimally affect our conclusions (Morel and Berthon, 1989, but see also Sathyendranath and Platt, 1989 for an in depth analysis of the possible errors).

Two types of analysis were conducted on satellite data, following two different approaches.

In the first analysis, we chose a synthetic representation of time and space variations of the biomass field, i.e. a Hovmöller diagram. On the basis of the main results obtained by Bosc et al. (2004) we extracted, from the whole data base of 8-days SeaWiFS maps, one zonal and three meridional transects, which encompass the most representative areas of the different sub-basins (Fig. 1, over-imposed on the climatological average of SeaWiFS observations). For each 8-days transect, data were normalized by dividing the absolute values of chlorophyll concentrations by the specific absolute maximum of the transect. This allowed displaying the spatio-temporal variability of the biomass in a very compact way over the whole 10 years and verifying whether previous findings were confirmed over a longer time interval.

In the second analysis, using the daily SeaWiFS maps, a weekly climatological time series (i.e. averaging all the first weeks, all the second weeks, etc.) of the chlorophyll concentration was generated for each pixel of the basin. The resulting climatological time-series was then normalized by the maximum values of each specific cell. A cluster K-means analysis (Hartigan and Wong, 1979) was then carried out on the normalized climatology, in order to statistically organize the time-series and to create clusters representing regions of similarity. The number of clusters, imposed a priori in the K-means analysis, was decided on the basis of four specific tests (Milligan and Cooper, 1985) conducted on the data set of satellite images. The four tests (Calinski and Harabasz, 1974; Hartigan, 1975; Ball and Hall, 1965; Ratwosky and Lance, 1978) are based on a series of significant indexes, which measure the dispersion of the data points in a cluster and between the clusters. The optimal number of clusters for a specific data set is obtained when the value of a given index remains unaltered for the increasing number

On the trophic regimes of the Mediterranean SeaF. D'Ortenzio and
M. Ribera d'Alcalá

[Title Page](#)[Abstract](#)[Introduction](#)[Conclusions](#)[References](#)[Tables](#)[Figures](#)[⏪](#)[⏩](#)[◀](#)[▶](#)[Back](#)[Close](#)[Full Screen / Esc](#)[Printer-friendly Version](#)[Interactive Discussion](#)

of clusters. The values of these indexes were calculated for the SeaWiFS normalized data set spanning the number of clusters between 2 and 25. The four tests gave three times the value of 7 (Hartigan, Calinski and Harabasz, and Ratwosky and Lance tests) and once the value of 8 (Ball and Hall). We then decided to keep the value of 7.

5 The rationale for performing a clustering is twofold. Firstly, to produce a more compact picture, condensing the temporal and spatial variations of the surface chlorophyll concentration in a unique statistical framework. Secondly, to produce an objective regionalization of the Mediterranean based on the similarities between seasonal cycles. A recent contribution by Devred et al., 2007 already explored this approach, although
10 it was based on the spatial coherence of different parameters (i.e; Chl-*a* and SST).

3 Results

3.1 Zonal and meridional patterns of the distribution of the biomass in the upper layer

Figure 1 shows the climatological mean of chlorophyll concentration, as derived by taking the average of the 10 years of SeaWiFS observations. The distribution appears
15 very similar to that obtained by Bosc et al. (2004) using 4 years of data (September 1997–December 2001), although their absolute values are slightly higher, as a consequence of the specific Mediterranean bio-optical algorithm applied by Bosc et al. (2004). Based on the chlorophyll distribution of Fig. 1, the four transects (see above) have been selected.

20 Figure 2 shows the East-West distribution of the Mediterranean normalized biomass in the years 1997–2007. The significant difference in the surface biomass concentration (approximately a factor of 4 on the average) between the Western and the Eastern sides is clearly evident in the diagram, and confirms the analysis proposed by Bosc et al. (2004) over the period 1997–2001. The W-E difference does not follow a smooth
25 gradient but exhibits a sharp decline at the straits of Sicily (see Fig. 1 for the indication of geographical regions cited in the text). The ratio between maxima and minima of

BGD

5, 2959–2983, 2008

On the trophic regimes of the Mediterranean Sea

F. D'Ortenzio and
M. Ribera d'Alcalá

Title Page

Abstract

Introduction

Conclusions

References

Tables

Figures

⏪

⏩

◀

▶

Back

Close

Full Screen / Esc

Printer-friendly Version

Interactive Discussion

On the trophic regimes of the Mediterranean SeaF. D'Ortenzio and
M. Ribera d'Alcalà

[Title Page](#)[Abstract](#)[Introduction](#)[Conclusions](#)[References](#)[Tables](#)[Figures](#)[⏪](#)[⏩](#)[◀](#)[▶](#)[Back](#)[Close](#)[Full Screen / Esc](#)[Printer-friendly Version](#)[Interactive Discussion](#)

biomass is up to 10 in the Western basin and it is generally lower than 5, at most, in the Eastern side. The biomass maxima are all centered in the Western basin, at the beginning of the year, with some early starts in November–December and rare extension beyond early spring (always observed in the Alboran region; longitudinal band -5° – 0° W). This pattern is persistent all year round, and shows a small, but significant, interannual variability. In the Eastern basin, the lowest values are observed during the summer period, from May to September, whereas biomass increases are observed in winter. In summer, the gradient between the Eastern and Western basins is much weaker, recurrently over the 10 years of observations, with the notable exception of the Alboran region.

The westernmost meridional transect reported in Fig. 3a shows the striking buildup of biomass in the North Western Mediterranean area (latitude $>41^{\circ}$ N), which was often observed from space (Morel et André, 1991; Bosc et al., 2004). The timing of the bloom follows a four phase pattern: an initial increase in winter (November–December), followed by a slight decrease in the first months of the year and by the development of the annual maximum in early spring and a final decay in late spring/early summer. While the above pattern is recurrently observed along the ten years, the interannual variability plays an important role in modifying the amplitude of the four phases. In addition, the bloom maximum in the North is slightly delayed respect to the increase in the southern part of the transect (latitudinal band $<38^{\circ}$ N), as also evident in Fig. 2 (longitudinal band 5° – 10° W). In fact, the timing of the southern bloom and of most of the occidental basin (see Fig. 2), corresponds to the decrease observed in the northern area (phase 2 of the North Western Mediterranean bloom).

The second meridional transect extends from the southern Adriatic to the Gulf of Sirte, (Fig. 3b). Here, the north-south gradient is much steeper, with a sharp decrease in the Northern Ionian (about 37° – 38° N). The upper part (about 41° – 42° N) encompasses the southern Adriatic gyre, where maxima of the transect are located. They correspond to a recurrent bloom, (already observed by Gacic at al., 2002 and Santoleri et al., 2003), which starts around mid-March and lasts until April. The pattern recurs

over the years with a significant interannual variability. In some years, the bloom is strongly weakened or absent (i.e., 2001). Moving southward, the transect crosses the Ionian Sea, which is characterized by a weak N-S gradient in biomass. Annual maxima occur everywhere in late winter (January–February) and minima in summer. A two- to threefold increase in biomass spans over a period of 4–6 months in the Northern Ionian (38°–40° N) with a significant interannual variability in the timing of the start (up to one month). The southern region (lat <38° N) parallels both the timing and the magnitude of the increase but with lower values of minima and maxima. In other words, the time course of phytoplankton biomass appears to be well phased in the Ionian basin, but with a N-S gradient in the amplitude of the response.

Finally, a third meridional transect was chosen to evaluate the chlorophyll dynamics in the Levantine basin (Fig. 3c). Also in this area an evident North-South gradient can be detected in the diagram. The 34° N parallel divides the plot in an ultra-oligotrophic region (lat <34° N) and in an oligotrophic area (lat >34°). The maximum values in the transect correspond to the sporadic bloom observed in Rhodes Gyre area (i.e. 35°–36° N), in late winter/early spring (D’Ortenzio et al., 2003). The bloom is intermittent and, when observed, displays a strong interannual variability in the spatial shape and timing. Sometimes (i.e. in 2004) there are no signs of the bloom, and the region is very similar to the surrounding areas. Moving southward along the transect the region exhibits, for most of the year, very low values of chlorophyll concentration. However, from December-January to the beginning of spring, biomass concentrations are 2–3 times higher than the corresponding summer-autumn values. Furthermore, chlorophyll concentrations are only slightly lower than the correspondent values north of the 35° parallel. Once again, the gradients become smoother during early winter, as already observed in the other Hovmöller diagrams presented above.

In synthesis, the Mediterranean Sea displays relatively low values of annually averaged resident biomass with a clear difference between the Eastern and Western basins. The analysis of the 4 transects confirms the results published previously, while showing that interannual variability can be significant. The timing of the annual peak is

On the trophic regimes of the Mediterranean SeaF. D’Ortenzio and
M. Ribera d’Alcalá

Title Page

Abstract

Introduction

Conclusions

References

Tables

Figures

⏪

⏩

◀

▶

Back

Close

Full Screen / Esc

Printer-friendly Version

Interactive Discussion

On the trophic regimes of the Mediterranean SeaF. D’Ortenzio and
M. Ribera d’Alcalá

Title Page

Abstract

Introduction

Conclusions

References

Tables

Figures

⏪

⏩

◀

▶

Back

Close

Full Screen / Esc

Printer-friendly Version

Interactive Discussion

different whether the considered site is that of relatively confined intense blooms (i.e., North Western Mediterranean), that of a biomass increase widespread over a large area of the basin (i.e., in early winter), or that of recurrent, but not constant, localized biomass enhancements (i.e. Rhodes or South Adriatic). The first two have their own specific timing, which for the former is centered around early spring and for the latter in early-mid winter, whereas the third type displays a more important variability. The timings of the first two types of bloom are then out of phase by approximately two months, whereas the third type displays a more variable dynamic with different duration and phase.

All the above implies that different dynamics coexist in the Mediterranean basin. There are sites where intense blooms occur in early spring, others where less intense (at least at the surface) but more diffuse biomass accumulations occur in early-mid winter and others where the blooming events show a pronounced interannual variability of the seasonal dynamic, which spans from years with intense pulses of biomass enhancement to years showing a persistence of oligotrophic conditions. To make the distinction more clear, we define the first sites as “*blooming areas*”, the second ones as “*non-blooming areas*” and the third ones as “*intermittently blooming areas*”, without pretending to revisit the controversial definition of what is a phytoplankton bloom. In other words, we only wish to highlight the different ranges of chlorophyll variations and/or of the baseline value.

In the following paragraph this preliminary classification will be supported by a more robust analysis based on K-means clustering.

3.2 The K-means cluster analysis

Figure 4 shows the spatial distribution of the clusters obtained with the K-means procedure, while the seasonal evolution of the 7 centers is reported in Fig. 5. It is worth remembering that the only constraints imposed to the K-means analysis were: 1) the number of the clusters and 2) the normalization performed on the climatological time series. The first was chosen on the basis of a test indicating the maximum number of

clusters statistically significant/important for the SeaWiFS data set.

In general, the structure and the spatial classification of the Mediterranean pixels, as depicted in Fig. 4, are very consistent. The geographical boundaries between the clusters are reasonably well defined and the within-cluster heterogeneity is very low.

5 To better discuss the results, clusters were grouped again in four bigger classes, using, as discriminating criterion, the position of the yearly maximum in the temporal evolution of the cluster's centers.

In more detail:

10 The north western area of the basin is classed as a unique, specific, cluster (#5). Its time course displays a peak in late winter-early spring months. In the other months, the values are close to the background line (generally less than 25% of the maximum values), differing slightly between winter and summer/fall.

15 Another cluster (#4) encompasses several regions disseminated all over the basin (the South Adriatic gyre, the area offshore the North-Western Ionian Italian, the Rhodes Gyres, the Western Tyrrhenian, the Balearic front, the Liguro-Provencal current and, partially, the Alboran sea). The temporal evolution of this class shows its maximum in February–March, with an appreciable increase in October and a less pronounced difference between minima and maxima than in cluster #5.

20 Two clusters (#6 and #7) are limited to the Northern and Western Adriatic boundaries, and to a few spots in coastal areas. The first cluster (#6) displays a pronounced maximum (up to a two fold increase of the background biomass value) in late summer-early autumn. For the second cluster (#7) the seasonal signal is barely evident, with very similar values all the year round (range=0.1–0.3).

25 The three residual clusters (#1, #2, #3) cover the rest of the basin (about 60% of the total area), following a well-defined, though not an exclusively geographical distribution: one is prevalently located in the Algerian Basin (#3), another (#1) southward of the 35° parallel and in the Tyrrhenian Basin, and the last (#2) covers almost entirely the Aegean, the Adriatic and the Central Ionian basins. The temporal trends of these clusters are similar, showing a bimodal dynamic, with higher and quite constant values

BGD

5, 2959–2983, 2008

On the trophic regimes of the Mediterranean Sea

F. D'Ortenzio and
M. Ribera d'Alcalá

Title Page

Abstract

Introduction

Conclusions

References

Tables

Figures

⏪

⏩

◀

▶

Back

Close

Full Screen / Esc

Printer-friendly Version

Interactive Discussion

in fall-winter and lower and uniform values in late spring-summer. The slight differences observed concern the time of the decrease, which is February for cluster #3 and March for cluster #2 and #1. The rise is in mid-September for all of them. Furthermore, the concentration span between minima and maxima increases from cluster #2 (factor less than 2) to cluster #1 (around 2) to cluster #3 (more than 2).

The last three clusters have a more patchy distribution, particularly evident along the boundaries they have in common (e.g., the South Western Ionian) with a lot of interweaving. This is definitively not the case for the other clusters, which are geographically well localized.

Summarizing, a well resolved zonation of the Mediterranean basin was obtained applying the k-means clusters analysis to the normalized climatological SeaWiFS data.

The link between the three classes introduced above (“*blooming*”, “*non-blooming*” and “*intermittently blooming*” zones) and the new classification can be esteemed by comparing panels a and b of Figure 5.

Cluster #5 definitely corresponds to the “*blooming*” areas, while the big class including clusters #1, #2 and #3 matches the previous definition of the “*non-blooming*” regions. Cluster #4 identifies regions with erratic regimes, which combine periods with intense biomass accumulation and oligotrophic conditions, and then it can likely be associated to our definition of the “*intermittently blooming*” zones. Finally, the big class encompassing clusters #6 and #7 defines another regime, mainly related to the coastal areas, the “*coastal*” regimes, which were barely visible in the Hovmöller diagram of transect 2, but are more evident in the climatological map of the whole basin (Fig. 1).

4 Discussion and conclusions

The proposed classification, while more statistically robust, does not substantially deviate from what already proposed by previous studies (Morel and Andre, 1991; Antoine et al., 1995; Bosc et al., 2004). The comparison between the climatological mean (Fig. 1) and the clusters distribution (figure 5) confirms this point. Therefore, we in-

On the trophic regimes of the Mediterranean Sea

F. D’Ortenzio and
M. Ribera d’Alcalá

Title Page

Abstract

Introduction

Conclusions

References

Tables

Figures

⏪

⏩

◀

▶

Back

Close

Full Screen / Esc

Printer-friendly Version

Interactive Discussion

On the trophic regimes of the Mediterranean SeaF. D’Ortenzio and
M. Ribera d’Alcalá

Title Page

Abstract

Introduction

Conclusions

References

Tables

Figures

◀

▶

◀

▶

Back

Close

Full Screen / Esc

Printer-friendly Version

Interactive Discussion

fer that it is the structure of the seasonal cycle that determines intense or moderate accumulation of phytoplankton biomass and that different seasonal cycles correspond to different “trophic regimes” *sensu* Longhurst. In fact, the chlorophyll time course of the Longhurst model number 3 follows a trend very similar to the “*non-blooming*” classification of the present study (clusters #1–3), which represents, in fact, 60% of the Mediterranean basin. On the other hand, our “*blooming*” regime (cluster #5) appears very similar to the model number 2 of the Longhurst classification, demonstrating that, at least in some areas, the Mediterranean follows North-Atlantic-like dynamics. The Longhurst coastal biome is also represented (our clusters #6 and #7), but with some important differences from the Longhurst classification. In his reconstruction, upwelling and tides play a major role. Almost all the areas in our coastal clusters are not proper coastal upwelling areas and none of them depend directly on tidal mixing. Pixels of cluster #7 have a spotty distribution with the exception of Northern Adriatic, the Gulf of Lion area and the North Aegean region. We interpret this pattern as being coupled with the phase of late fall-winter riverine runoff.

Our cluster #6 displays its maximal values during the late summer-fall period and a further decrease in winter. The fall increase may reflect the response to the disruption of pycnocline, which, in a shallow area, could be particularly effective through the recirculation of the bottom reservoir (both of nutrients and biota). The later decrease of biomass is likely due to flushing by lateral water masses, which carry a lower amount of autotrophic biomass.

The most interesting group is cluster #4, which we classified as “*intermittently blooming*”. Intermittence is certainly a manifestation of the interannual variability as also discussed by Longhurst, but it is crucial to understand which are the changes in the mechanisms responsible for it. Some areas belonging to cluster #4 are areas of cyclonic circulation (Rhodes, South Adriatic, Northern Tyrrhenian) while the other areas are not. Their seasonal cycle displays a progressive increase in biomass from September to February. We interpret this cycle as an overlap of the typical autumnal bloom of temperate regions followed by a progressive deepening of the thermocline and/or

the subsequent vertical transport due to cyclonic or mesoscale frontal dynamics. Interestingly, we could not find any Longhurst's oceanic province matching the pattern of cluster #4 and we believe that, if our hypothesis about the role of flushing is correct, the reason is that Longhurst analysis focuses on much larger scales.

5 As Mediterranean is considered an oligotrophic ocean, we now focus our discussion on the oligotrophic clusters, i.e. the clusters that encompass the areas showing the lower values of chlorophyll concentration (#1, 2, 3). The “*non-blooming*” clusters (#1, 2, 3) display a similar seasonal cycle, with low biomass during late spring-summer and higher biomass up to the maxima in late fall-winter. The differences among them are
10 in the ranges between maximum and minimum: cluster #3 displays the highest range (approximately 3:1 ratio) and cluster #2 the lowest (approximately 2:1). Differences are also in the inflections of the curve, with cluster 1 and 2 displaying a smooth rise and cluster #3 a steeper rise around October and a steeper decrease around mid-January. Looking at the distribution of the pixels for each cluster (Fig. 4) and at the mixed layer
15 climatology by D’Ortenzio et al. (2005) our interpretation of the “*non-blooming*” clusters is the following. Cluster #3 is driven by the Atlantic water inflow. Assuming a transit time of two to four months from Gibraltar to the area (Millot, 1999), the surface water in September-November should be severely deprived of nutrients and biomass, entering the basin as a summer Atlantic surface water. The steep biomass increase from Octo-
20 ber to December is supported by the progressive, though moderate, deepening of the mixed layer within the area (e.g., D’Ortenzio et al., 2005 their Fig. 1). We also hypothesize that the phytoplankton biomass is only moderately controlled by the grazing. In January and February there is a further deepening of the mixed layer, which produces a slight dispersal of biomass in the water column, with possibly a higher depth integrated
25 biomass. At the time of re-stratification (e.g. March) there are no more new nutrients to be used, which precludes any shift-up of phytoplankton biomass. We interpret the decrease not only as the result of the biological pump but also as the redistribution of carbon within the food web with an increased ratio of consumers vs. primary producers. The time course of the other two “*non blooming*” clusters is quite similar to

On the trophic regimes of the Mediterranean Sea

F. D’Ortenzio and
M. Ribera d’Alcalá

[Title Page](#)[Abstract](#)[Introduction](#)[Conclusions](#)[References](#)[Tables](#)[Figures](#)[Back](#)[Close](#)[Full Screen / Esc](#)[Printer-friendly Version](#)[Interactive Discussion](#)

cluster #3 and displays a quasi-bimodal pattern: higher biomass from mid-October to mid-March and lower biomass in the remaining period. It is worth noting that the high biomass interval overlaps with the period when irradiance is at its minimum. Apart from the role played by the new nutrients enriching the photic zone due to the deepening of the mixed layer, it is likely that the biomass reaches higher values also because of a relaxation of the grazing pressure.

Our analysis demonstrated that the possible latitudinal gradient in the Mediterranean biomass is perturbed by regional processes that prevent the formation of a unique trend. The Mediterranean seasonal signal is smoothed according to patterns typical of sub-tropical regions, which have different characteristics in the different Mediterranean areas. Most of the basin is characterized by early biomass enhancements, which last for 2–3 months depending on the region. They are not intense (although chlorophyll concentration doubles) as only highly retarded blooms can exploit enough new nutrients to allow significant build-ups of biomass, which can be initially uncoupled from consumers. This is the case of the classical spring bloom regime, which also occurs in the basin: regularly (in the North Western Mediterranean) and intermittently (in four specific areas). We also speculate that each regime hosts a slightly different food web and that any shifts in the regime will result primarily in a rearrangement of the clusters, thus making the ocean color a tool for prompt detection of climate impact in the basin. Therefore, the view of the Mediterranean Sea as a good macrocosm to monitor changes in food web structure in relation to changes in external forcing is somehow supported by the reduced space scales in which ecoclines takes place.

Finally, it is interesting to compare the Mediterranean provinces with the oceanic ones. It is well known that the North Atlantic hosts the most intense (in terms of both temporal and spatial extension) phytoplankton bloom of the global ocean (see Duklow and Harris, 1993 and the papers in the special issue). The timing of the North Atlantic blooms onset and development are not uniform along the whole North Atlantic region. Following the analysis reported by Siegel et al. (2003), the blooms in the regions located between 35° N and 45° N start in the first days of the year (January–February),

BGD

5, 2959–2983, 2008

On the trophic regimes of the Mediterranean Sea

F. D'Ortenzio and
M. Ribera d'Alcalá

Title Page

Abstract

Introduction

Conclusions

References

Tables

Figures



Back

Close

Full Screen / Esc

Printer-friendly Version

Interactive Discussion

On the trophic regimes of the Mediterranean Sea

F. D’Ortenzio and
M. Ribera d’Alcalá

Title Page

Abstract

Introduction

Conclusions

References

Tables

Figures

⏪

⏩

◀

▶

Back

Close

Full Screen / Esc

Printer-friendly Version

Interactive Discussion



whereas in the northern region (where the highest concentrations are observed) the bloom onset occurs later in spring (March–April). The “bloom period” is identified in January–February, in March–April and in May–June, for the areas 20°–35° N, 35°–45° N and 45°–55° N respectively. In the Mediterranean, the same “mixture” of trophic regimes is embedded in a more narrow latitudinal range (30°–43° N). Therefore, even if the temporal dynamics are similar, the Mediterranean system appears shifted in time (or in latitude, depending on the perspective) respect to the corresponding regions in the North Atlantic following the same Longhurst model.

The meridional limit of the NA bloom is generally located between 35° and 40° North, with biomass concentrations increasing with latitude. South of this limit, the trophic regime is considered tropical or sub-tropical, thus characterized by a strong oligotrophy and a weak seasonal variability. The Mediterranean is then located on the boundary of these two regions, with the “*non-blooming*” areas exhibiting a sub-tropical regime, interleaved with areas (i.e. the “*blooming*” and the “*intermittently blooming*” regions) where, under particular conditions (both atmospheric and hydrographic), North Atlantic bloom-like events take place.

Acknowledgements. The US NASA space agency is thanked for the easy access to SeaWiFS data. The authors are also grateful to Hervé Claustre and Louis Prieur, for their helpful comments and suggestions. The authors would also like to acknowledge Salvatore Marullo and Rosalia Santoleri. Without their pioneering works on remote sensing analysis in the Mediterranean, their continuous and generous assistance, their sharing of knowledge of remote sensing techniques, this work would have never been possible.

References

- Antoine, D., Morel, A., and Andre, J. M.: Algal pigment distribution and primary production in the eastern Mediterranean as derived from Coastal Zone Color Scanner observations, *J. Geophys. Res.*, 100, 16 193–16 209, 1995.
- Antoine, D., D’Ortenzio, F., Hooker, S. B., Bécu, G., Gentili, B., Tailliez, D., and Scott, A.: Assessment of uncertainty in the ocean reflectance determined by three satellite ocean color

- sensors (MERIS, SeaWiFS, MODIS) at an offshore site in the Mediterranean Sea (BOUS-
SOLE project), *J. Geophys. Res.*, in press, 2008.
- Ball, G. H. and Hall, D. J.: “A clustering technique for summarizing multivariate data”, *Behavioral
Science*, 12(2), 153–155, 1965.
- 5 Bosc, E., Bricaud, A., and Antoine, D.: Seasonal and interannual variability in algal biomass
and primary production in the Mediterranean Sea, as derived from 4 years of SeaWiFS
observations, *Glob. Biogeochem. Cy.*, 18, GB1005, doi:10.1029/2003GB002034,
2004.
- Calinski, T. and Harabasz, J.: A dendrite method for cluster analysis, *Communications in statis-
tics*, 3(1), 1–27, 1974.
- 10 Claustre, H., Morel, A., Hooker, S. B., Babin, M., Antoine, D., Oubelkheir, K., Bricaud, A.,
Leblanc, K., Quéguiner, B., and Maritorena, S.: Is desert dust making oligotrophic waters
greener?, *Geophys. Res. Lett.*, 29, 1469, doi:10.1029/2001GL014056, 2002.
- Devred, E., Platt, T., and Sathyendranath, S.: Delineation of ecological provinces using ocean
colour radiometry, *Marine Ecology Progress Series*, 346, 1–17, 2007.
- 15 D’Ortenzio, F., Marullo, S., Ragni, M., Ribera D’Alcalà, M., and Santoleri, R.: Validation of
empirical SeaWiFS algorithms for chlorophyll-*a* retrieval in the Mediterranean Sea: a case
study for oligotrophic seas, *Remote sensing of the Environment*, 82, 79–94, 2001.
- D’Ortenzio, F., Ragni, M., Marullo, S., and Ribera d’Alcala, M.: Did biological activity in the
20 Ionian Sea change after the Eastern Mediterranean Transient? Results from the analysis
of remote sensing observations, *J. Geophys. Res.*, 108, 8113, doi:10.1029/2002JC001556,
2003.
- D’Ortenzio, F., Iudicone, D., Montegut, C. D., Testor, P., Antoine, D., Marullo, S., Santoleri, R.,
and Madec, G.: Seasonal variability of the mixed layer depth in the Mediterranean Sea as de-
25 rived from in situ profiles, *Geophys. Res. Lett.*, 32(12), L12605, doi:10.1029/2005GL022463,
2005.
- Ducklow, H. and Harris, R.: JGOFS North Atlantic Bloom Experiment (NABE), *Deep-Sea Res.*
II, 40(1–2), 1993.
- Gacic, M., Civitarese, G., Misericocchi, S., Cardin, V., Crise, A., and Mauri, E.: The open-ocean
30 convection in the southern Adriatic: A controlling mechanism of the spring phytoplankton
bloom, *Cont. Shelf Res.*, 22, 1897–1908, 2002.
- Hartigan, J. A.: *Clustering Algorithms*, Wiley, New York, 351 pp., 1975.
- Hartigan, J. A. and Wong, M. A.: A K-means clustering algorithm, *Applied Statistics*, 28, 100–

BGD

5, 2959–2983, 2008

**On the trophic
regimes of the
Mediterranean Sea**F. D’Ortenzio and
M. Ribera d’Alcalà

Title Page

Abstract

Introduction

Conclusions

References

Tables

Figures

◀

▶

◀

▶

Back

Close

Full Screen / Esc

Printer-friendly Version

Interactive Discussion

108 1979.

Heyer, L. J., Kruglyak, S., and Yooseph, S.: Exploring Expression Data: Identification and Analysis of Coexpressed Genes, *Genome Research*, 9, 1106–1115, 1999.

IOC: Science of the Mediterranean Sea and its applications, IOC Workshop Report No. 155, UNESCO, Paris, 87 pp., 1999.

Longhurst, A.: *Ecological geography of the sea*, 2nd edn. Elsevier Science Publishers, New York, 552 pp., 2006.

Mann, K. H., and Lazier, J. R. N.: *Dynamics of Marine Ecosystems: Biological-Physical Interactions in the Oceans*, Blackwell Publishing, New York, 496 pp., 2006.

McClain, C. R., Feldman, G. C., and Hooker S. B.: An overview of the SeaWiFS project and strategies for producing a climate research quality global ocean bio-optical time series, *Deep-Sea Res. II*, 51. 5–42, 2004.

Marty, J.-C., Chiaverini, J., Pizay, M. D., and Avril, B.: Seasonal and interannual dynamics of nutrients and phytoplankton pigments in the western Mediterranean Sea at the DYFAMED time-series station (1991–1999), *Deep-Sea Res. II*, 49, 1965–1985, 2002.

Mazzocchi, M. G., Christou, E. D., Di Capua, I., Fernandez de Puelles, M., Fonda-Umani, S., Molinero, J. C., Nival, P., and Siokou-Frangou, I.: Temporal variability of *Centropages typicus* in the Mediterranean Sea over seasonal-to-decadal scales, *Progress in Oceanography*, 72, 214–232, 2007.

Millot, C.: Circulation in the Western Mediterranean Sea, *J. Marine Systems*, 20, 423–442, 1999.

Milligan, G. W. and Cooper, M. C.: An examination of procedures for determining the number of clusters in a data set, *Psychometrika*, 159–159, 1985.

Morel, A. and Berthon, J. F.: Surface pigments, algal biomass profiles, and potential production of the euphotic layer: relationship reinvestigated in view of remote-sensing applications, *Limnol. Oceanogr.*, 34(8), 1545–1562, 1989.

Morel A. and Andre J. M.: Pigment distribution and primary production in the western Mediterranean as derived and modeled from Coastal Zone Color Scanner observations, *J. Geophys. Res.*, 96, 12 685–12 698, 1991.

Oguz, T., Tugrul, S., Kideys, A. E., Ediger, V., and Kubilay, N.: Physical and biogeochemical characteristics of the Black Sea in Allan R. Robinson and Kenneth H. Brink editors, *The Sea*, Vol. 14B, Chapter 33, Harvard University Press, Cambridge (MA), 1331–1369, 2005.

Oliver, M. J., Glenn, S., Kohut, J. T., Irwin, A. J., Schofield, O. M., Moline, M. A., Bissett, W. P.:

BGD

5, 2959–2983, 2008

On the trophic regimes of the Mediterranean Sea

F. D’Ortenzio and
M. Ribera d’Alcalà

Title Page

Abstract

Introduction

Conclusions

References

Tables

Figures

◀

▶

◀

▶

Back

Close

Full Screen / Esc

Printer-friendly Version

Interactive Discussion

- Bioinformatic approaches for objective detection of water masses on continental shelves, *J. Geophys. Res.*, 109, C07S04, doi:10.1029/2003JC002072, 2004.
- O'Reilly, J. E., Maritorena, S., Mitchell, B. G., Siegel, D. A., Carder, K. L., Garver, S. A., Kahru, M., McClain, C.: Ocean color chlorophyll algorithms for SeaWiFS, *J. Geophys. Res.*, 103, 24 937–24 954, 1998.
- 5 Pinardi, N. and Masetti, E.: Variability of the large scale general circulation of the Mediterranean Sea from observations and modelling: a review, *Palaeogeography, Palaeoclimatology, Palaeoecology*, 158, 153–173, 2000.
- Platt, T.: Phytoplankton production in oligotrophic marine ecosystems: the Mediterranean Sea, in: *Mediterranean Marine Ecosystems*, edited by: Moraitou-Apostolopoulou, M. and Kiortsis, V., Plenum Press, 231–246, 1985.
- 10 Ratkowsky, D. A. and Lance, G. N.: A criterion for determining the number of groups in a classification *Australian Computer Journal*, 10, 115–117, 1978.
- Sannino, G., Carillo, A., and Artale, V.: Three-layer view of transports and hydraulics in the Strait of Gibraltar: A three-dimensional model study, *J. Geophys. Res.*, 112, C03010, doi:10.1029/2006JC003717, 2007.
- 15 Santoleri, R., Banzon, V., Marullo, S., Napolitano, E., D'Ortenzio, F., and Evans, R.: Year-to-year variability of the phytoplankton bloom in the southern Adriatic Sea (1998–2000): Sea-viewing Wide Field-of-view Sensor observations and modeling study, *J. Geophys. Res.*, 108(C9), 8122, doi:10.1029/2002JC001636, 2003.
- 20 Sathyendranath, S. and Platt, T.: Remote sensing of oceanic chlorophyll: consequence of nonuniform pigment profile, *Appl. Opt.*, 28(3), 490, 1989.
- Siegel, D. A., Doney, S. C., and Yoder, J. A.: The North Atlantic Spring Phytoplankton bloom and Sverdrup's critical depth hypothesis, *Science* 296, 730–733, 2002.
- 25 Sournia, A.: La production primaire planctonique en Mediterranee. Essai de mise a jour, *Bull. Et. Comm. Medit.*, 5, 1–128, 1973.
- Volpe, G., Santoleri, R., Vellucci, V., Ribera d'Alcalà, R., Marullo, S., and D'Ortenzio, F.: The colour of the Mediterranean Sea: global versus regional bio-optical algorithms evaluation and implication for satellite chlorophyll estimates, *Remote Sensing of the Environment*, 107, 625–638, 2007.
- 30

BGD

5, 2959–2983, 2008

On the trophic regimes of the Mediterranean Sea

F. D'Ortenzio and
M. Ribera d'Alcalà

Title Page

Abstract

Introduction

Conclusions

References

Tables

Figures

◀

▶

◀

▶

Back

Close

Full Screen / Esc

Printer-friendly Version

Interactive Discussion

On the trophic regimes of the Mediterranean Sea

F. D’Ortenzio and
M. Ribera d’Alcalà

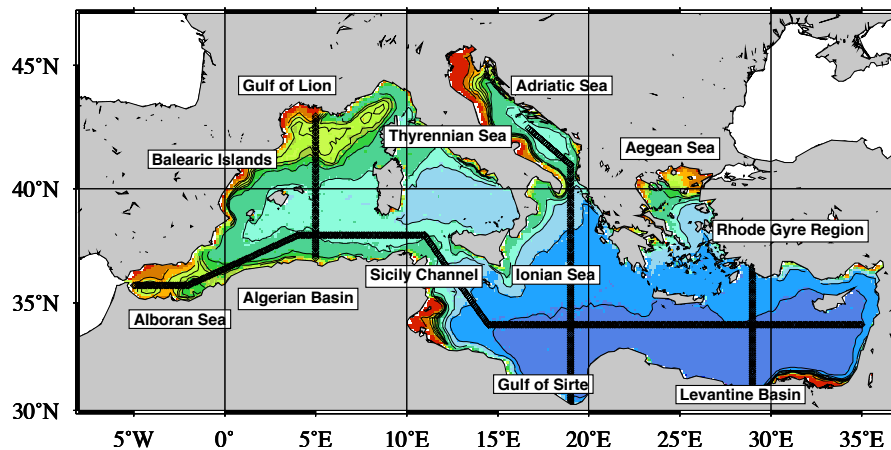


Fig. 1. Ten years climatological mean map of the chlorophyll concentration, with, over-imposed, the geographical locations of the regions cited in the text. Bold lines indicate the position of the four transects used to extract satellite data.

Title Page

Abstract

Introduction

Conclusions

References

Tables

Figures



Back

Close

Full Screen / Esc

Printer-friendly Version

Interactive Discussion

On the trophic regimes of the Mediterranean Sea

F. D’Ortenzio and M. Ribera d’Alcalá

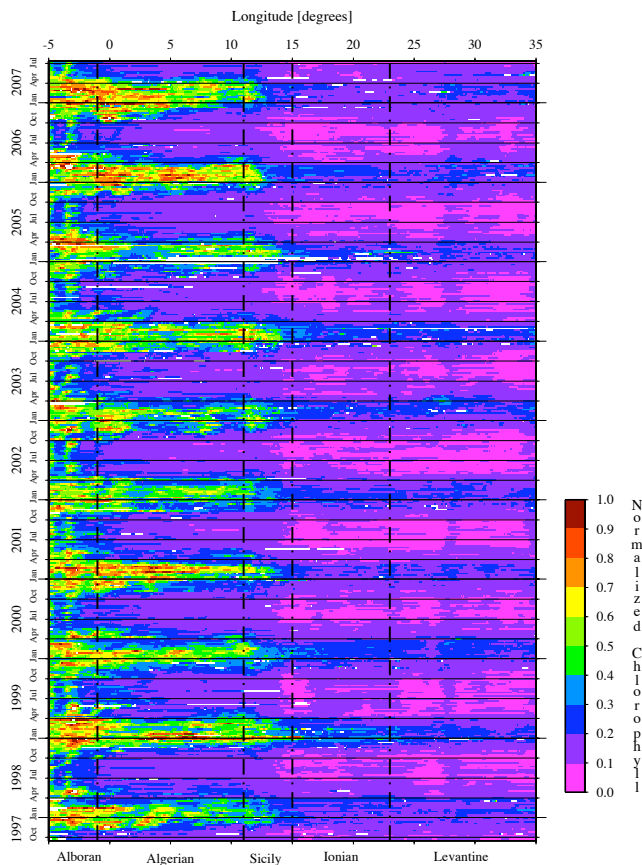


Fig. 2. Hoefvmoeller diagram on the West-East transect of Normalized Chlorophyll concentration (see Fig. 1 for the geographical position of the transect). Normalized Chlorophyll is calculated normalizing the values along the transect by the maximum value of the transect.

Title Page	
Abstract	Introduction
Conclusions	References
Tables	Figures
⏪	⏩
◀	▶
Back	Close
Full Screen / Esc	
Printer-friendly Version	
Interactive Discussion	

On the trophic regimes of the Mediterranean Sea

F. D’Ortenzio and M. Ribera d’Alcalá

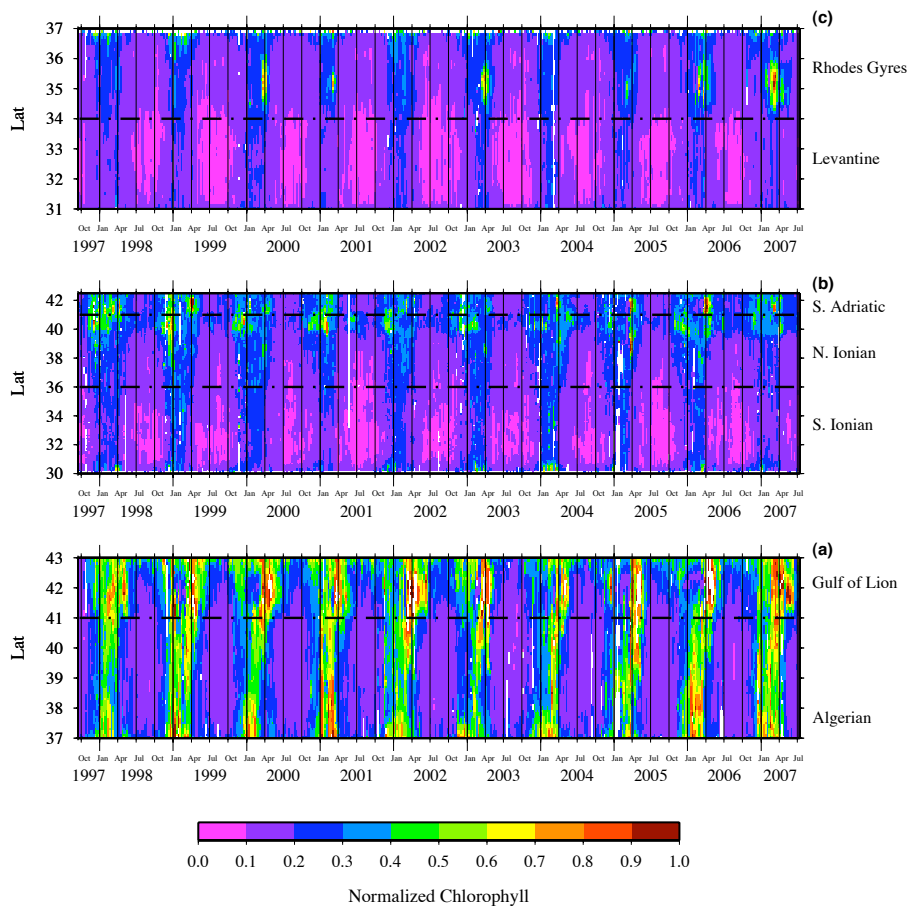


Fig. 3. Hoevmoeller diagram on North-South transects of Normalized Chlorophyll (see Fig. 2 and text). **(a)** Western Mediterranean **(b)** Adriatic and Central Mediterranean **(c)** Levantine Basin (see Fig. 1 for the position of the transects).

Title Page

Abstract Introduction

Conclusions References

Tables Figures

◀ ▶

◀ ▶

Back Close

Full Screen / Esc

Printer-friendly Version

Interactive Discussion



On the trophic regimes of the Mediterranean Sea

F. D’Ortenzio and
M. Ribera d’Alcalà

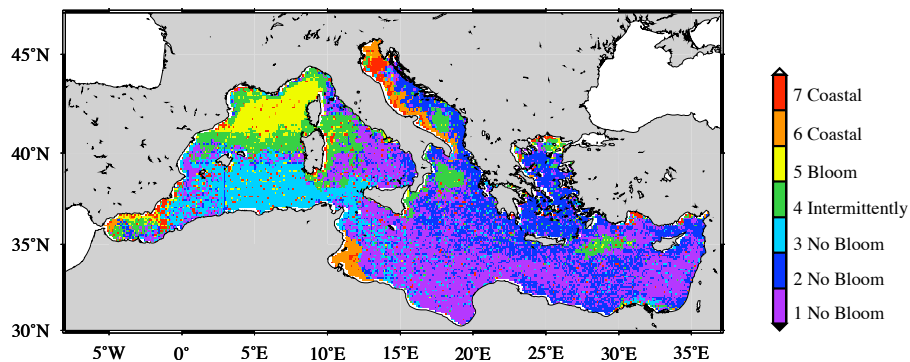


Fig. 4. Spatial distribution of the clusters obtained from the k-means analysis.

Title Page

Abstract

Introduction

Conclusions

References

Tables

Figures

⏪

⏩

◀

▶

Back

Close

Full Screen / Esc

Printer-friendly Version

Interactive Discussion

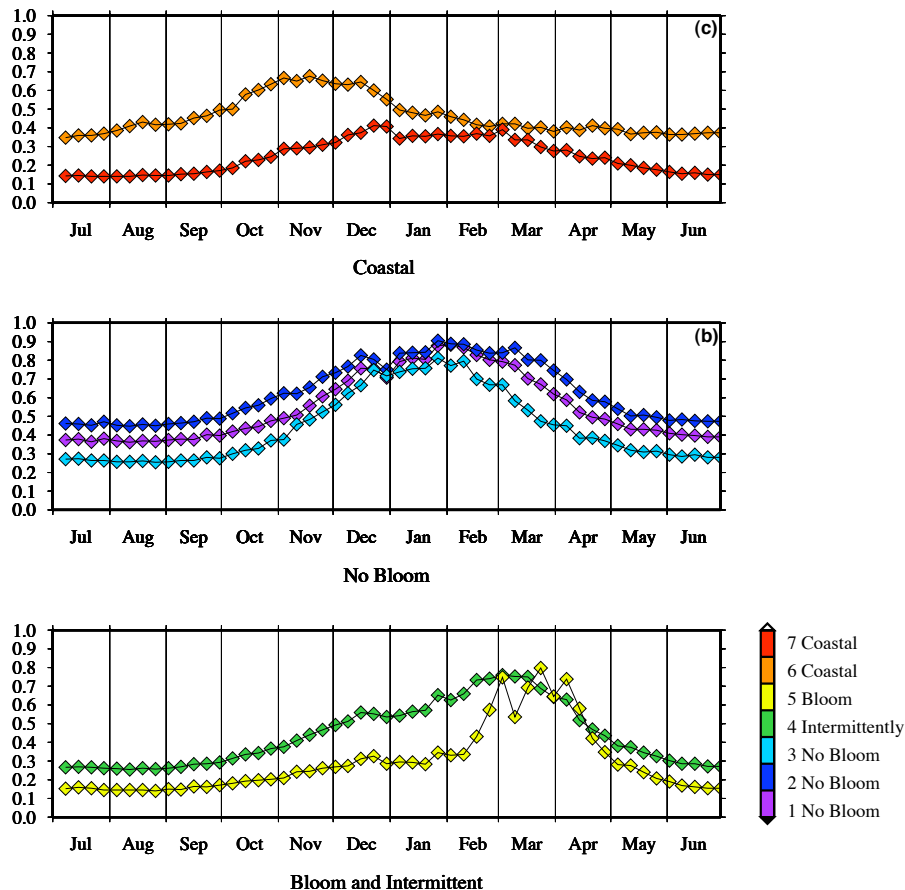


Fig. 5. Temporal evolution of the centers of the clusters obtained from the k-means analysis. The colors of the curves follow the same color scale of Fig. 4. **(a)** “Bloom” and “Intermittently blooming” areas (clusters #4 and #5). **(b)** “No-bloom” regions (clusters #1,#2,#3). **(c)** “Coastal” regions (clusters #6 and #7).