

This discussion paper is/has been under review for the journal Biogeosciences (BG).  
Please refer to the corresponding final paper in BG if available.

# Carbonate sedimentation and effects of eutrophication observed at the Kališta subaquatic springs in Lake Ohrid (Macedonia)

**M. Matter<sup>1</sup>, F. S. Anselmetti<sup>1,5</sup>, B. Jordanoska<sup>2</sup>, B. Wagner<sup>3</sup>, M. Wessels<sup>4</sup>, and A. Wüest<sup>1,5</sup>**

<sup>1</sup>Eawag, Swiss Federal Institute of Aquatic Science and Technology, Department of Surface Waters – Research and Management, 8600 Dübendorf and 6047 Kastanienbaum, Switzerland

<sup>2</sup>Hydrobiological Institute Ohrid, 6000 Ohrid, Macedonia

<sup>3</sup>University of Cologne, Institute of Geology and Mineralogy, 50674 Cologne, Germany

<sup>4</sup>Institute for Lake Research, 88085 Langenargen, Germany

<sup>5</sup>Institute of Biogeochemistry and Pollutant Dynamics, ETH Zurich, 8092 Zurich, Switzerland

Received: 19 May 2010 – Accepted: 1 June 2010 – Published: 21 June 2010

Correspondence to: F. S. Anselmetti (flavio.anselmetti@eawag.ch)

Published by Copernicus Publications on behalf of the European Geosciences Union.

## Carbonate sedimentation around springs in Lake Ohrid

M. Matter et al.

Title Page

Abstract

Introduction

Conclusions

References

Tables

Figures

⏪

⏩

◀

▶

Back

Close

Full Screen / Esc

Printer-friendly Version

Interactive Discussion

## Abstract

To date, little is known about the role of spring waters with respect to authigenic carbonate precipitation in the shallow lacustrine setting. Lake Ohrid, located in Southeastern Europe, is a large lake fed to over 50% by karstic springs of which half enter subaquatically and influence significantly its ecology and species distribution. In order to evaluate how sedimentological processes are influenced by such shallow-water springs, the Kališta subaquatic spring area in the north west of Lake Ohrid was investigated by a sidescan sonar survey and with sediment traps and three transects of gravity short cores. Results indicate that sedimentation in the spring area is dominated by authigenic carbonate precipitation. High sedimentation rates and evidences for bio-induced precipitation processes were observed in the water column and in the sediments. Two distinct stratigraphic units characterize the shallow subsurface, both composed of carbonate silts with high carbonate contents of up to 96%, but differing in color, carbonate content and diatom content. A chronological correlation of the cores by radiocarbon dates and  $^{137}\text{Cs}$  activities places the transition between the two stratigraphic units after ~1955 AD. At that time, coastal sedimentation changed drastically to significantly darker sediments with higher contents of organic matter and more abundant diatoms. This change coincides with the recent human impact of littoral eutrophication.

## 1 Introduction

Subaquatic springs are an efficient source of ion-rich waters that may affect authigenic mineral-forming processes in lakes. In particular calcium-rich waters from karstic carbonate-dominated catchments may provide  $\text{Ca}^{2+}$  and  $\text{HCO}_3^-$ -ions to significantly enhance lacustrine carbonate precipitation. With this contribution, we highlight the role of the subaquatic springs in Lake Ohrid for its sediment-building processes and recent sedimentation pattern.

**BGD**

7, 4715–4747, 2010

## Carbonate sedimentation around springs in Lake Ohrid

M. Matter et al.

Title Page

Abstract

Introduction

Conclusions

References

Tables

Figures

◀

▶

◀

▶

Back

Close

Full Screen / Esc

Printer-friendly Version

Interactive Discussion



---

## Carbonate sedimentation around springs in Lake Ohrid

M. Matter et al.

---

Title Page

Abstract

Introduction

Conclusions

References

Tables

Figures

⏪

⏩

◀

▶

Back

Close

Full Screen / Esc

Printer-friendly Version

Interactive Discussion



The sediment deposition nearby the subaquatic springs is an interesting archive reflecting the role of those springs. Sediments act as recorders of chemical, physical and biological boundary conditions, so that changes in lake and/or spring waters should be reflected in the sediment composition. Especially, the high  $\text{Ca}^{2+}$  and  $\text{HCO}_3^-$  content of the spring waters (Table 1) suggest that authigenic calcite precipitation could take place particularly near the springs affecting the local sedimentation processes. Previous studies from deep basin sediment cores indicate that carbonate precipitation seems to have been absent or reduced in Lake Ohrid during certain periods of the Holocene, which could have been caused by lower ion concentrations and/or less spring activity (Shapley et al., 2005; Wagner et al., 2009 and subm.; Vogel et al., 2010b). As the subsurface of Lake Ohrid is targeted for a deep drilling campaign in the frame of the International Continental Scientific Deep Drilling Program (ICDP; Wagner et al., 2008), knowledge of sedimentologic role of the springs is needed in order to establish the paleoenvironmental implications of the future deep drill cores.

This study thus aims at characterizing the sedimentation pattern at the Kališta spring area. We address the question, whether the subaquatic springs substantially influence the in-situ carbonate precipitation as it is stored in the sediments. We will investigate, whether spring sedimentation changed through time. One concern is the impact of human-induced eutrophication since the 1950s due to increasing nutrient input following the growing population and its anthropogenic activity. Due to its large volume and slow response time (Matzinger et al., 2007), Lake Ohrid is still oligotrophic and eutrophication could be delayed. A potential effect on the shallow water realm has never been investigated and the record of the near-spring sediments provides important integrative information.

## 2 Study site

Lake Ohrid ( $40^{\circ}54'$  to  $41^{\circ}10' \text{ N}$  and  $20^{\circ}38'$  to  $20^{\circ}48' \text{ E}$ ) is situated at 693 m a.s.l. in a mountainous and partly karstic region. Lake Ohrid is a large ( $358 \text{ km}^2$ ), deep (289 m)



was guaranteed by buoys. The protection caps of the two lower sediment traps were removed 10 min after mooring deployment, when disturbed sediment due to diver's movements had settled, thus preventing an impact on the collected sediment.

After removal of organic matter with a 2% H<sub>2</sub>O<sub>2</sub> solution for four days, the homogeneous dry material of the sediment traps was weighed and accumulation rates were calculated using:

$$k = \frac{m_{\text{dry}}}{a \Delta t}$$

where  $k$  (g m<sup>-2</sup> d<sup>-1</sup>) is the accumulation rate (or mass sedimentation rate) of dry material,  $m_{\text{dry}}$  (g) the dry mass collected,  $a$  (0.0052 m<sup>2</sup>) is the open trap area, and  $\Delta t$  the time interval of exposure (14 d).

Twenty gravity cores of up to 82 cm length were recovered in May 2007 along three transects (Fig. 2). Cores were taken along the shore every ~100 m starting from the springs towards north and south in water depths of up to ~10 m, as well as towards the center of the lake, reaching a water depth of ~50 m. Additional push cores were recovered in September 2007 by divers within the depression of the active spring zone (core 46) and at a distance of 1250 m from the spring on the northern transect (core 49; Fig. 2).

Before opening, cores were scanned petrophysically with a *Geotek* multisensor core-logger (MSCL; wet bulk-density, p-wave velocity, magnetic susceptibility). Then they were opened, photographed and described macroscopically. Total carbon (TC) and total inorganic carbon (TIC) were analyzed using a coulometer (*5012 Coulometer, UIC Inc. Coulometrics*) measuring the CO<sub>2</sub> content derived from beforehand freeze-dried samples by burning (TC) and acidification (TIC). Carbonate contents were calculated based on the assumption that TIC is completely formed by CaCO<sub>3</sub>. Total organic carbon (TOC) content was calculated as difference between TC and TIC. Grain size was measured through laser diffraction with a *Malvern Mastersizer 2000 Particle Analyzer*. X-ray fluorescence (XRF) core scanning at 2 mm resolution with a *COX ITRAX* core

**BGD**

7, 4715–4747, 2010

## Carbonate sedimentation around springs in Lake Ohrid

M. Matter et al.

Title Page

Abstract

Introduction

Conclusions

References

Tables

Figures

⏪

⏩

◀

▶

Back

Close

Full Screen / Esc

Printer-friendly Version

Interactive Discussion



scanner provided a non-destructive and fast way of analyzing the elemental composition of the downcore chemical profiles. Smear slides were prepared from selected depths in the cores and from trap material to analyze with a polarization microscope the composition and crystal morphology. Furthermore, particles were also analyzed with a Scanning Electron Microscope (SEM) including energy-dispersive X-ray spectroscopy (EDX) chemical analysis, in order to investigate mineralogy, morphology and origin of particles.

Chronostratigraphy of the sediment cores was determined on the basis of (i) radiocarbon analysis (measured at the Leibniz Laboratory for Radiometric Dating and Isotope Research in Kiel, Germany; Table 3) on terrestrial organic matter and (ii) using  $^{210}\text{Pb}$  and  $^{137}\text{Cs}$  activities measured with Germanium gamma detectors. Radiocarbon data were calibrated using the OxCal4.1 program and the IntCal09 data set (Bronk Ramsey, 2009; Reimer et al., 2009).

In spring 2008, a sidescan sonar survey was carried out covering the larger spring zone with a Klein 3000 dual frequency sidescan sonar operated at frequencies of 100 and 500 kHz. Individual transect covered 75 m at each side, with an overlap of about 50%. Mosaicking of profiles and target management was done using the software package Sonar Wiz.

## 4 Results

### 4.1 Sediment traps

The sediment traps were deployed on 15 May and recovered on 29 May 2007, and covered a period characterized by the absence of strong winds. After recovery, the inside of the liners and the surface of the trapped sediment were covered by algae, indicating rapid growth. All traps contained cream-colored and flocculent sediment of variable amounts (Table 2). The shallower the traps were, the less sediment they contained (Fig. 4).

**BGD**

7, 4715–4747, 2010

## Carbonate sedimentation around springs in Lake Ohrid

M. Matter et al.

Title Page

Abstract

Introduction

Conclusions

References

Tables

Figures

◀

▶

◀

▶

Back

Close

Full Screen / Esc

Printer-friendly Version

Interactive Discussion

---

## Carbonate sedimentation around springs in Lake Ohrid

M. Matter et al.

---

Title Page

Abstract

Introduction

Conclusions

References

Tables

Figures

◀

▶

◀

▶

Back

Close

Full Screen / Esc

Printer-friendly Version

Interactive Discussion



In the analyzed three trap samples (1b, 2d, 2e; Table 2; Fig. 3), carbonate content varies between 70.5 and 86.4%, TOC (after 4 d H<sub>2</sub>O<sub>2</sub> treatment for removing algal growth) between 1.4 and 6.6% (Table 2). The highest mass accumulation rate occurred in the lowest trap of mooring 2 (2e; Table 2) with 135 g m<sup>2</sup> d<sup>-1</sup>. However, as a dead fish and two leeches were collected in this trap, this value is falsified. The lowest amount of particles was accumulated in the shallowest trap of mooring 2 (trap 2a) with 0.3 g m<sup>2</sup> d<sup>-1</sup> (Table 2). In general, our data indicate that particle flux increases with water depth (Fig. 4).

Samples analyzed under the optical microscope in cross-polarized light and with the SEM/EDX allowed the characterization of the particles. Most particles were confirmed to be calcite crystals with different morphologies, ranging from perfect authigenic idiomorphic crystals (Fig. 5a) to corroded crystals or larger irregular clusters (Fig. 5b). The largest observed calcite crystals in the traps reach lengths of up to 20 μm (Fig. 5a). Large clusters of idiomorphic calcite crystals in sediment trap material can be up to 150 μm large. A large number of prominent ~1 μm large holes occur in numerous calcite crystals from the sediment traps (Fig. 5b).

## 4.2 Sediment cores

### 4.2.1 Lithologies

The sidescan sonar image confirmed the large depression forming the more active spring zone, which is separated by sharp edges from the surrounding area (Fig. 2). Inside the depression, dense patches of macrophytes were identified. At some locations directly in the spring area, coring failed due to absence of sediment so that PVC-liners broke upon hitting the exposed bedrock. Upon opening, many cores had a strong sewage smell, in particular from the topmost 5 cm.

All cores, except core 20, which originates from deeper water (Fig. 2), are composed of two main litho-stratigraphic units that are characterized by a distinct change in lithology (Figs. 6, 7, 8): the top part of the cores (Unit T; Top-unit) consists of dark-colored



(brown to dark gray) carbonate silt with abundant diatoms. The lower part of the cores (Unit L; Lower unit) is composed of brighter-colored (light gray to gray) carbonate silt that shows only minor diatom contents. Within the spring zone, this Unit L gets bright (bright beige to almost white) below 30 to 45 cm core depth, resembling lacustrine chalk. Both units are dominated by carbonate silts. Carbonate content varies between 62 to 90% in Unit T, and is higher in Unit L with values between 89 and 96% (Fig. 7), except in few coarser layers, in which carbonate content drops to 63 to 85%. The two units display different contents in organic matter as TOC in Unit L is below 1.4%, whereas Unit T, darker in color, has higher TOC values ranging from 0.3 to 3.5%. The sediments are rather homogeneous and do not show a significant lamination, except for core 05, which has a diffuse lamination. Bioturbating chironomid larvae were found in core 05 just above the transition from Unit L to Unit T. Ostracods and other carbonate shell fragments occur throughout the cores.

The magnetic susceptibility of most cores is rather constant over depth and ranges between 50 and 150 (SI units). In average, 56% silt was found in the cores, with higher values in basal core 20, where the average silt content is 87%. Two coarser layers (>60 to 70% sand) are found at depths around  $18 \pm 5$  cm and  $33 \pm 5$  cm in most cores. They are characterized by lower MSCL-density values than in the fine-grained lithologies. Besides these coarse layers, the mean grain size in both lithologic units ranges between 35 and 65  $\mu\text{m}$ . Gravel of 0.5 to 2 cm diameter was found in the lower part of cores 01, 02, 03 and 46.

Core 20, taken at 50 m depth on the eastern transect, resembles basal cores from other studies (e.g., Matzinger et al., 2007; Wagner et al., 2008; Vogel et al., 2010a) and does not particularly show the two units. Its lithology is characterized by a lower range in carbonate content (9 to 67%) and TOC values between 1 and 2%. Color ranges from dark beige to dark grey and black diffuse laminations occur. The fine lithology is dominated by a silty grain-size contributing in average 87% of the sediment with an average range between 15 and 30  $\mu\text{m}$ .

## Carbonate sedimentation around springs in Lake Ohrid

M. Matter et al.

Title Page

Abstract

Introduction

Conclusions

References

Tables

Figures

⏪

⏩

◀

▶

Back

Close

Full Screen / Esc

Printer-friendly Version

Interactive Discussion



## 4.2.2 Geochemical signatures

XRF data provide downcore elemental chemical signatures, of which Ca, Fe and Si are shown in Fig. 7, as their profiles show prominent changes in sediment composition and properties. The Ca profile is clearly correlated to the measured carbonate content (TIC). As dolomite is not formed under these in situ conditions, calcite forms the dominant sediment component, which was also confirmed in SEM images. Ca counts usually are lower in Unit T compared to Unit L, coinciding with the lower carbonate content in the upper Unit. The Si and Fe curves correlate among each other and anticorrelate with Ca. They both show a significant upcore increase at the Unit L-Unit T boundary. This increase towards higher Fe and Si values in Unit T is rather sharp and coincides with the change towards darker color with the exception of Core 12, where the change occurs below the boundary.

## 4.2.3 Particles

Idiomorphic calcite crystals and their clusters vary in length between 20 and 100  $\mu\text{m}$  (Fig. 5c, d). As in trap samples, many  $\sim 1 \mu\text{m}$  large holes occur in the calcite crystals (Fig. 5c). They are very often covered by an organic coating. Large clusters were found in most samples from Unit T, but are very rare and smaller in Unit L samples. In core 20, the deep water core, the idiomorphic crystals are smaller than 20  $\mu\text{m}$ . In most samples from Unit T, 20 to 100  $\mu\text{m}$  large calcite crystals with irregular edges were found, most probably particles that were transported by downslope currents. Indications for such downslope transport processes were also found on sidescan sonar images. This kind of calcite crystal was very rare in Unit L samples of the spring-zone cores but occurred frequently in the spring-distal cores at the edges of the transect. Diatoms frustules or remains occur in 19 out of 27 samples from Unit T, but are very rare in Unit L.

**BGD**

7, 4715–4747, 2010

### Carbonate sedimentation around springs in Lake Ohrid

M. Matter et al.

Title Page

Abstract

Introduction

Conclusions

References

Tables

Figures

◀

▶

◀

▶

Back

Close

Full Screen / Esc

Printer-friendly Version

Interactive Discussion

#### 4.2.4 Core correlations

The lithologies of the cores can be correlated along the various transects (Figs. 6 and 7). Cores 15 and 16 (in the South) as well as cores 10, 12, 13, and 49 (in the North) are from locations in shallow water that are more than 200 m away from the spring zone; they all show similar downcore sequence with a thin Unit T and an underlying Unit L containing mostly two coarse layers (Fig. 6).

Cores 08 and 14, taken at 100 m distance from the spring area, are somehow transitional between the more distal cores and the core from the spring zone (Fig. 6; Unit L was not reached in those cores). They have in the uppermost parts a similar lithology as the cores from within the spring area, but their lower part of Unit T differs from both the spring zone cores and the other more distant cores as it is coarser and with a lower carbonate content.

Cores 17 and 20 represent the eastern transect towards the lake center and greater water depths. Their lithologies show major changes compared to all shallow-water cores. In the eastern transect, Units L and T can only be defined to core 17 (Fig. 7). Core 20 from a water depth of 50 m shows no clear boundary, however, the TOC curve also indicates an upcore transition to organic-rich lithologies (Fig. 7). The cores within the spring zone (cores 01, 02, 03, 05, 46) show the general pattern of the two lithologic units. Unit T can be much thicker than outside the spring zone (Fig. 6), but lithologies are more irregular and thickness variations among the cores are larger when compared to the cores outside the zone that show a more regular succession.

#### 4.3 Age model of the cores

$^{137}\text{Cs}$  activities were measured partly at 5 mm intervals in the upper parts of five cores (5, 12, 13, 17 and 20). The measured downcore curves (Fig. 8) do not display clearly the two expected peaks in radionuclide activity, which would correspond to the climax in atmospheric nuclear bomb testing in AD 1963 and the Chernobyl accident in AD 1986 (Appleby, 2001). However, a clear downcore drop in  $^{137}\text{Cs}$  values to basically

**BGD**

7, 4715–4747, 2010

### Carbonate sedimentation around springs in Lake Ohrid

M. Matter et al.

Title Page

Abstract

Introduction

Conclusions

References

Tables

Figures

⏪

⏩

◀

▶

Back

Close

Full Screen / Esc

Printer-friendly Version

Interactive Discussion



zero occurs systematically at the Unit L-Unit T boundary, indicating that the maximum age of this boundary coincides with the onset of nuclear bomb testing in the 1955s (Appleby, 2001). The absence of two successive pulses in  $^{137}\text{Cs}$  activity can be a function of bioturbation and/or current and storm actions that prevent the shallow-water sedimentary succession to represent a continuous period.  $^{210}\text{Pb}$  values varied significantly, lacking clear downcore trends, so that they were not used to modify the age models.

Three organic macro remains of terrestrial origin from three different cores were used for radiocarbon analysis (Table 3, Fig. 6). Resulting calibrated ages (2-sigma) range from  $3487 \pm 74$  cal. yr BP at 21 cm in core 12, to  $3532 \pm 88$  cal. yr BP at 73 cm depth in core 3, and to  $6350 \pm 51$  cal. yr BP at 46 cm in core 13. These ages, all taken within Unit L, indicate either reworking of particles in Unit L sediments, or a very dynamic sedimentary environment with transport/erosion phases also in the pre-1955's section. These are probably caused by currents and/or storm activity, which both are very likely to occur for the shallow-water zone in Lake Ohrid.

The Unit L-Unit T boundary marks thus a chronostratigraphic sequence boundary separating pre-1955 AD sediments (Unit L) from post-1955 AD sediments (Unit T). Within both units, however, we expect incomplete stratigraphy as neither the  $^{137}\text{Cs}$  and  $^{210}\text{Pb}$  profiles, nor the “old” radiocarbon ages indicate regular and conformable sedimentation so that both units cannot be stratigraphically subdivided.

## 5 Discussion

### 5.1 Carbonate precipitation in Kališta spring area

Seasonal biologically induced calcite precipitation is a common effect in low to mid-latitudes and has already been observed in the deep basin of Lake Ohrid with a previous sediment-trap study (Matzinger et al., 2006b), which established that carbonate precipitation occurs mostly during summer. This study documents that sediment trap

**BGD**

7, 4715–4747, 2010

## Carbonate sedimentation around springs in Lake Ohrid

M. Matter et al.

Title Page

Abstract

Introduction

Conclusions

References

Tables

Figures

⏪

⏩

◀

▶

Back

Close

Full Screen / Esc

Printer-friendly Version

Interactive Discussion



---

## Carbonate sedimentation around springs in Lake Ohrid

M. Matter et al.

---

Title Page

Abstract

Introduction

Conclusions

References

Tables

Figures

⏪

⏩

◀

▶

Back

Close

Full Screen / Esc

Printer-friendly Version

Interactive Discussion



material from the coastal zones is characterized by higher TIC values (between 8.5 and 10.4%) compared to those measured in the deep water in the open basin (mean value of 7.8% in summer period at 50 m water depth; Matzinger et al., 2006). Assuming that no or only little carbonate dissolution occurred during the Holocene in the water column in deeper water, unlike during the Glacial epoch (Vogel et al., 2010b), the sediments deposited in the shallow Kališta site are less affected by dilution from the non-carbonate fraction, i.e. from siliciclastic constituents or from diatoms. Furthermore, the large and characteristic idiomorphic calcite crystals and their clusters observed on SEM images (Fig. 5) confirmed the efficiency of authigenic carbonate precipitation in the spring area and indicate that carbonate dissolution is negligible at least for the period recovered. Water analysis show (Table 1) that the Kališta spring water are richer in dissolved ions and in nutrients than the waters in the central lake, so that enhanced precipitation of  $\text{CaCO}_3$  due to photosynthetic activities of microorganisms and algae is likely. However, the constant cold water of the springs (colder than lake surface water in summer) might attenuate to some extent the precipitation of  $\text{CaCO}_3$ .

An indication of biological enhancements in calcite precipitation are the regular  $\sim 1 \mu\text{m}$  diameter holes that are observed in SEM images of the collected calcite crystals (Fig. 5b,c). Similar holes were identified as being related to the effect of picocyanobacteria (Dittrich et al., 2004). According to studies conducted in oligotrophic lakes (Dittrich et al., 2004; Dittrich and Obst, 2004), picocyanobacteria (or picoplankton) with cell size 0.2 to  $2 \mu\text{m}$  act as nuclei for the formation of calcite crystals. The crystals nucleate and grow around organic matrices reaching out from the cell membrane. Eventually, holes are left when the organisms dissolve. This assumption is supported by the fluorescence microscope analysis of a water sample collected on 29 September 2007 at 1 m water depth over the spring zone, which resulted in an average concentration of  $824 \times 10^3$  picocyanobacteria cells  $\text{ml}^{-1}$ . This cell count is very high, as for a comparison only  $\sim 100$  to  $300 \times 10^3$  cells  $\text{ml}^{-1}$  were counted in the epilimnion of Lake Lucerne during August and September, respectively (Dittrich et al., 2004). Similar holes in calcite crystals were also observed in authigenic precipitates of a Lake Ohrid core from

the deep basin (core Lz1084; Wagner et al., 2008) as shown by SEM images of bulk sediment, indicating similar processes also occurring in the open water even though at lower intensities.

The presence and shape of large authigenic particles in most samples from Unit T suggest that the particles are deposited in the sediment without major dissolution. The frequent occurrence of calcite particles with irregular edges also documents that some transport occurs in the shallow-water area, for instance during storms. These particles are however less frequent or absent in Unit L from the spring-area cores, suggesting that immediate authigenic calcite precipitation is in the active spring area more significant than reworking and redistribution of previously precipitated crystals.

## 5.2 Comparison with basinal cores and extent of the spring's influence

Assuming a common age of post 1955 AD for all Unit L-Unit T transitions encountered in the cores, provides the possibility to compare relative sedimentation rates for Unit T along the transects (Figs. 2, 6). The resulting rates would be lowest for having the complete post-1955 succession preserved. However, sedimentation within Unit T likely reflects the interplay between particle deposition (i.e. production through authigenic precipitation) and particle removal, as the depositional environment is shallow and highly dynamic. Comparing the thickness of Unit T reveals large variations in sedimentation rate between the cores from the spring, the littoral zone, and the deeper water (Figs. 6, 8).

In the spring zone, thickness of Unit T amounts to more than 10 cm and reaches its maximum with 28 cm in core 05. Only core 02 is characterized by the absence of Unit T sediments, which could be caused by an extreme proximity to an active spring outlet that physically prevents sedimentation through strong currents. In a distance more than 300 m away from the springs and also towards deeper water, Unit T is always thinner than 10 cm (Figs. 6, 7), reflecting the increased sedimentation rate in vicinity to the springs. Assuming a 1955 AD age of the unit boundary, sedimentation rate would be in the range of over  $5 \text{ mm yr}^{-1}$  in the spring area and less than

## Carbonate sedimentation around springs in Lake Ohrid

M. Matter et al.

Title Page

Abstract

Introduction

Conclusions

References

Tables

Figures

⏪

⏩

◀

▶

Back

Close

Full Screen / Esc

Printer-friendly Version

Interactive Discussion



2 mm yr<sup>-1</sup> outside the spring area. As the base of Unit T might be younger, sedimentation rates may be even higher. In comparison, the extrapolated deeper-water sedimentation rate from <sup>210</sup>Pb dating of the upper 10 cm of core OHR02-1 from the deep basin is ~0.9 mm yr<sup>-1</sup> (Matzinger et al., 2006b). Moreover, slightly lower sedimentation rates of ~0.5 to 1.3 mm yr<sup>-1</sup> could be calculated based on <sup>137</sup>Cs data. All these values document significantly enhanced sedimentation rates in the active spring area, not only when compared to deeper water areas but also when compared to other non-spring shallow water zones.

Figure 9 compares the TIC downcore trends in a series of cores, including those from this study and those from Matzinger et al. (2006b), which were collected in the deeper basin and towards the southern shore. It can be recognized that the carbonate content in the four cores within or close to the active spring zone is 2 to 5-times higher than the values in basinal cores. Core 20, from the eastern transect forms the transition between the shallow water spring signature and the basinal carbonate contents. Two effects may explain this difference in carbonate content: the first effect is the proximity to the shore, as surface water temperature and higher biologic activity favor carbonate precipitation. The second effect is the mineral-rich water input from sub-aquatic and littoral springs. Although no quantitative discharge values are available, the relatively large area with numerous sub-aquatic springs is likely to have an effect on local water chemistry.

The carbonate-increasing effects of the Ca<sup>2+</sup> and HCO<sub>3</sub><sup>-</sup>-rich spring waters seems, however, to be rather local, as a lakewide sediment surface survey in Lake Ohrid shows a general trend towards higher TIC values in the northern, northeastern, and south-western parts of the lake basin coinciding with areas with enhanced productivity (Vogel et al., 2010a). This study also documents the difference in TIC content of the surface sediments in the vicinity of river inflows with high and low Ca<sup>2+</sup> and HCO<sub>3</sub><sup>-</sup>-contents from carbonate or non-carbonate catchments, resulting in strong or weak rates of carbonate precipitation, respectively (Vogel et al., 2010a).

## Carbonate sedimentation around springs in Lake Ohrid

M. Matter et al.

[Title Page](#)[Abstract](#)[Introduction](#)[Conclusions](#)[References](#)[Tables](#)[Figures](#)[⏪](#)[⏩](#)[◀](#)[▶](#)[Back](#)[Close](#)[Full Screen / Esc](#)[Printer-friendly Version](#)[Interactive Discussion](#)

The similarity in TIC signatures of core 20 (50 m water depth in front of springs) and core OH05-15 (35 m depth in the southern basin lacking any spring influence) indicates that the springs have hardly any direct influence on the sedimentation at greater water depths. This can be explained by the existence of counter-clockwise surface currents, which apparently transport local influxes mainly parallel to the shore (Vogel et al., 2010a). The gradual reduction in thickness of Unit T sediments at larger distances from the springs is likely an indication for such a greater spring-influence on sedimentation along the northern and the southern transects. Part of the increased thickness of Unit T in the spring area, however, may also be caused by the bathymetric depression of the main spring zone offering more accommodation space. However, elevated thicknesses are also detectable in the entire spring area, which is not characterized by greater water depths when compared to the spring-distant coring sites where Unit T is thinnest.

### 5.3 Paleoenvironmental history

The transition from Unit L to Unit T observed in all cores, except core 20, is an indicator for major change in sedimentary conditions that likely occurred after 1955 AD. This change is expressed with a darker sediment color, an increase in TOC, a slight decrease in TIC, an increase in Fe and Si content as well as in diatom content, and a sewage smell upon core opening. All this is in concert with a significant increase of anthropogenically-induced nutrients that affect the sedimentary conditions, as it has been observed in sediment cores of many eutrophied lakes. In particular TOC is an indicator for elevated productivity, which is also confirmed by sudden appearance of large amounts of diatoms in Unit T sediments and by concurrent elevated Si counts. The rotten smell of Unit T sediments also matches water samples in the Kališta spring zone during 2006 and 2007 that indicated high values of *E. coli* and phosphomineralizing bacteria, which are indicators for anthropogenic waste waters entering the lake. In fact, expanding touristic activities in the area during the last decades and the construction of various lakefront resorts increased the potential of pollution through untreated

## Carbonate sedimentation around springs in Lake Ohrid

M. Matter et al.

Title Page

Abstract

Introduction

Conclusions

References

Tables

Figures



Back

Close

Full Screen / Esc

Printer-friendly Version

Interactive Discussion





waters (personal communication, Lence Lokoska, HBI).

The general upcore decrease in carbonate content is not only observed in the cores from this study, but can also be seen in the cores from the basin and the southern shore (Matzinger et al., 2006b), which show also a similar pattern of reduced TIC values towards the core top (Fig. 9). These patterns indicate a lakewide change in sedimentation patterns related to the same forcing mechanisms.

To which degree sedimentation processes have been influenced by a lake level regulation in 1962 (Popovska and Bonacci, 2007) remains unclear. At that time, the River Sateska, previously a direct tributary of the River Crn Drim, was deviated into Lake Ohrid and a gate on the outflow river Crn Drim was constructed in Struga (Popovska and Bonacci, 2007). This increased the incoming runoff by  $5.5 \text{ m}^3 \text{ s}^{-1}$  (~70%), however, the resulting nutrient contribution is considered to be small (Matzinger et al., 2007) and most likely not directly responsible for the observed eutrophication.

## 6 Conclusions

This study investigates and quantifies the effect of the Kališta subaquatic springs on coastal sedimentation in Lake Ohrid. The high accumulation rates of  $\text{CaCO}_3$  within the spring zone and the large idiomorphic calcite crystals and clusters found in the sediment trap material and cores indicate that the ion-rich spring water entering the lake water at the Kališta subaquatic springs significantly enhances local carbonate precipitation. These springs provide special crystallization conditions in the spring area so that sedimentation rates are higher in the vicinity of the spring zone than outside the area. Picocyanobacteria are assumed to play a crucial role in the crystallization process, as typical holes were found in the crystals and high cell concentrations were observed in the water above the springs. The different morphologies of the carbonate particles analyzed at different depths in the cores offered further clues to identify the origin of the calcite. The amount and size of authigenic calcite crystals found in cores within 200 to 300 m north and south (shore parallel) to the spring area showed the possible extent of the spring's waters influence.

## Carbonate sedimentation around springs in Lake Ohrid

M. Matter et al.

Title Page

Abstract

Introduction

Conclusions

References

Tables

Figures



Back

Close

Full Screen / Esc

Printer-friendly Version

Interactive Discussion



## Carbonate sedimentation around springs in Lake Ohrid

M. Matter et al.

Title Page

Abstract

Introduction

Conclusions

References

Tables

Figures

⏪

⏩

◀

▶

Back

Close

Full Screen / Esc

Printer-friendly Version

Interactive Discussion



Two distinct lithostratigraphic units revealed a drastic change in coastal sedimentation that occurred after AD~1955. The increase of anthropogenic nutrient input might explain the enhanced biomass production as witnessed by an increased diatom content and elevated Si-counts as well as by slightly reduced (diluted) carbonate contents, dark color and sewage smell of the freshly-opened cores. Even though similar changes also occur in deeper waters, Lake Ohrid might show a faster and more drastic response to eutrophication and human impact in its shallow waters.

*Acknowledgements.* This work was possible thanks to the long-term cooperation between the Hydrobiological Institute in Ohrid (HBI) and Eawag (Swiss Federal Institute of Aquatic Science and Technology). The project was supported through the Swiss National Science Foundation SCOPES-Grant IB7320-111082 (Subaquatic springs in ancient Lake Ohrid - assessment of ecological importance and anthropogenic change). Additional finances were provided by Eawag and ISF (Institute for Lake Research) and the German Research Foundation (WA 2109/1). We would like to thank Zoran Brdakowski, Borce Cakalovski, Dusica Ilic-Boeva, Goce Kostoski, and Zoran Spirkovski for logistic and administrative support. We thank Maria Dittrich for her help in the determination of the picocyanobacteria, Beat Müller for calculating saturation indices, Brian Sinnet for analyzing the calcite clusters under the SEM, Alois Zwysig and Ruth Stierli for their support in the laboratory and Erwin Grieder for radionuclide measurements. Manuel Kunz and Andreas Matzinger are acknowledged for providing data and background information on Lake Ohrid and its springs.

## References

- Albrecht, C. and Wilke, T.: Ancient Lake Ohrid: biodiversity and evolution, *Hydrobiologia*, 615, 103–140, 2008.
- Appleby, P. G.: Chronostratigraphic techniques in recent sediments, in: *Tracking Environmental Change Using Lake Sediments*, 1, edited by: Last, W. M. and Smol, J. P., Kluwer Academic Publishers, Dordrecht, The Netherlands, 171–201, 2001.
- Belmecheri, S., Namiotko, T., Robert, C., Grafenstein, U., and Danielopol, D. L.: Climate controlled ostracod preservation in Lake Ohrid (Albania, Macedonia), *Paleogeogr. Palaeoclimatol. Paleocol.*, 277, 236–245, 2009.

---

**Carbonate  
sedimentation  
around springs in  
Lake Ohrid**M. Matter et al.

---

[Title Page](#)[Abstract](#)[Introduction](#)[Conclusions](#)[References](#)[Tables](#)[Figures](#)[⏪](#)[⏩](#)[◀](#)[▶](#)[Back](#)[Close](#)[Full Screen / Esc](#)[Printer-friendly Version](#)[Interactive Discussion](#)

Bono, P., Dreybrodt, W., Ercole, S., Percopo, C., and Vosbeck, K.: Inorganic calcite precipitation in Tattare karstic springs (Lazio, Central Italy): field measurements and theoretical prediction on depositional rates, *Environ. Geol.*, 41, 305–313, 2001.

Bronk Ramsey, C.: Bayesian analysis of radiocarbon dates, *Radiocarbon*, 51(1), 337–360, 2009.

Cullaj, A., Hasko, A., Miho, A., Schanz, F., Brandl, H., and Bachofen, R.: The quality of Albanian natural waters and the human impact, *Environ. Int.*, 31, 133–146, 2005.

Dittrich, M., Kurz, P., and Wehrli, B.: The role of autotrophic picocyanobacteria in calcite precipitation in an oligotrophic lake, *Geomicrobiol. J.*, 21, 45–53, 2004.

Dittrich, M. and Obst, M.: Are picoplankton responsible for calcite precipitation in lakes?, *Ambio*, 33, 559–564, 2004.

Hauffe, T., Albrecht, C., Schreiber, K., Birkhofer, K., Trajanovski, S., and Wilke, T.: Spatially explicit analyses of gastropod biodiversity in ancient Lake Ohrid, *Biogeosciences Discuss.*, submitted, 2010.

Kunz, M.: Karst Springs of Lake Ohrid, Diploma thesis, Swiss Federal Institute of Technology (ETH) Zürich, Switzerland, 67 pp., 2006.

Matter, M.: Subaquatic Springs and Carbonate Precipitation in Lake Ohrid, Master thesis, Swiss Federal Institute of Technology (ETH) Zurich, Switzerland, 2007.

Matzinger, A., Jordanoski, M., Veljanoska-Sarafiloska, E., Sturm, M., Müller, B., and Wüest, A.: Is Lake Prespa jeopardizing the ecosystem of ancient Lake Ohrid?, *Hydrobiologia*, 553, 89–109, 2006a.

Matzinger, A., Schmid, M., Veljanoska-Sarafiloska, E., Patceva, S., Guseska, D., Wagner, B., Müller, B., Sturm, M., and Wüest, A.: Eutrophication of ancient Lake Ohrid: global warming amplifies detrimental effects of increased nutrient inputs, *Limnol. Oceanogr.*, 52(1), 338–353, 2007.

Matzinger, A., Spirkovski, Z., Patceva, S., and Wüest, A.: Sensitivity of ancient Lake Ohrid to local anthropogenic impacts and global warming, *J. Great Lakes Res.*, 32(1), 158–179, 2006b.

Noges, P., Kangur, K., Noges, T., Reinart, A., Simola, H., and Viljanen, M.: Highlights of large lake research and management in Europe, *Hydrobiologia*, 599, 259–276, 2008.

Plummer, L. N. and Busenberg, E.: The solubilities of calcite, aragonite and vaterite in CO<sub>2</sub>-H<sub>2</sub>O solutions between 0 and 90 °C, and an evaluation of the aqueous model for the system CaCO<sub>3</sub>-CO<sub>2</sub>-H<sub>2</sub>O, *Geochim. Cosmochim. Ac.*, 46, 1011–1040, 1982.



## Carbonate sedimentation around springs in Lake Ohrid

M. Matter et al.

Title Page

Abstract

Introduction

Conclusions

References

Tables

Figures

◀

▶

◀

▶

Back

Close

Full Screen / Esc

Printer-friendly Version

Interactive Discussion

- tephrochronological age control for the last glacial-interglacial cycle from Lake Ohrid, Albania and Macedonia, *J. Paleolimnol.*, 2010, 295–310, doi:10.1007/s10933-009-9404-x, 2010b.
- Wagner, B., Lotter, A. F., Nowaczyk, N., Reed, J. M., Schwalb, A., Sulpizio, R., Valsecchi, V., Wessels, M., and Zanchetta, G.: A 40 000-yr record of environmental change from ancient Lake Ohrid (Albania and Macedonia), *J. Paleolimnol.*, 41(3), 407–430, 2009.
- Wagner, B., Vogel, H., Zanchetta, G., and Sulpizio, R.: Environmental changes on the Balkans recorded in the sediments from lakes Prespa and Ohrid, *Biogeosciences Discuss.*, 7, 3365–3392, doi:10.5194/bgd-7-3365-2010, 2010.
- Wagner, B., Reicherter, K., Daut, G., Wessels, M., Matzinger, A., Schwalb, A., Spirkovski, Z., and Sanxhaku, M.: The potential of Lake Ohrid for long-term palaeoenvironmental reconstructions, *Paleogeogr. Palaeoclimatol. Paleoecol.*, 259, 341–356, doi:10.1016/j.palaeo.2007.10.015, 2008.
- Wagner, B., Sulpizio, R., Zanchetta, G., Wulf, S., Wessels, M., Daut, G., and Nowaczyk, N.: The last 40 ka tephrostratigraphic record of Lake Ohrid, Albania and Macedonia: a very distal archive for ash dispersal from Italian volcanoes, *J. Volcanol. Geoth. Res.*, 177(1), 71–80, 2008.
- Watzin, M. C., Puka, V., and Naumoski, T. B.: Lake Ohrid and its Watershed, State of the Environment Report. Lake Ohrid Conservation Project. Tirana, Albania and Ohrid, Macedonia, 2002.

## Carbonate sedimentation around springs in Lake Ohrid

M. Matter et al.

**Table 1.** Measured chemical and physical parameters of pure spring water from Kališta from April, May and September 2007. The samples were taken at the outlets of surface and sub-aquatic springs. Barrel, flask and plastic bag design different sampling techniques. Lake water samples were taken at different depths above the springs. Saturation indices for carbonate were calculated according to Plummer and Busenberg (1982).

	Ca <sup>2+</sup> [mg l <sup>-1</sup> ]	Ca <sup>2+</sup> [μM]	Mg <sup>2+</sup> [mg l <sup>-1</sup> ]	T P [μg l <sup>-1</sup> ]	T N Kjeldahl [mg l <sup>-1</sup> ]	Temp. [°C]	Conductivity [μS cm <sup>-1</sup> ]	pH	Alk. [mval]	Saturation index
April 3, 2007										
1 m water depth	16.3	407	7.95	3.0	347	10.0	205.2	8.4	2.28	0.28
7.5 m water depth	16.6	415	7.45	95.9	605	9.5	207.0	8.4	2.24	0.28
surface spring	33.8	844	3.52	14.6	448	11.7	344.0	7.2	3.58	-0.37
18 April 2007										
1 m water depth	25.5	637	8.36	14.0	–	11.9	206.3	8.3	2.80	0.50
spring (flask)	58.7	1465	4.04	30.3	448	10.6	240.0	7.9	2.76	0.44
15 May 2007										
1 m water depth	22.5	562	7.80	69.9	675	19.7	206.0	8.2	2.40	0.40
spring (plast.bag)	35.0	874	2.370	83.0	562	10.7	247.7	7.7	2.97	0.05
surface spring	47.8	1192	3.73	60.2	489	11.5	333.0	7.4	4.00	0.02
27 September 2007										
1 m water depth	33.8	413	2.23	0.7	320	19.3	201.0	8.4	2.10	0.40
spring (flask)	34.5	1279	3.55	2.4	630	10.7 <sup>a</sup>	245.0	7.6	3.00	0.12
surface spring	42.8	1965	3.71	0.7	528	11.7	328.0	7.4 <sup>b</sup>	4.10	0.26

<sup>a</sup> Missing in the original data. This is an average temperature from the subaquatic springs.

<sup>b</sup> Missing in the original data. This is an average pH from the subaquatic springs.

Title Page

Abstract

Introduction

Conclusions

References

Tables

Figures

◀

▶

◀

▶

Back

Close

Full Screen / Esc

Printer-friendly Version

Interactive Discussion



## Carbonate sedimentation around springs in Lake Ohrid

M. Matter et al.

**Table 2.** Sediment trap analysis: description, dry mass, TIC and TOC contents, accumulation and sedimentation rates. The trap numbers refer to moorings 1 and 2 (see Fig. 3).

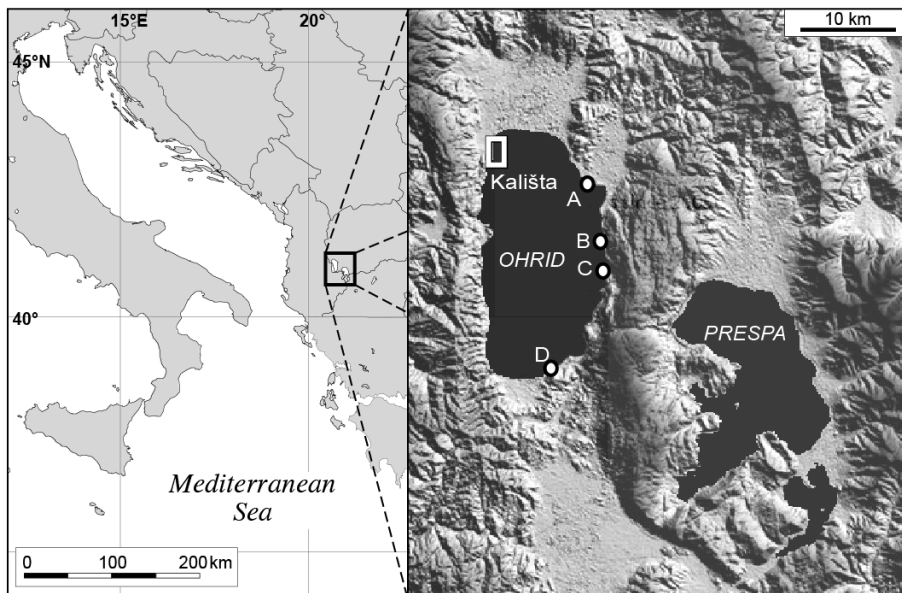
Water depth [m]	Trap no.	Fresh content	Dry mass [g]	TIC [%]	TOC [%]	Accumulation rate [ $\text{g m}^{-2} \text{d}^{-1}$ ]	Sediment. rate [ $\text{mm yr}^{-1}$ ]
3.6	1a	<1 mm sediment	0.147	–	–	0.5	0.3
5.6	1b	2–3 mm sediment	0.818	8.5	6.6	2.6	1.5
4.1	2a	<1 mm sediment, many algae	0.107	–	–	0.3	0.2
4.9	2b	~1 mm sediment, few algae	0.256	–	–	0.8	0.5
5.7	2c	~1 mm sediment, many algae	0.521	–	–	1.6	1.0
6.5	2d	~5 mm sediment, lot of algae	2.34	9.9	3.4	7.4	4.3
7.3 <sup>a</sup>	2e	~1 cm sediment, lot of algae, 1 fish and 2 leeches	42.7	10.4	1.4	135	79.1

<sup>a</sup> This data is omitted for discussion. The accumulation rate of  $135 \text{ g m}^{-2} \text{ d}^{-1}$  is an artifact: Probably not the entire sediment trapped in 2e actually sedimented, but part of it was flushed into this trap through turbulence from the surrounding lake floor.

[Title Page](#)
[Abstract](#)
[Introduction](#)
[Conclusions](#)
[References](#)
[Tables](#)
[Figures](#)
[⏪](#)
[⏩](#)
[◀](#)
[▶](#)
[Back](#)
[Close](#)
[Full Screen / Esc](#)
[Printer-friendly Version](#)
[Interactive Discussion](#)





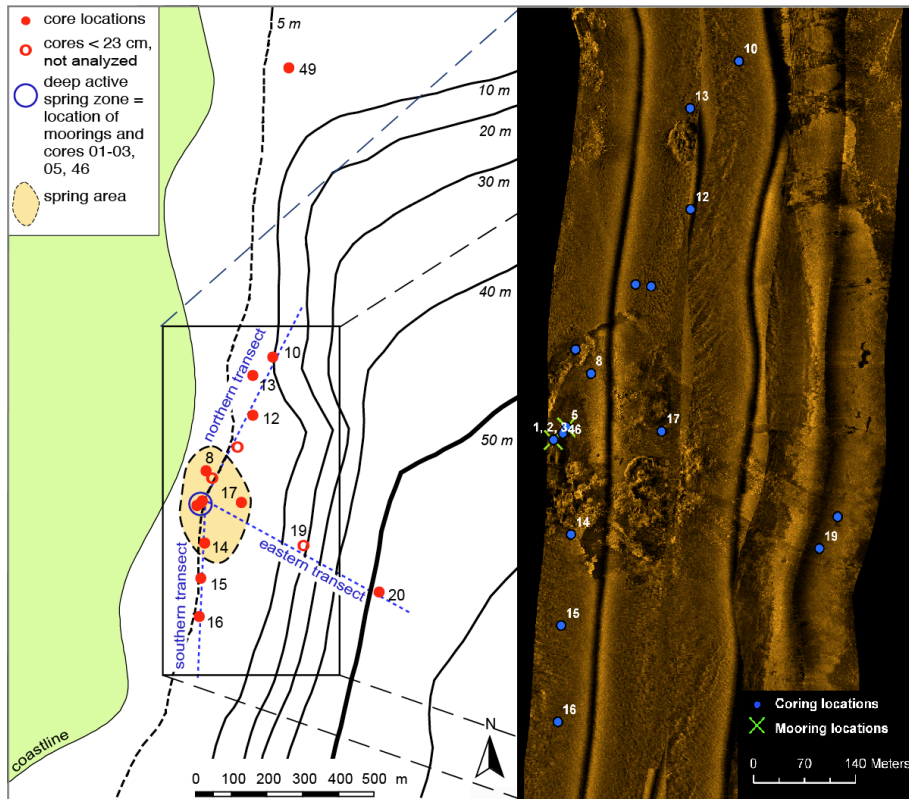



**Fig. 1.** Location and map of Lakes Ohrid and Prespa with site of the Kališta subaquatic springs in the northwestern corner of Lake Ohrid (white frame). Four white dots indicate locations of the other major subaquatic spring areas; A=Kaneo, B=Elešec, C=Velidab, D=Sveti Naum.

**Carbonate  
sedimentation  
around springs in  
Lake Ohrid**

M. Matter et al.

Title Page	
Abstract	Introduction
Conclusions	References
Tables	Figures
⏪	⏩
◀	▶
Back	Close
Full Screen / Esc	
Printer-friendly Version	
Interactive Discussion	



**Fig. 2.** Left: Map of coring transects in the vicinity of the springs with location of main spring area (orange), cores and moorings. Black lines indicate bathymetric contours referring to a lake level of 693 m a.s.l. Black rectangle coincides with area of detail map shown right. Right: Sidescan sonar image of the spring area and surroundings with mooring locations (green crosses) and coring locations (blue dots). The vertical lines mimic the ship tracks and are sidescan artifacts. Note surface roughness in spring area, indicating partly exposed bedrock and macrophyte patches.

**Carbonate  
sedimentation  
around springs in  
Lake Ohrid**

M. Matter et al.

Title Page

Abstract Introduction

Conclusions References

Tables Figures

◀ ▶

◀ ▶

Back Close

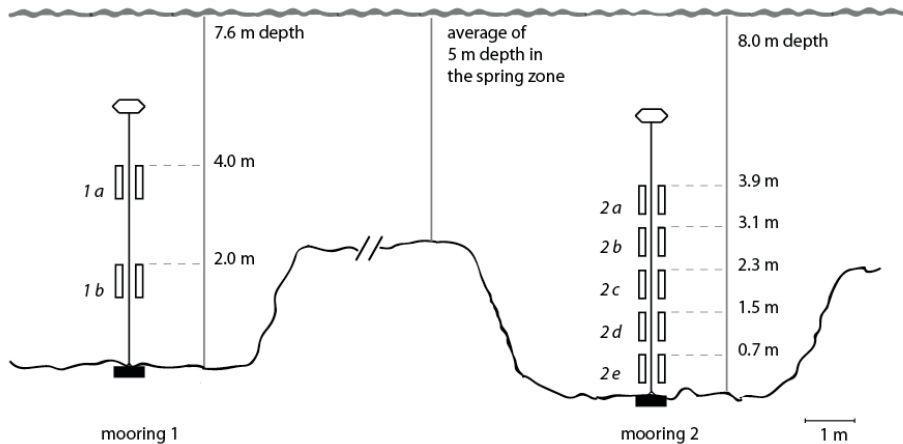
Full Screen / Esc

Printer-friendly Version

Interactive Discussion

## Carbonate sedimentation around springs in Lake Ohrid

M. Matter et al.



**Fig. 3.** Schematics of the two moorings with pairs of cylinder sediment traps (with indicated distance from ground) deployed in two local depressions in the spring zone.

Title Page

Abstract

Introduction

Conclusions

References

Tables

Figures

◀

▶

◀

▶

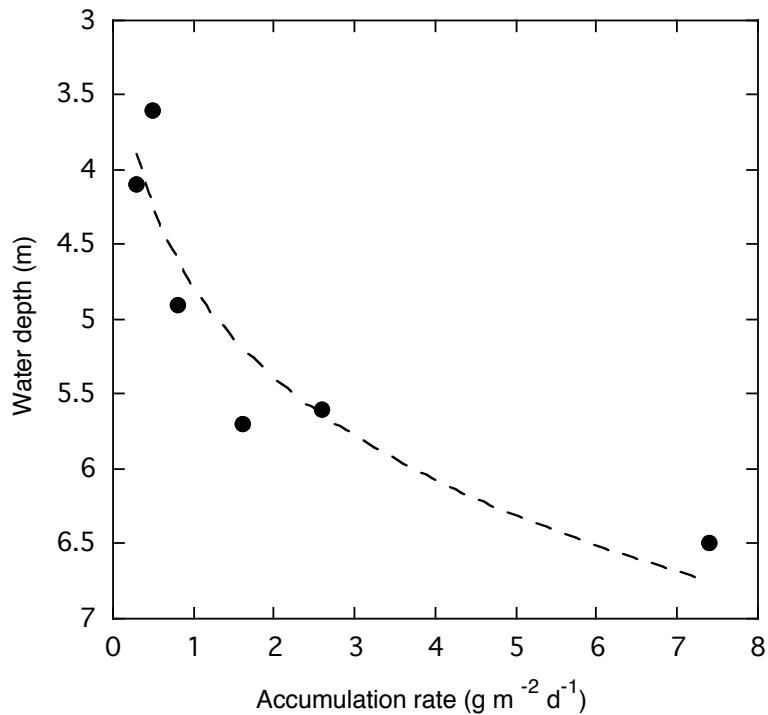
Back

Close

Full Screen / Esc

Printer-friendly Version

Interactive Discussion



**Fig. 4.** Mass accumulation rates as a function of water depth of individual traps calculated for the period 15–29 May 2007. Dashed line represents best fit for visual guide.

**Carbonate  
sedimentation  
around springs in  
Lake Ohrid**

M. Matter et al.

Title Page

Abstract Introduction

Conclusions References

Tables Figures

⏪ ⏩

◀ ▶

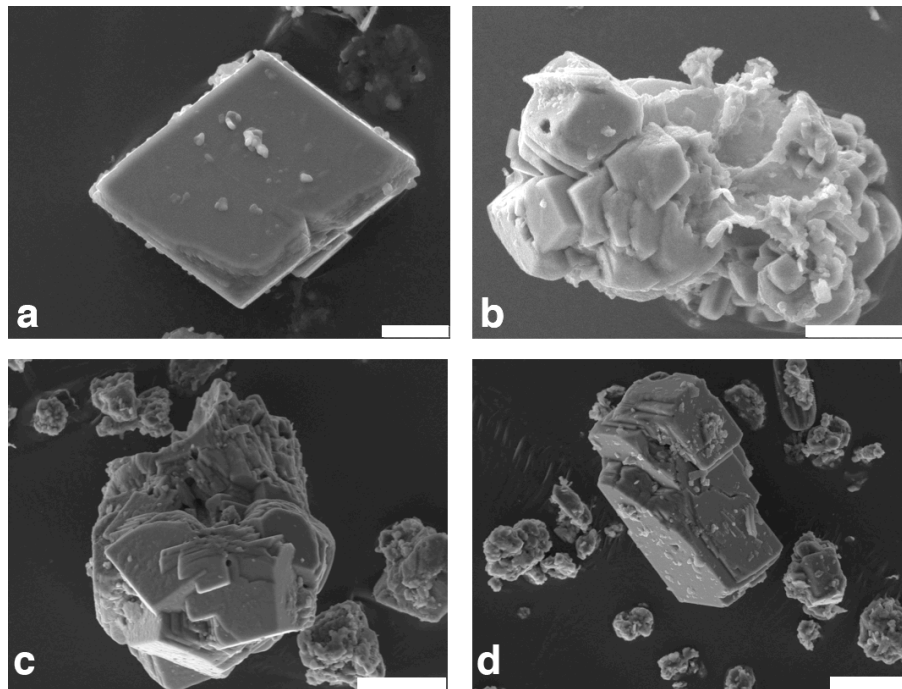
Back Close

Full Screen / Esc

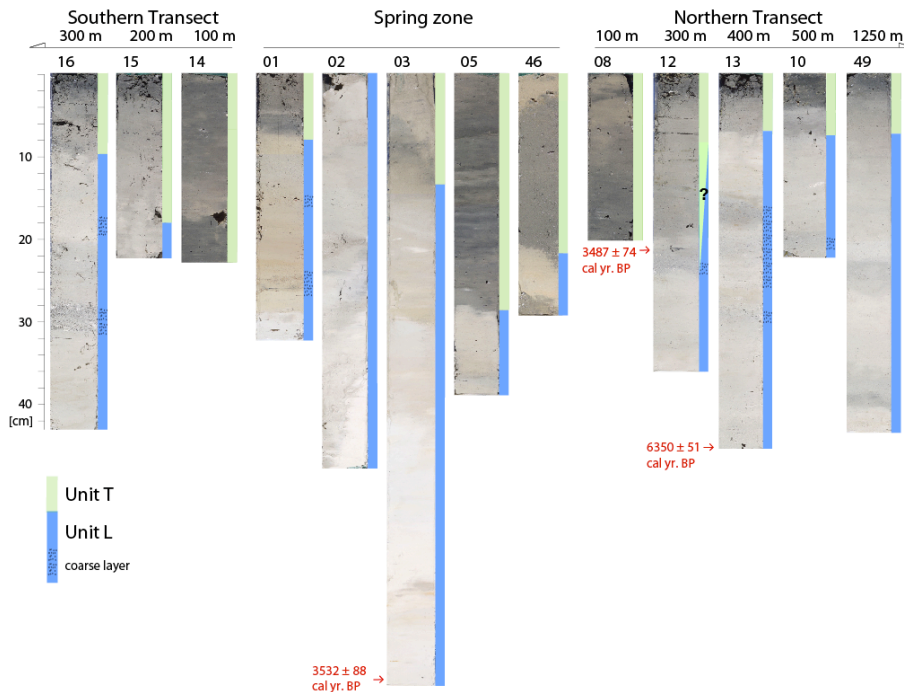
Printer-friendly Version

Interactive Discussion





**Fig. 5.** SEM images from carbonate crystals: **(a)** authigenic calcite crystals from sediment trap 2d (mooring 2, at 6.5 m depth; bar length=5  $\mu\text{m}$ ); **(b)** large idiomorphic calcite crystal clusters from trap 1b (mooring 1, at 5.6 m depth). Note the hole from cyanobacteria-mediated crystallization (bar length=10  $\mu\text{m}$ ); **(c)** large idiomorphic calcite crystal cluster from core 08 at 15 cm depth, recovered  $\sim$ 100 m away from the spring zone (bar length=20  $\mu\text{m}$ ). Note similar holes as in (b); **(d)** large idiomorphic calcite crystal clusters from core 05 at 15 cm depth recovered in the spring zone (bar length=20  $\mu\text{m}$ ).



**Fig. 6.** Photographs of the cores from the northern and southern transects, as well as the subaquatic spring zone (middle). For location see corresponding core number in Fig. 2. Color bars to the right of core photographs indicate lithologic units T (green) and L (blue).

**Carbonate  
sedimentation  
around springs in  
Lake Ohrid**

M. Matter et al.

Title Page

Abstract Introduction

Conclusions References

Tables Figures

◀ ▶

◀ ▶

Back Close

Full Screen / Esc

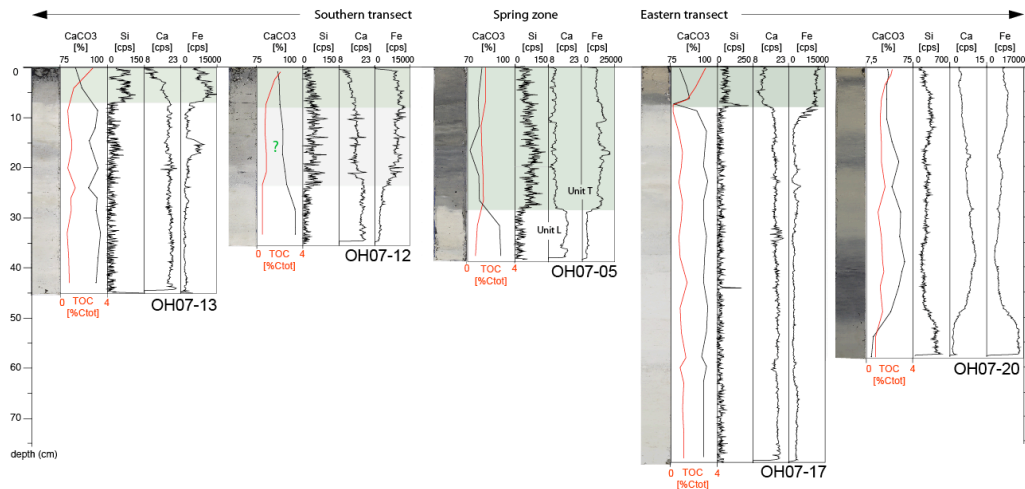
Printer-friendly Version

Interactive Discussion



## Carbonate sedimentation around springs in Lake Ohrid

M. Matter et al.



**Fig. 7.** Geochemical profiles (carbonate content, total organic carbon (TOC), XRF-counts of Si, Ca, and Fe) of cores 13, 12, 05, 17 and 20 together with core photographs. Green shades indicate Unit T. Note geochemical changes across Unit L-Unit T boundary. Unit assignment in core 12 is not straightforward as indicated with question mark.

Title Page

Abstract

Introduction

Conclusions

References

Tables

Figures

◀

▶

◀

▶

Back

Close

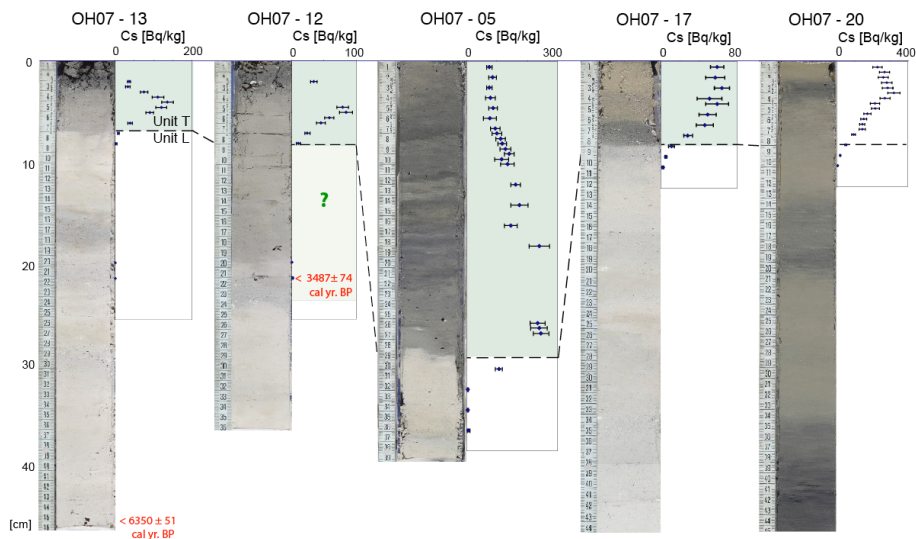
Full Screen / Esc

Printer-friendly Version

Interactive Discussion

## Carbonate sedimentation around springs in Lake Ohrid

M. Matter et al.



**Fig. 8.** Photographs and  $^{137}\text{Cs}$  activities of selected cores. Green shade indicates Unit T. Note the absence of  $^{137}\text{Cs}$  just below the Unit L–Unit T boundary. Red numbers indicate radiocarbon ages (Table 3). Unit assignment in core 12 is not straightforward as indicated with question mark.

Title Page

Abstract

Introduction

Conclusions

References

Tables

Figures

◀

▶

◀

▶

Back

Close

Full Screen / Esc

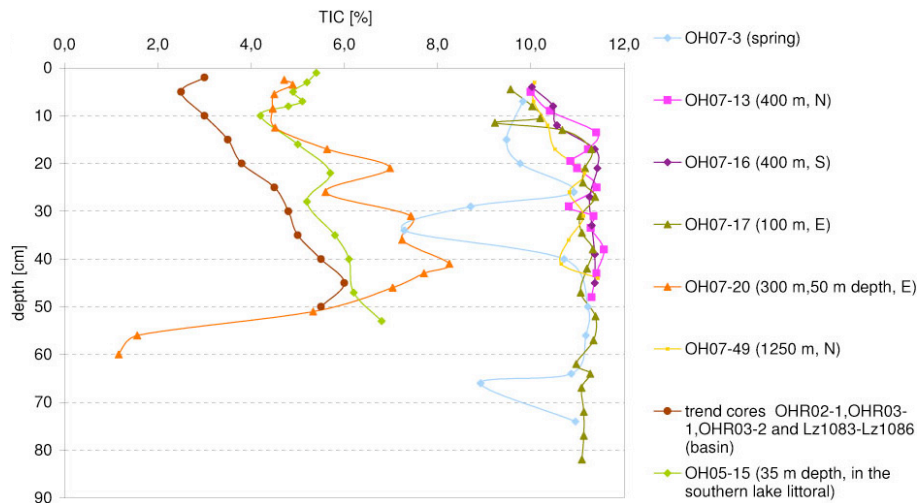
Printer-friendly Version

Interactive Discussion



## Carbonate sedimentation around springs in Lake Ohrid

M. Matter et al.



**Fig. 9.** Comparison of downcore profile of total inorganic carbon TIC (as measure of carbonate content) of the littoral cores 03, 13, 16, 17, 20, 49 from this study with data from basinal cores (OHR02-1, OHR03-1, OHR03-2 and Lz1083 to Lz1086; Matzinger et al., 2006a) and of core OH05-15 recovered in 35 m water depth in the southern littoral basin, at ~1 km distance from the shore. The two minima of core OH07-3 correspond to coarser sediment lithologies. Note the general trend of upcore decreasing TIC values in most cores independent on their water depth.

[Title Page](#)
[Abstract](#)
[Introduction](#)
[Conclusions](#)
[References](#)
[Tables](#)
[Figures](#)
[◀](#)
[▶](#)
[◀](#)
[▶](#)
[Back](#)
[Close](#)
[Full Screen / Esc](#)
[Printer-friendly Version](#)
[Interactive Discussion](#)