

**Contribution of  
riverine nutrients to  
the silicon  
biogeochemistry**

C. Y. Bernard et al.

# Contribution of riverine nutrients to the silicon biogeochemistry of the global ocean – a model study

C. Y. Bernard<sup>1</sup>, H. H. Dürr<sup>2</sup>, C. Heinze<sup>1</sup>, J. Segschneider<sup>3</sup>, and E. Maier-Reimer<sup>3</sup>

<sup>1</sup>Bjerknes Centre for Climate Research, Geophysical Institute, University of Bergen, Allégaten 70, 5007 Bergen, Norway

<sup>2</sup>Department of Physical Geography, Faculty of Geosciences, Utrecht University, Utrecht, The Netherlands

<sup>3</sup>Max-Planck-Institute for Meteorology, 20146 Hamburg, Germany

Received: 17 June 2010 – Accepted: 17 June 2010 – Published: 25 June 2010

Correspondence to: C. Y. Bernard (christophe.bernard@bjerknes.uib.no)

Published by Copernicus Publications on behalf of the European Geosciences Union.

Title Page

Abstract

Introduction

Conclusions

References

Tables

Figures

⏪

⏩

◀

▶

Back

Close

Full Screen / Esc

Printer-friendly Version

Interactive Discussion

## Abstract

Continental shelf seas are known to support a large fraction of the global primary production. Yet, continental shelf areas are mostly ignored or neglected in global biogeochemical models. A number of processes that control the transfer of dissolved nutrients from rivers to the open ocean remain poorly understood. This applies in particular to dissolved silica which drives the growth of diatoms that form a large part of the phytoplankton biomass and are thus an important contributor to export production of carbon.

Here, the representation of the biogeochemical cycling along continents is improved by coupling a high resolution database of riverine fluxes of nutrients to the global biogeochemical ocean general circulation model HAMOCC5-OM. Focusing on silicon (Si), but including the whole suite of nutrients – carbon (C), nitrogen (N) and phosphorus (P) in various forms – inputs are implemented in the model at coastal coupling points using the COSCAT global database of 156 mega-river-ensemble catchments from Meybeck et al. (2006). The catchments connect to the ocean through coastal segments according to three sets of criteria: natural limits, continental shelf topography, and geophysical dynamics.

According to the model the largest effects on nutrient concentrations occur in hot spots such as the Amazon plume, the Arctic – with high nutrient inputs in relation to its total volume, and areas that encounter the largest increase in human activity, e.g., Southern Asia.

## 1 Introduction

Continental shelf seas play a crucial role in biogeochemical fluxes from the continents to the open ocean; they are known to support a large part of the global primary production (Conley et al., 1993; Rabouille et al., 2001), they make up for only 8% of the ocean surface but 25% of the ocean primary production (Ver et al., 1999). They are also highly sensitive to human perturbations (Ver et al., 1999). The high level of production

**BGD**

7, 4919–4951, 2010

### Contribution of riverine nutrients to the silicon biogeochemistry

C. Y. Bernard et al.

Title Page

Abstract

Introduction

Conclusions

References

Tables

Figures

⏪

⏩

◀

▶

Back

Close

Full Screen / Esc

Printer-friendly Version

Interactive Discussion





---

**Contribution of  
riverine nutrients to  
the silicon  
biogeochemistry**C. Y. Bernard et al.

---

[Title Page](#)[Abstract](#)[Introduction](#)[Conclusions](#)[References](#)[Tables](#)[Figures](#)[Back](#)[Close](#)[Full Screen / Esc](#)[Printer-friendly Version](#)[Interactive Discussion](#)

system is more complex on the continental shelf: first the sinking process is highly modified by eddies, then interaction of bathymetry with waves and tidal currents can lead to the resuspension of deposited organic matter, wind along the shore creates upwelling that brings nutrient rich waters rapidly back to the surface. Furthermore, many coastal waters receive continuous fluxes of nutrients from the rivers. The riverine inputs are difficult to take into account in models because of the lack of data for thousands of smaller rivers, which in total can contribute a significant amount of nutrients. A comprehensive work of data integration is necessary to build up a database covering the entire world, and not only limited to the major rivers. This new generation of database is now made available: Dürr et al. (2009), Meybeck et al. (2006), the Global-NEWS project (Seitzinger et al., 2005).

Detailed regional models succeed in describing the progressive transfer of nutrients from estuarine areas to the adjacent sea (Rabalais et al., 1996; Kroeze and Seitzinger, 1998), but only few efforts, mostly through global box modelling (Ver et al., 1999), have been made to study the land/ocean coupling at the global scale (Da Cunha et al., 2007). Satellite-derived estimates of the chlorophyll concentration give evidence of high primary production in coastal areas, while global models still fail to reproduce the belts of high chlorophyll concentration along the continents (Longhurst et al., 1995; Yool and Fasham, 2001). Regional studies have tried to show the link between the reduction/increase of primary production and changes in nutrient ratios as for example in the East China Sea after the Three Gorges Dam across the Yangtze River was built (Gong et al., 2006). An increasing number of regions of the world (e.g., Chesapeake Bay, Northern Adriatic Sea, Gulf of Mexico) have seen their jellyfish biomass increased, supported by an increasing riverine nutrient load due to human activity (crops fertilization and urban sewage) (Graham, 2001; Purcell et al., 1999).

As shown by Humborg et al. (2000), changes in N:Si and P:Si alter biogeochemistry and aquatic food webs in coastal marine environments since diatoms need silica to build up their siliceous frustules, and, in many coastal ecosystems, diatoms are the dominant phytoplankton species and the basic element of the food web.



discuss the features relevant for the study presented here, a complete description of HAMOCC5 and MPI-OM are available on internet (see the Technical descriptions, Maier-Reimer et al., 2005).

HAMOCC5 is a NPZD (Nutrient Plankton Zooplankton Detritus) model with one phytoplankton and one zooplankton box, photosynthesis is co-limited by N, P and Fe (Aumont et al., 2003), and is driven by the same radiation values as the MPI-OM. Temperature and salinity from MPI-OM are used to calculate chemical transformation rates and constants. In the surface layer, nitrate ( $\text{NO}_3$ ), is linked to phosphate ( $\text{PO}_4$ ) by the Redfield ratio and is computed simply following the phosphate dynamics, multiplied by a constant stoichiometric ratio,  $R_{\text{N:P}}$ . There is no variation of the internal N:P ratio of particulate or dissolved constituents from surface layer processes. HAMOCC5 simulates processes of denitrification and N-fixation, formation of calcium carbonate due to coccolithophorides as well as foraminifera and opaline shells from diatom growth, sinking of detritus and marine snow, uptake and release of dissolved iron by biogenic particles, as well as atmospheric dust deposition and sinking (Maier-Reimer et al., 2005). Since the focus of this study is the riverine input of DSi, it is assumed here that there is no aeolian input of dissolved silica (only iron and clay). The atmospheric compartments allowed the computation of gases such as  $\text{CO}_2$ ,  $\text{O}_2$  and  $\text{N}_2$  and their fluxes at the air-sea surface interface. In this version atmospheric carbon concentration is set to its preindustrial concentration, as are the riverine DSi inputs.

Phytoplankton growth depends on the availability of light and nutrients. The local light supply is calculated from the temporally and spatially varying solar radiation at the sea surface. Beneath the surface, light intensity decreases with depth due to attenuation by sea water and chlorophyll.

The phytoplankton growth is assimilated to an amount of organic phosphorous (P) and is driven by the light availability and the limiting nutrient, Eqs. (1) and (2), which is defined as the least available nutrient (phosphate, nitrate, or iron). Assuming that phytoplankton takes up P, N, and Fe in constant proportions determined by the Redfield ratios, the potential limiting effect of each nutrient correspond to the concentration of

**BGD**

7, 4919–4951, 2010

## Contribution of riverine nutrients to the silicon biogeochemistry

C. Y. Bernard et al.

Title Page

Abstract

Introduction

Conclusions

References

Tables

Figures

⏪

⏩

◀

▶

Back

Close

Full Screen / Esc

Printer-friendly Version

Interactive Discussion

each nutrient multiplied by a stoichiometric coefficient:  $1/R_{N:P}$  and  $1/R_{Fe:P}$ , Eq. (2).

$$\text{Photosynthesis} = \text{Phy} \cdot L(z, t) \cdot \frac{X}{K_{\text{Phy}}^{\text{PO}_4} + X} \quad (1)$$

With

Phy: phytoplankton

$K_{\text{Phy}}^{\text{PO}_4}$ : half-saturation constant for phosphate uptake

$L(z; t)$ : light availability

$$X = \min \left( [\text{PO}_4], \frac{[\text{NO}_3]}{R_{N:P}}, \frac{[\text{Fe}]}{R_{Fe:P}} \right) \quad (2)$$

The predation of zooplankton on the phytoplankton transfers a part of the organic matter produced by the photosynthesis into the zooplankton biomass. During the ingestion of this organic matter, a fraction is immediately released in water (as faecal pellets) and forms the detritus fraction (det). The remaining fraction supports zooplankton growth. The metabolism of zooplankton and phytoplankton produces waste that is excreted in the form of dissolved organic matter (DOM). The zooplankton and phytoplankton mortality returns organic matter to the water column and forms the detritus fraction that will sink to the deep ocean. To summarise, the detritus originates from dead phytoplankton, dead zooplankton and faecal pellets from the zooplankton predation on phytoplankton. At this step the model calculates the opal and the calcium carbonate production as the two fractions of the non living part of the detritus, the shells.

It is assumed that phytoplankton consists of diatoms, coccolithophorids, and flagellates. As diatoms are known to be the fastest competitors (Egge and Aksnes, 1992), opal production by diatoms is computed first in the time loop if silica is available.

Opal production is computed from the detritus production as:

$$\text{Prod}_{\text{opal}} = \min \left( \frac{\Delta \text{det}}{\Delta t} R_{\text{Si:P}} \frac{\text{DSi}}{K_{\text{Phy}}^{\text{DSi}} + \text{DSi}}, 0.5 \text{DSi} \right) \quad (3)$$

4925

**Contribution of riverine nutrients to the silicon biogeochemistry**

C. Y. Bernard et al.

Title Page

Abstract

Introduction

Conclusions

References

Tables

Figures

⏪

⏩

◀

▶

Back

Close

Full Screen / Esc

Printer-friendly Version

Interactive Discussion



and is limited to half of the available dissolved silica (0.5DSi).

Where:

$R_{\text{Si:P}}$ : required Si:P ratio by diatoms

5  $K_{\text{phy}}^{\text{DSi}}$ : half-saturation constant for silica uptake

$\frac{\Delta_{\text{det}}}{\Delta t}$ : detritus production by plankton

DSi: dissolved silica concentration

The calcium carbonate fraction is computed after as shown in Eq. (4).

$$10 \text{ Prod}_{\text{CaCO}_3} = R_{\text{Ca:P}} \frac{\Delta_{\text{det}}}{\Delta t} \frac{K_{\text{PHY}}^{\text{DSi}}}{K_{\text{PHY}}^{\text{DSi}} + \text{DSi}} \quad (4)$$

$R_{\text{Ca:P}}$ : required  $\text{CaCO}_3$ :P ratio by phytoplankton

Opal production ( $\text{Prod}_{\text{opal}}$ ) consumes dissolved silica (DSi). The dissolution of opal depends on temperature and follows a constant dissolution rate,  $\lambda_{\text{opal:DSi}}$ .

$$15 \frac{\Delta_{\text{opal}}}{\Delta t} = +\text{Prod}_{\text{opal}} - \lambda_{\text{opal:DSi}} \cdot 0.1 \cdot (T + 3) \cdot \text{Opal} \quad (5)$$

$$\frac{\Delta \text{DSi}}{\Delta t} = -\text{Prod}_{\text{opal}} + \lambda_{\text{opal:DSi}} \cdot 0.1 \cdot (T + 3) \cdot \text{Opal} \quad (6)$$

With  $T$ : temperature

20 The flux of particles through the water column redistributes phosphorous, silica and associated tracers along the sinking part, enriching the deep waters in nutrients. Particles have constant sinking speeds,  $w_{\text{DET}}$ ,  $w_{\text{CaCO}_3}$ ,  $w_{\text{opal}}$  and  $w_{\text{Dust}}$  for organic detritus,  $\text{CaCO}_3$ , opal and clay, respectively. The export production is computed as the material leaving the euphotic layer, i.e. 90 m depth of the surface ocean, separately for opal and



CaCO<sub>3</sub>. Remineralisation of opal and CaCO<sub>3</sub> occurs all along the sinking of particles after they left the euphotic layer. Fluxes from the bottom layer in each grid cell provide the boundary condition for the sediment module that includes 4 sediment weight fractions and 12 layers following Heinze et al. (1999). The sediment module computes the accumulation of the deposited material on the sea floor as well as processes of remineralization in the sediments and the release of redissolved tracers to the lowest level of the water column.

The model is forced with NCEP based climatology (National Centers for Environmental Prediction). Dust deposition was generated by the National Center for Atmospheric Research's Community Climate System Model for the current climate, they have been shown to be consistent with present day satellite and deposition data (Mahowald et al., 2006).

## 2.2 Initial conditions and model spin-up

The model was run for a 2400 years spin-up from a homogeneous distribution of the 18 tracers in the water column after 600 years of spin-up of the global circulation model. After 2400 years the simulated distribution of tracers is consistent with observed surface map concentrations and cross sections of the Pacific, Atlantic and Indian Oceans. The coupling of the riverine fluxes of nutrients to the HAMOCC5 model is then integrated on a 100 years time period (900 CPU h per run). The MPI mode of the model currently runs on a distributed shared-memory system of IBM p575+ nodes interconnected with a high-bandwidth low-latency switch network (HPS). Each simulated year takes 35 min running on 16 processors for a total of 9 CPU h per simulated year.

## 2.3 River nutrient databases

We use current state-of-the-art datasets for riverine nutrient exports in different forms (Table 1), as established for the reference year 1995 (for C, N, P except DIC) by the Global-NEWS project (Seitzinger et al., 2005); we used the merged and slightly

**BGD**

7, 4919–4951, 2010

### Contribution of riverine nutrients to the silicon biogeochemistry

C. Y. Bernard et al.

Title Page

Abstract

Introduction

Conclusions

References

Tables

Figures

⏪

⏩

◀

▶

Back

Close

Full Screen / Esc

Printer-friendly Version

Interactive Discussion





interannual variability. However, such information progressively becomes available and will be incorporated in later versions of the model. The freshwater riverine input are provided by the default MPI-OM set up. This was done in order to avoid an expensive new model spin-up.

5 The model code relies on the Redfield ratio, i.e. nutrient uptake occurs according to a 122:16:1 C:N:P ratio. The same applies to the remineralisation process.

The data of riverine nutrient fluxes included dissolved organic nitrogen, phosphorous and carbon (DON, DOP and DOC). The dissolved organic matter (DOM) was regarded as the least available organic element (either phosphate or carbon):

$$10 \text{ DOM} = \min\left(\text{DOP}, \frac{\text{DON}}{16}, \frac{\text{DOC}}{122}\right) \quad (7)$$

The dissolved organic element in excess with regard to the Redfield ratio was added under its inorganic form, for example in the case P is the least available nutrient (either phosphate or nitrate, see Eqs. 8 and 9).

$$F_{\text{DIN}} = \text{DIN} + (\text{DON} - 16 \cdot \text{DOP}) \quad (8)$$

15 While,

$$F_{\text{DIC}} = \text{DIC} + (\text{DOC} - 122 \cdot \text{DOP}) \quad (9)$$

The same approach was applied to particulate matter.

### 3 Global results, silicic acid concentration

20 Mapping the silicic acid concentration of the ocean surface shows four major hotspots (Fig. 2d) when comparing the run with riverine silicon loads (Fig. 2b) to the run without (Fig. 2a): the Arctic Ocean, the Eastern Gulf of Guinea (coast of Cameroon, Gabon, Congo and Angola), the Amazon plume and South-Eastern Asia (Fig. 2d). The total

**BGD**

7, 4919–4951, 2010

## Contribution of riverine nutrients to the silicon biogeochemistry

C. Y. Bernard et al.

Title Page

Abstract

Introduction

Conclusions

References

Tables

Figures

⏪

⏩

◀

▶

Back

Close

Full Screen / Esc

Printer-friendly Version

Interactive Discussion



flux of 6.2 Tmol of silicon per year (or 371 Mt SiO<sub>2</sub> per year) is in agreement with earlier estimates of 6.1±2.0 Tmol of silicon per year (Tréguer et al., 1995).

In the Arctic Ocean, the largest effect of the riverine silica occurs along the Siberian coast where rivers that drain the Siberian plateau annually release 0.25 Tmol Si (15 Mt SiO<sub>2</sub>), this results in a 15 μmol l<sup>-1</sup> increase of the dissolved silica concentration (Fig. 2d). In the Eastern Gulf of Guinea, the largest river in Western Central Africa, the Congo River (21 Mt SiO<sub>2</sub> yr<sup>-1</sup> or 3.5 Tmol Si yr<sup>-1</sup>) contributes to a 5 to 10 μmol l<sup>-1</sup> increase of the silicic acid concentration all along the 1000 km coastline from its mouth to the coast of Cameroon, extending the silica supply from the Benguela upwelling system. Across the Atlantic Ocean, at the same latitude, the Amazon releases 0.94 Tmol Si per year, more than 15% of the global land-ocean flux of silica, 1.1 Tmol Si per year, together with the Orinoco River (0.16 Tmol Si per year). Combined, the Orinoco and Amazon load is the strongest input of silica to the open ocean and can be traced all along its plume drifting north west sustaining a 10 μmol l<sup>-1</sup> excess concentration into the Caribbean. The plume of the Amazon drifts north-west along the north coast of South America and mixes in the Gulf of Mexico with the waters from the Mississippi. The time series in Fig. 4 show the annual cycle of nutrients, photosynthesis, opal and calcium carbonate production on an integrated ocean surface of 1.74×10<sup>6</sup> km<sup>2</sup> adjacent to the Amazon mouth. Despite the distance from the coast, the comparison of the two runs with/without riverine nutrients clearly shows a large increase of photosynthesis maximum when riverine nutrients are added (0.05 and 0.025 mmol P l<sup>-1</sup> d<sup>-1</sup>), accompanied by a more significant increase of opal production than calcium carbonate production. The run with all nutrients except DSi shows a large increase of the calcium carbonate production while the opal production is unchanged due to DSi limitation. The calcium carbonate production benefits from the low dissolved silica concentration through the silica limitation of opal production. The other river plume hot spots show similar behaviour.

The major hotspot of dissolved silica release to the ocean is located in South-Eastern Asia (Fig. 2b and d). The Ganges River and its neighbouring smaller rivers support an

**BGD**

7, 4919–4951, 2010

## Contribution of riverine nutrients to the silicon biogeochemistry

C. Y. Bernard et al.

Title Page

Abstract

Introduction

Conclusions

References

Tables

Figures

⏪

⏩

◀

▶

Back

Close

Full Screen / Esc

Printer-friendly Version

Interactive Discussion

annual input of 0.4 Tmol Si (or 23.32 Mt SiO<sub>2</sub>) to the Bay of Bengal. Not as strong, but on a larger spatial scale, the coastline of the Indonesian archipelago receives the equivalent of the Amazon's load; with the Mekong River (21 Mt SiO<sub>2</sub> or 0.35 Tmol Si per year), Indonesia and Malaysia (21.4 Mt SiO<sub>2</sub> or 0.36 Tmol Si per year). The dissolved silica concentration rises by about 20 μmol l<sup>-1</sup> Si in the Java Sea, between Indonesia, Sumatra and Java, but these numbers should be considered with caution as this sea basin does not account for more than a few model cells. The weak simulated advection of tracers could artificially increase the accumulation process locally.

The open ocean also benefits from the riverine input of silica. Figure 2d shows an increased silicic acid concentration of a few μmol l<sup>-1</sup> on large surfaces of the Equatorial East Pacific Ocean and in the North Pacific Ocean. The Congo River raises the Eastern South Atlantic surface silicic acid concentration by 2 μmol l<sup>-1</sup>, which is significant for such a low Si-concentration area.

The silica concentration shows local accumulation processes but opal production better describes the utilisation of the silica provided by the continent through rock weathering. Delivery of silica by rivers increases the concentration, while phytoplankton utilization decreases the concentration. Where these two processes are not in balance there is either accumulation or depletion of the dissolved silica. As shown on Fig. 3, there is no photosynthesis in the Arctic Ocean because of sea ice. The photosynthesis is not responding to changes in riverine inputs of silica for the simple reason that if diatom growth is limited by silica availability it is replaced by calcium carbonate production which leaves the annual primary production unchanged. In the model code, the photosynthesis only depends on light availability, phytoplankton and the limiting nutrient (phosphate, nitrate or iron). It is therefore interesting to note that hotspots of riverine silica inputs (Fig. 2d) are mainly located in highly productive areas (Fig. 3) for two different reasons: i) the nutrient availability supplied by the river itself (Amazon plume, Fig. 4) and ii) in some cases the vicinity of coastal upwelling (southwest coast of Africa). In this case the riverine silica mixes with the silica-enriched waters of the upwelling, and both contributions work in synergy to maintain a high level of silica

**BGD**

7, 4919–4951, 2010

## Contribution of riverine nutrients to the silicon biogeochemistry

C. Y. Bernard et al.

Title Page

Abstract

Introduction

Conclusions

References

Tables

Figures

⏪

⏩

◀

▶

Back

Close

Full Screen / Esc

Printer-friendly Version

Interactive Discussion

concentration. The situation is slightly different in the Indonesian archipelago. Despite a large riverine input of N and P, the iron limitation driving the photosynthesis of most of the Pacific Ocean (Behrenfeld et al., 1996) maintains photosynthesis below a few moles of  $P\ m^{-2}\ yr^{-1}$ .

5 The opal export production is the flux of opal that exits the euphotic layer (set to 90 m depth in the model code). Two main areas of the global oceans show a significant increase of the vertical export of silica via opal export: the Amazon plume including the Caribbean Sea and the Gulf of Mexico and South-Eastern Asia. The strongest increase of opal export production is due to the Amazon and Orinoco rivers. These  
10 two rivers alone contribute to maintain an annual opal export of up to a  $0.8\ mol\ Si\ m^{-2}$  along the north coast of South America (Fig. 5). This large input of silica ( $1.1\ Tmol\ Si$  per year) enhances diatom growth and opal export as far as the Caribbean Sea, and mixes its signal with the input of the Mississippi River in the Gulf of Mexico. The second area where riverine silica significantly increases opal export covers a large part of  
15 the East Indian Ocean between Australia and South-Eastern Asia. The annual opal export production is enhanced by  $0.2\ mol\ Si\ m^{-2}$  all around Indonesia. The riverine contribution reaches its maximum along the coast of India and Burma where the annual opal export production locally increases by  $0.5\ mol\ Si\ m^{-2}$ .

## 4 Discussion

20 Rivers are the most significant input of silicic acid for the global ocean (Tréguer et al., 1995), thus also in our model and are assumed to balance the burial/redissolution of opal in the sediment (in a steady state ocean, Tréguer et al., 1995). Atmospheric silica inputs such as dust deposition and dissolved silicic acid in rain are not considered here. We assume that deposited aeolian silica would be deposited as sand particle  
25 whose sinking speed would not allow any major dissolution resulting in a significant

**BGD**

7, 4919–4951, 2010

### Contribution of riverine nutrients to the silicon biogeochemistry

C. Y. Bernard et al.

Title Page

Abstract

Introduction

Conclusions

References

Tables

Figures

⏪

⏩

◀

▶

Back

Close

Full Screen / Esc

Printer-friendly Version

Interactive Discussion

---

**Contribution of  
riverine nutrients to  
the silicon  
biogeochemistry**C. Y. Bernard et al.

---

[Title Page](#)[Abstract](#)[Introduction](#)[Conclusions](#)[References](#)[Tables](#)[Figures](#)[⏪](#)[⏩](#)[◀](#)[▶](#)[Back](#)[Close](#)[Full Screen / Esc](#)[Printer-friendly Version](#)[Interactive Discussion](#)

input of silicic acid (Johnson et al., 2006). Previous studies range aeolian DSi input from 0.20 to 0.18 Tmol yr<sup>-1</sup> (Da Cunha et al., 2007; Moore et al., 2002). This is one order of magnitude lower than the riverine silica input. These numbers are based on a dissolution rate of 7.5% of the silica contained in the dust particles (Moore et al., 2001) and are in agreement with a theoretical 5–10% range (Harrison, 2000; Tréguer et al., 1995). This is still much higher than the 0.02–1.1% suggested by a study from Baker et al. (2006) on the dissolution of Saharan dust particles. In addition the large dissemination of dust particles over the world ocean (mainly Atlantic) is more likely to have little impact on the marine silica cycle compared to the distribution of riverine inputs along the world coastline.

Riverine input of silicic acid occurs at the same time as the other limiting nutrients supporting a vigorous primary production (Figs. 2 and 3), except on the Pacific side of South-East Asia which is limited by iron. The conditions are then favourable to a local use of the available silicic acid that explains the relative low export of the silica from these marginal seas. Consequently, a large part of the opal is buried on the continental margins (Tréguer et al., 1995). The situation is different for the Arctic region that receives a large flux of DSi in relation to the shallowness of the basin and its volume (Dürr et al., 2009) and where sea ice does not allow plankton growth (Fig. 3). This combined factors lead to higher concentrations of DSi in the Arctic basin.

The maps of the surface DSi (Fig. 2) and opal export production (Fig. 5) point out the strong spatial heterogeneity of the riverine silica contribution to the oceanic biogeochemical cycle of silica. This is not surprising given the enormous heterogeneity in the spatial distribution of riverine silica inputs (Dürr et al., 2009).

Riverine inputs of silica do have a stronger effect on the ocean distribution of silica as they often occur in areas that encounter no major input from upwelling (Amazon, South-Eastern Asia, Arctic rivers as shown on Fig. 2). The silica delivery in these areas is dominated by riverine flux. Remobilisation of opal shelf sediments would not compensate for a large decrease of the riverine silica input. It is also interesting to note the general climate impact on the regionalization of total input of silica to the euphotic



layer. Both riverine and upwelling supply depend on climate. The precipitation on the continents drives the weathering of rocks and the transport of silica to the ocean while winds drive the upwelling processes along the shore. Any changes in the atmospheric circulation could thus spatially redistribute the riverine silica inputs to the sea surface of the ocean.

The effect on the surface silica concentration depends on the location of the river mouth. The effect of the silica inputs from the Amazon appears to be small when compared to the Siberian rivers. The Siberian COSCATs combined contribute to raise the surface silica concentration by  $15 \mu\text{mol l}^{-1}$  with an annual input of 0.26 Tmol of Si. Despite the 1.1 Tmol Si per year released by the Amazon River and Orinoco River, the surface silica concentration just rises by  $6\text{--}8 \mu\text{mol l}^{-1}$ . First, one must take into consideration the size of the oceanic regional domain. Accordingly, the Arctic Ocean is the region of the global ocean that encounters the highest silica input in relation to its size. Second, the depth of the oceanic regional domain determines the efficiency of the removal of silicic acid by the silica pump described by Dugdale et al. (1995). The Si export to the deep ocean has been shown to be more efficient than for N and P (Bidle and Azam, 1999), recycling of opal remains slower than for N and P. The narrowness of the continental shelf determines the efficiency of the opal export. The shallowness of the continental shelf shortens the sinking time of opal, most of which reaches the sediments before being redissolved. The slow remineralisation of opal sediments then promotes its storage on continental shelf for a long period (Ragueneau et al., 2002). If the opal export takes place further out in the open ocean, the longer sinking time promotes the dissolution of a larger fraction of the exported biogenic silica, the redissolved silica will sooner or later be re-exported to the euphotic layer (by advection or diffusion). This process is illustrated by the case of the Amazon contribution, whose large scale plume is correctly captured by the model if compared to the study of Nikiema (2007). As shown in Figs. 2 and 5, the north-westward Amazon plume input is so powerful that it exports its load up to a few hundreds of kilometres from the coast, supporting opal production far outside the continental shelf. The silica taken up by diatoms to build

**BGD**

7, 4919–4951, 2010

## Contribution of riverine nutrients to the silicon biogeochemistry

C. Y. Bernard et al.

Title Page

Abstract

Introduction

Conclusions

References

Tables

Figures

⏪

⏩

◀

▶

Back

Close

Full Screen / Esc

Printer-friendly Version

Interactive Discussion



up their siliceous shells is directly exported to the deep ocean after diatoms die. In the case of the Arctic Ocean, the sea ice prevents plankton growth and silica uptake, which causes an accumulation.

Riverine silica input shows high sensitivity to land use and human activity in general (Conley et al., 1993; Humborg et al., 2000). River damming and artificial reservoirs trap part of the riverine silica and as DSi ultimately originates from natural weathering of rocks (Meybeck, 1998), measurements have shown a decrease of the riverine DSi during the last decades (Humborg et al., 2000; Justic et al., 1995b). In parallel, human activity had the opposite effect on N and P: agriculture, industry or urban sewage increased N and P emissions. The combined result is a general decrease of the riverine Si:N and Si:P ratio (Justic et al., 1995a,b). In addition, the increased input of N and P stimulates the primary production fuelling the silica pump. Sediment beneath the Mississippi River plume showed an increased accumulation of biogenic silica over the past two decades (Rabalais et al., 1996), despite a decrease of the Mississippi supply in silica. It is therefore interesting to note that South-Eastern Asia, which receives one of the most significant inputs of riverine silica, is the region of the world that encounters the strongest population growth, urbanization and development. It is therefore probable to expect a large change in the land-ocean nutrient flux potentially resulting in shifts in the plankton populations.

The complex pattern of iron during its transfer to the ocean does not allow a direct flux from the rivers (Wells and Mayer, 1991; Poulton and Raiswell, 2002). Iron aggregates and settles in the estuary when freshwater and sea waters mixes (Poulton and Raiswell, 2002). A large part remains trapped in the estuary. The input of iron is assumed to be mainly supported by dust deposition and remineralisation in the sediment pore waters of the coastal sediments before advection to the surface (Johnson et al., 1999). Riverine iron input is not considered in this study, as it is assumed that on the continental margins iron originates from the remineralisation taking place in the sediments. It is also well established that the active recycling of iron on the continental margins prevents iron limitation on the continental margins except in coastal upwelling

**Contribution of riverine nutrients to the silicon biogeochemistry**

C. Y. Bernard et al.

Title Page

Abstract

Introduction

Conclusions

References

Tables

Figures



Back

Close

Full Screen / Esc

Printer-friendly Version

Interactive Discussion



## Contribution of riverine nutrients to the silicon biogeochemistry

C. Y. Bernard et al.

Title Page

Abstract

Introduction

Conclusions

References

Tables

Figures



Back

Close

Full Screen / Esc

Printer-friendly Version

Interactive Discussion



regimes (Hutchins and Bruland, 1998). The dissolved iron availability interacts with the utilisation of riverine silica through its potential control of photosynthesis. Currently, the model generates an iron limitation in the coastal zone due to the high use and export of the original iron caused by the high supply of nutrients. The model fails to reproduce the iron recycling from the shelf sediments. The primary source of iron in the continental shelf seas is resuspension of particles and redissolution of deposited iron in the benthic boundary layer, followed by upwelling of this iron-rich water, rather than direct riverine input (Johnson et al., 1999). The generated artificial iron limitation masks part of the potential of the continental margins primary production potential. It probably artificially decreases the opal production of the marginal seas.

To use riverine iron concentration from the literature would rather generate an iron fertilization experiment than give a better picture of the marginal seas productivity. A realistic approach would consist in getting a better simulation of the iron return from the coastal sediments to the surface on continental margins as suggested by Wells and Trick (2004) by extending redissolution to iron in the sediments and by enhancing resuspension by increasing the vertical mixing coefficient in the coastal cells as described in Giraud et al. (2008). This might be the reason why the model fails to reproduce the high production belt along the continents even when riverine nutrient input is taken into account.

To better simulate the land-ocean interface it is necessary to enhance the implementation of coastal processes, taking into consideration regional patterns of the estuarine and near-shore retention of riverine nutrients. The idea is to overcome the coarse resolution of the BGCM by using a box model that will prescribe the riverine flux for each coastal segment of the COSCATs database, with a specific parameterisation for each segment. The next step would also include the riverine  $\text{bSiO}_2$  inputs. Conley et al. (1997, 2002) and Laruelle et al. (2009) suggest that the terrestrial opal production transferred to the ocean via the river systems releases a significant input of  $\text{bSiO}_2$ . The  $\text{bSiO}_2$  encounters massive dissolution under the pH and salinity shift in estuaries (Loucaides et al., 2008; Roubex et al., 2008). This input ( $1.05 \pm 0.2 \text{ Tmol Si y}^{-1}$ , Conley,

1997) is believed to be of the same order of magnitude as the estuarine dissolved silica retention (roughly 20%, Laruelle et al., 2009).

The coupling of the model to the database of riverine nutrients achieved here will allow running scenarios with changes in the nutrient river fluxes, once they become available. Global-NEWS models are currently under development, using the Millennium Ecosystem Assessment Scenarios (Carpenter et al., 2005). Ongoing projects of damming major rivers such as the Three-Gorges Dam have already shown changing nutrient concentrations and ratios in the coastal zone and the East China Sea (filling phase started in June 2003). Investigations carried out by Gong et al. (2006) have shown that the Si:N ratio in the river-affected region changed from 1.5 in 1998 to 0.4 in 2004. All over the world, all nutrients are expected to be impacted, and models expect that between 1990 and 2050 dissolved inorganic nitrogen (DIN) export by rivers more than doubles to 47.2 Tg N in 2050 (Kroeze and Seitzinger, 1998). Unanimously, observations show a general decrease of the Si:N and Si:P ratio. The decreasing riverine DSi concentration is probably due to the enhanced reservoir retention effect (Humborg et al., 2000; McGinnis et al., 2006). In addition, Rabalais (1996) suggested that a larger amount of silica would be buried in the continental shelf due to an increased coastal primary production supported by the increased riverine N and P input.

The recent development of the river biogeochemical states is different depending on the regional level of economical development. In a few developed countries, reduction of eutrophication (wastewater treatment, denitrified and diphosphorilated) and sustainable land use changes may stabilise the riverine load of N and P. In some rare cases the load of N and P tends to decrease. For example, in Poland, economical changes in the early 1990s, led to a drastic decrease in fertilizer consumption (Eriksson et al., 2007). Water quality management policies and rehabilitation of aquatic habitats forced to a limitation of the release of nutrients in the rivers to limit eutrophication impacts on the environment. Nevertheless, this local improvement might still be small compared to the global increase of nutrient river loads in the rest of the world and its resulting decrease of the Si:N and Si:P ratios.

---

## **Contribution of riverine nutrients to the silicon biogeochemistry**

C. Y. Bernard et al.

---

Title Page

Abstract

Introduction

Conclusions

References

Tables

Figures



Back

Close

Full Screen / Esc

Printer-friendly Version

Interactive Discussion



## 5 Conclusions

Regionalisation of silica inputs highlights the heterogeneity of land water contributions to the marine cycle of silicon. The fate of the riverine silica input is largely dependant on the input location and local level of productivity. Hot spots of riverine DSi inputs are mainly located in areas where there is little support of the marine ecosystem through upwelling. It makes these areas dependant on the riverine fluxes and sensitive to the human activity that affects the riverine transport of nutrients. The uniform distribution of riverine silica at the surface of the ocean commonly used in global models to balance opal burial in the sediments can no longer be used if one plans to properly describe the biogeochemical cycle of silica, especially for models taking into consideration the competition between calcifiers and diatoms. Here we take the first steps to a full integration of nutrient cycling, including the continental shelf seas and land/ocean coupling, in an Earth system modelling context.

*Acknowledgements.* The work on this project was made possible by financial support from the Bjerknes Centre for Climate Research – University of Bergen, the EU (Si-WEBS, contract number HPRN-CT-2002-000218) and Utrecht University (High Potential project G-NUX). Sybil Seitzinger and Emilio Mayorga (Institute of Marine & Coastal Sciences, Rutgers University, USA) are acknowledged for the communication of the merged Global-NEWS data sets. Discussions and suggestions from K. Assmann were greatly appreciated. Computations were carried out under project nn2980k at the Norwegian Metacenter for Computational Science NOTUR. This is a publication from the Bjerknes Centre for Climate Research.

**BGD**

7, 4919–4951, 2010

### Contribution of riverine nutrients to the silicon biogeochemistry

C. Y. Bernard et al.

Title Page

Abstract

Introduction

Conclusions

References

Tables

Figures

⏪

⏩

◀

▶

Back

Close

Full Screen / Esc

Printer-friendly Version

Interactive Discussion



## References

- Amiotte-Suchet, P. A., Probst, J. L., and Ludwig, W.: Worldwide distribution of continental rock lithology: implications for the atmospheric/soil CO<sub>2</sub> uptake by continental weathering and alkalinity river transport to the oceans, *Global Biogeochem. Cy.*, 17, 1038–1051, 2003.
- 5 Aumont, O., Maier-Reimer, E., Blain, S., and Monfray, P.: An ecosystem model of the global ocean including Fe, Si, P colimitations, *Global Biogeochem. Cy.*, 17, 23 pp., 2003.
- Baker, A. R., French, M., and Linge, K. L.: Trends in aerosol nutrient solubility along a west-east transect of the Saharan dust plume, *Geophys. Res. Lett.*, 33, L07805, doi:10.1029/2005gl024764, 2006.
- 10 Behrenfeld, M. J., Bale, A. J., Kolber, Z. S., Aiken, J., and Falkowski, P. G.: Confirmation of iron limitation of phytoplankton photosynthesis in the Equatorial Pacific Ocean, *Nature*, 383, 508–511, 1996.
- Beusen, A. H. W., Dekkers, A. L. M., Bouwman, A. F., Ludwig, W., and Harrison, J.: Estimation of global river transport of sediments and associated particulate C, N, and P, *Global Biogeochem. Cy.*, 19, 17 pp., 2005.
- 15 Bidle, K. D. and Azam, F.: Accelerated dissolution of diatom silica by marine bacterial assemblages, *Nature*, 397, 508–512, 1999.
- Carpenter, S. R., Pingali, P. L., Bennett, E. M., and Zurek, M. B.: *Ecosystems and Human Well-Being: Scenarios*, Island Press, Washington, DC, USA, Millennium Ecosystem Assessment (MA), 2005.
- 20 Conley, D. J., Schelske, C. L., and Stoermer, E. F.: Modification of the biogeochemical cycle of silica with eutrophication, *Mar. Ecol.-Prog. Ser.*, 101, 179–192, 1993.
- Conley, D. J.: Riverine contribution of biogenic silica to the oceanic silica budget, *Limnol. Oceanogr.*, 42, 774–777, 1997.
- 25 Conley, D. J.: Terrestrial ecosystems and the global biogeochemical silica cycle, *Global Biogeochem. Cy.*, 16(8), 1121, doi:10.1029/2002gb001894, 2002.
- Da Cunha, L. C., Buitenhuis, E. T., Le Quere, C., Giraud, X., and Ludwig, W.: Potential impact of changes in river nutrient supply on global ocean biogeochemistry, *Global Biogeochem. Cy.*, 21, 15 pp., 2007.
- 30 Dugdale, R. C., Wilkerson, F. P., and Minas, H. J.: The role of a silicate pump in driving new production, *Deep-Sea Res. Pt. I*, 42, 697–719, 1995.

---

### Contribution of riverine nutrients to the silicon biogeochemistry

C. Y. Bernard et al.

---

Title Page

Abstract

Introduction

Conclusions

References

Tables

Figures



Back

Close

Full Screen / Esc

Printer-friendly Version

Interactive Discussion



## Contribution of riverine nutrients to the silicon biogeochemistry

C. Y. Bernard et al.

[Title Page](#)

[Abstract](#)

[Introduction](#)

[Conclusions](#)

[References](#)

[Tables](#)

[Figures](#)

[⏪](#)

[⏩](#)

[◀](#)

[▶](#)

[Back](#)

[Close](#)

[Full Screen / Esc](#)

[Printer-friendly Version](#)

[Interactive Discussion](#)



- Dumont, E., Harrison, J. A., Kroeze, C., Bakker, E. J., and Seitzinger, S. P.: Global distribution and sources of dissolved inorganic nitrogen export to the coastal zone: results from a spatially explicit, global model, *Global Biogeochem. Cy.*, 19, 13 pp., 2005.
- Dürr, H. H., Meybeck, M., Hartmann, J., Laruelle, G. G., and Roubeix, V.: Global spatial distribution of natural riverine silica inputs to the coastal zone, *Biogeosciences Discuss.*, 6, 1345–1401, doi:10.5194/bgd-6-1345-2009, 2009.
- 5 Egge, J. K. and Aksnes, D. L.: Silicate as regulating nutrient in phytoplankton competition, *Mar. Ecol.-Prog. Ser.*, 83, 281–289, 1992.
- Eriksson, H., Pastuszak, M., Lofgren, S., Morth, C. M., and Humborg, C.: Nitrogen budgets of the Polish agriculture 1960–2000: implications for riverine nitrogen loads to the Baltic Sea from transitional countries, *Biogeochemistry*, 85, 153–168, 2007.
- 10 Giraud, X., Le Quere, C., and da Cunha, L. C.: Importance of coastal nutrient supply for global ocean biogeochemistry, *Global Biogeochem. Cy.*, 22, Gb2025, doi:10.1029/2006gb002717, 2008.
- 15 Gong, G. C., Chang, J., Chiang, K. P., Hsiung, T. M., Hung, C. C., Duan, S. W., and Codispoti, L. A.: Reduction of primary production and changing of nutrient ratio in the East China Sea: Effect of the Three Gorges Dam?, *Geophys. Res. Lett.*, 33, 4 pp., 2006.
- Graham, W. M.: Numerical increases and distributional shifts of *Chrysaora quinquecirrha* (Desor) and *Aurelia aurita* (Linne) (Cnidaria:Scyphozoa) in the Northern Gulf of Mexico, *Hydrobiologia*, 451, 97–111, 2001.
- 20 Harrison, J. A., Caraco, N., and Seitzinger, S. P.: Global patterns and sources of dissolved organic matter export to the coastal zone: results from a spatially explicit, global model, *Global Biogeochem. Cy.*, 19, 16 pp., 2005a.
- Harrison, J. A., Seitzinger, S. P., Bouwman, A. F., Caraco, N. F., Beusen, A. H. W., and Vorosmarty, C. J.: Dissolved inorganic phosphorus export to the coastal zone: results from a spatially explicit, global model, *Global Biogeochem. Cy.*, 19, 15 pp., 2005b.
- 25 Harrison, K. G.: Role of increased marine silica input on paleo- $p\text{CO}_2$  levels, *Paleoceanography*, 15, 292–298, 2000.
- Heinze, C., Maier-Reimer, E., Winguth, A. M. E., and Archer, D.: A global oceanic sediment model for long-term climate studies, *Global Biogeochem. Cy.*, 13, 221–250, 1999.
- 30 Humborg, C., Conley, D. J., Rahm, L., Wulff, F., Cociasu, A., and Ittekkot, V.: Silicon retention in river basins: far-reaching effects on biogeochemistry and aquatic food webs in coastal marine environments, *Ambio*, 29, 45–50, 2000.

## Contribution of riverine nutrients to the silicon biogeochemistry

C. Y. Bernard et al.

Title Page

Abstract

Introduction

Conclusions

References

Tables

Figures

⏪

⏩

◀

▶

Back

Close

Full Screen / Esc

Printer-friendly Version

Interactive Discussion



- Hutchins, D. A. and Bruland, K. W.: Iron-limited diatom growth and Si:N uptake ratios in a coastal upwelling regime, *Nature*, 393, 561–564, 1998.
- Johnson, H. P., Hautala, S. L., Bjorklund, T. A., and Zarnetske, M. R.: Quantifying the North Pacific silica plume, *Geochem. Geophys. Geosy.*, 7, 14 pp., 2006.
- 5 Johnson, K. S., Chavez, F. P., and Friederich, G. E.: Continental-shelf sediment as a primary source of iron for coastal phytoplankton, *Nature*, 398, 697–700, 1999.
- Justic, D., Rabalais, N. N., and Turner, R. E.: Stoichiometric nutrient balance and origin of coastal eutrophication, *Mar. Pollut. Bull.*, 30, 41–46, 1995a.
- Justic, D., Rabalais, N. N., Turner, R. E., and Dortch, Q.: Changes in nutrient structure of river-dominated coastal waters: stoichiometric nutrient balance and its consequences, *Estuar. Coast. Shelf S.*, 40, 339–356, 1995b.
- 10 Kroeze, C. and Seitzinger, S. P.: Nitrogen inputs to rivers, estuaries and continental shelves and related nitrous oxide emissions in 1990 and 2050: a global model, *Nutr. Cycl. Agroecosys.*, 52, 195–212, 1998.
- 15 Laruelle, G. G., Roubeix, V., Sferratore, A., Brodherr, B., Ciuffa, D., Conley, D. J., Dürr, H. H., Garnier, J., Lancelot, C., Le Thi Phuong, Q., Meunier, J.-D., Meybeck, M., Michalopoulos, P., Moriceau, B., Ni Longphuir, S., Loucaides, S., Papush, L., Presti, M., Ragueneau, O., Regnier, P. A. G., Saccone, L., Slomp, C. P., Spiteri, C., and Van Cappellen, P.: Anthropogenic perturbations of the silicon cycle at the global scale: the 1 key role of the land-ocean transition, *Global Biogeochem. Cy.*, 23, 17 pp., 2009.
- 20 Longhurst, A., Sathyendranath, S., Platt, T., and Caverhill, C.: An estimate of global primary production in the ocean from satellite radiometer data, *J. Plankton Res.*, 17, 1245–1271, 1995.
- Loucaides, S., van Cappellen, P., and Behrends, T.: Dissolution of biogenic silica from land to ocean: role of salinity and pH, *Limnol. Oceanogr.*, 53, 1614–1621, 2008.
- 25 Mahowald, N. M., Muhs, D. R., Levis, S., Rasch, P. J., Yoshioka, M., Zender, C. S., and Luo, C.: Change in atmospheric mineral aerosols in response to climate: last glacial period, preindustrial, modern, and doubled carbon dioxide climates, *J. Geophys. Res.-Atmos.*, 111, 22 pp., 2006.
- 30 Maier-Reimer, E.: Geochemical cycles in an ocean general circulation model. Preindustrial tracer distributions, *Global Biogeochem. Cy.*, 7, 645–677, 1993.
- Maier-Reimer, E., Kriest, I., Segschneider, J., and Wetzel, P.: Technical description of the HAMburg Ocean Carbon Cycle model, version 5.1 (HAMOCC5.1), and of its interface to



---

## Contribution of riverine nutrients to the silicon biogeochemistry

C. Y. Bernard et al.

---

Title Page

Abstract

Introduction

Conclusions

References

Tables

Figures

◀

▶

◀

▶

Back

Close

Full Screen / Esc

Printer-friendly Version

Interactive Discussion



MPI-OM, available at: <http://web.archive.org/web/20080226203941/http://www.mpimet.mpg.de/wissenschaft/modelle/mpiom/mpiom-description.html>, last access: June 2010, 2005.

Marsland, S. J., Haak, H., Jungclaus, J. H., Latif, M., and Roske, F.: The Max-Planck-Institute global ocean/sea ice model with orthogonal curvilinear coordinates, *Ocean Model.*, 5, 91–127, 2003.

McGinnis, D. F., Bocaniov, S., Teodoru, C., Friedl, G., Lorke, A., and Wuest, A.: Silica retention in the iron gate I reservoir on the Danube River: the role of side bays as nutrient, *River Res. Appl.*, 22, 441–456, 2006.

Meybeck, M., Dürr, H. H., and Vörösmarty, C. J.: Global coastal segmentation and its river catchment contributors: a new look at land-ocean linkage, *Global Biogeochem. Cy.*, 20, 15 pp., 2006.

Moore, J. K., Doney, S. C., Kleypas, J. A., Glover, D. M., and Fung, I. Y.: An intermediate complexity marine ecosystem model for the global domain, *Deep-Sea Res. Pt. II*, 49, 403–462, doi:10.1016/s0967-0645(01)00108-4, 2001.

Moore, J. K., Doney, S. C., Glover, D. M., and Fung, I. Y.: Iron cycling and nutrient-limitation patterns in surface waters of the World Ocean, *Deep-Sea Res. Pt. II*, 49, 463–507, 2002.

Nikiema, O., Devenon, J. L., and Baklouti, M.: Numerical modeling of the Amazon River plume, *Cont. Shelf Res.*, 27, 873–899, 2007.

Poulton, S. W. and Raiswell, R.: The low-temperature geochemical cycle of iron: from continental fluxes to marine sediment deposition, *Am. J. Sci.*, 302, 774–805, 2002.

Purcell, J. E., Malej, A., and Benovic, A.: Potential links of jellyfish to eutrophication and fisheries, in: *Ecosystems at the Land-Sea Margin: Drainage Basin to Coastal Sea*, edited by: Malone, T. C., Malej, A., Harding Jr., L. W., Smodlaka, N., and Turner, R. E., *Coast. Estuar. Stud.*, 55, 241–263, 1999.

Rabalais, N. N., Wiseman, W. J., Turner, R. E., SenGupta, B. K., and Dortch, Q.: Nutrient changes in the Mississippi River and system responses on the adjacent continental shelf, *Estuaries*, 19, 386–407, 1996.

Rabouille, C., Mackenzie, F. T., and Ver, L. M.: Influence of the human perturbation on carbon, nitrogen, and oxygen biogeochemical cycles in the global coastal ocean, *Geochim. Cosmochim. Ac.*, 65, 3615–3641, 2001.

Ragueneau, O., Chauvaud, L., Leynaert, A., Thouzeau, G., Paulet, Y. M., Bonnet, S., Lorrain, A., Grall, J., and Corvaisier, R.: Direct evidence of a biologically active coastal silicate pump: ecological implications, *Limnol. Oceanogr.*, 47, 1849–1854, 2002.



## Contribution of riverine nutrients to the silicon biogeochemistry

C. Y. Bernard et al.

Title Page

Abstract

Introduction

Conclusions

References

Tables

Figures

⏪

⏩

◀

▶

Back

Close

Full Screen / Esc

Printer-friendly Version

Interactive Discussion

Roubeix, V., Becquevort, S., and Lancelot, C.: Influence of bacteria and salinity on diatom biogenic silica dissolution in estuarine systems, *Biogeochemistry*, 88, 47–62, doi:10.1007/s10533-008-9193-8, 2008.

Seitzinger, S. P., Harrison, J. A., Dumont, E., Beusen, A. H. W., and Bouwman, A. F.: Sources and delivery of carbon, nitrogen, and phosphorus to the coastal zone: an overview of Global Nutrient Export from Watersheds (NEWS) models and their application, *Global Biogeochem. Cy.*, 19, GB4S01, doi:10.1029/2005GB002606, 2005.

Six, K. D. and Maier-Reimer, E.: Effects of plankton dynamics on seasonal carbon fluxes in an ocean general circulation model, *Global Biogeochem. Cy.*, 10, 559–583, 1996.

Tréguer, P., Nelson, D. M., Vanbennekorn, A. J., Demaster, D. J., Leynaert, A., and Queguiner, B.: The silica balance in the world ocean: a reestimate, *Science*, 268, 375–379, 1995.

Ver, L. M. B., Mackenzie, F. T., and Lerman, A.: Carbon cycle in the coastal zone: effects of global perturbations and change in the past three centuries, *Chem. Geol.*, 159, 283–304, 1999.

Vörösmarty, C. J., Fekete, B. M., Meybeck, M., and Lammers, R. B.: Global system of rivers: its role in organizing continental land mass and defining land-to-ocean linkages, *Global Biogeochem. Cy.*, 14, 599–621, 2000a.

Vörösmarty, C. J., Fekete, B. M., Meybeck, M., and Lammers, R. B.: Geomorphometric attributes of the global system of rivers at 30-min spatial resolution, *J. Hydrol.*, 237, 17–39, 2000b.

Wells, M. L. and Mayer, L. M.: Variations in the chemical lability of iron in estuarine, coastal and shelf waters and its implications for phytoplankton, *Mar. Chem.*, 32, 195–210, 1991.

Wells, M. L. and Trick, C. G.: Controlling iron availability to phytoplankton in iron-replete coastal waters, *Mar. Chem.*, 86, 1–13, doi:10.1016/j.marchem.2003.10.003, 2004.

Wetzel, P.: Interannual and Decadal Variability in the Air-Sea Exchange of CO<sub>2</sub> – a Model Study, Ph.D. thesis, 127 pp., 2004.

Wetzel, P., Winguth, A., and Maier-Reimer, E.: Sea-to-air CO<sub>2</sub> flux from 1948 to 2003: a model study, *Global Biogeochem. Cy.*, 19, Gb2005, doi:10.1029/2004GB002339, 2005.

Yool, A. and Fasham, M. J. R.: An examination of the “continental shelf pump” in an open ocean general circulation model, *Global Biogeochem. Cy.*, 15, 831–844, 2001.

## Contribution of riverine nutrients to the silicon biogeochemistry

C. Y. Bernard et al.

Title Page

Abstract

Introduction

Conclusions

References

Tables

Figures

⏪

⏩

◀

▶

Back

Close

Full Screen / Esc

Printer-friendly Version

Interactive Discussion

**Table 1.** Data sources for nutrient forms used here as riverine inputs.

Nutrient form	Acronym	Method	Data format used	Reference
Dissolved silica	DSi	Extrapolation from river catchments to COSCATs using characteristics like lithology, climate, lake occurrence	Data directly available at the COSCAT resolution	(Dürr et al., 2009)
Dissolved inorganic nitrogen	DIN	Spatially explicit regression models linking basin	Data originally developed for the STN-30 v.6 river	(Dumont et al., 2005)
Dissolved inorganic phosphorus	DIP	characteristics at 0.5 degree resolution plus human influence to	basins, merged data set used here and aggregated to the	(Harrison et al., 2005b)
Dissolved organic nutrient forms	DON, DOP, DOC	nutrient export	COSCAT resolution of ~140 mega river-ensemble catchments	(Harrison et al., 2005a)
Dissolved inorganic carbon	DIC	Data originally calculated at 1 degree resolution, regression model using methodology derived from monolithologic watersheds	Fluxes are used as aggregated at the COSCAT resolution	(Amiotte-Suchet et al., 2003)
Particulate nutrient forms	PP, PN, PC	Spatially explicit regression model for suspended sediments (same model strategy as for DIN, DIP and organic matter), the nutrient partitioning is derived from known relationships resulting in fractions of suspended matter flux	Data originally developed for the STN-30 v.5 river basins, merged data set used here (adapted for STN-30 v.6) and aggregated to the COSCAT resolution of ~140 mega river-ensemble catchments	(Beusen et al., 2005)



**BGD**

7, 4919–4951, 2010

**Contribution of riverine nutrients to the silicon biogeochemistry**

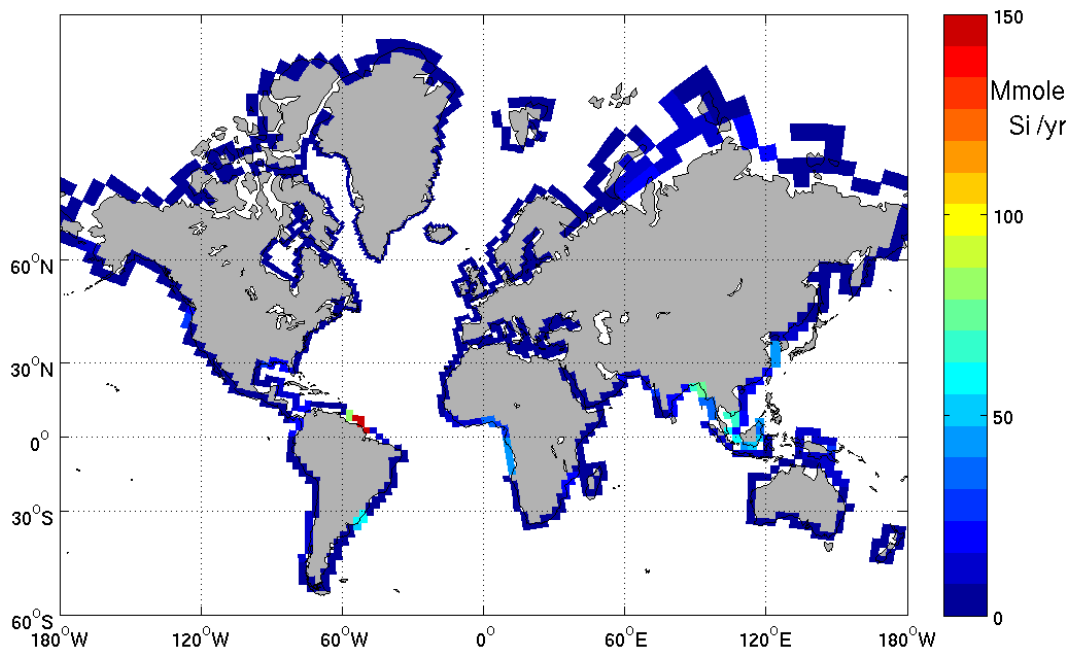
C. Y. Bernard et al.

[Title Page](#)[Abstract](#)[Introduction](#)[Conclusions](#)[References](#)[Tables](#)[Figures](#)[◀](#)[▶](#)[◀](#)[▶](#)[Back](#)[Close](#)[Full Screen / Esc](#)[Printer-friendly Version](#)[Interactive Discussion](#)**Table 3.** Model runs and opal production budgeting ( $\text{Tmol Si yr}^{-1}$ ).

	Opal export production		Opal sediment deposition	
	Global ocean	Shelf	Global ocean	Shelf
Run ref, no rivers “Run NoRiv”	76.24	6.68	32.56	5.11
Run N, P, C “Run NPC”	76.79	7.07	32.80	5.45
Run N, P, C and Si “Run NPCSi”	81.54	8.38	34.51	6.55

**Contribution of  
riverine nutrients to  
the silicon  
biogeochemistry**

C. Y. Bernard et al.

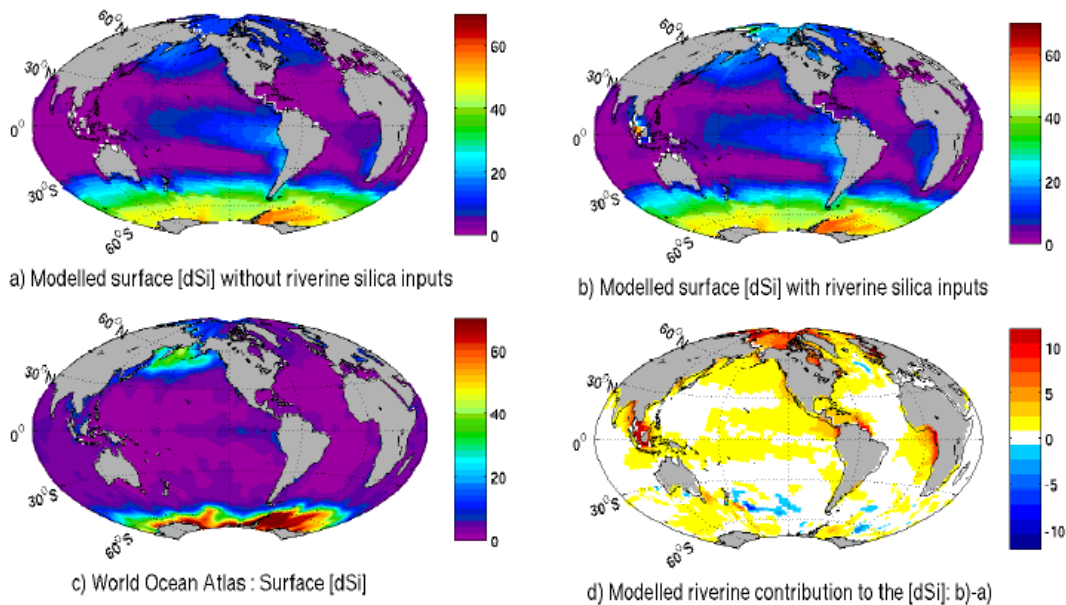


**Fig. 1.** Integrated annual flux of silica as added in the model grid, according to the 129 coastal segments from the COSCAT approach. Riverine silica inputs are given in megamoles Si per year.

[Title Page](#)[Abstract](#)[Introduction](#)[Conclusions](#)[References](#)[Tables](#)[Figures](#)[⏪](#)[⏩](#)[◀](#)[▶](#)[Back](#)[Close](#)[Full Screen / Esc](#)[Printer-friendly Version](#)[Interactive Discussion](#)

## Contribution of riverine nutrients to the silicon biogeochemistry

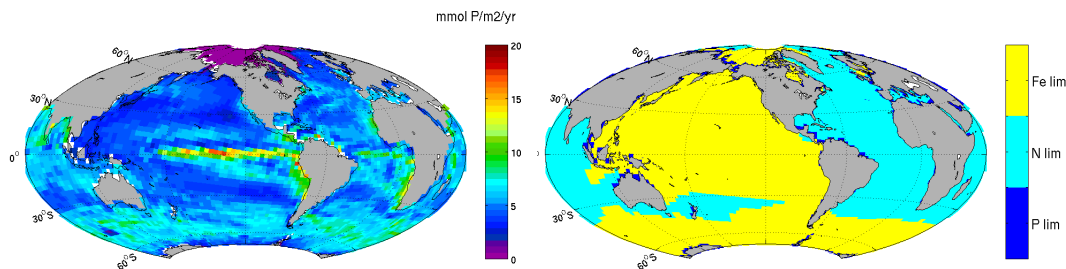
C. Y. Bernard et al.



**Fig. 2.** River contribution to the surface silicic acid concentration. Sea surface concentration given in  $\mu\text{mol l}^{-1}$ : **(a)** modelled DSi without riverine silica inputs **(b)** modelled DSi with riverine silica inputs **(c)** surface DSi concentration from the World Ocean Atlas **(d)** the computed difference with/without riverine silica inputs (b–a).

**Contribution of  
riverine nutrients to  
the silicon  
biogeochemistry**

C. Y. Bernard et al.



**Fig. 3.** Left, annually integrated photosynthesis in the euphotic ocean layer, the photosynthesis is expressed in  $\text{mmol P m}^{-2} \text{yr}^{-1}$ . Right, limiting nutrient driving the photosynthesis in the surface layer.

Title Page

Abstract

Introduction

Conclusions

References

Tables

Figures

◀

▶

◀

▶

Back

Close

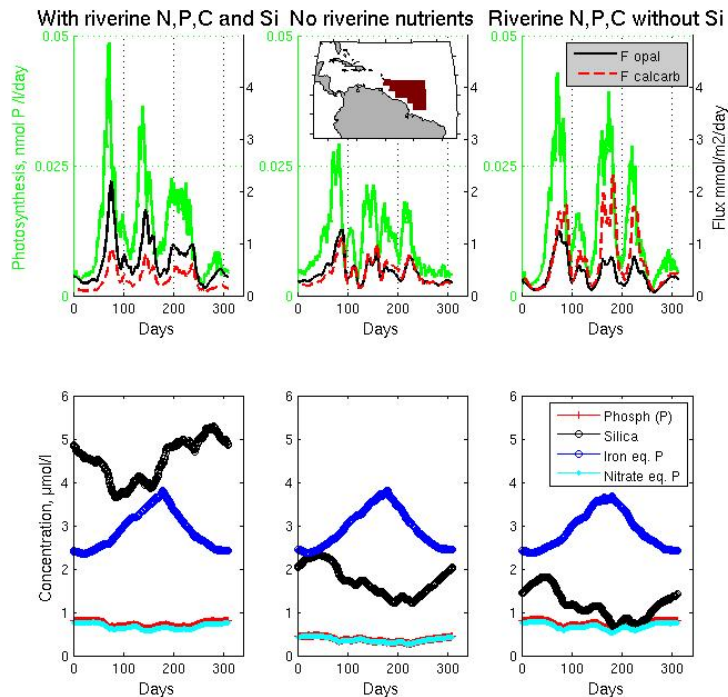
Full Screen / Esc

Printer-friendly Version

Interactive Discussion

## Contribution of riverine nutrients to the silicon biogeochemistry

C. Y. Bernard et al.

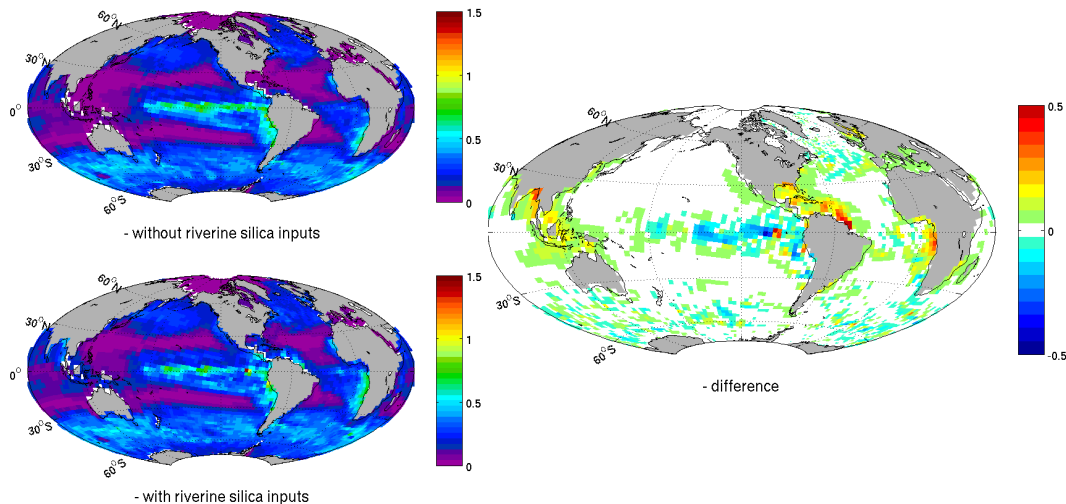


**Fig. 4.** The seasonal cycle of nutrient limitation (element equivalent phosphorous) in the Amazon plume region ( $1.74 \times 10^6 \text{ km}^2$ , corresponding to 23 grid cells ( $275 \times 275 \text{ km}$ ), located between longitude  $64^\circ$  and  $48^\circ$  west, latitude  $14.5^\circ$  north and the coastline). Opal and calcium carbonate export ( $F_{\text{opal}}$  and  $F_{\text{calcarb}}$ ) at 10 m depth in response to photosynthesis (upper panels) with all riverine nutrients (left) and without any riverine nutrients (middle) or with riverine nutrients without DSi (right). Nutrient limitation (lower panels) is expressed as the concentration adjusted to the necessary stoichiometric concentration of nitrogen and iron relative to phosphate. The limitation of photosynthesis is driven by the lowest concentration equivalent phosphate (iron, nitrate or phosphate). Opal and calcium carbonate competition is driven by the silica concentration.



## Contribution of riverine nutrients to the silicon biogeochemistry

C. Y. Bernard et al.



**Fig. 5.** Rivers contribution to the Opal export production in  $\text{mol Si m}^{-2} \text{yr}^{-1}$  – without silica riverine inputs (top-left) – with silica riverine inputs (bottom-left) and the computed difference with/without riverine silica inputs (right).

[Title Page](#)[Abstract](#)[Introduction](#)[Conclusions](#)[References](#)[Tables](#)[Figures](#)[⏪](#)[⏩](#)[◀](#)[▶](#)[Back](#)[Close](#)[Full Screen / Esc](#)[Printer-friendly Version](#)[Interactive Discussion](#)