

This discussion paper is/has been under review for the journal Biogeosciences (BG).
Please refer to the corresponding final paper in BG if available.

A seasonal study of dissolved cobalt in the Ross Sea, Antarctica: micronutrient behavior, absence of scavenging, and relationships with Zn, Cd, and P

M. A. Saito¹, T. J. Goepfert¹, A. E. Noble¹, E. M. Bertrand¹, P. N. Sedwick², and G. R. DiTullio³

¹Marine Chemistry and Geochemistry Department, Woods Hole Oceanographic Institution, Woods Hole, MA 02543, USA

²Old Dominion University, Department of Ocean, Earth and Atmospheric Sciences, Norfolk, VA 23529, USA

³College of Charleston, Hollings Marine Laboratory, 331 Fort Johnson, Charleston, SC 29412, USA

Received: 30 July 2010 – Accepted: 6 August 2010 – Published: 25 August 2010

Correspondence to: M. A. Saito (msaito@whoi.edu)

Published by Copernicus Publications on behalf of the European Geosciences Union.

BGD

7, 6387–6439, 2010

Cobalt in the Ross Sea

M. A. Saito et al.

Title Page

Abstract

Introduction

Conclusions

References

Tables

Figures

◀

▶

◀

▶

Back

Close

Full Screen / Esc

Printer-friendly Version

Interactive Discussion



Abstract

We report the distribution of cobalt (Co) in the Ross Sea polynya during austral summer 2005–2006 and the following austral spring 2006. The vertical distribution of total dissolved Co (dCo) was similar to soluble reactive phosphate (PO_4^{3-}), with dCo and PO_4^{3-} showing a significant correlation throughout the water column ($r^2=0.87$). A strong seasonal signal for dCo was observed, with most spring samples having concentrations ranging from ~45–85 pM, whereas summer dCo values were depleted below these levels by biological activity. Surface transect data from the summer cruise revealed concentrations at the low range of this seasonal variability (~30 pM dCo), with concentrations as low as 20 pM observed in some regions where PO_4^{3-} was depleted to ~0.1 μM . Both complexed Co, defined as the fraction of dCo bound by strong organic ligands, and labile Co, defined as the fraction of dCo not bound by these ligands, were typically observed in significant concentrations throughout the water column. This contrasts the depletion of labile Co observed in the euphotic zone of other ocean regions, suggesting a much higher bioavailability for Co in the Ross Sea. An ecological stoichiometry of 37.6 $\mu\text{mol Co}:\text{mol}^{-1} \text{PO}_4^{3-}$ calculated from dissolved concentrations was similar to values observed in the subarctic Pacific, but approximately tenfold lower than values in the Eastern Tropical Pacific and Equatorial Atlantic. The ecological stoichiometries for dissolved Co and Zn suggest a greater overall use of Zn relative to Co in the shallow waters of the Ross Sea, with a $\text{Co}:\text{PO}_4^{3-}/\text{Zn}:\text{PO}_4^{3-}$ ratio of 1:17. Comparison of these observed stoichiometries with values estimated in culture studies suggests that Zn is a key micronutrient that likely influences phytoplankton diversity in the Ross Sea. In contrast, the observed ecological stoichiometries for Co were below values necessary for the growth of eukaryotic phytoplankton in laboratory culture experiments conducted in the absence of added zinc, implying the need for significant Zn nutrition in the Zn-Co cambialistic enzymes. The lack of an obvious kink in the dissolved $\text{Co}:\text{PO}_4^{3-}$ relationship was in contrast to $\text{Zn}:\text{PO}_4^{3-}$ and $\text{Cd}:\text{PO}_4^{3-}$ kinks previously observed in the Ross Sea. A mechanism for kink formation is proposed where Zn and Cd uptake in excess of

Cobalt in the Ross Sea

M. A. Saito et al.

Title Page

Abstract

Introduction

Conclusions

References

Tables

Figures

◀

▶

◀

▶

Back

Close

Full Screen / Esc

Printer-friendly Version

Interactive Discussion



that needed for optimal growth occurs at the base of the euphotic zone, and no clear Co kink occurs because its abundances are too low for excess uptake. An unusual characteristic of Co geochemistry in the Ross Sea is an apparent lack of Co scavenging processes, as inferred from the absence of dCo removal below the euphotic zone. We hypothesize that this vertical distribution reflects a low rate of Co scavenging by Mn oxidizing bacteria, perhaps due to Mn scarcity, relative to the timescale of the annual deep winter mixing in the Ross Sea. Thus Co exhibits nutrient-like behavior in the Ross Sea, in contrast to its hybrid-type behavior in other ocean regions, with implications for the possibility of increased marine Co inventories and utility as a paleoceanographic proxy.

1 Introduction

The Ross Sea is a region of considerable biological and geochemical interest due to its intense annual phytoplankton bloom and associated carbon export (Arrigo et al., 1998; DiTullio et al., 2000). The sea overlies a continental shelf adjacent to the Antarctic continent and is mostly covered by sea ice in the austral winter. Seasonal melting forms the Ross Sea Polynya, which typically opens to the Southern Ocean in late summer. The seasonal phytoplankton bloom in the Ross Sea Polynya is the largest such feature in the Southern Ocean, and typically consists of an initial *Phaeocystis antarctica* bloom followed by mixed assemblages dominated by diatoms (DiTullio and Smith, 1996; Arrigo et al., 1999). This intense phytoplankton bloom results in a substantial seasonal drawdown of macronutrients and CO₂ within the polynya (Smith et al., 2006; Gordon et al., 2000).

There have been a number of trace metal-phytoplankton studies in the Ross Sea (Coale et al., 2005; Fitzwater et al., 2000; Sedwick et al., 2000; Bertrand et al., 2007; Martin et al., 1990). The Ross Sea Polynya exhibits nutrient-like depletion of dissolved iron to low concentrations (~0.1 nM) that has been shown to limit algal growth rates (Coale et al., 2003; Bertrand et al., 2007; Sedwick et al., 2000; Cochlan et al., 2002; Martin et al., 1990). Enhanced iron concentrations have been observed in proximity to

Cobalt in the Ross Sea

M. A. Saito et al.

Title Page

Abstract

Introduction

Conclusions

References

Tables

Figures

◀

▶

◀

▶

Back

Close

Full Screen / Esc

Printer-friendly Version

Interactive Discussion



melting sea ice and the sea floor, implicating these as important regional sources of dissolved iron (Coale et al., 2005; Fitzwater et al., 2000; Sedwick and DiTullio, 1997; Sedwick et al., 2000, 2010). Zinc also shows a seasonal drawdown, with a significant labile particulate fraction that allows recycling of Zn in the upper water column (Coale et al., 2005; Fitzwater et al., 2000). However, bottle incubation experiments with zinc additions did not find evidence of zinc limitation of phytoplankton growth rates (Coale et al., 2003). Cobalt measurements were included in a previous geochemical study of the Ross Sea (Fitzwater et al., 2000), yet there was little discussion of its geochemistry in that study. We recently documented colimitation of phytoplankton growth by iron and the cobalt-containing vitamin B₁₂ biomolecule in the Ross Sea during early austral summer 2005 (Bertrand et al., 2007), similar to reports of B₁₂ colimitation of phytoplankton in other high latitude and coastal regions (Gobler et al., 2007; Panzeca et al., 2006; Sañudo-Wilhelmy et al., 2006). The mechanism for this colimitation in the Ross Sea appears to be related to the source of B₁₂: the capacity for B₁₂ biosynthesis is only present in some bacteria and archaea and is absent in all eukaryotic phytoplankton, while this vitamin is required by a majority of phytoplankton (Droop, 1974, 2007). The extent of the phytoplankton iron-B₁₂ colimitation response was observed to be inversely related to bacterial abundances (Bertrand et al., in prep., 2007), consistent with the notion that the B₁₂ biosynthesizing community is at times inadequate to supply iron replete phytoplankton in these experiments. The Ross Sea may be particularly prone to B₁₂ colimitation due to the absence of B₁₂-producing cyanobacterial populations in polar waters and the low heterotrophic bacterial abundances in the Ross Sea during austral spring (Ducklow et al., 2001), creating a temporal lag between B₁₂ production and phytoplankton demand. Additions of inorganic cobalt did not stimulate growth in shipboard bioassay experiments (Bertrand et al., 2007), in contrast to other tropical regions where iron-cobalt colimitation has been observed (Saito et al., 2005, 2008). In addition, cobalt has been suggested to limit B₁₂ biosynthesis and community growth in sea ice phytoplankton and microbial communities in the Southern Ross Sea (Gordon and Sullivan, 2008).

Cobalt in the Ross Sea

M. A. Saito et al.

[Title Page](#)[Abstract](#)[Introduction](#)[Conclusions](#)[References](#)[Tables](#)[Figures](#)[◀](#)[▶](#)[◀](#)[▶](#)[Back](#)[Close](#)[Full Screen / Esc](#)[Printer-friendly Version](#)[Interactive Discussion](#)

**Cobalt in the Ross
Sea**

M. A. Saito et al.

Title Page

Abstract

Introduction

Conclusions

References

Tables

Figures

◀

▶

◀

▶

Back

Close

Full Screen / Esc

Printer-friendly Version

Interactive Discussion



Recent studies have found that micronutrient drawdown can be an important process in controlling the distribution of cobalt in ocean surface waters (Saito and Moffett, 2002; Saito et al., 2004, 2005; Noble et al., 2008; Ellwood et al., 2005; Ellwood and van den Berg, 2001). This contrasts with earlier reviews that characterized Co as controlled by scavenging removal processes (Whitfield and Turner, 1987; Nozaki, 1997). Elements such as Co, Fe, Cu, and (at high latitudes) Mn are considered hybrid-type metals, due to their oceanic distributions being strongly affected by both micronutrient uptake and scavenging processes (Noble et al., 2008; Bruland and Lohan, 2003). Organic ligands have been shown to bind cobalt very strongly, and are believed to provide an important control on the biological availability of cobalt in the ocean (Saito and Moffett, 2001; Saito et al., 2002, 2005, 2008; Ellwood et al., 2005; Ellwood and van den Berg, 2001). An experiment that compared Co enrichment incubations with and without the natural phytoplankton and microbial community demonstrated a biological origin of these cobalt ligands in the Costa Rica Dome region (Saito et al., 2005).

The water column geochemistry of cobalt has been shown to be connected to the geochemical cycles of Zn, Cd, and Mn. In the case of Co, Zn and Cd, these elements are capable of substituting in the active site of two important marine carbonic anhydrase metalloenzymes, while maintaining enzymatic activity (Saito et al., 2008; Lane et al., 2005; Roberts et al., 1997). Such biochemical substitution, known as cambialism, appears to be an important adaptation to life in ocean surface waters where these micronutrients are often depleted. In addition, low $p\text{CO}_2$ is known to cause several fold increases in the Cd:P ratio of particulate material in field experiments off the coast of California, likely due to upregulation of carbonic anhydrase enzymes (Cullen and Sherrell, 2005; Lane and Morel, 2000). In the case of Co and Mn, it has been shown that Co can be co-oxidized by manganese-oxidizing bacteria, and this is likely a critical pathway for the scavenging removal of Co from seawater (Moffett and Ho, 1996; Tebo et al., 1984).

Here we report measurements of total dissolved cobalt and cobalt speciation from two cruises in the Ross Sea, in austral spring of 2006 and austral summer of 2005.

Together these data provide information on the seasonal influences of sea ice retreat and phytoplankton succession on the distribution and cycling of cobalt in these Antarctic shelf waters. This first detailed examination of cobalt biogeochemistry in the Ross Sea serves as a companion study to our previous work on iron-B₁₂ colimitation in this region.

2 Materials and methods

2.1 Cruise track

Samples were collected on two cruises aboard the icebreaker RVIB *Nathaniel B. Palmer* in the Ross Sea as part of the CORSACS program (Controls on Ross Sea Algal Community Structure; see www.whoi.edu/sites/corsacs). The first cruise (NBP0601, CORSACS-1) occurred in austral summer 2005–2006, sampling the Ross Sea from 27 December 2005 to 23 January 2006 (Fig. 1a); the second cruise (NBP0608, CORSACS-2) occurred in austral spring-early summer 2006, sampling the Ross Sea from 8 November 2006 to 3 December 2006 (Fig. 1b), as well as in the Southern Ocean en route to and returning from the Ross Sea (Fig. 1c). The southern transect of CORSACS-1 entered the Bay of Whales (Station NX9), a natural indentation in the Ross Ice Shelf created by Roosevelt Island, which was the southernmost point reached by any ship at the time of our expedition.

2.2 Sampling methodologies

Seawater samples for trace metals analysis were collected using either 5 L Teflon-coated external spring Niskin-X samplers (General Oceanics Inc., described as NX samples) or 2.5 L and 10 L Go-Flo samplers (General Oceanics Inc.). The Niskin-X and 10 L Go-Flo bottles were deployed on a non-metallic line (Spectra) and closed using solid PVC messengers, whereas the 2.5 L Go-Flo samplers were mounted on an 11-position rosette unit modified for trace metal sampling, which was deployed

BGD

7, 6387–6439, 2010

Cobalt in the Ross Sea

M. A. Saito et al.

Title Page

Abstract

Introduction

Conclusions

References

Tables

Figures

◀

▶

◀

▶

Back

Close

Full Screen / Esc

Printer-friendly Version

Interactive Discussion



on the Spectra line. The rosette unit was programmed to close the samplers at pre-determined times on the upcast, with the precise depth of sampler closure determined using an integrated pressure sensor. The NX vertical profiles typically consisted of samples obtained from 9 Niskin-X samplers and two additional 10 L Go-Flo samplers; two vertical profiles (Station 54 and JR23) were obtained using only the Go-Flo samplers. Upon recovery, seawater samples were filtered through either 0.2 μm Supor Acropak filter cartridges (Pall Corp., for NX samples) pre-rinsed with filtered surface seawater, or 0.4 μm 144 mm polycarbonate membrane filters (GE, Osmonics, for Go-Flo samples) pre-cleaned with hydrochloric acid and Milli-Q deionized water. Cobalt was also measured in samples from three surface transects during CORSACS-1, collected using a trace-metal clean towed fish sampler deployed at ~ 3 m depth while underway at ~ 5 knots, with samples filtered using in-line 0.2 μm Supor Acropak filters (Bruland, 2005). All sample bottles were washed by soaking in 1% citranox overnight, rinsing thoroughly with Milli-Q, soaking in 10% Instra-analyzed HCl (Baker, Inc) for two weeks, followed by thorough Milli-Q rinsing and soaking with dilute (pH 2) Instra-analyzed HCl overnight. Bottles were rinsed with seawater prior to filling, and samples were refrigerated in darkness until analysis.

2.3 Total dissolved cobalt analyses

Total dissolved cobalt (dCo), which is defined as total Co determined in filtered UV-irradiated seawater samples, was analyzed using a cathodic stripping voltammetry (CSV) protocol modified from our previous studies (Saito and Moffett, 2001, 2002; Saito et al., 2004, 2005), with the addition of an automated titration system and a slight decrease in reagent usage. Briefly, seawater samples were digested in quartz tubes for 1 h at ambient pH using a Metrohm UV digester cooled with a Brinkmann water chiller. After this treatment, 9.25 mL of sample were pipetted into a Teflon sample cup that had been pre-rinsed with a small aliquot of sample; to this was added 50 μL of 0.5 M N-(2-hydroxyethyl)piperazine-N-(3-propanesulfonic acid) buffer (EPPS, Sigma), 30 μL of 0.1 M dimethylglyoxime (DMG; Sigma-Aldrich), and 0.75 mL of 1.5 M sodium

Cobalt in the Ross Sea

M. A. Saito et al.

Title Page

Abstract

Introduction

Conclusions

References

Tables

Figures

◀

▶

◀

▶

Back

Close

Full Screen / Esc

Printer-friendly Version

Interactive Discussion



nitrite (Fluka). These three reagents were purified as previously described (Saito and Moffett, 2001; Saito et al., 2004, 2005). Instrumentation consisted of two Metrohm 663 hanging mercury drop stands, each interfaced to an Eco-Chemie μ Autolab III, IME interface device, and portable Windows XP computer running GPES Electrochemical software (Eco-Chemie). Samples were purged for 3 min with filtered ultra high purity nitrogen gas, and voltammetric scans were performed at stirrer speed 5 using the large drop size. The CSV analysis involved deposition for 180 s at -0.6 V followed by a high speed scan from -0.6 V to -1.4 V at 10 V s $^{-1}$. Total dissolved cobalt was quantified by standard additions with a Metrohm Dosimat, using a 5×10^{-9} M CoCl₂ standard solution prepared from a 1000 ppm Co atomic absorption standard (Fisher Scientific). A GPES script was programmed for three replicate scans of the sample prior to adding Co, followed by a scan after each of four automated 25 pM Co additions. Cobalt concentrations were calculated by dividing the mean of the triplicate sample scans by the standard addition slope determined by linear regression analysis, followed by reagent dilution and blank corrections for each set of reagents: 5.5 ± 1.0 pM for the CORSACS-1 dCo profiles (sample set analyst M.A.S.), 13.4 pM for the CORSACS-1 dCo surface transects and labile Co measurements (sample set analyst A.E.N.), and 8.3 ± 1.3 pM for the CORSACS-2 dCo and labile Co measurements, (sample set analyst T.J.G.) as determined by running blank seawater as previously described (Saito and Moffett, 2001). Triplicate analysis of a surface sample from the Ross Sea using this automated method yielded 27.8 ± 0.7 pM (2.6% RSD). Linear regressions of the standard additions data typically yielded r^2 values of 0.99 or greater, with samples being reanalyzed if $r^2 < 0.99$. Analyses were primarily conducted at sea, although some refrigerated samples from CORSACS-2 were analyzed in our shore-based laboratory within two months after the cruise. This analytical method is identical to that used for our submitted analyses of the intercalibration samples and vertical profile from the US GEOTRACES intercalibration program (Bruland, 2010), with the exception that these CORSACS samples were run “fresh” at ambient pH, while GEOTRACES samples were acidified, stored, and neutralized prior to analysis.

Cobalt in the Ross Sea

M. A. Saito et al.

[Title Page](#)[Abstract](#)[Introduction](#)[Conclusions](#)[References](#)[Tables](#)[Figures](#)[◀](#)[▶](#)[◀](#)[▶](#)[Back](#)[Close](#)[Full Screen / Esc](#)[Printer-friendly Version](#)[Interactive Discussion](#)

2.4 Cobalt chemical speciation: labile cobalt

The chemical speciation of dissolved cobalt was determined using a high-throughput labile Co method as previously described (Saito et al., 2004, 2005). Briefly this approach involves the analytical system described above for total dissolved cobalt, now with overnight equilibration of filtered seawater with 3×10^{-4} M DMG, which allows for quantification of ligand within the detection window for K_{CoL} of $10^{13.7}$ to $10^{15.7}$, calculated using an estimated 50 pM natural organic cobalt ligand concentration and 10-fold range above and below a side reaction coefficient of α_{CoHDMG_2} of 28 460 (Saito et al., 2005). Conditional stability constants are not calculated in this high-throughput method. After equilibration, EPPS and nitrite are added and the sample is titrated with a Co standard as described for the dCo determinations above, but without the UV-irradiation treatment. The result is an estimation of what we refer to as labile cobalt, which is the dissolved cobalt that is not bound by the natural strong organic ligands following equilibration.

2.5 Cobalt uptake rates

Addition of the radiotracer ^{57}Co to natural seawater samples was used to measure the rate of cobalt uptake by phytoplankton ($>2 \mu\text{m}$) communities. $^{57}\text{CoCl}_2$ (Isotope Products Laboratories, Valencia, CA; 99% radionuclide purity in 0.1 M HCl) was diluted in pH2 Milli-Q water to $1.7 \mu\text{Ci mL}^{-1}$ (4.3 nM), and then again diluted to $\sim 0.1 \text{ nM}$ ^{57}Co in $0.4 \mu\text{m}$ -filtered seawater. The radiotracer was then allowed to equilibrate with the seawater for at least 24 h before beginning the rate measurements. For these measurements, 60 or 150 mL polycarbonate bottles were filled with unfiltered seawater collected in the trace-metal clean Niskin-X or Go-Flo bottles, deployed as described above. The polycarbonate bottles were initially cleaned as described above, and then re-used for additional measurements after successive rinses with 10% HCl, pH 2 Milli-Q water, and seawater. Within half an hour of the seawater collection, approximately 0.5 pmol L^{-1} of $^{57}\text{CoCl}_2$ was added to each bottle, then bottles were placed in a deckboard incubator

BGD

7, 6387–6439, 2010

Cobalt in the Ross Sea

M. A. Saito et al.

Title Page

Abstract

Introduction

Conclusions

References

Tables

Figures

◀

▶

◀

▶

Back

Close

Full Screen / Esc

Printer-friendly Version

Interactive Discussion



shaded to ~20% ambient surface irradiance with neutral density screening material. Ambient temperature ($-1\pm 1^\circ\text{C}$) was maintained by a constant flow of surface seawater through the incubators. After 24 h, the incubations were filtered through $2\ \mu\text{m}$ polycarbonate filter membranes and rinsed with 1–2 mL of $0.4\ \mu\text{m}$ -filtered seawater.

5 The filter was centered in a a tight-lid Petri dish (Fisher Scientific) sealed with Parafilm.

The ^{57}Co radioactivity on each filter was determined using a Canberra Germanium Gamma detector within 20 months of sample collection. Counts per minute at 122 keV were corrected for decay and normalized to % uptake per day, calculated by dividing the activity on each filter by the total activity added to each incubation bottle. Samples
10 were counted long enough to achieve a counting error $<5\%$. Cobalt concentrations and organic speciation were determined at each sampling depth for which a Co uptake rate measurement was made. Cobalt uptake rates were then calculated by multiplying the percent uptake per day by the total dissolved cobalt concentration. Control studies were conducted by killing the biological community with glutaraldehyde (1% final
15 concentration; Co added 3 h after glutaraldehyde added) or heat (180 mL sample microwave heated for 3×5 min; Co added 3 h after heat killed). Killed control treatments were filtered after 24 h incubation at 0°C in the dark.

2.6 Pigment and nutrient analyses

Phytoplankton pigment samples (0.5–2 L) were filtered (Whatman GF/F filters), flash
20 frozen in liquid nitrogen, and stored at -80°C prior to analysis by HPLC as previously described (DiTullio and Geesey, 2002), with a slight modification using the Zapata method (Zapata et al., 2000). Water column samples for pigments were collected using a standard CTD rosette system at the same locations as trace-metal water sample collections. Filtered samples for macronutrients were taken from the Niskin-X and Go-Flo trace metal samplers and analyzed at sea using an autoanalyzer method modified
25 from standard WOCE protocols (Gordon et al., 1993).

BGD

7, 6387–6439, 2010

Cobalt in the Ross Sea

M. A. Saito et al.

Title Page

Abstract

Introduction

Conclusions

References

Tables

Figures

◀

▶

◀

▶

Back

Close

Full Screen / Esc

Printer-friendly Version

Interactive Discussion



2.7 Data analysis and repository

Dissolved ecological stoichiometries were obtained from the slope of linear regressions. One-way and two-way least squares regressions were used for the vertical profile dCo dataset, with the former assuming one dependent and one independent variable, and the latter assuming two dependent variables and performed in MATLAB using the script lsqfitma.m. Previous studies used here for comparisons used one-way linear regressions, but the differences between slopes are small relative to the environmental variability discussed. The cobalt and nutrient data presented in this manuscript (a total of 463 dCo and labile cobalt values) have been deposited into the Biological and Chemical Oceanography Data Management Office database under the CORSACS program (BCO-DMO, <http://bcodmo.org/>).

3 Results and discussion

The Ross Sea of Antarctica serves as an ideal end member in the study of the marine biogeochemistry of cobalt. With its extreme low temperatures, seasonal sea ice cover, high biological productivity, and low atmospheric dust inputs, this sea presents an environment quite distinct from other oceanic regimes where Co has been studied. Here we consider total dissolved and cobalt speciation data from cruises in austral summer 2005 and austral spring 2006 that together provide a seasonal perspective on the distribution of this micronutrient element. The Ross Sea Polynya was almost completely open during the summer 2005–2006 cruise, but was only in the early stages of formation during the spring 2006 cruise, as revealed by the geographic distribution of stations occupied during the cruises (Fig. 1a,b) and estimated sea ice coverage shown by Sedwick et al. (2010). In this study we observed four salient features with regard to the geochemistry of cobalt: 1) nutrient-like vertical profiles, 2) correlations between cobalt and soluble reactive phosphorus, 3) no evidence of scavenging removal in intermediate waters, and 4) non-saturating concentrations of strong cobalt-binding ligands resulting in the presence of significant concentrations of labile cobalt.

BGD

7, 6387–6439, 2010

Cobalt in the Ross Sea

M. A. Saito et al.

Title Page

Abstract

Introduction

Conclusions

References

Tables

Figures

◀

▶

◀

▶

Back

Close

Full Screen / Esc

Printer-friendly Version

Interactive Discussion



3.1 Dissolved cobalt: vertical profiles and surface transects

Total dissolved cobalt profiles from 11 stations in austral summer 2005–2006 (CORSACS-1 cruise) and 7 stations in austral spring 2006 (CORSACS-2 cruise) are presented in Figs. 2 and 3. All profiles from the summer cruise (Fig. 2) reveal surface depletion that likely reflects biological uptake and export. The Bay of Whales station NX9 showed the least surface depletion, likely due to lower productivity and recent retreat of sea-ice cover. Surface depletion was also evident in most profiles from the austral spring cruise (Fig. 3), but to a lesser extent than observed in the preceding summer. Almost all dCo profiles showed strong similarity in vertical structure to soluble reactive phosphate, consistent with biological uptake and vertical export of dCo due to phytoplankton. The dCo profiles from each cruise were used to create quasi-zonal sections that clearly reveal the surface depletion of dCo across the Ross Sea region (Fig. 4, top panels). The phytoplankton assemblage present when dCo and PO_4^{3-} were both drawn down included *Phaeocystis antarctica* and diatoms, as determined by pigment analyses (Fig. 4, bottom panels). The vertical sections in Fig. 4 do not suggest any obvious sources of dissolved cobalt to the water column, such as atmospheric, sedimentary or meltwater inputs. In contrast, evidence for the latter two sources were seen in the water column iron data from these cruises (Sedwick et al., 2010). This result is not particularly surprising since atmospheric deposition tends to produce surface maxima in dCo in regions of high dust deposition, such as the Western Philippine Sea (Wong et al., 1995; Saito and Moffett, 2002). Similarly, large plumes of dissolved cobalt appear in oceanic oxygen minimum zones, likely due to a combination of escape of Co from sediments exposed to low bottom water oxygen as well as stabilization of Co in the low oxygen water column (Heggie and Lewis, 1984; Saito et al., 2004, 2005; Noble et al., 2008). Since the Ross Sea is a relatively well oxygenated region these processes may not be as important here. However, our sampling strategy did not include samples in close proximity to the sea floor that might reveal concentration anomalies associated with small input fluxes. Also, given the low Co:Fe ratio ($\sim 1:2600$) of crustal

BGD

7, 6387–6439, 2010

Cobalt in the Ross Sea

M. A. Saito et al.

Title Page

Abstract

Introduction

Conclusions

References

Tables

Figures

◀

▶

◀

▶

Back

Close

Full Screen / Esc

Printer-friendly Version

Interactive Discussion



material (Taylor and McLennan, 1985), the accumulation and release of terrigenous material from sea ice would likely have a more subtle effect on the distribution of cobalt relative to iron, depending on relative solubilities of these two elements in lithogenic particles (Thuróczy et al., 2010; Sedwick et al., 2007).

Four surface-water transects of cobalt from the austral summer cruise were obtained using the underway towed fish. Trends in surface dCo (~ 3 m depth) were broadly similar to the macronutrients, as shown in Fig. 5. In transect 2, for example, dCo concentrations varied between 17 and 59 pM, but were typically between 20–40 pM, with an average of 33 ± 7.2 pM. The very western edge of the transect was near the seasonal ice edge, and showed lower salinity, nutrients, and dCo, particularly along 76°S and 76.5°S . The western portion of the surface transects also coincided with elevated primary productivity, particularly along the 75°S transect near Terra Nova Bay.

3.2 Evidence for micronutrient behavior: correlation of cobalt with phosphate

The similarities in the vertical and horizontal distributions of cobalt and phosphate were statistically significant based on a two-way linear regression of 164 vertical profile samples from CORSACS-1 and 2 (Table 1 and Fig. 6a, both seasons together $r^2=0.87$; CORSACS-1 data only $r^2=0.88$). This analysis revealed a strong seasonal signal, with most of the spring cruise samples having total dissolved cobalt values greater than ~ 45 pM and phosphate greater than ~ 1.75 μM , while for the summer cruise samples some cobalt and phosphate concentrations overlapped with those of the spring, although many were depleted well below the spring concentrations due to biological activity and export from the euphotic zone (Fig. 6a). The surface transect samples from the summer cruise fall at the low end of the seasonal variability (~ 30 pM dCo, ~ 1.5 μM PO_4^{3-} , Fig. 6b), with a thread of data plateauing at ~ 20 pM dCo while phosphate continues to be depleted to ~ 0.1 μM , perhaps due to a residual amount of complexed cobalt with low resultant bioavailability. A number of samples from surface transects yield data that lie off the linear dCo vs. PO_4^{3-} trend, suggesting an external input such as melting

BGD

7, 6387–6439, 2010

Cobalt in the Ross Sea

M. A. Saito et al.

Title Page

Abstract

Introduction

Conclusions

References

Tables

Figures

◀

▶

◀

▶

Back

Close

Full Screen / Esc

Printer-friendly Version

Interactive Discussion



sea ice. Input from sea ice melt might be expected to cause deviations from the linear $d\text{Co}:\text{PO}_4^{3-}$ relationship, since lithogenic aeolian material should have an elevated Co:P ratio relative to biogenic matter. In addition, seawater metal: PO_4^{3-} relationships ($\text{Cd}:\text{PO}_4^{3-}$ in particular) do not appear to be preserved within sea ice (Hendry et al., 2009), and sea ice can be quite depleted in phosphorus (McMinn et al., 1999). In general, deviation from the seawater metal:P relationship is expected to result from processes other than biological uptake and remineralization, such as aeolian deposition, particle scavenging, and oxidation/precipitation by Mn-oxidizing bacteria (Tebo et al., 1984), which should produce vectors in metal:phosphate space that are vertical rather than diagonal, as indicated in Fig. 7 (Noble et al., 2008). This type of vector analysis in $\text{Co}:\text{PO}_4^{3-}$ space appears to be useful in identifying sporadic and/or subtle influences by their deviation from the coherent uptake and remineralization signal within large datasets such as this. In contrast to this micronutrient behavior for dCo in the Ross Sea, the vertical structure of dCo at two Southern Ocean stations NX12 and JR23 (Fig. 1, right panel) showed increasing deviation from the observed Ross Sea phosphate relationship moving northward, where NX12 showed increased Co relative to PO_4^{3-} at ~ 100 m and JR23 showed little coherence with phosphate (Figs. 3 and 6b).

3.3 Chemical speciation of cobalt

Cobalt speciation measurements revealed that while strong cobalt-binding ligands were present in all of the samples, a significant fraction of the total dissolved cobalt was not complexed by these ligands (Figs. 3 and 6c). We have previously described this unbound fraction as “labile” cobalt, with the assumption that it is bound by inorganic ligands or weak organic ligands (Saito et al., 2004, 2005). Comparison of total dissolved Co and labile Co in the Ross Sea shows that labile Co was usually detectable in significant concentrations (Fig. 6d). These cobalt-binding ligands were strong enough to be measured within our conditional stability constant detection window of $10^{13.7}$ to $10^{15.7}$, with experiments suggesting that the ligand strength exceeded

BGD

7, 6387–6439, 2010

Cobalt in the Ross Sea

M. A. Saito et al.

Title Page

Abstract

Introduction

Conclusions

References

Tables

Figures

◀

▶

◀

▶

Back

Close

Full Screen / Esc

Printer-friendly Version

Interactive Discussion



our detection window ($K_{\text{cond}} \geq 10^{15.7}$, data not shown), as we have observed elsewhere (Saito et al., 2005). The concentration of labile cobalt is likely important in determining the biological availability of cobalt to eukaryotic phytoplankton (Saito et al., 2002, 2004). Moreover, the presence of measurable labile cobalt throughout the water column of the Ross Sea contrasts with observations in tropical and subtropical regions, where cobalt is often completely bound by strong ligands in the upper euphotic zone (Noble et al., 2008; Saito and Moffett, 2001; Saito et al., 2004, 2005). Exceptions to this appear to be related to significant sources of cobalt, such as in the Peru Upwelling Region, where a large flux of cobalt is thought to enter the system as labile cobalt, and where large phytoplankton community shifts occurred concurrently with changes in cobalt speciation (Saito et al., 2004).

It seems likely that cobalt-binding ligands are produced as a by-product of vitamin B₁₂ biosynthesis and perhaps subsequent photochemical alteration. By this logic, the presence of microbes capable of producing the cobalt-containing vitamin B₁₂ should be important to the generation of cobalt-binding ligands. Of the microbes potentially present in seawater, all publicly available marine cyanobacteria with genomes sequenced thus far appear to have components of the biosynthetic pathway (30 genomes as of July 2010, including *Crocospaera*, *Trichodesmium*, *Synechococcus*, *Prochlorococcus*, and *UCYN-A*; pers. obs.; Rodionov et al., 2003), while only some heterotrophic bacteria (SAR11 cannot) and no eukaryotic phytoplankton are capable of making B₁₂ (Croft et al., 2005; Bertrand et al., 2007; Giovannoni et al., 2005). Moreover, none of the Antarctic heterotrophic bacteria with genomes currently sequenced contain the B₁₂ biosynthetic pathway (Bertrand et al., in prep.). In the Ross Sea, the marine cyanobacteria are numerically non-existent based on microscopy and pigment analysis (Bertrand et al., 2007; Caron et al., 2000; DiTullio, 2003), whereas they comprise a significant component of the microbial community in tropical and subtropical environments (Campbell et al., 1994; DiTullio, 2003). In addition, the heterotrophic bacterial community is known to be less numerous and exhibit a strong seasonal cycle in the Ross Sea, in contrast to temperate and tropical oceans (Ducklow et al., 2001). Amplification of the

BGD

7, 6387–6439, 2010

Cobalt in the Ross Sea

M. A. Saito et al.

Title Page

Abstract

Introduction

Conclusions

References

Tables

Figures

◀

▶

◀

▶

Back

Close

Full Screen / Esc

Printer-friendly Version

Interactive Discussion



cbiA cobalamin biosynthesis gene from DNA purified from the Ross Sea microbial community and the detection of the associated protein via mass spectrometry reveals an active population of heterotrophic bacteria capable of B₁₂ biosynthesis (Bertrand et al., 2010). The relationship between B₁₂ and these cobalt-binding ligands is still uncertain, although we have observed that each has distinctly different chemical properties (Saito, unpublished data, July 2010), suggesting they are not identical, but rather are linked via chemical transformation. If cobalt ligands are indeed a degradation product of vitamin B₁₂, we hypothesize that the lack of cyanobacteria and low abundance of heterotrophic bacteria in the Ross Sea in the austral spring results in a low production rate of vitamin B₁₂ and perhaps a commensurate low cobalt ligand production rate in the Ross Sea relative to temperate and tropical oceans. As mentioned above, we and others have observed phytoplankton colimitation by iron and vitamin B₁₂ in the Ross Sea, Southern Ocean, and coastal environments (Bertrand et al., 2007; Gobler et al., 2007; Panzeca et al., 2006; Sañudo-Wilhelmy et al., 2006). Yet the heterotrophic bacteria cell numbers do increase by the end of austral summer in the Ross Sea (Ducklow et al., 2001; Bertrand et al., 2007): the presence of labile cobalt in the Ross Sea water column suggests that either the population of microbes present does not have comparable B₁₂ production rates relative to the high summer phytoplankton B₁₂ demand, and/or that the Ross Sea microbial community is not being lysed and grazed as rapidly as in low latitude microbial loop environments to allow the saturation of cobalt by ligands that we observe in regions such as the Costa Rica Dome and Sargasso Sea (Saito and Moffett, 2001; Saito et al., 2005). Thus, the distinctiveness of the polar bacterial community of the Ross Sea provides a likely explanation for both the lack of saturating concentrations of cobalt-binding ligands and the colimitation of phytoplankton growth by vitamin B₁₂ in these waters.

We have previously reported a biological origin for cobalt-binding ligands, through field experiments with a cyanobacterially-dominated microbial community (with marine *Synechococcus* cellular abundances >10⁶ cells mL⁻¹) in the Costa Rica Dome region of the Eastern Tropical North Pacific (ETNP). In that study, control treatments

BGD

7, 6387–6439, 2010

Cobalt in the Ross Sea

M. A. Saito et al.

Title Page

Abstract

Introduction

Conclusions

References

Tables

Figures

◀

▶

◀

▶

Back

Close

Full Screen / Esc

Printer-friendly Version

Interactive Discussion



where the microbial population was removed by filtration did not show production of cobalt-binding ligands (Saito et al., 2005). Recently, Ellwood et al. have argued that the presence of increased abundances of cobalt-binding ligands south of the South Atlantic sector of the Antarctic Polar Front (APF), compared to a station north of the APF, contradicts our assertion that cyanobacteria contribute to the production of cobalt-binding ligands since *Synechococcus* populations largely disappear south of the APF (Ellwood et al., 2005). The results of the present study may reconcile our previous results from the ETNP and elsewhere with the data reported by Ellwood et al. (2005) based on three lines of reasoning. First, in our previous study we were careful to argue that the cyanobacterially-dominated microbial *community* was a source of ligands rather than solely the *Synechococcus* population since this field experiment could not differentiate the microbial source. Second, if the cobalt-containing vitamin B₁₂ molecule is the source of cobalt-binding ligands, then populations of bacteria or archaea capable of biosynthesizing B₁₂ are required to produce cobalt-binding ligands. The Costa Rica Dome and the Ross Sea then represent opposite extremes: very high cyanobacteria and heterotrophic cell abundances in the former, and no measurable cyanobacteria population and seasonally varying heterotrophic bacteria abundances in the latter, as described above (Ducklow et al., 2001). Ellwood et al.'s (2005) observation of a higher abundance of cobalt-binding ligands south of the APF relative to north of the APF could reflect increased heterotrophic bacterial abundances that accompany the three-fold increase in primary productivity they observed between their southern and northern APF sites. Third, in this study we measured cobalt speciation at two oceanic stations in the Southern Ocean (NX12 and JR23; Figs. 1 and 3) that showed labile cobalt (~20 pM) throughout the water column, similar to our findings in the Ross Sea. Together these observations are consistent with the notion of a relationship between B₁₂ biosynthesizing bacterial populations and cobalt-binding ligands: In the Ross Sea and our two oceanic Southern Ocean stations, cobalt-binding ligands are observed (Fig. 3), yet the cobalt ligands do not exist in saturating concentrations, resulting in much greater bioavailability of Co than is observed in tropical and subtropical regions (Saito et al.,

BGD

7, 6387–6439, 2010

**Cobalt in the Ross
Sea**

M. A. Saito et al.

Title Page

Abstract

Introduction

Conclusions

References

Tables

Figures

◀

▶

◀

▶

Back

Close

Full Screen / Esc

Printer-friendly Version

Interactive Discussion



2005). The highly productive interfacial waters near the APF would then represent a situation intermediate between the Ross Sea and the tropics.

3.4 Ecological stoichiometry of cobalt inferred from correlation with phosphate, and comparison with Cd and Zn stoichiometries

5 Phytoplankton uptake and subsequent remineralization of biomass result in the removal and addition of bioactive metals and phosphorus at ratios reflective of the aggregate stoichiometry of the phytoplankton and microbial community. The sinking of organic material creates a biochemical circulation of elements that is superimposed upon physical circulation processes (Redfield et al., 1963). Based on the extent to which this biochemical circulation modifies the composition of seawater, the slope of the *dissolved* nutrient to phosphate relationship can reflect the aggregate stoichiometry of biological processes. For example, Redfield et al. observed similarities between the ratios of seawater $\text{NO}_3^-:\text{PO}_4^{3-}$ distributions and the elemental N:P composition of marine plankton (Redfield et al., 1963), and more recently the cellular metal contents of phytoplankton have been compared with trace metal abundances in seawater (e.g., Fitzwater et al., 2000; Lane et al., 2009; Noble et al., 2008; Saito and Moffett, 2002; Saito et al., 2004; Sunda and Huntsman, 1995, 2000). This characterization of elemental stoichiometries in nature has been termed “ecological stoichiometry”, defined broadly as “the balance of multiple chemical substances in ecological interactions and processes” (Sterner and Elser, 2002). Correlations between dissolved Cd and PO_4^{3-} or between dissolved Zn and silicic acid, have long been recognized as oceanographically important relationships (Boyle et al., 1976; Bruland, 1980), leading to the application of Cd as a paleoproxy for seawater phosphate (Boyle, 1988). However, the biochemical basis for these relationships is only partially characterized (Lane et al., 2005; Ellwood and Hunter, 2000). Recent studies have observed correlations between dissolved cobalt and phosphate concentrations in shallow waters (e.g., Noble et al., 2008; Saito and Moffett, 2002; Saito et al., 2004; Sunda and Huntsman, 1995), implying the importance of micronutrient processes over earlier suggestions that atmospheric input

Cobalt in the Ross Sea

M. A. Saito et al.

Title Page

Abstract

Introduction

Conclusions

References

Tables

Figures

◀

▶

◀

▶

Back

Close

Full Screen / Esc

Printer-friendly Version

Interactive Discussion



and scavenging processes dominate the oceanic distribution of cobalt (Whitfield and Turner, 1987). Yet explanations for these linear metal:macronutrient relationships and, in particular, apparent “kinks” in these linear relationships (de Baar et al., 1994; Boyle et al., 1981; Boyle, 1988; Cullen, 2006; Frew and Hunter, 1992, 1995; Saager and de Baar, 1993), have arguably not reached a consensus due to the presence of multiple processes and subtle complexities such as: 1) limited knowledge of the underlying biochemistries; 2) the influence of iron deficiency, which depresses phytoplankton growth rate but not metal uptake, resulting in changes in metal:P ratios through a process called growth rate dilution (Cullen et al., 2003; Cullen, 2006; Lane et al., 2009; Sunda and Huntsman, 2000), as well as causing upregulation of ferrous iron transporters that also transport other divalent cations (Lane et al., 2008); 3) biochemical substitution of Zn, Cd, or Co, for example, in the active sites of metalloenzymes (Morel et al., 1994; Saito et al., 2008); and 4) the role of organic ligands in controlling metal bioavailability (Bruland and Lohan, 2003). These issues will be discussed below in the context of our Ross Sea data.

In the Ross Sea we estimate a seawater Co:PO_4^{3-} ecological stoichiometry of $37.6 \mu\text{mol mol}^{-1}$ based on a two-way linear regression of the dissolved species concentrations using the vertical profile datasets inclusive of all depths and both sampling seasons (Fig. 6a, Table 1; a one-way regression yields a similar value of $28.3 \mu\text{mol mol}^{-1}$ with r^2 of 0.75). This value is quite similar to the dissolved Co:PO_4^{3-} ratios of $35\text{--}40 \mu\text{mol mol}^{-1}$ observed in the upper 150 m of the subarctic Pacific (Martin et al., 1989; Sunda and Huntsman, 1995). However, other regions such as the Eastern Tropical Pacific and Equatorial Atlantic display Co:PO_4^{3-} stoichiometries that are approximately an order of magnitude higher than the Ross Sea and subarctic Pacific ratios (248 and $560 \mu\text{mol mol}^{-1}$; Saito and Moffett, 2002; Saito et al., 2004). The juxtaposition of an inter-seasonal coherence for seawater Co:PO_4^{3-} ecological stoichiometry (where both seasons data falls along a single line) in the Ross Sea relative to the large geographic variability in Co:PO_4^{3-} stoichiometries described above (Table 1) implies that the organization of dissolved cobalt in the water column occurs on timescales that are longer

BGD

7, 6387–6439, 2010

Cobalt in the Ross Sea

M. A. Saito et al.

[Title Page](#)[Abstract](#)[Introduction](#)[Conclusions](#)[References](#)[Tables](#)[Figures](#)[◀](#)[▶](#)[◀](#)[▶](#)[Back](#)[Close](#)[Full Screen / Esc](#)[Printer-friendly Version](#)[Interactive Discussion](#)

than seasonal processes, but shorter than that of large-scale circulation processes. This rough timescale is also consistent with the observations of lack of scavenging and uptake rates described below.

The ecological stoichiometry of Co needs to be considered in conjunction with those of Zn and Cd because of the biochemical substitution within enzymes as described in the Introduction. Correlations of both dissolved Zn and Co with phosphate were observed in shallow waters of the subarctic Pacific, and were described as evidence for biological uptake and remineralization (Sunda and Huntsman, 1995; Martin et al., 1989). In that region the dissolved Zn and PO_4^{3-} relationship showed a distinct kink causing two stoichiometries: a dissolved Zn: PO_4^{3-} ratio of $\sim 4600 \mu\text{mol mol}^{-1}$ below ~ 150 m depth (where $\text{PO}_4^{3-} > \sim 1.2 \mu\text{M}$), and a much lower Zn: PO_4^{3-} ratio of ~ 250 in shallow waters (see Fig. 8 and Table 2; data from Martin et al., 1989). Interestingly, dissolved cobalt was correlated with PO_4^{3-} only in the shallow waters, which Sunda and Huntsman (1995) attributed to the biochemical substitution of Co for some of the biological Zn demand in the euphotic zone. These workers estimated a larger nutritional role of Zn relative to Co in shallow waters, based on ecological stoichiometry ratios for dissolved Zn: PO_4^{3-} /Co: PO_4^{3-} of 6:1–10:1. However, they also pointed out that the >100 -fold increase in dissolved Co:Zn concentrations between the nutricline and surface waters could also contribute to growth of phytoplankton with distinct Co requirements, such as the coccolithophore *E. huxleyi* and cyanobacteria (Sunda and Huntsman, 1995; Saito et al., 2002). No linear relationship between Co: PO_4^{3-} was observed in deeper waters of the subarctic Pacific, likely due to the influence of scavenging (see below).

We have performed a similar comparison of ecological stoichiometries in the Ross Sea, using our dissolved Co data and the dissolved Zn and Cd data reported from the austral summer of 1990 by Fitzwater et al. (2000). Here Zn and Cd both showed correlations with phosphate, with Zn showing a kink at $\sim 1.5 \mu\text{M}$ PO_4^{3-} to a lower Zn: PO_4^{3-} ratio and Cd showing a kink at $\sim 1 \mu\text{M}$ PO_4^{3-} (Fig. 8g and h; Table 2). The calculated dissolved phase ecological stoichiometries were roughly similar to

BGD

7, 6387–6439, 2010

Cobalt in the Ross Sea

M. A. Saito et al.

Title Page

Abstract

Introduction

Conclusions

References

Tables

Figures

◀

▶

◀

▶

Back

Close

Full Screen / Esc

Printer-friendly Version

Interactive Discussion



those of the subarctic Pacific values, with values of $7580 \mu\text{mol mol}^{-1}$ ($\text{Zn}:\text{PO}_4^{3-}$) and $606 \mu\text{mol mol}^{-1}$ ($\text{Cd}:\text{PO}_4^{3-}$) in the nutricline and below, and of $509 \mu\text{mol mol}^{-1}$ ($\text{Zn}:\text{PO}_4^{3-}$) and $178 \mu\text{mol mol}^{-1}$ ($\text{Cd}:\text{PO}_4^{3-}$) in shallow waters (≤ 40 m; Table 2). Cobalt analyses were also included in the Fitzwater et al. study; however, no clear relationship between Co and P was observed. This may reflect limited analytical precision for Co or the recently documented artifact arising from cobalt-binding ligands, which necessitate UV-irradiation of samples prior to dissolved Co determination since the complexes do not dissociate at pH 2 (Saito and Schneider, 2006; Bruland, 2010), although this analytical issue would presumably apply to the subarctic Pacific dataset as well (Martin et al., 1989). While dissolved $\text{Zn}:\text{PO}_4^{3-}$ and $\text{Cd}:\text{PO}_4^{3-}$ ratios are much lower in shallow waters relative to depth, the dissolved $\text{Co}:\text{PO}_4^{3-}$ stoichiometry is relatively low ($37.6 \mu\text{mol mol}^{-1}$) and constant throughout the water column based on our 2005/2006 data, in contrast to the subarctic Pacific data where the $\text{Co}:\text{PO}_4^{3-}$ relationship breaks down below shallow waters (Figs. 8d and 9b). While the Fitzwater et al. data (2000) are from an earlier expedition (summer 1990), we assume some consistency of the Ross Sea phytoplankton stoichiometry for the purpose of our comparisons.

The estimated ecological stoichiometries for dissolved Co, Cd, and Zn in the Ross Sea can be compared to the trace metal requirements of phytoplankton measured by physiological studies (Sunda and Huntsman, 1995, 2000), as shown in Fig. 10. Of particular interest, the deep water dissolved $\text{Zn}:\text{PO}_4^{3-}$ stoichiometries of both the Ross Sea and subarctic Pacific were in great excess of the minimum Zn quotas required for optimum growth of three eukaryotic phytoplankton (*Emiliania huxleyi*, *Thalassiosira oceanica*, and *Thalassiosira pseudonana*), while the shallow $\text{Zn}:\text{P}$ ratio was in excess of the requirements of the small diatom *T. oceanica* but not those of the larger diatom *T. pseudonana*. These variations in dissolved Zn requirements have been shown to be related to the higher surface area to volume ratio that accompanies smaller cell size, where uptake rates approach diffusion limitation at low Zn^{2+} concentrations (Sunda and Huntsman, 1992, 1995). This comparison suggests that the Zn availability could

BGD

7, 6387–6439, 2010

Cobalt in the Ross Sea

M. A. Saito et al.

Title Page

Abstract

Introduction

Conclusions

References

Tables

Figures

◀

▶

◀

▶

Back

Close

Full Screen / Esc

Printer-friendly Version

Interactive Discussion



influence phytoplankton species composition in the Ross Sea by selecting for smaller diatoms that have lower cellular Zn requirements. In contrast, our estimated Co:PO₄³⁻ ecological stoichiometry value was found to be below the phytoplankton growth requirements when in the absence of added Zn in the three strains listed above (~200–1000 μmol Co:mol P; Sunda and Huntsman, 1995). These observations imply the need for Zn nutrition in the Zn/Co cambialistic enzymes due to low Co abundance in the Ross Sea. Similarly, Zn and Co physiological studies with a culture of *Phaeocystis antarctica* showed optimal growth rates and cell yields with Zn rather than Co (Saito and Goepfert, 2008). Together these calculations provide evidence for a greater overall use of zinc relative to cobalt in the shallow waters of the Ross Sea, with a ratio of dissolved Zn:Co stoichiometries of 17:1 (Zn:PO₄³⁻/Co:PO₄³⁻). This ratio suggests that Ross Sea phytoplankton have an even greater nutritional reliance on Zn versus Co, relative to the subarctic Pacific (Co:Zn ~1:6–1:10, see above).

An intriguing aspect of the Co and PO₄³⁻ relationship in the Ross Sea is the lack of an obvious kink in the vertical profile dataset (Fig. 6a), in contrast to Cd and Zn which both showed clear kinks in the Ross Sea (Fig. 8g and h; Fitzwater et al., 2000). The causes of the kink in the relationship between Cd and phosphate has been the subject of significant discussion in recent years (Boyle, 1988; de Baar, 1994; Sunda and Huntsman, 2000; Cullen, 2006; Cullen et al., 2003; Elderfield and Rickaby, 2000). Two compelling mechanistic explanations involve the influence of either Zn or Fe on Cd uptake by phytoplankton. The Zn mechanism involves depletion of Zn by phytoplankton uptake, resulting in an increase in Cd uptake through induction of phytoplankton Cd/Co transporters and replacement of Cd or Co for Zn within enzymes (Sunda and Huntsman, 2000). Zn binding ligands also likely contribute to this effect: as dissolved Zn falls below the Zn-binding ligand concentration, the free zinc concentrations will decrease precipitously. An alternative (or additional) mechanism involves decreases in the uptake of major cellular elements (e.g., C or P) due to iron growth rate limitation, while maintaining (or increasing) Cd uptake rates, to create the enhanced cellular Cd:P ratios (Cullen et al., 2003, 2006; Sunda and Huntsman, 2000). This process is described as

BGD

7, 6387–6439, 2010

Cobalt in the Ross Sea

M. A. Saito et al.

Title Page

Abstract

Introduction

Conclusions

References

Tables

Figures

◀

▶

◀

▶

Back

Close

Full Screen / Esc

Printer-friendly Version

Interactive Discussion



5 a growth rate dilution effect, where phosphate uptake is more sensitive to growth rate than metal uptake. A recent study expanded on this mechanism where iron limitation of a diatom was found to cause an upregulation of ferrous iron transporters, which concurrently resulted in increased transport of other divalent cations such as cadmium (Lane et al., 2008). Both the Zn depletion and Fe limitation mechanisms result in increased Cd:P ratios in phytoplankton that in turn should deplete dissolved Cd relative to P in the upper water column with export and remineralization of particulate material below the euphotic zone. These mechanisms are not necessarily mutually exclusive: while the Zn mechanism may occur in non-iron limited oceanic areas, both could exist in iron limited regions. These mechanisms are also broadly consistent with Elderfield and Rickaby's "fractionation" concept for the global dissolved Cd:PO₄³⁻ relationship (2000). Those workers suggested that a preferential incorporation of Cd relative to P into the particulate organic matter (POM) occurs ((Cd:P)_{POM}/(Cd:P)_{Seawater}= α , ~2.5), admittedly without invoking a specific mechanism. Elderfield and Rickaby further argue that the kinks are actually better described as curves that can be fit by a modified version of the Raleigh isotope fractionation model.

10 The finding that Co:PO₄³⁻ does not show an obvious kink in the vertical profile data from the Ross Sea (Fig. 6a) seems inconsistent with the two mechanisms described above, both of which should result in enhanced Co:P ratios in phytoplankton similar to that of Cd:P. Although the inclusion of the surface transect dCo (Fig. 6b) suggests a plateau of ~20 pM, perhaps due to depletion of labile Co and a residual of complexed cobalt that is less bioavailable (Fig. 6c and d). There are potentially three explanations for this lack of kink observation in the vertical profile dCo datasets. First, perhaps it is an artifact of temporal variability where a Co kink might have occurred during the 1990 expedition, but was not analytically resolvable at the time. We think this scenario is unlikely given the general similarity of Co, Cd, and Zn abundances between these two expeditions. Second, perhaps it is an artifact of comparing a regional Co:PO₄³⁻ relationship to the global Cd:PO₄³⁻ relationship, and that a kink might be observed within a larger Co dataset. We also do not think this is the case: while the Co:PO₄³⁻

Cobalt in the Ross Sea

M. A. Saito et al.

Title Page

Abstract

Introduction

Conclusions

References

Tables

Figures

◀

▶

◀

▶

Back

Close

Full Screen / Esc

Printer-friendly Version

Interactive Discussion



relationship is clearly more variable (Table 1) than Cd:PO_4^{3-} , the Cd:PO_4^{3-} kinks are evident in numerous individual site-specific studies. Third, the most likely explanation is that there is an accumulation of Zn and Cd by phytoplankton in excess of their biochemical requirements (at either optimal growth rate or iron-limited growth rate) near the base of the euphotic zone, while cobalt is too scarce to allow excess uptake, as shown in the previous comparison to culture studies (Fig. 10). This is consistent with the observation that the Ross Sea dissolved Zn:PO_4^{3-} ecological stoichiometry below the nutricline was in great excess of phytoplankton requirements (Fig. 10), and the assumption that the metal requirements for cambialistic enzymes can be considered as the sum of the substitutable metals (Zn+Cd+Co), albeit with varying efficiencies for each metal. By this mechanism, excess uptake beyond growth limiting requirements of Zn (and Cd) by phytoplankton at the base of the euphotic zone and/or near the chlorophyll maximum followed by sinking and remineralization of high Zn:P particulate material out of the euphotic zone would result in eventual surface waters with a lower dissolved Zn:PO_4^{3-} ratio, and resultant lower phytoplankton cellular Zn:P. Because phytoplankton cellular metal quotas are highly plastic relative to P quotas, varying by four orders of magnitude for Zn versus one order or less for P (Droop, 1974; Sunda and Huntsman, 1992; Bertilsson et al., 2003), this mechanism of excess Zn uptake seems a plausible explanation for depleting surface waters in Zn relative to PO_4^{3-} . Evidence for excess Zn uptake in the Ross Sea is shown in Fig. 9c and d, where both dissolved Zn:PO_4^{3-} and Cd:PO_4^{3-} stoichiometries decrease by ~ 30 -fold in the subarctic Pacific and ~ 3 -fold in the Ross Sea towards surface waters. In contrast, dissolved Co:PO_4^{3-} and $\text{NO}_3^-:\text{PO}_4^{3-}$ ratios do not change appreciably throughout the water column, although there is some decrease in Co:PO_4^{3-} ratios in the shallowest samples (Fig. 9a and b). We suggest two interrelated reasons for this: First, the high ratio of dissolved Zn:Co in the Ross Sea described above likely results in high Zn uptake and resultant minor Co uptake and use in the cambialistic enzymes within the phytoplankton community, as observed in laboratory culture studies (Lane and Morel, 2000; Sunda and Huntsman, 1995). Second, as mentioned above, these low dissolved Co:PO_4^{3-}

Cobalt in the Ross Sea

M. A. Saito et al.

[Title Page](#)[Abstract](#)[Introduction](#)[Conclusions](#)[References](#)[Tables](#)[Figures](#)[◀](#)[▶](#)[◀](#)[▶](#)[Back](#)[Close](#)[Full Screen / Esc](#)[Printer-friendly Version](#)[Interactive Discussion](#)

ratios are less than that required for optimal phytoplankton growth without supplementation with Zn (Sunda and Huntsman, 1995). The result of these two factors is a lack of excess Co uptake relative to PO_4^{3-} at the base of the euphotic zone resulting in the relatively uniform dissolved Co: PO_4^{3-} ratio throughout the water column (Fig. 9), and hence no clear Co: PO_4^{3-} kink in the vertical profile data (Fig. 6a).

This excess stoichiometry mechanism for Zn:P and Cd:P kink formation is not mutually exclusive to the Fe-limitation and Zn-depletion mechanisms suggested for Cd:P kink formation described above. Iron limitation was observed in the Ross Sea during both CORSACS cruises (Bertrand et al., 2007, 2010) and the 1990 expedition (Coale et al., 2003), consistent with the iron-induced Cd: PO_4^{3-} growth rate dilution kink formation mechanism. Moreover, we measured Zn speciation in the Ross Sea and found that, in contrast to the North Pacific (Bruland, 1989; Jakuba et al., 2010), Zn-binding ligands were not present in excess of total dissolved Zn (Saito et al., unpublished data, November 2006). This results in higher concentrations of bioavailable Zn in shallow waters and with that a lessened contribution to Cd: PO_4^{3-} kink formation by the Zn mechanism. This speciation effect is also consistent with dissolved Zn: PO_4^{3-} ecological stoichiometries found in the Ross Sea as well as the Southern Ocean (Sunda and Huntsman, 2000) being higher than the subarctic Pacific (Table 2). In addition, the observation of gradually decreasing metal:phosphate ratios higher in the water column (Fig. 9c and d) is more compatible with Elderfield and Rickaby's assertion for a Raleigh-type fractionation model than the simplistic two-slope kink model. Together these observations, in particular our analysis of Co: PO_4^{3-} ratios, suggest that the excess metal:P stoichiometry mechanism may be an important contributor in metal:phosphate kink formation in the oceans.

The proximity of the nutricline to the surface in high nutrient low chlorophyll regions is particularly conducive to both the excess metal uptake and iron-limitation mechanisms for metal:phosphate kink formation. This presents a concern with the premise of an iron-limitation mechanism for Cd-kink formation, in the degree to which the global dissolved Cd:P database biases against shallower depths from the low nutrient low

Cobalt in the Ross Sea

M. A. Saito et al.

Title Page

Abstract

Introduction

Conclusions

References

Tables

Figures

◀

▶

◀

▶

Back

Close

Full Screen / Esc

Printer-friendly Version

Interactive Discussion



chlorophyll regions (LNLC). While nitrate and phosphate accumulate in surface waters in the iron limited regions due to upwelling, they exist at very low concentrations in surface waters of the subtropical gyres (Wu et al., 2000). This feature could prevent the excess metal uptake mechanism from occurring in the subtropical gyres where Cd, Zn, and phosphate are all very low in abundance due to the long vertical diffusion/advection distances prior to entering the euphotic zone. Low abundances may test the uptake capabilities of phytoplankton transporters and prevent excess Cd and Zn uptake (fractionation) relative to phosphate from occurring. This suggests that the excess metal uptake mechanism could provide an alternate mechanism for observations of Cd:P kinks occurring primarily in the iron-limited oceanic regions. However, a profile from coastal waters in the Bering Sea was shown to be consistent with the iron limitation mechanism, where iron and macronutrient replete waters did not show a Cd:PO₄³⁻ kink (Cullen, 2006). It would be useful for future studies to examine the influence of ocean circulation processes on metal:phosphate relationships to differentiate between the contribution of these two mechanisms.

One curiosity related to metal:phosphate kinks is the presence of a convex dissolved Cd:PO₄³⁻ relationship in the subarctic Pacific data of Martin et al. (1989; Fig. 8f). This phenomenon is also evident in the dissolved Cd:PO₄³⁻ ratios that occur between 100–250 m that are *higher* than deep water values (Fig. 9d). We suspect this phenomenon is caused by the trifecta of relatively shallow remineralization of sinking particulate organic matter, a small inventory of dissolved cadmium at that depth, and regional upwelling that resupplies micronutrients to the surface. This mechanism is the same as the “biological concentrating mechanism” that we argued causes small but distinct peaks of dCo in the upper water column (~100 m) within a mesoscale cyclonic eddy, coincident with the depth of significant particulate organic matter remineralization (Noble et al., 2008). The subarctic Pacific Zn:PO₄³⁻ data (Fig. 9c; Martin et al., 1989) is consistent with this line of reasoning, where at the Cd:PO₄³⁻ maximum (150 m), the dissolved Zn:PO₄³⁻ also shows an increase relative to depths above and below it (green

BGD

7, 6387–6439, 2010

Cobalt in the Ross Sea

M. A. Saito et al.

Title Page

Abstract

Introduction

Conclusions

References

Tables

Figures

◀

▶

◀

▶

Back

Close

Full Screen / Esc

Printer-friendly Version

Interactive Discussion



symbols in Fig. 9c, $\sim 120 \mu\text{mol mol}^{-1}$ higher than at 200 m). This Zn:PO_4^{3-} positive excursion is of a similar absolute magnitude ($\sim 100 \mu\text{mol mol}^{-1}$ for both Zn:PO_4^{3-} and Cd:PO_4^{3-}), but a much smaller *relative* magnitude in comparison to the large deepwater inventory of Zn (and P) that effectively masks this process. The strong euphotic zone Zn depletion that occurs (Fig. 9c) likely results in enhanced Cd use as suggested by Sunda and Huntsman (1995). Shallow recycling with continued upwelling could then concentrate Cd:P in both dissolved (Fig. 9d) and particulate phases to create the elevated dissolved Cd:PO_4^{3-} stoichiometry. The lack of such a convex Cd:PO_4^{3-} relationship in the Ross Sea might be related to the lack of a continual upwelling supply source and the higher bioavailability of Zn, which would decrease the drawdown of Cd as observed in Fig. 9d (Zn:PO_4^{3-} and Cd:PO_4^{3-} both reach lower ratios in the subarctic Pacific surface waters than the Ross Sea).

Together these observations are consistent with an emerging picture of high latitude environments that are supplied by upwelled nutrient and metal-rich (Zn, Cd) waters with Zn nutrition being of primary importance relative to Co. The large differences in the deepwater inventories of Zn, Cd, and Co span more than two orders of magnitude, 7580:606:38 relative to PO_4^{3-} respectively in the Ross Sea (Tables 1 and 2; Fig. 9b,c,d). This dynamic range appears to play a major role in influencing both their vertical distributions and their ecological stoichiometries, as described in the sections above. This situation is in contrast to tropical/subtropical regimes, where deeper nutriclines and/or an enhanced supply of cobalt from oxygen minimum zones appear to have much larger impacts on the ecological stoichiometry of Co (Table 1). These results are also consistent with observations that *Chaetoceros calcitrans*, an algal species related to those abundant in sea ice, lacks the ability to substitute Co for Zn (Timmermans et al., 2001), where the significant concentrations of bioavailable Zn would obviate the need for cam-bialistic biochemical substitution of Co for Zn in the austral spring prior to the seasonal depletion of nutrients and micronutrients.

BGD

7, 6387–6439, 2010

Cobalt in the Ross Sea

M. A. Saito et al.

Title Page

Abstract

Introduction

Conclusions

References

Tables

Figures

◀

▶

◀

▶

Back

Close

Full Screen / Esc

Printer-friendly Version

Interactive Discussion



3.5 Lack of cobalt scavenging in the mesopelagic of the Ross Sea

An unusual characteristic of Co geochemistry in the Ross Sea is the apparent lack of removal of dissolved Co from waters below the euphotic zone. This process, generally termed scavenging, can be caused by abiotic particle adsorption or biotic Mn co-oxidation (Lee and Tebo, 1994; Moffett and Ho, 1996; Tebo et al., 1984). As mentioned above, Co, Fe, Mn and Cu, are all considered to be “hybrid-type” elements because their oceanic distributions are thought to be affected by both nutrient-like biological uptake and scavenging removal. A lack of scavenging removal for Co in the Ross Sea is evident in the vertical profiles from the summer and spring cruises (Figs. 3 and 4), which show no appreciable decrease in dissolved Co concentrations with depth, even to a depth of ~800 m (station NX10). Scavenging removal of cobalt is typically observed at mesopelagic depths (Martin et al., 1989; Noble et al., 2008; Saito and Moffett, 2002), as seen for example in Fig. 8c from the subarctic Pacific. The lack of scavenging in the Ross Sea is reflected in the dissolved Co:PO₄³⁻ relationship that is maintained throughout the water column (Fig. 6a). In contrast, scavenging removal is clearly apparent in the subarctic Pacific, where the Co:PO₄³⁻ relationship breaks down below the euphotic zone creating a “cobalt curl” downward in Co versus PO₄³⁻ space, as scavenging removes dissolved Co without stoichiometric removal of PO₄³⁻ as shown in Figs. 8d and 7. We hypothesize that the lessened role of scavenging removal of Co in the Ross Sea is due to a lack of Mn oxidizing activity (and hence lack of co-oxidation of Co), due to the low concentrations of Mn in Southern Ocean waters (Martin et al., 1990; Sedwick et al., 2000). Alternatively (or additionally), the lack of observed scavenging may be related to the Ross Sea’s seasonal winter deep mixing: for scavenging to successfully imprint itself on cobalt distributions here, the process must occur on timescales of less than a year. These observations show that cobalt behaves as a “nutrient-like” element rather than a “hybrid-type” element in the Ross Sea. Further research into the apparent cause of Co scavenging in the Ross Sea may illuminate other oceanic settings where Co may have a solely nutrient-like behavior. For example, if sea-ice extent was greatly

expanded during the last glacial maximum, as suggested by Elderfield and Rickaby (2000), the extent of the oceans where the effects of Co scavenging was absent may also have expanded, potentially increasing regional or oceanic cobalt inventories.

3.6 Cobalt uptake rates

5 Measurements of cobalt uptake from the dissolved phase to the $>2\mu\text{m}$ size fraction particulate phase approached $2.5\text{ pmol L}^{-1}\text{ d}^{-1}$ (Table 3, Fig. 11). Gluteraldehyde-killed control treatments showed little abiotic uptake ($\sim 2\text{--}4\%$, Table 3). The observed biological uptake could be due to assimilation into cellular material and/or biologically-mediated co-oxidation with manganese into oxide minerals (Moffett and Ho, 1996).
10 However, given the apparent lack of scavenging removal of dissolved Co from the mesopelagic zone and low Mn euphotic zone abundances (Sedwick et al., 2000), it seems likely that biological oxide mineral formation was not an important process in the Ross Sea surface waters. As a result, these uptake rate measurements can be interpreted as approximations of the rate of assimilation of dissolved Co by the phyto-
15 plankton community and any particle-associated bacterial communities.

We can use these uptake rates and total dissolved cobalt concentrations to estimate the loss rate of Co with respect to biological uptake, assuming that Co uptake can be approximated by a first order rate law and that the system remains in steady state, these rates fall between 0.16 and 0.001 d^{-1} . This yields residence times with
20 respect to biological uptake on the order of several days in shallow waters to more than a year at depths deeper in the euphotic zone. Figure 11 shows that high Co uptake rates were generally found at depths shallower than 20 m (gray dots, Fig. 11a and b). Since the uptake rate incubations were all conducted at the same irradiance ($\sim 20\%$ surface), it is possible that uptake rates in deeper samples may reflect some photoin-
25 hibition. However, higher biological algal pigment concentrations in the Ross Sea are generally found in shallower depths, (Figs. 4 and 11), hence higher Co uptake rates in near-surface waters are not unexpected. As shown in Fig. 11, higher Co uptake rate was generally correlated with elevated pigment concentrations. There were some

Cobalt in the Ross Sea

M. A. Saito et al.

Title Page

Abstract

Introduction

Conclusions

References

Tables

Figures

◀

▶

◀

▶

Back

Close

Full Screen / Esc

Printer-friendly Version

Interactive Discussion



5 areas where high 19-hexanolyoxyfucoxanthin (19-Hex), a haptophyte indicator pigment that is strongly correlated with *Phaeocystis antarctica* in the Ross Sea (DiTullio et al., 2003), coincided with high Co uptake rates (e.g. Fig. 11c, NX1), but generally, Co uptake rates appeared to correlate most strongly with fucoxanthin concentrations (fuco, a proxy for diatom biomass in the Ross Sea, Fig. 11a). This might suggest that diatoms are responsible for a greater uptake of Co than *Phaeocystis antarctica* and that on balance, Co uptake by diatoms may be more efficient than uptake by *Phaeocystis*. As discussed above, *P. antarctica* and several diatom species have been shown to use Co in place of Zn, although the degree to which Co can replace Zn varies among diatom species (Saito and Goepfert, 2008; Sunda and Huntsman, 1995). However, even those diatoms that do not substitute Co for Zn still actively assimilate dissolved Co (Timmermans et al., 2001). Also, the Co requirements of *P. antarctica* are satisfied at lower concentrations relative to some diatoms (Saito and Goepfert, 2008), supporting the idea that diatoms may be responsible for more cobalt uptake than *P. antarctica*. Due to the interrelated biochemistries of Co and Zn, it is likely that Co uptake rates may also be driven in part by Zn concentrations. Since biological uptake and utilization of Co and Zn are so closely tied, future research on Zn abundances, uptake rates, and the proteins responsible for biological substitution between these micronutrients in polar environments would improve our understanding of cobalt uptake in the Ross Sea.

20 3.7 Potential applications of cobalt as a paleoceanographic proxy

The comparative analysis of Co, Cd, and Zn ecological stoichiometries is useful in understanding their modern biological and geochemical processes. Given the importance of the Cd:PO₄³⁻ relationship for paleoceanographic studies, it seems that significant insight could also be gained by adding Co, similar to the addition of Zn (Marchitto et al., 2000), to foraminiferal Cd/Ca measurements. In particular, the lack of a kink in the Co:PO₄³⁻ relationship could provide an ability to constrain the potential influence of aeolian dust deposition in creating an iron-limitation effect on the Cd:PO₄³⁻ and

BGD

7, 6387–6439, 2010

Cobalt in the Ross Sea

M. A. Saito et al.

Title Page

Abstract

Introduction

Conclusions

References

Tables

Figures

◀

▶

◀

▶

Back

Close

Full Screen / Esc

Printer-friendly Version

Interactive Discussion



Zn:PO₄³⁻ relationship, as well as serve as an alternate P proxy. Finally, foraminiferal studies of Zn, Cd, and Co incorporation into tests may not only have utility as proxies for P, but also valuable proxies for the elements Zn, Cd, and Co themselves, which are of increasing interest for their influence on community composition. Hence, the measurement of this trio of metals in preserved biominerals may provide insight into not only the oceanic phosphate inventory, but also changes in phytoplankton species composition, regional signals of upwelling in oxygen minimum zones (e.g., Co, Saito et al., 2004), and perhaps Southern Ocean sea-ice cover (Co; through effects on scavenging), although further study is needed to constrain these signals in the modern ocean.

4 Conclusions

In this study of Co geochemistry in the Ross Sea, we observed a strong seasonal biological influence and a lack of scavenging removal on vertical structure. Together, these processes served to define the spatial and temporal distributions of cobalt in the category of nutrient-like, in contrast to previous observations of hybrid-type behavior elsewhere in the oceans. Labile Co was measured in significant concentrations throughout the Ross Sea, suggesting a diminished source of Co-binding ligands and a correspondingly high biological availability of dissolved Co relative to other oceanic regions. The linkage between bioactive metals and phytoplankton appears strong in the Ross Sea, and a comparison of the ecological stoichiometries of Zn and Co suggests that Zn is likely influencing diatom diversity. No clear Co:PO₄³⁻ kink was observed in the vertical profile datasets, leading to the hypothesis that observed Zn:PO₄³⁻ and Cd:PO₄³⁻ kinks are caused by the confluence of their much higher inventories compared to Co and the resultant excess metal stoichiometric uptake by phytoplankton. Finally, if the nutrient-like behavior of Co throughout the Ross Sea water column is caused by decreased Co scavenging rather than solely by annual deep mixing, it suggests that there

BGD

7, 6387–6439, 2010

Cobalt in the Ross Sea

M. A. Saito et al.

Title Page

Abstract

Introduction

Conclusions

References

Tables

Figures

◀

▶

◀

▶

Back

Close

Full Screen / Esc

Printer-friendly Version

Interactive Discussion



may have been instances during Earth history where Co scavenging was similarly diminished, for example by expanded sea-ice cover or decreased Mn aeolian deposition, possibly leading to regional increases in Co inventories.

Acknowledgements. We thank the Captain, crew, and marine technicians of the *Nathaniel B. Palmer* for their support during the CORSACS cruises. We also thank the CORSACS science team for helpful discussions and contributions to this program. We are indebted to Bettina Sohst for nutrient analyses, and Maeve Lohan, Angie Milne, Chris Marsay, Anna Aguilar-Islas and Juliette Tria for assistance with sample collection. We thank Ken Bruland and Geoffrey Smith for fabricating the towfish underway sampling system. This research was supported by the US National Science Foundation through research grants (OPP-0440840, OPP-0338097, OPP-0732665, OCE-0452883, OCE-0752991, OCE-0928414).

References

- Arrigo, K. R., Worthen, D., Schnell, A., and Lizotte, M. P.: Primary production in Southern Ocean waters, *J. Geophys. Res.*, 103, 15587–15600, 1998.
- Arrigo, K. R., Robinson, D. H., Worthen, D. L., Dunbar, R. B., DiTullio, G. R., VanWoert, M., and Lizotte, M. P.: Phytoplankton community structure and the drawdown of nutrients and CO₂ in the Southern Ocean, *Science*, 283, 365–367, 1999.
- Bertilsson, S., Berglund, O., Karl, D. M., and Chisholm, S. W.: Elemental composition of marine *Prochlorococcus* and *Synechococcus*: implications for ecological stoichiometry of the sea, *Limnol. Oceanogr.*, 48, 1721–1731, 2003.
- Bertrand, E. M., Saito, M. A., Rose, J. M., Riesselman, C. R., Lohan, M. C., Noble, A. E., Lee, P. A., and DiTullio, G. R.: Vitamin B₁₂ and iron co-limitation of phytoplankton growth in the Ross Sea, *Limnol. Oceanogr.*, 52, 1079–1093, 2007.
- Bertrand, E. M., Saito, M. A., Jeon, Y. J., and Neilan, B. A.: Vitamin B₁₂ biosynthesis gene diversity in the Ross Sea: the identification of a new group of polar B₁₂-biosynthesizers, *Environ. Microbiol.*, submitted, 2010.
- Boyle, E. A., Sclater, F. R., and Edmond, J. M.: On the marine geochemistry of cadmium, *Nature*, 263, 42–44, 1976.

BGD

7, 6387–6439, 2010

Cobalt in the Ross Sea

M. A. Saito et al.

Title Page

Abstract

Introduction

Conclusions

References

Tables

Figures

◀

▶

◀

▶

Back

Close

Full Screen / Esc

Printer-friendly Version

Interactive Discussion



**Cobalt in the Ross
Sea**

M. A. Saito et al.

[Title Page](#)[Abstract](#)[Introduction](#)[Conclusions](#)[References](#)[Tables](#)[Figures](#)[◀](#)[▶](#)[◀](#)[▶](#)[Back](#)[Close](#)[Full Screen / Esc](#)[Printer-friendly Version](#)[Interactive Discussion](#)

- Boyle, E., Husted, S., and Jones, S.: On the distribution of copper, nickel, and cadmium in the surface waters of the North Atlantic and North Pacific Ocean, *J. Geophys. Res.*, 86, 8048–8066, 1981.
- Boyle, E. A.: Cd: chemical tracer of deep-water paleoceanography, *Paleoceanography*, 3, 471–489, 1988.
- Bruland, K. W.: Oceanographic distributions of cadmium, zinc, nickel and copper in the North Pacific, *Earth Planet. Sci. Lett.*, 47, 176–198, 1980.
- Bruland, K. W.: Complexation of zinc by natural organic ligands in the Central North Pacific, *Limnol. Oceanogr.*, 34, 269–285, 1989.
- Bruland, K. W. and Lohan, M. C.: Controls of trace metals in seawater, in: *Treatise on Geochemistry*, edited by: Holland, H. D. and Turekian, K. K., Elsevier Science Ltd, Cambridge, 2003.
- Bruland, K. W.: GEOTRACES Co Intercalibration Results, available at: <http://www.geotraces.org/documents/SAFeReferenceSample-Co.pdf>, (last access: August 2010), 2010.
- Bruland, K. W., Rue, E. L., Smith, G. J., and DiTullio, G. R.: Iron, macronutrients and diatom blooms in the Peru Upwelling regime: brown and blue waters of Peru, *Mar. Chem.*, 93, 81–103 2005.
- Campbell, L., Nolla, H. A., and Vault, D.: The importance of *Prochlorococcus* to community structure in the central North Pacific Ocean, *Limnol. Oceanogr.*, 39, 954–961, 1994.
- Caron, D. A., Dennett, M. A., Lonsdale, D. J., Moran, D. M., and Shalapyonok, L.: Microzooplankton herbivory in the Ross Sea, Antarctica, *Deep Sea Res. Pt. II*, 47, 3249–3272, 2000.
- Coale, K. H., Wang, X., Tanner, S. J., and Johnson, K. S.: Phytoplankton growth and biological response to iron and zinc addition in the Ross Sea and Antarctic Circumpolar Current along 170° W, *Deep-Sea Res. Pt. II*, 50, 635–653, 2003.
- Coale, K. H., Michael Gordon, R., and Wang, X.: The distribution and behavior of dissolved and particulate iron and zinc in the Ross Sea and Antarctic Circumpolar Current along 170° W, *Deep Sea Res. Pt. I*, 52, 295–318, 2005.
- Cochlan, W. P., Bronk, D. A., and Coale, K. H.: Trace metals and nitrogenous nutrition of Antarctic phytoplankton: experimental observations in the Ross Sea, *Deep Sea Res. Pt. II*, 49, 3365–3390, 2002.
- Croft, M. T., Lawrence, A. D., Raux-Deery, E., Warren, M. J., and Smith, A. G.: Algae require vitamin B₁₂ through a symbiotic relationship with bacteria, *Nature*, 438, 90–93, 2005.

**Cobalt in the Ross
Sea**

M. A. Saito et al.

Title Page

Abstract

Introduction

Conclusions

References

Tables

Figures

◀

▶

◀

▶

Back

Close

Full Screen / Esc

Printer-friendly Version

Interactive Discussion



- Cullen, J. T., Chase, Z., Coale, K. H., Fitzwater, S. E., and Sherrell, R. M.: Effect of iron limitation on the cadmium to phosphorus ratio of natural phytoplankton assemblages from the Southern Ocean, *Limnol. Oceanogr.*, 48, 1079–1087, 2003.
- Cullen, J. T. and Sherrell, R. M.: Effects of dissolved carbon dioxide, zinc, and manganese on the cadmium to phosphorus ratio in natural phytoplankton assemblages, *Limnol. Oceanogr.*, 50, 1193–1204, 2005.
- Cullen, J. T.: On the nonlinear relationship between dissolved cadmium and phosphate in the modern global ocean: could chronic iron limitation of phytoplankton growth cause the kink?, *Limnol. Oceanogr.*, 51, 1369–1380, 2006.
- de Baar, H. J. W.: von Liebig's law of the minimum and plankton ecology (1899–1991), *Prog. Oceanogr.*, 33, 347–386, 1994.
- de Baar, H. J. W., Saager, P. M., Nolting, R. F., and van der Meer, J.: Cadmium versus phosphate in the world ocean, *Mar. Chem.*, 46, 261–281, 1994.
- DiTullio, G., Grebmeier, J. M., Arrigo, K. R., Lizotte, M. P., Robinson, D. H., A. Leventer, Barry, J. P., VanWoert, M. L., and Dunbar, R. B.: Rapid and early export of *Phaeocystis antarctica* blooms in the Ross Sea, Antarctica, *Nature*, 404, 595–598, 2000.
- DiTullio, G. R. and Smith Jr., W. O.: Spatial patterns in phytoplankton biomass and pigment distributions in the Ross Sea, *J. Geophys. Res.*, 101, 18467–18477, 1996.
- DiTullio, G. R. and Geesey, M. E.: Photosynthetic pigments in marine algae and bacteria, in: *The Encyclopedia of Environmental Microbiology*, edited by: Bitton, G., John Wiley & Sons, Inc., New York, NY, 2453–2470, 2002.
- DiTullio, G. R., Geesey, M. E., Jones, D. R., Daly, K. L., Campbell, L., and Smith Jr., W. O.: Phytoplankton assemblage structure and primary productivity along 170°W in the South Pacific Ocean, *Mar. Ecol.-Prog. Ser.*, 255, 55–80, 2003.
- Droop, M. R.: The nutrient status of algal cells in continuous culture, *J. Mar. Biol. Assoc. UK*, 54, 825–855, 1974.
- Droop, M. R.: Vitamins, phytoplankton and bacteria: symbiosis or scavenging?, *J. Phycol.*, 29, 107–113, 2007.
- Ducklow, H., Carlson, C., Church, M., Kirchman, D., Smith, D., and Steward, G.: The seasonal development of the bacterioplankton bloom in the Ross Sea, Antarctica, 1994–1997, *Deep Sea Res. Pt. II*, 48, 4199–4221, 2001.
- Elderfield, H. and Rickaby, R. E. M.: Oceanic Cd/P ratio and nutrient utilization in the glacial Southern Ocean, *Nature*, 405, 305–310, 2000.

**Cobalt in the Ross
Sea**

M. A. Saito et al.

[Title Page](#)[Abstract](#)[Introduction](#)[Conclusions](#)[References](#)[Tables](#)[Figures](#)[◀](#)[▶](#)[◀](#)[▶](#)[Back](#)[Close](#)[Full Screen / Esc](#)[Printer-friendly Version](#)[Interactive Discussion](#)

- Ellwood, M. J. and Hunter, K. A.: The incorporation of zinc and iron into the frustule of the marine diatom *Thalassiosira pseudonana*, *Limnol. Oceanogr.*, 45, 1517–1524, 2000.
- Ellwood, M. J. and van den Berg, C. M. G.: Determination of organic complexation of cobalt in seawater by cathodic stripping voltammetry, *Mar. Chem.*, 75, 33–47, 2001.
- 5 Ellwood, M. J., v. d. Berg, C. M. G., Boye, M., Veldhuis, M., d. Jong, J. T. M., d. Baar, H. J. W., Croot, P. L., and Kattner, G.: Organic complexation of cobalt across the Antarctica polar front in the Southern Ocean, *Mar. Freshwater Res.*, 56, 1069–1075, 2005.
- Fitzwater, S. E., Johnson, K. S., Gordon, R. M., Coale, K. H., and Smith, W. O.: Trace metal concentrations in the Ross Sea and their relationship with nutrients and phytoplankton growth, *Deep-Sea Res. Pt. II*, 47, 3159–3179, 2000.
- 10 Frew, R. D. and Hunter, K. A.: Influence of Southern Ocean waters on the cadmium-phosphate properties of the global ocean, *Nature*, 360, 144–146, 1992.
- Frew, R. D. and Hunter, K. A.: Cadmium-phosphorus cycling at the subtropical convergence south of New Zealand, *Mar. Chem.*, 51, 223–237, 1995.
- 15 Giovannoni, S. J., Tripp, J., Givan, S., Podar, M., Vergin, K. L., Baptista, D., Bibbs, L., Eads, J., Richardson, T. H., Noordewier, M., Rappé, M. S., Short, J. M., Carrington, J. C., and Mathur, E. J.: Genome streamlining in a cosmopolitan oceanic bacterium, *Science*, 309, 1242–1245, 2005.
- Gobler, C., Norman, C., Panzeca, C., Taylor, G., and Sanudo-Wilhelmy, S.: Effect of B-vitamins (B₁, B₁₂) and inorganic nutrients on algal bloom dynamics in a coastal ecosystem, *Aquat. Microb. Ecol.*, 49, 181–194, 2007.
- 20 Gordon, G. T. and Sullivan, C. W.: Vitamin B₁₂ and cobalt cycling among diatoms and bacteria in Antarctica sea ice microbial communities, *Limnol. Oceanogr.*, 53, 1862–1877, 2008.
- Gordon, L. I., Jennings Jr., J. C., Ross, A. A., and Crest, J. M.: A Suggested Protocol for Continuous Flow Automated Analysis of Seawater Nutrients (Phosphate, Nitrate, Nitrite and Silicic Acid) in the WOCE Hydrographic Program and the Joint Global Ocean Fluxes Study, 1993.
- 25 Gordon, L. I., Codispoti, L. A., Jennings, J. C., Millero, F. J., Morrison, J. M., and Sweeney, C.: Seasonal evolution of hydrographic properties in the Ross Sea, Antarctica, 1996–1997, *Deep Sea Res. Pt. II*, 47, 3095–3117, 2000.
- 30 Heggie, D. and Lewis, T.: Cobalt in pore waters of marine sediments, *Nature*, 311, 453–455, 1984.

Cobalt in the Ross Sea

M. A. Saito et al.

Title Page

Abstract

Introduction

Conclusions

References

Tables

Figures

◀

▶

◀

▶

Back

Close

Full Screen / Esc

Printer-friendly Version

Interactive Discussion



Hendry, K. R., Rickaby, R. E. M., Hoog, J. C. M. d., Weston, K., and Rehkemper, M.: The cadmium-phosphate relationship in brine: biological versus physical control over micronutrients in sea ice environments, *Antarct. Sci.*, 22, 11–18, 2009.

Jakuba, R. W., Saito, M. A., Moffett, J. W., Bidigare, B., and Xu, Y.: Dissolved zinc in the North Pacific: distribution, speciation, and importance to primary producers, in preparation, 2010.

Lane, T. W. and Morel, F. M. M.: Regulation of carbonic anhydrase expression by zinc, cobalt, and carbon dioxide in the marine diatom *Thalassiosira weissflogii*, *Plant Physiol.*, 123, 1–8, 2000.

Lane, T. W., Saito, M. A., George, G. N., Pickering, I. J., Prince, R. C., and Morel, F. M. M.: A cadmium enzyme from a marine diatom, *Nature*, 435, p. 42, 2005.

Lane, E. S., Jang, K., Cullen, J. T., and Maldonado, M. T.: The interaction between inorganic iron and cadmium uptake in the marine diatom *Thalassiosira oceanica*, *Limnol. Oceanogr.*, 53, 1784–1789, 2008.

Lane, E. S., Semeniuk, D. M., Strzepek, R. F., Cullen, J. T., and Maldonado, M. T.: Effects of iron limitation on intracellular cadmium of cultured phytoplankton: implications for surface dissolved cadmium to phosphate ratios, *Mar. Chem.*, 115, 155–162, 2009.

Lee, Y. and Tebo, B.: Cobalt(II) oxidation by the marine manganese(II)-oxidizing *Bacillus* sp. strain SG-1, *Appl. Environ. Microb.*, 60, 2949–2957, 1994.

Marchitto, T. M., Curry, W. B., and Oppo, D. W.: Zinc concentrations in benthic foraminifera reflect seawater chemistry, *Paleoceanography*, 15, 299–306, 2000.

Martin, J. H., Gordon, R. M., Fitzwater, S., and Broenkow, W. W.: VERTEX: phytoplankton/iron studies in the Gulf of Alaska, *Deep-Sea Res.*, 36, 649–680, 1989.

Martin, J. H., Fitzwater, S. E., and Gordon, R. M.: Iron deficiency limits phytoplankton growth in Antarctic Waters, *Global Biogeochem. Cy.*, 4, 5–12, 1990.

McMinn, A., Skerratt, J., Trull, T., Ashworth, C., and Lizotte, M.: Nutrient stress gradient in the bottom 5 cm of fast ice, McMurdo Sound, Antarctica, *Polar Biol.*, 21, 220–227, 1999.

Moffett, J. W. and Ho, J.: Oxidation of cobalt and manganese in seawater via a common microbially catalyzed pathway, *Geochim. Cosmochim. Ac.*, 60, 3415–3424, 1996.

Morel, F. M. M., Reinfelder, J. R., Roberts, S. B., Chamberlain, C. P., Lee, J. G., and Yee, D.: Zinc and carbon co-limitation of marine phytoplankton, *Nature*, 369, 740–742, 1994.

Noble, A. E., Saito, M. A., Maiti, K., and Benitez-Nelson, C.: Cobalt, manganese, and iron near the Hawaiian Islands: a potential concentrating mechanism for cobalt within a cyclonic eddy and implications for the hybrid-type trace metals, *Deep Sea Res. Pt. II*, 55, 1473–1490,

2008.

Noble, A. E., Saito, M. A., Goepfert, T. J., Lamborg, C.H.: Iron, cobalt, and manganese biogeochemical processes in a full-depth zonal ocean section of the South Atlantic, in preparation, 2010.

5 Nozaki, Y.: A Fresh Look at Element Distribution in the North Pacific, EOS, available at: <http://www.agu.org/pubs/eos-news/supplements/1995-2003/97025e.shtml> (last access: 18 August 2010), 1997.

Panzeca, C., Tovar-Sanchez, A., Agusti, S., Reche, I., Duarte, C. M., Taylor, G. T., and Sanudo-Wilhelmy, S. A.: B vitamins as regulators of phytoplankton dynamics, EOS, 87, 593, 2006.

10 Roberts, S., Lane, T., and Morel, F. M. M.: Carbonic anhydrase in the marine diatom *Thalassiosira weissflogii* (Bacillariophyceae), J. Phycol., 33, 845–850, 1997.

Rodionov, D. A., Vitreschak, A. G., Mironov, A. A., and Gelfand, M. S.: Comparative genomics of the vitamin B₁₂ metabolism and regulation in prokaryotes, J. Biol. Chem., 278, 41148–41159, 2003.

15 Saager, P. M. and de Baar, H. J. W.: Limitations to the quantitative application of Cd as a paleoceanographic tracer, based on results of a multi-box model and statistical considerations, Global Planet. Change, 8, 69–92, 1993.

Saito, M. A. and Moffett, J. W.: Complexation of cobalt by natural organic ligands in the Sargasso Sea as determined by a new high-sensitivity electrochemical cobalt speciation method suitable for open ocean work, Mar. Chem., 75, 49–68, 2001.

20 Saito, M. A. and Moffett, J. W.: Temporal and spatial variability of cobalt in the Atlantic Ocean, Geochim. Cosmochim. Ac., 66, 1943–1953, 2002.

Saito, M. A., Moffett, J. W., Chisholm, S. W., and Waterbury, J. B.: Cobalt limitation and uptake in *Prochlorococcus*, Limnol. Oceanogr., 47, 1629–1636, 2002.

25 Saito, M. A., Moffett, J. W., and DiTullio, G.: Cobalt and nickel in the Peru Upwelling Region: a major flux of cobalt utilized as a micronutrient, Global Biogeochem. Cy., 18, GB4030, 14 pp., doi:10.1029/2003GB002216, 2004.

Saito, M. A., Rocap, G., and Moffett, J. W.: Production of cobalt binding ligands in a *Synechococcus* feature at the Costa Rica Upwelling Dome, Limnol. Oceanogr., 50, 279–290, 2005.

30 Saito, M. A. and Schneider, D. L.: Examination of precipitation chemistry and improvements in precision using the Mg(OH)₂ preconcentration ICP-MS method for high-throughput analysis of open-ocean Fe and Mn in seawater, Anal. Chim. Acta, 565, 222–233, 2006.

BGD

7, 6387–6439, 2010

Cobalt in the Ross Sea

M. A. Saito et al.

Title Page

Abstract

Introduction

Conclusions

References

Tables

Figures

◀

▶

◀

▶

Back

Close

Full Screen / Esc

Printer-friendly Version

Interactive Discussion



- Saito, M. A. and Goepfert, T. J.: Zinc-cobalt colimitation in *Phaeocystis antarctica*, *Limnol. Oceanogr.*, 53, 266–275, 2008.
- Saito, M. A., Goepfert, T. J., and Ritt, J. T.: Some thoughts on the concept of colimitation: three definitions and the importance of bioavailability, *Limnol. Oceanogr.*, 53, 276–290, 2008.
- 5 Sañudo-Wilhelmy, S. A., Gobler, C. J., Okbamichael, M., and Taylor, G. T.: Regulation of phytoplankton dynamics by vitamin B₁₂, *Geophys. Res. Lett.*, 33, L04604, doi:10.1029/2005GL025046, 2006.
- Sedwick, P. N. and DiTullio, G. R.: Regulation of algal blooms in Antarctic Shelf Waters by the release of iron from melting sea ice, *Geophys. Res. Lett.*, 24, 2515–2518, doi:10.1029/97gl02596, 1997.
- 10 Sedwick, P. N., DiTullio, G. R., and Mackey, D. J.: Iron and manganese in the Ross Sea, Antarctica: seasonal iron limitation in Antarctic shelf waters, *J. Geophys. Res.*, 105, 11321–11336, 2000.
- Sedwick, P. N., Sholkovitz, E. R., and Church, T. M.: Impact of anthropogenic combustion emissions on the fractional solubility of aerosol iron: evidence from the Sargasso Sea, *Geochim. Geophys. Geos.*, 8, Q10Q06, doi:10.1029/2007GC001586, 2007.
- 15 Sedwick, P. N., Marsay, C. M., Aguilar-Islas, A. M., Lohan, M. C., Sohst, B. M., Long, M. C., Arrigo, K. R., Bruland, K. W., DiTullio, G. R., Dunbar, R. B., Saito, M. A., and Smith, W. O.: Early-season iron depletion in the Ross Sea polynya: Implications for iron dynamics on the Antarctic continental shelf, *J. Geophys. Res. Oceans*, submitted, 2010.
- 20 Smith, J. W. O., Shields, A. R., Peloquin, J. A., Catalano, G., Tozzi, S., Dinniman, M. S., and Asper, V. A.: Interannual variations in nutrients, net community production, and biogeochemical cycles in the Ross Sea, *Deep Sea Res. Pt. II*, 53, 815–833, 2006.
- Sterner, R. W. and Elser, J. J.: *Ecological Stoichiometry: The Biology of Elements from Molecules to the Biosphere*, Princeton University Press, Princeton, NJ, 439 pp., 2002.
- 25 Sunda, W. and Huntsman, S. A.: Feedback interactions between zinc and phytoplankton in seawater, *Limnol. Oceanogr.*, 37, 25–40, 1992.
- Sunda, W. G. and Huntsman, S. A.: Cobalt and zinc interreplacement in marine phytoplankton: biological and geochemical implications, *Limnol. Oceanogr.*, 40, 1404–1417, 1995.
- 30 Sunda, W. G. and Huntsman, S. A.: Effect of Zn, Mn, and Fe on Cd accumulation in phytoplankton: implications for oceanic Cd cycling, *Limnol. Oceanogr.*, 45, 1501–1516, 2000.
- Taylor, S. R. and McLennan, S. M.: The continental crust: its composition and evolution, in: *Geoscience Texts*, edited by: Hallam, A., Blackwell Scientific Publications, Boston, 1985.

Cobalt in the Ross Sea

M. A. Saito et al.

[Title Page](#)[Abstract](#)[Introduction](#)[Conclusions](#)[References](#)[Tables](#)[Figures](#)[◀](#)[▶](#)[◀](#)[▶](#)[Back](#)[Close](#)[Full Screen / Esc](#)[Printer-friendly Version](#)[Interactive Discussion](#)

Tebo, B., Nealson, K., Emerson, S., and Jacobs, L.: Microbial mediation of Mn(II) and Co(II) precipitation at the O₂/H₂ interfaces in two anoxic fjords, *Limnol. Oceanogr.*, 29, 1247–1258, 1984.

Thuróczy, C.-E., Boye, M., and Losno, R.: Dissolution of cobalt and zinc from natural and anthropogenic dusts in seawater, *Biogeosciences*, 7, 1927–1936, doi:10.5194/bg-7-1927-2010, 2010.

Timmermans, K. R., Snoek, J., Gerringa, L. J. A., Zondervan, I., and d. Baar, H. J. W.: Not all eucaryotic algae can replace zinc with cobalt: *Chaetoceros calcitrans* (*Bacillariophyceae*) versus *Emiliana huxleyi* (*Prymnesiophyceae*), *Limnol. Oceanogr.*, 46, 699–703, 2001.

Wong, G., Pai, S., and Chung, S.: Cobalt in the Western Philippine Sea, *Oceanol. Acta*, 18, 631–638, 1995.

Wu, J., Sunda, W., Boyle, E. A., and Karl, D. M.: Phosphate depletion in the Western North Atlantic Ocean, *Science*, 289, 752–762, 2000.

Zapata, M., Rodriguez, F., and Garrido, J. L.: Separation of chlorophylls and carotenoids from marine phytoplankton: a new HPLC method using a reversed phase C₈ column and pyridine-containing mobile phases, *Mar. Ecol.-Prog. Ser.*, 195, 29–45, 2000.

BGD

7, 6387–6439, 2010

Cobalt in the Ross Sea

M. A. Saito et al.

Title Page

Abstract

Introduction

Conclusions

References

Tables

Figures

◀

▶

◀

▶

Back

Close

Full Screen / Esc

Printer-friendly Version

Interactive Discussion



Cobalt in the Ross Sea

M. A. Saito et al.

Discussion Paper | Discussion Paper | Discussion Paper | Discussion Paper | Discussion Paper

Title Page

Abstract Introduction

Conclusions References

Tables Figures

I◀ ▶I

◀ ▶

Back Close

Full Screen / Esc

Printer-friendly Version

Interactive Discussion

Table 2. Relationship between cadmium and zinc versus phosphate in the Ross Sea*.

Geographic Location	Depth range (m)	$\Delta M:\Delta P$ $\mu\text{mol mol}^{-1}$	r^2
Ross Sea ($\text{PO}_4^{3-} < 1 \mu\text{M}$)**	0.5–40	178 (Cadmium)	0.79
Ross Sea ($\text{PO}_4^{3-} > 1 \mu\text{M}$)**	15–375	606 (Cadmium)	0.91
Ross Sea ($\text{PO}_4^{3-} < 1.5 \mu\text{M}$)**	0.5–40	509 (Zinc)	0.95
Ross Sea ($\text{PO}_4^{3-} > 1.5 \mu\text{M}$)**	20–375	7580 (Zinc)	0.72
Subarctic Pacific*** ($\text{PO}_4^{3-} < 1.2 \mu\text{M}$)	20–150	450 (Cadmium)	0.87
Subarctic Pacific*** ($\text{PO}_4^{3-} > 1.2 \mu\text{M}$)	>150	280 (Cadmium)	0.93
Subarctic Pacific*** ($\text{PO}_4^{3-} < 1.2 \mu\text{M}$)	20–150	251 (Zinc)	0.77
Subarctic Pacific*** ($\text{PO}_4^{3-} > 1.2 \mu\text{M}$)	>150	4620 (Zinc)	0.86

* Relationships shown in Fig. 8.

** Data from Fitzwater et al. (2000).

*** Data from Martin et al. (1989); inclusive of T5, T6, T8; based on Sunda and Huntsman (1995).



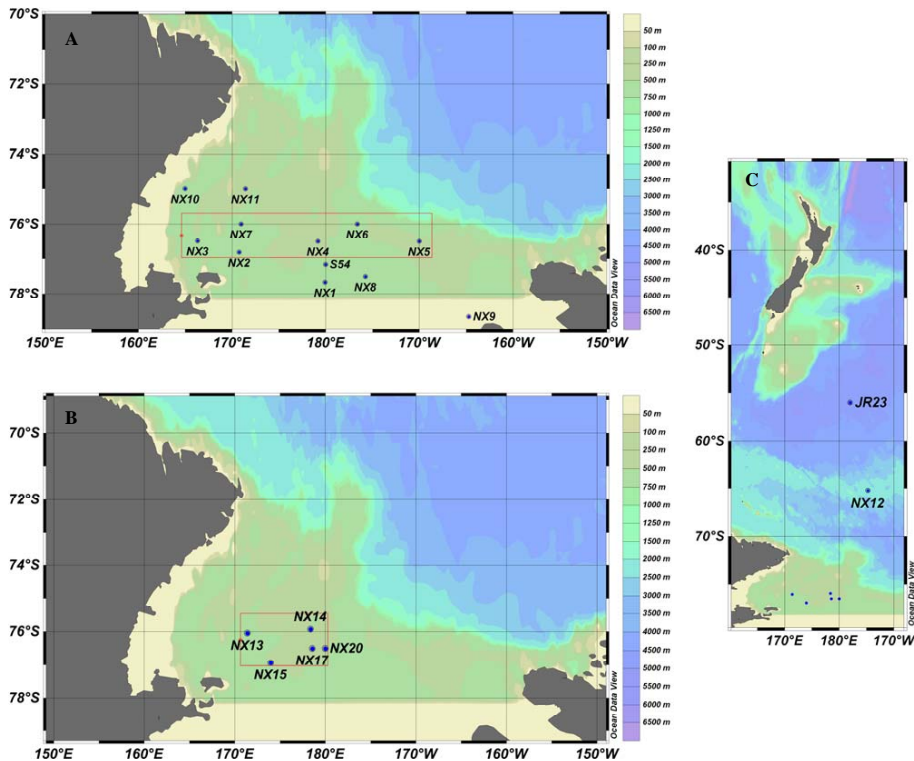


Fig. 1. Geographic locations of trace metal sampling sites in the Ross Sea of Antarctica and the Southern Ocean. **(A)** Locations of CORSACS-1 stations NX1-11 sampled during the austral summer (27 December 2005–22 January 2006). **(B)** Locations of CORSACS-2 stations NX13-20 sampled in the spring-early summer (16 November 2006–3 December 2006). **(C)** Locations of stations NX12 and JR23 in the Southern Ocean during CORSACS-2. The polynya was smaller during CORSACS-2 as shown by the smaller sampling area compared to CORSACS-1. Station NX9 was in the Bay of Whales area, the southernmost point reached by any ship at the time. Areas enclosed in the red boxes are presented as vertical sections in Fig. 4.

Cobalt in the Ross Sea

M. A. Saito et al.

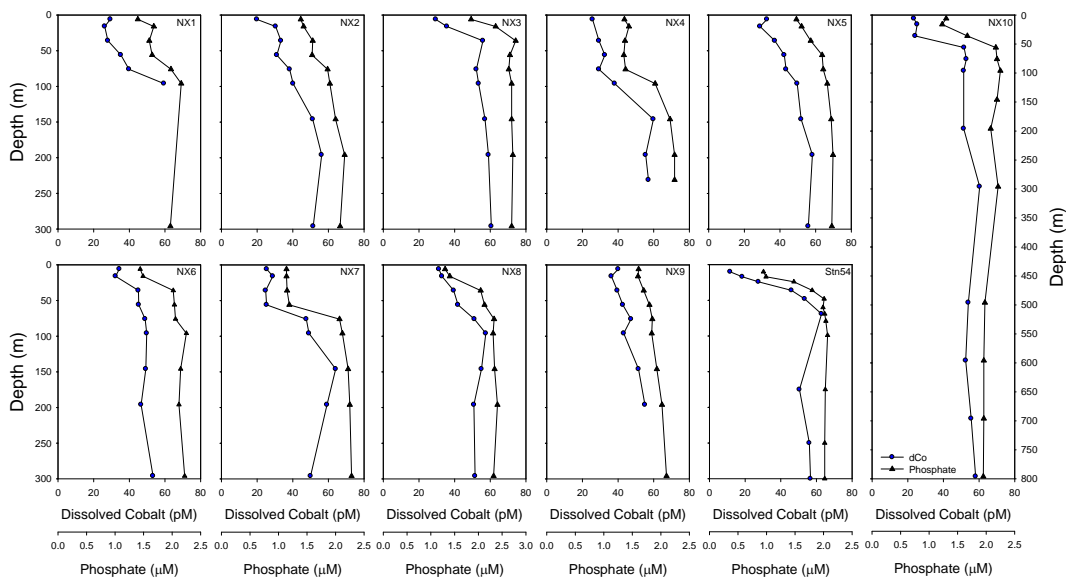


Fig. 2. Vertical profiles of total dissolved cobalt (dCo, circles) and soluble reactive phosphate (triangles) from austral summer in the Ross Sea (CORSACS-1). Note the similarity in vertical structure for both nutrients throughout the water column.

Title Page

Abstract Introduction

Conclusions References

Tables Figures

◀ ▶

◀ ▶

Back Close

Full Screen / Esc

Printer-friendly Version

Interactive Discussion



Cobalt in the Ross Sea

M. A. Saito et al.

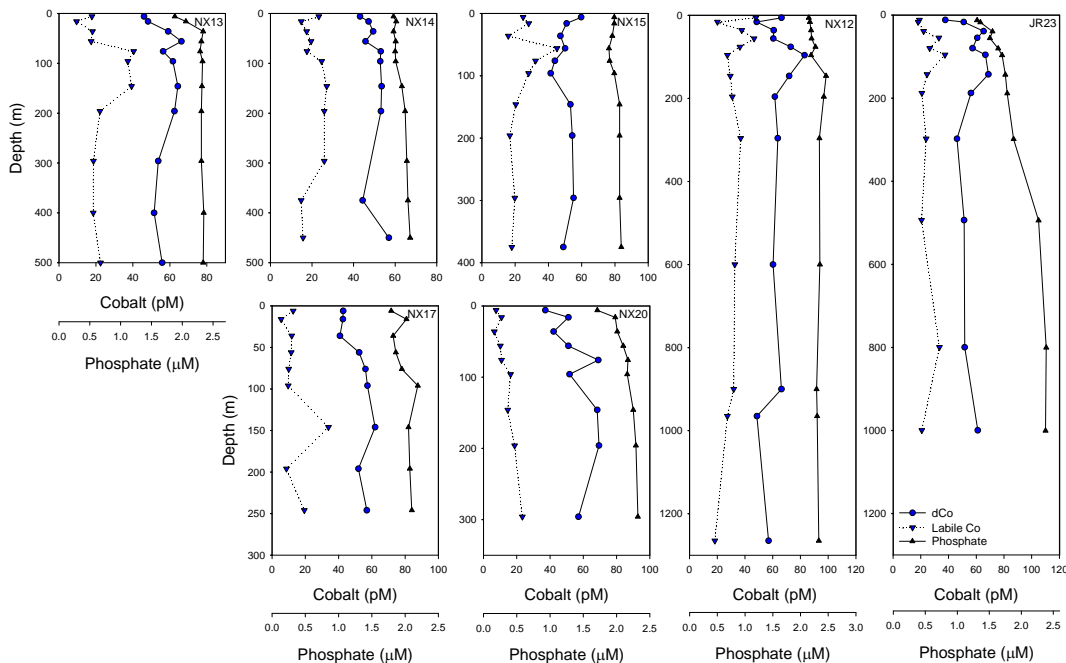


Fig. 3. Vertical profiles of total dissolved cobalt (dCo, circles), labile cobalt (downward triangles, dashed line) and soluble reactive phosphate (upward triangles, solid line) from late spring/early summer in the Ross Sea (CORSACS-2). The abundance of both nutrients is higher than in late summer. Southern Ocean stations NX12 and JR23 showed the effects of scavenging of cobalt below the euphotic zone.

Title Page

Abstract

Introduction

Conclusions

References

Tables

Figures

◀

▶

◀

▶

Back

Close

Full Screen / Esc

Printer-friendly Version

Interactive Discussion



Cobalt in the Ross Sea

M. A. Saito et al.

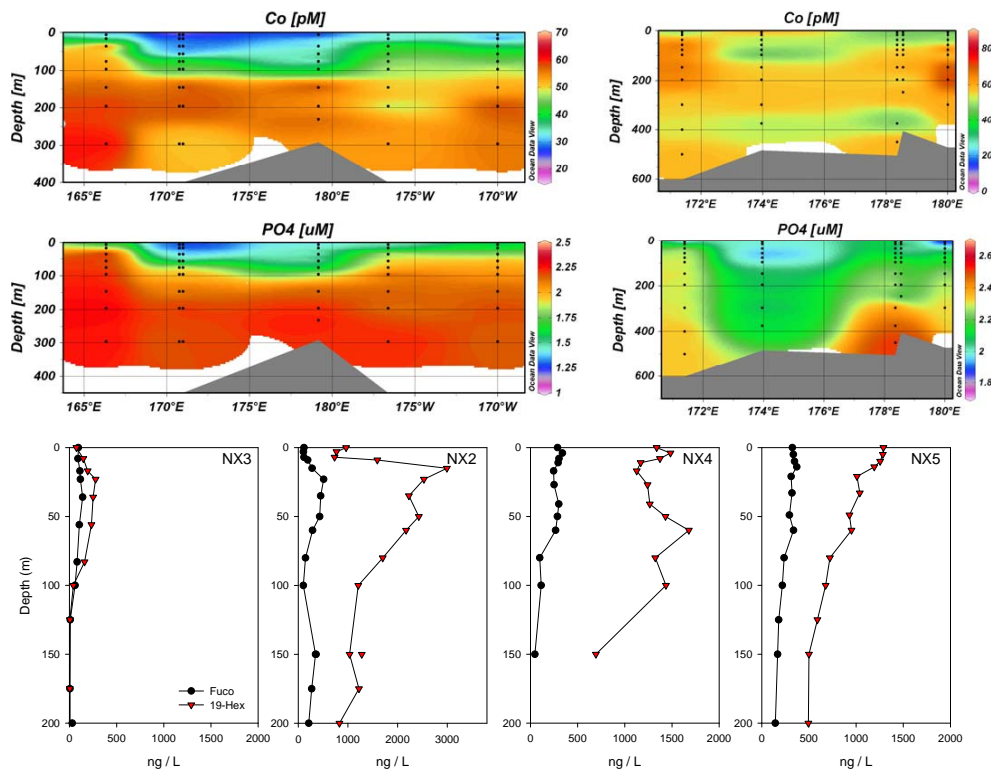


Fig. 4. Zonal sections of total dissolved cobalt and phosphate during summer (CORSACS-1; top left panel) and spring/early summer (CORSACS-2; top right panels). Stations enclosed within the red line in Fig. 1a and b are included in the zonal sections. Late summer shows the cumulative effects of cobalt and phosphate removal by phytoplankton uptake export. Representative vertical phytoplankton pigment distributions during the summer CORSACS-1 cruise across the section showed large haptophytes populations (19-Hexanolyxofucoxanthin, primarily *Phaeocystis antarctica*) and smaller diatom populations (Fucoxanthin) within the center of the region of nutrient drawdown.

Title Page

Abstract

Introduction

Conclusions

References

Tables

Figures

◀

▶

◀

▶

Back

Close

Full Screen / Esc

Printer-friendly Version

Interactive Discussion



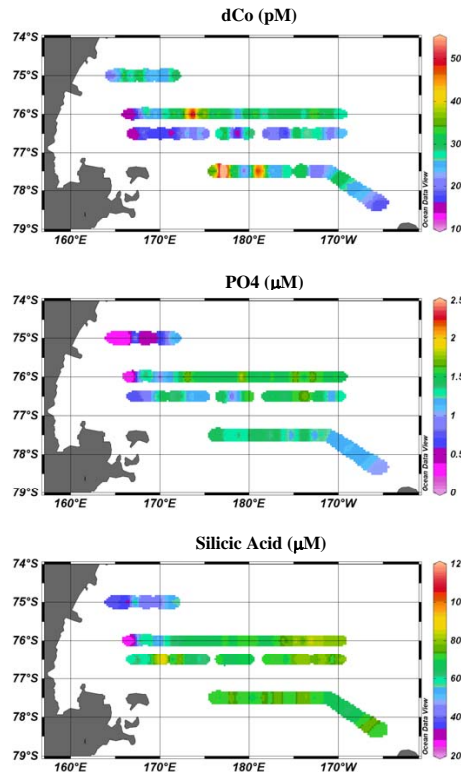


Fig. 5. Surface transects for total dissolved Co (dCo, top), soluble reactive phosphate (middle) and silicic acid (bottom) from CORSACS-1 1–22 January 2006. Total dissolved cobalt showed a general similarity to macronutrients throughout the transect. The very western edge of the transect was near the ice edge and showed a decrease in salinity, nutrients, and cobalt, particularly along 76° S and 76.5° S. The western portion of the transects also had high primary productivity, particularly along the western edge of the 75° S transect near Terra Nova Bay.

Cobalt in the Ross Sea

M. A. Saito et al.

Title Page

Abstract Introduction

Conclusions References

Tables Figures

◀ ▶

◀ ▶

Back Close

Full Screen / Esc

Printer-friendly Version

Interactive Discussion



Cobalt in the Ross Sea

M. A. Saito et al.

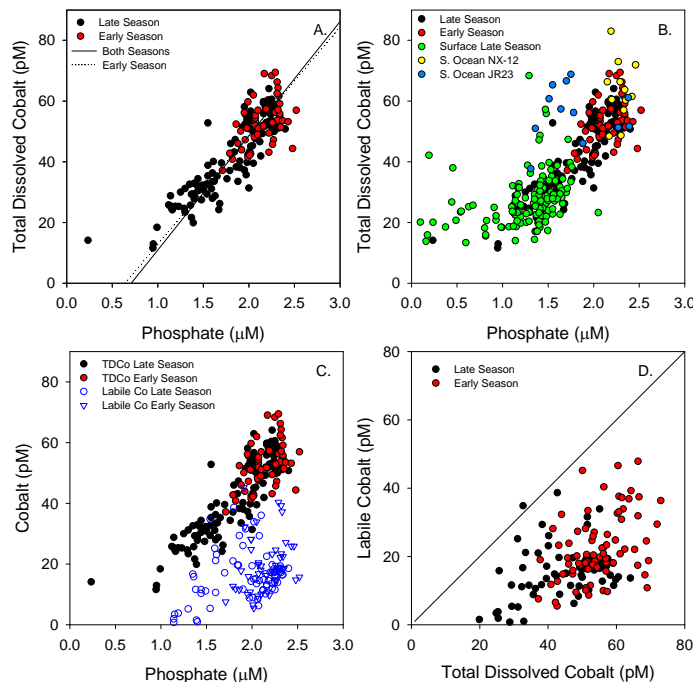


Fig. 6. (A) Total dissolved cobalt and phosphate were correlated throughout the water column of the Ross Sea. Both were noticeably higher in the early summer than late summer, indicative of phytoplankton utilization and export. Linear regressions are shown for vertical profile datasets of both seasons (solid) and only CORSACS-1 (dashed). (B) Surface transects in the late summer also showed a relationship between Co and phosphate, overlapping with and extending lower than the summer profile samples. Southern Ocean profiles NX12 and particularly JR23 showed less coherence with phosphate. (C) Labile cobalt from both spring and summer showed significant amounts of cobalt present as labile cobalt in the water column. (D) Labile cobalt from vertical profiles of CORSACS-1 and 2 versus total dissolved cobalt, with 1:1 line shown, shows how dCo is not saturated by cobalt binding ligands.

Title Page

Abstract

Introduction

Conclusions

References

Tables

Figures

◀

▶

◀

▶

Back

Close

Full Screen / Esc

Printer-friendly Version

Interactive Discussion



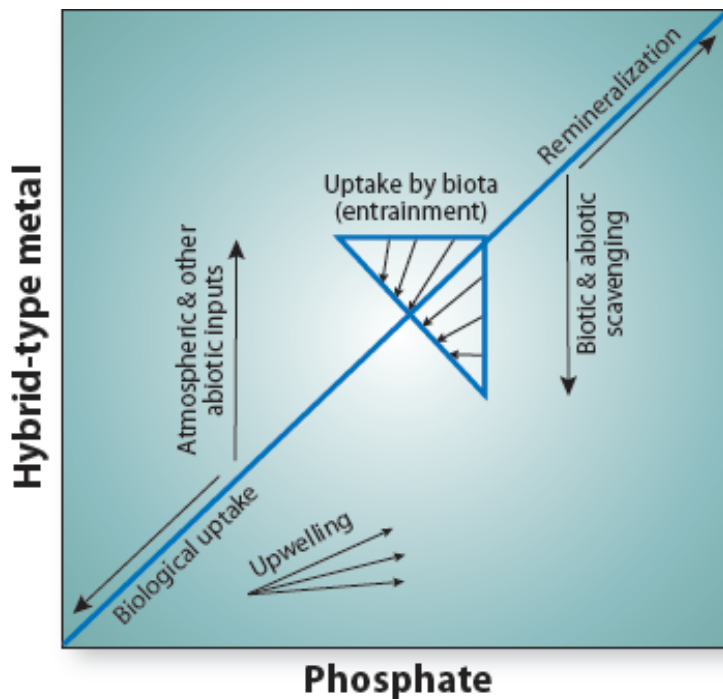


Fig. 7. A schematic showing vectors for processes influencing hybrid-type metals relative to phosphate, where hybrid-type metals refers to those that have the combination of micronutrient uptake and scavenging processes influencing vertical structure. Biologically influenced processes such as phytoplankton uptake and remineralization of particles create diagonal vectors (variable individual species metal quotas are aggregated for a community quota). Abiotic processes (or non-nutritive processes in the case of microbial manganese oxidation) such as aeolian deposition and scavenging result in near vertical vectors (Fig. 8d). Upwelling should result in a diagonal vector with a lower slope than the biotic vectors due to the effect of scavenging on removal of hybrid-type metal relative to phosphate. After Noble et al.(2008).

Cobalt in the Ross Sea

M. A. Saito et al.

Title Page

Abstract Introduction

Conclusions References

Tables Figures

◀ ▶

◀ ▶

Back Close

Full Screen / Esc

Printer-friendly Version

Interactive Discussion



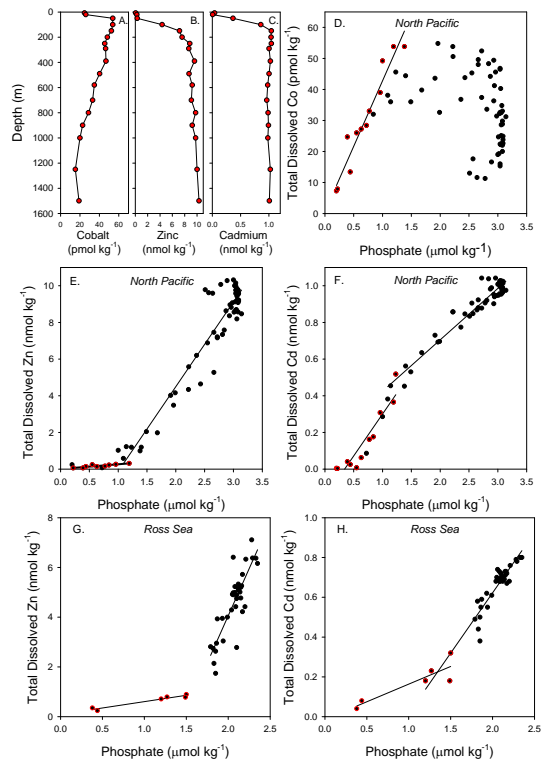


Fig. 8. Examination of relationships between Co, Cd, and Zn and phosphate in the subarctic Pacific and Ross Sea in previous studies (Martin et al., 1989; Fitzwater et al., 2000). **(A–C)** Vertical profiles of Co, Zn, and Cd in the subarctic Pacific/Gulf of Alaska (Station T8) from Martin et al. (1989) with Co showing the influence of scavenging at intermediate depths. **(D)** A correlation of subarctic Pacific cobalt with phosphate was present in the upper 100 m of several vertical profiles (red outline), whereas Co from below the euphotic zone to 4000 m depth showed the influence of scavenging with a downward curl relative to phosphate (see scavenging vector in Fig. 7). **(E–F)** The subarctic Pacific Zn vs. PO_4^{3-} and Cd vs. PO_4^{3-} showed a concave and convex kink, respectively, where the datasets were separated into shallow (red outline) and deep (black) and the estimated stoichiometries are shown in Table 2. **(G–H)** Shallow (red outline) and deep (black) Zn vs. PO_4^{3-} and Cd vs. PO_4^{3-} relationships in the Ross Sea using data from Fitzwater et al. (1990), with linear regressions shown.

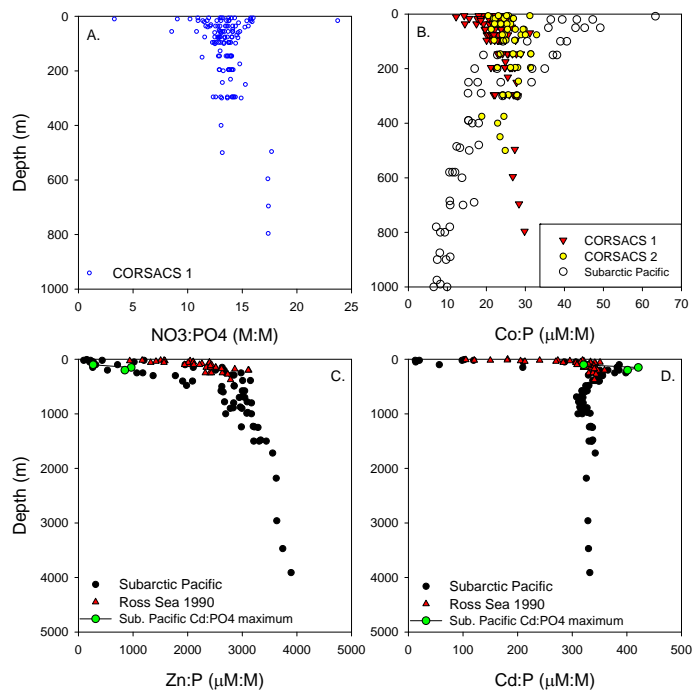


Fig. 9. (A) Comparison of $\text{NO}_3^- : \text{PO}_4^{3-}$ and (B) $\text{Co} : \text{PO}_4^{3-}$ ratios with respect to depth: from this study (vertical profiles of CORSACS-1 and 2 for $\text{Co} : \text{PO}_4^{3-}$) show relatively modest variability, with some dissolved $\text{Co} : \text{PO}_4^{3-}$ decreases in surface waters. The slope of NO_3^- plotted against PO_4^{3-} here was 13.4, lower than Redfield ratio consistent with previous Ross Sea findings (Arrigo et al., 1999). $\text{Co} : \text{PO}_4^{3-}$ ratios from the subarctic Pacific show the influence of scavenging removal at below the euphotic zone. (C–D) In contrast, dissolved $\text{Zn} : \text{PO}_4^{3-}$ and $\text{Cd} : \text{PO}_4^{3-}$ ratios in the subarctic Pacific (Martin et al., 1989) and Ross Sea (Fitzwater et al., 2000) show large decreases in surface waters, consistent with our argument for a higher Zn:P phytoplankton stoichiometry at the base of the euphotic zone contributing to the formation of the Zn and Cd kinks. Note the elevated $\text{Cd} : \text{PO}_4^{3-}$ ratios at ~100m and corresponding small maximum in $\text{Zn} : \text{PO}_4^{3-}$ values in the subarctic Pacific shown in green, the former of which we attribute to a biological concentrating mechanism (Noble et al., 2008).

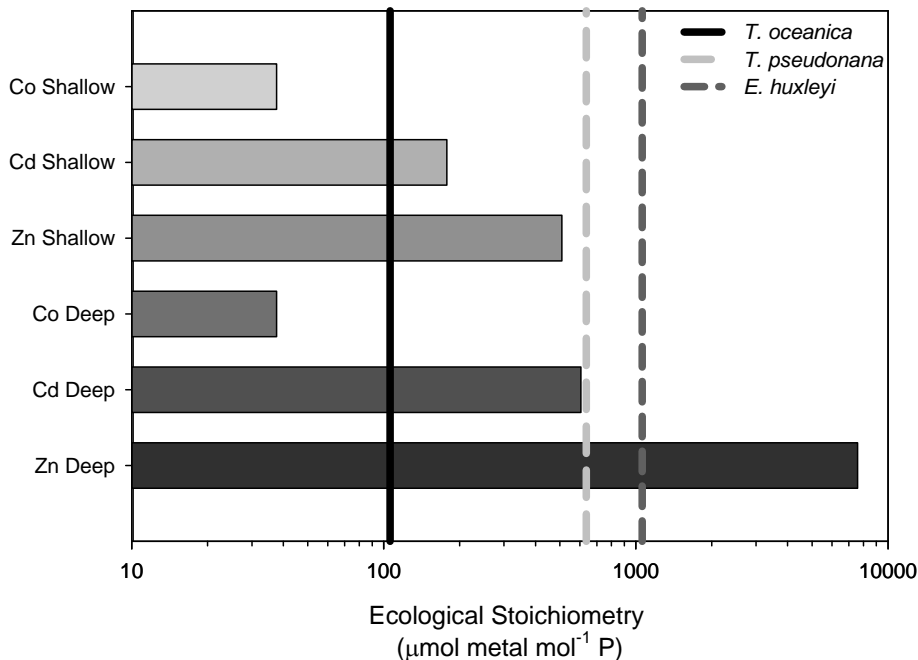


Fig. 10. Ecological stoichiometries from dissolved Zn, Cd, and Co in shallow water (<40 m) and intermediate depths (50–500 m) in the Ross Sea (horizontal bars, Tables 1 and 2; Co data from this study, Zn and Cd data from Fitzwater et al., 2000) compared to laboratory estimates of cellular stoichiometries of Zn:P below which phytoplankton growth limitation is observed (vertical lines, when no cobalt is added; data from Sunda and Huntsman, 1995). Co:P growth limiting stoichiometries (when no zinc is added) are quite similar to the Zn:P stoichiometries shown, with the exception that both diatoms (*T. oceanica* and *T. pseudonana*) do not reach the maximal growth rates with no zinc added (Sunda and Huntsman, 1995). These results imply that low Zn:PO₄³⁻ stoichiometries in shallow waters could phytoplankton community composition in the Ross Sea.

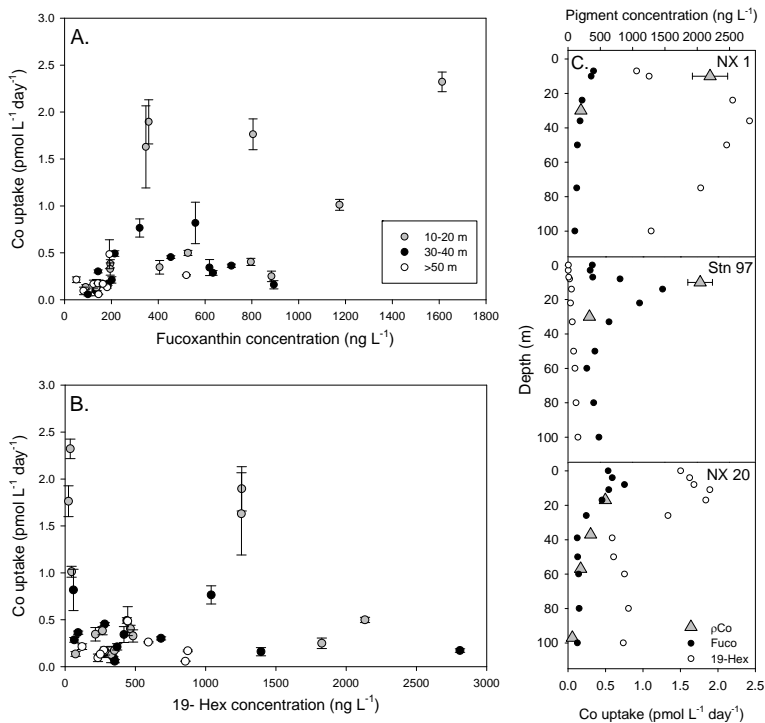


Fig. 11. Cobalt uptake rates and phytoplankton pigment concentrations from CORSACS-1 and 2. **(A)** Means of triplicate cobalt uptake rate measurements at three depth intervals (error bars are one standard deviation) versus the diatom indicator pigment fucoxanthin (Fuco) from the nearest depth. **(B)** Cobalt uptake versus the haptophyte indicator pigment 19-hexanolyoxyfucoxanthin (19-Hex). **(C)** Three representative profiles of Co uptake rates, Fuco and 19-Hex concentrations from NX1 and station 97 from CORSACS-1 and NX20 from CORSACS-2. Cobalt uptake rates show weak correlation with fucoxanthin (A, $r^2=0.35$) and no correlation with 19-Hex (B, $r^2=0.003$); although some high cobalt uptake rates co-occur with high 19-Hex abundance (C, NX1).