

This discussion paper is/has been under review for the journal Biogeosciences (BG).
Please refer to the corresponding final paper in BG if available.

Soil carbon stock increases in the organic layer of boreal middle-aged stands

M. Häkkinen, J. Heikkinen, and R. Mäkipää

Finnish Forest Research Institute, Vantaa Research Unit, P.O. Box 18, 01301 Vantaa, Finland

Received: 22 December 2010 – Accepted: 20 January 2011 – Published: 7 February 2011

Correspondence to: R. Mäkipää (raisa.makipaa@metla.fi)

Published by Copernicus Publications on behalf of the European Geosciences Union.

BGD

8, 1015–1042, 2011

**Soil C stock
increases in the
organic layer**

M. Häkkinen et al.

Title Page

Abstract

Introduction

Conclusions

References

Tables

Figures

◀

▶

◀

▶

Back

Close

Full Screen / Esc

Printer-friendly Version

Interactive Discussion



Abstract

Changes in the soil carbon stock can potentially have a large influence on global carbon balance between terrestrial ecosystems and atmosphere. Since carbon sequestration of forest soils is influenced by human activities, reporting of the soil carbon pool is a compulsory part of the national greenhouse gas (GHG) inventories. Various soil carbon models are applied in GHG inventories, however, the verification of model-based estimates is lacking. In general, the soil carbon models predict accumulation of soil carbon in the middle-aged stands, which is in good agreement with chronosequence studies and flux measurements of eddy sites, but they have not been widely tested with repeated measurements of permanent plots. The objective of this study was to evaluate soil carbon changes in the organic layer of boreal middle-aged forest stands. Soil carbon changes on re-measured sites were analyzed by using soil survey data that was based on composite samples as a first measurement and by taking into account spatial variation on the basis of the second measurement. By utilizing earlier soil surveys, a long sampling interval, which helps detection of slow changes, could be readily available.

The range of measured change in the soil organic layer varied from -260 to 1260 g m^{-2} over the study period of 16–19 years and $23 \pm 2 \text{ g m}^{-2}$ per year, on average. The increase was significant in 6 out of the 38 plots from which data were available. Although the soil carbon change was difficult to detect at the plot scale, the overall increase measured across the middle-aged stands agrees with predictions of the commonly applied soil models. Further verification of the soil models is needed with larger datasets that cover wider geographical area and represent all age classes, especially young stands with potentially large soil carbon source.

BGD

8, 1015–1042, 2011

Soil C stock increases in the organic layer

M. Häkkinen et al.

Title Page

Abstract

Introduction

Conclusions

References

Tables

Figures

◀

▶

◀

▶

Back

Close

Full Screen / Esc

Printer-friendly Version

Interactive Discussion



1 Introduction

Changes in the soil carbon stock can potentially have a large influence on global carbon balance between terrestrial ecosystems and atmosphere. Globally soil contains three times more carbon than atmosphere and in boreal forests soil carbon stock is three times larger than that of vegetation (Schimel, 1995; Goodale et al., 2002). Soil carbon stock, and especially its topmost organic layer, in managed boreal forests is directly (by timber harvesting and soil scarification) and indirectly (e.g. by climate change) affected by human activities. Due to the potentially large human induced changes in soil carbon balance, reporting of the changes in the soil carbon stock is an essential part of the national greenhouse gas (GHG) inventories. Currently, the majority of the countries that are able to report soil carbon apply model based approaches and only a few countries can rely on repeated soil measurements. In general, soil carbon models that can also be used in the GHG reporting (Peltoniemi et al., 2007) predict loss of carbon in regenerated young stands and accumulation of soil carbon in the middle-aged stands (Mäkipää et al., 1999; Peltoniemi et al., 2004; Palosuo et al., 2008). Such a modeled pattern is in good agreement with the chronosequence studies (e.g. Covington, 1981; Federer, 1984; Peltoniemi et al., 2004) but not confirmed with repeated measurements of permanent study sites (Yanai et al., 2000).

Verification of the modeled soil carbon dynamics with empirical data is essential for the development of reliable inventory methods. Measuring changes in soil carbon stocks is, however, challenging due to the fact soils are heterogeneous (Järvinen et al., 1993; Liski, 1995) and the rate of change is relatively small compared to the size of the stock (Yanai et al., 2003; Peltoniemi et al., 2004). Due to the slow changes, long sampling interval may be necessary in order to allow measurable changes to take place before re-sampling. At the moment, the use of earlier soil data may be the only effective way to test the soil carbon change hypothesis. Analyzing the change on the basis of repeated measurements of the earlier established sample plots is often challenging due to dissimilarities between the sampling designs applied in the first and

BGD

8, 1015–1042, 2011

Soil C stock increases in the organic layer

M. Häkkinen et al.

Title Page

Abstract

Introduction

Conclusions

References

Tables

Figures

◀

▶

◀

▶

Back

Close

Full Screen / Esc

Printer-friendly Version

Interactive Discussion



second inventory. In general, previous soil surveys contain information on mean carbon stocks but they lack information on within-site spatial variation. Current sampling can be designed to provide representative spatial information, but following the sampling design of the first one would improve the power of statistical testing due to correlated covariances of the first and second sampling.

In addition to soil heterogeneity, measuring soil changes is also challenging due to spatial autocorrelation of soil properties. Spatial autocorrelation should be accounted for when estimating the significance of a change in single study plots. Positive autocorrelation enlarges the variance of the mean of single plots but, on the other hand, it may also decrease the estimation variances of kriging estimations. Significant small-scale autocorrelation in soil properties has been detected when the properties of mineral soil sites have been investigated using variogram analysis and kriging (Järvinen et al., 1993; Arrouays et al., 1997; Bruckner et al., 1999). Small-scale spatial autocorrelation in the amount of carbon has also been identified using variogram analysis (Liski, 1995; Mättänen et al., 1999; Schönig et al., 2006; Muukkonen et al., 2009). Spatially autocorrelated soil data have also been studied using cross-variograms and co-kriging in many geostatistical papers (Papritz and Flühler, 1994; Papritz and Webster, 1995; Lark, 2002). However, these methods are not applicable if the samples from the first inventory are composite ones with unknown variances. Since spatial variation in soil properties is widely acknowledged, the influence of spatial pattern on estimated mean values has commonly been reduced by taking numerous subsamples, which are analyzed as one composite sample (e.g. Ellert et al., 2000 and Smith, 2000).

The objective of this study was to evaluate soil carbon changes in the organic layer of boreal middle-aged forest stands. In addition, the aim was to develop methods that facilitate effective use of earlier soil inventory data that was based on composite samples together with new data that carry information on the spatial variation of soil properties. The focus was on the soil organic layer, a clearly distinguished soil horizon of podzols, because it is the most dynamic part of forest soil and the most likely changes first take place in this topmost layer. This study was restricted to middle-aged stands for which

BGD

8, 1015–1042, 2011

Soil C stock increases in the organic layer

M. Häkkinen et al.

Title Page

Abstract

Introduction

Conclusions

References

Tables

Figures

◀

▶

◀

▶

Back

Close

Full Screen / Esc

Printer-friendly Version

Interactive Discussion



stand development phase soil models predict consistently a trend of increasing soil carbon stock. However, scrutinized tests of such trends are lacking.

2 Material and methods

2.1 Soil sampling and carbon analysis

5 This study was based on soil data collected from a subset of 38 sample plots from a nation-wide network of forest monitoring plots. A systematic network of 3000 permanent sample plots was established by the Finnish National Forest Inventory for the monitoring of forest ecosystems (Mäkipää and Heikkinen, 2003), and the first soil sampling on mineral soil sites was performed on a sub-sample of 486 plots from the nation-wide network during 1986–1989 (Tamminen and Starr, 1990). In 2005, soil sampling was repeated on a subsample of $n = 38$ plots where the stand age varied between 22 and 65 years at the time of the first sampling. The 38 plots were located in Southern Finland, excluding the coastal region (Fig. 1). The tree stand was dominated by Scots pine (*Pinus sylvestris* L.) on 24 of the plots and by Norway spruce (*Picea abies* (L.) H. Karst.) on 14 plots (Table 1). The sample plots divided into two or more forest patches (according to fertility level, stand age, or management history) were not included. The tree and stand parameters were measured on circular plots of 300 m² (radius 9.77 m). The fertility class of the plots ranged from herb-rich to xeric heath forests (Table 1). The soil type was podzol and the organic layer was mor or moder (plots with signs of peat formation were excluded). The collection of plots used in this study represented intermediate age classes of coniferous forest stands on mineral soils in Southern Finland.

15 The organic layer (excluding the litter layer) sampling in the first soil survey was based on composite samples, comprising $m_1 = 30$ sub-samples (Tamminen and Starr, 1990). The sub-samples were combined which resulted in only one mean value per plot and no information on variance. The second sampling was designed to provide

Soil C stock increases in the organic layer

M. Häkkinen et al.

Title Page

Abstract

Introduction

Conclusions

References

Tables

Figures

◀

▶

◀

▶

Back

Close

Full Screen / Esc

Printer-friendly Version

Interactive Discussion



information on the variation of the soil carbon stock and all sub-samples were analyzed separately. The organic layer was sampled with a cylinder ($d = 58$ mm). Above-ground parts of the living plants as well as the litter layer were excluded from the samples. Mineral soil horizon was separated out according to visual difference between the structure of organic and mineral soil layers of the podzolic soil. The instructions and the soil sampling equipment used in the first and in the second sampling were kept as similar as possible. Five different field teams participated in the first sampling (Table 1), and one person was responsible for taking the samples in the second sampling. The means of the amount of carbon in the samples taken by the different groups on the first sampling occasion were tested with simple mean tests. The results of these tests confirmed that sampling by different groups did not differ significantly from each other.

The sampling design is presented in Fig. 2. The organic layer samples were taken at points lying on a circle, $r = 11$ m, centered on the inventory plot. Although the first and the second round of sampling and carbon analyses were as similar as possible, sampling could not be performed at exactly the same points due to destruction of some of the first sampling points by removal of soil samples. As a result, some of the second sampling points had to be shifted. Furthermore, the second sampling of the organic layer was designed to provide information also on the spatial within-site variation of the soil carbon stock. In the second sampling, $m_2 = 40$ sub-samples were taken instead of 30 in order to also include shorter distances between the sampling points. All the 40 sub-samples were analyzed separately.

The samples were dried at a temperature of 35–44 °C, weighed, milled and sieved to pass through a 2 mm bottom sieve. The moisture content of the air-dried samples was determined on a TGA analyzer. The total carbon concentration was analyzed using a Leco CHN analyzer (Leco, St Joseph, MI, USA) in the Central Laboratory of the Finnish Forest Research Institute, which is an accredited test laboratory (in accordance with the standard SFS-EN ISO/IEC17025).

BGD

8, 1015–1042, 2011

Soil C stock increases in the organic layer

M. Häkkinen et al.

Title Page

Abstract

Introduction

Conclusions

References

Tables

Figures

◀

▶

◀

▶

Back

Close

Full Screen / Esc

Printer-friendly Version

Interactive Discussion



2.2 Variogram analysis

Standard geostatistical methods were used in analyzing the spatial autocorrelation and amounts of carbon on the plots (see Webster and Oliver, 2001). They were performed in the R environment (R Development Core Team, 2006) using the libraries geoR (Ribeiro Jr. and Diggle, 2001) and gstat (Pebesma, 2004). Spatial autocorrelation was studied using variograms. x_{tki} shall denote the location of the i -th sub-sample of plot k on the t -th sampling occasion, $t = 1, 2$, and $Z_t(\mathbf{x})$ shall denote the carbon concentration at the location \mathbf{x} at the time of the t -th sampling. Plot-specific experimental variograms were estimated from the spatially explicit observations $z_{2ki} = Z_2(\mathbf{x}_{2ki})$, $k = 1, \dots, n$, $i = 1, \dots, m_2$, of the second sampling using the equation

$$\hat{\gamma}_k(h) = \frac{1}{|2N(h)|} \sum_{(i,j) \in N(h)} (z_{2ki} - z_{2kj})^2 \quad (1)$$

where $N(h)$ is a set of pairs $(i, j) \in 1, 2, \dots, m_2$ for which $\|x_{2ki} - x_{2kj}\| \approx h$ and $|N(h)|$ is the number of the pairs in the set.

A spherical model was fitted to the empirical variograms. The spherical model is defined as

$$\gamma(h) = \begin{cases} c_0 + c \left[\frac{3h}{2a} - \frac{1}{2} \left(\frac{h}{a} \right)^3 \right] & \text{for } h \leq a, \\ c_0 + c & \text{for } h > a. \end{cases} \quad (2)$$

where c_0 is the nugget variance parameter, c the sill variance parameter, and a the range of spatial correlation. The spherical model was used because it has a well-defined range a and it exhibits linear behavior near the origin, thus making it suitable for representing properties that have high short-range variability. The experimental variograms were fitted by the restricted maximum likelihood criterion (REML) by weights $|N(h)|/h^2$.

The spatial autocorrelation is strong if the nugget parameter is much smaller than the sill. On the other hand, if the nugget parameter is approximately same as or bigger

BGD

8, 1015–1042, 2011

Soil C stock increases in the organic layer

M. Häkkinen et al.

Title Page

Abstract

Introduction

Conclusions

References

Tables

Figures

◀

▶

◀

▶

Back

Close

Full Screen / Esc

Printer-friendly Version

Interactive Discussion



than the sill, there is not much actual spatial autocorrelation as the nugget explains most of the spatial variability.

2.3 Plot-specific variances for the first sampling

Because the within-plot variances of the first measurements were unknown, they were estimated on the basis of the variograms fitted to the second measurements under the assumption that the variation at the time of the first measurement was similar to that of the second one. The observations of the first sampling occasion are plot-level averages

$$\bar{z}_{1k} = \frac{1}{m_1} \sum_{j=1}^{m_1} Z_1(\mathbf{x}_{1kj}), \quad (3)$$

and in the plot level analysis they are considered as predictions of the unknown means

$$\frac{1}{|U_k|} \int_{U_k} Z_1(\mathbf{x}) d\mathbf{x} \quad (4)$$

over circles U_k with radii r and origins at the centre points of the sample plots. The variances of the prediction errors can be expressed as

$$\text{Var}[\bar{z}_{1k} - \bar{Z}_1(U_k)] = \text{Var}(\bar{z}_{1k}) - 2\text{Cov}[\bar{z}_{1k}, \bar{Z}_1(U_k)] + \text{Var}[\bar{Z}_1(U_k)], \quad (5)$$

where

$$\text{Var}(\bar{z}_{1k}) = \frac{1}{m_1^2} \sum_{i=1}^{m_1} \sum_{j=1}^{m_1} \text{Cov}[Z_1(\mathbf{x}_{1ki}), Z_1(\mathbf{x}_{1kj})], \quad (6)$$

$$\text{Cov}[\bar{z}_{1k}, \bar{Z}_1(U_k)] = \frac{1}{m_1 |U_k|} \sum_{i=1}^{m_1} \int_{U_k} \text{Cov}[Z_1(\mathbf{x}_{1ki}), Z_1(\mathbf{x})] d\mathbf{x}, \quad (7)$$

and

$$\text{Var}[\bar{Z}_1(U_k)] = \frac{1}{|U_k|^2} \int_{U_k} \int_{U_k} \text{Cov}[Z_1(\mathbf{x}), Z_1(\mathbf{x}')] d\mathbf{x} d\mathbf{x}'. \quad (8)$$

The covariances in Eqs. (6)–(8) were obtained from the plot-specific variogram models fitted to the second measurement, and the integrals were approximated by appropriately scaled sums over dense grids discretizing the circles U_k .

2.4 Change in the carbon stocks of the organic layer

For single plots the mean carbon stocks of the second measurement of the organic layer were calculated by ordinary block kriging. The ordinary block kriging estimate over a block U_k is a weighted average of the data,

$$\hat{Z}(U_k) = \sum_{i=1}^{m_2} \lambda_i z_{2ki}. \quad (9)$$

Model-unbiasedness of the estimator 9 is ensured by the restriction $\sum_{i=1}^N \lambda_i = 1$.

The estimation variance is

$$\text{Var}[\hat{Z}_{2k} - \bar{Z}_2(U_k)] = 2 \sum_{i=1}^{m_2} \lambda_i \gamma_k(\mathbf{x}_{1ki}, U_k) - \sum_{i=1}^{m_2} \sum_{j=1}^{m_2} \lambda_i \lambda_j \gamma_k(\|\mathbf{x}_{1ki} - \mathbf{x}_{1kj}\|) - \gamma_k(U_k, U_k) \quad (10)$$

where

$$\gamma_k(\mathbf{x}_{1ki}, U_k) = \frac{1}{|U_k|} \int_{U_k} \gamma_k(\|\mathbf{x}_{1ki} - \mathbf{x}\|) d\mathbf{x} \quad (11)$$

and

$$\bar{\gamma}_k(U_k, U_k) = \frac{1}{|U_k|^2} \int_{U_k} \int_{U_k} \gamma_k(\|\mathbf{x} - \mathbf{x}'\|) d\mathbf{x} d\mathbf{x}'. \quad (12)$$

This variance was computed by replacing γ_k in (10)–(12) with the variogram model fitted to the second measurement of the k -th plot.

The confidence intervals of the first and the second measurement were calculated from the equations

$$5 \quad \bar{z}_{1k} \pm s_{0.95} \sqrt{\text{Var}(\bar{z}_{1k})} \quad \text{and} \quad \hat{z}_{2k} \pm s_{0.95} \sqrt{\text{Var}(\hat{z}_{2k})}, \quad (13)$$

where $s_{0.95}$ is the statistic from Student's t distribution at the 95% confidence level. The confidence intervals of the first and the second means of each plot were compared with each other. If they did not intersect, the change was considered statistically significant.

3 Results

10 3.1 Variogram analysis

In most of the studied plots, spatial autocorrelation in soil carbon stock of organic layer was found on the basis of the variograms (Fig. A1), which indicates that soil spatial variation needs to be taken into account when plot-wise mean carbon stocks are estimated. The estimated range parameter was constant in two plots and in one plot (number 496702), where the estimated range was 0.70 m, the spatial variation seemed to be very small-scale – this plot could also be considered to have a constant variogram. In these cases, spatial pattern does not influence on mean estimates of plot-wise carbon stocks of organic layer. In 17 cases out of 35 where spatial autocorrelation in soil carbon of organic layer was found, it seemed to disappear at distances shorter than
15 7 m (range parameter < 7 m). On the other hand, the estimated range parameter was larger than the radius of the soil sampling plots (11 m) in 7 of the 38 plots, and in 2 plots the range was larger than the diameter of the plot indicating that scale of spatial variation may be larger than we were able to evaluate with this data. Due to observed within-site spatial variation, mean carbon stocks of the organic layer in this study were
20

Soil C stock increases in the organic layer

M. Häkkinen et al.

Title Page

Abstract

Introduction

Conclusions

References

Tables

Figures

◀

▶

◀

▶

Back

Close

Full Screen / Esc

Printer-friendly Version

Interactive Discussion



estimated by kriging, which yields more realistic estimates than calculation of simple averages.

3.2 Soil carbon stock and stock change in the organic layer

We calculated simple mean stock estimates of the first and second measurements and the difference between them based on the empirical variances of the plot-specific stock estimates (Table 1). The mean carbon stock of the organic layer in the middle-aged stands (40–84 yr) of boreal forests during the second measurement was $1852 \pm 67 \text{ g m}^{-2}$. The mean carbon stock of the organic layer of all the 38 plots in the first measurement, 16–19 yr earlier, was $1444 \pm 95 \text{ g m}^{-2}$. The mean change of all the 38 plots was $412 \pm 44 \text{ g m}^{-2}$, $23 \pm 2 \text{ g C m}^{-2}$ per year. The amount of carbon was increased on 35 of the 38 plots (Table 1 and Fig. 3). However, the increase was statistically significant on only 6 plots (Fig. 4 and Table 1). The measured change was larger in younger stands (Fig. 5).

4 Discussion

The increase in the carbon stock of the organic layer ($23 \pm 2 \text{ g C m}^{-2} \text{ yr}^{-1}$) measured with repeated sampling in these managed boreal forests of intermediate age classes was higher than that reported earlier on the basis of chronosequence studies. Soil carbon accumulation of $8 \text{ g C m}^{-2} \text{ yr}^{-1}$ in the organic layer was reported in the chronosequence of windthrow pits in Alaska (Bormann et al., 1995), and long-term accumulation of the organic layer without fire resulted in an increase of 5 g C m^{-2} in Sweden (Wardle et al., 2003). Peltoniemi et al. (2004) measured and simulated 64 sites in boreal coniferous stands in Finland and obtained a $4.7 \pm 1.4 \text{ g C m}^{-2} \text{ yr}^{-1}$ increase in carbon in the simulations, and a $4.2 \pm 1.2 \text{ g C m}^{-2} \text{ yr}^{-1}$ increase in the organic layer in measured chronosequence data. Their study sites represented a wide range of age classes, while this study was restricted to stands of intermediate age classes where a

BGD

8, 1015–1042, 2011

Soil C stock increases in the organic layer

M. Häkkinen et al.

Title Page

Abstract

Introduction

Conclusions

References

Tables

Figures

◀

▶

◀

▶

Back

Close

Full Screen / Esc

Printer-friendly Version

Interactive Discussion



significant increase in the soil carbon stock was expected on the basis of the earlier simulation studies.

Increase in the soil carbon stock in over 20 yr-old stands has been consistently predicted with several models (e.g. Mäkipää et al., 1999; Chertov et al., 2001; Peltoniemi et al., 2004). In addition, we observed that the rate of soil carbon change tends to decrease with stand age (Fig. 5), which agrees with the understanding of soil carbon dynamics based on modeling where the rate of soil change is driven by annual biomass and litter production that decrease after a fast growth period and canopy closure. The measured soil carbon sequestration in the middle-aged stands is indirectly supported by the CO₂ flux data of eddy covariance measurement sites (e.g. Valentini et al., 2000; Kolari et al., 2004). After early development of a stand and closure of the canopy they show only minor variation in the gross primary production (GPP), however, the total ecosystem respiration tends to decrease with stand age, which is an indication of soil carbon accumulation (Kolari et al., 2004). The measured rate of soil carbon sequestration in the organic layer ($23 \pm 2 \text{ g C m}^{-2} \text{ yr}^{-1}$) is relatively slow in comparison to stand scale carbon sequestration of 192 and 323 $\text{g C m}^{-2} \text{ yr}^{-1}$ measured on 40- and 75-yr-old stands, respectively (Kolari et al., 2004). Thus, in the middle-aged stands soil organic layer may contribute to less than 10% of the forest carbon sink, but in the old-growth stands, where carbon sink is measured to be $240 \text{ g C m}^{-2} \text{ yr}^{-1}$, soil carbon sequestration continues and living trees have only a minor role (some $40 \text{ g C m}^{-2} \text{ yr}^{-1}$) (Luyssaert et al., 2008). According to the earlier model predictions supported by our current results, one may interpret that a change in the age class distribution from a predominance of younger age classes to middle-aged and mature forests may result in an increase in the soil carbon stock.

The mean carbon stock of the organic layer measured in the stands of 40–80 yr ($1850 \pm 70 \text{ g m}^{-2}$) is consistent with the large data set of 1248 sample plots in Southern Finland (Tamminen, 1991), where the mean carbon stocks of stand development classes 2, 3, and 4 (from young to mature) were 1450, 1630, and 1740 g C m^{-2} , respectively (assuming the inverse of the van Bemmelen factor, 1.72, for converting the

BGD

8, 1015–1042, 2011

Soil C stock increases in the organic layer

M. Häkkinen et al.

Title Page

Abstract

Introduction

Conclusions

References

Tables

Figures

◀

▶

◀

▶

Back

Close

Full Screen / Esc

Printer-friendly Version

Interactive Discussion



organic matter content to the carbon concentration). In this study, the average carbon stock of organic layer carbon increased by almost 30% from 1444 to 1852 g m⁻² in less than 20 yr. This accumulation of the soil organic layer takes place after a remarkable decline in the soil carbon stock after a regeneration of the stands and a release of carbon during early years of succession; Kolari et al. (2004) measured a net carbon source of 400 g C m⁻² yr⁻¹ on clear-cut site where the size of the organic layer carbon stock was similar to this study.

At the plot scale, the block kriging estimates and variances of the carbon amounts showed a significant change only on 6 of the 35 sites where the amount of carbon had increased. In general, changes smaller than one third of the stock were not significant and many large changes were also not significant due to large within-site variation (Fig. 4). This result is consistent with earlier findings which indicate that the detection of a change in soil carbon by re-measuring a single plot is challenging or impossible due to soil heterogeneity (large spatial variation) and the small temporal changes relative to the large total amount of carbon in forest soil (Yanai et al., 2000; Conen et al., 2003; Smith, 2004; Mäkipää et al., 2008). The amount of carbon appeared to have decreased on 3 plots (Table 1, Fig. 5), two of which were relatively fertile Norway spruce stands thinned some 5 years before the first sampling, and one had a management history with a lower basal area of the trees (harvesting of seedling trees), which evidently resulted in a decreased input of litter from the trees.

Possible measurement errors in this study are related to mislocated sample plots or sampling points within a plot in the second measurement, differences caused by the sampling practices of measurement groups, or inaccuracy in taking soil samples or in the carbon analysis. The exact location of the sample plots was known at both measurement times due to permanent marks of the sample plot centers, detailed descriptions of the location of the sampling points, very exact instructions and equipment. Similarly, the measurement error between the sample coordinates of the sampling points and the exact locations where they were taken was small, within 10 cm. The field personnel should not have significantly affected the results as they used the same precise

BGD

8, 1015–1042, 2011

Soil C stock increases in the organic layer

M. Häkkinen et al.

Title Page

Abstract

Introduction

Conclusions

References

Tables

Figures

◀

▶

◀

▶

Back

Close

Full Screen / Esc

Printer-friendly Version

Interactive Discussion



instructions for both measurements. Furthermore, the different field groups were tested to ensure that they were consistent with each other in terms of their sampling practices. The carbon concentrations and moisture of the soil samples were measured in an accredited laboratory and are considered very reliable.

5 Conclusions

We found spatial autocorrelation in the carbon stock of the organic layer, that has already been demonstrated in many other studies for a range of soil properties (Järvinen et al., 1993; Hokkanen et al., 1995; Liski, 1995; Bruckner et al., 1999; Mättänen et al., 1999; Muukkonen et al., 2009). Therefore, the spatial structure of the data was considered in the analysis of the soil data. The spatial variation of the soil carbon stock was taken into account on the basis of spatial sampling performed during the second measurement (mean and variance of carbon stocks of second sampling were estimated by kriging) with the assumption that the within-plot variation in soil carbon was the same in the first sampling. This approach provided a realistic basis for the plot-scale analysis of the soil carbon changes that have to build on soil inventories where composite samples are used in the first measurements. With spatial sampling in the second measurement, we were able to assess the total variation and to gain a more reliable assessment of the significance of the change than with only composite samples. Since the carbon stock changes are small in comparison to the size of the soil stock, the time period needed to detect a change could be tens of years. Therefore, in the analysis of soil carbon changes, we must be able to use the data from earlier soil surveys. Regional soil surveys provide a considerable amount of data based on composite sampling (e.g. Arrouays et al., 2001; Coomes et al., 2002; Tremblay et al., 2002; Jones et al., 2005; Lettens et al., 2004), and this could be utilized in assessing changes after re-measuring the same plots. In addition, it is common in forest soil surveys that soil samples cannot be collected at every planned point because of natural or other obstacles. The methods

Soil C stock increases in the organic layer

M. Häkkinen et al.

Title Page

Abstract

Introduction

Conclusions

References

Tables

Figures



Back

Close

Full Screen / Esc

Printer-friendly Version

Interactive Discussion



applied in this study can also take into account sampling with an unequal number of soil samples per plot.

We measured carbon sink in the soil organic layer, which may represent some 10% of the overall carbon sink in the middle-aged boreal forest stands. Soil carbon sequestration in the boreal forests of this age class has earlier been reported on the basis of the various soil carbon models (e.g. Mäkipää et al., 1999; Peltoniemi et al., 2004; Palosuo et al., 2008) that are also applied in the large scale forest carbon inventories including national GHG reporting under the UNFCCC. Our analysis of the empirical data from the southern boreal zone indicates that the model predicted soil carbon trend in the middle-aged stands complies with measurements. However, further verification of the models is needed with larger datasets that represent all age classes and a wider geographical area.

Acknowledgements. This study was co-funded by the European Commission through the Forest Focus pilot project “Monitoring Changes in the Carbon Stocks of Forest Soils” (<http://www.metla.fi/hanke/843002>). We would like to thank Mikko Peltoniemi and Markku Tamminen for their help with the databases and Pekka Tamminen for the design and execution of the first soil sampling.

References

- Arrouays, D., Vion, I., Jolivet, C., Guyon, D., Couturier, A., and Wilbert, J.: Short-range variability of some characteristics of a corn-cropped soil in French Gascony, Impacts on sampling designs, *Étud. Gestion Sols*, 4, 5–16, 1997. 1018
- Arrouays, D., Deslais, W., and Badeau, V.: The carbon content of topsoil and its geographical distribution in France, *Soil Use Manage.*, 17, 7–11, 2001. 1028
- Bormann, B. T., Spaltenstein, H., McClellan, M. H., Ugolini, F. C., Cromack Jr., K., and Nay, S. M.: Rapid soil development after windthrow disturbance in pristine forests, *J. Ecol.*, 83, 747–757, 1995. 1025
- Bruckner, A., Kandeler, E., and Kampichler, C.: Plot-scale spatial patterns of soil water content,

BGD

8, 1015–1042, 2011

Soil C stock increases in the organic layer

M. Häkkinen et al.

Title Page

Abstract

Introduction

Conclusions

References

Tables

Figures

◀

▶

◀

▶

Back

Close

Full Screen / Esc

Printer-friendly Version

Interactive Discussion



Soil C stock increases in the organic layer

M. Häkkinen et al.

Title Page

Abstract

Introduction

Conclusions

References

Tables

Figures

◀

▶

◀

▶

Back

Close

Full Screen / Esc

Printer-friendly Version

Interactive Discussion



- pH, substrate-induced respiration and N mineralization in a temperate coniferous forest, *Geoderma*, 93, 207–223, 1999. 1018, 1028
- Cajander, A. K.: Forest types and their significance, *Acta For. Fenn.*, 56, 1–71, 1949. 1034
- Chertov, O. G., Komarov, A. S., Nadporozhskaya, M. A., Bykhovets, S. A., and Zudin, S. L.: ROMUL – a model of forest soil organic matter dynamics as a substantial tool for forest ecosystem modeling, *Ecol. Model.*, 138, 289–308, 2001. 1026
- 5 Conen, F., Yakutin, M. V., and Sambuu, A. D.: Potential for detecting changes in soil organic carbon concentrations resulting from climate change, *Glob. Change Biol.*, 9, 1515–1520, 2003. 1027
- 10 Coomes, D. A., Allen, R. B., Scott, N. A., Goulding, C., and Beets, P.: Designing systems to monitor carbon stocks in forests and shrublands, *Forest Ecol. Manag.*, 164, 89–108, 2002. 1028
- Covington, W. W.: Changes in forest floor organic matter and nutrient content following clear cutting in northern hardwoods, *Ecology*, 62, 41–48, 1981. 1017
- 15 Ellert, B. H., Janzen, H. H., and McConkey, B. G.: Measuring and comparing soil carbon storage, in: *Assessment methods for soil carbon*, edited by: Kimble, J. M., Follett, R. F., and Stewart, B. A., CRC Press, 131–146, 2000. 1018
- Federer, C. A.: Organic matter and nitrogen content of the forest floor in even-aged northern hardwoods, *Can. J. Forest Res.*, 14, 763–767, 1984. 1017
- 20 Goodale, C. L., Apps, M. J., Birdsey, R. A., Field, C. B., Heath, L. S., Houghton, R. A., Jenkins, J. C., Kohlmaier, G. H., Kurz, W., Liu, S., Nabuurs, G.-J., Nilsson, S., and Shvidenko, A. Z.: Forest carbon sinks in the northern hemisphere, *Ecol. Appl.*, 12, 891–899, 2002. 1017
- Hokkanen, T. J., Järvinen, E., and Kuuluvainen, T.: Properties of top soil and the relationship between soil and trees in a boreal Scots pine stand, *Silva Fenn.*, 29, 189–203, 1995. 1028
- 25 Hotanen, J.-P., Nousiainen, H., Mäkipää, R., Reinikainen, A., and Tonteri, T.: *Metsätyypit – opas kasvupaikkojen luokitteluun*, Metsäkustannus, 2008. 1034
- Jones, R. J. A., Hiederer, R., Rusco, E., and Montanarella, L.: Estimating organic carbon in the soils of Europe for policy support, *Eur. J. Soil Sci.*, 56, 655–671, 2005. 1028
- Järvinen, E., Hokkanen, T. J., and Kuuluvainen, T.: Spatial heterogeneity and relationships of mineral soil properties in a boreal *Pinus sylvestris* stand, *Scand. J. Forest Res.*, 8, 435–445, 1993. 1017, 1018, 1028
- 30 Kolari, P., Pumpanen, J., Rannik, Ü, Ilvesniemi, H., Hari, P., and Berninger, F.: Carbon balance of different aged Scots pine forests in Southern Finland, *Glob. Chang. Biol.*, 10, 1106–1119,

Soil C stock increases in the organic layer

M. Häkkinen et al.

Title Page

Abstract

Introduction

Conclusions

References

Tables

Figures

◀

▶

◀

▶

Back

Close

Full Screen / Esc

Printer-friendly Version

Interactive Discussion



2004. 1026, 1027

Lark, R. M.: Robust estimation of the pseudo cross-variogram for cokriging soil properties, *Eur. J. Soil Sci.*, 53, 253–270, 2002. 1018

Letkens, S., Orshoven, J. V., van Wesemael, B., and Muys, B.: Soil organic and inorganic carbon contents of landscape units in Belgium derived using data from 1950 to 1970, *Soil Use Manage.*, 20, 40–47, 2004. 1028

Liski, J.: Variation in soil organic carbon and thickness of soil horizons within a boreal forest stand – effect of trees and implications for sampling, *Silva Fenn.*, 29, 255–266, 1995. 1017, 1018, 1028

Luyssaert, S., Schulze, E.-D., Börner, A., Knohl, A., Hessenmöller, D., Law, B. E., Ciais, P., and Grace, J.: Old-growth forests as global carbon sinks, *Nature*, 455, 213–215, 2008. 1026

Muukkonen, P., Häkkinen, M., and Mäkipää, R.: Spatial variation in soil carbon in the organic layer of managed boreal forest soil – implications for sampling design, *Env. Monit. Assess.*, 158, 67–76, 2009. 1018, 1028

Mäkipää, R. and Heikkinen, J.: Large-scale changes in abundance of terricolous bryophytes and macrolichens in Finland, *J. Veg. Sci.*, 14, 497–508, 2003. 1019

Mäkipää, R., Karjalainen, T., Pussinen, A., and Kellomäki, S.: Effects of climate change and nitrogen deposition on the carbon sequestration of a forest ecosystem in the boreal zone, *Can. J. Forest Res.*, 29, 1490–1501, 1999. 1017, 1026, 1029

Mäkipää, R., Häkkinen, M., Muukkonen, P., and Peltoniemi, M.: The costs of monitoring changes in forest soil carbon stocks, *Boreal Environ. Res.*, 13, 120–130, 2008. 1027

Mättänen, M., Järvinen, E., Hokkanen, T. J., Kuuluvainen, T., and Ohtonen, R.: Spatial distribution of soil ergosterol content of the organic layer in a mature Scots pine (*Pinus sylvestris* L.) forest, *Soil Biol. Biochem.*, 31, 503–516, 1999. 1018, 1028

Palosuo, T., Peltoniemi, M., Mikhailov, A., Komarov, A., Faubert, P., Thürig, E., and Lindner, M.: Projecting effects of intensified biomass extraction with alternative modelling approaches, *Forest Ecol. Manag.*, 255, 1423–1433, 2008. 1017, 1029

Papritz, A. and Flüher, H.: Temporal change of spatially autocorrelated soil properties: optimal estimation by cokriging, *Geoderma*, 62, 29–43, 1994. 1018

Papritz, A. and Webster, R.: Estimating temporal change in soil monitoring: II. Sampling from simulated fields, *Eur. J. Soil Sci.*, 46, 13–27, 1995. 1018

Pebesma, E. J.: Multivariate geostatistics in S: the gstat package, *Comput. Geosci.*, 30, 683–691, 2004. 1021

Soil C stock increases in the organic layer

M. Häkkinen et al.

Title Page

Abstract

Introduction

Conclusions

References

Tables

Figures

◀

▶

◀

▶

Back

Close

Full Screen / Esc

Printer-friendly Version

Interactive Discussion



- Peltoniemi, M., Mäkipää, R., Liski, J., and Tamminen, P.: Changes in soil carbon with stand age – an evaluation of a modelling method with empirical data, *Glob. Chang. Biol.*, 10, 2078–2091, 2004. 1017, 1025, 1026, 1029
- Peltoniemi, M., Thürig, E., Ogle, S., Palosuo, T., Shrumpf, M., Wützler, T., Butterbach-Bahl, K., Chertov, O., Komarov, A., Mikhailov, A., Gärdenäs, A., Perry, C., Liski, J., Smith, P., and Mäkipää, R.: Models in country scale carbon accounting of forest soils, *Silva Fenn.*, 41, 575–602, 2007. 1017
- R Development Core Team: A language and environment for statistical computing, R Foundation for Statistical Computing, <http://www.R-project.org>, 2006. 1021
- Ribeiro Jr., P. and Diggle, P.: geoR: a package for geostatistical analysis, *R-NEWS*, 1, 14–18, <http://cran.R-project.org/doc/Rnews>, 2001. 1021
- Schimel, D. S.: Terrestrial ecosystems and the carbon cycle, *Glob. Change Biol.*, 1, 77–91, 1995. 1017
- Schöning, I., Totsche, K. U., and Kögel-Knabner, I.: Small scale spatial variability of organic carbon stocks in litter and solum of a forested Luvisol, *Geoderma*, 136, 631–642, 2006. 1018
- Smith, G. R.: Toward an efficient method for measuring soil organic carbon stocks in forests, in: *Assessment methods for soil carbon*, edited by: Kimble, J. M., Follett, R. F., and Stewart, B. A., CRC Press, 2000. 1018
- Smith, P.: How long before a change in soil organic carbon can be detected?, *Glob. Change Biol.*, 10, 1878–1883, 2004. 1027
- Tamminen, P.: Kangasmaan ravinnetunnusten ilmaiseminen ja viljavuuden alueellinen vaihtelu Etelä-Suomessa. Summary: Expression of soil nutrient status and regional variation in soil fertility of forested sites in southern Finland, *Folia Forestalia*, 777, 3–29, 1991. 1026
- Tamminen, P. and Starr, M.: A survey of forest soil properties related to soil acidification in southern Finland, *Finnish Forest Research Institute*, 235–251, 1990. 1019
- Tremblay, S., Ouimet, R., and Houle, D.: Prediction of organic carbon content in upland forest soils of Quebec, Canada, *Can. J. For. Res.*, 32, 903–914, 2002. 1028
- Valentini, R., Matteucci, G., Dolman, A. J., Schulze, E.-D., Rebmann, C., Moors, E. J., Granier, A., Gross, P., Jensen, N. O., Pilegaard, K., Lindroth, A., Grelle, A., Bernhofer, C., Grünwald, T., Aubinet, M., Celeumans, R., Kowalski, A. S., Vesala, T., Rannik, Ü., Berbigier, P., Loustau, D., Guðmundsson, J., Thorgeirsson, H., Ibrom, A., Morgenstern, K., Clement, R., Moncrieff, J., Montagnani, L., Minerbi, S., and Jarvis, P. G.: Respiration as the main determinat of

- carbon balance in European forests, *Nature*, 404, 861–865, 2000. 1026
- Wardle, D. A., Hörnberg, G., Zackrisson, O., Kalela-Brundin, M., and Coomes, D. A.: Long-term effects of wildfire on ecosystem properties across an island area gradient, *Science*, 300, 972–975, 2003. 1025
- 5 Webster, R. and Oliver, M.: *Geostatistics for Environmental Statistics*, John Wiley & Sons, 2001. 1021
- Yanai, R. D., Arthur, M. A., Siccama, T. G., and Federer, C. A.: Challenges of measuring forest floor organic matter dynamics: repeated measures from a chronosequence, *Forest Ecol. Manag.*, 138, 273–283, 2000. 1017, 1027
- 10 Yanai, R. D., Stehman, S., Arthur, M., Prescott, C., Friedland, A., Siccama, T., and Binkley, D.: Detecting change in forest floor carbon, *Soil Sci. Soc. Am. J.*, 67, 1583–1593, 2003. 1017

BGD

8, 1015–1042, 2011

**Soil C stock
increases in the
organic layer**

M. Häkkinen et al.

Title Page

Abstract

Introduction

Conclusions

References

Tables

Figures

◀

▶

◀

▶

Back

Close

Full Screen / Esc

Printer-friendly Version

Interactive Discussion



Soil C stock
increases in the
organic layer

M. Häkkinen et al.

Title Page

Abstract

Introduction

Conclusions

References

Tables

Figures

◀

▶

◀

▶

Back

Close

Full Screen / Esc

Printer-friendly Version

Interactive Discussion



Table 1. Mean carbon stocks of the organic layer according to the first (z_{1k}) and the second measurement (z_{2k}) and their standard deviations ($\sqrt{\text{Var}(z_{1k})}$ and $\sqrt{\text{Var}(z_{2k})}$).

Nr of site	Soil C stock, 1st		Soil C stock, 2nd		Ftype ^a	Year ^b	Age ^c (yr)	Pine ^d (m ² ha ⁻¹)	Spruce ^d (m ² ha ⁻¹)	Deciduous ^d (m ² ha ⁻¹)	Group ^e	Change ^f (g C m ⁻²)
	Mean (g C m ⁻²)	Sd (g C m ⁻²)	Mean (g C m ⁻²)	Sd (g C m ⁻²)								
134502	1976	280	2106	168	2	1986	75	7.4	22.9	0.4	1	130
136101	1580	249	1986	118	4	1986	46	12.4			2	406
176101	1972	217	1715	107	4	1986	44	14.1			2	-257
212901	2842	566	3924	309	2	1986	60	2.2	22.7	3.5	3	1082
215102	1360	164	1704	109	3	1986	75	8.7	9.0		1	344
215301	1477	229	1985	102	3	1986	65	22.9			1	508
232101	1525	275	2293	190	3	1986	42		1.7		3	767
254301	1552	186	1371	131	2	1987	75		21.8	0.3	3	-181
255101	1176	148	1371	85	4	1987	60	15.0	4.8	0.9	1	195
256501	1439	287	1765	153	3	1987	40	4.3	0.3		4	325
272103	1218	228	1514	121	2	1986	75	35.6		0.4	3	296
273101	1562	313	1791	112	2	1986	55	7.3			3	229
317304	1241	233	1945	102	4	1987	56		31.4	2.0	4	704*
332301	1636	352	2215	180	2	1987	83		9.5	4.0	3	580
337501	1563	241	1931	142	2	1987	65	11.5			4	368
373701	1687	434	2052	153	4	1987	46	0.3	14.2		3	364
373901	917	194	1564	113	3	1987	50		2.5	1.2	3	647*
396101	1369	298	1710	133	2	1988	75	7.0	11.4		4	342
397101	987	124	1837	88	2	1987	47	9.4			4	851*
417702	1097	139	1792	141	4	1988	50	11.6			2	695*
435301	1572	252	1821	169	3	1988	55	2.7	5.9		1	248
436101	1501	251	1494	145	3	1988	75		19.8	3.0	1	-6
454101	1551	217	1940	109	4	1988	55	18.3		1.4	3	389
455501	933	285	1205	130	3	1988	45	7.3	1.4	5.4	1	271
474701	1575	407	2334	220	3	1988	51	11.8		0.4	1	759
476304	1108	227	1379	91	3	1988	55	20.8			4	271
477901	1300	155	1806	119	4	1988	45	5.3	0.6	0.1	2	506
496702	1152	259	2034	233	4	1988	42	7.3			4	882
515902	1176	202	1546	118	4	1988	47	13.3			1	370
533501	1428	558	2687	210	4	1988	43	17.3			3	1260
537101	800	92	1334	67	5	1988	60	8.8			4	534*
575501	1021	117	1249	106	4	1988	40	3.9	0.7	1.3	1	228
636303	1828	237	1879	146	4	1988	55	3.0	1.2		5	51
675704	2286	506	2447	290	5	1988	65	6.5			5	161
714304	843	104	1081	62	5	1988	70	8.6			5	238
734701	1430	145	1983	92	5	1988	65	5.5			5	553*
735101	1624	596	1803	202	3	1988	75	19.2	1.9	4.7	5	179
794901	1582	220	1943	123	4	1989	65	5.2	1.4		2	360

^a Fertility level of the site according to the Finnish site type classification (Cajander, 1949; Hotanen et al., 2008): 2 = herb-rich heath forest, 3 = mesic heath forest, 4 = sub-xeric heath forest, and 5 = xeric heath forest.

^b The measurement year of the first sampling. The second sampling was conducted in 2005 of all plots.

^c At the time of the second sampling in 2005.

^d The basal areas of Scots pine, Norway spruce and deciduous trees on a plot measured during the first sampling.

^e The field teams that collected the first samples.

^f The symbol * indicates a significant change (95% confidence intervals did not intersect).

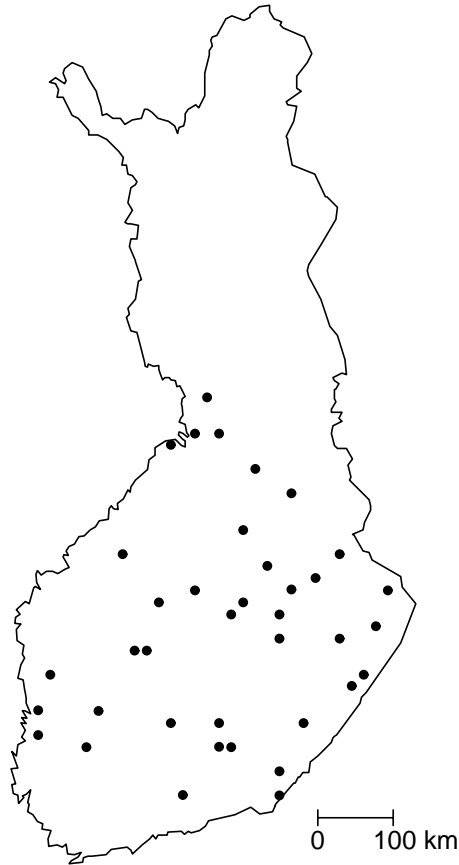


Fig. 1. Sample plots were located in the southern boreal and in the central boreal vegetation zone in Finland.

BGD

8, 1015–1042, 2011

**Soil C stock
increases in the
organic layer**

M. Häkkinen et al.

Title Page

Abstract

Introduction

Conclusions

References

Tables

Figures

◀

▶

◀

▶

Back

Close

Full Screen / Esc

Printer-friendly Version

Interactive Discussion



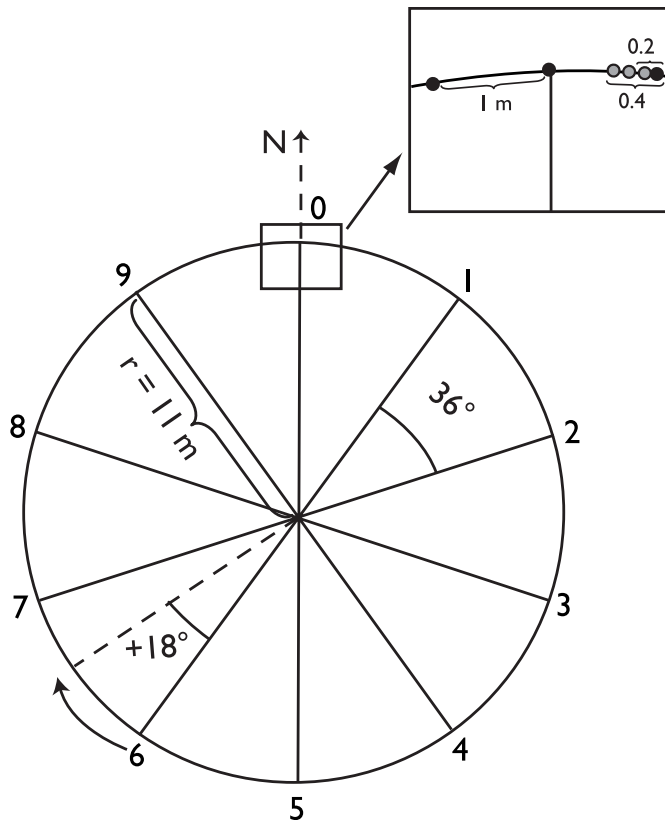


Fig. 2. Sampling design. In the first sampling, three samples were collected at each of the 10 locations (black points in the square). In the second sampling, samples were collected at the same locations unless the first sampling was destructive, in which case the second sampling points were shifted counterclockwise by 18 degrees. In the second sampling 4 samples were collected at each of the 10 locations. The fourth sample point is located at one of the three grey points in the square, either 0 m, 0.2 m or 0.4 m away from a black one.

Soil C stock increases in the organic layer

M. Häkkinen et al.

Title Page

Abstract Introduction

Conclusions References

Tables Figures

◀ ▶

◀ ▶

Back Close

Full Screen / Esc

Printer-friendly Version

Interactive Discussion



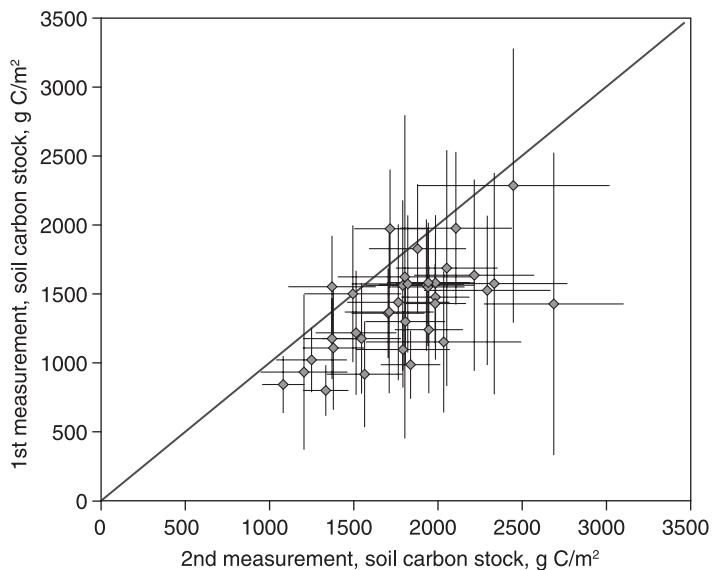


Fig. 3. The soil carbon stock of organic layer measured at the time of first sampling in late 1980's and at the time of second measurement in 2005.

Soil C stock increases in the organic layer

M. Häkkinen et al.

Title Page

Abstract

Introduction

Conclusions

References

Tables

Figures

◀

▶

◀

▶

Back

Close

Full Screen / Esc

Printer-friendly Version

Interactive Discussion



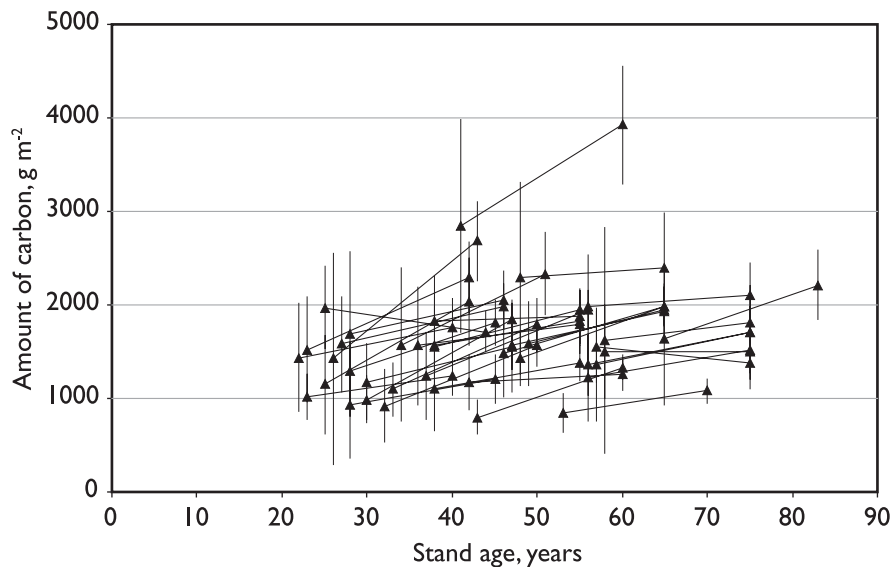


Fig. 4. The amount of carbon at the time of the first and the second sampling with 95% confidence intervals, connected with a line which describes the magnitude of the change.

Soil C stock increases in the organic layer

M. Häkkinen et al.

Title Page

Abstract

Introduction

Conclusions

References

Tables

Figures

◀

▶

◀

▶

Back

Close

Full Screen / Esc

Printer-friendly Version

Interactive Discussion



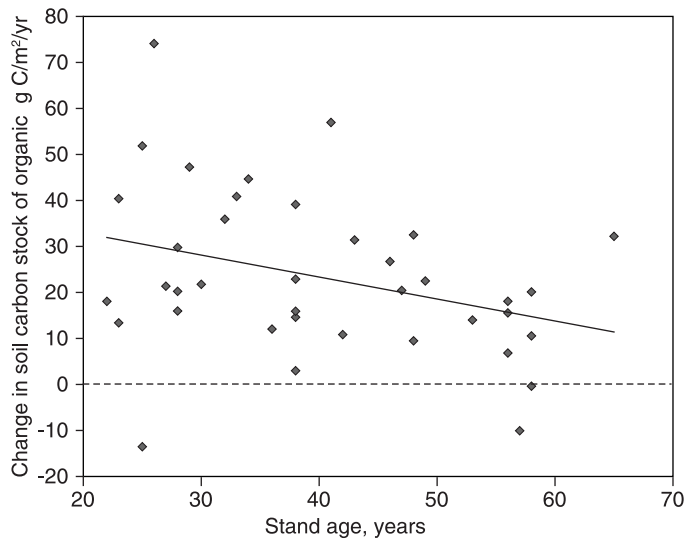


Fig. 5. The rate of soil carbon change in the organic layer in relation to stand age.

Soil C stock increases in the organic layer

M. Häkkinen et al.

Title Page

Abstract Introduction

Conclusions References

Tables Figures

◀ ▶

◀ ▶

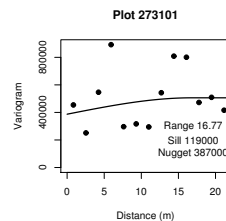
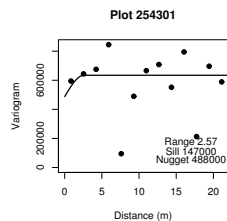
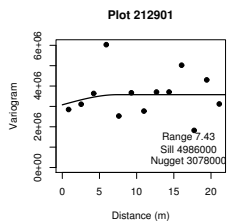
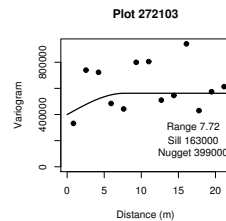
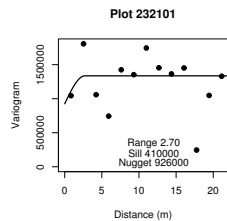
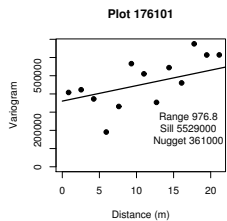
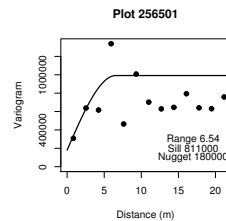
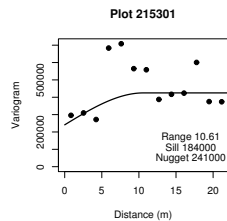
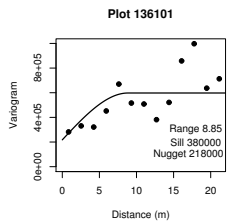
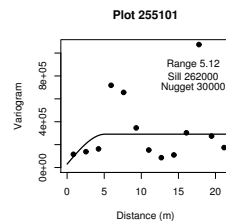
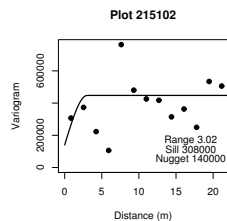
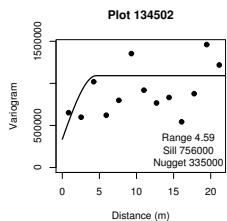
Back Close

Full Screen / Esc

Printer-friendly Version

Interactive Discussion





BGD

8, 1015–1042, 2011

Soil C stock increases in the organic layer

M. Häkkinen et al.

Title Page

Abstract

Introduction

Conclusions

References

Tables

Figures

◀

▶

◀

▶

Back

Close

Full Screen / Esc

Printer-friendly Version

Interactive Discussion

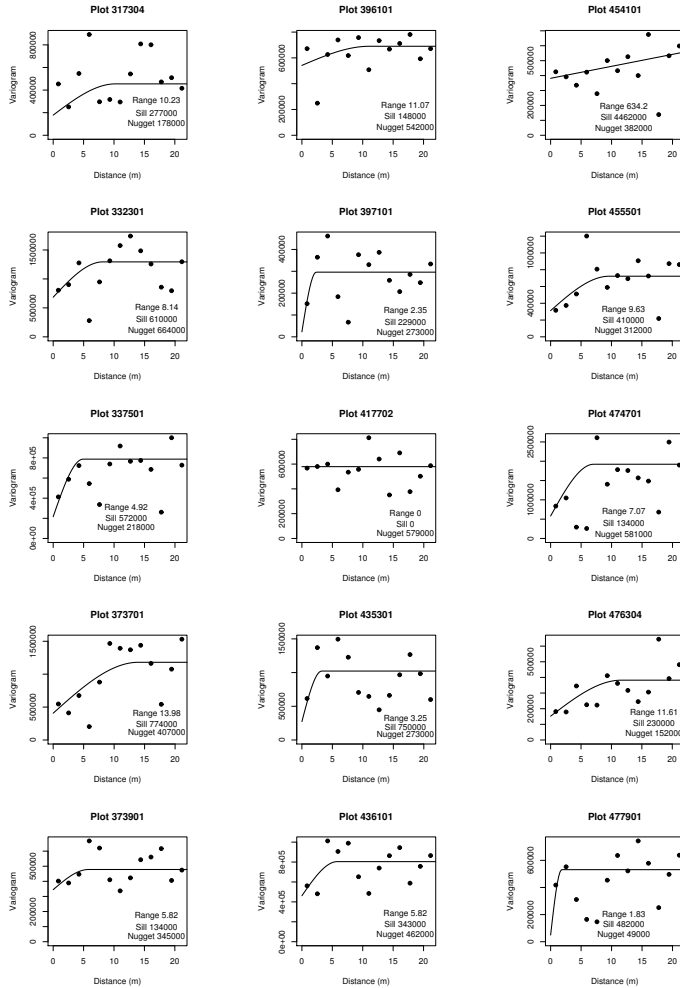
Discussion Paper | Discussion Paper | Discussion Paper | Discussion Paper | Discussion Paper

Fig. A1. Experimental variograms of all the 38 plots studied.



Soil C stock increases in the organic layer

M. Häkkinen et al.



Title Page

Abstract Introduction

Conclusions References

Tables Figures

⏪ ⏩

⏴ ⏵

Back Close

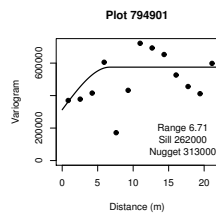
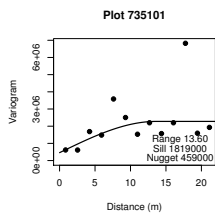
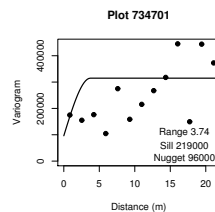
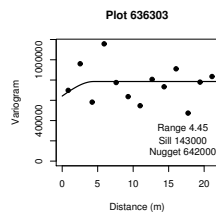
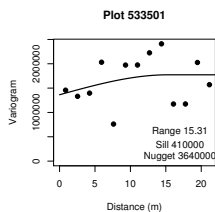
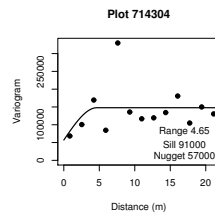
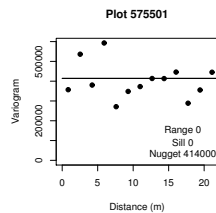
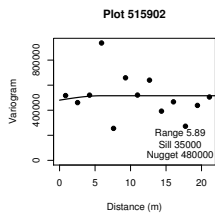
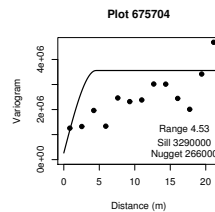
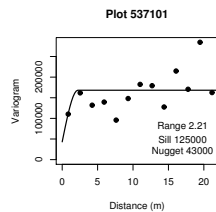
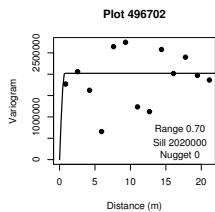
Full Screen / Esc

Printer-friendly Version

Interactive Discussion

Fig. A1. Continued.





Soil C stock increases in the organic layer

M. Häkkinen et al.

Title Page

Abstract

Introduction

Conclusions

References

Tables

Figures



Back

Close

Full Screen / Esc

Printer-friendly Version

Interactive Discussion



Fig. A1. Continued.