

This discussion paper is/has been under review for the journal Biogeosciences (BG).
Please refer to the corresponding final paper in BG if available.

Denitrification and inference of nitrogen sources in the karstic Floridan Aquifer

J. B. Heffernan^{1,2}, A. R. Albertin³, M. L. Fork¹, B. G. Katz⁴, and M. J. Cohen³

¹Department of Biological Sciences, Florida International University, Miami, FL, USA

²Southeast Environmental Research Center, Florida International University, Miami, FL, USA

³School of Forest Resources and Conservation, University of Florida, Gainesville, FL, USA

⁴US Geological Survey, Tallahassee, FL, USA

Received: 26 September 2011 – Accepted: 9 October 2011 – Published: 20 October 2011

Correspondence to: J. B. Heffernan (jheffer@fiu.edu)

Published by Copernicus Publications on behalf of the European Geosciences Union.

BGD

8, 10247–10294, 2011

Denitrification and inference of nitrogen sources in the karstic Floridan Aquifer

J. B. Heffernan et al.

Title Page

Abstract

Introduction

Conclusions

References

Tables

Figures

⏪

⏩

◀

▶

Back

Close

Full Screen / Esc

Printer-friendly Version

Interactive Discussion

Abstract

Aquifer denitrification is among the most poorly constrained fluxes in global and regional nitrogen budgets. The few direct measurements of denitrification in groundwaters provide limited information about its spatial and temporal variability, particularly at the scale of whole aquifers. Uncertainty in estimates of denitrification may also lead to underestimates of its effect on isotopic signatures of inorganic N, and thereby confound the inference of N source from these data. In this study, our objectives are to quantify the magnitude and variability of denitrification in the Upper Floridan Aquifer (UFA) and evaluate its effect on N isotopic signatures at the regional scale. Using dual noble gas tracers (Ne, Ar) to generate physical predictions of N₂ gas concentrations for 112 observations from 61 UFA springs, we show that excess (i.e. denitrification-derived) N₂ is highly variable in space and inversely correlated with dissolved oxygen (O₂). Negative relationship between O₂ and $\delta^{15}\text{N}_{\text{NO}_3}$ across a larger dataset of 113 springs, well-constrained isotopic fractionation coefficients, and strong $^{15}\text{N} : ^{18}\text{O}$ covariation further support inferences of denitrification in this uniquely organic-matter-poor system. Despite relatively low average rates, denitrification accounted for 32% of estimated aquifer N inputs across all sampled UFA springs. Back-calculations of source $\delta^{15}\text{N}_{\text{NO}_3}$ based on denitrification progression suggest that isotopically-enriched nitrate (NO₃⁻) in many springs of the UFA reflects groundwater denitrification rather than urban- or animal-derived inputs.

1 Introduction

Anthropogenic increases in reactive nitrogen (N) availability have wide-ranging consequences including eutrophication of aquatic systems, acidification of soils and surface waters, loss of biodiversity, and facilitation of disease transmission (Vitousek, 1994; Galloway et al., 2003; Smith and Schindler, 2009). Denitrification, which reduces NO₃⁻ to N₂ gas, mitigates this enrichment by returning N to long-residence-time atmospheric pools, and is an important component of the nitrogen cycle at local, regional,

Denitrification and inference of nitrogen sources in the karstic Floridan Aquifer

J. B. Heffernan et al.

Title Page

Abstract

Introduction

Conclusions

References

Tables

Figures



Back

Close

Full Screen / Esc

Printer-friendly Version

Interactive Discussion



and global scales (David et al., 2006; Seitzinger et al., 2006; Townsend and Davidson, 2006; Schlesinger, 2009; Sigman et al., 2009). Although denitrification was once thought to occur only via the oxidation of simple organic compounds, more recent work has demonstrated that NO_3^- reduction can involve multiple electron donors and end products (Burgin and Hamilton, 2007). Patchy and ephemeral distribution, diverse reaction modes, and challenges of direct measurement of N_2 all contribute to persistent high uncertainty in local, regional, and global estimates of denitrification (Davidson and Seitzinger, 2006; Groffman et al., 2009).

Aquifer denitrification is a potentially large component of regional and global nitrogen (N) budgets, with a recent global estimate of 44 Tg N yr^{-1} (16 % of land-based annual N inputs; (Seitzinger et al., 2006). However, existing estimates are based on simple models and are extremely poorly constrained (range of estimates from Seitzinger et al., 2006: $0\text{--}138 \text{ Tg N yr}^{-1}$), in large part due to the limited number and spatio-temporal extent of available direct measurements of denitrification. Additional uncertainty arises because existing studies of groundwater N concentrations and denitrification are potentially biased by preferential study of aquifers with high N loading and high rates of denitrification (Green et al., 2008; Schlesinger, 2009). Moreover, measures of denitrification based on nitrate loss appear to provide much higher estimates than those based on direct measurement of N_2 gas accumulation (Green et al., 2008). Despite their limited numbers, directly-measured aquifer denitrification rates nonetheless span several orders of magnitude, and associated reductions in NO_3^- range from negligible to complete across aquifer systems (Green et al., 2008). The extent to which these outcomes vary in space and time within individual aquifers is poorly understood.

Estimation of denitrification from N_2 gas concentrations in groundwaters requires determination of physical parameters (recharge temperature (T_{rec}) and excess air (A_{ex})) that influence the quantity and composition of dissolved gases (Vogel et al., 1981; Wilson and McNeill, 1997; Cey et al., 2009). Recharge temperature, rather than ambient temperature at the time of sample collection, is what determines the solubility of atmospheric gases at the time when infiltrating groundwater loses contact with the

BGD

8, 10247–10294, 2011

Denitrification and inference of nitrogen sources in the karstic Floridan Aquifer

J. B. Heffernan et al.

Title Page

Abstract

Introduction

Conclusions

References

Tables

Figures

⏪

⏩

◀

▶

Back

Close

Full Screen / Esc

Printer-friendly Version

Interactive Discussion



Denitrification and inference of nitrogen sources in the karstic Floridan Aquifer

J. B. Heffernan et al.

Title Page

Abstract

Introduction

Conclusions

References

Tables

Figures



Back

Close

Full Screen / Esc

Printer-friendly Version

Interactive Discussion



atmosphere. Depending on the seasonality of temperature, precipitation, and infiltration, as well as other factors, recharge temperatures can diverge substantially from mean annual air temperatures (Hall et al., 2005; Castro et al., 2007). Dissolution of excess air occurs when bubbles of atmospheric air are entrained beneath the saturated zone; supersaturation of gases with respect to surface conditions is enabled by hydrostatic pressure at depth. Direct simultaneous estimation of these parameters requires two tracers (typically noble gases; Feast et al., 1998; Cey et al., 2009), but most measurements of N_2 are made only in conjunction with Ar (Kana et al., 1994). Studies that estimate denitrification via direct measurement of N_2 thus typically rely on assumed constant values of either recharge temperature or excess air entrainment to estimate biologically-derived N_2 (e.g., Green et al., 2008). Since recharge temperature and excess air entrainment can vary at broad scales due to variation in climate and geological structure, assessment of denitrification at regional or broader scales requires estimation of these physical parameters for each study site.

Across diverse ecosystems, availability of organic matter is the primary driver of denitrification (Taylor and Townsend, 2010). Within ecosystems, spatial and temporal variability in the concentration of organic matter and nitrate and anoxic conditions produce heterogeneous mosaics of denitrifying activity (e.g., Harms and Grimm, 2008). In groundwater environments with strong directional flow, denitrification and other redox processes can follow distinctive spatial patterns reflecting the gradual downstream depletion of electron donors and acceptors (Chapelle et al., 1995; Hedin et al., 1998; Tarits et al., 2006). However, a growing body of research suggests that denitrification in most aquifers depends on matrix-derived, solid-phase electron donors (e.g., Fe^{2+} , H_2S) rather than surface-derived solutes (Green et al., 2008; Schwientek et al., 2008; Zhang et al., 2009; Torrento et al., 2010, 2011). As a result, concentrations of dissolved organic matter and other electron donors may be a poor indicator of denitrification rates across aquifers, and spatial patterns within aquifers may reflect the distribution of these reactants within the aquifer matrix rather than substrate depletion along advective flowpaths.

Denitrification and inference of nitrogen sources in the karstic Floridan Aquifer

J. B. Heffernan et al.

Title Page

Abstract

Introduction

Conclusions

References

Tables

Figures

⏪

⏩

◀

▶

Back

Close

Full Screen / Esc

Printer-friendly Version

Interactive Discussion



Efforts to understand and manage N enrichment of aquatic ecosystems have relied heavily on the distinctive isotopic signatures of potential sources (Kendall, 1998; Kendall et al., 2007), particularly the difference in $\delta^{15}\text{N}_{\text{NO}_3}$ between inorganic fertilizers (typically 0–3‰) and organic N pools (i.e. animal and human waste; typically 9–12‰).
5 More recently, methodological developments that permit determination of both N and O allow greater separation of sources with overlapping ^{15}N signatures (e.g., atmospheric deposition and inorganic fertilizer). Biogeochemical reactions such as denitrification and assimilation can alter these isotopic signatures during transport along soil-ocean flowpaths, potentially confounding N source inference (Kendall et al., 2007). Despite
10 pleas for caution (Bedard-Haughn et al., 2003), observed $\delta^{15}\text{N}_{\text{NO}_3}$ are commonly used to infer N sources and guide management and policy related to point and non-point inputs (Fogg et al., 1998; USGS, 2003; Harrington et al., 2010). While the potential effect of denitrification on isotope signatures is widely acknowledged, few studies to date have quantified its influence on source inference at the scale of a regional aquifer.

In addition to their utility in separating potentially confounded N sources, dual isotopic tracers ($\delta^{15}\text{N}_{\text{NO}_3}$ and $\delta^{18}\text{O}_{\text{NO}_3}$) of NO_3^- can also be used to infer nitrogen transformations. Although insufficient to directly estimate rates of denitrification, coupled enrichment of $\delta^{15}\text{N}_{\text{NO}_3}$ and $\delta^{18}\text{O}_{\text{NO}_3}$ is now widely used to infer the occurrence of fractionating processes (Burns et al., 2009). Among these are recent studies that suggest
20 denitrification in the Upper Floridan Aquifer and other karst groundwater systems (Panno et al., 2001; Albertin et al., 2011). One potential value of dual isotopic measurements is the ability to partition removal into its component processes (e.g. assimilation, denitrification) based on the ratio of $^{15}\text{N} : ^{18}\text{O}$ enrichment. Theoretical and laboratory studies have suggested that denitrification results in 2 : 1 fractionation of $^{15}\text{N} : ^{18}\text{O}$ (Aravena and Robertson, 1998; Lehmann et al., 2003), but other studies have recently
25 suggested a 1 : 1 ratio (Granger et al., 2008), in which case dual isotopes would be unable to distinguish between assimilation and denitrification.

In this study, our objectives are (1) to quantify the magnitude and variability of denitrification at the regional scale in a karstic groundwater system (the Upper Floridan

Aquifer (UFA)), and (2) to assess the influence of denitrification on isotopic signatures of nitrate in the UFA and its influence on apparent N sources. To these ends, we measured dissolved gases and other biogeochemical characteristics of 35 Florida springs, conducted a 3 yr study (quarterly-monthly samples) of 6 springs that feed the Ichetucknee River, and assembled published data describing dissolved gas concentration, nutrient chemistry, and/or nitrate isotope composition from over 100 additional springs. From a subset of 31 of these springs for which dual noble gas tracers (Ne and Ar) were available, we derived statistical predictors of excess air entrainment. These data enable an extensive and robust assessment of denitrification and its influence on nitrate isotopic composition at the scale of the entire UFA.

2 Methods

2.1 Study system

The karstic Upper Floridan Aquifer (UFA) supports the highest density of large natural artesian springs in the world (Fig. 1), and is a major regional and global economic resource (Notholt et al., 1989; Miller, 1990; Bonn and Bell, 2003; Bonn, 2004). Throughout parts of Northern Florida, the UFA is confined by low-permeability, high-clay deposits that preclude infiltration except via sinkholes and fractures; these confining layers are largely absent in the central-western portion of the state (Scott et al., 2004). Springs are concentrated along drainage features, especially near boundaries of confining layers. Land use throughout the study region includes variable mixtures of row crop agriculture, urban and suburban development, and secondary forest (Katz et al., 2001).

Geochemistry of the UFA can be characterized as a mixture of two end members. Older water, characteristic of matrix porosity and deep flowpaths, is generally anoxic, low in NO_3^- , and enriched in minerals; younger water characteristic of conduits and shallower flowpaths is generally oxic, enriched in NO_3^- , and sometimes subsaturated

BGD

8, 10247–10294, 2011

Denitrification and inference of nitrogen sources in the karstic Floridan Aquifer

J. B. Heffernan et al.

Title Page

Abstract

Introduction

Conclusions

References

Tables

Figures

⏪

⏩

◀

▶

Back

Close

Full Screen / Esc

Printer-friendly Version

Interactive Discussion



in mineral chemistry (Toth and Katz, 2006). Over event-driven and decadal timescales, the contribution of these water sources can vary considerably among springs as changes in flow drive exchange between primary and secondary porosity (i.e., the limestone matrix and karst conduits; Martin and Dean, 2001; Heffernan et al., 2010a, b).

5 Except during runoff and backflow events that deliver organic-matter-rich waters to conduits (Gulley et al., 2011), dissolved organic carbon (DOC) levels in UFA springs are among the lowest measured globally (Duarte et al., 2010). In conjunction with oxic conditions of many springs, low DOC concentrations undoubtedly contribute to the prevailing assumption that denitrification is negligible in this system (Katz, 2004).

10 NO_3^- concentrations in Florida springs have risen dramatically over the past half-century, and springs discharge accounts for a large proportion of the N load to estuarine and coastal waters (Pittman et al., 1997). Despite the perceived vulnerability of the UFA to nutrient enrichment, significant imbalances between inputs to North Florida landscapes and riverine export remain poorly understood (Katz et al., 2009).
15 Landscape-scale mass balance generally suggests inorganic fertilizer as the primary source of N enrichment (Katz et al., 2009), but isotopic studies (that assumed negligible denitrification) have indicated a greater role of organic N from animal or human wastewater (Katz et al., 2001).

2.2 Sample collection and analysis

20 Between June and September 2010, we sampled 33 Floridan Aquifer springs that varied in size, surficial hydrogeology, and NO_3^- and O_2 concentrations. At each spring, we measured O_2 , temperature, specific conductance, and pH from spring vents using a YSI 556 sonde equipped with an optical or Clark probe. Water samples for laboratory analyses were collected using a peristaltic pump with a 5 m weighted intake tube
25 placed as near as possible to the spring vent. We collected 3 replicate samples for nutrient and isotopic analyses in acid-washed pre-rinsed polyethylene bottles. During the synoptic survey, we collected 5 replicate field samples for dissolved gas analysis by flushing 300 ml BOD bottles 3 times, sealing with glass stopper, and capping with

BGD

8, 10247–10294, 2011

Denitrification and inference of nitrogen sources in the karstic Floridan Aquifer

J. B. Heffernan et al.

Title Page

Abstract

Introduction

Conclusions

References

Tables

Figures

⏪

⏩

◀

▶

Back

Close

Full Screen / Esc

Printer-friendly Version

Interactive Discussion



water-filled plastic caps to minimize exchange with atmosphere and to prevent stoppers from becoming dislodged during transport. Dissolved gas samples were stored under ice water until analysis within 36 h; water samples were frozen until analysis.

We measured dissolved N_2 and Ar using a Membrane Inlet Mass Spectrometer (MIMS: Kana et al., 1994) within 36 h of collection, over which period our storage protocol exhibited negligible atmospheric contamination. The membrane inlet mass spectrometer was equipped with a copper reduction column heated to 600°C to remove O_2 and reduce interference with N_2 measurements (Eyre et al., 2002). Standards for N_2 and Ar concentration consisted of atmosphere-equilibrated deionized water in 1 l spherical vessels incubated and stirred in high-precision water baths ($\pm 0.01^\circ\text{C}$) at their respective temperatures (10, 15, and 20°C) for at least 24 h prior to analysis. Gas concentrations in each standard were calculated using temperature-solubility formulas without salinity correction (Hamme and Emerson, 2004). Signal strength for samples and standards was determined as the mean value of the 1st minute following signal stabilization. To account for instrument drift, we ran complete standard curves every 6–8 samples and applied interpolated parameter values from adjacent standard curves (r^2 range: 0.997–1.00; mean $r^2 = 0.9997$) to estimate gas concentrations in each sample. A fourth standard equilibrated with pure N_2 gas served as an external source QC. Coefficients of variation for field replicates ranged from 0.22–2.27 % (mean: 0.80 %; median: 0.49 %).

We measured nitrate concentrations (expressed in this paper in mg NI^{-1}) in samples from the synoptic survey and Ichetucknee River springs times series using second-derivative UV spectroscopy (APHA et al., 2005) using an Aquamate UV-Vis spectrometer. Isotopic composition of nitrate ($\delta^{15}\text{N}_{\text{NO}_3}$, $\delta^{18}\text{O}_{\text{NO}_3}$) was measured using the bacterial denitrifier method (Sigman et al., 2001; Casciotti et al., 2002) in the Department of Geological Sciences at the University of Florida (2007–2009) or the UC-Riverside Facility for Isotope Ratio Mass Spectrometry (2010).

Previously-collected data both increased spatial coverage and in many cases provided repeated measurements of springs included in our synoptic survey (Fig. 1).

Denitrification and inference of nitrogen sources in the karstic Floridan Aquifer

J. B. Heffernan et al.

Title Page

Abstract

Introduction

Conclusions

References

Tables

Figures

⏪

⏩

◀

▶

Back

Close

Full Screen / Esc

Printer-friendly Version

Interactive Discussion



**Denitrification and
inference of nitrogen
sources in the karstic
Floridan Aquifer**

J. B. Heffernan et al.

Title Page

Abstract

Introduction

Conclusions

References

Tables

Figures

◀

▶

◀

▶

Back

Close

Full Screen / Esc

Printer-friendly Version

Interactive Discussion



Measurements of Ne, Ar, N₂, O₂, NO₃⁻, and nitrate isotopes ($\delta^{15}\text{N}_{\text{NO}_3}$, $\delta^{18}\text{O}_{\text{NO}_3}$) spanning from 1997 to 2008 were obtained from published articles (Katz, 2004; Katz et al., 2001, 2004; Toth and Katz, 2006; Knowles et al., 2010) and agency reports (Katz et al., 1999; Phelps, 2004; Phelps et al., 2006; Chasar et al., 2005), or directly from researchers when dissolved gas concentration or other data were not reported directly. Thirty-six archival observations (from 31 springs) included Ne in addition to Ar, O₂, and N₂ (and in 23 cases $\delta^{15}\text{N}_{\text{NO}_3}$). In all, we assembled 112 observations of dissolved gas concentrations (O₂, Ar, N₂) from 62 distinct spring vents, of which 58 included both $\delta^{15}\text{N}_{\text{NO}_3}$ and $\delta^{18}\text{O}_{\text{NO}_3}$, and 34 others included $\delta^{15}\text{N}_{\text{NO}_3}$ but not $\delta^{18}\text{O}_{\text{NO}_3}$. Excluding the repeated measurements of the Ichetucknee River springs in 2008–2009, our data included 166 observations of $\delta^{15}\text{N}_{\text{NO}_3}$ and O₂ and 204 total observations of $\delta^{15}\text{N}_{\text{NO}_3}$. Of the 113 springs represented in the isotope data set, 14 had 4 or more instances of concurrent measurements of both O₂ and $\delta^{15}\text{N}_{\text{NO}_3}$. Observations were drawn from springs in each major drainage in North and Central Florida (Fig. 1), and with discharges ranging from < 0.01 to $11 \text{ m}^3 \text{ s}^{-1}$.

All measurements of Ne from prior studies were determined by mass spectrometry at the Lamont-Doherty Earth Observatory Noble Gas Laboratory at Columbia University. NO₃⁻ was generally measured using the cadmium reduction method (Wood et al., 1967). N₂ and Ar from previously published studies were measured using gas chromatography. Recent (2007 and later) measurements of $\delta^{15}\text{N}_{\text{NO}_3}$ were generally conducted using the bacterial denitrifier method and included $\delta^{18}\text{O}_{\text{NO}_3}$ (Sigman et al., 2001; Casciotti et al., 2002). For data prior to 2007, $\delta^{15}\text{N}_{\text{NO}_3}$ was measured via combustion and mass spectrometry (Kendall and Grim, 1990).

2.3 Springshed characterization

To determine hydrogeologic predictors of excess air entrainment and recharge temperature, we characterized each spring by latitude, long-term mean discharge, and

Denitrification and inference of nitrogen sources in the karstic Floridan Aquifer

J. B. Heffernan et al.

Title Page

Abstract

Introduction

Conclusions

References

Tables

Figures



Back

Close

Full Screen / Esc

Printer-friendly Version

Interactive Discussion

springsheds hydrogeology as measured by aquifer vulnerability to surface contamination (Arthur et al., 2007). We collected discharge records for each spring from online databases of the United States Geological Survey National Water Information System (<http://waterdata.usgs.gov/nwis>), Southwest Florida Water Management District (<http://www.swfwmd.state.fl.us/data/>), and the St. John's River Water Management District (<http://www.sjrwmd.com/toolsGISdata/index.html>) where available, since these records were generally the most complete. Where continuous records were unavailable, we used the mean of discrete measurements from published studies and agency reports as our estimate of mean long-term discharge. Since discharge variability of Floridan Aquifer springs is extremely low, use of these more limited data to quantify long-term mean discharge is unlikely to have introduced significant error in subsequent analyses.

Where available, we used previously delineated boundaries (http://www.dep.state.fl.us/geology/programs/hydrogeology/hydro_resources.htm) to characterize springsheds hydrogeology, and to estimate springsheds size and location for un-delineated springs. The relationship between discharge and springsheds area was determined for those springs with previously delineated springsheds ($A = Q \times 134.9$, where A is springsheds area in km^2 and Q is discharge in $\text{m}^3 \text{s}^{-1}$; $n = 14$, $r = +0.79$, $p < 0.001$). For springs without a delineated springsheds, we estimated the contributing area based on their period-of-record discharge. We assumed each springsheds was circular, and estimated the springsheds orientation based on the regional drainage network such that the springsheds was located with one edge at the spring vent, and the rest up-gradient from the closest spring-fed river.

We used the Floridan Aquifer Vulnerability Assessment (FAVA) as a metric of springsheds hydrogeologic characteristics (Arthur et al., 2007). This measure quantifies the intrinsic contamination risk of the Upper Florida Aquifer (UFA) based on local hydrogeologic conditions. Point observations of aquifer properties diagnostic of rapid recharge rates (e.g., nutrient and major element chemistry, high O_2 concentrations) comprise a data set ($n = 148$) on which aquifer risk was trained using a weights-of-evidence

approach based on a variety of spatially extensive data layers. These included surface soil permeability, surface elevation, subsurface stratigraphy, presence of karst features (e.g., sinkholes) at the surface, thickness of a the intermediate aquifer system that regulates hydraulic confinement of the UFA, and the potentiometric head difference between the surface and UFA interpolated from a regional well network. Posterior contamination probabilities were classified as “less vulnerable”, “vulnerable” and “most vulnerable”. None of the springsheds in this study contained more than 3% of their area in the less vulnerable category, so we used the fraction of each springshed area delineated as most vulnerable, typically more than 75 % of the area, as a predictor in our model of excess air entrainment.

2.4 Estimation of excess air, recharge temperature, and excess N₂

We used Ne and Ar concentrations to determine recharge temperature (T_{rec}) and excess air (A_{ex}) in the subset ($n = 36$) of springs for which measurements of both gases were available. We estimated these parameters for each observation air by simultaneously solving the following equations using the Solver function in Microsoft Excel:

$$[\text{Ne}]_{\text{obs}} = k_{\text{Ne}} \cdot [\text{Ne}]_{T_{\text{rec}}} + A_{\text{ex}} \cdot P_{\text{Ne}} \quad (1)$$

$$[\text{Ar}]_{\text{obs}} = k_{\text{Ar}} \cdot [\text{Ar}]_{T_{\text{rec}}} + A_{\text{ex}} \cdot P_{\text{Ar}} \quad (2)$$

where k_{Ne} and k_{Ar} are coefficients for unit conversion of Ne and Ar from nmol kg⁻¹ (for Ne, $k = 0.02$) or μmol kg⁻¹ (for Ar, $k = 0.04$; for N₂, $k = 0.028$) to mg l⁻¹; P_{Ne} and P_{Ar} are the mass proportion of Ne (1.818×10^{-5}) and Ar (9.34×10^{-3}) in the atmosphere; and $[\text{Ne}]_{T_{\text{rec}}}$ and $[\text{Ar}]_{T_{\text{rec}}}$ are the equilibrium concentrations (Hamme and Emerson, 2004) of those gases at the recharge temperature as determined by:

$$\ln([\text{Ne}]_{T_{\text{rec}}}) = A_0 + A_1 T_S + A_2 T_S^2 + A_3 T_S^3 \quad (3)$$

$$\ln([\text{Ar}]_{T_{\text{rec}}}) = A_0 + A_1 T_S + A_2 T_S^2 + A_3 T_S^3 \quad (4)$$

where T_S is determined as:

BGD

8, 10247–10294, 2011

Denitrification and inference of nitrogen sources in the karstic Floridan Aquifer

J. B. Heffernan et al.

Title Page

Abstract

Introduction

Conclusions

References

Tables

Figures

⏪

⏩

◀

▶

Back

Close

Full Screen / Esc

Printer-friendly Version

Interactive Discussion



$$T_S = \ln \left(\frac{298.15 - T_{\text{rec}}}{298.15 + T_{\text{rec}}} \right) \quad (5)$$

and $A_0 - A_3$ are compound specific solubility constants (Table 1).

Among this set of springs with Ne data, estimated T_{rec} ranged from 15–22 °C, was overwhelmingly determined by Ar rather than Ne, and varied significantly as a function of latitude (Fig. 2a–c). The observed latitudinal variation in T_{rec} is much greater than variation in mean annual air temperature, potentially reflecting regional variation in timing of precipitation and thus temperature of infiltrating water (Schmidt et al., 2001).

A_{ex} ranged from 1.0–2.7 ml l⁻¹ and was overwhelmingly determined by Ne rather than Ar (Fig. 2a, b). Based on multiple regression analysis, mean discharge over the period of record (Q_{POR}) and springshed vulnerability were strong predictors of excess air (Fig. 2d). Palm spring, whose springshed had no land in the “most vulnerable” category and was the only value less than 50 %, was excluded from this analysis. We used this statistical relationship to estimate A_{ex} in springs for which Ne data were not available, then solved for recharge temperature in those springs using Eq. (1).

We used estimates of T_{rec} and A_{ex} , whether direct or modeled statistically, to determine N_2 concentrations that would be observed based only on those physical processes ($[N_2]_{\text{phys}}$), without any biological N_2 production. Specifically, we calculated expected N_2 concentrations using the same temperature-solubility relations described in Eqs. (1–5), but parameterized for N_2 :

$$[N_2]_{\text{phys}} = k_{N_2} \cdot [N_2]_{T_{\text{rec}}} + A_{\text{ex}} \cdot P_{N_2} \quad (6)$$

where k_{N_2} is 0.028; P_{N_2} is 0.78084 and $[N_2]_{T_{\text{rec}}}$ is the concentration of N_2 at recharge temperature as determined by:

$$\ln([N_2]_{T_{\text{rec}}}) = A_0 + A_1 T_S + A_2 T_S^2 + A_3 T_S^3 \quad (7)$$

where T_S is given in Eq. (5) and N_2 -specific values for the $A_0 - A_3$ are given in Table 1. We estimate the magnitude of denitrification ($[N_2]_{\text{den}}$) for each sampling date and time

BGD

8, 10247–10294, 2011

Denitrification and inference of nitrogen sources in the karstic Floridan Aquifer

J. B. Heffernan et al.

Title Page

Abstract

Introduction

Conclusions

References

Tables

Figures

◀

▶

◀

▶

Back

Close

Full Screen / Esc

Printer-friendly Version

Interactive Discussion



as the difference between observed N_2 concentrations and concentration predicted by physical processes:

$$[N_2]_{den} = [N_2]_{obs} - [N_2]_{phys} \quad (8)$$

To test the hypothesis that $[N_2]_{den}$ reflects the magnitude of denitrification, we used regression analyses to evaluate the relationship between $[N_2]_{den}$ and dissolved O_2 . We used both linear and logarithmic forms to predict $[N_2]_{den}$ from O_2 , for the entire data set and for the subset of observations in which A_{ex} was calculated from Ne data, rather than estimated statistically. We also analyzed the relationship between mean dissolved O_2 and mean $[N_2]_{den}$ from the subset of springs for which 3 or more observations were available.

To evaluate the relative precision and accuracy of $[N_2]_{den}$ estimates based on Ne and statistically modeled excess air, we calculated the mean and standard deviation of $[N_2]_{den}$ estimates for all springs with O_2 greater than 2 mg l^{-1} . Bias in estimates would cause divergence of the mean from zero, assuming that denitrification is negligible in these oxic springs (Bohlke et al., 2002; Green et al., 2008).

2.5 Denitrification progression and isotopic fractionation

We indirectly evaluated the relationship between denitrification progression and $\delta^{15}N_{NO_3}$ via analysis of relationships between dissolved O_2 and $\delta^{15}N_{NO_3}$ both within and across springs, reasoning that springs with lower dissolved O_2 would have greater depletion of NO_3^- pools by denitrification than springs with higher O_2 . We used both linear and logarithmic regression equations to evaluate dissolved O_2 as a predictor of $\delta^{15}N_{NO_3}$ across all observations and excluding observations from the Ichetucknee time series collected between July 2007 and November 2009. Inclusion of the entire Ichetucknee data set had a minimal influence on regression parameters, so only the results from the complete (global) data set are reported here. In addition to this global analysis, we used linear regression to evaluate relationships between dissolved O_2 and $\delta^{15}N_{NO_3}$ within springs for which 3 or more observations were available. We then used

BGD

8, 10247–10294, 2011

Denitrification and inference of nitrogen sources in the karstic Floridan Aquifer

J. B. Heffernan et al.

Title Page

Abstract

Introduction

Conclusions

References

Tables

Figures

⏪

⏩

◀

▶

Back

Close

Full Screen / Esc

Printer-friendly Version

Interactive Discussion



regression analysis to evaluate how the strength (as measured by the correlation coefficient [r]) and slope of these within-spring relationships varied as a function of mean dissolved O_2 . This analysis allowed us to evaluate the contribution of variation within and among springs to patterns seen across all observations.

We directly evaluated the relationship between denitrification progression and isotopic composition of NO_3^- by determining the fractionation coefficient ($^{15}\epsilon$) for $\delta^{15}N_{NO_3}$ from a cross-system analysis that included springs with dissolved gases from both our synoptic survey and previously reported data, and a separate analysis from the Ichetucknee Springs time series (of which most dates did not include dissolved gas measurements). These analyses required estimates of initial NO_3^- concentration ($[NO_3^-]_{init}$) at the time of recharge, which we estimated using different approaches for springs with dissolved gas data and for the Ichetucknee Springs time series. For analysis of data from the synoptic survey and previous observations that included dissolved gases, we calculated $[NO_3^-]_{init}$ as the sum of $[NO_3^-]_{obs}$ and $[N_2]_{den}$ (all in units of $mg\ NI^{-1}$). This estimate would include nitrate derived from nitrification in the vadose zone or UFA as part of $[NO_3^-]_{init}$, and assumes that denitrification is the only sink for NO_3^- (i.e., that assimilation, dissimilatory nitrate reduction to ammonium [DNRA], etc. are negligible) as indicated by concentrations of ammonium and particulate and dissolved organic nitrogen that are typically below detection limits at spring vents. Effects of these processes on $\delta^{15}N_{NO_3}$ are also assumed to be zero.

Estimates of $[NO_3^-]_{init}$ allow determination of the progression of denitrification. For each observation, we calculated the proportion of nitrate remaining from the original pool $[NO_3^-]_R$ as:

$$[NO_3^-]_R = \frac{[NO_3^-]_{obs}}{[NO_3^-]_{init}} \quad (9)$$

where $[NO_3^-]_{obs}$ is measured concentration, and $[NO_3^-]_{init}$ is the initial concentration. We used linear regression to determine the isotopic enrichment factor ($^{15}\epsilon$) for $\delta^{15}N_{NO_3}$

BGD

8, 10247–10294, 2011

Denitrification and inference of nitrogen sources in the karstic Floridan Aquifer

J. B. Heffernan et al.

Title Page

Abstract

Introduction

Conclusions

References

Tables

Figures

⏪

⏩

◀

▶

Back

Close

Full Screen / Esc

Printer-friendly Version

Interactive Discussion



(assuming Rayleigh distillation kinetics) as the slope of the relationship between $\delta^{15}\text{N}_{\text{NO}_3}$ and $\ln([\text{NO}_3^-]_{\text{R}})$ (Mariotti, 1986; Bohlke et al., 2002; Green et al., 2008). We excluded springs with NO_3^- concentrations below 0.1 mg l^{-1} (Juniper, Silver Glen, and Alexander Springs) from this analysis due to the high variability of $[\text{N}_2]_{\text{den}}$ estimates relative to these lower concentrations.

For the Ichetucknee Springs times series, we calculated $[\text{NO}_3^-]_{\text{R}}$ for each spring and sampling date by assuming that $[\text{NO}_3^-]_{\text{init}}$ for all springs was equal to $[\text{NO}_3^-]_{\text{obs}}$ in the Ichetucknee Headspring on the same date. The first assumption implicit in this analysis is that denitrification rates in the Ichetucknee Headspring are negligible. High O_2 concentrations (mean \pm SD: $4.1 \pm 0.2 \text{ mg O}_2 \text{ l}^{-1}$), low values of $[\text{N}_2]_{\text{den}}$ (which averaged 0.32 mg N l^{-1} and represented minimal ($< 30\%$) depletion of the estimated original nitrate pool), and the low and temporally stable $\delta^{15}\text{N}_{\text{NO}_3}$ (mean \pm SD: 3.6 ± 0.3 , $n = 16$) observed in the Ichetucknee Headspring all support this assumption. The second implicit assumption, that springsheds of the Ichetucknee springs receive equivalent N loads from sources with identical isotopic signatures, is based on the relative homogeneity of land use in the Ichetucknee springshed, and the predominance of fertilizer application to improved pasture as a source of N to the watershed (Katz et al., 2009). The third assumption, that variation among springs of the Ichetucknee is driven by denitrification, is supported by strong correlations between dissolved O_2 and NO_3^- within and across these systems (Fig. 3a).

To further evaluate the latter two assumptions, we used $[\text{NO}_3^-]_{\text{init}}$ and $[\text{NO}_3^-]_{\text{R}}$ values for the springs of the Ichetucknee River on three dates when $[\text{N}_2]_{\text{den}}$ estimates were available. First, we compared $[\text{NO}_3^-]_{\text{init}}$ from the Ichetucknee Headspring with the mean value of other springs on the same date. The similarity and covariation of these values (Table 2) is consistent with the assumption that all springs in the Ichetucknee System receive similar N loads. In addition, we assessed the correlation between alternative estimates of $[\text{NO}_3^-]_{\text{R}}$, namely estimates calculated from $[\text{N}_2]_{\text{den}}$ and NO_3^- from reach spring and those estimated from the differences in NO_3^- concentration between each spring and the Ichetucknee Headspring (Fig. 3a). The relationship between these

Denitrification and inference of nitrogen sources in the karstic Floridan Aquifer

J. B. Heffernan et al.

[Title Page](#)[Abstract](#)[Introduction](#)[Conclusions](#)[References](#)[Tables](#)[Figures](#)[⏪](#)[⏩](#)[◀](#)[▶](#)[Back](#)[Close](#)[Full Screen / Esc](#)[Printer-friendly Version](#)[Interactive Discussion](#)

estimates (Fig. 3b) suggests that the NO_3^- difference approach used in the analysis of the Ichetucknee Springs time series provides a more conservative estimate of the progression of denitrification than those determined using $[\text{N}_2]_{\text{den}}$, which is to be expected if denitrification has also reduced NO_3^- concentrations to a small degree in the Ichetucknee Headspring. More importantly, the correlation between these estimates is consistent with the assumption that variation in NO_3^- concentration both within and among the springs of the Ichetucknee River is driven at least in part by differences in the progression of denitrification along the flowpaths that contribute to these springs.

3 Results

For the vast majority of our observations, N_2 concentrations exceeded values predicted from recharge temperature and excess air (51 of 61 springs; 94 of 112 observations). $[\text{N}_2]_{\text{den}}$ ranged from -0.7 to $3.5 \text{ mg N}_2 \text{ l}^{-1}$ (median: $0.67 \text{ mg N}_2 \text{ l}^{-1}$; mean \pm SD: $0.82 \pm 0.83 \text{ mg N}_2 \text{ l}^{-1}$), and was inversely correlated with O_2 (Fig. 4a). Among springs with Ne data, this relationship exhibited a sharp break at ca. $2 \text{ mg O}_2 \text{ l}^{-1}$, above which $[\text{N}_2]_{\text{den}}$ averaged $0.003 \text{ mg N}_2 \text{ l}^{-1}$ (± 0.32 ; 2 SE); below $2 \text{ mg O}_2 \text{ l}^{-1}$, $[\text{N}_2]_{\text{den}}$ averaged $1.5 \text{ mg N}_2 \text{ l}^{-1}$ (± 0.33 ; 2 SE). Among all springs, this threshold was less distinct, and a linear relationships was a better fit than a logarithmic relationship.

Among the 16 springs with 3 or more observations (max = 5) of $[\text{N}_2]_{\text{den}}$ in our data set, over 90 % of the total variation in $[\text{N}_2]_{\text{den}}$ occurred among rather than within springs (ANOVA; Fig. 5a, Table 3). Standard deviations within springs for $[\text{N}_2]_{\text{den}}$ ranged from 0.05 to $0.65 \text{ mg N}_2 \text{ l}^{-1}$ and averaged 0.31 mg l^{-1} . Among the same set of springs, over 88 % of total variation in $[\text{NO}_3^-]_{\text{R}}$ occurred among springs (ANOVA; Fig. 5b, Table 3). Standard deviations within springs for $[\text{NO}_3^-]_{\text{R}}$ ranged from $< 1 \%$ to 29% and averaged 10.4% . For both variables, variation among springs was strongly correlated with mean dissolved O_2 from the same set of observations. However, variation in $[\text{N}_2]_{\text{den}}$ and $[\text{NO}_3^-]_{\text{R}}$ within springs was not correlated with variation within springs in dissolved O_2 , presumably due to low sample size.

Denitrification and inference of nitrogen sources in the karstic Floridan Aquifer

J. B. Heffernan et al.

Title Page

Abstract

Introduction

Conclusions

References

Tables

Figures



Back

Close

Full Screen / Esc

Printer-friendly Version

Interactive Discussion



Fluxes of $[N_2]_{den}$ from UFA springs were comparable to but uncorrelated with those of NO_3^- , and the proportion of NO_3^- removed by denitrification varied among springs from 0 to as high as 97 % (mean \pm 2 SE: 34 ± 9 %) among springs. Denitrification removed more than 75 % of N inputs in 8 of 61 springs, and more than 50 % in 20 of 61.

Compared to this spatial heterogeneity, temporal variation in $[N_2]_{den}$ among springs was low (Fig. 5, Table 3). We estimate that denitrification reduced total flow-weighted NO_3^- flux from sampled UFA springs by 32 %, with uncertainty in this estimate primarily driven by the representativeness of our sample of springs. Volumetric denitrification rates calculated from N_{2den} and apparent He water age (Green et al., 2008) averaged of $2.75 \mu\text{mol m}^{-3} \text{d}^{-1}$. Aggregate (i.e. flow-weighted) areal denitrification for all springsheds was $1.22 \text{ kg ha}^{-1} \text{ yr}^{-1}$, with ca. 20 % of springsheds exceeding the estimated global average for groundwater denitrification ($3.49 \text{ kg ha}^{-1} \text{ yr}^{-1}$).

Across 292 observations from 103 springs, $\delta^{15}N_{NO_3}$ ranged from -0.3 to 23.9 ‰, was inversely correlated with O_2 , and varied more among low- O_2 ($< 2 \text{ mg l}^{-1}$) than high- O_2 springs (Fig. 4b). Among springs with 3 or more observations (max = 18) of $\delta^{15}N_{NO_3}$, 86 % of the total variation in $\delta^{15}N_{NO_3}$ in our data set was accounted for by variation among springs (ANOVA; Fig. 6, Table 3). Standard deviations of $\delta^{15}N_{NO_3}$ within individual springs ranged from 0.1 to 5.2‰ and averaged 1.4‰. Unlike $[N_2]_{den}$ and $[NO_3^-]_R$, variation within springs in $\delta^{15}N_{NO_3}$ was also correlated with variation in dissolved O_2 , particularly for low O_2 springs, which had strong, steeply negative relationships between temporal variation in $\delta^{15}N_{NO_3}$ and dissolved O_2 (Fig. 7).

The progression of denitrification, as indicated by $[NO_3^-]_R$, was a strong predictor of $\delta^{15}N_{NO_3}$ in both the synoptic survey and Ichetucknee River time series (Fig. 8a, b). Estimated fractionation coefficients were similar between the Ichetucknee River time series and the synoptic survey, particularly when only springs with Ne data were considered. Both data sets also exhibited strong relationships between nitrate $\delta^{15}N_{NO_3}$ and $\delta^{18}O_{NO_3}$; however, the slope of this relationship differed substantially between the synoptic cross-system survey (1.8 : 1) and the Ichetucknee River time series (1 : 1;

Denitrification and inference of nitrogen sources in the karstic Floridan Aquifer

J. B. Heffernan et al.

[Title Page](#)[Abstract](#)[Introduction](#)[Conclusions](#)[References](#)[Tables](#)[Figures](#)[⏪](#)[⏩](#)[◀](#)[▶](#)[Back](#)[Close](#)[Full Screen / Esc](#)[Printer-friendly Version](#)[Interactive Discussion](#)

Fig. 8c,d). For the Ichetucknee River springs, relationships between $\delta^{15}\text{N}_{\text{NO}_3}$ and $\delta^{18}\text{O}_{\text{NO}_3}$ within sampling dates were consistently near unity (Table 4).

Estimates of source $\delta^{15}\text{N}_{\text{NO}_3}$ from denitrification progression and observed $\delta^{15}\text{N}_{\text{NO}_3}$ values suggest that denitrification alters $\delta^{15}\text{N}_{\text{NO}_3}$ at the regional scale. Among springs with estimates of $\text{N}_{2\text{den}}$, nearly 20% of observed $\delta^{15}\text{N}_{\text{NO}_3}$ values were greater than 9‰, and more than 50% were greater than 6‰ (Fig. 9c), values used in Florida and elsewhere to delineate inorganic and organic sources and mixtures thereof (Katz, 2004; Bohlke, 2002). Estimated $\delta^{15}\text{N}_{\text{NO}_3}$ of source N (Fig. 9d) were much lower, with only 5.5% of observations estimated to have original source $\delta^{15}\text{N}_{\text{NO}_3}$ greater than 9‰, and 26% greater than 6‰. Within the Ichetucknee River time series, differences between the distribution of observed and estimated source $\delta^{15}\text{N}_{\text{NO}_3}$ were even greater (Fig. 9e,f). $\delta^{15}\text{N}_{\text{NO}_3}$ values greater than 6‰ were rare among springs with DO greater than 3 mg l^{-1} (Fig. 9a, b). In all three data sets, estimated source $\delta^{15}\text{N}_{\text{NO}_3}$ was both lower on average and much less variable than spring water.

4 Discussion

4.1 Evidence for denitrification in the Upper Floridan Aquifer

Relationships among denitrification-derived N_2 ($[\text{N}_2]_{\text{den}}$), O_2 , and $\delta^{15}\text{N}_{\text{NO}_3}$ and $\delta^{18}\text{O}_{\text{NO}_3}$ all support the widespread occurrence and significance of denitrification in the Upper Floridan Aquifer. In springs with low dissolved O_2 , N_2 concentrations exceeded those predicted by physical processes (as measured by noble gas tracers), but closely matched those predictions in high O_2 springs (Fig. 4a). The negative relationship between O_2 concentrations and $[\text{N}_2]_{\text{den}}$ provides clear evidence of both the accuracy and precision of our approach and the occurrence of denitrification in hypoxic portions of the UFA. Like $[\text{N}_2]_{\text{den}}$, $\delta^{15}\text{N}_{\text{NO}_3}$ was inversely related to dissolved O_2 , with

Denitrification and inference of nitrogen sources in the karstic Floridan Aquifer

J. B. Heffernan et al.

Title Page

Abstract

Introduction

Conclusions

References

Tables

Figures

⏪

⏩

◀

▶

Back

Close

Full Screen / Esc

Printer-friendly Version

Interactive Discussion



high values observed almost exclusively below $2 \text{ mg O}_2 \text{ l}^{-1}$. $\delta^{15}\text{N}_{\text{NO}_3}$ values for springs with O_2 greater than 2 mg l^{-1} were generally consistent with nitrogen derived from predominantly but not exclusively inorganic sources (Fig. 4b). Relationships between the progression of denitrification and $\delta^{15}\text{N}_{\text{NO}_3}$ (Fig. 8a,c) support both the inference of denitrification in the Floridan Aquifer and the hypothesis that variation in isotopic signatures is primarily driven by denitrification rather differential contribution from organic and inorganic sources. Fractionation coefficients ($^{15}\epsilon$) derived from both the synoptic survey and the Ichetucknee River springs are within the lower range of values reported for other aquifers (Mariotti, 1986; Bohlke et al., 2002; Green et al., 2008), and other marine and freshwater environments (Sigman et al., 2005; Granger et al., 2008), but lower than some recent experimental values (Knoller et al., 2011). These relatively low values may indicate diffusion-constrained NO_3^- limitation of denitrification in the UFA (Sebilo et al., 2003).

Covariation between $\delta^{15}\text{N}_{\text{NO}_3}$ and $\delta^{18}\text{O}_{\text{NO}_3}$ confirms the inference of denitrification in the UFA and its influence on isotopic composition of NO_3^- at the regional scale. Across springs and over time within the springs of the Ichetucknee River, we observed strong relationships between $\delta^{15}\text{N}_{\text{NO}_3}$ and $\delta^{18}\text{O}_{\text{NO}_3}$, although the slopes of these relationships differed between the synoptic survey and the temporally intensive study of the Ichetucknee system. The 1 : 1.7 relationship across sites (Fig. 8b) is consistent with theoretical and empirical studies showing 1 : 2 enrichment by denitrification (Lehmann et al., 2003; Aravena and Robertson, 1998). In contrast, covariation within the springs of the Ichetucknee River exhibited slopes near 1 : 1 on each date and across all dates (Fig. 8d, Table 4). A recent study of isotope dynamics within the Ichetucknee River itself yielded similar 1 : 1 fractionation ratio for $^{18}\text{O} : ^{15}\text{N}$ associated with denitrification (Cohen et al., 2011). These relationships, both from studies with independently-constrained, direct estimates of denitrification, are similar to fractionation ratios obtained from laboratory experiments (Granger et al., 2008) and marine systems (Sigman et al., 2005). The divergence of fractionation during denitrification between freshwater and marine ecosystems has been attributed to taxonomic

BGD

8, 10247–10294, 2011

Denitrification and inference of nitrogen sources in the karstic Floridan Aquifer

J. B. Heffernan et al.

Title Page

Abstract

Introduction

Conclusions

References

Tables

Figures

◀

▶

◀

▶

Back

Close

Full Screen / Esc

Printer-friendly Version

Interactive Discussion



or environmental differences between these systems, but our observations suggest factors varying among watersheds can alter these relationships. Regardless of these differences, strong covariation among $\delta^{15}\text{N}_{\text{NO}_3}$ and $\delta^{18}\text{O}_{\text{NO}_3}$ provide additional evidence that denitrification drives variation in nitrate isotopic composition in the Floridan Aquifer.

Temporal patterns within individual springs provide a final line of support for denitrification as a driver of NO_3^- concentrations and isotopic composition. Within the springs of the Ichetucknee River, O_2 concentrations were positively correlated with NO_3^- concentrations (Fig. 3a). Across all springs, O_2 concentrations were negatively correlated with $\delta^{15}\text{N}_{\text{NO}_3}$, and negative relationships were also observed over time within low- O_2 springs. The apparent absence of O_2 -driven variation within springs for $[\text{N}_2]_{\text{den}}$ and $[\text{NO}_3^-]_{\text{R}}$ is most likely attributable to low power in our data set for those variables and lower precision in estimates of $[\text{N}_2]_{\text{den}}$ (and thus $[\text{NO}_3^-]_{\text{R}}$) than for $\delta^{15}\text{N}_{\text{NO}_3}$. Given the strength of observed relationships across springs between denitrification progression and $\delta^{15}\text{N}_{\text{NO}_3}$, the most likely explanation for within-spring $\delta^{15}\text{N}_{\text{NO}_3}$ - O_2 relationships (Fig. 7) is that variation in both O_2 and $\delta^{15}\text{N}_{\text{NO}_3}$ reflect differential contributions of young, oxic groundwater, the isotopic signatures of which are unlikely to have been altered by denitrification, and older, anoxic groundwater, for which depletion nitrate by denitrification has produced elevated values of $\delta^{15}\text{N}_{\text{NO}_3}$. A plausible alternative hypothesis is that O_2 - $\delta^{15}\text{N}_{\text{NO}_3}$ relationships reflect the concurrent influence of human- or animal-derived effluent on dissolved O_2 (via increased BOD) and $\delta^{15}\text{N}_{\text{NO}_3}$. However, if coincident BOD and $\delta^{15}\text{N}$ -enriched NO_3^- inputs were responsible for these patterns, then high- O_2 springs would exhibit covariation between O_2 and $\delta^{15}\text{N}_{\text{NO}_3}$, as is observed in low- O_2 springs. Thus, while alternative explanations might plausibly explain some of the pairwise correlations observed in this study (e.g. organic waste inputs as a driver of both O_2 and $\delta^{15}\text{N}_{\text{NO}_3}$), the convergence of multiple lines of evidence clearly indicates that denitrification is a significant process in the UFA, as both a sink for N inputs and as a driver of variation in isotope signatures.

Denitrification and inference of nitrogen sources in the karstic Floridan Aquifer

J. B. Heffernan et al.

[Title Page](#)[Abstract](#)[Introduction](#)[Conclusions](#)[References](#)[Tables](#)[Figures](#)[⏪](#)[⏩](#)[◀](#)[▶](#)[Back](#)[Close](#)[Full Screen / Esc](#)[Printer-friendly Version](#)[Interactive Discussion](#)

4.2 Magnitude and mechanisms of nitrate reduction

An important feature of this study is that springs integrate upgradient N transformations over considerable spatial domains and over the entire duration of water residence in the subsurface. In combination with the large spatial extent of our study springs, this feature of springs enables relatively simple scaling of groundwater denitrification to springshed and regional scales. Studies of aquifer denitrification generally address denitrification along individual flowpaths with relatively small spatial footprints, and as such may not reflect the distribution of rates or residence times within the larger aquifer.

At the scale of the UFA, denitrification appears to be a significant sink for N leaching to the Upper Floridan Aquifer, removing approximately 32% of the total (flow-weighted) N discharging from sampled springs. Average volumetric rates derived from $[N_2]_{den}$ were toward the low end of values obtained from direct measurement of N_2 , but were within the range reported for agriculturally enriched aquifers (Green et al., 2008). Nonetheless, aggregate areal rates of denitrification ($122 \text{ kg km}^2 \text{ yr}^{-1}$) are comparable to the estimated global average for aquifer denitrification (Seitzinger et al., 2006). These averages, however, integrate a high degree of variation among springs. Average areal rates for individual springs ranged from less than 0 to as high as $5300 \text{ kg km}^2 \text{ yr}^{-1}$, and the depletion of NO_3^- load from 0 to more than 97%. Thus within the Floridan Aquifer we observe variation in denitrification comparable to that observed globally (Seitzinger et al., 2006). Significant spatial heterogeneity of denitrification has been observed in other aquifers, but none to our knowledge have measured denitrification directly over the spatial and temporal extent found in this study. Our results suggest that measurements along individual groundwater flowpaths are unlikely to be applicable to entire regional aquifer systems.

The occurrence and significance of denitrification in the organic-matter-poor Floridan Aquifer is superficially surprising, given the importance of organic matter supply as a constraint on denitrification across diverse ecosystem types. However, several recent studies have found isotopic evidence for denitrification in karstic aquifers, including

BGD

8, 10247–10294, 2011

Denitrification and inference of nitrogen sources in the karstic Floridan Aquifer

J. B. Heffernan et al.

Title Page

Abstract

Introduction

Conclusions

References

Tables

Figures

⏪

⏩

◀

▶

Back

Close

Full Screen / Esc

Printer-friendly Version

Interactive Discussion

**Denitrification and
inference of nitrogen
sources in the karstic
Floridan Aquifer**J. B. Heffernan et al.

[Title Page](#)[Abstract](#)[Introduction](#)[Conclusions](#)[References](#)[Tables](#)[Figures](#)[Back](#)[Close](#)[Full Screen / Esc](#)[Printer-friendly Version](#)[Interactive Discussion](#)

those in Southwestern Illinois, USA (Panno et al., 2001), Southern Germany (Einsiedl and Mayer, 2006), and the Floridan Aquifer (Albertin et al., 2011). One feature of karst aquifers that may facilitate denitrification is large difference in hydraulic conductivity, and thus water age and chemistry, between karstic aquifer matrices and conduits. Mc-
5 Callum et al. (2008) showed that mixing of groundwaters of different ages, NO_3^- concentrations, and redox potentials can promote aquifer denitrification, and such oxic-anoxic interfaces are widely recognized as locations of significant biogeochemical reactivity in surface waters (Dahm et al., 1998). Similar phenomena might be occurring throughout
10 the considerable surface area of the conduit-matrix interface in karstic systems, and its occurrence and distribution might vary sufficiently to generate the observed differences in denitrification among UFA springs.

The source and character of electron donors that fuel nitrate reduction in the UFA are not known. Low DOC concentrations in UFA springs imply that denitrification is fueled by some other source, but availability of labile DOC is likely to be higher in
15 water entering the aquifer than in water discharging from springs. Runoff entering sinkholes provide one pathway for relatively labile carbon to enter karstic aquifers, in either dissolved or particulate form. In some cases backflow from C-rich surface waters influences the chemistry of springs discharge (Gulley et al., 2011), and anthropogenic carbon from septic, municipal, or agricultural waste might also provide labile C to the
20 UFA. The importance of electron donors other than organic C for denitrification in the UFA remains unclear, but has been demonstrated through correlational and experimental studies in other aquifers, including some karstic systems. Although the carbonate Floridan Aquifer matrix itself is generally poor in minerals that might serve as terminal electron donors, Florida springs exhibit significant variation in mineral chemistry (Scott et al., 2004), and many springsheds include the clay-rich Hawthorn Formation (Wicks and Herman, 1994). If such alternative electron donors drive variation in denitrifica-
25 tion among UFA springs, then concentrations of solutes such as Fe or SO_4^- should be correlated with denitrification. The role of different nitrate reduction pathways, as well as broader drivers such as hydrogeology, geochemistry, and land use as factors

that influence denitrification in the UFA, are beyond the scope of this paper, but clearly worthy of further investigation.

4.3 Uncertainty in estimates of denitrification

Use of dual noble gas tracers (Ne, Ar) to estimate recharge temperature and excess air produced estimates that were more precise and more accurate than those derived from statistical modeling of excess air. Among springs with O_2 greater than 2 mg l^{-1} and thus presumably negligible denitrification, $[N_2]_{\text{den}}$ estimates based on dual tracers averaged $0.003 \text{ mg N l}^{-1}$ ($0.1 \text{ } \mu\text{mol N}_2 \text{ l}^{-1}$) with a standard deviation of 0.32 mg N l^{-1} ($11.6 \text{ } \mu\text{mol N}_2 \text{ l}^{-1}$). For observations from high O_2 springs where Ne data were unavailable, $[N_2]_{\text{den}}$ estimates based on statistically modeled excess air averaged $0.32 \text{ mg N}_2 \text{ l}^{-1}$ ($11.6 \text{ } \mu\text{mol N}_2 \text{ l}^{-1}$) with a standard deviation of $16.8 \text{ } \mu\text{mol N}_2 \text{ l}^{-1}$. For $[N_2]_{\text{den}}$, $[\text{NO}_3^-]_{\text{R}}$, and $\delta^{15}\text{N}_{\text{NO}_3}$, spatial variation among springs was large compared to temporal variation within springs.

The stronger relationship between denitrification progression and $\delta^{15}\text{N}_{\text{NO}_3}$ for springs with Ne data vs. all springs provides additional evidence for greater precision of these estimates. Greater bias and lower precision of these estimates most likely reflects the variability of excess air entrainment over time among springs, but may also reflect introduction of excess air during sampling, an artifact for which our statistical approach does not account. Nonetheless, uncertainty of our direct and statistically-derived estimates of denitrification compare favorably with bias ($5 \text{ } \mu\text{mol N}_2 \text{ l}^{-1}$) and precision ($\text{SD} = 22 \text{ } \mu\text{mol N}_2 \text{ l}^{-1}$) in a previous study of denitrification in agricultural aquifers, in which limited spatial extent permitted assumptions of constant recharge temperature within regions, and calculation of excess air from Ar concentrations (Green et al., 2008). The relatively high precision and minimal bias of $[N_2]_{\text{den}}$ estimates in this study illustrate both the value of dual isotope tracers and the utility of statistical modeling of physical processes where direct measurements are unavailable. Similar approaches will likely be necessary and useful in evaluating the spatial heterogeneity of denitrification in other aquifers.

Denitrification and inference of nitrogen sources in the karstic Floridan Aquifer

J. B. Heffernan et al.

Title Page

Abstract

Introduction

Conclusions

References

Tables

Figures



Back

Close

Full Screen / Esc

Printer-friendly Version

Interactive Discussion



One important implication of the low within-spring variance in $[N_2]_{den}$ and $[NO_3^-]_R$ (Fig. 5) is that uncertainty in our regional estimate of the magnitude of denitrification and its effect on N loads delivered to surface waters is largely influenced by whether or not sampled springs are representative, rather than by uncertainty of estimates within sampled springs. Our population of springs almost certainly overrepresents large springs, since we include more than half of the first magnitude springs in Northern Florida. It is unclear whether our study oversampled N rich or N poor springs, since the distribution of NO_3^- concentrations in small springs is not known. A second source of uncertainty is the magnitude of diffuse groundwater discharge from the UFA, and the comparability of the chemistry of this discharge to that of springs. On an areal basis, we have almost certainly underestimated denitrification in the UFA because estimates only include discharge from one spring over the area of its springshed. Incorporation of excess N_2 fluxes from springs with overlapping springshed and from diffuse groundwater efflux would increase areal estimates of denitrification, but the magnitude of this bias is not known. It is also unclear whether these unmeasured hydrologic flowpaths have excess N_2 concentrations comparable to those of the measured springs. In light of these uncertainties, our estimate of denitrification in the Floridan Aquifer should be viewed as a first approximation.

4.4 Implications for N source inference

Concurrent measurements of dissolved gases, nitrate concentrations and isotopes enabled direct estimation of the absolute magnitude and relative progression of denitrification, and their relationship to $\delta^{15}N_{NO_3}$ enrichment (Fig. 8). The strong negative relationships between the size of residual nitrate pools and $\delta^{15}N_{NO_3}$ not only provide evidence for the occurrence of denitrification, but also clearly indicate that denitrification exerts a significant influence on nitrate isotopic composition in the UFA (particularly where dissolved O_2 concentrations are $< 2 \text{ mg l}^{-1}$). These relationships, in turn, allowed us to estimate the isotopic composition of the original source NO_3^- for each

BGD

8, 10247–10294, 2011

Denitrification and inference of nitrogen sources in the karstic Floridan Aquifer

J. B. Heffernan et al.

Title Page

Abstract

Introduction

Conclusions

References

Tables

Figures



Back

Close

Full Screen / Esc

Printer-friendly Version

Interactive Discussion



spring. These estimates suggest that $\delta^{15}\text{N}_{\text{NO}_3}$ of nitrate discharging from UFA springs may in some cases differ substantially from the isotopic signature of the original N source.

Observed variation in $\delta^{15}\text{N}_{\text{NO}_3}$ among UFA springs was considerable, ranging from values near zero to more than 20‰. $\delta^{15}\text{N}_{\text{NO}_3}$ distributions for springs with denitrification estimates and within the Ichetucknee River springs were similar to that of all springs, but the former was biased towards heavier $\delta^{15}\text{N}_{\text{NO}_3}$ values, and the latter had a smaller range of values and relatively fewer high values. Nonetheless, the similarity of these distributions suggests that interpretation of our source estimates should be applicable to the broader population of springs. In all three data sets, the largest subset of springs had $\delta^{15}\text{N}_{\text{NO}_3}$ less than 6‰, but in each case more than one-third of springs had $\delta^{15}\text{N}_{\text{NO}_3}$ greater than 6‰. Observed values in springs with $\text{N}_{2\text{-den}}$ estimates were higher than the larger data set that included all springs; more than 50 % of $\text{N}_{2\text{-den}}$ springs had $\delta^{15}\text{N}_{\text{NO}_3}$ values greater than 6‰.

Estimated source $\delta^{15}\text{N}_{\text{NO}_3}$ signatures from springs with dissolved gas data and from the Ichetucknee River springs time series had distributions that differed from observed values in two important respects. First, mean and median values for estimated sources were lower by ca. 2‰ and 1.5‰, respectively. Second, the frequency of extremely high $\delta^{15}\text{N}_{\text{NO}_3}$ values was much lower. Significantly, these estimated source values had distributions similar to those of all springs with $\text{O}_2 > 3 \text{ mg l}^{-1}$, where denitrification is presumably negligible. Together, these observations strongly suggest that most $\delta^{15}\text{N}_{\text{NO}_3}$ values in UFA springs somewhat overestimate the contribution of organic sources, and in particular that very high values overwhelmingly reflect fractionation resulting from nitrate removal by denitrification, rather than large contributions from organic N sources.

To date, denitrification has largely been assumed to be negligible in the Upper Floridan Aquifer, and as a result, elevated $\delta^{15}\text{N}_{\text{NO}_3}$ values have been interpreted as indicating a significant contribution from organic sources. Despite mass balance studies indicating fertilizer application as the dominant N source to springsheds, policy and

Denitrification and inference of nitrogen sources in the karstic Floridan Aquifer

J. B. Heffernan et al.

Title Page

Abstract

Introduction

Conclusions

References

Tables

Figures

⏪

⏩

◀

▶

Back

Close

Full Screen / Esc

Printer-friendly Version

Interactive Discussion

management efforts have largely focused on reducing N inputs from septic tanks, and agricultural and municipal waste (Loper et al., 2005; Dederkorkut, 2005; Mattson et al., 2006), largely on the basis of enriched $\delta^{15}\text{N}_{\text{NO}_3}$ signatures. Our data suggest that interpretation of $\delta^{15}\text{N}_{\text{NO}_3}$ values must account for fractionating N transformations within the aquifer.

As one example of the effects of fractionation, Wekiwa Springs, near Orlando FL, has a heavily urbanized catchment and consistently elevated $\delta^{15}\text{N}_{\text{NO}_3}$ values (mean of 4 observations from 2001–2010: 11.5 ± 3.1 ‰), which would initially suggest that elevated NO_3^- concentrations in that system are primarily derived from organic sources.

However, $\delta^{18}\text{O}_{\text{NO}_3}$ are also highly enriched (12.4‰), and measurements of $\text{N}_{2\text{-den}}$ are consistently high (mean of 4 observations from 2001–2010: 3.1 ± 0.4 mg $\text{N}_2 \text{ l}^{-1}$). We estimate that that denitrification within the aquifer typically removes ca. 75% of NO_3^- before discharge from Wekiwa Springs, and that the original source of nitrate in Wekiwa Springs had a $\delta^{15}\text{N}_{\text{NO}_3}$ value ca. 6.3‰. While individual estimates of source $\delta^{15}\text{N}_{\text{NO}_3}$ should be viewed with caution, it seems likely that despite its urban setting, N enrichment of Wekiwa Springs is due primarily to inorganic fertilizers, with contributions from organic sources. In contrast, Wakulla Springs, near Tallahassee, FL, has somewhat enriched $\delta^{15}\text{N}_{\text{NO}_3}$ (6.4–7.9‰) but no excess N_2 . Moreover, hydrologic tracer studies have demonstrated direct connections between the Tallahassee municipal waste spray-field and Wakulla Springs (Kincaid et al., 2005). Thus, it seems safe to conclude that elevated $\delta^{15}\text{N}_{\text{NO}_3}$ values in Wakulla Springs do in fact reflect the isotopic signature of N sources, which include significant contributions from organic sources. However, our observations suggest that this is the exception rather than the rule. Absent direct evidence for substantial organic sources for a specific spring, efforts to reduce N loading to the UFA should focus on fertilizer inputs.

BGD

8, 10247–10294, 2011

Denitrification and inference of nitrogen sources in the karstic Floridan Aquifer

J. B. Heffernan et al.

Title Page

Abstract

Introduction

Conclusions

References

Tables

Figures

⏪

⏩

◀

▶

Back

Close

Full Screen / Esc

Printer-friendly Version

Interactive Discussion

5 Conclusions

The surprising importance of denitrification for N fluxes and isotopic composition in the UFA has important implications both for management of North Florida landscapes and for broader understanding of groundwater denitrification. Methodologically, this study illustrates the value of multiple lines of inference for assessing denitrification, which are strengthened by direct estimates of the physical processes that influence N₂ concentration using multiple tracers. Significant spatial and temporal variability of denitrification within the UFA suggests that improving regional and global estimates of denitrification will require more extensive measurements in other aquifers. The variability of denitrification in the Floridan Aquifer has implications not only for regional estimates of N removal, but also for values and variability of isotopic signatures of residual nitrate pools at the regional scale. Accurate assessments of the contribution of various sources of N enrichment, in North Florida and elsewhere, must account for the influence of denitrification on N isotope ratios.

Acknowledgements. The authors wish to thank L. Kohnak and C. Foster for their help with field sampling, and S. Walsh, S. Kroenig, and L. Knowles for sharing data. This research was supported by grants from the St. Johns River Water Management District, the Southwest Florida Water Management District, the Three Rivers Foundation, and the National Science Foundation (EAR 0838390). The conclusions in this paper are those of the authors and do not necessarily reflect the views or policy of any state or federal agency.

References

- Albertin, A. R., Sickman, J. O., Pinowska, A., and Stevenson, R. J.: Identification of nitrogen sources and transformations within karst springs using isotope tracers of nitrogen, Biogeochemistry, in press, doi:10.1007/s10533-011-9592-0, 2011.
- APHA, AWWA, and WEF: Standard methods for the examination of water and wastewater, 21st edn., American Public Health Association, Washington, DC, 2005.

BGD

8, 10247–10294, 2011

Denitrification and inference of nitrogen sources in the karstic Floridan Aquifer

J. B. Heffernan et al.

Title Page

Abstract

Introduction

Conclusions

References

Tables

Figures



Back

Close

Full Screen / Esc

Printer-friendly Version

Interactive Discussion



Denitrification and inference of nitrogen sources in the karstic Floridan Aquifer

J. B. Heffernan et al.

Title Page

Abstract

Introduction

Conclusions

References

Tables

Figures

⏪

⏩

◀

▶

Back

Close

Full Screen / Esc

Printer-friendly Version

Interactive Discussion



- Aravena, R. and Robertson, W. D.: Use of multiple isotope tracers to evaluate denitrification in ground water: study of nitrate from a large-flux septic system plume, *Ground Water*, 36, 975–982, 1998.
- Arthur, J. D., Wood, H. A. R., Baker, A. E., Cichon, J. R., and Raines, G. L.: Development and implementation of a bayesian-based aquifer vulnerability assessment in florida. *Nat. Resour. Res.*, 16, 93–107, 2007.
- Bedard-Haughn, A., van Groenigen, J. W., and van Kessel, C.: Tracing $n-15$ through landscapes: potential uses and precautions, *J. Hydrol.*, 272, 175–190, 2003.
- Bohlke, J. K., Wanty, R., Tuttle, M., Delin, G., and Landon, M.: Denitrification in the recharge area and discharge area of a transient agricultural nitrate plume in a glacial outwash sand aquifer, Minnesota, *Water Resour. Res.*, 38, 26 pp., doi:10.1029/2001WR000663, 2002.
- Bonn, M. A.: Visitor profiles, economic impacts and recreational aesthetic values associated with eight priority Florida springs located in the St. Johns River Water Management District, St. Johns River Water Management District, Palatka, FL, 136 pp., 2004.
- Bonn, M. A. and Bell, F. W.: Economic impact of selected Florida springs on surrounding local areas, Florida Department of Environmental Protection, Tallahassee, Florida, USA., 99 pp., 2003.
- Burgin, A. J. and Hamilton, S. K.: Have we overemphasized the role of denitrification in aquatic ecosystems? A review of nitrate removal pathways, *Front. Ecol. Environ.*, 5, 89–96, 2007.
- Burns, D. A., Boyer, E. W., Elliott, E. M., and Kendall, C.: Sources and transformations of nitrate from streams draining varying land uses: evidence from dual isotope analysis, *J. Environ. Qual.*, 38, 1149–1159, doi:10.2134/jeq2008.0371, 2009.
- Casciotti, K. L., Sigman, D. M., Hastings, M. G., Bohlke, J. K., and Hilkert, A.: Measurement of the oxygen isotopic composition of nitrate in seawater and freshwater using the denitrifier method, *Anal. Chem.*, 74, 4905–4912, doi:10.1021/ac020113w, 2002.
- Castro, M. C., Hall, C. M., Patriarche, D., Goblet, P., and Ellis, B. R.: A new noble gas paleoclimate record in Texas – basic assumptions revisited, *Earth Planet. Sci. Lett.*, 257, 170–187, doi:10.1016/j.epsl.2007.02.030, 2007.
- Cey, B. D., Hudson, G. B., Moran, J. E., and Scanlon, B. R.: Evaluation of noble gas recharge temperatures in a shallow unconfined aquifer, *Ground Water*, 47, 646–659, doi:10.1111/j.1745-6584.2009.00562.x, 2009.
- Chapelle, F. H., McMahon, P. B., Dubrovsky, N. M., Fujii, R. F., Oaksford, E. T., and Vroblesky, D. A.: Deducing the distribution of terminal electron-accepting processes

Denitrification and inference of nitrogen sources in the karstic Floridan Aquifer

J. B. Heffernan et al.

[Title Page](#)

[Abstract](#)

[Introduction](#)

[Conclusions](#)

[References](#)

[Tables](#)

[Figures](#)

[⏪](#)

[⏩](#)

[◀](#)

[▶](#)

[Back](#)

[Close](#)

[Full Screen / Esc](#)

[Printer-friendly Version](#)

[Interactive Discussion](#)

- in hydrologically diverse groundwater systems, *Water Resour. Res.*, 31, 359–371, doi:10.1029/94wr02525, 1995.
- Chasar, L., Katz, B. G., and Griffin, D.: Evaluation of nitrate sources in springs of the Santa Fe River basin using natural tracers: geochemical, specific microbiological, and multiple stable isotopic indicators, Alachua County Environmental Protection Department, Gainesville, FL, 2005.
- Cohen, M., Heffernan, J., Albertin, A., and Martin, J.: Inference of riverine nitrogen processing from longitudinal and diel variation in dual nitrate isotopes, *J. Geophys. Res. Biogeosci.*, in review, 2011.
- Dahm, C. N., Grimm, N. B., Marmonier, P., Valett, H. M., and Vervier, P.: Nutrient dynamics at the interface between surface waters and groundwaters, *Freshwater Biol.*, 40, 427–451, 1998.
- David, M. B., Wall, L. G., Royer, T. V., and Tank, J. L.: Denitrification and the nitrogen budget of a reservoir in an agricultural landscape, *Ecol. Appl.*, 16, 2177–2190, 2006.
- Davidson, E. A. and Seitzinger, S.: The enigma of progress in denitrification research, *Ecol. Appl.*, 16, 2057–2063, 2006.
- Dederkorkut, A.: Suwanee River partnership: representation instead of regulation, in: *Adaptive Governance and Water Conflict: New Institutions for Collaborative Planning*, edited by: Scholz, J. and Stiftel, B., Resources for the Future Press, Washington, DC, 25–39, 2005.
- Duarte, C. M., Prairie, Y. T., Frazer, T. K., Hoyer, M. V., Notestein, S. K., Martínez, R., Dorsett, A., and Canfield, D. E.: Rapid accretion of dissolved organic carbon in the springs of Florida: the most organic-poor natural waters, *Biogeosciences*, 7, 4051–4057, doi:10.5194/bg-7-4051-2010, 2010.
- Einsiedl, F. and Mayer, B.: Hydrodynamic and microbial processes controlling nitrate in a fissured-porous karst aquifer of the Franconian Alb, Southern Germany, *Environ. Sci. Technol.*, 40, 6697–6702, doi:10.1021/es061129x, 2006.
- Eyre, B. D., Rysgaard, S., Dalsgaard, T., and Christensen, P. B.: Comparison of isotope pairing and N-2 : Ar methods for measuring sediment-denitrification-assumptions, modifications, and implications, *Estuaries*, 25, 1077–1087, 2002.
- Feast, N. A., Hiscock, K. M., Dennis, P. F., and Andrews, J. N.: Nitrogen isotope hydrochemistry and denitrification within the chalk aquifer system of North Norfolk, UK, *J. Hydrol.*, 211, 233–252, 1998.
- Fogg, G. E., Rolston, D. E., Decker, D. L., Louie, D. T., and Grismer, M. E.: Spatial variation in

Denitrification and inference of nitrogen sources in the karstic Floridan Aquifer

J. B. Heffernan et al.

Title Page

Abstract

Introduction

Conclusions

References

Tables

Figures

◀

▶

◀

▶

Back

Close

Full Screen / Esc

Printer-friendly Version

Interactive Discussion



nitrogen isotope values beneath nitrate contamination sources, *Ground Water*, 36, 418–426, 1998.

Galloway, J. N., Aber, J. D., Erisman, J. W., Seitzinger, S. P., Howarth, R. W., Cowling, E. B., and Cosby, B. J.: The nitrogen cascade, *Bioscience*, 53, 341–356, 2003.

5 Granger, J., Sigman, D. M., Lehmann, M. F., and Tortell, P. D.: Nitrogen and oxygen isotope fractionation during dissimilatory nitrate reduction by denitrifying bacteria, *Limnol. Oceanogr.*, 53, 2533–2545, 2008.

Green, C. T., Puckett, L. J., Bohlke, J. K., Bekins, B. A., Phillips, S. P., Kauffman, L. J., Denver, J. M., and Johnson, H. M.: Limited occurrence of denitrification in four shallow aquifers in agricultural areas of the United States, *J. Environ. Qual.*, 37, 994–1009, doi:10.2134/jeq2006.0419, 2008.

10 Groffman, P. M., Butterbach-Bahl, K., Fulweiler, R. W., Gold, A. J., Morse, J. L., Stander, E. K., Tague, C., Tonitto, C., and Vidon, P.: Challenges to incorporating spatially and temporally explicit phenomena (hotspots and hot moments) in denitrification models, *Biogeochemistry*, 93, 49–77, doi:10.1007/s10533-008-9277-5, 2009.

Gulley, J., Martin, J. B., Sreaton, E. J., and Moore, P. J.: River reversals into karst springs: a model for cave enlargement in eogenetic karst aquifers, *Geol. Soc. Am. Bull.*, 123, 457–467, doi:10.1130/b30254.1, 2011.

20 Hall, C. M., Castro, M. C., Lohmann, K. C., and Ma, L.: Noble gases and stable isotopes in a shallow aquifer in Southern Michigan: Implications for noble gas paleotemperature reconstructions for cool climates, *Geophys. Res. Lett.*, 32(4), L18404, doi:10.1029/2005gl023582, 2005.

Hamme, R. C. and Emerson, S. R.: The solubility of neon, nitrogen and argon in distilled water and seawater, *Deep-Sea Res. Pt. I*, 51, 1517–1528, doi:10.1016/j.dsr.2004.06.009, 2004.

25 Harms, T. K. and Grimm, N. B.: Hot spots and hot moments of carbon and nitrogen dynamics in a semiarid riparian zone, *J. Geophys. Res.-Biogeosci.*, 113, G01020, 2008.

Harrington, D., Maddox, G., and Hicks, R.: Florida springs initiative monitoring network report and recognized sources of nitrate, Florida Department of Environmental Protection, Tallahassee, FL, 103, 2010.

30 Hedin, L. O., von Fischer, J. C., Ostrom, N. E., Kennedy, B. P., Brown, M. G., and Robertson, G. P.: Thermodynamic constraints on nitrogen transformations and other biogeochemical processes at soil-stream interfaces, *Ecology*, 79, 684–703, 1998.

Heffernan, J. B., Cohen, M. J., Frazer, T. K., Thomas, R., Rayfield, T., Gulley, J., Martin, J. B.,

Denitrification and inference of nitrogen sources in the karstic Floridan Aquifer

J. B. Heffernan et al.

Title Page

Abstract

Introduction

Conclusions

References

Tables

Figures

⏪

⏩

◀

▶

Back

Close

Full Screen / Esc

Printer-friendly Version

Interactive Discussion



- Delfino, J. J., and Graham, W. D.: Hydrologic and biotic influences on nitrate removal in a subtropical spring-fed river, *Limnol. Oceanogr.*, 55, 249–263, 2010a.
- Heffernan, J. B., Liebowitz, D. L., Frazer, T. K., Evans, J. M., and Cohen, M. J.: Algal blooms and the nitrogen-enrichment hypothesis in Florida springs: evidence, alternatives, and adaptive management, *Ecol. Appl.*, 20, 816–829, 2010b.
- Kana, T. M., Darkangelo, C., Hunt, M. D., Oldham, J. B., Bennett, G. E., and Cornwell, J. C.: Membrane inlet mass-spectrometer for rapid high-precision determination of N₂, O₂, and Ar in environmental water samples, *Anal. Chem.*, 66, 4166–4170, 1994.
- Katz, B. G.: Sources of nitrate contamination and age of water in large karstic springs of Florida, *Environ. Geol.*, 46, 689–706, 2004.
- Katz, B. G., Hornsby, H. D., Bohlke, J. F., and Mokray, M. F.: Sources and chronology of nitrate contamination in spring waters, Suwannee River basin, Florida, US Geological Survey, Reston, VA, 1999.
- Katz, B. G., Bohlke, J. K., and Hornsby, H. D.: Timescales for nitrate contamination of spring waters, Northern Florida, USA, *Chem. Geol.*, 179, 167–186, 2001.
- Katz, B. G., Chelette, A. R., and Pratt, T. R.: Use of chemical and isotopic tracers to assess nitrate contamination and ground-water age, Woodville Karst Plain, USA, *J. Hydrol.*, 289, 36–61, doi:10.1016/j.jhydrol.2003.11.001, 2004.
- Katz, B. G., Sepulveda, A. A., and Verdi, R. J.: Estimating nitrogen loading to ground water and assessing vulnerability to nitrate contamination in a large karstic springs basin, Florida, *J. Am. Water Resour. Assoc.*, 45, 607–627, doi:10.1111/j.1752-1688.2009.00309.x, 2009.
- Kendall, C.: Tracing nitrogen sources and cycling in catchments, in: *Isotope Tracers in Catchment Hydrology*, edited by: Kendall, C. and McDonnell, J. J., Elsevier Science B. V., Amsterdam, The Netherlands, 1998.
- Kendall, C. and Grim, E.: Combustion tube method for measurement of nitrogen isotope ratios using calcium-oxide for total removal of carbon-dioxide and water, *Anal. Chem.*, 62, 526–529, 1990.
- Kendall, C., Elliott, E. M., and Wankel, S. D.: Tracing anthropogenic inputs of nitrogen to ecosystems, in: *Stable Isotopes in Ecology and Environmental Science*, edited by: Michener, R. H. and Lajtha, K., Wiley, Blackwell Publishing, Malden, MA, 375–449, 2007.
- Kincaid, T. R., Hazlett, T. J., and Davies, G. J.: Quantitative Groundwater Tracing and Effective numerical modeling in karst: an example from the Woodville Karst Plain of North Florida, Sinkholes and the Engineering and Environmental Impacts of Karst (GSP 144), Proceedings

Denitrification and inference of nitrogen sources in the karstic Floridan Aquifer

J. B. Heffernan et al.

Title Page

Abstract

Introduction

Conclusions

References

Tables

Figures

⏪

⏩

◀

▶

Back

Close

Full Screen / Esc

Printer-friendly Version

Interactive Discussion

of Tenth Multidisciplinary Conference, 24–28 September 2005, San Antonio, Texas, USA, doi:10.1061/40796(177)13, 2005.

Knoller, K., Vogt, C., Haupt, M., Feisthauer, S., and Richnow, H. H.: Experimental investigation of nitrogen and oxygen isotope fractionation in nitrate and nitrite during denitrification, *Biogeochemistry*, 103, 371–384, doi:10.1007/s10533-010-9483-9, 2011.

Knowles, L., Katz, B. G., and Toth, D. J.: Using multiple chemical indicators to characterize and determine the age of groundwater from selected vents of the Silver Springs group, Central Florida, USA, *Hydrogeol. J.*, 18, 1825–1838, doi:10.1007/s10040-010-0669-y, 2010.

Lehmann, M. F., Reichert, P., Bernasconi, S. M., Barbieri, A., and McKenzie, J. A.: Modelling nitrogen and oxygen isotope fractionation during denitrification in a lacustrine redox-transition zone, *Geochim. Cosmochim. Ac.*, 67, 2529–2542, doi:10.1016/s0016-7037(03)00085-1, 2003.

Loper, D., Landing, W., Pollman, C., and Chan Hilton, A.: Degradation of water quality at Wakulla Springs, FL: assessment and recommendations, Report of the Peer Review Committee on the Workshop Solving Water Pollution Problems in the Wakulla Springshed of North Florida, Florida Department of Environmental Protection, Tallahassee, FL, 70 pp., 2005.

Mariotti, A.: Denitrification in groundwaters, principles and methods for its identification – a review, *J. Hydrol.*, 88, 1–23, 1986.

Martin, J. B. and Dean, R. W.: Exchange of water between conduits and matrix in the Floridan Aquifer, *Chem. Geol.*, 179, 145–165, 2001.

Mattson, R. A., Lowe, E. F., Lippincott, C. L., Di, J., and Battoe, L.: Wekiva River and Rock Springs Run Pollutant Load Reduction Goals, Florida Department of Environmental Protection, Tallahassee, FL, 69 pp., 2006.

McCallum, J. E., Ryan, M. C., Mayer, B., and Rodvang, S. J.: Mixing-induced groundwater denitrification beneath a manured field in Southern Alberta, Canada, *Appl. Geochem.*, 23, 2146–2155, doi:10.1016/j.apgeochem.2008.03.018, 2008.

Miller, J. A.: Ground water atlas of the United States; Alabama, Florida, Georgia, and South Carolina, *Hydrologic Atlas*, US Geological Survey, Reston, VA, 1990.

Notholt, A. J. G., Sheldon, R. P., and Davidson, D. F.: Phosphate rock resources, in: *Phosphate Deposits of the World*, Cambridge University Press, Cambridge, UK, xxix+566 pp., 1989.

Panno, S. V., Hackley, K. C., Hwang, H. H., and Kelly, W. R.: Determination of the sources of nitrate contamination in karst springs using isotopic and chemical indicators, *Chem. Geol.*, 179, 113–128, 2001.

Denitrification and inference of nitrogen sources in the karstic Floridan Aquifer

J. B. Heffernan et al.

Title Page

Abstract

Introduction

Conclusions

References

Tables

Figures



Back

Close

Full Screen / Esc

Printer-friendly Version

Interactive Discussion



- Phelps, G. G.: Chemistry of ground water in the Silver Springs basin, Florida, with an emphasis on nitrate, US Geological Survey, Reston, VA, 54 pp., 2004.
- Phelps, G. G., Walsh, S. J., Gerwig, R. M., and Tate, W. B.: Characterization of the hydrology, water chemistry, and aquatic communities of selected springs in the St. Johns River Water Management District, Florida, 2004, US Geological Survey, Reston, VA, 51 pp., 2006.
- Pittman, J. R., Hatzell, H. H., and Oaksford, E. T.: Spring contributions to water quality and nitrate loads in the Suwannee River during baseflow in July 1995, US Geological Survey, Reston, VA, 1997.
- Schlesinger, W. H.: On the fate of anthropogenic nitrogen, *P. Natl. Acad. Sci. USA*, 106, 203–208, doi:10.1073/pnas.0810193105, 2009.
- Schmidt, N., Lipp, E. K., Rose, J. B., and Luther, M. E.: Enso influences on seasonal rainfall and river discharge in Florida, *J. Climate*, 14, 615–628, doi:10.1175/1520-0442(2001)014<0615:eiosra>2.0.co;2, 2001.
- Schwientek, M., Einsiedl, F., Stichler, W., Stogbauer, A., Strauss, H., and Maloszewski, P.: Evidence for denitrification regulated by pyrite oxidation in a heterogeneous porous groundwater system, *Chem. Geol.*, 255, 60–67, doi:10.1016/j.chemgeo.2008.06.005, 2008.
- Scott, T. M., Means, G. H., Meegan, R. P., Means, R. C., Upchurch, S. B., Copeland, R. E., Jones, J., Roberts, T., and Willet, A.: Springs of Florida, Florida Geological Survey, Tallahassee, FL, 347 pp., 2004.
- Sebilo, M., Billen, G., Grably, M., and Mariotti, A.: Isotopic composition of nitrate-nitrogen as a marker of riparian and benthic denitrification at the scale of the whole Seine River system, *Biogeochemistry*, 63, 35–51, 2003.
- Seitzinger, S., Harrison, J. A., Bohlke, J. K., Bouwman, A. F., Lowrance, R., Peterson, B., Tobias, C., and Van Drecht, G.: Denitrification across landscapes and waterscapes: a synthesis, *Ecol. Appl.*, 16, 2064–2090, 2006.
- Sigman, D. M., Casciotti, K. L., Andreani, M., Barford, C., Galanter, M., and Bohlke, J. K.: A bacterial method for the nitrogen isotopic analysis of nitrate in seawater and freshwater, *Anal. Chem.*, 73, 4145–4153, 2001.
- Sigman, D. M., Granger, J., DiFiore, P. J., Lehmann, M. M., Ho, R., Cane, G., and van Geen, A.: Coupled nitrogen and oxygen isotope measurements of nitrate along the eastern North Pacific margin, *Global Biogeochem. Cy.*, 19, GB4022, doi:10.1029/2005gb002458, 2005.
- Sigman, D. M., DiFiore, P. J., Hain, M. P., Deutsch, C., Wang, Y., Karl, D. M., Knapp, A. N., Lehmann, M. F., and Pantoja, S.: The dual isotopes of deep nitrate as a constraint on

Denitrification and inference of nitrogen sources in the karstic Floridan Aquifer

J. B. Heffernan et al.

Title Page

Abstract

Introduction

Conclusions

References

Tables

Figures



Back

Close

Full Screen / Esc

Printer-friendly Version

Interactive Discussion



the cycle and budget of oceanic fixed nitrogen, *Deep-Sea Res. Pt. I*, 56, 1419–1439, doi:10.1016/j.dsr.2009.04.007, 2009.

Smith, V. H. and Schindler, D. W.: Eutrophication science: where do we go from here?, *Trends Ecol. Evol.*, 24, 201–207, doi:10.1016/j.tree.2008.11.009, 2009.

5 Tarits, C., Aquilina, L., Ayraud, V., Pauwels, H., Davy, P., Touchard, F., and Bour, O.: Oxido-reduction sequence related to flux variations of groundwater from a fractured basement aquifer (Ploemeur area, France), *Appl. Geochem.*, 21, 29–47, doi:10.1016/j.apgeochem.2005.09.004, 2006.

Taylor, P. G. and Townsend, A. R.: Stoichiometric control of organic carbon-nitrate relationships from soils to the sea, *Nature*, 464, 1178–1181, doi:10.1038/nature08985, 2010.

10 Torrento, C., Cama, J., Urmeneta, J., Otero, N., and Soler, A.: Denitrification of groundwater with pyrite and thiobacillus denitrificans, *Chem. Geol.*, 278, 80–91, doi:10.1016/j.chemgeo.2010.09.003, 2010.

15 Torrento, C., Urmeneta, J., Otero, N., Soler, A., Vinas, M., and Cama, J.: Enhanced denitrification in groundwater and sediments from a nitrate-contaminated aquifer after addition of pyrite, *Chem. Geol.*, 287, 90–101, doi:10.1016/j.chemgeo.2011.06.002, 2011.

Toth, D. J. and Katz, B. G.: Mixing of shallow and deep groundwater as indicated by the chemistry and age of karstic springs, *Hydrogeol. J.*, 14, 827–847, doi:10.1007/s10040-005-0478-x, 2006.

20 Townsend, A. R. and Davidson, E. A.: Denitrification across landscapes and waterscapes, *Ecol. Appl.*, 16, 2055–2056, 2006.

USGS: Nutrients in the Upper Mississippi River: scientific information to support management decisions, *USGS Fact Sheet* 6, 2003.

25 Vitousek, P. M.: Beyond global warming – ecology and global change, *Ecology*, 75, 1861–1876, 1994.

Vogel, J. C., Talma, A. S., and Heaton, T. H. E.: Gaseous nitrogen as evidence for denitrification in groundwater, *J. Hydrol.*, 50, 191–200, doi:10.1016/0022-1694(81)90069-x, 1981.

Wicks, C. M. and Herman, J. S.: The effect of a confining unit on the geochemical evolution of groundwater in the Upper Floridan Aquifer system, *J. Hydrol.*, 153, 139–155, doi:10.1016/0022-1694(94)90189-9, 1994

30 Wilson, G. B. and McNeill, G. W.: Noble gas recharge temperatures and the excess air component, *Appl. Geochem.*, 12, 747–762, doi:10.1016/s0883-2927(97)00035-8, 1997.

Wood, E. D., Armstrong, F. A. J., and Richards, F. A.: Determination of nitrate in sea water by

cadmium–copper reduction to nitrite, *J. Mar. Biol. Assoc. UK*, 47, 31–43, 1967.
Zhang, Y. C., Slomp, C. P., Broers, H. P., Passier, H. F., and Van Cappellen, P.: Denitrification coupled to pyrite oxidation and changes in groundwater quality in a shallow sandy aquifer, *Geochim. Cosmochim. Ac.*, 73, 6716–6726, doi:10.1016/j.gca.2009.08.026, 2009.

BGD

8, 10247–10294, 2011

**Denitrification and
inference of nitrogen
sources in the karstic
Floridan Aquifer**

J. B. Heffernan et al.

Title Page

Abstract

Introduction

Conclusions

References

Tables

Figures



Back

Close

Full Screen / Esc

Printer-friendly Version

Interactive Discussion

BGD

8, 10247–10294, 2011

Denitrification and inference of nitrogen sources in the karstic Floridan Aquifer

J. B. Heffernan et al.

Title Page

Abstract

Introduction

Conclusions

References

Tables

Figures

I◀

▶I

◀

▶

Back

Close

Full Screen / Esc

Printer-friendly Version

Interactive Discussion

**Table 1.** Parameter values for determination of solubility-temperature relationships for Ne, Ar, and N₂ gas.

Coefficient	Ne	Ar	N ₂
A_0	2.18156	2.79150	6.42931
A_1	1.29108	3.17609	2.92704
A_2	2.12504	4.13116	4.32531
A_3	0	4.90379	4.69149

Denitrification and inference of nitrogen sources in the karstic Floridan Aquifer

J. B. Heffernan et al.

Table 2. Alternative estimates of initial NO_3^- concentration ($[\text{NO}_3^-]_{\text{init}}$) and the proportion of $[\text{NO}_3^-]_{\text{R}}$ remaining in springs of the Ichetucknee River for dates when direct estimates of denitrification ($[\text{N}_2]_{\text{den}}$) are available. All values are in mg N l^{-1} .

Date	Spring	NO_3^-	$[\text{N}_2]_{\text{den}}$	$[\text{NO}_3^-]_{\text{R-NO}_3}^{\text{a}}$	$[\text{NO}_3^-]_{\text{R-N}_2 \text{ den}}^{\text{b}}$	$[\text{NO}_3^-]_{\text{init}}^{\text{c}}$	Mean $[\text{NO}_3^-]_{\text{init}}$ (SD) ^d
24 Oct 2001	Blue Hole	0.68	0.54	0.83	0.56	1.22	
	Mission	0.50	0.45	0.61	0.53	0.95	
	Headspring	0.82	0.15	1.00	0.85	0.97	1.09 (0.2)
30 Jan 2007	Devil's Eye	0.61	0.78	0.73	0.44	1.39	
	Blue Hole	0.76	0.92	0.92	0.45	1.68	
	Mill Pond	0.52	0.72	0.63	0.42	1.24	
	Mission	0.59	1.04	0.71	0.36	1.63	
9 Jun 2010	Headspring	0.83	0.53	1.00	0.61	1.36	1.49 (0.21)
	Devil's Eye	0.40	0.53	0.49	0.43	0.93	
	Blue Hole	0.66	0.52	0.80	0.56	1.18	
	Mill Pond	0.22	0.57	0.26	0.28	0.78	
	Mission	0.49	0.55	0.59	0.47	1.04	
	Headspring	0.82	0.26	1.00	0.76	1.09	0.98 (0.17)

^a Calculated as the ratio of $[\text{NO}_3^-]$ in each spring relative to Headspring $[\text{NO}_3^-]$ on the same sampling date.
^b Calculated as the ratio of $[\text{NO}_3^-]$ in each spring relative to $[\text{NO}_3^-]_{\text{init}}$ for that spring on the same sampling date.
^c Calculated as the sum of $[\text{NO}_3^-]$ and $[\text{N}_2]_{\text{den}}$ for each sampling date.
^d Calculated from all springs other than the Ichetucknee Headspring for which data are available on each date.

Title Page

Abstract Introduction

Conclusions References

Tables Figures

⏪ ⏩

◀ ▶

Back Close

Full Screen / Esc

Printer-friendly Version

Interactive Discussion



BGD

8, 10247–10294, 2011

Denitrification and inference of nitrogen sources in the karstic Floridan Aquifer

J. B. Heffernan et al.

Table 3. Results of analysis of variance (ANOVA) to evaluate within- vs. among-spring variation in the concentration of denitrification-derived N_2 ($[N_2]_{den}$), proportional size of residual nitrate pool ($[NO_3^-]_R$), and isotopic signature of nitrate ($\delta^{15}N_{NO_3}$).

Source	SSE	df	MSE	<i>F</i>	<i>p</i>
N_{2-den}					
Spring	44.744	15	2.983	23.367	< 0.0001
Error	4.723	37	0.128		
$[NO_3^-]_R$					
Spring	38 634.0	15	2575.6	15.842	< 0.0001
Error	5202.6	32	162.6		
$\delta^{15}N_{NO_3}$					
Spring	2699.296	33	81.797	3.039	< 0.0001
Error	434.824	165	2.635		

Title Page

Abstract

Introduction

Conclusions

References

Tables

Figures

⏪

⏩

◀

▶

Back

Close

Full Screen / Esc

Printer-friendly Version

Interactive Discussion

Denitrification and inference of nitrogen sources in the karstic Floridan Aquifer

J. B. Heffernan et al.

Title Page

Abstract

Introduction

Conclusions

References

Tables

Figures

⏪

⏩

◀

▶

Back

Close

Full Screen / Esc

Printer-friendly Version

Interactive Discussion



Table 4. Intercept (β_0), slope (β_1), and covariation strength (r^2) of $\delta^{15}\text{N}_{\text{NO}_3}$ - $\delta^{18}\text{O}_{\text{NO}_3}$ relationships on individual dates from the Ichetucknee River springs time series.

Date	β_0	β_1	r^2
30 Jan 2007	0.91	1.13	0.982
3 Jul 2007	6.64	0.95	0.942
2 Aug 2007	7.93	0.72	0.997
14 Sept 2007	4.95	1.20	0.979
18 Oct 2007	5.03	1.15	0.983
29 Nov 2007	5.70	1.02	0.964
18 Dec 2007	5.32	1.09	0.994
17 Jan 2008	6.39	0.91	0.961
22 Feb 2008	5.54	1.04	0.979
27 Mar 2008	5.03	1.12	0.960
24 Apr 2008	5.21	1.09	0.992
26 Jun 2008	4.97	1.15	0.975
15 Mar 2009	2.98	0.91	0.988
14 Oct 2009	1.52	1.25	0.994
16 Nov 2009	0.33	1.34	0.985
9 Jun 2010	3.95	1.05	0.999
Mean	4.52	1.07	0.980
SD	1.84	0.14	0.007
Min	0.33	0.72	0.942
Max	7.93	1.34	0.999

Denitrification and inference of nitrogen sources in the karstic Floridan Aquifer

J. B. Heffernan et al.

Title Page	
Abstract	Introduction
Conclusions	References
Tables	Figures
◀	▶
◀	▶
Back	Close
Full Screen / Esc	
Printer-friendly Version	
Interactive Discussion	

Discussion Paper | Discussion Paper | Discussion Paper | Discussion Paper

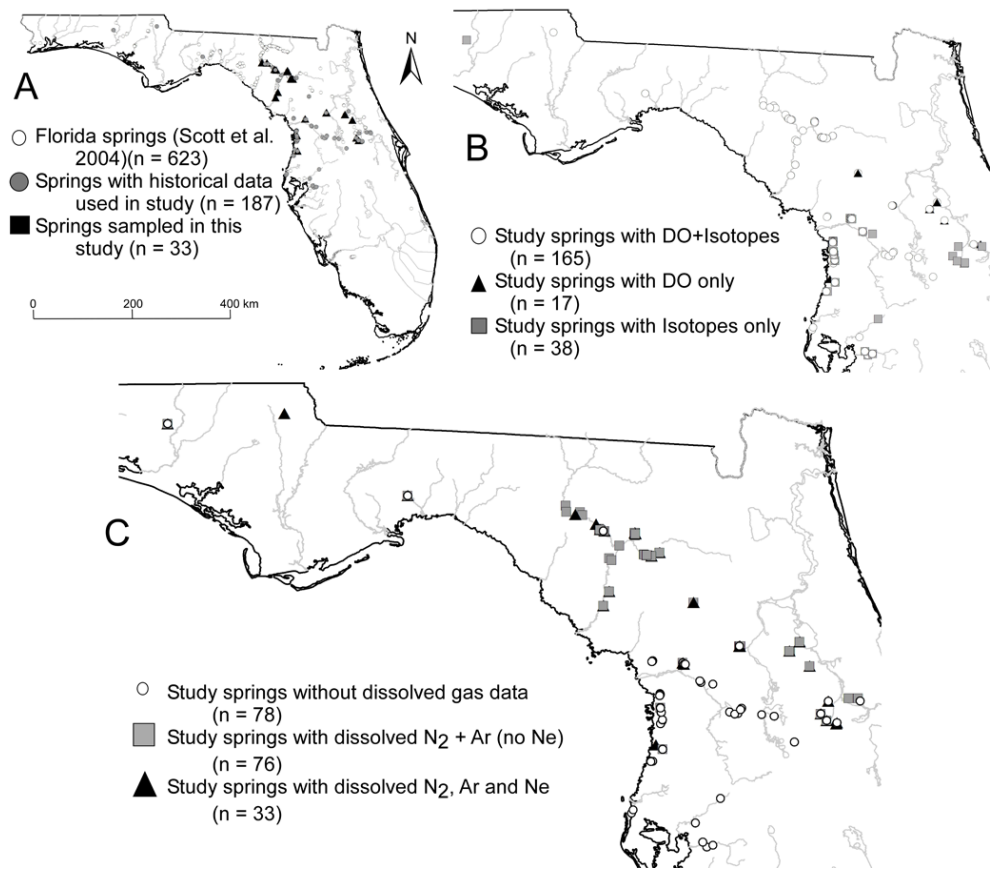


Fig. 1. Geographic distribution of Florida springs and observations sets used in this study. Panels illustrate (A) distribution of study sites (closed symbols) in comparison to distribution of all named springs, (B) distribution of study springs with and without isotopic measurements, and (C) distribution of study sites without dissolved gas data, with O₂, Ar, and N₂, and with additional observation of Ne.



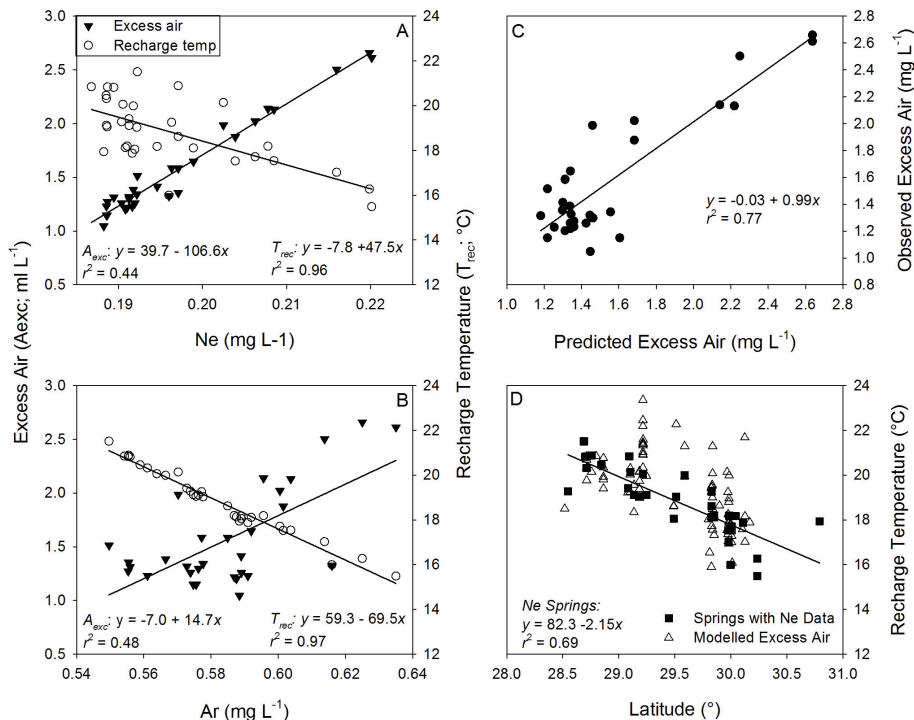


Fig. 2. Geochemical indicators (**A**, **B**) and springsheds predictors (**C**, **D**) of excess air (A_{exc}) and recharge temperature (T_{rec}) in Florida springs. (**A**) Ne concentrations are the overwhelming determinant of A_{exc} estimates, and only weakly correlated with T_{rec} ; (**B**) Ar concentrations had relatively small influence on A_{exc} estimates, but a high degree of influence over estimates of T_{rec} . These relationships permit statistical determination of excess air and robust estimation of recharge temperature for springs without Ne measurements. (**C**) A_{exc} across springs was best predicted by the combination of aquifer vulnerability (V_{aq}) and spring size as measured by mean historic discharge (Q_{por}). (**D**) T_{rec} decreased with increasing latitude, a relationship that is clearer among springs for which Ne data allowed simultaneous direct estimation of A_{exc} .

Denitrification and inference of nitrogen sources in the karstic Floridan Aquifer

J. B. Heffernan et al.

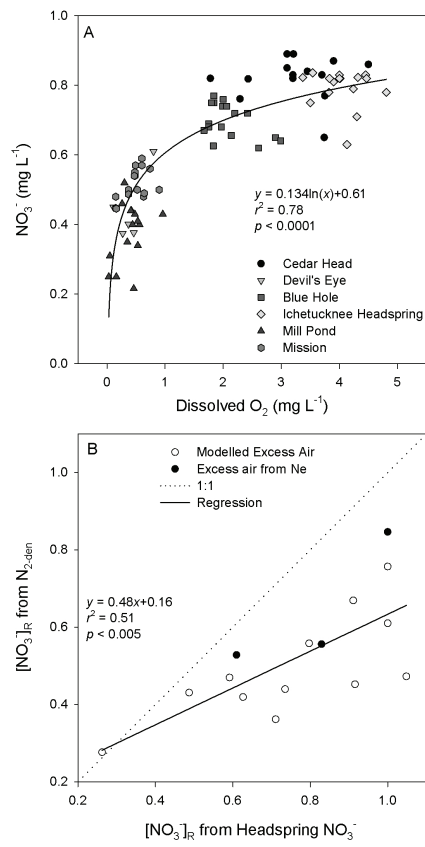


Fig. 3. Denitrification as a driver of nitrate concentration in the springs of the Ichetucknee River as indicated by **(A)** correlations between dissolved O_2 and NO_3^- and **(B)** correlations between estimates of residual nitrate pools $[\text{NO}_3^-]_{\text{R}}$ from differences between the Ichetucknee Headspring and from direct measures of denitrification-derived N_2 ($[\text{N}_2]_{\text{den}}$).

Title Page

Abstract Introduction

Conclusions References

Tables Figures

⏪ ⏩

◀ ▶

Back Close

Full Screen / Esc

Printer-friendly Version

Interactive Discussion



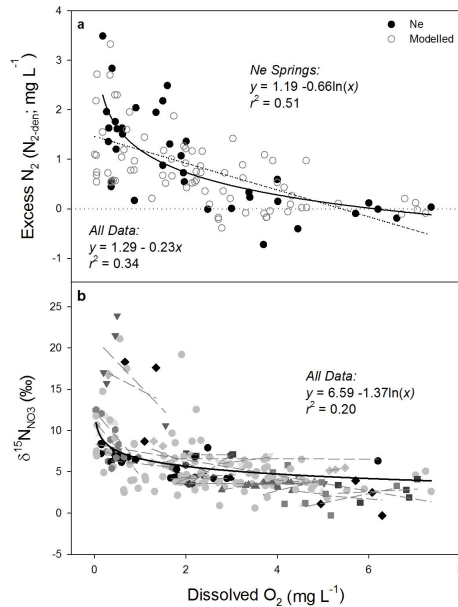


Fig. 4. Dissolved oxygen as a predictor of **(a)** excess N₂ and **(b)** $\delta^{15}\text{N}_{\text{NO}_3}$ in Florida springs. In **(a)**, closed symbols indicate measurements of denitrification-derived N₂ ([N₂]_{den}) based on direct estimation of excess air and recharge temperature via Ne and Ar; best fit for Ne springs is given by the solid line. Open symbols in **(a)** indicate [N₂]_{den} measurements based on modeled excess air and estimation of recharge temperature from Ar; best fit for all [N₂]_{den} data are shown by the dashed line. In **(b)**, open symbols indicate data from springs with 3 or fewer observations; closed symbols indicate data from springs with 4 or more observations. Lines in **(b)** are best-fit linear regressions for individual springs with four or more observations of O₂ and $\delta^{15}\text{N}_{\text{NO}_3}$. Springs with high O₂ exhibit little variation in $\delta^{15}\text{N}_{\text{NO}_3}$, but low O₂ springs exhibit higher variability in $\delta^{15}\text{N}_{\text{NO}_3}$ that is linked to variation in oxygen concentrations. Best-fit parameters for individual springs and their relationship to mean dissolved O₂ is shown in Fig. 7.

Denitrification and inference of nitrogen sources in the karstic Floridan Aquifer

J. B. Heffernan et al.

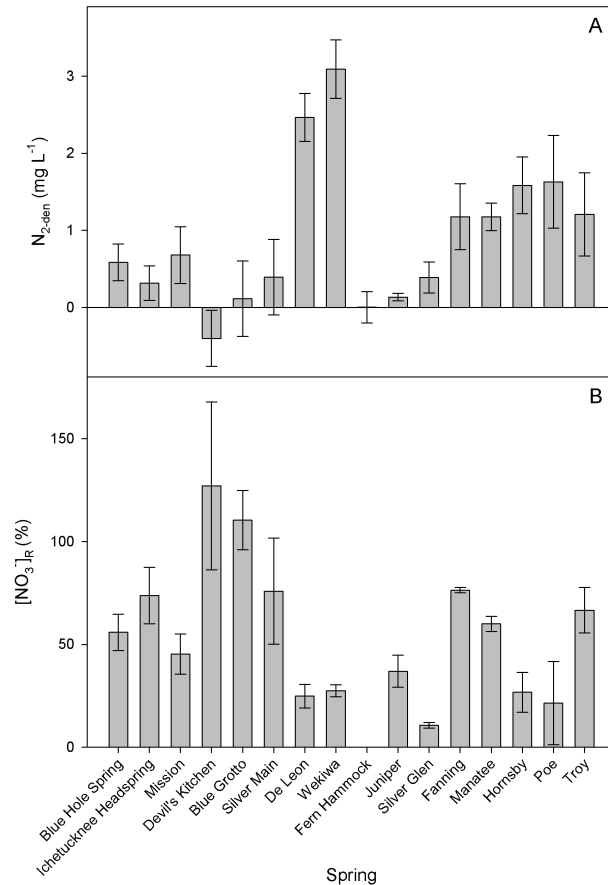


Fig. 5. Variation in the magnitude of denitrification ($[N_2]_{\text{den}}$; panel **A**) and residual nitrate pools ($[\text{NO}_3^-]_R$; panel **B**) within and among springs of the Upper Floridan Aquifer. Variation among springs accounts for more than 90% of total variation in $[N_2]_{\text{den}}$. Full results of analysis of variance are given in Table 3. Data shown are from all springs with 3 or more estimates of $[N_2]_{\text{den}}$.

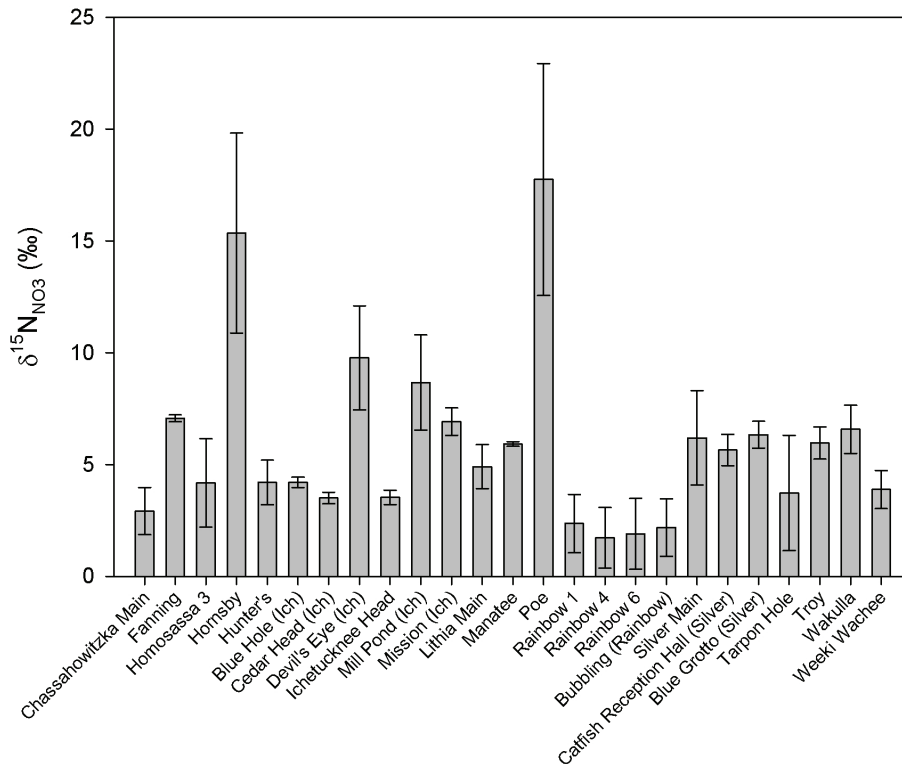


Fig. 6. Variation in nitrate isotopic composition ($\delta^{15}\text{N}_{\text{NO}_3}$) within and among springs of the Upper Floridan Aquifer. Variation among springs accounts for more than 90 % of total variation in $\delta^{15}\text{N}_{\text{NO}_3}$. Full results of analysis of variance are given in Table 3. Data shown are from all springs with 3 or more measurements of $\delta^{15}\text{N}_{\text{NO}_3}$.

Denitrification and inference of nitrogen sources in the karstic Floridan Aquifer

J. B. Heffernan et al.

Title Page

Abstract Introduction

Conclusions References

Tables Figures

⏪ ⏩

◀ ▶

Back Close

Full Screen / Esc

Printer-friendly Version

Interactive Discussion



Denitrification and inference of nitrogen sources in the karstic Floridan Aquifer

J. B. Heffernan et al.

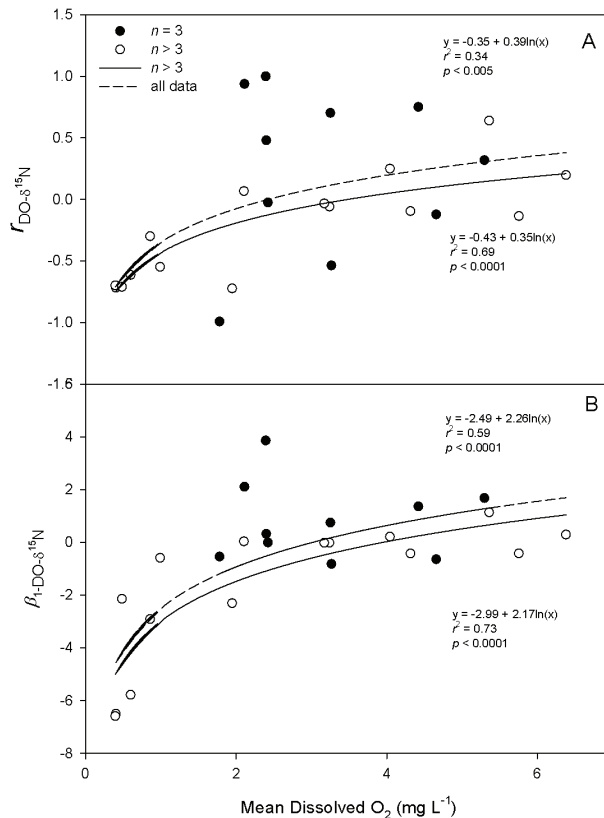


Fig. 7. Parameters of within-spring relationships between dissolved O_2 and $\delta^{15}\text{N}_{\text{NO}_3}$ as a function of spring mean dissolved oxygen. Large negative values of both **(A)** correlation coefficient and **(B)** slope in low- O_2 springs, and their absence in higher- O_2 systems, suggest that isotopically-enriched nitrate pools are associated with old, deeply anoxic flowpaths where denitrification would be most likely to occur. Closed symbols indicate springs with 3 observations of O_2 and $\delta^{15}\text{N}_{\text{NO}_3}$. Open symbols indicated springs with 4 or more observations.

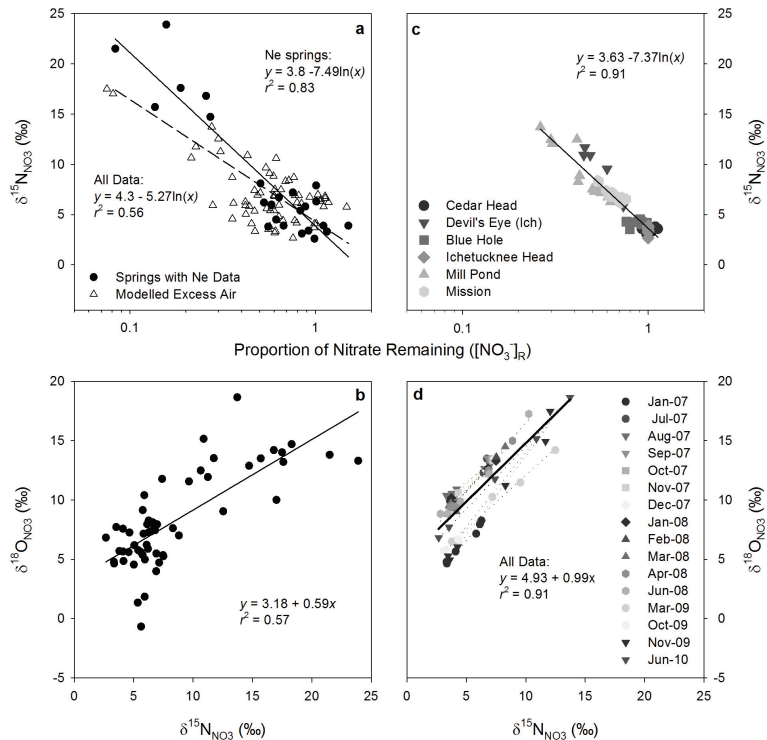


Fig. 8. Effects of denitrification on isotopic composition of nitrate in Florida springs. Variation in $\delta^{15}\text{N}_{\text{NO}_3}$ was strongly correlated with denitrification progression **(a)** as estimated from excess N_2 and observed nitrate concentrations across 61 springs, and **(b)** as estimated from differences between the Ichetucknee Headsprings and other springs in the Ichetucknee River. Positive correlation between $\delta^{15}\text{N}_{\text{NO}_3}$ and $\delta^{18}\text{O}_{\text{NO}_3}$ **(c)** across springs and **(d)** over time within the Ichetucknee system are also consistent with denitrification rather than variation in source as a driver of $\delta^{15}\text{N}_{\text{NO}_3}$.

Denitrification and inference of nitrogen sources in the karstic Floridan Aquifer

J. B. Heffernan et al.

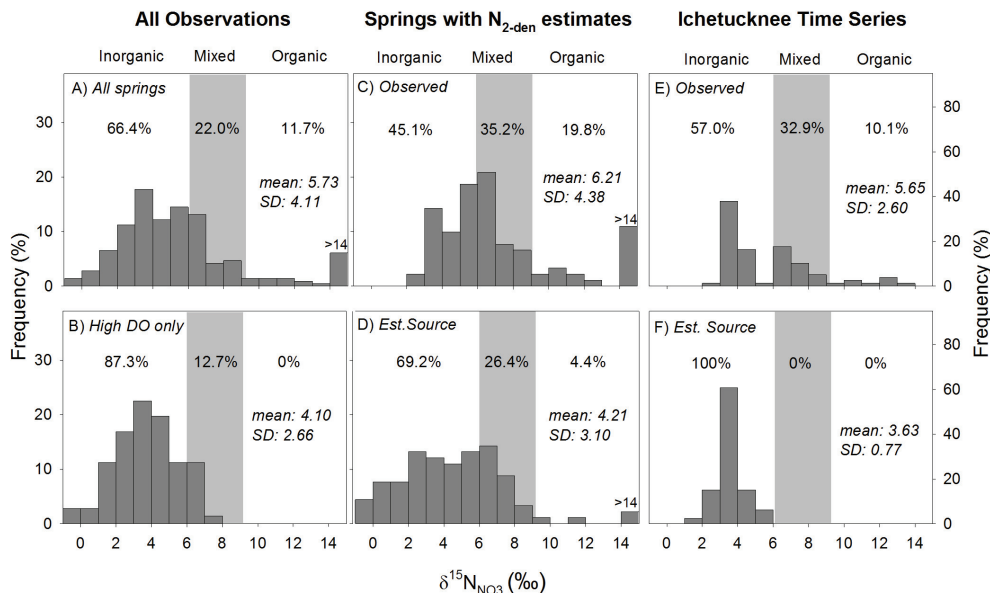


Fig. 9. Implications of fractionation by denitrification for inference of N sources to Florida springs. The distribution of $\delta^{15}\text{N}_{\text{NO}_3}$ across all observations (A), among springs sampled for dissolved gases in this study (C) and from the Ichetucknee time series (E) all suggest meaningful contributions of organic sources (one third to one half of springs). However, $\delta^{15}\text{N}_{\text{NO}_3}$ values in high DO springs (B) and source $\delta^{15}\text{N}_{\text{NO}_3}$ as back-calculated from isotopic enrichment factor and denitrification progression (D, F) suggest inorganic fertilizers and soil N (from mineralized OM) as the predominant source in the overwhelming majority of springs.

Title Page

Abstract Introduction

Conclusions References

Tables Figures

◀ ▶

◀ ▶

Back Close

Full Screen / Esc

Printer-friendly Version

Interactive Discussion

