

**Invertebrate fossils
from cave sediments**

O. T. Moldovan et al.

Invertebrate fossils from cave sediments: a new proxy for pre-Quaternary paleoenvironments

O. T. Moldovan¹, A. Mihevc², L. Mikó³, S. Constantin⁴, I. Meleg¹, A. Petculescu⁴,
and P. Bosák^{2,5}

¹“Emil Racoviță” Institute of Speleology, Clinicilor 5, 400006 Cluj-Napoca, Romania

²Karst Research Institute, SRC SASA, Titov trg. 2, Postojna, Slovenia

³European Commission, DG Environment, Av. de Beaulieu 5, 1160 Auderghem, Brussels, Belgium

⁴“Emil Racoviță” Institute of Speleology, Frumoasă 31, 010986 București, Romania

⁵Institute of Geology AS CR, v. v. i., Rozvojová 269, 165 00 Praha 6, Czech Republic

Received: 18 March 2011 – Accepted: 23 March 2011 – Published: 30 March 2011

Correspondence to: O. T. Moldovan (oanamol@hasdeu.ubbcluj.ro)

Published by Copernicus Publications on behalf of the European Geosciences Union.

Title Page

Abstract

Introduction

Conclusions

References

Tables

Figures

◀

▶

◀

▶

Back

Close

Full Screen / Esc

Printer-friendly Version

Interactive Discussion



Abstract

Five samples of clastic sediments from interior cave facies taken in three Slovenian relic caves (Trhlovca, Račiška pečina, and a cave in Črnotiče Quarry, Classical Karst, SW Slovenia) provided invertebrate fossil remains. Most of them belong to Oribatida but sparse individuals of Cladocera and insects were also identified. They represent the first pre-Quaternary invertebrate fossils found in sediments of continental temperate climate. The Pliocene/Pleistocene age of the sediments was determined by paleomagnetic dating chronologically calibrated by micromammal biostratigraphy. Invertebrate fossils could be validated as new proxy for the study of cave sediments due to their suitability for ecological and paleogeographic correlations in caves and outside the caves. They also bring additional information about cave formation and karst hydraulic regime in the area. Even if the number of remains was very low, it represents evidence that climatic conditions in caves allow a better preservation of fossil remains of some groups as compared to most of the surface habitats. This may open a new direction in the study of cave sediments.

1 Introduction

Cave sediments represent conservers of the geological and paleoenvironmental past (Horáček and Bosák, 1989) as well as of biological and anthropological information (e.g., Kukla and Ložek, 1958; Horáček and Ložek, 1988; Bosák et al., 1989; Sasowsky and Myroie, 2004). This is of special importance for the terrestrial (continental) history, where correlative sediments are mostly missing (Horáček and Bosák, 1989), which is the case of the studied karst region. Cave sediments are formed in place in caves, or are allochthonous in origin (Kyrle, 1923; Kukla and Ložek, 1958). Two contrasting facies can be distinguished among cave environments (Kukla and Ložek, 1958). The *entrance facies* includes fine-grained sediments transported from the vicinity of the cave by wind, water and slope processes. It represents the most valuable section

BGD

8, 3403–3434, 2011

Invertebrate fossils from cave sediments

O. T. Moldovan et al.

Title Page

Abstract

Introduction

Conclusions

References

Tables

Figures

◀

▶

◀

▶

Back

Close

Full Screen / Esc

Printer-friendly Version

Interactive Discussion



of the cave from a stratigraphic point of view as it may contain datable archeological and paleontological remains that are protected from surface erosion, weathering and biochemical alteration (cf. Ford and Williams, 1989, 2007). The *interior facies* develops in those parts of the cave that are more remote from the surface. Relics of phreatic silts and clays are relatively rare and they typically contain no fossils. A dominant part of sediments belonging to the interior facies form in vadose conditions. Sedimentary sequences here are extensive, consisting of fluvial gravels and sands overlain by flood or injecta deposits of laminated silts and clays often intercalated by speleothems. They may also contain dejecta, colluvial material and outer clastic sediments (including marine ones), often re-deposited and/or injected for longer distances within the cave (cf. Ford and Williams, 1989, 2007). Most of the sediments result from material carried by (1) sinking streams and (2) gravity-driven infiltration from the surface (e.g., Ford and Williams, 1989; Brinkman and Reeder, 1995; White, 2007). Due to the dynamic environment of cave interiors and periodicity of events, sedimentary sequences often represent a series of depositional and erosional events (sedimentary cycles). These are separated by unconformities (breaks in deposition), which may represent periods of substantial duration, and the erosional phases may be of much longer duration than the depositional events (e.g., Bosák, 2002, 2008; Bosák et al., 2003). Such sediments represent remnants of past fluvial or lacustrine conditions within the cave. Distinct sequences of clastic sediments usually reflect conditions and changes in water volume and velocity, sediment source, surface weathering conditions and depositional conditions that are a function of climate change. Moreover, specific topoclimatic features of the cave environments delay the destruction processes of fossil remains (Sasowsky and Mylroie, 2004; Polk et al., 2007). Therefore, many types of information can be well preserved in the underground, such as: (1) the above-ground source (which may no longer be found on the surface), (2) the environmental evolution on the surface, including information on past vegetation and land use which is not preserved in fast-changing surface soils (Kukla and Ložek, 1958; Bottrell, 1996; Courty and Vallverdu, 2001; Panno et al., 2004; Polk et al., 2007), (3) the sub-surface depositional processes

**Invertebrate fossils
from cave sediments**

O. T. Moldovan et al.

[Title Page](#)[Abstract](#)[Introduction](#)[Conclusions](#)[References](#)[Tables](#)[Figures](#)[◀](#)[▶](#)[◀](#)[▶](#)[Back](#)[Close](#)[Full Screen / Esc](#)[Printer-friendly Version](#)[Interactive Discussion](#)

(Kukla and Ložek, 1958), and (4) the long-lasting general evolution of the sub-surface and surface karst (cf. Zupan Hajna et al., 2008b).

In karst areas, the evolution of the surface landscape is recorded inside the caves; lowering of the base level shifts active speleogenesis to lower elevations, and the above lying passages are subsequently abandoned and filled by sediments. Clastic sediments, sometimes intercalated with chemical precipitates, transported from the surface through the caves are frequently preserved unaltered for millions of years, providing different types of information (Bosák et al., 1998, 2003; Sasowsky, 2007). Although the recognition that cave sediments can reflect and conserve paleoclimatic data is old (Kukla and Ložek, 1958 and literature herein), the scientific interest in paleoclimatic record from clastic cave deposits developed only in the past decades (see summary of White, 2007). Mostly fossil vertebrate remains have been identified in clastic cave sediments and used to characterize environmental conditions, or used as paleoclimate proxies. Speleothems have been broadly utilized as paleoclimatic proxies using stable isotopes in combination with numerical dating, palynology and sedimentological features of clastic cave sediments (Bastin, 1978; Bastin et al., 1986 among others). Environmental studies of cave sediments, especially those of the entrance facies, have been also carried out using different kinds of proxies; e.g., charcoal, sediment pollen and coprolite pollen (Carrión et al., 1992a, b, 1995, 1997, 2005; Finlayson et al., 2008), stable carbon isotopes of organic matter (Turney et al., 2001), pesticide content derived from agricultural pollution (Bottrell, 1996), the presence of a certain vegetation type (Panno et al., 2004), the fulvic acid fraction of the organic matter (Polk et al., 2007), magnetic mineral properties (e.g., Elwood et al., 1996; Sroubek et al., 2001), or mollusks in cave archeological sites, etc. Other studies that focused on recent cave sediments as a proxy for the environmental changes on surface were specifically linked to land-use (Polk et al., 2007). Only a single paper (Polyak et al., 2001) mentioned the discovery of twelve species of oribatid mites in two Holocene stalagmites from New Mexico, which were integrated in a paleoclimatic study.

BGD

8, 3403–3434, 2011

Invertebrate fossils from cave sediments

O. T. Moldovan et al.

Title Page

Abstract

Introduction

Conclusions

References

Tables

Figures

◀

▶

◀

▶

Back

Close

Full Screen / Esc

Printer-friendly Version

Interactive Discussion



**Invertebrate fossils
from cave sediments**

O. T. Moldovan et al.

[Title Page](#)[Abstract](#)[Introduction](#)[Conclusions](#)[References](#)[Tables](#)[Figures](#)[◀](#)[▶](#)[◀](#)[▶](#)[Back](#)[Close](#)[Full Screen / Esc](#)[Printer-friendly Version](#)[Interactive Discussion](#)

Our study represents the first attempt to identify and study fossil invertebrates in clastic sediments from the interior cave facies and to discuss their possible use as biological proxies in paleoenvironmental studies. Similar methods and proxies to those from other sedimentary deposits, as yet studied in lakes, seas and lotic environments, can be applied also to cave sediments in order to obtain information on paleoclimate and paleoenvironmental conditions at the time of sediment deposition. Surface sedimentary deposits, especially lacustrine ones, represent paleoecological archives of plant macrofossils, pollen, algae and fossil invertebrates. Paleolimnology has developed as a multidisciplinary science especially in the last two decades using physical, chemical and biological proxies preserved in lake sediments (Luoto, 2009). The structure and the composition of fossil assemblages (we prefer the term fossil, as proposed by Erickson and Platt, 2007, to “subfossil”) vary in response to changes in the environment, reflecting past climate, nutrient conditions, oxygen content, pH, pollution or ecological interactions (Luoto, 2009). The cladocerans (Crustacea; Rautio, 2007), chironomids (Diptera; Walker, 2001), and ostracods (Crustacea; Holmes, 2001) are the most commonly used invertebrate remains in paleolimnology. It is not difficult to identify them to a species level, and their autoecology is well known (Luoto, 2009). Other remains, such as protozoans, bryozoans, oribatid mites (Acarina), insects and mollusks, are rather rarely used (Smol, 2002). Until recently, invertebrate fossils have mostly been studied in lake sediments and only few of them in fluvial environments (Gandouin et al., 2006, 2007; Engels et al., 2008; Howard et al., 2009).

Clastic sedimentary sequences belonging to the interior cave facies were carefully selected for a first attempt to find fossil invertebrates in caves. Sedimentary sections well dated by magnetostratigraphy and paleomagnetic dates were calibrated by biostratigraphy (Horáček et al., 2007; Zupan Hajna et al., 2008b, 2010). The selected caves are located in the Classical Karst, the part of the Slovene Dinaric region of Kras (southeastern Europe). Shallow marine Dinaric Carbonate Platform deposits (Jurassic to Paleogene) are covered by Eocene flysch siliciclastics. Both units are overthrust in tectonically complicated structures (Placer, 1999). No post-Eocene marine

or terrestrial deposits are preserved on the surface now. Surface morphology and karst evolved during a single post-Eocene karst period. Speleogenesis was later followed by cave infilling processes (partial or complete fossilization) that started already at the Oligocene/Miocene boundary as indicated by fission track (AFTA) and paleontologically-calibrated paleomagnetic data from some of the studied sites (Zupan Hajna et al., 2010).

2 Materials and methods

2.1 The studied sites

Three relic caves, all located in the Dinaric Classical Karst, were selected for this study – Trhlovca, Račiška pečina, and a cave in Črnotiče Quarry (Fig. 1) – also due to the fact that detailed paleomagnetic dating was calibrated by micromammal biostratigraphy in two of them (Horáček et al., 2007).

The Trhlovca Cave (45°40'18.8" N; 13°56'45" E) belongs to the Divaška Cave System. The cave represents a part of an ancient and more extensive system completely choked by sediments. The cave was later partly rejuvenated and sediments exhumed as a consequence of the evolution of the lower-lying Divaška Cave (Bosák et al., 1998, 2000). The preserved fluvial sediments and speleothems, deposited in vadose conditions, are located in stratigraphically relevant position (Fig. 2a). A vertical section, 4.5 m in thickness, was described in detail by Zupan Hajna et al. (2008b). Its central part is well stratified and starts from the top with a brownish-red, clayey sand with intercalations of light-greyish and yellowish-brown sands. The rest of the section is represented by multi-colored clays in the upper half and chocolate-brown clays below. In the basal interval, silty to very fine-grained sandy admixtures occur in bands and laminae. The arrangement of R (reverse) and N (normal) polarized magnetozones shows ages older than 1.77 Ma (Zupan Hajna et al., 2008b).

BGD

8, 3403–3434, 2011

Invertebrate fossils from cave sediments

O. T. Moldovan et al.

Title Page

Abstract

Introduction

Conclusions

References

Tables

Figures

◀

▶

◀

▶

Back

Close

Full Screen / Esc

Printer-friendly Version

Interactive Discussion



The Račiška pečina Cave (45°30'12.5'' N; 14°9'1.56'' E) represents a relic of an old cave system. The 2 m thick vertical section has a composite stratigraphic thickness of 6.5 m (Horáček et al., 2007; Zupan Hajna et al., 2008b; Fig. 2b). Its lower part consists of a vaulted stalagmite that includes several interbedded layers of red clays.

It is overlain by a thick interval of red clays with some silty and sandy intercalations and thin calcite crusts and fossil finds (vertebrates and invertebrate – *Potamon*). The micromammals (with *Apodemus*, cf. *Borsodia*) belong to middle to late MN17 (ca. 1.8–2.4 Ma; Horáček et al., 2007; position of R1 and R2 in Fig. 2). The clays are ponded and partly covered by several collapse boulders. The upper part of the section consists of subhorizontally laminated, porous and light-colored flowstone with some ancient rimstone dams and interbedded red clays and silts. Lutitic interbeds between the flowstone layers resulted from successive flooding that deposited well-sorted fine-grained allochthonous sediments. This may indicate either a distant position far from the ponor of the surface river or an allogenic stream passing through a system of sumps (Horáček et al., 2007). The top of the section represents flowstone layers with intercalations of brown cave loams with bone fragments of *Ursus spelaeus*. Fauna from the clay permitted to fix the arrangement of the interpreted magnetozones with the Geomagnetic Polarity Time Scale (GPTS; Cande and Kent, 1995). The boundary of N- and R-polarized magnetozones within the interval with fauna was identified with the bottom of C2n Olduvai subchron (1.770–1.950 Ma). The magnetozones alternation below can be correlated with the lower part of the Matuyama chron (2.150–2.581 Ma) and the Gauss chron (2.581–3.580 Ma).

Quarry operations in the Črnotiče Quarry (45°33'56.3'' N; 13°52'47.7'' E) uncovered many caves completely filled with sediments (Bosák et al., 1999, 2004; Mihevc, 2001, 2007; Fig. 2c). The studied section is located in the western quarry wall and represents a relic of an extensive, sediment-filled passage with a diameter of about 10 m and a height of more than 17 m. Its top is filled by speleothem breccia with red clay matrix. This is underlain by an interval, up to 4.5 m thick, of light-colored, laminated silts and clays, sometimes sandy, overlying the rest of the section with deep erosion

BGD

8, 3403–3434, 2011

Invertebrate fossils from cave sediments

O. T. Moldovan et al.

Title Page

Abstract

Introduction

Conclusions

References

Tables

Figures

◀

▶

◀

▶

Back

Close

Full Screen / Esc

Printer-friendly Version

Interactive Discussion



and a slight unconformity inside. The lowermost 7 m of the cave fill are composed of cyclically/rhythmically arranged multi-colored fluvial sediments (clays to intraclastic microm conglomerates). This fill rests on sessile tubes of the serpulid *Marifugia cavatica* Absolon et Hrabě, 1930 on the northern cave wall (Mihevc et al., 2001, 2002). The mammal remains (with *Deinsdorfia* sp., *Beremediella fissidens*, *Apodemus* cf. *atavus*, *Rhagapodemus* cf. *frequens*, *Glirulus* sp., *Cseria* sp.) that belong to MN15–MN16 (ca. 3.0–4.1 Ma) were found in the same horizon as the serpulids (Horáček et al., 2007). The basal 1 m is composed of multi-colored laminated silts and clays developed in two sequences separated by an angular unconformity. The fauna indicated an age of the fill older than 1.77 Ma (base of the C2n Olduvai subchron). Most probably, the fill belongs to the Gauss chron (2.6–3.6 Ma) or the other N-polarized subchron within the Gilbert chron (4.18–4.29 or 4.48–4.62 Ma; Bosák et al., 2004; Horáček et al., 2007).

2.2 Sampling protocols and invertebrate fossil identification

A total of 11 samples were taken from the selected sites as indicated in Fig. 2. The samples were taken from the exposed faces, which have been already sampled for paleomagnetic and paleontological studies. Given the exploratory nature of our research, the samples were selected from what appeared to be distinct, stratigraphic units, located in such positions that would allow a clear correlation with the previously established paleontological and magnetic chronostratigraphy. In the Črnotiče Quarry, samples were taken only from the upper part of the originally described section that remained intact after a recent collapse of the topmost sediments in the quarry face.

An approximate quantity of 1 kg of sediment was taken from each sampling point and placed in sealed plastic bags with a label. In the laboratory, the samples were kept in 10% KOH for 30 min, and washed successively through sieves of 250 µm, 125 µm and 40 µm. Sub-samples for each sieve dimension were examined separately under the Olympus SZX2 stereomicroscope in 90° alcohol and each specimen was identified

BGD

8, 3403–3434, 2011

Invertebrate fossils from cave sediments

O. T. Moldovan et al.

Title Page

Abstract

Introduction

Conclusions

References

Tables

Figures

◀

▶

◀

▶

Back

Close

Full Screen / Esc

Printer-friendly Version

Interactive Discussion



under the Olympus BX51 microscope. Identification of the individuals was carried out following the specific methods for each group.

3 Results and discussion

The number of identifiable invertebrate fossils in all samples was very low (Table 1). Some of the samples were completely invertebrate-sterile. Unidentifiable animal fragments and vegetal fragments were also found. The only relatively well-preserved specimens belong to the groups of Cladocera (Crustacea), Oribatida (Acarina), and Chironomida and Hymenoptera (Insecta). All these groups are commonly identified in invertebrate fossil assemblages from lake sediments (Elias, 2007).

3.1 Faunal inventory

3.1.1 Crustacea Cladocera

One *Daphnia* sp. was identified in the Trhlovca Cave. The identified specimen is in a relatively good condition (Fig. 3), but completely flattened laterally. *Daphnia* are known as large-bodied pelagic offshore cladocerans. Korhola (1999) and Korhola et al. (2000) found maximum lake depth to be the most important factor explaining cladoceran distribution in Fennoscandian lakes. Jeppesen et al. (2001) found only post-abdominal claws, mandibles and ehippia of *Daphnia* species in deep Quaternary lake sediments.

3.1.2 Acarina Oribatida

Mites of the suborder Oribatida (Acarina, Arachnida) are typical soil-dwelling microarthropods, which can be also found in caves. Mites are of high potential value as bioindicators of the ecological conditions in terrestrial and aquatic ecosystems (Lebrun and van Straalen, 1995; Behan-Pelletier, 1999; Gulvik, 2007; Gergócs and Hufnagel, 2009). Almost all studies support the idea of a group with many representatives living

BGD

8, 3403–3434, 2011

Invertebrate fossils from cave sediments

O. T. Moldovan et al.

Title Page

Abstract

Introduction

Conclusions

References

Tables

Figures

◀

▶

◀

▶

Back

Close

Full Screen / Esc

Printer-friendly Version

Interactive Discussion



in humid habitats. Drought susceptibility exerts its effects via food limitation indirectly by a decrease of microbiota in soil or other substratum as a result of lack of water. Nevertheless, some species adapted also to xeric conditions or high values of humidity. These minute arthropods are usually preserved well enough in lacustrine or fluvial sediments and in sufficient numbers to be useful as proxies in investigations of Quaternary paleoclimate, paleoecology and stratigraphy (Solhøy and Solhøy, 2000; Solhøy, 2001; Polyak et al., 2001). Five species were identified in the studied samples and four of them are new to science.

A new species belonging to *Miracarus* (Microzetidae) was found in the sediments of the Trhlovca and Račiška caves. Modern representatives of the genus are forest-litter inhabitants. *Oppiella* (*Rhinoppia*) sp. 1 and *Oppiella* (*Rhinoppia*) sp. 2, two species of the family Oppidae were identified in the sediments of the Trhlovca and Račiška caves. Species of the genus *Opiella* (sensu lato) can be considered one of the most common arthropod groups on Earth (Norton and Palmer, 1991) with high diversity and abundance in forest litter, also present in shrublands, ecotone zones and grasslands. One of the new species of *Oppiella* morphologically resembles a species known from modern cave environments. The difference is in the length of sensilla; the recent ones have very long ones. The species in sediments is therefore an extinct element of cave fauna of Slovenia. *Dissorhina* sp. of the same family (Opiidae) was represented in the Trhlovca Cave by two specimens, probably belonging to the same, new species to science. Some species of this genus prefer the border between forest and open areas (Seniczak et al., 2006). Taylor and Wolters (2005) mentioned the tolerance of this genus to drought. *Zygoribatula frisiae* (Oribatulidae) found in the Trhlovca Cave is a living species, belonging to a genus often found in more arid settings (Shepherd et al., 2002). The species is xero-tolerant, today known from repeatedly drying-out mosses and lichens, often in arboricol microhabitats. *Suctobelbella* sp. (*Suctobelbidae*) of the Trhlovca Cave resembles species of the recent genus *Suctobelbella* in some characters but displays some specific characters, which may define a different genus. Species of this family are common in litter and upper organic layer of forest soils, especially with

BGD

8, 3403–3434, 2011

Invertebrate fossils from cave sediments

O. T. Moldovan et al.

Title Page

Abstract

Introduction

Conclusions

References

Tables

Figures

◀

▶

◀

▶

Back

Close

Full Screen / Esc

Printer-friendly Version

Interactive Discussion



large amount of decomposing organic matter and with abundant fungal hyphae. Some of the living species have been found in rotting wood and under bark of dead trees.

3.1.3 Insecta Chironomida

One representative of Orthoclaadiinae was identified in the Črnotiče Quarry cave fill. The absence of mentum made the identification of the lower taxon impossible. Subfamily Orthoclaadiinae is a group of chironomid Diptera whose larvae prefer lotic habitats with cold and well-oxygenated waters (Dimitriadis and Cranston, 2001; Walker, 2007). Representatives of this family inhabit cold and running streams or unstable sandy bottoms of lakes, but are generally adapted to low food (Walker, 2007) and are intolerant to low oxygen levels (Eggermont et al., 2008). It is a widely distributed family of chironomids and its representatives are frequently found in lake sediments.

3.1.4 Insecta Hymenoptera

One individual of the genus *Tetramorium* was found in the sediments of the Trhlovca Cave. The genus is a typical inhabitant of dry landscapes with shrubs. The individual lacks the head, but is otherwise well preserved. It represents a genus with very large distribution in the present fauna.

3.2 Paleoenvironmental significance of the fossil invertebrates

Five taxa from identified ones are new to science and their description is in progress. Only a single taxon as yet identified at a species level is found in the modern fauna (*Zygoribatula frisiae*). Two taxa were identified at a genus level (*Daphnia* and *Tetramorium*) and one taxon as subfamily (Orthoclaadiinae), due to their poor conservation. The cave richest in fossils was the Trhlovca Cave with six identified taxa in three of the five samples. The maximum number of taxa belongs to the oldest sample (T5), presumably due to climatic conditions and sedimentation processes at the time of deposition and subsequently.

BGD

8, 3403–3434, 2011

Invertebrate fossils from cave sediments

O. T. Moldovan et al.

Title Page

Abstract

Introduction

Conclusions

References

Tables

Figures

◀

▶

◀

▶

Back

Close

Full Screen / Esc

Printer-friendly Version

Interactive Discussion



**Invertebrate fossils
from cave sediments**

O. T. Moldovan et al.

Title Page

Abstract

Introduction

Conclusions

References

Tables

Figures

◀

▶

◀

▶

Back

Close

Full Screen / Esc

Printer-friendly Version

Interactive Discussion



All the analyzed samples were taken from cave sediments deposited during the Pliocene and Pleistocene periods, dated by magnetostratigraphy and paleontological content (Fig. 4). During the Pliocene, the climate is globally known to have become cooler and drier than during the Miocene (Robinson et al., 2008), followed by the more pronounced Pleistocene cooling. Broadly, two climatic stages are defined in the period covered by the deposition of clastic sediments in the sampled caves (Fig. 5): the Early–Middle Pliocene (ca. 5.3 Ma to 3.6 Ma) with higher temperatures, and the Late Pliocene–Early Pleistocene (ca. 3.6 to 1.77 Ma) with lower temperatures, more similar to the present-day climate (Haywood, 2009).

Most of the invertebrate fossils were found in the Trhlovca Cave. Samples 1–3 belong to a more recent period than the older infilling where samples 4–5 were collected, but all the studied samples are older than 1.77 Ma (Zupan Hajna et al., 2008b, 2010). Clay samples T1 and T2 include taxa that are typical for forest habitats with relatively high amount of dead organic matter in the upper horizon of soil (*Miracarus* and *Oppiella*) or taxa which can be found in the ecotone zones or in open, moderately humid areas (*Dissorhina*). From the oldest samples, T4–T5, only T5 contained fossil remains. The ecotone zone – typical *Dissorhina* was found in association with dry habitat taxa, such as *Zygoribatula* and *Tetramorium*. Fossils from these three samples indicate a transition from a warmer period with relatively drier vegetation (Early or Middle Pliocene) to a more humid and forested habitats of the Late Pliocene/Early Pleistocene. The presence of *Daphnia* sp. in sample T5 suggests the presence of a lake or a low hydraulic regime of the stream, as well as the proximity of cave entrance. This assumption is also supported by the varved sediments that indicate continuous deposition in the past, during single-flood events or flood pulses that probably lasted less than a few thousand years (Zupan Hajna et al., 2008a). The relatively good preservation of this cladoceran is also indicative of a slow flow from the surface down to the deposition place possibly due to the still epiphreatic position of some parts of the subterranean system (Mihevc, 2007) and to the short-distance transport. The presence of *Daphnia* species, as an indicator of oligotrophic (low food) environments (Szeroczyńska and Zawisza, 2005),

supports the above mentioned hypothesis of a drier vegetation on the surface.

Only sample R4 provided fossil invertebrates in the Račiška pečina. These are represented by three individuals of oribatid mites belonging to the same ecological group of forest inhabitants. Sample R4 comes from the upper half of the section of this cave that belongs to the Early Pleistocene (termination of Olduvai).

The only chironomid identified at a family level was found in sample C1 in the Črnotiče Quarry. Located in the upper half of the sediment section, the Orthocladiinae dipteran can be used as an indicator for colder and well-oxygenated waters. The individual was brought under the ground by a relatively fast flowing river, which suggests a colder climate with more intense precipitation towards the end of the Pliocene.

3.3 Correlations with other proxies

The primary aim of the quantitative reconstructions in paleolimnology is to express the value of environmental variables as a function of biological data, the so-called environment proxy data (Birks, 1995). Such proxy data can be defined quantitatively, or by the presence/absence and ordinal estimates of abundance (Prentice et al., 1996). Nevertheless, the use of less frequently occurring zoological remains in paleolimnology was emphasized by Luoto (2009) as an important proxy for environmental changes. The discovery of five new species (and perhaps a new genus) is important not only for the taxonomy of the group of mites (in this case), but is also of paleoenvironmental significance. Species can bring additional information about the soil and surface fauna biodiversity linked to the paleoclimate, paleogeography and vegetation during the Pliocene/Pleistocene, and the importance of the mid-Pliocene warm period (3 Ma) as a potential analog for future climate has been already emphasized (Salzmann et al., 2009). The Pliocene/Pleistocene cave sediments show a very low concentration of taxa, or nothing at all in more than half of the analyzed samples. The scarcity of fauna remains makes further biostratigraphic interpretation impossible, but the presence and ecology of some taxa can be correlated with the discovered vertebrate remains as well as with the climate and corresponding vegetation of the different Pliocene/Pleistocene

Invertebrate fossils from cave sediments

O. T. Moldovan et al.

Title Page

Abstract

Introduction

Conclusions

References

Tables

Figures

◀

▶

◀

▶

Back

Close

Full Screen / Esc

Printer-friendly Version

Interactive Discussion



periods, indicating a transition from a dry or mild climate with mixed forest to a colder climate and more humid forest (Table 2, Fig. 5).

The fossil vertebrate assemblage from the Črnotiče Quarry, including *Deinsdorfia* sp., *Beremendia fissidens*, *Apodemus* cf. *atavus*, *Rhagapodemus* cf. *frequens*, *Glirulus* sp. and *Cseria* sp. (Horáček et al., 2007), is typical for a temperate and humid climate. The high number of forest and shrub inhabitants (*Apodemus*, *Glirulus*, *Myodes* genera), together with taxa that are widely distributed in temperate and humid climates (*Beremendia fissidens*, *Blarinoides* and *Deinsdorfia* genera), is indicative of a mild climate. At the Račiška pečina Cave, the most important difference is the presence of *Myodes* and *Borsodia* (Horáček et al., 2007) as indicators of a colder and drier climate. Owing to the scarce presence of identifiable invertebrates, a correlation with the equally scarce vertebrate record is problematic. Only three of the invertebrate samples (C1, T1 and R4) come from the same periods as the found vertebrate fossils, and correlations were made only for these samples. Sample C1 provides a single indicator for cold/well-oxygenated water (Orthocladiinae), which is supported by the presence of *Beremendia*, *Rhagapodemus* typical for temperate climate, and of *Cseria* and *Mimomys* that are water-related micro-mammals. Samples T1 and R4 include Oribatida invertebrates (genera *Oppiella*, *Miracarus* and *Suctobelbella*) that inhabit forest litter, shrublands, ecotone zones and grasslands, and vertebrates which indicate the presence of trees in wet forests and steppic habitats, typical habitats for *Myodes* and *Borsodia*. The presence of invertebrate drought-tolerant taxa in T5 indicates a landscape with shrubs and grassland during the late Early Pliocene. The presence of forest inhabitants in T1 and R4 correlated with the presence of cold/dry-associated vertebrates points to a colder climate during the Mid-Pleistocene. Between these two chronologically extreme samples, invertebrates were also identified in samples C1 and T2. Sample C1 corresponds to the advent of the Late Pliocene cooling and probably higher flow rates on the surface, which explains the presence of the chironomid. Sample T2 fits within the picture of forests mixed with open areas during the Early Pleistocene.

**Invertebrate fossils
from cave sediments**

O. T. Moldovan et al.

Title Page

Abstract

Introduction

Conclusions

References

Tables

Figures

◀

▶

◀

▶

Back

Close

Full Screen / Esc

Printer-friendly Version

Interactive Discussion



**Invertebrate fossils
from cave sediments**

O. T. Moldovan et al.

Title Page

Abstract

Introduction

Conclusions

References

Tables

Figures

◀

▶

◀

▶

Back

Close

Full Screen / Esc

Printer-friendly Version

Interactive Discussion



No pollen was found in the studied samples and sections, but detailed studies on the nearby Italian and peri-Mediterranean sites given in Bertini (2010) can be well correlated with the invertebrate fossils found in the Slovenian cave sediments (Table 2). During the Zanclean, the climate was warmer and drier or more humid than today, depending on the geographical latitude and altitude (Faquette et al., 2006); forest taxa of humid subtropical to warm temperate zones were dominant (Bertini, 2010). The general decrease of humidity and installation of drier conditions during the Piacenzian occurred prior to 2.5 Ma (Bertoldi et al., 1989). Alternations of forest vegetation and steppes, with typical open vegetation phases characterized the following early Pleistocene, during the Gelasian and the Calabrian (Bertini, 2010). In general, the floral composition and structure of vegetation of the Pliocene-Pleistocene are characterized by the rare appearance of new species and by spatial asynchronous events of disappearance of the same taxon (Bertini, 2010). Frequent changes in both climate and vegetation can explain the extinction of some of the identified invertebrate taxa in the cave sediments of Slovenia. In general, faunal changes depend on the environment, defined mostly by climate and vegetal associations. If changes are frequent and of relatively short duration, some of the taxa that are unable to adapt may get extinct, or evolve into different species. Oribatida is a group with a lower mobility than flying invertebrate species, and their migration can only be done over short distances, following the slowly migrating vegetation or vegetal associations. The identified new Oribatida species can be considered either members of an extinct faunal group with no relatives in the present fauna of southern Slovenia, or ancestors of a living species which have undergone evolution in the present-day habitats or in different areas nearby. Vegetation succession in time contributed to the settlement of a complex mosaic of different climates/biomes in the Mediterranean zone (Bertini, 2010). This situation documented for flora is supported by the invertebrates found in the cave sediments. The section that provided most of the specimens, in the Trhlovca Cave, yielded taxa indicative for mixtures of forests with open dry areas in all samples. As already documented by Finlayson et al. (2008) for more recent sediments, the environmental changes must be

taken into account only at small or medium scales. The use of invertebrate fossils from cave sediments as a proxy, even in more recent sediments, can provide information at small scales and must be associated with other proxies and preferably with more sites of the same region in order to provide paleoenvironmental information that would be significant at regional scale.

3.4 Implications for the reconstruction of karst evolution

Fossil invertebrates may yield valuable information concerning the origin of sediments, hydraulic regime and deposition rate, etc. According to Ericksen (1988), if the standing condition of the fossil is known, its endpoint can be used to infer some of the geological processes that acted on the body during its transport to the site of deposition. The presence of surface animals in pre-Quaternary interior facies of cave sediments is indicative for an intense karst evolution of the Dinaric karst, including the filling of a part of the cavities with sediment during the Tertiary. The very low abundance of fossils deposited in clastic cave sediments of the interior facies is well known (e.g., Horáček and Ložek, 1988). This fact is probably related to the runoff in the drainage area or to the hydraulics of the subterranean streams. Almost all of the studied invertebrate samples have at least one aquatic component, and all (with a single possible exception) are surface invertebrates, which were brought inside the caves by allogenic streams and deposited together with the sediments. The most common clastic sediments in the studied caves are different types of fine laminated clays and silts. They were deposited from floodwater suspended load under conditions of pulsed flow or cave lakes comparable with slackwater facies of Bosch and White (2004). This depositional process corresponds to more or less regular flooding of karst areas by sinking rivers. Mineral assemblages of the cave deposits were derived from highly homogenized weathering products of Eocene flysch sediments and soil cover on Paleocene and Cretaceous limestones (Zupan Hajna et al., 2008b). The tectonically-driven lowering of the regional base level was connected with the change in tectonic regime at ca. 6 Ma (Vrabec and Fodor, 2006). This caused a transition from an epiphreatic regime to a vadose one,

Invertebrate fossils from cave sediments

O. T. Moldovan et al.

Title Page

Abstract

Introduction

Conclusions

References

Tables

Figures

◀

▶

◀

▶

Back

Close

Full Screen / Esc

Printer-friendly Version

Interactive Discussion



followed by a decrease in hydraulic head in some cave systems or their higher-situated parts and a complete fill with fluvial sediments as a consequence (Mihevc, 2007; Zupan Hajna et al., 2008b).

As already mentioned, the presence of *Daphnia* sp. and its relatively good preservation in sample T5 indicates the existence of a system with low hydraulic head at the cave entrance and multiple flood events that contributed to the continuous deposition of varved and/or cyclically arranged sediments. The chironomid in sample C1 indicates a period of relatively high flow rate in a vadose regime. The chironomid was found at the same level as *Marifugia cavatica*, serpulid polychaetes attached to walls at the air/karst-water interface, still living in the caves of the Dinaric karst (for summary see Mihevc et al., 2001).

Pre-Quaternary invertebrate remains, abundant in marine settings and quite common in amber, are very rare and have as yet been reported in continental sediments only from Arctic environments (see a complete list in Elias, 2010). The depositional mechanisms and the low intensity of biochemical processes can explain the relatively good state of preservation of old invertebrate remains both in the cave sediments and Arctic lake sediments. Although the number of identified invertebrates at the studied Slovenian sites is small, their state of preservation is relatively good considering the age of the sediments. This may suggest a combination of: (1) a relatively short and slow transport to the site of deposition, (2) a rapid burial, i.e., a high sedimentation rate, and (3) subdued microbial and biochemical processes that could have altered the entire organisms.

4 Conclusions

Three sites of relic caves from the Classical Karst of Slovenia provided first evidence of Pliocene/Pleistocene invertebrate remains in continental clastic sediments from interior cave facies in temperate regions. These finds suggest that cave sediments can preserve yet another proxy for the assessment of paleoclimatic and paleoenvironmental

BGD

8, 3403–3434, 2011

Invertebrate fossils from cave sediments

O. T. Moldovan et al.

Title Page

Abstract

Introduction

Conclusions

References

Tables

Figures

◀

▶

◀

▶

Back

Close

Full Screen / Esc

Printer-friendly Version

Interactive Discussion



5 conditions. This new proxy may be important for a number of reasons: (i) the scarcity of vertebrate fossils in pre-Quaternary cave deposits; (ii) the need for cross-validation of inferred paleoenvironmental settings in the case of incomplete or ambiguous coeval proxies; (iii) the cave conditions that are prone to a better preservation of old chitinous invertebrates when compared to surface settings; (iv) its added-value as a source of information on speleogenesis and evolution of karst hydraulic regimes even for paleo-
10 karst settings.

Caves are known as systems with low-energy input from the surface and low-energy in situ production. This may hamper the use of fossil invertebrates from caves due to the relatively low chance of finding identifiable cave or surface specimens transported into caves. However, for the three described sites, a relatively low number of invertebrate specimens were successfully identified and dated by biostratigraphy-calibrated magnetostratigraphy back to ca. 1.77 to ca. 4.8 Ma, i.e., across the Pliocene/Pleistocene boundary. When cross-correlated with the coeval vertebrate fauna, these findings support the idea of a colder phase associated with the Pliocene/Pleistocene transition, while also bringing new insights on the regional karst evolution.
15

Acknowledgements. The authors are grateful to Ilse Bartsch, Karina Battes, Steve Brook, Mirela Cîmpean, Bálint Marko, Laura Momeu for the help with taxa recognition and ecological information. Jiří Adamovič has kindly helped with the English revision of the manuscript. This study was funded through the KARSTHIVES Project PCCE_ID_31/2010 funded by CNCS-UEFISCDI (Romania; granted to SC), Grant Agency AS CR No. IAA300130701 (Paleomagnetic research of karst sediments: paleotectonic and geomorphological implications; granted to PB) and the Institutional Research Plan No. AV0Z30130516 of the GLI AS CR, v. v. i.
20

BGD

8, 3403–3434, 2011

Invertebrate fossils from cave sediments

O. T. Moldovan et al.

Title Page

Abstract

Introduction

Conclusions

References

Tables

Figures

◀

▶

◀

▶

Back

Close

Full Screen / Esc

Printer-friendly Version

Interactive Discussion



References

- Bastin, B.: L'analyse pollinique des stalagmites: une nouvelle possibilité d'approche des fluctuations climatiques du Quaternaire, *Annals. Soc. Geol. Belgique*, 102, 13–19, 1978.
- Bastin, B., Cordy, J.-M., Gewalt, M., and Otte, M.: Fluctuations climatique enregistrées depuis 250 000 ans dans les couches de remplissage de la Grotte Scladina (Province de Namur, Belgique), *Bull. Assoc. Franc. Etude Quatern.*, 1/2, 168–177, 1986.
- Behan-Pelletier, V. M.: Oribatid mite biodiversity in agroecosystems: role for Bioindication, *Agr. Ecosyst. Environ.*, 74, 411–423, 1999.
- Bertini, A.: Pliocene to Pleistocene palynoflora and vegetation in Italy: State of the art, *Quatern. Int.*, 225, 5–24, 2010.
- Bertoldi, R., Rio, D., and Thunell, R.: Pliocene-Pleistocene vegetational and climatic evolution of the south-central Mediterranean, *Palaeogeogr. Palaeoclimatol.*, 72, 263–275, 1989.
- Birks, H. J. B.: Quantitative palaeoenvironmental reconstructions, in: *Statistical Modeling of Quaternary Science Data*, edited by: Maddy, D. and Brew, J. S., Quaternary Research Association, Cambridge, 1995.
- Bosák, P.: Karst processes from the beginning to the end: how can they be dated?, in: *Evolution of Karst: From Prekarst to Cessation*, edited by: Gabrovšek, F., *Carsologica*, Založba ZRC, Postojna-Ljubljana, 2002.
- Bosák, P.: Karst processes and time, *Geologos*, 14, 15–24, 2008.
- Bosák, P., Ford, D. C., Głazek, J., and Horáček, I. (Eds.): *Paleokarst. A Systematic and Regional Review*, Elsevier-Academia, Amsterdam-Praha, 1989.
- Bosák, P., Pruner, P., and Zupan Hajna, N.: Paleomagnetic research of cave sediments in SW Slovenia, *Acta Carsologica*, 27, 151–179, 1998.
- Bosák, P., Mihevc, A., Pruner, P., Melka, K., Venhodová, D., and Langrová, A.: Cave fill in the Črnotiče Quarry, SW Slovenia: Palaeomagnetic, mineralogical and geochemical study, *Acta Carsologica*, 28, 15–39, 1999.
- Bosák, P., Pruner, P., Mihevc, A., and Zupan Hajna, N.: Magnetostratigraphy and unconformities in cave sediments: case study from the Classical Karst, SW Slovenia, *Geologos*, 5, 13–30, 2000.
- Bosák, P., Pruner, P., and Kadlec, J.: Magnetostratigraphy of cave sediments: application and limits, *Stud. Geophys. Geod.*, 47, 301–330, 2003.

BGD

8, 3403–3434, 2011

Invertebrate fossils from cave sediments

O. T. Moldovan et al.

Title Page

Abstract

Introduction

Conclusions

References

Tables

Figures

◀

▶

◀

▶

Back

Close

Full Screen / Esc

Printer-friendly Version

Interactive Discussion



Invertebrate fossils from cave sediments

O. T. Moldovan et al.

Title Page

Abstract

Introduction

Conclusions

References

Tables

Figures

◀

▶

◀

▶

Back

Close

Full Screen / Esc

Printer-friendly Version

Interactive Discussion



- Bosák, P., Mihevc, A., and Pruner, P.: Geomorphological evolution of the Podgorski Karst, SW Slovenia: Contribution of magnetostratigraphic research of the Črnotiče II site with *Marifugia* sp., *Acta Carsologica*, 33, 175–204, 2004.
- Bosch, R. F. and White, W. B.: Lithofacies and transport of clastic sediments in karstic aquifers, in: *Studies of Cave Sediments. Physical and Chemical Records of Paleoclimate*, edited by: Sasowsky, I. D. and Mylroie, J., Kluwer Academic/Plenum Publishers, New York, 2004.
- Botrell, S.: Organic carbon concentration profiles in recent cave sediments: Records of agricultural pollution or diagenesis?, *Environ. Pollut.*, 91, 325–332, 1996.
- Brinkmann, R. and Reeder, P.: The relationship between surface soils and cave sediments: an example from west central Florida, USA, *Cave Karst Sci.*, 22, 95–102, 1995.
- Cande, S. C. and Kent, D. V.: Revised calibration of the geomagnetic polarity timescale for the Late Cretaceous and Cenozoic, *J. Geophys. Res.*, 100, 6093–6095, 1995.
- Carrión, J. S.: A palaeoecological study in the western Mediterranean area: the Upper Pleistocene pollen record from Cova Benieto (Alicante, Spain), *Palaeogeogr., Palaeoclimatol., 92*, 1–14, 1992a.
- Carrión, J. S.: Late Quaternary pollen sequence from Carihuela Cave, south-eastern Spain, *Rev. Palaeobot. Palynol.*, 71, 37–77, 1992b.
- Carrión, J. S. and Munuera, M.: Upper Pleistocene Palaeoenvironmental change in Eastern Spain: new pollen-analytical data from Cova Beneito (Alicante), *Palaeogeogr. Palaeoclimatol.*, 128, 287–299, 1997.
- Carrión, J. S., Dupré, M., Fumal, M. P., and Montes, R.: A Palaeoenvironmental study in semi-arid southeastern Spain: the palynological and sedimentological sequence at Perneras Cave (Lorca; Murcia), *J. Archaeol. Sci.*, 22, 355–367, 1995.
- Carrión, J. S., Fuentes, N., García, M. S., González-Sampériz, P., Finlayson, C., and Riquelme, J. A.: Pollen analysis of coprolites from Gorham's Cave depicts mosaic Pleistocene landscapes in Gibraltar, in: *Cuaternario Mediterraneo y Poblamiento de Homínidos*, edited by: Rodríguez Vidal, J., Finlayson, C., and Giles Pacheco, F., AEQUA, Madrid, 2005.
- Courty, M. A. and Vallverdú, J.: The microstratigraphic record of abrupt climate changes in cave sediments of the Western Mediterranean, *Geoarchaeology*, 16, 467–500, 2001.
- Dimitriadis, S. and Cranston, P. S.: An Australian Holocene climate reconstruction using Chironomidae from a tropical volcanic maar lake, *Palaeogeogr. Palaeoclimatol.*, 176, 109–131, 2001.
- Elias, S. A.: Late Tertiary and Early Quaternary, in: *Encyclopedia of Quaternary Science*, edited by: Elias, A. S., Elsevier, 2007.

**Invertebrate fossils
from cave sediments**

O. T. Moldovan et al.

[Title Page](#)[Abstract](#)[Introduction](#)[Conclusions](#)[References](#)[Tables](#)[Figures](#)[◀](#)[▶](#)[◀](#)[▶](#)[Back](#)[Close](#)[Full Screen / Esc](#)[Printer-friendly Version](#)[Interactive Discussion](#)

- Elias, S. A.: *Advances in Quaternary Entomology, Developments in Quaternary Science*, 12, Elsevier Science, 2010.
- Elwood, B. K., Petruso, K. M., Harrold, F. B., and Korkuti, M.: Paleoclimate characterization and intra-side correlation using magnetic susceptibility measurements: an example from Konispol Cave, Albania, *J. Field Archaeol.*, 23, 263–271, 1996.
- Engels, S. S., Bohncke, J. P., Heiri, O., and Nyman, M.: Intraregional variability in chironomid-inferred temperature estimates and the influence of river inundations on lacustrine chironomid assemblages, *J. Paleolimnol.*, 40, 129–142, 2008.
- Eggermont, H., Kennedy, D., Hasiotis, S. T., Verschuren, D., and Cohen, A.: Distribution of living larval Chironomidae (Insecta: Diptera) along a depth transect at Kigoma Bay, Lake Tanganyika: implications for palaeoenvironmental reconstruction, *Afr. Entomol.*, 16, 162–184, 2008.
- Erickson, J. M.: Fossil oribatid mites as tools for Quaternary paleoecologists: Preservation quality, quantities, and taphonomy, in: *Late Pleistocene and Early Holocene Paleoecology and Archaeology of the Eastern Great Lakes Region*, edited by: Laub, R. S., Miller, N. G., and Steadman, D. W., 33, 207–226, 1988.
- Erickson, J. M. and Platt Jr., R. B.: Oribatid mites, in: *Encyclopedia of Quaternary Science*, edited by: Elias, A. S., Elsevier, 2007.
- Fauquette, S., Suc, J. P., Bertini, A., Popescu, S. M., Warny, S., Bachiri Taoufiq, N., Perez Villa, M. J., Chikhi, H., Feddi, N., Subally, D., Clauzon, G., and Ferrier, J.: How much did climate force the Messinian salinity crisis? Quantified climatic conditions from pollen records in the Mediterranean region, *Palaeogeogr. Palaeocl.*, 238, 281–301, 2006.
- Finlayson, G., Finlayson, C., Giles Pacheco, F., Rodriguez Vidal, J., Carrión, J. S., and Recio Espejo, J. M.: Caves as archives of ecological and climatic changes in the Pleistocene – The case of Gorham’s cave, Gibraltar, *Quatern. Int.*, 181, 55–63, 2008.
- Ford, D. C. and Williams, P. W.: *Karst geomorphology and hydrology*, Unwin Hyman, London, 1989.
- Ford, D. C. and Williams, P. W.: *Karst Hydrology and Geomorphology*, Wiley, Chichester, 2007.
- Gandouin, E., Maasri, A., Van Vliet-Lanoë, B., and Franque, E.: Chironomid (Insecta: Diptera) assemblages from a gradient of lotic and lentic waterbodies in river floodplains of France: a methodological tool for paleoecological applications, *J. Paleolimnol.*, 35, 149–166, 2006.
- Gergócs, V. and Hufnagel, L.: Application of oribatod mites as indicators (review), *Appl. Ecol. Env. Res.*, 7, 79–98, 2009.

- Gulvik, M. E.: Mites (Acari) As Indicators of Soil Biodiversity and Land Use Monitoring: a Review, *Pol. J. Ecol.*, 55, 415–440, 2007.
- Haywood, A. M.: Pliocene climates, in: *Encyclopedia of paleoclimatology and ancient environments*, edited by: Gornitz, V., Springer, The Netherlands, 2009.
- 5 Holmes, J. A.: Ostracoda, in: *Tracking Environmental Change Using Lake Sediments, Vol. 4, Zoological Indicators*, edited by: Smol, J. P., Birks, H. J. B., and Last, W. M., Kluwer Academic Publishers, Dordrecht, 2001.
- Horáček, I. and Bosák, P.: Special characteristics of paleokarst studies, in: *Paleokarst. A Systematic and Regional Review*, edited by: Bosák, P., Ford, D. C., Głazek, J., and Horáček, I., Elsevier-Academia, Amsterdam-Praha, 1989.
- 10 Horáček, I. and Ložek, V.: Palaeozoology and the Mid-European Quaternary past: scope of the approach and selected results, *Rozprawy Československé akademie věd, řada matematických a přírodních věd*, 98(4), 1–102, 1988.
- Horáček, I., Mihevc, A., Zupan Hajna, N., Pruner, P., and Bosák, P.: Fossil vertebrates and paleomagnetism update one of the earlier stages of cave evolution in the Classical Karst, Slovenia: Pliocene of Črnotiče II site and Račiška pečina, *Acta Carsologica*, 37, 451–466, 2007.
- 15 Howard, L. C., Wood, P. J., Greenwood, M. T., and Rendell, H. M.: Reconstructing riverine paleo-flow regimes using subfossil insects (Coleoptera and Trichoptera): the application of the LIFE methodology to paleochannel sediments, *J. Paleolimnol.*, 42, 453–466, 2009.
- Korhola, A.: Distribution patterns of Cladocera in subarctic Fennoscandian lakes and their potential in environmental reconstructions, *Ecography*, 22, 357–373, 1999.
- Korhola, A., Olander, H., and Blom, T.: Cladoceran and chironomid assemblages as quantitative indicators of water depth in subarctic Fennoscandian lakes, *J. Paleolimnol.*, 24, 43–53, 2000.
- 20 Kukla, J., and Ložek, V.: To the problem of investigation of the cave deposits, *Československý kras*, 11, 19–83, 1958.
- Kyrle, G.: *Grundriss der theoretischer Speläologie*, Österreichische Staatsdruckerei, Wien, 1923.
- 30 Lebrun, P. and van Straalen, N. M.: Oribatid mites: prospects for their use in Ecotoxicology, *Exp. Appl. Acarol.*, 19, 361–379, 1995.
- Lisiecki, L. E. and Raymo, M. E.: A Pliocene-Pleistocene stack of 57 globally distributed benthic $d^{18}O$ records, *Paleoceanography*, 20, PA1003, doi:10.1029/2004PA001071, 2005.

**Invertebrate fossils
from cave sediments**O. T. Moldovan et al.

[Title Page](#)[Abstract](#)[Introduction](#)[Conclusions](#)[References](#)[Tables](#)[Figures](#)[◀](#)[▶](#)[◀](#)[▶](#)[Back](#)[Close](#)[Full Screen / Esc](#)[Printer-friendly Version](#)[Interactive Discussion](#)

- Norton, R. A. and Palmer, S. C.: The distribution, mechanisms, and evolutionary significance of parthenogenesis in oribatid mites, in: *The Acari: Reproduction, Development and Life-History Strategies*, edited by: Schuster, R. and Murphy, P. W., Chapman and Hall, London, 1991.
- 5 Luoto, T. P.: An assessment of lentic ceratopogonids, ephemeropterans, trichopterans and oribatid mites as indicators of past environmental change in Finland, *Ann. Zool. Fenn.*, 46, 259–270, 2009.
- Mihevc, A.: Fosilne cevke iz brezstrove jame – verjetno najstarejši ostanki jamskego cevkarja *Marifugia* (Annelida: Polychaeta). The fossilized tubes from the roofless cave – probably the
10 oldest known remains of the cave worm *Marifugia* (Annelida: Polychaeta), *Acta Carsologica*, 29, 261–270, 2000.
- Mihevc, A.: The age of Karst relief in west Slovenia, *Acta Carsologica*, 36, 35–44, 2007.
- Mihevc, A., Sket, B., Pruner, P., and Bosák, P.: Fossil remains of a cave tube worm (Polychaeta: Serpulidae) in an ancient cave in Slovenia, *Proc. 13th International Speleological Congress, 4th Speleological Congress of Latin America and the Caribbean, 26th Brazilian Congress of Speleology, Brasilia, 15–22 July 2001*, 2, 20–24, 2001.
- 15 Panno, S. V., Curry, B. B., Wang, H., Hackley, K. C., Liu, C. L., Lundstrom, C., and Zhou, J.: Climate change in southern Illinois, USA, based on the age and $\delta^{13}\text{C}$ of organic matter in cave sediments, *Quatern. Res.*, 61, 301–313, 2004.
- 20 Placer, L.: Contribution to the macrotectonic subdivision of the border region between Southern Alps and External Dinarides, *Geologija*, 41, 223–255, 1999.
- Polk, J. S., van Beynen, P. E., and Reeder, P. P.: Late Holocene environmental reconstruction using cave sediments from Belize, *Quatern. Res.*, 68, 53–63, 2007.
- Polyak, V. J., Cokendolpher, J. C., Norton, R. A., and Asmerom, Y.: Wetter and cooler late
25 Holocene climate in the southwestern United States from mites preserved in stalagmites, *Geology*, 29, 643–646, 2001.
- Prentice, I. C., Guiot, J., Huntley, B., Jolly, D., and Cheddadi, R.: Reconstructing biomes from palaeoecological data: A general method and its application to European pollen data at 0 and 6 ka, *Clim. Dynam.*, 12, 185–194, 1996.
- 30 Rautio, M.: Cladocera, in: *Encyclopedia of Quaternary Science*, edited by: Elias, A. S., Elsevier, 2007.
- Robinson, M., Dowsett, H. J., and Chandler, M. A.: Pliocene role in assessing future climate impacts, *EOS Transactions*, 89, 501–502, 2008.

**Invertebrate fossils
from cave sediments**

O. T. Moldovan et al.

[Title Page](#)[Abstract](#)[Introduction](#)[Conclusions](#)[References](#)[Tables](#)[Figures](#)[◀](#)[▶](#)[◀](#)[▶](#)[Back](#)[Close](#)[Full Screen / Esc](#)[Printer-friendly Version](#)[Interactive Discussion](#)

**Invertebrate fossils
from cave sediments**

 O. T. Moldovan et al.

[Title Page](#)
[Abstract](#)
[Introduction](#)
[Conclusions](#)
[References](#)
[Tables](#)
[Figures](#)
[◀](#)
[▶](#)
[◀](#)
[▶](#)
[Back](#)
[Close](#)
[Full Screen / Esc](#)
[Printer-friendly Version](#)
[Interactive Discussion](#)


- Salzmann, U., Haywood, A. M., and Lunt, D. J.: The past is a guide to the future? Comparing Middle Pliocene vegetation with predicted biome distributions for the twenty-first century, *Philos. T. R. Soc. A*, 367, 189–204, 2009.
- Sasowsky, I.: Clastic sediments in caves – imperfect recorders of processes in karst, *Acta Carsologica*, 36, 143–149, 2007.
- Sasowsky, I. D. and Mylroie, J. (Eds.): *Studies of Cave Sediments, Physical and Chemical Records of Paleoclimate*, Kluwer Academic/Plenum Publishers, New York, 2004.
- Solhøy, I. W. and Solhøy, T.: The fossil oribatid mite fauna (Acari: Oribatida) in late-glacial and early-Holocene sediments in Kråkenes Lake, western Norway, *J. Paleolimnol.*, 23, 35–47, 2000.
- Solhøy, T.: Oribatid mites, in: *Tracking Environmental Change Using Lake Sediments, Vol. 4., Zoological Indicators*, edited by: Smol, J. P., Birks, H. J. B., and Last, W. M., Kluwer Academic Publishers, Dordrecht, 2001.
- Smol, J. P.: *Pollution of Lakes and Rivers: a Paleoenvironmental Perspective*, Oxford University Press, Oxford, 2002.
- Sroubek, P., Diehl, J. F., Kadlec, J., and Valoch, K.: A Late Pleistocene palaeoclimate record based on mineral magnetic properties of the entrance facies sediments of Kulna Cave, Czech Republic, *Geophys. J. Int.*, 147, 247–262, 2001.
- Szeroczyńska, K. and Zawisza, E.: *Daphnia* remains from the sediments of lake Somaslampi (NW Finnish Lapland) and Lake Wigry (NE Poland), *Studia Quaternaria*, 22, 55–57, 2005.
- Taylor, A. R. and Wolters, V.: Responses of oribatid mite communities to summer drought: The influence of litter type and quality, *Soil Biol. Biochem.*, 37, 2117–2130, 2005.
- Turney, C. S. M., Bird, M. I., and Roberts, R. G.: Elemental $\delta^{13}\text{C}$ at Allen's Cave, Nullarbor Plain, Australia: assessing post-depositional disturbance and reconstructing past environments, *J. Quaternary Sci.*, 16, 779–784, 2001.
- Vrabec, M. and Fodor, L.: Late Cenozoic tectonics of Slovenia: structural styles at the North-eastern corner of the Adriatic microplate, in: *The Adria microplate: GPS geodesy, tectonics and hazards*, edited by: Pinter, N., Greneczy, G., Weber, J., Stein, S., and Medak, D., NATO Science Series, IV, Earth and Environmental Sciences, Springer, Dordrecht, 61, 151–168, 2006.
- Walker, I. R.: Chironomid overview, in: *Encyclopedia of Quaternary Science*, edited by: Elias, A. S., Elsevier, 2007.

**Invertebrate fossils
from cave sediments**

O. T. Moldovan et al.

[Title Page](#)[Abstract](#)[Introduction](#)[Conclusions](#)[References](#)[Tables](#)[Figures](#)[I◀](#)[▶I](#)[◀](#)[▶](#)[Back](#)[Close](#)[Full Screen / Esc](#)[Printer-friendly Version](#)[Interactive Discussion](#)

- Walker, R.: Midges: Chironomidae and related Diptera, in: Tracking Environmental Change Using Lake Sediments, Vol. 4, Zoological Indicators, edited by: Smol, J. P., Birks, H. J. B., and Last, W. M., Kluwer Academic Publishers, Dordrecht, 2001.
- White, W. B.: Cave sediments and palaeoclimate, *J. Cave Karst Stud.*, 69, 76–93, 2007.
- 5 Zupan Hajna, N., Mihevc, A., Pruner, P., and Bosák, P.: Cave sediments from the Postojnska Planinska cave system (Slovenia): evidence of multiphase evolution in epiphreatic zone, *Acta Carsologica*, 37, 63–86, 2008a.
- Zupan Hajna, N., Mihevc, A., Pruner, P., and Bosák, P.: Palaeomagnetism and Magnetostratigraphy of Karst ediments in Slovenia, *Carsologica*, Založba ZRC, Ljubljana, 8, 266 pp., 2008b.
- 10 Zupan Hajna, N., Mihevc, A., Pruner, P., and Bosák, P.: Palaeomagnetic research on karst sediments in Slovenia, *Int. J. Speleol.*, 39, 47–60, 2010.

Invertebrate fossils
from cave sediments

O. T. Moldovan et al.

Title Page

Abstract

Introduction

Conclusions

References

Tables

Figures

I◀

▶I

◀

▶

Back

Close

Full Screen / Esc

Printer-friendly Version

Interactive Discussion

**Table 1.** A list of invertebrate fossils in the samples of cave sediments in Slovenia (only samples with identifiable animal remains are shown).

Site/Sample	Short description of the sediment	Identified taxa	No. individuals	Observation
1 Trhlovca 1 (T1)	red clay	<i>Miracarus</i> n. sp.	1	new species
2 Trhlovca 2 (T2)	beige clay	<i>Opiella</i> (cf. <i>Rhinoppia</i>) n. sp. 1 <i>Dissorhina</i> n. sp.	1 1	new species specimen in poor condition
3 Trhlovca 5 (T5)	red clay	<i>Daphnia</i> sp. <i>Dissorhina</i> n. sp. <i>Zygoribatula frisiae</i> <i>Tetramorium</i> sp. Insecta larvae	1 1 1 1 1	new species cosmopolite cosmopolite unidentified
4 Račiška 4 (R4)	red clay	<i>Oppiella</i> (<i>Rhinoppia</i>) n. sp. 2 <i>Miracarus</i> n. sp. <i>Suctobelbella</i> sp. ?	4 2 1	new species new species specimen in poor condition
5 Črnotiče 1 (C1)	yellow clay	Orthocladinae Astigmatida?	1 1	incomplete specimen in poor condition

Invertebrate fossils from cave sediments

O. T. Moldovan et al.

Title Page

Abstract

Introduction

Conclusions

References

Tables

Figures

◀

▶

◀

▶

Back

Close

Full Screen / Esc

Printer-friendly Version

Interactive Discussion



Table 2. Taxa found in cave sediments of Slovenia with the corresponding vegetation, sediment type and origin, and vertebrate fossils.

Stage	TAXA			Environment	Sediment origin	Vertebrates
	Trhlovca	Račiška	Črnotiče			
Upper Pliocene/ Lower Pleistocene	<i>Miracarus</i> <i>Opiella</i> <i>Dissorhina</i>	–	–	forest, ecotone zones	surface, fluvial	–
–	–	<i>Oppiella</i> <i>Miracarus</i> <i>Suctobelbella</i> (<i>Potamon</i> *)	–	forest, ecotone zones, grasslands + river	surface, fluvial	(fish teeth*), micromammals living in steppe and tree habitats
–	–	–	Orthoclaadiinae (<i>Marifugia</i> <i>cavatica</i> *)	cold, well oxygenated water	surface, fluvial	(fish teeth*), micromammals living in tree + riverside habitats
Lower Pliocene	<i>Daphnia</i> , <i>Dissorhina</i> , <i>Zygoribatula</i> <i>Tetramorium</i>	–	–	dry landscape with shrubs + river	surface, fluvial	–

* mentioned in Horáček et al. (2007).

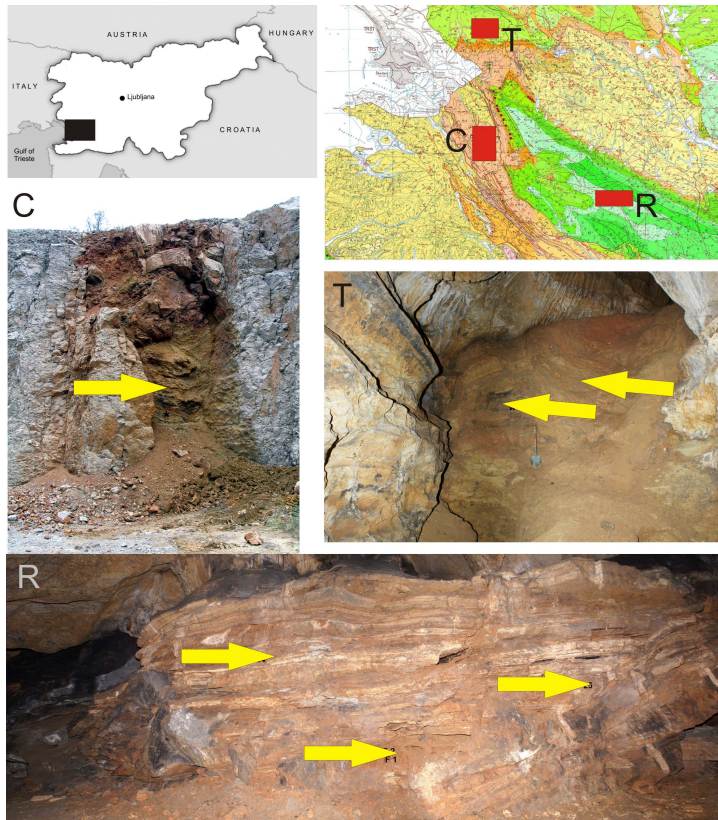


Fig. 1. Location of the studied sites in Slovenia (see the geological map in the upper right corner; map after Pleničar et al., 1969): C = fossil cave in the Črnotiče Quarry (the section is represented by an unroofed cave filled with yellow fluvial sediment covered by red clay with flowstone), T = Trhlovca Cave (the oldest part of the section with fluvial sediments), R = Račiška pečina Cave (the section is an alternation of flowstone and clay deposits; Photos by A. Mihevc).

**Invertebrate fossils
from cave sediments**

O. T. Moldovan et al.

Title Page

Abstract Introduction

Conclusions References

Tables Figures

◀ ▶

◀ ▶

Back Close

Full Screen / Esc

Printer-friendly Version

Interactive Discussion



Invertebrate fossils
from cave sediments

O. T. Moldovan et al.

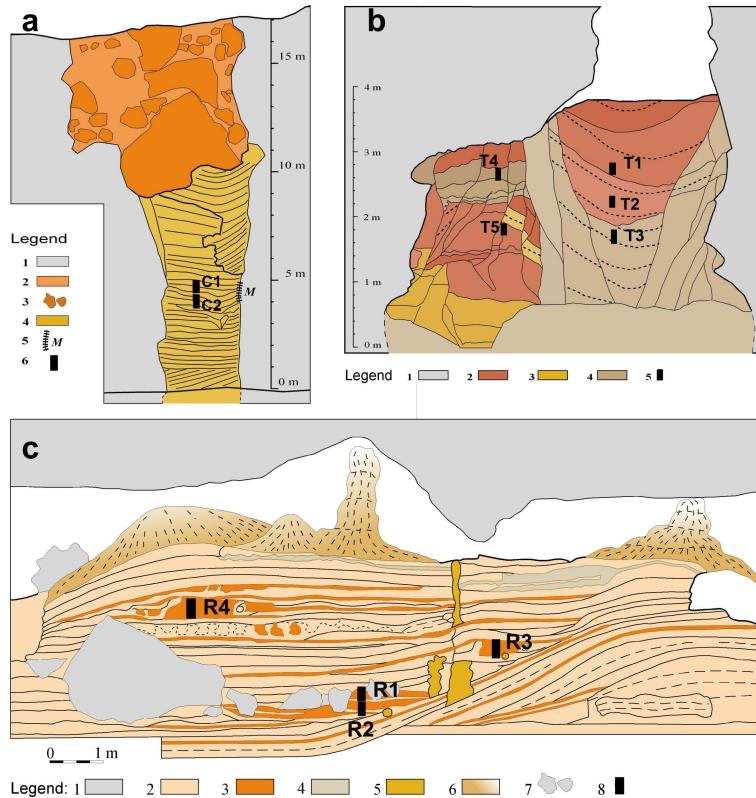


Fig. 2. Lithological sections at the studied sites: **(a)** a section in the filled horizontal cave passage cut by the Črnotiče Quarry (the original section): 1 = limestone, 2 = flowstone mixed with reddish clay, 3 = large flowstone boulders, 4 = allogenic laminated fluvial sediment, 5 = wall and sediment with tubes of *Marifugia cavatica*, 6 = sampling points (C1–C2; modified from Bosák et al., 2004). **(b)** A section exposed in the Trhlovca Cave, several meters in thickness: 1 = limestone, 2 = reddish younger fill of clay, silt and fine sand, 3 = clays lighter in color, with a higher sand proportion, 3 = yellowish brown sandy clay, 4 = brownish to ochre sandy clay, 5 = sampling points (T1–T5; modified from Bosák et al., 2006); **(c)** Račiška pečina Cave section: 1 = limestone 2 = flowstone, 3 = red clay, silt and sand, 4 = brown clays with gravel and cave bear bones, 5 = stalagmites in flowstone, 6 = speleothems on the section surface, 7 = collapsed limestone blocks, 8 = sampling points (R1–R4; modified from Zupan Hajna et al., 2008b).

Title Page

Abstract

Introduction

Conclusions

References

Tables

Figures

◀

▶

◀

▶

Back

Close

Full Screen / Esc

Printer-friendly Version

Interactive Discussion



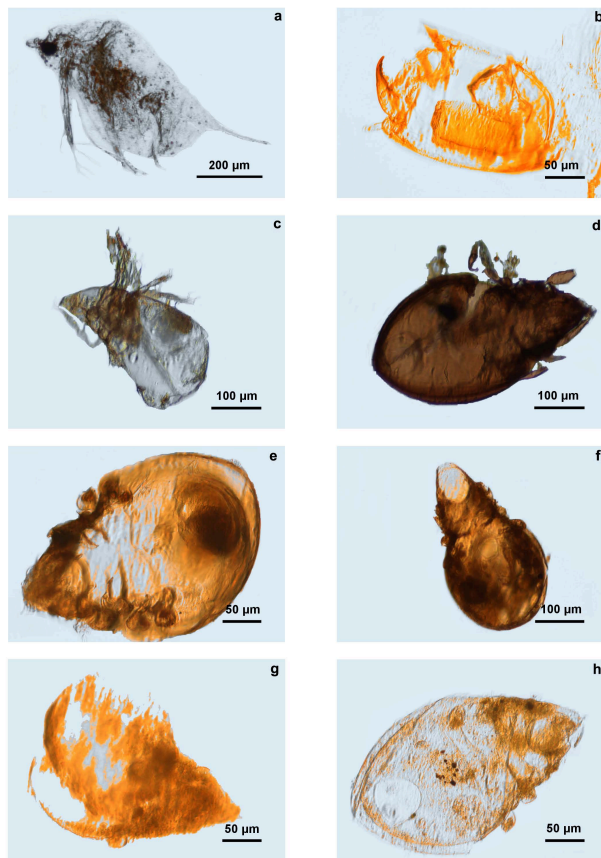


Fig. 3. Light microscope photographs of the identified fossil invertebrates in the cave sediments in Slovenia: **(a)** *Daphnia* sp.; **(b)** Orthoclaadiinae; **(c)** *Dissorhina* n. sp.; **(d)** *Zygoribatula frisiae*; **(e)** *Miracarus* n. sp.; **(f)** *Opiella* (cf. *Rhinoppia*) n. sp. 1; **(g)** *Suctobelbella* sp. ?; **(h)** *Oppiella* (*Rhinoppia*) n. sp. 2.

**Invertebrate fossils
from cave sediments**

O. T. Moldovan et al.

Title Page

Abstract

Introduction

Conclusions

References

Tables

Figures

◀

▶

◀

▶

Back

Close

Full Screen / Esc

Printer-friendly Version

Interactive Discussion



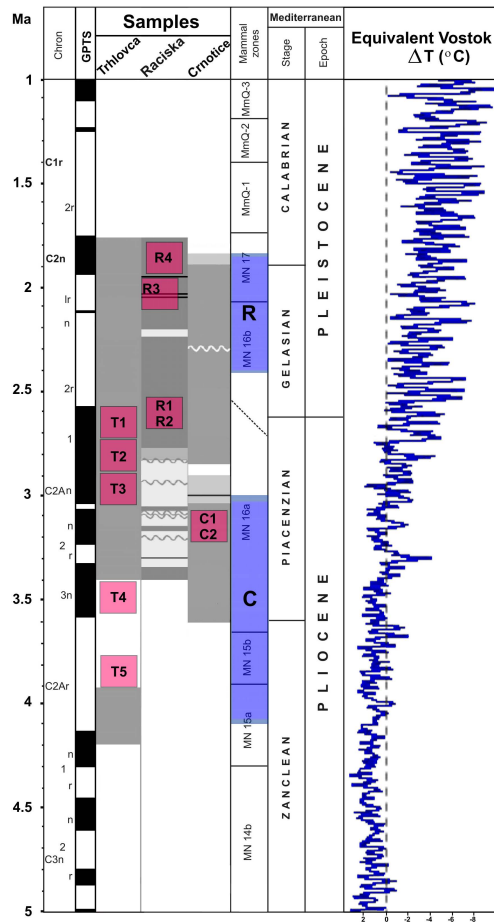


Fig. 4. A correlation of the obtained magnetostratigraphic results with the standard paleomagnetic scale (GPTS; after Cande and Kent, 1995; modified after Horáček et al., 2007), mammal zones, temperature estimates (after Lisiecki and Raymo, 2005) and position of the samples with invertebrates (in red): T = Trhlovca Cave, R = Račiška Cave, C = fossil cave in the Črnotice Quarry and vertebrates (in blue).

Invertebrate fossils from cave sediments

O. T. Moldovan et al.

Title Page

Abstract Introduction

Conclusions References

Tables Figures

◀ ▶

◀ ▶

Back Close

Full Screen / Esc

Printer-friendly Version

Interactive Discussion



Invertebrate fossils from cave sediments

O. T. Moldovan et al.

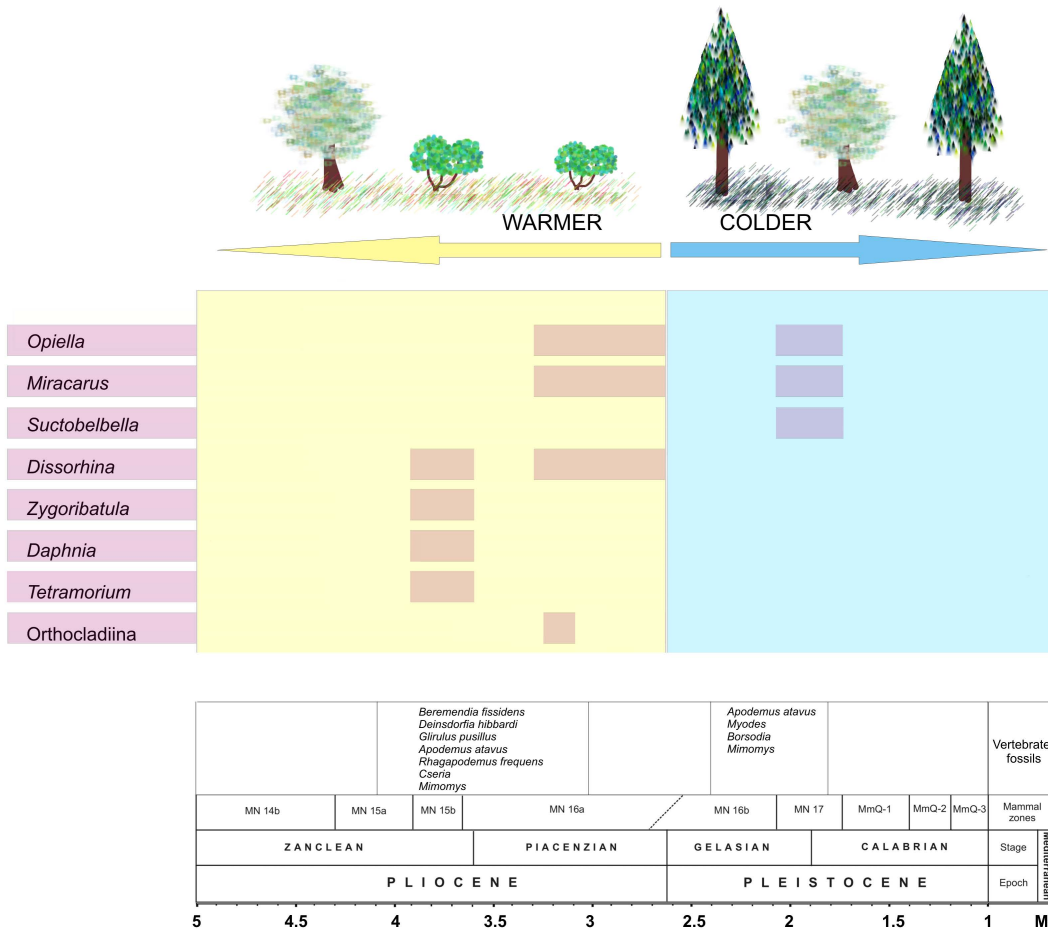


Fig. 5. Invertebrate fossils found in the studied caves, correlated with climate, vegetation and fossil vertebrates.

Title Page

Abstract Introduction

Conclusions References

Tables Figures

◀ ▶

◀ ▶

Back Close

Full Screen / Esc

Printer-friendly Version

Interactive Discussion