

**Relating ring width of  
Mediterranean  
evergreen species**

W. Nijland et al.

# Relating ring width of Mediterranean evergreen species to seasonal and annual variations of precipitation and temperature

W. Nijland<sup>1</sup>, E. Jansma<sup>1,2</sup>, E. A. Addink<sup>1</sup>, M. Domínguez Delmás<sup>3</sup>, and S. M. De Jong<sup>1</sup>

<sup>1</sup>Utrecht University, Faculty of Geosciences, Utrecht, The Netherlands

<sup>2</sup>Rijksdienst voor het Cultureel Erfgoed, Amersfoort, The Netherlands

<sup>3</sup>Stichting Ring, Nederlands centrum voor dendrochronologie, Amersfoort, The Netherlands

Received: 5 November 2010 – Accepted: 29 December 2010 – Published: 13 January 2011

Correspondence to: W. Nijland (geo.uu@wiebenijland.nl)

Published by Copernicus Publications on behalf of the European Geosciences Union.

Title Page

Abstract

Introduction

Conclusions

References

Tables

Figures

◀

▶

◀

▶

Back

Close

Full Screen / Esc

Printer-friendly Version

Interactive Discussion



## Abstract

Plant growth in Mediterranean landscapes is limited by the typical summer-dry climate. Forests in these areas are only marginally productive and may be quite susceptible to modern climate change. To improve our understanding of forest sensitivity to annual and seasonal climatic variability, we use tree-ring measurements of two Mediterranean evergreen tree species: *Quercus ilex* and *Arbutus unedo*. We sampled 34 stems of these species on three different types of substrates in the Payne study area in Southern France. The resulting chronologies were analysed in combination with 38 years of monthly precipitation and temperature data to reconstruct the response of stem growth to climatic variability. Results indicate a strong positive response to May and June precipitation, as well as a significant positive influence of early-spring temperatures and a negative growth response to summer heat. Comparison of the data with more detailed productivity measurements in two contrasting years confirms these observations and shows a strong productivity limiting effect of low early-summer precipitation. The results show that tree-ring data from *Q. ilex* and *A. unedo* can provide valuable information about the response of these tree species to climate variability, improving our ability to predict the effects of climate change in Mediterranean ecosystems.

## 1 Introduction

Mediterranean regions are regarded as an outstandingly rich area with respect to history, geography and biodiversity. Mediterranean areas are species-rich and form original bio-geographic regions due to a unique combination of climate, relief, soil and long-term human use of the landscape (Naveh and Kutiel, 1990). The Mediterranean is also a very attractive place for living and recreation. Pressure on the Mediterranean environment and water resources is therefore high and generally increasing (Grenon and Batisse, 1989; UNEP, 2009).

**BGD**

8, 355–383, 2011

## Relating ring width of Mediterranean evergreen species

W. Nijland et al.

Title Page

Abstract

Introduction

Conclusions

References

Tables

Figures

◀

▶

◀

▶

Back

Close

Full Screen / Esc

Printer-friendly Version

Interactive Discussion



## Relating ring width of Mediterranean evergreen species

W. Nijland et al.

Title Page

Abstract

Introduction

Conclusions

References

Tables

Figures



Back

Close

Full Screen / Esc

Printer-friendly Version

Interactive Discussion



Forest growth in Mediterranean environments is mostly water limited because of the warm, dry summers. This strong limitation results in slow succession rates and climax vegetations characterized by moderate or low above-ground biomass (di Castri and Mooney, 1973; Rambal, 2001). The predicted climate change for the Mediterranean countries consists of an increase of the extreme character, including longer periods of drought, more concentrated rainfall, and increased mean temperatures (Hertig and Jacobeit, 2008; Gao and Giorgi, 2008; Gibelin and Déqué, 2003). This will promote drought stress and may lead to a decrease in vegetation productivity. Mediterranean ecosystems are very sensitive to climate change, because growth is already strongly limited and forests are only marginally productive. Small changes in water availability and temperature may have considerable impacts on the resilience of the present natural vegetation types. Mediterranean landscapes have a worldwide significance because their ecosystems are widely recognized as biodiversity hotspots, with a species density surpassed only in tropical forests (Gomez-Campo, 1985; Vogiatzakis et al., 2006; Medial and Quezel, 1999). Apart from its ecological value, vegetation cover also protects against soil erosion, provides food for livestock and decreases flooding risks by interception and retention of precipitation. Because vegetation has so many functions and effects on the landscape, any changes in vegetation cover or productivity will have a large impact on the ecology as well as for the human inhabitants.

To accurately predict the possible effects of climate change on Mediterranean forest ecosystems it is important to understand the relationship between plant growth and the most important climate variables. The main question in this context is: “which climatic variables most strongly affect vegetation productivity?” This study investigates the local relationship between annual vegetation productivity of Mediterranean trees and meteorological variables (i.e. annual and seasonal variations of rainfall and temperature).

Climate-productivity relations have been studied extensively for agricultural crops (e.g. Van Keulen and Wolf, 1986) and to a lesser extent for production forests, but are largely unknown for many natural vegetation types. Good progress is being made using computer-modelling experiments (Reichstein et al., 2003; Hoff et al., 2002; Landsberg

and Waring, 1997; Running and Coughlan, 1988), but besides flux-tower measurements and small-scale laboratory tests, little validation data is available (Pereira et al., 2007; Chiesie et al., 2005; Hanson et al., 2004; Baldochi, 2003).

Relating stem growth to seasonal and annual records of rainfall and temperatures using absolutely dated annual tree-ring width may result in new information about the effects of climate change on tree growth in the Mediterranean region. Stem-growth increments as recorded in annual tree rings are an accurate record of past stem growth and more generally of past forest productivity. Productivity and stem growth are influenced by both regional and local processes. Local factors like soil depth, nutrient and mineral availability, slope exposition, and competition between individuals causes stem growth to show significant local variations. This study however focuses on the impact of the overall regional variation of precipitation and temperature on stem growth.

Tree rings are also used as a climate proxy for reconstructing past climates beyond the available instrumental records (dendroclimatology) (Briffa, 2000; Jones et al., 1998; Frits, 1976). Dendroclimatic reconstructions in general focus on high latitude or high altitude sites where temperature is the main growth-limiting factor and as a result are mainly representative for temperature (Martinelli, 2004; Grudd et al., 2002; Briffa et al., 2004; Büntgen et al., 2005, 2010). Mediterranean climates are characterised by a significantly uneven distribution of rainfall over the year with concentrations of precipitation in autumn and spring, and by a regular occurrence of severe moisture deficits in the summer months (Fig. 1). These climatic characteristics cause tree growth to be mainly limited by water availability. Therefore annual tree growth in this region most likely reflects water availability or drought rather than temperature.

The comparison of Mediterranean tree-ring chronologies of needle-leaf and deciduous species to climate data shows a positive growth response to winter and spring precipitation, and a negative response to summer temperature (Martin-Benito et al., 2008; Campelo Nabais et al., 2007; Tessier et al., 1994). Longer chronologies of needle-leaf trees have been successfully used to reconstruct precipitation and drought fluctuations in the Mediterranean Basin and Canadian Prairies for time intervals of 500

**BGD**

8, 355–383, 2011

## Relating ring width of Mediterranean evergreen species

W. Nijland et al.

Title Page

Abstract

Introduction

Conclusions

References

Tables

Figures

◀

▶

◀

▶

Back

Close

Full Screen / Esc

Printer-friendly Version

Interactive Discussion



years and longer (Nicault et al., 2008; Touchan et al., 2005; Case et al., 1995). Evergreen trees do not always show a clear winter stop in their growth because they have leaves all year around. In addition their growth may halt during summer because of water shortage. These phenomena cause a lack of well-defined annual rings in their wood. Mediterranean species are therefore difficult to date accurately, and few dendrochronological studies are available from Mediterranean ecosystems. Cherubini et al. (2003), however, point out that if sufficient care is taken with the selection, sampling and counting, it is possible to use these species for tree-ring analysis. Cherubini et al. further claim that such analyses would provide valuable insights in tree-growth processes and sensitivity of evergreen Mediterranean species to anticipated climate change.

Recent studies on holm oak (*Quercus ilex*) tree-ring chronologies from Portugal and Spain illustrate the possibility of using this evergreen species for dendroclimatic analyses and show good correspondence between tree growth and precipitation (Campelo et al., 2009) as well as temperature (Paton et al., 2009) in and before the growing season. Holm oak often shows a double growing season around a period of drought-induced rest (Paton et al., 2009; Campelo et al., 2007). Their conclusion are that spring is the most important growing season and that high precipitation in late summer or early autumn triggers the formation of wide double rings.

As part of a larger study of the effects of climatic change on ecosystem productivity in the Mediterranean we were keen to know which meteorological variables steer biomass production most. The common approach in this case is to apply computer models, which can also be used to evaluate the effects of different climate-change scenarios. However, validation of model performance is limited by data availability from small-scale experiments or indirect data from satellite imagery. In this context tree-ring analysis may provide additional information on past forest productivity and its sensitivity to climate variability. The advantage of ring-width data is that they are available over extended periods of time and are archived in existing forests. Our study area contains different geological substrates which have different water-holding capacities (Nijland

**Relating ring width of  
Mediterranean  
evergreen species**

W. Nijland et al.

Title Page

Abstract

Introduction

Conclusions

References

Tables

Figures

◀

▶

◀

▶

Back

Close

Full Screen / Esc

Printer-friendly Version

Interactive Discussion



et al., 2010) and we would like to know if biomass production on different substrates responds differently to climatic variables. The two dominant tree species in the area are strawberry tree (*Arbutus unedo*) and holm oak (*Quercus ilex*) and we would also like to know if they show the same growth response to climatic variations.

The research questions of this study therefore are:

1. Which meteorological variables have the strongest effect on forest productivity of the evergreen Mediterranean species *Quercus ilex* and *Arbutus unedo* as expressed in annual stem-growth increments?
2. Is there a difference in the climate sensitivity of *A. unedo* and *Q. ilex* co-existing in the same area?
3. Is there a difference in the climate sensitivity of these species growing on different geological substrates?

## 2 Methods

### 2.1 Study area

The study area is situated in the catchment basin of the Peyne River, a tributary to the Herault in Southern France. The region has a Mediterranean sub-humid climate with dry summers and maximum precipitation in autumn (Fig. 1). The annual precipitation sum is very variable, ranging from 400 to 1200 mm with a long-term average just below 800 mm. The mean annual temperature is around 14°C with monthly average summer temperatures between 20 and 27°C and monthly average winter temperatures between 2 and 10°C. The vegetation on the natural sites of the study area is sclerophyll and consists mostly of evergreen shrubs and trees, heath species, odorous herbs and grasses. Dominant species in the area are *Quercus ilex* (holm oak), *Arbutus unedo* (strawberry tree), *Quercus pubescens* (downy oak) and *Erica arborea*

**BGD**

8, 355–383, 2011

## Relating ring width of Mediterranean evergreen species

W. Nijland et al.

Title Page

Abstract

Introduction

Conclusions

References

Tables

Figures

◀

▶

◀

▶

Back

Close

Full Screen / Esc

Printer-friendly Version

Interactive Discussion



(tree heath). Mixed deciduous-evergreen oak forests with dense undergrowth are considered the climax vegetation in the area (Tomaselli, 1981), but on the marginal soils this vegetation type usually does not develop. Depending on substrate and history, all types ranging from open scrublands to low dense forests with sparse understory occur (Sluiter and De Jong, 2007; Debussche et al., 1996). The catchment basin is situated at the edge of the “Montagne Noir” and is characterized by a high spatial variation of geological substrates. These substrates vary with respect to soil type, soil depth and moisture storage capacity, which also might influence the vegetation productivity. Trees were sampled on three types of substrate: dolomite, calcareous sandstone, and flysch (Alabouvette, 1982). Soils are shallow and poorly developed and classify as regosols or lithosols according to the FAO soil classification system (Driessen et al., 2001).

## 2.2 Trees

The two dominant tree species of the Payne area are considered in this study: *Q. ilex* and *A. unedo*. Both species are evergreen and tree heights in our study area range between 3 and 12 m.

*Quercus ilex* (FR: *chêne vert*) is a sclerophyllous oak species abundant in large parts of the Mediterranean Basin. The leaves are persistent, leather like and variable in form and size. They are mostly elliptical (dimensions: 2 to 7 cm long and 1 to 3 cm wide) and sometimes have a spiny edge. Flowering is in spring and the acorns ripen in one year (Blamey and Gray-Wilson, 2004). *Q. ilex* wood is semi-ring-porous with larger vessels formed in spring and generally smaller vessels spread throughout the summer wood. The wood has pronounced radial rays (Schweingruber, 2003).

*Arbutus unedo* (FR: *arbousier*) is a tree-like shrub of the heather family growing up to 10 m tall. Leafs are dark green and glossy (dimensions: 5 to 10 cm long and 2 to 3 cm wide), with a serrated margin. It flowers in autumn with panicles of bell shaped flowers and has a red rough-surfaced berry (diameter: 1 to 2 cm) which ripens during the next summer season (Blamey and Gray-Wilson, 2004). The wood of *A. unedo* is diffuse-porous with most of the vessels formed in spring with often a denser ring of

**BGD**

8, 355–383, 2011

## Relating ring width of Mediterranean evergreen species

W. Nijland et al.

Title Page

Abstract

Introduction

Conclusions

References

Tables

Figures

◀

▶

◀

▶

Back

Close

Full Screen / Esc

Printer-friendly Version

Interactive Discussion



vessels formed at the onset of the growing season.

Most forests in the Payne area have been managed in the past as coppices for charcoal production (Mather et al., 1999). When the forests were cleared, the root systems remained intact and the forests recovered quickly through resprouting. This is still recognizable in the current forest morphology, many smaller stems being grouped in stools that share a common root system.

### 2.3 Data collection

To obtain ring-width samples, live tree stems were felled and disks were cut from a straight section of the stems at 50 to 100 cm from ground level. A first test series of disks was collected in September 2007. During this field campaign we also sampled a number of trees using an increment corer. After preparation of the cores it proved impossible to obtain accurate ring counts based on the narrow cores, for three reasons: 1) both species show only weak seasonality, 2) some annual rings are locally missing, and 3) *Q. ilex* has pronounced rays which interfere with the rings in sections of little annual growth. For these reasons the core samples were omitted from this study and we focussed on the disks. To increase the number of samples we collected a second series of tree disks in June 2009. In total 34 trees were sampled: 19 *Q. ilex* and 15 *A. unedo*. All disks were prepared by first sanding them and then polishing them using silicon carbide abrasive. The prepared disks were digitized on a 2400 dpi flatbed scanner and their images were enhanced for increased contrast and sharpness. The rings were counted along two radial sections following the growth direction of wood. The location of the sections was chosen visually in order to avoid sections with strongly compressed rings and reaction wood as much as possible. The rings were measured manually on screen using CooRecorder (Larsson, 2007) and while doing this we verified our observations by looking at the original wood through a stereomicroscope with magnification of 8× to 32×. The on-screen method allowed for accuracy assessment and correction of false and missing rings. Crossdating of all radii was carried out visually with the PAST4 software (Knibbe, 2009) using specific pointer years.

## Relating ring width of Mediterranean evergreen species

W. Nijland et al.

Title Page

Abstract

Introduction

Conclusions

References

Tables

Figures



Back

Close

Full Screen / Esc

Printer-friendly Version

Interactive Discussion





## 2.4 Meteorological data

Monthly rainfall sums and temperature averages, were obtained from the Meteo France observation station in Gignac (43°39'48" N; 3°33'48" E, altitude 58 m), which is about 30 km from the study site and at a similar distance to the Mediterranean Sea. Data is available from 1970 to 2008 (38 years). Figure 1 shows the monthly averages over the whole period of observation.

## 2.5 Chronologies

The common signal of the individual measurement series was checked using Cofecha (Holmes, 1983; Grissino-Mayer, 2001). The series were averaged into three chronology types: (a) one single chronology representing all series regardless of tree species and substrate; (b) two species-specific chronologies; and (c) three substrate-related chronologies. For each of the chronologies we only used samples with a high common signal as expressed by the series intercorrelation calculated with Cofecha. Samples with a low common signal caused by reaction wood, local processes or suspected misdating were excluded from the chronologies in order to strengthen the common regional signal in the data. Before combining the measurements in the chronologies, the individual ring width series were normalised and detrended using a smoothing-spline function with 50% frequency response for a period of 32 years (Bunn, 2008). The normalised series are expressed as ring width index (rwi), which is the actual ring width divided by the expected (trend) ring width. The average rwi equals 1 by definition. The chronologies were compared to monthly precipitation sums and average monthly temperatures, using cross-correlation coefficients (Pearson's R). In addition we used Precon (Frits, 1991) to create bootstrapped response functions (Guiot, 1991). Bootstrapped response functions are a statistically more robust way to compare dendrochronological and meteorological time series and in addition they allow for significance testing.

**BGD**

8, 355–383, 2011

### Relating ring width of Mediterranean evergreen species

W. Nijland et al.

Title Page

Abstract

Introduction

Conclusions

References

Tables

Figures

◀

▶

◀

▶

Back

Close

Full Screen / Esc

Printer-friendly Version

Interactive Discussion



### 3 Results

Cross-sections were taken from 34 trees in total (19 *Q. ilex* and 15 *A. unedo*). Stem diameters were between 8 and 16 cm, which is representative for the tree population in the area.

Annual ring boundaries were difficult to discern in the samples of both species (clear colour signature was absent) with average ring widths below 1 mm, and false rings were often present due to summer dormancy. However, we managed to obtain reliable ring-width measurements and dates for most tree sections, by closely examining the cell structure and colour of the wood.

*Q. ilex* in a productive growth phase shows wide rings, with the vessel and cell sizes steadily decreasing within the year (Fig. 2a). In less-productive years its rings are narrow and contain few vessels that decrease in size in a more irregular manner. The annual boundaries of narrow rings are characterized by a jump in vessel size that occurs over a wider section of the wood and usually coincides with a transition from a darker to a lighter wood colour (Fig. 2b).

*A. unedo* has fine rays in the wood and is diffuse porous, but pore density is mostly highest in the earliest-formed part of the ring (Fig. 2c). False rings frequently occurred within the annual rings and are most probably caused by different growing phases and dormancy within the growing season. These “rings” can be differentiated from true annual rings because they have vague boundaries rather than the sharp delineation characteristic for winter dormancy (Fig. 2d).

The trees in the study area mostly grow from stools and therefore have skewed or crooked growth forms. As a result the samples contain abundant reaction wood, which to some extent is also reflected by the ring measurements. The resprouting can also be recognised in the wood section, as anomalously large first rings (Fig. 3). The root mass is large compared to the shoot and leaf biomass in this first growth phase, and competition for light and water is greatly reduced. Around five years after the logging the canopy closes, resulting in a decrease and stabilisation of ring widths.

## Relating ring width of Mediterranean evergreen species

W. Nijland et al.

Title Page

Abstract

Introduction

Conclusions

References

Tables

Figures

◀

▶

◀

▶

Back

Close

Full Screen / Esc

Printer-friendly Version

Interactive Discussion



The longest ring record is 78 years long and the average age for all sampled trees is 55 years. For the analysis we restricted the time series to the maximum length of available meteorological data, i.e. 1970 to 2008, which gives a total of 38 years. By analysing the data for 38 years while average tree age dates back to 55 years we excluded the anomalously large rings formed in the first growth years as a result of re-sprouting. For further analysis, ring width chronologies were created from the total pool of ring samples (34 trees\*2 samples), and for subsets based on the two tree species and the three different substrates. The species specific chronologies each include all substrates, and the substrate specific chronologies equally represent both species growing on that substrate. Table 1 lists the different chronologies and their descriptive statistics. The correlation and sensitivity of the *A. unedo* chronology are higher than those of *Q. ilex*, indicating a stronger common forcing on *A. unedo*. The substrate specific chronologies show a less clear signal with the highest correlation for dolomite and the highest sensitivity for flysch. The number of samples included in the substrate chronologies is limited, but correlations and sensitivity of the series are adequate (above the critical level of 0.32 for  $p=0.05$  and  $n=38$ ) for further analysis (Table 1).

The normalised ring-width chronologies show very similar patterns throughout the analyzed range, indicating a strong common forcing and accurate relative dating (Fig. 4). Positive pointer years are visible in 1977, 1992, and 1997 and negative pointer years are 1995, 2003 and 2006.

### Climate response

Next we analyzed the relationship between ring width and weather conditions. The correlation coefficients and response functions between the annual ring widths and monthly average temperatures and precipitation sums over the period from 1970 to 2008 (38 years) show a consistent and significant climatic forcing on tree growth (Fig. 5).

---

**Relating ring width of  
Mediterranean  
evergreen species**W. Nijland et al.

---

[Title Page](#)[Abstract](#)[Introduction](#)[Conclusions](#)[References](#)[Tables](#)[Figures](#)[Back](#)[Close](#)[Full Screen / Esc](#)[Printer-friendly Version](#)[Interactive Discussion](#)

The temperature graph shows two main features: a positive temperature/growth relationship in January to April, and a negative one in June and July (Fig. 5a). This means that tree growth benefits from high temperatures early in the season and that growth is reduced if summer temperatures are high. The precipitation graph shows a strong positive tree-growth response in May and June, indicating a high dependence of the trees on rainfall in these months (Fig. 5b). May and June are the most productive months of the growing season in the area and the clear correlation with precipitation in these months shows that productivity is strongly drought limited. A second feature in the precipitation graph is a small negative growth response in September and October. The negative response is likely to be caused by the correlation between warm summers and high precipitation in these months and shows that the trees in this area do not benefit from the large amounts of precipitation falling in September and October. The growth potential in autumn is low because of the declining temperatures and day length.

Both graphs show no significant growth response to weather conditions in August, while this month is in the middle of summer season. A possible explanation of this phenomenon is that even in wetter or cooler years both trees species grow very little growth in August because growth is still limited by drought and/or heat.

The last bar in each graph shows the relationship between ring width and yearly averaged temperature and precipitation. The correlation with the yearly variables is low and insignificant, showing that analysis of yearly averages does not reveal the actual sensitivity of the trees to climate variability. Both graphs also show little correlation with conditions in the preceding year (August to December), indicating that there is no memory effect in this ecosystem.

Comparison of the climate response functions of *Q. ilex* and *A. unedo* (Fig. 6) shows a slight temporal difference between their growth responses, with *A. unedo* having its strongest response a bit earlier in the season than *Q. ilex*. Apart from this their response is very similar, which is to be expected because they belong to the same plant-functional type of evergreen broadleaf trees/shrubs. *Q. ilex* and *A. unedo* can also be

found in mixed stands throughout our study area and other parts of the Mediterranean Basin.

The differences of the response functions for the three substrate-based chronologies are small (Fig. 7). Conclusive interpretations based on these response functions are necessarily limited due to the low number of samples in each class. The most notable difference occurs between the calcareous sandstone chronology and those of both other substrates, the sandstone chronology showing lower sensitivity to summer temperatures and a high response to August precipitation whereas both other substrate chronologies show no response to precipitation in August.

To examine the processes underlying the yearly wood production in more detail we compared our data to Gross-Primary-Productivity (GPP) data derived from flux tower measurements from 2000 to 2008. The CarboEuropeIP site Puechabon (FRpue) is situated at approximately 35 km from our research area in an evergreen forest dominated by *Q. ilex*. A detailed analysis of the flux data is published in Allard et al. (2008) and the data is publicly available (Rambal et al., 2008). We specifically looked at 2004 and 2006 as examples of a typical high productive (2004) and low productive (2006) year (Fig. 8). The difference between these two years shows a high correspondence with climate response we found in the tree-ring analysis and therefore provides confirmation of the climate/growth responses we inferred for Peyne.

Two important differences are visible in the GPP curves of 2004 and 2006. The most striking difference is the large dip in productivity in May to August of 2006 where only a narrow dip is present in July and August of 2004. The second difference is a generally higher productivity during the first half of 2004 than during the first half of 2006. The large reduction in 2006 summer productivity is caused by low spring and summer rainfall in combination with high summer temperatures. In 2004 the productivity is also reduced during the warmest part of the summer, but the decline starts much later because of higher spring precipitation. The high productivity in the first half of 2004 is caused by higher early spring temperatures resulting in an early start of the growing season.

---

**Relating ring width of  
Mediterranean  
evergreen species**

W. Nijland et al.

---

Title Page

Abstract

Introduction

Conclusions

References

Tables

Figures



Back

Close

Full Screen / Esc

Printer-friendly Version

Interactive Discussion



## 4 Discussion and conclusions

In this study we present the combined analysis of tree-ring chronologies of two Mediterranean evergreen tree species and 38 years of monthly temperature and precipitation data from the same area. Despite the difficulties in measuring and dating the annual rings we found consistent ring-width patterns and a strong response of tree growth to climate variability. The analyses prove a significant statistical relation between annual stem increments and monthly meteorological variables and the patterns we found provide valuable insights regarding the mechanisms behind tree growth and the sensitivity of the ecosystem to climate variability. The inferred physiological processes are confirmed by a more detailed temporal look at the ecosystem based on flux-tower measurements.

In our study area, tree growth is purely dependent on the conditions during the growing season, most importantly rainfall in May and June. This is in contrast to the results of four independent studies of *Q. ilex* ring chronologies established in Portugal and Spain. These studies show a stronger sensitivity to winter and early-spring precipitation, most likely because of greater water retention in the soil (Campelo et al., 2009; Paton et al., 2009; Gea-Izquierdo et al., 2009; Nabais et al., 1999). A study on young *Q. ilex* trees grown from acorns in Montpellier (60 km from our site) shows a response that is similar to the Payne response, with high climate sensitivity during the current growing season and no response to the conditions during the preceding year (Zhang and Romane, 1991). The difference we found between the calcareous sandstone and both other substrate chronologies indicates that the vegetation on the former substrate maintains a better growth potential throughout the dry season. Trees on calcareous sandstone show a stronger positive response to August rainfall, which fits with the higher clay content and the deep water retention that is found on this substrate (Nijland et al., 2010).

Modern climate change is expected to intensify the typical characteristics of the Mediterranean climate. Temperatures will increase throughout the year, and rainfall

**BGD**

8, 355–383, 2011

### Relating ring width of Mediterranean evergreen species

W. Nijland et al.

Title Page

Abstract

Introduction

Conclusions

References

Tables

Figures

◀

▶

◀

▶

Back

Close

Full Screen / Esc

Printer-friendly Version

Interactive Discussion



will concentrate more in autumn and winter, leaving a more persistent dry period in summer (Hertig, 2008; Gao and Girogi, 2008; Geblin, 2003). Our results show that especially an intensification of summer drought may have serious deteriorating effects on tree growth.

5 The results of a combined analysis of monthly meteorological records and annual tree-ring widths can provide valuable insights in ecosystem functioning and its sensitivity to climate variability and possible climate change. As ring widths from the past are archived in living trees and are readily available for at least the past five decades in most standing forests, they are an important information source for the prediction and  
10 modelling of vegetation development. This source at present is underused.

Accurate parameterisation of productivity models is complicated by the scarcity of field data, for example from detailed gas exchange or sap-flow measurements. In absence of other data, ring widths may be used to determine the relative importance of different limiting factors (e.g. water, temperature) on productivity throughout the year.  
15 Integration of model results and ring measurements may aim at reproduction of ring width chronologies using forest simulation models, but can also aim at matching the seasonal sensitivity of the models to climatic variability to the response function derived from the analysis of tree ring and meteorological data. By calibrating the models using the seasonal patterns of limiting factors in addition to the total annual productivity or resulting leaf area, the model results are greatly improved especially towards the  
20 assessment of climate-change vulnerability. The Mediterranean climate is very variable and predicted changes are smaller than the current year to year variability. The growth-climate relations we found therefore remain valid in a future changed climate. Although detailed plant-physiological studies remain very important for the understanding of plant growth and ecosystem functioning, tree-ring analysis seems to be a very  
25 promising tool for expanding both the temporal scale as well as the geographical coverage of field-validation data.

In this study we focussed on ring width data only, but other studies in Mediterranean areas suggest that more detailed measurements of wood anatomy (Campelo et al.,

**BGD**

8, 355–383, 2011

---

## Relating ring width of Mediterranean evergreen species

W. Nijland et al.

---

Title Page

Abstract

Introduction

Conclusions

References

Tables

Figures

◀

▶

◀

▶

Back

Close

Full Screen / Esc

Printer-friendly Version

Interactive Discussion





2010) or including double ring data (Campelo et al., 2007; Zhang and Romane, 1991) may also provide information on the sensitivity of trees to climate.

In conclusion, we found that the evergreens *Q. ilex* and *A. unedo* in the Peyne area in Southern France are very sensitive to precipitation in the months from April to July and are also sensitive to spring and summer temperatures. The trees hardly benefit from the precipitation surplus in autumn and winter. Both species effectively show a very similar pattern in their climate response. There are little differences between the substrate-related responses, with the examined substrates all being shallow but characterized by different water-retention capacities. Trees growing on the calcareous sandstone are more sensitive to august rainfall than on the other substrates which indicating a larger growth potential during the driest and warmest part of the summer.

Tree-ring analysis of Mediterranean evergreen species is not easy because of frequent false rings and unclear ring boundaries, but accurate measurement and dating is possible if enough care is taken during the preparation and measurement of the samples. Combining ring-width chronologies with meteorological records provides useful information on vegetation functioning and climate sensitivity. Tree stems contain much information that is of great interest to productivity modelling and climate-impact predictions. This information is archived and readily available in every forest.

*Acknowledgement.* The authors thank Rogier de Jong, Wilco Klutman and “Boomwerk Bilthoven” for their cooperation in felling and sampling the tree stems and Emma Daniëls is kindly acknowledged for her help in the ring width measurements.

## References

- Alabouvette, B.: Carte Geologique de la France a 1/50 000: feuille de Lodeve, BRGM Ed., Orleans, France, 1982.
- Allard, V., Ourcival, J. M., Rambal, S., Joffre, R., and Rocheteau, A.: Seasonal and annual variation of carbon exchange in an evergreen Mediterranean forest in Southern France, *Glob. Change Biol.*, 14, 4, 714–725, 2008.

**BGD**

8, 355–383, 2011

## Relating ring width of Mediterranean evergreen species

W. Nijland et al.

Title Page

Abstract

Introduction

Conclusions

References

Tables

Figures

◀

▶

◀

▶

Back

Close

Full Screen / Esc

Printer-friendly Version

Interactive Discussion





---

**Relating ring width of  
Mediterranean  
evergreen species**W. Nijland et al.

---

[Title Page](#)[Abstract](#)[Introduction](#)[Conclusions](#)[References](#)[Tables](#)[Figures](#)[◀](#)[▶](#)[◀](#)[▶](#)[Back](#)[Close](#)[Full Screen / Esc](#)[Printer-friendly Version](#)[Interactive Discussion](#)

Baldocchi, D. D. and Xu, L.: What limits evaporation from Mediterranean oak woodlands – the supply of moisture in the soil, physiological control by plants or the demand by the atmosphere?, *Adv. Water Resour.*, 30(10), 2113–2122, 2007.

Blamey, M. and Grey-Wilson, C.: *Wild Flowers of the Mediterranean: A Complete Guide to the Islands and Coastal Regions*, 2nd edn., A&C Black Publishers Ltd., London, 2004.

Briffa, K. R.: Annual climate variability in the Holocene: interpreting the message of ancient trees, *Quaternary Sci. Rev.*, 19(1), 87–105, 2000.

Briffa, K. R., Osborn, T. J., and Schweingruber, F. H.: Large-scale temperature inferences from tree rings: a review, *Global Planet. Change*, 40(1), 11–26, 2004.

Bunn, A. G.: A dendrochronology program library in R (dplR), *Dendrochronologia*, 26, 115–124, 2008.

Büntgen, U., Esper, J., Frank, D. C., Nicolussi, K., and Schmidhalter, M.: A 1052-year tree-ring proxy for Alpine summer temperatures, *Clim. Dynam.*, 25(2), 141–153, 2005.

Büntgen, U., Frank, D., Trouet, V., and Esper, J.: Diverse climate sensitivity of Mediterranean tree-ring width and density, *Trees-Struct. Funct.*, 24(2), 261–273, 2010.

Campelo, F., Gutiérrez, E., Ribas, M., Nabais, C., and Freitas, H.: Relationships between climate and double rings in *Quercus ilex* from Northeast Spain, *Can. J. Forest Res.*, 37(10), 1915–1923, 2007.

Campelo, F., Nabais, C., Garcia-Gonzalez, I., Cherubini, P., Gutiérrez, E., and Freitas, H.: Dendrochronology of *Quercus ilex* L. and its potential use for climate reconstruction in the Mediterranean region, *Can. J. Forest Res.*, 39(12), 2486–2493, 2009.

Campelo, F., Nabais, C., Gutiérrez, E., Freitas, H., and García-González, I.: Vessel features of *Quercus ilex* L. growing under Mediterranean climate have a better climatic signal than tree-ring width, *Trees-Struct. Funct.*, 24(3), 463–470, 2010.

Case, R. A. and MacDonald, G. M.: A dendroclimatic reconstruction of annual precipitation on the Western Canadian Prairies since AD 1505 from *Pinus flexilis* James, *Quaternary Res.*, 44(2), 267–275, 1995.

Cherubini, P., Gartner, B. L., Tognetti, R., Braeker, U. O., Schoch, W., and Innes, J. L.: Identification, measurement and interpretation of tree rings in woody species from mediterranean climates, *Biol. Rev.*, 78(1), 119–148, 2003.

Chiesi, M., Maselli, F., Bindi, M., Fibbi, L., Cherubini, P., Arlotta, E., Tirone, G., Matteucci, G., and Seufert, G.: Modelling carbon budget of Mediterranean forests using ground and remote sensing measurements, *Agr. Forest Meteorol.*, 135(1), 22–34, 2005.

- Debusche, M., Escarre, J., Lepart, J., Houssard, C., and Lavorel, S.: Changes in Mediterranean plant succession: old-fields revisited, *J. Veget. Sci.*, 7(4), 519–526, 1996.
- Fritts, H. C.: *Tree Rings and Climate*, Academic Press, London, 1976.
- Fritts, H. C.: *Reconstructing Large-Scale Climatic Patterns from Tree-Ring Data*, University of Arizona Press, Tucson, 1991.
- Gao, X. and Giorgi, F.: Increased aridity in the Mediterranean region under greenhouse gas forcing estimated from high resolution simulations with a regional climate model, *Global Planet. Change*, 62(3), 195–209, doi:10.1016/j.gloplacha.2008.02.002, 2008.
- Gea-Izquierdo, G., Martín-Benito, D., Cherubini, P., and Isabel, C.: Climate-growth variability in *Quercus ilex* L. West Iberian open woodlands of different stand density, *Ann. Forest Sci.*, 66(8), 802, doi:10.1051/forest/2009080, 2009.
- Gibelin, A. L. and Déqué, M.: Anthropogenic climate change over the Mediterranean region simulated by a global variable resolution model, *Clim. Dynam.*, 20(4), 327–339, 2003.
- Grenon, M. and Batisse, M.: *Le Plan Bleu: Avenirs du Bassin Méditerranéen*, Economica, Paris, 1989.
- Grissino-Mayer, H. D.: Research report evaluating crossdating accuracy: a manual and tutorial for the computer program COFECHA, *Tree-Ring Res.*, 57(2), 205–221, 2002.
- Grudd, H., Briffa, K. R., Karlen, W., Bartholin, T. S., Jones, P. D., and Kromer, B.: A 7400-year tree-ring chronology in Northern Swedish Lapland: natural climatic variability expressed on annual to millennial timescales, *Holocene*, 12(6), 657–665, 2002.
- Guiot, J.: The bootstrapped response function, *Tree-Ring*, 51, 39–41, 1991.
- Hanson, P. J., Amthor, J. S., Wullschlegel, S. D., Wilson, K. B., Grant, R. F., Hartley, A., Hui, D., Hunt, E. R., Johnson, D. W., Kamball, J. S., King, A. W., Luo, Y., McNulty, S. G., Sun, G., Thornton, P. E., Wang, S., Williams, M., Baldocchi, D. D., and Cushman, R. M.: Oak forest carbon and water simulations: model intercomparisons and evaluations against independent data, *Ecol. Monogr.*, 74(3), 443–489, 2004.
- Hertig, E. and Jacobeit, J.: Downscaling future climate change: temperature scenarios for the Mediterranean area, *Global Planet. Change*, 63(2), 127–131, 2008.
- Hoff, C., Rambal, S., and Joffre, R.: Simulating carbon and water flows and growth in a Mediterranean evergreen *Quercus ilex* coppice using the FOREST-BGC model, *Forest Ecol. Manage.*, 164, 121–136, 2002.
- Holmes, R. L.: Computer-assisted quality control in tree-ring dating and measurement, *Tree-Ring Bull.*, 43(1), 69–78, 1983.

**BGD**

8, 355–383, 2011

---

## Relating ring width of Mediterranean evergreen species

W. Nijland et al.

---

Title Page

Abstract

Introduction

Conclusions

References

Tables

Figures

◀

▶

◀

▶

Back

Close

Full Screen / Esc

Printer-friendly Version

Interactive Discussion



## Relating ring width of Mediterranean evergreen species

W. Nijland et al.

Title Page

Abstract

Introduction

Conclusions

References

Tables

Figures

◀

▶

◀

▶

Back

Close

Full Screen / Esc

Printer-friendly Version

Interactive Discussion



Jones, P. D., Briffa, K. R., Barnett, T. P., and Tett, S. F. B.: High-resolution palaeoclimatic records for the last millennium: Interpretation, integration and comparison with general circulation model control-run temperatures, *Holocene*, 8(4), 455–471, 1998.

Knibbe, B.: PAST4. SCIEM scientific engineering and manufacturing, available at: <http://www.sciem.com>, last acces: 9 February 2010.

Landsberg, J. J. and Waring, R. H.: A generalised model of forest productivity using simplified concepts of radiation-use efficiency, carbon balance and partitioning, *Forest Ecol. Manage.*, 95(3), 209–228, 1997.

Larsson, L.: CooRecoreder User Manual, Cybis Elektronik and Data AB, available at: [www.cybis.se/forfun/dendro/](http://www.cybis.se/forfun/dendro/), last acces: 10 February 2010.

Martín-Benito, D., Cherubini, P., del Río, M., and Cañellas, I.: Growth response to climate and drought in *Pinus nigra Arn.* trees of different crown classes, *Trees-Struct. Funct.*, 22(3), 363–373, 2008.

Martinelli, N.: Climate from dendrochronology: latest developments and results, *Global Planet. Change*, 40(1), 129–139, 2004.

Mather, A. S., Fairbairn, J., and Needle, C. L.: The course and drivers of the forest transition: the case of France, *J. Rural Stud.*, 15(1), 65–90, doi:10.1016/S0743-0167(98)00023-0, 1999.

Nabais, C., Freitas, H., and Hagemeyer, J.: Tree-rings to climate relationships of *Quercus ilex* L. in the NE-Portugal, *Dendrochronologia*, 16(17), 37–44, 1998.

Naveh, Z. and Kutiel, P.: Changes in vegetation of the Mediterranean Basin in response to human habitation, in: *The earth in transition, patterns and processes of biotic impoverishment*, edited by: Woodwell, G. M., Cambridge University Press, Cambridge, 259–300, 1990.

Nicault, A., Alleaume, S., Brewer, S., Carrer, M., Nola, P., and Guiot, J.: Mediterranean drought fluctuation during the last 500 years based on tree-ring data, *Clim. Dynam.*, 31(2), 227–245, 2008.

Nijland, W., van der Meijde, M., Addink, E. A., and de Jong, S. M.: Detection of soil moisture and vegetation water abstraction in a Mediterranean natural area using electrical resistivity tomography, *Catena*, 81, 209–216, 2010.

Patón, D., García-Herrera, R., Cuenca, J., Galavis, M., and Roig, F. A.: Influence of climate on radial growth of holm oaks (*Quercus ilex* subsp. *Ballota desf*) from SW Spain, *Geochronometria*, 34(1), 49–56, 2009.

Pereira, J. S., Mateus, J. A., Aires, L. M., Pita, G., Pio, C., David, J. S., Andrade, V., Banza, J., David, T. S., Paço, T. A., and Rodrigues, A.: Net ecosystem carbon exchange in three

## Relating ring width of Mediterranean evergreen species

W. Nijland et al.

Title Page

Abstract

Introduction

Conclusions

References

Tables

Figures

◀

▶

◀

▶

Back

Close

Full Screen / Esc

Printer-friendly Version

Interactive Discussion



contrasting Mediterranean ecosystems – the effect of drought, *Biogeosciences*, 4, 791–802, doi:10.5194/bg-4-791-2007, 2007.

Rambal, S., Ourcival, J. M., and Mission, L.: Level 4 dataset CEIP\_EC\_L4\_FRPue in CarboeuropelP Ecosystem Component Database, available at: <http://gaia.agraria.unitus.it/database>, last acces: 2 August 2010.

Reichstein, M., Tenhunen, J., Rouspard, O., Ourcival, J. M., Rambal, S., Miglietta, F., Peressotti, A., Pecchiari, M., Tirone, G., and Valentini, R.: Inverse modeling of seasonal drought effects on canopy CO<sub>2</sub>/H<sub>2</sub>O exchange in three Mediterranean ecosystems, *J. Geophys. Res.*, 108(D23), 4726, doi:10.1029/2003JD003430, 2003.

Running, S. W. and Coughlan, J. C.: A general model of forest ecosystem processes for regional applications. I. Hydrologic balance, canopy gas exchange and primary production processes, *Ecol. Model.*, 42(2), 125–154, 1988.

Sluiter, R. and De Jong, S. M.: Spatial patterns of Mediterranean land abandonment and related land cover transitions, *Landscape Ecol.*, 22(4), 559–576, 2007.

Schweingruber, F. H.: *Trees and Wood in Dendrochronology: Morphological, Anatomical, and Tree-Ring Analytical Characteristics of Trees Frequently used in Dendrochronology*, Springer-Verlag, Berlin, 1993.

Tessier, L., Nola, P., and Serre-Bachet, F.: Deciduous *Quercus* in the Mediterranean region: tree-ring/climate relationships, *New Phytol.*, 126(2), 355–367, 1994.

Tomaselli, R.: Relations with other ecosystems: temperate evergreen forests, Mediterranean coniferous forests, savannahs, steppes and desert shrublands, *Ecosys. World*, 11, Mediterranean-type shrublands, 123–130, 1981.

Touchan, R., Xoplaki, E., Funkhouser, G., Luterbacher, J., Hughes, M., Erkan, N., Akkemik, Ü., and Stephan, J.: Reconstructions of spring/summer precipitation for the Eastern Mediterranean from tree-ring widths and its connection to large-scale atmospheric circulation, *Clim. Dynam.*, 25(1), 75–98, doi:10.1007/s00382-005-0016-5, 2005.

UNEP: Plan Bleu: State of the Environment and Development in the Mediterranean, UNEP/MAP-Plan Bleu, Athens, 2009.

Van Keulen, H. and Wolf, J.: *Modelling of Agricultural Production: Weather, Soils and Crops*, Pudoc, Wageningen, 1986.

Zhang, S. H. and Romane, F.: Variations de la croissance radiale de *Quercus ilex* L. en fonction du climat, *Ann. Sci. Forest.*, 48, 225–234, 1991.

## Relating ring width of Mediterranean evergreen species

W. Nijland et al.

Title Page

Abstract

Introduction

Conclusions

References

Tables

Figures

◀

▶

◀

▶

Back

Close

Full Screen / Esc

Printer-friendly Version

Interactive Discussion

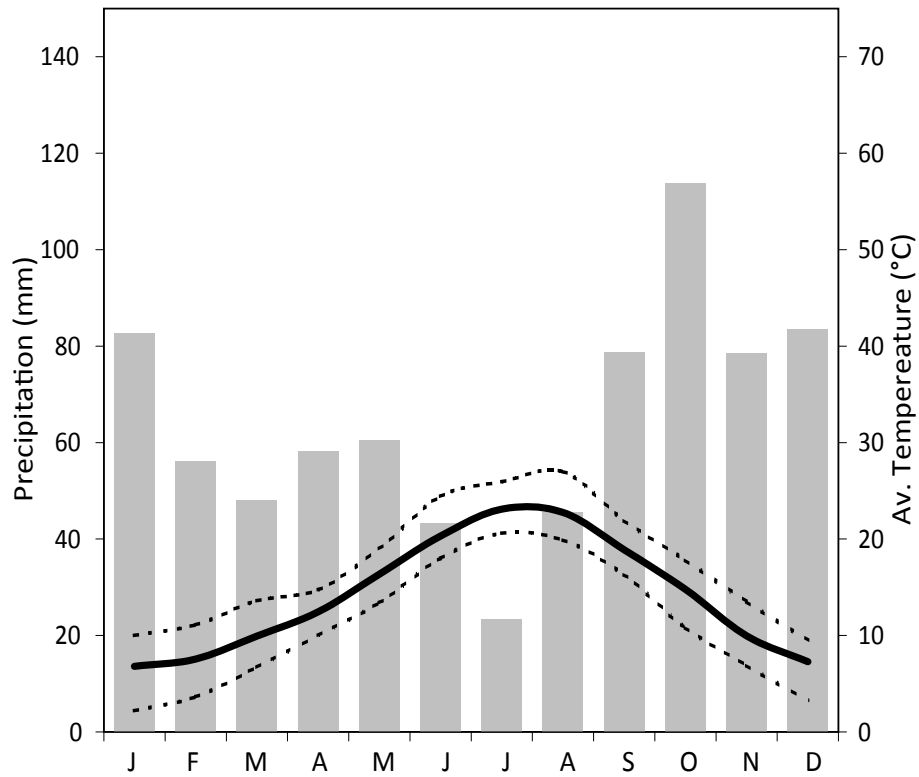


**Table 1.** Base statistics of the ring-width chronologies.

	Total	<i>Q. ilex</i>	<i>A. unedo</i>	Dolomite	Calc. sandstone	Flysch
No. trees sampled	34	19	15	8	9	17
Min. age (years)	34	44	34	34	51	44
Max. age (years)	78	76	78	76	60	78
No. trees used	23	12	11	8	7	12
No. radii	41	19	22	13	12	19
Average ring width (mm)	1.02	0.94	1.06	1.22	0.81	0.91
Min year-av ring width <sup>1</sup> (mm)	0.60	0.57	0.53	0.70	0.43	0.58
Max year-av ring width <sup>1</sup> (mm)	1.64	1.74	1.93	2.02	1.58	1.50
Normalized and detrended series						
Min ring width index	0.65	0.68	0.53	0.58	0.65	0.60
Max ring width index	1.61	1.64	1.98	1.70	1.83	1.59
Average correlation <sup>2</sup>	0.42	0.35	0.51	0.50	0.33	0.39
Sensitivity	0.46	0.36	0.55	0.38	0.45	0.49

<sup>1</sup> Minimum/maximum of yearly averaged ring widths in each chronology.

<sup>2</sup> Average correlation between the radii in each chronology over 38 years.



**Fig. 1.** Yearly average climate diagram of the study area for 1970–2008.

**Relating ring width of  
Mediterranean  
evergreen species**

W. Nijland et al.

Title Page

Abstract

Introduction

Conclusions

References

Tables

Figures

◀

▶

◀

▶

Back

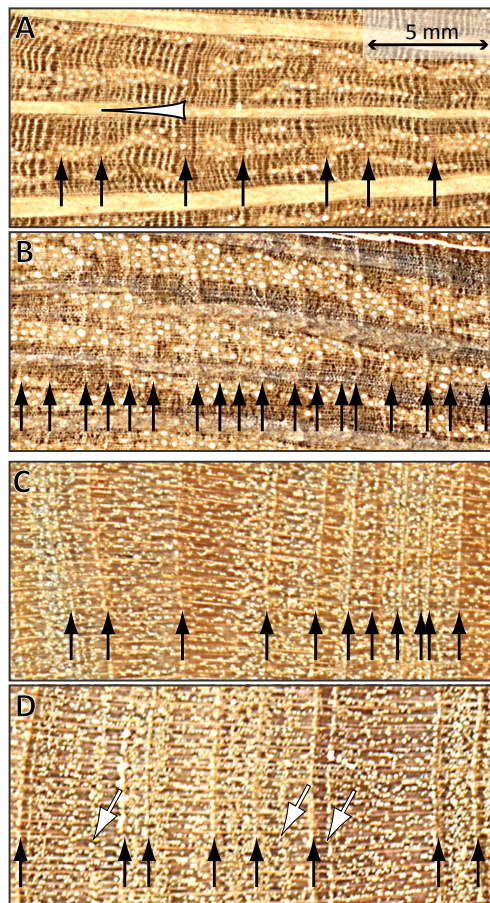
Close

Full Screen / Esc

Printer-friendly Version

Interactive Discussion



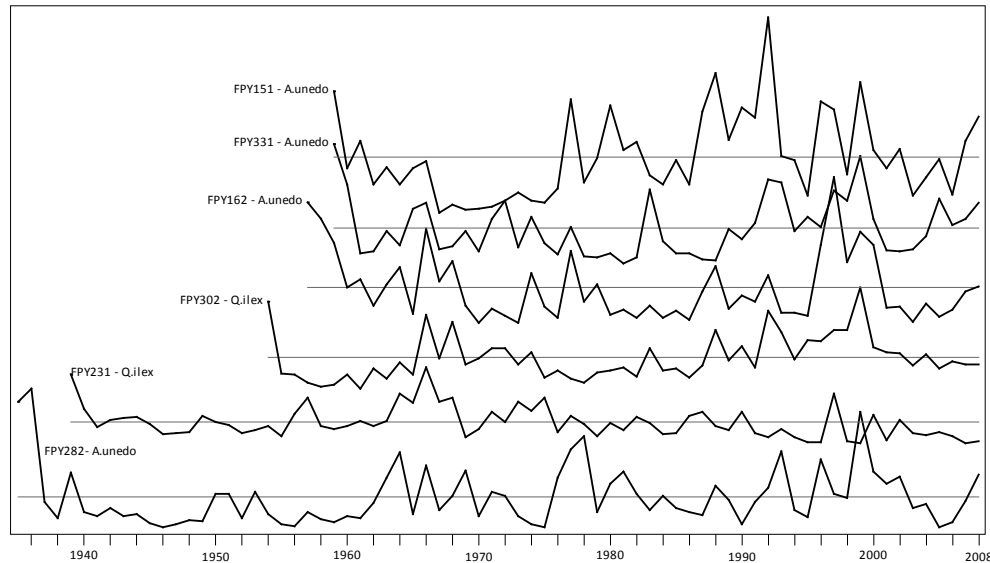


**Fig. 2.** Example wood sections of **(A, B)** *Q. ilex* and **(C, D)** *A. unedo* with true (black arrows) and false (white arrows) rings marked. The white marking in **(A)** indicates the decreasing vessel size within one year.



**Relating ring width of  
Mediterranean  
evergreen species**

W. Nijland et al.



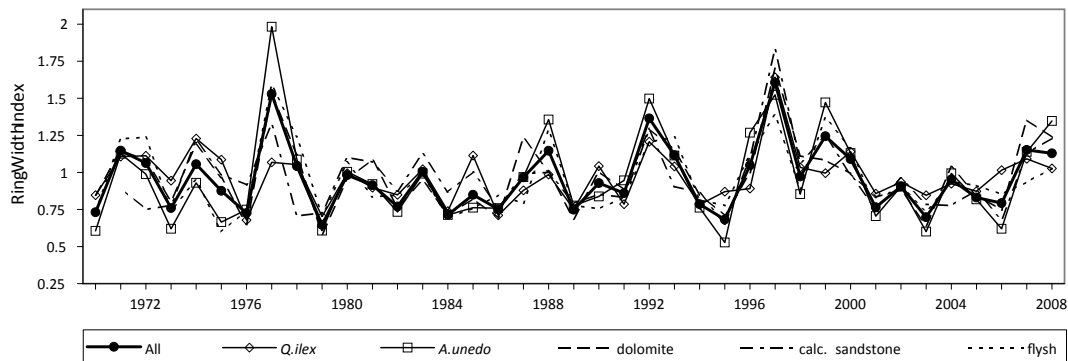
**Fig. 3.** Example ring-width series with characteristically large first rings reflecting coppice and resprouting growth of the forest.

[Title Page](#)[Abstract](#)[Introduction](#)[Conclusions](#)[References](#)[Tables](#)[Figures](#)[◀](#)[▶](#)[◀](#)[▶](#)[Back](#)[Close](#)[Full Screen / Esc](#)[Printer-friendly Version](#)[Interactive Discussion](#)



**Relating ring width of Mediterranean evergreen species**

W. Nijland et al.



**Fig. 4.** Normalized and detrended average ring width chronologies.

Title Page

Abstract

Introduction

Conclusions

References

Tables

Figures

◀

▶

◀

▶

Back

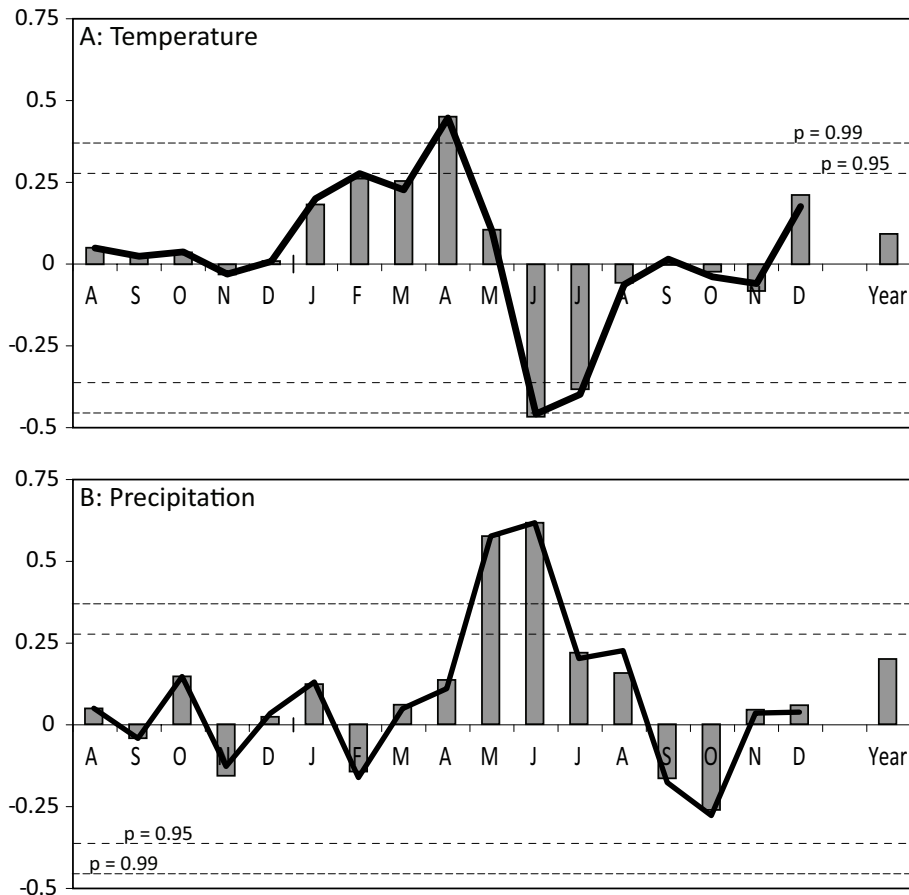
Close

Full Screen / Esc

Printer-friendly Version

Interactive Discussion

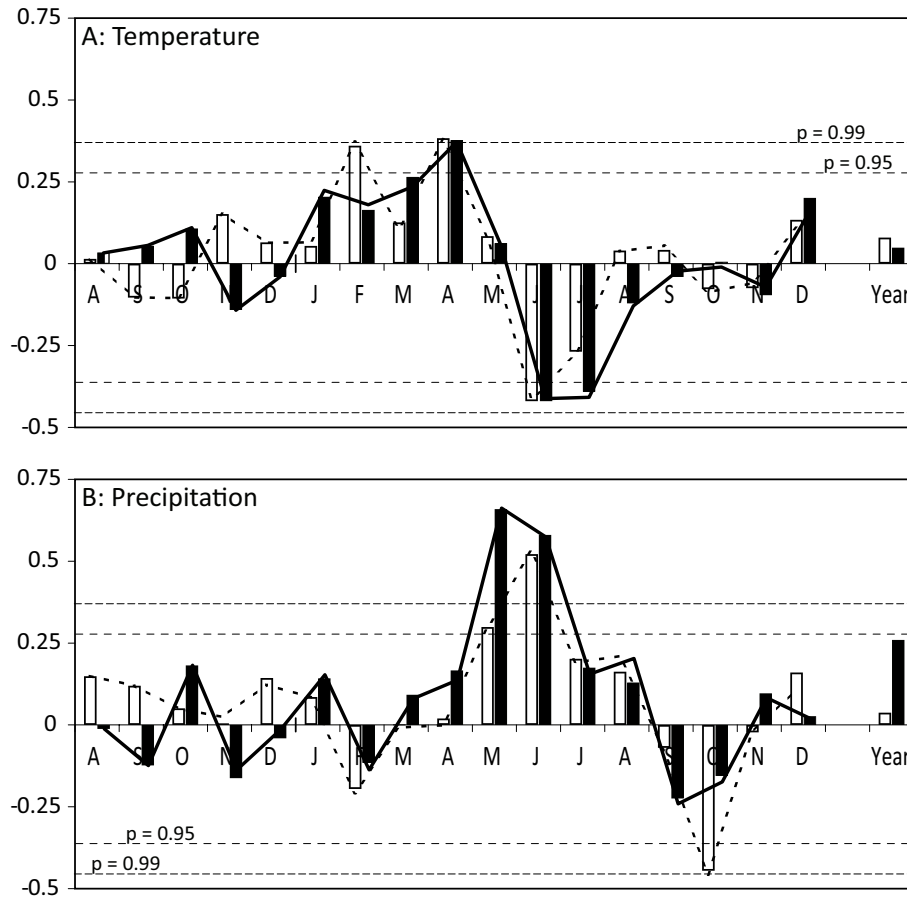




**Fig. 5.** Correlations (bars) and response functions of monthly average temperatures **(A)** and precipitation sums **(B)** with yearly growth indices of the all tree chronology.

## Relating ring width of Mediterranean evergreen species

W. Nijland et al.



**Fig. 6.** Correlations (bars) and response functions of monthly average temperatures (A) and precipitation sums (B) with yearly ring widths of the *Q. ilex* (white) and *A. unedo* (black) chronology.

Title Page

Abstract

Introduction

Conclusions

References

Tables

Figures

◀

▶

◀

▶

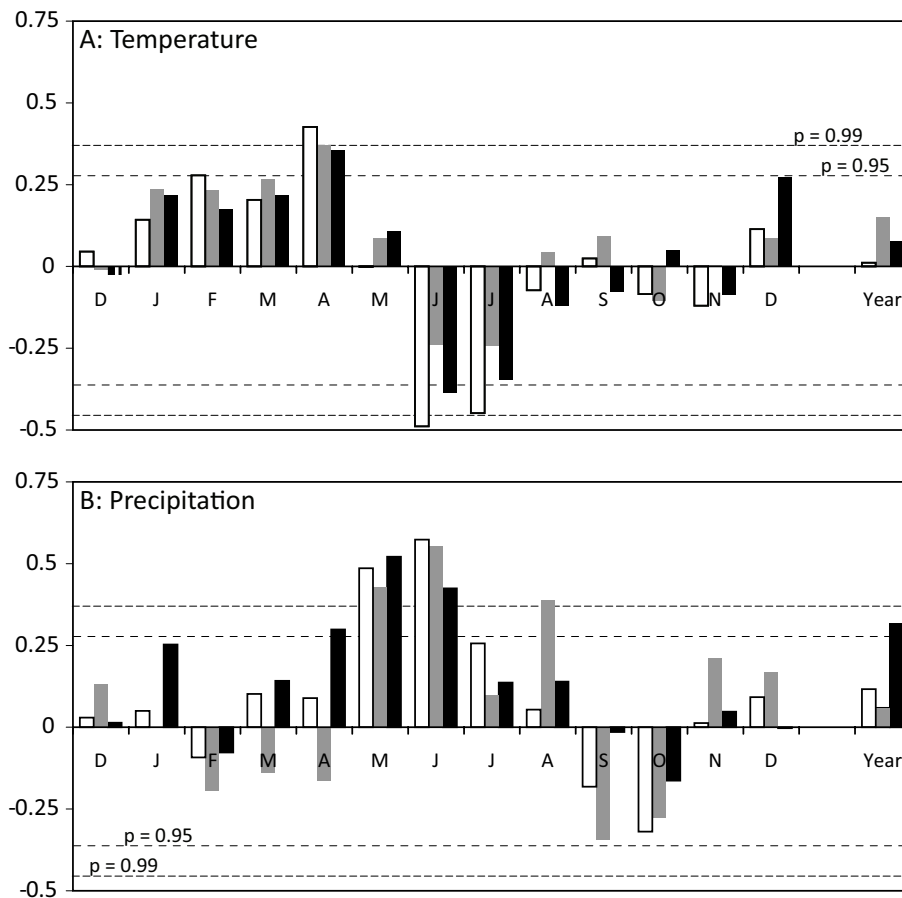
Back

Close

Full Screen / Esc

Printer-friendly Version

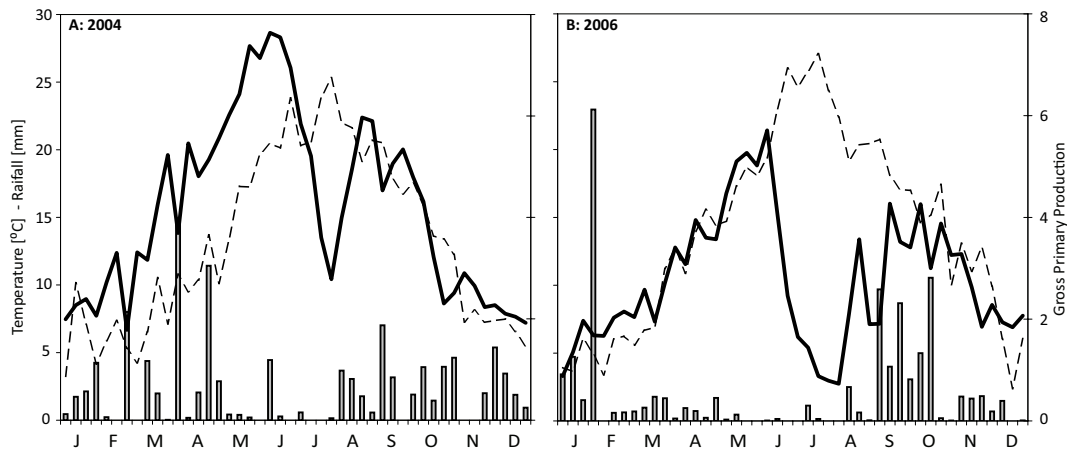
Interactive Discussion



**Fig. 7.** Correlations of monthly average temperatures **(A)** and precipitation sums **(B)** with yearly ring widths of the dolomite (white), calc. sandstone (gray), and flysch (black) chronologies.

## Relating ring width of Mediterranean evergreen species

W. Nijland et al.



**Fig. 8.** Weekly ecosystem gross productivity (black line), average temperatures (dotted line), and precipitation (bars), derived from flux measurements at Puechebon CarboeuropelP test site.

Title Page

Abstract

Introduction

Conclusions

References

Tables

Figures

◀

▶

◀

▶

Back

Close

Full Screen / Esc

Printer-friendly Version

Interactive Discussion

