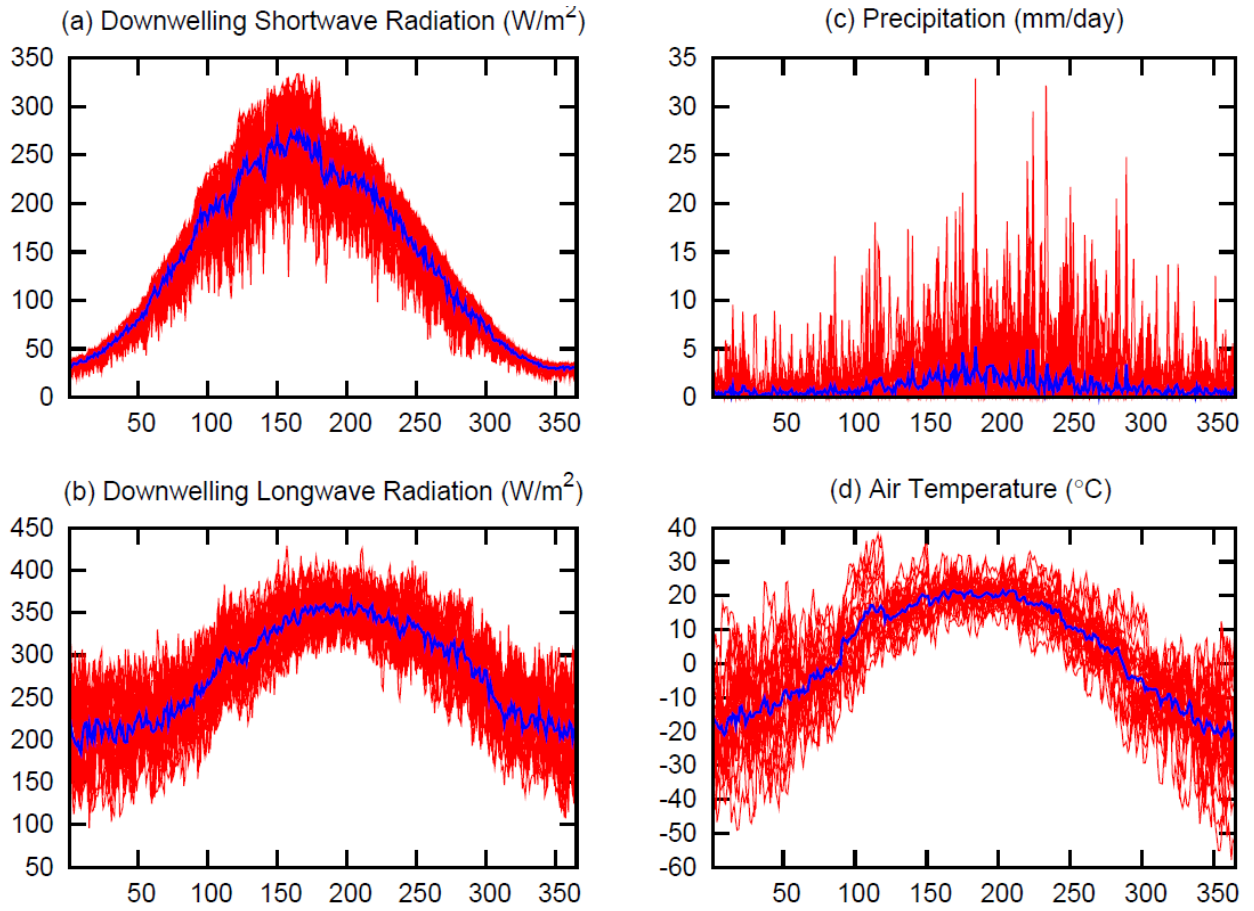


1

Supplementary Figures

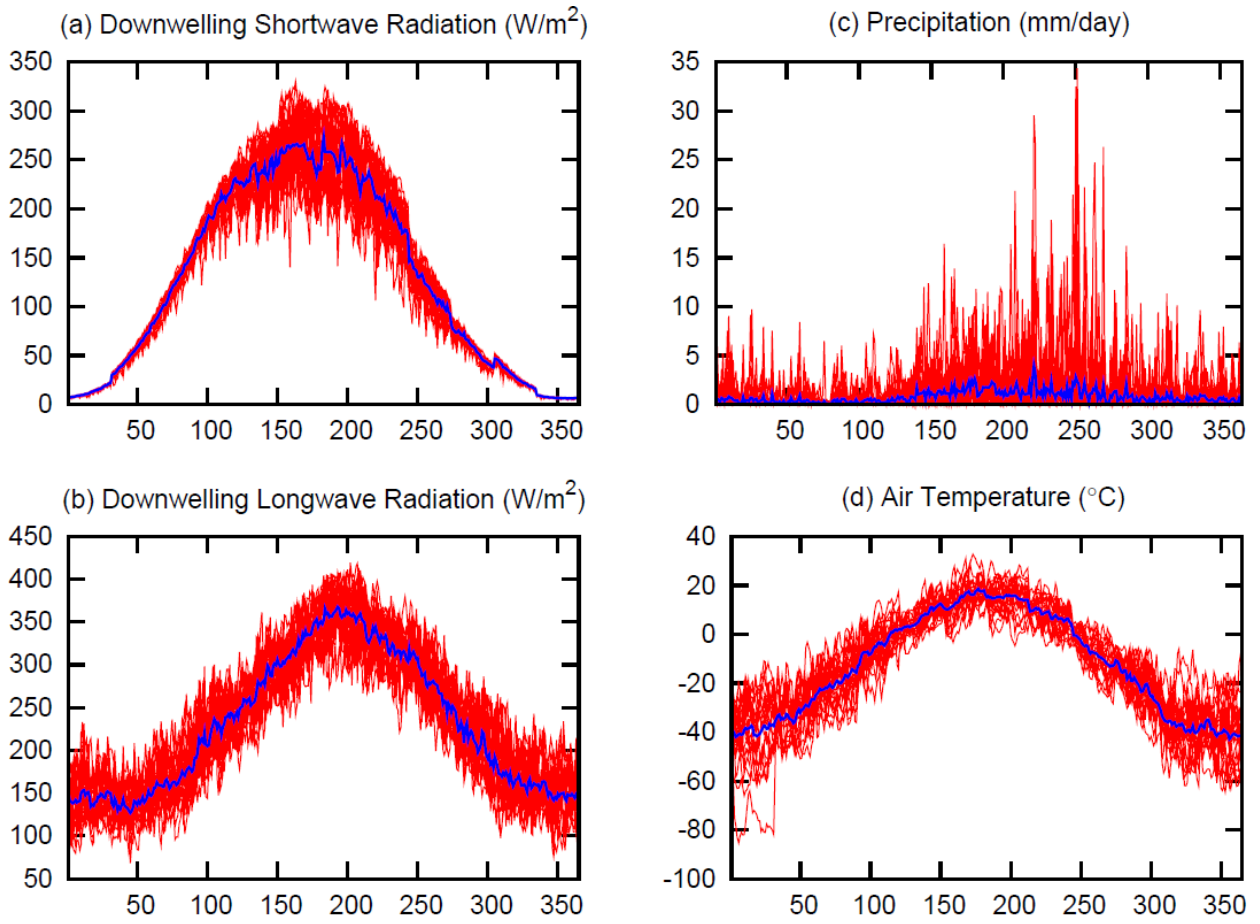


2

3

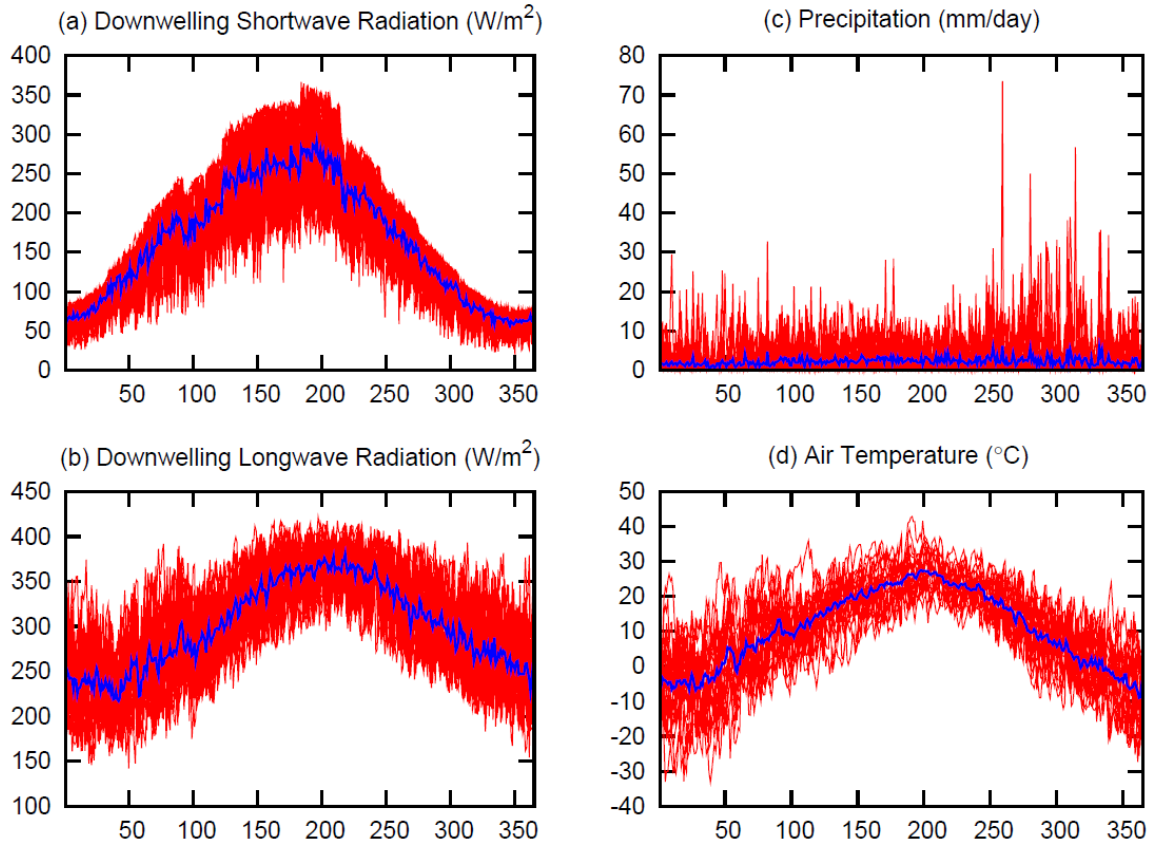
4

Figure S1: Annual cycle of primary meteorological variables used to drive the coupled CLASS and CTEM models at the Manitoba location



5

6 Figure S2: Annual cycle of primary meteorological variables used to drive the coupled
 7 CLASS and CTEM models at the Siberia location



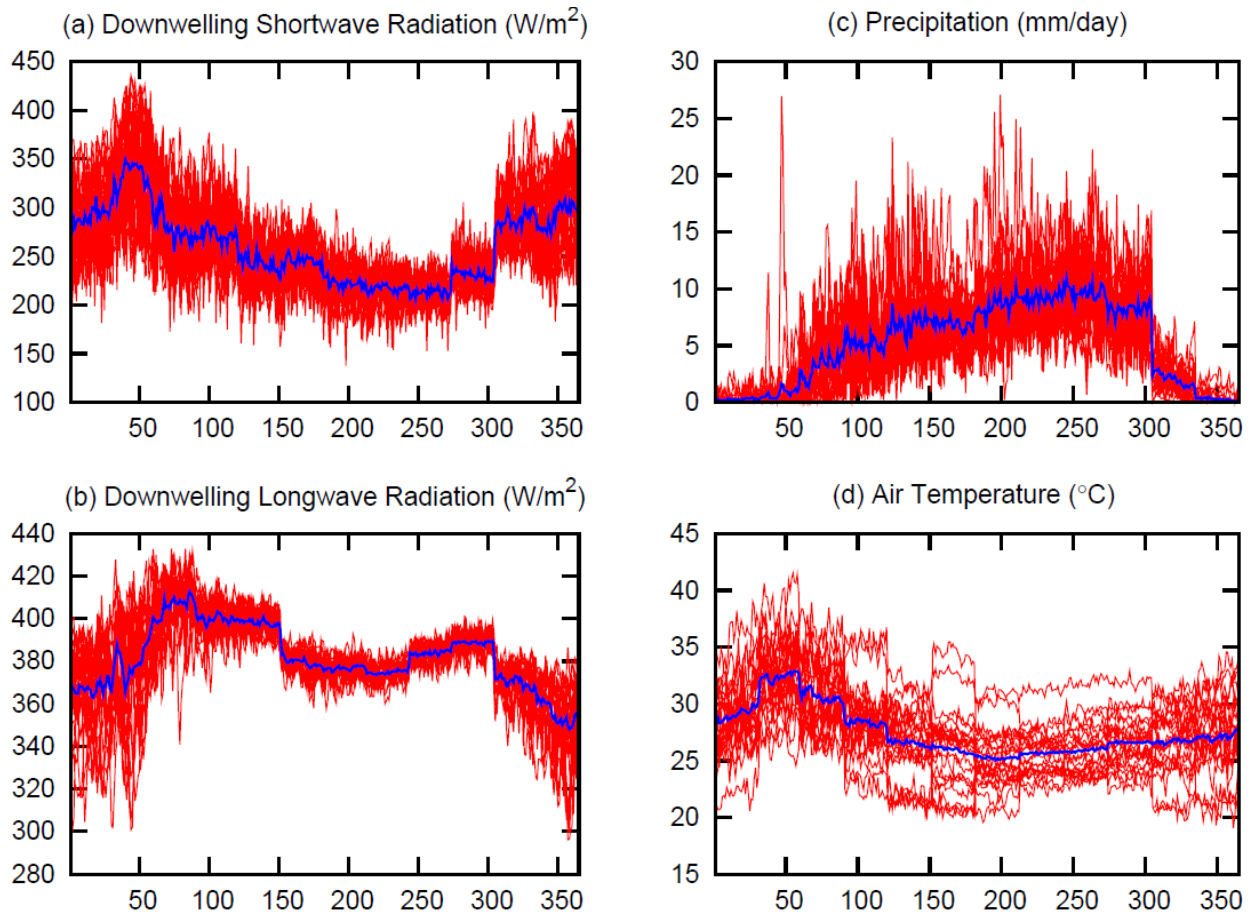
8

9

10

11

Figure S3: Annual cycle of primary meteorological variables used to drive the coupled CLASS and CTEM models at the eastern U.S. location



12

13

14

Figure S4: Annual cycle of primary meteorological variables used to drive the coupled CLASS and CTEM models at the Africa location