

This discussion paper is/has been under review for the journal Biogeosciences (BG).  
Please refer to the corresponding final paper in BG if available.

# Sensitivity analysis of the GEMS soil organic carbon model to land cover land use classification uncertainties under different climate scenarios in Senegal

A. M. Dieye<sup>1,2</sup>, D. P. Roy<sup>1</sup>, N. P. Hanan<sup>1</sup>, S. Liu<sup>3</sup>, M. Hansen<sup>1</sup>, and A. Touré<sup>2</sup>

<sup>1</sup>Geographic Information Science Center of Excellence, South Dakota State University, Brookings, SD 57007–3510, USA

<sup>2</sup>Centre de Suivi Ecologique, Fann Résidence, BP 15532, Dakar, Sénégal

<sup>3</sup>US Geological Survey Earth Resources Observation and Science, Sioux Falls, SD 57198, USA

Received: 11 June 2011 – Accepted: 20 June 2011 – Published: 8 July 2011

Correspondence to: A. M. Dieye (amadou.dieye@sdstate.edu)

Published by Copernicus Publications on behalf of the European Geosciences Union.

**BGD**

8, 6589–6635, 2011

## Sensitivity analysis of the GEMS soil organic carbon model

A. M. Dieye et al.

Title Page

Abstract

Introduction

Conclusions

References

Tables

Figures

⏪

⏩

◀

▶

Back

Close

Full Screen / Esc

Printer-friendly Version

Interactive Discussion

Discussion Paper | Discussion Paper | Discussion Paper | Discussion Paper | Discussion Paper | Discussion Paper | Discussion Paper | Discussion Paper | Discussion Paper

## Abstract

Spatially explicit land cover land use (LCLU) change information is needed to drive biogeochemical models that simulate soil organic carbon (SOC) dynamics. Such information is increasingly being mapped using remotely sensed satellite data with classification schemes and uncertainties constrained by the sensing system, classification algorithms and land cover schemes. In this study, automated LCLU classification of multi-temporal Landsat satellite data were used to assess the sensitivity of SOC modeled by the Global Ensemble Biogeochemical Modeling System (GEMS). The GEMS was run for an area of 1560 km<sup>2</sup> in Senegal under three climate change scenarios with LCLU maps generated using different Landsat classification approaches. This research provides a method to estimate the variability of SOC, specifically the SOC uncertainty due to satellite classification errors, which we show is dependent not only on the LCLU classification errors but also on where the LCLU classes occur relative to the other GEMS model inputs.

## 1 Introduction

Africa is experiencing rapid and substantial social, economic, climatic and environmental change (Brooks, 2004; Challinor et al., 2007; IPCC, 2007; Nkonya et al., 2011). Soil carbon is important in West African drylands for soil fertility and agricultural sustainability and the influence of land management under changing climate on soil carbon is of particular interest (Batjes, 2001; Lal, 2004; Tieszen et al., 2004). Biogeochemical model simulations of carbon dynamics in vegetation and soil in response to changes in land cover and land use (LCLU), land management and climate increasingly use spatially explicit LCLU data derived from satellite remote sensing (Turner et al., 2000; Liu et al., 2004; Kennedy et al. 2006; Liu et al., 2008, Tan et al., 2009). There is a recognition however that errors in satellite derived LCLU data, both in terms of classification errors and the degree of generalization of the landscape into the different LCLU

**BGD**

8, 6589–6635, 2011

## Sensitivity analysis of the GEMS soil organic carbon model

A. M. Dieye et al.

Title Page

Abstract

Introduction

Conclusions

References

Tables

Figures

⏪

⏩

◀

▶

Back

Close

Full Screen / Esc

Printer-friendly Version

Interactive Discussion

classes, and differences between LCLU data sources and land cover classification approaches, may propagate into model outputs (DeFries et al., 1999; Reich et al., 1999; Turner et al., 2000; Quaife et al., 2008).

Remotely sensed satellite data have been used extensively to map land cover (Tucker et al., 1985; Pickup et al., 1993; Lambin and Strahler, 1994) although human influences are difficult to discern reliably except when using high spatial resolution data (Townshend and Justice, 1988). Consequently, high spatial resolution data, in particular from the Landsat satellite series, have been used for mapping land cover change over decadal periods (Skole and Tucker, 1993; Gutman et al., 2008). Satellite classification by visual photo interpretation is not suited to mapping large areas on the consistent and repeated basis required for long term monitoring. Automated techniques that use digital computer processing and statistical classification approaches largely overcome this issue, but also do not provide error free classifications. Furthermore, it is not usually possible to reliably map land use, i.e. the land's social, economical, and cultural utility, using automated techniques (Turner et al., 1997). In semi-arid areas, such as the West African Sahel, satellite land cover classification is particularly challenging because the vegetation types may be sparsely distributed across variable soil backgrounds and because they frequently transition and mix across the landscape at scales finer than the satellite pixel dimension (Frederiksen and Lawesson, 1992; Prince et al., 1990; Lambin and Ehrlich, 1997). Further, semi-arid vegetation often exhibits a marked seasonality in photosynthetic activity and leaf area in response primarily to seasonal precipitation, making the selection of appropriate satellite acquisitions important (Hiernaux and Justice, 1986).

The General Ensemble biogeochemical Modeling System (GEMS) is a well-established biogeochemical model developed for spatially and temporally explicit simulation of biogeochemical cycles (Liu et al., 2004; Tan et al., 2009). In this paper the sensitivity of GEMS modelled soil organic carbon to satellite LCLU mapping uncertainties is quantified for a semi-arid Sahelian region of Senegal. Supervised decision tree classification approaches are used to map LCLU from multi-temporal Landsat satellite

**BGD**

8, 6589–6635, 2011

## Sensitivity analysis of the GEMS soil organic carbon model

A. M. Dieye et al.

Title Page

Abstract

Introduction

Conclusions

References

Tables

Figures

⏪

⏩

◀

▶

Back

Close

Full Screen / Esc

Printer-friendly Version

Interactive Discussion



data which are used to drive sapatially explicit maps of GEMS soil organic carbon under different climate change scenarios. A description of the study area (Sect. 2), the Landsat data and pre-processing (Sect. 3) and the GEMS input data and parameterization (Sect. 4) are described. This is followed by description of the LCLU classification (Sect. 5) and carbon modeling and sensitivity analysis methodologies (Sect. 6). The results are presented and discussed (Sect. 7), preceding the concluding remarks (Sect. 8).

## 2 Study area

The study area is located in the north of Senegal, bordered by the Senegal River to the North and the Atlantic Ocean to the west, with the southern edge 100 km north of Dakar (Fig. 1). It covers 1560 km<sup>2</sup> lying between 15°24' to 17°00' W and 15°00' to 16°42' N. The area has a semi-arid climate with a single rainy season from June–July through September–October; average rainfall decreased from 400–600 mm in the 1960's to 200–400 mm in the 1990's, mean monthly temperature varies from 24.5 °C in January to 31.9 °C in May (Fall et al., 2006).

The study area includes a wide range of land covers and land uses, and consequently soil organic carbon, making it appropriate for the sensitivity analysis described in this paper. Most agricultural activities in the study area are undertaken during the rainy season, planting occurs in June followed by harvesting in late October through November. Flood recession farming is practiced in the Senegal River valley and irrigated crop production, largely dominated by vegetable production, is practiced where groundwater is available elsewhere. The dominant natural vegetation species are, trees: *Acacia raddiana*, *Balanites aegyptica*, *Sclerocarya birrea*, *Combretum glutinosum*, *Adansonia digitata* (baobab tree); shrubs: *Guiera senegalensis*, *Boscia senegalensis*, *Calotropis procera*; and grasses include primarily *Cenchrus biflorus*, *Schoenefeldia gracilis* and *Dactyloctenium aegyptium*. In order to summarize the region succinctly we refer to the Senegalese ecoregions defined by Tappan et

**BGD**

8, 6589–6635, 2011

## Sensitivity analysis of the GEMS soil organic carbon model

A. M. Dieye et al.

Title Page

Abstract

Introduction

Conclusions

References

Tables

Figures

⏪

⏩

◀

▶

Back

Close

Full Screen / Esc

Printer-friendly Version

Interactive Discussion



al. (2004). The study area encompasses four of the 13 ecoregions, and these are described below.

The smallest ecoregion (2% of the study area), is a narrow strip of land (10 to 30 km wide) along the Atlantic coast (120 km) from Saint-Louis to Dakar. The predominant soils are ferruginous tropical sandy soils, deep and well drained, low in organic matter and mineral content (Tappan et al., 2004). The ecoregion is characterized by geomorphological features composed of active littoral and stabilized continental sand dunes that alternate with longitudinal depressions. The sand dunes support shrub savanna used by pastoralists as grazing land. The longitudinal depressions, locally called *niayes*, have given their name to the region as a whole, and are used for irrigated agriculture owing to the shallow water table accessed by artisanal wells. The main irrigated agricultural land use is market gardening, primarily carrots, onions, and cabbages, for sale in Dakar. Beginning in the early 1980's, coastal sand dune stabilization projects planted drought-tolerant Whispering Pine (*Casuarina equisetifolia*) which cover much of the coastal zone from Dakar to Saint-Louis (Tappan et al., 2004; CSE, 2005). A second ecoregion, lying east of the smallest ecoregion, and covering 45% of the study area, includes much of the *peanut basin*, an area dedicated since the 1880s to groundnut cultivation. The predominant soils are slightly leached ferruginous tropical sandy soils lying in the plateau of the continental sedimentary basin. The main crops are millet, groundnuts, and sorghum in acacia tree parkland, which have replaced all vestiges of the pre-colonial woodland savanna landscape (Tappan et al., 2004). A third ecoregion, lying in the north east (east of Lake Guiers, Fig. 1) and covering 43% of the study area, is the *sandy ferlo*. It constitutes Senegal's main sylvo-pastoral zone, an area that is generally too dry for crop production, with mean annual precipitation less than 200 mm. The vegetation is composed of open grasslands with scattered shrubs and predominantly acacia trees on red-brown sandy and ferruginous tropical sandy soils. The last ecoregion (11% of the study area) is the Senegal River Valley, a floodplain previously covered by riverine woodland, today used for irrigated-agricultural projects that pump water from the Senegal River onto extensive rice and sugarcane fields. The

## Sensitivity analysis of the GEMS soil organic carbon model

A. M. Dieye et al.

Title Page

Abstract

Introduction

Conclusions

References

Tables

Figures



Back

Close

Full Screen / Esc

Printer-friendly Version

Interactive Discussion



predominant soils are hydromorphic and vertic with a sandy, clay loam, and clay. The natural vegetation is open steppe, shrub steppe, and riparian acacia woodland.

### 3 Satellite data

#### 3.1 Landsat data

5 Landsat Enhanced Thematic Mapper Plus (ETM+) satellite data were used in this study. All six 28.5m reflective, the two 57m thermal (low and high gain), and the single 15m panchromatic bands were used. Each ETM+ scene is approximately 180 × 180 km and is defined in the UTM coordinate system and referenced by a unique Landsat Worldwide Reference System (WRS-2) path and row coordinate (Arvidson et al., 2001).

10 Multi-temporal satellite data provide improved land cover classification accuracies over single-date classifications if the acquisitions capture seasonal and agricultural differences (Lo et al., 1986; Schriever and Congalton, 1993). Consequently, in this study two Landsat ETM+ scenes, acquired in 2002 in the early wet season (21 June) and the dry season (30 December) over the study area, WRS-2 scene path 205 row 49, were used. These acquisitions were selected because they were the only available scenes with very low (< 1%) cloud cover. They are considered to be representative of the year 2000 in the subsequent GEMS modeling.

#### 3.2 Landsat data pre-processing

20 Landsat data are affected by several factors that need to be corrected before multi-date data can be compared reliably (Coppin et al., 2004). In this study, corrections for radiometric, atmospheric and geometric effects were undertaken. The ETM+ reflective bands were converted from digital numbers to at satellite reflectance using the best available ETM+ calibration coefficients and standard correction formulae taking into

**BGD**

8, 6589–6635, 2011

## Sensitivity analysis of the GEMS soil organic carbon model

A. M. Dieye et al.

Title Page

Abstract

Introduction

Conclusions

References

Tables

Figures



Back

Close

Full Screen / Esc

Printer-friendly Version

Interactive Discussion



## Sensitivity analysis of the GEMS soil organic carbon model

A. M. Dieye et al.

Title Page

Abstract

Introduction

Conclusions

References

Tables

Figures

⏪

⏩

◀

▶

Back

Close

Full Screen / Esc

Printer-friendly Version

Interactive Discussion

account the solar constant (Markham and Baker, 1986). The thermal bands were similarly converted from digital numbers to effective at satellite temperature using standard coefficients and Planck function formulae (USGS, 2001). The impact of the atmosphere is variable in space and time and is usually considered as requiring correction for quantitative and change detection applications (Ouaidrari and Vermote, 1999; Coppin et al., 2004). Several Landsat atmospheric correction methods have been proposed, with the dark-object subtraction (DOS) method widely used due to its methodological simplicity (Chavez, 1996). In the DOS approach, atmospheric path radiance is assumed to be equal to the radiance sensed over dark objects, such as dense vegetation or water, and is subtracted from each band. In this study, each Landsat acquisition was normalized using a dark object subtraction method to reduce scene-to-scene and within scene radiometric variations associated with atmospheric, phenological, and sun-sensor-target geometric variations. Surface reflectances were computed independently using inland water bodies and a small number of cloud shadows as dark objects. Clouds and cloud shadows were screen digitized manually and not considered in the subsequent analysis as they preclude optical wavelength remote sensing of the surface and deleteriously contaminate surface reflectance (Roy et al., 2010).

The two ETM+ acquisitions had already been ortho-rectified following established procedures (Tucker et al., 2004). However, to ensure precise sub-pixel co-registration, an image-to-image registration was performed using 25 ground control points identified in both scenes, and the December image was nearest neighbor resampled into reference with the June acquisition using a first-order polynomial warping transformation.

## 4 GEMS model, input data and parameterization

### 4.1 GEMS model overview

The General Ensemble biogeochemical Modeling System (GEMS) was developed from the CENTURY model (Metherell et al., 1993) to enable integration of spatially explicit

## Sensitivity analysis of the GEMS soil organic carbon model

A. M. Dieye et al.

Title Page

Abstract

Introduction

Conclusions

References

Tables

Figures

⏪

⏩

◀

▶

Back

Close

Full Screen / Esc

Printer-friendly Version

Interactive Discussion

GIS data, including land cover, soils, climate, and land management practice information (Liu et al., 2008). CENTURY is an established plant-soil ecosystem model that simulates the dynamics of carbon, nitrogen, and phosphorus in various ecosystems including grassland, forest, savanna, and crop systems (Metherell et al., 1993; Parton et al., 2004). The input parameters comprise site specific biophysical data, plant characteristics, and management data, including monthly precipitation, monthly maximum and minimum air temperature, soil texture, bulk density, drainage, water holding capacity, cropping systems, fertilization, cultivation, harvesting, grazing, tree removal, and natural disturbances such as fire (Parton et al., 2004; Liu et al., 2004). GEMS couples CENTURY with various spatial databases to simulate biogeochemical cycles over large areas (Liu et al., 2004, 2008).

GEMS consists of three major components: an encapsulated ecosystem biogeochemical model (i.e., CENTURY), a data assimilation system (DAS), and an input/output processor (IOP). The DAS includes algorithms that search and retrieval relevant information from various databases according to the keys provided by a joint frequency distribution (JFD) table and data processing mechanisms (Liu et al., 2004). The IOP incorporates the assimilated data to the modeling processes and in return writes the selected output variables to a set of output files after each model run. The main output variable of interest for this study is the total soil organic carbon (SOC) ( $\text{gC m}^{-2}$ ) in the top 0–20 cm soil layer. Soil organic matter is a key indicator of soil quality and is most usually determined by application of conversion factors to estimates of the soil organic carbon to some prescribed depth (Lal, 2004). The GEMS model includes three soil organic matter pools (active, slow and passive) with different potential decomposition rates or turnover, fast turnover (active SOM), intermediate turnover (slow SOM) and slow turnover (passive SOM) (Metherell et al., 1993). In addition, the GEMS above ground net primary production (NPP) ( $\text{gC m}^{-2} \text{yr}$ ) is examined to ensure that the SOC and NPP values are plausible and spatially coherent. The GEMS model inputs are described below for the spatially explicit input data and the GEMS look up table parameterizations.



## 4.2 GEMS spatially explicit input data

### 4.2.1 Land Cover Land Use (LCLU) data

Spatially explicit 28.5 m LCLU maps representing the year 2000 were derived by multiple classifications of the Landsat ETM+ satellite data using a number of approaches described in detail in Sect. 5.

### 4.2.2 Climate data

Spatially and temporally explicit climate data were defined using 37 years of monthly average precipitation and minimum and maximum air temperature data defined in 0.05 degree grid cells (Hutchinson et al., 1996) nearest neighbor resampled to the 28.5 m Landsat pixel dimensions. These monthly data were available for the period 1960–1996 and were used to “spin-up” the GEMS model to 1900 equilibrium, and then to run the GEMS model from 1990 to 2000 and to run the GEMS model for three future climate scenarios from 2000 to 2052. The future climate scenarios (no change, low and high change) were developed following the approach developed by Hulme et al. (2001) who assessed possible future (2000–2100) changes in temperature and rainfall for Africa using seven global climate models. The Hulme et al. (2001) approach and results are considered (Tan et al., 2009) to be compliant and comparable with those from the IPCC Fourth Assessment Report (Christensen et al., 2007). Monthly climatologies of the 1960–1996 precipitation and minimum and maximum air temperature data were derived (i.e. 12 monthly values per 28.5 m Landsat pixel). The no climate change scenario (NCCS) simply used the same monthly values of these data for each month of 2000 to 2052. The low climate change (LCCS) and high climate change (HCCS) scenarios were defined by weighting the monthly climatology values using the following equations derived from Hulme et al. (2001) for the study area:

Low Climate Change Scenario (LCCS):

$$\text{Temperature : change (}^{\circ}\text{C)} = 0.0133 \cdot \text{year} - 26.6 \quad (1)$$

6597

**BGD**

8, 6589–6635, 2011

## Sensitivity analysis of the GEMS soil organic carbon model

A. M. Dieye et al.

Title Page

Abstract

Introduction

Conclusions

References

Tables

Figures

⏪

⏩

◀

▶

Back

Close

Full Screen / Esc

Printer-friendly Version

Interactive Discussion



$$\text{Precipitation : change (\%)} = -0.25 \cdot \text{year} + 500 \quad (2)$$

High Climate Change Scenario (HCCS):

$$\text{Temperature : change (°C)} = 0.06 \cdot \text{year} - 120 \quad (3)$$

$$\text{Precipitation : change (\%)} = -0.55 \cdot \text{year} + 1100 \quad (4)$$

where year is set from 2000 to 2052. In this way, the LCCS and HCCS values are equal to the NCCS values in the year 2000 and under the low climate change scenario by 2052 the temperature is 0.69 °C warmer with 13 % less precipitation, and under the high climate change scenario by 2052 the temperature is 3.12 °C warmer with 28.6 % less precipitation. We note that these scenarios do not model inter-annual variability in precipitation and minimum and maximum air temperature data, which is a limitation but not a concern for the purposes of this sensitivity study, and is the same approach used by Liu et al. (2004) and Tan et al. (2009) to prescribe climate scenarios in studies in Ghana and Senegal.

### 4.2.3 Soil, drainage and water holding capacity data

A map of static soil information was extracted from a Senegalese 1:500 000 vector soil atlas defined with 168 soil units (Stancioff et al., 1986). Soil characteristics were defined for the 45 soil units falling in the study area using a look up table with respect to texture (i.e., fractions of sand, silt, and clay), drainage state, and water holding capacity. Sand fractions varied from 51 % and 87 %, silt fractions from 11 % to 38 %, clay fractions from 5 % to 15 %. The drainage state varied from poorly drained (=0) to overly well drained (=5), and the water holding capacity varied from high (clay = 5) to low (sand = 1).

### 4.2.4 Potential natural vegetation data

A static potential natural vegetation (PNV) map for 1900 was needed to run the GEMS model to equilibrium. In the absence of a PNV for Senegal, the earliest available

**BGD**

8, 6589–6635, 2011

## Sensitivity analysis of the GEMS soil organic carbon model

A. M. Dieye et al.

Title Page

Abstract

Introduction

Conclusions

References

Tables

Figures



Back

Close

Full Screen / Esc

Printer-friendly Version

Interactive Discussion



vegetation map (Stancioff et al., 1986) developed by visual interpretation of 1985 Landsat data supplemented by intensive field survey was used. The map was nearest neighbor resampled to the 28.5 m Landsat pixel dimensions, assigning to each output 28.5 m pixel the value in the input data set nearest its centre. This map is considered as the most authoritative in its domain for Senegal for the 1980's (Tappan et al., 2004).

### 4.3 GEMS look-up-table parameterization

Vegetation biomass and land management practices were parameterized using look-up-tables related to the derived Landsat land cover land use (LCLU) classification data. Joint frequency distributions of the look-up-table variables values for each of the Landsat LCLU classes were developed following established GEMS conventions (Liu et al., 2004).

#### 4.3.1 Vegetation biomass parameterization

Vegetation attributes required for the model parameterization were synthesized from an inventory of soil and biomass samplings conducted in Senegal during the last 20 years (CSE, 2004; Woomer et al., 2004b; Tschakert et al., 2004). Above-ground biomass (trees, herbs, and litter) and their carbon stocks were calculated using allometric formulae (Woomer et al., 2004a; Brown, 1997). The root biomass of trees and herbs were estimated as 0.35 and 0.15 of the above-ground biomass, respectively, based on field observations (Woomer et al., 2004a). The proportion of carbon in all biomass pools was set as 0.47 (Woomer et al., 2004a).

#### 4.3.2 Management practices

Management practices that affect carbon dynamics were used: crop composition, crop rotation probability, temporal changes of harvest practices, cropping practices (including plowing and selective cutting), fertilizer use, fallow probability and fallow length,

**BGD**

8, 6589–6635, 2011

## Sensitivity analysis of the GEMS soil organic carbon model

A. M. Dieye et al.

Title Page

Abstract

Introduction

Conclusions

References

Tables

Figures

⏪

⏩

◀

▶

Back

Close

Full Screen / Esc

Printer-friendly Version

Interactive Discussion



5 fire frequency, and frequency and intensity of grazing. These practices were compiled from annual agricultural acreage and yield statistics, and livestock census data defined by Senegalese administrative units (départements) (CSE, 2002) and from information collated in previous studies (Touré et al., 2003; Manlay et al., 2002; Tchakert et al., 2004a). The management practices are summarized in Table 1 and were considered in terms of non-arable (including pastoralism) and arable land uses defined by the Landsat classified LCLU class. The main crops grown are millet, sorghum, and groundnuts. Fallow lengths were set as 1–5 years with successive 5–10 years of cropping. Non-subsistence agriculture was assumed to have started in 1920 with current mineral fertilizer use varying from 0 to 300 kg ha<sup>-1</sup> (Tschakert et al., 2004). Before this date, the study area was assumed to be savanna with low to moderate grazing (little influence on plant production) that rose to current high grazing rates of 12 to 30 tropical livestock units per km<sup>2</sup> (CSE, 2002), with an assumed linear effect on plant production (Woomer et al., 2004a).

## 15 5 Landsat satellite data classification

The six 28.5 m reflective, and the two 57 m thermal (low and high gain) bands nearest neighbor resampled to 28.5 m were classified together as described below. Clouds and cloud shadows were visually identified (< 1% of the image) and masked from both Landsat acquisitions and were not classified. The dry and wet season Landsat data were classified together, rather than independently.

### 5.1 Landsat LCLU classification scheme and training data

25 The state of the practice for automated satellite classification is to adopt a supervised classification approach where samples of locations of known land cover classes (training data) are collected. The optical and thermal wavelength values sensed at the locations of the training pixels are used to develop statistical classification rules, which

**BGD**

8, 6589–6635, 2011

## Sensitivity analysis of the GEMS soil organic carbon model

A. M. Dieye et al.

Title Page

Abstract

Introduction

Conclusions

References

Tables

Figures

⏪

⏩

◀

▶

Back

Close

Full Screen / Esc

Printer-friendly Version

Interactive Discussion



are then used to map the land cover class of every pixel (Brieman et al., 1984; Foody et al., 2006). Supervised classification results depend on the appropriateness of the LCLU class nomenclature and on the quality of the training data used.

Table 2 summarizes the nine LCLU classes and the number of Landsat training pixels for each class. These nine classes were selected by examination of pre-existing land cover maps including a land cover map of the north of Senegal generated by the Centre de Suivi Ecologique (CSE, 2002) and were selected to ensure that the classes were mutually exclusive and that every part of the study area could be classified into one and only one class (Anderson et al., 1976). The CSE land cover map used the Yangambi vegetation classification scheme that contains 25 vegetation classes defined according to their physiognomy (i.e. structure and form of vegetation groups) (Monod, 1956; Trochain, 1957). The Yangambi scheme predates by two decades the availability of satellite data, and the different Yangambi vegetation classes were not always spectrally unambiguous from one another in the multi-date Landsat data. For these reasons several of the Yangambi classes were combined and three vegetation classes, savanna grassland, mangrove and wetlands, were considered. In addition, the study area includes non-vegetated surfaces not considered in the Yangambi scheme, and the classes water, bare soil, rainfed agriculture, mud flats, and irrigated agriculture) were identified based on our expert knowledge of the study area and multi-annual field visits.

Training pixels for each class were selected by visual analysis of the co-registered dry and wet season 2002 ETM+ imagery, augmented by our expert knowledge of the study area including information gathered during multi-annual field visits. Only training pixels that could be unambiguously identified were collected. A total of 11 717 Landsat 28.5 m training pixels were selected (Table 2). Ideally, the training data should be representative of the area classified and of the classes in the classification scheme, although there is no statistical procedure to define a suitable number and spatial distribution without a priori information concerning the area (Stehman, 1997; Foody et al., 2006). Great care was taken in the training data collection. The land use-related

**BGD**

8, 6589–6635, 2011

## Sensitivity analysis of the GEMS soil organic carbon model

A. M. Dieye et al.

Title Page

Abstract

Introduction

Conclusions

References

Tables

Figures

⏪

⏩

◀

▶

Back

Close

Full Screen / Esc

Printer-friendly Version

Interactive Discussion



classes (irrigated agriculture, rainfed agriculture, plantation forest) were the most difficult to reliably collect training data for. Irrigated agriculture is a unique characteristic of the Senegal River Valley and was interpretable on the Landsat data owing to the patterns of irrigation channels within and adjacent to agricultural fields. The peanut basin is the foremost rainfed agriculture area of Senegal, and polygonal rainfed agricultural fields were distinguishable by differences between the wet and dry season Landsat acquisitions. Plantation forest in the *Niayes* ecoregion forms a distinctive strip observable on the Landsat data.

Settlements contain different LCLU classes and consequently are difficult to classify reliably (Barnsely and Barr, 1997; Sun et al., 2003). This was particularly true for the rural villages occurring across the study area, which tended to be small and heterogeneous relative to the Landsat 28.5 m pixel size. Consequently, all of the settlements were screen digitized manually and were not considered subsequently in the carbon modeling.

## 5.2 Classification approaches

The Landsat ETM+ data were classified using bagged decision tree approaches. Decision trees are hierarchical classifiers that predict class membership by recursively partitioning data into more homogeneous subsets (Breiman et al., 1984). Trees can accept either categorical data in performing classifications (classification trees) or continuous data (regression trees). They accommodate abrupt and non-monotonic relationships between the independent and dependent variables and make no assumptions concerning the statistical distribution of the data. Currently, bagged decision tree classifiers are the state of the practice approach for supervised satellite data classification (Doan and Foddy, 2007; Hansen et al., 2008). Bagging tree approaches use a statistical bootstrapping methodology to improve the predictive ability of the tree model and reduce over-fitting whereby a large number of trees are grown, each time using a different random subset of the training data, and keeping a certain percentage of data aside (Breiman, 1996).

### Sensitivity analysis of the GEMS soil organic carbon model

A. M. Dieye et al.

Title Page

Abstract

Introduction

Conclusions

References

Tables

Figures



Back

Close

Full Screen / Esc

Printer-friendly Version

Interactive Discussion



In this study, both hard and soft supervised classification approaches were undertaken. Classifications are described as “hard” when each pixel is classified into a single class category, i.e., full membership of a single class is assumed, and as “soft” when each pixel may have multiple partial class memberships (Foody, 2000).

5 Thirty bagged classification trees were generated, each time, 25% of the training data were used to generate a tree, and the remaining 75% were used to assess the classification accuracy. The 25% proportions were sampled at random with replacement. To limit overfitting, each tree was terminated using a deviance threshold: additional splits in the tree had to exceed 1% of the root node deviance or the tree growth  
10 was terminated. For each of the 30 trees, a soft classification result was generated defining for each 28.5 m Landsat pixel the probability of it belonging to each of the nine LCLU classes.

A hard decision tree classification was generated from the 30 soft classifications. Each soft classification was converted to a hard classification by assigning to each pixel  
15 the class with the highest probability, and then assigning the single most frequently occurring class category over the 30 classifications (Breiman, 1996; Bauer and Kohavi, 1999). When the maximum probability corresponded to more than one class, one of the classes was selected randomly. The number of unique classes that a pixel was independently classified in this way over the 30 trees was also recorded.

### 20 5.3 Classification accuracy assessment

The ensemble classification accuracy of the 30 soft decision tree classifications was quantified using a confusion matrix based statistical method. The confusion matrix is a two dimensional matrix composed of  $n$  columns and rows, where  $n$  is the number of  
25 classes, and each column represents the number of instances of a predicted (i.e. classified) class and each row represents the number of instances of an actual true class (Congalton et al., 1983). The diagonal of the confusion matrix records the agreement between the “classified” and the corresponding “truth”. The off-diagonal records the disagreement. Conventional confusion matrix accuracy assessment approaches are

---

## Sensitivity analysis of the GEMS soil organic carbon model

A. M. Dieye et al.

---

Title Page

Abstract

Introduction

Conclusions

References

Tables

Figures



Back

Close

Full Screen / Esc

Printer-friendly Version

Interactive Discussion



inappropriate for application to soft classification results (Foody, 2000). Consequently a “soft-to-hard” confusion matrix generation methodology was developed following the method of Doan and Foody (2007).

Recall that each of the 30 classification trees was generated from 25 % of the training data sampled at random with replacement. In the accuracy assessment, first each classification tree was used to classify the remaining (“out-of-bag”) 75 % of the training data, deriving a vector of class probabilities for each out-of-bag pixel (Breiman, 1996). Then a single confusion matrix was generated from the 30 vectors of class probabilities. Throughout the 30 vectors of probabilities, each pixel was assigned to the LCLU class with the maximum probability. If several classes had the same probabilities then one class was selected at random.

Conventional accuracy statistics were then derived from the “soft-to-hard” confusion matrix. The percent correct, was calculated by dividing the total number of pixels correctly classified by the total number of pixels in the training data. The Kappa coefficient was also calculated as it provides another measure of overall classification accuracy, but that uses all the elements of the confusion matrix to compensate for chance agreement, although kappa values may be biased in areas with uneven proportions of the different classes (Stehman, 1997, 2004; Foody, 2004). The producer’s and the user’s accuracies were computed to assess the accuracies of each class (Foody, 2002). The user’s accuracy was calculated by dividing the number of all correctly classified pixels of a class by the sum of all pixels which had been assigned to that class; it indicates the probability that a pixel classified to a given class actually represents the reality on the ground (Congalton, 1991). The producer’s accuracy was calculated by dividing the number of all correctly classified training pixels of a class by the sum of training data pixels for that class; it indicates the probability of a training pixel being correctly classified (Congalton, 1991).

**Sensitivity analysis  
of the GEMS soil  
organic carbon  
model**

A. M. Dieye et al.

Title Page

Abstract

Introduction

Conclusions

References

Tables

Figures



Back

Close

Full Screen / Esc

Printer-friendly Version

Interactive Discussion





## 6 Carbon modelling and sensitivity analysis methodology

### 6.1 Carbon modelling

The GEMS model was used to estimate soil organic carbon SOC ( $\text{gC m}^{-2}$ ) in the top 0–20 cm soil layer and also above ground net primary productivity (NPP) ( $\text{gC m}^{-2} \text{ yr}$ ). In this study we assumed that human disturbances in the study area were negligible before 1900 and that consequently carbon stocks and fluxes were at near equilibrium conditions in 1900. This is primarily justified since colonial impacts on Senegalese land use practices in the early colonial period were limited to small urban settlements and non-subsistence arable practices had largely not been developed (Gellar, 1976; Tschakert et al., 2004). Estimates of carbon stocks and fluxes in the study area in 1900 were obtained by running the model for 1500 years to a 1900 equilibrium (Liu et al., 2004; Tan et al., 2009) using the potential vegetation map, the 1960–1996 climate data, and the contemporary soil and drainage data described in Sect. 4.

The model was run from 1900 to 2000 using the 1900 carbon estimates to initialise the post-1900 model runs. The land cover of the study area was characterized in 1900 by the potential natural vegetation map and in 2000 was characterized by the Landsat classifications. The historical trajectory of land cover and land management between 1900 and 2000 is unknown, and so we assumed a linear change as a best estimate and following the approach used by other researchers (Liu et al., 2004, 2008 and Tan et al., 2009).

The GEMS model was run from 2000 to 2052 for the three climate change scenarios described in Sect. 4.2.2. The GEMS model was run independently parameterizing the 2000 land cover land use and associated land management parameterization (Table 1) from the 30 Landsat soft classifications and the single hard Landsat classification derived from the 30 soft classifications. These 31 runs were each repeated for the no, low, and high climate change scenarios.

We assumed there was no LCLU change after 2000 in order to assess only the sensitivity of the GEMS model outputs to the LCLU classification uncertainties under the

**BGD**

8, 6589–6635, 2011

### Sensitivity analysis of the GEMS soil organic carbon model

A. M. Dieye et al.

Title Page

Abstract

Introduction

Conclusions

References

Tables

Figures

⏪

⏩

◀

▶

Back

Close

Full Screen / Esc

Printer-friendly Version

Interactive Discussion



different climate scenarios. Moreover, prediction of future LCLU is difficult, not least because even if appropriate statistical LCLU change trend data existed, it may not capture future changes in LCLU driving forces, such as economic and policy modifications, acting at varying scales (Moss et al., 2010). Further, as LCLU in the study region is extensively soil moisture limited, future LCLU scenarios can only be meaningfully developed when coupled with future climate scenarios. This will be examined in future research that is not described here.

## 6.2 Soil Organic Carbon assessment and sensitivity analysis

Soil organic carbon (SOC) assessment and sensitivity analyses were performed to explore the variability imposed by the different land cover classification approaches for the three different climate scenarios. For the hard Landsat classification, where each 28.5 m Landsat pixel is assigned to only one LCLU class, the SOC for each pixel and simulation year and climate scenario was defined as:

$$SOC_{\text{year,scenario}}(i,j) = C_{\text{year,scenario,class}}(i,j) \quad (5)$$

where  $SOC_{\text{year,scenario}}(i,j)$  is the SOC estimated at pixel column and row  $(i,j)$  and  $C_{\text{year,scenario,class}}(i,j)$  is the GEMS modeled SOC at that pixel assuming that the pixel is entirely LCLU class  $class$ . The net primary productivity (NPP) was similarly derived for each hard classification pixel so that the GEMS NPP could be compared to the SOC data to ensure the estimates were plausible and spatially coherent.

For each soft classification, where the probability of class membership is stored at each pixel, the SOC for each pixel was defined as:

$$SOC_{\text{year,scenario}}(i,j) = \sum_{\text{class}=1}^n C_{\text{year,scenario,class}}(i,j) P_{2000,\text{class}} \quad (6)$$

$$\sum_{\text{class}=1}^n P_{2000,\text{class}} = 1$$

## Sensitivity analysis of the GEMS soil organic carbon model

A. M. Dieye et al.

Title Page

Abstract

Introduction

Conclusions

References

Tables

Figures

⏪

⏩

◀

▶

Back

Close

Full Screen / Esc

Printer-friendly Version

Interactive Discussion



where  $SOC_{year,scenario}(i,j)$  is the SOC estimated at pixel column and row  $(i,j)$ ,  $C_{year,class}(i,j)$  is the GEMS modeled SOC for that pixel assuming all the pixel is entirely class  $class$ , and  $P_{2000,class}$  is the soft classification probability of the pixel belonging to class  $class$ .

## 7 Results

### 7.1 LCLU classification scheme and classification accuracy Assessment

Table 3 shows the “soft-to-hard” confusion matrix results for the 9 LCLU classes. The classification accuracies tabulated in Table 3 provide an assessment of the ensemble classification accuracy of the 30 soft decision tree classifications and so also indicate the hard classification accuracy as it is derived from the 30 soft classifications. The percent correct and Kappa were 97.79 % and 0.98 respectively. The producer’s and user’s classification accuracies were greater than 90 % for all the classes except for the wetlands, irrigated agriculture and mangrove classes. No class was misclassified as another by a significant amount – the greatest misclassification was 0.19 % between the rainfed agriculture and savanna grassland classes. These classification accuracies are high and reflect what we expect is the best classification typically achievable for the study area.

Figure 1 shows the hard decision tree classification where each pixel is classified as one of the 9 LCLU classes. The classification indicates that in the study area, the dominant land cover is savanna grassland (61.5 % of the area), followed by rainfed agriculture (20.58 %), and then mud flats (5.67 %), wetlands (4.92 %), irrigated agriculture (3.25 %), water (2.93 %), plantation forest (0.70 %), bare soil (0.44 %), and mangrove (0.01 %).

The hard classification was defined from the 30 soft classifications, assigning at each pixel the single most frequently occurring class category over the 30 classifications using a voting procedure. Pixels where all 30 soft classifications agreed are more likely

**BGD**

8, 6589–6635, 2011

## Sensitivity analysis of the GEMS soil organic carbon model

A. M. Dieye et al.

Title Page

Abstract

Introduction

Conclusions

References

Tables

Figures

⏪

⏩

◀

▶

Back

Close

Full Screen / Esc

Printer-friendly Version

Interactive Discussion



to be reliable than those where there was disagreement. Figure 2 shows the number of unique classes (maximum 9) that a pixel was independently classified as over the 30 decision tree classifications. Approximately 82 % of the pixels were classified into no more than 2 classes with 55 % classified as one class and 27 % as two classes. The least reliable areas, classified into 3 classes or more, occurred predominantly in areas classified as wetlands, mud flats, bare soil, irrigated agriculture, and mangroves; these classes also had the lowest producer's and user's accuracies (Table 3). Varying water levels present in all of these cover types may confound their discrimination, which is not unexpected when passive optical wavelength satellite data are classified (Ozesmi and Bauer, 2002). In addition, the peanut basin agricultural expansion zone in the South West of the study area, composed of a mix of savanna and rainfed agriculture, was less reliably classified. This is most likely because of the presence of abandoned rainfed agricultural fields in this region that are used for intermittent grazing and can physically resemble grassland (Tappan et al., 2004; Tschakert et al., 2004).

## 7.2 Year 2000 carbon assessment and land cover classification sensitivity analysis

### 7.2.1 Hard decision tree classification SOC and NPP model results

Figures 3 and 4 illustrate year 2000 GEMS SOC in the top 0–20 cm soil layer and the above ground NPP respectively. The data were estimated as Eq. (5) using the 9 LCLU class hard Landsat classification illustrated in Fig. 1 and using the corresponding spatially explicit GEMS model inputs for the 9 classes under the no climate change scenario. Some spatial discontinuities are evident and are due to changes in certain GEMS input data, including the soil and climate data that are defined at coarser spatial resolutions than the 28.5 m Landsat pixel dimensions.

Table 4 summarizes the mean SOC and NPP for the 9 LCLU classes defined by the hard decision tree classification. The mean class SOC values range from 480.2 gC m<sup>2</sup> (Bare soil) to 1487.5 gC m<sup>2</sup> (Irrigated agriculture) with a mean study area SOC of

## Sensitivity analysis of the GEMS soil organic carbon model

A. M. Dieye et al.

Title Page

Abstract

Introduction

Conclusions

References

Tables

Figures

⏪

⏩

◀

▶

Back

Close

Full Screen / Esc

Printer-friendly Version

Interactive Discussion



1219.3 gC m<sup>2</sup> or 12.193 MgC ha which is in general agreement with other worker's Senegalese estimates (Touré, 2002; Manlay et al., 2002; Touré et al., 2003; CSE, 2004). Owing to the spatial differences in GEMS input data, within a given LCLU class, SOC values vary considerably. Thus, for Bare soil, SOC values range from a minimum of 358 to a maximum of 1491 gC m<sup>2</sup>; while for Irrigated agriculture they range from 417 to 4138 gC m<sup>2</sup>. In general, higher SOC values (Fig. 3) occur where NPP is higher (Fig. 4). The mean study area NPP is 185.1 gC m<sup>2</sup>/yr, which is in agreement with the results of Parton et al. (2004) who estimated NPP values up to 200 gC m<sup>2</sup>/yr in this region using the CENTURY model and coarser 10 km resolution input data. Similar differences of NPP values are also noted within LCLU classes.

## 7.2.2 Soft decision tree classification SOC results

There is insufficient space to illustrate the GEMS SOC derived as Eq. (6) for each of the 30 soft decision tree classifications for the year 2000. The mean of the 30 soft decision tree SOC estimates has a similar spatial pattern as the hard decision tree SOC illustrated in Fig. 3. Table 5 tabulates summary statistics of the 30 soft decision tree SOC estimates. Over the study area the mean SOC is 1217.4 gC m<sup>2</sup> and is very similar to the 1219.3 gC m<sup>2</sup> value estimated using the hard classification SOC (Table 4). For each class there is considerable variation between the minimum and maximum mean SOC statistics. For example, the irrigated agriculture class has mean SOC varying the most of all the classes from a minimum mean SOC of 457.9 gC m<sup>2</sup> to a maximum mean SOC of 4138.0 gC m<sup>2</sup>. This is explained in Sect. 7.2.3. The class mean SOC values in Table 5 are similar to the hard SOC classification equivalents tabulated in Table 4. For all classes the difference in the mean SOC between the 30 soft and the hard classification SOC results is less than 4%, except for mud flats (31%), bare soil (22%) and irrigated agriculture (8%), which were the most inconsistently classified over the 30 soft classification trees (Fig. 2).

**BGD**

8, 6589–6635, 2011

## Sensitivity analysis of the GEMS soil organic carbon model

A. M. Dieye et al.

Title Page

Abstract

Introduction

Conclusions

References

Tables

Figures

⏪

⏩

◀

▶

Back

Close

Full Screen / Esc

Printer-friendly Version

Interactive Discussion

### 7.2.3 SOC sensitivity to land cover classification

The SOC varies between the 30 SOC soft decision tree classification estimates due to differences both in the LCLU classifications and to spatial differences in the GEMS model inputs. The 30 soft LCLU classifications are different because of differences in the training data sampling which causes differences in the LCLU class membership probabilities for each soft decision tree classification. In addition, the modeled SOC for a given class can vary significantly from one location to another as a function of the GEMS model inputs (soil, climate, land management etc). For this reason the sensitivity of the GEMS SOC model is dependent not only on the LCLU classification errors and the degree of generalization of the landscape into the LCLU classes, but also on where the classes occur relative to the other GEMS model inputs.

To examine this sensitivity in more detail, Fig. 5 shows a map of the coefficient of variation (the standard deviation divided by the mean) of the 30 SOC soft decision tree classification estimates. The coefficient of variation, instead of the standard deviation, is used as it enables meaningful comparison between pixels that have markedly different mean SOC values. The SOC coefficient of variation varies from less than 0.15, for the majority of the study area, to more than 0.60. The highest SOC coefficient of variation values occur for the less accurately classified classes described in Sect. 7.1 and summarized in Table 3, i.e., for the bare soil, mud flats, wetland and rainfed agriculture classes situated along the coast and in the northwest. In addition, higher SOC coefficient of variation values occur in the peanut basin agricultural expansion zone in the south west where the hard classification “reliability” results illustrated in Fig. 2 shows several classes per pixel. This is most likely because abandoned rainfed agricultural fields in this region are used for intermittent grazing and can physically resemble other LCLU classes such as savanna grassland (Tappan et al., 2004).

Figure 6 shows histograms of the SOC coefficient of variation values for each land cover land use class defined by the hard decision tree classification (Fig. 1). The less accurately classified classes, i.e., bare soil, mud flats, wetland and rainfed agriculture,

**BGD**

8, 6589–6635, 2011

## Sensitivity analysis of the GEMS soil organic carbon model

A. M. Dieye et al.

Title Page

Abstract

Introduction

Conclusions

References

Tables

Figures



Back

Close

Full Screen / Esc

Printer-friendly Version

Interactive Discussion



have more widely distributed SOC coefficient of variation values with more than 20 % of their pixels with SOC coefficient of variation values greater than 0.1. The results shown in Figs. 5 and 6 illustrate that satellite classification uncertainties impact the GEMS model results not insignificantly. Similar SOC coefficient of variation histograms were observed for the SOC modeled under the low and high climate change scenarios.

### 7.3 1900 to 2052 carbon assessment and land cover sensitivity analysis under different climate change scenarios

Figure 7 shows the mean SOC averaged over all the classified pixels in the study area for the no climate change scenario plotted every 4 years from 1900 to 2052. The open circles show the mean SOC from simulation using the 30 independent decision tree soft classifications; the orange filled circles show the mean of the 30 simulations. The green filled circles show the mean SOC derived from the hard decision tree classification carbon assignment approach. It is evident that from 1900 to 2000 the SOC is generally decreasing, by about 32 % from approximately 1800 gC m<sup>2</sup> to approximately 1220 gC m<sup>2</sup>, this is due to human land cover land use, with some perturbations in this trend due to the growth and decay of the modelled vegetation.

Figure 8a–c show the mean SOC computed over all the classified pixels in the study area for the no, low, and high climate change scenarios plotted from 2000 to 2052. The SOC is estimated to decline from 2000 to 2052 under all climate change scenarios by approximately 11 %, 14 %, and 24 %, for the no (Fig. 8a), low (Fig. 8b), and high (Fig. 8c) climate change scenarios respectively. This trend has been observed elsewhere in West African drylands when temperature increases and precipitation decreases (Tan et al., 2009; Liu et al., 2004; Touré, 2002; Batjes, 2001). Summary statistics of the mean study area SOC results illustrated in these figures are tabulated in Table 6. These results reflect the spatial variability and uncertainty imposed by the different 2000 Landsat classifications and the spatio-temporal sensitivity of the GEMS model to that variability.

## Sensitivity analysis of the GEMS soil organic carbon model

A. M. Dieye et al.

Title Page

Abstract

Introduction

Conclusions

References

Tables

Figures



Back

Close

Full Screen / Esc

Printer-friendly Version

Interactive Discussion



For all three climate scenarios, and for each simulation year, the mean study area SOC obtained running GEMS with the hard decision tree classification (green filled circles), is similar (within  $4 \text{ gC m}^{-2}$ ) to the means of the 30 soft decision tree classification model results (orange filled circles) (Figs. 7 and 8). This is not unexpected as the hard decision tree classification is generated by applying a voting procedure to the 30 soft classification trees and demonstrates that the hard decision tree classification approach does provide a representative single mean study area SOC estimate.

The mean study area SOC for individual soft classifications varies for each simulation due to their different training data sampling which causes differences in the LCLU class membership probabilities and due to spatial differences in the GEMS model inputs as discussed in Sect. 7.2.3. In 2000, for the no climate change scenario, the mean study area SOC values vary over the 30 soft decision tree classifications from  $1196.6$  to  $1228.8 \text{ gC m}^{-2}$  (Fig. 8a, Table 6). This  $32.2 \text{ gC m}^{-2}$  SOC range corresponds to a variation of  $2.6\%$  of the mean study area hard decision tree classification SOC. This variation decreases in time to  $26.7 \text{ gC m}^{-2}$  in 2052, equivalent to  $2.5\%$  of the mean study area hard classification SOC, and similarly it decreases to  $31.4 \text{ gC m}^{-2}$  ( $3\%$ ) and  $29.9 \text{ gC m}^{-2}$  ( $3.2\%$ ) for the low (Fig. 8b, Table 6) and high (Fig. 8c, Table 6) climate change scenarios. These results imply that using a state of the practice hard decision tree classification approach with a 9 class LCLU classification scheme imposes a variability of a maximum of  $3.2\%$  of the mean study area SOC.

## 8 Conclusions

Research has attested to the significance of land cover and land use (LCLU) change on carbon dynamics (Scholes and Hall, 1996; Houghton et al., 1999; Lal, 2004; Tieszen, 2004) and on the utility of biogeochemical models to simulate soil and carbon biomass under different land management (Metherell et al., 1993; Batjes, 2001; Liu et al., 2004; Tschakert et al., 2004). However, differences between LCLU data sources and classification approaches, and errors in the LCLU data both in terms of classification errors

**BGD**

8, 6589–6635, 2011

### Sensitivity analysis of the GEMS soil organic carbon model

A. M. Dieye et al.

Title Page

Abstract

Introduction

Conclusions

References

Tables

Figures

⏪

⏩

◀

▶

Back

Close

Full Screen / Esc

Printer-friendly Version

Interactive Discussion





## Sensitivity analysis of the GEMS soil organic carbon model

A. M. Dieye et al.

Title Page

Abstract

Introduction

Conclusions

References

Tables

Figures

⏪

⏩

◀

▶

Back

Close

Full Screen / Esc

Printer-friendly Version

Interactive Discussion



and the degree of generalization of the landscape into the LCLU classes, may influence model outputs. Despite this, relatively few studies have examined this issue. In this study, state of the practice bagged decision tree approaches for LCLU classification of dry and wet season Landsat satellite data were used to assess the sensitivity of SOC estimated using the spatially explicit Global Ensemble Biogeochemical Modeling System (GEMS) under different climate scenarios. The study was undertaken in northern Senegal, where satellite LCLU classification is particularly challenging because of the semi-arid landscape, and where the coupling between future LCLU and climate change is poorly understood.

The primary GEMS model input variables were Landsat LCLU classification maps, used to parameterize the GEMS for land cover type and arable and non-arable Senegalese management practices, and spatially explicit soil and monthly precipitation and temperature data. The model outputs analysed were the soil organic carbon (SOC) in the top 0–20 cm soil layer and the above ground Net Primary Productivity (NPP). Thirty soft decision tree Landsat classifications and a single hard decision tree classification derived from the 30 soft classifications were used as independent inputs to the GEMS model. A 9 land cover land use (LCLU) classification scheme (composed of plantation forest, water, bare soil, mud flats, wetlands, mangrove, rainfed agriculture, irrigated agriculture, and savanna grassland classes) was used. This classification scheme and the bagged decision tree classification approach applied to a dry and wet season Landsat acquisition provided a high classification accuracy (Kappa 0.98; percent correct 97.8 %) that reflects what we expect is the best Landsat classification typically achievable.

Using the decision tree classification results the 2000 mean study area SOC and the above ground NPP were about 1220 gC m<sup>2</sup> and 185 gC m<sup>2</sup> yr<sup>-1</sup> respectively, which is in general agreement with other study results generated using less refined modeling approaches. The GEMS was run to a 1900 equilibrium using potential vegetation and long term climate averages, and then run from 1900 to 2000 which revealed a decreasing mean study area SOC of 32 % reflecting the impact of human disturbance

on carbon dynamics. The model was then run from 2000 to 2052 for different climate change scenarios which revealed mean study area SOC declines from 2000 to 2052 by 11 %, 14 %, and 24 % for the no, low, and high climate change scenarios respectively.

This research provides a new method to estimate the variability of SOC due to satellite LCLU classification errors. The single hard decision tree Landsat classification results, generated by applying a voting procedure to the 30 soft decision tree results, typically provided mean study area SOC values within about  $4 \text{ gC m}^2$  of the mean of the 30 soft decision tree classification results. This is not unexpected, and demonstrates that hard decision tree classification provides an appropriate approach to define a single classification appropriate for GEMS modeling. The 30 SOC maps estimated independently using the 30 different soft classifications provide data that were used to quantify the variability of SOC imposed by satellite classification errors.

At the study area scale, considering the mean study area SOC, the variability of SOC imposed by satellite classification errors was not high. In 2000 the mean study area SOC values varied over the 30 soft decision tree classifications by  $32.2 \text{ gC m}^2$  and corresponded to 2.6 % of the mean study area hard decision tree classification SOC. In 2052 this relative SOC variation was 2.5 %, 3 % and 3.2 % for the no, low and high climate change scenarios respectively. These variations are much less than the corresponding 11 %, 14 % and 24 % declines from 2000 to 2053 in mean study area SOC modeled for the no, low and high climate change scenarios respectively.

At local, pixel, scale the impacts of satellite classification errors can be very apparent. The per-pixel coefficient of variation (the standard deviation divided by the mean) of the 30 SOC soft decision tree estimates was used to quantify the pixel-level spatial variability of SOC imposed by satellite classification errors. The highest coefficient of variations occurred for the least accurately classified classes and were not negligible. In this study, more than 20 % of the bare soil, mud flat, wetland and rainfed agriculture pixels had SOC coefficient of variation values greater than 0.1 with some as great as nearly 0.6. These high local-scale SOC variations are due to differences in the satellite classification training data sampling, which causes differences in the mapped LCLU

**BGD**

8, 6589–6635, 2011

## Sensitivity analysis of the GEMS soil organic carbon model

A. M. Dieye et al.

Title Page

Abstract

Introduction

Conclusions

References

Tables

Figures

⏪

⏩

◀

▶

Back

Close

Full Screen / Esc

Printer-friendly Version

Interactive Discussion

class membership probabilities, and due to the interaction of these differences with spatial differences in the other GEMS model inputs.

The findings of this study indicate that the high local variability of SOC due to satellite classification errors should be taken into consideration, for example, using the method described here. This is particularly important as local-scale SOC variations imposed by satellite classification errors may obscure modeled temporal changes in SOC due to climate influences that may be highly land cover specific.

*Acknowledgements.* This research was funded by NASA grant NNX07A052H. The USAID through the USGS EROS Data Center is acknowledged for partial support of the initial stages of this work.

## References

- Anderson, J. R., Hardy, E. E., Roach, J. T., and Witmer, R. E.: A Land Use and Land Cover Classification System for Use with Remote Sensor Data, Geological Survey Professional Paper 964, United States Government Printing Office, 1976.
- Arvidson, T., Gasch, J., and Goward, S. N.: Landsat 7's long-term acquisition plan t an innovative approach to building a global imagery archive, *Remote Sens. Environ.*, 78, 13–26, 2001.
- Barnsley, M. and Barr, S.: A graph-based structural pattern recognition system to infer land use from fine spatial resolution land cover data, *Computers, Environ. Urban Syst.*, 21, 209–225, 1997.
- Batjes, N. H.: Options for increasing carbon sequestration in West African soils: an exploratory study with special focus on Senegal, *Land Degrad. Dev.*, 12, 131–142, 2001.
- Bauer, E. and Kohavi, R.: An Empirical Comparison of Voting Classification Algorithms: Bagging, Voting, and Variants, *Mach. Learn.*, 36, 105–142, 1999.
- Breiman, L.: Bagging Predictors, *Mach. Learn.*, 24, 123–140, 1996.
- Breiman, L., Friedman, J. H., Olshen, R., and Stone, C. J.: *Classification and Regression Trees*, Wadworth, Belmont, 1984.
- Brooks, N.: Drought in the African Sahel: Long term perspectives and future prospects, Tyndall Cent. Working Pap., 61, University of East Anglia, Norwich, UK, 2004.

## Sensitivity analysis of the GEMS soil organic carbon model

A. M. Dieye et al.

Title Page

Abstract

Introduction

Conclusions

References

Tables

Figures



Back

Close

Full Screen / Esc

Printer-friendly Version

Interactive Discussion



## Sensitivity analysis of the GEMS soil organic carbon model

A. M. Dieye et al.

Title Page

Abstract

Introduction

Conclusions

References

Tables

Figures

⏪

⏩

◀

▶

Back

Close

Full Screen / Esc

Printer-friendly Version

Interactive Discussion



- Brown, S.: Estimating biomass and biomass change of tropical forests, FAO Forestry Paper 134, A forest resources assessment publication, Rome, 1997.
- Challinor, A., Wheeler, T., Garforth, C., Craufurd, P., and Kassam, A.: Assessing the vulnerability of food crop systems in Africa to climate change, *Climatic Change*, 83, 381–399, 2007.
- 5 Chavez Jr., P. S.: Image-based atmospheric correction - Revisited and improved, *Photogramm. Eng. Rem. S.*, 62(9), 1025–1036, 1996.
- Christensen, J. H., Hewitson, B., Busuioc, A., Chen, A., Gao, X., Held, I., Jones, R., Kolli, R. K., Kwon, W.-T., Laprise, R., Magana Rueda, V., Mearns, L., Menendez, C. G., Raisanen, J., Rinke, A., Sarr, A., and Whetton, P.: Regional climate projections, in: *Climate Change 2007: the physical science basis*, edited by: Solomon, S., Qin, D., Manning, M., Chen, Z., Marquis, M., Averyt, K. B., Tignor, M., Miller, H. L., Contribution of Working Group I to the Fourth Assessment Report of the Intergovernmental Panel on Climate Change, Cambridge University Press, Cambridge, UK, 847–940, 2007.
- 10 Congalton, R. G., Oderwald, R. G., and Mead, R. A.: Assessing Landsat classification accuracy using discrete multivariate analysis statistical techniques, *Photogramm. Eng. Rem.S.*, 49, 1671–1678, 1983.
- Congalton, R. G.: A review of assessing the accuracy of classifications of remotely sensed data, *Remote Sens. Environ.*, 37, 35–46, 1991.
- Coppin, P., Jonckheere, I., Nackaerts, K., Muys, B., and Lambin, E.: Digital change detection methods in ecosystem monitoring: A review, *Inter. J. Remote Sens.*, 25, 1565–1596, 2004.
- 20 CSE: Annuaire sur l'Environnement et les Ressources Naturelles du Sénégal. Ministère de l'Environnement du Sénégal, Centre de Suivi Ecologique, Sénégal. 125 pp., 2002.
- CSE: Inventaire des mesures de sol et de biomasse effectuées dans différentes parties du Sénégal ces 20 dernières années, Document interne en format Excel, Centre de Suivi Ecologique, Sénégal, 2004.
- 25 CSE: Cartographie multi-date des zones humides du Sénégal. Etude commanditée par UICN (Union Mondiale Pour La Nature) et RENZOH (Réseau National des Zones Humides du Sénégal). Rapport final avec cartes annexées, 25p, Centre de Suivi Ecologique, Sénégal, 25 pp., 2005.
- 30 DeFries, R. S., Field, C. B., Fung, I., Collatz, G. J., and Bounoua, L.: Combining satellite data and biogeochemical models to estimate global effects of human-induced land cover change on carbon emissions and primary productivity, *Global Biogeochem. Cy.*, 13, 803–815, 1999.
- Doan, H. T. X. and Foody, G. M.: Increasing soft classification accuracy through the use of an

---

## Sensitivity analysis of the GEMS soil organic carbon model

---

A. M. Dieye et al.

[Title Page](#)[Abstract](#)[Introduction](#)[Conclusions](#)[References](#)[Tables](#)[Figures](#)[⏪](#)[⏩](#)[◀](#)[▶](#)[Back](#)[Close](#)[Full Screen / Esc](#)[Printer-friendly Version](#)[Interactive Discussion](#)

ensemble of classifiers, *Inter. J. Remote Sens.*, 28(20), 4609–4623, 2007.

Fall, S., Niyogi, D., and Semazzi, F. H. M.: Analysis of Mean Climate Conditions in Senegal (1971–98), *Earth Interactions*, 10(5), 1–40, 2006.

5 Foody, G.: Estimation of sub-pixel land cover composition in the presence of untrained classes, *Computer & Geosciences*, 26, 469–478, 2000.

Foody, G.: Status of land cover classification accuracy assessment, *Remote Sens. Environ.*, 80, 185–201, 2002.

Foody, G.: Thematic Map Comparison: Evaluating the Statistical Significance of Differences in Classification Accuracy, *Photogramm. Eng. Remote Sens.*, 70(5), 627–633, 2004.

10 Foody, G. M., Mathur, A., Sanchez-Hernandez, C., and Boyd, D. S.: Training set size requirements for the classification of a specific class, *Remote Sens. Environ.*, 104, 1–14, 2006.

Frederiksen, P. and Lawesson, J. E.: Vegetation types and patterns in Senegal based on multivariate analysis of field and NOAA-AVHRR satellite data, *J. Veg. Sci.*, 3, 535–544, 1992.

15 Gellar, S.: *Structural Changes and Colonial Dependency: Senegal, 1885–1945*. Sage: London, 80 pp., 1976.

Gutman, G., Byrnes, R., Masek, J., Covington, S., Justice, C., Franks, S., and Kurtz, R.: Towards monitoring land-cover and land-use changes at a global scale: The Global Land Survey 2005, *Photogramm. Eng. Remote Sens.*, 74, 6–10, 2008.

20 Hansen, M. C., Roy, D. P., Lindquist, E., Adusei, B., Justice, C. O., and Altstaad, A.: A method for integrating MODIS and Landsat data for systematic monitoring of forest cover and change and preliminary results for Central Africa, *Remote Sens. Environ.*, 112, 2495–2513, 2008.

Hiernaux, P. H. Y. and Justice, C. O.: Suivi du développement végétal au cours de l'été 1984 dans le Sahel Malien, *Inter. J. Remote Sens.*, 7, 1515–1532, 1986.

25 Houghton, R. A., Hackler, J. L., and Lawrence, K. T.: The US carbon budget: contributions from land-use change, *Science*, 285, 574–578, 1999.

Hulme, M., Doherty, R., Ngara, T., New, M., and Lister, D.: African climate change: 1900–2100, *Clim. Res.*, 17, 145–168, 2001.

30 Hutchinson, M. F., Nix, H. A., McMahon, J. P., and Ord, K. D.: *Africa – A topographic and climatic database*, Center for Resource and Environmental Studies (CRES), Australian National University, Canberra, 1996.

IPCC: *Climate Change 2007: Impacts, Adaptation and Vulnerability*. in: *Contribution of Working Group II to the Fourth Assessment Report of the Intergovernmental Panel on Climate Change*, edited by: Parry, M. L., Canziani, O. F., Palutikof, J. P., van der Linden, P. J., and

## Sensitivity analysis of the GEMS soil organic carbon model

A. M. Dieye et al.

[Title Page](#)
[Abstract](#)
[Introduction](#)
[Conclusions](#)
[References](#)
[Tables](#)
[Figures](#)
[⏪](#)
[⏩](#)
[◀](#)
[▶](#)
[Back](#)
[Close](#)
[Full Screen / Esc](#)
[Printer-friendly Version](#)
[Interactive Discussion](#)

- Hanson, C. E., Cambridge University Press, Cambridge, UK, 976 pp., 2007.
- Kennedy, R. E., Turner, D. P., Cohen, W. B., and Guzy, M.: A method to efficiently apply a biogeochemical model to a landscape, *Landscape Ecol.*, 21, 213–224, 2006.
- Lal, R.: Soil carbon sequestration to mitigate climate change, *Geoderma*, 123(1–2), 1–21, 2004.
- Lambin, E. F. and Strahler, A.: Multitemporal change-vector analysis: A tool to detect and categorise land-cover change processes using high temporal resolution satellite data, *Remote Sens. Environ.*, 48, 231–244, 1994.
- Lambin, E. F. and Ehrlich, D.: Land-cover changes in sub-Saharan Africa (1982–1991): Application of a change index based on remotely-sensed surface temperature and vegetation indices at a continental scale, *Remote Sens. Environ.*, 61, 181–200, 1997.
- Liu, J., Liu, S., Loveland, T. R., and Tieszen, L. L.: Integrating Remotely Sensed Land Cover Observations and a Biogeochemical Model For Estimating Forest Ecosystem Carbon Dynamics, *Ecological Modeling*, 219, 361–372, 2008.
- Liu, S., Kaire, M., Wood, E., Diallo, O., and Tieszen, L. L.: Impacts of land use and climate change on carbon dynamics in south-central Senegal, *J. Arid Environ.*, 59, 583–604, 2004.
- Lo, T. H. C., Scarpace, F. L., and Lillesand, T. M.: Use of Multitemporal Spectral Profiles in Agricultural Land Cover Classification, *Photogramm. Eng. Remote Sens.*, 52(4), 535–544, 1986.
- Manlay, R. J., Masse, D., Chotte, J. L., Feller, C., Kairé, M., Fardoux, J., and Pontanier, R.: Carbon, nitrogen and phosphorus allocation in agro-ecosystems of a West African savanna II, The soil component under semi-permanent cultivation, *Agriculture Ecosystems and Environment*, 88, 233–248, 2002.
- Markham, B. L. and Barker, J. L.: Landsat MSS and TM post-calibration dynamic ranges, exoatmospheric reflectances and at-satellite temperatures, *EOSAT Technical Notes*, August, 1986.
- Metherell, A. K., Harding, L. A., Cole, C. V., and Parton, W. J.: CENTURY Soil organic matter model environment, Technical documentation, Agroecosystem version 4.0. Great Plains System Research Unit Technical Report No. 4, USDA-ARS, Fort Collins, Colorado, USA, 1993.
- Monod, T.: Nomenclature des formations végétales dans les régions arides et semi-arides. Réunion de spécialistes sur la phytogéographie, Yangambi 1956, Soc. C.C.T.A./C.S.A. Afrique 208, 304–319, 1956.

## Sensitivity analysis of the GEMS soil organic carbon model

A. M. Dieye et al.

Title Page

Abstract

Introduction

Conclusions

References

Tables

Figures

◀

▶

◀

▶

Back

Close

Full Screen / Esc

Printer-friendly Version

Interactive Discussion



- Moss, R. H., Edmonds, J. A., Hibbard, K. A., Manning, M. R., Rose, S. K., van Vuuren, D. P., Carter, T. M., Emori, S., Kainuma, M., Kram, T., Meehl, G. A., Mitchell, J. F. B., Nakicenovic, N., Riahi, N., Smith, S. J., Stouffer, R. J., Thomson, A. M., Weyant, J. P., and Wilbanks, T. J.: The next generation of scenarios for climate change research and assessment, *Nature*, 463, 747–756, 2010.
- Nkonya, E., Winslow, M., Reed, M. S., Mortimore, M., and Mirzabaev, A.: Monitoring and assessing the influence of social, economic and policy factors on sustainable land mangement in drylands, *Land Degrad. Dev.*, 22:240–247, 2011.
- Ouaidrari, H. and Vermote, E. F.: Operational atmospheric correction of Landsat TM data, *Remote Sens. Environ.*, 70, 4–15, 1999.
- Ozesmi, S. L. and Bauer, M. E.: Satellite remote sensing of wetlands, *Wetl. Ecol. Manag.*, 10, 381–402, 2002.
- Parton, W., Tappan, G., Ojima, D., and Tschakert, P.: Ecological impact of historical and future land-use patterns in Senegal, *J. Arid Environ.*, 59, 605–623, 2004.
- Pickup, G., Chewings, V. H., and Nelson, O. J.: Estimating changes in vegetation cover over time in arid rangelands using Landsat MSS data, *Remote Sens. Environ.*, 43, 243–263, 1993.
- Prince, S. D., Justice, C. O., and Los, S. O.: Remote Sensing of the Sahelian Environment, A review of the current status and future prospects, TCARC, Commission of the European Communities, 1990.
- Quaife, T., Quegan, S., Disney, M., Lewis, P., Lomas, M., and Woodward, F. I.: Impact of land cover uncertainties on estimates of biospheric carbon fluxes, *Global Biogeochem. Cy.*, 22, GB4016, doi:10.1029/2007GB003097, 2008.
- Reich, P., Turner, D., and Bolstad, P.: An approach to spatially-distributed modeling of net primary production (NPP) at the landscape scale and its application in validation of EOS NPP products, *Remote Sens. Environ.*, 70, 69–81, 1999.
- Roy, D. P., Ju, J., Kline, K., Scaramuzza, P. L., Kovalsky, V., Hansen, M. C., Loveland, T. R., Vermote, E. F., and Zhang, C.: Web-enabled Landsat Data (WELD): Landsat ETM+ Composited Mosaics of the Conterminous United States, *Remote Sens. Environ.*, 114, 35–49, 2010.
- Scholes, R. J. and Hall, D. O.: The carbon budget of tropical savannas, woodlands and grasslands, in: *Global Change: Effects on Coniferous Forests and Grasslands*, edited by: Breymer, A. I., Hall, D. O., Melillo, J. M., and Agren, G. I., SCOPE Volume 56, Wiley,

## Sensitivity analysis of the GEMS soil organic carbon model

A. M. Dieye et al.

Title Page

Abstract

Introduction

Conclusions

References

Tables

Figures

⏪

⏩

◀

▶

Back

Close

Full Screen / Esc

Printer-friendly Version

Interactive Discussion



Chichester, 69–100, 1996.

Schriever, J. R. and Congalton, R. J.: Mapping Forest Cover-Types in New Hampshire Using Multi-Temporal Landsat Thematic Mapper Data, ASPRS/ACSM Annual Convention & Exposition, 15–19 February (New Orleans, Louisiana), 3, 333–342, 1993.

5 Skole, K. and Tucker, C.: Tropical Deforestation and Habitat Fragmentation in the Amazon: Satellite Data from 1978 to 1988, *Science*, 260, 1905–1910, 1993.

Stancioff, A., Staljanssens, M., and Tappan, G.: Mapping and Remote Sensing of the Resources of the Republic of Senegal: A study of the geology, hydrology, soils, vegetation and land use potential, SDSU, Remote Sens. Inst., SDSU-RSI-86-01, 655 pp., 1986.

10 Stehman, S. V.: Selecting and interpreting measures of thematic classification accuracy, *Remote Sens. Environ.*, 62, 77–89, 1997.

Stehman, S. V.: A critical evaluation of the normalized error matrix in map accuracy assessment, *Photogramm. Eng. Remote Sens.*, 70(6), 743–751, 2004.

15 Sun, W., Heidt, V., Gong, P., and Xu, G.: Information fusion for rural land-use classification with high-resolution satellite imagery, *IEEE Transaction on Geoscience and Remote Sensing*, 41(4), 883–890, 2003.

Tan, Z., Tieszen, L. L., Tachie-Obeng, E., Liu, S., and Dieye, A. M.: Historical and simulated ecosystem carbon dynamics in Ghana: land use, management, and climate, *Biogeosciences*, 6, 45–58, doi:10.5194/bg-6-45-2009, 2009.

20 Tappan, G. G., Sall, M., and Cushing, M.: Ecoregions and land cover trends in Senegal, *J. Arid Environ.*, 59, 427–462, 2004.

Tieszen, L. L., Tappan, G. G., and Touré, A.: Sequestration of carbon in soil organic matter in Senegal: an overview, *J. Arid Environ.*, 59, 409–425, 2004.

25 Touré, A.: Contribution à l'étude de l'évolution des réservoirs de carbone en zone nord-soudanienne au Sénégal. Thèse EPFL, no 2585 (2002). Dir.: Jean-Claude Védý, Ecole Polytechnique Fédérale de Lausanne (EPFL), Suisse, 2002.

Touré, A., Rasmussen, K., Diallo, O., and Diouf, A.: Actual and potential carbon stocks in the north-sudanian zone. A case study: The forests of Delbi and Paniates in Senegal, *Danish Journal of Geography*, 103(1), 63–70, 2003.

30 Townshend, J. R. G. and Justice, C. O.: Selecting the spatial resolution of satellite sensors required for global monitoring of land transformations, *Inter. J. Remote Sens.*, 9, 187–236, 1988.

Trochain, J. L.: Accord interafricain sur la définition des types de végétation de l'Afrique tropi-



## Sensitivity analysis of the GEMS soil organic carbon model

A. M. Dieye et al.

Title Page

Abstract

Introduction

Conclusions

References

Tables

Figures

◀

▶

◀

▶

Back

Close

Full Screen / Esc

Printer-friendly Version

Interactive Discussion



- cale. Bulletin de l'Institut des Etudes Centrafricaines, Nouvelles séries 13–14, 55–93, 1957.
- Tschakert, P. and Tappan, G.: The social context of carbon sequestration: considerations from a multiple-scale environmental history of the Old Peanut Basin of Senegal, *J. Arid Environ.*, 59, 535–564, 2004.
- 5 Tucker, C. J., Townshend, J. R. G., and Goff, T. E.: African Land-Cover Classification Using Satellite Data, *Science*, 227, 369–375, 1985
- Tucker, C. J., Grant, D. M., and Dykstra, J. D.: NASA's Global Orthorectified Landsat Dataset, *Photogramm. Eng. Remote Sens.*, 70, 313–322, 2004.
- Turner, B. L. II: The Sustainability Principle in Global Agendas: Justifications for Understanding Land Use/Cover Change, *Geogr. J.*, 163, 133–140, 1997.
- 10 Turner, D. P., Cohen, W. B., and Kennedy, R. E.: Alternative spatial resolutions and estimation of carbon flux over a managed forest landscape in western Oregon, *Landscape Ecol.*, 15, 441–452, 2000.
- Woomer, P. L., Tieszen, L. L., Tappan, G., Touré, A., and Sall, M.: Land use change and terrestrial carbon stocks in Senegal, *J. Arid Environ.*, 59, 625–642, 2004a.
- 15 Woomer, P. L., Touré, A., and Sall, M.: Carbon stocks in Senegal's Sahel Transition Zone, *J. Arid Environ.*, 59, 499–510, 2004b.

## Sensitivity analysis of the GEMS soil organic carbon model

A. M. Dieye et al.

Title Page

Abstract

Introduction

Conclusions

References

Tables

Figures

⏪

⏩

◀

▶

Back

Close

Full Screen / Esc

Printer-friendly Version

Interactive Discussion



**Table 1.** Summary of management practices used for the GEMS model parameterization. The crop rotation probabilities should be read horizontally from time 1 to time 2; each row sums to 1.

Savanna					
Grazing	Moderate to high grazing intensity all year				
Fire	Once every year in February				
Agriculture					
Growing season	June to September				
Crop composition	Millet, sorghum, groundnuts				
Crop/fallow ratio (year)	(5–10)/(1–5)				
Tree removal	Clear cut				
Fertilizer	Low to moderate use of NPK fertilizer				
Cultivation	Cultivation with cultivator tool (hoe) in July–September				
Harvest	Harvest with 90 % straw removal in October				
Grazing	Winter grazing November–December				
Crop rotation probabilities	time 1/time 2	Fallow	Millet	Sorghum	Groundnuts
	Fallow	0.50	0.10	0.15	0.25
	Millet	0.02	0.45	0.00	0.53
	Sorghum	0.00	0.00	0.55	0.45
	Groundnuts	0.06	0.34	0.00	0.60

**Table 2.** Description of the 9 land cover land use (LCLU) classes and the number of training pixels used for the classification.

Code	LCLU class	Definition	Training pixels
1	Plantation Forest	Pine <i>Casuarina equisetifolia</i> plantation forest known only to occur in the Niayes coastal ecoregion.	113
2	Water	Permanent inland water (rivers, lakes); defined by visual interpretation of dry and wet season Landsat ETM+ data.	627
3	Bare Soil	Natural areas devoid of vegetation; defined by visual interpretation of dry and wet season Landsat ETM+ data.	280
4	Rainfed agriculture	Agricultural fields which crop development relies primarily on natural rainfall; defined by visual interpretation of dry and wet season Landsat ETM+ data and using contextual knowledge.	2.150
5	Wetlands	Areas inundated or saturated by surface or ground water in a permanent or temporary basis to support a prevalence of vegetation adapted for life in saturated conditions; defined after Yangambi classification.	922
6	Mangrove	Trees and shrubs that grow in saline coastal habitats; defined after Yangambi classification.	72
7	Mud flats	A mud area devoid of vegetation; seasonally inundated; defined by visual interpretation of dry and wet season Landsat ETM+ data.	149
8	Irrigated agriculture	Agricultural fields in proximity to the Senegal River and to artesian wells; defined by visual interpretation of dry and wet season Landsat ETM+ data and using contextual knowledge.	151
9	Savanna Grassland	Open savanna with annual grasses and scattered trees or shrubs (< 10% of cover); defined after Yangambi classification.	7.253
Total			11.717

**BGD**

8, 6589–6635, 2011

## Sensitivity analysis of the GEMS soil organic carbon model

A. M. Dieye et al.

Title Page

Abstract

Introduction

Conclusions

References

Tables

Figures

⏪

⏩

◀

▶

Back

Close

Full Screen / Esc

Printer-friendly Version

Interactive Discussion



## Sensitivity analysis of the GEMS soil organic carbon model

A. M. Dieye et al.

**Table 3.** Soft-to-hard confusion matrix results for the 9 land cover land use classes. The cell values report percentages of the total area; a total of 305 428 pixels were considered. The percent correct is 97.79% and Kappa-coefficient is 0.98. Grey fields, along the diagonal, represent for each class, the percentage correctly classified. The classes are: 1. Plantation; 2. Water; 3. Bare soil; 4. Rainfed agriculture; 5. Wetlands; 6. Mangrove; 7. Mud flats; 8. Irrigated agriculture; 9. Savanna grassland (Table 2).

True Class	Classification									Row Total	Producer's Accuracy
	1	2	3	4	5	6	7	8	9		
1	3.30	0.00	0.00	0.00	0.03	0.00	0.00	0.02	0.00	3.4	98.4%
2	0.00	13.94	0.00	0.00	0.03	0.00	0.00	0.00	0.00	14.0	99.8%
3	0.00	0.00	1.43	0.01	0.00	0.00	0.02	0.00	0.02	1.5	96.1%
4	0.00	0.00	0.02	6.54	0.00	0.00	0.01	0.00	0.14	6.7	97.4%
5	0.02	0.00	0.00	0.00	1.04	0.04	0.04	0.05	0.07	1.3	82.0%
6	0.01	0.00	0.00	0.00	0.05	0.03	0.00	0.01	0.00	0.1	35.1%
7	0.00	0.00	0.05	0.03	0.01	0.00	4.06	0.01	0.12	4.3	94.8%
8	0.02	0.00	0.00	0.00	0.06	0.01	0.02	1.00	0.04	1.2	86.7%
9	0.00	0.00	0.01	0.19	0.06	0.00	0.13	0.08	67.21	67.7	99.3%
Column Total	3.4	13.9	1.5	6.8	1.3	0.1	4.3	1.2	67.6	100	
User's Accuracy	98.4%	100.0%	94.1%	96.5%	81.9%	36.5%	94.7%	85.7%	99.4%		

Title Page

Abstract Introduction

Conclusions References

Tables Figures

◀ ▶

◀ ▶

Back Close

Full Screen / Esc

Printer-friendly Version

Interactive Discussion

## Sensitivity analysis of the GEMS soil organic carbon model

A. M. Dieye et al.

**Table 4.** Comparison of the minimum, mean and maximum SOC (Fig. 3) and NPP (Fig. 4) simulated for the 9 LCLU classes using the year 2000 hard classification (Fig. 1). Only pixels where SOC and NPP was modeled are considered (i.e., not water bodies, clouds, cloud shadows, settlement areas, or where there was no Landsat data).

LCLU class	SOC (gC m <sup>2</sup> )			NPP (gC m <sup>2</sup> /yr)		
	Min	Mean	Max	Min	Mean	Max
Plantation forest	452	1190.32	1525	0	162.55	756
Bare soil	358	480.22	1491	0	11.28	118
Rainfed agriculture	518	1441.5	2655	14	295.39	596
Wetlands	262	1094.6	2088	8	113.93	258
Mangrove	455	1010.11	1573	8	170.09	412
Mud flats	353	537.63	1537	0	45.36	149
Irrigated agriculture	417	1487.47	4138	0	200.99	720
Savanna	411	1212.44	1543	0	159.98	243
Over the study area	262	1219.3	4138	0	185.1	756

[Title Page](#)
[Abstract](#)
[Introduction](#)
[Conclusions](#)
[References](#)
[Tables](#)
[Figures](#)
[Back](#)
[Close](#)
[Full Screen / Esc](#)
[Printer-friendly Version](#)
[Interactive Discussion](#)

## Sensitivity analysis of the GEMS soil organic carbon model

A. M. Dieye et al.

**Table 5.** Summary statistics of the mean of the 30 soft decision tree SOC estimates for year 2000. The statistics are summarized with respect to the 9 LCLU classes defined by the hard decision tree classification (Fig. 1). The mean study area mean SOC is  $1217.4 \text{ gC m}^{-2}$ . Only pixels where SOC was modeled are considered (i.e., not water bodies, clouds, cloud shadows, settlement areas, or where there was no Landsat data).

LCLU class	Minimum Mean SOC ( $\text{gC m}^{-2}$ )	Mean Mean SOC ( $\text{gC m}^{-2}$ )	Maximum Mean SOC ( $\text{gC m}^{-2}$ )
Plantation forest	445.0	1203.26	1785.57
Bare soil	374.0	588.83	1491.0
Rainfed agriculture	474.6	1411.63	2655.0
Wetlands	150.0	1099.39	2278.73
Mangrove	439.0	979.5	1588.97
Mud flats	365.0	706.47	2207.17
Irrigated agriculture	457.93	1366.51	4138.0
Savanna	412.0	1211.9	2714.0
Over the study area	150.0	1217.4	4138.0

Title Page

Abstract

Introduction

Conclusions

References

Tables

Figures

◀

▶

◀

▶

Back

Close

Full Screen / Esc

Printer-friendly Version

Interactive Discussion

## Sensitivity analysis of the GEMS soil organic carbon model

A. M. Dieye et al.

**Table 6.** Summary statistics of the mean study area hard and soft decision tree (DT) soil organic carbon (SOC) ( $\text{gC m}^{-2}$ ) model estimates illustrated in Figs. 7 and 8, for the no, low, and high climate change scenarios, for selected years.

	Carbon dynamics 1900–2000				No climate change Scenario			Low climate change scenario			High climate change scenario		
	1900	1940	1980	2000	2020	2040	2052	2020	2040	2052	2020	2040	2052
Hard DT SOC	1803.3	1470.6	1282.5	1219.3	1138	1102.9	1080.7	1129.3	1082.2	1052.6	1104.8	1014	931.5
Mean of 30 soft DT SOC estimates	1803.3	1471.1	1283.3	1217.4	1135.4	1100.1	1077.7	1128	1080.5	1051.3	1103.2	1011	929.7
Minimum of 30 soft DT SOC estimates	1803.2	1465.3	1267.1	1196.6	1117.5	1083.1	1061.2	1108.8	1061.6	1032.8	1083.4	991.2	911.3
Maximum of 30 soft DT SOC estimates	1803.3	1474.2	1291.9	1228.8	1145.1	1109.9	1087.8	1139.8	1093.2	1064.2	1114.6	1023	941.2
Range of 30 soft DT SOC estimates and percent of mean (%)	0 (0.00)	8.9 (0.60)	24.7 (1.92)	32.2 (2.64)	27.5 (2.42)	26.8 (2.44)	26.7 (2.48)	31.1 (2.76)	31.7 (2.93)	31.4 (2.99)	31.2 (2.83)	31.6 (3.13)	29.9 (3.22)

Title Page

Abstract

Introduction

Conclusions

References

Tables

Figures

⏪

⏩

◀

▶

Back

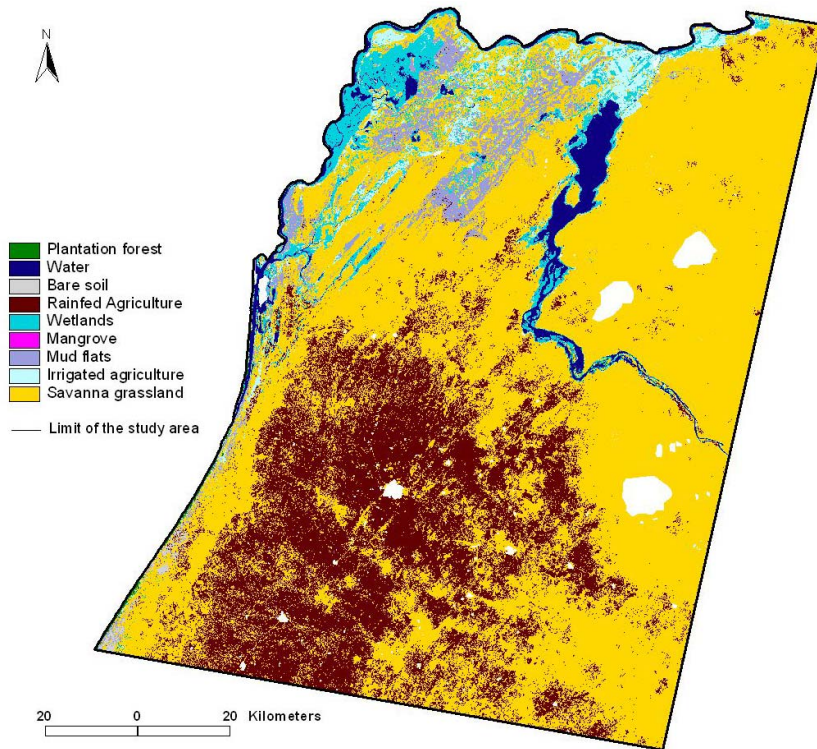
Close

Full Screen / Esc

Printer-friendly Version

Interactive Discussion





**Fig. 1.** Landsat 28.5m hard decision tree classification of the study area in north-western Senegal, covering 1560 km<sup>2</sup> lying 15°24'–17°00' W and 15°00'–16°42' N. Dry and wet season 2002 Landsat data were classified using a bagged decision tree classification procedure into 9 land cover land use classes (plantation forest, water, bare soil, rainfed agriculture, wetlands, mangrove, mud flats, irrigated agriculture, and savanna grassland). The study area is shown bounded by a black vector. White shows unclassified (clouds, cloud shadows, settlement areas, or no Landsat data).

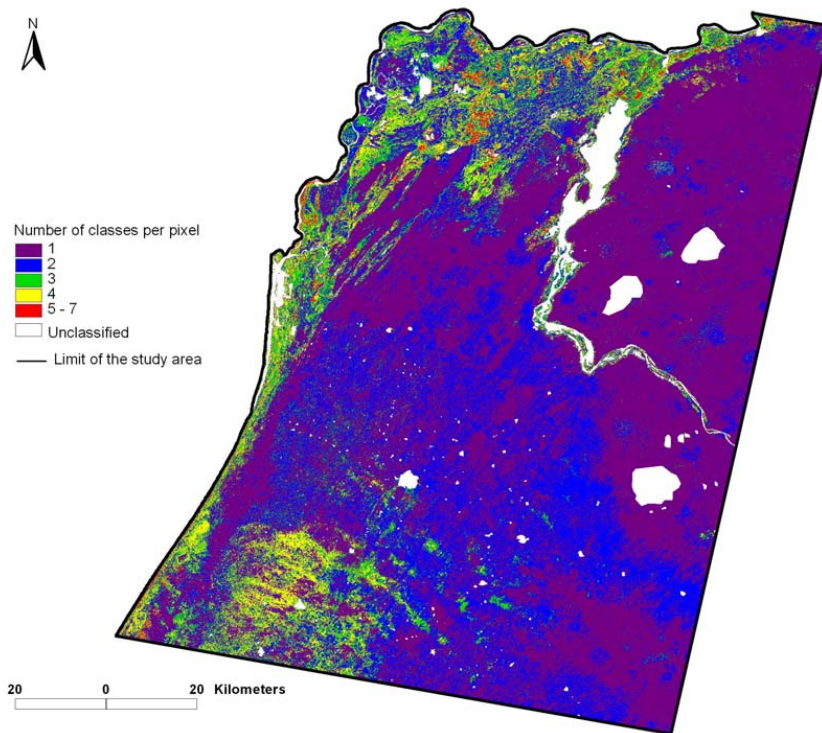
**Sensitivity analysis  
of the GEMS soil  
organic carbon  
model**

A. M. Dieye et al.

Title Page	
Abstract	Introduction
Conclusions	References
Tables	Figures
◀	▶
◀	▶
Back	Close
Full Screen / Esc	
Printer-friendly Version	
Interactive Discussion	







**Fig. 2.** The “reliability” of the hard decision tree classification results shown in Fig. 1. For each pixel the number of unique classes (maximum 9) that it could be independently classified as over the 30 decision tree classification runs is shown. Pixels reporting a value of 1 were always classified as one particular LCLU type, whereas pixels reporting values of 5–7 were variously classified into between 5–7 LCLU types. White shows unclassified (water bodies, clouds, cloud shadows, settlement areas, or no Landsat data).

**Sensitivity analysis  
of the GEMS soil  
organic carbon  
model**

A. M. Dieye et al.

Title Page

Abstract Introduction

Conclusions References

Tables Figures

⏪ ⏩

◀ ▶

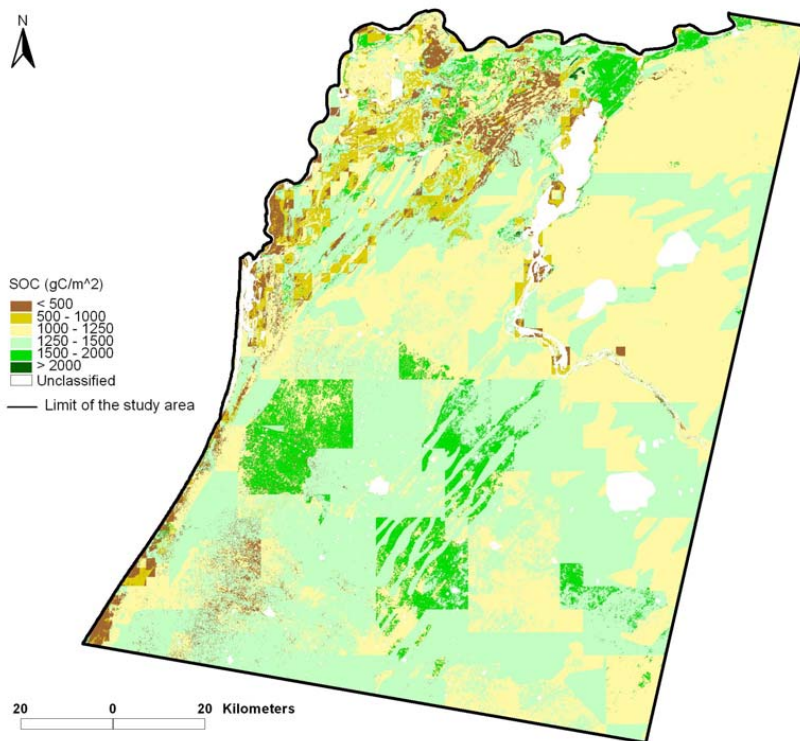
Back Close

Full Screen / Esc

Printer-friendly Version

Interactive Discussion





**Fig. 3.** GEMS soil organic carbon (SOC) model output for 2000 using the 9 class 28.5m Landsat hard decision tree classification illustrated in Fig. 1 and the corresponding spatially explicit model inputs for the 9 LCLU classes. White shows areas where no SOC was modeled (water bodies, clouds, cloud shadows, settlement areas, or no Landsat data).

**Sensitivity analysis  
of the GEMS soil  
organic carbon  
model**

A. M. Dieye et al.

Title Page

Abstract Introduction

Conclusions References

Tables Figures

◀ ▶

◀ ▶

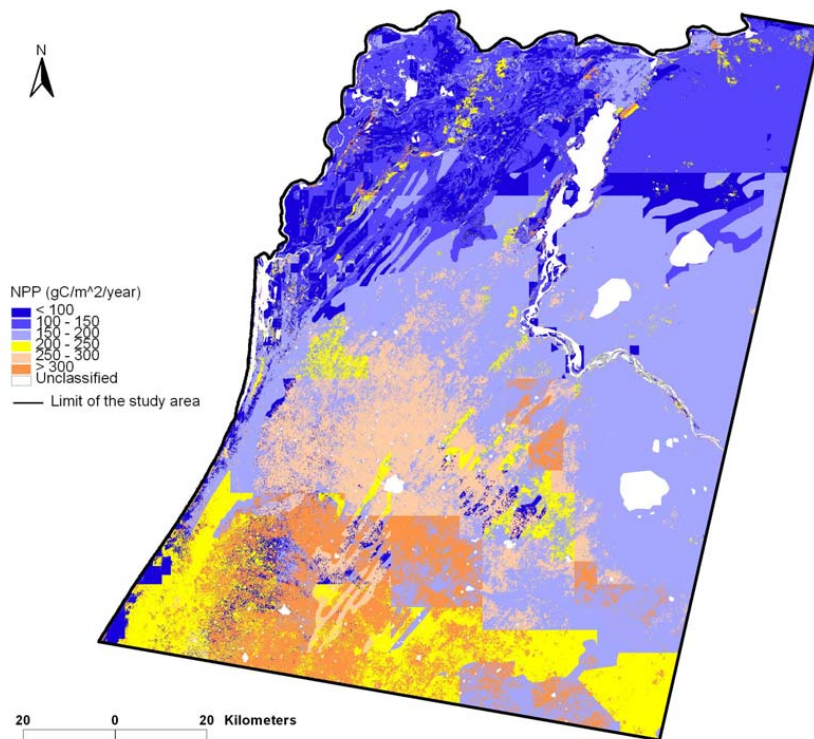
Back Close

Full Screen / Esc

Printer-friendly Version

Interactive Discussion





**Fig. 4.** GEMS net primary productivity (NPP) model output for 2000 using the 9 class 28.5 m Landsat hard decision tree classification illustrated in Fig. 1 and the corresponding spatially explicit model inputs for the 9 LCLU classes. White shows areas where no NPP was modeled (water bodies, clouds, cloud shadows, settlement areas, or no Landsat data).

**Sensitivity analysis  
of the GEMS soil  
organic carbon  
model**

A. M. Dieye et al.

Title Page

Abstract Introduction

Conclusions References

Tables Figures

◀ ▶

◀ ▶

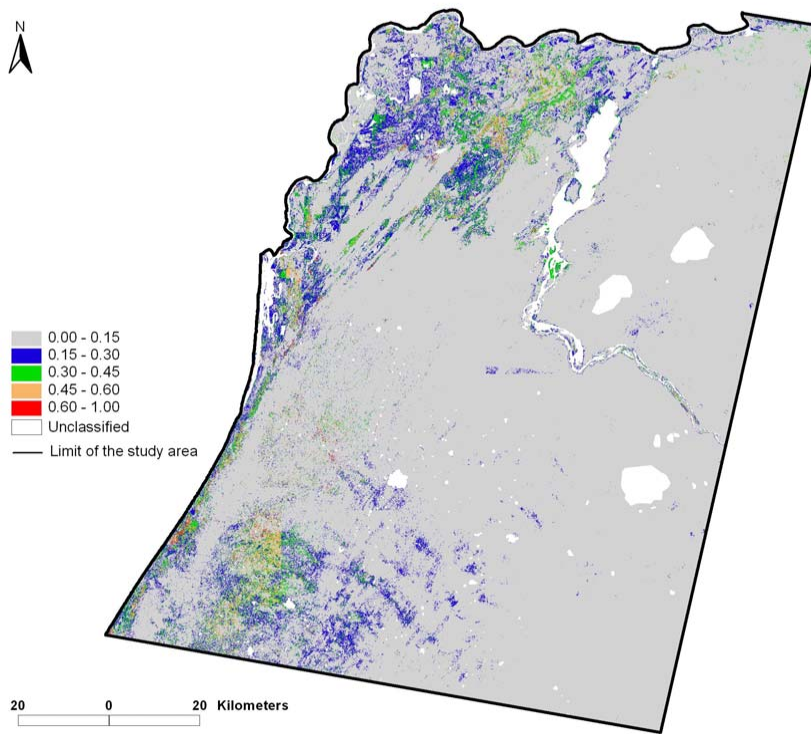
Back Close

Full Screen / Esc

Printer-friendly Version

Interactive Discussion





**Fig. 5.** The soil organic carbon (SOC) coefficient derived from the 30 soft decision tree classification model runs. The coefficient of variation (standard deviation divided by mean) is dimensionless. The 2000 Landsat data were classified 30 times into one of more the 9 LCLU classes and the SOC modeled for the corresponding spatially explicit model inputs for those classes. White shows areas where no SOC was modeled (water bodies, clouds, cloud shadows, settlement areas, or no Landsat data).

**Sensitivity analysis  
of the GEMS soil  
organic carbon  
model**

A. M. Dieye et al.

Title Page

Abstract Introduction

Conclusions References

Tables Figures

⏪ ⏩

◀ ▶

Back Close

Full Screen / Esc

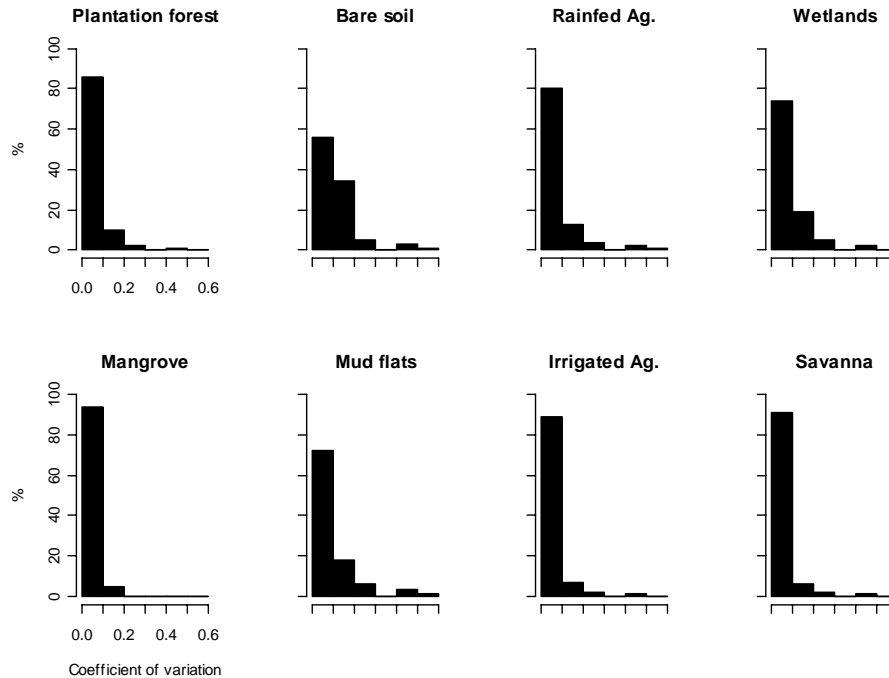
Printer-friendly Version

Interactive Discussion



**Sensitivity analysis  
of the GEMS soil  
organic carbon  
model**

A. M. Dieye et al.



**Fig. 6.** Histograms of the year 2000 SOC coefficient of variation (Fig. 5) for each land cover land use class defined by the hard classification (Fig. 1).

Title Page

Abstract Introduction

Conclusions References

Tables Figures

⏪ ⏩

◀ ▶

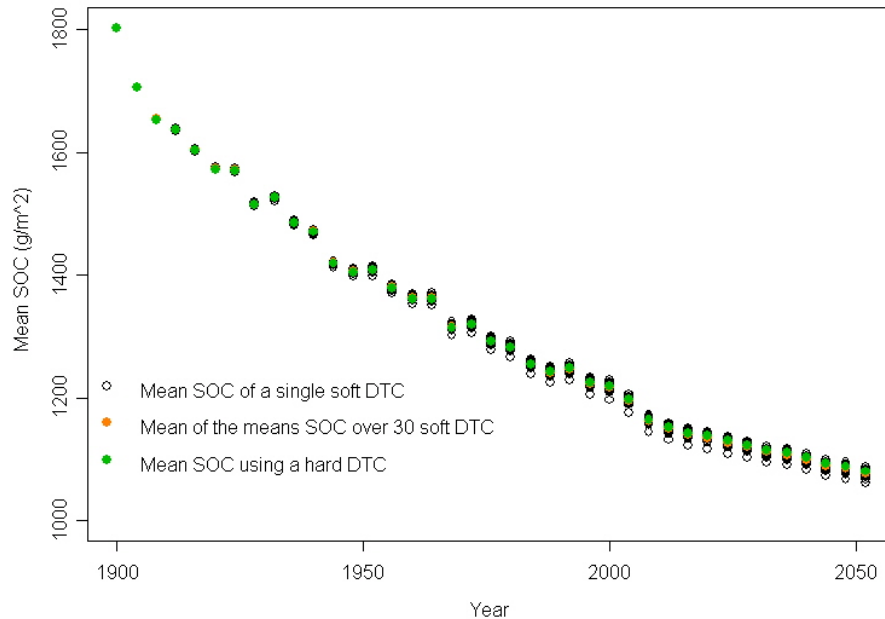
Back Close

Full Screen / Esc

Printer-friendly Version

Interactive Discussion





**Fig. 7.** Mean GEMS modeled soil organic carbon (SOC) computed for the entire study area under the no climate change scenario, from 1900 to 2052 at 4 yearly intervals, using the 9 land cover land uses classes and different Landsat classification approaches. The open circles show the mean SOC for each of the 30 independent bagged decision trees computed using the soft classification-carbon assignment approach; the orange filled circles show the mean across 30 soft classification simulations; the green filled circles show the mean SOC derived simulations using the hard decision tree classification.

**Sensitivity analysis of the GEMS soil organic carbon model**

A. M. Dieye et al.

Title Page

Abstract Introduction

Conclusions References

Tables Figures

⏪ ⏩

◀ ▶

Back Close

Full Screen / Esc

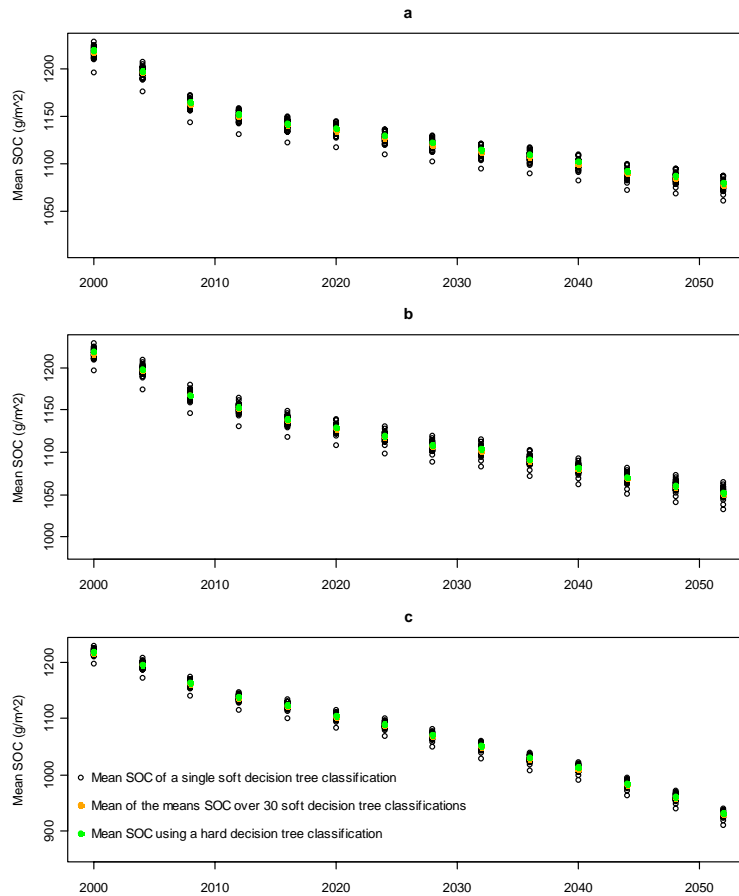
Printer-friendly Version

Interactive Discussion



## Sensitivity analysis of the GEMS soil organic carbon model

A. M. Dieye et al.



**Fig. 8.** Mean GEMS modeled soil organic carbon (SOC) computed for all the study area for the period 2000 to 2052, under the (a) no, (b) low, and (c) high climate change scenarios.