

**BGD**

9, 109–150, 2012

**Atlantic Ocean  
microbial diversity**

C. J. Friedline et al.

# Microbial community diversity of the eastern Atlantic Ocean reveals geographic differences

C. J. Friedline<sup>1</sup>, R. B. Franklin<sup>2</sup>, S. L. McCallister<sup>2,3</sup>, and M. C. Rivera<sup>1,2</sup>

<sup>1</sup>Center for the Study of Biological Complexity, Virginia Commonwealth University, Richmond, VA, USA

<sup>2</sup>Department of Biology, Virginia Commonwealth University, Richmond, VA, USA

<sup>3</sup>Center for Environmental Studies, Virginia Commonwealth University, Richmond, VA, USA

Received: 6 December 2011 – Accepted: 12 December 2011 – Published: 3 January 2012

Correspondence to: M. C. Rivera (mcrivera@vcu.edu)

Published by Copernicus Publications on behalf of the European Geosciences Union.

Title Page

Abstract

Introduction

Conclusions

References

Tables

Figures

◀

▶

◀

▶

Back

Close

Full Screen / Esc

Printer-friendly Version

Interactive Discussion



## Abstract

Prokaryotic communities are recognized as major drivers of the biogeochemical processes in the oceans. However, the genetic diversity and composition of those communities is poorly understood. The aim of this study was to investigate the eubacterial communities in three different water layers: surface (2–20 m), deep chlorophyll maximum (DCM; 28–90 m), and deep (100–4600 m) at nine stations along the eastern Atlantic Ocean from 42.8° N to 23.7° S. In order to describe the dynamics of the eubacterial assemblages in relation to depth, associated environmental properties, and Longhurstian ecological provinces community DNA was extracted from 16 samples, from which the V6 region of 16s rDNA was PCR-amplified with eubacteria-specific primers, and the PCR amplicons were pyrosequenced. A total of 352 029 sequences were generated; after quality filtering and processing, 257 260 sequences were clustered into 2871 normalized Operational Taxonomic Units (OTU) using a definition of 97 % sequence identity. Comparisons of the phylogenetic affiliation of those 2871 OTUs show more than 54 % of them were assigned to the Proteobacteria, with the Alphaproteobacteria representing 48 % of the total Proteobacteria OTUs, and the Gammaproteobacteria representing 22 %. Within the Alphaproteobacteria-affiliated OTUs, 44 % of the OTUs were associated with the ubiquitous SAR11 clade. The phylum Cyanobacteria represent 10 % of the reads, with the majority of those reads among the Gp11a family including *Prochlorococcus* and *Synechococcus*. Among the Gammaproteobacteria, a single OTU affiliated to *Alteromonas* comprises ~3 % of the abundance. The phyla Bacteroidetes, Verrucomicrobia, Actinobacteria, and Firmicutes represent approximately 7 %, 0.8 %, 2 %, and 0.05 % of the read abundance, respectively. Community ecology statistical analyses and a novel implementation of Bayesian inference suggests that eastern Atlantic Ocean eubacterial assemblages are vertically stratified and associated with water layers characterized by unique environmental signals (e.g., temperature, salinity, and nutrients). Genetic composition of eubacterial communities from the same water layer are more similar to each other than to the

**BGD**

9, 109–150, 2012

## Atlantic Ocean microbial diversity

C. J. Friedline et al.

Title Page

Abstract

Introduction

Conclusions

References

Tables

Figures

◀

▶

◀

▶

Back

Close

Full Screen / Esc

Printer-friendly Version

Interactive Discussion



communities from different water layers. Moreover, within the same water layer the separation of the communities appears to show a significant distance effect. Surface eubacterial communities displayed a general congruency with the ecological provinces defined by Longhurst with exceptions usually associated with unique hydrographic and biogeochemical features. Collectively, our findings suggest that a vertical and latitudinal biogeographical signature is present in the studied communities and that both environmental parameters and ecological provinces are drivers of eubacterial assemblages in the eastern Atlantic Ocean.

## 1 Introduction

After 3.5 billion years of evolution, prokaryotes have developed the capacity to occupy and exploit every habitat on the biosphere. Prokaryotes are responsible for cycling the organic and inorganic compounds essential for life, and are the main drivers of global biogeochemistry. Our knowledge of the microbial loop and its significance in the carbon and nutrient cycles of the ocean has grown exponentially over the last 35 yr. The introduction of culture-free techniques for enumerating bacteria (Hobbie et al., 1977) coupled with the increased sample through-put provided by flow cytometry (Gasol and del Giorgio, 2000) have revealed some significant roles prokaryotes play in the ocean. For example, they account for up to 70% of the total biomass (Fuhrman and Campbell, 1998), are responsible for 50% of the primary production on earth (Fuhrman and Azam, 1982; Azam et al., 1983) and carry out over 95% of the respiration in the ocean (del Giorgio and Duarte, 2002). Although prokaryotes are ubiquitous and abundant in marine ecosystems, relatively little is known about the diversity and composition of the complex microbial communities found there. In particular, it remains unclear what the principle drivers are that control the distribution of marine microbes, or how this diversity may influence the biogeochemical functioning of marine ecosystems. Likewise, our understanding of how microbial diversity varies over time and space is lacking, hampering our ability to forecast potential alterations in microbial community structure and ecological function that may result from global climate change.

**BGD**

9, 109–150, 2012

## Atlantic Ocean microbial diversity

C. J. Friedline et al.

Title Page

Abstract

Introduction

Conclusions

References

Tables

Figures

◀

▶

◀

▶

Back

Close

Full Screen / Esc

Printer-friendly Version

Interactive Discussion



**Atlantic Ocean  
microbial diversity**

C. J. Friedline et al.

Title Page

Abstract

Introduction

Conclusions

References

Tables

Figures

◀

▶

◀

▶

Back

Close

Full Screen / Esc

Printer-friendly Version

Interactive Discussion



Methodological constraints have historically limited our ability to study microbial diversity, and any biogeochemical implications it may have, but these restrictions have lessened with the development of genomic technologies. In particular, metagenomics approaches, that couple polymerase chain reaction (PCR) amplification and high-throughput sequencing, have become a popular tool to survey microbial communities (Giovannoni and Stingl, 2005; Massana et al., 2008). More recently, next-generation sequencing technology, such as 454 pyrosequencing, has been applied, yielding amounts of data orders of magnitude greater than conventional sequencing approaches (Kirchman et al., 2010; Agogue et al., 2011). These molecular techniques most often make use of the gene that encodes the small subunit ribosomal RNA (16S rRNA/rDNA) as a phylogenetic marker. However, there are currently no clear rules for the depth of phylogenetic relationships that define taxonomic ranks with this system; as a result, efforts to study microbial diversity are further complicated by the lack of an acceptable classification scheme for defining diversity units (Cases and de Lorenzo, 2002). Microbiologists proceed by using operational taxonomic units (OTUs) in which a pre-defined level of sequence identity is necessary for organisms to be classified as distinct taxa.

During the past decade, the application of molecular techniques to survey ocean microbial communities has become quite popular, with most research efforts focused on cataloging microbial diversity (Breitbart et al., 2002; Venter et al., 2004; Rusch et al., 2007) or documenting how specific environmental conditions influence the distribution of selected taxa (Galand et al., 2009a; Hewson et al., 2009; Agogue et al., 2011). As a result, we know that prokaryotic diversity is high in the ocean, that these communities tend to be dominated by a few abundant taxa, and that the communities show high degrees of richness in rare species (Breitbart et al., 2002; Venter et al., 2004; Sogin et al., 2006; Huber et al., 2007; Gilbert et al., 2009; Roesch et al., 2007). As our technical abilities continue to improve, and our inventory of microbial taxa grows, the next challenge for ocean microbial ecologists is to place this diversity in a broader ecological context. Very little is known about the distribution of bacteria in the ocean

as it relates to physicochemical parameters or ocean biogeochemistry. Moreover, what little information we do have has been largely region-specific (Hewson et al., 2006; Galand et al., 2009a; Yokokawa et al., 2010), limiting both our understanding of the factors that structure ocean eubacterial communities across biomes and our ability to study biogeographical patterns.

The purpose of the research presented here was to utilize high-throughput pyrosequencing technology to explore the diversity of eubacterial assemblages in the eastern Atlantic Ocean, while simultaneously considering whether these communities exhibited biogeographical patterns at large spatial scales. Samples were collected along a 7700 km meridional transect, and the relative importance of environmental conditions versus spatial separation was evaluated using both ecological statistics and a novel application of Bayesian hypothesis testing. Considering Longhurst's conceptual model, which partitioned the ocean into biogeochemical provinces (Longhurst, 1998) based on thermohaline properties, remotely-sensed data of chlorophyll concentrations, nutrient fields, and seasonal changes in the mixed-layer depth, we collected samples from six major provinces: North Atlantic Subtropical East (NASE), North Atlantic Tropical Gyral (NATR), Western Tropical Atlantic (WTRA), Eastern Tropical Atlantic (ETRA), South Atlantic Gyral Province (SATL) and Benguela Current Coastal (BENG). These provinces represent discontinuities (habitat patches) that could modulate the hypothesized biogeographical signature in our microbial community data.

## 2 Materials and methods

### 2.1 Study area and water sample collection

Sampling of the eastern Atlantic Ocean was conducted in November 2008 on a meridional transect from 50.2° N to 31.4° S during the cruise ANT XXV/1 on the RV Polarstern as it traveled from Bremerhaven (Germany) to Cape Town (South Africa). Water samples (~50 L) were collected for eubacterial community analysis from nine

**BGD**

9, 109–150, 2012

## Atlantic Ocean microbial diversity

C. J. Friedline et al.

Title Page

Abstract

Introduction

Conclusions

References

Tables

Figures

◀

▶

◀

▶

Back

Close

Full Screen / Esc

Printer-friendly Version

Interactive Discussion



different stations along the transect; at selected stations, water was collected from multiple depths yielding a total of sixteen samples for pyrosequencing (Fig. 1). Surface water samples were collected from a Teflon “Fish” sampler fixed alongside the ship; water from depth was obtained from a rosette sampler connected to Conductivity/Temperature/Depth (CTD) instrumentation.

## 2.2 Oceanographic variables and nutrient concentrations

A Seabird 911 Plus CTD with a WET Labs ECO-FL fluorometer was used to record the water temperature, salinity, and chlorophyll-*a* fluorescence (Chl-*a*), associated with each eubacterial sample. In addition, samples for determination of dissolved nutrients were collected concomitantly and processed according to standard methods for seawater analysis (see also Koch and Kattner, this issue). Available data included dissolved organic carbon and nitrogen (DOC, DON), nitrate (NO<sub>3</sub><sup>-</sup>), nitrite (NO<sub>2</sub><sup>-</sup>), ammonium (NH<sub>4</sub><sup>+</sup>), phosphate (PO<sub>4</sub><sup>3-</sup>), and dissolved silicate (Si) concentrations.

## 2.3 Preparation of eubacterial community samples

Samples for molecular analysis of eubacterial community composition were obtained by sequential filtration using 142 mm diameter Isopore™ polycarbonate membranes (Millipore, Billerica, MA, USA). Water was first passed through a 3 μm pore-size filter (Millipore TSTP 14250), to remove the eukaryotic fraction of the community, and then through a 0.2 μm pore-size filter (Millipore GTTP 14250) to concentrate the prokaryotic biomass. Each filter was immediately placed in a sterile polyethylene sample bag with 10 ml of filter-sterilized TENS buffer (50 mM Tris-HCL (pH 8.0), 20 mM EDTA, 400 mM NaCl, and 0.75 M sucrose) and stored at -80 °C as per Rusch et al. (2007). Frozen samples were subsequently shipped in a dry shipper filled with liquid nitrogen and then returned to -80 °C freezer until DNA extraction could be performed (within 1 month). Total DNA was extracted from the 0.2 μm filters using the MoBio UltraClean® Water DNA Isolation Kit (Cat #14800-NF, Carlsbad, CA, USA). DNA concentrations were

**BGD**

9, 109–150, 2012

## Atlantic Ocean microbial diversity

C. J. Friedline et al.

Title Page

Abstract

Introduction

Conclusions

References

Tables

Figures

◀

▶

◀

▶

Back

Close

Full Screen / Esc

Printer-friendly Version

Interactive Discussion



determined using a Nanodrop 8000 Spectrophotometer (Thermo Scientific, Wilmington, DE, USA). DNA extracts were dried and shipped to the International Census of Marine Microbes (ICoMM) program at Marine Biological Laboratory (MBL) in Woods Hole, MA (USA) for 454 pyrosequencing.

## 5 2.4 PCR amplification and sequencing of the 16S rDNA gene fragments

To analyze community diversity, eubacteria-specific primers complementary to hyper-variable region 6 (V6) of the 16S rRNA gene were used to generate PCR amplicons using a combination of five forward and four reverse primers (Huber et al., 2007; Huse et al., 2008, 2010). Three independent PCR reactions were performed for each sam-  
10 ple; the products were combined and analyzed using standard MBL protocols on 454 GS-FLX sequencer (Roche, California, USA). The sequence data generated from the present study are available via the Visualization and Analysis of Microbial Population Structures (VAMPS) web interface (<http://vamps.mbl.edu>), identified as Atlantic Ocean Transect (AOT).

## 15 2.5 Sequence data processing

Trimmed Fasta sequences containing neither sequencing primer nor multiplexing bar-  
code tag were downloaded from the VAMPS website. The initial trimming, performed  
at MBL (Huse et al., 2007), removed suspected low-quality reads containing unex-  
pected sequencing tags, primers, ambiguous bases, or were less than 50 nucleotides  
20 in length after trimming. We further filtered the reads by removing reads that con-  
tained suspected homopolymers ( $n > 4$ ) and were longer than 75 bases to increase  
the sample classification accuracy by reducing the effect of sequencing errors and  
PCR-generated chimeras. The sequence reads generated from the community PCR  
amplicons were clustered into Operational Taxonomic Units (OTU) using the tools im-  
25 plemented in mothur (Schloss et al., 2009).

**BGD**

9, 109–150, 2012

## Atlantic Ocean microbial diversity

C. J. Friedline et al.

Title Page

Abstract

Introduction

Conclusions

References

Tables

Figures

◀

▶

◀

▶

Back

Close

Full Screen / Esc

Printer-friendly Version

Interactive Discussion



**Atlantic Ocean  
microbial diversity**

C. J. Friedline et al.

Title Page

Abstract

Introduction

Conclusions

References

Tables

Figures

◀

▶

◀

▶

Back

Close

Full Screen / Esc

Printer-friendly Version

Interactive Discussion



The sequencing reads were first classified using the mothur implementation of the Ribosomal Database Project (RDP) classifier (Wang et al., 2007). Sequence reads classified as “Bacteria” with less than 95 % bootstrap support after 1000 iterations (or as non-bacteria) were excluded from further analysis. The remaining sequence reads were reduced to a unique set of sequences by collapsing to one sequence all the sets of identical sequences. The unique sequences were aligned using mothur (Schloss, 2009) to a V6-specific, curated, pre-aligned database derived from the SILVA alignment. The full database (50 000 sites) is distributed from www.mothur.org and contains 14 956 sequences while our database (2985 sites) contains 13 275 eubacterial sequences, following removal of any sequence containing “N”. Briefly, BLAST (Altschul et al., 1990) was used to determine the boundaries of the V6 region within the full 16S rRNA SILVA alignment and, programmatically, the region was extracted and the gaps removed, generating a multiple sequence alignment containing all the unique sequences with the gap pattern of the original SILVA alignment. To further reduce sequencing noise, the reads were pre-clustered such that any set of sequences with a single nucleotide change were considered as equivalent (Huse et al., 2010). As a result of the pre-clustering step, reads that were found only once in the sample set (singletons) were removed from the analysis. It has been observed that singletons are likely the result of PCR or sequencing error (Huse et al., 2010). From this non-singleton alignment, a pairwise distance matrix was created (treating multiple gaps as one) and used to construct OTUs using average-linkage clustering at 97 % identity, which loosely translates as species-level separation. Because initially every single sequence read had been assigned a taxonomic classification, each OTU taxonomic classification is the consensus derived from the classification of the individual reads comprising the OTU (50 % bootstrap support over 1000 iterations, similar to Claesson et al., 2009). The abundances of the resulting OTUs were normalized using the smallest sample number ( $n = 6687$ ). Those OTUs that, following normalization had zero abundance in all samples ( $n = 555$ ), were removed from further analysis; the total number of reads left after normalization was 106 613, clustered into 2871 OTUs.



## 2.6 Ecological statistics

To determine how thoroughly a community has been sampled, it is necessary to estimate the “species richness” of the community. Species richness refers to the total number of different OTUs (species) present in a community, both seen and unseen, and is statistically estimated based on the number of observed OTUs from the same community. Species richness estimates for each community were obtained using CatchAll version 3.0 (Bunge, 2011). The CatchAll parametric estimates (“Best Model”) are reported along with traditional non-parametric species richness estimates ACE (Chao and Lee, 1992) and Chao1 (Chao, 1984). The CatchAll parametric estimator is particularly attractive in this setting because it tends to avoid underestimation common with ACE and Chao1 when diversity is high and is robust against influence of outliers (Bunge, 2011). Rarefaction curves were also generated using mothur to assess the degree to which sampling effort was saturated.

Sequencing results were analyzed using principal coordinate analysis (PCoA), a distance-based ordination method that is commonly applied to ecological data to facilitate visualization and interpretation of patterns in community composition. PCoA was conducted using the Bray-Curtis index of similarity to group samples based on the normalized abundance data. The first two coordinates were plotted as a means of visualizing the relative similarity in community composition across samples. Analysis of similarity (ANOSIM) (Clarke, 1993) was used to test whether groups were different using the Bray-Curtis index and 10 000 permutations. Spearman correlation analysis was used to compare the PCoA coordinates to OTU abundance to determine taxonomic drivers of the PCoA separation. Similarly, a correlation analysis was performed to determine the environmental parameters best linked to community separation in PCoA space. The environmental variables tested were: log depth, salinity, temperature, Chl-*a*, DOC, DON, NO<sub>3</sub><sup>-</sup>, NO<sub>2</sub><sup>-</sup>, NH<sub>4</sub><sup>+</sup>, PO<sub>4</sub><sup>3-</sup>, and Si. A series of Mantel (Rossi, 1996) and partial Mantel tests (Smouse et al., 1986) were used to examine the relationship between microbial community structure, environmental conditions, and separation

**BGD**

9, 109–150, 2012

### Atlantic Ocean microbial diversity

C. J. Friedline et al.

Title Page

Abstract

Introduction

Conclusions

References

Tables

Figures

◀

▶

◀

▶

Back

Close

Full Screen / Esc

Printer-friendly Version

Interactive Discussion



distance. Specifically, we compared the following matrices: community composition as Bray-Curtis similarity based on OTU abundance, spatial separation as surface distance in km (Stott, 2011), and environmental similarity calculated using Gower's coefficient (Gower, 1971). The environmental matrix included depth (log transformed), salinity, temperature, Chl-*a*, and dissolved nutrients. When necessary, similarity matrices were transformed to dissimilarity matrices as: Dissimilarity = 1 – Similarity. Because environmental measurements were not made for sample 8, it was excluded in any data manipulations that included environmental properties. The significance of the Mantel and partial Mantel test results was determined via permutation using 10 000 iterations. All ecological statistics were performed using the PAST software package version 2.10 (Hammer and Harper, 2001).

## 2.7 Bayesian inference

In addition to the ecological statistics described above, we also applied the principles of phenetics, or numerical taxonomy (Sneath, 1973), to examine the microbial community dataset. For this purpose, we define a tree as a branching diagram composed of a set of branches (edges) and nodes with the tips of the branches labeled with a sample name. Bayesian inference was then used to estimate the unrooted tree topology that best describes the relationships among the microbial communities. Each of the 2871 OTUs was treated as a phenotypic character or trait of the community, and each character (OTU) was assigned one of 10 different character states (from 0–9) based on the relative abundance of the character (OTU) in the sampled community. In doing this, we assumed the following: (i) that the properties of a community can be modeled as a collection of independent and identically distributed (i.i.d.) OTU abundances, (ii) the abundance pattern for any OTU is independent of the pattern for any other OTU, and (iii) that the distribution and abundance pattern of all OTUs contain information about the relationships of the sampled communities. Experimental measurements, like OTU abundance, that generate an array of named characters for each sample studied can be classified as character-type data and represented as an  $M \times N$

**BGD**

9, 109–150, 2012

## Atlantic Ocean microbial diversity

C. J. Friedline et al.

Title Page

Abstract

Introduction

Conclusions

References

Tables

Figures

◀

▶

◀

▶

Back

Close

Full Screen / Esc

Printer-friendly Version

Interactive Discussion



data matrix. Traditionally in biology, the phenetic method has been used to classify entities into groups based on overall similarity using morphometric or character type data. Any set of entities can be grouped by their similarity with respect to observable characters, following techniques rooted in the principles of phenetic analysis (Sneath, 1973). Conversely, a typical resemblance estimation analysis uses a measure of similarity (pairwise distance) between the entities followed by a cluster analysis on those similarities. By reducing characters in a sample to a pairwise distance between any two samples, traditional approaches lose the information contained in the distribution and abundance of the characters across the communities, potentially missing some fine-scale resolution.

In our case, the relationships between 16 samples can be described by one of  $2.13 \times 10^{14}$  alternative hypotheses, or tree topologies. The relationships of the samples illustrated by the tree topology reflect only similarity in the composition and abundance of OTUs and no evolutionary relationships are assumed, because no evolutionary model was implied. The OTU abundance values across our 16 samples ranged from zero to thousands, similar to morphology or character data with a large variance. The space of the abundance values in the matrix was reduced or discretized to 10 character states using gap recoding (Thiele, 1993). Equation (1) recodes normalized abundance ( $A_{O_{norm}}$ ) of a particular OTU ( $O$ ) in a sample ( $S$ ) relative to its maximum value, and standardizes the values to a 0–9 scale.

$$A_{OS_{coded}} = \text{round} \left[ \frac{9 \times (A_{OS_{norm}} - \min[A_{O_{norm}}])}{\text{range}[A_{O_{norm}}]} \right] \quad (1)$$

In this formula,  $A_{OS_{coded}}$  represents the abundance value of OTU  $O$  in sample  $S$  recoded to a discrete value in the range [0, 9].  $\min[A_{O_{norm}}]$  denotes the minimum normalized OTU  $O$  abundance value in the matrix across all 16 samples and  $\text{range}[A_{O_{norm}}]$  represents the value of the range of the normalized OTU abundances across all 16 samples. The 10 transformed values represent character states that are compatible with the standard model for discrete morphology data as implemented by MrBayes 3

## BGD

9, 109–150, 2012

### Atlantic Ocean microbial diversity

C. J. Friedline et al.

Title Page

Abstract

Introduction

Conclusions

References

Tables

Figures

◀

▶

◀

▶

Back

Close

Full Screen / Esc

Printer-friendly Version

Interactive Discussion



(Huelsenbeck and Ronquist, 2001). However, because OTUs that are distributed only among a few states across all samples will be treated equally, we need to account for variations in character state changes of different magnitude. For example, an OTU distributed among samples with all zeros and ones will be treated equally if that same OTU was distributed with those ones changed to nines. To do this, we converted each integer value to its coded four-bit binary equivalent, in effect quadrupling the number of matrix columns (e.g., 9 was converted to 1001, and 1 to 0001). Using MrBayes, topologies were reconstructed from the transformed/binary-encoded matrix using the default parameters for the standard 0–9 character states morphology model with the following assumptions: (i) an equal state frequencies, (ii) across-sites rate variation following a gamma distribution, (iii) all sites are informative and unordered, and (iv) 10 million iterations (Huelsenbeck and Ronquist, 2001).

### 3 Results and discussion

In this study we report the vertical and latitudinal distribution and abundance of eubacteria along an eastern Atlantic Ocean transect (Fig. 1). Specifically, our goals were to determine (i) if the eubacterial communities from the surface, DCM, and deep water layers were significantly different, (ii) if the composition of those communities show a latitudinal gradient, and (iii) if the numerous physical processes defining the different ecological provinces also influence the structure of the eubacterial communities. One main objective of the work was to contribute to a growing understanding of how the numerous physical processes defining the different ecological provinces also influence the structure of the eubacterial communities. In addition, because the seaward boundaries of Longhurst provinces were set at approximately 200–400 m from shore, and our cruise track was only 300–450 m off shore, we anticipated an effect from the coastal waters of the Canary Current upwelling system (Taylor et al., 2011). The Canary Current ecosystem (12–43° N) borders NASE, NATR, WTRA and ETRA, and consists of complex hydrographic features that contribute to unique biogeographic

**BGD**

9, 109–150, 2012

## Atlantic Ocean microbial diversity

C. J. Friedline et al.

Title Page

Abstract

Introduction

Conclusions

References

Tables

Figures

◀

▶

◀

▶

Back

Close

Full Screen / Esc

Printer-friendly Version

Interactive Discussion



subregions (Aristegui et al., 2009). The association and potential entrainment of microbial assemblages with these distinct hydrographic features may also have an impact on community composition and diversity. Further, we used the depth of the pycnocline, the euphotic zone, and the deep chlorophyll maximum (DCM) as indicators of the physical state of the water column and considered whether communities from equivalent vertical zones were influenced by similar physical processes. Our study takes advantage of the latest sequencing technologies to understand the phylogenetic composition and structure of those microbial communities, and then places the information in a biogeographical as well as a biogeochemical context.

### 3.1 Sequencing statistics and diversity estimates

Pyrosequencing generated 352 029 raw sequence reads (22 002  $\pm$  9959 reads/sample); summary statistics are shown in Table 1. After filtering out low-quality reads and removing sequence reads present only once (singletons), a total of 257 260 non-singleton (NS) reads remained. It has been observed that sequencing and base-calling errors are potentially responsible for singletons, which can artificially inflate diversity estimates (Quince et al., 2008; Reeder and Knight, 2009; Kunin et al., 2010). After average-linkage clustering, 3426 OTUs were identified using, at an average 97 % sequence identity per OTU.

In order to correct for the broad range in sample sizes, the OTU abundances are normalized to the smallest sample size, resulting in a total of 2871 OTUs. Overall, we find an average of 16 079  $\pm$  7374 NS reads per sample, with a range between 6687 and 36 569 reads (samples 11 and 9, respectively). The reads have an average length of 62  $\pm$  3 bases and GC content of 47 %  $\pm$  5 % When all filtered reads are considered, we find that of the 628  $\pm$  270 unique reads/sample, 408  $\pm$  163 reads/sample are found only once per sample (i.e., singletons). The estimates of sample richness vary across a wide range (Table 1), the highest of which come from CatchAll (1979  $\pm$  1737 ). Within the CatchAll richness estimates, sample 16 had the lowest estimate (521 OTUs) while sample 12 had the highest (7295 OTUs). Comparison of the rarefaction curves (Fig. 2)

## Atlantic Ocean microbial diversity

C. J. Friedline et al.

Title Page

Abstract

Introduction

Conclusions

References

Tables

Figures

◀

▶

◀

▶

Back

Close

Full Screen / Esc

Printer-friendly Version

Interactive Discussion



shows that some of the eubacterial communities have reached an asymptote, indicating they have been completely sampled. Although normalization tends to down-bias toward more reasonable sampling efforts, our rarefaction curves indicate that there are still several communities for which more sampling may be needed in order to adequately assess community composition. Analysis of the rarefaction curves suggests that some of the deep-water communities (e.g. 2, 8, and 12) are more diverse than the rest of the communities, as previously shown for the bathypelagic bacterial communities of the North Atlantic (Agogue et al., 2011).

### 3.2 Eubacterial community composition

Analysis of the normalized abundance of OTUs across all communities reveals that nearly half of all the reads are distributed among only the top 25 OTUs (Table 2). These 25 OTUs represent less than 1 % of the total richness (2871 OTUs) we observed. This suggests that our communities are structured around a relatively small number of very abundant OTUs and, possibly, a large number of sparsely represented OTUs. This conclusion is further supported by the fact that 35 % of the total read abundance is represented by the top 10 most abundant OTUs (0.3 %), 75 % by the top 86 OTUs (3 %), and 95 % by the top 589 OTUs (20 %). A total of 35 OTUs are common to all 16 samples, representing 52 % of the total read abundance. Of these ubiquitous OTUs, many are prominent marine organisms, including six OTUs affiliated with the Alphaproteobacteria SAR11 clade (22 % of the total read abundance), four from the Cyanobacteria Family II (8 %), and one identified as *Alteromonas* (3 %).

Analysis of the distribution range of the 25 most abundant OTUs immediately suggests a significant difference in OTU abundance across samples (Table 2). These differences appear even more dramatic when we consider the relative contribution per sample of the 72 eubacterial taxonomic families identified, thus revealing taxa-specific distributions across sampling locations (Fig. 3). Although taxonomic families like the Alphaproteobacteria SAR11 and Cyanobacteria Family II clades are found across all samples, others, like some of the Gammaproteobacteria families were identified only

**BGD**

9, 109–150, 2012

## Atlantic Ocean microbial diversity

C. J. Friedline et al.

Title Page

Abstract

Introduction

Conclusions

References

Tables

Figures

◀

▶

◀

▶

Back

Close

Full Screen / Esc

Printer-friendly Version

Interactive Discussion



in the samples from deep waters. It is particularly interesting that there are several taxonomic families that are found exclusively in sample 2. It is possible that some of those unique taxa are endemic to the Mediterranean communities and were transported into the Atlantic by the Mediterranean outflow waters.

5 Taken together, these observations suggest a differential composition of the eubacterial communities, dependent not only on depth but also on geographical location. To further illustrate these observations, we used Venn diagrams to compare the distribution of OTUs across the three water layers (surface, DCM, and deep) and the four ecological provinces (Fig. 4). Of the 2871 OTUs identified, 1942 are found in the WTRA/ETRA provinces, 1355 in the NASE province, 753 in the NATR province, and 733 in the BENG/SATL provinces. Samples from the photic zone (surface and DCM) have a total richness of 1845 OTUs, while the deep-water samples have a total richness of 1913. Consistently, the highest richness is found in WTRA and ETRA provinces, which agrees with previous research that has demonstrated that marine prokaryotes exhibit a latitudinal gradient of increasing diversity toward the equator (Fuhrman et al., 10 2008). Overall, the Venn diagrams demonstrate that there are province- and depth-specific OTUs, revealing both habitat and biogeographical (spatial) signal in the genetic composition of the communities.

### 3.2.1 Surface communities

20 The surface layer has the highest exposure to solar radiation, and is very low in inorganic nutrients such as phosphorous and nitrogen; some have even classified this environment as extreme because it is so oligotrophic (Treusch et al., 2009). Further, surface waters influenced by particular wind bands may experience significant wind-induced turbulence and atmospheric deposition of aerosols, pollutants and Aeolian dust (Pohl et al., 2011; Xie et al., 2011). Analysis of the surface samples (i.e., those with a depth of 20 m or less), shows that over 75 % of the abundance is dominated by only five taxonomic groups: the Alphaproteobacteria clade SAR 11 ( $26 \% \pm 3 \%$ ), the Cyanobacteria clade Gp11a ( $10 \% \pm 5 \%$ ), the Gammaproteobacteria ( $10 \% \pm 2 \%$ ), 25

---

## Atlantic Ocean microbial diversity

C. J. Friedline et al.

---

Title Page

Abstract

Introduction

Conclusions

References

Tables

Figures

◀

▶

◀

▶

Back

Close

Full Screen / Esc

Printer-friendly Version

Interactive Discussion



5 other Proteobacteria ( $14\% \pm 1\%$ ), the Bacteroidetes ( $9\% \pm 2\%$ ) and the Verrucomicrobia ( $3\% \pm 5\%$ ). In sample 5, from a bloom encountered along the transect, the Cyanobacteria comprised only 2% of the abundance, while the Verrucomicrobia, the Gammaproteobacteria, the Bacteroidetes and the Actinobacteria are over-represented and comprise 37% of the total abundance. The altered community composition of this diatom-dominated bloom agrees with previous observations (Carlson et al., 2002; West et al., 2008) suggesting that the phytoplankton bloom may play an important role in determining the structure and composition of the eubacterial community.

### 3.2.2 DCM communities

10 The DCM is the region in the ocean water column with the highest concentration of chlorophyll. Generally located near the bottom of the photic zone, the DCM is a permanent feature in the tropics but varies seasonally in temperate waters. This zone is formed when the simultaneous availability of high concentrations of inorganic nutrients and appropriate intensity and wavelength of light generate the optimal conditions for phytoplankton development. As a result, it is in this region of the water column where most of the photosynthetic primary production occurs and the location of the highest microbial abundance. Seven communities from the DCM layer were analyzed in this study, representing all six ecological provinces along our transect. The depth of the DCM layer varied from 28 m in the BENG province to 90 m in the NATR province. Most of the sequence diversity present in the DCM communities is dominated by the following groups: Alphaproteobacteria clade SAR 11 ( $25\% \pm 4\%$ ), the Cyanobacteria clade Gp11a ( $10\% \pm 4\%$ ), the Gammaproteobacteria ( $13\% \pm 5\%$ ) and the Bacteroidetes ( $7\% \pm 2\%$ ).

### 3.2.3 Deep communities

25 Recent studies have demonstrated a rich diversity for the microbial communities residing in the deep waters of the ocean, despite the high pressure, low temperatures,

**BGD**

9, 109–150, 2012

## Atlantic Ocean microbial diversity

C. J. Friedline et al.

Title Page

Abstract

Introduction

Conclusions

References

Tables

Figures

◀

▶

◀

▶

Back

Close

Full Screen / Esc

Printer-friendly Version

Interactive Discussion





and an absence of light that might otherwise be expected to restrict eubacterial distributions (Nagata et al., 2000; Hewson et al., 2006; Sogin et al., 2006; Reinthaler et al., 2010; Agogue et al., 2011). Five of the communities we studied were obtained from this water layer (i.e., below the pycnocline, ranging in depth from 100–4600 m). Two of the samples (8 and 11) were obtained from the South Atlantic Central Water (SACW) within the WTRA province at depths of 100 and 200 m respectively. The three other samples, from depths greater than 1000 m (Sample 2: 1100 m, 12: 1300 m, and 14: 4604 m), were obtained from distinct geographical locations (NASE, WTRA, and BENG provinces, respectively) and different water masses with variable physical parameters (mainly temperature and salinity). The water masses included are: Eurafrian Mediterranean water (EMW), Antarctic Intermediate Water (AAIW), and Antarctic Bottom Water (AABW). The deep-zone communities are dominated by the Proteobacteria 73% abundance), with the SAR11 clade representing 28% of the total abundance. The phyla Cyanobacteria, Bacteroidetes, and Actinobacteria represent 7%, 4%, and 4% of the deep zone communities' abundance. Gammaproteobacteria are enriched in the deep-zone communities, representing 24% of the abundance. Among the Gammaproteobacteria, the Alteromonadales and the Oceanospirillales families represent 11% and 3% of the abundance, respectively. In comparison with the communities from the surface and the DCM zone, the deep zone communities showed a higher relative abundance of the Gammaproteobacteria, Actinobacteria, Firmicutes, and Bacteroidetes. Relative enrichment, in deep water samples, for the same phyla has been observed by others (Martín-Cuadrado et al., 2007; Sogin et al., 2006; Agogue et al., 2011).

### 3.3 Ecological drivers

#### 3.3.1 Spatial and environmental controls on bacteria community structure

In addition to increasing our understanding of the genetic diversity and distribution of eubacteria in the Atlantic Ocean, the pyrosequencing data we obtained allowed us to explore the relationship between eubacterial assemblage structure and several

**BGD**

9, 109–150, 2012

## Atlantic Ocean microbial diversity

C. J. Friedline et al.

Title Page

Abstract

Introduction

Conclusions

References

Tables

Figures

◀

▶

◀

▶

Back

Close

Full Screen / Esc

Printer-friendly Version

Interactive Discussion



environmental factors. This was accomplished using multivariate statistical tools common in community ecology to examine overall patterns in community composition in both biogeographical and biogeochemical contexts. First, a principal coordinate analysis (PCoA) was used to reduce the OTU abundance data into a small number of derived variables (coordinates) which, when plotted in a graphical space, arranged our samples along a gradient in overall community similarity. Using this approach, we see a clear clustering of the eubacterial communities according to their location in the water column (Fig. 5). The samples contained in the top triangle of the graph, above the solid line (Deep), are from the aphotic zone, with depths ranging from 100 to 4600 m. These samples were all from beneath the pycnocline, whereas the samples below the solid line are all above the pycnocline and within the photic zone. The photic-zone samples were further differentiated into two groups, separated by the dash line: Surface samples (2–20 m) and DCM samples (28–90 m). ANOSIM confirmed these three groups were significantly different ( $r = 0.65, p = 0.0001$ ; all pairwise comparisons  $p < 0.02$ ), and that classification by Longhurst province was not ( $r = 0.15, p = 0.14$ ). The lack of a significant relationship between all samples and Longhurst province is not necessarily unexpected as province designations are primarily restricted to the epipelagic zone and do not consider deeper water masses (Longhurst et al., 1995).

Correlation analysis was used to identify the OTUs contributing to the separation of samples via PCoA (Table 4). Four of the 25 most abundant OTUs (Table 2) (OTUs 24, 928, 286, and 496) are also important contributors in the PCoA separation of the samples. As one would expect, we see high correlations with some of the most abundant OTUs, but not exclusively. Of the less abundant OTUs contributing to the separation of the samples in the PCoA, some belong to taxonomic families showing differential patterns of abundance (Fig. 3), including members of the Erythrobacteraceae, Hyphomonadaceae, Rhodobacteraceae, Chromatiaceae, Colwelliaceae, Francisellaceae and Vibrionaceae families (OTUs 1678, 380, 93, 2244, 2192, 509, and 1166, respectively). The first axis of the PCoA distinguishes the surface samples from the deeper ones, with DCM samples being intermediate between the two. The second

**BGD**

9, 109–150, 2012

**Atlantic Ocean  
microbial diversity**

C. J. Friedline et al.

Title Page

Abstract

Introduction

Conclusions

References

Tables

Figures

◀

▶

◀

▶

Back

Close

Full Screen / Esc

Printer-friendly Version

Interactive Discussion



axis demonstrates a separation of the DCM samples, which appears to be driven primarily by many non-abundant OTUs. Overall, it is clear that the driving force behind separation in ordination space is not necessarily the most abundant community members, but rather the less abundant OTUs presumably adapted to environmental and biogeochemical conditions associated with geography, depth, or both.

Given the broad geographic range of these samples, the distinct eubacterial communities found in each depth category are likely not due to location in the water column per se but a response of the community to environmental factors that co-vary with depth. For example, the deep waters have colder temperatures, lower concentrations of DOC, and higher amounts of nitrate; each of these parameters has been shown to influence the composition of the ocean microbial community (Schattenhofer et al., 2009; Wietz et al., 2010; Agogue et al., 2011). Similarly, phytoplankton abundance and community structure can be an important factor in determining eubacterial community composition (Kerkhof et al., 1999; Pinhassi et al., 2003, 2004) and Chl-*a* values from our samples varied dramatically with depth. Chlorophyll-*a* concentrations are below detection in the deeper samples and significantly higher in the DCM. In the surface samples, Chl-*a* concentration was low (0.14–0.29 mg l<sup>-1</sup>) with the exception of sample 5 (2.8 mg l<sup>-1</sup>). The anomalously high Chl-*a* value for surface sample 5 is most likely attributable to a phytoplankton bloom stimulated by Aeolian dust deposit delivered from northeast trades blowing across the Saharan desert (Pohl et al., 2011; Taylor et al., 2011). It is notable that pigment analyses suggest that diatoms dominate blooms in these surface waters whereas the phytoplankton community at depth consists of a different phytoplankton assemblage and appears completely disconnected from the surface bloom (Taylor et al., 2011). This may explain why sample 5 is distinct from the other samples that contained high Chl-*a*.

There has been some limited research prior to our own demonstrating unique microbial assemblages associated with depth. For example, Treusch et al. (2009) identified distinct bacterial communities found in the low nutrient surface waters, the DCM, and the upper pelagic zone from vertical profiles at the Bermuda Atlantic Times series

**BGD**

9, 109–150, 2012

## Atlantic Ocean microbial diversity

C. J. Friedline et al.

Title Page

Abstract

Introduction

Conclusions

References

Tables

Figures

◀

▶

◀

▶

Back

Close

Full Screen / Esc

Printer-friendly Version

Interactive Discussion



**Atlantic Ocean  
microbial diversity**

C. J. Friedline et al.

Title Page

Abstract

Introduction

Conclusions

References

Tables

Figures

◀

▶

◀

▶

Back

Close

Full Screen / Esc

Printer-friendly Version

Interactive Discussion



(BATS). Their findings echo previous work noting disparate bacterial community assemblages in the euphotic zone compared to the mesopelagic (Giovannoni et al., 1996; Gordon and Giovannoni, 1996; Fuhrman and Davis, 1997; Wright et al., 1997). A novel outcome from the work at BATS was the resolution of a distinct microbial community in the surface, DCM, and deep layers, which our data also illustrate (Fig. 5). These community shifts may partially be a response to changes in the physical state of the water column thereby inducing selective forces based on light availability, destructive potential of UV radiation, pressure, and temperature. Further, community differences may be a response to changes in resource availability that develop as a consequence of these physical conditions. For example, we know that the distribution of heterotrophic bacteria can change with depth due to changes in DOC concentration (Eiler et al., 2003) or because of variations in the molecular composition of DOC when derived from different phytoplankton communities (Van Hannen et al., 1999). It has often been assumed that microbial communities in the bathypelagic ocean experience such stable physical conditions that diversity is low. However, our samples show higher diversity with depth, partially dispelling this notion. One suggested mechanism for enhanced diversity at depth is that the microorganisms respond to episodic delivery of resources, such as particulate organic matter from surface waters, which leads to higher community richness (Baltar et al., 2009; Bochdansky et al., 2010; Agogue et al., 2011).

To explicitly examine the biogeochemical conditions influencing the separation of the eubacterial communities, we compared the environmental variables with each coordinate from the PCoA (Table 3). In addition to depth, the first coordinate from the PCoA was significantly correlated with temperature and the concentration of several dissolved organic and inorganic nutrients. In contrast, separation of the community on the second coordinate primarily relates to differences in the concentration of Chl-*a* and salinity. These findings are consistent with the research summarized above, which indicates that the community changes we observed are the result of a complex and intricate coupling of multiple environmental parameters and biotic variables that may co-vary with location in the water column. In addition, we found evidence that

the distribution of OTUs in our dataset reflected some spatial structure. Significant results were obtained when a Mantel test was applied to compare community similarity to geographic distance (km separation calculated from sample latitude and longitude,  $r_M = 0.25, p = 0.04$ ). When a partial Mantel test was conducted to remove the influence of depth and local environmental conditions, this spatial relationship becomes even stronger ( $r_M = 0.35, p = 0.01$ ). Although heterogenic environmental conditions and spatial separation have a strong influence on the biogeographical distribution of species, only recently have we begun to understand how these conditions may define distinct microbial communities in marine habitats (Giovannoni and Stingl, 2005; Martiny et al., 2006; Pommier et al., 2006; DeLong, 2009; Fuhrman, 2009). For example, ocean water masses are frequently associated with unique microbial communities (Yokokawa et al., 2010; Varela et al., 2007; Galand et al., 2009b; Hewson et al., 2009; Agogue et al., 2011). However, it has been much more challenging to assess differences in microbial communities across adjacent oceanographic biomes and, in particular, across those with complex physical hydrographic features. Prior surveys have focused on the center regions of ecologically discrete provinces (Pommier et al., 2006; Martiny et al., 2009; Schattner et al., 2009; Wietz et al., 2010), and there is little work, such as ours, that considers the distribution pattern associated with the fluid boundaries between provinces (Ducklow, 2003) or in transition zones.

### 3.3.2 Bayesian inference of microbial communities relationships

Taken together, our ecological statistics demonstrate a clear separation of communities based on depth and reveal that samples from the same water layer are more similar to each other than they are to geographically-proximal samples obtained from different water layers. Communities separated by thousands of kilometers (e.g., samples 2 and 14) in the deep ocean are more similar in composition than communities separated by just a few meters in depth but residing in different water layers (e.g., samples 9 and 10). These findings support a growing understanding that the major discontinuities in the ocean are related to the physicochemical properties that form the different water

**BGD**

9, 109–150, 2012

## Atlantic Ocean microbial diversity

C. J. Friedline et al.

Title Page

Abstract

Introduction

Conclusions

References

Tables

Figures

◀

▶

◀

▶

Back

Close

Full Screen / Esc

Printer-friendly Version

Interactive Discussion



masses. These previous results were obtained using PCoA and Mantel tests, which are both based on an initial calculation of a similarity (or distance) matrix that fundamentally reduces a dataset into a single numerical value relating each pair of samples. In our study, the original OTU data exist as a matrix of 16 samples with 2871 values per sample (i.e., the abundance of each of the 2871 OTUs), yielding a total of 44 496 experimental observations. The first step for both the PCoA and the Mantel test is to reduce this information to a mere 136 values (a single number for each pair of samples). Though valuable in their power to distill large and complex datasets, these approaches simply cannot maintain the full information potential of our original data, and ecologically valuable information may be lost. The Spearman correlation analysis of the OTUs with the PCoA ordination (Table 4) revealed that both abundant and less abundant OTUs were drivers of the spatial separation of the eubacterial communities; this suggested to us that using the full information content of the data matrix, instead of just the pairwise distance between the samples, might provide enhanced discriminating power and allow us to explore ecologically-relevant patterns nested within our depth-defined habitats. With this goal in mind, we designed an analysis strategy not previously used to our knowledge in this type of study. By applying Bayesian inference (BI) of tree topology to the full matrix of OTU abundance, we were able to test all the possible tree topologies relating our samples, and to identify the optimal tree topology that best explains the relationships based on overall patterns of OTU abundance (Fig. 6). The inferred tree topology resolves four interesting clades or groups of samples, labelled by their common nodes (A, B, C, and D). The three samples from the Southern Hemisphere (6, 14, and 16) form a well-supported clade (Fig. 6, node D). This Southern Hemisphere clade includes DCM-zone samples from the BENG and the SATL ecological provinces separated by a surface distance of 868 km (6 and 16) and by a depth of over 4600 m (14 and 16). The samples within the Northern Hemisphere are arranged into three major clades (Fig. 6, nodes A, B, and C); showing a more complex pattern of relationships that seems to be determined by both common habitat and geographic separation. Samples from the Northern Hemisphere DCM-zone form a well-defined

**Atlantic Ocean  
microbial diversity**

C. J. Friedline et al.

[Title Page](#)[Abstract](#)[Introduction](#)[Conclusions](#)[References](#)[Tables](#)[Figures](#)[◀](#)[▶](#)[◀](#)[▶](#)[Back](#)[Close](#)[Full Screen / Esc](#)[Printer-friendly Version](#)[Interactive Discussion](#)

group (Fig. 6, node A), to the exclusion of samples from the same geographical region but different depths profiles. Clade B is a well-supported group including three aphotic zone samples (2, 8, and 11). This is an interesting group as it includes samples separated by ~3000 km and from two different provinces (NASE and WTRA), but with the unifying characteristic of having been collected from within the central water mass. Sample 2 was collected at a depth of 1100 m and a temperature of 10.77 degrees from within the NACW with EMW influence west of the Iberian Peninsula; samples 8 and 11 were collected at depths of 100 and 200 m, respectively, from within the SACW mass. This cluster shows that sample 2 has a community composition more similar to samples 8 and 11 with temperatures of 15.3 and 12.8 °C, respectively, than to samples from similar depths, like sample 12 (1300 m) but a colder temperature. Martin-Cuadrado and collaborators (2007) observed similar results when analyzing EMW bathypelagic samples. The deep Mediterranean communities were similar to deep communities from the Pacific, but they were more closely related to Pacific mesopelagic communities than to other bathypelagic communities, suggesting temperature as the major driving factor.

Finally, clade C is composed of five samples from two different provinces, NATR and WTRA, all of them collected within a maximum surface distance of 670 km from each other and at depths ranging for 2–1300 m. In this cluster, samples from the same depth (2 m) but different provinces (7 and 5) have less similar community composition than samples from different depths but within the same province (7, 10, 12, and 13). This analysis may suggest the province signal is not restricted to the surface communities, but can be conveyed to the communities of the deep ocean, particularly in the case of samples 12 and 14. Analysis of a larger number of samples is necessary to further explore this possibility, although other studies from the same cruise observed similar trend (Taylor et al., 2011).

To further investigate the biogeography effect without the confounding signal from the deep-water communities, the same analysis was performed using only the samples from the photic zone (Fig. 6, bottom). This tree topology clearly shows the photic zone communities separated into two groups based on the water layer, DCM and surface.

**BGD**

9, 109–150, 2012

## Atlantic Ocean microbial diversity

C. J. Friedline et al.

Title Page

Abstract

Introduction

Conclusions

References

Tables

Figures

◀

▶

◀

▶

Back

Close

Full Screen / Esc

Printer-friendly Version

Interactive Discussion



Within those two major groups, the communities are separated by geographical distance following a north-south gradient; this pattern is better observed among the communities from the DCM zone where a larger and more diverse set of samples was obtained.

Collectively, our results suggests that eastern Atlantic Ocean eubacterial assemblages are vertically stratified by similar water layer (habitat). Within the same water layer the separation of the communities appears to show a significant geographical distance effect. In general, the Bayesian inference approach appears to provide the finer resolution power needed to separate the communities by environment and geographical province, even with this small sample size, further confirmation of these observations will require a comprehensive analysis including many more samples and other ocean basins.

#### 4 Conclusions

Our study provides a comprehensive picture of the composition of eubacterial assemblages along the eastern Atlantic Ocean using high-throughput pyrosequencing of PCR-amplified 16s rDNA. The application of community ecology statistics to OTU data leads us to conclude that eubacterial assemblages show a biogeographical separation based on their position in the water column (surface, DCM, and deep). A novel Bayesian inference approach further extracted information from the community composition and suggested both a vertical and latitudinal separation of the eubacterial assemblages. The stratification patterns are driven not only by the most abundant OTUs, but also by less abundant OTUs, suggesting that rare taxa contribute to the unique character of the community and are important biogeographical markers. In general, the distribution patterns of the eubacterial assemblages were congruent with the Longhurst ecological provinces. A more extensive sampling will be required in order to fully assess the impact of the ecological provinces on the distribution and diversity of eubacterial communities.

**BGD**

9, 109–150, 2012

### Atlantic Ocean microbial diversity

C. J. Friedline et al.

Title Page

Abstract

Introduction

Conclusions

References

Tables

Figures

◀

▶

◀

▶

Back

Close

Full Screen / Esc

Printer-friendly Version

Interactive Discussion





*Acknowledgements.* We would like to thank Amy Jenkins for her participation in the cruise as well as sample collection and processing, and Hyeon J. Lee for her help in data compilation. We are also grateful to the staff at Marine Biological Laboratory for providing sequencing, data access, and visualization using the VAMPS platform. Pyrosequencing was supported  
5 by a Keck foundation grant to M. Sogin and L. Amaral Zettler. This is a contribution to the International Census of Marine Microbes (ICoMM). We thank the staff and scientists of the R/V Polarstern cruise ANTXXV-1 for the opportunity to collect these samples and their technical support during and after the cruise.

*Author contributions* C. J. F. and M. C. R. designed research; C. J. F. performed all bioinformatics work; R. B. F. performed molecular biology; S. L. M. performed samples collection; C. J. F., R. B. F., and M. C. R. analyzed data; and C. J. F., R. B. F., S. L. M. and M. C. R. wrote the paper.

## References

- 15 Agogue, H., Lamy, D., Neal, P. R., Sogin, M. L., and Herndl, G. J.: Water mass-specificity of bacterial communities in the North Atlantic revealed by massively parallel sequencing, *Mol. Ecol.*, 20, 258–274, 2011. 112, 122, 125, 128, 129
- Altschul, S., Gish, W., Miller, W., Myers, E., and Lipman, D.: Basic local alignment search tool, *J. Mol. Bio.*, 215, 403–410, 1990. 116
- 20 Aristegui, J., Barton, E. D., Alvarez-Salgado, X. A., Santos, A. M. P., Figueiras, F. G., Kifani, S., Hernández-León, S., Mason, E., Machú, E., and Demarcq, H.: Sub-regional ecosystem variability in the Canary Current upwelling, *Progr. Oceanogr.*, 83, 33–48, 2009. 121
- Azam, F., Fenchel, T., Field, J., Gray, J., Meyerreil, L., and Thingstad, F.: The ecological role of water-column microbes in the sea, *Mar. Ecol.-Prog. Ser.*, 10, 257–263, 1983. 111
- 25 Baltar, F., Aristegui, J., Gasol, J., and Sintes, E.: Evidence of prokaryotic metabolism on suspended particulate organic matter in the dark waters of the subtropical North Atlantic, *Limnol. Oceanogr.*, 2009. 128
- Bochdansky, A. B., van Aken, H. M., and Herndl, G. J.: Role of macroscopic particles in deep-sea oxygen consumption., *P. Natl. Acad. Sci. USA*, 107, 8287–8291, 2010. 128
- 30 Breitbart, M., Salamon, P., Andresen, B., Mahaffy, J., Segall, A., Mead, D., Azam, F., and

**BGD**

9, 109–150, 2012

## Atlantic Ocean microbial diversity

C. J. Friedline et al.

Title Page

Abstract

Introduction

Conclusions

References

Tables

Figures

◀

▶

◀

▶

Back

Close

Full Screen / Esc

Printer-friendly Version

Interactive Discussion



- Rohwer, F.: Genomic analysis of uncultured marine viral communities, *P. Natl. Acad. Sci. USA*, 99, 14250–14255, 2002. 112
- Bunge, J.: Estimating the number of species with CatchAll, *Pacific Symposium on Biocomputing*, 2011. 117
- 5 Carlson, C. A., Giovannoni, S. J., Hansell, D., Goldberg, S., Parsons, R., Otero, M., Vergin, K. L., and Wheeler, B.: Effect of nutrient amendments on bacterioplankton production, community structure, and DOC utilization in the northwestern Sargasso Sea, *Aquat. Microb. Ecol.*, 30, 19–36, 2002. 124
- Cases, I. and de Lorenzo, V.: The grammar of (micro)biological diversity, *Environ. Microbiol.*, 4, 623–627, 2002. 112
- 10 Chao, A.: Nonparametric-estimation of the number of classes in a population, *Scand. J. Stat.*, 11, 265–270, 1984. 117
- Chao, A. and Lee, S.: Estimating the number of classes via sample coverage, *J. Am. Stat. Assoc.*, 210–217, 1992. 117
- 15 Claesson, M. J., O'sullivan, O., Wang, Q., Nikkila, J., Marchesi, J. R., Smidt, H., Vos, W. M. D., Ross, R. P., and O'Toole, P. W.: Comparative analysis of pyrosequencing and a phylogenetic microarray for exploring microbial community structures in the human distal intestine, *PLoS One*, 4, 2009. 116
- Clarke, K.: Nonparametric multivariate analyses of changes in community structure, *Aust. J. Ecol.*, 18, 117–143, 1993. 117
- 20 del Giorgio, P. and Duarte, C.: Respiration in the open ocean, *Nature*, 420, 379–384, 2002. 111
- DeLong, E. F.: The microbial ocean from genomes to biomes, *Nature*, 459, 200–206, 2009. 129
- 25 Ducklow, H. W.: Biogeochemical Provinces: Towards a JGOFS Synthesis, in: *Ocean Biogeochemistry*, edited by: Fasham, M. J. R., *Global Change The IGBP Series (closed)*, 3–17, Springer Berlin Heidelberg, 2003. 129
- Eiler, A., Langenheder, S., Bertilsson, S., and Tranvik, L. J.: Heterotrophic bacterial growth efficiency and community structure at different natural organic carbon concentrations., *Appl. Environ. Microbiol.*, 69, 3701–3709, 2003. 128
- 30 Fuhrman, J. and Azam, F.: Thymidine incorporation as a measure of heterotrophic bacterioplankton production in marine surface waters – evaluation and field results, *Mar. Biol.*, 66, 109–120, 1982. 111

---

**Atlantic Ocean  
microbial diversity**C. J. Friedline et al.

---

[Title Page](#)[Abstract](#)[Introduction](#)[Conclusions](#)[References](#)[Tables](#)[Figures](#)[◀](#)[▶](#)[◀](#)[▶](#)[Back](#)[Close](#)[Full Screen / Esc](#)[Printer-friendly Version](#)[Interactive Discussion](#)

**Atlantic Ocean  
microbial diversity**

C. J. Friedline et al.

Title Page

Abstract

Introduction

Conclusions

References

Tables

Figures

◀

▶

◀

▶

Back

Close

Full Screen / Esc

Printer-friendly Version

Interactive Discussion



- Fuhrman, J. and Campbell, L.: Marine ecology – microbial microdiversity, *Nature*, 393, 410–411, 1998. 111
- Fuhrman, J. A.: Microbial community structure and its functional implications, *Nature*, 459, 193–199, 2009. 129
- 5 Fuhrman, J. A. and Davis, A.: Widespread Archaea and novel Bacteria from the deep sea as shown by 16S rRNA gene sequences, *Marine Ecol.-Prog. Ser.*, 150, 275–285, 1997. 128
- Fuhrman, J. A., Steele, J. A., Hewson, I., Schwalbach, M. S., Brown, M. V., Green, J. L., and Brown, J. H.: A latitudinal diversity gradient in planktonic marine bacteria, *P. Natl. Acad. Sci. USA*, 105, 7774–7778, 2008. 123
- 10 Galand, P. E., Casamayor, E. O., Kirchman, D. L., Potvin, M., and Lovejoy, C.: Unique archaeal assemblages in the Arctic Ocean unveiled by massively parallel tag sequencing, *The ISME Journal*, 3, 860–869, 2009a. 112, 113
- Galand, P. E., Potvin, M., Casamayor, E. O., and Lovejoy, C.: Hydrography shapes bacterial biogeography of the deep Arctic Ocean, *The ISME Journal*, 4, 564–576, 2009b. 129
- 15 Gasol, J. and del Giorgio, P.: Using flow cytometry for counting natural planktonic bacteria and understanding the structure of planktonic bacterial communities, in: *Scientia Marina*, pp. 197–224, CSIC, Inst Ciencias Mar, Dept Biol Marina & Oceanog, E-08039 Barcelona, Spain, 2000. 111
- Gilbert, J. A., Field, D., Swift, P., Newbold, L., Oliver, A., Smyth, T., Somerfield, P. J., Huse, S., and Joint, I.: The seasonal structure of microbial communities in the Western English Channel, *Environ. Microbiol.*, 11, 3132–3139, 2009. 112
- 20 Giovannoni, S. J. and Stingl, U.: Molecular diversity and ecology of microbial plankton, *Nature*, 437, 343–348, 2005. 112, 129
- Giovannoni, S. J., Rappé, M. S., Vergin, K. L., and Adair, N.: 16S rRNA genes reveal stratified open ocean bacterioplankton populations related to the Green Non-Sulfur bacteria, *P. Natl. Acad. Sci. USA*, 93, 7979–7984, 1996. 128
- 25 Gordon, D. A. and Giovannoni, S. J.: Detection of stratified microbial populations related to *Chlorobium* and *Fibrobacter* species in the Atlantic and Pacific oceans., *Appl. Environ. Microbiol.*, 62, 1171–1177, 1996. 128
- 30 Gower, J.: General coefficient of similarity and some of its properties, *Biometrics*, 27, 857–874, 1971. 118
- Hammer, Ø. and Harper, D.: PAST: paleontological statistics software package for education and data analysis, *Palaeontol. Electron.*, 9 pp., 2001. 118

**Atlantic Ocean  
microbial diversity**

C. J. Friedline et al.

Title Page

Abstract

Introduction

Conclusions

References

Tables

Figures

◀

▶

◀

▶

Back

Close

Full Screen / Esc

Printer-friendly Version

Interactive Discussion



- Hewson, I., Steele, J., Capone, D., and Fuhrman, J. A.: Remarkable heterogeneity in meso- and bathypelagic bacterioplankton assemblage composition, *Limnol. Oceanogr.*, 51, 1274–1283, 2006. 113, 125
- Hewson, I., Paerl, R. W., Tripp, H. J., Zehr, J. P., and Karl, D. M.: Metagenomic potential of microbial assemblages in the surface waters of the central Pacific Ocean tracks variability in oceanic habitat, *Limnol. Oceanogr.*, 54, 1981–1994, 2009. 112, 129
- Hobbie, J. E., Daley, R. J., and Jasper, S.: Use of nuclepore filters for counting bacteria by fluorescence microscopy., *Appl. Environ. Microbiol.*, 33, 1225–1228, 1977. 111
- Huber, J. A., Welch, D. M., Morrison, H. G., Huse, S. M., Neal, P. R., Butterfield, D. A., and Sogin, M. L.: Microbial population structures in the deep marine biosphere, *Science*, 318, 97–100, 2007. 112, 115
- Huelsenbeck, J. and Ronquist, F.: MRBAYES: Bayesian inference of phylogenetic trees, *Bioinformatics*, 17, 754–755, 2001. 120
- Huse, S. M., Huber, J. A., Morrison, H. G., Sogin, M. L., and Welch, D. M.: Accuracy and quality of massively parallel DNA pyrosequencing, *Genome Biology*, 8, R143, 2007. 115
- Huse, S. M., Dethlefsen, L., Huber, J. A., Welch, D. M., Relman, D. A., and Sogin, M. L.: Exploring microbial diversity and taxonomy using SSU rRNA yypervariable tag sequencing, *PLoS Genetics*, 4, e1000255, 2008. 115
- Huse, S. M., Welch, D. M., Morrison, H. G., and Sogin, M. L.: Ironing out the wrinkles in the rare biosphere through improved OTU clustering, *Environ. Microbiol.*, 12, 1889–1898, 2010. 115, 116
- Kerkhof, L., Voytek, M., Sherrell, R., Millie, D., and Schofield, O.: Variability in bacterial community structure during upwelling in the coastal ocean, *Hydrobiologia*, 401, 139–148, 1999. 127
- Kirchman, D. L., Cottrell, M. T., and Lovejoy, C.: The structure of bacterial communities in the western Arctic Ocean as revealed by pyrosequencing of 16S rRNA genes, *Environ. Microbiol.*, 12, 1132–1143, 2010. 112
- Kunin, V., Engelbrekton, A., Ochman, H., and Hugenholtz, P.: Wrinkles in the rare biosphere: pyrosequencing errors can lead to artificial inflation of diversity estimates., *Environ. Microbiol.*, 12, 118–123, 2010. 121
- Longhurst, A.: *Ecological geography of the sea.*, Academic Press, San Diego, London etc., 1998. 113
- Longhurst, A., Sathyendranath, S., Platt, T., and Caverhill, C.: An estimate of global primary

## Atlantic Ocean microbial diversity

C. J. Friedline et al.

Title Page

Abstract

Introduction

Conclusions

References

Tables

Figures

◀

▶

◀

▶

Back

Close

Full Screen / Esc

Printer-friendly Version

Interactive Discussion



production in the ocean from satellite radiometer data, *J. Plankton Res.*, 17, 1245–1271, 1995. 126

Martín-Cuadrado, A.-B., López-García, P., Alba, J.-C., Moreira, D., Monticelli, L., Strittmatter, A., Gottschalk, G., and Rodríguez-Valera, F.: Metagenomics of the deep Mediterranean, a warm bathypelagic habitat, *PLoS One*, 2, 2007. 125, 131

Martiny, A. C., Coleman, M. L., and Chisholm, S. W.: Phosphate acquisition genes in *Prochlorococcus* ecotypes: Evidence for genome-wide adaptation, *P. Natl. Acad. Sci. USA*, 103, 12552–12557, 2006. 129

Martiny, A. C., Tai, A. P. K., Veneziano, D., Primeau, F., and Chisholm, S. W.: Taxonomic resolution, ecotypes and the biogeography of *Prochlorococcus*, *Environ. Microbiol.*, 11, 823–832, 2009. 129

Massana, R., Karniol, B., Pommier, T., Bodaker, I., and Beja, O.: Metagenomic retrieval of a ribosomal DNA repeat array from an uncultured marine alveolate, *Environ. Microbiol.*, 10, 1335–1343, 2008. 112

Nagata, T., Fukuda, H., Fukuda, R., and Koike, I.: Bacterioplankton distribution and production in deep Pacific waters: Large-scale geographic variations and possible coupling with sinking particle fluxes, *Limnol. Oceanogr.*, 45, 426–435, 2000. 125

Pinhassi, J., Winding, A., Binnerup, S., Zweifel, U., Riemann, B., and Hagstrom, A.: Spatial variability in bacterioplankton community composition at the Skagerrak-Kattegat Front, *Mar. Ecol.-Progr. Ser.*, 255, 1–13, 2003. 127

Pinhassi, J., Sala, M. M., Havskum, H., Peters, F., Guadayol, O., Malits, A., and Marrase, C.: Changes in bacterioplankton composition under different phytoplankton regimens, *Appl. Environ. Microbiol.*, 70, 6753, 2004. 127

Pohl, C., Croot, P., Hennings, U., Daberkow, T., Budeus, G., and Loeff, M.: Synoptic transects on the distribution of trace elements (Hg, Pb, Cd, Cu, Ni, Zn, Co, Mn, Fe, and Al) in surface waters of the Northern and Southern East Atlantic, *J. Mar. Syst.*, 84, 28–41, 2011. 123, 127

Pommier, T., Canbäck, B., Riemann, L., Boström, K. H., Simu, K., Lundberg, P., Tunlid, A., and Hagstrom, A.: Global patterns of diversity and community structure in marine bacterioplankton, *Mol. Ecol.*, 16, 867–880, 2006. 129

Quince, C., Curtis, T. P., and Sloan, W. T.: The rational exploration of microbial diversity, *The ISME Journal*, 2, 997–1006, 2008. 121

Reinthal, T., van Aken, H. M., and Herndl, G. J.: Major contribution of autotrophy to microbial carbon cycling in the deep North Atlantic interior, *Deep-Sea Res. Pt II*, 57, 1572–1580,

## Atlantic Ocean microbial diversity

C. J. Friedline et al.

Title Page

Abstract

Introduction

Conclusions

References

Tables

Figures

◀

▶

◀

▶

Back

Close

Full Screen / Esc

Printer-friendly Version

Interactive Discussion



2010. 125

Reeder, J. and Knight, R.: The ‘rare biosphere’: a reality check, *Nat. Methods*, 6, 636–637, 2009. 121

Roesch, L. F., Fulthorpe, R. R., Riva, A., Casella, G., Hadwin, A. K. M., Kent, A. D., Daroub, S. H., Camargo, F. A. O., Farmerie, W. G., and Triplett, E. W.: Pyrosequencing enumerates and contrasts soil microbial diversity, *The ISME Journal*, 1, 283–290, 2007. 112

Rossi, J.: Statistical tool for soil biology: Autocorrelogram and Mantel test, *Eur. J. Soil Biol.*, 32, 195–203, 1996. 117

Rusch, D. B., Halpern, A. L., Sutton, G., Heidelberg, K. B., Williamson, S., Yooseph, S., Wu, D., Eisen, J. A., Hoffman, J. M., Remington, K., Beeson, K., Tran, B., Smith, H., Baden-Tillson, H., Stewart, C., Thorpe, J., Freeman, J., Andrews-Pfannkoch, C., Venter, J. E., Li, K., Kravitz, S., Heidelberg, J. F., Utterback, T., Rogers, Y.-H., Falcon, L. I., Souza, V., Bonilla-Rosso, G., Eguarte, L. E., Karl, D. M., Sathyendranath, S., Platt, T., Bermingham, E., Gallardo, V., Tamayo-Castillo, G., Ferrari, M. R., Strausberg, R. L., Nealson, K., Friedman, R., Frazier, M., and Venter, J. C.: The Sorcerer II global ocean sampling expedition: northwest Atlantic through eastern tropical Pacific, *PLoS Biology*, 5, 398–431, 2007. 112, 114

Schattenhofer, M., Fuchs, B. M., Amann, R., Zubkov, M. V., Tarran, G. A., and Pernthaler, J.: Latitudinal distribution of prokaryotic picoplankton populations in the Atlantic Ocean, *Environ. Microbiol.*, 11, 2078–2093, 2009. 129

Schlitzer, R.: Ocean Data View, <http://odv.awi.de>, 2011. 145

Schloss, P. D.: A high-throughput DNA sequence aligner for microbial ecology studies, *PLoS One*, 4, 2009. 116

Schloss, P. D., Westcott, S. L., Ryabin, T., Hall, J. R., Hartmann, M., Hollister, E. B., Lesniewski, R. A., Oakley, B. B., Parks, D. H., Robinson, C. J., Sahl, J. W., Stres, B., Thallinger, G. G., van Horn, D. J., and Weber, C. F.: Introducing mothur: open-source, platform-independent, community-supported software for describing and comparing microbial communities, *Appl. Environ. Microbiol.*, 75, 7537–7541, 2009. 115

Smouse, P., Long, J., and Sokal, R.: Multiple-regression and correlation extensions of the mantel test of matrix correspondence, *Syst. Zool.*, 35, 627–632, 1986. 117

Sneath, P. H. A.: Numerical Taxonomy: The Principles and Practice of Numerical Classification (A Series of books in biology), W. H. Freeman & Co (Sd), 1973. 118, 119

Sogin, M. L., Morrison, H. G., Huber, J. A., Welch, D. M., Huse, S. M., Neal, P. R., Arrieta, J. M., and Herndl, G. J.: Microbial diversity in the deep sea and the underexplored “rare

biosphere”, P. Natl. Acad. Sci. USA, 103, 12115–12120, 2006. 112, 125

Stott, J.: Jcoord, version 1,0, <http://www.jstott.me.uk/jcoord>, 2011. 118

Taylor, B. B., Torrecilla, E., Bernhardt, A., Taylor, M. H., Peeken, I., Röttgers, R., Piera, J., and Bracher, A.: Bio-optical provinces in the eastern Atlantic Ocean and their biogeographical relevance, *Biogeosciences*, 8, 3609–3629, 2011, <http://www.biogeosciences.net/8/3609/2011/>. 120, 127, 131

Thiele, K.: The holy grail of the perfect character: the cladistic treatment of morphometric data, *Cladistics*, 9, 275–304, 1993. 119

Treusch, A. H., Vergin, K. L., Finlay, L. A., Donatz, M. G., Burton, R. M., Carlson, C. A., and Giovannoni, S. J.: Seasonality and vertical structure of microbial communities in an ocean gyre, *The ISME Journal*, 3, 1148–1163, 2009. 123, 127

Van Hannen, E., Zwart, G., Van Agterveld, M., Gons, H., Ebert, J., and Laanbroek, H.: Changes in bacterial and eukaryotic community structure after mass lysis of filamentous cyanobacteria associated with viruses, *Appl. Environ. Microbiol.*, 65, 795–801, 1999. 128

Varela, M. M., van Aken, H. M., Sintes, E., and Herndl, G. J.: Latitudinal trends of Crenarchaeota and Bacteria in the meso- and bathypelagic water masses of the Eastern North Atlantic, *Environ. Microbiol.*, 10, 110–124, 2007. 129

Venter, J., Remington, K., Heidelberg, J., Halpern, A., Rusch, D., Eisen, J., Wu, D., Paulsen, I., Nelson, K., Nelson, W., Fouts, D., Levy, S., Knap, A., Lomas, M., Neelson, K., White, O., Peterson, J., Hoffman, J., Parsons, R., Baden-Tillson, H., Pfannkoch, C., Rogers, Y., and Smith, H.: Environmental genome shotgun sequencing of the Sargasso Sea, *Science*, 304, 66–74, 2004. 112

VLIZ: Longhurst Biogeographical Provinces, <http://www.vliz.be/vmdcdata/vlimar/downloads.php>, 2009. 145

Wang, Q., Garrity, G. M., Tiedje, J. M., and Cole, J. R.: Naive Bayesian classifier for rapid assignment of rRNA sequences into the new bacterial taxonomy, *Appl. Environ. Microbiol.*, 73, 5261–5267, 2007. 116

West, N. J., Obernosterer, I., Zemb, O., and Lebaron, P.: Major differences of bacterial diversity and activity inside and outside of a natural iron-fertilized phytoplankton bloom in the Southern Ocean, *Environ. Microbiol.*, 10, 738–756, 2008. 124

Wietz, M., Gram, L., and Jørgensen, B. B.: Latitudinal patterns in the abundance of major marine bacterioplankton groups, *Aquat. Microb. Ecol.*, 2010. 129

Wright, T. D., Vergin, K. L., Boyd, P. W., and Giovannoni, S. J.: A novel delta-subdivision

**BGD**

9, 109–150, 2012

## Atlantic Ocean microbial diversity

C. J. Friedline et al.

Title Page

Abstract

Introduction

Conclusions

References

Tables

Figures

◀

▶

◀

▶

Back

Close

Full Screen / Esc

Printer-friendly Version

Interactive Discussion



proteobacterial lineage from the lower ocean surface layer., Appl. Environ. Microbiol., 63, 1441–1448, 1997. 128

Xie, Z., Koch, B. P., Möller, A., Sturm, R., and Ebinghaus, R.: Transport and fate of hexachlorocyclohexanes in the oceanic air and surface seawater, Biogeosciences, 8, 2621–2633, doi:10.5194/bg-8-2621-2011, 2011. 123

Yokokawa, T., De Corte, D., Sintès, E., and Herndl, G. J.: Spatial patterns of bacterial abundance, activity and community composition in relation to water masses in the eastern Mediterranean Sea, Aquat. Microb. Ecol., 59, 185–195, 2010. 113, 129

**BGD**

9, 109–150, 2012

## Atlantic Ocean microbial diversity

C. J. Friedline et al.

Title Page

Abstract

Introduction

Conclusions

References

Tables

Figures

◀

▶

◀

▶

Back

Close

Full Screen / Esc

Printer-friendly Version

Interactive Discussion





**Atlantic Ocean  
microbial diversity**

C. J. Friedline et al.

Title Page

Abstract Introduction

Conclusions References

Tables Figures

◀ ▶

◀ ▶

Back Close

Full Screen / Esc

Printer-friendly Version

Interactive Discussion

**Table 1.** Sequencing statistics and OTU richness estimates for 16 eubacterial communities along the eastern Atlantic Ocean. The statistical estimates of the total OTU richness of each sampled community were determined from the observed OTUs using the CatchAll parametric estimator and the non-parametric estimators Chao1 and ACE; all implemented in CatchAll V3.0. NS = Non-singletons, the remaining reads after the removal of reads present only once (singletons). SD = standard deviation. SE = standard error.

	Mean/sample	SD	Range
Total NS reads	16,079	7,374	6687–36 569
NS read length	62	3	51–74
NS GC %	47	5	18–67
Total unique reads	628	270	225–1271
Total singleton reads	408	163	182–864
Total OTUs at 3 %	721	193	446–1157
	Mean/sample (SD)	SE (SD)	Range
CatchAll	1979 (1737)	508 (738)	521–7295
Chao1	994 (503)	91 (62)	432–2619
ACE	1400 (933)	155 (117)	466–4507



## Atlantic Ocean microbial diversity

C. J. Friedline et al.

**Table 2.** Taxonomic affiliation of the 25 most abundant Operational Taxonomic Units (OTUs) across all 16 Atlantic Ocean microbial communities sampled. The table shows the total normalized abundance of the particular OTU, its proportion, and distribution. The taxonomy is shown at the rank with the highest assignment confidence. The numerical identifier of each OTU is shown in parentheses to differentiate OTUs with identical taxonomic labels.

Taxa (OTU)	<i>n</i>	Percent	Mean (SD)	Range
<i>Pelagibacter</i> (31)	9615	9.0	601 (249)	177–1014
<i>Pelagibacter</i> (24)	9188	8.6	574 (317)	187–1226
<i>Gp11a</i> (282)	4606	4.3	288 (365)	4–1,021
<i>Alteromonas</i> (2602)	2987	2.8	187 (297)	6–1115
Proteobacteria (3151)	2505	2.3	157 (112)	8–338
<i>Gp11a</i> (2949)	2256	2.1	141 (218)	1–844
Proteobacteria (928)	1621	1.5	101 (144)	0–437
Bacteria (273)	1460	1.4	91 (162)	0–626
<i>Pelagibacter</i> (63)	1439	1.3	90 (88)	3–266
Gammaproteobacteria (367)	1417	1.3	89 (84)	17–364
<i>Marinobacter</i> (467)	1368	1.3	86 (144)	0–426
Proteobacteria (3026)	1357	1.3	85 (81)	1–248
<i>Pelagibacter</i> (127)	1335	1.3	83 (112)	2–307
<i>Pelagibacter</i> (45)	1297	1.2	81 (72)	1–240
<i>Chlorophyta</i> (1015)	1239	1.2	77 (256)	0–1,021
Rhodobacteraceae (110)	1187	1.1	74 (80)	4–291
<i>Gp11a</i> (286)	1164	1.1	73 (171)	1–703
<i>Gaetbulibacter</i> (3178)	1118	1.0	70 (32)	26–131
Actinobacteria (496)	1043	1.0	65 (102)	0–299
Alphaproteobacteria (41)	1041	1.0	65 (42)	9–159
<i>Alcanivorax</i> (206)	978	0.9	61 (99)	0–335
<i>Pseudoalteromonas</i> (1556)	976	0.9	61 (79)	3–261
<i>Thalassobius</i> (113)	974	0.9	61 (92)	0–377
Bacteria (179)	971	0.9	61 (76)	1–224
Alphaproteobacteria (168)	964	0.9	60 (43)	3–136

Title Page

Abstract

Introduction

Conclusions

References

Tables

Figures

I◀

▶I

◀

▶

Back

Close

Full Screen / Esc

Printer-friendly Version

Interactive Discussion



Atlantic Ocean  
microbial diversity

C. J. Friedline et al.

**Table 3.** Significant relationships between environmental variables and Principal Coordinate Analysis (PCoA) ordination shown with number of available data points ( $n$ ), Spearman correlations ( $r_s$ ), and significance value ( $p$ ). No significant correlations between environment and coordinate 3 were found.

Coordinate	Env. variable	$n$	$r_s$	$p$
1	PO <sub>4</sub> <sup>3-</sup>	15	0.82	0.000
	NO <sub>3</sub> <sup>-</sup>	15	0.81	0.000
	Depth(log)	16	0.73	0.001
	Si	15	0.59	0.021
	DOC	14	-0.85	0.000
	Temperature	16	-0.82	0.000
	DON	14	-0.67	0.009
2	NO <sub>2</sub> <sup>-</sup>	15	-0.76	0.001
	Chl- <i>a</i>	15	-0.68	0.005
	Salinity	16	-0.55	0.027

Title Page

Abstract

Introduction

Conclusions

References

Tables

Figures

I◀

▶I

◀

▶

Back

Close

Full Screen / Esc

Printer-friendly Version

Interactive Discussion



**Table 4.** Top 10 correlated (Spearman,  $r_s$ ) OTUs with Principal Coordinate Analysis (PCoA) ordination of 16 samples with 2871 OTUs. Counts ( $n$ ) are normalized read abundance and OTU ID is shown in parentheses to differentiate OTUs with identical taxonomic labels.

Coordinate	Taxa (OTU)	$n$	$r_s(PCoA)$
1	<i>Francisella</i> (509)	533	0.90
	Actinobacteria (496)	1043	0.86
	Proteobacteria (934)	55	0.83
	Vibrionaceae (1166)	93	0.81
	Alphaproteobacteria (1301)	138	0.81
	<i>Pelagibacter</i> (24)	9188	0.79
	Bacteria (1293)	56	0.78
	Proteobacteria (1204)	301	0.77
	Actinobacteria (493)	474	0.76
	Proteobacteria (928)	1621	0.75
2	<i>Porphyrobacter</i> (1678)	33	0.79
	Bacteria (2272)	76	0.75
	Actinobacteria (2111)	29	0.74
	Gammaproteobacteria (2241)	86	0.74
	<i>Marichromatium</i> (2244)	25	0.74
	Bacteria (2269)	18	0.73
	Proteobacteria (2532)	6	0.73
	<i>Pelagibacter</i> (2607)	6	0.73
	<i>Colwellia</i> (2192)	30	0.73
	Actinomycetales (2215)	6	0.73
3	<i>Gp11a</i> (287)	247	0.87
	<i>Gp11a</i> (286)	1164	0.74
	Bacteria (464)	54	0.74
	Rhodobacteraceae (97)	5	0.72
	Proteobacteria (452)	23	0.71
	Bacteria (390)	10	0.70
	<i>Maricaulis</i> (380)	21	0.70
	<i>Shimia</i> (93)	34	0.68
	Rhodobacteraceae (95)	17	0.68
	Proteobacteria (141)	3	0.68

**Atlantic Ocean  
microbial diversity**

C. J. Friedline et al.

Title Page

Abstract Introduction

Conclusions References

Tables Figures

◀ ▶

◀ ▶

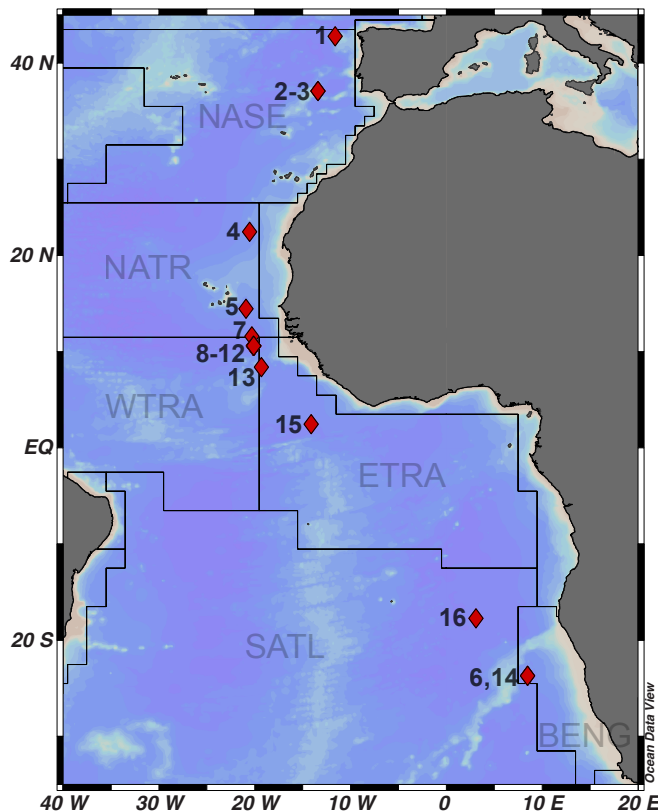
Back Close

Full Screen / Esc

Printer-friendly Version

Interactive Discussion





**Fig. 1.** Collection locations of 16 water samples analysed in this study. Figure created with Ocean Data View (Schlitzer, 2011) with shape file overlay from VLIZ (2009).

**Atlantic Ocean  
microbial diversity**

C. J. Friedline et al.

Title Page

Abstract

Introduction

Conclusions

References

Tables

Figures

◀

▶

◀

▶

Back

Close

Full Screen / Esc

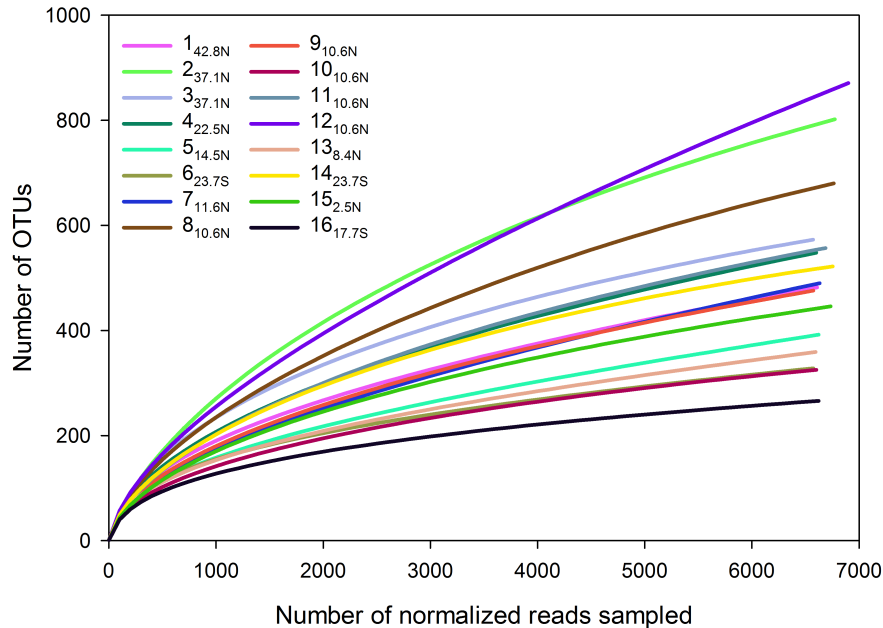
Printer-friendly Version

Interactive Discussion



Atlantic Ocean  
microbial diversity

C. J. Friedline et al.



**Fig. 2.** Rarefaction analysis for the 16 samples from the eastern Atlantic Ocean. The curves were obtained by resampling the normalized sequence reads using the rarefaction.single function from mothur, and plotted as the number of operational taxonomic units (OTUs) versus the number of normalized sequence reads sampled. An OTU is composed of a set of sequences with a similarity equal to or greater than 97%. Each line corresponds to a different sample (1–16) with the latitude of the sampling location as a subscript in the legend.

Title Page

Abstract

Introduction

Conclusions

References

Tables

Figures

◀

▶

◀

▶

Back

Close

Full Screen / Esc

Printer-friendly Version

Interactive Discussion



Atlantic Ocean  
microbial diversity

C. J. Friedline et al.



**Fig. 3.** Relative abundance and affiliation of the 72 eubacterial taxonomic families identified in this study with > 50 % RDP classifier bootstrap support. A total of 962 OTUs (34 %) were assigned taxonomy to the family level, representing 58 % of the total read abundance. The size of the bars represents the proportion of the particular family in a sample. Incertae sedis is denoted as “i\_s”. Each color corresponds to a different sample (1–16) with the latitude of the sampling location as a subscript in the legend.

Title Page

Abstract

Introduction

Conclusions

References

Tables

Figures

◀

▶

◀

▶

Back

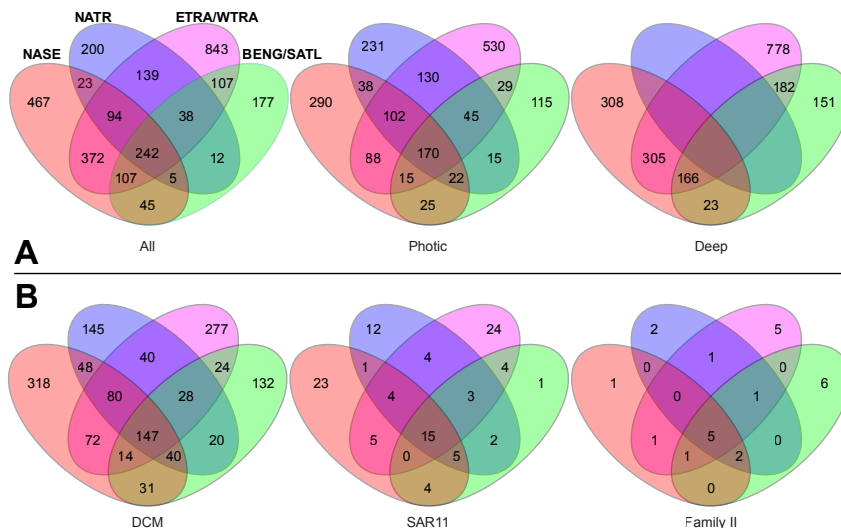
Close

Full Screen / Esc

Printer-friendly Version

Interactive Discussion





**Fig. 4.** Venn diagrams comparing the OTU richness identified in the Longhurst provinces sampled in this study. Panel A compares OTU richness identified in all the samples (All,  $n = 2,871$ ), samples from the photic zone (Photic,  $n = 1,845$ ), and samples from deep waters (Deep,  $n = 1,913$ ). Panel B compares OTU richness identified in all the deep chlorophyll maximum zone samples (DCM,  $n = 1,416$ ). Also panel B compares the OTU richness identified in the DCM zone for two of the most abundant taxonomic families, *SAR11* ( $n = 107$ ) and *Family II* ( $n = 25$ ). The studied provinces are grouped and labelled in the diagram for all samples (ALL) as follows: North Atlantic Subtropical East (NASE, 3 samples), North Atlantic Tropical Gyral (NATR, 2 samples), Eastern and Western Tropical Atlantic (ETRA/WTRA; ETRA, 2 samples; WTRA, 8 samples), and South Atlantic Gyral and Benguela Current Coastal (BENG/SATL; BENG, 3 samples; SATL, 1 sample). The photic diagram compares two samples each for NASE, NATR, and BENG/SATL provinces and five samples for the ETRA/WTRA provinces. The deep diagram compares one sample each for NASE and BENG/SATL provinces and three samples for ETRA/WTRA provinces. The DCM, SAR11 and Family II diagrams compare one sample for the NATR province and two samples for each one of the other provinces. Samples from the DCM, photic, and deep zones were defined as in Fig. 5.

Title Page

Abstract Introduction

Conclusions References

Tables Figures

◀ ▶

◀ ▶

Back Close

Full Screen / Esc

Printer-friendly Version

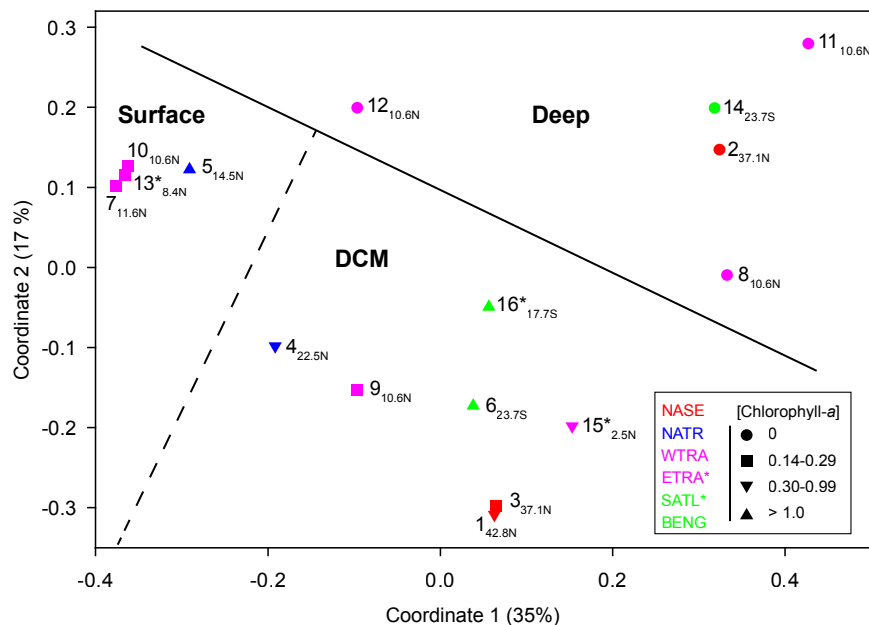
Interactive Discussion





Atlantic Ocean  
microbial diversity

C. J. Friedline et al.



**Fig. 5.** Principal Coordinate Analysis (PCoA) of the normalized abundance of the 2,871 OTUs based on Bray-Curtis dissimilarity. Each individual sample is identified by its respective biogeographic province (symbol color) and Chl-a concentration in  $\text{mg l}^{-1}$  (symbol shape). Each numerical identifier corresponds to a different sample (1–16) with the latitude of the sampling location as a subscript in the legend. The first three coordinates of the PCoA explained 65% of the variance in the community data (coordinate 1: 35%, 2: 17%, and 3: 13%).

Title Page

Abstract

Introduction

Conclusions

References

Tables

Figures

◀

▶

◀

▶

Back

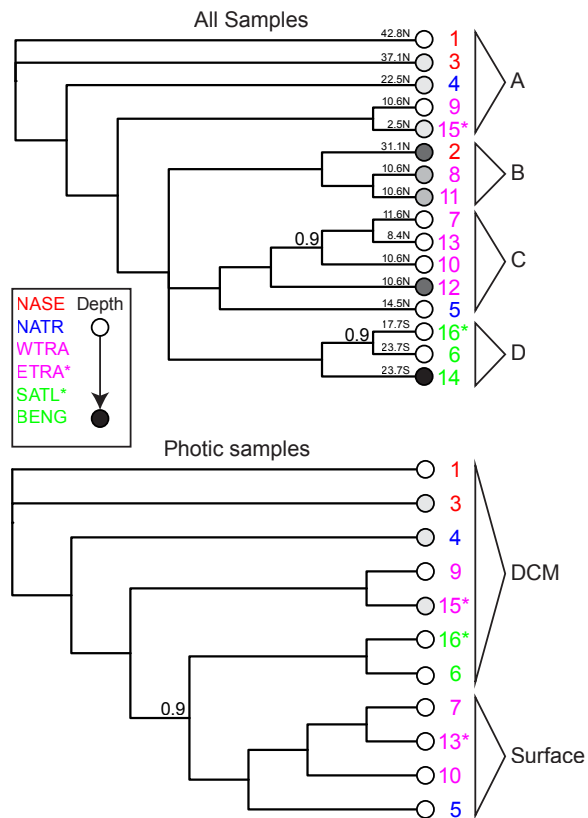
Close

Full Screen / Esc

Printer-friendly Version

Interactive Discussion





**Fig. 6.** Tree topology estimated by Bayesian inference operating on the abundance of the OTUs identified at 97 % identity, as described in the methods. Province is shown by color and depth is indicated by circles of increasing darkness (2–4600 m). Only branch posterior probabilities < 1.0 are shown on the tree. The latitude of the sampling location is indicated at the tip of the branches of the “All Samples” topology.