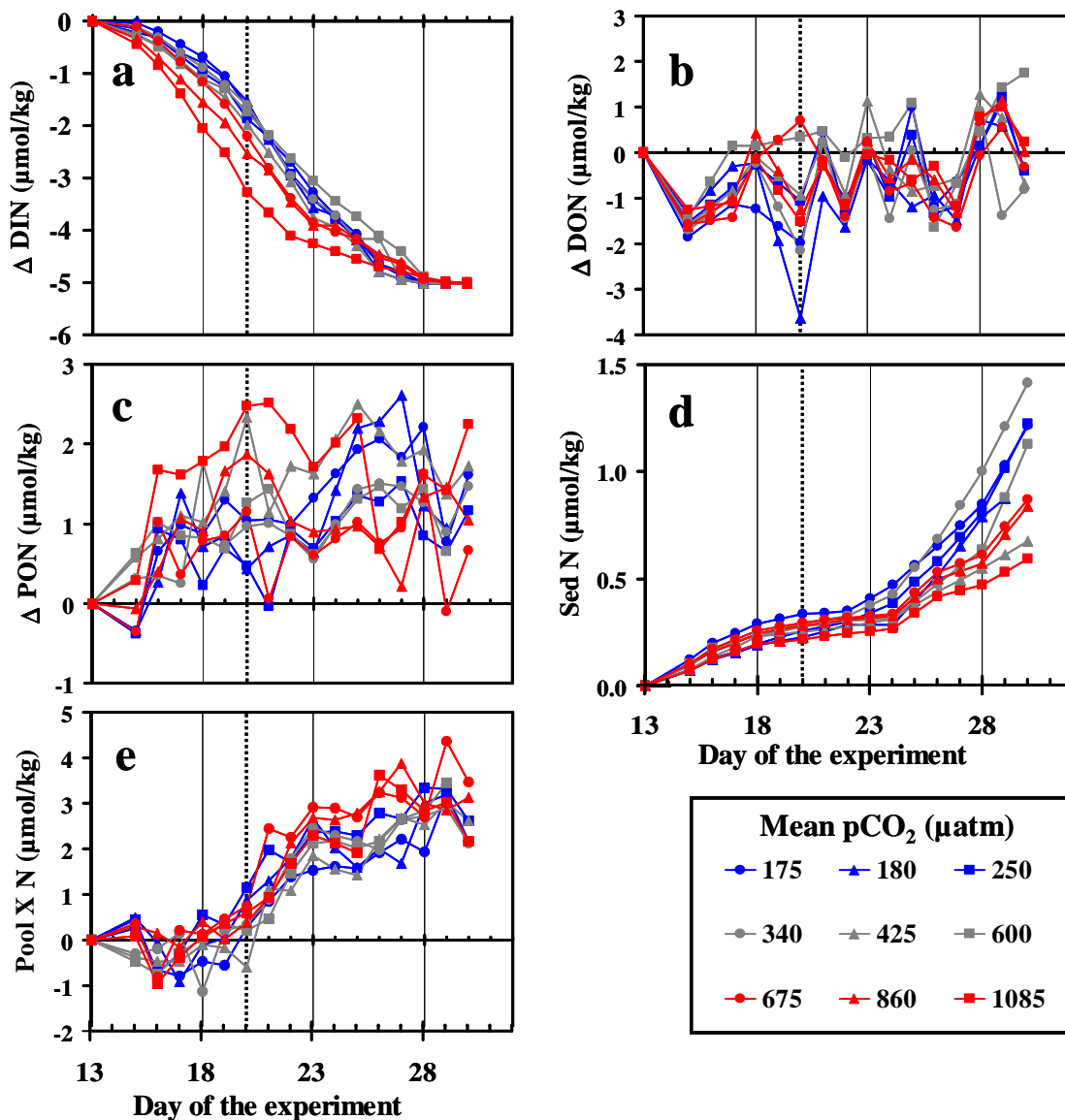


Suppl. Figure 1

Temporal development of nitrogen pools in all treatments relative to day 13. Sedimentation (**Sed**) (f) is shown cumulative. Particulate organic ( $\Delta$ **PON**) (e), dissolved inorganic ( $\Delta$ **DIN**) (c) and dissolved organic nitrogen ( $\Delta$ **DON**) (d) are measured differences to day 13 values. **Pool X** is the sum of ( $\Delta$ **DIN**), ( $\Delta$ **PON**) and (**Sed**) and accounts for the nitrogen allocated to (**DON**) and undetermined pools (see section 2.9). Vertical dashed line is coded as described for (Fig 6)



Supp. Figure 2

Temporal development of phosphorus pools in all treatments relative to day 13. Sedimentation (**Sed**) (f) is shown cumulative. Particulate organic ( $\Delta$ **POP**) (e), dissolved inorganic ( $\Delta$ **DIP**) (c) and dissolved organic phosphorus ( $\Delta$ **DOP**) (d) are measured differences to day 13 values. **Pool X** is the sum of ( $\Delta$ **DIP**), ( $\Delta$ **DOP**) and (**Sed**) and accounts for the phosphorus allocated to (**POP**) and undetermined pools (see section 2.9). Vertical dashed line is coded as described for (Fig 6)

