

This discussion paper is/has been under review for the journal Biogeosciences (BG).
Please refer to the corresponding final paper in BG if available.

High latitude cooling associated with landscape changes from North American boreal forest fires

B. M. Rogers¹, J. T. Randerson¹, and G. B. Bonan²

¹Department of Earth System Science, University of California, Irvine, California, USA

²Terrestrial Sciences Section, Climate and Global Dynamics Division, National Center for Atmospheric Research, Boulder, Colorado, USA

Received: 8 August 2012 – Accepted: 18 August 2012 – Published: 11 September 2012

Correspondence to: B. M. Rogers (bmrogers@uci.edu)

Published by Copernicus Publications on behalf of the European Geosciences Union.

BGD

9, 12087–12136, 2012

Cooling from boreal forest fires

B. M. Rogers et al.

Title Page

Abstract

Introduction

Conclusions

References

Tables

Figures

◀

▶

◀

▶

Back

Close

Full Screen / Esc

Printer-friendly Version

Interactive Discussion



Abstract

Fires in the boreal forests of North America are generally stand-replacing, killing the majority of trees and initiating succession that may last over a century. Functional variation during succession can affect local surface energy budgets and, potentially, regional climate. Burn area across Alaska and Canada has increased in the last few decades and is projected to be substantially higher by the end of the 21st century because of a warmer climate with longer growing seasons. Here we simulated the changes in forest composition due to altered burn area using a stochastic model of fire occurrence, historical fire data from national inventories, and succession trajectories derived from remote sensing. When coupled to an Earth system model, younger vegetation from increased burning cooled the high-latitude atmosphere, primarily in the winter and spring, with noticeable feedbacks from the ocean and sea ice. Results from multiple scenarios suggest that a doubling of burn area would result in surface cooling of $0.23 \pm 0.09^\circ\text{C}$ and $0.43 \pm 0.12^\circ\text{C}$ for winter–spring and February–April time periods, respectively. This could provide a negative feedback to high-latitude terrestrial warming during winter on the order of 4–6 % for a doubling, and 14–23 % for a quadrupling, of burn area. Further work is needed to integrate all the climate drivers from boreal forest fires, including aerosols and greenhouse gasses.

1 Introduction

Boreal forests represent one of the key biomes for understanding feedbacks to climate change because of their large area, carbon stocks (McGuire et al., 2002), biophysical imprints (Chapin III et al., 2000; Euskirchen et al., 2010), and sensitivities to disturbance regimes (Weber and Flannigan, 1997; Lloyd et al., 2006). These systems experience particularly strong climate changes: northern high latitudes have been warming approximately five times faster than the global mean during the past few decades (Arctic Climate Impact Assessment, 2004), and are projected to warm by a further 3–8 °C

BGD

9, 12087–12136, 2012

Cooling from boreal forest fires

B. M. Rogers et al.

Title Page

Abstract

Introduction

Conclusions

References

Tables

Figures

◀

▶

◀

▶

Back

Close

Full Screen / Esc

Printer-friendly Version

Interactive Discussion



by 2100 (Christensen et al., 2007). One of the primary feedbacks from boreal forests involves the effects of vegetation on surface energy budgets. Vegetation feedbacks are amplified in these high-latitude environments by seasonal snow cover and can influence global climate: on long time scales, vegetation changes may even be necessary for the initiation of ice ages (Gallimore and Kutzbach, 1996; de Noblet et al., 1996; Horton et al., 2010).

Wild fires are a major agent of change for forest composition in boreal North America (Viereck, 1973; Payette, 1992; Chapin III et al., 2006). These fires are typically crown fires that kill most overstory trees and initiate century-long vegetation succession that alters energy absorption and partitioning. Wildfire frequency and extent is controlled by long-term climate (Carcaillet et al., 2001) and short-term patterns of summer high-pressure systems (Macias Fauria and Johnson, 2008) that alter temperature, precipitation, humidity, and wind (Flannigan and Harrington, 1988). Such conditions are projected to result in increased fire weather and burn area during the 21st century. A comprehensive understanding of the potential impacts of altered fire regimes on vegetation distributions, energy budgets, and climate at the continental scale is thus critical for our understanding of high-latitude feedbacks to anthropogenic climate change.

Species and plant functional compositions of North American boreal forests are largely controlled by successional processes after disturbance, including fire, insects, and to a lesser degree, harvesting (Kurz and Apps, 1999). Mature forests (ie. several hundred years old) consist primarily of flammable evergreen conifers, including black spruce (*Picea mariana*), white spruce (*Picea glauca*), and to some extent in Eastern Canada, balsam fir (*Abies balsamea*) and white cedar (*Thuja occidentalis*). Immediately after a fire, winter and spring albedos are increased dramatically (up to 0.8) because of higher snow exposure, while on-site deposition of black carbon and charred surfaces reduce summer albedo (Chambers and Chapin III, 2002; Amiro et al., 2006; Jin et al., 2012). Despite these low albedos, net radiation and heat fluxes remain low because of decreased surface roughness and turbulent energy exchange (Chambers et al., 2005; Liu and Randerson, 2008). Although black carbon has a substantial impact

BGD

9, 12087–12136, 2012

Cooling from boreal forest fires

B. M. Rogers et al.

Title Page

Abstract

Introduction

Conclusions

References

Tables

Figures

◀

▶

◀

▶

Back

Close

Full Screen / Esc

Printer-friendly Version

Interactive Discussion



Cooling from boreal forest fires

B. M. Rogers et al.

Title Page

Abstract

Introduction

Conclusions

References

Tables

Figures

◀

▶

◀

▶

Back

Close

Full Screen / Esc

Printer-friendly Version

Interactive Discussion



on summer surface energy budgets, its persistence is limited to the first few years as it is washed away and degraded, and grasses, herbs, and shrubs colonize and/or resprout (Amiro et al., 1999; Yoshikawa et al., 2003). Re-growing landscapes during the first two decades are subsequently dominated by shrubs and tree saplings that exhibit higher summer albedos than pre-fire mature ecosystems. Winter and spring albedos continue to remain high, although they generally start to decline within a decade or two (Amiro et al., 2006; Beck et al., 2011).

Approximately 20 yr after a fire, forest succession is dominated by trees. Two principal pathways are possible at the plant functional type (PFT) level: (1) self-replacement by evergreen conifers, or (2) relay floristics, in which deciduous broadleaf trees, primarily aspen (*Populus tremuloides*), birch (*Betula* spp.), or balsam poplar (*Populus balsamifera*), dominate and are gradually replaced by conifers after 60–150 yr. With the latter pathway, summer albedo and latent heat remain higher, and sensible heat lower, than in mature forests because deciduous trees have brighter leaves and partition more of the available energy into transpiration during the growing season (Eugster et al., 2000; Liu and Randerson, 2008). Winter and spring albedos gradually decline as the canopy closes and/or deciduous trees, with near-zero leaf area outside the summer months, are replaced by conifers (Amiro et al., 2006; Lyons et al., 2008). Relay floristics therefore extend post-fire trends in albedo and transpiration for many decades, whereas conifer self-replacement expedites the return to pre-fire conditions. While studies have demonstrated that pre-fire forest age and composition, fire severity, climate zone, topography, aspect, and initial tree recruitment influence tree successional pathway (Mann and Plug, 1999; De Grandpré et al., 2000; Fastie et al., 2003; Johnstone and Kasischke, 2005; Johnstone and Chapin III, 2006; Kurkowski et al., 2008; Johnstone et al., 2010b; Beck et al., 2011), the prevalence of these across North America remains largely uncharacterized.

Boreal forest fires are projected to increase in frequency and severity by the end of the 21st century, due primarily to longer growing seasons and exacerbated mid-summer drought. Studies using fire weather indices or statistical relationships between

burn area and climate variables from climate models generally predict increases in burn area on the order of 40–150 % across Canada and Alaska by 2100 (e.g. Flannigan and Van Wagner, 1991; Stocks et al., 1998; Flannigan et al., 2005; Krawchuk et al., 2009; Amiro et al., 2009; Wotton et al., 2010). In an extreme case, Balshi et al. (2009) projected increases of 250–450 %. Indeed, climate change-mediated intensifications of fire regimes are already being observed (Gillett et al., 2004): over the last three decades, burn area has been increasing in Canada (Podur et al., 2002; Stocks et al., 2003) and Alaska (Kasischke et al., 2010), with consequent increases in young deciduous stands (Bond-Lamberty et al., 2009). If fire regimes do follow such trajectories, we should expect a future landscape with younger stands and modified biophysics.

Recent research has identified the main drivers of fire-mediated biophysical impacts on high latitude climate in North American boreal forests. Field studies of fire chronosequences have documented typical post-fire trajectories of energy budget constituents, including albedo, net radiation, and fluxes of sensible, latent, and ground heat (Chambers and Chapin III, 2002; Amiro et al., 2006; Liu and Randerson, 2008; McMillan and Goulden, 2008). Studies utilizing remote sensing have quantified trends of post-fire albedo (Lyons et al., 2008; Jin et al., 2012) and leaf habit (deciduous vs. evergreen, Beck et al., 2011) in various regions of Alaska and Canada. Randerson et al. (2006) demonstrated that a set of fires in Alaska resulted in globally-averaged radiative cooling. Euskirchen et al. (2009) used a dynamic vegetation and ecosystem model to project future fire regimes, PFT areas, and feedbacks to atmospheric heating in Alaska.

Here, we extend these analyses to the continental scale and simulate spatially- and temporally-explicit climate impacts within a coupled Earth system model. Generalized succession curves are derived from remote sensing and the literature and used to drive vegetation distributions and climate under varying burn area scenarios. Results suggest a cooling trend with increased burning, strongest in late winter and early spring, that becomes amplified due to ocean and sea ice feedbacks after an approximate doubling of burn area.

BGD

9, 12087–12136, 2012

Cooling from boreal forest fires

B. M. Rogers et al.

Title Page

Abstract

Introduction

Conclusions

References

Tables

Figures

◀

▶

◀

▶

Back

Close

Full Screen / Esc

Printer-friendly Version

Interactive Discussion



2 Methods

2.1 Introduction

This research involved two primary undertakings: (1) the construction of driving datasets, including boreal forest extent, fire frequency, and vegetation succession, and (2) model simulations of fire-driven vegetation changes, continental energy budgets, and high latitude climate. In the following sections we describe our approaches to these main tasks and to sensitivity analyses used to quantify uncertainty.

2.2 Driving datasets

2.2.1 Boreal forest domain

Our simulations were performed on a 1.9° latitude \times 2.5° longitude (hereafter 2°) grid within the Community Earth System Model version 1.0.2 (CESM, Gent et al., 2011). CESM's land model, the Community Land Model version 4 (CLM, Oleson et al., 2010), grid cells are composed of urban, glacier, lake, wetland, and natural vegetation fractions derived from the Moderate Resolution Imaging Spectroradiometer (MODIS), the Advanced Very High Resolution Radiometer (AVHRR), and long-term climate and crop datasets (Lawrence and Chase, 2007). Within natural vegetation, there are 16 plant functional types (PFTs), four of which occur in boreal/arctic North America, and bare ground. We defined our domain on this grid to be North American grid cells that contained at least 50 % boreal/arctic vegetation cover within the vegetated fraction, at least 1 % tree cover from MODIS, and at least one fire within the Alaska Large Fire Database (Kasischke et al., 2002) or the Canadian National Fire Database (Amiro et al., 2001; Stocks et al., 2003; Parisien et al., 2006) (NFDBs) (Fig. 1). Based on analyses of remote sensing data (below), within each grid cell a fraction of boreal/arctic vegetation was defined as boreal forest and the complement as non-forest. The latter was assigned a composition of boreal shrubs and arctic grass based on MODIS land cover

BGD

9, 12087–12136, 2012

Cooling from boreal forest fires

B. M. Rogers et al.

Title Page

Abstract

Introduction

Conclusions

References

Tables

Figures

◀

▶

◀

▶

Back

Close

Full Screen / Esc

Printer-friendly Version

Interactive Discussion



over non-forest pixels, and the PFT composition of the boreal forest fraction changed as a function of our vegetation simulations (Sect. 2.3.1).

A variety of land cover datasets can potentially distinguish boreal forests from non-forest at moderate pixel resolution (approximately 300 m – 1 km). These datasets are derived from classification schemes using high-resolution training datasets and vegetation indices from satellite-based sensors, including AVHRR (e.g. Loveland et al., 2000; DeFries and Hansen, 2010; Ramankutty and Foley, 2010), MODIS (Friedl et al., 2002), the VEGETATION sensor (Bartholome and Belward, 2005), and the Medium Resolution Imaging Spectrometer (Bontemps et al., 2011). Initial analyses revealed discrepancies among and between datasets at field sites with known land cover, although MODIS performed best (data not shown). We therefore developed a pixel-level classification scheme based on MODIS land (MCD12Q1 year 2003) and tree cover (MOD44B) at 500-m resolution to separate forest from non-forest vegetation. Chronosequences of natural vegetation pixels over fire scar polygons from the NFDBs demonstrated that while MODIS land and tree cover displayed expected post-fire successional patterns, mean tree cover remained above 22 % (Fig. 2). 87 % of unburned grass and shrub pixels contained tree cover under 18 %, and 87 % of burned pixels or unburned forest types contained tree cover over 18 %. We therefore defined forest pixels as those with natural vegetation cover and tree cover greater than or equal to 18 % (Fig. 1).

2.2.2 Historical burn area

Mean historical boreal forest fire return intervals (FRIs) were quantified on the 2° CLM grid using point versions of the NFDBs (Fig. 1). We defined FRI as the length of time required to burn an area equal to the boreal forest fraction of a given grid cell. Because burn area prior to 1960 is likely underestimated due to incomplete statistics (Amiro et al., 2001), we used data from 1961–2010 and accounted for missing years in particular Canadian provinces. In relevant southern grid cells, temperate and boreal vegetation were assigned equal relative burn areas. Because forest pixels accounted for 85 % of burn scars, 15 % of the total burn area was assigned to non-forest. Boreal

Cooling from boreal forest fires

B. M. Rogers et al.

Title Page

Abstract

Introduction

Conclusions

References

Tables

Figures

◀

▶

◀

▶

Back

Close

Full Screen / Esc

Printer-friendly Version

Interactive Discussion



forest FRI within a given grid cell was then calculated as

$$\text{FRI} = \frac{\text{boreal forest area (km}^2\text{)}}{\text{mean annual boreal forest burn area (km}^2\text{yr}^{-1}\text{)}}, \quad (1)$$

and constrained to have a maximum value of 1000 yr.

Empirical evidence suggests that younger boreal forests are less likely to burn due to lower levels of fine fuels and higher fractions of relatively nonflammable deciduous trees (Schimmel and Granström, 1997; Cumming, 2001; Lavoie, 2004). To account for this, we quantified age-dependent burn probabilities from fire scar polygons in the NFDBs. Ages of post-fire stands were tracked annually to calculate the cumulative probability of re-burn. A linear regression was fit to the annual probabilities for years 1–60 after a fire; thereafter, burn probability was assumed constant (Fig. 2).

2.2.3 Succession trajectories

Post-fire succession, even in America's boreal forests of low species diversity and high fire severity, is neither deterministic nor spatially constant (Bonan and Shugart, 1989). Re-vegetation involves complex interactions between fire severity, mortality, reproductive strategies, local seed sources, soil attributes, topography, and micro-climates (Viereck, 1973, 1983; Chapin et al., 2006; Johnstone et al., 2010b). Because of its long-term nature, there exists little quantitative information on succession patterns across large spatial domains. In this study, we attempted to characterize the mean patterns of succession at the PFT level across boreal North America. The ultimate goal was to represent surface energy budget anomalies via fire-mediated changes to vegetation distributions.

We used remote sensing analyses and expert opinion to construct post-fire vegetation succession trajectories (Fig. 2). Because they displayed clear patterns and directly translate into CLM PFTs, we quantified evergreen needleleaf (EN) tree and shrub succession from chronosequences of MODIS land cover over fire scars from the NFDBs.

Cooling from boreal forest fires

B. M. Rogers et al.

Title Page

Abstract

Introduction

Conclusions

References

Tables

Figures

◀

▶

◀

▶

Back

Close

Full Screen / Esc

Printer-friendly Version

Interactive Discussion



A logistic curve was fit to the EN data, and a Weibull curve to the shrub. Deciduous broadleaf trees were assumed to dominate during mid-succession (approximately 20–60 yr), resulting in a pattern that qualitatively mimics “relay floristics” succession. We prescribed a mixture of non-vegetated ground and herbaceous plants, represented by grasses, during the first few years following fire. To account for the effect of charred surfaces on summer energy budgets, we assigned part of the non-vegetated fraction to a new PFT entitled “char” (Sect. 2.3.2). Although these trajectories are necessary over-simplifications, the validity of applying them to post-fire landscapes across boreal North America was tested in several ways (Sect. 2.4).

2.3 Simulations

2.3.1 Vegetation

A simple stochastic model of fire occurrence was developed to quantify spatially-explicit boreal forest vegetation as a function of fire regime. Within each 2° CLM grid cell, the boreal forest fraction was divided into sub-grid cells to represent the size of an average fire. Using fires 200 ha or larger from the point version NFDBs, this was approximated as 7000 ha. Although these fires only represent 2–3 % of the total number of fires in Canada, they account for over 97 % of the burn area (Amiro et al., 2001; Stocks et al., 2003). Most grid cells contained a few hundred sub-grid cells.

The model ran on an annual time step. For each sub-grid cell, the annual probability of burning (P_{burn}) was computed from the product of a general “fire probability seed”, which was uniform across the grid cell (and initially estimated from the grid cell FRI shown in Fig. 1), and stand age via the age-dependent fire probability function (Fig. 2, Sect. 2.2.2). A random number from 0–1 was selected and, if this was less than P_{burn} , the sub-grid cell burned and its stand age was reset to zero. PFT composition then followed our succession curves until subsequent burning. When the grid cell mean stand age reached steady state, mean FRI was calculated and compared to the desired FRI. The fire probability seed was adjusted until the two fell within 0.2 % of each other.

Cooling from boreal forest fires

B. M. Rogers et al.

Title Page

Abstract

Introduction

Conclusions

References

Tables

Figures



Back

Close

Full Screen / Esc

Printer-friendly Version

Interactive Discussion



For the simulation of present-day vegetation, the desired FRIs equaled those for the historical 1961–2010 period (BAx1, Sect. 2.2.2). FRIs corresponding to multipliers of 0, 2, and 4 on historical burn area (BAx0, BAx2, and BAx4) were used to quantify changes to vegetation distributions due to the absence of fire and with a doubling and quadrupling of fire area. We effectively applied a multiplier of zero by assigning PFTs to the maximum age composition from our PFT trajectories.

2.3.2 Land model

We used the CLM version 4 with satellite phenology (CLM-SP) to quantify the impacts of vegetation on surface energy budgets. This version of the CLM incorporates remote sensing-based estimates of vegetation phenology to simulate fluxes of energy, momentum, and water. To more realistically represent early post-fire water fluxes, we added a multiplicative scalar of 0.05 to bare soil evaporation in non-vegetated surfaces. This was applied only to the fraction of non-vegetated surface that resulted from burning. Recent parameterizations have addressed the CLM's high evaporation bias over bare soil (Oleson et al., 2008; Lawrence et al., 2011), although it remains an outstanding issue (P. Lawrence, personal communication, 2012). Additionally, we added a new PFT, "char", to capture the effect of charred surfaces and deposited ash on summer albedo. Char was represented by a plant with zero leaf area, small stature (0.2 m), and low reflectance (visible and near infrared equal to 0.09 and 0.2, respectively, compared to 0.16 and 0.39 for tree and shrub stems, and 0.31 and 0.53 for grass stems).

Uncoupled CLM simulations were conducted for 40 yr, driven by our modified vegetation distributions and repeating year-2000 climate from Qian et al. (2006). Although certain aspects of the model take years to reach equilibrium, especially soil water, the CLM displays no internal variability other than that inherited from external forcings. We therefore extracted year 40 for our analyses.

BGD

9, 12087–12136, 2012

Cooling from boreal forest fires

B. M. Rogers et al.

Title Page

Abstract

Introduction

Conclusions

References

Tables

Figures

◀

▶

◀

▶

Back

Close

Full Screen / Esc

Printer-friendly Version

Interactive Discussion



which we changed vegetation annually (on 1 January of each year) to match our PFT succession trajectories (Fig. 2e, Sect. 2.2.3). The grid cells and months containing the observations were extracted for comparisons.

Vegetation distributions in the boreal forest fraction of grid cells were functions of fire frequency and PFT succession from our vegetation model (Sect. 2.3.1). This approach effectively isolates landscape changes due to forest fires, but risks misrepresenting historical vegetation by assuming post-fire succession to be the sole driver of forest composition. Although fire is one of the major determinants, vegetation in boreal North America is controlled by a variety of factors, including climate, solar radiation, soil moisture and temperature, nutrient availability, permafrost, depth of forest floor organic layer, proximity to seed sources, reproductive legacies, and other disturbances (Heinselman, 1978; West et al., 1981; Dyrness et al., 1986; Bonan, 1989; Bonan and Shugart, 1989; Soja et al., 2007). To validate this approach, simulated present-day vegetation was compared to continental-to-global land cover datasets, including MCD12Q1, GlobCover 2009 (Bontemps et al., 2011), GLC2000 North America (Bartholome and Belward, 2005), University of Maryland Land Cover (DeFries and Hansen, 2010), ISLSCP II Potential Natural Vegetation Cover (Ramankutty and Foley, 2010), the Global Land Cover Characteristics Data Base Version 2.0 (Loveland et al., 2000), and the CLM input PFT distributions (Lawrence and Chase, 2007).

2.5 Sensitivity analyses

Four sensitivity studies were conducted to characterize key sources of uncertainty. Due to the demanding computer resources of the coupled CESM, our analyses focused on energy budgets in the uncoupled CLM. In each case, vegetation distributions from BAx1 and BAx2 were used, and the CLM was run for 40 yr with repeating year 2000 forcings.

In our main simulations, burn area was assumed to increase spatially in direct proportion to historical distributions. This assumption may not be strictly valid given that young stands are less likely to burn, our historical data are limited to 50 yr, and the

Cooling from boreal forest fires

B. M. Rogers et al.

Title Page

Abstract

Introduction

Conclusions

References

Tables

Figures

◀

▶

◀

▶

Back

Close

Full Screen / Esc

Printer-friendly Version

Interactive Discussion



spatial pattern of fires may change in the future. To test the influence of altered burn distributions, we implemented a scenario (“uniform BA increase”) in which burn area doubled across the continent but was added uniformly to all boreal forests.

Analysis from the NFDB polygons revealed that nearly all young forest re-burns (< 10 yr) occurred near the perimeters of burn scars (data not shown), where mapping errors are suspected to be greatest. This suggests that the actual probability of re-burn in young stands may be smaller than our regression indicates (Sect. 2.3.2). To address this, our second sensitivity analysis (“nonflammable young stands”) used an age-dependent burn probability function that passed through the point (0,0), but was otherwise identical to the main regression.

Despite being validated in several ways, there remained a high level of uncertainty regarding our succession curves, particularly the contribution of deciduous broadleaf (DB) trees. In our main trajectories, the EN tree fraction was taken directly from a regression of MODIS EN tree pixels over fire scars. We assigned the non-EN tree fraction in mid-successional years exclusively to DB trees. However, in MODIS, this includes DB trees as well as mixed forests and savannas, which undoubtedly contain contributions from conifers. We therefore conducted simulations (“half deciduous tree”) in which the DB fraction was halved, and the residual area assigned to EN trees.

In our main simulations, multipliers were applied to boreal forest burn area. There is, however, a negative feedback to changes in burn area due to altered vegetation and stand ages (Fig. 2). Although characterized by Krawchuk and Cumming (2011) for a region in Alberta, Canada, this biotic feedback has been neglected in projections of continent-wide burn area (e.g. Flannigan et al., 1998; Stocks et al., 1998; Amiro et al., 2009; Balshi et al., 2009). We quantified this feedback by conducting a simulation (“biotic BA feedback”) in which the x2 multiplier was applied to the historical fire probability seed, a proxy for the combination of historic fire weather and fuel dynamics, instead of burn area, for each grid cell. This sensitivity study provides an estimate of how much burn area and energy flux anomalies are dampened by younger, less flammable vegetation under scenarios of increased burning.

Cooling from boreal forest fires

B. M. Rogers et al.

Title Page

Abstract

Introduction

Conclusions

References

Tables

Figures

◀

▶

◀

▶

Back

Close

Full Screen / Esc

Printer-friendly Version

Interactive Discussion



3 Results

3.1 Validation

After minor parameterization changes and implementation of the “char” PFT, CLM-simulated post-fire energy budgets compared favorably with observations (Fig. 3). A higher level of uncertainty exists for observations and model-observation comparisons during winter and spring. This is likely due to a greater dependence of winter and spring albedo on burn severity, snow cover, and time that dead boles remain standing. While comparisons with Amiro et al. (2006) imply a high bias in modeled post-fire winter/spring albedo, data from Lyons et al. (2008) suggest model estimates are high for the first decade and low thereafter. Comparisons of monthly albedo with Randerson et al. (2006) are favorable over the entire year for a mature and early burn site, as are latent and sensible heat (data not shown). Considering the variability and uncertainty inherent in post-fire succession and measurement techniques, we believe our approach captures many of the important processes regulating post-fire energy budgets.

Domain-wide vegetation fractions from remote-sensing based datasets display a high amount of variability (Table 1). This is to be expected for categorical data derived from different satellite sensors, spectral bands, training layers, analysis years, vegetation classes, classification techniques, and experts’ interpretation. Nonetheless, our simulations of historical vegetation compared reasonably well. It must be noted that direct comparisons are not possible due to differences in vegetation classification: observational datasets include mixed forests, woodland/savanna, and/or tundra, all of which are not represented by distinct CLM PFTs. Although our simulated deciduous broadleaf tree coverage is higher than most datasets, deciduous stands are comparatively patchy on the landscape and likely comprise a substantial portion of the mixed forests and woodland/savanna classes present in many of the land cover products shown in Table 1. For our sensitivity analysis in which the deciduous tree fraction of succession was halved, domain-wide DB tree coverage dropped from 7.9% to 3.9%.

Cooling from boreal forest fires

B. M. Rogers et al.

Title Page

Abstract

Introduction

Conclusions

References

Tables

Figures

◀

▶

◀

▶

Back

Close

Full Screen / Esc

Printer-friendly Version

Interactive Discussion



3.2 Vegetation simulations

In our vegetation model, North American boreal forests varied from nearly pure evergreen needleleaf (EN) stands at long fire return intervals (FRIs) to mixtures of EN trees, deciduous broadleaf (DB) trees, shrubs, grasses, and non-vegetated ground at short FRIs (Fig. 4). DB trees were more dominant than EN trees in stands with FRIs less than approximately 60 yr, and peaked at about 40% coverage in grid cells with FRIs of about 45 yr. This agrees qualitatively with observations: across Canada, forest inventory data suggest that the deciduous fraction of forests varies from 1% to 40% depending on ecozone (Amiro et al., 2001).

Modified fire regimes, represented by multipliers of 0, 2, and 4 on historical burn area (BAx0, BAx2, and BAx4), had a pronounced effect on simulated boreal forest vegetation across the domain (Fig. 4). EN tree fraction was approximately halved from 62% in BAx0 to 32% in BAx4, with DB trees and shrubs accounting for most of converted vegetation. Including tundra pixels, shrub coverage nearly equaled EN tree coverage under BAx4 (28% shrubs and 32% EN trees).

3.3 Uncoupled land model simulations

The largest impacts on domain-wide CLM surface energy budgets occurred during late winter and spring (Fig. 5). Increased burning resulted in higher albedos caused by more snow exposure. With increasing daylight as winter progressed to spring, this acted to substantially reduce February–April net radiation (−7.4% for BAx2 and −17.3% for BAx4) and sensible heat (−7.9% for BAx2 and −18.1% for BAx4).

Anomalies during summer months were comparatively smaller (Fig. 5) and mainly controlled by differences in energy partitioning and turbulent exchange. With increased burning, domain-wide albedos were elevated slightly. Although less solar radiation was absorbed, outgoing longwave was higher due to shorter roughness lengths. Both of these factors acted to decrease net radiation. However, because deciduous trees partition more available energy into transpiration during the growing season, latent heat

BGD

9, 12087–12136, 2012

Cooling from boreal forest fires

B. M. Rogers et al.

Title Page

Abstract

Introduction

Conclusions

References

Tables

Figures

◀

▶

◀

▶

Back

Close

Full Screen / Esc

Printer-friendly Version

Interactive Discussion



was still elevated (+1.6% and +3.6% for BAx2 and BAx4, respectively, from June–August), which further reduced sensible heat.

Fall and early winter displayed minimal changes, as solar insolation and snow accumulation were relatively low. On an annual basis, more burning resulted in higher albedos, less net radiation and sensible heat, and slightly more latent heat (Table 2). One would expect this to result in cooling, strongest in winter and spring, and atmospheric moistening during the summer. However, local responses and remote feedbacks, involving the atmosphere, ocean, and sea ice, determine the patterns and magnitudes of climate impacts from such forcings.

3.4 Coupled climate model simulations

Late winter and spring temperatures were significantly affected by albedo changes (Table 3). The largest domain-mean anomalies occurred in March for BAx0 (+0.73 °C) and in February for BAx2 (−0.49 °C) and BAx4 (−1.41 °C) (Fig. 6). Changes were generally greatest across the high-burning areas of Alaska, Central Canada, and Quebec (Fig. 7), reaching maximum grid cell values of +1.9 °C (BAx0), −1.2 °C (BAx2), and −3.0 °C (BAx4) for mean February–April anomalies.

While surface forcings displayed a dampened response to increasing burn area, temperature anomalies were linear, if not amplified (Fig. 8). A number of feedbacks were responsible for this. Prevailing westerlies relayed continental temperature anomalies to the North Atlantic and Greenland (Fig. 7), cooling the sea surface and increasing annual sea ice coverage (Fig. 9): mainly polar ice in the summer and fall, and sub-polar ice in the winter and spring. This produced further cooling in Eastern Canada. Snow coverage within the domain also increased (+2.6% and +8.1% in April–May for BAx2 and BAx4, respectively), amplifying the positive land surface albedo anomalies (Fig. 5). Total column atmospheric water dropped slightly with increased burning (from +0.6% in BAx0 to −1.1% in BAx4 annual means), reducing its greenhouse effect. Regressions on the relatively linear responses from BAx0–BAx2 for annual, winter–spring, and February–April time periods yield slopes of -0.12 ± 0.05 , -0.24 ± 0.09 , and

BGD

9, 12087–12136, 2012

Cooling from boreal forest fires

B. M. Rogers et al.

Title Page

Abstract

Introduction

Conclusions

References

Tables

Figures

◀

▶

◀

▶

Back

Close

Full Screen / Esc

Printer-friendly Version

Interactive Discussion



-0.43 ± 0.12 °C per unit increase in historical (1961–2010) burn area. This equates to -0.06 ± 0.02 , -0.11 ± 0.04 , and -0.20 ± 0.06 °C/(Mha yr⁻¹) (Table 4).

As a result of climate feedbacks and, potentially, model biases, domain-wide surface energy flux anomalies were somewhat dissimilar between coupled and uncoupled simulations (Table 2). While land surface albedo changes were comparable, the ground surface cooled considerably more with increased burning in the coupled model, which tended to reduce longwave emission and dampen net radiation anomalies. Additionally, when coupled to cooler atmospheres with less evaporative demand, the land surface in BAx2 and BAx4 evaporated less water throughout the winter, spring, and early summer (Fig. 5). Although surface specific humidity decreased during these months, so did temperature, so that spring vapor pressure deficits were reduced by about 3 % in BAx2 and 7 % in BAx4 (Table 3). The CESM also displayed a high temperature bias over the domain during these months (Fig. 6), which may have exacerbated vapor pressure deficit anomalies due to the non-linear Clausius-Clapeyron relationship between saturation vapor pressure and temperature. Annual latent heat changes were therefore opposite in sign in BAx2 and BAx4 between the two sets of simulations (Table 2), and sensible heat anomalies were further dampened. As a result of this and other potential dynamical changes, precipitation displayed a weak negative trend with increased burning (Table 3).

The boreal atmosphere responded in other notable ways to surface forcings. Because sensible heat decreased with more burning, planetary boundary layers were lowered throughout the year, with greatest reductions in spring (Table 3). Cooling also created high surface pressure and anti-cyclonic wind anomalies in BAx2 and BAx4; the opposite was true for BAx0. Wind anomalies were greatest in winter, when anti-cyclonic flow dominated, with domain-wide values of -1.3 %, $+1.5$ %, and $+3.4$ % for BAx0, BAx2, and BAx4, respectively. A number of atmospheric responses reached beyond the boreal domain into temperate North America and the North Atlantic (e.g. Fig. 7).

BGD

9, 12087–12136, 2012

Cooling from boreal forest fires

B. M. Rogers et al.

Title Page

Abstract

Introduction

Conclusions

References

Tables

Figures

◀

▶

◀

▶

Back

Close

Full Screen / Esc

Printer-friendly Version

Interactive Discussion



3.5 Uncertainties

Sources of uncertainty, bias, and fallible assumptions in a study such as this are numerous. In an effort to evaluate their impacts, we quantified two major sources: driving datasets and climate model responses. For the driving datasets, we conducted four sets of BAx1 and BAx2 uncoupled land simulations with altered boundary conditions (Table 5): (1) burn area was added uniformly across the domain (“uniform BA increase”), (2) the burn probability vs. stand age function was forced through the point (0,0) (“nonflammable young stands”), (3) the DB tree composition throughout succession was halved (“half deciduous tree”), and (4) multipliers were applied to historical “fire probability seeds” instead of burn area (“biotic BA feedback”). Of the four experiments, “uniform BA increase” impacted surface energy budgets to the greatest degree. This scenario amplified fire-induced annual net radiation and sensible heat changes by over 30 % (Table 5), suggesting that new patterns of burning may strengthen the land surface cooling feedback from fires. The “nonflammable young stands” scenario also amplified energy budget anomalies, but to a much smaller degree. Alternatively, “half deciduous tree” and “biotic BA feedback” dampened energy budget changes in a nearly identical manner, resulting in an approximate 17 % reduction in net radiation anomalies. In “biotic BA feedback”, burn area was reduced by 21.7 % in BAx2 and by 30.5 % in BAx4. Because net radiation and surface temperatures responded relatively linearly from BAx0–BAx2 (Fig. 8, Table 2), we used the variance in net radiation anomalies between BAx1 and BAx2 as an estimate of uncertainty in our driving datasets (Table 4). This was done separately for each seasonal period.

The CESM coupled climate model displays a considerable amount of high-latitude inter-annual and inter-decadal variability because of long-term oscillations in atmosphere-ocean dynamics (Jahn et al., 2012; Landrum et al., 2012). This is true even with the slab ocean model (Subin et al., 2012), and is especially prominent in winter: we found the standard error of linearly de-trended surface temperature for land north of 45° N in CESM for BAx1 to be 2.37 °C for December–February vs. 1.97 °C in

BGD

9, 12087–12136, 2012

Cooling from boreal forest fires

B. M. Rogers et al.

Title Page

Abstract

Introduction

Conclusions

References

Tables

Figures

◀

▶

◀

▶

Back

Close

Full Screen / Esc

Printer-friendly Version

Interactive Discussion



5 Qian et al. (2006) reanalysis data. Due to computing resources, we were able to run our equilibrium climate simulations for a maximum of 120 yr each, with the exception of BAx4, which ran for 80 yr. To quantify uncertainty in our relationship of domain-wide temperature vs. burn area due to limited run time, we performed 1×10^6 Monte Carlo simulations of the estimated slope from BAx0–BAx2 for each seasonal period. In each case, simple linear regressions were fit to three points chosen from the normally distributed populations of Δ (temperature) (Fig. 8).

10 These two major sources of uncertainty were pooled, and resulted in uncertainties of 41 %, 37 %, and 29 % for slopes of temperature vs. burn area during annual, winter–spring, and February–April time periods (Table 4).

4 Discussion

15 Earth’s climate-vegetation system is especially sensitive to change at high latitudes. Temperature changes alter spatial patterns of plant establishment, survival, and competition. Once the potential for forest is realized, climate-dependent disturbance regimes place strong controls on species composition. Snow exposure amplifies albedo effects from structural vegetation changes. The relatively shallow boreal atmosphere responds sharply to these radiative perturbations, and additional feedbacks from glaciers, sea ice, and sea surface temperatures amplify the responses.

20 Researchers have explored the sensitivity of boreal climate to vegetation since the inception of credible land components within climate models. Otterman et al. (1984) calculated the high-latitude atmosphere to be 4.6°C cooler without the masking of snow from vegetation. Thomas and Rowntree (1992) demonstrated that boreal deforestation could increase land albedo and snow depth, and decrease surface temperature, net radiation, heat fluxes, and precipitation during spring. Bonan et al. (1992) estimated this cooling to be upwards of 12°C at 60°N in April when amplified by ocean feedbacks. More recently, Betts (2000) calculated a $+10$ to $+20\text{ W m}^{-2}$ surface shortwave forcing from afforestation in boreal regions. In a complementary deforestation experiment, Bala

Cooling from boreal forest fires

B. M. Rogers et al.

Title Page

Abstract

Introduction

Conclusions

References

Tables

Figures



Back

Close

Full Screen / Esc

Printer-friendly Version

Interactive Discussion



et al. (2007) estimated a 10.7 % increase in albedo, -10.6 W m^{-2} surface shortwave forcing, and $2.1 \text{ }^\circ\text{C}$ annual cooling in the 50° N – 90° N high latitude belt. Our study builds upon this earlier work, and uses a data-driven approach to characterize responses from a particularly influential and climate-sensitive land cover agent: boreal forest fires.

Our surface forcings are in general agreement with recent work in Alaska. Euskirchen et al. (2009) estimated an increase in summer albedo between 0.006 and 0.015, and winter albedo of 0.05, across the western arctic associated with burn area increases on the order of 100–200 % under future climates. For the same domain, we estimate albedo increases of 0.003 and 0.005 for summer, and 0.021 and 0.057 for winter, for a doubling and quadrupling of burn area, respectively. Randerson et al. (2006) estimated a cumulative atmospheric radiative forcing of -4.2 W m^{-2} due to surface albedo over the first 80 yr for one set of fires in interior Alaska. A reduction in fire return interval (FRI) from 80 to 40 yr was estimated to cause a radiative forcing of -1.9 W m^{-2} . In the same location, we estimate surface forcings of approximately -6 W m^{-2} over the course of the first 80 yr post-fire (-6.0 W m^{-2} for surface shortwave and -5.4 W m^{-2} for net radiation). A drop in FRI from 80 to 40 yr produced a surface forcing of approximately -2 W m^{-2} (-2.4 W m^{-2} in surface shortwave and -1.9 W m^{-2} in net radiation).

The coupled model results presented here indicate a near-linear response of boreal North America winter and spring surface temperatures to vegetation changes associated with a decrease or increase in burning up to about 100 %. With even greater burning, surface forcings become dampened yet temperature responses are amplified. Driven by higher albedos, cooler temperatures in the increased burn scenarios reduce evaporative demand and lead to a slightly drier atmosphere with a shallower boundary layer for most of the year. Consequently, although uncoupled simulations suggest greater summer evaporation with younger deciduous forests, specific humidity and precipitation display slight negative trends.

Recent studies of woody encroachment in the arctic have highlighted the importance of evapotranspiration (ET)-driven atmospheric water vapor feedbacks (Swann et al., 2010; Bonfils et al., 2012). Swann et al. (2010) calculated this forcing to be 50 % larger

BGD

9, 12087–12136, 2012

Cooling from boreal forest fires

B. M. Rogers et al.

Title Page

Abstract

Introduction

Conclusions

References

Tables

Figures

◀

▶

◀

▶

Back

Close

Full Screen / Esc

Printer-friendly Version

Interactive Discussion



Cooling from boreal forest fires

B. M. Rogers et al.

[Title Page](#)[Abstract](#)[Introduction](#)[Conclusions](#)[References](#)[Tables](#)[Figures](#)[◀](#)[▶](#)[◀](#)[▶](#)[Back](#)[Close](#)[Full Screen / Esc](#)[Printer-friendly Version](#)[Interactive Discussion](#)

than albedo feedbacks when bare ground in the arctic, which has zero transpiration, was replaced with deciduous broadleaf trees. Conversely, our study suggests that ET feedbacks are relatively unimportant for changing boreal forests: albedo-driven cooling from younger stands switched the sign of uncoupled ET anomalies and reduced atmospheric water. This argues that the dominant biophysical driver of high-latitude vegetation feedbacks to climate is context-dependent. Researchers must consider the dynamics of all relevant energy fluxes when assessing terrestrial-atmosphere coupling in boreal and arctic biomes.

Our increased burn area scenarios are assumed to coincide with climate warming, as projected by numerous research groups, and therefore provide a negative feedback. During the last 50 yr, boreal North America has been warming by about 0.3–0.4 °C per decade in summer (Chapin III et al., 2005), and nearly twice that in winter (Arctic Climate Impact Assessment, 2004). Based on the NFDBs, burn area has been increasing by approximately 0.39 Mha yr⁻¹ per decade over the region during this same time period. Our modeling results therefore suggest that land surface changes due to fires have contributed a negative feedback of approximately 5–7 % in the region. Looking towards the future, recent syntheses project a 3–5 °C increase in annual surface air temperature, and 5–8 °C increase during the winter, over boreal North America by 2100 (Arctic Climate Impact Assessment, 2004; Christensen et al., 2007). Based on our simulations, fire-mediated land surfaces could contribute a negative feedback of 2–4 % and 11–18 % annually, and 4–6 % and 14–23 % during winter, to this warming under a doubling and quadrupling of burn area, respectively.

It must be noted that our simulated climate impacts will not occur independently, but instead develop amidst an evolving 21st century landscape and climate. Ocean and sea ice feedbacks will respond non-linearly to an overall warming trend, and may not interact with this smaller cooling footprint to the same degree. A longer snow-free season will decrease the magnitude of spring albedo effects. Boreal and arctic vegetation will also likely respond to 21st century climate via mechanisms other than fire. With permafrost melting and surface air warming, we have witnessed increases in the northern

Cooling from boreal forest fires

B. M. Rogers et al.

Title Page

Abstract

Introduction

Conclusions

References

Tables

Figures

◀

▶

◀

▶

Back

Close

Full Screen / Esc

Printer-friendly Version

Interactive Discussion



boundaries and productivities of boreal shrubs during the last several decades (Sturm et al., 2001; Beck and Goetz, 2011), leading to an estimated $+0.2 \text{ W m}^{-2}$ of atmospheric heating per decade since 1950 (Chapin III et al., 2005). It has been estimated that shrubland coverage under future climates has the potential to add over 6 W m^{-2} of atmospheric heating (Chapin III et al., 2005), with additional warming coming from atmospheric water vapor feedbacks via shrub transpiration (Bonfils et al., 2012). Boreal forests, in contrast, have become less productive due to drought stress from higher temperatures and longer growing seasons (Beck and Goetz, 2011), and may take much longer than shrubs to migrate northward (Chapin III and Starfield, 1997; Rupp et al., 2001).

Boreal fires also affect climate in ways other than land surface characteristics. Pyrogenic aerosols released during combustion interact with the atmosphere and planetary radiation balance in complex ways. Typically, direct effects from fire aerosols produce warming in the local atmosphere but cooling at the surface (Stone et al., 2008). In the arctic, however, top of atmosphere energy balance depends on the albedo of the underlying surface (Ramanathan et al., 2001; Stone et al., 2008), and deposited black carbon can produce strong local warming and melting of snow and sea ice (Flanner et al., 2007; Ramanathan and Carmichael, 2008). When indirect effects on cloud formation are considered, the atmosphere is further cooled and radiative forcing becomes strongly negative (Ward et al., 2012).

Fires also release greenhouse gases: mostly CO_2 , but also CH_4 and N_2O , which are well-mixed and produce positive global radiative forcings. A 50 % increase in circum-polar boreal forest fires has the potential to release 27–51 Pg C, or $0.33\text{--}0.8 \text{ Pg C yr}^{-1}$ during the next 50–100 yr (Kasischke et al., 1995). Model estimates suggest that Canada's fire emissions may increase considerably more than this, driven mostly by increasing burn area (Amiro et al., 2009). The overall biogeochemical forcing, however, includes ecosystem recovery rates, which are different for different carbon pools and depend on climate, fire severity, and species composition. Surface biophysical, aerosol, and biogeochemical effects from fires must all be considered when assessing the overall

impacts of fires on climate. For one set of fires in Alaska, Randerson et al. (2006) found that surface albedo dominates the radiative budget, approximately doubling the other positive forcings in magnitude and leading to an overall negative radiative forcing. O'Halloran et al. (2012) documented a similar result using six sites in Manitoba, Canada, although the albedo and biogeochemical forcings were closer in magnitude. However, aerosol impacts were neglected in O'Halloran et al. (2012), and aerosol indirect effects were not included in Randerson et al. (2006). Neither study considered downwind land and ocean ecosystem responses to nutrient deposition or fire-induced changes in regional climate, including changes in the fraction of diffusely photosynthetically active radiation.

While we attempted to quantify several influential yet accessible uncertainties, a variety of potential biases and errors remain untreated. One outstanding issue involves post-fire succession. Simulated vegetation distributions were direct functions of succession, which is highly uncertain. Our approach supported the hypothesis that forests in boreal North America primarily re-grow through relay floristics, wherein deciduous trees prevail during mid-succession. Although this has a large potential for error, comparisons of energy budgets to observations were favorable, and halving the prescribed deciduous fraction had a relatively minor impact on energy budgets (Table 5). More pertinent for uncertainty, however, is the assumption that these trajectories are constant across space, time, and levels of fire severity. Observations suggest post-fire succession is influenced by geography and topography, and depends on pre-fire conditions. Specifically, higher proportions of deciduous trees establish and survive during succession on south facing slopes with improved drainage, and with greater pre-fire deciduous fractions, higher fire severity, and increased fire frequency. Deciduous forests are less flammable. Using a statistical model of fire occurrence and spread for a region in Alberta, Krawchuk and Cumming (2011) estimated a relative negative biotic feedback on burn area of 23 % under a scenario that otherwise predicted an increase of 61 %. Our simulations suggest a 22 % relative reduction with a 100 % increase in burn area. However, it has been suggested that an intensifying fire regime may not just increase

BGD

9, 12087–12136, 2012

Cooling from boreal forest fires

B. M. Rogers et al.

Title Page

Abstract

Introduction

Conclusions

References

Tables

Figures

◀

▶

◀

▶

Back

Close

Full Screen / Esc

Printer-friendly Version

Interactive Discussion



deciduous fractions, but lead to an alternate stability point of deciduous forest dominance (Johnstone et al., 2010a). A landscape dominated by deciduous trees, instead of conifers and patches of mixed stands, may display entirely different fire dynamics.

Fire severity, or carbon combusted per unit burn area, may also change in the future and alter mortality and succession. While some studies suggest an increase in severity due to climate (e.g. Harden et al., 2000; Rogers et al., 2011) and drier forest floor organic matter (OM) (Bonan et al., 1990), less flammable deciduous forests with increasingly smaller pools of OM may decrease severity. Moreover, changes to boreal vegetation may alter the emissions of organic vapors that impact cloud condensation nuclei and regional cloud formation (Spracklen et al., 2008). Our study did not consider either of these effects.

We did not directly characterize biases from our main driving datasets, including MODIS land cover and burn area from the NFDBs. There are known omissions in the NFDBs (Kasischke et al., 2002) and biases in high-latitude vegetation from MCD12Q1 (Friedl et al., 2010). However, our varying burn area prescriptions largely bypass minor errors in historical burn area, and vegetation was indirectly validated through comparisons of post-fire energy exchange. Additionally, we did not attempt to address over-arching model biases in either the CLM land model or the CESM climate model. Other Earth system models with different representations of energy and water fluxes, atmospheric circulation, sea ice dynamics, ocean fluxes, and climate sensitivity may display different quantitative and qualitative responses. We also include no representation of time scale in our equilibrium simulations, although landscape changes are implicitly assumed to take place over one to two centuries.

Further work that expands the spatial domain, forcing agents, and modeling techniques considered here is needed to better clarify the impacts of boreal forest fires on climate and ecosystems over the next century. Eurasia must be considered, as it contains approximately twice the coverage of boreal forest as does North America, with distinct and heterogeneous ecology and fire regimes. Although surface forcings may dominate in high latitudes, ecosystem carbon budgets and fire emissions of aerosols

BGD

9, 12087–12136, 2012

Cooling from boreal forest fires

B. M. Rogers et al.

Title Page

Abstract

Introduction

Conclusions

References

Tables

Figures

◀

▶

◀

▶

Back

Close

Full Screen / Esc

Printer-friendly Version

Interactive Discussion



and greenhouse gasses must be included in order to adequately represent the full climate impacts. With the continuing development of global land models, dynamic fire and vegetation modules should be used to capture the non-linear and interacting responses of succession, burn area, and fire severity to climate change. Additionally, analyses that better characterize spatial and temporal relationships between succession, fire intensity, burn severity, and surface forcings can provide better constraints.

5 Conclusions

Modeling results suggest that increases in fire activity across North American boreal forests, similar to those projected by various research groups for the 21st century, would result in a younger landscape that cools the high latitude atmosphere. Amplified by ocean and sea ice feedbacks, impacts are dominant in February–April when solar insolation is moderate and albedo changes are large. Annually, this would provide only a minor reduction to high-latitude climate warming with a doubling of historical burn area, but could decrease warming by nearly 25% in the winter with a quadrupling of burn area. Although this result implies a negative feedback to climate change, future work is necessary to adequately quantify the spatial and seasonally-varying effects from all fire forcing agents: landscape biophysical, aerosol emissions, and greenhouse gases. While landscape effects cool locally, the impacts of aerosol emissions are uncertain and pyrogenic greenhouse gases warm the global atmosphere.

This work implies that representing fire and vegetation succession in Earth system models is crucial in order to project high-latitude climate and ecosystem responses to anthropogenic forcings. Dynamic vegetation models that simulate distinct age, functional, and structural classes can help characterize contemporary succession in locations with limited data, and project how succession and migration will ultimately shape future distributions. These should be coupled to mechanistic fire models that respond to climate and represent spatially-varying fuel dynamics to simulate fires of different types and intensities. Until such models are validated against historical and paleo archives

BGD

9, 12087–12136, 2012

Cooling from boreal forest fires

B. M. Rogers et al.

Title Page

Abstract

Introduction

Conclusions

References

Tables

Figures

◀

▶

◀

▶

Back

Close

Full Screen / Esc

Printer-friendly Version

Interactive Discussion



and fully integrated into climate models, we can only provide boundary conditions for possible future impacts.

Finally, while this study suggests that boreal forest fires can provide regional negative feedbacks to warming, it must be noted that fires are associated with a number of harmful non-climate impacts. Fires decrease air quality, leading to deleterious health effects (Bowman and Johnston, 2005; Johnston et al., 2012), and damage homes and tourism industries throughout the world. While regular low-intensity fires may increase the health of forests in certain regions, large conflagrations negatively impact many ecosystem services, flora, and fauna.

Acknowledgements. This work was funded by a US National Science Foundation Graduate Research Fellowship (ID 2009067341) to Rogers and the US National Science Foundation Decadal and Regional Climate Prediction using Earth System Models (EaSM) grants to Randerson and Bonan (NSF-AGS1048890). We thank Amber J. Soja for guidance on fire and ecology issues, Samuel Levis for CLM advice, Michael Goulden for counseling on model validation, and Ursula Carliss for editorial comments. This work was in part supported by the National Center for Atmospheric Research Advanced Study Program.

References

- Amiro, B. D., MacPherson, J. I., and Desjardins, R. L.: BOREAS flight measurements of forest-fire effects on carbon dioxide and energy fluxes, *Agr. Forest Meteorol.*, 96, 199–208, doi:10.1016/S0168-1923(99)00050-7, 1999.
- Amiro, B. D., Todd, J. B., Wotton, B. M., Logan, K. A., Flannigan, M. D., Stocks, B. J., Mason, J. A., Martell, D. L., and Hirsch, K. G.: Direct carbon emissions from Canadian forest fires, 1959–1999, *Can. J. Forest Res.*, 31, 512–525, doi:10.1139/cjfr-31-3-512, 2001.
- Amiro, B. D., Orchansky, A. L., Barr, A. G., Black, T. A., Chambers, S. D., Chapin III, F. S., Goulden, M. L., Litvak, M., Liu, H. P., McCaughey, J. H., McMillan, A., and Randerson, J. T.: The effect of post-fire stand age on the boreal forest energy balance, *Agr. Forest Meteorol.*, 140, 41–50, doi:10.1016/j.agrformet.2006.02.014, 2006.
- Amiro, B. D., Cantin, A., Flannigan, M. D., and De Groot, W. J.: Future emissions from Canadian boreal forest fires, *Can. J. Forest Res.*, 39, 383–395, doi:10.1139/X08-154, 2009.

Cooling from boreal forest fires

B. M. Rogers et al.

Title Page

Abstract

Introduction

Conclusions

References

Tables

Figures

◀

▶

◀

▶

Back

Close

Full Screen / Esc

Printer-friendly Version

Interactive Discussion



- Arctic Climate Impact Assessment: Impacts of a Warming Arctic, Cambridge University Press, New York, NY, 2004.
- Bala, G., Caldeira, K., Wickett, M., Phillips, T. J., Lobell, D. B., Delire, C., and Mirin, A.: Combined climate and carbon-cycle effects of large-scale deforestation, *P. Natl. Sci. USA*, 104, 6550–6555, doi:10.1073/pnas.0608998104, 2007.
- Bailey, D., Hannay, C., Holland, M. and Neale, R.: Slab Ocean Model Forcing, National Center for Atmospheric Research, Boulder, CO, 2011.
- Balshi, M. S., McGuire, A. D., Duffy, P., Flannigan, M., Walsh, J., and Melillo, J.: Assessing the response of area burned to changing climate in western boreal North America using a Multivariate Adaptive Regression Splines (MARS) approach, *Glob. Change Biol.*, 15, 578–600, doi:10.1111/j.1365-2486.2008.01679.x, 2009.
- Bartholome, E. and Belward, A. S.: GLC2000: a new approach to global land cover mapping from Earth observation data, *Int. J. Remote Sens.*, 26, 1959–1977, doi:10.1080/01431160412331291297, 2005.
- Beck, P. S. A. and Goetz, S. J.: Satellite observations of high northern latitude vegetation productivity changes between 1982 and 2008: ecological variability and regional differences, *Environ. Res. Lett.*, 6, 045501, doi:10.1088/1748-9326/6/4/045501, 2011.
- Beck, P. S. A., Goetz, S. J., Mack, M. C., Alexander, H. D., Jin, Y., Randerson, J. T., and Lorant, M. M.: The impacts and implications of an intensifying fire regime on Alaskan boreal forest composition and albedo, *Glob. Change Biol.*, 17, 2853–2866, doi:10.1111/j.1365-2486.2011.02412.x, 2011.
- Bergeron, Y.: Species and stand dynamics in the mixed woods of Quebec's southern boreal forest, *Ecology*, 81, 1500–1516, doi:10.1890/0012-9658(2000)081[1500:SASDIT]2.0.CO;2, 2000.
- Betts, R. A.: Offset of the potential carbon sink from boreal forestation by decreases in surface albedo, *Nature*, 408, 187–190, doi:10.1038/35041545, 2000.
- Bonan, G. B.: A computer model of the solar radiation, soil moisture, and soil thermal regimes in boreal forests, *Ecol. Modell.*, 45, 275–306, doi:10.1016/0304-3800(89)90076-8, 1989.
- Bonan, G. B. and Shugart, H. H.: Environmental factors and ecological processes in boreal forests, *Annu. Rev. Ecol. Syst.*, 20, 1–28, doi:10.1146/annurev.es.20.110189.000245, 1989.
- Bonan, G. B., Shugart, H. H. and Urban, D. L.: The sensitivity of some high-latitude boreal forests to climatic parameters, *Clim. Change*, 16, 9–29, doi:10.1007/BF00137344, 1990.

Cooling from boreal forest fires

B. M. Rogers et al.

Title Page

Abstract

Introduction

Conclusions

References

Tables

Figures

◀

▶

◀

▶

Back

Close

Full Screen / Esc

Printer-friendly Version

Interactive Discussion



Cooling from boreal forest fires

B. M. Rogers et al.

Title Page

Abstract

Introduction

Conclusions

References

Tables

Figures

◀

▶

◀

▶

Back

Close

Full Screen / Esc

Printer-friendly Version

Interactive Discussion



- Bonan, G. B., Pollard, D., and Thompson, S. L.: Effects of boreal forest vegetation on global climate, *Nature*, 359, 716–718, doi:10.1038/359716a0, 1992.
- Bond-Lamberty, B., Peckham, S. D., Gower, S. T., and Ewers, B. E.: Effects of fire on regional evapotranspiration in the Central Canadian boreal forest, *Glob. Change Biol.*, 15, 1242–1254, doi:10.1111/j.1365-2486.2008.01776.x, 2009.
- Bonfils, C. J. W., Phillips, T. J., Lawrence, D. M., Cameron-Smith, P., Riley, W. J., and Subin, Z. M.: On the influence of shrub height and expansion on northern high latitude climate, *Environ. Res. Lett.*, 7, 015503, doi:10.1088/1748-9326/7/1/015503, 2012.
- Bontemps, S., Defourny, P., Van Bogaert, E., Kalogirou, V., and Arino, O.: GLOBCOVER 2009: products description and validation report, available at: https://globcover.s3.amazonaws.com/LandCover2009/GLOBCOVER2009_Validation_Report_2.2.pdf, 2, 2011.
- Bowman, D. M. J. S. and Johnston, F. H.: Wildfire smoke, fire management, and human health, *EcoHealth*, 2, 76–80, 2005.
- Carcaillet, C., Bergeron, Y., Richard, P. J. H., Fréchette, B., Gauthier, S. and Prairie, Y. T.: Change of fire frequency in the eastern Canadian boreal forests during the Holocene: does vegetation composition or climate trigger the fire regime?, *J. Ecol.*, 89, 930–946, doi:10.1111/j.1365-2745.2001.00614.x, 2001.
- Chambers, S. D. and Chapin III, F. S.: Fire effects on surface-atmosphere energy exchange in Alaskan black spruce ecosystems: Implications for feedbacks to regional climate, *J. Geophys. Res.-Atmos.*, 107, 8145, doi:10.1029/2001JD000530, 2002.
- Chambers, S. D., Beringer, J., Randerson, J. T., and Chapin III, F. S.: Fire effects on net radiation and energy partitioning: Contrasting responses of tundra and boreal forest ecosystems, *J. Geophys. Res.*, 110, D09106, doi:10.1029/2004JD005299, 2005.
- Chapin III, F. S. and Starfield, A. M.: Time lags and novel ecosystems in response to transient climatic change in arctic Alaska, *Climatic Change*, 35, 449–461, 1997.
- Chapin III, F. S., McGuire, A. D., Randerson, J., Pielke, R., Baldocchi, D., Hobbie, S. E., Roulet, N., Eugster, W., Kasischke, E., Rastetter, E. B., Zimov, S. A., and Running, S. W.: Arctic and boreal ecosystems of Western North America as components of the climate system, *Glob. Change Biol.*, 6, 211–223, doi:10.1046/j.1365-2486.2000.06022.x, 2000.
- Chapin III, F. S., Sturm, M., Serreze, M. C., McFadden, J. P., Key, J. R., Lloyd, A. H., McGuire, A. D., Rupp, T. S., Lynch, A. H., and Schimel, J. P.: Role of land-surface changes in arctic summer warming, *science*, 310, 657–660, doi:10.1126/science.1117368, 2005.

Cooling from boreal forest fires

B. M. Rogers et al.

Title Page

Abstract

Introduction

Conclusions

References

Tables

Figures

◀

▶

◀

▶

Back

Close

Full Screen / Esc

Printer-friendly Version

Interactive Discussion



Chapin III, F. S., Hollingsworth, T., Murray, D. F., Viereck, L. A., and Walker, M. D.: Successional processes in the Alaskan Boreal Forest, in: *Alaska's Changing Boreal Forest*, edited by: Chapin III, F. S., Oswood, M. W., Van Cleve, K., Viereck, L. A., and Verbyla, D. L., Oxford University Press, New York, NY, 100–120, 2006.

Christensen, J. H., Hewitson, B., Busuioc, A., Chen, A., Gao, X., Held, R., Jones, R., Kolli, R. K., Kwon, W. K., Laprise, R., Reuda, V. M., Mearns, L., Menendez, C. G., Raisanen, J., Rinke, A., Sarr, A., and Whetton, P.: Regional climate projections, in: *Climate Change, 2007: The Physical Science Basis. Contribution of Working group I to the Fourth Assessment Report of the Intergovernmental Panel on Climate Change*, Cambridge Univ. Press, New York, 847–940, 2007.

Cumming, S. G.: Forest Type and Wildfire in the Alberta Boreal Mixedwood: What Do Fires Burn?, *Ecol. Appl.*, 11, 97–110, doi:10.2307/3061059, 2001.

DeFries, R. S. and Hansen, M.: ISLSCP II University of Maryland Global Land Cover Classifications, 1992–1993, in: *ISLSCP Initiative II Collection. Data set*, edited by: Hall, F. G., Colatz, G., Meeson, B., Los, S., de Colstoun, B., and Landis, D., Oak Ridge National Laboratory Distributed Active Archive Center, Oak Ridge, TN, USA, available at: <http://daac.ornl.gov>, 2010.

De Grandpré, L., Morissette, J., and Gauthier, S.: Long-term post-fire changes in the northeastern boreal forest of Quebec, *J. Veg. Sci.*, 11, 791–800, 2000.

de Noblet, N. I., Prentice, I. C., Joussaume, S., Texier, D., Botta, A. and Haxeltine, A.: Possible role of atmosphere-biosphere interactions in triggering the Last Glaciation, *Geophys. Res. Lett.*, 23, 3191–3194, doi:10.1029/96GL03004, 1996.

Dyrness, C. T., Viereck, L. A. and Van Cleve, K.: Fire in Taiga Communities of Interior Alaska, in *Forest ecosystems in the Alaskan taiga*, edited by: Van Cleve, K., Chapin, F. S. I., Flanagan, P. W., Viereck, L. A., and Dyrness, C. T., 74–86, Springer-Verlag, New York, NY., 1986.

Eugster, W., Rouse, W. R., Sr, R. A. P., Mcfadden, J. P., Baldocchi, D. D., Kittel, T. G. F., Chapin III, F. S., Liston, G. E., Vidale, P. L., Vaganov, E., and Chambers, S.: Land-atmosphere energy exchange in Arctic tundra and boreal forest: available data and feedbacks to climate, *Glob. Change Biol.*, 6, 84–115, doi:10.1046/j.1365-2486.2000.06015.x, 2000.

Euskirchen, E. S., McGuire, A. D., Chapin III, F. S., and Rupp, T. S.: The changing effects of Alaska's boreal forests on the climate system, *Can. J. Forest Res.*, 40, 1336–1346, doi:10.1139/X09-209, 2010.

Cooling from boreal forest fires

B. M. Rogers et al.

Title Page

Abstract

Introduction

Conclusions

References

Tables

Figures

◀

▶

◀

▶

Back

Close

Full Screen / Esc

Printer-friendly Version

Interactive Discussion



- Euskirchen, E. S., McGuire, A. D., Rupp, T. S., Chapin III, F. S., and Walsh, J. E.: Projected changes in atmospheric heating due to changes in fire disturbance and the snow season in the Western Arctic, 2003–2100, *J. Geophys. Res.*, 114, G04022, doi:10.1029/2009JG001095, 2009.
- 5 Fastie, C. L., Lloyd, A. H., and Doak, P.: Fire history and postfire forest development in an upland watershed of interior Alaska, *J. Geophys. Res.*, 108, 8150, doi:10.1029/2001JD000570, 2003.
- Flanner, M. G., Zender, C. S., Randerson, J. T. and Rasch, P. J.: Present-day climate forcing and response from black carbon in snow, *J. Geophys. Res.*, 112, D11202, doi:10.1029/2006JD008003, 2007.
- 10 Flannigan, M. D. and Harrington, J. B.: A study of the relation of meteorological variables to monthly provincial area burned by wildfire in Canada (1953–80), *J. Appl. Meteorol.*, 27, 441–452, doi:10.1175/1520-0450(1988)027<0441:ASOTRO>2.0.CO;2, 1988.
- Flannigan, M. D. and Van Wagner, C. E.: Climate change and wildfire in Canada, *Can. J. Forest Res.*, 21, 66–72, doi:10.1139/x91-010, 1991.
- 15 Flannigan, M. D., Bergeron, Y., Engelmark, O., and Wotton, B. M.: Future wildfire in circum-boreal forests in relation to global warming, *J. Veg. Sci.*, 9, 469–476, doi:10.2307/3237261, 1998.
- Flannigan, M. D., Logan, K. A., Amiro, B. D., Skinner, W. R., and Stocks, B. J.: Future area burned in Canada, *Climatic Change*, 72, 1–16, doi:10.1007/s10584-005-5935-y, 2005.
- 20 Friedl, M. A., McIver, D. K., Hodges, J. C. F., Zhang, X. Y., Muchoney, D., Strahler, A. H., Woodcock, C. E., Gopal, S., Schneider, A., and Cooper, A.: Global land cover mapping from MODIS: algorithms and early results, *Remote Sens. Environ.*, 83, 287–302, doi:10.1016/S0034-4257(02)00078-0, 2002.
- Friedl, M. A., Sulla-Menashe, D., Tan, B., Schneider, A., Ramankutty, N., Sibley, A., and Huang, X.: MODIS Collection 5 global land cover: algorithm refinements and characterization of new datasets, *Remote Sens. Environ.*, 114, 168–182, doi:10.1016/j.rse.2009.08.016, 2010.
- Gallimore, R. G. and Kutzbach, J. E.: Role of orbitally induced changes in tundra area in the onset of glaciation, *Nature*, 381, 503–505, doi:10.1038/381503a0, 1996.
- 30 Gent, P. R., Danabasoglu, G., Donner, L. J., Holland, M. M., Hunke, E. C., Jayne, S. R., Lawrence, D. M., Neale, R. B., Rasch, P. J., Vertenstein, M., Worley, P. H., Yang, Z. L., and

Cooling from boreal forest fires

B. M. Rogers et al.

Title Page

Abstract

Introduction

Conclusions

References

Tables

Figures

◀

▶

◀

▶

Back

Close

Full Screen / Esc

Printer-friendly Version

Interactive Discussion



Zhang, M.: The Community Climate System Model Version 4, *J. Climate*, 24, 4973–4991, doi:10.1175/2011JCLI4083.1, 2011.

Gillett, N. P., Weaver, A. J., Zwiers, F. W., and Flannigan, M. D.: Detecting the effect of climate change on Canadian forest fires, *Geophys. Res. Lett.*, 31, L18211, doi:10.1029/2004GL020876, 2004.

Harden, J. W., Trumbore, S. E., Stocks, B. J., Hirsch, A., Gower, S. T., O'Neill, K. P., and Kasischke, E. S.: The role of fire in the boreal carbon budget, *Glob. Change Biol.*, 6, 174–184, doi:10.1046/j.1365-2486.2000.06019.x, 2000.

Heinselman, M. L.: Fire intensity and frequency as factors in the disturbance and structure of northern ecosystems, Honolulu, HI., 1978.

Horton, D. E., Poulsen, C. J. and Pollard, D.: Influence of high-latitude vegetation feedbacks on late Palaeozoic glacial cycles, *Nat. Geosci.*, 3, 572–577, doi:10.1038/NCEO922, 2010.

Jahn, A., Sterling, K., Holland, M. M., Kay, J. E., Maslanik, J. A., Bitz, C. M., Bailey, D. A., Stroeve, J., Hunke, E. C., Lipscomb, W. H., and Pollak, D. A.: Late-twentieth-century simulation of arctic sea ice and ocean properties in the CCSM4, *J. Climate*, 25, 1431–1452, doi:10.1175/JCLI-D-11-00201.1, 2012.

Jin, Y., Randerson, J. T., Goetz, S. J., Beck, P. S. A., Loranty, M. M., and Goulden, M. L.: The influence of burn severity on postfire vegetation recovery and albedo change during early succession in North American boreal forests, *J. Geophys. Res.*, 117, G01036, doi:10.1029/2011JG001886, 2012.

Johnston, F. H., Henderson, S. B., Chen, Y., Randerson, J. T., Marlier, M., DeFries, R. S., Kinney, P., Bowman, D. M. J. S., and Brauer, M.: Estimated Global Mortality Attributable to Smoke from Landscape Fires, *Environ. Health Persp.*, 120, 695–701, doi:10.1289/ehp.1104422, 2012.

Johnstone, J. F. and Chapin III, F. S.: Fire interval effects on successional trajectory in boreal forests of northwest Canada, *Ecosystems*, 9, 268–277, doi:10.1007/s10021-005-0061-2, 2006.

Johnstone, J. F. and Kasischke, E. S.: Stand-level effects of soil burn severity on postfire regeneration in a recently burned black spruce forest, *Can. J. Forest. Res.*, 35, 2151–2163, doi:10.1139/X05-087, 2005.

Johnstone, J. F., Chapin, F. S., Hollingsworth, T. N., Mack, M. C., Romanovsky, V., and Turetsky, M.: Fire, climate change, and forest resilience in interior Alaska, *Can. J. Forest Res.*, 40, 1302–1312, doi:10.1139/X10-061, 2010a.

Cooling from boreal forest fires

B. M. Rogers et al.

Title Page

Abstract

Introduction

Conclusions

References

Tables

Figures

◀

▶

◀

▶

Back

Close

Full Screen / Esc

Printer-friendly Version

Interactive Discussion



- Johnstone, J. F., Hollingsworth, T. N., Chapin III, F. S., and Mack, M. C.: Changes in fire regime break the legacy lock on successional trajectories in Alaskan boreal forest, *Glob. Change Biol.*, 16, 1281–1295, doi:10.1111/j.1365-2486.2009.02051.x, 2010b.
- 5 Kasischke, E. S., Christensen, N. L. and Stocks, B. J.: Fire, Global Warming, and the Carbon Balance of Boreal Forests, *Ecol. Appl.*, 5, 437–451, doi:10.2307/1942034, 1995.
- Kasischke, E. S. and Turetsky, M. R.: Recent changes in the fire regime across the North American boreal region – spatial and temporal patterns of burning across Canada and Alaska, *Geophys. Res. Lett.*, 33, L09703, doi:10.1029/2006GL025677, 2006.
- 10 Kasischke, E. S., Barry, D., and Williams, D.: Analysis of the patterns of large fires in the boreal forest region of Alaska, *Int. J. Wildland Fire*, 11, 131–144, doi:10.1071/WF02023, 2002.
- Kasischke, E. S., Verbyla, D. L., Rupp, T. S., McGuire, A. D., Murphy, K. A., Jandt, R., Barnes, J. L., Hoy, E. E., Duffy, P. A., Calef, M., and Turetsky, M. R.: Alaska's changing fire regime implications for the vulnerability of its boreal forests, *Can. J. Forest Res.*, 40, 1313–1324, doi:10.1139/X10-098, 2010.
- 15 Krawchuk, M. A. and Cumming, S. G.: Effects of biotic feedback and harvest management on boreal forest fire activity under climate change, *Ecol. Appl.*, 21, 122–136, doi:10.1890/09-2004.1, 2011.
- Krawchuk, M. A., Cumming, S. G., and Flannigan, M. D.: Predicted changes in fire weather suggest increases in lightning fire initiation and future area burned in the mixedwood boreal forest, *Climatic Change*, 92, 83–97, doi:10.1007/s10584-008-9460-7, 2009.
- 20 Kurkowski, T. A., Mann, D. H., Rupp, T. S., and Verbyla, D. L.: Relative importance of different secondary successional pathways in an Alaskan boreal forest, *Can. J. Forest Res.*, 38, 1911–1923, doi:10.1139/X08-039, 2008.
- Kurz, W. A. and Apps, M. J.: A 70-year retrospective analysis of carbon fluxes in the Canadian forest sector, *Ecol. Appl.*, 9, 526–547, doi:10.2307/2641142, 1999.
- 25 Landrum, L., Otto-Bliesner, B. L., Conley, A., Lawrence, P. J., Rosenbloom, N., and Teng, H.: Last millennium climate and its variability in CCSM4, *J. Climate*, in press, 2012.
- Lavoie, N.: Variation in flammability of jack pine/black spruce stands with time since the last fire, Dissertation, University of Alberta, Edmonton, Canada, 2004.
- 30 Lawrence, D. M., Oleson, K. W., Flanner, M. G., Thornton, P. E., Swenson, S. C., Lawrence, P. J., Zeng, X., Yang, Z.-L., Levis, S., Sakaguchi, K., Bonan, G. B., and Slater, A. G.: Parameterization improvements and functional and structural advances in Version 4 of the Community Land Model, *J. Adv. Model. Earth Syst.*, 3, doi:10.1029/2011MS000045, 2011.

Cooling from boreal forest fires

B. M. Rogers et al.

Title Page

Abstract

Introduction

Conclusions

References

Tables

Figures

◀

▶

◀

▶

Back

Close

Full Screen / Esc

Printer-friendly Version

Interactive Discussion



- Lawrence, P. J. and Chase, T. N.: Representing a new MODIS consistent land surface in the Community Land Model (CLM3. 0), *J. Geophys. Res.*, 112, G01023, doi:10.1029/2006JG000168, 2007.
- Liu, H. and Randerson, J. T.: Interannual variability of surface energy exchange depends on stand age in a boreal forest fire chronosequence, *J. Geophys. Res.*, 113, G01006, doi:10.1029/2007JG000483, 2008.
- Liu, H., Randerson, J. T., Lindfors, J., and Chapin III, F. S.: Changes in the surface energy budget after fire in boreal ecosystems of interior Alaska: An annual perspective. *J. Geophys. Res.*, 110, D13101, doi:10.1029/2004JD005158, 2005.
- Lloyd, A. H., Edwards, M. E., Finney, B. P., Lynch, J. A., Barber, V., and Bigelow, N. H.: Holocene development of the Alaskan Boreal Forest, in: *Alaska's Changing Boreal Forest*, edited by: Chapin III, F. S., Oswood, M. W., Van Cleve, K., Viereck, L. A., and Verbyla, D. L., Oxford University Press, New York, NY, 62–80, 2006.
- Loveland, T. R., Reed, B. C., Brown, J. F., Ohlen, D. O., Zhu, Z., Yang, L., and Merchant, J. W.: Development of a global land cover characteristics database and IGBP DISCover from 1 km AVHRR data, *Int. J. Remote Sens.*, 21, 1303–1330, doi:10.1080/014311600210191, 2000.
- Lyons, E. A., Jin, Y., Randerson, J. T., and Hall, C.: Changes in surface albedo after fire in boreal forest ecosystems of interior Alaska assessed using MODIS satellite observations, *J. Geophys. Res.*, 113, G02012, doi:10.1029/2007JG000606, 2008.
- Macias Fauria, M. and Johnson, E. A.: Climate and wildfires in the North American boreal forest, *Philos. T. Roy. Soc. B*, 363, 2317–2329, doi:10.1098/rstb.2007.2202, 2008.
- Mann, D. H. and Plug, L. J.: Vegetation and soil development at an upland taiga site, Alaska, *Ecoscience*, 6, 272–285, 1999.
- McGuire, A. D., Wirth, C., Apps, M., Beringer, J., Clein, J., Epstein, H., Kicklighter, D. W., Bhatti, J., Chapin III, F. S., and Groot, B.: Environmental variation, vegetation distribution, carbon dynamics and water/energy exchange at high latitudes, *J. Veg. Sci.*, 13, 301–314, doi:10.1111/j.1654-1103.2002.tb02055.x, 2002.
- McMillan, A. M. and Goulden, M. L.: Age-dependent variation in the biophysical properties of boreal forests, *Global Biogeochem. Cy.*, 22, GB2023, doi:10.1029/2007GB003038, 2008.
- O'Halloran, T. L., Law, B. E., Goulden, M. L., Wang, Z., Barr, J. G., Schaaf, C., Brown, M., Fuentes, J. D., Goeckede, M., Black, A., and Engel, V.: Radiative forcing of natural forest disturbances, *Glob. Change Biol.*, 18, 555–565, doi:10.1111/j.1365-2486.2011.02577.x, 2012.

Cooling from boreal forest fires

B. M. Rogers et al.

Title Page

Abstract

Introduction

Conclusions

References

Tables

Figures

◀

▶

◀

▶

Back

Close

Full Screen / Esc

Printer-friendly Version

Interactive Discussion



Oleson, K. W., Niu, G. Y., Yang, Z. L., Lawrence, D. M., Thornton, P. E., Lawrence, P. J., Stockli, R., Dickinson, R. E., Bonan, G. B., Levis, S., Dai, A., and Qian, T.: Improvements to the Community Land Model and their impact on the hydrological cycle, *J. Geophys. Res.*, 113, G01021, doi:10.1029/2007JG000563, 2008.

Oleson, K. W., Lawrence, D. M., Gordon, B., Flanner, M. G., Kluzek, E., Lawrence, P. J., Levis, S., Swenson, S. C., Thornton, E., Dai, A., Decker, M., Dickinson, R., Feddes, J., Heald, C. L., Hoffman, F., Lamarque, J. F., Mahowald, N., Niu, G. Y., Qian, T., Randerson, J., Running, S., Sakaguchi, K., Slater, A., Stockli, R., Wang, A., Yang, Z. L., Zeng, X., and Zeng, X.: Technical description of version 4.0 of the Community Land Model (CLM), NCAR Technical Note, Climate and Global Dynamics Division, National Center for Atmospheric Research, Boulder, CO., 2010.

Ottoman, J., Chou, M. D., and Arking, A.: Effects of Nontropical Forest Cover on Climate, *J. Appl. Meteorol.*, 23, 762–767, doi:10.1175/1520-0450(1984)023<0762:EONFCO>2.0.CO;2, 1984.

Parisien, M. A., Peters, V. S., Wang, Y., Little, J. M., Bosch, E. M., and Stocks, B. J.: Spatial patterns of forest fires in Canada, 1980–1999, *Int. J. Wildland Fire*, 15, 361–374, doi:10.1071/WF06009, 2006.

Payette, S.: Fire as a controlling process in the North American boreal forest, in: *A Systems Analysis of the Global Boreal Forest.*, edited by: Shugart, H. H., Leemans, R., and Bonan, G. B., Cambridge University Press, New York, NY, 144–169, 1992.

Podur, J., Martell, D. L., and Knight, K.: Statistical quality control analysis of forest fire activity in Canada, *Can. J. Forest Res.*, 32, 195–205, doi:10.1139/X01-183, 2002.

Qian, T., Dai, A., Trenberth, K. E., and Oleson, K. W.: Simulation of global land surface conditions from 1948 to 2004. Part I: Forcing data and evaluations, *J. Hydrometeorol.*, 7, 953–975, doi:10.1175/JHM540.1, 2006.

Ramanathan, V., Crutzen, P. J., Kiehl, J. T. and Rosenfeld, D.: Aerosols, climate, and the hydrological cycle, *Science*, 294, 2119–2124, doi:10.1126/science.1064034, 2001.

Ramanathan, V. and Carmichael, G.: Global and regional climate changes due to black carbon, *Nat. Geosci.*, 1, 221–227, doi:10.1038/ngeo156, 2008.

Ramankutty, N. and Foley, J. A.: ISLSCP II Potential Natural Vegetation Cover, in: *ISLSCP Initiative II Collection. Data Set*, edited by: Hall, F. G., Collatz, G., Meeson, B., Los, S., de Colstoun, B., and Landis, D., Oak Ridge National Laboratory Distributed Active Archive Center, Oak Ridge, TN, USA, available at: <http://daac.ornl.gov>, 2010.

Cooling from boreal forest fires

B. M. Rogers et al.

Title Page

Abstract

Introduction

Conclusions

References

Tables

Figures

◀

▶

◀

▶

Back

Close

Full Screen / Esc

Printer-friendly Version

Interactive Discussion



- Randerson, J. T., Liu, H., Flanner, M. G., Chambers, S. D., Jin, Y., Hess, P. G., Pfister, G., Mack, M. C., Treseder, K. K., Welp, L. R., Chapin, F. S., Harden, J. W., Goulden, M. L., Lyons, E., Neff, J. C., Schuur, E. A. G., and Zender, C. S.: The impact of boreal forest fire on climate warming, *Science*, 314, 1130–1132, doi:10.1126/science.1132075, 2006.
- 5 Rogers, B. M., Neilson, R. P., Drapek, R., Lenihan, J. M., Wells, J. R., Bachelet, D. and Law, B. E.: Impacts of climate change on fire regimes and carbon stocks of the U.S. Pacific Northwest, *J. Geophys. Res.*, 116, G03037, doi:201110.1029/2011JG001695, 2011.
- Rupp, T. S., Chapin III, F. S., and Starfield, A. M.: Modeling the influence of topographic barriers on treeline advance at the forest-tundra ecotone in Northwestern Alaska, *Climatic Change*, 10 48, 399–416, doi:10.1023/A:1010738502596, 2001.
- Schimmel, J. and Granström, A.: Fuel succession and fire behavior in the Swedish boreal forest, *Can. J. Forest Res.*, 27, 1207–1216, doi:10.1139/x97-072, 1997.
- Soja, A. J., Tchebakova, N. M., French, N. H. F., Flannigan, M. D., Shugart, H. H., Stocks, B. J., Sukhinin, A. I., Parfenova, E. I., Chapin, F. S., and Stackhouse, P. W.: Climate-induced boreal forest change: predictions versus current observations, *Glob. Planet. Change*, 56, 274–296, 15 doi:10.1016/j.glopacha.2006.07.028, 2007.
- Spracklen, D. V., Bonn, B., and Carslaw, K. S.: Boreal forests, aerosols and the impacts on clouds and climate, *Philos. T. Roy. Soc. A*, 366, 4613–4626, doi:10.1098/rsta.2008.0201, 2008.
- 20 Stocks, B. J., Fosberg, M. A., Lynham, T. J., Mearns, L., Wotton, B. M., Yang, Q., Jin, J. Z., Lawrence, K., Hartley, G. R., Mason, J. A., and McKenney, D. W.: Climate change and forest fire potential in Russian and Canadian boreal forests, *Climatic Change*, 38, 1–13, doi:10.1023/A:1005306001055, 1998.
- Stocks, B. J., Mason, J. A., Todd, J. B., Bosch, E. M., Wotton, B. M., Amiro, B. D., Flannigan, M. D., Hirsch, K. G., Logan, K. A., Martell, D. L., and Skinner, W. R.: Large forest fires in Canada, 1959–1997, *J. Geophys. Res.*, 108, 8149, doi:10.1029/2001JD000484, 2003.
- 25 Stone, R. S., Anderson, G. P., Shettle, E. P., Andrews, E., Loukachine, K., Dutton, E. G., Schaaf, C., and Roman III, M. O.: Radiative impact of boreal smoke in the Arctic: Observed and modeled, *J. Geophys. Res.-Atmos.*, 113, D14S16, doi:10.1029/2007JD009657, 2008.
- 30 Sturm, M., Racine, C., and Tape, K.: Increasing shrub abundance in the Arctic, *Nature*, 411, 546–547, doi:10.1038/35079180, 2001.
- Subin, Z. M., Murphy, L. N., Li, F., Bonfils, C., and Riley, W. J.: Boreal lakes moderate seasonal and diurnal temperature variation and perturb atmospheric circulation:

Cooling from boreal forest fires

B. M. Rogers et al.

Title Page

Abstract

Introduction

Conclusions

References

Tables

Figures

◀

▶

◀

▶

Back

Close

Full Screen / Esc

Printer-friendly Version

Interactive Discussion



analyses in the Community Earth System Model 1 (CESM1), *Tellus A*, 64, 15639, doi:10.3402/tellusa.v64i0.15639, 2012.

Swann, A. L., Fung, I. Y., Levis, S., Bonan, G. B., and Doney, S. C.: Changes in Arctic vegetation amplify high-latitude warming through the greenhouse effect, *P. Natl. Acad. Sci. USA*, 107, 1295–1300, doi:10.1073/pnas.0913846107, 2010.

Thomas, G. and Rowntree, P. R.: The boreal forests and climate, *Quart. J. Roy. Meteorol. Soc.*, 118, 469–497, doi:10.1256/smsqj.50504, 1992.

Viereck, L. A.: Wildfire in the taiga of Alaska, *Quaternary Res.*, 3, 465–495, 1973.

Viereck L. A.: The effects of fire in black spruce ecosystems of Alaska and Northern Canada, in: *The Role of Fire in Northern Circumpolar Ecosystems.*, edited by: Wein, R. W. and Maclean, D. A., Wiley, New York, NY, 201–220, 1983.

Ward, D. S., Kloster, S., Mahowald, N. M., Rogers, B. M., Randerson, J. T., and Hess, P. G.: The changing radiative forcing of fires: global model estimates for past, present and future, *Atmos. Chem. Phys. Discuss.*, 12, 10535–10621, doi:10.5194/acpd-12-10535-2012, 2012.

Weber, M. G. and Flannigan, M. D.: Canadian boreal forest ecosystem structure and function in a changing climate: impact on fire regimes, *Environ. Rev.*, 5, 145–166, doi:10.1071/WF09002, 1997.

West, D. C., Botkin, D. B. and Shugart, H. H.: *Forest succession: concepts and application*, Springer-Verlag, New York, NY., 1981.

Wotton, B. M., Nock, C. A., and Flannigan, M. D.: Forest fire occurrence and climate change in Canada, *Int. J. Wildland Fire*, 19, 253–271, doi:10.1071/WF09002, 2010.

Yoshikawa, K., Bolton, W. R., Romanovsky, V. E., Fukuda, M., and Hinzman, L. D.: Impacts of wildfire on the permafrost in the boreal forests of Interior Alaska, *J. Geophys. Res.*, 108, 8148, doi:10.1029/2001JD000438, 2003.

Cooling from boreal forest fires

B. M. Rogers et al.

Title Page

Abstract Introduction

Conclusions References

Tables Figures

◀ ▶

◀ ▶

Back Close

Full Screen / Esc

Printer-friendly Version

Interactive Discussion

Table 1. Domain-wide vegetation types for historical vegetation simulations and global land cover datasets.

Vegetation Type ¹	BAX1 ²	CLM ³	MODIS IGBP ⁴	GlobCover 2009 ⁵	GLC2000 ⁶	UMD ⁷	Ramankutty Foley ⁸	GLCDv2.0 IGBP ⁹	GLCDv2.0 USGS ¹⁰
EN tree	49.4	45.0	23.4	36.5	40.3	23.9	45.1	20.5	20.5
DB tree	7.9	3.2	0.04	1.6	1.3	0.3	0.2	0.3	8.5
Shrub	22.4	23.3	25.9	1.0	11.4	19.9	0.04	39.3	8.5
Grass	2.4	10.9	2.0	6.7	0.3	3.9	0.9	0.9	0.9
Not-vegetated	7.5	7.3	0.04	0.3	1.8	2.5	1.6	1.8	0.8
Mixed forest			8.4	12.0	4.2	7.7	39.2	30.7	22.4
Woodland/savanna			26.2	20.6	15.3	40.9	0.4	0.1	0.04
Tundra				18.3	20.3		10.2		31.8

¹ Within land cover datasets, mixtures of grasses and trees were categorized as woodland/savanna, and sparse vegetation or mixtures of grasses and shrubs were classified as tundra. Mixed needleleaved forests were classified as evergreen needleleaf (EN) trees. DB = deciduous broadleaf.

² historical vegetation simulations

³ CLM input PFTs (Lawrence and Chase, 2007)

⁴ MCD12Q1 year 2003 (Friedl et al., 2002)

⁵ Bontemps et al. (2011)

⁶ North American version (Bartholome and Belward, 2005)

⁷ 1 km resolution (DeFries and Hansen, 2010)

⁸ 5 min resolution (Ramankutty and Foley, 2010)

⁹ Global Land Cover Database Version 2.0, IGBP classification (Loveland et al., 2000)

¹⁰ Global Land Cover Database Version 2.0, USGS classification (Loveland et al., 2000)



Cooling from boreal forest fires

B. M. Rogers et al.

Discussion Paper | Discussion Paper | Discussion Paper | Discussion Paper | Discussion Paper

Title Page

Abstract Introduction

Conclusions References

Tables Figures

◀ ▶

◀ ▶

Back Close

Full Screen / Esc

Printer-friendly Version

Interactive Discussion



Table 2. Domain-wide annual surface energy budget means and anomalies for uncoupled and coupled simulations.

Variable (W m ⁻²)	Simulation	Historical ² (BAx1)	Changes ¹		
			BAx0	BAx2	BAx4
downwelling shortwave	uncoupled	126.7	0	0	0
	coupled	124.3 (0.34)	-0.74 (0.47)	+0.35 (0.47)	+1.10 (0.54)
albedo ³	uncoupled	0.266	-0.018	+0.013	+0.031
	coupled	0.249 (1.0 × 10 ⁻³)	-0.017 (1.3 × 10 ⁻³)	+0.013 (1.5 × 10 ⁻³)	+0.034 (1.8 × 10 ⁻³)
absorbed shortwave	uncoupled	102.8	+1.57	-1.15	-2.69
	coupled	100.8	+1.00 (0.29)	-1.09 (0.40)	-2.56 (0.45)
downwelling longwave	uncoupled	249.1	0	0	0
	coupled	266.6 (0.52)	+0.63 (0.73)	-0.20 (0.69)	-1.62 (0.84)
upwelling longwave	uncoupled	305.4	+0.12	-0.10	-0.25
	coupled	314.8 (0.45)	+0.52 (0.64)	-0.33 (0.63)	-1.91 (0.74)
net radiation	uncoupled	46.5	+1.45	-1.04	-2.44
	coupled	52.5 (0.16)	+1.10 (0.21)	-0.96 (0.22)	-2.26 (0.25)
sensible heat	uncoupled	29.1	+1.74	-1.23	-2.83
	coupled	27.0 (0.13)	+0.79 (0.18)	-0.90 (0.18)	-1.92 (0.20)
latent heat	uncoupled	15.2	-0.27	+0.17	+0.36
	coupled	23.3 (0.08)	-0.31 (0.11)	-0.08 (0.11)	-0.44 (0.12)

¹ Differences relative to BAx1. Values in parentheses represent 95 % confidence interval widths for the differences.

² Annual means, values in parentheses represent 95 % confidence interval widths.

³ unitless

Table 3. Domain-wide climate means and anomalies from coupled simulations.

Variable	Season	Historical ²	Changes ¹		
			BAx0	BAx2	BAx4
2-m air temperature (°C)	annual	-0.1	+0.14 (0.16)	-0.12 (0.15)	-0.54 (0.18)
	winter	-14.7	+0.08 (0.44)	-0.30 (0.42)	-1.13 (0.49)
	spring	0.1	+0.31 (0.22)	-0.27 (0.24)	-0.86 (0.28)
	summer	13.4	+0.13 (0.07)	+0.07 (0.10)	-0.09 (0.12)
	fall	0.6	+0.03 (0.18)	+0.03 (0.25)	-0.09 (0.29)
precipitation (cm month ⁻¹)	annual	5.74	+0.10 (0.05)	+0.03 (0.05)	-0.0006 (0.05)
	winter	4.93	+0.13 (0.11)	+0.004 (0.11)	-0.04 (0.12)
	spring	4.60	+0.11 (0.11)	+0.06 (0.11)	-0.08 (0.12)
	summer	6.63	+0.07 (0.08)	+0.01 (0.09)	+0.03 (0.10)
	fall	6.79	+0.09 (0.13)	+0.04 (0.13)	+0.08 (0.14)
2-m specific humidity (mg kg ⁻¹)	annual	3.71	+0.02 (0.02)	+0.009 (0.02)	-0.04 (0.03)
	winter	1.48	+0.02 (0.04)	-0.02 (0.04)	-0.10 (0.05)
	spring	3.06	+0.05 (0.03)	-0.01 (0.04)	-0.08 (0.04)
	summer	6.58	+0.01 (0.04)	+0.05 (0.04)	+0.02 (0.05)
	fall	3.66	+0.003 (0.05)	+0.02 (0.05)	+0.01 (0.05)
vapor pressure deficit (Pa) ³	annual	312.6	+3.5 (3.5)	-2.3 (3.7)	-9.9(4.0)
	winter	19.2	+0.7 (0.7)	-0.6 (0.6)	-1.7 (0.7)
	spring	315.0	-0.9 (6.7)	-9.0 (7.8)	-22.5 (8.1)
	summer	704.5	+13.3 (9.8)	+0.9 (9.9)	-14.1 (11.0)
	fall	204.1	+0.8 (4.4)	-0.4 (4.5)	-1.0 (4.9)
boundary layer height (m) ⁴	annual	403.5	+4.0 (1.6)	-3.7 (1.6)	-8.9 (1.7)
	winter	213.6	+4.1 (2.4)	-0.5 (2.4)	-4.8 (2.6)
	spring	463.7	+4.8 (3.4)	-8.8 (3.7)	-22.8 (3.8)
	summer	586.5	+5.0 (3.2)	-5.4 (3.3)	-7.8 (3.9)
	fall	345.2	+2.2 (2.2)	-0.13 (2.2)	+0.2 (.24)

¹ Differences relative to BAx1. Values in parentheses represent 95 % confidence interval widths for the differences, and values in bold are significant at the $p < 0.05$ level.

² Means for the corresponding time period.

³ Calculated using mean daily relative humidity and mean daily maximum temperature.

⁴ Daily mean (including night).

Cooling from boreal forest fires

B. M. Rogers et al.

Title Page

Abstract

Introduction

Conclusions

References

Tables

Figures

◀

▶

◀

▶

Back

Close

Full Screen / Esc

Printer-friendly Version

Interactive Discussion



Cooling from boreal forest fires

B. M. Rogers et al.

Table 4. Relationships between burn area and temperature.

Unit burn area change	Season	Slope (°C per unit burn area) ¹	Coupled Model Variance ²	Sensitivity Analysis Variance ³	Pooled Variance
historical burn area (–50 % to +50 % relative to 1961–2010)	annual	–0.121	0.039	0.029	0.049 (41 %)
	winter–spring	–0.235	0.066	0.055	0.086 (37 %)
	Feb–Apr	–0.432	0.082	0.092	0.123 (28 %)
Mha yr ^{–1}	annual	–0.055	0.018	0.013	0.022 (41 %)
	winter–spring	–0.108	0.030	0.025	0.039 (37 %)
	Feb–Apr	–0.198	0.037	0.042	0.056 (28 %)

¹ Derived from BAx0, BAx1, and BAx2 coupled simulations² Calculated from 1×10^6 Monte Carlo simulations of slopes using coupled model standard errors of the means.³ Variance of net radiation during each seasonal period from four sensitivity analyses (see Table 5.)

Title Page

Abstract

Introduction

Conclusions

References

Tables

Figures

◀

▶

◀

▶

Back

Close

Full Screen / Esc

Printer-friendly Version

Interactive Discussion



Cooling from boreal forest fires

B. M. Rogers et al.

Table 5. Differences in annual energy budgets between BAx2 and BAx1 for the main simulations and four sensitivity analyses.

Variable	Main	Sensitivity Analyses ¹			
		Uniform BA increase ²	Nonflammable young stands ³	Half deciduous tree ⁴	Biotic BA feedback ⁵
albedo	+0.0132	+0.0163 (+23)	+0.0137 (+4)	+0.0110 (−17)	+0.0109 (−17)
net radiation ⁶	−1.04	−1.39 (+34)	−1.08 (+3)	−0.86 (−18)	−0.86 (−17)
sensible heat ⁶	−1.23	−1.62 (+32)	−1.27 (+3)	−1.02 (−17)	−1.02 (−17)
latent heat ⁶	+0.172	+0.205 (+19)	+0.184 (+7)	+0.149 (−13)	+0.150 (−13)

¹ Values in parentheses represent percent changes from the main simulation differences.

² Burn area was added evenly to the boreal forest fraction of all grid cells, instead of in proportion to historical burn area, as was done in the main simulations.

³ The probability of fire as a function of stand age was forced to pass through the point (0,0).

⁴ The original deciduous broadleaf tree fraction during succession was halved, and the remainder assigned to evergreen needleleaf trees.

⁵ Multipliers were applied to historical “fire probability seeds”, instead of burn area.

⁶ W m^{−2}

[Title Page](#)
[Abstract](#)
[Introduction](#)
[Conclusions](#)
[References](#)
[Tables](#)
[Figures](#)
[◀](#)
[▶](#)
[◀](#)
[▶](#)
[Back](#)
[Close](#)
[Full Screen / Esc](#)
[Printer-friendly Version](#)
[Interactive Discussion](#)

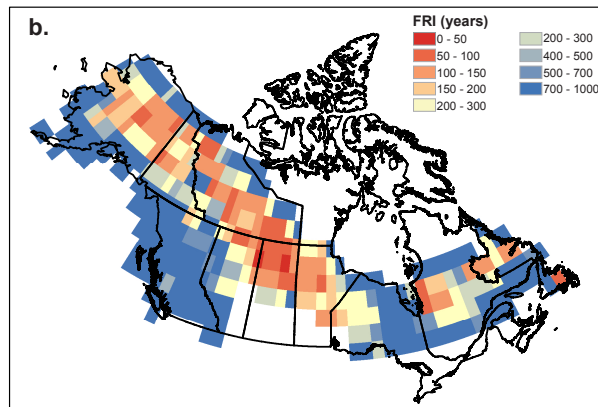
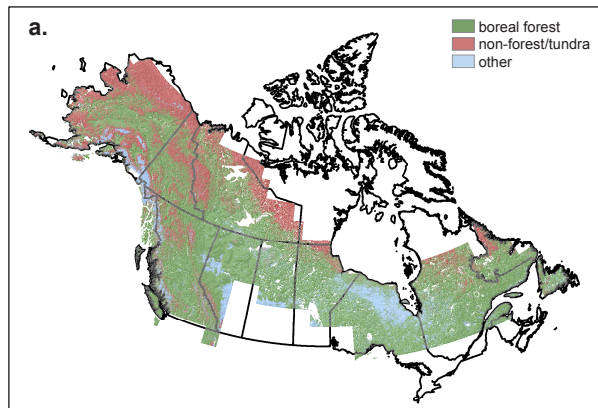



Fig. 1. 500-m land cover classification **(a)** and historical (1961–2010) mean boreal forest fire return intervals (FRIs) **(b)** within 2° CLM grid cells in the North American boreal domain. Vegetation composition varied within the boreal forest fraction of grid cells as a function of FRI, and remained static elsewhere.

Cooling from boreal forest fires

B. M. Rogers et al.

Title Page

Abstract Introduction

Conclusions References

Tables Figures

◀ ▶

◀ ▶

Back Close

Full Screen / Esc

Printer-friendly Version

Interactive Discussion



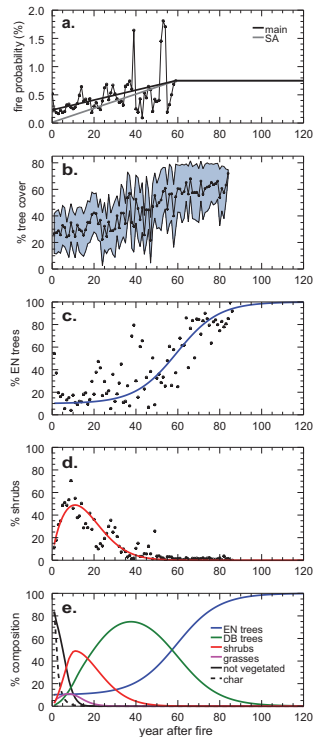


Fig. 2. Post-fire trajectories of burn probability **(a)**, tree cover **(b)**, evergreen needleleaf (EN) trees **(c)**, shrubs **(d)**, and generalized vegetation succession **(e)**. In **(a)**, a regression line was fit to annual probabilities of re-burn for years 0–60 from the Canadian National Fire Database and the Alaskan Large Fire Databases (NFDBs). The “SA” line was forced through (0,0) and used in the “nonflammable young stands” sensitivity analysis. **(b–d)** were developed using MODIS vegetation continuous fields (MOD44B) and land cover (MCD12Q1) over fire scars from the NFDBs. The shaded area in **(b)** represents ± 1 standard error. A logistic curve was fit to EN trees, and a Weibull curve to shrubs. DB = “deciduous broadleaf”. The char type in **(e)** is included as part of the non-vegetated fraction.

Cooling from boreal forest fires

B. M. Rogers et al.

Title Page

Abstract Introduction

Conclusions References

Tables Figures

◀ ▶

◀ ▶

Back Close

Full Screen / Esc

Printer-friendly Version

Interactive Discussion



Cooling from boreal forest fires

B. M. Rogers et al.

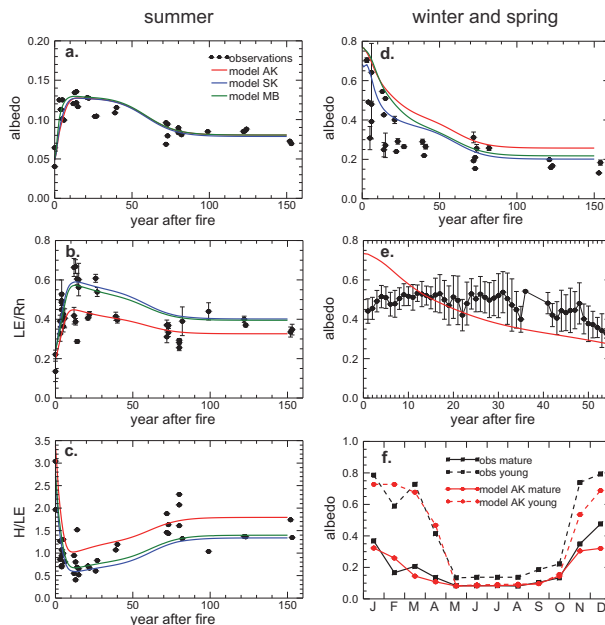


Fig. 3. Comparison of simulated to observed post-fire summer albedo (**a**), latent heat (**b**), and Bowen ratio (**c**), winter and spring albedo (**d–e**), and monthly albedo (**f**). Observations in (**a–d**) are extracted from Amiro et al. (2006) excluding the Southern Old Aspen site, (**e**) from Lyons et al. (2008), and (**f**) from Randerson et al. (2006). Modeled variables from July were chosen for (**a–c**) (observations spanned 26 June–24 July), January and February for (**d**) (observations spanned 1 January–1 March), and February and March for (**e**) (observations spanned 2 February–6 April). Modeled grid cells include field sites from Alaska (AK, 63.5° N, 145° W), Saskatchewan (SK, 54° N, 105° W), and Manitoba (MB, 55.9° N, 97.5° W). The young site in (**f**) includes years 3–5 post-fire, and mature includes approximate years 82–84. Only broadband albedo is considered. LE = latent heat, H = sensible heat, and R_n = net radiation.

Title Page

Abstract

Introduction

Conclusions

References

Tables

Figures

◀

▶

◀

▶

Back

Close

Full Screen / Esc

Printer-friendly Version

Interactive Discussion

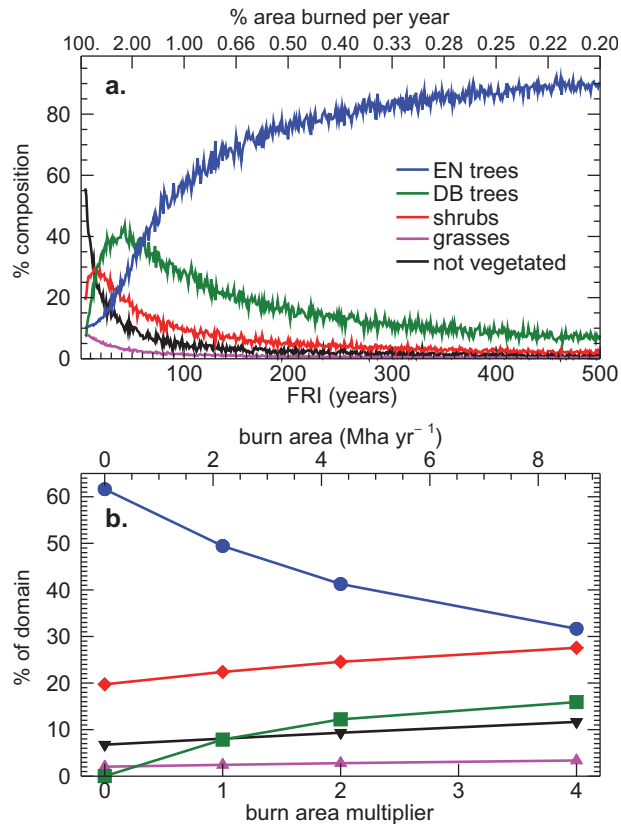


Fig. 4. Simulated plant functional types (PFTs) for the boreal forest fraction of an example grid cell with 300 sub-grid cells **(a)**, and domain-wide PFT compositions under varying fire regimes **(b)**. **(b)** includes vegetation from tundra pixels. Not shown are contributions from temperate vegetation, glaciers, wetlands, lakes, and urban areas.

Cooling from boreal forest fires

B. M. Rogers et al.

Title Page

Abstract Introduction

Conclusions References

Tables Figures

◀ ▶

◀ ▶

Back Close

Full Screen / Esc

Printer-friendly Version

Interactive Discussion



Cooling from boreal forest fires

B. M. Rogers et al.

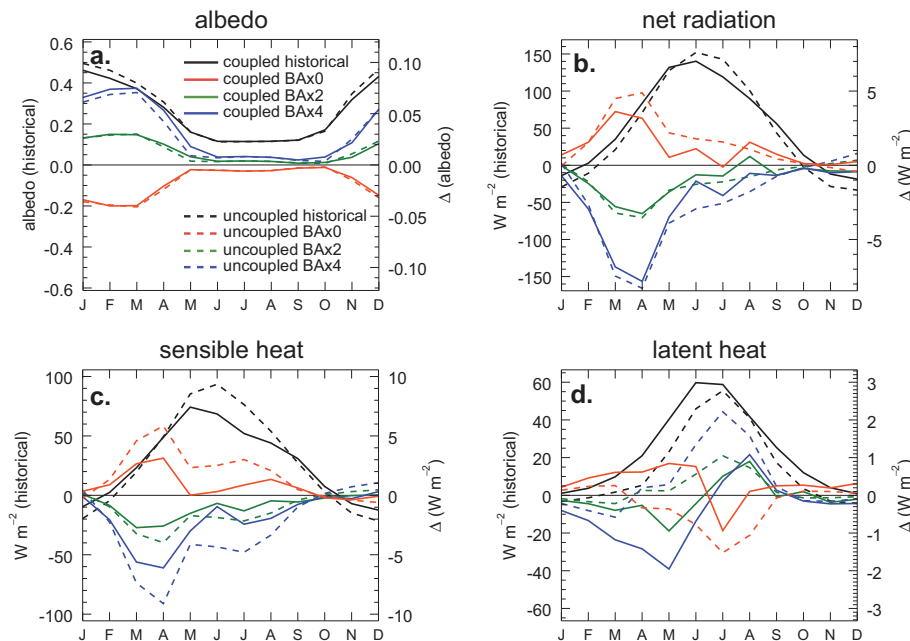


Fig. 5. Mean monthly historical (BAx1) and changes to energy budgets for coupled and uncoupled simulations. Historical values are on left-hand axes, and anomalies from BAx1 on right-hand axes.

Discussion Paper | Discussion Paper | Discussion Paper | Discussion Paper | Discussion Paper

Title Page

Abstract

Introduction

Conclusions

References

Tables

Figures

◀

▶

◀

▶

Back

Close

Full Screen / Esc

Printer-friendly Version

Interactive Discussion



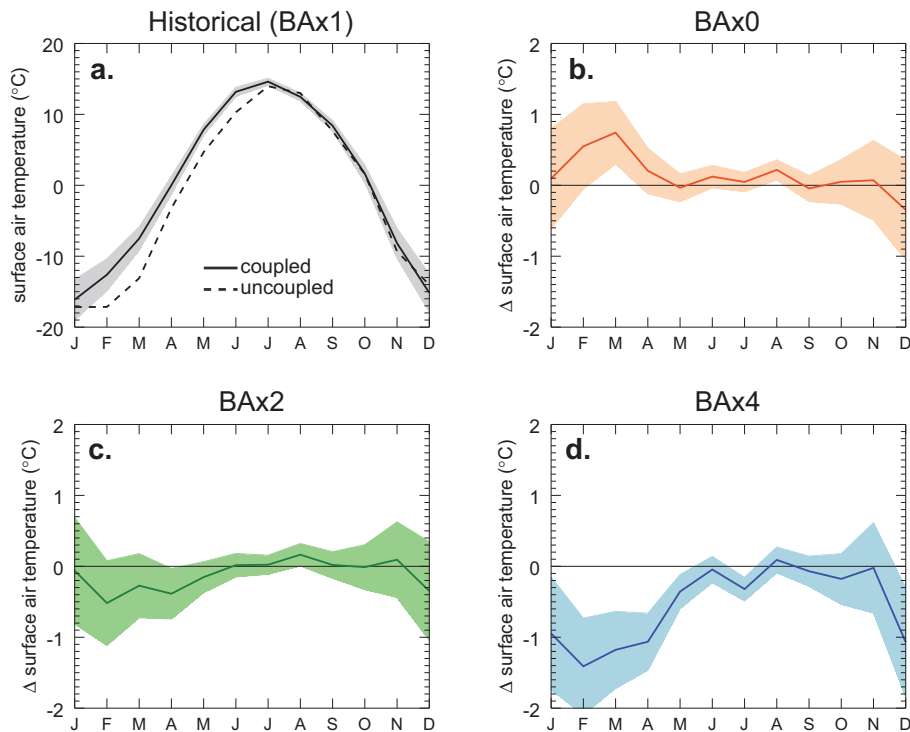


Fig. 6. Mean monthly historical (BAx1) and changes to 2-m air temperature. The shaded area in (a) delineates monthly standard error, and shaded regions in (b–d) represent monthly 95% confidence intervals. The uncoupled time series is driven by Qian et al. (2006) reanalysis data and used to assess temperature bias in the coupled model.

Cooling from boreal forest fires

B. M. Rogers et al.

Title Page

Abstract Introduction

Conclusions References

Tables Figures

◀ ▶

◀ ▶

Back Close

Full Screen / Esc

Printer-friendly Version

Interactive Discussion



Cooling from boreal forest fires

B. M. Rogers et al.

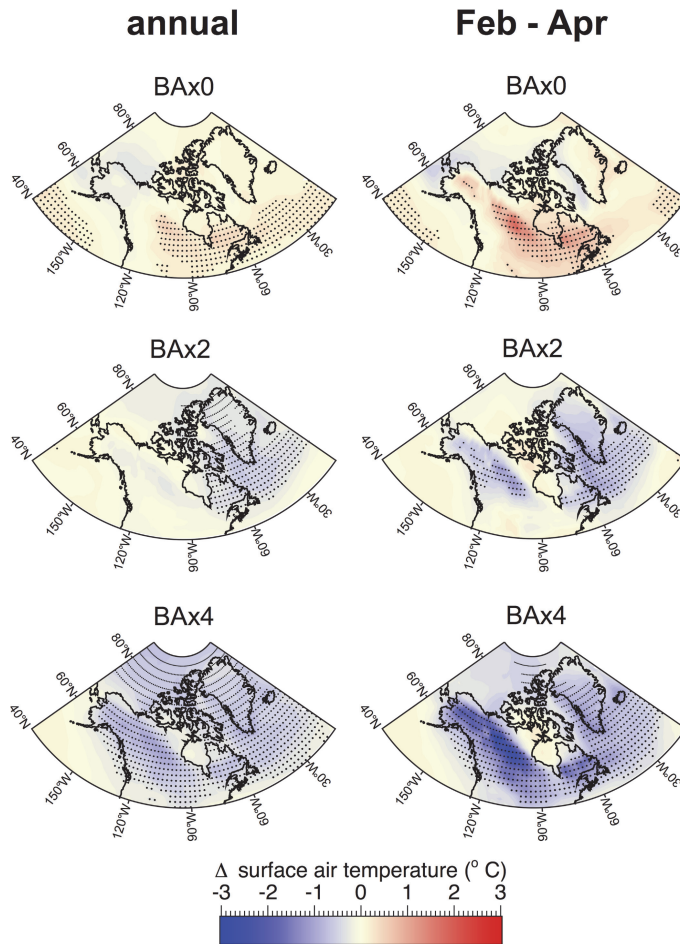


Fig. 7. Annual and February–April temperature anomalies across high-latitude North America, Greenland, and the surrounding ocean. Stipples represent 95 % statistical significance.

Title Page

Abstract Introduction

Conclusions References

Tables Figures

◀
▶

◀
▶

Back Close

Full Screen / Esc

Printer-friendly Version

Interactive Discussion



Cooling from boreal forest fires

B. M. Rogers et al.

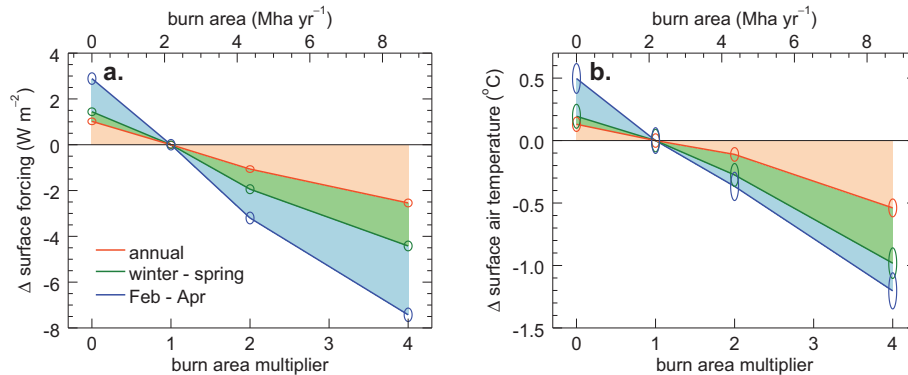


Fig. 8. Surface shortwave forcing (a) and 2-m air temperature (b) changes across the domain as a function of burn area, for three time periods: annual, winter–spring, and February–April. Ellipse heights correspond to standard errors of the means. Net radiation and top of atmosphere energy balance (not shown) displayed similar patterns to (a).

Title Page

Abstract

Introduction

Conclusions

References

Tables

Figures

◀

▶

◀

▶

Back

Close

Full Screen / Esc

Printer-friendly Version

Interactive Discussion



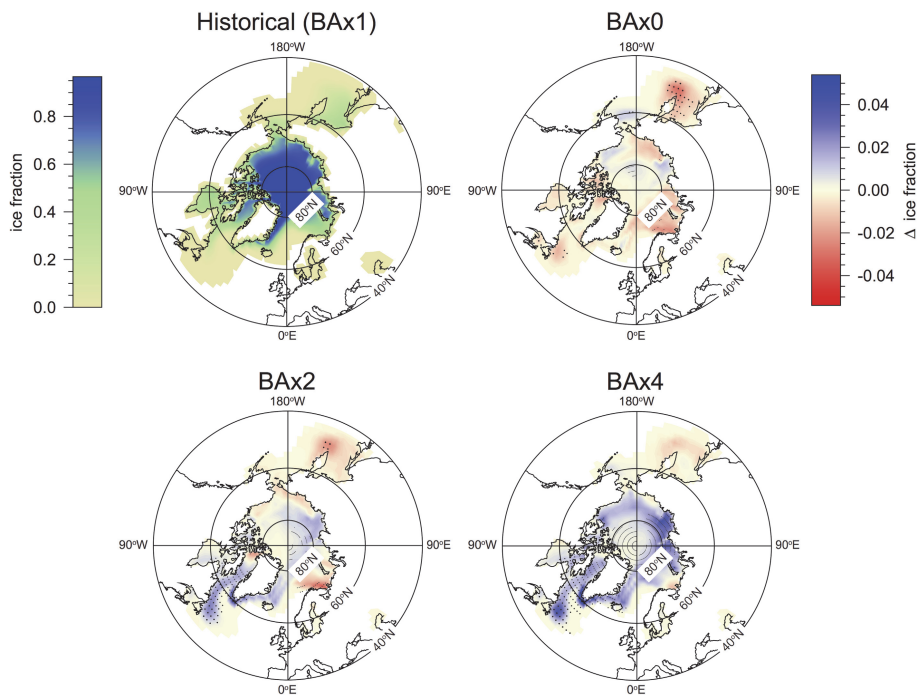


Fig. 9. Mean historical and changes to annual Northern Hemisphere sea ice coverage. Stipples represent 95 % statistical significance.

Cooling from boreal forest fires

B. M. Rogers et al.

Title Page

Abstract Introduction

Conclusions References

Tables Figures

◀ ▶

◀ ▶

Back Close

Full Screen / Esc

Printer-friendly Version

Interactive Discussion

